

Colloquium: Astromaterial science and nuclear pasta

M. E. Caplan^{*} and C. J. Horowitz[†]*Center for Exploration of Energy and Matter and Department of Physics,
Indiana University, Bloomington, Indiana 47405, USA*

(published 23 October 2017)

“Astromaterial science” is defined as the study of materials in astronomical objects that are qualitatively denser than materials on Earth. Astromaterials can have unique properties related to their large density, although they may be organized in ways similar to more conventional materials. By analogy to terrestrial materials, this study of astromaterials is divided into hard and soft and one example of each is discussed. The hard astromaterial discussed here is a crystalline lattice, such as the Coulomb crystals in the interior of cold white dwarfs and in the crust of neutron stars, while the soft astromaterial is nuclear pasta found in the inner crusts of neutron stars. In particular, how molecular dynamics simulations have been used to calculate the properties of astromaterials to interpret observations of white dwarfs and neutron stars is discussed. Coulomb crystals are studied to understand how compact stars freeze. Their incredible strength may make crust “mountains” on rotating neutron stars a source for gravitational waves that the Laser Interferometer Gravitational-Wave Observatory (LIGO) may detect. Nuclear pasta is expected near the base of the neutron star crust at densities of 10^{14} g/cm³. Competition between nuclear attraction and Coulomb repulsion rearranges neutrons and protons into complex nonspherical shapes such as sheets (lasagna) or tubes (spaghetti). Semiclassical molecular dynamics simulations of nuclear pasta have been used to study these phases and calculate their transport properties such as neutrino opacity, thermal conductivity, and electrical conductivity. Observations of neutron stars may be sensitive to these properties and can be used to interpret observations of supernova neutrinos, magnetic field decay, and crust cooling of accreting neutron stars. This Colloquium concludes by comparing nuclear pasta shapes with some similar shapes seen in biological systems.

DOI: 10.1103/RevModPhys.89.041002

CONTENTS

I. Introduction	1
II. Compact Stars and Astrosolids	2
III. Coulomb Crystals as Hard Astromaterials	3
A. How stars freeze: Coulomb crystals in white dwarfs	3
B. Crystallization on accreting neutron stars	4
C. Gravitational waves and the strength of astromaterials	4
IV. Nuclear Pasta and Soft Astromaterials	6
A. Historical development	6
B. Molecular dynamics	7
1. Topology	7
2. Static structure factor	8
C. Observables	9
1. Supernova neutrino-pasta scattering	9
2. Spin period	9
3. Crust cooling	9
D. Relation to soft condensed matter	10
V. Summary and Perspective	11
Acknowledgments	11
References	11

I. INTRODUCTION

The heavens contain a variety of materials that range from conventional to extraordinary and extreme. Solar System bodies such as the moon, asteroids, and terrestrial planets

contain rocks that are similar to rocks on Earth, however, observations that 40 Eridani B (Adams, 1914) and Sirius B (Adams, 1915) are dim and hot stars led to a dramatic change. These white dwarfs (WDs) are much denser than anything on Earth and have central densities more than a million times that of water and thus may be made of materials unlike any we can produce in the laboratory.

The boundaries of the field of material science are difficult to define; perhaps a “material” may simply be described as matter that is not fluid. For this Colloquium, we define “astromaterial science” as the study of materials in astronomical objects that are qualitatively denser than terrestrial materials. Astromaterials can have unique properties related to their density, such as extraordinary mechanical strength, although they may be organized in ways similar to more conventional materials.

Advances in computational material science may be particularly useful for astromaterial science because astromaterials typically are present under extreme conditions, such as very high pressure, making them inaccessible to laboratory experiments on Earth. Although we are not aware of any previous reference to astromaterial science, there are a number of works discussing related concepts, such as stellar metallurgy (Ball, 2014; Kobayakov and Pethick, 2014). Chamel (2005) also studied metallurgical aspects of the neutron star crust by showing parallels between the band structure of neutrons in the crust and electrons in metals.

Often materials are classified as hard or soft. For example, a crystalline solid is a hard material. Coulomb crystals in the interior of cold white dwarfs and in neutron star crusts are

^{*}mecaplan@indiana.edu[†]horowit@indiana.edu

examples of hard astromaterials. In contrast, a soft material is neither a liquid nor a crystalline solid. Many soft materials are common in everyday life, such as gels and glasses, liquid crystals, and biological membranes which may involve the self-assembly of microscopic components into much larger complex shapes.

By analogy to self-assembly in terrestrial soft matter, we consider nuclear pasta a soft astromaterial. Pasta is expected near the base of the neutron star crust at densities of 10^{14} g/cm³, 100×10^{12} times that of water. This density is so high that individual atomic nuclei start to touch. When this happens, competition between nuclear attraction and Coulomb repulsion rearranges the neutrons and protons from nuclei into complex nonspherical shapes such as flat sheets (lasagna) or thin tubes (spaghetti). These shapes may influence transport and elastic properties of nuclear pasta, making pasta relevant for interpreting a number of neutron star observations.

This Colloquium discusses one hard astromaterial, Coulomb crystals, and one soft astromaterial, nuclear pasta. First, we review the structure of white dwarfs and neutron stars (NSs) in Sec. II. Next, Sec. III discusses Coulomb crystals in the interior of cold white dwarfs and in neutron star crusts. We begin by considering how stars freeze, including discussing the limited observations of solidifying white dwarfs and the cooling of neutron star crusts that occurs after accretion heating from a companion star. We end this section with an application of hard astromaterials to the radiation of continuous gravitational waves from “mountains” on rotating neutron stars.

We describe large-scale molecular dynamics (MD) simulations of the breaking stress of Coulomb crystals. On Earth the breaking stress of rock is the limiting factor in how large a mountain can be. Mountains can also form on neutron stars, although because of the immense gravity their heights are measured in centimeters instead of kilometers. Similar to terrestrial rock, the breaking stress of a neutron star crust is the limiting factor to their size. Molecular dynamics simulations suggest the breaking stress of a neutron star crust is enormous, some 10×10^9 times larger than steel. This strong crust can support mountains large enough to emit detectable gravitational waves as the star spins.

Section IV is on nuclear pasta. After a historical review we describe semiclassical molecular dynamics simulations of nuclear pasta and use them to illustrate some of the complex shapes that are possible. We discuss transport properties of nuclear pasta including shear viscosity, thermal conductivity, electrical conductivity, and neutrino opacity. We also discuss topological defects in the pasta and observations of magnetic field decay and crust cooling of neutron stars that may be sensitive to pasta properties. Finally, we compare nuclear pasta shapes to some similar shapes seen in biological systems made of phospholipids.

We summarize and offer a short perspective in Sec. V.

II. COMPACT STARS AND ASTROSOLIDS

Stars are made of hot plasmas. Nevertheless, compact stars such as WDs and NSs are so dense that the plasma can crystallize. We begin by reviewing the structure of cold WDs and NSs.

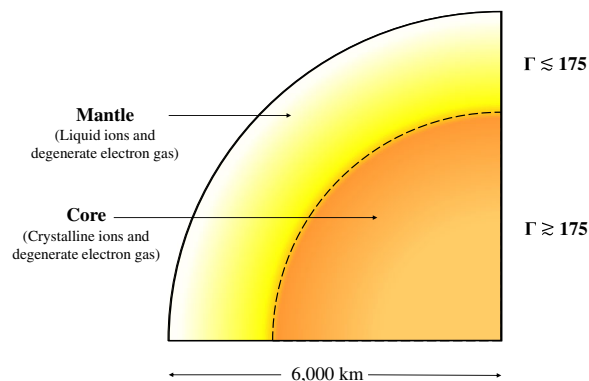


FIG. 1. Cross section of a cooling white dwarf star. The Coulomb crystals described in Sec. III are found in the solid core, while the mantle is liquid. The Coulomb parameter Γ describes the ratio of a typical Coulomb energy between ions to the thermal energy kT ; see Eq. (3).

Figure 1 shows the expected structure of a cold WD. There is a liquid mantle composed of ions and a degenerate electron gas. The Coulomb parameter Γ describes the ratio of a Coulomb energy $Z^2 e^2/a$ between ions (of charge Z) to the thermal energy kT ; see Sec. III. Here a is a typical distance between ions. The density increases by several orders of magnitude as one approaches the center of the star, so a decreases with depth.¹ This increases the Coulomb energy and Γ (in the approximately isothermal interior) and causes the material to crystallize. Thus, the star has a solid core surrounded by a liquid mantle. As the star continues to cool the size of the solid core will grow with time. WD crystallization is discussed in more detail in Sec. III.A.

Figure 2 shows the expected structure of a NS. Warm material accreting onto a NS can form a liquid ocean that is similar to the mantle of a WD. This material is then buried as more accreted matter arrives, so the density and Γ increase until this material reaches the bottom of the ocean where it freezes to form the outer crust. The outer crust contains crystalline ions and degenerate electrons. It is similar to the solid core of a cold WD. As the density continues to increase, the rising electron Fermi energy drives electron capture reactions $e + p \rightarrow n + \nu_e$. This makes the ions in the outer crust more and more neutron rich. When the density reaches about 10^{11} g/cm³ the ions become so neutron rich that neutrons “drip” out of these nuclei. This forms the inner crust of a NS which is composed of a gas of nearly free neutrons, crystalline ions, and a very degenerate gas of relativistic electrons.

As one approaches nuclear saturation density $n_0 \approx 3 \times 10^{14}$ g/cm³ (the density inside a nucleus) individual nuclei approach one another and begin to touch. At this point competition between short range nuclear attraction from the strong force and long range Coulomb repulsion can rearrange nearly spherical nuclei into tubes (spaghetti), flat sheets (lasagna), or other exotic shapes that are known as nuclear pasta (Ravenhall, Pethick, and Wilson, 1983; Hashimoto, Seki, and Yamada, 1984). These nuclear pasta phases are

¹The central density of a WD could be as high as 10^9 g/cm³.

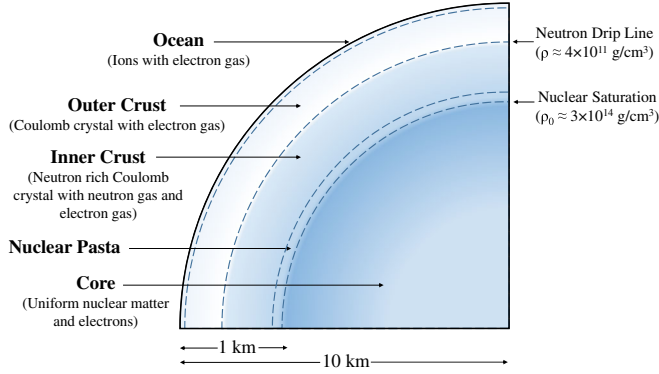


FIG. 2. Cross section of a neutron star. The Coulomb crystals described in Sec. III are found in the inner and outer crusts, while the nuclear pasta, described in Sec. IV, may be found at the base of the inner crust.

expected at the base of the inner crust and we discuss them in Sec. IV. Finally at densities above n_0 , in the core of a NS, one expects a uniform liquid of neutron rich matter. Here quantum zero point motion keeps the liquid from crystallizing. We now discuss how these solid phases form in WDs and accreting NSs.

III. COULOMB CRYSTALS AS HARD ASTROMATERIALS

How do WDs and NSs freeze? At WD densities and beyond, material is pressure ionized. The electrons form a degenerate Fermi gas while the ions interact via Coulomb potentials $V(r)$ that are only slightly screened by the electrons,

$$V(r_{ij}) = \frac{Z_i Z_j e^2}{r_{ij}} \exp(-r_{ij}/\lambda). \quad (1)$$

Here r_{ij} is the distance between ions of charge Z_i and Z_j . The electron Fermi energy is typically the largest energy in the problem and limits the electron polarizability. Therefore electrons are not treated explicitly. Instead electrons are included by adding a screening factor to the Coulomb interaction. This screening factor is taken to be the Thomas-Fermi screening length λ , which is given by

$$\lambda = \frac{\pi^{1/2}}{(4\alpha k_F)^{1/2} (k_F^2 + m_e^2)^{1/4}} \sim \frac{1}{2k_F} \sqrt{\frac{\pi}{\alpha}} \quad (2)$$

for noninteracting relativistic electrons. The screening length is a function of the electron mass m_e and its Fermi momentum $k_F = (3\pi^2 n_e)^{1/3}$. The electron density n_e is equal to the ion charge density $n_e = \langle Z \rangle n$, where n is the ion density and $\langle Z \rangle$ is the average charge.

The system can be characterized by a Coulomb parameter Γ describing the ratio of a typical Coulomb energy to the thermal energy. For a one-component plasma (OCP), where all of the ions have charge Z at a temperature T , we have

$$\Gamma = \frac{Z^2 e^2}{akT}, \quad (3)$$

with $a = (3/4\pi n)^{1/3}$.

In many cases the OCP is a useful model, although in general one may be interested in a mixture of ions of different charges. In the case of a multicomponent plasma (MCP) species are first treated individually by calculating the ion sphere radius $a_i = (3Z_i/4\pi n_e)^{1/3}$ for each species i . This gives $\Gamma_i = Z_i^2 e^2 / a_i kT$ for each species so that averaging over all ions gives Γ for the mixture,

$$\Gamma = \frac{\langle Z^5/3 \rangle e^2}{kT} \left[\frac{4\pi n_e}{3} \right]^{1/3}. \quad (4)$$

The determination that the OCP freezes at $\Gamma \approx 175$ has a long history starting with the Monte Carlo simulations of Brush, Sahlin, and Teller (1966). Since then during the 1960s to 1990s there have been many works including Pollock and Hansen (1973) and Slattery, Doolen, and DeWitt (1980) who determined the melting Γ with improved accuracy, while Loumos and Hubbard (1973) and Ichimaru, Iyetomi, and Ogata (1988) studied the freezing of carbon-oxygen mixtures, and Jones and Ceperley (1996) included quantum effects using path integral Monte Carlo methods.

In contrast to the OCP, the MCP does not have a fixed freezing temperature; rather, it depends on the exact composition. Much work has been done to calculate Γ for the MCP due to its importance in phase separation in the neutron star ocean. Recently, Medin and Cumming (2010) developed a semi-analytical method for calculating phase diagrams of arbitrary mixtures by generalizing early work on one-, two-, and three-component plasmas. This method has since been applied to many different mixtures of rapid proton capture nucleosynthesis process (rp-process) ash to find Γ (Mckinven *et al.*, 2016).

We now introduce MD simulations that are similar to the Monte Carlo simulations that were originally used. We will discuss a number of MD simulation results later in this review. A simulation involves N particles that are at positions $\mathbf{r}_i(t)$ with velocities $\mathbf{v}_i(t)$ in a simulation volume that typically has periodic boundary conditions. The force on each particle, from the surrounding particles, is calculated using the chosen force law [for example, the negative gradient of Eq. (1)]. This is often the most time consuming step. Then, Newton's laws are used to calculate the new $\mathbf{r}_i(t + \Delta t)$ and $\mathbf{v}_i(t + \Delta t)$ at simulation time $t + \Delta t$. Here Δt is a small MD time step.² Starting from some initial configuration one repeats this procedure for many MD time steps until the system comes into equilibrium. Then one can "measure" quantities of interest such as the potential energy by simply evaluating the quantity for the positions $\mathbf{r}_i(t)$ at time t . Ensemble averages of observables can be calculated by making many measurements at different simulation times and forming a time average. Note that MD simulations ignore quantum effects on the ions. These were considered for binary Coulomb crystals by Kozhberov and Baiko (2015).

A. How stars freeze: Coulomb crystals in white dwarfs

Observations of cooling WD stars provide important information on the ages and evolution of stellar systems

²Many algorithms exist for integrating Newton's laws efficiently and accurately; popular algorithms include velocity Verlet (Verlet, 1967) and predictor corrector.

(Fontaine, Brassard, and Bergeron, 2001; Renedo *et al.*, 2010; Salaris *et al.*, 2010; Garcia-Berro *et al.*, 2011). The interior of a WD is a Coulomb plasma of ions and a degenerate electron gas. As the star cools this plasma crystallizes. Note that WDs freeze from the center outward, because of the higher central densities, while NS are expected to form a solid crust over a liquid core.³

This crystallization can delay WD cooling as the latent heat is radiated away; see, for example, Salaris *et al.* (1997). Winget *et al.* (2009) observed effects from the latent heat of crystallization on the luminosity function of WDs in the globular cluster NGC 6397. Winget *et al.* suggested the melting temperature of the carbon and oxygen mixtures expected in these WD cores is close to the melting temperature of pure carbon. This is in agreement with our molecular dynamics simulations (Horowitz, Schneider, and Berry, 2010). In addition, asteroseismology provides an alternative way to study crystallization in WD; see, for example, Metcalfe (2005).

Carbon-oxygen white dwarfs can also contain some neon. The liquid-solid phase diagram of the three-component C, O, Ne system has now been determined by direct MD simulation (Hughto *et al.*, 2012). The optimal structures of three-component He-C-O and C-O-Ne white dwarfs were determined using a genetic optimization technique (Engstrom, Yoder, and Crespi, 2016). This technique was originally developed to optimize the structure of conventional materials. Finally, updated evolutionary sequences for hydrogen-deficient white dwarfs have been created using the liquid-solid phase diagram from MD simulations (Camisassa *et al.*, 2017).

B. Crystallization on accreting neutron stars

We next consider freezing on neutron stars. The crust of an isolated NS is often well described by the OCP. Being that the NS is made from the core collapse of a supernova (SN), the composition of the crust, for low densities, is commonly assumed to be ⁵⁶Fe. With increasing depth, and thus increasing Fermi energy, electron captures occur that drive the matter to be more neutron rich. Successive electron capture layers produce specific neutron rich isotopes at specific depths. As the density gets higher in the inner crust, pycnonuclear reactions can cause nuclei to fuse. Although the general idea is quite simple, the exact isotopes present are not fully understood, as they depend on the exact binding energies and masses of neutron rich nuclei that are not well studied.

In contrast to the isolated star, a NS in a binary system with a conventional star can accrete matter from its companion, replacing the crust with a complex mixture. Hydrogen rich material falling on the NS often undergoes explosive nuclear burning where protons are rapidly captured by seed nuclei

³Note that the NS should not be thought of as an “inverted WD” with a liquid interior and solid exterior. The liquid core of a NS is fundamentally different from the liquid ocean of a WD. The outer regions of both NS and WD are liquid plasmas of ions, which we call the “mantle” of the WD and the “ocean” of the NS. At high pressure, this plasma freezes, forming the “core” of the WD or the “crust” of the NS. The core of the NS is a superfluid of nucleons at nuclear density, and may more aptly be thought of as the next phase up a ladder of increasing density.

(rp-process nucleosynthesis) to build up heavier nuclei with mass numbers A up to $A \approx 107$ (Schatz *et al.*, 2001; Woosley *et al.*, 2004). This upper limit is due to a closed cycle of burning known as the SnSbTe cycle, which limits rp-process nucleosynthesis to $Z \leq 52$ (Schatz *et al.*, 2001).

As this rp-process material is buried by further accretion, the rising electron Fermi energy induces electron capture to produce a range of neutron rich nuclei from O to approximately Se (Gupta *et al.*, 2007). This material freezes when the density exceeds about 10^{10} g/cm³, so that $\Gamma > 175$. Our large-scale MD simulations of how this complex rp-process ash freezes (Horowitz, Berry, and Brown, 2007) found that chemical separation takes place so that the liquid phase is greatly enriched in low atomic number Z elements, while the newly formed solid crust is enriched in high Z elements. This chemical separation has now been studied for a variety of compositions (Mckinven *et al.*, 2016) and can lead to convection in the ocean (Medin and Cumming, 2015), and this convection could be observable in the x-ray light curve (Medin and Cumming, 2014).

Nuclear reactions typically produce a complex composition with a variety of different Z ions. In terrestrial materials, the presences of “impurities” with different Z can disrupt the lattice structure of a material. However, MD simulations suggest that a regular crystal lattice forms even though large numbers of impurity ions, with different Z , may be present. This regular crystal should have a high thermal conductivity. Early work suggested that the lattice may be amorphous, although we do not find an amorphous solid that would have a low thermal conductivity (Hughto *et al.*, 2011). Recent x-ray observations of neutron stars found that the crust cools quickly when heating from extended periods of accretion abruptly stops (Rutledge *et al.*, 2002; Wijnands *et al.*, 2004; Cackett *et al.*, 2006). This is consistent with MD simulations and strongly favors a crystalline crust over an amorphous solid that would cool more slowly (Shternin *et al.*, 2007; Brown and Cumming, 2009). Furthermore, this rapid crust cooling suggests that the number of impurities is not too high. Indeed, recent observations of KS 1731-260 support a low impurity parameter (Merritt *et al.*, 2016). Otherwise, electron-impurity scattering could limit the thermal conductivity. One possibility is that nuclear reactions burn away impurities as they get buried into the inner crust at densities of order 10^{11} g/cm³.

C. Gravitational waves and the strength of astromaterials

A century ago, Albert Einstein predicted that accelerating masses will produce oscillations of space-time known as gravitational waves (GWs). After decades of work, GWs were finally observed by the Laser Interferometer Gravitational-Wave Observatory (LIGO) (Abbott *et al.*, 2016). LIGO involves two 4 km detectors that are sensitive to GWs at frequencies from about 10 Hz to a few thousand Hz.

In principle, one needs large masses with large accelerations in order to produce a detectable GW signal. For example, the first GWs detected were from the merger of two $\approx 30M_{\odot}$ black holes orbiting at relativistic speeds.

However, black holes are not necessary for producing GWs. In fact, any isolated compact body can produce GWs. All one needs is to put a mass on a stick and shake vigorously,

although for the GWs to be detectable the mass must be very large and the stick very strong. Furthermore, the system must be compact, and hence very dense, in order to radiate at the relatively high LIGO frequencies. Therefore, if we seek a compact GW source then we should look for “strong sticks” which may be made of extraordinarily strong astromaterials.

Such a compact body would be a continuous source of GWs that may be detectable by LIGO. A surprisingly efficient continuous GW source is a large mountain on a rapidly rotating NS. This can be a strong source because a large mass undergoes large accelerations. The limiting variable may be the strength of the NS crust (strong stick) that holds up the mountain. Here one may be interested not just in the strength of this material or that material, but what is the strength of the strongest possible material?

We performed large-scale MD simulations of the breaking stress (strength) of a neutron star crust (Horowitz and Kadau, 2009; Chugunov and Horowitz, 2010; Horowitz, 2010). This determines how large a neutron star mountain can be before it collapses under the star’s extreme gravity. During the simulation a sample is strained by moving top and bottom layers in opposite directions or by deforming the shape of the simulation volume (Horowitz and Kadau, 2009). These simulations explored the effects of defects, impurities, and grain boundaries on the breaking stress. The system may start to break along grain boundaries. However, the large pressure holds the microcrystals together and the system does not fail until large regions are deformed. We found that the neutron star crust is very strong because the high pressure prevents the formation of voids or fractures and because the long range Coulomb interactions ensure many redundant “bonds” between planes of ions. Neutron star crust is the strongest material known, according to our simulations. The breaking stress is 10×10^9 times larger than that for steel. This is very promising for GW searches because it shows that large mountains are possible, and these could produce detectable signals.

Our simulations have a breaking strain, fractional deformation when the crust fails of the order of 0.1. This can support significant mountains with a large mass asymmetry and an ellipticity ϵ as large as 10^{-6} to 10^{-5} . The ellipticity is the fractional difference in moments of inertia $\epsilon = (I_1 - I_2)/I_3$, where I_1 , I_2 , and I_3 are the three principle moments of inertia of a neutron star.

A rotating asymmetric neutron star efficiently radiates gravitational waves. The gravitational wave strain h_0 is the fractional change in length of LIGO’s arms from the passage of a GW. The gravitational wave strain due to a rotating NS a distance d away is

$$h_0 = \frac{4\pi^2 G I_3 f^2}{dc^4} \epsilon. \quad (5)$$

Here G is Newton’s constant, c is the speed of light, and f is the frequency of GW radiation. This frequency is twice the star’s rotational frequency $f = 2\omega$. Equation (5) is very simple and involves largely known quantities such as I_3 . Observations of or upper limits on h_0 can be used to set observational limits on ϵ . Extensive searches for GW from known pulsars have now been performed (Aasi *et al.*, 2014;

Abbott *et al.*, 2017a). No sources were detected but several upper limits on ϵ were obtained, which in the most sensitive cases were $\epsilon < 10^{-8}$. Neutron star crust can support large mountains yielding ellipticities larger than this. However, the observations show that, for these stars at least, such large mountains did not form. Processes that build mountains on NS are largely unknown; mountain building could be associated with accretion where matter may accumulate asymmetrically because of magnetic fields or temperature gradients.

Neutron stars that accrete matter from a companion may be interesting sources of GW. No neutron star has been observed to spin faster than about 700 Hz. This could be because the spin up torque from accretion is balanced by a spin down torque from GW radiation (Bildsten, 1998; Andersson, Kokkotas, and Schutz, 1999). If this GW torque is from crust mountains, this requires only a relatively modest $\epsilon \approx 10^{-8}$ (Patruno, Haskell, and Andersson, 2017). Searches for GW from the accreting systems Scorpius X-1 (Abbott *et al.*, 2017) and XTE J1751-305 have now been reported (Meadors *et al.*, 2017).

There are several other searches for continuous GW. For example, a computationally expensive all sky search for GW from unknown neutron stars was sensitive to rapidly spinning stars with $\epsilon = 10^{-6}$ out to distances of 1 kpc (Aasi *et al.*, 2016). Note that neutron stars are small and can be difficult to observe. There are undoubtedly vastly more neutron stars in the Galaxy than we have so far detected. The Galactic center has also been searched for GWs from unknown neutron stars (Aasi *et al.*, 2013). Young neutron star systems may be energetic because of the recent supernova and could be strong sources of GW. The remnant from SN1987A has been searched for GW (Sun *et al.*, 2016). Finally, the young and active Crab pulsar is observed to be rapidly spinning down. This is most likely due to electromagnetic radiation. However, some of this spin down could be due to GW radiation, and LIGO has now limited the spin down power in GW radiation to be less than about 1% of the total spin down power (Aasi *et al.*, 2014). All of these limits will likely be improved significantly within a few years, because LIGO has recently been upgraded to a more sensitive advanced LIGO configuration. Indeed, the first advanced LIGO search for GWs from known pulsars has now been published (Abbott *et al.*, 2017a).

We now discuss how the strength of neutron star crust depends on density. Previous work focused on the strength of the Coulomb interactions between ions, which increase as the ions move closer together. Therefore, the strength of the crust is expected to increase with density. Above a density of about 10^{11} g/cm³ the ions become so neutron rich that excess neutrons drip out to form a neutron gas between the ions. This gas has been ignored in simulations of crust strength (Horowitz and Kadau, 2009). Neutron-ion interactions could possibly change the structure of the body centered cubic (bcc) lattice (Kobyakov and Pethick, 2014). However, MD simulations find little difference in strength between bcc and fcc lattices (Horowitz and Kadau, 2009).

Perhaps more interesting is what happens as one approaches nuclear density near 10^{14} g/cm³ where the ions start to touch and strongly interact with their neighbors. Competition between short range nuclear attraction and long

range Coulomb repulsion can rearrange nucleons into complex shapes known as nuclear pasta. This likely greatly changes the material properties. Nuclear pasta is discussed in the next section.

IV. NUCLEAR PASTA AND SOFT ASTROMATERIALS

An example of a soft astromaterial is “nuclear pasta,” found in the inner crust of neutron stars.

To review, the outer crust of a neutron star is likely a Coulomb crystal, similar in composition to a white dwarf. These Coulomb crystals are made of isolated nuclei and are at densities several orders of magnitude below nuclear saturation. However, the core of a neutron star is believed to be uniform nuclear matter at densities above 3×10^{14} g/cm³, the nuclear saturation density n_0 . There must therefore be a region in the neutron star crust where nuclear matter transitions from being found in isolated nuclei to existing in bulk.

Under compression, the ions in the crust will rearrange into exotic shapes in order to minimize their energy. The competition between the nuclear attraction of protons and neutrons and the Coulomb repulsion between protons creates a variety of nonspherical nuclei (Ravenhall, Pethick, and Wilson, 1983; Hashimoto, Seki, and Yamada, 1984). This transition is now believed to involve several pasta phases.

As a simple illustrative argument, imagine what phases would be seen by an observer descending through the crust, as shown in Fig. 2. At the top of the crust, a thin atmosphere and ocean of ionized nuclei are found embedded in a degenerate Fermi gas of electrons. With increasing density these nuclei freeze to form the outer crust. The outer crust is a solid bcc lattice of nuclei. As the electron Fermi energy increases with depth, electron capture begins to occur creating increasingly neutron rich nuclei. These nuclei eventually reach the neutron drip line and begin to shed neutrons into a free neutron gas surrounding the lattice, marking the transition to the inner crust.

At the base of the inner crust we find neutron rich nuclei with a free neutron gas. The proton fraction here is near 5%. At densities above $0.2n_0$, the nuclei begin to touch and fuse forming complex shapes. As the density approaches n_0 the complex shapes transition to uniform nuclear matter.⁴ These shapes have since come to be called nuclear pasta, due to their resemblance to spaghetti and lasagna and other namesake pasta. In total, for a 10 km radius NS, the ions of the crust may extend to a depth of about 1 km, and the pasta region may extend an additional 100 m.

A. Historical development

Early work studying nuclear matter at subsaturation density considered only spherical nuclei, nuclear matter with spherical bubbles, and uniform nuclear matter (Baym, Bethe, and

Pethick, 1971). This work argued that nuclei turned “inside out” at high densities ($0.5n_0$) to form nuclear matter with spherical bubbles, which is relevant to the equation of state (Lamb *et al.*, 1978). Later work expanded on this approach using a Skyrme Hamiltonian (Lattimer *et al.*, 1985).

The idea of nonspherical nuclei near the saturation density was proposed independently by Ravenhall, Pethick, and Wilson (1983) and Hashimoto, Seki, and Yamada (1984). This early work used a simple liquid drop model to predict a hierarchy in density of five structures which could be stable in the neutron star crust. These five structures are, in order of increasing density, spheres, cylinders, slabs, cylindrical voids, and spherical voids and are shown in Figs. 3(a), 3(b), 3(d), 3(f), and 3(g). These phases have since come to be called gnocchi, spaghetti, lasagna, antispaghetti, and antignocchi.

Williams and Koonin (1985) used the Thomas-Fermi approximation to a Skyrme functional for symmetric nuclear matter to show that the transitions between these five phases are first order. Oyamatsu (1993) expanded on this by using the Thomas-Fermi-Skyrme approximation to study neutron star matter in beta equilibrium, confirming the stability of the standard hierarchy in neutron star matter. Lastly, Lorenz, Ravenhall, and Pethick (1993) confirmed these results using the Hartree-Fock method.

The time-dependent Hartree-Fock method has recently been used to simulate small numbers of nucleons (up to 2000) which form pasta and have been used to produce phase diagrams of nuclear pasta for a variety of temperatures, densities, and proton fractions (Magierski and Heenen, 2002; Gögelein and Muther, 2007; Sonoda *et al.*, 2008; Newton and Stone, 2009; Schuetrumpf *et al.*, 2013). These simulations have been useful for showing the existence of pasta phases beyond the standard hierarchy, such as the networked gyroid structure (Schuetrumpf *et al.*, 2015; Schuetrumpf and Nazarewicz, 2015).

Additionally, semiclassical MD models have been developed, originally for heavy ion collisions (Vicentini, Jacucci, and Pandharipande, 1985; Aichelin and Stcker, 1986; Dorso, Duarte, and Randrup, 1987), and then applied to nuclear pasta (Maruyama *et al.*, 1998). Watanabe, Sonoda, and their collaborators have done extensive work using MD to determine the structure and possible formation of nuclear pasta (Watanabe *et al.*, 2002, 2003, 2004, 2005, 2009). We developed an MD model, originally to study the neutrino opacity of nuclear pasta, although the model has since been used to calculate many other pasta properties (Horowitz, Pérez-García, and Piekarewicz, 2004).

Despite being (semi)classical these MD simulations have been able to robustly reproduce the predicted phases of nuclear pasta; see, for example, Caplan *et al.* (2015) and Horowitz *et al.* (2015). Additionally, classical simulations require considerably less computation time than quantum simulations, so they can be run for much larger simulation volumes. This has enabled the identification of a variety of new pasta phases such as waffles (Schneider *et al.*, 2014) and defects (Horowitz *et al.*, 2015), which are shown in Figs. 3(c) and 3(e). In addition, the classical simulations have also been used to generate initial conditions for the quantum simulations, which reduce the computation time considerably (Sagert *et al.*, 2016).

⁴Aside from illustrating the phase transitions and anatomy of a neutron star interior, this story of descent also describes the experience of accreted matter. Such material falls onto the neutron star and is buried by later material, thus progressing through the crust until eventually reaching the core. This sort of crust replacement is expected to occur in low mass x-ray binary systems.

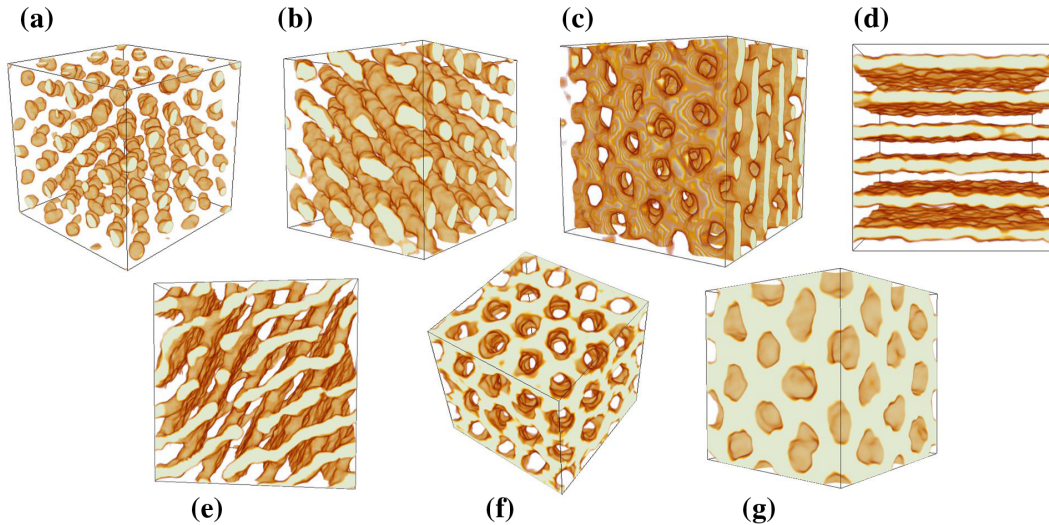


FIG. 3. Nuclear pasta configurations produced in our MD simulations with 51 200 nucleons: (a) gnocchi, (b) spaghetti, (c) waffles, (d) lasagna, (e) defects, (f) antispaghetti, and (g) antignocchi. From Schneider *et al.*, 2013, 2014, and Horowitz *et al.*, 2015.

B. Molecular dynamics

A large body of recent work has used semiclassical molecular dynamics simulations to study nuclear pasta structures. We illustrate this work by describing a semiclassical model as one example (Horowitz, Pérez-García, and Piekarewicz, 2004). This model treats protons and neutrons as point particles and uses a set of three classical two-body potentials for describing their interaction:

$$V_{np}(r) = ae^{-r^2/\Lambda} + [b - c]e^{-r^2/2\Lambda}, \quad (6a)$$

$$V_{nn}(r) = ae^{-r^2/\Lambda} + [b + c]e^{-r^2/2\Lambda}, \quad (6b)$$

$$V_{pp}(r) = ae^{-r^2/\Lambda} + [b + c]e^{-r^2/2\Lambda} + \frac{\alpha}{r}e^{-r/\lambda}, \quad (6c)$$

where the subscripts n and p denote the interactions between neutrons and protons and r is the interparticle separation. The nucleons interact by a short range potential meant to model the nuclear interaction whose strength and range are determined by the parameters a , b , c , and Λ , which are given in Table I. These parameters were chosen to approximately reproduce the saturation density and binding energy per nucleon of nuclear matter, the energy of neutron matter at saturation density, and the binding energies of a few select nuclei (Horowitz, Pérez-García, and Piekarewicz, 2004). They have been found to reproduce nuclear statistical equilibrium for simulations at low densities (Caplan *et al.*, 2015). The nuclear potentials have an

TABLE I. Parameters of the nuclear interaction. The strength of the short range repulsion between nucleons is given by a , while b and c set the strength of the intermediate range attraction. The characteristic length scale of the nuclear potential is given by Λ .

a (MeV)	b (MeV)	c (MeV)	Λ (fm ²)
110	-26	24	1.25

intermediate range attraction, a short range repulsion, and the protons interact with an additional long ranged Coulomb repulsion.

The use of a semiclassical approximation deserves comment. Individual nucleons are light and have important quantum zero point motions. However, we are most interested in the large-scale behavior that typically involves large clusters involving thousands of nucleons. These clusters are heavy and therefore behave classically. The most important quantum effects, at small scales, can be mocked up by choosing values for the parameters a , b , c , and Λ as described. Electrons are not treated explicitly and are instead included by adding a screening factor to the proton-proton Coulomb interaction. This screening factor is taken to be the Thomas-Fermi screening length λ ; see Eq. (2).

These potentials were first developed by Horowitz, Pérez-García, and Piekarewicz (2004) in order to study how pasta affects neutrino transport in supernovae. In that work, Horowitz *et al.* calculated the static structure factor $S_n(q)$, allowing them to determine the mean free path of neutrinos; see Sec. IV.B.2. MD simulations can be performed with many nucleons, and simulations with up to 409 600 nucleons have been reported in the literature to study finite size effects.

1. Topology

The pasta phases and their transitions can be rigorously quantified by their geometry and topology. The Minkowski functionals offer a powerful tool to describe the morphology of pasta structures (Watanabe *et al.*, 2002; Sonoda *et al.*, 2008; Schuettrumpf *et al.*, 2013). There are four Minkowski functionals defined in three dimensions; these are the volume V , surface area A , mean breadth B , and Euler characteristic χ .

The volume is obtained straightforwardly as the occupied fraction of the simulation. The remaining three require isosurfaces to be generated for constant density so that we can study the distribution of protons. For our simulations we use a threshold proton density of $n = 0.030$ fm⁻³ protons

TABLE II. Minkowski functionals in three dimensions. K is the domain over which the principle curvatures k_1 and k_2 are evaluated.

V	Volume
$A = \int_{\partial K} dA$	Surface area
$B = \int_{\partial K} (k_1 + k_2)/4\pi dA$	Mean breadth
$\chi = \int_{\partial K} (k_1 \cdot k_2)/4\pi dA$	Euler characteristic

(Schneider *et al.*, 2013). Note that there is often more contrast in the proton density than in the neutron density.

The Minkowski functionals for these surfaces are calculated by integrating their principle curvatures k_1 and k_2 over the surface area as shown in Table II. Recall that positive curvature is convex, while negative curvature is concave. The sign of two Minkowski functionals B and χ is often sufficient to characterize the phase of the pasta, as shown in Table III.

The mean breadth can be thought of as a measure of the convexity or concavity of the pasta. At high density we expect the pasta will contain voids, which are concave, while at low density the pasta will contain many isolated structures (nuclei), which are convex.

The Euler characteristic is unique among the Minkowski functionals in that it quantifies the topology. For a periodic surface, the Euler characteristic is proportional to the number of connected components plus the number of cavities minus the number of tunnels (through the system)

$$\chi = \# (\text{connected components}) + \# (\text{cavities}) - \# (\text{tunnels}). \quad (7)$$

Taken together, the mean breadth and Euler characteristic are sufficient to quantify the phases of nuclear pasta. Additionally, when the Minkowski functionals are plotted as a function of density, discontinuities in the curvature are observed which correspond to phase transitions in the pasta. By treating curvature as a thermodynamic variable in this way we are able to quantify the phase transitions in nuclear pasta and construct phase diagrams for our model.

In Fig. 4 we show the Minkowski functionals as calculated for one simulation at $Y_p = 0.4$ and $T = 1$ MeV with 51 200 nucleons. This simulation was initialized at a density 0.12 fm^{-3} and the simulation volume was expanded very slowly at a constant rate over 5×10^7 MD time steps until it reached a density of 0.015 fm^{-3} .

There is excellent agreement between the functionals in indicating phase transitions. While one Minkowski functional is sufficient to show most of the phase transitions, when taken together the interpretation becomes more clear. For example,

TABLE III. The eight topological classifications of periodic structures based on the sign of the Euler characteristic χ and the mean breadth B .

	$B < 0$	$B \sim 0$	$B > 0$
$\chi > 0$	sph b		sph
$\chi \sim 0$	rod-1 b	slab	rod-1
$\chi < 0$	rod-2 b	rod-3	rod-2

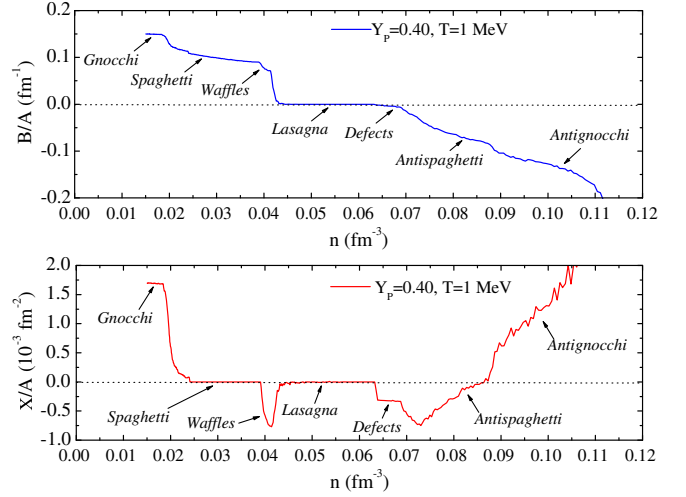


FIG. 4. The normalized Minkowski functionals B/A and X/A as a function of density for a simulation of 51 200 nucleons.

the mean breadth does not change sharply between densities of 0.07 and 0.065 fm^{-3} , but the Euler characteristic shows a clear shift in topology, indicating the presence of “defects” connecting the lasagna plates. Similarly, the mean breadth only weakly shows a transition near densities of 0.042 fm^{-3} but a sharp decline in the Euler characteristic indicates that holes have formed in the lasagna, which we call the waffle phase. The transitions in the Minkowski functionals are also better resolved for slower expansion rates.

Ultimately, it is useful to discriminate between pasta phases so that we can study geometric dependencies of their transport properties using the static structure factor.

2. Static structure factor

The static structure factors $S_p(\mathbf{q})$ and $S_n(\mathbf{q})$ are used to describe how leptons scatter from nucleons in the pasta, which affects observable properties of neutron stars, as described in Sec. IV.C. In short, neutrinos scatter primarily from neutrons which affects supernova neutrino transport, and electrons scatter from protons which affects the thermal conductivity, electrical conductivity, and shear viscosity of the crust.

The proton static structure factor $S_p(\mathbf{q})$ is a coherent sum of amplitudes for scattering from all of the protons in the medium and is defined as

$$S_p(\mathbf{q}) = \frac{1}{N} \left\langle \sum_{j,k=1}^N e^{-i\mathbf{q} \cdot (\mathbf{r}_j - \mathbf{r}_k)} \right\rangle, \quad (8)$$

where j and k are summed over protons, r_j and r_k are proton positions, \mathbf{q} is the momentum transfer, and N is the number of protons in the simulation. The brackets indicate a time average during an MD simulation. The neutron static structure factor $S_n(\mathbf{q})$ is defined in a similar way as a sum over neutrons.

An example of angle-averaged $S_p(q)$ for protons can be seen in Fig. 5. At this density of $n = 0.05 \text{ fm}^{-3}$, pasta is in the waffle phase for a proton fraction $Y_p = 0.3$ and in the lasagna phase for $Y_p = 0.40$. The peaks in $S_p(q)$ near $q = 0.35$ and

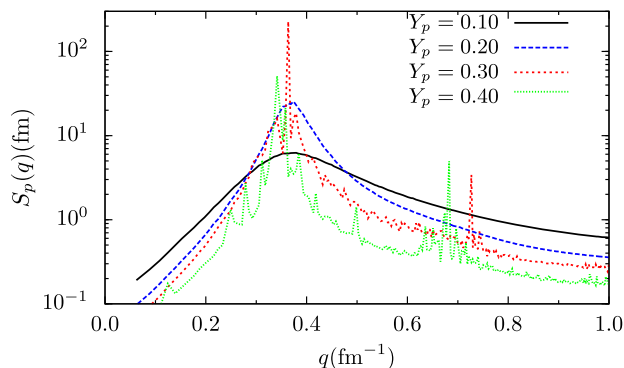


FIG. 5. The angle-averaged proton static structure factor $S_p(q)$ vs momentum transfer q . This is for nuclear pasta with $n = 0.050 \text{ fm}^{-3}$, temperature $T = 1 \text{ MeV}$, and proton fractions $Y_p = 0.10, 0.20, 0.30,$ and 0.40 . From [Schneider *et al.*, 2014](#).

0.70 fm^{-1} correspond to Bragg scattering from the pasta planes.

Once the proton structure factor has been obtained it may be used to calculate the shear viscosity η , electrical conductivity σ , and thermal conductivity κ by integrating $S_p(q)$ over q ([Horowitz and Berry, 2008](#)). For example, the thermal conductivity κ is given by

$$\kappa \approx \frac{\pi k_F k^2 T}{12 \alpha^2 \Lambda_\kappa}, \quad (9)$$

where the Coulomb logarithm Λ_κ describes electron-pasta scattering ([Horowitz and Berry, 2008](#)),

$$\Lambda_\kappa \approx \int_0^{2k_F} \frac{dq}{q} \left(1 - \frac{q^2}{4k_F^2}\right) S_p(q). \quad (10)$$

The neutrino opacity of the pasta can similarly be calculated by integrating the neutrino-single nucleon scattering cross section, weighted by $S_n(q)$ over q ([Horowitz, Pérez-García, and Piekarewicz, 2004](#)). Once calculated, these parameters allow us to interpret observable properties of neutron stars.

C. Observables

In this section we discuss astrophysical implications of the presence of a pasta layer. Specifically, we discuss the relevance of pasta to the scattering of supernova neutrinos in [Sec. IV.C.1](#), pulsar spin periods, and magnetic field decay in [Sec. IV.C.2](#), and to late time crust cooling in [Sec. IV.C.3](#).

1. Supernova neutrino-pasta scattering

The structure of conventional materials can be studied with x-ray diffraction. For example, the Advanced Photon Source (APS) at Argonne National Laboratory produces well-collimated beams of perhaps 10^{15} x-ray photons per second.

Similarly, it may be possible to study astromaterials with neutrino scattering. A core collapse SN, the gigantic explosion of a massive star, provides an extraordinarily intense source of 10^{57} neutrinos per second. The coherent scattering of these neutrinos (from the complex shapes) may

provide evidence of nuclear pasta. Indeed neutrino-pasta scattering may slow diffusion and greatly increase the neutrino signal at late times of 10 or more seconds after stellar core collapse ([Horowitz *et al.*, 2016](#)). Supernova neutrinos are observed in large underground detectors such as Super-Kamiokande ([Scholberg, 2012](#)). Thirty years ago, we saw about 20 events from SN1987a ([Costantini, Ianni, and Vissani, 2004](#)). We expect many thousands of events from the next galactic core collapse SN, which will allow us to probe SN and proto-NS interiors ([Scholberg, 2012](#)).

2. Spin period

The existence of nuclear pasta in the inner crust has been proposed to explain the absence of isolated slowly spinning ($P > 12 \text{ s}$) x-ray pulsars ([Pons, Viganò, and Rea, 2013](#)).

Young neutron stars with strong magnetic fields ($B > 10^{14} \text{ G}$), called magnetars, are observed to have spin periods P of 2–12 s. These neutron stars spin down by emitting magnetic dipole radiation, thus losing rotational energy as electromagnetic radiation.

Given the strength of their magnetic fields one would expect that their rotational period would decrease quickly after formation, reaching rotational periods of 20–30 s. However, no such population of isolated slowly rotating neutron stars is observed.

This can be reconciled by supposing the magnetic field decays quickly, in approximately 1 Myr. For this to be the case, there must be an electrically resistive component to the neutron star that causes the electric currents supporting the magnetic field to dissipate.

This resistive component cannot be found in the core; the protons are superconducting and thus there will be little dissipation of the currents. If the crust is resistive then electric currents can decay by losing energy to joule heating of the crust. In this case, electron scattering from impurities is the dominant dissipative process.

At the base of the inner crust near the crust-core boundary, we find the pasta layer which can be heterogeneous. Nuclear matter in the pasta layer is expected to have complex shapes with unusual charge distributions. Even symmetric pasta phases may have defects, effectively acting like impurities for electron scattering ([Schneider *et al.*, 2016](#)).

Pons considered magnetic field configurations in the crust that do not penetrate into the core. Then, assuming that the pasta layer has a high impurity parameter compared to the rest of the star, Pons showed that the magnetic field will decay by 1 to 2 orders of magnitude within 0.1–1 Myr. This would produce a population of isolated x-ray pulsars all with spin periods less than 12 s, consistent with observations. Pons's assumption that the pasta has a high impurity parameter is consistent with the results of our molecular dynamics simulations, which suggest that pasta may be well approximated by an impurity parameter of 30–40 ([Horowitz *et al.*, 2015](#); [Schneider *et al.*, 2016](#)).

3. Crust cooling

As seen in [Sec. IV.C.2](#), an impure pasta layer with a low electrical conductivity can dissipate electric currents, causing magnetic fields to decay. In this section, we discuss how the

low thermal conductivity of pasta can affect cooling in quiescent low mass x-ray binaries (LMXB); these are neutron stars with a main sequence companion.

For conventional metals at constant temperature the electrical conductivity is linearly related to the thermal conductivity as described by the Wiedemann-Franz law. This is because free electrons in the metal are both a thermal and an electrical carrier. Similarly, in the neutron star, electrons can serve as both a thermal and an electrical carrier in the crust. Thus, we consider an analogous approach to Pons *et al.* to study crust cooling; what if the pasta is thermally resistive?

In an accreting LMXB mass falls from a companion onto a neutron star and emits x rays. If the accretion stops then the neutron star will cool, and the time evolution of the surface temperature can be used to probe the thermal conductivity deep in the crust.

Observations have been made of MXB 1659-29 for 10 yr into quiescence. The surface temperature 3–10 yr into quiescence is sensitive to the thermal conductivity at densities and depths where we expect to find nuclear pasta, because it takes a cooling wave this long to diffuse from the surface (Horowitz *et al.*, 2015).

In Fig. 6 we show the evolution of the observed surface temperature of MXB 1659-29 for 10 yr into quiescence with cooling curves for two different models. The dashed curve shows the standard cooling model without a thermally resistive layer at the base of the crust. In this model, the crust should have come into equilibrium with the core approximately 1000 days into quiescence, which does not fit the most recent observation which shows that the surface temperature has continued to drop. This observation of late time cooling implies the presence of a resistive layer deep within the crust, which is consistent with our interpretation of pasta as a thermal resistor.

D. Relation to soft condensed matter

There is an interesting analogy between nuclear pasta and soft matter physics, a broad field which studies the properties of a

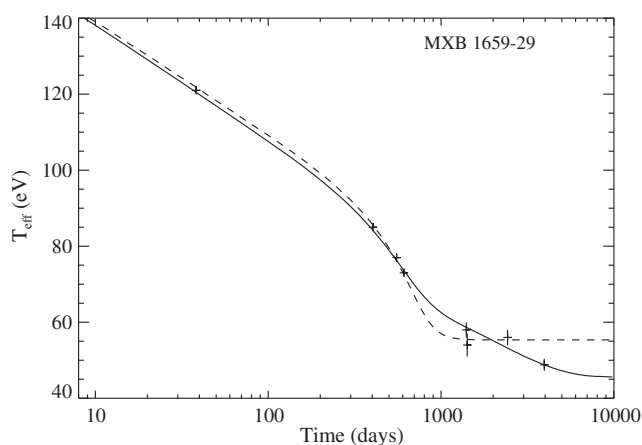


FIG. 6. Surface temperature of MXB 1659-29 vs time since accretion stopped. The dashed line shows the predicted cooling curve for a model without a resistive pasta layer while the solid line shows the predicted cooling curve for a model with a resistive pasta layer. From Horowitz *et al.*, 2015.

variety of materials such as glasses, liquid crystals, and biological materials. Pethick and Ravenhall (1995) discussed several condensed matter properties of neutron star crust matter, while Pethick and Potekhin (1998) considered nuclear pasta as a liquid crystal. Watanabe and Sonoda (2007) discussed nuclear pasta as soft condensed matter; see also Watanabe, Iida, and Sato (2000). Possible gyroid phases of nuclear pasta were considered by Nakazato, Oyamatsu, and Yamada (2009) and Schuettrumpf *et al.* (2015). These are periodic networklike structures with negatively curved surfaces.

At low temperature, approximately 0.5 MeV, our nuclear pasta model is known to freeze and crystallize (Caplan *et al.*, 2015). Other models of nuclear pasta exhibit this behavior as well and have been shown to exhibit a first-order phase transition at low temperature (Alcain, Giménez Molinelli, and Dorso, 2014). Our nuclear pasta model has been found to have a second-order phase transition for fast cooling rates and high proton fraction, similar to the quenching of a liquid to a glass. This is not surprising; the functional form of our nuclear pasta model is comparable to a binary Lennard-Jones interaction with a Coulomb interaction, such as the Kob-Andersen mixture which is known to undergo a glass transition (Kob and Andersen, 1994).

In our work, this glass transition is an artifact of the classical model and is not believed to be present in neutron stars, so we limit our study of pasta to temperatures above this transition. However, glasses are a major topic in soft matter physics, and our model (with appropriately scaled units) could be useful to those seeking to study them.

The soft matter analog can also be seen at higher temperatures from the self-assembly of nuclear pasta.

In living systems, phospholipids are assembled into cellular organelle membranes with a variety of geometries. These phospholipids have a hydrophilic head with two hydrophobic tails. In an aqueous solution, the heads are attracted to the water while the tails are repelled, causing them to aggregate and form vesicles which bound a volume. The relative abundance of water and phospholipids determines the resulting shapes of these vesicles, which can be spheres, cylinders, plates, and matter with voids, similar to nuclear pasta (Seddon, 1990; Buehler, 2015).

In both systems the emergence of these geometries has a common origin in *frustration*. In the pasta model, competition between the nuclear attraction and Coulomb repulsion must be minimized. In the phospholipids the interaction between the hydrophilic heads and hydrophobic tails with the water, and the bending energy of the membrane, must be minimized. It is remarkable that despite the differences in the interactions at play, and a difference in density of 10^{14} , both systems have this coarse-grained self-assembly in common.

As one example, the defects that we observe in our simulations have a distinct chirality and they spontaneously organize to form dipoles, quadrupoles, and octopoles of alternating left and right handedness. Recently, a geometrically comparable structure was observed in the endoplasmic reticulum of mouse cells, which can be seen in Fig. 7 (Terasaki *et al.*, 2013). In both systems the parallel plates are connected by helicoidal ramps which are geometrically similar to spiral ramps in parking garages (Berry *et al.*, 2016). These helicoids

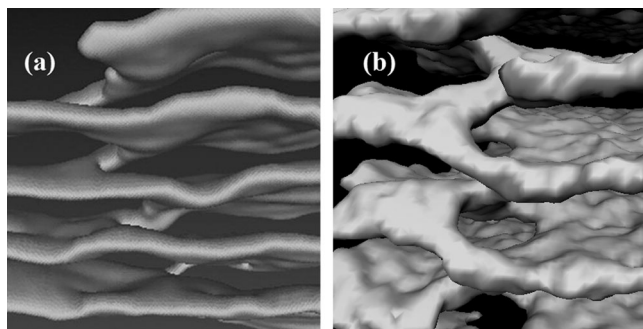


FIG. 7. Comparison of helicoidal ramps in (a) electron micrograph of endoplasmic reticulum at a density near 1 g/cm^3 . From Terasaki *et al.*, 2013. (b) Nuclear pasta simulations at a density of 10^{14} g/cm^3 .

are found in dipoles or quadrupoles of alternating helicity. Additionally, the dipolar helicoids are found at an approximately 45° angle with respect to the parallel plates, and the quadrupoles are oriented at 90° with respect to the plates.

We see from this correspondence that the self-assembly physics seen in our pasta model belongs to a more general class of materials, such as gels and liquid crystals, and perhaps our model (with appropriately scaled units) can be useful to soft matter physicists seeking to simulate these systems.

V. SUMMARY AND PERSPECTIVE

For this Colloquium, we defined astromaterial science as the study of materials, in astronomical objects, that are qualitatively denser than materials on Earth. We discussed one hard astromaterial, Coulomb crystals, and one soft astromaterial, nuclear pasta.

Coulomb crystals are present in the cores of white dwarfs and the crusts of neutron stars, forming when the stars cool and freeze. Our large-scale molecular dynamics simulations of the breaking stress of NS crust suggest it is the strongest material known, some 10×10^9 times stronger than steel. This strong crust can support large mountains that, on a rapidly rotating neutron star, can be a source of detectable gravitational waves.

Nuclear pasta is an example of a soft astromaterial. It is expected near the base of the NS crust. Competition between nuclear attraction and Coulomb repulsion rearranges neutrons and protons into complex nonspherical shapes such as flat sheets (lasagna) or thin tubes (spaghetti). Our semiclassical molecular dynamics simulations of nuclear pasta can be used to calculate transport properties including shear viscosity, thermal conductivity, electrical conductivity, and neutrino opacity, which are relevant for interpreting a variety of observations of neutron stars, such as spin down and cooling of accreting binaries in quiescence.

In the near future, one should calculate additional nuclear pasta properties such as the bulk viscosity, shear modulus, and breaking strain. The shear modulus is important for NS crust oscillation frequencies, while the bulk viscosity could dampen collective oscillations. Finally, the breaking strain is important for crust mountains and for star quakes.

New multimessenger observations will advance astromaterial science. The NICER x-ray telescope is scheduled to be installed soon on the International Space Station (Arzoumanian *et al.*, 2014). NICER aims to measure NS radii and constrain the equation of state (pressure versus density) of neutron rich dense matter. Additional x-ray observations of transiently accreting NS will improve our knowledge of crust properties including the thermal conductivity. GW observations of binary NS mergers can constrain the radius and polarizability of NS. Searches for continuous GW from rotating NS will constrain NS shapes and provide strict limits on crust mountains. Finally, we expect many thousands of neutrino events from the next galactic core collapse SN. This could provide strong evidence of nucleons clustering into large nuclear pasta shapes.

ACKNOWLEDGMENTS

We thank Greg Huber for useful discussions. This research was supported in part by DOE Grants No. DE-FG02-87ER40365 (Indiana University) and No. DE-SC0008808 (NUCLEI SciDAC Collaboration). Computer time was provided by the INCITE program. This research used resources of the Oak Ridge Leadership Computing Facility located at Oak Ridge National Laboratory, which is supported by the Office of Science of the Department of Energy under Contract No. DEAC05-00OR22725. This research was supported in part by Lilly Endowment, Inc., through its support for the Indiana University Pervasive Technology Institute, and in part by the Indiana METACyt Initiative. The Indiana METACyt Initiative at IU is also supported in part by Lilly Endowment, Inc. This material is based upon work supported by the National Science Foundation under Grant No. CNS-0521433.

REFERENCES

- Aasi, J., *et al.* (LIGO Scientific Collaboration and Virgo Collaboration), 2013, “Directed search for continuous gravitational waves from the galactic center,” *Phys. Rev. D* **88**, 102002.
- Aasi, J., *et al.*, 2014, “Gravitational Waves from Known Pulsars: Results from the Initial Detector Era,” *Astrophys. J.* **785**, 119.
- Aasi, J., *et al.*, 2016, “Comprehensive all-sky search for periodic gravitational waves in the sixth science run ligo data,” *arXiv*: 1605.03233.
- Abbott, B. P., *et al.* (LIGO Scientific Collaboration and Virgo Collaboration), 2016, “Observation of gravitational waves from a binary black hole merger,” *Phys. Rev. Lett.* **116**, 061102.
- Abbott, B. P., *et al.*, 2017a, “First search for gravitational waves from known pulsars with advanced ligo,” *Astrophys. J.* **839**, 12.
- Abbott, B. P., *et al.* (Virgo, LIGO Scientific Collaborations), 2017, “Upper Limits on Gravitational Waves from Scorpius X-1 from a Model-Based Cross-Correlation Search in Advanced LIGO Data,” *arXiv*: 1706.03119.
- Adams, Walter S., 1914, “An A-Type Star of Very Low Luminosity,” *Publ. Astron. Soc. Pac.* **26**, 198.
- Adams, Walter S., 1915, “The Spectrum of the Companion of Sirius,” *Publ. Astron. Soc. Pac.* **27**, 236.
- Aichelin, J., and H. Stcker, 1986, “Quantum molecular dynamics—a novel approach to n-body correlations in heavy ion collisions,” *Phys. Lett. B* **176**, 14.

- Alcain, P. N., P. A. Giménez Molinelli, and C. O. Dorso, 2014, “Beyond nuclear “pasta”: Phase transitions and neutrino opacity of new “pasta” phases,” *Phys. Rev. C* **90**, 065803.
- Andersson, Nils, Kostas Kokkotas, and Bernard F. Schutz, 1999, “Gravitational radiation limit on the spin of young neutron stars,” *Astrophys. J.* **510**, 846.
- Arzoumanian, Z., *et al.*, 2014, “The neutron star interior composition explorer (nicer): mission definition,” *Proc. SPIE Int. Soc. Opt. Eng.* **9144**, 914420.
- Ball, Philip, 2014, “Material witness: Stellar metallurgy,” *Nat. Mater.* **13**, 431.
- Baym, Gordon, Hans A. Bethe, and Christopher J. Pethick, 1971, “Neutron star matter,” *Nucl. Phys. A* **175**, 225–271.
- Berry, D. K., M. E. Caplan, C. J. Horowitz, Greg Huber, and A. S. Schneider, 2016, “Parking-garage structures in nuclear astrophysics and cellular biophysics,” *Phys. Rev. C* **94**, 055801.
- Bildsten, Lars, 1998, “Gravitational radiation and rotation of accreting neutron stars,” *Astrophys. J. Lett.* **501**, L89.
- Brown, Edward F., and Andrew Cumming, 2009, [arXiv:0901.3115](https://arxiv.org/abs/0901.3115).
- Brush, S. G., H. L. Sahlín, and E. Teller, 1966, “Monte carlo study of a one-component plasma. i,” *J. Chem. Phys.* **45**, 2102.
- Buehler, L., 2015, *Cell Membranes* (Taylor & Francis Group, London).
- Cackett, E. M., *et al.*, 2006, “Cooling of the quasi-persistent neutron star X-ray transients KS 1731-260 and MXB 1659-29,” *Mon. Not. R. Astron. Soc.* **372**, 479.
- Camisassa, Maria E., Leandro G. Althaus, Rene D. Rohrmann, Enrique Garcia-Berro, Santiago Torres, Alejandro H. Corsico, and Felipe C. Wachlin, 2017, “Updated evolutionary sequences for hydrogen-deficient white dwarfs,” *Astrophys. J.* **839**, 11.
- Caplan, M. E., A. S. Schneider, C. J. Horowitz, and D. K. Berry, 2015, “Pasta nucleosynthesis: Molecular dynamics simulations of nuclear statistical equilibrium,” *Phys. Rev. C* **91**, 065802.
- Chamel, Nicolas, 2005, “Band structure effects for dripped neutrons in neutron star crust,” *Nucl. Phys. A* **747**, 109.
- Chugunov, A. I., and C. J. Horowitz, 2010, “Breaking stress of neutron star crust,” *Mon. Not. R. Astron. Soc.* **407**, L54.
- Costantini, Maria Laura, Aldo Ianni, and Francesco Vissani, 2004, “Sn1987a and the properties of the neutrino burst,” *Phys. Rev. D* **70**, 043006.
- Dorso, Claudio, Sergio Duarte, and Jrgen Randrup, 1987, “Classical simulation of the fermi gas,” *Phys. Lett. B* **188**, 287.
- Engstrom, T. A., N. C. Yoder, and V. H. Crespi, 2016, “Crystal chemistry of three-component white dwarfs and neutron star crusts: Phase stability, phase stratification, and physical properties,” *Astrophys. J.* **818**, 183.
- Fontaine, G., P. Brassard, and P. Bergeron, 2001, “The Potential of White Dwarf Cosmochronology,” *Publ. Astron. Soc. Pac.* **113**, 409.
- Garcia-Berro, E., S. Torres, I. Renedo, J. Camacho, L. G. Althaus, A. H. Corsico, M. Salaris, and J. Isern, 2011, [arXiv:1107.3016](https://arxiv.org/abs/1107.3016).
- Gögelein, P., and H. Mütter, 2007, “Nuclear matter in the crust of neutron stars,” *Phys. Rev. C* **76**, 024312.
- Gupta, S., E. F. Brown, H. Schatz, P. Moller, and K.-L. Kratz, 2007, “Heating in the Accreted Neutron Star Ocean: Implications for Superburst Ignition,” *Astrophys. J.* **662**, 1188.
- Hashimoto, M., H. Seki, and M. Yamada, 1984, “Shape of nuclei in the crust of a neutron star,” *Prog. Theor. Phys.* **71**, 320.
- Horowitz, C. J., 2010, “Gravitational waves from low mass neutron stars,” *Phys. Rev. D* **81**, 103001.
- Horowitz, C. J., and D. K. Berry, 2008, “Shear viscosity and thermal conductivity of nuclear “pasta”,” *Phys. Rev. C* **78**, 035806.
- Horowitz, C. J., D. K. Berry, C. M. Briggs, M. E. Caplan, A. Cumming, and A. S. Schneider, 2015, “Disordered nuclear pasta, magnetic field decay, and crust cooling in neutron stars,” *Phys. Rev. Lett.* **114**, 031102.
- Horowitz, C. J., D. K. Berry, and E. F. Brown, 2007, “Phase separation in the crust of accreting neutron stars,” *Phys. Rev. E* **75**, 066101.
- Horowitz, C. J., D. K. Berry, M. E. Caplan, T. Fischer, Zidu Lin, W. G. Newton, E. O’Connor, and L. F. Roberts, 2016, “Nuclear pasta and supernova neutrinos at late times,” [arXiv:1611.10226](https://arxiv.org/abs/1611.10226).
- Horowitz, C. J., and Kai Kadau, 2009, “Breaking strain of neutron star crust and gravitational waves,” *Phys. Rev. Lett.* **102**, 191102.
- Horowitz, C. J., M. A. Pérez-García, and J. Piekarewicz, 2004, “Neutrino-“pasta” scattering: The opacity of nonuniform neutron-rich matter,” *Phys. Rev. C* **69**, 045804.
- Horowitz, C. J., A. S. Schneider, and D. K. Berry, 2010, “Crystallization of Carbon-Oxygen Mixtures in White Dwarf Stars,” *Phys. Rev. Lett.* **104**, 231101.
- Hughto, J., C. J. Horowitz, A. S. Schneider, Zach Medin, Andrew Cumming, and D. K. Berry, 2012, “Direct molecular dynamics simulation of liquid-solid phase equilibria for a three-component plasma,” *Phys. Rev. E* **86**, 066413.
- Hughto, J., A. S. Schneider, C. J. Horowitz, and D. K. Berry, 2011, “Diffusion in Coulomb crystals,” *Phys. Rev. E* **84**, 016401.
- Ichimaru, S., H. Iyetomi, and S Ogata, 1988, “Freezing transition and phase diagram of dense carbon-oxygen mixtures in white dwarfs,” *Astrophys. J.* **334**, L17.
- Jones, M. D., and D. M. Ceperley, 1996, “Crystallization of the one-component plasma at finite temperature,” *Phys. Rev. Lett.* **76**, 4572.
- Kob, Walter, and Hans C. Andersen, 1994, “Scaling behavior in the β -relaxation regime of a supercooled lennard-jones mixture,” *Phys. Rev. Lett.* **73**, 1376.
- Kobyakov, D., and C. J. Pethick, 2014, *Phys. Rev. Lett.* **112**, 112504.
- Kozhberov, A. A., and D. A. Baiko, 2015, “Coulomb crystal mixtures in white dwarf cores and neutron star crusts,” *Phys. Plasmas* **22**, 092903.
- Lamb, D. Q., J. M. Lattimer, C. J. Pethick, and D. G. Ravenhall, 1978, “Hot dense matter and stellar collapse,” *Phys. Rev. Lett.* **41**, 1623.
- Lattimer, J. M., C. J. Pethick, D. G. Ravenhall, and D. Q. Lamb, 1985, “Physical properties of hot, dense matter: The general case,” *Nucl. Phys. A* **432**, 646.
- Lorenz, C. P., D. G. Ravenhall, and C. J. Pethick, 1993, “Neutron star crusts,” *Phys. Rev. Lett.* **70**, 379.
- Loumos, Gregory L., and W. B. Hubbard, 1973, “Solidification of a Carbon-Oxygen Plasma,” *Astrophys. J.* **180**, 199.
- Magierski, P., and P.-H. Heenen, 2002, “Structure of the inner crust of neutron stars: Crystal lattice or disordered phase?” *Phys. Rev. C* **65**, 045804.
- Maruyama, Toshiki, Koji Niita, Kazuhiro Oyamatsu, Tomoyuki Maruyama, Satoshi Chiba, and Akira Iwamoto, 1998, “Quantum molecular dynamics approach to the nuclear matter below the saturation density,” *Phys. Rev. C* **57**, 655.
- Mckinven, Ryan, Andrew Cumming, Zach Medin, and Hendrik Schatz, 2016, “A survey of chemical separation in accreting neutron stars,” *Astrophys. J.* **823**, 117.
- Meadors, G. D., E. Goetz, K. Riles, T. Creighton, and F. Robinet, 2017, “Searches for continuous gravitational waves from scorpius x-1 and xte j1751-305 in ligo’s sixth science run,” *Phys. Rev. D* **95**, 042005.
- Medin, Zach, and Andrew Cumming, 2010, “Crystallization of classical multicomponent plasmas,” *Phys. Rev. E* **81**, 036107.
- Medin, Zach, and Andrew Cumming, 2014, “A signature of chemical separation in the cooling light curves of transiently accreting neutron stars,” *Astrophys. J. Lett.* **783**, L3.

- Medin, Zach, and Andrew Cumming, 2015, “Time-dependent, compositionally driven convection in the oceans of accreting neutron stars,” *Astrophys. J.* **802**, 29.
- Merritt, Rachael L., Edward M. Cackett, Edward F. Brown, Dany Page, Andrew Cumming, Nathalie Degenaar, Alex Deibel, Jeroen Homan, Jon M. Miller, and Rudy Wijnands, 2016, “The thermal state of ks 1731260 after 14.5 years in quiescence,” *Astrophys. J.* **833**, 186.
- Metcalfe, T. S., 2005, *Mon. Not. R. Astron. Soc.* **363**, L86.
- Nakazato, Kenichiro, Kazuhiro Oyamatsu, and Shoichi Yamada, 2009, “Gyroid phase in nuclear pasta,” *Phys. Rev. Lett.* **103**, 132501.
- Newton, W. G., and J. R. Stone, 2009, “Modeling nuclear “pasta” and the transition to uniform nuclear matter with the 3d skyrme-hartree-fock method at finite temperature: Core-collapse supernovae,” *Phys. Rev. C* **79**, 055801.
- Oyamatsu, K., 1993, “Nuclear shapes in the inner crust of a neutron star,” *Nucl. Phys. A* **561**, 431.
- Patruno, A., B. Haskell, and N. Andersson, 2017, “The Spin Distribution of Fast Spinning Neutron Stars in Low Mass X-Ray Binaries: Evidence for Two Sub-Populations,” [arXiv:1705.07669](https://arxiv.org/abs/1705.07669).
- Pethick, C. J., and A. Y. Potekhin, 1998, “Liquid crystals in the mantles of neutron stars,” *Phys. Lett. B* **427**, 7.
- Pethick, C. J., and D. G. Ravenhall, 1995, “Matter at large neutron excess and the physics of neutron-star crusts,” *Annu. Rev. Nucl. Part. Sci.* **45**, 429.
- Pollock, E. L., and J. P. Hansen, 1973, “Statistical mechanics of dense ionized matter. ii. equilibrium properties and melting transition of the crystallized one-component plasma,” *Phys. Rev. A* **8**, 3110.
- Pons, J. A., D. Viganò, and N. Rea, 2013, “A highly resistive layer within the crust of X-ray pulsars limits their spin periods,” *Nat. Phys.* **9**, 431.
- Ravenhall, D. G., C. J. Pethick, and J. R. Wilson, 1983, “Structure of matter below nuclear saturation density,” *Phys. Rev. Lett.* **50**, 2066.
- Renedo, I., L. G. Althaus, M. M. Miller Bertolami, A. D. Romero, A. H. Corsico, R. D. Rohrmann, and E. Garcia-Berro, 2010, “New Cooling Sequences For Old White Dwarfs,” *Astrophys. J.* **717**, 183.
- Rutledge, R. E., *et al.*, 2002, “Crustal Emission and the Quiescent Spectrum of the Neutron Star in KS 1731-260,” *Astrophys. J.* **580**, 413.
- Sagert, I., G. I. Fann, F. J. Fattoyev, S. Postnikov, and C. J. Horowitz, 2016, “Quantum simulations of nuclei and nuclear pasta with the multiresolution adaptive numerical environment for scientific simulations,” *Phys. Rev. C* **93**, 055801.
- Salaris, M., S. Cassisi, A. Pietrinfermi, P. M. Kowalski, and J. Isern, 2010, *Astrophys. J.* **716**, 1241.
- Salaris, Maurizio, Inmaculada Domingues, Enrique Garcia-Berro, Margarida Hernanz, Jordi Isern, and Robert Mochkovitch, 1997, *Astrophys. J.* **486**, 413.
- Schatz, H., *et al.*, 2001, *Phys. Rev. Lett.* **86**, 3471.
- Schneider, A. S., D. K. Berry, C. M. Briggs, M. E. Caplan, and C. J. Horowitz, 2014, “Nuclear “waffles”,” *Phys. Rev. C* **90**, 055805.
- Schneider, A. S., D. K. Berry, M. E. Caplan, C. J. Horowitz, and Z. Lin, 2016, “Effect of topological defects on “nuclear pasta” observables,” *Phys. Rev. C* **93**, 065806.
- Schneider, A. S., C. J. Horowitz, J. Hughto, and D. K. Berry, 2013, “Nuclear “pasta” formation,” *Phys. Rev. C* **88**, 065807.
- Scholberg, Kate, 2012, “Supernova neutrino detection,” *Annu. Rev. Nucl. Part. Sci.* **62**, 81.
- Schuetrumpf, B., M. A. Klatt, K. Iida, J. A. Maruhn, K. Mecke, and P.-G. Reinhard, 2013, “Time-dependent hartree-fock approach to nuclear “pasta” at finite temperature,” *Phys. Rev. C* **87**, 055805.
- Schuetrumpf, B., M. A. Klatt, K. Iida, G. E. Schröder-Turk, J. A. Maruhn, K. Mecke, and P.-G. Reinhard, 2015, “Appearance of the single gyroid network phase in “nuclear pasta” matter,” *Phys. Rev. C* **91**, 025801.
- Schuetrumpf, B., and W. Nazarewicz, 2015, “Twist-averaged boundary conditions for nuclear pasta hartree-fock calculations,” *Phys. Rev. C* **92**, 045806.
- Seddon, John M., 1990, “Structure of the inverted hexagonal (hii) phase, and non-lamellar phase transitions of lipids,” *Biochim. Biophys. Acta, Rev. Biomembr.* **1031**, 1.
- Shternin, P. S., D. G. Yakovlev, P. Haensel, and A. Y. Potekhin, 2007, “Neutron star cooling after deep crustal heating in the X-ray transient KS 1731-260,” *Mon. Not. R. Astron. Soc.* **382**, L43.
- Slattery, W. L., G. D. Doolen, and H. E. DeWitt, 1980, “Improved equation of state for the classical one-component plasma,” *Phys. Rev. A* **21**, 2087.
- Sonoda, Hidetaka, Gentaro Watanabe, Katsuhiko Sato, Kenji Yasuoka, and Toshikazu Ebisuzaki, 2008, “Phase diagram of nuclear “pasta” and its uncertainties in supernova cores,” *Phys. Rev. C* **77**, 035806.
- Sun, L., A. Melatos, P. D. Lasky, C. T. Y. Chung, and N. S. Darman, 2016, “Cross-correlation search for continuous gravitational waves from a compact object in snr 1987a in ligo science run 5,” *Phys. Rev. D* **94**, 082004.
- Terasaki, Mark, *et al.*, 2013, “Stacked endoplasmic reticulum sheets are connected by helicoidal membrane motifs,” *Cell* **154**, 285.
- Verlet, Loup, 1967, “Computer “experiments” on classical fluids. i. thermodynamical properties of lennard-jones molecules,” *Phys. Rev.* **159**, 98.
- Vicentini, A., G. Jacucci, and V. R. Pandharipande, 1985, “Fragmentation of hot classical drops,” *Phys. Rev. C* **31**, 1783.
- Watanabe, Gentaro, Kei Iida, and Katsuhiko Sato, 2000, “Thermodynamic properties of nuclear pasta in neutron star crusts,” *Nucl. Phys. A* **676**, 455.
- Watanabe, Gentaro, Toshiki Maruyama, Katsuhiko Sato, Kenji Yasuoka, and Toshikazu Ebisuzaki, 2005, “Simulation of transitions between “pasta” phases in dense matter,” *Phys. Rev. Lett.* **94**, 031101.
- Watanabe, Gentaro, Katsuhiko Sato, Kenji Yasuoka, and Toshikazu Ebisuzaki, 2002, “Microscopic study of slablike and rodlike nuclei: Quantum molecular dynamics approach,” *Phys. Rev. C* **66**, 012801.
- Watanabe, Gentaro, Katsuhiko Sato, Kenji Yasuoka, and Toshikazu Ebisuzaki, 2003, “Structure of cold nuclear matter at subnuclear densities by quantum molecular dynamics,” *Phys. Rev. C* **68**, 035806.
- Watanabe, Gentaro, Katsuhiko Sato, Kenji Yasuoka, and Toshikazu Ebisuzaki, 2004, “Phases of hot nuclear matter at subnuclear densities,” *Phys. Rev. C* **69**, 055805.
- Watanabe, Gentaro, and Hidetaka Sonoda, 2007, “Dynamical simulation of nuclear ‘pasta’: soft condensed matter in dense stars,” [arXiv:cond-mat/0502515](https://arxiv.org/abs/cond-mat/0502515).
- Watanabe, Gentaro, Hidetaka Sonoda, Toshiki Maruyama, Katsuhiko Sato, Kenji Yasuoka, and Toshikazu Ebisuzaki, 2009, “Formation of nuclear “pasta” in supernovae,” *Phys. Rev. Lett.* **103**, 121101.
- Wijnands, R., *et al.*, 2004, [arXiv:astro-ph/0405089](https://arxiv.org/abs/astro-ph/0405089).
- Williams, R. D., and S. E. Koonin, 1985, “Sub-saturation phases of nuclear matter,” *Nucl. Phys. A* **435**, 844.
- Winget, D. E., *et al.*, 2009, *Astrophys. J. Lett.* **693**, L6.
- Woolsey, S. E., A. Heger, A. Cumming, R. D. Hoffman, J. P. Pruet, T. Rauscher, J. L. Fisker, H. Schatz, B. A. Brown, and M. Wiescher, 2004, *Astrophys. J. Suppl. Ser.* **151**, 75.