

Interferometric Measurement of the Current-Phase Relationship of a Superfluid Weak Link

S. Eckel,* F. Jendrzejewski, A. Kumar, C. J. Lobb, and G. K. Campbell

Joint Quantum Institute, National Institute of Standards and Technology and University of Maryland, Gaithersburg, Maryland 20899, USA

(Received 25 June 2014; published 22 September 2014)

Weak connections between superconductors or superfluids can differ from classical links due to quantum coherence, which allows flow without resistance. Transport properties through such weak links can be described with a single function, the current-phase relationship, which serves as the quantum analog of the current-voltage relationship. Here, we present a technique for interferometrically measuring the current-phase relationship of superfluid weak links. We interferometrically measure the phase gradient around a ring-shaped superfluid Bose-Einstein condensate containing a rotating weak link, allowing us to identify the current flowing around the ring. While our Bose-Einstein condensate weak link operates in the hydrodynamic regime, this technique can be extended to all types of weak links (including tunnel junctions) in any phase-coherent quantum gas. Moreover, it can also measure the current-phase relationships of excitations. Such measurements may open new avenues of research in quantum transport.

DOI: [10.1103/PhysRevX.4.031052](https://doi.org/10.1103/PhysRevX.4.031052)

Subject Areas: Atomic and Molecular Physics,
Condensed Matter Physics, Superfluidity

A variety of quantum phenomena, such as Josephson effects [1] and quantum interference [2,3], can be observed by weakly connecting two superconductors or superfluids. Such a weak connection can be, for example, a narrow channel or a potential barrier that allows for quantum tunneling. For any weak link, there is a relationship between the current and the phase difference between the two superconductors or superfluids. This current-phase relationship is essential for understanding quantum transport through the weak link [4]. In superconductors, the current-phase relationship of weak links is measured routinely, and such measurements can indicate the presence of exotic quantum states, such as Majorana fermions [5,6] or oscillations in the order parameter [7]. In superfluid liquid helium, this current-phase relationship has been measured, but only indirectly [8]. In degenerate atomic gases, the current-phase relationship has not yet been measured (although many of the effects associated with weak links, e.g., Josephson effects [9,10], have been observed). Here, we interferometrically measure the phase around a ring-shaped superfluid Bose-Einstein condensate (BEC). We use this technique to determine both the magnitude and the sign of persistent currents in the ring. In the presence of a rotating constriction that acts as a weak link, we show how to measure its current-phase relationship.

In a superfluid, the velocity v is related to the gradient of the phase ϕ of the macroscopic wave function by $v = (\hbar/m)\nabla\phi$, where \hbar is Planck's constant divided by 2π and m is the mass of an atom. Ignoring the transverse degrees of freedom, the number current is then $I = (\hbar n_{1D}/m)\nabla\phi$, where n_{1D} is the equivalent 1D density of the fluid along the direction of flow. In a weak link, the superfluid density will vary as a function of position and velocity [11], resulting in a potentially complicated current-phase relationship [12]. For example, in an idealized Josephson junction, which is typically realized with a tunnel barrier, the phase drop across the weak link γ is related to the current through $I = I_c \sin\gamma$, where I_c is its critical current. Because the ideal Josephson junction can be hard to achieve, the current-phase relationships of experimentally realizable weak links can exhibit higher-order harmonics or become multivalued [13–15].

In the present case, we generate a constriction that acts as a weak link in that its critical velocity is much less than that of the rest of the system [4]. However, our weak link is large compared to the healing length of the BEC, leading to a linear current-phase relationship similar to that of a bulk superfluid. Previous works [9,10,16] used weak links that operated in the tunneling regime; however, none of these measured the current-phase relationship.

Weak links have enabled manipulation of ring-shaped BECs, by both controlling a persistent current [17–21] and inducing flow between reservoirs [16,22]. Because the wave function must be single valued, the integral of $\nabla\phi$ around any closed path must be a multiple of 2π . In particular, for a ring with mean radius R , this leads to the constraint $(m/\hbar) \oint v(\theta) R d\theta = 2\pi\ell$, where θ is the azimuthal angle and the integer ℓ is a topological invariant known

*stephen.eckel@nist.gov

Published by the American Physical Society under the terms of the *Creative Commons Attribution 3.0 License*. Further distribution of this work must maintain attribution to the author(s) and the published article's title, journal citation, and DOI.

as the winding number. Transitions between these quantized states can occur when a weak link stirs the superfluid at a critical rotation rate [19,21]. In previous experiments with ring-shaped condensates, the detection method used could measure only the magnitude of the resulting winding number ℓ . Here, we use an interference technique to measure the phase and therefore the current flow around a ring-shaped BEC. We demonstrate that when the rotating weak link is present, there is already a current around the ring even if $\ell = 0$. This implies that while the winding number is quantized, neither the average current nor the total angular momentum of the BEC is quantized.

To measure the phase around the ring, we use two BECs of ^{23}Na atoms held in an optical dipole trap, as shown in Fig. 1(a). One is shaped like a disk and serves as a phase reference. The other is a concentric ring, which can sustain a persistent current. To detect the phase of the wave function and thus the current in the condensate, we interfere the two separate condensates, which can be accomplished after time-of-flight (TOF) expansion. In fact, such interference experiments provided the first conclusive proof that a BEC is a single, phase-coherent object [23]. Later experiments used similar interference techniques to detect quantized vortices [24], to investigate the coherence properties of a superfluid Fermi gas [25], and to study the physics of both two-dimensional [26] and one-dimensional Bose gases [27]. A method similar to that presented here has been independently developed to investigate the supercurrent generated by a rapid quench through the BEC transition [28].

Measuring the interference of our BECs after TOF expansion yields a measurement of $\psi_D^*\psi_D + \psi_D^*\psi_R + \psi_R^*\psi_D + \psi_R^*\psi_R$, where ψ_D is the wave function of the disk

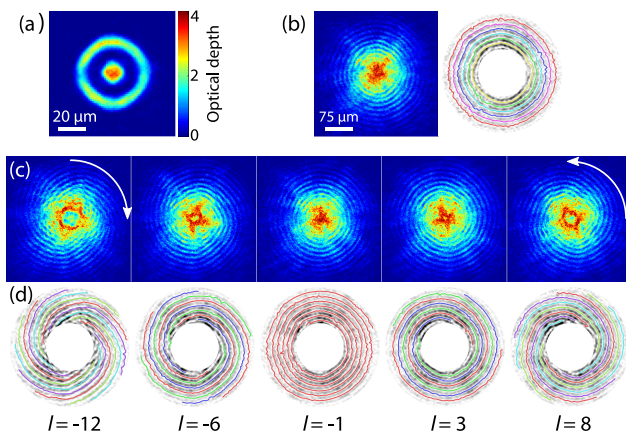


FIG. 1. (a) *In situ* image of the ring and disk BECs with dimensions shown. (b) Example interferogram after 15 ms TOF expansion (left) when there is no current in the ring, including traces of the azimuthal interference fringes to guide the eye (right). (c) Interferograms for various winding numbers, where the arrow indicates the direction of flow. (d) Traces of the interference fringes to guide the eye and count the number of spiral arms. The extracted winding number is shown below the traces.

and ψ_R is the wave function of the ring. The first term $P_D = \psi_D^*\psi_D$ produces no fringes as the disk expands. The terms that are of most interest here contain the ring and the disk, $P_{RD} = \psi_D^*\psi_R + \psi_R^*\psi_D$, and they interfere once ψ_R and ψ_D expand such that they overlap. The last term, $P_R = \psi_R^*\psi_R$, can also produce an interference pattern once the ring has expanded further, such that its characteristic width $|\sigma(t)|$ becomes comparable to R . At this point, the opposite sides of the ring can interfere with each other.

For simplicity, we first consider the interference pattern when there is no weak link present and both BECs are at rest before being released from the trap [Fig. 1(b)]. Without flow, the phase is independent of the angle in both the disk and the ring. The interference term P_{RD} results in concentric circles. The radial position of these azimuthal interference fringes depends on the relative phases between the two condensates; the radial separation between fringes corresponds to a phase difference of 2π . The interference term $P_R = \psi_R^*\psi_R$ produces similar concentric circles, but with a contrast that is below our detection threshold [20,29].

If there is no weak link present but there is a nonzero winding number in the ring, the resulting interference patterns are modified. In this case, the phase of the ring wave function is given by $\phi = \ell\theta$, assuming the ring is sufficiently smooth that both n_{1D} and v are independent of the azimuthal angle θ . Such a phase profile represents a quantized persistent current: the current takes on discrete values ℓI_0 , where $I_0 = n_{1D}\Omega_0 R$ and $\Omega_0 = \hbar/mR^2$. As shown in Refs. [20,29], the interference P_R is modified in this case: a hole with quantized size appears at long times. Previous experiments [19,21,30] demonstrated quantized persistent currents in a ring by releasing the BEC from a ring-shaped trap (without another BEC present) and observing the size of the resulting hole. While this method determines the magnitude of the current, it does not determine the direction.

In addition to modifying the P_R term, a persistent current also modifies the interference term P_{RD} , turning the $\ell = 0$ concentric circles into spirals when $\ell \neq 0$ [Fig. 1(c)]. (The circular structures observed at the center of the clouds for large winding numbers are associated with the emergence of the quantized hole described by P_R .) The combination of the initial azimuthal velocity of the ring atoms and the expansion of the clouds creates spirals in the interference pattern. One can use such spirals to measure the accumulated phase around the ring α by tracking a maximum (or a minimum) of an interference fringe from $\theta = 0$ to $\theta = 2\pi$. The net radial fringe displacement divided by the spacing between fringes yields $\alpha/2\pi$. Because $\alpha = 2\pi\ell$ in the present case, this procedure is equivalent to counting the number of spiral arms, which determines the magnitude of ℓ , and noting their chirality, which determines its sign.

Adding the weak link modifies the interference pattern beyond the spirals described above. The weak link, as

shown in Figs. 2(a) and 2(b), is a density-depleted region in the ring. Once the cloud is released, atoms from either side of the density-depleted weak link expand toward each other and interfere, causing additional interference fringes to appear in the radial direction, as shown in Fig. 2(d). Just as in the case where there was no weak link, we can still measure α by tracking the azimuthal interference fringes around the ring, excluding the weak-link region. To measure their radial displacement after going from $\theta = 0$ to $\theta = 2\pi$, one must extrapolate those fringes back through the weak-link region. Dividing the size of the extrapolated radial displacement of a single fringe by the spacing between the fringes once again yields $\alpha/2\pi$. Here, α is not necessarily a multiple of 2π . This measurement of α allows us to extract the current-phase relationship of the weak link, as shown below.

Before discussing the results, we first describe the experimental techniques. The ring and the disk traps are formed by the combination of two crossed lasers. A red-detuned laser like a sheet creates vertical confinement, while an intensity-masked blue-detuned laser separates the ring trap from the disk trap to form the two BECs. A blue-detuned laser generates the weak link by creating a Gaussian-shaped repulsive potential of height U

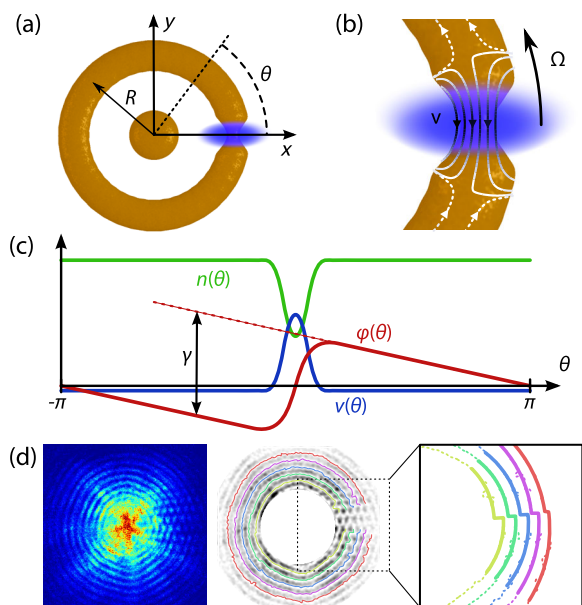


FIG. 2. (a) Schematic of the atoms in the trap with a weak link applied. The coordinate system used throughout is shown; $\theta = 0$ corresponds to the \hat{x} axis. (b) A close-up of the weak-link region. When the weak link is rotated at Ω , atoms flow through the weak link (solid) and around the ring (dashed) as shown by the stream lines. Larger velocities along the stream lines correspond to darker lines. (c) The resulting density $n(\theta)$, velocity $v(\theta)$, and phase $\phi(\theta)$ as a function of angle, with the phase drop γ across the weak link shown. (d) Method of extracting the phase from an interferogram (left). First, we trace the interference fringes around the ring (center), and then we fit the discontinuity across the region where the barrier was (right).

and $1/e^2$ full width of $\approx 6 \mu\text{m}$ (for details on the weak link, see Ref. [22]). This potential depletes the density in a small portion of the ring, as shown in Fig. 2(a). On average, a total of $\approx 8 \times 10^5$ atoms reside in the traps. The ring BEC has a mean radius of $22.4(4) \mu\text{m}$ and annular width (twice the Thomas-Fermi radius) of $\approx 6 \mu\text{m}$ (Uncertainties and error bars in this paper are the uncorrelated combination of 1σ statistical and systematic uncertainties unless stated otherwise.). It contains $\approx 75\%$ of the atoms and has an initial chemical potential $\mu_0/\hbar \approx 2\pi \times (3 \text{ kHz})$. The central disk contains $\approx 25\%$ of the atoms and has a Thomas-Fermi radius of $\approx 5 \mu\text{m}$. While the disk is approximately hard walled, the ring is closer to harmonic with a measured radial trapping frequency of $\approx 390 \text{ Hz}$. The distance between the inner radius of the ring and the disk is $\approx 6.5 \mu\text{m}$.

To prepare the system in a well-defined quantized persistent current state with a chosen ℓ , we stir our weak link at a corresponding Ω . Such stirring lasts for 1 s, during which the rotation rate of the weak link is constant but the strength of the weak-link potential ramps on linearly in 300 ms, holds constant for 400 ms, and ramps off in another 300 ms. To measure the resulting ℓ , we hold the BECs for an additional 100 ms, then release them, and, lastly, image the interference pattern after 15 ms TOF expansion. This procedure produced the data shown in Figs. 1(b) and 1(c).

We extend these results by measuring α in the presence of a weak link as a function of U , the rotation rate Ω , and the initial winding number ℓ . First, we stir to set the initial winding number $\ell = 0$ or ± 1 , as described above. To get the highest fidelity for setting ℓ [95(2)%], we empirically find that $U \approx 1.2\mu_0$ and $\Omega/2\pi \approx \pm 0.9 \text{ Hz}$ or zero, depending on which winding number state we wish to initialize. Second, we stir for 1 s at a new Ω and U . During the first 300 ms of this second stage of stirring, the weak-link potential ramps from zero to the chosen U , and afterwards remains constant. We adjust the starting position such that the weak link is at $\theta = 0$ at the end of this second step. At this point, the trap and the weak-link potential turn off, which releases the cloud. After 17 ms TOF (for slightly better resolution), we again image the cloud.

The above procedures result in a measurement of the phase accumulated around the ring, α , which is related to the current around the bulk of the ring through $I_{\text{bulk}} = n_{1\text{D}}(m/\hbar)\nabla\phi = n_{1\text{D}}(m/\hbar)(\alpha/2\pi R)$. We measure I_{bulk} , normalized to $I_0 = n_{1\text{D}}\Omega_0 R$, as a function of Ω for a variety of different U ; Fig. 3 shows four examples. As shown, there are discrete jumps in I_{bulk} at specific rotation rates. At these critical rotation rates, the system experiences a phase slip that changes ℓ . These critical rotation rates are dependent on U , and can be hysteretic. Figures 3(a) and 3(b) show such hysteresis. The size of the hysteresis loop is consistent with previous measurements [21]. In addition, we measure a nonzero, superfluid I_{bulk} for rotation rates below the critical rotation rate, where, presumably, there are no excitations and $\ell = 0$.

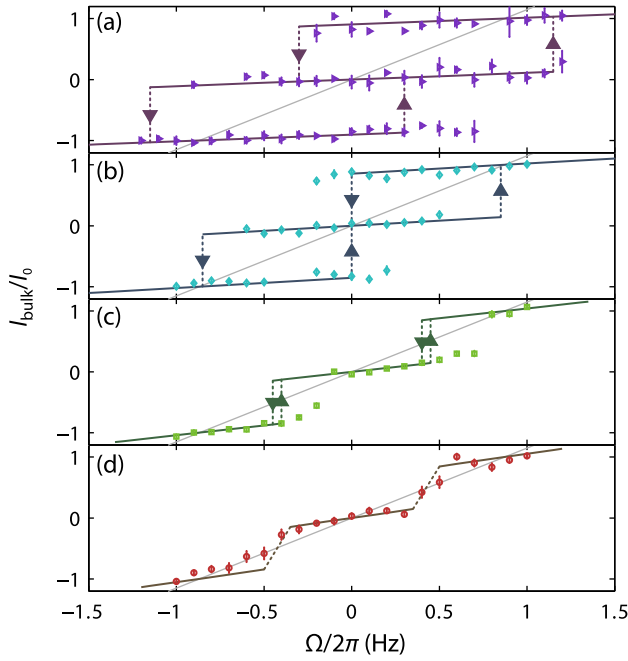


FIG. 3. Plot of the normalized current around the bulk of the ring, $I_{\text{bulk}}/I_0 = \alpha/2\pi$, versus the rotation rate Ω of the weak link for four different weak-link potential strengths U : (a) $0.45\mu_0$, (b) $0.6\mu_0$, (c) $0.7\mu_0$, (d) $0.8\mu_0$. The solid lines are the prediction of our model (see text). The dashed, vertical lines show the predicted transitions between the different winding number branches. The thin, gray, diagonal lines represent the case where all the atoms move around the bulk of the ring with the weak link, i.e., $I_{\text{bulk}} = n_{1D}R\Omega$.

I_{bulk} can be understood in the following way: As the weak link rotates around the ring, it must displace superfluid from in front of its path and superfluid must fill in behind it. The number of atoms that must flow per unit time is proportional to the difference in the density in the weak link and the bulk of the ring. If the flow were only confined to the weak link and in the direction opposite of the rotation, as shown by the solid stream lines in Fig. 2(b), it would violate the condition $\oint v(\theta) R d\theta = 0$. Thus, the atoms in the bulk of the ring must have some velocity in the same direction as the rotation (dashed flow lines) in order to cancel the phase accumulated by the atoms moving through the weak link, as shown in Fig. 2(c). This is analogous to fluxoid versus flux quantization in superconductors [31]: although ℓ must always be quantized, neither the current I_{bulk} nor the total angular momentum is quantized (see Supplemental Material [32]).

Initially, I_{bulk} versus Ω is linear, and Fig. 4(a) shows its measured derivative $dI_{\text{bulk}}/d\Omega|_{\Omega=0}$ as a function of U . As $U \rightarrow 0$, no atoms move, and $I_{\text{bulk}} = 0$ for all Ω . For a given rotation, increasing U displaces more atoms, resulting in a larger current around the bulk of the ring. As expected, $dI_{\text{bulk}}/d\Omega|_{\Omega=0}$ continues to increase until $U = \mu_0$, at which

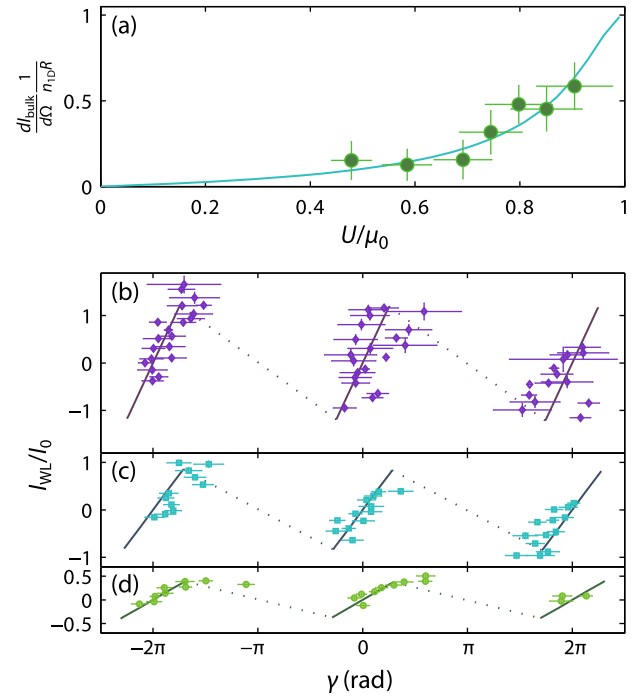


FIG. 4. (a) Derivative of the initial bulk current $dI_{\text{bulk}}/d\Omega$ versus U , normalized to the expected value in the limit where $U/\mu_0 \geq 1$, $n_{1D}R$. The solid line shows the prediction of the local-density approximation model. (b)–(d) Extracted current-phase relationships from the data in Fig. 3, for three different weak-link potential strengths U : (b) $0.45\mu_0$, (c) $0.6\mu_0$, (d) $0.7\mu_0$. γ is the phase across the weak link and I_{WL} is the current through it, normalized to $I_0 = n_{1D}R\Omega_0 \approx 5 \times 10^5$ atoms/s. The solid curves represent the prediction of our theoretical model. The dashed lines merely guide the eye by connecting the multiple branches of the current-phase relationship.

point no atoms can move through the weak link and they all must move around the ring, i.e., $I_{\text{bulk}} = n_{1D}R\Omega$. This limit corresponds to solid-body rotation; we show this limit as thin gray lines in Fig. 3. In a reference frame that rotates with the weak link, there is no flow in this limit and thus $I_{\text{WL}} = 0$, where I_{WL} is the current in the weak link's frame. The opposite limit of $U \rightarrow 0$ corresponds to $I_{\text{WL}} = n_{1D}R\Omega$ (where we have taken $I_{\text{WL}} > 0$ to represent flow that is opposite the rotation).

The I_{bulk}/I_0 versus Ω curves of Fig. 3 can be predicted using a model based on the local-density approximation to the Gross-Pitaevskii equation (see Supplemental Material [32] and Ref. [12]), but assuming a critical velocity as measured in Ref. [21]. (A local-density approximation treatment can be used because the azimuthal length of the weak link of $\approx 6 \mu\text{m}$ is larger than the healing length $\xi = \sqrt{\hbar^2/2m\mu_0} \approx 0.3 \mu\text{m}$.) All parameters are measured independently; none are adjustable. The predictions of this model are shown in Figs. 3 and 4(a) as the solid curves.

The current-phase relationship is best evaluated in the weak link's frame, where $I_{\text{WL}} = n_{1D}R\Omega - I_{\text{bulk}}$. The phase

drop across the weak link γ that corresponds to I_{WL} is given by $\gamma = -2\pi(I_{\text{bulk}}/I_0)$ [see Fig. 2(c)]. For a constant Ω , the current-phase relationship determines how much current flows past the weak link (I_{WL} , measured in the weak link's frame) and how much flows past a fixed point in the bulk of the ring (I_{bulk}). Using these relationships, we extract the current phase-relationship from the data in Fig. 3, the results of which are shown in Figs. 4(b)–4(d).

For our BEC system, our model predicts that the current-phase relationship is roughly linear. Nonlinearities caused by changes in the superfluid density with γ occur when the velocity through the weak link nears the speed of sound; however, because our critical velocity is lower than the speed of sound, these nonlinearities are small. Thus, our weak link is far from an ideal Josephson junction. We also note that our simple model cannot predict the current-phase relationship in the region indicated by the dotted line in Figs. 4(b)–4(d). (The dotted lines merely guide the eye between the predicted branches.) In this branch, we expect dissipation to play a key role in the dynamics.

Ideally, one would want to apply our method to a weak link that could be tuned from the hydrodynamic flow regime observed here to the Josephson or tunneling regime. For the ideal Josephson junction with a sinusoidal current-phase relationship, the I_{bulk} versus Ω lines in Fig. 3 would be curved, a signature that has yet to be observed in degenerate atomic gases. To obtain such a signature, one would need a potential barrier whose width is comparable to the healing length of the condensate to suppress hydrodynamic flow but allow quantum mechanical tunneling.

In conclusion, we demonstrate a technique for measuring the current-phase relationship of a weak link in a dilute-gas superfluid BEC. We demonstrate that a rotating weak link always generates a superfluid current in the bulk of the ring, even when the rotation rate is less than any critical velocity in the system. The magnitude of that current is determined by the current-phase relationship. Our new method allows for better characterization of weak links and, in the case of a tunnel junction, should provide the signature of the existence of idealized Josephson junctions in BEC systems. In addition, measurement of the current-phase relationship enables prediction of the hysteretic energy landscape of our system [21], which, like the energy landscape of a flux qubit, should be quantized [33]. More broadly, it is possible that this method can be extended to measure the current-phase relationships of various excitations, such as solitonic vortices [34]. Lastly, this powerful tool may prove important for studying transport in other, exotic forms of quantum matter, such as unitary Fermi gases [35], Tonks-Girardeau gases [36,37], and quasi-2D condensates near the Berezinskii-Kosterlitz-Thouless transition [26].

The authors thank J. G. Lee for technical assistance and M. Edwards, E. Tiesinga, R. Mathew, and W. T. Hill III for

useful discussions. We thank W. D. Phillips for an extremely thorough reading of the manuscript. This work was partially supported by ONR, the ARO atomtronics MURI, and the NSF through the PFC at the JQI.

-
- [1] B. Josephson, *Coupled Superconductors*, *Rev. Mod. Phys.* **36**, 216 (1964).
 - [2] R. C. Jaklevic, J. Lambe, A. H. Silver, and J. E. Mercereau, *Quantum Interference Effects in Josephson Tunneling*, *Phys. Rev. Lett.* **12**, 159 (1964).
 - [3] Y. Sato and R. E. Packard, *Superfluid Helium Quantum Interference Devices: Physics and Applications*, *Rep. Prog. Phys.* **75**, 016401 (2012).
 - [4] K. K. Likharev, *Superconducting Weak Links*, *Rev. Mod. Phys.* **51**, 101 (1979).
 - [5] L. Fu and C. L. Kane, *Josephson Current and Noise at a Superconductor/Quantum-Spin-Hall-Insulator/Superconductor Junction*, *Phys. Rev. B* **79**, 161408 (2009).
 - [6] I. Sochnikov, A. J. Bestwick, J. R. Williams, T. M. Lippman, I. R. Fisher, D. Goldhaber-Gordon, J. R. Kirtley, and K. A. Moler, *Direct Measurement of Current-Phase Relations in Superconductor/Topological Insulator/Superconductor Junctions*, *Nano Lett.* **13**, 3086 (2013).
 - [7] S. M. Frolov, D. J. Van Harlingen, V. Oboznov, V. V. Bolginov, and V. V. Ryazanov, *Measurement of the Current-Phase Relation of Superconductor/Ferromagnet/Superconductor π Josephson Junctions*, *Phys. Rev. B* **70**, 144505 (2004).
 - [8] E. Hoskinson, Y. Sato, I. Hahn, and R. E. Packard, *Transition from Phase Slips to the Josephson Effect in a Superfluid ^4He Weak Link*, *Nat. Phys.* **2**, 23 (2006).
 - [9] M. Albiez, R. Gati, J. Fölling, S. Hunsmann, M. Cristiani, and M. K. Oberthaler, *Direct Observation of Tunneling and Nonlinear Self-Trapping in a Single Bosonic Josephson Junction*, *Phys. Rev. Lett.* **95**, 010402 (2005).
 - [10] S. Levy, E. Lahoud, I. Shomroni, and J. Steinhauer, *The a.c. and d.c. Josephson Effects in a Bose-Einstein Condensate*, *Nature (London)* **449**, 579 (2007).
 - [11] A nonlinear current-phase relationship arises only if n_{1D} in the weak link depends on the velocity in the weak link.
 - [12] G. Watanabe, F. Dalfovo, F. Piazza, L. Pitaevskii, and S. Stringari, *Critical Velocity of Superfluid Flow through Single-Barrier and Periodic Potentials*, *Phys. Rev. A* **80**, 053602 (2009).
 - [13] A. Baratoff, J. A. Blackburn, and B. B. Schwartz, *Current-Phase Relationship in Short Superconducting Weak Links*, *Phys. Rev. Lett.* **25**, 1096 (1970).
 - [14] F. Piazza, L. A. Collins, and A. Smerzi, *Current-Phase Relation of a Bose-Einstein Condensate Flowing through a Weak Link*, *Phys. Rev. A* **81**, 033613 (2010).
 - [15] B. S. Deaver, Jr. and J. M. Pierce, *Relaxation Oscillator Model for Superconducting Bridges*, *Phys. Lett.* **38A**, 81 (1972).
 - [16] C. Ryu, P. W. Blackburn, A. A. Blinova, and M. G. Boshier, *Experimental Realization of Josephson Junctions for an Atom SQUID*, *Phys. Rev. Lett.* **111**, 205301 (2013).

- [17] A. Ramanathan, K. C. Wright, S. R. Muniz, M. Zelan, W. T. Hill, C. J. Lobb, K. Helmerson, W. D. Phillips, and G. K. Campbell, *Superflow in a Toroidal Bose-Einstein Condensate: An Atom Circuit with a Tunable Weak Link*, *Phys. Rev. Lett.* **106**, 130401 (2011).
- [18] S. Moulder, S. Beattie, R. P. Smith, N. Tammuz, and Z. Hadzibabic, *Quantized Supercurrent Decay in an Annular Bose-Einstein Condensate*, *Phys. Rev. A* **86**, 013629 (2012).
- [19] K. C. Wright, R. B. Blakestad, C. J. Lobb, W. D. Phillips, and G. K. Campbell, *Driving Phase Slips in a Superfluid Atom Circuit with a Rotating Weak Link*, *Phys. Rev. Lett.* **110**, 025302 (2013).
- [20] C. Ryu, K. C. Henderson, and M. G. Boshier, *Creation of Matter Wave Bessel Beams and Observation of Quantized Circulation in a Bose-Einstein Condensate*, *New J. Phys.* **16**, 013046 (2014).
- [21] S. Eckel, J. G. Lee, F. Jendrzejewski, N. Murray, C. W. Clark, C. J. Lobb, W. D. Phillips, M. Edwards, and G. K. Campbell, *Hysteresis in a Quantized Superfluid Atomtronic Circuit*, *Nature (London)* **506**, 200 (2014).
- [22] F. Jendrzejewski, S. Eckel, N. Murray, C. Lanier, M. Edwards, C. J. Lobb, and G. K. Campbell, *Resistive Flow in a Weakly Interacting Bose-Einstein Condensate*, *Phys. Rev. Lett.* **113**, 045305 (2014).
- [23] M. R. Andrews, C. G. Townsend, H.-J. Miesner, D. S. Durfree, D. M. Kurn, and W. Ketterle, *Observation of Interference between Two Bose Condensates*, *Science* **275**, 637 (1997).
- [24] S. Inouye, S. Gupta, T. Rosenband, A. P. Chikkatur, A. Görlitz, T. L. Gustavson, A. E. Leanhardt, D. E. Pritchard, and W. Ketterle, *Observation of Vortex Phase Singularities in Bose-Einstein Condensates*, *Phys. Rev. Lett.* **87**, 080402 (2001).
- [25] C. Kohstall, S. Riedl, E. R. Sánchez Guajardo, L. A. Sidorenkov, J. Hecker Denschlag, and R. Grimm, *Observation of Interference between Two Molecular Bose-Einstein Condensates*, *New J. Phys.* **13**, 065027 (2011).
- [26] Z. Hadzibabic, P. Krüger, M. Cheneau, B. Battelier, and J. Dalibard, *Berezinskii-Kosterlitz-Thouless Crossover in a Trapped Atomic Gas*, *Nature (London)* **441**, 1118 (2006).
- [27] S. Hofferberth, I. Lesanovsky, B. Fischer, T. Schumm, and J. Schmiedmayer, *Non-Equilibrium Coherence Dynamics in One-Dimensional Bose Gases*, *Nature (London)* **449**, 324 (2007).
- [28] L. Corman, L. Chomaz, T. Bienaimé, R. Desbuquois, C. Weitenberg, S. Nascimbene, J. Dalibard, and J. Beugnon, *Quench-Induced Supercurrents in an Annular Two-Dimensional Bose Gas*, [arXiv:1406.4073](https://arxiv.org/abs/1406.4073) [*Phys. Rev. Lett.* (to be published)].
- [29] N. Murray, M. Krygier, M. Edwards, K. C. Wright, G. K. Campbell, and C. W. Clark, *Probing the Circulation of Ring-Shaped Bose-Einstein Condensates*, *Phys. Rev. A* **88**, 053615 (2013).
- [30] S. Beattie, S. Moulder, R. J. Fletcher, and Z. Hadzibabic, *Persistent Currents in Spinor Condensates*, *Phys. Rev. Lett.* **110**, 025301 (2013).
- [31] D. R. Tilley and J. Tilley, in *Superfluidity and Superconductivity*, 3rd ed., edited by D. F. Brewer (Adam Hilger, Bristol, 1990).
- [32] See Supplemental Material at <http://link.aps.org/supplemental/10.1103/PhysRevX.4.031052> for details on both the analysis and local-density approximation modes and for a brief discussion on the lack of quantization of angular momentum.
- [33] J. Clarke and F. K. Wilhelm, *Superconducting Quantum Bits*, *Nature (London)* **453**, 1031 (2008).
- [34] M. J. H. Ku, W. Ji, B. Mukherjee, E. Guardado-Sanchez, L. W. Cheuk, T. Yefsah, and M. W. Zwierlein, *Motion of a Solitonic Vortex in the BEC-BCS Crossover*, *Phys. Rev. Lett.* **113**, 065301 (2014).
- [35] T. Yefsah, A. T. Sommer, M. J. H. Ku, L. W. Cheuk, W. Ji, W. S. Bakr, and M. W. Zwierlein, *Heavy Solitons in a Fermionic Superfluid*, *Nature (London)* **499**, 426 (2013).
- [36] B. Paredes, A. Widera, V. Murg, O. Mandel, S. Fölling, I. Cirac, G. V. Shlyapnikov, T. W. Hänsch, and I. Bloch, *Tonks-Girardeau Gas of Ultracold Atoms in an Optical Lattice*. *Nature (London)* **429**, 277 (2004).
- [37] T. Kinoshita, T. Wenger, and D. S. Weiss, *Observation of a One-Dimensional Tonks-Girardeau Gas*, *Science* **305**, 1125 (2004).