

Holographic angular streaking of electrons and the Wigner time delay

S. Eckart *Institut für Kernphysik, Goethe-Universität, Max-von-Laue-Str. 1, 60438 Frankfurt, Germany*

(Received 13 March 2020; revised 14 June 2020; accepted 21 July 2020; published 13 August 2020)

For a circularly polarized single-color field at a central frequency of 2ω , the final electron momentum distribution upon strong field ionization does not carry any information about the phase of the initial momentum distribution. Adding a weak, corotating, circularly polarized field at a central frequency of ω gives rise to a subcycle interference pattern [holographic angular streaking of electrons (HASE)]. This interference pattern allows for the retrieval of the derivative of the phase of the initial momentum distribution after tunneling $\phi'_{\text{off}}(p_i)$. A trajectory-based semiclassical model (HASE model) is introduced which links the experimentally accessible quantities to $\phi'_{\text{off}}(p_i)$. It is shown that a change in ϕ'_{off} is equivalent to a displacement in position space Δx of the initial wave packet after tunneling. This offset in position space allows for an intuitive interpretation of the Wigner time delay $\Delta\tau_W$ in strong-field ionization for circularly polarized single-color fields. The influence of Coulomb interaction after tunneling is investigated quantitatively.

DOI: [10.1103/PhysRevResearch.2.033248](https://doi.org/10.1103/PhysRevResearch.2.033248)

I. INTRODUCTION

The appearance of a comb of discrete peaks in the energy distributions of electrons upon strong field ionization [1] of single atoms or molecules is well-known as above threshold ionization (ATI) [2–4]. This quantization of energy can be interpreted as a consequence of energy conservation and the finite bandwidth of the incident photons [5]. Alternatively, the time-dependent electric field of the incident light can be considered: For a light pulse with multiple cycles, the periodic release of electron wave packets (grating in the time domain) gives rise to equally spaced interference fringes in energy space. Thus, the periodicity of the light's time-dependent electric field and the discrete value for the photon energy are two sides of the same coin [6]. Upon strong field ionization by a single-color light field at a central frequency of 2ω , the electron energy spectrum shows discrete energy peaks that are separated by $\Delta E = 2\hbar\omega$ ($T_{390} = \frac{2\pi}{2\omega}$, $2\omega = 0.1168$ a.u. corresponds to the frequency of a light field at a wavelength of 390 nm). These discrete electron energies appear as concentric rings in the electron momentum distribution in the plane of polarization.

Using two-color fields that consist of a high-intensity light field at a central frequency of 2ω and a low-intensity light field at a central frequency ω (typically the intensities differ by a factor of 100) leads to the appearance of sidebands between the energy peaks caused by the 2ω field [7]. Light fields that consist of a fundamental and a second-harmonic frequency

that have the same helicity are referred to as corotating two-color (CoRTC) fields [see Fig. 1(a) for an example]. In this case, the intensity of these rings in the electron momentum distribution is modulated as a function of the angle in the plane of polarization [8]. This results in an alternating half-ring (AHR) pattern in momentum space as illustrated in Fig. 1(b). The origin of this pattern is a subcycle interference which has been observed experimentally and reproduced using saddle-point strong field approximation as well as by solving the time-dependent Schrödinger equation [8,9]. Recently, Feng *et al.* [10] have succeeded to model the appearance of sidebands for linearly polarized light by considering semiclassical trajectories that have release times that differ exactly by T_{390} which is one cycle of the 2ω field.

Here, we build on the perspective of interference of wave packets in momentum space [11–13] and refer to this as holographic angular streaking of electrons (HASE). It will be shown that—by using the framework of HASE—changes of the Wigner time delay [14,15] become accessible also in the multiphoton and tunneling regime by measuring final electron momentum distributions [16–18].

The paper is organized as follows. In Sec. II, we present a trajectory-based semiclassical model (HASE model) which explains the alternating half-ring (AHR) pattern as interference between four different trajectories. In this model, we introduce one free parameter, external to the model, which is the initial phase of the trajectories. Section III shows the results of our HASE model for the case that this initial phase is set to zero. Section IV shows how the initial phase modifies the AHR pattern. Section V illustrates how the initial phase is connected to a position offset of the initial wave packet that is modeled by the trajectories. Section VI illustrates how the initial phase is related to the Wigner time delay and Sec. VII provides a recipe explaining how to use our formalism to obtain the Wigner time delay in strong-field ionization from the observable AHR pattern. We conclude with a discussion

*eckart@atom.uni-frankfurt.de

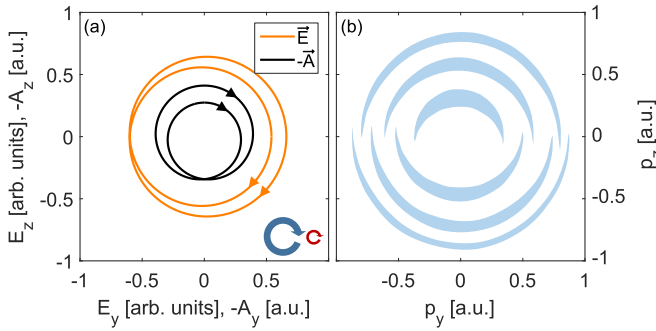


FIG. 1. (a) shows the combined electric field \vec{E} and the negative vector potential $-\vec{A}$ of a co-rotating two-color (CoRTC) field. The helicities of the two colors and the temporal evolution of \vec{E} and $-\vec{A}$ are indicated with arrows. (b) shows a sketch of the alternating half-ring (AHR) pattern in momentum space that is expected for a CoRTC field that is dominated by the light field at a central frequency of 2ω (colored regions indicate high intensity in final momentum space).

of the influence of Coulomb interaction in Sec. VIII. The abbreviation a.u. is used to indicate atomic units throughout the paper.

II. THEORETICAL MODEL

The time-dependent electric field, $\vec{E}(t)$, used throughout this paper is illustrated in Fig. 2(a), together with the corresponding negative vector potential $-\vec{A}(t)$ which is given in Eq. (1). $\vec{E}(t)$ and $\vec{A}(t)$ are linked by $\vec{E} = -\frac{d\vec{A}}{dt}$:

$$\vec{A}(t) = - \begin{bmatrix} 0 \\ \frac{E_{780}}{\omega} \sin(\omega t) + \frac{E_{390}}{2\omega} \sin(2\omega t) \\ \frac{E_{780}}{\omega} \cos(\omega t) + \frac{E_{390}}{2\omega} \cos(2\omega t) \end{bmatrix}. \quad (1)$$

Here, t is the time and ω is the angular frequency of light at a wavelength of 780 nm (the field amplitudes are $E_{390} = 0.04$ a.u. and $E_{780} = 0.004$ a.u. for the two-color field and $E_{390} = 0.04$ a.u. and $E_{780} = 0.0$ a.u. for the single-color field throughout this paper).

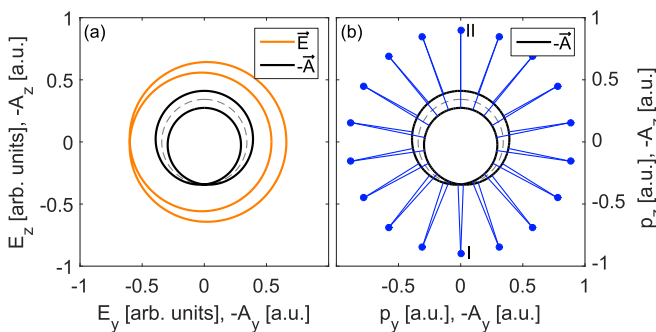


FIG. 2. (a) shows the combined electric field $\vec{E}(t)$ and the negative vector potential $-\vec{A}(t)$. The blue dots in (b) indicate possible final electron momenta \vec{p}_f . Each indicated value of \vec{p}_f is connected by two blue lines to the values $-\vec{A}(t_1)$ and $-\vec{A}(t_2)$. t_1 and t_2 are the two release times that have been obtained from solving Eq. (2) numerically. The vectors of the blue lines reflect the corresponding initial momenta $\vec{p}_{i,1}$ and $\vec{p}_{i,2}$.

In Sec. I–VII of this paper, a simplified two-step model is used (HASE model): The electron is set free by tunnel ionization and then accelerated by the laser field. For the propagation after tunneling, the Coulomb interaction is neglected. Thus, the final electron momentum \vec{p}_f is the sum of the negative vector potential at the time the electron tunnels $-\vec{A}(t)$ and the initial momentum \vec{p}_i after tunneling. The initial momentum \vec{p}_i must be perpendicular to the laser electric field $\vec{E}(t)$ at the instance of tunneling. (The initial momentum component perpendicular to the yz plane (p_x) is set to zero in our HASE model.) This leads to Eq. (2). If one considers only release times t within a single light cycle ($0 < t < T_{780}$, with $T_{780} = 2\pi/\omega \approx 2602$ as), then there are two release times $t_1 \neq t_2$ that lead to the same final electron momentum \vec{p}_f . Each release time t_n must fulfill Eq. (2) to ensure that the initial momentum along the tunneling direction (which is antiparallel to the electric field at the instance of tunneling) is zero (trajectory number $n \in 1, 2, 3, 4$):

$$\begin{aligned} \vec{p}_f &= -\vec{A}(t_n) + \vec{p}_{i,n} \\ &= -\vec{A}(t_n) + \frac{p_n}{|\vec{E}(t_n)|} \begin{pmatrix} 0 \\ E_z(t_n) \\ E_y(t_n) \end{pmatrix}. \end{aligned} \quad (2)$$

Here, p_n defines the absolute value and the sign of the initial momentum after tunneling. The sign of p_n is defined such that a positive value of p_n corresponds to a case in which $-\vec{A}(t_n)$ and $\vec{p}_{i,n}$ are parallel and therefore $|\vec{p}_f| > |\vec{A}(t_n)|$ for the field geometry shown in Fig. 2(a). In full analogy, negative values of p_n lead to $|\vec{p}_f| < |\vec{A}(t_n)|$.

Solving Eq. (2) numerically leads to two possible initial momenta ($\vec{p}_{i,1}$ and $\vec{p}_{i,2}$) for every final electron momentum \vec{p}_f . This gives rise to a two-path interference. The two possible pathways to the same final electron momentum are illustrated in Fig. 2(b): For several final electron momenta, the two possible vector potentials that lead to these final electron momenta are indicated by connecting the respective $-\vec{A}(t_1)$ and $-\vec{A}(t_2)$ (using blue lines) with the final electron momenta (indicated by blue dots). Interestingly, the lines for the dot labeled with I in Fig. 2(b) have a finite intermediate angle. Closer inspection reveals that this is the case for all pairs of lines except for the dot that is labeled with II in Fig. 2(b).

To be able to model intra- and intercycle interference on the same footing using a semiclassical model, we consider four wave packets (release times $t_1, t_2, t_3 = t_1 + T_{780}, t_4 = t_2 + T_{780}$, $\vec{p}_{i,1} = \vec{p}_{i,3}$, and $\vec{p}_{i,2} = \vec{p}_{i,4}$). The phases of the four semiclassical trajectories (trajectory number $n \in 1, 2, 3, 4$) at the time $t_f = t_4$ are modeled by using Eq. (3). See, e.g., Ref. [19–22] for an overview regarding semiclassical trajectories:

$$\phi_n(\vec{p}_f, t_f) = \frac{I_p t_n}{\hbar} - \phi_{\text{prop}}(\vec{p}_f, t_n, t_f) + \phi_{\text{off}}. \quad (3)$$

Here, I_p denotes the ionization potential ($I_p = 15.76$ eV is used, which is the ionization potential of argon) and ϕ_{off} is an offset phase (for the sake of simplicity, this offset phase can be considered to be zero until the discussion of Fig. 6). $I_p t_n$ models the phase evolution of the electron in its bound state. $\phi_{\text{prop}}(\vec{p}_f, t_n, t_f)$ describes the change of the electron's phase after tunneling, starting from the release time t_n until

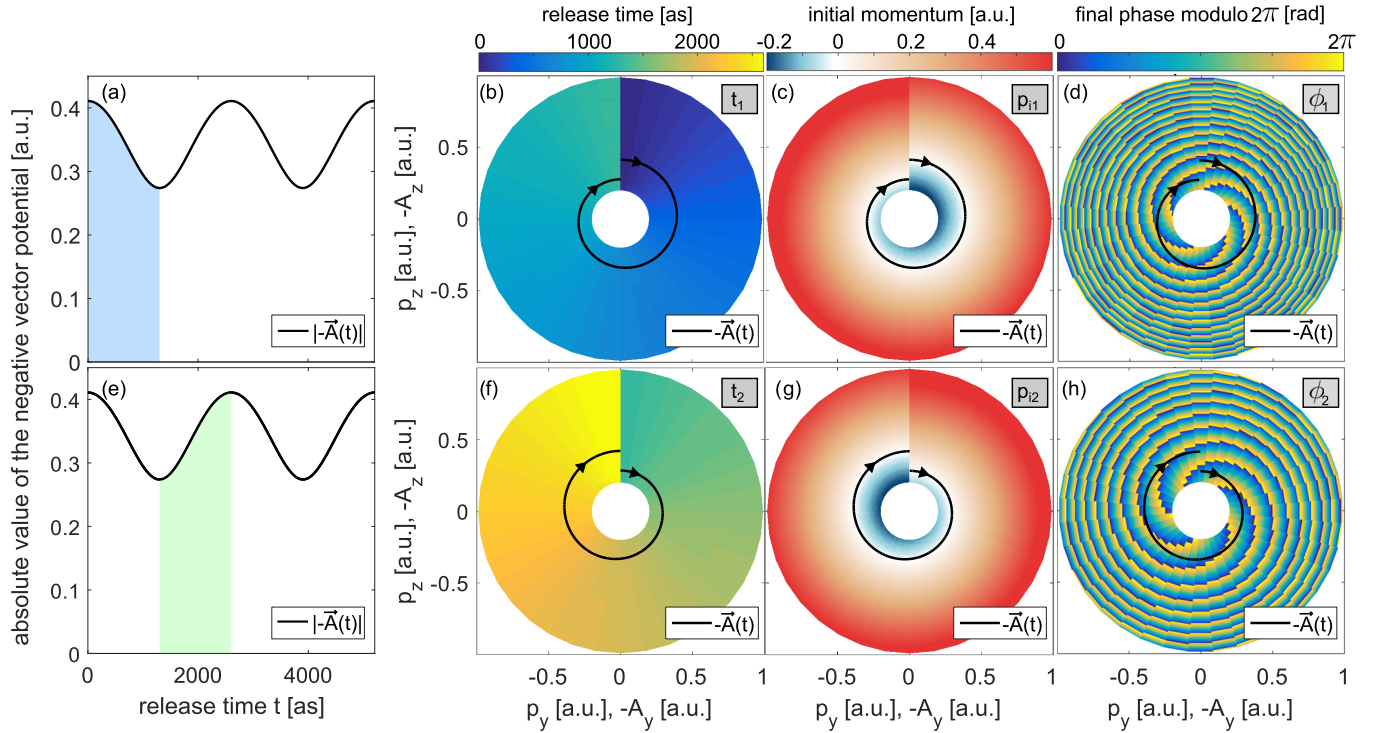


FIG. 3. (a) illustrates the absolute value of the negative vector potential $|\vec{A}(t)|$ and highlights the first half-cycle ($0 < t \leq T_{390}$) of the two-cycle light field in blue. $|\vec{A}(t)|$ is shown as a black line in all panels. (b) [(c)] shows the electron release time [initial momentum] as a function of the final electron momentum. (d) depicts the final phase modulo 2π as a function of the final electron momentum. (e)–(f) show the same as (a)–(d) but using the second half-cycle ($T_{390} < t \leq 2T_{390}$). The black arrows in (b)–(d) and (f)–(h) indicate the temporal evolution of $-\vec{A}(t)$.

the final time t_f . At the time t_f , the electron possesses the final momentum \vec{p}_f . Throughout this paper, the final time is set to $t_f = t_4$. For every considered trajectory ($n \in 1, 2, 3, 4$), the change in phase after tunneling is described by the integral of the electron's energy over time [19]:

$$\begin{aligned} \phi_{\text{prop}}(t_n, t_f, \vec{p}_f) &= \frac{1}{\hbar} \int_{t_n}^{t_f} \frac{p_y^2(t) + p_z^2(t)}{2m_e} dt \\ &= \frac{1}{\hbar} \int_{t_n}^{t_f} \frac{(A_y(t) + p_{yf})^2 + (A_z(t) + p_{zf})^2}{2m_e} dt. \end{aligned} \quad (4)$$

Here, $m_e = 1$ a.u. is the electron's mass and $\hbar = 1$ a.u. is the reduced Planck constant. For Eq. (4), it is used that the instantaneous momentum can be expressed by the difference of the instantaneous vector potential $\vec{A}(t)$ and the final momentum \vec{p}_f . Thus, the semiclassically modeled wave function at a given final electron momentum \vec{p}_f is given by

$$\Psi(\vec{p}_f) = \sum_{n=1}^4 B(p_n) \exp(i\phi_n(\vec{p}_f, t_f)). \quad (5)$$

Here, $B(p_n)$ is the amplitude which is given by the square root of the existence probability of the respective trajectory [for the sake of simplicity, the amplitude $B(p_n)$ can be considered to be one until the discussion of Fig. 6]. Finally, the experimentally accessible intensity in final electron momentum space is modeled by $|\Psi(\vec{p}_f)|^2$.

III. NUMERICAL EXAMPLES WITHOUT OFFSET PHASE

In the following, the theoretical HASE model is used to produce numerical results. In all examples, two optical cycles of the two-color field are considered. The absolute value of the negative vector potential $|\vec{A}(t)|$ is shown as a black line in Fig. 3(a) and the first half-cycle ($0 < t \leq T_{390}$) is highlighted in blue. For radial momenta $p_r = \sqrt{p_y^2 + p_z^2} \in [0.2, 1]$, Eq. (2) is solved numerically. The release time t_1 is depicted as a function of the final electron momentum in Fig. 3(b). As expected, the release time increases monotonically with the angle in the plane of polarization [23]. Figure 3(c) shows the initial momentum $\vec{p}_{i,1}$ as a function of the final electron momentum. Using Eq. (3) with an offset phase of zero ($\phi_{\text{off}} = 0$ rad) allows for the calculation of the phase as a function of the final electron momentum [see Fig. 3(d)].

Figures 3(e)–3(h) are generated in analogy to Figs. 3(a)–3(d) but here the release time is restricted to $T_{390} < t_2 \leq 2T_{390}$. In Figs. 3(c) and 3(g), it can be nicely seen that the value of the initial momentum is zero at final momenta that coincides with the negative vector potential and increases (decreases) for increasing (lower) radial momenta.

In Figs. 4(a)–4(d) the differences of the first and second row in Fig. 3 are presented. The ionization times that are compared are highlighted in Fig. 4(a). The differences in release time $t_{\text{diff}} = t_2 - t_1 - T_{390}$ are shown in Fig. 4(b) as a function of the final momentum. Strikingly, the difference is not zero but values of more than 100 attoseconds are found. The

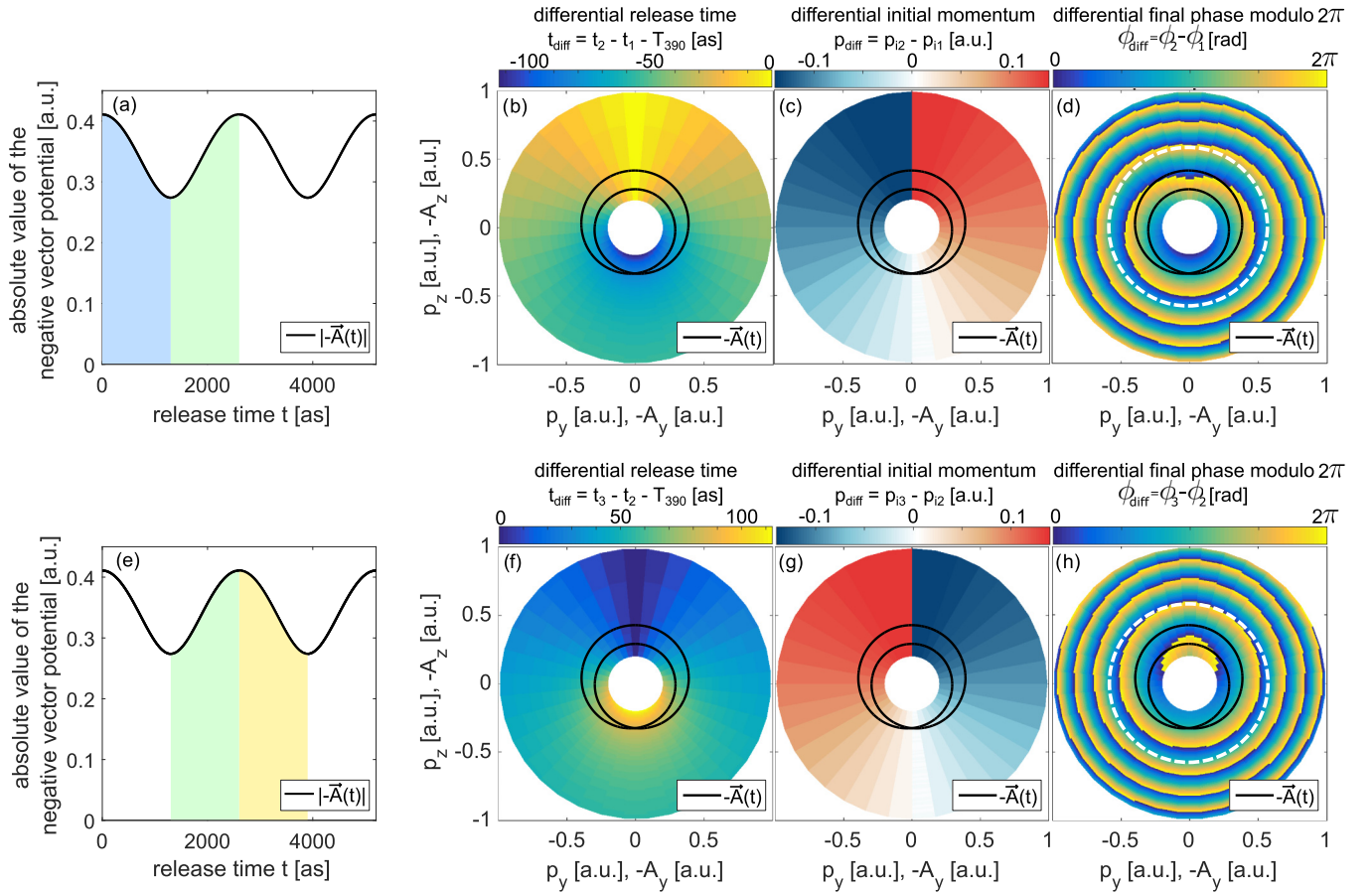


FIG. 4. (a) the relevant ionization times for the first row are highlighted. The first (second) half-cycle is highlighted in blue (green). (b) shows the differential release time of Figs. 3(b) and 3(f). (c) shows the differential initial momentum of Figs. 3(c) and 3(g). (d) shows the differential final phase comparing Figs. 3(d) and 3(h). (e)–(h) are analogous to (a)–(d) but compare the third and the second half-cycle instead of the second and the first half cycle. The dashed white lines in (d) and (h) are circles to guide the eye.

differences in the initial momentum $p_{\text{diff}} = p_{i,2} - p_{i,1}$ are shown in Fig. 4(c) as a function of final momentum and are as expected from the shape of the vector potential. The differences in final phase $\Phi_{\text{diff}} = \Phi_2 - \Phi_1$ are presented in Fig. 4(d) and show a slightly distorted circular symmetry (for a single-color laser field, a perfect circular symmetric distribution would be observed). Figures 4(e)–4(h) are analogous to Figs. 4(a)–4(d) but compare the third and the second half-cycle instead of the second and the first half-cycle [as visualized in Fig. 4(e)]. Because of the definitions $t_3 = t_1 + T_{780}$ and $p_{i,3} = p_{i,1}$ the results in Figs. 4(f) and 4(g) are the same as Figs. 4(b) and 4(c) but with opposite signs. Figures 4(d) and 4(h) are not trivially linked because the final electron phase has to be evaluated using Eq. (3).

The experimentally accessible quantity is $|\Psi(\vec{p}_f)|^2$. Assuming that all four trajectories have the same amplitude [$B(p_n) = 1$] and using an offset phase of zero ($\phi_{\text{off}} = 0$ rad), Eq. (5) can be evaluated for each final electron momentum \vec{p}_f . Each trajectory is released within one of the four half-cycles of the laser field [as illustrated in Fig. 5(a)]. The result is presented in Fig. 5(b) as $|\Psi_{\text{simple}}|^2$ and the expected AHRs in final electron momentum space are reproduced. For comparison, a single-color field at 390 nm with $E_{390} = 0.04$ a.u. is evaluated that leads to the well-known ATI structure in final

electron momentum space without any angular modulations or sidebands [see Fig. 5(d)].

IV. NUMERICAL EXAMPLES WITH OFFSET PHASE

In this section, the influence of a nonzero offset phase ϕ_{off} is investigated. We use an offset phase that depends linearly on the initial momentum p_i by setting $\phi_{\text{off}}(p_i) = \kappa \frac{p_i}{\text{a.u.}}$ (for a real valued κ). Figure 6(a) shows the phase of such a such an initial momentum distribution with $\kappa = \pi$ that has a constant amplitude of $B(p_n) = 1$. Evaluating $|\Psi(\vec{p}_f)|^2$ for these parameters leads to $|\Psi_{\text{linear}}|^2$, which is shown in Fig. 6(c). Strikingly, a rotation of the electron momentum distribution with respect to Fig. 5(b) can be seen. Figure 6(e) quantifies the rotations of the ATI peaks and the sidebands in more detail by plotting the offset angle α as a function of $\phi'_{\text{off}} = \frac{\partial \phi_{\text{off}}}{\partial p_i}$ (separately for every energy peak). The value of the offset angle α is retrieved using the following procedure: The angular distribution for every energy peak is analyzed separately by performing a Fourier transformation to extract the offset angle α from the phase of the lowest frequency component in Fourier space [not the DC component, see Sec. VII for details and note that α is defined as indicated in Figs. 6(c) and 6(d)].

In general, $\phi'_{\text{off}}(p_i)$ does not have to be constant but can vary with p_i . Using the driving field shown in Fig. 1, for

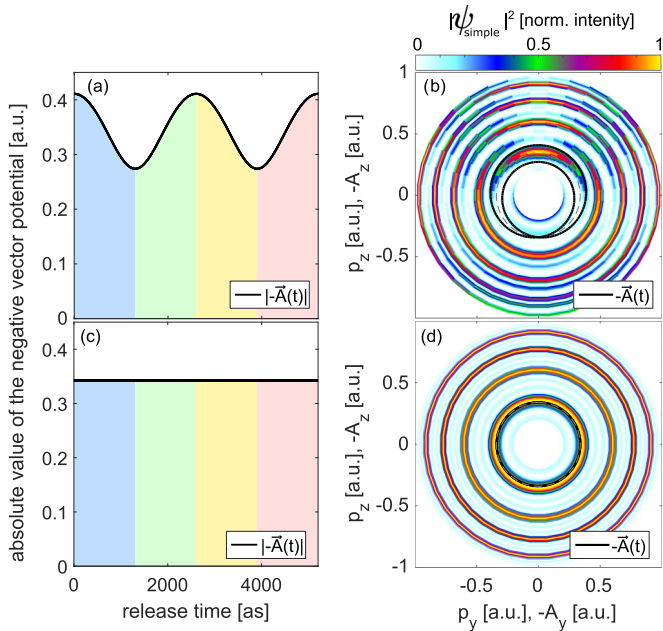


FIG. 5. (a) illustrates that electron release times from all half-cycles are considered. (b) shows the electron momentum distribution $|\Psi_{\text{simple}}|^2$ with the expected alternating half rings. (c), (d) show the same as (a), (b) but using a single-color field with $E_{390} = 0.04$ a.u. The black line represents the negative vector potential and the gray dashed line guides the eye and is the same in (b), (d).

any absolute value of the final electron momentum $|\vec{p}_f|$, the two relevant initial momenta (p_{i1} and p_{i2}) that lead to this final momentum differ by less than 0.15 a.u. [see Figs. 4(c) and 4(g)]. Hence, the offset angle α can be used to infer the value of $\phi'_{\text{off}}(p_i)$ but represents not the exact derivative but approximates the deviate in interval with a length of up to $\Delta p_i = 0.15$ a.u. (In principle, the value of Δp_i could be further reduced by decreasing the intensity of the light field at central frequency of ω , because this also reduces the difference of the minimal and the maximal value of the absolute value of the negative vector potential $|\vec{A}|$.)

Inspecting Fig. 6(a), the choice of $B(p_i) = 1$ appears to be unrealistic. More realistic values of the amplitude distribution are shown in Fig. 6(b) using $B(p_i) = \exp(-\frac{(p_i - p_0)^2}{2\sigma^2})$. Here, $\sigma = 0.2$ a.u. accounts for the width of the initial momentum distribution after tunneling [24] and $p_0 = 0.2$ a.u. is chosen to model a typical nonadiabatic momentum offset [25–27]. The result is shown as $|\Psi_{\text{lin,env}}|^2$ in Fig. 6(d). As expected, this mainly affects the visibility of the inner and outer energy peaks [compare intensity envelopes of Figs. 6(c) and 6(d)]. Interestingly, the rotation angles α are hardly affected [compare Figs. 6(e) and 6(f)]. It can be concluded that for typical [8,9,28,29] light intensities of CoRTC fields, the derivative of the phase of the initial momentum distribution $\phi'_{\text{off}}(p_i)$ can be inferred from the (experimentally accessible) offset angles α in final momentum space.

For the conditions that are used throughout this paper, the Keldysh parameter, $\gamma = \frac{\omega_{\text{eff}}}{eE_0} \sqrt{2m_e I_p}$, is close to $\gamma = 3$. Here, ω_{eff} is the effective angular frequency that is close to the angular frequency of light at a wavelength of 390 nm (see Ref. [27] for details). This is the regime of nonadiabatic

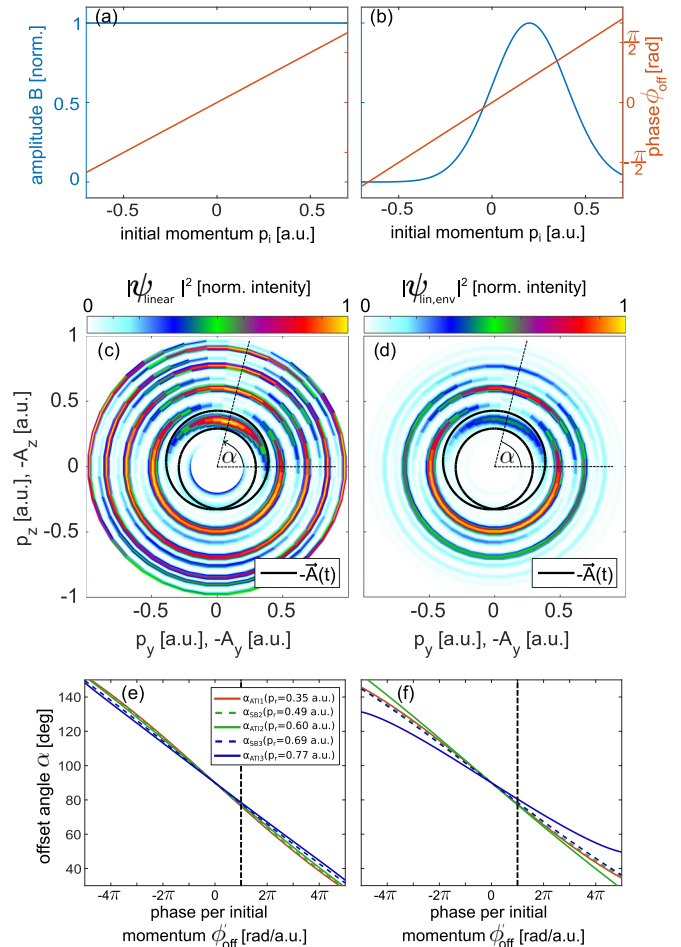


FIG. 6. (a) [b] shows an initial momentum distribution with a constant [nonconstant] amplitude $B(p_i)$ and a linear phase. (c) [(d)] shows the expected intensity in final momentum space $|\Psi_{\text{linear}}|^2$ [$|\Psi_{\text{lin,env}}|^2$] using the initial momentum distribution shown in (a) [(b)]. (e) [(f)] shows the offset angles α that have been extracted from electron momentum distributions as in (c) [(d)]. The offset angles of the ATI peaks are determined as indicated in (c) and (d). The offset angles of the sideband peaks are determined in full analogy but subtracting π to take the alternating pattern of ATI peaks and sidebands into account (see Sec. VII for details).

tunneling [4,25,27]. In our HASE model, the electronic wave packet after tunneling is described by an initial momentum-dependent amplitude and an initial momentum dependent phase [see Figs. 6(a) and 6(b)]. A typical nonadiabatic offset of the amplitudes in momentum space can be modeled as shown in Fig. 6(b). In our HASE model, the phase of the initial wave packet in momentum space is defined by Eq. (3) (for $\phi_{\text{off}} = 0$ rad, this is equivalent to the typical assumption for adiabatic tunneling, see, e.g., Ref. [19]). It is important to realize that the phase of the wave packet might be affected by the nonadiabaticity of the tunneling process. However, $\phi_{\text{off}}(p_i)$ is external to the HASE model, which allows for the modeling of an arbitrary phase structure of the electron wave packet after tunneling, and calculate the resulting interference pattern in the final electron momentum distribution. Setting ϕ'_{off} to certain values that are independent of p_i and investigating α is just one possibility (as has been done for Fig. 6). In turn,

hypotheses about the electron wave packet's phase structure upon nonadiabatic tunneling might be tested using our HASE model or the semiclassical two-step (SCTS) model presented in Sec. VII. We emphasize that we do not claim nor prove that our model is exact. We suggest viewing our theoretical model as a simple man's model to holographic angular streaking that should be benchmarked by comparison with experiments [28,29] and future theoretical studies (also see Sec. VIII).

It should be noted that the subcycle dependence of the ionization rate [30] and Coulomb interaction after tunneling [21,31,32] are not included in the HASE model. The subcycle dependence of the ionization rate is expected to lead to similar deviations as the envelope of the amplitudes of the initial momentum distribution [see Figs. 6(a) and 6(b)]. In Sec. VIII, we present an SCTS model that includes Coulomb interaction after tunneling and compare the results with the results of the HASE model. A validation of the HASE model using a full quantum simulation (e.g., by using the time-dependent Schrödinger equation) has not yet been achieved and is beyond the scope of this paper.

V. HASE AND OFFSETS OF THE BOUND WAVE FUNCTION IN POSITION SPACE

As described above, CoRTC fields allow one to obtain $\phi'_{\text{off}} = \frac{\partial \phi_{\text{off}}}{\partial p_i}$ from measured electron momentum distributions. The next step is to understand the *meaning* of a phase gradient of the initial momentum distribution.

The only position-space-information that is explicitly included in the HASE model is that the initial momentum distribution is zero along the direction of the electric field at the instance of tunneling. However, there is more position-space-information included in the model because a linear phase in momentum space corresponds to a shift in position space (complex momentum space and complex position space are linked by Fourier transformation, also see Refs. [13,33] for similar approaches to measure position information). Let the position-dependent wave function $\Psi(x_i)$ be the Fourier transform of the momentum-dependent wave function $\Psi(p_i)$. Then a real valued position offset Δx leads to the shifted position-dependent wave function $\tilde{\Psi}(x_i) = \Psi(x_i + \Delta x)$. The Fourier transform leads to the wave function $\tilde{\Psi}(p_i)$:

$$\tilde{\Psi}(p_i) = \exp\left(i \frac{p_i \Delta x}{\hbar}\right) \Psi(p_i). \quad (6)$$

Figure 7 illustrates the relation that is described in Eq. (6) by showing a wave function for the initial momentum distribution with a Gaussian distribution of the amplitudes that is centered around zero initial momentum. For a constant phase, the Fourier transform of a Gaussian distribution would be another Gaussian distribution that is centered at zero. The linear phase in Fig. 7(a) [same phase dependence as in Figs. 6(a) and 6(b)] is reflected by an offset in position space by Δx as can be seen in Fig. 7(b).

Identifying $p_i \Delta x / \hbar = \phi'_{\text{off}}$ allows us to link $\Delta x = \phi'_{\text{off}} \hbar$ for the case of a linear phase of the initial momentum distribution as discussed regarding Fig. 6. Thus, it can be concluded that the value of $\Delta x = \phi'_{\text{off}} \hbar$ can be interpreted as a measure of the displacement of the wave packet after tunneling in

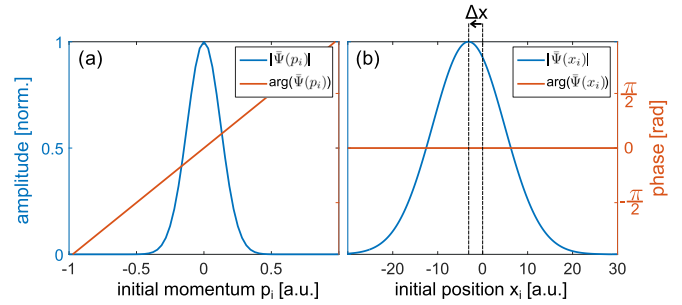


FIG. 7. (a) shows a wave function for an initial momentum distribution with a Gaussian distribution of the amplitudes and a linear phase. (b) shows the Fourier transform of the distribution that is shown in (a). The black vertical lines guide the eye to emphasize the shift of the amplitudes in (b) that is proportional to the slope of the phase in (a) [see Eq. (6)].

position space for the case of a linear phase of the initial momentum distribution. (Positive values of ϕ'_{off} correspond to a displacement of the wave packet after tunneling in position space that is antiparallel to $-\vec{A}(t)$ at the electron release time t .)

Figure 7 suggests that the measurement of the phase gradient in momentum space can be used to probe the amplitudes of the initial state's wave function in position space. This is the position space analog to the much-used fact that tunneling acts like a filter on the initial bound state's wave function in momentum space [24,25,34], which has been used to infer fingerprints of the bound state's wave function in momentum space from the measured final state's momentum distribution (e.g., in Refs. [35,36]). Thus, HASE is an approach to access, e.g., molecular structure and polarization states in position space.

Looking at the entire ionization process as a *black box* and only considering the continuum states allows for an illuminating insight: If Coulomb interaction after tunneling is neglected, any displacement of an initial state by a given vector leads to a displacement of the corresponding final state by the same vector. Let this displacement be antiparallel to the direction of the streaking momentum $\vec{p}_{\text{streak}} = -\vec{A}(t)$, then, for a single-color circularly polarized field, a displacement of the initial position by Δx is equivalent to a continuum wave packet that leaves the *black box* with a time delay Δt . This can be described quantitatively using Eq. (7) and is illustrated in Fig. 8:

$$\begin{aligned} \Delta t &= \frac{m_e \Delta x}{p_f} \\ &= \frac{m_e \hbar}{p_f} \phi'_{\text{off}}(p_i) \\ &= \frac{m_e \hbar}{p_f} \phi'_{\text{off}}(p_f - p_{\text{streak}}). \end{aligned} \quad (7)$$

Here, $m_e = 1$ a.u. is the electron's mass, $\hbar = 1$ a.u. the reduced Planck constant and $p_{\text{streak}} = |-\vec{A}|$. In the next section, it will be shown that, within the HASE model, the time delay Δt is the same as the Wigner time delay.

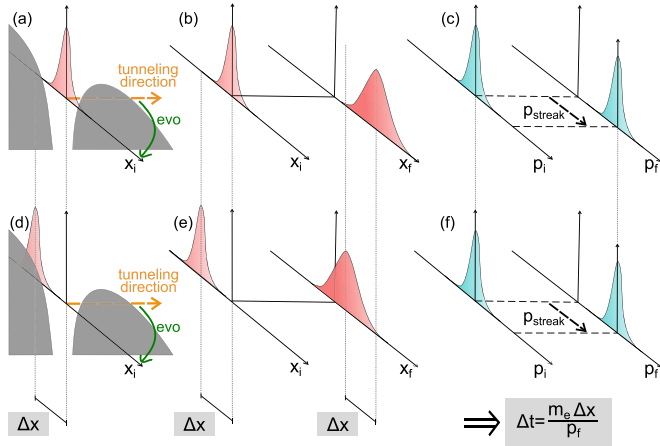


FIG. 8. (a) schematically illustrates an initial bound state in position space. x_i is perpendicular to the tunneling direction. (b) depicts the position distribution along the same direction as in (a) directly after tunneling (x_i) and for the final time (x_f). At the final time t_f , the wave packet is broadened along x_f due to dispersion of the continuum wave packet. Note that the width of the distribution might change during tunneling, which is neglected here for the sake of simplicity. (c) shows the initial momentum distribution along p_i and the corresponding final momentum distribution along p_f which only differs by the momentum that is due to the streaking of the laser p_{streak} . (d)–(f) show the same as (a)–(c) with the only difference being that the initial bound state in position space is displaced by Δx as illustrated in (d). This shifts all positions in (e) by the value of Δx . The final momentum distributions in (c) and (f) are the same. The shift in position Δx of a continuum wave packet with a given momentum p_f allows us to calculate the time delay of the scenario in (a)–(c) relative to the scenario in (d)–(f) using $\Delta t = \frac{m_e \Delta x}{p_f}$. The temporal evolution of the tunneling direction is indicated in (a) and (d) by the arrow labeled with *evo*.

VI. HASE AND THE WIGNER TIME DELAY

The generation of sidebands is closely related to reconstruction of attosecond harmonic beating by interference of two-photon transitions (RABBITT) [37–39]. RABBITT can be used to access the Wigner time delay [14]. By definition, RABBITT only treats two-photon transitions. In this section, it is explained how HASE can be used to access changes of the Wigner time delay for multiphoton ionization and tunnel ionization.

So far, it has been shown that HASE is sensitive to the slope of the phase of the initial momentum distribution, ϕ'_{off} , and that ϕ'_{off} is linked to offsets of the initial position distribution. In the following, the question how ϕ'_{off} affects the phase of the final, semiclassically modeled electronic wave function $\Psi(\vec{p}_f)$ is investigated. To answer this, we assume that the complex valued wave function of the initial momentum distribution does not change if the weak field at the central frequency ω is switched off.

The simple case of a single-color circularly polarized light field with $E_{390} = 0.04$ a.u. is considered and the derivative of the initial phase $\phi'_{\text{off}}(p_i)$ is assumed to be known. In this case, the final electron momentum distribution is independent of the angle in the plane of polarization [see Fig. 5(d)]. We now make use of the fact that changes in $\phi'_{\text{off}}(p_i)$ do not affect

the trajectory or the probability $|\Psi(\vec{p}_f)|^2$ but only influence the final phase $\arg(\Psi(\vec{p}_f))$.

Initial and final momenta are unambiguously linked by $\vec{p}_f = -\vec{A}(t) + \vec{p}_i$ [see Eq. (2)]. Because of the symmetry of circularly polarized single-color light fields, a phase gradient at a given value of p_i directly allows us to quantify the phase change at all final momenta with $|\vec{p}_f| = |\vec{A}(t)| + p_i$. This implies that the phase gradient of the final electron momentum distribution is known at the corresponding energy E . This energy-dependent phase of the semiclassically modeled wave function can be expressed using the concept of the Wigner time delay τ_W . Throughout this paper, the Wigner time delay τ_W is used as defined in Eq. (8) (see Refs. [37,40–42] for similar interpretations of the Wigner time that are closely related to the group delay [41,42]):

$$\tau_W = \hbar \frac{\partial \arg(\Psi)}{\partial E}. \quad (8)$$

Using the trajectory-based HASE model and considering a single-color circularly polarized light field [as for Figs. 5(c) and 5(d)], the initial momentum is unambiguously linked with the final momentum. One can compare two scenarios: The first scenario uses $\phi'_{\text{off}} = 0$ rad/a.u., leading to the semiclassically modeled wave function $\Psi_{\text{simple}}(\vec{p}_f)$ at a given time t_f . In the second scenario, an arbitrary phase of the initial momentum distribution ϕ'_{off} is used (the amplitudes $B(p_i)$ can be shown to be irrelevant regarding τ_W for a single-color circularly polarized light field) leading to the semiclassically modeled wave function $\Psi_{\text{delayed}}(\vec{p}_f)$ at the same time t_f . The two semiclassically modeled wave functions are related by

$$\Psi_{\text{delayed}}(\vec{p}_f) = \Psi_{\text{simple}}(\vec{p}_f) \exp(i\phi_{\text{off}}(p_i)). \quad (9)$$

As a result, the change of the Wigner time delay due to the phase of the initial momentum distribution is given by

$$\begin{aligned} \Delta \tau_W &= \hbar \left(\frac{\partial \arg(\Psi_{\text{delayed}}(\vec{p}_f))}{\partial E} - \frac{\partial \arg(\Psi_{\text{simple}}(\vec{p}_f))}{\partial E} \right) \\ &= \hbar \frac{\partial \arg(\exp(i\phi_{\text{off}}(p_i)))}{\partial E} \\ &= \hbar \frac{\partial \phi_{\text{off}}(p_i)}{\partial E}. \end{aligned} \quad (10)$$

Substituting energy with momentum leads to

$$\begin{aligned} \Delta \tau_W &= \hbar \frac{m_e}{p_f} \frac{\partial \phi_{\text{off}}(p_i)}{\partial p_i} \\ &= \hbar \frac{m_e}{p_f} \phi'_{\text{off}}(p_i) \\ &= \hbar \frac{m_e}{p_f} \phi'_{\text{off}}(p_f - p_{\text{streak}}). \end{aligned} \quad (11)$$

The result in Eq. (11) is equivalent to the previously obtained expression for the delay time Δt [see Eq. (7)]. Thus, we find that Δt and $\Delta \tau_W$ are equivalent within the HASE model. This result allows one to gain very fundamental insight: Within the HASE model, the Wigner time delay for strong field ionization is related to an intuitive shift of the wave function in position space at the tunnel exit Δx and might also be

related to the bound wave function in position space. We emphasize that the equivalence of Δt and $\Delta\tau_W$ is not a result of a full quantum treatment and only a semiclassical result that is based on the HASE model (which neglects Coulomb interaction after tunneling). For realistic potential landscapes, Δt can deviate from $\Delta\tau_W$. A first approach to study such a scenario is presented in Sec. VII.

VII. RECIPE FOR THE EXPERIMENTAL ACCESS TO CHANGES OF THE WIGNER TIME DELAY IN STRONG FIELD IONIZATION

The first step to access the Wigner time delay in strong field ionization within the framework of HASE is to conduct an experiment using a CoRTC field. High ratios of E_{390}/E_{780} decrease the visibility of the sidebands [10] but also reduce the difference of the minimal and the maximal value of the absolute value of the negative vector potential $|\vec{A}(t)|$. As described above, higher values of E_{390}/E_{780} lead to a more accurate mapping of the offset angle, α , to the phase gradient of the initial momentum distribution after tunneling, ϕ'_{off} . Typical values of E_{390}/E_{780} are close to 10 (see, e.g., Refs. [8,9,28,29]). The amplitude of E_{390} should be chosen such that the ionization channel that is investigated is not saturated. $E_{390} = 0.04$ a.u. is a good choice for the single ionization of argon [27].

Second, the offset angles α have to be retrieved from the measured final electron momentum distribution for every energy peak. (In principle, the result of a theoretical calculation that solves the time-dependent Schrödinger equation on a grid could be used as well. In this case, the absolute square of the final electronic wave function in momentum space should be analyzed.) The final electron momentum distribution is considered to be in polar coordinates with $p_x, p_r = \sqrt{p_y^2 + p_z^2}$ and ϕ_{polar} . Here, ϕ_{polar} is the angle in the yz plane [defined in the same way as α in Figs. 6(c) and 6(d)]. In a next step, the angular distribution for a given energy peak is analyzed. Let this angular distribution be represented by a vector \vec{X} with N entries. The discrete Fourier transform \vec{Y} is given by (where $k \in \{1, 2, \dots, N\}$):

$$Y(k) = \sum_{j=1}^N X(j) \exp\left(\frac{(-2\pi i)(j-1)(k-1)}{N}\right). \quad (12)$$

Now, the offset angle for the selected energy peak is given by $\alpha = -\arg(Y(2))$ for the sidebands (energy peaks that vanish if E_{780} is set to zero) and $\alpha = -\arg(Y(2)) - 180^\circ$ for the ATI peaks (energy peaks that do not vanish if E_{780} is set to zero). Now, α represents a distribution that is proportional to $\cos(\phi_{\text{polar}} - \alpha - 180^\circ)$ for sidebands and $\cos(\phi_{\text{polar}} - \alpha)$ for ATI peaks.

Third, the offset angles α can be related to the derivative of the phase of the initial momentum distribution ϕ'_{off} using Fig. 6(e) as a look-up table. From Eq. (11), the change in Wigner time delay, $\Delta\tau_W$, can be directly obtained for an offset angle α . The result is presented in Fig. 9(a). However, this mapping of α to ϕ'_{off} and $\Delta\tau_W$ can only be done if the following conditions are fulfilled: (i) the laser parameters and

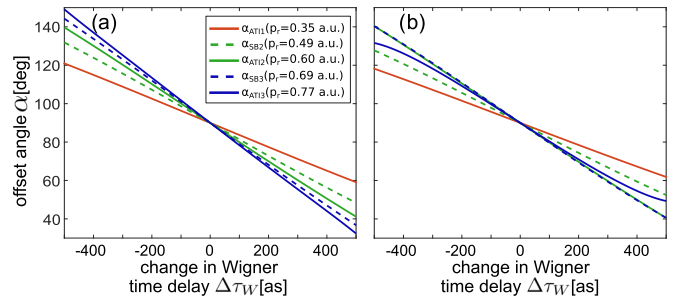


FIG. 9. (a) shows the change in Wigner time delay due to a linear phase of the initial momentum distribution for the case defined in Fig. 6(a). This relates the change in Wigner time delay (for a single-color field with $E_{390} = 0.04$ a.u.) and the offset angles α (that are obtained using a two-color field with $E_{390} = 0.04$ a.u. and $E_{780} = 0.004$ a.u.). (b) is analogous to (a) but uses the amplitude distribution from Fig. 6(b).

the value for the ionization potential I_p are as in this paper, (ii) the envelope of the amplitudes can be neglected [see Figs. 6(f) and Fig. 9(b)], (iii) the subcycle dependence of the ionization rate [30] can be neglected, and (iv) Coulomb interaction after tunneling [32] can be neglected. Conditions (i)–(iii) are not problematic because one could simply rerun the simulations by solving Eqs. (2) and (4), using new laser parameters, the appropriate ionization potential, and an amplitude distribution of the initial momentum distribution that does not only depend on the initial momentum $[B(p_i)]$ but also on the electron release time $[B(p_i, t)]$. This time dependence could be obtained from theory [30]. Alternatively, $B(p_i, t)$ could be estimated directly from the envelope of the measured electron momentum distribution (see, e.g., Refs. [9,23,28]). In general, the measured electron momentum distribution should be normalized by the envelope of the measured electron momentum distribution to remove the modulation of the intensity from the measured interference pattern. An additional benefit of the extracted envelope of the measured electron momentum distribution is that it allows one to estimate the absolute orientation of the laser electric field (even if Coulomb interaction after tunneling is not neglected [32]). Condition (iv) is usually not fulfilled. In Sec. VIII, it will be shown that for small values of α , Coulomb interaction after tunneling just adds an additional, energy-dependent offset angle, α_{Coulomb} , to the offset angle that is due to ϕ'_{off} . Consequently, the measured offset angle, α , can be expressed by $\alpha_{\text{corrected}} = \alpha - \alpha_{\text{Coulomb}}$ to be as precise as possible. An elegant alternative to circumvent problems regarding condition (iv) is to compare two different ionization channels (e.g., different kinetic energy releases for molecular dissociation) and assume that both have the same value α_{Coulomb} . The pairs of measured offset angles ($\alpha_{\text{channel 1}}$ and $\alpha_{\text{channel 2}}$) can be used to calculate the difference in the Wigner time delay for the two channels. This is a good approximation if the mapping of $\Delta\tau_W$ to offset angle α is linear (which is the case for offset angles between 60° and 120°). For this procedure, the contribution of Coulomb interaction cancels out and allows for the experimental access of the difference in the Wigner time delay for the two ionization channels upon tunnel ionization.

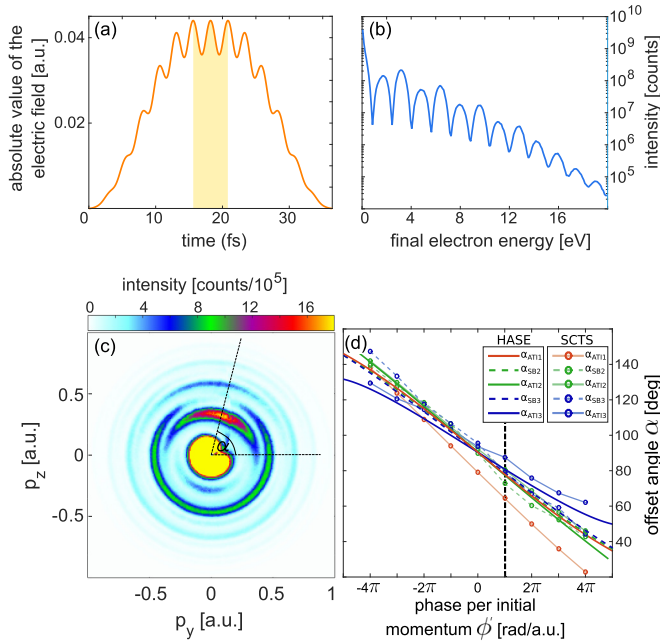


FIG. 10. (a) shows the absolute value of the time-dependent electric field used for the SCTS model. The shaded region indicates the electron release times that were considered for our SCTS model. (b) depicts the electron energy spectrum from the SCTS model. (c) presents the electron momentum distribution in the plane of polarization from the SCTS model with $\phi'_{\text{off}} = 0$ rad/a.u. (d) shows the offset angles, α , as a function of ϕ'_{off} in full analogy to Fig. 6(f). The values of α that are obtained using the SCTS model are labeled with SCTS. The data from Fig. 6(f) are shown for comparison and labeled with HASE. $\phi'_{\text{off}} = \pi$ rad/a.u. is indicated by a black dashed line.

VIII. THE INFLUENCE OF COULOMB INTERACTION AFTER TUNNELING

In the previous sections, Coulomb interaction after tunneling of the electron with its parent ion was neglected. In the next step, we run a SCTS simulation (as in Refs. [12,19]) which includes Coulomb interaction after tunneling. Comparison of the results obtained from the SCTS model with the results from the HASE model shows that Coulomb interaction after tunneling does not qualitatively change the obtained offset angles, α , or the inferred values for the changes of the Wigner time delay, $\Delta\tau_W$. This indicates that—despite its simplicity—the HASE model captures the essential physics of the studied scenario. We emphasize that the SCTS model is not a full quantum simulation and that further experimental and theoretical benchmarks are needed. References [28,29] claim to provide experimental evidence that indicates that the HASE model is a good approximation.

For the SCTS calculation, we use the same CoRTC field as in Fig. 1(a) and add an envelope with a total duration of 14 cycles of the light field ($14T_{780}$). The rising and falling edges of the laser pulse have a sine-square shape and between there is a flat envelope with a duration of two cycles of the light field ($2T_{780}$). The absolute value of the electric field that is used for our SCTS calculation is shown in Fig. 10(a). To minimize the contributions of the rising and falling edges

of the laser pulse in our SCTS model, the electron release time is restricted to the inner two cycles of the light pulse [shaded region in Fig. 10(a)]. In contrast to the HASE model, the SCTS model is a full three-dimensional model which does not neglect the initial momentum components in and against the light propagation direction. The momentum offset $\vec{p}_{0,3D}$ and the ionization probability that are used in the SCTS simulation (see [43]) are chosen to be very similar to those of the HASE model [see Fig. 6(b)]. Using an ionization potential of $I_p = 15.76$ eV, we calculate 250-million semiclassical trajectories. The intensity in final electron momentum space is calculated as a coherent sum of all semiclassically modeled electrons using Eq. (15) from Ref. [19] for a Cartesian three-dimensional grid in momentum space with a bin size of 0.01 a.u. The resulting electron energy distribution is shown as a blue line in Fig. 10(b) and the projection of the electron momentum distribution to the light's polarization plane is shown in Fig. 10(c). Convergence of the SCTS simulation was achieved by implementing the method of phase compression as described in Ref. [44]. Convergence was verified by variation of the grid's bin size. It can be seen in Fig. 10(c) that the intensity of low-energy electrons is very high (note that the color scale is saturated for radial momenta below 0.2 a.u.). This is not unexpected because the intensity of low-energy electrons sensitively depends on the choice of $\vec{p}_{0,3D}$ [25]. For comparison with experimental data, $\vec{p}_{0,3D}$ could be chosen differently (e.g., using results from saddle-point strong field approximation [27]) but the purpose of this section is to analyze the role of Coulomb interaction after tunneling by comparing the HASE model and the SCTS model. To this end, the small radial electron momenta ($p_r < 0.2$ a.u.) are not important because we did not include them in the discussion of the HASE model at all.

Figure 10(c) is the first important result of the SCTS model with respect to the overall aim of this paper. Figure 10(c) is obtained using the SCTS with no additional phase added to the trajectory at the tunnel exit (corresponds to $\phi'_{\text{off}} = 0$ rad/a.u.). In full analogy to the HASE model, the SCTS model is extended adding the offset phase $\phi_{\text{off}}(p_{0,\perp}) = \kappa \frac{p_{0,\perp}}{a.u.}$. To compare the SCTS model and the HASE model, the value of ϕ'_{off} is systematically varied and the rotation angles, α , are obtained as for Fig. 6(f). The results from the SCTS model and the results from the HASE model show excellent agreement [Fig. 10(d)]. In particular, the peaks at medium electron energies (α_{SB2} , α_{AT12} and α_{SB3}) only deviate by a few degrees for a wide range of ϕ'_{off} . For low- and high-electron energies (α_{AT11} and α_{AT13}), deviations by up to 10° are found. Most importantly, it is evident that the slopes of all curves in Fig. 11(a) are similar. This is the first key-finding of this section because this constant slope is the necessary precondition that allows for the straightforward mapping of changes of α to changes of the Wigner time delay (see Secs. III–VII).

The result in Fig. 10(d) shows that $\Delta\alpha$ can be used to determine $\Delta\phi'_{\text{off}}$. To further validate the HASE model, it remains to be shown that ϕ'_{off} allows one to infer $\Delta\tau_W$ as suggested in Eq. (11). In the next step, the validity of Eq. (11) is tested using the SCTS model. To this end, we have performed a second SCTS simulation using a single-color field ($E_{390} = 0.04$ a.u. and $E_{780} = 0$ a.u.) with all other parameters identical to the previous two-color simulation and excluded

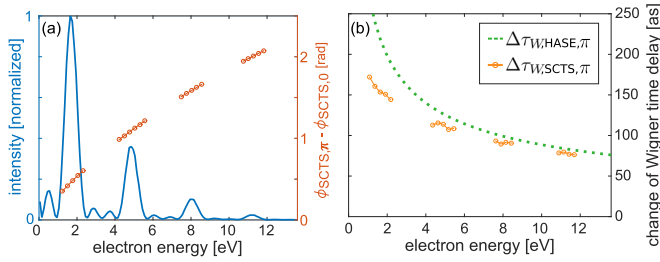


FIG. 11. The blue line in (a) shows the electron energy distribution that is obtained using the SCTS model for the single-color field ($E_{390} = 0.04$ a.u. and $E_{780} = 0$ a.u.). The change of the semiclassical phase, $\phi_{\text{SCTS},\pi}(E) - \phi_{\text{SCTS},0}(E)$, that results in comparing an SCTS simulation with $\phi'_{\text{off}} = \pi$ rad/a.u. and $\phi'_{\text{off}} = 0$ rad/a.u., is shown by the red circles. (b) shows the change of the Wigner time delay according to the SCTS model, $\Delta\tau_{W,\text{SCTS},\pi}$, as orange data points. It should be noted that $\Delta\tau_{W,\text{SCTS},\pi}$ is the derivative of the phase difference that is shown in (a). For comparison, the Wigner time delay from the HASE model, $\Delta\tau_{W,\text{HASE},\pi}$, is shown as green dashed line.

recolliding trajectories (characterized by reaching a minimal distance below 10 a.u. to the nucleus, this is the case for about 5% of all calculated trajectories). The resulting electron energy spectrum is shown as a blue line in Fig. 11(a).

The SCTS calculation does not only give access to the absolute square of the semiclassically modeled wave function (see Eq. (15) from Ref. [19]) but can also be used to investigate the phase of the semiclassically modeled wave function (using the argument of the expression between the dashes in Eq. (15) from Ref. [19]). For a thin slice along the light propagation direction -0.01 a.u. $< p_x < 0.01$ a.u., the change of the semiclassical phase, $\phi_{\text{SCTS},\pi} - \phi_{\text{SCTS},0}$, is investigated. Here, $\phi_{\text{SCTS},\pi}$ [$\phi_{\text{SCTS},0}$] is the phase from the SCTS model using $\phi'_{\text{off}} = \pi$ rad/a.u. [$\phi'_{\text{off}} = 0$ rad/a.u.]. It is found that $\phi_{\text{SCTS},\pi} - \phi_{\text{SCTS},0}$ only depends on the electron's energy, E , which is expected due to the symmetry of circularly polarized light. The energy-dependent value for $\phi_{\text{SCTS},\pi} - \phi_{\text{SCTS},0}$ is shown in Fig. 11(a) in red. This phase difference allows one to express the corresponding change of the Wigner time delay using the SCTS model by

$$\begin{aligned} \Delta\tau_{W,\text{SCTS},\pi}(E) &= \hbar \frac{\partial \phi_{\text{SCTS},\pi}(E)}{\partial E} - \hbar \frac{\partial \phi_{\text{SCTS},0}(E)}{\partial E} \\ &= \hbar \frac{\partial (\phi_{\text{SCTS},\pi}(E) - \phi_{\text{SCTS},0}(E))}{\partial E}. \end{aligned} \quad (13)$$

Equation (13) is evaluated to obtain $\Delta\tau_{W,\text{SCTS},\pi}(E)$, which is shown in Fig. 11(b). To compare $\Delta\tau_{W,\text{SCTS},\pi}(E)$ to the results from the HASE model, the change of the Wigner time delay according to the HASE model is expressed by [see Eq. (11)]:

$$\Delta\tau_{W,\text{HASE},\pi}(E) = \hbar \frac{m_e}{\sqrt{2E}} \frac{\pi \text{ rad}}{\text{a.u.}}. \quad (14)$$

The result for $\Delta\tau_{W,\text{HASE},\pi}(E)$ is shown as a green dashed line in Fig. 11(b). The obtained values for $\Delta\tau_W$ from the SCTS and the HASE model qualitatively agree. For high electron

energies, the agreement is very good and for low-electron energies Coulomb interaction after tunneling reduces $\Delta\tau_W$ by about 30% in the SCTS model compared to the HASE model. This allows one to conclude that the mapping of $\phi'_{\text{off}} = \pi$ rad/a.u. to changes of the Wigner time delay qualitatively agrees for the HASE model and the SCTS model. As expected, the deviations for the first ATI peak are larger than those of the other ATI peaks because Coulomb interaction after tunneling has a stronger impact on slow electrons than it has on fast electrons.

Finally, it should be noted that the choice of $\phi'_{\text{off}} = \pi$ rad/a.u. is chosen without loss of generality because the Wigner time delays shown in Fig. 11(b) are expected to scale linearly with ϕ'_{off} . The fact that the mapping of ϕ'_{off} to $\Delta\tau_W$ [see Eq. (11)] is qualitatively reproduced by the SCTS model is the second key finding of this section.

IX. CONCLUSION

Building on the simplified HASE model, it is shown that the angular distribution of main ATI peaks and sidebands can be used to infer the derivative of the phase of the initial momentum distribution, ϕ'_{off} , from experimentally accessible quantities. Further, it is found that ϕ'_{off} can be related to changes of the Wigner time delay $\Delta\tau_W$ within the HASE model. Finally, an intuitive interpretation of the Wigner time delay for tunnel ionization is suggested that links the Wigner time delay to a displacement of the wave function in position space. The findings from the HASE model are compared to results from an SCTS model that includes Coulomb interaction after tunneling.

In future (coincidence) experiments, the offset angles α of ATI peaks and sidebands could be examined as a function of the kinetic energy release for molecular dissociation, the molecular orientation or the atomic species. Recently, it has been claimed that the angular dependence of the Wigner time delay upon tunnel ionization of molecular hydrogen has been measured using HASE [28]. In another recent work, it has been suggested that the HASE model is not limited to ionization in corotating two-color fields but can also be used to model ionization in counter-rotating two-color fields [29]. In conclusion, HASE paves the road toward the measurement of molecular structure, polarization states, and nonadiabatic fingerprints of tunnel ionization in position space with subcycle temporal resolution.

ACKNOWLEDGMENTS

This work was funded by the German Research Foundation (DFG) through the Priority Programme Quantum Dynamics in Tailored Intense Fields (SPP 1840). Thanks to Daniel Trabert, Kilian Fehre, Alexander Hartung, Jonas Rist, Angelina Geyer, Maksim Kunitski, Horst Schmidt-Böcking, Lothar Ph. H. Schmidt, Till Jahnke, and Reinhard Dörner for fruitful discussions and comments regarding the paper. The SCTS calculations were done using a modified version of a code that was originally developed by Maksim Kunitski and is based on Ref. [19].

- [1] L. V. Keldysh, *Sov. Phys. JETP* **20**, 1307 (1965).
- [2] G. S. Voronov and N. B. Delone, *Sov. Phys. JETP* **23**, 54 (1966).
- [3] R. R. Freeman, P. H. Bucksbaum, H. Milchberg, S. Darack, D. Schumacher, and M. E. Geusic, *Phys. Rev. Lett.* **59**, 1092 (1987).
- [4] M. Yu. Ivanov, M. Spanner, and O. Smirnova, *J. Mod. Opt.* **52**, 165 (2005).
- [5] A. Einstein, *Ann. Phys.* **322**, 132 (1905).
- [6] D. G. Arbó, K. L. Ishikawa, K. Schiessl, E. Persson, and J. Burgdörfer, *Phys. Rev. A* **81**, 021403(R) (2010).
- [7] L. J. Zipp, A. Natan, and P. H. Bucksbaum, *Optica* **1**, 361 (2014).
- [8] M. Han, P. Ge, Y. Shao, Q. Gong, and Y. Liu, *Phys. Rev. Lett.* **120**, 073202 (2018).
- [9] P. Ge, M. Han, Y. Deng, Q. Gong, and Y. Liu, *Phys. Rev. Lett.* **122**, 013201 (2019).
- [10] Y. Feng, M. Li, S. Luo, K. Liu, B. Du, Y. Zhou, and P. Lu, *Phys. Rev. A* **100**, 063411 (2019).
- [11] Y. Huismans, A. Rouzée, A. Gijsbertsen, J. H. Jungmann, A. S. Smolkowska, P. S. W. M. Logman, F. Lépine, C. Cauchy, S. Zamith, T. Marchenko, J. M. Bakker, G. Berden, B. Redlich, A. F. G. van der Meer, H. G. Muller, W. Vermin, K. J. Schafer, M. Spanner, M. Y. Ivanov, O. Smirnova, D. Bauer, S. V. Popruzhenko, and M. J. J. Vrakking, *Science* **331**, 61 (2011).
- [12] S. Eckart, M. Kunitski, I. Ivanov, M. Richter, K. Fehre, A. Hartung, J. Rist, K. Henrichs, D. Trabert, N. Schlott, L. Ph. H. Schmidt, T. Jahnke, M. S. Schöffler, A. Kheifets, and R. Dörner, *Phys. Rev. A* **97**, 041402(R) (2018).
- [13] M. He, Y. Li, Y. Zhou, M. Li, W. Cao, and P. Lu, *Phys. Rev. Lett.* **120**, 133204 (2018).
- [14] E. P. Wigner, *Phys. Rev.* **98**, 145 (1955).
- [15] R. Pazourek, S. Nagele, and J. Burgdörfer, *Rev. Mod. Phys.* **87**, 765 (2015).
- [16] A. T. J. B. Eppink and D. H. Parker, *Rev. Sci. Instrum.* **68**, 3477 (1997).
- [17] O. Jagutzki, A. Cerezo, A. Czasch, R. Dörner, M. Hattas, M. Huang, V. Mergel, U. Spillmann, K. Ullmann-Pfleger, T. Weber, H. Schmidt-Böcking, and G. D. W. Smith, *IEEE Trans. Nucl. Sci.* **49**, 2477 (2002).
- [18] J. Ullrich, R. Moshhammer, A. Dorn, R. Dörner, L. Ph. H. Schmidt, and H. Schmidt-Böcking, *Rep. Prog. Phys.* **66**, 1463 (2003).
- [19] N. I. Shvetsov-Shilovski, M. Lein, L. B. Madsen, E. Räsänen, C. Lemell, J. Burgdörfer, D. G. Arbó, and K. Tókési, *Phys. Rev. A* **94**, 013415 (2016).
- [20] H. Ni, U. Saalmann, and J.-M. Rost, *Phys. Rev. Lett.* **117**, 023002 (2016).
- [21] H. Ni, U. Saalmann, and J.-M. Rost, *Phys. Rev. A* **97**, 013426 (2018).
- [22] N. I. Shvetsov-Shilovski and M. Lein, *Phys. Rev. A* **100**, 053411 (2019).
- [23] P. Eckle, A. N. Pfeiffer, C. Cirelli, A. Staudte, R. Dörner, H. G. Muller, M. Büttiker, and U. Keller, *Science* **322**, 1525 (2008).
- [24] L. Arissian, C. Smeenk, F. Turner, C. Trallero, A. V. Sokolov, D. M. Villeneuve, A. Staudte, and P. B. Corkum, *Phys. Rev. Lett.* **105**, 133002 (2010).
- [25] I. Barth and O. Smirnova, *Phys. Rev. A* **84**, 063415 (2011).
- [26] I. Barth and O. Smirnova, *Phys. Rev. A* **87**, 013433 (2013).
- [27] S. Eckart, K. Fehre, N. Eicke, A. Hartung, J. Rist, D. Trabert, N. Strenger, A. Pier, L. Ph. H. Schmidt, T. Jahnke, M. S. Schöffler, M. Lein, M. Kunitski, and R. Dörner, *Phys. Rev. Lett.* **121**, 163202 (2018).
- [28] D. Trabert, K. Fehre, N. Anders, A. Geyer, S. Grundmann, M. Schöffler, L. Ph. H. Schmidt, T. Jahnke, R. Dörner, M. Kunitski, and S. Eckart, [arXiv:2005.09584](https://arxiv.org/abs/2005.09584).
- [29] S. Eckart, D. Trabert, K. Fehre, A. Geyer, J. Rist, K. Lin, F. Trinter, L. Ph. H. Schmidt, M. Schöffler, T. Jahnke, M. Kunitski, and R. Dörner, [arXiv:2005.04148](https://arxiv.org/abs/2005.04148).
- [30] G. L. Yudin and M. Y. Ivanov, *Phys. Rev. A* **64**, 013409 (2001).
- [31] L. Torlina, F. Morales, J. Kaushal, I. Ivanov, A. Kheifets, A. Zielinski, A. Scrinzi, H. G. Muller, S. Sukiasyan, M. Ivanov, and S. Olga, *Nat. Phys.* **11**, 503 (2015).
- [32] A. W. Bray, S. Eckart, and A. S. Kheifets, *Phys. Rev. Lett.* **121**, 123201 (2018).
- [33] M. Kunitski, N. Eicke, P. Huber, J. Köhler, S. Zeller, J. Voigtsberger, N. Schlott, K. Henrichs, H. Sann, F. Trinter, L. Ph. H. Schmidt, A. Kalinin, M. S. Schöffler, T. Jahnke, M. Lein, and R. Dörner, *Nat. Commun.* **10**, 1 (2019).
- [34] L. Fechner, N. Camus, J. Ullrich, T. Pfeifer, and R. Moshhammer, *Phys. Rev. Lett.* **112**, 213001 (2014).
- [35] M. Meckel, D. Comtois, D. Zeidler, A. Staudte, D. Pavičić, H. C. Bandulet, H. Pépin, J. C. Kieffer, R. Dörner, D. M. Villeneuve, and P. B. Corkum, *Science* **320**, 1478 (2008).
- [36] S. Eckart, M. Kunitski, M. Richter, A. Hartung, J. Rist, F. Trinter, K. Fehre, N. Schlott, K. Henrichs, L. Ph. H. Schmidt, T. Jahnke, M. Schöffler, K. Liu, I. Barth, J. Kaushal, F. Morales, M. Ivanov, O. Smirnova, and R. Dörner, *Nat. Phys.* **14**, 701 (2018).
- [37] J. Vos, L. Cattaneo, S. Patchkovskii, T. Zimmermann, C. Cirelli, M. Lucchini, A. Kheifets, A. S. Landsman, and U. Keller, *Science* **360**, 1326 (2018).
- [38] P. M. Paul, E. S. Toma, P. Breger, G. Mullot, F. Augé, P. Balcou, H. G. Muller, and P. Agostini, *Science* **292**, 1689 (2001).
- [39] H. Muller, *Appl. Phys. B* **74**, s17 (2002).
- [40] C. A. A. de Carvalho and H. M. Nussenzweig, *Phys. Rep.* **364**, 83 (2002).
- [41] I. A. Ivanov and A. S. Kheifets, *Phys. Rev. A* **87**, 033407 (2013).
- [42] C. Cirelli, M. Sabbar, S. Heuser, R. Boge, M. Lucchini, L. Gallmann, and U. Keller, *IEEE J. Sel. Top. Quantum Electron.* **21**, 1 (2015).
- [43] The tunneling probability for the SCTS model is assumed to be $R(\vec{p}_{i,3D}) = \exp(-\frac{|\vec{p}_{i,3D} - \vec{p}_{0,3D}|^2}{2\sigma^2})$, which is in full analogy to Fig. 6(b). The initial momentum at the tunnel exit is represented by $\vec{p}_{i,3D} = \begin{pmatrix} p_{0x} \\ p_{0\perp} \\ p_{0\parallel} \end{pmatrix}$. Here, $\vec{p}_{i,3D}$ is defined using a reference frame that is aligned along the direction of the electric field, $\vec{E}(t_0)$, at the time the electron is released, t_0 . Accordingly, p_{0x} points along the light propagation direction and $p_{0\parallel}$ [$p_{0\perp}$] points along the direction that is parallel (perpendicular) to $\vec{E}(t_0)$. The alignment of the direction that belongs to $p_{0\perp}$ is chosen

such that an increase in the value of $p_{0\perp}$ leads to an increased absolute value of the final electron momentum (as for the HASE model, see discussion of Eq. 2). Here, we choose $\sigma = 0.2$ a.u., $p_{0\parallel} = 0$ a.u. and $\vec{p}_{0,3D} = \begin{pmatrix} 0 \\ 0.2 \\ 0 \end{pmatrix}$ in full analogy to the HASE

model. It should be noted, that due to the choice of $R(\vec{p}_{i,3D})$, the tunneling probability, does not depend on the absolute value of the electric field, which is a difference compared to the original SCTS model (see Eq. 9 from Ref. [19]).

[44] S. G. Eckart, Ph.D. thesis, Goethe University Frankfurt, 2019.