

Realization of epitaxial thin films of the superconductor K-doped BaFe₂As₂

Dongyi Qin,¹ Kazumasa Iida^{2,*}, Takafumi Hatano,² Hikaru Saito,^{3,4} Yiming Ma,⁴ Chao Wang,⁵ Satoshi Hata,^{4,5} Michio Naito,¹ and Akiyasu Yamamoto¹

¹Department of Applied Physics, Tokyo University of Agriculture and Technology, Koganei, Tokyo 184-8588, Japan

²Department of Materials Physics, Nagoya University, Chikusa-ku, Nagoya 464-8603, Japan

³Institute for Materials Chemistry and Engineering, Kyushu University, Kasuga, Fukuoka 816-8580, Japan

⁴Interdisciplinary Graduate School of Engineering Sciences, Kyushu University, Kasuga, Fukuoka 816-8580, Japan

⁵The Ultramicroscopy Research Center, Kyushu University, Nishi-ku, Fukuoka 819-0395, Japan



(Received 29 September 2020; accepted 3 December 2020; published 5 January 2021)

The iron-based superconductor Ba_{1-x}K_xFe₂As₂ is emerging as a key material for high magnetic field applications owing to the recent developments in superconducting wires and bulk permanent magnets. Epitaxial thin films play important roles in investigating and artificially tuning physical properties; nevertheless, the synthesis of Ba_{1-x}K_xFe₂As₂ epitaxial thin films remained challenging because of the high volatility of K. Herein, we report the successful growth of epitaxial Ba_{1-x}K_xFe₂As₂ thin films by molecular-beam epitaxy with employing a combination of fluoride substrates (CaF₂, SrF₂, and BaF₂) and a low growth temperature (350–420 °C). Our epitaxial thin film grown on CaF₂ showed sharp superconducting transition at an onset critical temperature of 36 K, slightly lower than bulk crystals by ~2 K due presumably to the strain effect arising from the lattice and thermal expansion mismatch. Critical current density (J_c) determined by the magnetization hysteresis loop is as high as 2.2 MA/cm² at 4 K under self-field. In-field J_c characteristics of the film are superior to the bulk crystals. The realization of epitaxial thin films opens opportunities for tuning superconducting properties by epitaxial strain and revealing intrinsic grain boundary transport of Ba_{1-x}K_xFe₂As₂.

DOI: [10.1103/PhysRevMaterials.5.014801](https://doi.org/10.1103/PhysRevMaterials.5.014801)

I. INTRODUCTION

Iron-based superconductors (IBSCs) have been regarded as new candidate materials for superconducting applications [1]. There are several families including: $LnFeAsO$ ($Ln=1111$, Ln = lanthanoid elements) with the highest superconducting transition temperature (T_c) of 55 K [2], $AeFe_2As_2$ ($Ae=122$, Ae = alkaline-earth elements) with the highest T_c of 38 K [3], and $FeCh$ ($FeCh=11$, Ch = chalcogens) with $T_c \sim 15$ K [4] but reaching above 40 K in thin films [5–9]. Among these materials, Ba-122 is one of the most promising materials for high magnetic field applications because of its high upper critical field (H_{c2}) with small anisotropy [10–12], large critical current density (J_c) [13–16], and large critical grain-boundary angle [17–19]. In fact, powder-in-tube processed K-doped $Ae=122$ wires and tapes [20,21], and K-doped Ba-122 bulk magnets [22] have been fabricated as proof-of-principle studies for high-field applications, although the information on the J_c transparency across the grain boundary for K-doped $Ae=122$ is not clear yet. This is a sharp contrast to other IBSCs, where high-quality films have been grown on a variety of single- and bicrystalline, and technical substrates and, hence, fundamental and application-related research has been developed [23–25].

The difficulty of growing epitaxial $Ae_{1-x}K_xFe_2As_2$ thin films is mainly due to the volatility of K. To overcome this problem, several attempts have been reported to date. Lee *et al.* reported a postannealing technique [26,27], where precursor thin films of BaFe₂As₂ were postannealed in a quartz tube with K metal. The resultant films are c -axis oriented and show a superconducting transition with $T_c^{on} - T_c^{end} = 40.0-37.5$ K; however, they were not epitaxially grown. More recently, Hatakeyama *et al.* and Hiramatsu *et al.* have developed a solid-phase epitaxy technique to prepare epitaxial thin films of the end member, KFe₂As₂ [28,29]. To produce KFe₂As₂ films, it is essential to suppress reevaporation of K at high annealing temperatures, e.g., as high as 1000 °C.

Previously we have reported the importance of the low-temperature growth for incorporating volatile K into Sr_{1-x}K_xFe₂As₂ and Ba_{1-x}K_xFe₂As₂ films [30–33]. Films grown on bare oxide substrates were polycrystalline and c -axis oriented films were realized only with (K,As)-buffered substrates. These c -axis oriented films were not in-plane aligned but the highest T_c of 38.3 K was attained. Hence, a proper substrate should be explored for realizing the epitaxial growth of K-doped Ba-122. Fluoride substrates (CaF₂, SrF₂, and BaF₂) are typically superior to oxide substrates for thin-film growth of IBSCs [34–38]. Additionally, even for a wide range of the growth temperature (280–500 °C), epitaxially grown Fe(Se,Te) thin films are realized [34,39]. Here we employ the combination of a low-temperature growth, up to 420 °C, and fluoride substrates that yield truly epitaxial films of Ba_{1-x}K_xFe₂As₂ with a high superconducting transition ($T_c^{on} \sim 36$ K), a sharp transition width of 1.5 K, and a high self-field J_c of 2.2 MA/cm² at 4 K.

*iida@mp.pse.nagoya-u.ac.jp

Published by the American Physical Society under the terms of the Creative Commons Attribution 4.0 International license. Further distribution of this work must maintain attribution to the author(s) and the published article's title, journal citation, and DOI.

II. EXPERIMENT

The $\text{Ba}_{1-x}\text{K}_x\text{Fe}_2\text{As}_2$ thin films were grown in a custom-designed molecular-beam epitaxy (MBE) chamber (base pressure of $\sim 1 \times 10^{-9}$ Torr). The details of our film growth approach have been presented in our previous report [23]. Briefly, all elements (Ba, Fe, and As) except for K were supplied from pure metal sources by resistive heating. Elemental K was supplied from an In-K alloy (In_8K_5). We used electron impact emission spectrometry (EIES) [23] and atomic absorption spectrometry (AAS) [23] for the real-time rate monitoring of various elements: EIES for Ba and Fe, and AAS for K. The K-doping level in $\text{Ba}_{1-x}\text{K}_x\text{Fe}_2\text{As}_2$ films was aimed at $x = 0.4$. The amount of supplied K flux was substantially (2–3 times) higher than the nominally required amount to compensate for K reevaporation. The As flux was optimized by adjusting the cell temperature. The growth rate was ~ 1.5 Å/s and the deposition time of 10 min yielded $\text{Ba}_{1-x}\text{K}_x\text{Fe}_2\text{As}_2$ thin films ~ 1000 Å thick. The optimum growth temperatures were 700–720 °C for parent BaFe_2As_2 and 350–420 °C for $\text{Ba}_{1-x}\text{K}_x\text{Fe}_2\text{As}_2$. Fluoride substrates, $\text{CaF}_2(001)$, $\text{SrF}_2(001)$, and $\text{BaF}_2(001)$, were used in this study. MgO(001) substrate was used as a reference. K-containing films, especially grown on oxide substrates, quickly degraded in air; therefore, we coated films with a polystyrene resin (commercially called “Q-dope”) diluted by toluene as a capping layer immediately after removing the films from the MBE chamber.

The films were characterized by *in situ* reflection high-energy electron diffraction (RHEED), x-ray diffraction (XRD) using both two-circle ($\theta, 2\theta$) and four-circle ($2\theta, \omega, \phi, \chi$) diffractometers with Cu- K_α radiation, transmission electron microscopy (TEM), and resistivity (ρ - T) measurements. Magnetic measurements were performed using a superconducting quantum interference device magnetometer to determine T_c and J_c . J_c values were determined by the Bean critical state model.

III. RESULTS AND DISCUSSION

A. Crystal structure

Figure 1 shows the XRD patterns and RHEED images of $\text{Ba}_{1-x}\text{K}_x\text{Fe}_2\text{As}_2$ films. In Fig. 1(a), the XRD patterns of $\text{Ba}_{1-x}\text{K}_x\text{Fe}_2\text{As}_2$ films grown on CaF_2 and MgO are compared. The film grown on MgO(001) does not show any appreciable diffraction peaks outside the (002) MgO peak, which indicates that the film is polycrystalline. On the other hand, the film grown on CaF_2 is essentially single phased and *c*-axis oriented with minor iron arsenide impurity peaks. Compared to $\text{Ba}_{1-x}\text{K}_x\text{Fe}_2\text{As}_2$ films, pristine BaFe_2As_2 films (single phased and *c*-axis oriented) were easily grown on either MgO or CaF_2 . Figure 1(b) shows the result of x-ray in-plane measurements, i.e., the ϕ scan of the (103) reflection peak of the $\text{Ba}_{0.6}\text{K}_{0.4}\text{Fe}_2\text{As}_2$ film on CaF_2 . The fourfold symmetry observed in the ϕ scan with a small full width at half maximum value $\Delta\phi \sim 1.39^\circ$ confirms that the film is in-plane aligned and single crystalline. Similar results were obtained in the films grown on SrF_2 and BaF_2 , suggesting that the use of fluoride substrates is critical for obtaining single-crystalline $\text{Ba}_{1-x}\text{K}_x\text{Fe}_2\text{As}_2$ films (see Supplemental Material, Fig. S1 [40]). The lattice parameters of the film on CaF_2

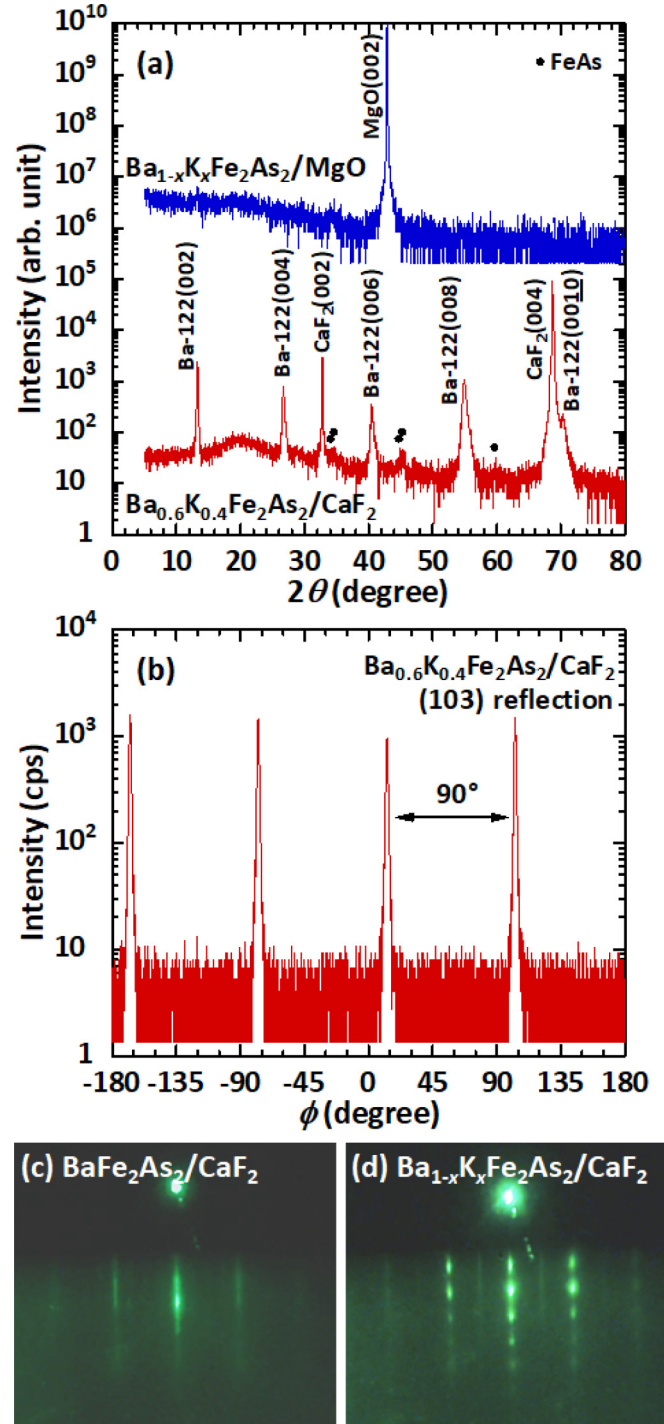


FIG. 1. (a) Comparison of the θ - 2θ XRD patterns of the $\text{Ba}_{1-x}\text{K}_x\text{Fe}_2\text{As}_2$ films on MgO (top) and CaF_2 substrates (bottom). (b) ϕ scan of the (103) reflection of $\text{Ba}_{0.6}\text{K}_{0.4}\text{Fe}_2\text{As}_2$ film on CaF_2 substrate. (c), (d) RHEED patterns of the pristine BaFe_2As_2 (c) and $\text{Ba}_{1-x}\text{K}_x\text{Fe}_2\text{As}_2$ (d) films on CaF_2 substrates. The RHEED images were obtained after the growth with an incident electron beam parallel to the substrate [110] azimuth.

are $a_f \sim 3.889$ Å and $c_f \sim 13.380$ Å. The literature [16,41] shows that the lattice parameters of bulk samples follow $a_b = 3.96 - 0.12x$ (Å) and $c_b = 13.00 + 0.84x$ (Å). Estimating on the basis of these bulk data, $\text{Ba}_{1-x}\text{K}_x\text{Fe}_2\text{As}_2$ films with

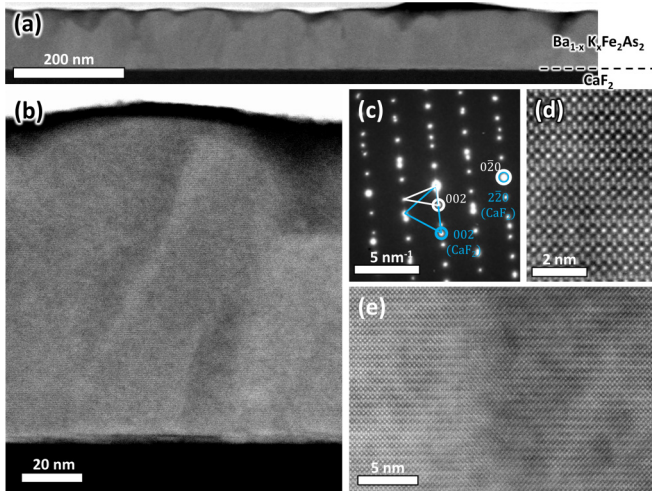


FIG. 2. Structural characterization by ADF-STEM imaging (at several different magnifications) and SAED. (a), (b) Low- and medium-resolution ADF-STEM images. (c) Diffraction pattern obtained from an area of a 100-nm size over the $\text{Ba}_{0.6}\text{K}_{0.4}\text{Fe}_2\text{As}_2/\text{CaF}_2$ interface. (d), (e) High-resolution ADF-STEM images obtained in a grain and at a grain boundary. Note that the top layer with the brightest contrast in (a) and (b) is a Pt layer deposited for protection against beam damage during the fabrication process with a focused ion beam.

$x = 0.40$ should have $a = 3.91 \text{ \AA}$ and $c = 13.33 \text{ \AA}$. The actual film has shorter a_f and longer c_f compared to this estimation. The difference arises from the thermal expansion mismatch and/or the in-plane lattice mismatch between the Ca-Ca distance (3.863 \AA) of CaF_2 and the in-plane lattice constant (3.91 \AA) of $\text{Ba}_{0.6}\text{K}_{0.4}\text{Fe}_2\text{As}_2$. The in-plane compressive strain leads to the out-of-plane tensile strain, which leads to a stretch in c_f arising from the Poisson effect.

As seen in Figs. 1(c) and 1(d), the RHEED patterns of pristine BaFe_2As_2 and $\text{Ba}_{1-x}\text{K}_x\text{Fe}_2\text{As}_2$ grown on CaF_2 demonstrate that both films are single crystalline, which agrees with the XRD results. There is a small difference between the two samples. Pristine BaFe_2As_2 shows streaks whereas $\text{Ba}_{1-x}\text{K}_x\text{Fe}_2\text{As}_2$ shows streaky spots, which indicates that transmission diffraction is partly involved. Specifically, the surface of $\text{Ba}_{1-x}\text{K}_x\text{Fe}_2\text{As}_2$ is less smooth than that of pristine BaFe_2As_2 . However, immediately after starting the growth of $\text{Ba}_{1-x}\text{K}_x\text{Fe}_2\text{As}_2$, the diffraction pattern in the RHEED image starts with streaks. This observation suggests smooth initial growth of $\text{Ba}_{1-x}\text{K}_x\text{Fe}_2\text{As}_2$ on CaF_2 , which indicates a good physical and chemical matching between the films and the substrate.

B. TEM analysis

Figure 2(a) shows the cross-sectional image of a $\text{Ba}_{0.6}\text{K}_{0.4}\text{Fe}_2\text{As}_2$ film grown on a CaF_2 substrate obtained by annular dark-field (ADF) scanning transmission electron microscopy (STEM). The cross-sectional sample was fabricated by a focused ion beam. The incident direction of the electron beam is parallel to the $[110]$ direction of the CaF_2 substrate. The image contrast slightly varies in the $\text{Ba}_{0.6}\text{K}_{0.4}\text{Fe}_2\text{As}_2$ layer mainly in the in-plane direction, which indicates that the formation of columnar grains occurs perpendicular to the

substrate surface. This is more clearly seen in a magnified image shown in Fig. 2(b), where several boundaries lie approximately perpendicular to the substrate surface at a several tens of nanometers interval. The columnar growth observed in TEM agrees with the RHEED image in Fig. 1(d). Of note, a lattice fringe is recognized in the entire area of the $\text{Ba}_{0.6}\text{K}_{0.4}\text{Fe}_2\text{As}_2$ layer in Fig. 2(b), which corresponds to the (001) interplanar spacing of $\text{Ba}_{0.6}\text{K}_{0.4}\text{Fe}_2\text{As}_2$. This means that the $\text{Ba}_{0.6}\text{K}_{0.4}\text{Fe}_2\text{As}_2$ film has strong (001) texture and almost no defects such as stacking fault or crack. Figure 2(c) shows a selected area electron diffraction (SAED) obtained from an area of 100-nm size over the $\text{Ba}_{0.6}\text{K}_{0.4}\text{Fe}_2\text{As}_2/\text{CaF}_2$ interface, which indicates a clear epitaxial relationship, i.e., the (001) planes of $\text{Ba}_{0.6}\text{K}_{0.4}\text{Fe}_2\text{As}_2$ are parallel to the (001) planes of CaF_2 and the $[100]$ direction of $\text{Ba}_{0.6}\text{K}_{0.4}\text{Fe}_2\text{As}_2$ is parallel to the $[110]$ direction of CaF_2 . An atomic-resolution image is shown in Fig. 2(d), where each atomic column in the $[100]$ direction can be recognized [42,43]. This column arrangement is blurred at grain boundaries owing to misorientation as shown in Fig. 2(e). However, a similar atomic-column arrangement is still recognized, meaning that the misorientation is not so large. This small misorientation is consistent with the XRD results shown in Fig. 1(b). Energy-dispersive x-ray spectroscopy (EDX) mapping at the ADF-STEM field of view revealed that the distribution of K in the $\text{Ba}_{1-x}\text{K}_x\text{Fe}_2\text{As}_2$ film is nearly homogeneous with $x \sim 0.40 \pm 0.07$ (see Supplemental Material, Fig. S2 [40]).

C. Superconducting properties

Figure 3(a) demonstrates the superconducting transition observed by in-plane resistivity measurements for a $\text{Ba}_{0.6}\text{K}_{0.4}\text{Fe}_2\text{As}_2$ film on CaF_2 , which shows a sharp transition with T_c^{on} of 36.4 K. Here T_c^{on} is defined as the temperature at which the resistivity becomes 90% of the normal state. The T_c^{on} values of $\text{Ba}_{1-x}\text{K}_x\text{Fe}_2\text{As}_2$ films on fluoride substrates are slightly ($\sim 2 \text{ K}$) lower than bulk T_c of 38 K [3]. The slightly lower T_c can be considered as a result of the in-plane compressive strain. The in-plane lattice mismatch between CaF_2 and $\text{Ba}_{1-x}\text{K}_x\text{Fe}_2\text{As}_2$ increases by decreasing temperature from the growth temperature (673 K) to the measurement temperatures (i.e., $4 \leq T \leq 40 \text{ K}$). The in-plane strain is estimated to be around 2.4% at 40 K (see Supplemental Material, Fig. S3 [40]). It is reported that the in-plane compressive strain gives a negative impact on T_c for $\text{Ba}_{1-x}\text{K}_x\text{Fe}_2\text{As}_2$ ($x \geq 0.28$) [44], which also supports our results of slightly lower T_c on CaF_2 substrate. The inset of Fig. 3(a) compares the temperature dependences of resistivity for the epitaxial film on CaF_2 and the polycrystalline film on MgO . The residual resistance ratio (RRR) is fairly high (~ 7) for the epitaxial film of $\text{Ba}_{0.6}\text{K}_{0.4}\text{Fe}_2\text{As}_2$ on CaF_2 . This trend was also confirmed for the films on other fluoride substrates (see Supplemental Material, Fig. S1 [40]). However, the polycrystalline film on MgO shows a lower RRR value (2.7) with a broad superconducting transition, although a T_c^{on} of is 34.5 K reasonably high. Figure 3(b) shows the temperature dependence of magnetic susceptibility ($\chi - T$) for the zero-field-cooled (ZFC) and field-cooled (FC) $\text{Ba}_{0.6}\text{K}_{0.4}\text{Fe}_2\text{As}_2$ film on CaF_2 . The data were normalized to their absolute value at 4 K. The film shows a clear diamagnetic signal below 33.5 K, which approximately agrees with the temperature (T_c^{zero}), at which the resistivity

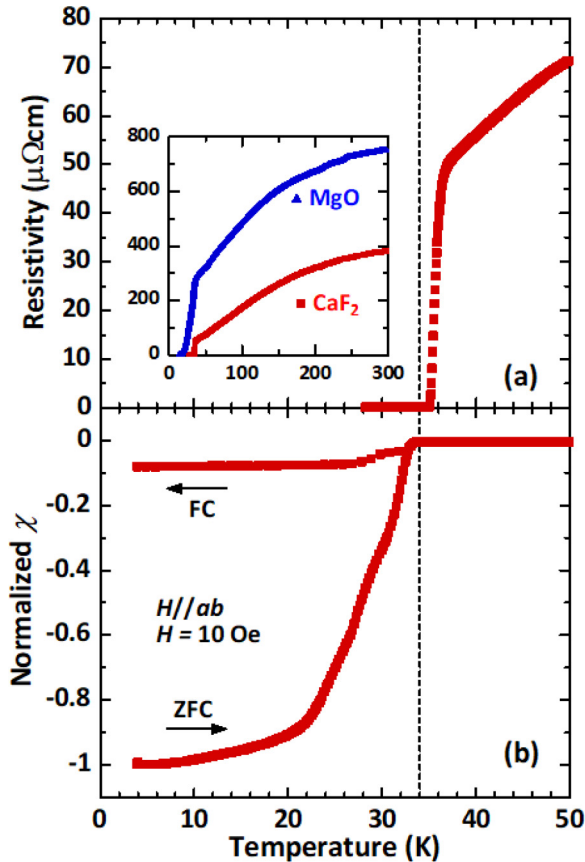


FIG. 3. Superconducting transitions measured by resistivity and susceptibility for $\text{Ba}_{0.6}\text{K}_{0.4}\text{Fe}_2\text{As}_2$ film on CaF_2 substrate. (a) Temperature dependence of resistivity near T_c . The inset shows comparison of the temperature dependences of resistivity for $\text{Ba}_{0.6}\text{K}_{0.4}\text{Fe}_2\text{As}_2$ films on CaF_2 and MgO substrates. (b) Temperature dependence of magnetic susceptibility of the $\text{Ba}_{0.6}\text{K}_{0.4}\text{Fe}_2\text{As}_2$ film on CaF_2 substrate for the ZFC and FC processes. The magnetic field was applied perpendicular to the crystallographic c -axis.

becomes zero in transport measurements. Although the χ - T curve for ZFC of this film shows a broad transition, most of our films grown by the similar condition exhibited a T_c of 33 K with a sharp transition (see Supplemental Material, Fig. S4 [40]). Hence, the lower T_c of our films than that of single crystals is not associated with the extrinsic factors such as chemical homogeneity and crystalline imperfection but rather the strain effect discussed above.

Figure 4 shows the magnetic field dependence of J_c for the $\text{Ba}_{0.6}\text{K}_{0.4}\text{Fe}_2\text{As}_2$ film on CaF_2 . The self-field J_c at 4 K is as high as 2.2 MA/cm^2 and decreases monotonously with the increase in temperature. However, the value is still above 10^5 A/cm^2 even at 28 K. Of note, the level of J_c for our thin films is superior to that of a single crystal [16]. The J_c shows a rather weak dependence on the magnetic field, indicating that the c -axis correlated pinning centers are present in the film. As stated above, grain boundaries lie approximately perpendicular to the substrate surface at a several tens of nanometers interval, which may work as pinning centers. The J_c values from the preliminary transport measurements were confirmed to be comparable to those from the magnetization measurements, indicating that supercurrent

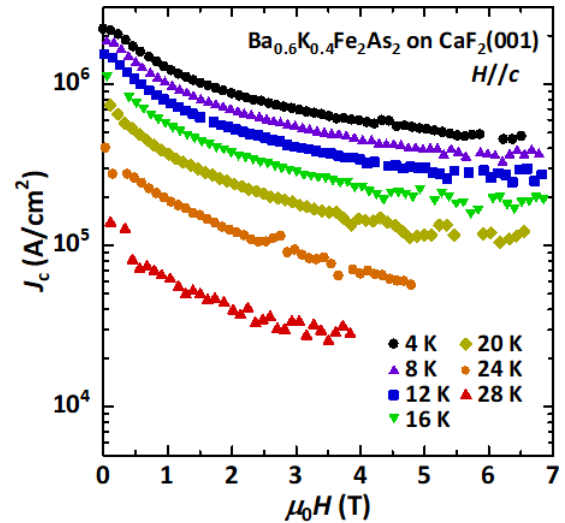


FIG. 4. Magnetic field dependence of J_c for the $\text{Ba}_{0.6}\text{K}_{0.4}\text{Fe}_2\text{As}_2$ film on CaF_2 substrate. The magnetic field was applied parallel to the crystallographic c -axis.

flows macroscopically in the film without being interrupted by dislocations or high-angle grain boundaries, which also supports that the sample is an epitaxial film. The detailed transport J_c measurements of $\text{Ba}_{1-x}\text{K}_x\text{Fe}_2\text{As}_2$ thin films would be the direction of our next study.

Our results expand the possibilities for wide-reaching research. Firstly, the uniaxial pressure dependence of $\text{Ba}_{1-x}\text{K}_x\text{Fe}_2\text{As}_2$ can be investigated, since in-plane strain can be induced by using the lattice or thermal expansion mismatch between films and fluoride substrates, e.g., Refs. [45,46]. Secondly and most importantly, single-crystalline-like $\text{Ba}_{1-x}\text{K}_x\text{Fe}_2\text{As}_2$ thin films are realized for a wide range of substrates on which fluoride is epitaxially grown. This opens up avenues to grow $\text{Ba}_{1-x}\text{K}_x\text{Fe}_2\text{As}_2$ on fluoride-buffered technical and bicrystalline substrates.

IV. CONCLUSION

To conclude, we demonstrate the epitaxial growth of $\text{Ba}_{1-x}\text{K}_x\text{Fe}_2\text{As}_2$ films on fluoride substrates such as CaF_2 , SrF_2 , and BaF_2 . Both of the XRD and TEM analyses indicate that the films are highly textured and single-crystalline-like: the films consist of columnar nanograins showing small misorientation angles in the a - b plane of $\text{Ba}_{1-x}\text{K}_x\text{Fe}_2\text{As}_2$ at nanograin interfaces. The superconducting transition is as sharp as 1.5 K, although the T_c^{on} of 36.4 K of $\text{Ba}_{0.6}\text{K}_{0.4}\text{Fe}_2\text{As}_2$ on CaF_2 is slightly (~ 2 K) lower than the bulk T_c . This T_c suppression is due presumably to the strain effect. The self-field J_c at 4 K is as high as 2.2 MA/cm^2 and decreases monotonously with an increase in temperature. It should be noted that the level of J_c for our thin films is superior to that of a single crystal. J_c shows a rather weak dependence on magnetic fields. The successful realization of epitaxial thin films opens the opportunities to investigate the transport properties for evaluating the application potentials.

The data that support the findings of this study are available within the article and its Supplemental Material [40].

ACKNOWLEDGMENTS

The authors thank S. Takano (TUAT) for his early contribution to MBE growth of $\text{Ba}_{1-x}\text{K}_x\text{Fe}_2\text{As}_2$ on fluoride substrates. This work was partly supported by JST CREST (Grant No.

JPMJCR18J4) and Advanced Characterization Platform of the Nanotechnology Platform Japan (Grants No. JPMXP09-A-19-KU-1003 and No. 1004) sponsored by the Ministry of Education, Culture, Sports, Science and Technology (MEXT), Japan.

- [1] H. Hosono, A. Yamamoto, H. Hiramatsu, and Y. Ma, *Mater. Today* **21**, 278 (2019).
- [2] Y. Kamihara, T. Watanabe, M. Hirano, and H. Hosono, *J. Am. Chem. Soc.* **130**, 3296 (2008).
- [3] M. Rotter, M. Tegel, and D. Johrendt, *Phys. Rev. Lett.* **101**, 107006 (2008).
- [4] F. C. Hsu, J. Y. Luo, K. W. Yeh, T. K. Chen, T. W. Huang, P. M. Wu, Y. C. Lee, Y. L. Huang, Y. Y. Chu, D. C. Yan, and M. K. Wu, *Proc. Natl. Acad. Sci.* **105**, 14262 (2008).
- [5] S. He, J. He, W. Zhang, L. Zhao, D. Liu, X. Liu, D. Mou, Y.-B. Ou, Q.-Y. Wang, Z. Li, L. Wang, Y. Peng, Y. Liu, C. Chen, L. Yu, G. Liu, X. Dong, J. Zhang, C. Chen, Z. Xu, X. Chen, X. Ma, Q. Xue, and X. J. Zhou, *Nat. Mater.* **12**, 605 (2013).
- [6] J. Shiogai, Y. Ito, T. Mitsuhashi, T. Nojima, and A. Tsukazaki, *Nat. Phys.* **12**, 42 (2016).
- [7] K. Hanzawa, H. Sato, H. Hiramatsu, T. Kamiya, and H. Hosono, *Proc. Natl. Acad. Sci.* **113**, 3986 (2016).
- [8] S. Kouno, Y. Sato, Y. Katayama, A. Ichinose, D. Asami, F. Nabeshima, Y. Imai, A. Maeda, and K. Ueno, *Sci. Rep.* **8**, 14731 (2018).
- [9] A. K. Pedersen, S. Ichinokura, T. Tanaka, R. Shimizu, T. Hitosugi, and T. Hirahara, *Phys. Rev. Lett.* **124**, 227002 (2020).
- [10] M. M. Altarawneh, K. Collar, C. H. Mielke, N. Ni, S. L. Bud'ko, and P. C. Canfield, *Phys. Rev. B* **78**, 220505(R) (2008).
- [11] A. Yamamoto, J. Jaroszynski, C. Tarantini, L. Balicas, J. Jiang, A. Gurevich, D. C. Larbalestier, R. Jin, A. S. Sefat, M. A. McGuire, B. C. Sales, D. K. Christen, and D. Mandrus, *Appl. Phys. Lett.* **94**, 062511 (2009).
- [12] C. Tarantini, A. Gurevich, J. Jaroszynski, F. Balakirev, E. Bellingeri, I. Pallecchi, C. Ferdeghini, B. Shen, H. H. Wen, and D. C. Larbalestier, *Phys. Rev. B* **84**, 184522 (2011).
- [13] S. Lee, J. Jiang, Y. Zhang, C. W. Bark, J. D. Weiss, C. Tarantini, C. T. Nelson, H. W. Jang, C. M. Folkman, S. H. Baek, A. Polyanskii, D. Abrahimov, A. Yamamoto, J. W. Park, X. Q. Pan, E. E. Hellstrom, D. C. Larbalestier, and C. B. Eom, *Nat. Mater.* **9**, 397 (2010).
- [14] L. Fang, Y. Jia, C. Chaparro, G. Sheet, H. Claus, M. A. Kirk, A. E. Koshelev, U. Welp, G. W. Crabtree, W. K. Kwok, S. Zhu, H. F. Hu, J. M. Zuo, H. H. Wen, and B. Shen, *Appl. Phys. Lett.* **101**, 012601 (2012).
- [15] H. Sato, H. Hiramatsu, T. Kamiya, and H. Hosono, *Appl. Phys. Lett.* **104**, 182603 (2014).
- [16] S. Ishida, D. Song, H. Ogino, A. Iyo, H. Eisaki, M. Nakajima, J.-i. Shimoyama, and M. Eisterer, *Phys. Rev. B* **95**, 014517 (2017).
- [17] S. Lee, J. Jiang, J. D. Weiss, C. M. Folkman, C. W. Bark, C. Tarantini, A. Xu, D. Abrahimov, A. Polyanskii, C. T. Nelson, Y. Zhang, S. H. Baek, H. W. Jang, A. Yamamoto, F. Kametani, X. Q. Pan, E. E. Hellstrom, A. Gurevich, C. B. Eom, and D. C. Larbalestier, *Appl. Phys. Lett.* **95**, 212505 (2009).
- [18] T. Katase, Y. Ishimaru, A. Tsukamoto, H. Hiramatsu, T. Kamiya, K. Tanabe, and H. Hosono, *Nat. Commun.* **2**, 409 (2011).
- [19] A. Sakagami, T. Kawaguchi, M. Tabuchi, T. Ujihara, Y. Takeda, and H. Ikuta, *Physica C* **494**, 181 (2013).
- [20] K. Togano, A. Matsumoto, and H. Kumakura, *Appl. Phys. Express* **4**, 043101 (2011).
- [21] Z. Gao, L. Wang, Y. Cao, Y. Qi, C. Wang, L. Wang, D. Wang, and Y. Ma, *Appl. Phys. Lett.* **99**, 242506 (2011).
- [22] J. D. Weiss, A. Yamamoto, A. A. Polyanskii, R. B. Richardson, D. C. Larbalestier, and E. E. Hellstrom, *Supercond. Sci. Technol.* **28**, 112001 (2015).
- [23] M. Sakoda, K. Iida, and M. Naito, *Supercond. Sci. Technol.* **31**, 093001 (2018).
- [24] K. Iida, J. Hänisch, and C. Tarantini, *Appl. Phys. Rev.* **5**, 031304 (2018).
- [25] J. Hänisch, K. Iida, R. Hühne, and C. Tarantini, *Supercond. Sci. Technol.* **32**, 093001 (2019).
- [26] N. H. Lee, S. G. Jung, D. H. Kim, and W. N. Kang, *Appl. Phys. Lett.* **96**, 202505 (2010).
- [27] N. H. Lee, S. G. Jung, D. H. Kim, and W. N. Kang, *Prog. Supercond. Cryog.* **16**, 4 (2014).
- [28] T. Hatakeyama, H. Sato, H. Hiramatsu, T. Kamiya, and H. Hosono, *Appl. Phys. Express* **9**, 055505 (2016).
- [29] H. Hiramatsu, S. Matsuda, H. Sato, T. Kamiya, and H. Hosono, *ACS Appl. Mater. Interfaces* **6**, 14293 (2014).
- [30] S. Takeda, S. Ueda, T. Yamagishi, S. Agatsuma, S. Takano, A. Mitsuda, and M. Naito, *Appl. Phys. Express* **3**, 093101 (2010).
- [31] T. Yamagishi, S. Ueda, S. Takeda, S. Takano, A. Mitsuda, and M. Naito, *Physica C* **471**, 1177 (2011).
- [32] S. Ueda, T. Yamagishi, S. Takeda, S. Agatsuma, S. Takano, A. Mitsuda, and M. Naito, *Physica C* **471**, 1167 (2011).
- [33] S. Ueda, S. Takeda, S. Takano, A. Mitsuda, and M. Naito, *Jpn. J. Appl. Phys.* **51**, 010103 (2012).
- [34] I. Tsukada, M. Hanawa, T. Akiike, F. Nabeshima, Y. Imai, A. Ichinose, S. Komiya, T. Hikage, T. Kawaguchi, H. Ikuta, and A. Maeda, *Appl. Phys. Express* **4**, 053101 (2011).
- [35] H. Uemura, T. Kawaguchi, T. Ohno, M. Tabuchi, T. Ujihara, Y. Takeda, and H. Ikuta, *Solid State Commun.* **152**, 735 (2012).
- [36] S. Ueda, S. Takeda, S. Takano, A. Yamamoto, and M. Naito, *Appl. Phys. Lett.* **99**, 232505 (2011).
- [37] F. Kurth, E. Reich, J. Hänisch, A. Ichinose, I. Tsukada, R. Hühne, S. Trommler, J. Engelmann, L. Schultz, B. Holzapfel, and K. Iida, *Appl. Phys. Lett.* **102**, 142601 (2013).
- [38] A. Ichinose, I. Tsukada, F. Nabeshima, Y. Imai, A. Maeda, F. Kurth, B. Holzapfel, K. Iida, S. Ueda, and M. Naito, *Appl. Phys. Lett.* **104**, 122603 (2014).
- [39] S. Seo, J.-H. Kang, M. Oh, Il-S. Jeong, J. Jiang, G. Gu, J.-W. Lee, J. Lee, H. Noh, M. Liu, P. Gao, E. E. Hellstrom, J.-H. Lee, Y. Jo, C.-B. Eom, and S. Lee, *Sci. Rep.* **7**, 9994 (2017).

- [40] See Supplemental Material at <http://link.aps.org/supplemental/10.1103/PhysRevMaterials.5.014801> for x-ray diffraction and temperature dependence of resistance data for $\text{Ba}_{1-x}\text{K}_x\text{Fe}_2\text{As}_2$ films grown on various fluoride substrates (CaF_2 , SrF_2 , and BaF_2), chemical composition analysis by TEM-EDX, temperature dependence of the in-plane lattice parameter and in-plane strain, and superconducting transition temperature of several $\text{Ba}_{1-x}\text{K}_x\text{Fe}_2\text{As}_2$ thin films on CaF_2 substrates, which includes Refs. [47,48].
- [41] M. Rotter, M. Pangerl, M. Tegel, and D. Johrendt, *Angew. Chem. Int. Ed.* **47**, 7949 (2008).
- [42] P. Gao, Y. Zhang, S. Y. Zhang, S. Lee, J. Weiss, J. R. Jokisaari, E. E. Hellstrom, D. C. Larbalestier, C. B. Eom, and X. Q. Pan, *Phys. Rev. B* **91**, 104525 (2015).
- [43] J. H. Kang, L. Xie, Y. Wang, H. Lee, N. Campbell, J. Jiang, P. J. Ryan, D. J. Keavney, J. W. Lee, T. H. Kim, X. Pan, L. Q. Chen, E. E. Hellstrom, M. S. Rzchowski, Z. K. Liu, and C. B. Eom, *Nano Lett.* **18**, 6347 (2018).
- [44] A. E. Böhmer, F. Hardy, L. Wang, T. Wolf, P. Schweiss, and C. Meingast, *Nat. Commun.* **6**, 7911 (2015).
- [45] K. Iida, V. Grinenko, F. Kurth, A. Ichinose, I. Tsukada, E. Ahrens, A. Pukenas, P. Chekhonin, W. Skrotzki, A. Teresiak, R. Hühne, S. Aswartham, S. Wurmehl, I. Mönch, M. Erbe, J. Hänisch, B. Holzapfel, S.-L. Drechsler, and D. V. Efremov, *Sci. Rep.* **6**, 28390 (2016).
- [46] Q. Y. Lei, M. Gholikhani, D. Y. Yang, W. K. Withanage, A. Rafti, J. Qiu, M. Hambe, E. D. Bauer, F. Ronning, Q. X. Jia, J. D. Weiss, E. E. Hellstrom, X. F. Wang, X. H. Chen, F. Williams, Q. Yang, D. Temple, and X. X. Xi, *Supercond. Sci. Technol.* **27**, 115010 (2014).
- [47] R. B. Roberts and G. K. White, *J. Phys. C: Solid State Phys.* **19**, 7167 (1986).
- [48] M. S. da Luz, J. J. Neumeier, R. K. Bollinger, A. S. Sefat, M. A. McGuire, R. Jin, B. C. Sales, and D. Mandrus, *Phys. Rev. B* **79**, 214505 (2009).