

Ferromagnetic Resonance with Magnetic Phase Selectivity by Means of Resonant Elastic X-Ray Scattering on a Chiral Magnet

S. Pöllath,¹ A. Aqeel,² A. Bauer,² C. Luo,^{3,2} H. Ryll,³ F. Radu,³ C. Pfleiderer,^{2,4}
G. Woltersdorf,⁵ and C. H. Back^{1,2,4,*}

¹*Institut für Experimentelle Physik, Universität Regensburg, D-93040 Regensburg, Germany*

²*Physik-Department, Technische Universität München, D-85748 Garching, Germany*

³*Helmholtz-Zentrum Berlin für Materialien and Energie, D-12489 Berlin, Germany*

⁴*Munich Center for Quantum Science and Technology (MCQST), Schellingstraße 4, D-80799 München, Germany*

⁵*Institut für Physik, Universität Halle-Wittenberg, D-06120 Halle (Saale), Germany*



(Received 24 May 2019; revised manuscript received 24 July 2019; published 14 October 2019)

Cubic chiral magnets, such as Cu_2OSeO_3 , exhibit a variety of noncollinear spin textures, including a trigonal lattice of spin whirls, the so-called skyrmions. Using magnetic resonant elastic x-ray scattering (REXS) on a crystalline Bragg peak and its magnetic satellites while exciting the sample with magnetic fields at gigahertz frequencies, we probe the ferromagnetic resonance (FMR) modes of these spin textures by means of the scattered intensity. Most notably, the three eigenmodes of the skyrmion lattice are detected with large sensitivity. As this novel technique, which we label REXS FMR, is carried out at distinct positions in reciprocal space, it allows us to distinguish contributions originating from different magnetic states, providing information on the precise character, weight, and mode mixing as a prerequisite of tailored excitations for applications.

DOI: 10.1103/PhysRevLett.123.167201

Ferromagnetic resonance (FMR) measurements represent a well-established technique for the study of systems with collinear magnetization [1], allowing us to extract information on the magnetic energy landscape and material-specific parameters such as the effective magnetization, the Landé g factor, or the magnetic damping constant α . In systems with noncollinear spin textures, measurements of resonant microwave excitations exhibit very complex spectra, where the identification of specific modes proves to be prohibitively difficult. However, in view of new technological developments such as antiferromagnetic spintronics and the use of quantum magnetism, the precise identification of specific modes will be of great importance [2].

The cubic chiral magnets MnSi , $\text{Fe}_{1-x}\text{Co}_x\text{Si}$, and Cu_2OSeO_3 represent excellent showcases for the inherent complexity of materials with technological potential. These materials host long-wavelength helimagnetic order including a trigonal lattice of topologically nontrivial spin whirls, the so-called skyrmion lattice [3–7]. Their microwave excitations have been studied by means of coplanar waveguides and cavities [8–12]. In the helimagnetic states, two collective spin-precessional modes, denoted $+q$ and $-q$, are observed. In the skyrmion lattice state, three eigenmodes exist—namely, a clockwise and a counterclockwise gyration mode as well as a breathing mode [13]. The remarkably detailed understanding of the cubic chiral magnet allows us to assign these modes in the experimental spectra by comparing their resonance frequency and spectral weight, as well as the evolution of the latter as

a function of temperature and field, to results of analytic calculations and micromagnetic simulations solving the Landau-Lifshitz-Gilbert equation taking into account dipolar interactions [12]. Such an in-depth understanding, however, may not be available when investigating novel materials [14–16] or when phenomena such as metastable states, glassy textures, phase coexistence, topological transitions, and pronounced history dependencies play a role [17–25].

In this Letter, we present a novel technique, called REXS FMR, which combines the excitation of collective modes by means of a coplanar waveguide with the detection by means of the scattered intensity in magnetic resonant elastic x-ray scattering (REXS). The intensity of a crystalline Bragg peak or magnetic satellites may be studied, permitting one to clearly identify the hosting magnetic state of a given excitation via the scattering pattern in reciprocal space. As a point of reference, we demonstrate the potential of REXS FMR using the insulating cubic chiral magnet Cu_2OSeO_3 , which was studied previously both by means of REXS [26–31] and standard microwave spectroscopy [11,12,32–36].

Our present study was carried out on the beam line PM2 at BESSY II with the VEK MAG end station [37]. The sample was a single-crystal cuboid of Cu_2OSeO_3 , cut from an ingot grown by means of chemical vapor transport, with dimensions of $1.8 \times 0.5 \times 0.5 \text{ mm}^3$ and edges oriented parallel to [110], [001], and $[\bar{1}10]$. One of the surfaces normal to [001] was mechanically polished. The sample

was placed into the 1 mm wide gap of a coplanar waveguide with the polished surface being on top. The sample slightly protrudes the top surface of the waveguide resulting in microwave excitation that comprises both in-plane and out-of-plane components. Typical excitation fields are of the order of 3 to 10 μT , depending on the excitation frequency. For the REXS measurements, the energy of the circularly polarized photons is tuned to the Cu L_3 edge (931 eV). Note that the element specific character of REXS is also inherent to REXS FMR. Further note that only in resonant x-ray scattering is the crystallographically forbidden Bragg peak at $2\theta \approx 96.5^\circ$ observed [27,28,38,39].

The geometry of the experiment is illustrated in Fig. 1(a). The sample surface is illuminated by a x-ray spot of 100 μm diameter. The scattered intensity of the structural (001) Bragg peak and its magnetic satellites is captured using a photodiode. Initially the diode angle (2θ) is adjusted such that the intensity of the Bragg peak is maximized. Subsequently, (2θ) remains fixed, and the

reciprocal space around the Bragg peak is mapped by varying the sample angle ω and the vertical diode position z_d . The diode is located behind a pinhole with a diameter of 300 μm that convolutes the measured signal, leading to an elongation of the peaks in the linearly scanned z_d direction. Despite the rather small sample-detector distance of 20 mm, the Bragg peak and its magnetic satellites may be separated clearly. Using the superconducting vector magnet at VEKMAG, the magnetic field is applied parallel to the [110] axis, the [001] axis, or the incoming x-ray beam.

The magnetic phase diagram of Cu_2OSeO_3 is schematically depicted in Fig. 1(b) [6,40]. Starting in the paramagnetic (pm) state at high temperatures and low fields, long-wavelength helimagnetic order (wavelength $\lambda=620 \text{ \AA}$) is observed below the transition temperature $T_c = 58 \text{ K}$. In the helical state, macroscopic domains of helices propagate along one of the easy $\langle 001 \rangle$ axes. In the corresponding reciprocal space map, shown in Fig. 1(c), the structural (001) Bragg peak is surrounded by four magnetic satellite peaks ($\delta 01$), ($\bar{\delta} 01$), ($0\delta 1$), and ($0\bar{\delta} 1$). Although after zero-field cooling the equivalent domains are expected to be populated equally across a bulk sample, the present experiment maps only a few domains due to the small x-ray spot size, rendering asymmetric intensity distributions possible.

Under applied magnetic field, the propagation directions of the helices reorient into the field direction, and finite net magnetization emerges as the magnetic moments increasingly tilt towards the field direction. In REXS, this conical state is associated with magnetic satellites along the field direction that are observed when the field is applied perpendicular to the [001] direction, as shown in Fig. 1(d). Further increasing the magnetic field to the critical field H_{c2} results in a field-polarized state in which the moments are aligned along the field and no long-wavelength modulation is observed (not shown).

At intermediate magnetic field just below T_c , a pocket of the skyrmion lattice state is observed. The trigonal order of the spin whirls in the plane perpendicular to the field translates to the characteristic sixfold pattern of magnetic satellites in both small-angle neutron scattering [41–45] and REXS [26–31], as shown in Fig. 1(e). Under field cooling, the skyrmion lattice may be frozen-in to lower temperatures as a metastable state [17,20,23,46]. As depicted in Fig. 1(f), the intensity of the magnetic satellites increases by an order of magnitude due to the increase of the magnetic moment with decreasing temperature.

Typical REXS-FMR data are shown in Fig. 2 for the field-polarized state at $T = 15 \text{ K}$, when a field larger than $\mu_0 H_{c2} \approx 125 \text{ mT}$ is applied parallel to the beam direction [47]. Because of the lack of a long-wavelength modulation, there are no magnetic satellites around the structural (001) Bragg peak. This peak, however, comprises a magnetic contribution that depends on the magnitude and orientation of the magnetization \vec{M} with respect to the

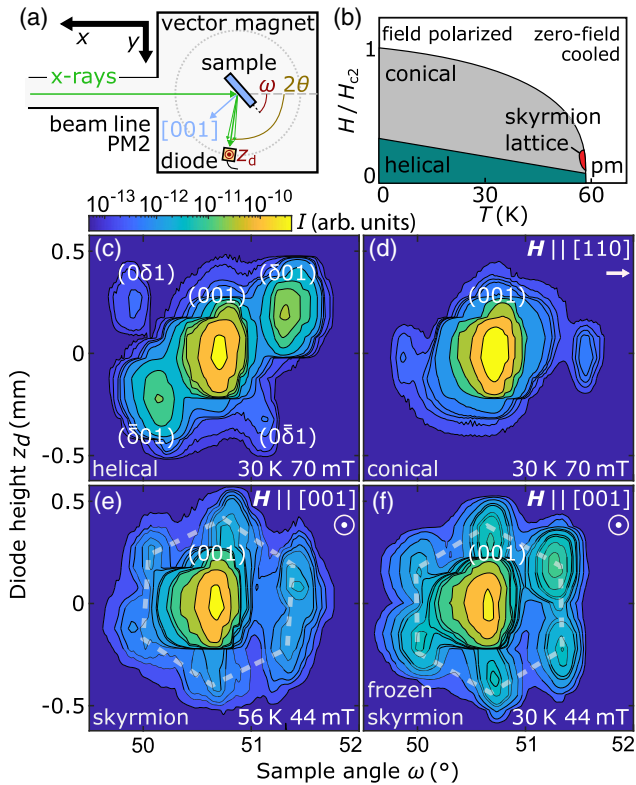


FIG. 1. Setup and typical REXS data. (a) Schematic view of the experimental setup. (b) Schematic zero-field cooled magnetic phase diagram of Cu_2OSeO_3 . (c) Reciprocal space map around the (001) Bragg peak in the helical state. (d) Reciprocal space map in the conical state. The magnetic field is applied along the [110] axis, i.e., within the sample plane. (e),(f) Reciprocal space map in the skyrmion lattice state. The magnetic field is applied along the [001] axis, i.e., perpendicular to the sample plane. Under field cooling, the skyrmion lattice may be metastable frozen-in to lower temperatures.

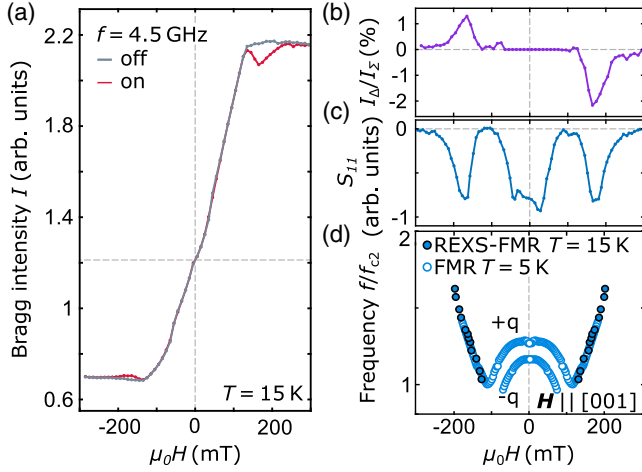


FIG. 2. REXS FMR on the structural (001) peak. (a) Intensity of the Bragg peak as a function of magnetic field applied parallel to the incoming x-ray beam, tracking the magnetization of the sample. Data are recorded at each field step with microwave excitation on (red curve) and off (gray curve). (b) Relative change of the intensity under excitation. (c) Reflected microwave power, S_{11} , as a function of field. The signature around zero field is attributed to the helimagnetic states. (d) Resonant modes for the magnetic field along the [001] axis at low temperature. Frequencies are normalized to their value at H_{c2} . Resonance fields inferred from REXS FMR (solid symbols) are compared to resonance frequencies inferred from microwave spectroscopy (open symbols).

incident and scattered x-ray wave vector. In turn, the field dependence of the magnetization may be inferred by tracking the intensity of the Bragg peak, shown in Fig. 2(a). Clear kinks at $\pm H_{c2}$ and saturated behavior at larger fields are observed when the microwave excitation is switched off (the gray curve). Subtle changes in the curve's slope indicate phase transitions which are discussed in more detail in Refs. [41,48,49]. As the magnetic contribution includes terms linear and quadratic in \vec{M} , the intensity curve is not symmetric with respect to zero field. We refer the reader to the Supplemental Material [50] and Refs. [51,52] for information on the determination of the absolute magnetization values.

Resonant excitation is studied by repeatedly switching on and off the microwave excitation while stepping the magnetic field, starting at high positive fields. At each field point, the REXS intensity under excitation is integrated for 3 s before the excitation is switched off and the intensity is integrated again for 3 s. For an excitation frequency of 4.5 GHz (the red curve), a minimum of the magnetic intensity contribution emerges in the field-polarized state above H_{c2} . As shown in Fig. 2(b), the normalized signal difference, $(I_{\text{on}} - I_{\text{off}})/(I_{\text{on}} + I_{\text{off}})$, at this minimum is of the order of 2%, which translates to a reduction of the magnetization by about 6.5%. Note that the way how the excitation is applied means that the magnetization reproducibly switches from its reduced to its regular value at

each field step. When assuming that precessional motion of the moments causes the reduction, a precession angle of 21° is required. This value is large but plausible considering the rather low effective damping of $\alpha \approx 10^{-4}$ observed in the insulator Cu_2OSeO_3 [53,54]. In contrast, a change of the moment of 6.5% by heating effects requires an increase (decrease) of the sample temperature by ~ 13 K after switching the excitation on (off) in less than the time frame of 1 s resolvable in the present REXS experiment. Such drastic heating effects, however, would interfere when studying the skyrmion lattice state with its rather narrow temperature width of ~ 2 K close to T_c (see below) and can be excluded.

Simultaneously with the REXS measurements, the reflected microwave power S_{11} of the coplanar waveguide was recorded using a Schottky diode detector. As shown in Fig. 2(c), minima in the field-polarized state above $\pm H_{c2}$ are observed at the same field values as in REXS. An additional broad signature around zero field is attributed to resonant excitations in the helimagnetic state, notably of the $\pm q$ modes. The absence of these resonances in the REXS data highlights the potential of REXS FMR to selectively study individual magnetic phases and determine the origin of specific excitations. Figure 2(d) shows that with increasing excitation frequency the resonance field in REXS data increases linearly, consistent with Kittel behavior in the field-polarized state. The resonance field values in the field-polarized state are also in excellent agreement with resonance frequencies inferred from conventional microwave spectroscopy using a vector network analyzer (spectra not shown).

As one of its decisive advantages, REXS FMR may be carried out not only on structural Bragg peaks but also on magnetic satellites, allowing us to unambiguously make the connection between the underlying magnetic phase and the resonant mode. In Fig. 3(a), the intensity at a helical satellite position is shown as a function of field for different excitation frequencies at $T = 15$ K. Similar to before, data are recorded with microwave excitation switched on and off at each magnetic field step. The integration time was increased to 10 s. Finite intensity arises only around zero field, where the helical state is observed in the magnetic phase diagram after zero-field cooling; see Fig. 1(b). Note, however, that the field is applied along [001], i.e., an easy axis for the helices in Cu_2OSeO_3 , and the measurement starts in the field-polarized state. Therefore, when decreasing the field to zero through the conical state, the helices may be expected to remain in the helical domain oriented along the field direction even at zero field [55], resulting in the absence of magnetic satellites in the present scattering geometry at temperatures well below T_c .

This putative contradiction connects to the recent discovery that Cu_2OSeO_3 hosts not only a skyrmion lattice at high temperatures, common to all cubic chiral magnets, but also an independent second skyrmion phase at low

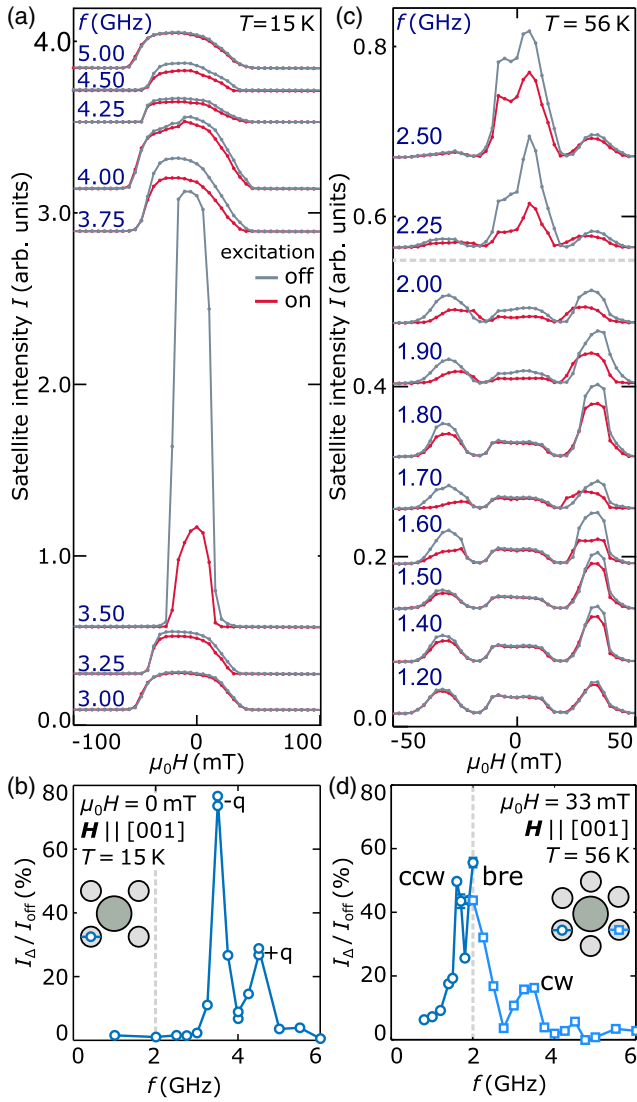


FIG. 3. REXS FMR on the magnetic satellites. (a) Intensity of a helical satellite as a function of magnetic field for different excitation frequencies. Data are recorded at each field step with microwave excitation on (red curves) and off (gray curves). The large value at 3.5 GHz is attributed to changes of the spin texture; see the text for details. (b) Relative reduction of the helical satellite intensity at zero field as a function of frequency. The sketch illustrates the position of the detector diode. Statistical error bars are typically much smaller than the symbol size. (c) Intensity at the reciprocal space position of a skyrmion lattice satellite. Around zero field, the tail of the broad helical satellite is observed at the skyrmion satellite position. (d) Relative reduction of the skyrmion satellite intensity at a field of 35 mT as a function of frequency.

temperatures [25,49]. In contrast to the high-temperature phase, the low-temperature phase is stabilized by magneto-crystalline anisotropies and exists only for field values around H_{c2} applied along [001]. Because of the topological protection inherent to skyrmions and the rather low temperature, the energy barrier of the low-temperature skyrmion

phase is comparatively high. As a result, the skyrmion state exhibits a rather glassy texture without well-defined long-range order. When this state decays at lower fields by means of coalescence of neighboring skyrmions, a texture resembling poorly ordered helices with propagation perpendicular to the field forms [56,57]. The weak magnetic satellites associated with such a helical state are detected in our REXS experiment. Perhaps most strikingly, the glassy texture is highly susceptible to changes induced by resonant microwave excitation, as explained in the following.

At low and high frequencies, i.e., when the excitation is off resonance, data with microwave switched on and off agree with each other, corroborating that heating effects are negligible. In resonance, the excitation distinctly reduces the satellite intensity. Consistent with the behavior in the field-polarized state, the intensity reproducibly switches between its low and high value at each field step and the reduction is attributed to a precessional motion of the magnetic moments. Note, however, that data without excitation (gray curves) are expected to track each other as long as the same magnetic texture is probed, which is clearly not the case.

The discrepancy becomes especially pronounced for an excitation frequency of 3.5 GHz, for which the satellite intensity increases by an order of magnitude while the field range shrinks by a factor of 2. This finding suggests that the microwave excitation interacts with the glassy magnetic texture described above, improving its long-range order. In resonance, this pumping effect is particularly effective, and the corresponding magnetic satellite in reciprocal space not only increases in intensity but also decisively sharpens.

When also taking into account a small misalignment between sample plane and field direction, as a result, the scattering condition is fulfilled only in a reduced field interval around zero field. In Fig. 3(b), the relative reduction of the helical satellite intensity at zero field is shown as a function of the excitation frequency. Two sharp maxima are observed that are unambiguously attributed to the $-q$ and $+q$ collective modes of the helical state. Both frequency values and heights of the maxima are in excellent agreement with the literature [11,12].

Finally, REXS FMR on the high-temperature skyrmion lattice is presented in Fig. 3(c), showing the intensity at a skyrmion satellite position as a function of field at $T=56$ K for different excitation frequencies. Starting the description off resonance at low excitation frequency (bottom), measurements with and without microwave excitation track each other. The intensity maxima in finite fields around ± 30 mT are attributed to the skyrmion lattice state. In addition, finite intensity emerges around zero field as the tail of the broad helical satellite close by in reciprocal space reaches the position of the skyrmion satellite. At higher frequencies, a distinct reduction of the skyrmion satellite intensity is observed under microwave excitation,

again attributed to a precessional motion of the magnetic moments. At frequencies above 1.9 GHz, resonance effects associated with the helical state are observed around zero field.

In order to further analyze the skyrmion resonances, the relative reduction of the satellite intensity at 35 mT, i.e., in the skyrmion lattice state, is depicted in Fig. 3(d) as a function of the excitation frequency. Three distinct maxima are observed and are associated with the counterclockwise (CCW) gyration, breathing (bre), and clockwise (CW) gyration modes, in excellent agreement with the literature [11,12]. The relative heights of the maxima are also perfectly consistent with calculated spectral weight distributions, as the coplanar waveguide combines in-plane excitation, driving the two gyration modes, and out-of-plane excitation, driving the breathing mode [35]. Owing to a photon penetration depth of about 30 nm, the REXS-FMR measurements probe the recently discovered surface states of the skyrmion lattice in Cu_2OSeO_3 [58,59]. Although roughly 25% of the probed volume is expected to contain such surface states, no contributions distinguishable from the bulk resonance modes are observed, indicating that the resonance frequencies of bulk and surface states are very similar or equal. Note that above and below 2 GHz, different circulators are used, leading to a small offset in the applied microwave power. Furthermore, the diode position was changed, as indicated in the sketch in Fig. 3(d), resulting in quantitative discrepancies in the measured intensity profiles at that frequency.

In summary, we established a novel x-ray scattering technique, referred to as REXS FMR, that combines microwave excitation by means of a coplanar waveguide with detection in reciprocal space by means of magnetic REXS. In the cubic chiral magnet Cu_2OSeO_3 , we identified the resonant modes in the field-polarized, helimagnetic, and skyrmion lattice state by tracking the intensity of the structural (001) Bragg peak and its magnetic satellites under microwave excitation. The surface sensitive measurement indicates equal magnetic resonance frequencies for skyrmionic surface and bulk states. REXS FMR also allows for stroboscopic measurements in order to determine the character of eigenmodes microscopically, e.g., to distinguish between gyration and breathing modes. Also note that the selectivity to certain magnetic phases may prove particularly useful in complex magnetic environments for which the clear identification of eigenmodes in conventional microwave spectroscopy is challenging, such as for multidomain skyrmion states in lacunar spinels [14,60,61], glassy skyrmionic textures in Co-Mn-Zn compounds [62–64], or the low-temperature skyrmion state in Cu_2OSeO_3 with its concomitant tilted conical state [25,49,65].

We wish to thank W. Simeth for the fruitful discussions and the assistance with the experiments. C. H. B., G. W., and F. R. acknowledge funding from the BMBF via the VEK MAG project. A. B., C. P., S. P., G. W., and C. H. B.

acknowledge funding by the German Research Foundation via Project No. SPP2137. This project has received funding from the European Metrology Programme for Innovation and Research (EMPIR) programme co-financed by the Participating States and from the European Union's Horizon 2020 research and innovation programme. This work has been funded by the Deutsche Forschungsgemeinschaft (DFG, German Research Foundation) under Germany's Excellence Strategy EXC-2111 390814868. A. B. and C. P. acknowledge financial support from DFG TRR80 (Project No. F7), as well as ERC Advanced Grants No. 291079 (TOPFIT) and No. 788031 (ExQuiSid).

*christian.back@tum.de

- [1] C. Kittel, *Phys. Rev.* **73**, 155 (1948).
- [2] S. Kimura, M. Hagiwara, H. Ueda, Y. Narumi, K. Kindo, H. Yashiro, T. Kashiwagi, and H. Takagi, *Phys. Rev. Lett.* **97**, 257202 (2006).
- [3] S. Mühlbauer, B. Binz, F. Jonietz, C. Pfleiderer, A. Rosch, A. Neubauer, R. Georgii, and P. Böni, *Science* **323**, 915 (2009).
- [4] X. Z. Yu, Y. Onose, N. Kanazawa, J. H. Park, J. H. Han, Y. Matsui, N. Nagaosa, and Y. Tokura, *Nature (London)* **465**, 901 (2010).
- [5] X. Z. Yu, N. Kanazawa, Y. Onose, K. Kimoto, W. Z. Zhang, S. Ishiwata, Y. Matsui, and Y. Tokura, *Nat. Mater.* **10**, 106 (2011).
- [6] S. Seki, X. Z. Yu, S. Ishiwata, and Y. Tokura, *Science* **336**, 198 (2012).
- [7] N. Nagaosa and Y. Tokura, *Nat. Nanotechnol.* **8**, 899 (2013).
- [8] M. Date, K. Okuda, and K. Kadowaki, *J. Phys. Soc. Jpn.* **42**, 1555 (1977).
- [9] M. I. Kobets, K. G. Dergachev, E. N. Khatsko, A. I. Rykova, P. Lemmens, D. Wulferding, and H. Berger, *Low Temp. Phys.* **36**, 176 (2010).
- [10] J. D. Koralek, D. Meier, J. P. Hinton, A. Bauer, S. A. Parameswaran, A. Vishwanath, R. Ramesh, R. W. Schoenlein, C. Pfleiderer, and J. Orenstein, *Phys. Rev. Lett.* **109**, 247204 (2012).
- [11] Y. Onose, Y. Okamura, S. Seki, S. Ishiwata, and Y. Tokura, *Phys. Rev. Lett.* **109**, 037603 (2012).
- [12] T. Schwarze, J. Waizner, M. Garst, A. Bauer, I. Stasinopoulos, H. Berger, C. Pfleiderer, and D. Grundler, *Nat. Mater.* **14**, 478 (2015).
- [13] M. Mochizuki, *Phys. Rev. Lett.* **108**, 017601 (2012).
- [14] I. Kézsmárki, S. Bordács, P. Milde, E. Neuber, L. M. Eng, J. S. White, H. M. Rønnow, C. D. Dewhurst, M. Mochizuki, K. Yanai, H. Nakamura, D. Ehlers, V. Tsurkan, and A. Loidl, *Nat. Mater.* **14**, 1116 (2015).
- [15] A. K. Nayak, V. Kumar, T. Ma, P. Werner, E. Pippel, R. Sahoo, F. Damay, U. K. Rößler, C. Felser, and S. S. P. Parkin, *Nature (London)* **548**, 561 (2017).
- [16] T. Kurumaji, T. Nakajima, V. Ukleev, A. Feoktystov, T. Arima, K. Kakurai, and Y. Tokura, *Phys. Rev. Lett.* **119**, 237201 (2017).
- [17] W. Münzer, A. Neubauer, T. Adams, S. Mühlbauer, C. Franz, F. Jonietz, R. Georgii, P. Böni, B. Pedersen,

- M. Schmidt, A. Rosch, and C. Pfleiderer, *Phys. Rev. B* **81**, 041203(R) (2010).
- [18] A. Bauer and C. Pfleiderer, *Phys. Rev. B* **85**, 214418 (2012).
- [19] H. Oike, A. Kikkawa, N. Kanazawa, Y. Taguchi, M. Kawasaki, Y. Tokura, and F. Kagawa, *Nat. Phys.* **12**, 62 (2016).
- [20] Y. Okamura, F. Kagawa, S. Seki, and Y. Tokura, *Nat. Commun.* **7**, 12669 (2016).
- [21] K. Karube, J. S. White, N. Reynolds, J. L. Gavilano, H. Oike, A. Kikkawa, F. Kagawa, Y. Tokunaga, H. M. Rønnow, Y. Tokura, and Y. Taguchi, *Nat. Mater.* **15**, 1237 (2016).
- [22] K. Karube, J. S. White, D. Morikawa, M. Bartkowiak, A. Kikkawa, Y. Tokunaga, T. Arima, H. M. Rønnow, Y. Tokura, and Y. Taguchi, *Phys. Rev. Mater.* **1**, 074405 (2017).
- [23] A. Bauer, A. Chacon, M. Halder, and C. Pfleiderer, in *Topology in Magnetism*, edited by J. Zang, V. Cros, and A. Hoffmann (Springer, New York, 2018), p. 151.
- [24] X. Z. Yu, W. Koshibae, Y. Tokunaga, K. Shibata, Y. Taguchi, N. Nagaosa, and Y. Tokura, *Nature (London)* **564**, 95 (2018).
- [25] A. Chacon, L. Heinen, M. Halder, A. Bauer, W. Simeth, S. Mühlbauer, H. Berger, M. Garst, A. Rosch, and C. Pfleiderer, *Nat. Phys.* **14**, 936 (2018).
- [26] M. C. Langner, S. Roy, S. K. Mishra, J. C. T. Lee, X. W. Shi, M. A. Hossain, Y.-D. Chuang, S. Seki, Y. Tokura, S. D. Kevan, and R. W. Schoenlein, *Phys. Rev. Lett.* **112**, 167202 (2014).
- [27] S. L. Zhang, A. Bauer, H. Berger, C. Pfleiderer, G. van der Laan, and T. Hesjedal, *Phys. Rev. B* **93**, 214420 (2016).
- [28] S. L. Zhang, A. Bauer, D. M. Burn, P. Milde, E. Neuber, L. M. Eng, H. Berger, C. Pfleiderer, G. van der Laan, and T. Hesjedal, *Nano Lett.* **16**, 3285 (2016).
- [29] S. L. Zhang, A. Bauer, H. Berger, C. Pfleiderer, G. van der Laan, and T. Hesjedal, *Appl. Phys. Lett.* **109**, 192406 (2016).
- [30] S. L. Zhang, G. van der Laan, and T. Hesjedal, *Nat. Commun.* **8**, 14619 (2017).
- [31] S. Zhang, G. van der Laan, J. Müller, L. Heinen, M. Garst, A. Bauer, H. Berger, C. Pfleiderer, and T. Hesjedal, *Proc. Natl. Acad. Sci. U.S.A.* **115**, 6386 (2018).
- [32] Y. Okamura, F. Kagawa, M. Mochizuki, M. Kubota, S. Seki, S. Ishiwata, M. Kawasaki, Y. Onose, and Y. Tokura, *Nat. Commun.* **4**, 2391 (2013).
- [33] N. Ogawa, S. Seki, and Y. Tokura, *Sci. Rep.* **5**, 9552 (2015).
- [34] S. Seki, Y. Okamura, K. Kondou, K. Shibata, M. Kubota, R. Takagi, F. Kagawa, M. Kawasaki, G. Tataru, Y. Otani, and Y. Tokura, *Phys. Rev. B* **93**, 235131 (2016).
- [35] I. Stasinopoulos, S. Weichselbaumer, A. Bauer, J. Waizner, H. Berger, M. Garst, C. Pfleiderer, and D. Grundler, *Sci. Rep.* **7**, 7037 (2017).
- [36] M. Weiler, A. Aqeel, T. M. Mostovoy, A. Leonov, S. Geprägs, R. Gross, H. Huebl, T. T. M. Palstra, and S. T. B. Goennenwein, *Phys. Rev. Lett.* **119**, 237204 (2017).
- [37] T. Noll and F. Radu, in *Proceedings of the 9th Mechanical Engineering Design of Synchrotron Radiation Equipment and Instrumentation Conference (MEDSI2016), Barcelona, Spain, 2016* (JACoW, Geneva, 2017), pp. 370–373.
- [38] D. H. Templeton and L. K. Templeton, *Phys. Rev. B* **49**, 14850 (1994).
- [39] V. E. Dmitrienko and V. A. Chizhikov, *Phys. Rev. Lett.* **108**, 187203 (2012).
- [40] A. Bauer and C. Pfleiderer, in *Topological Structures in Ferromagnetic Materials: Domain Walls, Vortices and Skyrmions*, edited by J. Seidel (Springer, New York, 2016), p. 1.
- [41] T. Adams, A. Chacon, M. Wagner, A. Bauer, G. Brandl, B. Pedersen, H. Berger, P. Lemmens, and C. Pfleiderer, *Phys. Rev. Lett.* **108**, 237204 (2012).
- [42] S. Seki, J.-H. Kim, D. S. Inosov, R. Georgii, B. Keimer, S. Ishiwata, and Y. Tokura, *Phys. Rev. B* **85**, 220406(R) (2012).
- [43] J. S. White, K. Prša, P. Huang, A. A. Omrani, I. Živković, M. Bartkowiak, H. Berger, A. Magrez, J. L. Gavilano, G. Nagy, J. Zang, and H. M. Rønnow, *Phys. Rev. Lett.* **113**, 107203 (2014).
- [44] L. J. Bannenberg, F. Qian, R. M. Dalgliesh, N. Martin, G. Chaboussant, M. Schmidt, D. L. Schlögl, T. A. Lograsso, H. Wilhelm, and C. Pappas, *Phys. Rev. B* **96**, 184416 (2017).
- [45] K. Makino, J. D. Reim, D. Higashi, D. Okuyama, T. J. Sato, Y. Nambu, E. P. Gilbert, N. Booth, S. Seki, and Y. Tokura, *Phys. Rev. B* **95**, 134412 (2017).
- [46] S. Seki, Y. Okamura, K. Shibata, R. Takagi, N. D. Khanh, F. Kagawa, T. Arima, and Y. Tokura, *Phys. Rev. B* **96**, 220404 (R) (2017).
- [47] Note that critical field values slightly vary with the applied field direction in a bar-shaped sample due to demagnetization effects.
- [48] R. B. Versteeg, I. Vergara, S. D. Schäfer, D. Bischoff, A. Aqeel, T. T. M. Palstra, M. Grüninger, and P. H. M. van Loosdrecht, *Phys. Rev. B* **94**, 094409 (2016).
- [49] M. Halder, A. Chacon, A. Bauer, W. Simeth, S. Mühlbauer, H. Berger, L. Heinen, M. Garst, A. Rosch, and C. Pfleiderer, *Phys. Rev. B* **98**, 144429 (2018).
- [50] See Supplemental Material at <http://link.aps.org/supplemental/10.1103/PhysRevLett.123.167201> for details of how to extract a magnetization trace from the Bragg peak intensity.
- [51] G. van der Laan, *C.R. Phys.* **9**, 570 (2008).
- [52] S. L. Zhang, G. van der Laan, and T. Hesjedal, *Phys. Rev. B* **96**, 094401 (2017).
- [53] I. Stasinopoulos, S. Weichselbaumer, A. Bauer, J. Waizner, H. Berger, S. Maendl, M. Garst, C. Pfleiderer, and D. Grundler, *Appl. Phys. Lett.* **111**, 032408 (2017).
- [54] H. G. Bauer, P. Majchrak, T. Kachel, C. H. Back, and G. Woltersdorf, *Nat. Commun.* **6**, 8274 (2015).
- [55] A. Bauer, A. Chacon, M. Wagner, M. Halder, R. Georgii, A. Rosch, C. Pfleiderer, and M. Garst, *Phys. Rev. B* **95**, 024429 (2017).
- [56] P. Milde, D. Köhler, J. Seidel, L. M. Eng, A. Bauer, A. Chacon, J. Kindervater, S. Mühlbauer, C. Pfleiderer, S. Buhandt, C. Schütte, and A. Rosch, *Science* **340**, 1076 (2013).
- [57] J. Wild, T. N. G. Meier, S. Pöllath, M. Kronseder, A. Bauer, A. Chacon, M. Halder, M. Schowalter, A. Rosenauer, J. Zweck, J. Müller, A. Rosch, C. Pfleiderer, and C. H. Back, *Sci. Adv.* **3**, e1701704 (2017).
- [58] S. L. Zhang, G. van der Laan, W. W. Wang, A. A. Haghighirad, and T. Hesjedal, *Phys. Rev. Lett.* **120**, 227202 (2018).

- [59] W. Legrand, J.-Y. Chauleau, D. Maccariello, N. Reyren, S. Collin, K. Bouzehouane, N. Jaouen, V. Cros, and A. Fert, *Sci. Adv.* **4**, eaat0415 (2018).
- [60] D. Ehlers, I. Stasinopoulos, V. Tsurkan, H.-A. Krug von Nidda, T. Fehér, A. Leonov, I. Kézsmárki, D. Grundler, and A. Loidl, *Phys. Rev. B* **94**, 014406 (2016).
- [61] Y. Okamura, S. Seki, S. Bordács, A. Butykai, V. Tsurkan, I. Kézsmárki, and Y. Tokura, *Phys. Rev. Lett.* **122**, 057202 (2019).
- [62] Y. Tokunaga, X. Z. Yu, J. S. White, H. M. Rønnow, D. Morikawa, Y. Taguchi, and Y. Tokura, *Nat. Commun.* **6**, 7638 (2015).
- [63] R. Takagi, D. Morikawa, K. Karube, N. Kanazawa, K. Shibata, G. Tatara, Y. Tokunaga, T. Arima, Y. Taguchi, Y. Tokura, and S. Seki, *Phys. Rev. B* **95**, 220406(R) (2017).
- [64] K. Karube, J. S. White, D. Morikawa, C. D. Dewhurst, R. Cubitt, A. Kikkawa, X. Yu, Y. Tokunaga, T. Arima, H. M. Rønnow, Y. Tokura, and Y. Taguchi, *Sci. Adv.* **4**, eaar7043 (2018).
- [65] F. Qian, L. J. Bannenberg, H. Wilhelm, G. Chaboussant, L. M. Debeer-Schmitt, M. P. Schmidt, A. Aqeel, T. T. M. Palstra, E. Brück, A. J. E. Lefering, C. Pappas, M. Mostovoy, and A. O. Leonov, *Sci. Adv.* **4**, eaat7323 (2018).