

Pressure-Induced Unconventional Superconducting Phase in the Topological Insulator Bi_2Se_3

Kevin Kirshenbaum,¹ P. S. Syers,¹ A. P. Hope,¹ N. P. Butch,² J. R. Jeffries,² S. T. Weir,² J. J. Hamlin,³
M. B. Maple,³ Y. K. Vohra,⁴ and J. Paglione^{1,*}

¹*Department of Physics, Center for Nanophysics and Advanced Materials, University of Maryland,
College Park, Maryland 20742, USA*

²*Condensed Matter and Materials Division, Lawrence Livermore National Laboratory, Livermore, California 94550, USA*

³*Department of Physics, University of California, San Diego, La Jolla, California 92093, USA*

⁴*Department of Physics, University of Alabama at Birmingham, Birmingham, Alabama 35294, USA*

(Received 26 February 2013; published 20 August 2013)

Simultaneous low-temperature electrical resistivity and Hall effect measurements were performed on single-crystalline Bi_2Se_3 under applied pressures up to 50 GPa. As a function of pressure, superconductivity is observed to onset above 11 GPa with a transition temperature T_c and upper critical field H_{c2} that both increase with pressure up to 30 GPa, where they reach maximum values of 7 K and 4 T, respectively. Upon further pressure increase, T_c remains anomalously constant up to the highest achieved pressure. Conversely, the carrier concentration increases continuously with pressure, including a tenfold increase over the pressure range where T_c remains constant. Together with a quasilinear temperature dependence of H_{c2} that exceeds the orbital and Pauli limits, the anomalously stagnant pressure dependence of T_c points to an unconventional pressure-induced pairing state in Bi_2Se_3 that is unique among the superconducting topological insulators.

DOI: [10.1103/PhysRevLett.111.087001](https://doi.org/10.1103/PhysRevLett.111.087001)

PACS numbers: 74.62.Fj, 74.20.Mn, 74.25.-q, 74.70.-b

The interplay between superconductivity and topological insulator (TI) surface states has recently received enormous attention due to the observation of the long sought Majorana quasiparticle in InSb nanowires [1] and the promise of realizing topologically protected quantum computation [2]. Characterized by a nontrivial Z_2 band topology with a bulk insulating energy gap that leads to a chiral metallic surface state with spin-momentum locking, TI surface states are analogous to the quantum Hall edge state and arise at the surface of a TI material due to the topological nature of the crossover between a nontrivial bulk insulating gap and the trivial insulating gap of the vacuum [3]. The use of the proximity effect [4–7] to induce superconductivity in Bi_2Se_3 , the most well studied TI material to date, has had success in coupling these two states but suffers from the presence of bulk conducting states which require gating to realize true TI supercurrents [8].

Theoretically, nontrivial surface Andreev bound states can be directly realized by opening a superconducting energy gap in a bulk conductor [9], which is why the quest for the topological superconductor is one of the most active areas in condensed-matter physics. Recently, superconductivity has been found in materials with topologically nontrivial band structures, such as in $\text{Cu}_x\text{Bi}_2\text{Se}_3$ [10–13] and YPtBi [14,15], providing not only intrinsic systems with which to study the interplay between superconductivity and TI states, but also the potential to realize a new class of odd-parity, unconventional superconductivity [9].

The application of pressure has also uncovered superconductivity in several related materials, such as elemental Bi [16], Bi_2Te_3 [17], and Bi_4Te_3 [18], offering another

route to realizing topological superconductivity. In this study, we measure transport properties of Bi_2Se_3 over an extended pressure range to investigate the ground state at ultrahigh pressures by using a designer diamond anvil cell capable of measuring both longitudinal and transverse resistivities up to 50 GPa. We observe the onset of a superconducting phase above 11 GPa that achieves a maximum transition temperature $T_c = 7$ K above 30 GPa that maintains its value up to the highest pressures achieved in this study. We discuss the implications of an anomalously constant T_c that does not change with pressure, as well as an upper critical field that surpasses both orbital and Pauli limits, in terms of an unconventional superconducting state.

High-quality single crystals of Bi_2Se_3 were grown in excess selenium using the modified Bridgman technique described in detail elsewhere [19]. Single-crystal samples—with estimated thickness $(12.5 \pm 2.5) \mu\text{m}$ and measured carrier concentration $\sim 10^{17} \text{ cm}^{-3}$ —were placed in contact with the electrical microprobes of an eight-probe designer diamond anvil cell [20] configured to allow combinations of both longitudinal and transverse four-wire resistance measurements [21]. Pressures were determined from the shift of the ruby fluorescence line [22]. Electronic transport measurements were performed at pressures between 4.1 and 50.1 GPa using the standard four-probe technique in both a dilution refrigerator and a pumped ^4He cryostat, in magnetic fields up to 15 T directed parallel to the c axis of the unpressurized ($R\text{-}3m$) crystal structure of Bi_2Se_3 . Preliminary x-ray diffraction experiments are described.

Figure 1 presents a summary of the longitudinal (ρ_{xx}) resistivities as a function of both temperature T and magnetic field H measured at pressures above 13 GPa. (Resistivity data measured at lower pressures is presented elsewhere [23].) As shown previously, electrical transport measurements indicate a metallization of Bi_2Se_3 beginning above 8 GPa as revealed by the following: a tenfold decrease in the value of $\rho(300\text{ K})$, a change in the temperature dependence of $\rho(T)$ from semiconducting to metallic conduction, the loss of curvature and development of a linear Hall resistivity $\rho_H(H)$, and the appearance of magnetoresistance that varies with H^2 [23]. Just above this pressure, traces of superconductivity appear in the form of partial resistive transitions, onseting below 300 mK at 11.9 GPa (not shown) and gradually growing with increasing pressure. Interestingly, the value of carrier density where superconductivity first appears

($\sim 10^{20}\text{ cm}^{-3}$) is close to the carrier concentration where superconductivity is seen in $\text{Cu}_x\text{Bi}_2\text{Se}_3$ which may indicate that increased carrier concentrations are necessary for superconductivity in Bi_2Se_3 [12]. As shown in Fig. 1(a), a nearly complete resistive transition appears at 13.6 GPa with midpoint transition $T_c = 0.5\text{ K}$ that gradually increases with increasing pressures up to $\sim 30\text{ GPa}$. Likewise, as presented in Fig. 1(b), the upper critical field H_{c2} (defined as the midpoint of the resistive transition in field) also grows with pressure, with a magnetic field dependence very similar in form to the temperature dependence presented in Fig. 1(a), which does not rule out filamentary superconductivity [21] but does suggest bulk phase transitions. Also, similar to the pressure evolution of T_c , H_{c2} increases monotonically up to 30 GPa, above which both quantities abruptly stop growing and T_c remains strikingly constant at 7 K up to 50.1 GPa.

A transition temperature that is constant over such a large pressure range is highly anomalous. In conventional phonon-mediated superconductors—like elemental Bi [16] and the two-band superconductor MgB_2 [24]— T_c typically decreases with increasing pressure due to phonon stiffening. However, when the electronic bandwidth is sensitive to volume change, such as in transition metals, an increase in T_c with pressure is also possible [25]. These two contrasting pressure-dependent evolutions of T_c are engendered by the *implicit* dependence of T_c on volume through the phonon cutoff frequency (Θ_D or $\langle\omega_c\rangle$) and the electronic density of states [$N(E_F)$], as given by the BCS relationship or the McMillan strong-coupling formalism [26,27]. Thus, for Bi_2Se_3 , it is possible that these two mechanisms may be balanced so as to produce a pressure-invariant T_c over a wide range of pressure.

As shown in Fig. 2, a strong sensitivity of the transverse Hall resistance R_{xy} to pressure suggests that the electronic structure of Bi_2Se_3 indeed undergoes a dramatic change with pressure. A one-band Drude approximation, motivated by the linear field dependence of R_{xy} , yields an estimated electron carrier density n_H that increases strongly with increasing pressure, consistent with the increasing metallicity observed in ρ_{xx} . As summarized in Fig. 3, this carrier density increases by over four orders of magnitude over the entire pressure range, suggesting significant changes in the band structure. More surprising, n_H increases by a factor of ten between 30 and 50 GPa, the same range over which T_c remains constant. The increasing carrier density with applied pressure suggests an increasing $N(E_F)$, which, by itself, would tend to promote an increasing T_c . If one assumes a typical pressure-induced phonon stiffening, then the Hall data are at least amenable to a scenario where balanced electronic and phonon contributions lead to the observed pressure invariance of T_c . However, in either the BCS or the strong-coupling

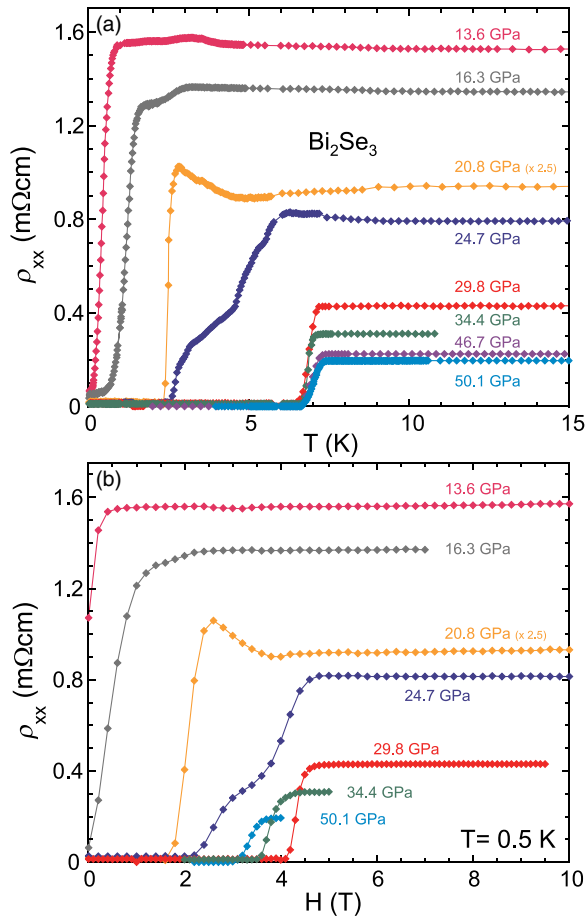


FIG. 1 (color online). Longitudinal resistivity of Bi_2Se_3 for various applied pressures as a function of (a) temperature and (b) magnetic field oriented parallel to the crystallographic c axis of the ambient pressure phase, at a fixed temperature of 0.5 K. (Data at 20.8 GPa were obtained with a different lead configuration resulting in larger measurement uncertainty, and are, therefore, scaled by a factor of 2.5 to match the overall trend reported previously [23].)

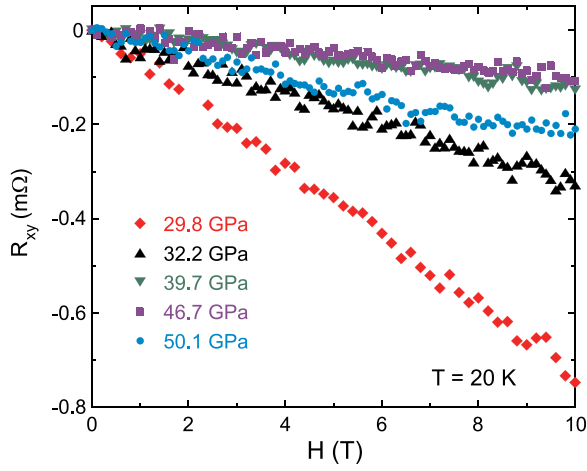


FIG. 2 (color online). Transverse Hall resistance of Bi_2Se_3 as a function of applied pressure, showing linear behavior with a negative slope indicative of a single, electronlike band. The slope decreases with applied pressure until 46.7 GPa, implying an increasing carrier concentration with pressure; 50.1 GPa presents a larger slope and concordantly smaller carrier concentration (see text for details).

theories, there are other parameters that affect the pressure dependence of T_c [24–27]. In the context of phonon-mediated superconductivity, the strikingly pressure-independent value of T_c would necessarily require a fine

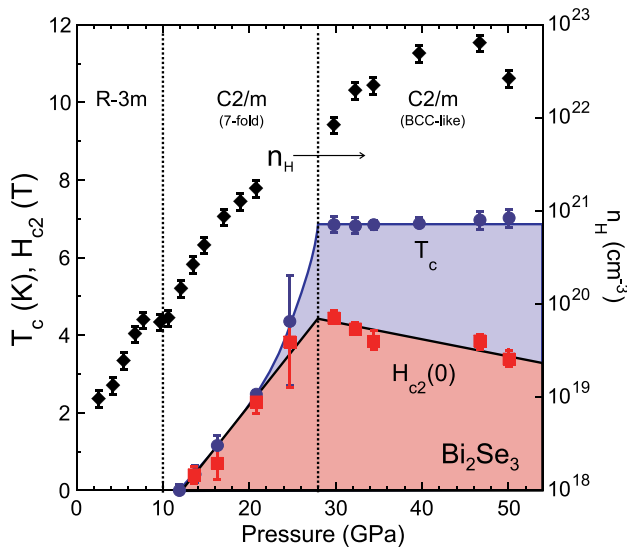


FIG. 3 (color online). Phase diagram of Bi_2Se_3 showing the evolution of carrier concentration n_H (diamonds), superconducting transition temperature T_c (circles), and upper critical field H_{c2} at zero temperature (squares) as a function of pressure for fields orientation along the crystallographic c axis of the ambient-pressure structure; n_H data below 21 GPa are from Ref. [23]. Dotted vertical lines correspond to known structural phase transitions between rhombohedral ($R-3m$) and monoclinic ($C2/m$) structures near 10 GPa, and a transition to a bcc-like ($C2/m$) structure near 28 GPa, respectively [21,23,28].

balance of parameters and an unconventional electronic contribution [21].

Moreover, the arrested evolution of T_c in Bi_2Se_3 is in contrast to that observed in two other closely related compounds where T_c is strongly suppressed with pressure, as found in Bi_4Te_3 [18] and the closely related TI material Bi_2Te_3 [17]. Interestingly, Bi_2Se_3 is known to undergo at least two structural transitions under pressure, from the ambient-pressure rhombohedral ($R-3m$) structure to a lower-symmetry monoclinic ($C2/m$) structure near 10 GPa, and then to an unknown phase above 28 GPa as measured by Raman spectroscopy [28]. In both Bi_2Te_3 and Bi_4Te_3 , superconductivity appears in the monoclinic phase and abruptly strengthens upon crossing a second structural transition into a cubic phase at higher pressures [18,28–30]. Our preliminary x-ray diffraction experiments on Bi_2Se_3 yield similar results, including a structural transition to a sevenfold ($C2/m$) structure near 10 GPa followed by another transition to a bcc-like ($C2/m$) structure above 28 GPa [21]. As shown in Fig. 3, the onset of superconductivity in Bi_2Se_3 and its sharp increase to 7 K both coincide with these structural transitions in a manner similar to the other systems, suggesting a close correlation among all of these high-pressure phases. However, with T_c in Bi_2Te_3 and Bi_4Te_3 both exhibiting a notable suppression $dT_c/dP \sim -0.13$ K/GPa after reaching their maximum values, it is clear that the behavior in Bi_2Se_3 is anomalous.

The unique pressure evolution of T_c in Bi_2Se_3 suggests the presence of a very unconventional superconducting state. This is further evidenced by an anomalous temperature dependence of the upper critical field $H_{c2}(T)$. To compare the data to known models, it is useful to calculate the reduced critical field, $h^*(T) = [H_{c2}(T)/T_c]/[dH_{c2}(T)/dT]|_{T=T_c}$, and compare it to models for orbitally limited s -wave [31] and spin-triplet p -wave [32,33] superconductors. As shown in Figs. 4(b) and 4(c) for 34.4 and 50.1 GPa, respectively, $h^*(T)$ deviates significantly from the expected orbital-limited behavior predicted by the Werthamer-Helfand-Hohenberg (WHH) theory for an s -wave superconductor, $H_{c2}^{\text{orb}} \approx 0.7T_c \times dH_{c2}/dT|_{T=T_c}$ (or $h^*(0) \approx 0.7$) [31]. This is true through the entire pressure range under study, and is immediately apparent in the observed near-linear temperature dependencies of H_{c2} shown in Fig. 4(a). The quasilinear $h^*(T)$ curves in Fig. 4 are closer in form to that of a p -wave superconductor like the heavy-fermion compound UBe_{13} [34]. However, the measured $h^*(0)$ values in Bi_2Se_3 still slightly exceed the maximum value of $h^*(0) \approx 0.8$ expected for a polar p -wave state [32,33], further hinting at the unconventional nature of the high-pressure superconducting state of Bi_2Se_3 .

To determine the influence of Pauli limiting, we calculate H_{c2} assuming that both orbital and paramagnetic pair breaking mechanisms are active. The Pauli limiting field H_p is determined by the Zeeman energy required to break

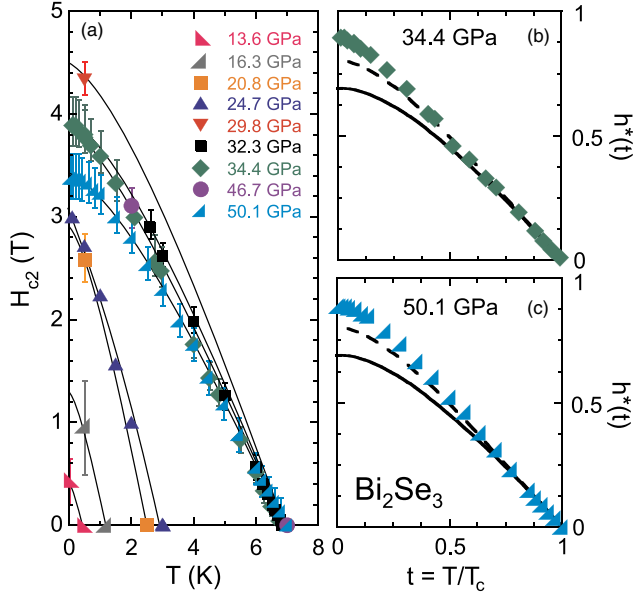


FIG. 4 (color online). (a) Upper critical field H_{c2} of Bi_2Se_3 for various pressures up to 50 GPa, with fields applied parallel to the ambient-pressure crystallographic c axis (values determined from 50% resistive transition, with error bars indicating 10%–90% values). Solid lines are guides, but all have the same functional dependence as $H_{c2}(T)$ for 34.4 GPa data. Error bars for 24.7 GPa (not shown for clarity) are ± 1 T. Panels (b) and (c) present the reduced upper critical field, $h^*(t)$ with reduced temperature $t = T/T_c$, for applied pressures of 34.4 and 50.1 GPa, respectively. Solid and dashed lines indicate the calculated $h^*(t)$ dependence for orbital limited s -wave superconductors [31] and for a polar p -wave state [32,33], respectively (see text).

Cooper pairs and equates to the gap energy Δ (e.g., $H_p = 1.84T_c$ for a BCS superconductor) [35]. In the presence of both orbital and Pauli limiting, the expected upper critical field is modified to $H_{c2}^\alpha = H_{c2}^{\text{orb}}/\sqrt{1 + \alpha^2}$, and determined by the Maki parameter $\alpha \equiv \sqrt{2}H_{c2}^{\text{orb}}/H_p$ [36]. At 34.4 GPa, the calculated values $H_{c2}^{\text{orb}} = 3.15$ T and $H_p = 12.9$ T yield $\alpha = 0.346$ and an expected modified value $H_{c2}^\alpha = 2.80$ T, notably lower than the measured value of 4 T and indicative of an absence of Pauli pair breaking. A similar case was presented for H_{c2} measurements of the related superconductors YPtBi [14,37] and $\text{Cu}_x\text{Bi}_2\text{Se}_3$ [38], which also both exhibit quasilinear $H_{c2}(T)$ behavior with zero-temperature values exceeding these universal limits. In addition, Bi_4Te_3 under pressure also exhibits a linear $H_{c2}(T)$ [18], presenting an intriguing set of strong spin-orbit-coupled superconducting materials with very similar anomalous features.

While exceeding the WHH limit can be considered a sign of unconventional superconductivity [33,35], other mechanisms should also be considered. For instance, Fermi surface topology can enhance the expected WHH limit [39] as shown in the case of the pyrochlore

superconductor KOs_2O_6 [40], although such effects cannot arise from ellipticity alone [41]. Strong electron-phonon coupling can also slightly enhance the orbital limit [42,43], although an excessive coupling constant of $\lambda \approx 4$ would be required to explain the observed $h^*(0) \approx 0.9$. Strong spin-orbit scattering was shown early on to greatly reduce the effects of Pauli paramagnetic pair breaking [31], although a dramatic enhancement is only expected in the limit of infinite scattering strength. Finally, multiband superconductivity can also manifest deviations from WHH, as shown for $\text{Lu}_2\text{Fe}_3\text{Si}_5$ [44], and calculated for MgB_2 [45] and elemental Bi under pressure [46]. While such a case cannot be ruled out for Bi_2Se_3 , the lack of evidence for multiband behavior in the normal-state transport, as evidenced by the linear R_{xy} data in field for the two high-pressure phases, suggests otherwise.

The anomalously large upper critical field that exceeds orbital and Pauli limits and the surprising insensitivity of T_c to pressure point to a unique and unconventional superconducting state in Bi_2Se_3 . The possibility of this state being topological in nature is an enticing consideration, but requires several as yet unknown criteria to be satisfied. For instance, if band inversion symmetry is present, as well as a Fermi surface that is centered at time-reversal-invariant momenta such that a Dirac-type Hamiltonian describes the band structure, topological superconductivity is indeed probable given a fully gapped pairing symmetry that is odd under spatial inversion [9]. Determination of both crystallographic and electronic structures in the high-pressure phase [21] are required to understand the implications for the pairing state and its relation to the ambient pressure topological insulator state. Finally, recent evidence of s -wave superconductivity in $\text{Cu}_x\text{Bi}_2\text{Se}_3$ [47] must be considered in this context.

In conclusion, the metallization of Bi_2Se_3 at high pressures stabilizes a superconducting ground state above 11 GPa that appears to be optimized after a second structural phase transition above 28 GPa. The resulting phase diagram exhibits many similarities to those of other pressure-induced superconducting systems with strong spin-orbit coupling, including the role of structural transitions and the presence of an upper critical field that greatly exceeds the universal predictions for orbital and Pauli pair-breaking. The anomalously large critical fields and the pressure-invariant T_c are incompatible with the expectations of archetypal, phonon-mediated, s -wave superconductors, suggesting the distinct possibility of an unconventional superconducting state in Bi_2Se_3 .

The authors gratefully acknowledge C. S. Hellberg and I. I. Mazin. Work at the University of Maryland was funded by AFOSR-MURI Grant No. FA9550-09-1-0603. Portions of this work were performed under LDRD (Tracking Code 11-LW-003). Lawrence Livermore National Laboratory is operated by Lawrence Livermore National Security, LLC, for the U.S. Department of Energy (DOE), National

Nuclear Security Administration (NNSA) under Contract No. DE-AC52-07NA27344. J. J. H. and M. B. M. acknowledge support from the NNSA under the Stewardship Science Academic Alliance program through the U.S. DOE Grant No. DE-52-09NA29459. Y. K. V. acknowledges support from DOE-NNSA Grant No. DE-FG52-10NA29660.

Note added.—After submission of this manuscript, we became aware of a similar study by Kong *et al.* [48].

*paglione@umd.edu

- [1] V. Mourik, K. Zuo, S. M. Frolov, S. R. Plissard, E. P. A. M. Bakkers, and L. P. Kouwenhoven, *Science* **336**, 1003 (2012).
- [2] J. Alicea, *Rep. Prog. Phys.* **75**, 076501 (2012); C. W. J. Beenakker, *Annu. Rev. Condens. Matter Phys.* **4**, 113 (2013).
- [3] X.-L. Qi and S.-C. Zhang, *Rev. Mod. Phys.* **83**, 1057 (2011); C. Nayak, A. Stern, M. Freedman, and S. Das Sarma, *Rev. Mod. Phys.* **80**, 1083 (2008).
- [4] P. Zareapour *et al.*, *Nat. Commun.* **3**, 1056 (2012).
- [5] L. Fu and C. L. Kane, *Phys. Rev. Lett.* **100**, 096407 (2008).
- [6] G. Koren, T. Kirzhner, E. Lahoud, K. B. Chashka, and A. Kanigel, *Phys. Rev. B* **84**, 224521 (2011).
- [7] F. Yang *et al.*, *Phys. Rev. B* **85**, 104508 (2012).
- [8] S. Cho, B. Dellabetta, A. Yang, J. Schneeloch, Z. Xu, T. Valla, G. Gu, M. J. Gilbert, and N. Mason, *Nat. Commun.* **4**, 1689 (2013).
- [9] T. H. Hsieh and L. Fu, *Phys. Rev. Lett.* **108**, 107005 (2012), and references therein.
- [10] Y. S. Hor, A. J. Williams, J. G. Checkelsky, P. Roushan, J. Seo, Q. Xu, H. W. Zandbergen, A. Yazdani, N. P. Ong, and R. J. Cava, *Phys. Rev. Lett.* **104**, 057001 (2010).
- [11] L. Wray, S.-Y. Xu, Y. Xia, Y. S. Hor, D. Qian, A. V. Fedorov, H. Lin, A. Bansil, R. J. Cava, and M. Zahid Hasan, *Nat. Phys.* **6**, 855 (2010).
- [12] M. Kriener, K. Segawa, Z. Ren, S. Sasaki, and Y. Ando, *Phys. Rev. Lett.* **106**, 127004 (2011).
- [13] S. Sasaki, M. Kriener, K. Segawa, K. Yada, Y. Tanaka, M. Sato, and Y. Ando, *Phys. Rev. Lett.* **107**, 217001 (2011).
- [14] N. P. Butch, P. Syers, K. Kirshenbaum, A. P. Hope, and J. Paglione, *Phys. Rev. B* **84**, 220504(R) (2011).
- [15] S. Chadov, X. Qi, J. Kübler, G. H. Fecher, C. Felser, and S. C. Zhang, *Nat. Mater.* **9**, 541 (2010); H. Lin, L. A. Wray, Y. Xia, S. Xu, S. Jia, R. J. Cava, A. Bansil, and M. Zahid Hasan, *ibid.* **9**, 546 (2010).
- [16] M. A. Il'ina and E. S. Itskevich, *Zh. Eksp. Teor. Fiz., Pis'ma Red.* **11**, 328 (1970) [*JETP Lett.* **11**, 218 (1970)].
- [17] J. L. Zhang *et al.*, *Proc. Natl. Acad. Sci. U.S.A.* **108**, 24 (2011); C. Zhang, L. Sun, Z. Chen, X. Zhou, Q. Wu, W. Yi, J. Guo, X. Dong, and Z. Zhao, *Phys. Rev. B* **83**, 140504(R) (2011).
- [18] J. R. Jeffries, A. L. Lima Sharma, P. A. Sharma, C. D. Spataru, S. K. McCall, J. D. Sugar, S. T. Weir, and Y. K. Vohra, *Phys. Rev. B* **84**, 092505 (2011).
- [19] N. P. Butch, K. Kirshenbaum, P. Syers, A. B. Sushkov, G. S. Jenkins, H. D. Drew, and J. Paglione, *Phys. Rev. B* **81**, 241301 (2010).
- [20] S. T. Weir, J. Akella, C. Aracne-Ruddle, Y. K. Vohra, and S. A. Catledge, *Appl. Phys. Lett.* **77**, 3400 (2000); D. Jackson, J. Jeffries, W. Qiu, J. Griffith, S. McCall, C. Aracne, M. Fluss, M. Maple, S. Weir, and Y. Vohra, *Phys. Rev. B* **74**, 174401 (2006).
- [21] See Supplemental Material at <http://link.aps.org/supplemental/10.1103/PhysRevLett.111.087001> for supporting information and data pertaining to magnetotransport and x-ray diffraction experiments under pressure.
- [22] H. K. Mao and J. A. Schouten, *J. Appl. Phys.* **69**, 6744 (1991).
- [23] J. J. Hamlin, J. R. Jeffries, N. P. Butch, P. Syers, D. A. Zocco, S. T. Weir, Y. K. Vohra, J. Paglione, and M. B. Maple, *J. Phys. Condens. Matter* **24**, 035602 (2012).
- [24] T. Tomita and E. H. Brandt, *Phys. Rev. B* **64**, 092502 (2001).
- [25] J. J. Hopfield, *Physica (Amsterdam)* **55**, 41 (1971).
- [26] J. Bardeen, L. N. Cooper, and J. R. Schrieffer, *Phys. Rev.* **106**, 162 (1957); **108**, 1175 (1957).
- [27] W. L. McMillan, *Phys. Rev.* **167**, 331 (1968).
- [28] R. Vilaplana *et al.*, *Phys. Rev. B* **84**, 184110 (2011).
- [29] R. Vilaplana *et al.*, *Phys. Rev. B* **84**, 104112 (2011).
- [30] M. Einaga, A. Ohmura, A. Nakayama, F. Ishikawa, Y. Yamada, and S. Nakano, *Phys. Rev. B* **83**, 092102 (2011).
- [31] N. R. Werthamer, E. Helfand, and P. C. Hohenberg, *Phys. Rev.* **147**, 295 (1966).
- [32] K. Maki *et al.*, *Chin. J. Phys. (Taipei)* **38**, 386 (2000).
- [33] K. Scharnberg and R. A. Klemm, *Phys. Rev. B* **22**, 5233 (1980).
- [34] M. B. Maple, J. Chen, S. Lambert, Z. Fisk, J. Smith, H. Ott, J. Brooks, and M. Naughton, *Phys. Rev. Lett.* **54**, 477 (1985).
- [35] A. M. Clogston, *Phys. Rev. Lett.* **9**, 266 (1962); B. S. Chandrasekhar, *Appl. Phys. Lett.* **1**, 7 (1962).
- [36] K. Maki, *Phys. Rev.* **148**, 362 (1966).
- [37] T. V. Bay, T. Naka, Y. K. Huang, and A. de Visser, *Phys. Rev. B* **86**, 064515 (2012).
- [38] T. V. Bay, T. Naka, Y. K. Huang, H. Luigjes, M. S. Golden, and A. de Visser, *Phys. Rev. Lett.* **108**, 057001 (2012).
- [39] T. Kita and M. Arai, *Phys. Rev. B* **70**, 224522 (2004).
- [40] T. Shibauchi *et al.*, *Phys. Rev. B* **74**, 220506(R) (2006).
- [41] V. G. Kogan and R. Prozorov, *Rep. Prog. Phys.* **75**, 114502 (2012).
- [42] J. P. Carbotte, *Rev. Mod. Phys.* **62**, 1027 (1990).
- [43] L. N. Bulaevskii, O. V. Dolgov, M. O. Ptitsyn, *Phys. Rev. B* **38**, 11 290 (1988).
- [44] Y. Nakajima, H. Hidaka, T. Nakagawa, T. Tamegai, T. Nishizaki, T. Sasaki, and N. Kobayashi, *Phys. Rev. B* **85**, 174524 (2012).
- [45] A. Gurevich, *Phys. Rev. B* **67**, 184515 (2003); *Physica (Amsterdam)* **456C**, 160 (2007).
- [46] S. Srinivasan, P. Bhattacharyya, and S. S. Jha, *Pramana* **13**, 131 (1979).
- [47] N. Levy, T. Zhang, J. Ha, F. Sharifi, A. A. Talin, Y. Kuk, and J. A. Stroscio, *Phys. Rev. Lett.* **110**, 117001 (2013).
- [48] P. P. Kong *et al.*, [arXiv:1303.0224](https://arxiv.org/abs/1303.0224).