

Synchronizing Distant Nodes: A Universal Classification of Networks

V. Flunkert,¹ S. Yanchuk,² T. Dahms,¹ and E. Schöll^{1,*}

¹*Institut für Theoretische Physik, TU Berlin, Hardenbergstraße 36, 10623 Berlin, Germany*

²*Institut für Mathematik, Humboldt Universität Berlin, Unter den Linden 6, 10099 Berlin, Germany*

(Received 30 September 2010; published 13 December 2010)

Stability of synchronization in delay-coupled networks of identical units generally depends in a complicated way on the coupling topology. We show that for large coupling delays synchronizability relates in a simple way to the spectral properties of the network topology. The master stability function used to determine the stability of synchronous solutions has a universal structure in the limit of large delay: It is rotationally symmetric around the origin and increases monotonically with the radius in the complex plane. This allows a universal classification of networks with respect to their synchronization properties and solves the problem of complete synchronization in networks with strongly delayed coupling.

DOI: 10.1103/PhysRevLett.105.254101

PACS numbers: 05.45.Xt, 02.30.Ks, 89.75.-k

Synchronization phenomena in networks are of great importance [1] in many areas. Chaos synchronization of lasers, for instance, may lead to new secure communication schemes [2]. The synchronization of neurons is believed to play a crucial role in the brain under normal conditions, for instance, in the context of cognition and learning [3], and under pathological conditions such as Parkinson's disease [4]. Time delay effects are a key issue in realistic networks. For example, the finite propagation time of light between coupled semiconductor lasers [5] significantly influences the dynamics. Similar effects occur in neuronal [6] and biological [7] networks.

To determine the stability of a synchronized state in a network of identical units, a powerful method has been developed [8], i.e., the master stability function (MSF). Recent works [9,10] have started to investigate the MSF for networks with coupling delays and found that the MSF depends nontrivially on delay times.

In this work, we show that in the limit of large coupling delays the MSF has a very simple structure. This solves the problem of complete zero-lag synchronization for networks with large coupling delay. After briefly introducing the notion of the MSF, we demonstrate the implications for large coupling delays based on a scaling theory [11]. This allows us to describe the synchronizability of networks with strongly delayed coupling depending on the type of node dynamics and spectral properties of the network topology. For example, as recently conjectured [10], networks for which the trajectory of an uncoupled unit is also a solution of the network cannot exhibit chaos synchronization for large coupling delay. The results presented here confirm and generalize these previous findings.

Consider a system of N identical units connected in a network with a coupling delay τ [10] ($x^i \in \mathbb{R}^d$, $i = 1, \dots, N$):

$$\dot{x}^i(t) = f[x^i(t)] + \sum_{j=1}^N g_{ij} h[x^j(t - \tau)]. \quad (1)$$

Here, g_{ij} is the real-valued coupling matrix, which determines the topology and the strength of each link in the network, f is a (nonlinear) function describing the dynamics of an isolated unit, and h is a possibly nonlinear coupling function. To allow for an invariant synchronization manifold (SM), the row sum $\sigma = \sum_{j=1}^N g_{ij}$ of the matrix has to be the same for each row i [8]. If the matrix is diagonalizable, the stability of the synchronized solution is governed by the MSF and the eigenvalues of the coupling matrix g_{ij} . The MSF is defined as the maximum Lyapunov exponent $\lambda_{\max}(re^{i\psi})$ as a function of the complex argument $re^{i\psi}$ arising from the variational equation $\dot{\xi}(t) = Df[x(t)]\xi(t) + re^{i\psi} Dh[x(t - \tau)]\xi(t - \tau)$, where $x(t)$ is given by the dynamics within the SM. The synchronized state is stable for a given coupling topology if the MSF is negative at all transversal eigenvalues γ_k of the coupling matrix [$\lambda_{\max}(\gamma_k) < 0$]. Here, transversal eigenvalue refers to all eigenvalues except for the eigenvalue σ associated to perturbations within the SM with corresponding eigenvector $(1, 1, \dots, 1)$.

We restrict our analysis to maps [10], but all ingredients of our argument are also valid for flows. For delay-coupled maps the dynamics in the SM is governed by the equation $x_{k+1} = f(x_k) + \sigma h(x_{k-\tau})$ with $\tau \in \mathbb{N}$ and $x_k \in \mathbb{C}^d$ or $\in \mathbb{R}^d$ and the MSF is calculated for fixed σ from

$$\xi_{k+1} = A_k \xi_k + re^{i\psi} B_k \xi_{k-\tau} \quad (2)$$

with matrices $A_k = Df(x_k)$ and $B_k = Dh(x_{k-\tau})$.

Note that when the delay is changed the dynamics in the SM changes, too. Hence, we are not able to make predictions about what happens as τ is changed. However, at a fixed large value of the delay time τ we can analyze the Lyapunov exponents arising from different values of $re^{i\psi}$ in Eq. (2). We do this in the following steps: First, we analyze the two simpler cases when the dynamics in the SM is a fixed point (FP) or a periodic orbit (PO). Then, to expand the results to chaotic dynamics in the SM, we use the fact that POs are dense in a chaotic attractor.

For FPs and POs of delay differential equations, a scaling theory for the eigenvalues or Floquet exponents in the limit of large delay [11] shows that the spectrum consists in both cases of two parts: a strongly unstable part arising from unstable eigenvalues of the system without delay and a pseudocontinuous spectrum for which the real parts of the eigenvalues approach zero in the limit of large delay. This scaling theory has been developed for flows; to prove our statements, we will extend this theory to maps.

Fixed point.—Let us first consider the case of a FP in the SM, for which $A = A_k$ and $B = B_k$ are constant. Making the ansatz $\xi_k = z^k \xi_0$, we find an equation for the multipliers z : $\det[A - zI + re^{i\psi} Bz^{-\tau}] = 0$, where I denotes the identity matrix.

For the strongly unstable spectrum, we suppose there is a solution with $|z| > 1$. Then in the limit of $\tau \rightarrow \infty$ this becomes $\det[A - zI] = 0$. Thus in the limit of large delay the eigenvalues z of A with $|z| > 1$ are also solutions of this equation and vice versa.

We are now interested in the pseudocontinuous spectrum, i.e., the solutions with $|z| \approx 1$ in the limit of large τ . We make the ansatz $z = (1 + \delta/\tau)e^{i\omega}$. In the limit $\tau \rightarrow \infty$ we have $(1 + \delta/\tau)^{-\tau} \sim e^{-\delta}$ and $(1 + \delta/\tau) \sim 1$, and thus

$$\det[A - Ie^{i\omega} + re^{-\delta} e^{i(\psi-\phi)} B] = 0 \quad (3)$$

with $\phi = \omega\tau$. As we will show below, ω as well as the parameter ϕ take on any (arbitrarily dense) values in $[-\pi, \pi]$. From this it is clear that the phase ψ in the variational equation does not change δ ; i.e., the MSF is invariant under phase shifts (rotations) and its value depends only on r .

Equation (3) is a polynomial in $\mu = re^{-\delta} e^{i(\psi-\phi)}$ for which the roots can be calculated. For example, if B is invertible, the roots μ are the eigenvalues of the matrix $-B^{-1}(A - Ie^{i\omega})$. In general, each root μ is a function of ω , and one finds the branches $\delta(\omega) = -\ln|\mu(\omega)| + \ln r$ from the definition of μ . The function $\mu(\omega)$ can admit the zero value at some point ω_0 , i.e., $\mu(\omega_0) = 0$, in the case when the matrix A has an eigenvalue with $|z| = 1$. Indeed, as follows from Eq. (3), for $\mu = 0$, $\omega = \omega_0$, and $\det B \neq 0$ we have $\det[A - Ie^{i\omega_0}] = \det[A - Iz] = 0$. In all other cases, with $\det B \neq 0$ and $|z| \neq 1$, the function $|\mu(\omega)|$ is bounded: $0 < \mu_0 \leq |\mu(\omega)| \leq \mu_1$.

If there are no strongly unstable eigenvalues, the sign of δ determines the stability in the limit of large τ , since $|z| \sim |1 + \delta/\tau|$. It is clear that δ increases monotonically with increasing r , and, in particular, δ is negative for small r and positive for large r . Thus there is a critical radius r_0 for which the first eigenvalue branch becomes unstable ($\delta > 0$), and thus the MSF changes sign.

Note that we have obtained the function $\delta(\omega)$ on which the solutions lie in the limit of large τ but not yet the exact values of ω . These values can be calculated from the expression $\mu(\omega) = re^{-\delta(\omega)} e^{i(\psi-\omega\tau)}$, which implies $\text{Arg}\mu(\omega) = \psi - \omega\tau + 2\pi k$ for any integer k . Since $\mu(\omega)$ is a known root of Eq. (3), this can be considered as a transcendental equation for determining the solutions

$\omega = \omega_k$. In particular, it implies that the distance between neighboring solutions $\omega_k - \omega_{k-1} = [\text{Arg}\mu(\omega_{k-1}) - \text{Arg}\mu(\omega_k)]/\tau + 2\pi/\tau = 2\pi/\tau + \mathcal{O}(1/\tau^2)$ is proportional to $1/\tau$ and the curve $\delta(\omega)$ is filled densely with equally spaced roots as $\tau \rightarrow \infty$.

For illustration, consider the simple case of a one-dimensional complex map with $A, B \in \mathbb{C}$ with $|A| < 1$. In this case we can explicitly calculate the pseudocontinuous spectrum $\delta(\omega) = \ln(|rB|/|A - e^{i\omega}|)$, which is depicted in Fig. 1(a). For $r < (1 - |A|)/|B|$ all the eigenvalues approach $|z| = 1$ from the stable side, and for $r > (1 - |A|)/|B|$ there are always weakly unstable eigenvalues. Thus the critical radius is given by $r_0 = (1 - |A|)/|B|$.

Periodic orbit.—Now consider the variational Eq. (2) with A_k and B_k being periodic in k with period T , corresponding to a PO in the SM. We consider the case of large delay, i.e., $\tau \gg T$. Making a Floquet-like ansatz $\xi_k = z^k q_k$, where q_k is T -periodic, we find

$$zq_{k+1} = A_k q_k + re^{i\psi} B_k z^{-\tau} q_{k-n} \quad (4)$$

with $n = \tau \text{mod} T \in \{0, 1, \dots, T-1\}$.

For the strongly unstable spectrum, again suppose there is a solution with $|z| > 1$; then in the limit $\tau \rightarrow \infty$, the term $z^{-\tau}$ vanishes and we find $zq_{k+1} = A_k q_k$. By using the periodicity of q_k , this implies $\det[z^T - \prod_{k=1}^T A_k] = 0$, where z^T is a Floquet multiplier of the system $\xi_{k+1} = A_k \xi_k$ without delay. Hence, if z^T is a Floquet multiplier of the equation without delay, with $|z| > 1$, then in the limit $\tau \rightarrow \infty$ it is also a solution of Eq. (2) and vice versa.

For the pseudocontinuous spectrum, we again make the ansatz $z = (1 + \delta/\tau)e^{i\omega}$. By taking the limit $\tau \rightarrow \infty$, Eq. (4) becomes

$$e^{i\omega} q_{k+1} = A_k q_k + re^{-\delta} e^{i(\psi-\phi)} B_k q_{k-n} \quad (5)$$

with $\phi = \omega\tau$. Thus one has to solve

$$[e^{i\omega} \bar{J} + \bar{A} + \mu \bar{B}] \bar{q} = 0, \quad (6)$$

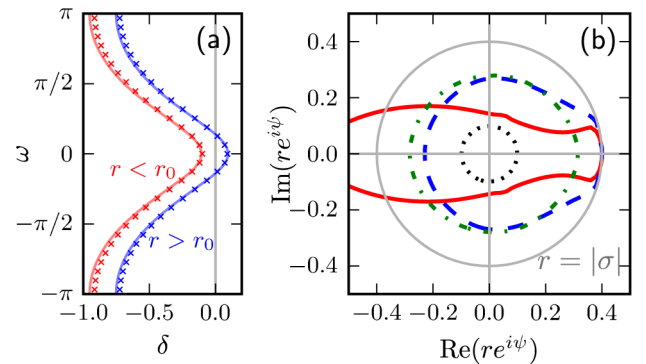


FIG. 1 (color online). (a) Pseudocontinuous spectrum $\delta(\omega)$ (lines) and location of the exact roots (crosses) for a one-dimensional complex map for $r = 3.3 > r_0 = 3$ and $r = 2.7 < r_0 = 3$. Parameters: $A = 0.4$, $B = 0.2$, $\psi = 0$, and $\tau = 30$. (b) Contour line $\lambda_{\max} = 0$ of the MSF for coupled semiconductor lasers according to Eq. (8) for delay times $\tau = 1$ (solid), 8 (dashed), 20 (dash-dotted), and 1000 (dotted).

where $\mu = re^{-\delta}e^{i(\psi-\phi)}$ and $\vec{q} = (q_1, \dots, q_T)$. The matrices \vec{J} , \vec{A} , and \vec{B} follow from Eq. (5), taking into account the periodicity of A_k , B_k , and q_k , e.g., $\vec{A} = \text{diag}\{A_1, \dots, A_T\}$. Taking the determinant of the entire matrix in Eq. (6) results in a polynomial in $\mu = re^{-\delta}e^{i(\psi-\phi)}$ (of maximum order Td). Again, the roots μ are functions of ω , and we can calculate the branches $\delta(\omega) = -\ln|\mu(\omega)| + \ln r$, where ψ and ϕ drop out. As in the case of FPs, one can show that the function $|\mu(\omega)|$ is bounded: $0 < \mu_0 \leq |\mu(\omega)| \leq \mu_1$ unless the instantaneous system has a Floquet multiplier z with $|z| = 1$. Note that, for the FP case as well as for the PO case, one can show that the discussed strongly unstable and pseudocontinuous spectrum constitutes the entire spectrum.

We have found the same structure of the MSF for a PO in the SM: The MSF is rotationally symmetric about the origin in the complex plane. If without feedback ($r = 0$) the MSF is positive, then it is a positive constant in the limit of large delay. Otherwise, it is a monotonically increasing function of r , and it changes sign at a critical radius r_0 .

Chaotic dynamics.—Every chaotic attractor embeds an infinite number of unstable periodic orbits (UPOs). It is well known that the characteristic properties of the chaotic system can be described in terms of these UPOs. One of the most important examples is the natural measure of the chaotic attractor which is concentrated at the UPOs and can be expressed by the orbit's Floquet multipliers [12].

Lyapunov exponents arising from variational equations such as Eq. (2) have been discussed in the framework of PO theory [13], too. In particular, it has been shown [14] that a chaotic attractor in an invariant manifold loses its transversal stability in a blowout bifurcation when the transversely unstable orbits outweigh the transversely stable orbits. To be precise, we divide the orbits into these two groups and define [14] the transversely stable weight Λ_T^s and the unstable weight Λ_T^u as

$$\Lambda_T^{u,s} = \sum_{j=1}^{N_T^{u,s}} \mu_T(j) \lambda_T(j), \quad (7)$$

where the sum goes over all N_T^u transversely unstable and N_T^s transversely stable orbits with period T (or factors of T), respectively. Here, $\mu_T(j)$ is the weight of the j th orbit, corresponding to the natural measure of a typical trajectory in the neighborhood of the j th orbit, and $\lambda_T(j)$ is the transversal Lyapunov exponent of this j th orbit. The weight of a PO is inversely proportional to the product of its unstable Floquet multipliers [12]. The attractor is transversely unstable if and only if in the limit of large T we have $\Lambda_T^u > |\Lambda_T^s|$. We now draw the connection to the scaling theory for large τ . Starting from $r = 0$ (no feedback), the transversal Lyapunov exponents $\lambda_T(j)$ of each orbit can increase only with increasing r , as shown above, and the weights $\mu_T(j)$ are not changed. In particular, for large enough r any orbit becomes transversely unstable: Either it is already unstable for $r = 0$ and thus remains unstable, or the pseudocontinuous spectrum goes to zero and for large

r it does so from the unstable side. Thus there exists a minimum radius r_0 for which the condition $\Lambda_T^u > |\Lambda_T^s|$ on the weights is fulfilled. Note that since we consider the limit $\tau \rightarrow \infty$ we can evaluate the condition at arbitrarily large T . Thus, in summary, the MSF for chaotic dynamics has the same structure as for FPs and POs [the rotation symmetry follows from the rotation symmetry of each $\lambda_T(j)$].

Let us now discuss what the structure of the MSF means for the synchronizability of networks. We can classify networks into three types depending on the magnitude of the largest transversal eigenvalues γ_{\max} in relation to the magnitude of the row sum σ : (a) $|\gamma_{\max}| < |\sigma|$, (b) $|\gamma_{\max}| = |\sigma|$, and (c) $|\gamma_{\max}| > |\sigma|$.

As we have shown above, for stable synchronization it is necessary that $|\gamma_{\max}| < r_0$. If $|\gamma_{\max}| > r_0$, the synchronization is not stable. Since σ is the eigenvalue of the coupling matrix associated with the synchronous mode, the MSF $\lambda_{\max}(\sigma)$ describes the local stability within the SM, i.e., $\lambda_{\max}(\sigma) > 0$ for chaotic dynamics in the SM and $\lambda_{\max}(\sigma) < 0$ for FPs or POs. This implies that $|\sigma| > r_0$ in the first case and $|\sigma| < r_0$ in the latter case. In other words, the row sum σ gives an estimate of the critical radius r_0 . In particular, it allows us to give a complete classification (Table I). In networks of type (a) and (b) synchronization on a FP or a PO (stable within the SM) is always stable. For type (c) this dynamics may be stable or not depending on the particular network topology (value of $|\gamma_{\max}|$) and the dynamics in the SM (value of r_0). On the other hand, chaos synchronization is always unstable in networks of type (b) and (c), and it may be stable or not in networks of type (a) again depending on the particular network and the dynamics.

Note that, in contrast to maps, autonomous flows with a stable PO in the SM always have $r_0 = |\sigma|$, due to the PO's Goldstone mode. Thus for this case synchronization will be unstable for type (c) networks. For type (b) networks the stability of the synchronized solution in this case undergoes a destabilizing bifurcation.

We now list some examples for the three types of networks. The classification follows from the eigenvalue structure of the corresponding coupling matrices g_{ij} . Mean field coupled systems are of type (a), and networks with only inhibitory or only excitatory connections are (up to the row sum factor) stochastic matrices and are thus of type (a) or (b). Rings of unidirectionally coupled elements and two bidirectionally coupled elements are of type (b), and hence these systems never exhibit chaos synchronization.

Another conclusion we can draw from the structure of the MSF confirms the conjecture stated in Ref. [10]: Networks with $\sigma = 0$ are of type (c), and thus chaos synchronization is always unstable.

Concerning the impact of noise on the delay-coupled network [15], for the case of FPs and POs stable synchronization will be robust to small noise strength. On the other hand, for the chaotic case there may exist another radius $r_b < r_0$, where the first UPO in the attractor loses its transverse stability and the attractor undergoes a bubbling

TABLE I. Stability of synchronized solutions for the three types of networks.

	Chaotic dynamics in the SM ($r_0 < \sigma $)	PO or FP in the SM ($ \sigma < r_0$)
(a) $ \gamma_{\max} < \sigma $	Synchr. stable if $ \gamma_{\max} < r_0$	Synchr. stable
(b) $ \gamma_{\max} = \sigma $	Synchr. unstable	Synchr. stable
(c) $ \gamma_{\max} > \sigma $	Synchr. unstable	Synchr. stable if $ \gamma_{\max} < r_0$

bifurcation [16,17]. Then any network with $r_b < |\gamma_{\max}| < r_0$ will exhibit bubbling in the presence of small noise (or parameter mismatch), while any network with $|\gamma_{\max}| < r_b$ will show stable synchronization, even in the presence of small noise. For large noise strength, the linear theory cannot make predictions.

Example.—As an example we consider a network of optically coupled semiconductor lasers modeled by dimensionless equations of the Lang-Kobayashi [18] type:

$$\dot{E}^l(t) = \frac{1}{2}(1 + i\alpha)n^l(t)E^l(t) + \sum_{j=1}^N g_{lj}E^j(t - \tau), \quad (8)$$

$$T\dot{n}^l(t) = p - n^l(t) - [1 + n^l(t)]|E^l(t)|^2,$$

where E^l and n^l are the complex electric field amplitude and the inversion of the l th laser, respectively. For our example, we choose the parameters as follows: ratio between carrier and photon lifetime $T = 200$, injection current $p = 10$, and α factor $\alpha = 4$. This results in a relaxation oscillation period $T_{RO} \approx 28$. Figure 1(b) shows the $\lambda_{\max} = 0$ contour line of the corresponding MSF for networks with $\sigma = 0.4$ for different values of the delay time τ . For $\tau = 20$ (order of T_{RO}) the contour line starts to become circular. For $\tau \geq 3T_{RO}$ the shape of the MSF perfectly resembles our predictions. In this case we find $r_0 < \sigma = 0.4$; i.e., the dynamics is chaotic. For $\tau = 1$ and 10 the limit of large delay is not satisfied; hence, the MSF does not exhibit the rotation symmetry. Note that for these values of the delay time the dynamics is a PO, and since the system is a flow, the stability boundary reaches its maximum real value at $re^{i\psi} = |\sigma|$.

Conclusion.—We have shown that the MSF has a simple universal structure in the limit of large delay: It is rotationally symmetric around the origin and either positive and constant (if it is positive at the origin) or monotonically increasing and becoming positive at a critical radius r_0 . This structure allows us to confirm a recent conjecture [10] about synchronizability of chaotic elements. Furthermore, we classify networks into three types depending on the magnitude of the maximum transversal eigenvalue of the coupling matrix in relation to the magnitude of the row sum. Importantly, this classification allows us to predict the synchronizability of general networks of identical units with strongly delayed connections based solely on the modulus of the eigenvalues and the type of synchronized dynamics. In many cases this prediction is possible even without computing the critical radius r_0 (as shown in Table I). Although our results describe the properties of coupled systems in the limit of large delay, practically they are expected to hold when the delay is 2 or 3 times larger

than the characteristic time scale of the underlying system without delay. This is confirmed by our example as well as the results of Ref. [11].

This work was supported by DFG (Sfb 555 and Research Center MATHEON under Project No. D21). We thank W. Kinzel for useful comments.

*schoell@physik.tu-berlin.de

- [1] A. S. Pikovsky *et al.*, *Synchronization, A Universal Concept in Nonlinear Sciences* (Cambridge University Press, Cambridge, England, 2001).
- [2] K. M. Cuomo and A. V. Oppenheim, *Phys. Rev. Lett.* **71**, 65 (1993); S. Boccaletti *et al.*, *Phys. Rep.* **366**, 1 (2002); I. Kanter, E. Kopelowitz, and W. Kinzel, *Phys. Rev. Lett.* **101**, 084102 (2008).
- [3] W. Singer, *Neuron* **24**, 49 (1999).
- [4] P. A. Tass *et al.*, *Phys. Rev. Lett.* **81**, 3291 (1998).
- [5] H. J. Wünsche *et al.*, *Phys. Rev. Lett.* **94**, 163901 (2005); T. W. Carr *et al.*, *SIAM J. Appl. Dyn. Syst.* **5**, 699 (2006); H. Erzgräber *et al.*, *SIAM J. Appl. Dyn. Syst.* **5**, 30 (2006); I. Fischer *et al.*, *Phys. Rev. Lett.* **97**, 123902 (2006); O. D’Huys *et al.*, *Chaos* **18**, 037116 (2008).
- [6] E. Rossoni *et al.*, *Phys. Rev. E* **71**, 061904 (2005); C. Masoller, M. C. Torrent, and J. Garcia-Ojalvo, *Phys. Rev. E* **78**, 041907 (2008).
- [7] A. Takamatsu *et al.*, *Phys. Rev. Lett.* **87**, 078102 (2001).
- [8] L. M. Pecora and T. L. Carroll, *Phys. Rev. Lett.* **80**, 2109 (1998).
- [9] M. Dhamala, V. K. Jirsa, and M. Ding, *Phys. Rev. Lett.* **92**, 074104 (2004); C.-U. Choe *et al.*, *Phys. Rev. E* **81**, 025205 (R) (2010).
- [10] W. Kinzel *et al.*, *Phys. Rev. E* **79**, 056207 (2009).
- [11] J. D. Farmer, *Physica (Amsterdam)* **4D**, 366 (1982); G. Giacomelli and A. Politi, *Phys. Rev. Lett.* **76**, 2686 (1996); B. Mensour and A. Longtin, *Physica (Amsterdam)* **113D**, 1 (1998); M. Wolfrum and S. Yanchuk, *Phys. Rev. Lett.* **96**, 220201 (2006); S. Yanchuk *et al.*, *Phys. Rev. E* **74**, 026201 (2006); S. Yanchuk and P. Perlikowski, *Phys. Rev. E* **79**, 046221 (2009).
- [12] C. Grebogi, E. Ott, and J. A. Yorke, *Phys. Rev. A* **37**, 1711 (1988); Y. C. Lai, Y. Nagai, and C. Grebogi, *Phys. Rev. Lett.* **79**, 649 (1997).
- [13] P. Cvitanović, *Physica (Amsterdam)* **83D**, 109 (1995).
- [14] Y. Nagai and Y. C. Lai, *Phys. Rev. E* **56**, 4031 (1997).
- [15] D. Hunt, G. Korniss, and B. K. Szymanski, *Phys. Rev. Lett.* **105**, 068701 (2010).
- [16] E. Ott and J. C. Sommerer, *Phys. Lett. A* **188**, 39 (1994).
- [17] P. Ashwin *et al.*, *Nonlinearity* **9**, 703 (1996).
- [18] R. Lang and K. Kobayashi, *IEEE J. Quantum Electron.* **16**, 347 (1980).