



Domain Wall in a Chiral p -Wave Superconductor: A Pathway for Electrical Current

I. Serban, B. Béri, A. R. Akhmerov, and C. W. J. Beenakker

Instituut-Lorentz, Universiteit Leiden, P.O. Box 9506, 2300 RA Leiden, The Netherlands

(Received 19 December 2009; published 5 April 2010)

Superconductors with $p_x \pm ip_y$ pairing symmetry are characterized by chiral edge states, but these are difficult to detect in equilibrium since the resulting magnetic field is screened by the Meissner effect. Nonequilibrium detection is hindered by the fact that the edge excitations are Majorana fermions, which cannot transport charge near the Fermi level. Here we show that the boundary between $p_x + ip_y$ and $p_x - ip_y$ domains forms a one-way channel for electrical charge. We derive a product rule for the domain wall conductance, which allows us to cancel the effect of a tunnel barrier between metal electrodes and the superconductor and provides a unique signature of topological superconductors in the chiral p -wave symmetry class.

DOI: 10.1103/PhysRevLett.104.147001

PACS numbers: 74.20.Rp, 74.25.fc, 74.45.+c, 74.78.Na

Chiral edge states are gapless excitations at the boundary of a two-dimensional system that can propagate in only a single direction. They appear prominently in the quantum Hall effect [1,2]: The absence of backscattering in a chiral edge state explains the robustness of the quantization of the Hall conductance against disorder. Analogous phenomena in a superconductor with broken time-reversal symmetry are known as the spin quantum Hall effect [3–5] and the thermal quantum Hall effect [6,7], in reference to the transport of spin and heat along chiral edge states.

Unlike the original (electrical) quantum Hall effect, both these superconducting analogues have eluded observation, which is understandable since it is so much more difficult to measure spin and heat transport than electrical transport. Proposals to detect chiral edge states in a superconductor through their equilibrium magnetization are hindered by screening currents in the bulk, which cancel the magnetic field (Meissner effect) [8–11].

Here we show that the boundary between domains of opposite chirality ($p_x \pm ip_y$) in a chiral p -wave superconductor forms a one-way channel for electrical charge, in much the same way as edge states in the quantum Hall effect. This is not an immediate consequence of chirality: Since the charge of excitations in a superconductor is only conserved modulo the Cooper pair charge of $2e$, the absence of backscattering in a superconducting chiral edge state does not imply conservation of the electrical current. Indeed, one chiral edge state within a single domain has zero conductance due to electron-hole symmetry. We calculate the conductance of the domain wall, measured between a pair of metal contacts at the two ends (see Fig. 1), and find that it is nonzero, regardless of the separation of the contacts.

Our analysis is generally applicable to so-called class-D topological superconductors [12,13], characterized by the presence of electron-hole symmetry and the absence of both time-reversal and spin-rotation symmetry. It can be applied to the various realizations of chiral p -wave super-

conductors proposed in the literature (strontium ruthenate [11], superfluids of fermionic cold atoms [14,15], and ferromagnet-superconductor heterostructures [16,17]).

We start from the Bogoliubov–de Gennes equation,

$$\begin{pmatrix} H_0 - E_F & \Delta \\ \Delta^\dagger & -H_0^* + E_F \end{pmatrix} \begin{pmatrix} u \\ v \end{pmatrix} = E \begin{pmatrix} u \\ v \end{pmatrix}, \quad (1)$$

for coupled electron and hole excitations $u(\mathbf{r})$, $v(\mathbf{r})$ at energy E above the Fermi level E_F . The single-particle Hamiltonian is $H_0 = (\mathbf{p} + e\mathbf{A})^2/2m + U$, with $\mathbf{p} = -i\hbar\partial/\partial\mathbf{r}$ the momentum, $\mathbf{A}(\mathbf{r})$ the vector potential, and $U(\mathbf{r})$ the electrostatic potential. The dynamics is two-dimensional, so $\mathbf{r} = (x, y)$, $\mathbf{p} = (p_x, p_y)$. The pair potential Δ has the spin-polarized-triplet p -wave form [18]

$$\Delta = (2p_F)^{-1}(\boldsymbol{\eta} \cdot \mathbf{p} + \mathbf{p} \cdot \boldsymbol{\eta}), \quad (2)$$

in terms of a two-component order parameter $\boldsymbol{\eta} = (\eta_x, \eta_y)$. The two chiralities $p_x \pm ip_y$ correspond to $\boldsymbol{\eta}_\pm = \Delta_0 e^{i\phi}(1, \pm i)$, with Δ_0 the excitation gap and ϕ the superconducting phase. Since $\Delta^\dagger = -\Delta^*$, a solution (u, v) of Eq. (1) at energy E is related to another solution (v^*, u^*) at energy $-E$ (electron-hole symmetry). A domain wall along $x = 0$, with a phase difference ϕ between the domains, has order parameter [19,20]

$$\eta_x(x) = \Delta_0[e^{-i\phi/2} \cos\chi(x) + e^{i\phi/2} \sin\chi(x)], \quad (3a)$$

$$\eta_y(x) = i\Delta_0[e^{-i\phi/2} \cos\chi(x) - e^{i\phi/2} \sin\chi(x)], \quad (3b)$$

The function $\chi(x)$ increases from 0 to $\pi/2$ over a coherence length $\xi_0 = \hbar v_F/\Delta_0$ around $x = 0$.

At energies E below Δ_0 the excitations are chiral edge states Ψ_L and Ψ_R circulating in opposite directions in the two domains [8,21–23]. (See Fig. 1.) At the domain wall the two states mix, so that an excitation entering the domain wall in the state Ψ_L^{in} or Ψ_R^{in} can exit in either of the two states Ψ_L^{out} and Ψ_R^{out} . We first analyze this edge state scattering problem between contacts N_L and N_R , and then introduce the contacts N_1 and N_2 to the domain wall.

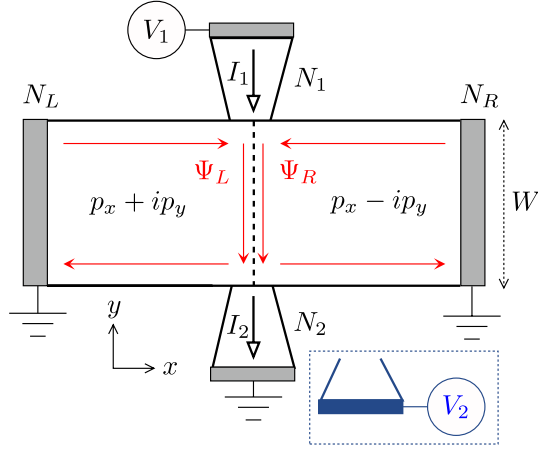


FIG. 1 (color online). Superconducting strip divided by a domain wall (dashed line, length W) into domains with $p_x \pm ip_y$ symmetry. The edge states Ψ_L, Ψ_R of opposite chirality in the two domains are indicated by red arrows. These Majorana modes can carry heat current between contacts N_L and N_R , but no electrical current. A normal-metal electrode N_1 injects charge into the domain wall, which is detected as an electrical current I_2 at the other end N_2 . In an alternative measurement configuration (indicated in blue), contact N_2 measures a voltage V_2 without drawing a current.

The edge state excitations have fermionic annihilation operators $\boldsymbol{\gamma}(E) = (\gamma_L(E), \gamma_R(E))$, which satisfy the electron-hole symmetry relation $\boldsymbol{\gamma}(E) = \boldsymbol{\gamma}^\dagger(-E)$. At zero energy one has $\boldsymbol{\gamma} = \boldsymbol{\gamma}^\dagger$, so these are Majorana fermions [18]. The unitary scattering matrix $S(E)$ relates incoming and outgoing operators, $\boldsymbol{\gamma}^{\text{out}}(E) = S(E)\boldsymbol{\gamma}^{\text{in}}(E)$. Electron-hole symmetry for both $\boldsymbol{\gamma}^{\text{in}}$ and $\boldsymbol{\gamma}^{\text{out}}$ requires $S(E)\boldsymbol{\gamma}^{\text{in}}(E) = \boldsymbol{\gamma}^{\text{in}}(E)S^\dagger(-E)$, hence $S(E) = S^*(-E)$. The zero-energy scattering matrix $S(0) \equiv S_{\text{dw}}$ of the domain wall is therefore a real unitary, or orthogonal, matrix. We may parametrize it by

$$S_{\text{dw}} = \begin{pmatrix} \cos\psi & \sin\psi \\ (-1)^{p+1} \sin\psi & (-1)^p \cos\psi \end{pmatrix} = \sigma_z^p e^{i\psi\sigma_y}, \quad (4)$$

in terms of a mixing angle ψ and a parity index $p \in \{0, 1\}$.

The mixing angle $\psi = k_y W$ is determined by the phase accumulated by the pair of chiral Majorana modes, as they propagate with wave number $\pm k_y$ along the domain wall of length W . The dispersion relation $E(k_y)$ of the Majorana modes was calculated in Ref. [22], for a step function order parameter at $x = 0$, including also the effect of a tunnel barrier $U = U_0\delta(x)$ (tunnel probability D , zero magnetic field). By equating $E(k_y) = 0$ and solving for k_y we obtain the mixing angle

$$\psi = k_F W \sqrt{D} \cos(\phi/2). \quad (5)$$

The mixing angle can in principle be measured through thermal transport between contacts N_L and N_R , since the heat current through the domain wall is $\propto \sin^2\psi$. In what follows we consider instead a purely electrical measure-

ment of transport along the domain wall, that (as we shall see) is independent of the degree of mixing of the Majorana modes (hence independent of the parameters W, D , and ϕ that characterize the domain wall).

The measurement that we propose consists of the injection of electrons from contact N_1 at voltage V_1 (relative to the superconductor) and the detection at contact N_2 . We consider two detection schemes. In the first scheme contact N_2 is kept at the same potential as the superconductor and measures a current I_2 , leading to the nonlocal conductance $G_{12} = I_2/V_1$. In the second scheme contact N_2 is a voltage probe drawing no net current and measuring a voltage V_2 . The ratio $R_{12} = V_2/I_1$, with I_1 the current entering the superconductor through contact N_1 , is the nonlocal resistance. The two nonlocal quantities are related by $R_{12} = G_{12}/G_1G_2$, with $G_i = |I_i/V_i|$ the contact conductance of electrode N_i (measured with the other contact grounded).

We take the zero-temperature and zero-voltage limit, so that we can use the zero-energy scattering matrix to calculate the various conductances. The scattering problem at contact N_1 involves, in addition to the Majorana operators $\boldsymbol{\gamma} = (\gamma_L, \gamma_R)$, the electron and hole annihilation operators a_n and b_n in mode $n = 1, 2, \dots, N$. These are related by $b_n(E) = a_n^\dagger(-E)$. The even and odd combinations γ_n^\pm , defined by

$$\begin{pmatrix} \gamma_n^+ \\ \gamma_n^- \end{pmatrix} = u \begin{pmatrix} a_n \\ b_n \end{pmatrix}, \quad u = \sqrt{\frac{1}{2}} \begin{pmatrix} 1 & 1 \\ -i & i \end{pmatrix}, \quad (6)$$

satisfy the same electron-hole symmetry relation as γ_L, γ_R , and therefore represent Majorana fermions at $E = 0$. We denote $\boldsymbol{\gamma}_n = (\gamma_n^+, \gamma_n^-)$ and collect these operators in the vector $\boldsymbol{\Gamma} = (\boldsymbol{\gamma}_1, \boldsymbol{\gamma}_2, \dots, \boldsymbol{\gamma}_N)$. The scattering matrix S_1 of contact N_1 relates incoming and outgoing operators,

$$\begin{pmatrix} \boldsymbol{\gamma} \\ \boldsymbol{\Gamma} \end{pmatrix}_{\text{out}} = S_1 \begin{pmatrix} \boldsymbol{\gamma} \\ \boldsymbol{\Gamma} \end{pmatrix}_{\text{in}}, \quad S_1 = \begin{pmatrix} r_1 & t_1 \\ t_1' & r_1' \end{pmatrix}. \quad (7)$$

Electron-hole symmetry implies that S_1 is $(2N + 2) \times (2N + 2)$ orthogonal matrix at zero energy. Similarly, the zero-energy scattering matrix S_2 of contact N_2 is a $(2N' + 2) \times (2N' + 2)$ orthogonal matrix. (The number of modes is N, N' in contacts N_1, N_2 respectively.)

The $2N' \times 2N$ transmission matrix

$$t_{21} = t_2' S_{\text{dw}} t_1 = t_2' \sigma_z^p e^{i\psi\sigma_y} t_1 \quad (8)$$

from contact N_1 to N_2 is the product of the $2 \times 2N$ submatrix t_1 of S_1 (transmission from N_1 to the domain wall), the 2×2 scattering matrix S_{dw} (transmission along the domain wall), and the $2N' \times 2$ submatrix t_2' of S_2 (transmission from the domain wall to N_2).

The total transmission probability T_{ee} , summed over all modes, of an electron at contact N_1 to an electron at contact N_2 is given by

$$\begin{aligned} T_{ee} &= \frac{1}{4} \text{Tr} \mathcal{U}^\dagger t_{21}^\dagger \mathcal{U} (1 + \Sigma_z) \mathcal{U}^\dagger t_{21} \mathcal{U} (1 + \Sigma_z) \\ &= \frac{1}{4} \text{Tr} t_{21}^\dagger (1 - \Sigma_y) t_{21} (1 - \Sigma_y), \end{aligned} \quad (9)$$

where we have defined the direct sums $\mathcal{U} = u \oplus u \cdots \oplus u$, $\Sigma_i = \sigma_i \oplus \sigma_i \cdots \oplus \sigma_i$ and we have used that $u\sigma_z u^\dagger = -\sigma_y$. Similarly, the total electron-to-hole transmission probability T_{he} reads

$$T_{he} = \frac{1}{4} \text{Tr} t_{21}^\dagger (1 + \Sigma_y) t_{21} (1 - \Sigma_y). \quad (10)$$

(The quantity T_{he} describes so-called crossed Andreev reflection.)

Since $I_2 = (e^2/h)V_1(T_{ee} - T_{he})$, the nonlocal conductance takes the form

$$G_{12} = (e^2/h) \frac{1}{2} \text{Tr} t_{21}^T \Sigma_y t_{21} \Sigma_y. \quad (11)$$

We have used that $t_{21}^\dagger = t_{21}^T$ and $\text{Tr} t_{21}^T \Sigma_y t_{21} = 0$ (being the trace of an antisymmetric matrix). The nonlocal resistance can be written in a similar form upon division by the contact conductances,

$$R_{12} = \frac{G_{12}}{G_1 G_2}, \quad G_i = (e^2/h) \frac{1}{2} \text{Tr} (1 - \Sigma_y r_i^T \Sigma_y r_i). \quad (12)$$

We will henceforth set e^2/h to unity in most equations.

Substitution of Eq. (8) into Eq. (11) gives the conductance

$$G_{12} = \frac{1}{2} \text{Tr} \mathcal{T}_1 S_{dw}^T \mathcal{T}_2 S_{dw}, \quad (13)$$

in terms of the 2×2 matrices $\mathcal{T}_1 = t_1 \Sigma_y t_1^T$, $\mathcal{T}_2 = t_2^T \Sigma_y t_2$. We now use the identity

$$\text{Tr} A_1 A_2 = \frac{1}{2} (\text{Tr} A_1 \sigma_y) (\text{Tr} A_2 \sigma_y), \quad (14)$$

valid for any pair of 2×2 antisymmetric matrices A_1, A_2 . Taking $A_1 = \mathcal{T}_1$, $A_2 = S_{dw}^T \mathcal{T}_2 S_{dw}$ we arrive at

$$G_{12} = (-1)^p \alpha_1 \alpha_2, \quad \alpha_i = \frac{1}{2} \text{Tr} \mathcal{T}_i \sigma_y, \quad (15a)$$

$$R_{12} = (-1)^p \beta_1 \beta_2, \quad \beta_i = \alpha_i / G_i, \quad (15b)$$

since $\text{Tr} S_{dw}^T \mathcal{T}_2 S_{dw} \sigma_y = (-1)^p \text{Tr} \mathcal{T}_2 \sigma_y$ in view of Eq. (4).

Equation (15) expresses the nonlocal conductance and resistance in terms of the scattering matrices S_1, S_2 of the two contacts N_1, N_2 . The scattering matrix S_{dw} of the domain wall enters only through the parity index p , and not through the mixing angle ψ . That the transferred charge depends only on a parity index is a generic feature of a single-mode scattering problem with class D symmetry [24–28]. Quite generally, p counts the number (modulo 2) of zero-energy bound states, which in our case would be trapped in vortices in the domain wall.

A measurement of the domain wall conductance would have several characteristic features: Most prominently, the conductance is zero unless both contacts N_1 and N_2 are at the domain wall; if at least one contact is moved away from the domain wall, the conductance vanishes because a single Majorana edge mode cannot carry an electrical current at the Fermi level. This feature would distinguish chiral p -wave superconductors (symmetry class D) from chiral d -wave superconductors (symmetry class C), where

the Majorana edge modes come in pairs and can carry a current. The chirality itself can be detected by interchanging the injecting and detecting contacts: only one choice can give a nonzero conductance.

To illustrate these features in a model calculation, we consider the case of two single-mode contacts ($N = N' = 1$). The superconducting order parameter will be suppressed for energetic reasons when the domain wall approaches the boundary, so that the contact area can be modeled by a disordered normal-metal region confined by superconducting boundaries. Scattering in such an ‘‘Andreev billiard’’ is described statistically by random contact scattering matrices S_1 and S_2 , drawn independently with a uniform distribution from the ensemble of 4×4 orthogonal matrices. In the context of random-matrix theory, uniformly distributed ensembles of unitary matrices are called ‘‘circular’’, so our ensemble could be called the ‘‘circular real ensemble’’ (CRE)—to distinguish it from the usual circular unitary ensemble (CUE) of complex unitary matrices [29].

Using the expression for the uniform measure on the orthogonal group [27,30], we obtain the distributions of the parameters α_i and β_i characterizing contact N_i :

$$P(\alpha) = 1 - |\alpha|, \quad P(\beta) = (1 + |\beta|)^{-2}, \quad |\alpha|, |\beta| \leq 1. \quad (16)$$

The distribution of the nonlocal conductance $G_{12} = (-1)^p \alpha_1 \alpha_2$, plotted in Fig. 2, then follows from

$$P(G_{12}) = \int_{-1}^1 d\alpha_1 \int_{-1}^1 d\alpha_2 \delta(G_{12} - \alpha_1 \alpha_2) P(\alpha_1) P(\alpha_2).$$

The distribution of the nonlocal resistance $R_{12} = (-1)^p \beta_1 \beta_2$ follows similarly and as we can see in Fig. 2 it lies close to $P(G_{12})$.

The difference between the two quantities G_{12} and R_{12} becomes important if the contacts between the metal and the superconductor contain a tunnel barrier. A tunnel barrier suppresses G_{12} but has no effect on R_{12} . More precisely [30], any series resistance in the single-mode contacts N_1 and N_2 which does not couple electrons and holes drops out of the nonlocal resistance R_{12} . This remarkable fact is again a consequence of the product rule (14), which allows us to factor a series conductance into a product of conductances. A tunnel barrier in contact i then appears as a multiplicative factor in α_i and G_i , and thus drops out of the ratio $\beta_i = \alpha_i / G_i$ determining R_{12} .

To demonstrate the effect of a tunnel barrier (tunnel probability τ), we have calculated the distribution of α using the Poisson kernel of the CRE [31], with the result

$$P(\alpha, \tau) = \frac{\tau^2}{[\tau + (1 - \tau)|\alpha|]^3} - \frac{\tau^2 |\alpha|}{[\tau + (1 - \tau)\alpha^2]^2}. \quad (17)$$

The distribution of β remains given by Eq. (16), independent of τ . The dashed curves in Fig. 2 show how the resulting distribution of the nonlocal conductance becomes

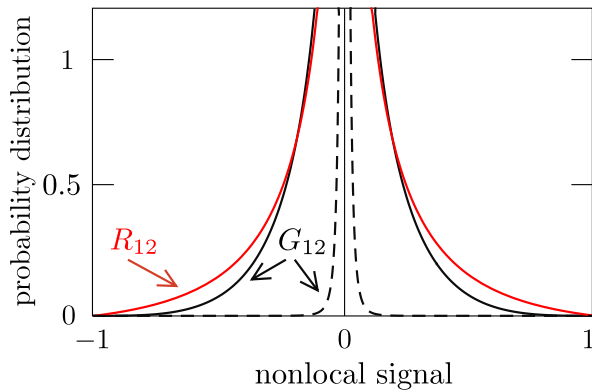


FIG. 2 (color online). Solid curves: probability distributions of the nonlocal conductance G_{12} (in units of e^2/h) and nonlocal resistance R_{12} (in units of h/e^2). These are results for a random distribution of the 4×4 orthogonal scattering matrices S_1 and S_2 . The dashed curve shows the narrowing effect on $P(G_{12})$ of a tunnel barrier in both contacts (tunnel probability $\tau = 0.1$). In contrast, $P(R_{12})$ is not affected by a tunnel barrier.

narrowly peaked around zero for small τ , in contrast to the distribution of the nonlocal resistance.

Among the various candidate systems for chiral p -wave superconductivity, the recent proposal [16] based on the proximity effect in a spin-polarized two-dimensional electron gas seems particularly promising for our purpose. Split-gate quantum point contacts (fabricated with well-established technology) could serve as single-mode injector and detector of electrical current. The chirality of the superconducting domains is determined by the polarity of an insulating magnetic substrate, so the location of the domain wall could be manipulated magnetically. The appearance of a nonlocal signal between the two point contacts would detect the domain wall and the disappearance upon interchange of injector and detector would demonstrate the chirality.

The nonlocal conductance in the spin-polarized two-dimensional electron gas has root-mean-square magnitude $e^2/6h \approx 6.5 \mu\text{S}$, which is small but certainly measurable. In Sr_2RuO_4 the signal can be much larger, because it is multiplied first by the two spin directions and then by the ratio d/c of the thickness d of the sample and the interlayer separation $c = 1.3 \text{ nm}$. (Coupling between the spins and between the layers will somewhat reduce this enhancement factor.) The condition on temperature is only that it should be well below the superconducting transition temperature (1.5 K for Sr_2RuO_4), because there is no dephasing of the edge channels along the domain wall for energies $E \ll \Delta_0$.

As a direction for further research, we note that domains of opposite chirality (of linear dimension $\approx 10 \mu\text{m}$) are formed spontaneously in disordered samples of Sr_2RuO_4 . Since, as we have shown here, domain walls may carry electric current, a network of domain walls contributes to the conductivity and may well play a role in the anomalous (parity violating) current-voltage characteristic reported recently [32].

We thank J. Nilsson for discussions. This research was supported by the Dutch Science Foundation NWO/FOM and by an ERC Advanced Investigator Grant.

- [1] B.I. Halperin, Phys. Rev. B **25**, 2185 (1982).
- [2] M. Büttiker, Phys. Rev. B **38**, 9375 (1988).
- [3] G.E. Volovik and V.M. Yakovenko, J. Phys. Condens. Matter **1**, 5263 (1989).
- [4] T. Senthil, J. B. Marston, and M. P. A. Fisher, Phys. Rev. B **60**, 4245 (1999).
- [5] N. Read and D. Green, Phys. Rev. B **61**, 10267 (2000).
- [6] T. Senthil and M. P. A. Fisher, Phys. Rev. B **61**, 9690 (2000).
- [7] A. Vishwanath, Phys. Rev. Lett. **87**, 217004 (2001).
- [8] M. Matsumoto and M. Sigrist, J. Phys. Soc. Jpn. **68**, 994 (1999).
- [9] H.J. Kwon, V.M. Yakovenko, and K. Sengupta, Synth. Met. **133-134**, 27 (2003).
- [10] J.R. Kirtley, *et al.*, Phys. Rev. B **76**, 014526 (2007).
- [11] C. Kallin and A. J. Berlinsky, J. Phys. Condens. Matter **21**, 164210 (2009).
- [12] A. Altland and M.R. Zirnbauer, Phys. Rev. B **55**, 1142 (1997).
- [13] A. P. Schnyder, S. Ryu, A. Furusaki, and A. W. W. Ludwig, Phys. Rev. B **78**, 195125 (2008).
- [14] S. Tewari, *et al.*, Phys. Rev. Lett. **98**, 010506 (2007).
- [15] M. Sato, Y. Takahashi, and S. Fujimoto, Phys. Rev. Lett. **103**, 020401 (2009).
- [16] J.D. Sau, R.M. Lutchyn, S. Tewari, and S. Das Sarma, Phys. Rev. Lett. **104**, 040502 (2010).
- [17] P. A. Lee, arXiv:0907.2681.
- [18] A. Stern, F. von Oppen, and E. Mariani, Phys. Rev. B **70**, 205338 (2004).
- [19] M. Sigrist and D.F. Agterberg, Prog. Theor. Phys. **102**, 965 (1999).
- [20] A. Bouhon and M. Sigrist, arXiv:0909.3535.
- [21] Yu. S. Barash, A. M. Bobkov, and M. Fogelström, Phys. Rev. B **64**, 214503 (2001).
- [22] H. J. Kwon, K. Sengupta, and V. M. Yakovenko, Eur. Phys. J. B **37**, 349 (2004).
- [23] M. Stone and R. Roy, Phys. Rev. B **69**, 184511 (2004).
- [24] B. Béni, J. N. Kupferschmidt, C. W. J. Beenakker, and P. W. Brouwer, Phys. Rev. B **79**, 024517 (2009).
- [25] L. Fu and C.L. Kane, Phys. Rev. Lett. **102**, 216403 (2009).
- [26] A. R. Akhmerov, J. Nilsson, and C. W. J. Beenakker, Phys. Rev. Lett. **102**, 216404 (2009).
- [27] B. Béni, Phys. Rev. B **79**, 245315 (2009).
- [28] K. T. Law, P. A. Lee, and T. K. Ng, arXiv:0907.1909.
- [29] The name “circular orthogonal ensemble” (COE) might be more appropriate for the ensemble of uniformly distributed orthogonal matrices, but this name is already in use for the ensemble of unitary symmetric matrices.
- [30] For a detailed calculation we refer to the appendices of I. Serban *et al.*, arXiv:0912.3937.
- [31] B. Béni, Phys. Rev. B **79**, 214506 (2009).
- [32] H. Nobukane *et al.*, Solid State Commun. **149**, 1212 (2009).