



Universality of Efficiency at Maximum Power

Massimiliano Esposito* and Katja Lindenberg

*Department of Chemistry and Biochemistry, and Institute for Nonlinear Science University of California, San Diego,
La Jolla, California 92093-0340, USA*

Christian Van den Broeck

Hasselt University, B-3590 Diepenbeek, Belgium

(Received 16 January 2009; revised manuscript received 1 March 2009; published 1 April 2009)

We investigate the efficiency of power generation by thermochemical engines. For strong coupling between the particle and heat flows and in the presence of a left-right symmetry in the system, we demonstrate that the efficiency at maximum power displays universality up to quadratic order in the deviation from equilibrium. A maser model is presented to illustrate our argument.

DOI: 10.1103/PhysRevLett.102.130602

PACS numbers: 05.70.Ln, 05.40.-a

The concept of Carnot efficiency is a cornerstone of thermodynamics. It states that the efficiency of a cyclic (“Carnot”) thermal engine that transforms an amount $Q^{(r)}$ of energy extracted from a heat reservoir at temperature T_r into an amount of work \mathcal{W} is at most $\eta = \mathcal{W}/Q^{(r)} \leq \eta_c = 1 - T_l/T_r$, where T_l is the temperature of a second, colder reservoir. The theoretical implications of this result are momentous, as they lie at the basis of the introduction by Clausius of the entropy as a state function. The practical implications are more limited, since the upper limit η_c (“Carnot efficiency”) is only reached for engines that operate reversibly. As a result, when the efficiency is maximal, the output power is zero. By optimizing the Carnot cycle with respect to power rather than efficiency, Curzon and Ahlborn found that the corresponding efficiency is given by $\eta_{CA} = 1 - \sqrt{T_l/T_r}$ [1]. They obtained this result for a specific model, using in addition the so-called endo-reversible approximation (i.e., neglecting the dissipation in the auxiliary, work producing entity). Subsequently, the validity of this result as an upper bound, as well as its universal character, were the subjects of a long-standing debate. In the regime of linear response, more precisely to linear order in η_c , it was proven that the efficiency at maximum power is indeed limited by the Curzon-Ahlborn efficiency, which in this regime is exactly half of the Carnot efficiency, $\eta \leq \eta_{CA} = \eta_c/2 + O(\eta_c^2)$ [2]. The upper limit is reached for a specific class of models, namely, those for which the heat flux is strongly coupled (i.e., directly proportional) to the work-generating flux. Interestingly, such strong coupling is also a prerequisite for open systems to achieve Carnot efficiency [3,4]. In the nonlinear regime, no general result is known. Efficiencies at maximum power, not only below but also above Curzon-Ahlborn efficiency, have been reported [5–8]. However, it was also found, again in several strong coupling steady-state models [8–10] as well as for an overdamped Brownian particle in a time-dependent harmonic potential [7], that the efficiency at maximum power agrees with η_{CA} up to quadratic order in η_c , i.e., $\eta =$

$\eta_c/2 + \eta_c^2/8 + O(\eta_c^3)$, again raising the question of universality at least to this order. In this Letter we prove that the coefficient $1/8$ is indeed universal for strong coupling models that possess a left-right symmetry. Such a universality is remarkable in view of the fact that most explicit macroscopic relationships, for example, the symmetry of Onsager coefficients, are limited to the regime of linear response. The interest in strong coupling is further motivated by the observation that it can naturally be achieved in nanodevices [11–13]. To complement our theoretical discussion, we also present a detailed study of a thermal nanomachine based on the operation of a maser [14]. It can be solved analytically and illustrates all the above mentioned features. Depending on the value of the Einstein coefficients, the efficiency of the maser at maximum power may be above or below Curzon-Ahlborn. However, when the Einstein coefficients *are equal*, the predicted universality is observed, with the universal value $1/2$ for the linear coefficient, and the quadratic coefficient equal to $1/8$.

In view of the interest of our analysis for small scale systems, and in order to establish the connection with the subsequent discussion of the maser model, we derive the main results on the basis of a stochastic thermodynamic analysis as formulated for a master equation description of a driven open system [15,16]. As we will show in passing, this formalism is fully consistent with macroscopic thermodynamics.

The system under consideration is characterized by a set of states i of energy ϵ_i and number of particles N_i . It exchanges particles and energy with two reservoirs $\nu = l, r$, with inverse temperatures β_ν and chemical potentials μ_ν , respectively. The probability of finding the system in state i at time t is denoted by $p_i(t)$. The state of the system evolves in time according to a stochastic process which is described by the master equation

$$\dot{p}_i(t) = \sum_j W_{ij} p_j(t). \quad (1)$$

As a result of conservation of total probability, the stochastic rate matrix obeys the usual condition $\sum_i W_{ij} = 0$. W_{ij} is the probability per unit time to make a transition to state i from state j . We assume that these transition rates are expressed as sums of independent contributions from the two reservoirs, $W_{ij} = \sum_\nu W_{ij}^{(\nu)}$ ($\nu = l, r$). To reproduce the correct properties at equilibrium, it follows that each of the separate rate matrices $W_{ij}^{(\nu)}$ satisfies detailed balance with respect to the grand canonical distribution at the prevailing temperature and chemical potential,

$$\frac{W_{ji}^{(\nu)}}{W_{ij}^{(\nu)}} = \exp\{\beta_\nu[(\epsilon_i - \epsilon_j) - \mu_\nu(N_i - N_j)]\}. \quad (2)$$

The average energy and matter currents entering the system from the reservoir ν are given by

$$I_E^{(\nu)}(t) = \sum_{i,j} W_{ij}^{(\nu)} p_j(t) (\epsilon_i - \epsilon_j), \quad (3)$$

$$I_M^{(\nu)}(t) = \sum_{i,j} W_{ij}^{(\nu)} p_j(t) (N_i - N_j). \quad (4)$$

The rate of change of the total energy of the system and the (chemical) work per unit time on the system read

$$\dot{\mathcal{E}}(t) = \sum_i \dot{p}_i(t) \epsilon_i = \sum_\nu I_E^{(\nu)}(t), \quad \dot{\mathcal{W}}(t) = \sum_\nu \mu_\nu I_M^{(\nu)}(t). \quad (5)$$

The corresponding total average heat flow follows from energy conservation, $\dot{\mathcal{Q}}(t) = \sum_\nu \dot{\mathcal{Q}}^{(\nu)}(t) = \dot{\mathcal{E}}(t) - \dot{\mathcal{W}}(t)$. In particular, the (average) heat flow from the reservoir ν into the system is given by

$$\dot{\mathcal{Q}}^{(\nu)}(t) = I_E^{(\nu)}(t) - \mu_\nu I_M^{(\nu)}(t). \quad (6)$$

The entropy of the system is taken to be the usual system entropy $S(t) = -\sum_m p_m(t) \ln p_m(t)$ (Boltzmann's constant $k_B = 1$). Using the master equation (1), one easily verifies that the rate of change of this entropy can be written in the form of a balance equation, namely, $\dot{S}(t) = \dot{S}_i(t) + \dot{S}_e(t)$. Here, $\dot{S}_i(t)$ is the non-negative total entropy production for the physical processes represented by the master equation,

$$\dot{S}_i(t) = \sum_{i,j,\nu} W_{ij}^{(\nu)} p_j(t) \ln \frac{W_{ij}^{(\nu)} p_j(t)}{W_{ji}^{(\nu)} p_i(t)} \geq 0. \quad (7)$$

Using Eq. (2), one verifies that the entropy flow into the system is given by the familiar thermodynamic expression in terms of the heat fluxes, $\dot{S}_e(t) = \sum_\nu \dot{\mathcal{Q}}^{(\nu)}(t)/T_\nu$.

We focus on the case of a nonequilibrium steady state. From $\dot{S} = 0$ we have that $\dot{S}_i = -\dot{S}_e$. Also, current conservation at steady state implies that $\sum_\nu I_E^{(\nu)} = \sum_\nu I_M^{(\nu)} = 0$. As a result, the entropy production can now be written in the traditional bilinear force-flux form [17]

$$\dot{S}_i = \mathcal{F}_E I_E^{(r)} + \mathcal{F}_M I_M^{(r)} \geq 0, \quad (8)$$

with the standard expressions for the thermodynamic forces,

$$\mathcal{F}_E = \frac{1}{T_l} - \frac{1}{T_r}, \quad \mathcal{F}_M = \left(-\frac{\mu_l}{T_l}\right) - \left(-\frac{\mu_r}{T_r}\right). \quad (9)$$

We are interested in the operation of the device as a heat engine that carries particles uphill in the chemical potential, driven by a heat current from the hot to the cold reservoir. With no loss of generality, we henceforth assume that $T_r > T_l$ and $\mu_r < \mu_l$. As mentioned before, we focus on the power generated by the device, which, due to current conservation in the steady state, reads:

$$\mathcal{P} = -\dot{\mathcal{W}} = -(\mu_r - \mu_l) I_M^{(r)}. \quad (10)$$

The resulting efficiency of producing chemical work from the heat pumped out of the hot reservoir r is [see Eq. (6)]

$$\eta = \frac{-\mathcal{W}}{\mathcal{Q}^{(r)}} = \frac{-\dot{\mathcal{W}}}{\dot{\mathcal{Q}}^{(r)}} = \frac{\mu_r - \mu_l}{\mu_r - I_E^{(r)}/I_M^{(r)}}. \quad (11)$$

The above formalism can be further simplified for the case of *strong coupling* between the energy and matter flux, defined as

$$I_E^{(r)} = \varepsilon I_M^{(r)} \equiv \varepsilon I. \quad (12)$$

This condition implies that energy is exclusively transported by particles of a given energy ε . Such a selection is quite natural in quantum nanodevices such as the maser [14] (see also below), and in thermoelectrical nanodevices [12], but it can also occur in the classical context, for example, for Kramers' escape, where the particles that cross the barrier have precisely the minimum energy needed to do so [10]. Using Eq. (12), one can now rewrite the entropy production (8) in the simple form $\dot{S}_i = \mathcal{F}I$. Here I is the current introduced in Eq. (12) and the associated thermodynamic force \mathcal{F} can be expressed in terms of dimensionless scaled energies x_l and x_r ,

$$\mathcal{F} = x_l - x_r; \quad x_r = \frac{\varepsilon - \mu_r}{T_r}, \quad x_l = \frac{\varepsilon - \mu_l}{T_l}. \quad (13)$$

Hence the two flows and forces collapse into a single flux I and a single corresponding thermodynamic force \mathcal{F} , respectively. Note that equilibrium, that is, zero entropy production, is reached for $\mathcal{F} = 0$. This does not require that the forces \mathcal{F}_E and \mathcal{F}_M be zero separately. In fact in the vicinity of $\mathcal{F} = 0$ the device can operate at Carnot efficiency, see for example [3,4,12]. Using Eq. (12), the power (10) becomes

$$\mathcal{P} = -\dot{\mathcal{W}} = (T_r x_r - T_l x_l) I = -T_r (\mathcal{F} - \eta_c x_l) I, \quad (14)$$

and the thermodynamic efficiency (11) reads

$$\eta = \frac{\mu_l - \mu_r}{\varepsilon - \mu_r} = 1 - (1 - \eta_c) \frac{x_l}{x_r}. \quad (15)$$

The properties of the system are contained in the dependence of the flux I on the variables x_l and x_r , $I = I(x_r, x_l)$. Its explicit expression is obtained by inserting the steady-state solution of the master equation (1) into the expression (4) for the mass flux.

To identify the regime of maximum power, we proceed in two steps. The extremum of power with respect to \mathcal{F} is determined by the condition

$$T_r^{-1} \frac{\partial \dot{W}}{\partial \mathcal{F}} = I + (\mathcal{F} - x_l \eta_c) \partial_{\mathcal{F}} I = 0. \quad (16)$$

Since we are interested in the behavior around equilibrium, including the first nonlinear correction term to the linear regime, we expand the current $I(x_r, x_l) = I(x_l - \mathcal{F}, x_l)$ to quadratic order in \mathcal{F} , $I = L\mathcal{F} + M\mathcal{F}^2 + \mathcal{O}(\mathcal{F}^3)$. The Onsager coefficients are given by $L = -I'_1(x_l, x_l)$ and $M = I''_{11}(x_l, x_l)/2$. The primes denote the number of derivatives and the subindices indicate whether these derivatives are taken with respect to the first or second variable. Furthermore, since \mathcal{F} has to become zero when η_c goes to zero, we can write, again to quadratic order, that $\mathcal{F} = b_1 \eta_c + c_1 \eta_c^2 + \mathcal{O}(\eta_c^3)$. Insertion in the extremum condition (16) allows us to identify the coefficients $b_1 = x_l/2$ and $c_1 = Mx_l^2/(8L)$. The resulting expression for the efficiency (15) reads

$$\eta = \frac{\eta_c}{2} + \left(\frac{1}{4} - \frac{Mx_l}{8L} \right) \eta_c^2 + \mathcal{O}(\eta_c^3). \quad (17)$$

Next, we maximize power with respect to x_l ,

$$T_r^{-1} \frac{\partial \dot{W}}{\partial x_l} = -\eta_c I + (\mathcal{F} - x_l \eta_c) \partial_{x_l} I = 0. \quad (18)$$

It suffices to find the result to lowest order in η_c . Inserting the expansions $I = L\mathcal{F} + \mathcal{O}(\eta_c^2)$ and $\mathcal{F} = \eta_c x_l/2 + \mathcal{O}(\eta_c^2)$, one finds that $x_l = -2L/\partial_{x_l} L$. Combined with Eq. (17), we finally arrive at the following result for the efficiency at maximum power, valid up to quadratic order in η_c :

$$\eta = \frac{\eta_c}{2} + \left(1 + \frac{M}{\partial_{x_l} L} \right) \frac{\eta_c^2}{4} + \mathcal{O}(\eta_c^3). \quad (19)$$

We conclude that, while we recover the universal value of the coefficient 1/2 in the linear term, the coefficient of the quadratic term is in general model dependent. However, as we now proceed to show, the appearance of the coefficient 1/8 in previously studied models [8,10] derives from the fact that these models possess a left-right symmetry. More precisely, such a symmetry implies that the switching of temperatures β_ν and chemical potentials μ_ν leads to an inversion of the flux,

$$I(x_r, x_l) = -I(x_l, x_r). \quad (20)$$

By deriving both sides with respect to x_r and x_l and then setting $x_r = x_l$, one finds that $I''_{12}(x_l, x_l) = 0$. Together with $\partial_{x_l} L = -I''_{11}(x_l, x_l) - I''_{12}(x_l, x_l)$, we conclude that the condition $2M = -\partial_{x_l} L$ is verified and universality of the coefficient 1/8 is established under the symmetry specified in Eq. (20).

To illustrate these findings, we turn to the analysis of the maser model introduced in [14], see Fig. 1. The system possesses three energy levels ϵ_i , $i = 1, 2, 3$. It exchanges photons with three equilibrium black bodies R , L , and S (temperatures T_r , T_l , and T_s) with corresponding specific frequencies $h\nu_r = \epsilon_3 - \epsilon_1$, $h\nu_l = \epsilon_3 - \epsilon_2$, and $h\nu_s = \epsilon_2 - \epsilon_1$. The reservoirs R , L , and S control the transitions 1–3, 2–3 and 1–2, respectively. The stochastic dynamics of these transitions are described by the master equation (1), with rates corresponding to the processes of absorption, spontaneous emission, and stimulated emission of the photons. They are given by $W_{31}^{(r)} = \Gamma_r n(x_r)$ (absorption of a photon from R) and $W_{13}^{(r)} = \Gamma_r [1 + n(x_r)]$ (spontaneous and stimulated emission of a photon into R), and identical expressions for transitions 2–3 and 1–2, with the indices r replaced by l and s , respectively. Here, we introduced the Bose-Einstein distribution $n(x) = [\exp(x) - 1]^{-1}$, with the scaled energies $x_r = h\nu_r/T_r$, $x_l = h\nu_l/T_l$ and $x_s = h\nu_s/T_s$, and the reduced Einstein coefficients Γ_ν .

To transform the system into a thermal engine, we consider the high temperature limit $T_s \rightarrow \infty$ ($x_s \rightarrow 0$). The reservoir S effectively becomes a repository of work, since heat stored in a reservoir at infinite temperature can be recuperated at 100% (the corresponding Carnot efficiency being equal to 1). We next note the cyclic nature of the transitions: Starting from state 1, in order to deposit the amount $-w = h\nu_s$ as work into the S reservoir (transition $2 \rightarrow 1$), the system first needs to absorb a photon $q^{(r)} = h\nu_r$ from the hot reservoir (transition $1 \rightarrow 3$) and next deposit $-q^{(l)} = h\nu_l$ into the cold reservoir (transition $3 \rightarrow 2$). This (with the reverse process) is the only available cycle. The corresponding efficiency of the cycle reads:

$$\eta = \frac{-w}{q^{(r)}} = \frac{\epsilon_2 - \epsilon_1}{\epsilon_3 - \epsilon_1} = 1 - (1 - \eta_c) \frac{x_l}{x_r}. \quad (21)$$

At steady state, the system will, on average, run through I such cycles per unit time, with corresponding heat flows $\dot{Q}^{(r)} = q_r I$ and $\dot{Q}^{(l)} = q_l I$. The power of the device is

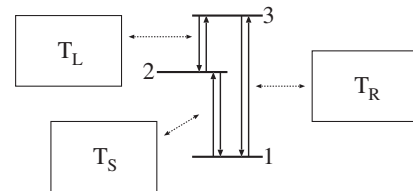


FIG. 1. Illustration of the maser model.

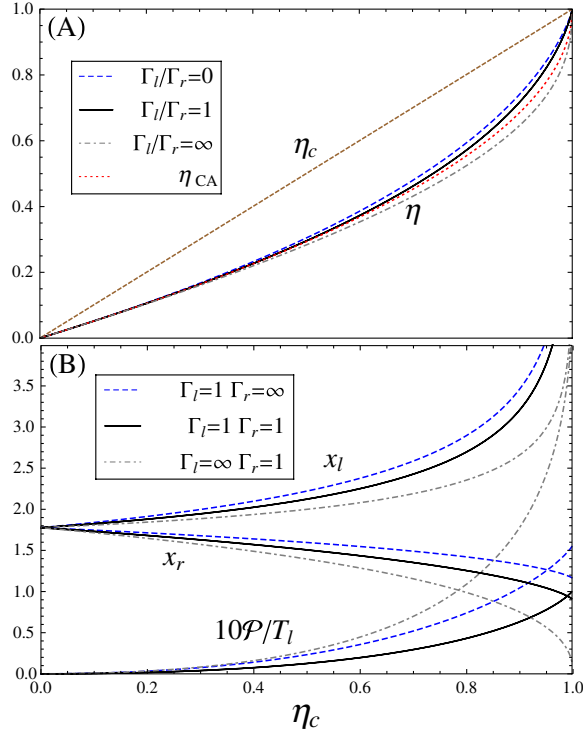


FIG. 2 (color online). (a) Efficiency at maximum power compared with Carnot efficiency (straight dashed line) and Curzon-Ahlborn efficiency (dotted line). (b) Scaled energies x_l and x_r and maximum power \mathcal{P} (note that x_l and x_r depend only on the ratio Γ_l/Γ_r but \mathcal{P} does not).

given by

$$\mathcal{P} = -wI = \dot{Q}^{(r)} + \dot{Q}^{(l)} = (T_r x_r - T_l x_l)I. \quad (22)$$

We thus recover the previously derived results of the strong coupling regime, cf. Eqs. (14) and (15). To complete the analysis, we need to evaluate the steady-state current I . This is a matter of algebra, involving the steady-state solution of the master equation using the transition rates given above. One finds:

$$I = \frac{(e^{x_l} - e^{x_r})\Gamma_l\Gamma_r}{(1 + 2e^{x_l})(e^{x_r} - 1)\Gamma_l + (1 + 2e^{x_r})(e^{x_l} - 1)\Gamma_r}. \quad (23)$$

Concerning efficiency of the device at maximum power, we can now invoke the general conclusions mentioned earlier. The symmetry criterion (20) for the current is only satisfied when $\Gamma_l = \Gamma_r$. Under this condition, the efficiency at maximum power displays the universal coefficient 1/8 for the quadratic term, in addition to the universal linear coefficient 1/2. This observation is confirmed by an explicit calculation for the model under consideration. We find:

$$\eta = \frac{\eta_c}{2} + \left(1 - \frac{3(\Gamma_l - \Gamma_r)}{(\Gamma_l + \Gamma_r)(3\cosh\alpha + \sinh\alpha)}\right) \frac{\eta_c^2}{8} + \mathcal{O}(\eta_c^3),$$

where $\alpha = 1.77676$, the solution of the transcendental equation $2 + \alpha + 2e^\alpha + 2(\alpha - 2)e^{2\alpha} = 0$, is also the

asymptotic value of x_l and x_r when $\eta_c \rightarrow 0$. To complete the picture, we have reproduced, in Fig. 2(a), the efficiency at maximum power as a function of η , with $\eta \in [0, 1]$, for the cases $\Gamma_l/\Gamma_r = 0, 1$ and ∞ [18]. All three curves are remarkably close to the Curzon-Ahlborn efficiency, even though the efficiency is slightly larger in the first two cases and slightly less in the last case. In view of their technological interest, we also include in Fig. 2(b) the corresponding maximum power and the operational conditions of the scaled energies x_l and x_r .

M.E. is supported by the FNRS Belgium (chargé de recherches) and by the government of Luxembourg (Bourse de formation recherches). This research is supported in part by the National Science Foundation under Grant No. PHY-0354937. We thank Dr. B. Cleuren for stimulating discussions.

*Also at Center for Nonlinear Phenomena and Complex Systems, Université Libre de Bruxelles, Code Postal 231, Campus Plaine, B-1050 Brussels, Belgium.

- [1] F. Curzon and B. Ahlborn, *Am. J. Phys.* **43**, 22 (1975).
- [2] C. Van den Broeck, *Phys. Rev. Lett.* **95**, 190602 (2005).
- [3] O. Kedem and S. R. Caplan, *Trans. Faraday Soc.* **61**, 1897 (1965).
- [4] C. Van den Broeck, *Adv. Chem. Phys.* **135**, 189 (2007).
- [5] A. E. Allahverdyan, R. S. Johal, and G. Mahler, *Phys. Rev. E* **77**, 041118 (2008).
- [6] Y. Izumida and K. Okuda, *Europhys. Lett.* **83**, 60003 (2008).
- [7] T. Schmiedl and U. Seifert, *Europhys. Lett.* **81**, 20003 (2008).
- [8] M. Esposito, K. Lindenberg, and C. Van den Broeck, arXiv:0808.0216v1.
- [9] A. Gomez-Marin and J. M. Sancho, *Phys. Rev. E* **74**, 062102 (2006).
- [10] Z. C. Tu, *J. Phys. A* **41**, 312003 (2008).
- [11] A. Parmeggiani, F. Julicher, A. Ajdari, and J. Prost, *Phys. Rev. E* **60**, 2127 (1999).
- [12] T. E. Humphrey, R. Newbury, R. P. Taylor, and H. Linke, *Phys. Rev. Lett.* **89**, 116801 (2002); T. E. Humphrey and H. Linke, *Phys. Rev. Lett.* **94**, 096601 (2005); M. F. O'Dwyer, T. E. Humphrey, and H. Linke, *Nanotechnology* **17**, S338 (2006).
- [13] B. Cleuren, C. Van den Broeck, and R. Kawai, *Phys. Rev. E* **74**, 021117 (2006).
- [14] H. E. D. Scovil and E. O. Schulz DuBois, *Phys. Rev. Lett.* **2**, 262 (1959).
- [15] J. Schnakenberg, *Rev. Mod. Phys.* **48**, 571 (1976); Luo Jiu-Li, C. Van den Broeck, and G. Nicolis, *Z. Phys. B* **56**, 165 (1984).
- [16] M. Esposito, U. Harbola, and S. Mukamel, *Phys. Rev. E* **76**, 031132 (2007).
- [17] S. R. de Groot and P. Mazur, *Non-Equilibrium Thermodynamics* (Dover, New York, 1984).
- [18] These results are obtained numerically, as they require the solution of transcendental equations.