

High-Speed Jet Formation after Solid Object Impact

Stephan Gekle,¹ José Manuel Gordillo,² Devaraj van der Meer,¹ and Detlef Lohse¹

¹*Department of Applied Physics and J. M. Burgers Centre for Fluid Dynamics, University of Twente, P.O. Box 217, 7500 AE Enschede, The Netherlands*

²*Área de Mecánica de Fluidos, Departamento de Ingeniería Aeroespacial y Mecánica de Fluidos, Universidad de Sevilla, Avenida de los Descubrimientos s/n 41092, Sevilla, Spain*

(Received 24 September 2008; published 23 January 2009)

A circular disc hitting a water surface creates an impact crater which after collapse leads to a vigorous jet. Upon impact an axisymmetric air cavity forms and eventually pinches off in a single point halfway down the cavity. Two fast sharp-pointed jets are observed shooting up- and downwards from the closure location, which by then has turned into a stagnation point surrounded by a locally hyperbolic flow pattern. This flow, however, is *not* the mechanism feeding the jets. Using high-speed imaging and numerical simulations we show that jetting is fed by the local flow around the base of the jet, which is forced by the colliding cavity walls. We show how the well-known theory of a collapsing void (using a line of sinks on the symmetry axis) can be continued beyond pinch-off to obtain a new and quantitative model for jet formation which agrees well with numerical and experimental data.

DOI: 10.1103/PhysRevLett.102.034502

PACS numbers: 47.55.N-, 47.11.Hj, 47.55.D-, 47.55.df

The most prominent phenomenon when a solid object hits a water surface is the high-speed jet shooting upwards into the air. The basic sequence of events leading to this jet has been studied since Worthington over a century ago: After impact, the intruder creates an air-filled cavity in the liquid which due to hydrostatic pressure immediately starts to collapse, eventually leading to the pinch-off of a large bubble. Two very thin jets are ejected up-, respectively, downwards from the pinch-off point. This finite-time singularity has been intensively studied in recent time [1–5]. Such singularities have been shown to lead to a hyperbolic flow pattern after collapse and thus to the formation of liquid jets [6–9].

As we show in the present work, however, the radial energy focusing towards the singular pinch-off point alone is not sufficient to explain the extreme thinness of jets observed after the impact of a solid object. Instead, this jet formation is shown to depend crucially on the kinetic energy contained in the entire collapsing wall of the cavity even far above the pinch-off singularity.

This is in contrast to jets observed in many other situations where narrow confining cavity walls are not present, e.g., for bubbles bursting on a free surface or near a solid wall [9–11], wave focusing [12,13], or jets induced by pressure waves [14]. In addition, surface tension in our case turns out to be irrelevant in contrast to capillary-driven scenarios as suggested for Faraday waves [7,8]. In all these cases jetting seems thus to be accomplished by a mechanism different from the one in this Letter. In the case of drop impact [15,16] or gas injection through a needle [3,17], however, the formation of a cavity and its subsequent inertial collapse can sometimes be observed and the present mechanism might be of relevance.

Our experimental setup consists of a circular disc with radius R_0 that is pulled through a water surface with

velocity V_0 as described in [4]. The velocity V_0 is kept constant throughout the whole process. Global and local Reynolds and Weber numbers are fairly large as shown in [4] and therefore the only relevant control parameter is the Froude number, $Fr = V_0^2/R_0g$ with gravity g , which we choose to equal 5.1 (for $R_0 = 2$ cm and $V_0 = 1$ m/s).

We treat the problem as inviscid and irrotational. This assumption is justified by the large Reynolds numbers [18] together with the very short time scale of jet formation and is confirmed by detailed particle image velocimetry measurements [19]. We thus make use of potential flow employing an axisymmetric boundary-integral technique which explicitly tracks the free surface. The topology change at pinch-off is implemented as follows: When the radial position of the node closest to the axis becomes smaller than the local node distance, the two neighboring nodes are shifted to the axis, conserving their vertical position and their potential. Continuing the simulation, these nodes eventually form the tip of the top and bottom jets. These numerical simulations have shown excellent agreement with experiments for different impact geometries [4,20] and we verified carefully that our results are independent of numerical parameters such as node density and time stepping. The influence of air is neglected.

Figure 1 shows the pinch-off of the impact cavity and the subsequent formation of two thin jets. We use polar coordinates with $z = 0$ at the pinch-off height and $t = 0$ at the pinch-off moment. Velocity, length, and time scales are normalized by V_0 , R_0 , and $T_0 = R_0/V_0$, respectively. As can be clearly appreciated from Fig. 1 surface tension is completely irrelevant for the present mechanism which is markedly different from the jetting mechanism suggested for Faraday waves [7,8].

We set out to elucidate the precise mechanism which turns the horizontally collapsing cavity of Fig. 1(a) into the

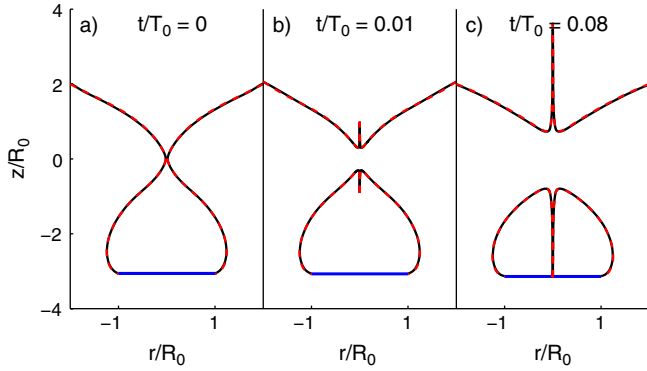


FIG. 1 (color online). The free surface shape (black solid line) for simulations with surface tension ($\sigma = 72.8$ mN/m) and without surface tension (red or gray dashed line) and the disc position (blue or dark gray) from the simulation at pinch-off (a), at an intermediate time with the growing up- and downward jets (b) and at the instant when the downward jet hits the disc (c). As the free surface shapes lie almost exactly on top of each other we conclude that surface tension has no influence on the dynamics.

thin vertical jets of Figs. 1(b) and 1(c). For this we focus on the dynamics of the upward jet base defined as the local surface minimum illustrated in Fig. 2. It is remarkable how the geometric confinement of the narrow cavity forces the jet to move upwards very fast while the widening of its base is restricted by the collapsing walls. We find that jet formation occurs on an extremely short time scale: the jet grows above the initial quiescent surface in less than 1% of the total time after impact.

These high speeds, however, are not due to a hyperbolic flow around the original pinch-off point as one could have expected based on suggested jetting mechanisms in other situations [6–9]. Figure 3 demonstrates how the fluid here is not accelerated upwards continuously from the pinch-off singularity but instead acquires its large vertical momentum in a small zone located around the jet base: Since each horizontal cross section of the axisymmetric cavity wall will keep flowing radially inwards even after pinch-off, eventually it must collide on the axis in a similar way as the original pinch-off. This creates an upward and downward acceleration, of which the upward acceleration feeds the jet. The downward (negative) acceleration below the jet base can clearly be observed in Fig. 3. It is thus essential to consider not only the singularity itself but also the continuous collapse of the entire cavity wall in any kind of theoretical modeling.

Inspired by the above observations we derive an analytical model for the jet formation: First, the flow field of the collapsing cavity before pinch-off will be described by a line of sinks along the axis of symmetry as in, e.g., [2,5,21]. The strength of these sinks will be determined from the simulation at pinch-off and forms the only input quantity for our model. Next, we will show how this picture naturally leads to a good description of the bulk flow after pinch-off. The line of sinks acquires a “hole” between the two jets and an additional point sink emerges near the jet

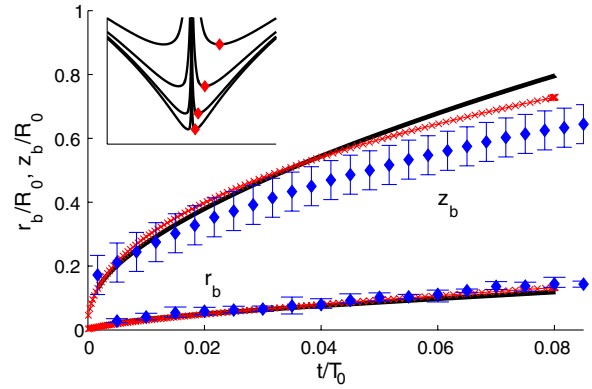


FIG. 2 (color online). The inset illustrates the position of the jet base (red diamond) at different times. In contrast to other situations the vertical motion is much faster than the widening. The main figure shows the upwards motion $z_b(t)$ of the jet base predicted by the analytical model (black line) which compares very favorably with simulation (red crosses) and experiment (blue diamonds). (The slightly slower motion in the experiment can be attributed to an imperfect axisymmetry reducing the radial focusing effect and thus slowing down the jet motion.) The agreement between model, experiment, and numerics is equally good for the base widening $r_b(t)$. The motion of z_b is reminiscent to gas bubbles injected into water [3].

bases. Finally, we will obtain two differential equations for the widening and upward motion of the jet base which are the two most relevant processes for jet formation. Secondary processes as jet breakup and the precise dynamics of the jet tip are not considered here.

As a starting point, Green’s identity allows us to write the potential at any point \mathbf{r} in the liquid bulk as an integral of sources and dipoles over the free surface:

$$4\pi\phi(\mathbf{r}) = \int_S dS' \mathbf{n}' \cdot \left[\frac{1}{|\mathbf{r} - \mathbf{r}'|} \nabla' \phi - \phi(\mathbf{r}') \nabla' \frac{1}{|\mathbf{r} - \mathbf{r}'|} \right] \quad (1)$$

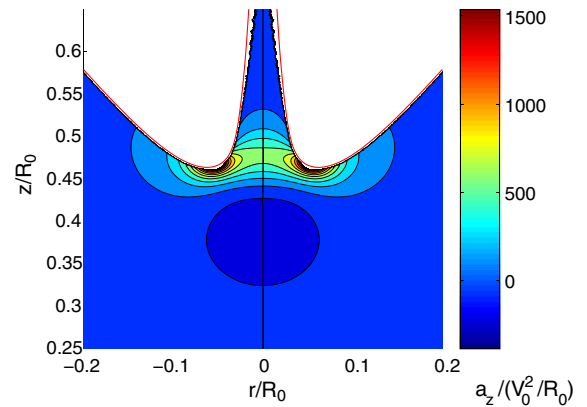


FIG. 3 (color online). The vertical material acceleration $a_z = Dv_z/Dt$ at $t/T_0 = 0.028$ is confined to a small region around the jet base. The pinch-off location at (0,0) lies too deep to influence the jetting process beyond the first instants after pinch-off.

with the integration taken over the free surface S as illustrated in Figs. 4(a) and 4(b). Since the dipole term decays quickly as $1/|\mathbf{r} - \mathbf{r}'|^2$, the source term (which decays only as $1/|\mathbf{r} - \mathbf{r}'|$) will be the only relevant contribution to the integral if the observation point is chosen sufficiently far from the free surface. As the cavity close to pinch-off becomes slender, $\partial\phi/\partial n \approx \dot{R}$ for a point R on the free surface. Since the surface has no overhangs we write $dS = 2\pi R dz$. Approximating the radial distance as $r - r' \approx r$ turns Eq. (1) into [2,5]:

$$2\phi(r, z) = \int \frac{q_{\text{axis}}(z', t)}{\sqrt{r^2 + (z - z')^2}} dz', \quad (2)$$

with a time- and height-dependent line distribution of sinks $q_{\text{axis}}(z, t)$ along the axis of symmetry. Keeping in mind the extremely short time scale of jet formation as compared to the cavity collapse, we can assume the sink strength to remain constant in time from the moment of pinch-off t_c onwards, $q_c(z) = q_{\text{axis}}(z, t_c)$.

During jet formation we divide the free surface into two regions separated by the jet base. The outer region contains the collapsing cavity until the jet base, while the inner region extends from the base inwards to the axis of symmetry as sketched in Fig. 4(b). The principal fluid motion in the outer region remains identical to the collapsing cavity before pinch-off. High up in the jet, the motion will be vertically upwards with negligible radial velocity and thus will not contribute to the integral Eq. (2). As a free surface fluid element travels through the jet base and further up into the jet, it transitions from one flow regime to the other by decelerating its initial radial motion and turning it into vertical momentum. Thereby, its contribution to the integral (2) decays to a negligible amount. This decay of the sink strength cannot happen instantaneously, which leads to an accumulation (see Fig. 4) of sinks around the jet base and a corresponding inward motion in that area. The length over which the sinks decay and accumulate must be proportional to the radius of the jet base which is the only relevant local length scale, Cr_b , with C a constant of order one. This accumulation of sinks makes the dynamics qualitatively different from the collapsing cavity before pinch-off as in [2,5,21] and is crucial for the emergence of the high-speed jet. Note that our model is constructed only for the bulk flow outside the actual jet. The sinks on the axis thus always remain outside of the liquid domain which they aim to describe.

From an observation point at $r \gg r_b$, the contribution of the sinks accumulating around the base is seen as a point sink of strength $Cr_b q_c(z_b)$ since $q_c(z) \approx q_c(z_b)$ along the length Cr_b . The point sink is located some distance above the base which is again proportional to the local length scale, i.e., $z_{\text{sink}} = z_b + C_{\text{sink}} r_b$ introducing a second constant C_{sink} of order unity.

Similarly, the most relevant contribution of the outer region will be that part of the integral closest to the observation point \mathbf{r} . At an altitude similar to or lower

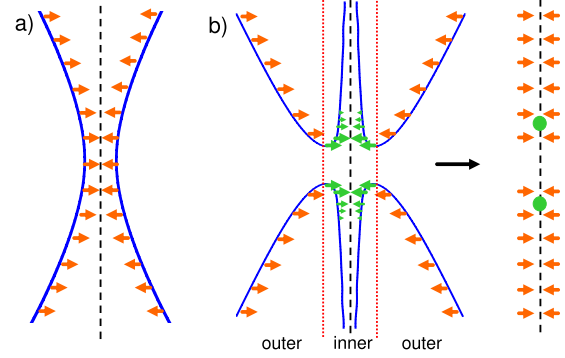


FIG. 4 (color online). (a) Sketch of the collapsing cavity being described by a distribution of sinks (orange or dark gray arrows; lengths are not representative of sink strength) on its free surface. (b) During jet formation the cavity collapse in the outer region remains unchanged (orange or dark gray arrows) while around the jet base sinks accumulate (green or light gray arrows). This can be approximated as a line of sinks along the axis of symmetry plus a point sink (green or light gray dot). In the central region around the pinch-off point sinks are completely absent. For a detailed description, see main text.

than the base, this is the region close to the base where again $q_c(z) \approx q_c(z_b)$. To allow analytical treatment of the integral from Eq. (2), we can thus at any given time assume a sink strength being constant in space along the entire axis above the base. Through the motion of the base this sink strength depends implicitly on time $q_b(t) = q_c(z_b(t))$.

Combining the approximations of the preceding paragraphs, we are now able to give an analytical expression derived from Eq. (2) for the potential at any point (r, z) as a function of the base position r_b and z_b :

$$2\phi = \underbrace{q_b \int_{-\infty}^{\infty} \frac{dz'}{\sqrt{r^2 + (z - z')^2}}}_{\text{collapsing cavity}} - \underbrace{q_b \int_{-z_b}^{z_b} \frac{dz'}{\sqrt{r^2 + (z - z')^2}}}_{\text{hole}} + \underbrace{\frac{Cq_b r_b}{\sqrt{r^2 + [z - (z_b + C_{\text{sink}} r_b)]^2}}}_{\text{point sink}} \quad (3)$$

The initial sink distribution is obtained from the numerics by calculating $q_c(z) = -R\dot{R}$ along the surface just once at pinch-off. It forms the only input quantity required by our jetting model. Note that, as we are dealing with the upwards jet, the point sink for the downward jet is far away and can be neglected.

In order to derive the desired ODEs for $r_b(t)$ and $z_b(t)$ we apply the Bernoulli equation with zero pressure $\partial\phi/\partial t + |\nabla\phi|^2/2 = 0$ on the free surface, neglecting small hydrostatic contributions. We then employ Eq. (3) to obtain the first differential equation involving $\dot{r}_b(t)$ and $\dot{z}_b(t)$. The second ODE results from the kinematic boundary condition at the jet base which, since the base is a local minimum, reads $\partial\phi/\partial z = \dot{z}_b$. This leads to a closed system of two ODEs. The calculations are presented in EPAPS_2 [22]. With $C = 4.55$ and $C_{\text{sink}} = 0.63$ the agreement with

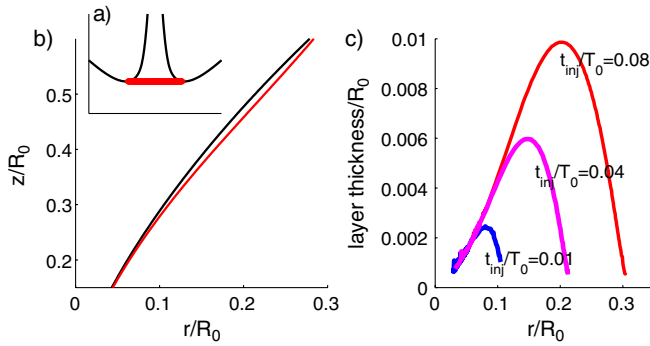


FIG. 5 (color online). A line of tracer particles is injected at the base of the jet at $t_{inj}/T_0 = 0.08$ (a). After advecting them backwards in time to the moment of pinch-off they form the border of a thin surface layer containing the liquid that eventually ends up in the jet (b). A corresponding movie is included as EPAPS_1 [22]. (c) The thickness of the layer that has gone into the jet at three different times.

simulations and experiment is remarkable as demonstrated by Fig. 2. We stress that the model requires as its only ingredient the sink strength distribution at pinch-off.

Finally, it is important to understand which region of the liquid bulk at pinch-off will eventually become ejected into the jet. This knowledge can be obtained from the numerical simulations by injecting a line of particles at the base of the jet, cf. Fig. 5(a). Since the flow field is known for all times previous to particle injection, the tracers can be followed backwards to their origin at $t = 0$. The line of tracers injected at the final instant will yield the outer boundary of the fluid layer that, together with the free surface, delimitates the fluid volume from which the jet originates. While the radial extent of the fluid layer depicted in Fig. 5(c) is of the order of the disc radius, its maximum thickness is only about $0.01R_0$. Thus far, a similar surface layer has only been observed when jetting is directly caused by surface waves [12]. In the present case, the thinness of the layer is even more remarkable as it does not arise from a surface phenomenon but from the collapsing motion of the entire bulk liquid.

In conclusion, we have studied in detail the mechanism responsible for the formation of high-speed Worthington jets after the impact of solid objects on a liquid surface. We showed that the liquid forming the jet originates from a thin layer straddling the surface of the impact cavity. Our main finding, nevertheless, is the vital importance of the radial energy focusing along the entire wall of this cavity. In contrast to other situations [6–9], the hyperbolic flow around the singular pinch-off point turned out to be not the relevant mechanism behind jet formation. Instead, our case seems more reminiscent of the violent jets observed during the explosion of lined cavities [23]. We proposed an analytical model which is in very good quantitative agreement with experimental data and numerical simulations. The only ingredients to the model are two constants of order one and a sink distribution $q_c(z)$ describing the collapsing cavity at pinch-off.

We expect that the present mechanism is also responsible for the very thin jets ejected after the impact of water droplets on a liquid pool [15] in a parameter range where a small cylindrical cavity at the bottom of the crater collapses in a very similar fashion as the impact cavity described in this work. In the future, our model of jet formation can serve as the base for predicting the shape and the velocity of the jet itself.

We thank A. Prosperetti for discussions and Johanna Bos for experimental data. This work is part of the program of the Stichting FOM, which is financially supported by NWO. J.M.G. thanks the financial support of the Spanish Ministry of Education under Projects No. DPI2005-08654-C04-02 and No. DPI2008-06624-C03-01.

- [1] J. C. Burton, R. Waldrep, and P. Taborek, Phys. Rev. Lett. **94**, 184502 (2005); N. C. Keim *et al.*, Phys. Rev. Lett. **97**, 144503 (2006); J. M. Gordillo *et al.*, Phys. Rev. Lett. **95**, 194501 (2005).
- [2] J. M. Gordillo and M. Pérez-Saborid, J. Fluid Mech. **562**, 303 (2006).
- [3] S. T. Thoroddsen, T. G. Etoh, and K. Takehara, Phys. Fluids **19**, 042101 (2007).
- [4] R. Bergmann *et al.*, Phys. Rev. Lett. **96**, 154505 (2006).
- [5] J. Eggers *et al.*, Phys. Rev. Lett. **98**, 094502 (2007).
- [6] M. S. Longuet-Higgins, J. Fluid Mech. **127**, 103 (1983).
- [7] J. E. Hogrefe *et al.*, Physica (Amsterdam) **123D**, 183 (1998).
- [8] B. W. Zeff *et al.*, Nature (London) **403**, 401 (2000).
- [9] L. Duchemin *et al.*, Phys. Fluids **14**, 3000 (2002).
- [10] J. M. Boulton-Stone and J. R. Blake, J. Fluid Mech. **254**, 437 (1993).
- [11] J. R. Blake *et al.*, J. Fluid Mech. **255**, 707 (1993).
- [12] F. MacIntyre, J. Phys. Chem. **72**, 589 (1968).
- [13] S. T. Thoroddsen, T. G. Etoh, and K. Takehara, Phys. Fluids **19**, 052101 (2007).
- [14] A. Antkowiak *et al.*, J. Fluid Mech. **577**, 241 (2007).
- [15] M. Rein, Fluid Dyn. Res. **12**, 61 (1993).
- [16] H. N. Oguz and A. Prosperetti, J. Fluid Mech. **219**, 143 (1990); D. Morton, M. Rudman, and J. L. Liow, Phys. Fluids **12**, 747 (2000); Q. Deng, A. V. Anilkumar, and T. G. Wang, J. Fluid Mech. **578**, 119 (2007); D. Bartolo, C. Josserand, and D. Bonn, Phys. Rev. Lett. **96**, 124501 (2006).
- [17] R. Bolaños-Jiménez *et al.*, Phys. Fluids **20**, 112104 (2008).
- [18] After pinch-off one can additionally define Re_{jet} using the width of the jet at its base and the local free surface velocity. Also this Reynolds number is $O(10^3)$.
- [19] R. Bergmann *et al.*, arXiv:0804.0748v1.
- [20] S. Gekle *et al.*, Phys. Rev. Lett. **100**, 084502 (2008).
- [21] M. S. Longuet-Higgins, B. R. Kerman, and K. Lunde, J. Fluid Mech. **230**, 365 (1991).
- [22] See EPAPS Document No. E-PRLTAO-102-014905 for supplementary material. For more information on EPAPS, see <http://www.aip.org/pubservs/epaps.html>.
- [23] G. D. Birkhoff *et al.*, J. Appl. Phys. **19**, 563 (1948).