




Flow rate-pressure drop relation for deformable channels via fluidic and elastic reciprocal theorems

Evgeniy Boyko ^{1,2,3,*} Howard A. Stone ^{1,†} and Ivan C. Christov ^{2,‡}

¹*Department of Mechanical and Aerospace Engineering, Princeton University, New Jersey 08544, USA*

²*School of Mechanical Engineering, Purdue University, West Lafayette, Indiana 47907, USA*

³*Davidson School of Chemical Engineering, Purdue University, West Lafayette, Indiana 47907, USA*



(Received 22 March 2022; accepted 19 August 2022; published 2 September 2022)

Viscous flows through configurations manufactured or naturally assembled from soft materials apply both pressure and shear stress at the solid-liquid interface, leading to deformation of the fluidic conduit's cross section, which, in turn, affects the flow rate-pressure drop relation. Conventionally, calculating this flow rate-pressure drop relation requires solving the complete elasto-hydrodynamic problem, which couples the fluid flow and elastic deformation. In this Letter, we use the reciprocal theorems for Stokes flow and linear elasticity to derive a closed-form expression for the flow rate-pressure drop relation in deformable microchannels, bypassing the detailed calculation of the solution to the fluid-structure-interaction problem. For small deformations (under a domain perturbation scheme), our theory provides the leading-order effect of the interplay between the fluid stresses and the compliance of the channel on the flow rate-pressure drop relation. Our approach uses solely the fluid flow solution and the elastic deformation due to the corresponding fluid stress distribution in an undeformed channel, eliminating the need to solve the coupled elasto-hydrodynamic problem. Unlike previous theoretical studies that neglected the presence of lateral sidewalls (and considered shallow geometries of effectively infinite width), our approach allows us to determine the influence of confining sidewalls on the flow rate-pressure drop relation. In particular, for the flow-rate-controlled situation and the Kirchhoff-Love plate-bending theory for the elastic deformation, we show a trade-off between the effect of compliance of the deforming top wall and the drag due to sidewalls on the pressure drop. Whereas compliance decreases the pressure drop, the drag due to sidewalls increases it. Our theoretical framework may provide insight into existing experimental data and pave the way for the design of novel optimized soft microfluidic configurations of different cross-sectional shapes.

DOI: [10.1103/PhysRevFluids.7.L092201](https://doi.org/10.1103/PhysRevFluids.7.L092201)

I. INTRODUCTION

Pressure-driven viscous flows through conduits manufactured from soft materials apply both pressure and shear stress at the solid-liquid interface, leading to deformation of the cross-section, which, in turn, affects the relationship between the flow rate q and the pressure drop Δp [1–3]. Understanding this $q - \Delta p$ relation is important for various microfluidic, lab-on-a-chip, biomedical, and soft robotics applications, such as pressure-actuated valves [4], passive fuses [5], pressure sensors [6,7], soft actuators [8,9], and estimating the drug injection force [10]. Conventionally,

*eboyko@princeton.edu; eboyko@purdue.edu

†hastone@princeton.edu

‡christov@purdue.edu

calculating the flow rate-pressure drop relation requires solving the complete elastohydrodynamic problem [11], which couples the hydrodynamics to the elastic response, or a pressure-deformation relation is assumed *a priori* [12,13]. For example, recent studies used lubrication theory and linear elasticity to obtain the solution of the coupled problem for the fluid velocity and the elastic deformation. Then, the $q - \Delta p$ relation for Newtonian and complex fluids was derived from the latter for deformable microchannels that are slender and shallow [14–19]. However, as we show, these detailed calculations of the solution for coupled fluid-structure interaction can be bypassed, at least in some cases, by jointly applying the reciprocal theorems for the fluidic and elastic problems.

The Lorentz reciprocal theorem has been applied widely in low-Reynolds-number fluid mechanics to facilitate the calculation of integrated quantities by eliminating the need for calculating the detailed velocity and pressure fields (e.g., Refs. [20–22]). In particular, several studies showed the versatility of the Lorentz reciprocal theorem for evaluating the force and torque on a particle moving in the vicinity of a deformable boundary [23–29] as well as its linear and angular velocities. Although the integral form of the reciprocal theorem is particularly convenient for calculating integrated hydrodynamic quantities, such as force, torque, and flow rate [22], its use has been primarily limited to obtaining the force and torque acting on particles in flows of viscous fluids in unbounded and semi-infinite domains [30,31]. To date, only a few studies have utilized the reciprocal theorem to obtain the flow rate or flow rate-pressure drop relation for confined viscous Newtonian and complex fluid flows, such as in rigid channels [32–35].

In addition to fluid mechanics, the reciprocal theorem has been used extensively in the solid mechanics community since Maxwell [36] and Betti [37]; we refer the interested reader to the book of Achenbach [38]. Similar to the fluidic reciprocal theorem, which relates the velocity \mathbf{v} and stress $\boldsymbol{\sigma}_f$ fields of one problem to the velocity $\hat{\mathbf{v}}$ and stress $\hat{\boldsymbol{\sigma}}_f$ fields of an auxiliary problem, the elastic reciprocal theorem relates the displacement \mathbf{u} and stress $\boldsymbol{\sigma}_s$ fields of one problem to the displacement $\hat{\mathbf{u}}$ and stress $\hat{\boldsymbol{\sigma}}_s$ fields of an auxiliary problem. Given this similarity between the fluidic and elastic reciprocal theorems, one would expect to find the application of the theorems to fluid-structure interaction problems involving fluid flow and elastic deformation. However, to the best of our knowledge, no simultaneous application of the fluid and elastic reciprocal theorems has been presented to date, particularly, for calculating the flow rate-pressure drop relation for deformable channels.

In this Letter, we show how the reciprocal theorems for Stokes flow and linear elasticity can be harnessed to obtain the flow rate-pressure drop relation in deformable channels of an initially rectangular cross section, bypassing the detailed calculation of the solution to the fluid-structure interaction problem. Employing the slenderness of the geometry and considering small deformations, we derive a closed-form expression for the flow rate-pressure drop relation under a domain perturbation scheme. This relation accounts for the leading-order effect of the interplay between the fluid stresses and the compliance of the channel. Our approach uses only the fluid flow solution and the elastic deformation due to the corresponding fluid stress distribution in an undeformed channel without the need to solve the coupled elastohydrodynamic problem. Furthermore, we show that our theory allows determining the influence of confining lateral sidewalls on the $q - \Delta p$ relation, in contrast to previous theoretical studies that neglected the presence of sidewalls and considered shallow geometries of effectively infinite width [14,15,17–19,39]. We illustrate the use of our approach for the model case of a thin deformable top wall that obeys the Kirchhoff-Love plate-bending theory. For the flow-rate-controlled situation, we show that, whereas increased compliance of the channel decreases the pressure drop, the drag due to the sidewalls increases it.

II. PROBLEM FORMULATION AND GOVERNING EQUATIONS

Consider the incompressible steady pressure-driven flow of a Newtonian viscous fluid in a slender and deformable channel of length ℓ , width w , and (deformed) height h as shown in Fig. 1. The fluid flow has velocity $\mathbf{v} = (v_x, v_y, v_z)$ and pressure distribution p , which are induced by the imposed flow rate q . Our goal is to determine the resulting axial pressure drop Δp for a given

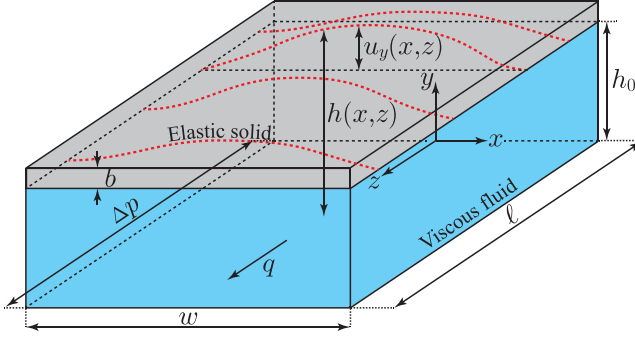


FIG. 1. Schematic illustration of the geometry consisting of a three-dimensional deformable channel of length ℓ with an initially rectangular cross section of width w and height h_0 . The channel contains a viscous fluid steadily driven by an imposed flow rate q , leading to the deformation $u_y(x, z)$ of the top wall of thickness b , which, in turn, affects the pressure drop Δp over the axial distance ℓ . The sidewalls are assumed to be rigid.

q . The top wall of the channel is soft and may deform due to the fluid stress distribution, acting at the fluid-solid interface, leading to the displacement field $\mathbf{u} = (u_x, u_y, u_z)$. The sidewalls are assumed to be rigid. Specifically, we use $u_y^0(x, z)$ to denote the steady vertical displacement of the lower surface of the top wall, i.e., the fluid-solid interface so that its position is given by $y = h(x, z) = h_0 + u_y^0(x, z)$, where h_0 is the undeformed height of the channel (in the absence of flow). We further assume the top wall of the channel has a constant thickness b and constant material properties.

We consider low-Reynolds-number flow so that fluid inertia is negligible compared to viscous forces. In this limit, the continuity and momentum equations governing the fluid motion take the form

$$\nabla \cdot \mathbf{v} = 0, \quad \nabla \cdot \boldsymbol{\sigma}_f = \mathbf{0}, \quad (1)$$

where $\boldsymbol{\sigma}_f = -p\mathbf{I} + \mu[\nabla\mathbf{v} + (\nabla\mathbf{v})^T]$ is the Newtonian stress tensor, \mathbf{I} is the identity tensor, and μ is the fluid's dynamic viscosity. The governing equations (1) are supplemented by the no-slip and no-penetration boundary conditions along the channel walls, $\mathbf{v} = \mathbf{0}$ at $y = 0$, $h(x, z)$, and at $x = \pm w/2$. Furthermore, the integral constraint $\int_{-w/2}^{w/2} \int_0^{h(x)} v_z(x, y, z) dy dx = q$ enforces the flow rate. In addition, we assume that fluid exits at the outlet to atmosphere and set $p(\ell) = 0$ so that $\Delta p = p(0)$.

Suppose that the top wall of the channel can be modeled as a linearly elastic isotropic solid with shear modulus G and first Lamé parameter λ . Neglecting body forces in the solid, the steady stress balance in the elastic material takes the form

$$\nabla \cdot \boldsymbol{\sigma}_s = \mathbf{0}, \quad (2)$$

where $\boldsymbol{\sigma}_s = \lambda(\nabla \cdot \mathbf{u})\mathbf{I} + 2G\mathbf{D}$ is the stress tensor of a linearly elastic solid and $\mathbf{D} = [\nabla\mathbf{u} + (\nabla\mathbf{u})^T]/2$ is the infinitesimal strain tensor. Note that G and λ are related to Young's modulus E and Poisson's ratio ν as $G = E/[2(1 + \nu)]$ and $\lambda = E\nu/(1 + \nu)(1 - 2\nu)$. The governing equation (2) is supplemented by the no-displacement boundary condition, $\mathbf{u} = \mathbf{0}$ along the lines of contact, $z = 0$, ℓ , and $x = \pm w/2$, with the inlet/outlet and rigid walls. In addition, at the fluid-solid interface $y = h(x, z)$, the continuity of stresses requires that $\mathbf{n} \cdot \boldsymbol{\sigma}_s = \mathbf{n} \cdot \boldsymbol{\sigma}_f$, where \mathbf{n} is the unit normal vector to the fluid-solid interface. This condition couples the fluidic and elastic problems. Finally, we assume a stress-free condition at the upper surface of the top wall, i.e., $\tilde{\mathbf{n}} \cdot \boldsymbol{\sigma}_s = \mathbf{0}$, where $\tilde{\mathbf{n}}$ is the unit normal vector to the upper surface of the soft wall.

We introduce dimensionless variables based on lubrication theory,

$$X = \frac{x}{w}, \quad Y = \frac{y}{h_0}, \quad Z = \frac{z}{\ell}, \quad V_x = \frac{v_x}{(\epsilon/\delta)v_c}, \quad V_y = \frac{v_y}{\epsilon v_c}, \quad V_z = \frac{v_z}{v_c}, \quad (3a)$$

$$P = \frac{p}{p_c}, \quad H = \frac{h}{h_0}, \quad U = \frac{u_y}{u_c}, \quad (3b)$$

where $v_c = q/(h_0 w)$ is the characteristic axial velocity scale, $p_c = \mu v_c \ell / h_0^2 = \mu q \ell / (w h_0^3)$ is the characteristic pressure scale, and u_c is the characteristic scale of deformation of the top wall [14]. Also, we have defined $\epsilon = h_0/\ell$ and $\delta = h_0/w$, which represent, respectively, the slenderness and the shallowness of the channel. We assume $\epsilon = h_0/\ell$ to be small, $\epsilon \ll 1$, but $\delta = h_0/w$ can be $O(1)$ with the ordering $0 < \epsilon \ll \min(\delta, 1)$. Thus, unlike previous theoretical studies that assumed $\delta = h_0/w \ll 1$ [14,15,17–19,39], we consider a slender channel that is *not* necessarily shallow.

In recent studies it was shown that for rectangular elastic top wall geometries, the horizontal displacements u_x and u_z are much smaller in comparison to the vertical displacement u_y [18]. The latter can also be rationalized using a scaling argument. Balancing the elastic elongational stress and the viscous stress at the top wall, we obtain that u_z scales as $\mu q \ell / (E w h_0^2)$. Thus, for example, for the plate-bending theory in which $b \ll w$ and $u_y \sim \mu q \ell w^3 / (E b^3 h_0^3)$, we find $u_z/u_y \sim b^3 h_0/w^4 \ll 1$. A similar argument yields $u_x/u_y \ll 1$. Therefore, it is sufficient and convenient to consider that the entire deformation of the top wall is in the y direction. Furthermore, for thin structures $b \lesssim w$, the deformation at the fluid-solid interface is representative of the entire wall motion (i.e., $u_y \approx u_y^0$), consistent with reduced theories of elastic deformation, such as those due to Winkler, Kirchhoff-Love, Mindlin-Reissner, and Föppl-von Kármán [40,41]. Therefore, in the following, we make explicit the kinematic assumption that the displacement of the fluid-solid interface can be written as $\mathbf{u} = (0, u_y(x, z), 0)$. Thus, the dimensionless deformed shape of the channel $H(X, Z)$ can be expressed in terms of the dimensionless top wall deformation $U(X, Z)$ as

$$H(X, Z) = 1 + (u_c/h_0)U(X, Z) = 1 + \beta U(X, Z), \quad (4)$$

where $\beta = u_c/h_0$ is the dimensionless ratio that quantifies the compliance of the top wall.

III. RECIPROCAL THEOREMS FOR VISCOUS FLOWS IN WEAKLY DEFORMABLE CHANNELS

A. Fluidic reciprocal theorem

Let $\hat{\mathbf{v}}$, \hat{p} , and $\hat{\boldsymbol{\sigma}}_f$ denote, respectively, the velocity, pressure, and stress fields corresponding to the solution of the pressure-driven flow in a rigid (rectangular) channel, satisfying $\nabla \cdot \hat{\mathbf{v}} = 0$, $\nabla \cdot \hat{\boldsymbol{\sigma}}_f = \mathbf{0}$ with $\hat{\boldsymbol{\sigma}}_f = -\hat{p}\mathbf{I} + \mu[\nabla \hat{\mathbf{v}} + (\nabla \hat{\mathbf{v}})^T]$. To exploit the reciprocal theorem, we first expand the velocity, pressure, and stress fields into perturbation series in the dimensionless parameter $\beta = u_c/h_0 \ll 1$ controlling the compliance of the top wall,

$$\mathbf{v} = \hat{\mathbf{v}} + \beta \mathbf{v}_1 + O(\beta^2), \quad (5a)$$

$$p = \hat{p} + \beta p_1 + O(\beta^2), \quad (5b)$$

$$\boldsymbol{\sigma}_f = \hat{\boldsymbol{\sigma}}_f + \beta \boldsymbol{\sigma}_{f,1} + O(\beta^2), \quad (5c)$$

where \mathbf{v}_1 , p_1 , and $\boldsymbol{\sigma}_{f,1}$ are the first-order corrections to the velocity, pressure, and hydrodynamic stress in the *rectangular domain* due to the deformation of the top wall. From (1) and (5), it follows that the corresponding governing equations are the Stokes equations $\nabla \cdot \mathbf{v}_1 = 0$, $\nabla \cdot \boldsymbol{\sigma}_{f,1} = \mathbf{0}$. The Lorentz reciprocal theorem states that the two sets of velocity and stress fields $(\hat{\mathbf{v}}, \hat{\boldsymbol{\sigma}}_f)$ and $(\mathbf{v}_1, \boldsymbol{\sigma}_{f,1})$

satisfy [21]

$$\begin{aligned} & \int_{S_0} \mathbf{n} \cdot \boldsymbol{\sigma}_{f,1} \cdot \hat{\mathbf{v}} dS + \int_{S_\ell} \mathbf{n} \cdot \boldsymbol{\sigma}_{f,1} \cdot \hat{\mathbf{v}} dS + \underbrace{\int_{S_{\text{top}}} \mathbf{n} \cdot \boldsymbol{\sigma}_{f,1} \cdot \hat{\mathbf{v}} dS}_{=0} \\ &= \int_{S_0} \mathbf{n} \cdot \hat{\boldsymbol{\sigma}}_f \cdot \mathbf{v}_1 dS + \int_{S_\ell} \mathbf{n} \cdot \hat{\boldsymbol{\sigma}}_f \cdot \mathbf{v}_1 dS + \int_{S_{\text{top}}} \mathbf{n} \cdot \hat{\boldsymbol{\sigma}}_f \cdot \mathbf{v}_1 dS, \end{aligned} \quad (6)$$

where S_{top} is the lower surface of the top wall *in the undeformed state*, S_0 and S_ℓ are the surfaces at the inlet ($z = 0$) and outlet ($z = \ell$), respectively, and \mathbf{n} is the unit outward normal on a respective surface. Note that the integrals over the bottom and side walls of the channel vanish because $\hat{\mathbf{v}} = \mathbf{0}$ there. Also, the last term on the left-hand side of (6) vanishes because $\hat{\mathbf{v}} = \mathbf{0}$ on S_{top} .

Using the asymptotic expansion (5) and nondimensionalization (3), we obtain

$$\mathbf{n} \cdot \boldsymbol{\sigma}_{f,1} \cdot \hat{\mathbf{v}}|_{z=0,\ell} = \mp \frac{\mu v_c^2 \ell}{h_0^2} [-P_1 \hat{V}_z + O(\beta)]_{Z=0,1}, \quad (7a)$$

$$\mathbf{n} \cdot \hat{\boldsymbol{\sigma}}_f \cdot \mathbf{v}_1|_{z=0,\ell} = \mp \frac{\mu v_c^2 \ell}{h_0^2} [-\hat{P} V_{z,1} + O(\beta)]_{Z=0,1}, \quad (7b)$$

where the minus sign in (7) corresponds to S_0 and the plus sign corresponds to S_ℓ (see Refs. [34,35]).

Similarly, the integrand in the last term of (6), evaluated at $y = h_0$ (i.e., on S_{top}) with $\mathbf{n} = \mathbf{e}_y$ and $\mathbf{n} \cdot \hat{\boldsymbol{\sigma}}_f = \mu(\partial \hat{v}_z / \partial y) \mathbf{e}_z - \hat{p} \mathbf{e}_y$ is

$$\mathbf{n} \cdot \hat{\boldsymbol{\sigma}}_f \cdot \mathbf{v}_1|_{y=h_0} = \frac{\mu v_c^2}{h_0} \left[\frac{\partial \hat{V}_z}{\partial Y} V_{z,1} \right]_{Y=1}. \quad (8)$$

Note that the pressure term in $\mathbf{n} \cdot \hat{\boldsymbol{\sigma}}_f$ does not contribute to (8) because the leading-order flow is purely axial so that $\mathbf{v}_1 \cdot \mathbf{e}_y|_{y=h_0} = 0$ due to no penetration. We determine $V_{z,1}(X, Y = 1, Z)$ by applying the no-slip boundary condition, $V_z(X, Y = H(X, Z), Z) = 0$, and using (4) and (5a), together with the domain perturbation expansion in β introduced above, to obtain

$$V_z(X, H(X, Z), Z) = \hat{V}_z(X, 1, Z) + \beta \left(V_{z,1}(X, 1, Z) + U(X, Z) \frac{\partial \hat{V}_z}{\partial Y} \Big|_{Y=1} \right) + O(\beta^2) = 0. \quad (9)$$

It follows that $V_{z,1}(X, 1, Z) = -U(X, Z) \partial \hat{V}_z / \partial Y|_{Y=1}$. Thus, (8) reduces to

$$\mathbf{n} \cdot \hat{\boldsymbol{\sigma}}_f \cdot \mathbf{v}_1|_{y=h_0} = \frac{\mu v_c^2}{h_0} \left[\frac{\partial \hat{V}_z}{\partial Y} V_{z,1} \right]_{Y=1} = -\frac{\mu v_c^2}{h_0} U(X, Z) \left(\frac{\partial \hat{V}_z}{\partial Y} \Big|_{Y=1} \right)^2 + O(\beta). \quad (10)$$

Substituting (7) and (10) into (6), and using the outlet boundary condition $P_1(Z = 1) = \hat{P}(Z = 1) = 0$, we obtain

$$\int_0^1 \int_{-1/2}^{1/2} [P_1 \hat{V}_z - \hat{P} V_{z,1}]_{Z=0} dX dY = - \int_0^1 \int_{-1/2}^{1/2} \left[U(X, Z) \left(\frac{\partial \hat{V}_z}{\partial Y} \Big|_{Y=1} \right)^2 \right] dX dZ + O(\beta). \quad (11)$$

Noting that $P_1 = P_1(Z)$ and $\hat{P} = \hat{P}(Z)$ to the leading order in ϵ , consistent with the classical lubrication approximation [42], and $\int_0^1 \int_{-1/2}^{1/2} \hat{V}_z dX dY = 1$ and $\int_0^1 \int_{-1/2}^{1/2} V_{z,1} dX dY = 0$, (11) yields the first-order correction to the pressure drop, defined as $\Delta P_1 = P_1(Z = 0)$ for the weakly deformable channel ($\beta \ll 1$),

$$\Delta P_1 = - \int_0^1 \int_{-1/2}^{1/2} \left[U(X, Z) \left(\frac{\partial \hat{V}_z}{\partial Y} \Big|_{Y=1} \right)^2 \right] dX dZ. \quad (12)$$

Equation (12) is the first key result of this Letter, which allows the determination of the first-order correction to the pressure drop of the deformable channel, provided the top wall deformation $U(X, Z)$ is known. Therefore, in fact, (12) is not restricted to deformable channels and provides the first-order correction to the pressure drop for the three-dimensional rigid channel, whose top wall is nonuniform and has any prescribed shape variation expressed as $H(X, Z) = 1 + \beta U(X, Z)$.

B. Elastic reciprocal theorem

Let $\tilde{\mathbf{u}}$ and $\tilde{\boldsymbol{\sigma}}_s$ denote, respectively, the displacement and stress fields corresponding to the solution of the elastic problem in the same domain but with different boundary conditions on the stress or displacement fields. The corresponding governing equation is $\nabla \cdot \tilde{\boldsymbol{\sigma}}_s = \mathbf{0}$, with $\tilde{\boldsymbol{\sigma}}_s = \lambda(\nabla \cdot \tilde{\mathbf{u}})\mathbf{I} + 2G\tilde{\mathbf{D}}$. The Maxwell-Betti reciprocal theorem [36–38] states that the solutions $(\mathbf{u}, \boldsymbol{\sigma}_s)$ and $(\tilde{\mathbf{u}}, \tilde{\boldsymbol{\sigma}}_s)$ to the two elastostatic problems satisfy

$$\int_S \mathbf{n} \cdot \boldsymbol{\sigma}_s \cdot \tilde{\mathbf{u}} dS = \int_S \mathbf{n} \cdot \tilde{\boldsymbol{\sigma}}_s \cdot \mathbf{u} dS, \quad (13)$$

where \mathbf{n} is the unit outward normal to the bounding surfaces S of the elastic solid.

Before applying the elastic reciprocal theorem (13) to our elasto-hydrodynamic problem, recall a few assumptions we have made. First, in this problem, $\mathbf{u} = u_y(x, z)\mathbf{e}_y$ and $\tilde{\mathbf{u}} = \tilde{u}_y(x, z)\mathbf{e}_y$. Second, there is no displacement on the lateral walls of the solid. Third, the continuity of tractions $\mathbf{n} \cdot \boldsymbol{\sigma}_s = \mathbf{n} \cdot \boldsymbol{\sigma}_f$ holds at the fluid-solid interface $y = h(x, z)$. Lastly, we have assumed a stress-free condition at the upper surface of the top wall. Based on these assumptions, the terms $\mathbf{n} \cdot \boldsymbol{\sigma}_s \cdot \tilde{\mathbf{u}}$ and $\mathbf{n} \cdot \tilde{\boldsymbol{\sigma}}_s \cdot \mathbf{u}$ appearing in (13) are calculated as

$$\mathbf{n} \cdot \boldsymbol{\sigma}_s \cdot \tilde{\mathbf{u}}|_{y=h(x,z)} = \mathbf{n} \cdot \boldsymbol{\sigma}_f \cdot \tilde{\mathbf{u}}|_{y=h(x,z)} = p_c u_c [-P\tilde{U} + O(\epsilon)] = p_c u_c [-\hat{P}\tilde{U} + O(\epsilon, \beta)], \quad (14a)$$

$$\mathbf{n} \cdot \tilde{\boldsymbol{\sigma}}_s \cdot \mathbf{u}|_{y=h(x,z)} = \mathbf{n} \cdot \tilde{\boldsymbol{\sigma}}_f \cdot \mathbf{u}|_{y=h(x,z)} = p_c u_c [-\tilde{P}U + O(\epsilon)] = p_c u_c [-\hat{P}U + O(\epsilon, \beta)], \quad (14b)$$

where to obtain the last equality we used the domain perturbation expansion introduced above, i.e., $P = \hat{P} + O(\beta)$ and $\tilde{P} = \hat{P} + O(\beta)$. Substituting (14) into (13) leads to

$$\int_0^1 \int_{-1/2}^{1/2} \hat{P}U dX dZ = \int_0^1 \int_{-1/2}^{1/2} \hat{P}\tilde{U} dX dZ. \quad (15)$$

Next, we utilize the convolution principle to obtain an explicit expression for the deformation $U(X, Z)$ from (15). Choosing \hat{P} as a point load, i.e., $\hat{P} = \delta_D(X - \mathcal{X})\delta_D(Z - \mathcal{Z})$, applied on the fluid-solid interface at the point $(\mathcal{X}, \mathcal{Z})$, where δ_D is the Dirac-delta distribution, we obtain

$$U(X, Z) = \int_0^1 \int_{-1/2}^{1/2} \hat{P}(\mathcal{X}, \mathcal{Z})\tilde{U}(X, Z; \mathcal{X}, \mathcal{Z})d\mathcal{X} d\mathcal{Z}. \quad (16)$$

Here, $\tilde{U}(X, Z; \mathcal{X}, \mathcal{Z})$ is the point-load solution (or Green's function) of the elastic problem with appropriate boundary conditions under the aforementioned assumptions.

C. Flow rate-pressure drop relation for deformable channels using fluidic and elastic reciprocal theorems

Combining (12) and (16), we obtain the first-order correction to the pressure drop for the weakly deformable channel, $\beta \ll 1$, expressed using the fluidic and elastic reciprocal theorems,

$$\Delta P_1 = - \int_0^1 \int_{-1/2}^{1/2} \left[\int_0^1 \int_{-1/2}^{1/2} \hat{P}(\mathcal{X}, \mathcal{Z})\tilde{U}(X, Z; \mathcal{X}, \mathcal{Z})d\mathcal{X} d\mathcal{Z} \left(\frac{\partial \hat{V}_z}{\partial Y} \Big|_{Y=1} \right)^2 \right] dX dZ. \quad (17)$$

Equation (17) is the second key result of this Letter, clearly indicating that the first-order correction to the pressure drop arises due to the interplay between the fluid stresses and the compliance of

the channel. Furthermore, (17) shows that ΔP_1 depends only on the solution of the pressure-driven flow in a rigid channel for the fluid problem (hat) and the solution of the elastic deformation for a point-load (tilde), thus, eliminating the need to *a priori* solve the coupled elasto-hydrodynamic problem.

The dimensionless pressure drop is, thus, $\Delta P = \Delta \hat{P} + \beta \Delta P_1 + O(\beta^2)$, where the solution of the corresponding pressure-driven flow in a rigid (rectangular) channel [43] is well known,

$$\hat{P}(Z) = \frac{12}{1 - \kappa(\delta)}(1 - Z), \quad \Delta \hat{P} = \frac{12}{1 - \kappa(\delta)}, \quad (18a)$$

$$\hat{V}_z(X, Y) = \frac{12}{1 - \kappa(\delta)} \left[\frac{1}{2}(1 - Y)Y - \frac{4}{\pi^3} \sum_{n=1}^{\infty} \frac{1}{(2n - 1)^3} \frac{\cosh[(2n - 1)\pi X/\delta]}{\cosh[(2n - 1)\pi/(2\delta)]} \sin[(2n - 1)\pi Y] \right], \quad (18b)$$

$$\kappa(\delta) = \frac{192}{\pi^5} \sum_{n=1}^{\infty} \frac{1}{(2n - 1)^5} \delta \tanh \left[\frac{(2n - 1)\pi}{2\delta} \right]. \quad (18c)$$

IV. ILLUSTRATED EXAMPLE

In this section, we illustrate an application of our results towards calculating the first-order-in- β correction to the pressure drop in a slender compliant channel. For this example and for simplicity, we model the compliance of the top wall using the plate-bending theory. Under the assumptions that the maximum displacement of the top wall is small compared to its thickness b , and the thickness b is small compared to its width w , $\max_{x,z}[u_y(x, z)] \ll b \ll w$, the steady-state displacement $u_y(x, y)$ satisfies the Kirchhoff-Love equation for isotropic bending of a plate under a transverse load supplied by the fluid pressure, i.e., $p = B\nabla_{\parallel}^4 u_y$ [40,41,44]. Here, $B = Eb^3/[12(1 - \nu^2)]$ is the bending stiffness, and ∇_{\parallel}^4 is the biharmonic operator in the (x, z) plane.

Using (3) and performing an order-of-magnitude analysis, we obtain $u_c = w^4 p_c/B = w^3 \mu q \ell / (h_0^3 B)$ and, thus, $\beta = u_c/h_0 = w^4 p_c / (B h_0) = w^3 \mu q \ell / (h_0^4 B)$. Furthermore, it follows that $P(Z) = \partial^4 U / \partial X^4 + O(\epsilon^2/\delta^2)$ [14,39], where $0 \ll \epsilon \ll \min(1, \delta)$ but $\delta = h_0/w$ is not necessarily small. The Green's function corresponding to the point-load solution of the latter equation with clamped boundary conditions [45], i.e., $U|_{X=\pm 1/2} = \partial U / \partial X|_{X=\pm 1/2} = 0$, is

$$\tilde{U}(X, Z; \mathcal{X}, \mathcal{Z}) = \frac{1}{24} \left(X - \frac{1}{2} \right)^2 \left(X + \frac{1}{2} \right)^2 \delta_D(Z - \mathcal{Z}). \quad (19)$$

Using (18) and (19), (17) provides the first-order correction to the pressure drop for arbitrary value of $\delta = h_0/w$. We note that it is difficult to obtain a closed-form expression for ΔP_1 , which holds for any $\delta = h_0/w$ because of the velocity profile (18b) is represented as an infinite series. While the Z integration can be performed analytically, the X integration is performed numerically. However, for $\delta \ll 1$, from (18) it follows that $\Delta \hat{P} = 12$, $\hat{P}(Z) = 12(1 - Z)$, and $\hat{V}_z(Y) = 6(1 - Y)Y$, and substituting these results and (19) into (17) yields $\Delta P_1/12 = -3/120$ so that $\Delta P/12 = 1 - (3/120)\beta + O(\beta^2) = 1 - (3/5)\tilde{\beta} + O(\tilde{\beta}^2)$, where $\tilde{\beta} = \beta/24 = w^4 p_c / (24 B h_0) = w^3 \mu q \ell / (24 h_0^4 B)$.

It is instructive to compare the latter result to the solution for the dimensionless pressure drop previously derived by Christov *et al.* [14] using lubrication theory. The result from [14], holding for $\delta \ll 1$ and $\tilde{\beta} = O(1)$, is expressed as an implicit relation,

$$12 = \Delta P \left[1 + \frac{\tilde{\beta}}{20} \Delta P + \frac{\tilde{\beta}^2}{630} (\Delta P)^2 + \frac{\tilde{\beta}^3}{48048} (\Delta P)^3 \right] \quad (\text{lubrication theory for } \delta \ll 1), \quad (20)$$

and it also yields $\Delta P/12 = 1 - (3/5)\tilde{\beta} + (86/175)\tilde{\beta}^2 + O(\tilde{\beta}^3)$ for $\beta \ll 1$, upon solving for the positive real root of (20). Observe that this expression is identical to the present asymptotic solution for the pressure drop to first order in $\tilde{\beta}$.

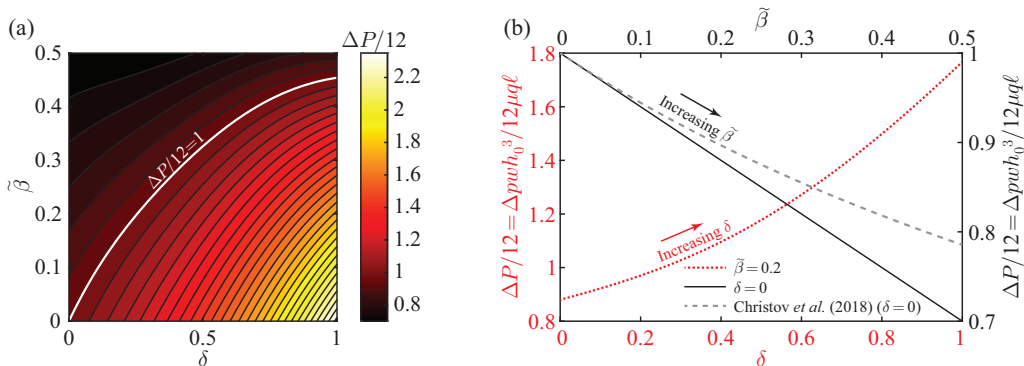


FIG. 2. Dimensionless pressure drop $\Delta P/12 = \Delta p w h_0^3 / 12 \mu q \ell$ in a deformable channel modeled using the plate-bending theory. (a) Contour plot of the dimensionless pressure drop as a function of $\tilde{\beta} = u_c/24h_0$ and $\delta = h_0/w$. (b) Dimensionless pressure drop as a function of $\delta = h_0/w$ (dotted line) for $\tilde{\beta} = 0.2$ and as a function of $\tilde{\beta} = u_c/24h_0$ (solid and dashed curves) for $\delta = 0$. The solid line represents the first-order asymptotic solution, and the dashed line represents the solution based on the lubrication theory (also for $\delta = 0$), derived by Christov *et al.* [14].

In Fig. 2(a), we present a contour plot of the dimensionless pressure drop accounting for the first-order correction due to fluid-structure interaction as a function of $\tilde{\beta} = u_c/24h_0$ and $\delta = h_0/w$ for a deformable channel modeled using the plate-bending theory. Figure 2(a) clearly indicates the existence of the trade-off between the effect of compliance of the deforming top wall and the effect of drag due to the sidewalls on the pressure drop. Whereas the pressure drop decreases with $\tilde{\beta}$, it increases with δ . The white (light) solid curve $\Delta P/12 = 1$ divides the color map into two regions: In the upper region, the compliance dominates over the sidewall effects and, thus, $\Delta P/12 < 1$, whereas in the lower region, the sidewall drag is dominant and $\Delta P/12 > 1$.

Next, in Fig. 2(b), we show a comparison of our analytical predictions and the lubrication-theory-based solution (20) for the nondimensional pressure drop as a function of $\tilde{\beta}$ for $\delta = 0$ (an infinitely wide channel). The black solid line represents our first-order asymptotic solution, $\Delta P/12 = 1 - (3/5)\tilde{\beta} + O(\tilde{\beta}^2)$, and the gray dashed curve represents the lubrication solution (20). It is evident from Fig. 2(b) that our first-order asymptotic solution, which is strictly valid for $\tilde{\beta} \ll 1$, slightly underpredicts the lubrication solution; yet even for $\tilde{\beta} = 0.5$, it results in a modest relative error of approximately 10%. For further clarification, the dotted (red) curve shows the dimensionless pressure drop as a function of $\delta = h_0/w$ for $\tilde{\beta} = 0.2$, clearly indicating that, whereas wall compliance decreases the pressure drop, drag due to the sidewalls increases it.

V. CONCLUDING REMARKS

In this Letter, we showed how the reciprocal theorems for Stokes flow and linear elasticity can be used to derive a closed-form expression for leading-order correction due to deformation to the flow rate-pressure drop relation for rectangular channels. Using a domain perturbation approach and considering small deformation, our theory captures the interplay between the fluid stresses and the compliance of the channel's top wall, bypassing the need to calculate the solution of the coupled fluid-structure-interaction problem. Furthermore, unlike previous theoretical studies, which neglected the presence of lateral sidewalls (and considered shallow geometries of effectively infinite width within the lubrication approximation), our approach allows the determination of the influence of confining sidewalls on the $q - \Delta p$ relation.

The present theoretical approach is not limited to the case of a three-dimensional channel of an initially rectangular cross section, and it could also be applied to calculate the first-order correction to the pressure drop in axisymmetric deformable tubes for which the leading-order pressure drop is given by the classical Hagen-Poiseuille law [46]. Finally, while we considered viscous Newtonian

fluids, it would be of interest to understand how the rheological response of complex fluids (such as shear thinning and viscoelasticity) influences the flow rate-pressure drop relation in deformable channels. One convenient approach to accomplish this task would be to rely on reciprocal theorems and use a combination of the present approach and the approach recently established by Boyko and Stone [34,35] for calculating the effect of complex fluid rheology on the flow rate-pressure drop relation for rigid nonuniform channels. These calculations are left for future investigation.

ACKNOWLEDGMENTS

E.B. acknowledges support of the Yad Hanadiv (Rothschild) Foundation, the Zuckerman STEM Leadership Program, and the Lillian Gilbreth Postdoctoral Fellowship from Purdue's College of Engineering. H.A.S. is grateful for partial support of the work via NSF Grant No. CBET-2127563. I.C.C. acknowledges partial support by the NSF under Grant No. CBET-1705637 in the early stages of this work.

- [1] T. Gervais, J. El-Ali, A. Günther, and K. F. Jensen, Flow-induced deformation of shallow microfluidic channels, *Lab Chip* **6**, 500 (2006).
- [2] E. Seker, D. C. Leslie, H. Haj-Hariri, J. P. Landers, M. Utz, and M. R. Begley, Nonlinear pressure-flow relationships for passive microfluidic valves, *Lab Chip* **9**, 2691 (2009).
- [3] I. C. Christov, Soft hydraulics: from Newtonian to complex fluid flows through compliant conduits, *J. Phys.: Condens. Matter* **34**, 063001 (2022).
- [4] T. Thorsen, S. J. Maerkl, and S. R. Quake, Microfluidic large-scale integration, *Science* **298**, 580 (2002).
- [5] M. Gomez, D. E. Moulton, and D. Vella, Passive Control of Viscous Flow via Elastic Snap-Through, *Phys. Rev. Lett.* **119**, 144502 (2017).
- [6] K. Hosokawa, K. Hanada, and R. Maeda, A polydimethylsiloxane (PDMS) deformable diffraction grating for monitoring of local pressure in microfluidic devices, *J. Microelectromechan. Syst.* **12**, 1 (2002).
- [7] O. Ozsun, V. Yakhot, and K. L. Ekinci, Non-invasive measurement of the pressure distribution in a deformable micro-channel, *J. Fluid Mech.* **734**, R1 (2013).
- [8] P. Polygerinos, N. Correll, S. A. Morin, B. Mosadegh, C. D. Onal, K. Petersen, M. Cianchetti, M. T. Tolley, and R. F. Shepherd, Soft robotics: Review of fluid-driven intrinsically soft devices; manufacturing, sensing, control, and applications in human-robot interaction, *Adv. Eng. Mater.* **19**, 1700016 (2017).
- [9] Y. Matia, T. Elimelech, and A. D. Gat, Leveraging internal viscous flow to extend the capabilities of beam-shaped soft robotic actuators, *Soft Robotics* **4**, 126 (2017).
- [10] A. Vurgaft, S. B. Elbaz, and A. D. Gat, Forced motion of a cylinder within a liquid-filled elastic tube—a model of minimally invasive medical procedures, *J. Fluid Mech.* **881**, 1048 (2019).
- [11] D. Chakraborty, J. R. Prakash, J. Friend, and L. Yeo, Fluid-structure interaction in deformable microchannels, *Phys. Fluids* **24**, 102002 (2012).
- [12] S. I. Rubinow and J. B. Keller, Flow of a viscous fluid through an elastic tube with applications to blood flow, *J. Theor. Biol.* **35**, 299 (1972).
- [13] A. H. Shapiro, Steady flow in collapsible tubes, *ASME J. Biomech. Eng.* **99**, 126 (1977).
- [14] I. C. Christov, V. Cognet, T. C. Shidhore, and H. A. Stone, Flow rate–pressure drop relation for deformable shallow microfluidic channels, *J. Fluid Mech.* **841**, 267 (2018).
- [15] T. Shidhore and I. C. Christov, Static response of deformable microchannels: a comparative modelling study, *J. Phys.: Condens. Matter* **30**, 054002 (2018).
- [16] V. Anand, J. D. J. Rathinaraj, and I. C. Christov, Non-Newtonian fluid–structure interactions: Static response of a microchannel due to internal flow of a power-law fluid, *J. Non-Newtonian Fluid Mech.* **264**, 62 (2019).
- [17] A. Mehboudi and J. Yeom, Experimental and theoretical investigation of a low-Reynolds-number flow through deformable shallow microchannels with ultra-low height-to-width aspect ratios, *Microfluid. Nanofluid.* **23**, 66 (2019).

- [18] X. Wang and I. C. Christov, Theory of the flow-induced deformation of shallow compliant microchannels with thick walls, *Proc. R. Soc. London, Ser. A* **475**, 20190513 (2019).
- [19] L. Ramos-Arzola and O. Bautista, Fluid structure-interaction in a deformable microchannel conveying a viscoelastic fluid, *J. Non-Newtonian Fluid Mech.* **296**, 104634 (2021).
- [20] H. A. Lorentz, A general theorem concerning the motion of a viscous fluid and a few consequences derived from it (in Dutch), *Versl. Konigl. Akad. Wetensch. Amst.* **5**, 168 (1896).
- [21] J. Happel and H. Brenner, *Low Reynolds Number Hydrodynamics* (Martinus Nijhoff Publishers, The Hague, 1983).
- [22] H. Masoud and H. A. Stone, The reciprocal theorem in fluid dynamics and transport phenomena, *J. Fluid Mech.* **879**, P1 (2019).
- [23] C. Berdan II and L. G. Leal, Motion of a sphere in the presence of a deformable interface, I: Perturbation of the interface from flat: the effects on drag and torque, *J. Colloid Interface Sci.* **87**, 62 (1982).
- [24] V. A. Shaik and A. M. Ardekani, Motion of a model swimmer near a weakly deforming interface, *J. Fluid Mech.* **824**, 42 (2017).
- [25] B. Rallabandi, B. Saintyves, T. Jules, T. Salez, C. Schönecker, L. Mahadevan, and H. A. Stone, Rotation of an immersed cylinder sliding near a thin elastic coating, *Phys. Rev. Fluids* **2**, 074102 (2017).
- [26] B. Rallabandi, N. Oppenheimer, M. Y. Ben Zion, and H. A. Stone, Membrane-induced hydroelastic migration of a particle surfing its own wave, *Nat. Phys.* **14**, 1211 (2018).
- [27] A. Daddi-Moussa-Ider, B. Rallabandi, S. Gekle, and H. A. Stone, Reciprocal theorem for the prediction of the normal force induced on a particle translating parallel to an elastic membrane, *Phys. Rev. Fluids* **3**, 084101 (2018).
- [28] A. Kargar-Estahbanati and B. Rallabandi, Lift forces on three-dimensional elastic and viscoelastic lubricated contacts, *Phys. Rev. Fluids* **6**, 034003 (2021).
- [29] V. Bertin, Y. Amarouchene, E. Raphael, and T. Salez, Soft-lubrication interactions between a rigid sphere and an elastic wall, *J. Fluid Mech.* **933**, A23 (2022).
- [30] L. G. Leal, The motion of small particles in non-Newtonian fluids, *J. Non-Newtonian Fluid Mech.* **5**, 33 (1979).
- [31] L. G. Leal, Particle motions in a viscous fluid, *Annu. Rev. Fluid Mech.* **12**, 435 (1980).
- [32] R. F. Day and H. A. Stone, Lubrication analysis and boundary integral simulations of a viscous micropump, *J. Fluid Mech.* **416**, 197 (2000).
- [33] S. Michelin and E. Lauga, A reciprocal theorem for boundary-driven channel flows, *Phys. Fluids* **27**, 111701 (2015).
- [34] E. Boyko and H. A. Stone, Reciprocal theorem for calculating the flow rate–pressure drop relation for complex fluids in narrow geometries, *Phys. Rev. Fluids* **6**, L081301 (2021).
- [35] E. Boyko and H. A. Stone, Pressure-driven flow of the viscoelastic Oldroyd-B fluid in narrow non-uniform geometries: analytical results and comparison with simulations, *J. Fluid Mech.* **936**, A23 (2022).
- [36] J. C. Maxwell, On the calculation of the equilibrium and stiffness of frames, *The London, Edinburgh, and Dublin Philosophical Magazine and Journal of Science* **27**, 294 (1864).
- [37] E. Betti, Teoria della elasticità, *Il Nuovo Cimento* **7-8**, 69 (1872).
- [38] J. D. Achenbach, *Reciprocity in Elastodynamics* (Cambridge University Press, Cambridge, UK, 2003).
- [39] A. Martínez-Calvo, A. Sevilla, G. G. Peng, and H. A. Stone, Start-up flow in shallow deformable microchannels, *J. Fluid Mech.* **885**, A25 (2020).
- [40] S. Timoshenko and S. Woinowsky-Krieger, *Theory of Plates and Shells* (McGraw-Hill, New York, 1987).
- [41] P. Howell, G. Kozyreff, and J. Ockendon, *Applied Solid Mechanics*, Cambridge Texts in Applied Mathematics No. 43 (Cambridge University Press, Cambridge, UK, 2009).
- [42] L. G. Leal, *Advanced Transport Phenomena: Fluid Mechanics and Convective Transport Processes* (Cambridge University Press, Cambridge, UK, 2007).
- [43] H. Bruus, *Theoretical Microfluidics* (Oxford University Press, Oxford, 2008).
- [44] A. E. H. Love, The small free vibrations and deformation of a thin elastic shell, *Philos. Trans. R. Soc., London, Ser. A* **179**, 491 (1888).
- [45] D. G. Duffy, *Green's Functions with Applications* (Chapman and Hall/CRC, Boca Raton, FL, 2015).
- [46] S. P. Sutera and R. Skalak, The history of Poiseuille's law, *Annu. Rev. Fluid Mech.* **25**, 1 (1993).