

Entrainment into particle-laden turbulent plumes

Craig D. McConnochie ^{*}

*Department of Civil and Natural Resources Engineering, University of Canterbury,
Christchurch 8140, New Zealand*

Claudia Cenedese 

*Physical Oceanography Department, Woods Hole Oceanographic Institution,
Woods Hole, Massachusetts 02543, USA*

Jim N. McElwaine 

*Department of Earth Sciences, University of Durham, Durham DH1 3LE, United Kingdom
and Planetary Science Institute, Tucson, Arizona 85719, USA*



(Received 10 June 2021; accepted 3 December 2021; published 23 December 2021)

We use laboratory experiments to investigate the entrainment of ambient fluid into an axisymmetric turbulent plume containing dense particles with a settling velocity that is considerably smaller than the plume velocity. We consider the effect of particle size, particle concentration, and the orientation of the plume buoyancy flux—in either the same or opposite direction to the particle buoyancy flux. When the plume buoyancy flux is in the opposite direction to the particle buoyancy flux, entrainment into the plume increases by up to 40%. The rate of entrainment increases linearly with the ratio of particle buoyancy flux to fluid buoyancy flux but does not depend on the particle size for the range of particle sizes investigated here. In contrast, when the plume buoyancy flux is in the same direction as the particle buoyancy flux, entrainment into the plume is unaffected by the addition of particles. The observed increase in entrainment, when the plume and particle buoyancy fluxes are in opposite directions, is consistent with inertial clustering whereby particles are ejected from regions of relatively high vorticity and accumulate in regions of relatively high strain rate within the turbulent flow field. Regions with high particle concentration can then experience convective instabilities that affect the entrainment of ambient fluid into the plume. The differing behavior observed based on the plume buoyancy flux orientation is also consistent with the above mechanism. Finally, based on the laboratory findings, we propose an expression for the entrainment coefficient to take into account the effect of suspended particles of opposing buoyancy flux to the plume buoyancy flux.

DOI: [10.1103/PhysRevFluids.6.123502](https://doi.org/10.1103/PhysRevFluids.6.123502)

I. INTRODUCTION

Turbulent multiphase flows are common in a wide variety of geophysical and engineering situations such as volcanic clouds, aerosol particles in air, bubble plumes, and fires. Often the particle phase is treated as a passive tracer, potentially with the addition of a settling or rising velocity. However, in cases where the particle and fluid phases have significantly different densities, finite Stokes number effects can lead to complex and interesting interactions including inertial clustering (for a review of turbulent multiphase flow see [1]).

^{*}craig.mcconnochie@canterbury.ac.nz

Our focus in this paper is on dilute suspensions of relatively dense solid particles in an axisymmetric turbulent plume. This focus is motivated by the numerous geophysical cases where dense sediment particles are carried by a turbulent plume, of either water or air, such as volcanos or the subglacial plumes that form around Greenland [2]. We note a distinction between the particle-laden plumes which we focus on and the more commonly studied particle plumes [3,4]. Within a particle-laden plume, both the continuous fluid phase and the discrete particle phase contribute to the plume buoyancy flux, whereas particle plumes are generally considered to have zero buoyancy flux associated with the fluid phase.

Motivated by volcanic eruptions, many studies of particle-laden plumes have focused on the resulting particle deposition. The potential reentrainment of particles into the rising plume has been a particular focus. To facilitate particle deposition from a spreading intrusion, these studies have typically considered the behavior after a plume has reached the free surface of an experimental tank [5–7], or that of a plume rising through a stratified ambient such that it reaches a neutral density [8]. In contrast to this earlier work, we consider the effect of particles on a rising particle-laden plume when particle reentrainment is not important such as during the early stages of plume development or when the sinking flow is spatially separated from the rising flow [9].

In turbulent particle-laden flows, the particle distribution tends to become nonuniform through a process that has been termed inertial clustering or preferential clustering. The higher inertia of the particle phase relative to the fluid phase results in particles being ejected from regions of high vorticity and accumulating in regions of high strain rate within the turbulent flow field [1].

Inertial clustering has generally been considered to be most important when the particle Stokes number is of order 1 [10], where the particle Stokes number is defined as

$$St = \tau_p/T, \quad (1)$$

where $\tau_p = \rho_p d_p^2 / 18\mu$ is the characteristic particle response timescale, ρ_p is the particle density, d_p is the particle diameter, μ is the fluid dynamic viscosity, and T is a characteristic timescale of the flow.

If a flow has a broad range of timescales then there will be no clustering at the smallest timescales where $St \gg 1$, there will be the most clustering at intermediate timescales where $St = O(1)$, and there will again be no clustering at large timescales where $St \ll 1$ [11,12]. In any particular flow this complete range may or may not exist.

Due to inertial clustering and several other mechanisms, the addition of particles can modulate the turbulent properties of a flow [1]. In turbulent plumes, one of the most important effects of turbulence is to entrain ambient fluid into the plume. This process is typically modelled by an entrainment coefficient defined as $\alpha = u_e/u$ where u_e is the velocity with which ambient fluid is drawn into the plume and u is the characteristic plume velocity [13]. Typically the value of the entrainment coefficient has been found to be constant and approximately equal to 0.12 [14]. However, the applicability of this value has not been tested in the case of a particle-laden plume with clustering of particles. In this case turbulence modulation by the particle phase could alter the entrainment of ambient fluid into the plume.

In this paper we use measurements of the plume volume flux as a function of distance from the source to infer the entrainment coefficient for a variety of particle loadings. The inferred entrainment coefficients will be used to diagnose whether turbulence modulation by suspended particles is significant to the entrainment of ambient fluid into a turbulent plume. In Sec. II we summarize the equations regulating the fluid and particle motion. In Sec. III we describe the laboratory experiments that were conducted to measure the entrainment coefficient for a variety of particle sizes and concentrations and in Sec. IV we present the results of those experiments. In Sec. V we discuss the results and the potential physical mechanisms behind them. Finally, in Sec. VI we summarize the study and highlight some open questions.

II. THEORY

A. Conservation equations for a turbulent axisymmetric plume

Turbulent axisymmetric plumes are frequently modeled by the conservation equations for volume flux $Q = \pi b^2 u$, specific momentum flux $M = \pi b^2 u^2$, and buoyancy flux $B = \pi b^2 g' u$ [13]:

$$\frac{dQ}{dz} = 2\pi b u_e, \quad (2)$$

$$\frac{dM}{dz} = \pi b^2 g', \quad (3)$$

$$\frac{dB}{dz} = 0. \quad (4)$$

Here b is the the top-hat plume width, u is the top-hat plume velocity, $g' = g(\rho_a - \rho_f)/\rho_a$ is the top-hat reduced gravity, g is the acceleration due to gravity, ρ_f is the plume fluid density, ρ_a is the ambient fluid density, and $u_e = \alpha u$ is the velocity with which ambient fluid is entrained into the plume. The key parameter in terms of the development of plume properties is the entrainment coefficient, α , and finding a suitable value has been the subject of a wide body of work over the past decades. Carazzo *et al.* [14] tabulate a range of studies investigating the value of the entrainment coefficient in turbulent plumes and report typical measurements in the range of 0.12–0.13.

Despite the near ubiquity of the above model in studies of jets and plumes, it is informative to consider an alternate model of plume behavior. As described above, Morton *et al.* [13] considered the conservation of volume flux, momentum flux, and buoyancy flux and used an entrainment coefficient to model the entrainment velocity. In contrast Priestley and Ball [15] considered the conservation of momentum flux, buoyancy flux, and mean kinetic energy flux and used a parameterisation of turbulent kinetic energy production. It has been shown that these models are somewhat equivalent but that the latter model gives an entrainment coefficient that is explicitly a function of the plume forcing [16]:

$$\alpha = \alpha_j + (\alpha_p - \alpha_j)\Gamma, \quad (5)$$

where α_j is the entrainment coefficient of a pure jet, α_p is the entrainment coefficient of a pure plume, $\Gamma = \text{Ri}/\text{Ri}_p$ is the ratio between the bulk Richardson number of the flow and the bulk Richardson number of a pure plume, $\text{Ri} = bg'/w^2 = BQ^2/\theta M^{5/2}$, and θ is a profile coefficient of the momentum field (for a detailed description see [17]).

Equation (5) separates the entrainment coefficient into two components. The first component is common to both jets and plumes and is independent of buoyancy. The second component is related to the buoyancy forcing of a plume as described by Ri . Recent analysis has directly considered the energetics of a plume in order to gain a better understanding of these two components [17]. It was found that the first component, common to both jets and plumes, is associated with turbulent kinetic energy production while the second component is due to the buoyancy of the flow. A third process which can lead to further entrainment is associated with streamwise changes in the profiles of velocity and buoyancy. This third component is zero if the flow is self-similar but can be important for unsteady flows [18] or for steady flows close to the source [14,19]. The key implication of this energetics based understanding of the entrainment coefficient is that it elucidates three processes whereby the entrainment coefficient could be altered by suspended particles: changing the turbulent kinetic production, changing the mean flow buoyancy structure, or causing streamwise changes in the velocity and buoyancy profiles.

In addition to the plume processes mentioned above, the flow geometry can also have a significant impact on the entrainment coefficient. For example, measurements of the entrainment coefficient in a two-dimensional line plume have given values of approximately 0.22 [20], while line plumes adjacent to walls have significantly reduced entrainment coefficients of approximately 0.076 [21,22]. Despite the importance of the entrainment coefficient to plume models and the range of conditions

that have been shown to alter its value, we are not aware of any attempt to investigate the effect of suspended particles on the entrainment coefficient of a turbulent plume.

B. Inertial effects on particle motion

We will consider the motion of a particle in a Boussinesq, Newtonian fluid at a low particle Reynolds number

$$\text{Re}_p = \frac{d_p v_s}{\nu}, \quad (6)$$

where v_s is the particle settling velocity, $\nu = \mu/\rho$ is the kinematic viscosity of the fluid, and ρ is the plume fluid density. The velocity of such particles is governed by the Basset-Boussinesq-Oseen equation

$$\dot{\mathbf{v}} = \mathbf{g} + \frac{1}{\text{St}} \frac{\mathbf{u} - \mathbf{v}}{T} + \frac{1}{2} \beta (\dot{\mathbf{u}} - \dot{\mathbf{v}}) - \beta \frac{\nabla p}{\rho_f} + 3 \sqrt{\frac{\beta}{2\pi \text{St}}} \int^t \frac{\dot{\mathbf{u}} - \dot{\mathbf{v}}}{\sqrt{T} \sqrt{t - t'}} dt'. \quad (7)$$

In Eq. (7), \mathbf{u} and \mathbf{v} are the fluid and particle velocity vectors respectively, $\dot{\mathbf{u}} = \frac{\partial \mathbf{u}}{\partial t} + \mathbf{u} \cdot \nabla \mathbf{u}$, $\dot{\mathbf{v}} = \frac{\partial \mathbf{v}}{\partial t}$, \mathbf{g} is the gravity vector, T is a characteristic timescale of the flow, $\beta = \rho_f/\rho_p$ is the ratio between the fluid and particle densities, and ∇p is the pressure gradient. The terms on the right hand side of Eq. (7) are, in order, gravity, drag, added mass, the Froude-Krylov force, and the Basset force. We note that since St and T are always multiplied by one another, Eq. (7) can be rewritten in terms of the particle response timescale, τ_p , rather than St and T . Therefore, the choice of a fluid timescale is unimportant in Eq. (7) provided the same timescale is used as in the definition of the Stokes number.

Considering the physical situation that we are interested in—particles that are carried within a turbulent plume—physical scales can be defined in order to nondimensionalize Eq. (7). The plume velocity U and diameter D at the source are used as the velocity and length scale while the plume fluid density ρ_f is used as the density scale. We note that in order for U and D to be finite we are not considering a point source plume but rather a plume that starts with an initial volume, momentum, and buoyancy flux. U , D , and ρ_f can be combined to form a timescale ($T = D/U$) and a pressure scale ($P = U^2 \rho_f$). Using these scales, Eq. (7) can be rewritten in nondimensional form as

$$\dot{\tilde{\mathbf{v}}} = \tilde{\mathbf{g}}(1 - \beta) + \frac{1}{\text{St}} (\tilde{\mathbf{u}} - \tilde{\mathbf{v}}) + \frac{1}{2} \beta (\dot{\tilde{\mathbf{u}}} - \dot{\tilde{\mathbf{v}}}) - \beta \nabla \tilde{p} + \frac{3}{4} \sqrt{\frac{\beta}{2\pi \text{St}}} \int^{\tilde{t}} \frac{\dot{\tilde{\mathbf{u}}} - \dot{\tilde{\mathbf{v}}}}{\sqrt{\tilde{t} - \tilde{t}'}} d\tilde{t}', \quad (8)$$

where $\tilde{\cdot}$ refers to a nondimensional quantity. For the remainder of this section all variables will be nondimensional and we will not retain the $\tilde{\cdot}$ notation. For small values of St , and assuming the decay of any initial transient velocities, a power series solution to Eq. (8) can be written as

$$\mathbf{v} = \mathbf{u} + \text{St}[\mathbf{g}(1 - \beta) - \dot{\mathbf{u}}] - \beta \text{St} \nabla p + O(\text{St}^{3/2}). \quad (9)$$

At this order, neither the Basset force term nor the added mass term are present.

Assuming that the fluid is incompressible such that $\nabla \cdot \mathbf{u} = 0$, the divergence of the particle velocity, to $O(\text{St}^{3/2})$, is

$$\nabla \cdot \mathbf{v} = -\text{St}(q + \beta \nabla^2 p), \quad (10)$$

where $q = |S|^2 - |\Omega|^2$ is the Okubo-Weiss parameter, $S = (L + L^T)/2$ is the strain rate tensor, $\Omega = (L - L^T)/2$ is the rotation tensor, and $L = \nabla \mathbf{u}$. Taking the divergence of the Navier-Stokes equations leads to $\nabla^2 p = -q$ which allows Eq. (10) to be rewritten as

$$\nabla \cdot \mathbf{v} = -\text{St} q(1 - \beta). \quad (11)$$

Equation (11) indicates that particles that are heavier than the fluid ($\beta < 1$) will concentrate in regions where the strain rate is large compared to the vorticity (where $|S|^2 > |\Omega|^2$), since in these regions $q > 0$ and $\nabla \cdot \mathbf{v} < 0$. This is the underlying justification for inertial clustering which was introduced earlier as a mechanism by which particles can modulate turbulence [1]. Inertial clustering occurs as the higher inertia of the particle phase relative to the fluid phase causes particles to be

ejected from regions of relatively high vorticity ($q < 0$) and to accumulate in regions of relatively high strain rate ($q > 0$) within the turbulent field.

The plume fluid equations, Eqs. (2)–(4), and the particle equation, Eq. (7), are coupled by assuming that the particles are affected by the fluid field through Eq. (7), and that the fluid field is affected by the particles only through the buoyancy term—i.e., the fluid density, ρ_f , in the reduced gravity, g' , is replaced by the density of the fluid-particle mixture. Such an assumption is valid if the particle concentration is low but may cease to be true as particles cluster based on Eq. (11). This mechanism increases inhomogeneities in the buoyancy field which forces the velocity field, increasing turbulent kinetic energy and hence the entrainment coefficient. One manifestation of this process is convective instability which occurs with sufficiently large vertical variations in particle concentration.

III. METHODOLOGY

A. Experimental process

Two sets of experiments were conducted to investigate the effect of suspended particles on the entrainment coefficient of a turbulent plume. The first set considered the case where the particle buoyancy flux acted in the opposite direction to the fluid buoyancy flux and the second set considered the case where the two buoyancy flux components acted in the same direction. Details of all experiments are provided in Table I. Both sets of experiments measured the entrainment coefficient using a method that was similar to that used in Cenedese and Linden [23]. The method is based on the “filling box” technique described in Baines [24]. The canonical filling box describes the propagation of a density interface through a sealed space due to a sustained turbulent plume [25]. This density interface has traditionally been referred to as the first front. Baines [24] showed that if a displacement flow was added through the space, the first front will be arrested at the height where the plume volume flux is equal to the displacement volume flux. By iteratively changing the displacement volume flux, the plume volume flux can be measured as a function of height. Cenedese and Linden [23] adapted this technique by first establishing a sharp density interface that was easily observable, and then using the vertical velocity of the first front in a filling box configuration to calculate the plume volume flux as a function of height. The variation of plume volume flux with height gives the entrained volume flux which can be related to the entrainment coefficient. In the experiments presented here, we have used the considerably faster method described by Cenedese and Linden [23] to measure the entrainment coefficient of the plume.

All experiments were conducted in a tank with a 40 cm square cross section and a height of 70 cm. A projector was placed 7.0 m behind the tank and the shadowgraph technique was used to visualize the experiment. This allowed both the turbulent plume and the ambient stratification to be visualized over the course of an experiment.

A schematic of the experimental tank is shown in Fig. 1. The tank was fitted with two sources of fluid at the base of the tank, Q_d and Q_s . One of these (Q_s) was used to produce the turbulent plume and was placed in the center of the tank and oriented vertically upward. It was designed such that the plume was turbulent upon leaving the source [see 23]. The radius of the source was 0.27 cm and the source volume flux is provided in Table I. Selection of the source volume flux required a balance between minimising the momentum jet length, maintaining turbulence within the plume immediately from the source, and, particularly at large particle concentrations, avoiding particles becoming trapped within the tubing leading to the source. As shown in Table I, experiments were conducted with two different nominal source volume fluxes, $3.5 \text{ cm}^3 \text{ s}^{-1}$ and $4.1 \text{ cm}^3 \text{ s}^{-1}$. No dependence on the entrainment coefficient was observed, regardless of whether the reduced gravity was adjusted to maintain a constant buoyancy flux or not.

The second source (Q_d) was oriented horizontally and was placed underneath a layer of solid but permeable foam. The second source was used to provide the displacement flow that arrests the first front [24]. Over time, the first front became sharp and easily identifiable so that its unsteady

TABLE I. A list of experiments and their parameters: the particle concentration, Φ , the symbol used for each class of experiment in later figures, the particle diameter, d_p , the particle Stokes number based on a bulk flow timescale and median particle diameter, St , the source volume flux, Q_s , the reduced gravity of the plume source fluid without particles, g'_{sal} , the buoyancy flux associated with particles, B_{part} , the buoyancy flux associated with salinity differences, B_{sal} , the source buoyancy flux ratio defined in Eq. (12), P , the momentum jet length defined in Eq. (18), L_m , and the source parameter, $\Gamma = (5Q^2B)/(4\alpha M^{5/2})$ [26]. The Stokes number is estimated using a characteristic fluid timescale equal to $T = u/b = 0.48$ s where u and b are the calculated based on Eqs. (2)–(4) at a height of 20 cm.

Φ % wt.	Symbol —	d_p μm	St —	Q_s $\text{cm}^3 \text{s}^{-1}$	g'_{sal} cm s^{-2}	B_{part} $\text{cm}^4 \text{s}^{-3}$	B_{sal} $\text{cm}^4 \text{s}^{-3}$	P —	L_m cm	Γ —
0	○	—	—	3.45	13.4	0	46.28	0	3.1	0.34
0	○	—	—	4.08	11.4	0	46.45	0	4.0	0.20
0.25	○	38–53	5.7×10^{-4}	3.33	13.3	−4.87	44.47	−0.11	3.2	0.32
0.25	○	38–53	5.7×10^{-4}	3.41	13.3	−4.94	45.17	−0.11	3.3	0.31
0.50	○	38–53	5.7×10^{-4}	3.28	13.7	−9.56	44.87	−0.21	3.3	0.30
0.75	○	38–53	5.7×10^{-4}	3.51	13.4	−15.30	47.12	−0.32	3.8	0.22
1.00	○	38–53	5.7×10^{-4}	3.45	13.6	−20.03	46.93	−0.43	4.1	0.20
1.25	○	38–53	5.7×10^{-4}	3.45	13.6	−25.00	46.83	−0.53	4.5	0.16
1.50	○	38–53	5.7×10^{-4}	3.64	13.6	−31.56	49.35	−0.64	5.4	0.11
1.75	○	38–53	5.7×10^{-4}	4.17	22.6	−42.42	94.25	−0.45	3.9	0.22
2.00	○	38–53	5.7×10^{-4}	4.17	22.8	−48.33	95.17	−0.51	4.1	0.19
2.25	○	38–53	5.7×10^{-4}	4.17	23.1	−54.33	96.13	−0.57	4.3	0.17
2.25	○	38–53	5.7×10^{-4}	4.17	22.7	−54.33	94.71	−0.57	4.4	0.17
0.50	△	53–75	1.1×10^{-3}	3.45	13.6	−10.03	47.03	−0.21	3.5	0.27
0.75	△	53–75	1.1×10^{-3}	3.39	13.4	−14.81	45.56	−0.33	3.7	0.24
1.00	△	53–75	1.1×10^{-3}	3.39	13.4	−19.69	45.29	−0.43	4.1	0.20
1.25	△	53–75	1.1×10^{-3}	3.39	13.5	−24.58	45.66	−0.54	4.5	0.16
0.50	□	53–75	1.1×10^{-3}	4.08	14.7	−11.92	60.04	−0.20	3.9	0.21
1.00	□	53–75	1.1×10^{-3}	4.08	17.2	−23.80	70.12	−0.34	4.0	0.20
1.25	□	53–75	1.1×10^{-3}	4.00	18.6	−29.08	74.44	−0.39	3.9	0.21
1.50	□	53–75	1.1×10^{-3}	4.08	20.2	−35.59	82.45	−0.43	4.0	0.21
1.75	□	53–75	1.1×10^{-3}	4.17	21.5	−42.38	89.38	−0.47	4.1	0.20
0.50	×	63–90	1.6×10^{-3}	4.08	14.6	−11.92	59.51	−0.20	3.9	0.21
0.50	×	63–90	1.6×10^{-3}	4.08	13.4	−11.88	54.69	−0.22	4.1	0.19
1.00	×	63–90	1.6×10^{-3}	4.08	13.4	−23.70	54.71	−0.43	4.9	0.14
0	◇	—	—	3.64	13.7	0	49.97	0	3.2	0.32
0	◇	—	—	3.57	13.5	0	48.29	0	3.2	0.32
0.50	◇	38–53	5.7×10^{-4}	3.57	10.9	10.39	38.85	0.27	3.2	0.32
1.00	◇	35–53	5.7×10^{-4}	3.64	7.9	21.14	28.66	0.74	3.2	0.31
1.00	◇	35–53	5.7×10^{-4}	3.57	7.7	20.75	27.35	0.76	3.2	0.31
1.60	◇	35–53	5.7×10^{-4}	3.57	4.6	33.15	16.26	2.04	3.2	0.32

position could be tracked during the measurement stage of an experiment. Just below the top of the tank was an overflow (Q_o) that allowed the volume of fluid in the tank to be kept constant while the first front was being established and an experiment was being run.

The tank was initially filled with oceanic salt water ($\rho_a = 1.02186 \pm 0.00011 \text{ g cm}^{-3}$) that had been left for at least 12 h in a storage tank to thermally equilibrate. The plume source fluid was made from a mixture of oceanic salt water and fresh water which had also been thermally equilibrated for at least 12 h. A small quantity of food dye was added to the plume solution for visualisation. The density of both the source fluid (ρ_s) and the ambient fluid (ρ_a) were measured with an Anton Parr densimeter to an accuracy of $5 \times 10^{-5} \text{ g cm}^{-3}$.

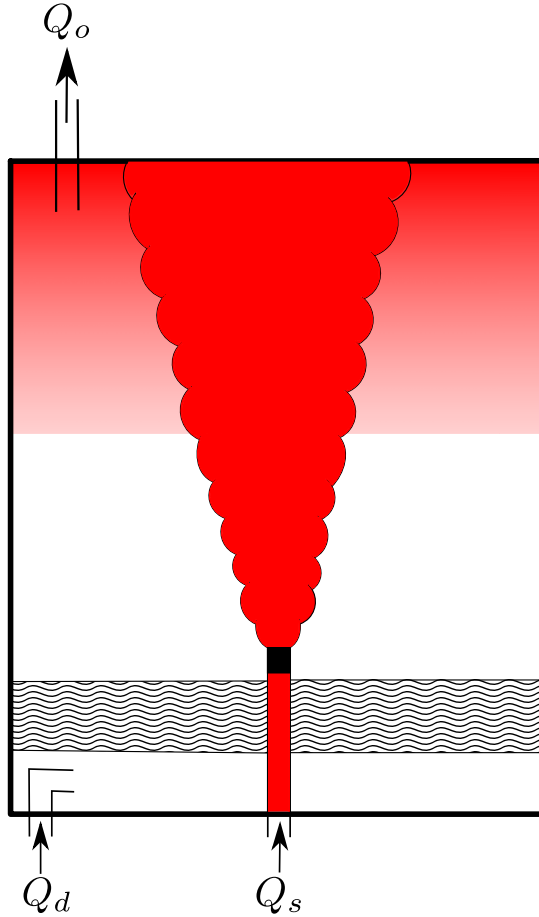


FIG. 1. A schematic of the tank used in the experiments. Q_s provided the source fluid for the plume and was released from above the foam mesh (marked by the black square). Q_d provided a displacement flow that was used to arrest the first front until it was clear and sharp. Q_o provided an overflow to maintain a constant volume of fluid in the tank.

After the fluid density was measured, the plume source fluid was split into two storage tanks. To one of these a known mass of solid glass microspheres was added to achieve the desired particle concentration. The microspheres had a density of 2.5 g cm^{-3} and diameter ranges of 38–53, 53–75, and 63–90 μm . These particle sizes will hereafter be signified within Table 1 and later figures by blue circles, red triangles, and purple crosses, respectively. Representative settling velocities for the smallest and largest particle ranges were approximately 0.16 and 0.46 cm s^{-1} , respectively, which is significantly smaller than typical plume velocities of $4\text{--}6 \text{ cm s}^{-1}$. These settling velocities have been calculated based on the average of the maximum and minimum diameters for each particle size.

It is helpful to consider the buoyancy flux associated with salinity differences, B_{sal} , and the buoyancy flux associated with the particle field, B_{part} , separately. A similar approach has been used to study sedimentation from particle-laden plumes in stratified ambient fluids [8]. We define a positive buoyancy flux to be in the direction that the plume travels such that $B_{\text{sal}} > 0$. The total buoyancy flux of the plume is given by $B = B_{\text{sal}} + B_{\text{part}}$ and we also define a source buoyancy flux ratio, P , that gives the relative magnitude of the two buoyancy flux contributions:

$$P = \frac{B_{\text{part}}}{B_{\text{sal}}}. \quad (12)$$

Unlike previous work, we allow the value of P to be negative or positive to distinguish between the two experimental cases where buoyancy fluxes act in opposing directions or the same direction [8]. For the majority of the experiments where the particle induced buoyancy flux is in the opposite direction to the salinity induced buoyancy flux, P will be negative and greater than -1 . The two buoyancy flux components, B_{sal} and B_{part} , as well as the source buoyancy flux ratio are given for each experiment in Table I.

For most of the experiments, the reduced gravity [$g' = g(\rho_a - \rho_f)/\rho_a$] of the fluid used within the plume was set at approximately 13.5 cm s^{-2} before the addition of particles. In these experiments, the total buoyancy flux of the plume, given by $B_{\text{sal}} + B_{\text{part}}$, depended on the initial particle concentration. To demonstrate that the buoyancy flux of the plume did not affect the value of the entrainment coefficient, several additional experiments using the medium particle size were performed. In these experiments, the total buoyancy flux of the plume was kept constant by varying the density of the plume source fluid based on the particle concentration. Within Table I and later figures, this set of experiments is signified by green square markers. These two sets of experiments allowed a direct comparison between plumes where the buoyancy flux due to salinity was kept constant and plumes where the total buoyancy flux was kept constant, thus highlighting any effect that changes in the total plume buoyancy flux could have on the measured entrainment coefficient.

At the start of an experiment, a sharp first front is formed in the manner described in Baines [24]. Both sources of water at the base of the tank, as well as the overflow at the surface, are turned on and the first front is formed at the height where the displacement volume flux is equal to the plume volume flux. For this initial stage the plume source fluid that did not contain particles was used, so as to avoid increasing the particle loading immediately above the first front. Once the first front was sufficiently sharp and visually obvious, the particle-laden plume source fluid was supplied to the experimental tank for several minutes to ensure that particles would flow from the plume source as soon as the measurement phase of the experiment was started.

The plume source, Q_s , was then turned off and the displacement volume flux, Q_d , was reduced. The displacement volume flux was continued at a low flow rate to move the first front higher in the tank and hence increase the height over which the plume volume flux could be measured. A lower ambient fluid flow rate, Q_d , was used over this period to avoid mixing and ensure that the first front remained sharp.

Once the first front was approximately 40 cm above the source, the displacement volume flux was stopped and the plume source was turned on. A camera placed 2.0 m in front of the tank was used to record the experiment. The experiment was run until the first front was approximately 3 cm above the source or the first front collapsed due to particle loading. During a typical experiment we did not observe particles below the first front. This was likely because the flow induced by the plume reaching the top of the tank kept the fluid above the first front well mixed. As a result, it is expected that the concentration of particles immediately above the first front gradually increased over time. For experiments with high particle concentrations, the first front eventually became convectively unstable and particles rapidly fell down into the ambient fluid, advecting fluid with them (for a description of the mechanisms leading to this collapse see [27]). At this point the experiment was stopped as high particle concentrations throughout the tank made optical measurements difficult and led to particles being reentrained into the plume, thus decreasing the buoyancy flux. The collapse of the first front determined the maximum particle concentration that could be used in our experiments.

The above description relates to the first and larger set of experiments. As previously mentioned, a secondary set of experiments was also conducted where the experimental apparatus was essentially inverted. Inverted experiments are signified by light blue diamonds in Table I and in later figures. The inverted experiments were conducted to determine whether the behavior of the plume is the same when the particle buoyancy flux is in the same or opposite direction to the plume buoyancy flux.

For these experiments Q_s and Q_d were moved to the top of the tank while Q_o was moved to the bottom. The tank was initially filled with fresh water and the plume solution was still made from a mixture of fresh and oceanic salt water to obtain the required density difference. The source used

for the inverted experiments was of the same design but different from that used in the original experiments. Apart from these minor details however, the experiments were identical. For the experiments without particles, the entrainment coefficient for the original and inverted apparatus was the same, within experimental uncertainty.

B. Experimental analysis

For all experiments, the plume volume flux was measured in the same manner as in Cenedese and Linden [23]. To obtain the first front position as a function of time, the experimental video was processed by averaging vertical columns from outside of the plume and applying a light intensity threshold. Horizontal averaging was necessary as the first front developed wavelike oscillations due to residual flows above the first front and, as such, was not always horizontal. This effect was particularly prominent at early stages of an experiment when the first front was close to the top of the tank. This process identified the interface between the red plume fluid and colorless ambient fluid and provided the distance between the first front and the plume source as a function of time, $h(t)$. The plume volume flux, $Q(z)$, was then calculated following Cenedese and Linden [23] as

$$Q(z = h) = -[A - A_p(z)] \frac{dh}{dt} + Q_s, \quad (13)$$

where A is the area of the tank and A_p is the area of the plume. Since $A_p < 0.03A$ in these experiments, we ignore the area of the plume which has a negligible effect on the results. When analyzing the experimental data, $h(t)$ was approximated by fitting a polynomial to the measurements of the first front height, and the volume flux was found by differentiating that polynomial.

From Eqs. (2)–(4) and following Cenedese and Linden [23], the volume flux of a pure plume is given by

$$Q = \left(\frac{9}{10}\right)^{1/3} \frac{6}{5} \pi^{2/3} \alpha^{4/3} B^{1/3} z^{5/3}, \quad (14)$$

where B is the total plume buoyancy flux which is uniform with height. Equation (14) can be rearranged and differentiated with respect to z to give an expression for the entrainment coefficient, α :

$$\alpha = \frac{5}{6} \left(\frac{4}{3\pi^2}\right)^{1/4} \left[\frac{d}{dz} \left(\frac{Q^3}{B}\right)^{1/5}\right]^{5/4}. \quad (15)$$

Equations (13) and (15) provide a method for calculating the entrainment coefficient based on a measurement of the first front position, $h(t)$.

Implicit in our measurements of the entrainment coefficient is that the entrainment coefficient is uniform with height and that the plume follows the self-similar scaling for a pure plume as given in Morton *et al.* [13], i.e., $Q \sim \alpha^{4/3} B^{1/3} z^{5/3}$. This is necessary as we measure only the change in volume flux with height and hence require an *a priori* model of the plume to calculate the entrainment coefficient. To demonstrate that this self-similar scaling is valid, we have plotted two sets of intermediary result in Fig. 2. Figure 2(a) shows direct measurements of the first front height as a function of time during three typical experiments. Also shown is the first front position that would be predicted based on the self-similar scaling:

$$h = \left[\frac{2}{3A} \left(\frac{9}{10}\right)^{1/3} \frac{6}{5} \pi^{2/3} \alpha^{4/3} B^{1/3} t + h_0^{-2/3} \right]^{-3/2} - \frac{Q_s t}{A}, \quad (16)$$

where α is the entrainment coefficient determined in Sec. IV and h_0 is the height of the first front at $t = 0$. Two of the profiles in Fig. 2(a) have been shifted vertically by a small distance to aid in visual clarity. Figure 2(b) shows direct measurements of the scaled volume flux [from Eq. (13)] against height, every 30 s, for the three representative experiments shown in Fig. 2(a). Here the

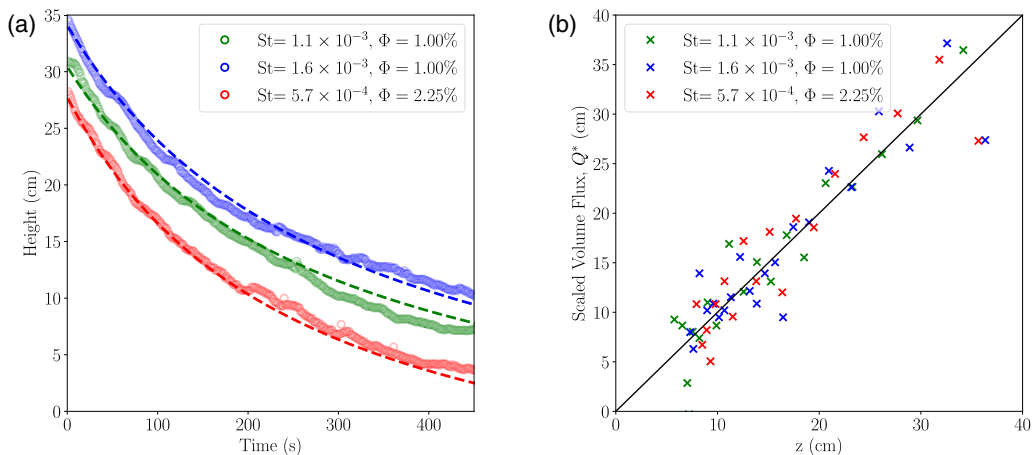


FIG. 2. (a) Measurements of the first front height as a function of time and that predicted based on Eq. (16) for three typical experiments. The profiles for $St = 1.6 \times 10^{-3}$ and $St = 5.7 \times 10^{-4}$ have been shifted vertically by a small amount to aid in clarity. (b) Measurements of the scaled volume flux plotted against height every 30 s for three typical experiments. The scaled volume flux, Q^* is given by Eq. (17). The data follow the 1:1 relationship shown by the black line with an R^2 value of 0.86.

scaled volume flux is given by

$$Q^* = \left[Q \left(\frac{9}{10} \right)^{-1/3} \left(\frac{6}{5} \right)^{-1} \pi^{-2/3} \alpha^{-4/3} B^{-1/3} \right]^{3/5} \quad (17)$$

such that, provided the self-similar scaling is valid, Q^* is equal to z . Once again, the entrainment coefficient determined in Sec. IV is used when calculating Q^* . We note that the scaled volume flux measurements shown in Fig. 2(b) were not used to calculate the entrainment coefficient. Figure 2(b) shows the scaled volume flux directly from the experimentally measured first front heights whereas the entrainment coefficients were calculated based on the polynomial fit of $h(t)$.

The scaled volume flux shown in Fig. 2(b) follows the 1:1 relationship predicted by Eq. (14), albeit with a reasonable degree of scatter ($R^2 = 0.86$). The scatter, particularly at early times (large heights), is associated with high frequency variations of the first front position and reduces over the duration of an experiment as the density difference across the first front increases. Despite the scatter, the data demonstrate that Eq. (15) is suitable to calculate the entrainment coefficient.

C. Uncertainty analysis

A detailed uncertainty analysis has been conducted to assess the experimental error on the entrainment coefficient. This analysis has included uncertainties arising both from the source conditions and from the analysis process. In this section we describe each of the sources of experimental error independently and then assess the combined effect.

The source volume flux was measured to within an accuracy of $\pm 0.09 \text{ cm}^3 \text{ s}^{-1}$ which results in an error on the measured entrainment coefficient [through Eqs. (13) and (15)] of approximately ± 0.0008 . Similarly, the fluid density difference was measured to within $\pm 0.4\%$. We calculate the error on the measured entrainment coefficient that results from changing the source reduced gravity by $\pm 1\%$ and find it to be approximately ± 0.0003 .

It is difficult to assess how accurately the source particle concentration was known. The average particle concentration in the source solution reservoir was known to a high degree of accuracy but the actual particle concentration at the plume source was less certain. Although the particle solution was continually stirred during the experiment, it is likely that the particle concentration at the plume

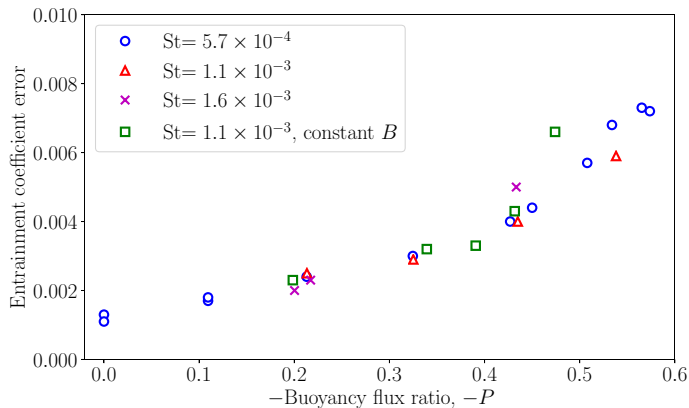


FIG. 3. Combined error on the measured entrainment coefficient as a function of the buoyancy flux ratio, P .

source was somewhat unsteady. In addition, some fraction of the particles may have become trapped inside the tubing between the reservoir and the plume source. Since it was not possible to measure the particle concentration at the source, we use a conservative estimate that the particle concentration was known only to within $\pm 10\%$. The uncertainty in the particle concentration affects the measured entrainment coefficient directly through Eq. (15), by changing the source buoyancy flux, and also changes the buoyancy flux ratio, P . The change in the buoyancy flux results in an experimental error on the entrainment coefficient that increases with the source particle concentration between 0 and 0.0053. The error in the buoyancy flux ratio is approximately $\pm 10\%$.

Finally, we consider the error introduced in fitting polynomial curves to the experimental data. Again, we note that although measurements of the volume flux are shown every 30 s in Fig. 2(b), we use data of the first front height every 1 s when calculating the entrainment coefficient. We estimate the error in fitting both height against time [Eq. (13)] and volume flux against height [Eq. (15)] by adding and subtracting two standard deviations to the fit, continuing the analysis, and recalculating the entrainment coefficient. This introduces error on the calculated entrainment coefficient of approximately ± 0.0002 and ± 0.0003 for the two polynomial fits, respectively.

The exact values of each of these errors on the measured entrainment coefficient vary from experiment to experiment, most notably for the source particle concentration. All sources of error are combined for each experiment in a way that maximizes the total error on the measured entrainment coefficient. Figure 3 shows the combined error on the entrainment coefficient for the experiments with the plume buoyancy flux and particle buoyancy flux acting in opposing directions. The same analysis was performed on experiments where the plume buoyancy flux and the particle buoyancy flux were acting in the same direction and similar results were found. It is clear that the measured error increases as the buoyancy flux ratio becomes more negative (or the particle concentration increases), which is due primarily to the uncertainty in the source particle concentration. The errors shown in Fig. 3 will be used throughout later sections when presenting the experimental results.

IV. EXPERIMENTAL RESULTS

A. Opposing buoyancy fluxes

For the experiments where the buoyancy flux of the plume fluid and of the particles were in opposing directions, three particle sizes were used. The results of these experiments are shown in Fig. 4 as a function of particle concentration. The vertical error bars show the calculated uncertainty shown in Fig. 3 and the horizontal error bars reflect the particle concentration at the source varying by $\pm 10\%$. For low particle concentrations ($\leq 1\%$) the entrainment coefficient increases

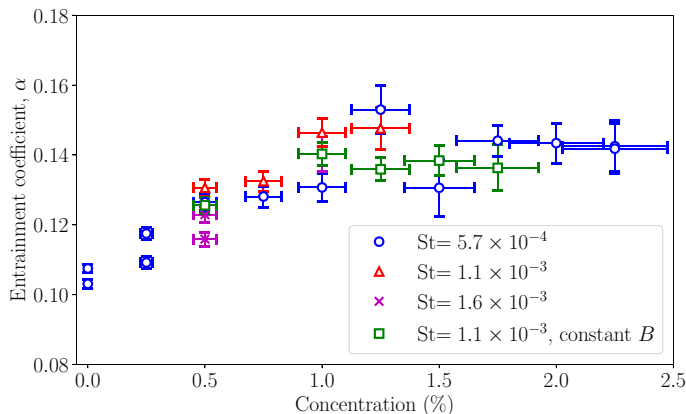


FIG. 4. Measured entrainment coefficient as a function of sediment concentration by mass. The vertical error bars show the calculated uncertainty shown in Fig. 3 and the horizontal error bars reflect the particle concentration at the source varying by $\pm 10\%$.

approximately linearly with increasing concentration. For particle concentrations above 1% the entrainment coefficient appears to be approximately constant.

To ensure that source characteristics were not affecting the measured entrainment coefficients, values were calculated based on the volume flux at heights larger than the momentum jet length L_m . The momentum jet length was calculated as given in Hunt and Kaye [26] as

$$L_m = 2^{-3/2} \alpha^{-1/2} \frac{M_0^{3/4}}{B^{1/2}}, \quad (18)$$

where M_0 is the momentum flux at the source and $\alpha = 0.105$ is used for all experiments. The value of $\alpha = 0.105$ was chosen based on experiments with no particles. L_m varied between approximately 3–5 cm (10–20 source radii) across the experiments and the results were only slightly different if the entrainment coefficient was calculated over the full depth of the experiments. Calculating the entrainment coefficient only over heights larger than $5L_m$, based on Papanicolaou and List [28], had no effect on the measured entrainment coefficient. To increase the amount of available data from which to calculate the entrainment coefficient and reduce the experimental uncertainty, all heights larger than L_m were used. In addition, there was no relationship between L_m and the particle concentration so variations in L_m can not explain the experimental results.

All three particle sizes collapse onto a single curve in Fig. 4 demonstrating that, for the particles tested here, the entrainment coefficient does not depend on the particle size. This is not surprising given that the settling velocity of the largest particles is only four times that of the smallest particles. Similarly, the particle response time τ_p varied from $(1.9 - 7.7) \times 10^{-4}$ s, giving similar values of St for the three particle size used in this study as shown in Table I. The data with constant total buoyancy flux (green squares) lie upon that with a constant buoyancy flux due to salinity differences alone. This result suggests that the total buoyancy flux of the plume does not affect the entrainment coefficient which is consistent with studies of single phase plumes.

We note that the results shown in Fig. 4 are not consistent with an increased velocity of the first front due to the loading of particles above the front, or the sedimentation of particles through the front. The entrainment coefficient is determined by $\frac{dQ}{dz}$ or $\frac{d}{dz} \left(\frac{dh}{dt} \right)$ as given in Eqs. (13) and (15). Larger values of $\frac{d}{dz} \left(\frac{dh}{dt} \right)$ imply higher rates of entrainment into the plume and hence a larger entrainment coefficient. Throughout an experiment the first front moved towards the source and particles accumulated above the front. The effects of particle sedimentation through the first front are expected to be more significant later in the experiment (or at smaller heights) when the particle load

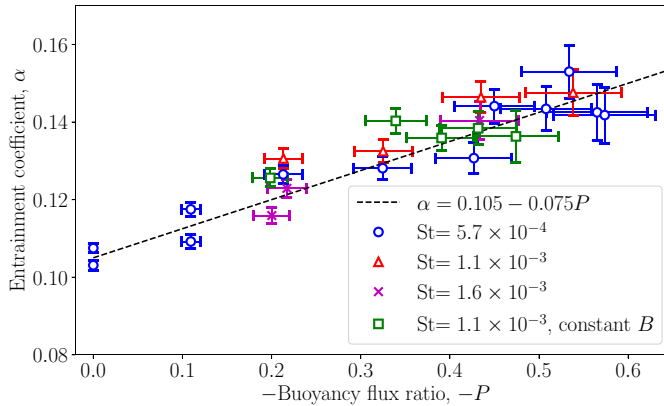


FIG. 5. Measured entrainment coefficient as a function of buoyancy flux ratio. As in Fig. 4, the vertical error bars show the calculated uncertainty shown in Fig. 3 and the horizontal error bars reflect the particle concentration at the source varying by $\pm 10\%$. The empirical model (dashed line) shows a linear fit through the data. This fit will be further discussed in Sec. V.

within the tank is maximum. Thus, if sedimentation of particles through the first front was causing the front to fall more rapidly than it would due to the plume volume flux alone, $dh/dt \propto Q$ would be artificially increased near the base of the tank. Such a change would decrease the measured value of dQ/dz and hence reduce the measured entrainment coefficient. Since the results in Fig. 4 show the opposite behavior, particle sedimentation through the first front cannot explain the increased entrainment coefficient. However, it is possible that the increase in the entrainment coefficient is larger than what we measured due to particle sedimentation but, since particles were not observed to settle through the first front, this effect is expected to be small.

Figure 5 shows the same data as plotted in Fig. 4 but instead plotted against the negative source buoyancy flux ratio, $-P$. While Fig. 4 suggested that the entrainment coefficient reached a constant value for particle concentrations beyond 1% by mass, Fig. 5 shows that the entrainment coefficient continues to increase when considered in terms of $-P$. It is unclear what could cause the change in behavior at a particle concentration of 1% by mass. Therefore, the source buoyancy flux ratio appears to be the independent variable that best determines the entrainment coefficient in our experiments.

An important change in the flow regime will occur at $-P = 1$, when the buoyancy flux of the particle field exactly offsets the buoyancy flux of the salinity field. In this case, the flow would be expected to behave as a jet rather than a plume as the total buoyancy flux will be zero. The linear model shown in Fig. 5 would predict an entrainment coefficient of $\alpha = 0.18$ at $P = -1$, but the model is not expected to be valid in this regime. The entrainment coefficient was measured only at heights greater than the momentum jet length, L_m . When $-P = 1$, the momentum jet length becomes infinite and the predicted entrainment coefficient would never be valid. Whether an increase in entrainment coefficient would be observed for a particle-laden jet when compared to a single-phase jet is an important question but outside the scope of this study.

B. Complementary buoyancy fluxes

A second set of experiments was conducted where the buoyancy flux of the particles was in the same direction as that of the plume fluid. For these experiments only the smallest particle size was used and the total buoyancy flux at the source was kept constant. The smallest particle size was used as the particles were less likely to be trapped in the piping between the fluid reservoir and the source so the experiments could be performed more reliably. The results of these experiments are shown

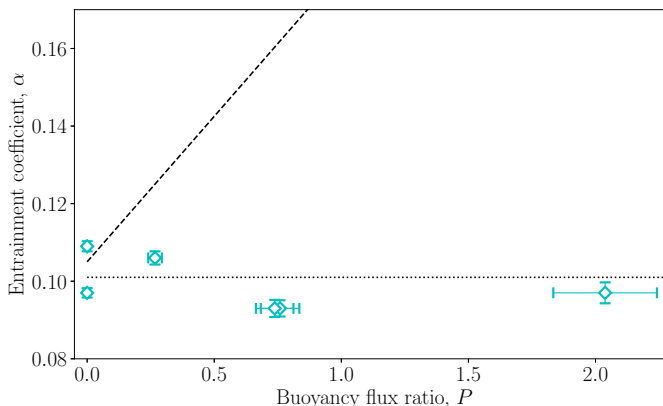


FIG. 6. Measured entrainment coefficient as a function of buoyancy flux ratio for experiments where the plume fluid buoyancy flux and the particle buoyancy flux were in the same direction. The error bars have been calculated in the same manner as in Figs. 4 and 5. The dotted line shows the mean of the data, $\alpha = 0.101$ and the dashed line shows the same fit as was shown in Fig. 5. The vertical scale is the same as that used in Fig. 5.

in Fig. 6, plotted against P as that is expected to be more dynamically important than the particle concentration.

Unlike the experiments described in Sec. IV A, the measured entrainment coefficient was independent of the source buoyancy flux ratio when the particle buoyancy flux was in the same direction as the plume fluid buoyancy flux. The black dashed line in Fig. 6 shows the mean entrainment coefficient of these experiments of 0.101 and the error bars are the same as in Sec. IV A. This value of the entrainment coefficient is slightly lower, but similar to the value $\alpha = 0.105$ found for the experiments without particles in the opposing buoyancy fluxes configuration described in Sec. IV A.

V. DISCUSSION

The dependence of the entrainment coefficient on the particle concentration suggests that the particles are affecting the turbulent characteristics of the plume. Balachandar and Eaton [1] note five different mechanisms by which particles can modulate turbulence. First, inertial clustering, as described in the introduction, can lead to convective instabilities in regions of high particle concentration. Second, turbulence can be enhanced due to vortex shedding from particle wakes. Third, the increased inertia of the flow due to the addition of dense particles can reduce the turbulent intensity. Fourth, the effective viscosity of the multiphase flow can be higher than that of the fluid which will reduce the turbulence. Finally, particle drag can increase the turbulent dissipation rate, decreasing the level of turbulent kinetic energy. The final three of these mechanisms will reduce the turbulent kinetic energy in the plume so are very unlikely to lead to increased entrainment.

Of the two mechanisms for turbulence enhancement, vortex shedding in particle wakes can be discounted as a viable mechanism to increase entrainment for the following reason. The eddy viscosity and eddy diffusivity both scale as $u_0(z)b(z)$ in a plume [13], where $b(z)$ is the Gaussian width and $u_0(z)$ the Gaussian maximum velocity at height z . This can be seen from dimensional analysis since these are the only local quantities from the velocity field that can be combined to give dimensions of L^2T^{-1} . In addition, for an axisymmetric plume one can show consistency with an eddy diffusivity that is the product of the velocity profile and the plume radius. Assuming a Boussinesq flow, self-similarity, and Gaussian profiles, the following axisymmetric fields for density, vertical, and radial velocity can be defined which exactly satisfy incompressibility:

$$\rho = g'(z)f(s)^2, \quad (19)$$

$$u_z = u_0(z)f(s), \quad (20)$$

$$u_r = \frac{r}{z}u_0(z)f(s) - \frac{1}{4r}[1 - f(s)]\frac{\partial}{\partial z}[u_0(z)b(z)^2], \quad (21)$$

where $s = r/b$, $b = (6/5)\alpha z$, and $f(s) = \exp(-2s^2)$. Equation (21) is found directly from Eq. (20) to satisfy incompressibility. The choice of $f(s)^2$ for ρ means that all terms in the vertical momentum have the same exponential factor. The zeroth horizontal moment of the buoyancy equation requires the conservation of buoyancy as usual with $g'(z) \propto z^{-5/3}$ and $u_0(z) \propto z^{-1/3}$. The first horizontal moments are satisfied by symmetry, and the second horizontal moments are satisfied if the eddy diffusivity is taken as

$$\frac{\kappa}{bu_z} = \frac{3}{16}\alpha + O(\alpha^3). \quad (22)$$

The same can also be done with the momentum equations, if the α expansion is performed before the integration to $r = \infty$, this gives an eddy viscosity

$$\frac{\nu}{bu_z} = \frac{3}{4}\alpha + O(\alpha^3). \quad (23)$$

For a particle sedimenting at its settling velocity v_s the only length scale is the particle diameter d . Thus the induced eddy viscosity or diffusivity from the turbulent wake must scale with dv_s . Since the particle diameter is small compared to the plume diameter and the settling velocity is small compared to the plume velocity, this means that the contribution to mixing and entrainment from the vortex shedding in particle wakes will be small. However, if particle clustering occurs the cluster can behave like a larger particle thus giving rise to increased eddy viscosity or diffusivity, which scales with the product of cluster size and cluster velocity.

The observed increased entrainment coefficient is therefore most likely explained by inertial clustering leading to convective instabilities. Inertial clustering has been observed to have an increased importance with increased particle concentrations [29] which is consistent with our experiments. In addition, convective instabilities near the edges of the plume could directly enhance the exchange of ambient fluid into the plume and lead to a higher value of the entrainment coefficient.

Convective instabilities arising at the edge of the plume from inertial clustering can also explain the asymmetry between the two sets of experiments described in Sec. IV. The difference between the two seemingly comparable situations is demonstrated schematically in Fig. 7. On the left of Fig. 7, the case where the particle buoyancy flux and plume fluid buoyancy flux are in opposing directions is shown while on the right, the case where the particle buoyancy flux and plume fluid buoyancy flux are in the same direction is shown. For each case, we consider a small region of fluid that has reached a sufficiently high particle concentration that the local particle buoyancy exceeds the fluid buoyancy and determines the direction of the bulk density of the local region. The dashed lines show the path that such a dense region might be expected to follow.

In the case where the particle buoyancy flux is opposing the plume fluid buoyancy flux (and hence the plume velocity), dense particle clusters will fall towards the plume source where the plume is narrower. As a result, particle clusters from the edge of the plume will fall out of the plume into ambient fluid. These particle clusters may then be reentrained into the plume or continue falling. Regardless, interaction between the particle cluster and the turbulent-nonturbulent interface could lead to enhanced entrainment of ambient fluid into the plume. In contrast, when the particle buoyancy flux is in the same direction as the plume fluid buoyancy flux, particle clusters will fall away from the plume source where the plume is wider. As a result, particle clusters at the edge of the plume will remain within the plume, will not interact with ambient fluid, and will not be able to enhance the entrainment of ambient fluid into the plume.

As the particle concentration increases, it is expected that a smaller particle concentration anomaly would be required for a local density reversal to occur. Thus, convective overturns would be able to occur more frequently and the effect on the entrainment coefficient should be larger. This

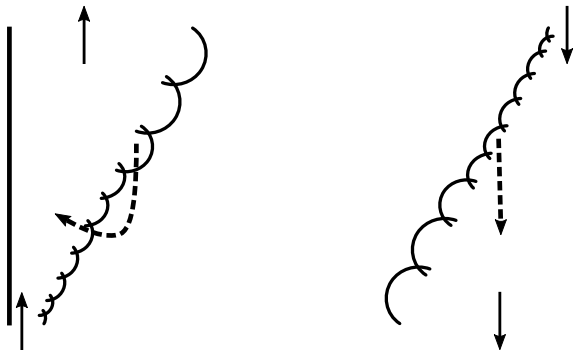


FIG. 7. Schematic showing the difference between the two sets of experiments described in Sec. IV. Solid arrows represent the fluid paths and dashed arrows represent the path of a dense particle cluster. On the left, the case where the particle and plume buoyancy fluxes are in opposing directions is shown while on the right, the case where the particle and plume buoyancy fluxes are in the same directions is shown. On the left, the convecting particles mix with ambient fluid before being reentrained back into the plume whereas on the right the particles fall through the plume and do not encounter ambient fluid.

is consistent with the data presented in Fig. 5. We note that, during experiments, we did not observe large-scale collapse at the edge of the plume. From this, we infer that the induced convection did not take the form of a collapsing column, as described in Carazzo and Jellinek [27], but instead comprises clusters of particle-fluid mixture sedimenting sporadically from the plume over relatively short time periods.

To further investigate the changes in the entrainment coefficient with particle concentration it will be beneficial to consider the turbulent kinetic energy production directly. It has previously been observed that the turbulent energy production by shear is similar in jets and plumes with the only difference caused by the addition of buoyancy in a plume [30]. This observation results in expressions for the entrainment coefficient of a forced plume such as that in Eq. (5) which explicitly considers the role of shear and buoyancy in producing the turbulent kinetic energy that entrains ambient fluid. To extend Eq. (5) to account for the role of buoyancy reversals driven by inertial clustering, a term that considers the particle phase is needed. Hence, we propose the following expression for the entrainment coefficient of a plume with suspended particles of opposing buoyancy:

$$\alpha = \alpha_j + (\alpha_p - \alpha_j)\Gamma - CP. \quad (24)$$

The data presented in Fig. 5 suggests a constant value of $C = 0.075$ for these experiments, as shown by the dashed line.

Equation (24) is empirical, based on our experimental results and the form of Eq. (5). Within the experimental parameter space, treating C as a constant provides an accurate prediction of measured entrainment coefficients. However, the variation of particle properties within the experiments is relatively small and some dependence of C on the particle Stokes number, the density ratio β , or other parameters is possible but outside the scope of the present study. As previously mentioned, the relationship is also unlikely to hold as P approaches -1 and the flow becomes a particle-laden jet. Clearly further work in the form of a broader parametric study is required to constrain both the value of C and the form of Eq. (24) which is currently somewhat speculative.

VI. CONCLUSION

We have presented experiments that measure the volume flux, as a function of height, of an axisymmetric turbulent plume with suspended dense particles. These measurements were used to

calculate an entrainment coefficient for a variety of particle concentrations, both in the configuration where the particle buoyancy flux is in the opposite direction, and in the same direction as the plume fluid buoyancy flux.

When the particle buoyancy flux opposes that of the plume fluid, the entrainment coefficient is seen to be significantly altered by the presence of suspended particles, increasing linearly with the source buoyancy flux ratio. Its value can be up to 40% larger than that without particles for the largest source buoyancy flux ratio investigated in this study, i.e., $P = 0.55$. Inertial clustering has been suggested as a process that could lead to local buoyancy reversals and to increase the entrainment coefficient but the experiments were not able to fully test if this mechanism is the correct explanation.

When the particle buoyancy flux and the plume fluid buoyancy flux are in the same direction, the entrainment coefficient appears to be unaffected by the presence of suspended particles. The asymmetry based on the direction of particle buoyancy flux is consistent with inertial clustering as regions of high sediment concentration would not lead to buoyancy flux reversals if the particle and plume fluid buoyancy flux were aligned.

Although the experimental results can be qualitatively explained through inertial clustering and local buoyancy reversals, the quantitative details of this process still need to be investigated. This would require observations of either local particle concentration or bulk density over a variety of spatial scales. It would also be of interest to extend the results to a wider range of particle properties. It is expected that the constant, C , in Eq. (24) is itself a function of at least the particle Stokes number and this should be tested. Finally, it would be interesting if similar results would be produced if the plume was seeded with bubbles instead of dense particles. Particle-laden flows often have similarities with bubbly flows so similar results might be expected in bubbly plumes.

ACKNOWLEDGMENTS

We gratefully acknowledge technical assistance from A. Jensen. C.M. thanks the Weston Howard Jr. Scholarship for funding. Support to C.C. was given by NSF projects OCE-1434041 and OCE-1658079.

-
- [1] S. Balachandar and J. K. Eaton, Turbulent dispersed multiphase flow, *Annu. Rev. Fluid Mech.* **42**, 111 (2010).
 - [2] K. D. Mankoff, F. Straneo, C. Cenedese, S. B. Das, C. G. Richards, and H. Singh, Structure and dynamics of a subglacial discharge plume in a Greenlandic fjord, *J. Geophys. Res. Oceans* **121**, 8670 (2016).
 - [3] A. D. Bordoloi, C. C. K. Lai, L. Clark, G. V. Carrillo, and E. Variano, Turbulence statistics in a negatively buoyant multiphase plume, *J. Fluid Mech.* **896**, A19 (2020).
 - [4] A. C. H. Lai, S. N. Chan, A. W.-K. Law, and E. E. Adams, Spreading hypothesis of a particle plume, *J. Hydraul. Eng.* **142**, 04016065 (2016).
 - [5] S. Carey, H. Sigurdsson, and R. S. J. Sparks, Experimental studies of particle-laden plumes, *J. Geophys. Res.* **93**, 15314 (1988).
 - [6] G. Veitch and A. Woods, Particle recycling and oscillations of volcanic eruption columns, *J. Geophys. Res.* **105**, 2829 (2000).
 - [7] S. Cardoso, Convection driven by particle settling surrounding a turbulent plume, *Chem. Eng. Sci.* **56**, 3365 (2001).
 - [8] D. D. Apsley and G. F. Lane-Serff, Collapse of particle-laden buoyant plumes, *J. Fluid Mech.* **865**, 904 (2019).
 - [9] C. D. McConnochie, C. Cenedese, and J. N. McElwaine, Surface expression of a wall fountain: Application to subglacial discharge plumes, *J. Phys. Oceanogr.* **50**, 1245 (2020).

- [10] J. P. L. Salazar, J. D. Jong, L. Cao, S. H. Woodward, H. Meng, and L. R. Collins, Experiment and numerical investigation of inertial particle clustering in isotropic turbulence, *J. Fluid Mech.* **600**, 245 (2008).
- [11] J. Tom and A. D. Bragg, Multiscale preferential sweeping of particles settling in turbulence, *J. Fluid Mech.* **871**, 244 (2019).
- [12] H. Yoshimoto and S. Goto, Self-similar clustering of inertial particles in homogeneous turbulence, *J. Fluid Mech.* **577**, 275 (2007).
- [13] B. R. Morton, G. I. Taylor, and J. S. Turner, Turbulent gravitational convection from maintained and instantaneous sources, *Proc. R. Soc. A* **234**, 1 (1956).
- [14] G. Carazzo, E. Kaminski, and S. Tait, The route to self-similarity in turbulent jets and plumes, *J. Fluid Mech.* **547**, 137 (2006).
- [15] C. H. B. Priestley and F. K. Ball, Continuous convection from an isolated source of heat, *Q. J. R. Meteorol. Soc.* **81**, 144 (1955).
- [16] D. G. Fox, Forced plume in a stratified fluid, *J. Geophys. Res.* **75**, 6818 (1970).
- [17] M. van Reeuwijk and J. Craske, Energy-consistent entrainment relations for jets and plumes, *J. Fluid Mech.* **782**, 333 (2015).
- [18] M. M. Scase and R. E. Hewitt, Unsteady turbulent plume models, *J. Fluid Mech.* **697**, 455 (2012).
- [19] E. Kaminski, S. Tait, and G. Carazzo, Turbulent entrainment in jets with arbitrary buoyancy, *J. Fluid Mech.* **526**, 361 (2005).
- [20] T. H. Ellison and J. S. Turner, Turbulent entrainment in stratified flows, *J. Fluid Mech.* **6**, 423 (1959).
- [21] R. Sangras, Z. Dai, and G. M. Faeth, Mixture fraction statistics of plane self-preserving buoyant turbulent adiabatic wall plumes, *J. Heat Transfer* **121**, 837 (1999).
- [22] D. A. Parker, H. C. Burridge, J. L. Partridge, and P. F. Linden, A comparison of entrainment in turbulent line plumes adjacent to and distant from a vertical wall, *J. Fluid Mech.* **882**, A4 (2020).
- [23] C. Cenedese and P. F. Linden, Entrainment in two coalescing axisymmetric turbulent plumes, *J. Fluid Mech.* **752**, R2 (2014).
- [24] W. D. Baines, A technique for the direct measurement of volume flux of a plume, *J. Fluid Mech.* **132**, 247 (1983).
- [25] W. D. Baines and J. S. Turner, Turbulent buoyant convection from a source in a confined region, *J. Fluid Mech.* **37**, 51 (1969).
- [26] N. Hunt and G. Kaye, Virtual origin correction for lazy turbulent plumes, *J. Fluid Mech.* **435**, 377 (2001).
- [27] G. Carazzo and A. M. Jellinek, A new view of the dynamics, stability and longevity of volcanic clouds, *Earth Planetary Sci. Lett.* **325–326**, 39 (2012).
- [28] P. N. Papanicolaou and E. J. List, Investigations of round vertical turbulent buoyant jets, *J. Fluid Mech.* **195**, 341 (1988).
- [29] R. Monchaux and A. Dejoan, Settling velocity and preferential concentration of heavy particles under two-way coupling effects in homogeneous turbulence, *Phys. Rev. Fluids* **2**, 104302 (2017).
- [30] M. van Reeuwijk, P. Salizzoni, G. R. Hunt, and J. Craske, Turbulent transport and entrainment in jets and plumes: A DNS study, *Phys. Rev. Fluids* **1**, 074301 (2016).