



Droplet splashing on rough surfaces

Thijs de Goede , Karla de Bruin, Noushine Shahidzadeh, and Daniel Bonn ^{*}
*van der Waals-Zeeman Institute, Institute of Physics, University of Amsterdam, Science Park 904,
1098 XH Amsterdam, The Netherlands*



(Received 5 November 2020; accepted 2 April 2021; published 28 April 2021)

When a droplet hits a surface fast enough, droplet splashing can occur: Smaller secondary droplets detach from the main droplet during impact. While droplet splashing on smooth surfaces is by now well understood, the surface roughness also affects at which impact velocity a droplet splashes. In this paper, the influence of the surface roughness on droplet splashing is investigated. By changing the root-mean-square roughness of the impacted surface, we show that the droplet splashing velocity is only affected when the droplet roughness is large enough to disrupt the spreading droplet lamella and change the droplet splashing mechanism from corona to prompt splashing. Finally, using Weber and Ohnesorge number scaling models, we also show that the measured splashing velocity for both water and ethanol on surfaces with different roughnesses and water-ethanol mixtures collapses onto a single curve, showing that the droplet splashing velocity on rough surfaces scales with the Ohnesorge number defined with the surface roughness length scale.

DOI: [10.1103/PhysRevFluids.6.043604](https://doi.org/10.1103/PhysRevFluids.6.043604)

I. INTRODUCTION

Droplet impact upon solid surfaces is a phenomenon of importance to a wide range of applications. If the velocity with which a droplet impinges on a surface is above a critical value called the splashing velocity, the droplet breaks up after impact. Numerous studies on droplet splashing have shown that increasing the surface roughness significantly reduces the splashing velocity [1–8]. However, a thorough investigation of the relation between surface roughness and splashing is complicated by the many parameters of the problem, and by the characterization of the surface roughness. Different definitions of the roughness are in fact possible, where some authors use either the arithmetic (R_a) or root-mean-square (R_{rms}) roughness of the surface [2,5], while others have argued that splashing depends on a characteristic slope of the surface profile [6], or account for the multiscale roughness of the surface [8]. In this paper, we will investigate surfaces with a roughness characterized by only a single length scale, which we will characterize with the root-mean-square roughness of the surface.

In addition, recent studies have shown that wettability also influences droplet splashing [8,9]. In contrast to earlier reports [10,11], these studies show that for low wettability surfaces (contact angles $\theta > 110^\circ$), the splashing velocity is lower than for wettable surfaces ($\theta < 90^\circ$). This effect of wettability is important for droplet splashing on rough surfaces as the surface wettability is linked to the surface roughness, especially for low wettability and nonwetting surfaces [12,13].

In this paper the influence of the surface roughness on droplet splashing is investigated for Newtonian fluids. By experimentally measuring the splashing velocity for surfaces with a wide range of root-mean-square roughness, we observe a transition in the splashing mechanism when the surface roughness crosses a certain threshold. This threshold is found to also depend on the wetting

^{*}D.Bonn@uva.nl

TABLE I. Water, ethanol, and ethanol-water mixtures fluid parameters, sorted by ethanol weight percentage (wt %). Sources: Refs. [16,17].

wt % ethanol	Density (kg/m ³)	Surface tension (mN/m)	Viscosity (mPa s)
0	997.0	71.99	0.89
5	989.0	56.41	1.228
10	981.9	48.14	1.501
15	975.3	42.72	1.822
20	968.7	37.97	2.142
40	935.3	30.16	2.846
60	891.1	26.23	2.547
80	843.6	23.82	1.881
100	789.3	21.82	1.203

properties of the liquid on the solid. This was varied both by using water-ethanol mixtures to tune the surface tension of the fluid, and different solids to tune the surface tension of the solid. We find that below a certain surface roughness, the splashing velocity is independent of surface roughness and can be described by the splashing model of Riboux and Gordillo for smooth surfaces [14]. Above a critical roughness, the splashing velocity decreases with increasing roughness. We show that a critical Weber scaling model proposed by García-Geijo *et al.* [15] adequately describes the relation between the splashing velocity and surface roughness. The Weber number in this scaling represents the balance of inertial to capillary forces. This scaling model therefore does not take the influence of viscosity into account, which we find changes the splashing threshold somewhat. We therefore investigate a heuristic scaling model based on the Ohnesorge number of the fluid at the length scale of the surface roughness. We find that a $Oh^{2/3}$ scaling model works very well in collapsing the data, indicating that the inertial, viscous, and capillary forces are all important for (prompt) splashing. However we cannot provide a theoretical derivation of this scaling, leaving the question of the viscous contribution to the splashing threshold open.

II. MATERIAL AND METHODS

Droplet splashing was measured by generating droplets from a syringe equipped with a 0.4-mm-diameter needle, where the initial droplet diameter D_0 varied between 1.8 and 2.2 mm depending on the surface tension of the liquid. The impact of these droplets on a surface was measured using a high-speed camera (Phantom Miro M310) at frame rates between 8100 and 32000 frames per second at an optical resolution of around 19 μm per pixel. The height of the needle was increased, thus increasing the impact velocity of the droplet, until at least one satellite droplet was formed during impact, which was defined as the onset of splashing. Measurements were repeated six times and splashing velocities averaged over these six measurements. As experimental error, we use the difference between the measured splashing velocity, and the measured impact velocity at the previous investigated drop height, for which splashing did not occur. All experiments were done at atmospheric conditions, with air density, viscosity, and mean free path of the air molecules as reported by Riboux and Gordillo [14].

As liquids, nine different water-ethanol mixtures were used. The density, liquid surface tension, and viscosity of these mixtures (given in wt % of ethanol) are shown in Table I. For pure water and pure ethanol, the splashing velocity was measured on several surfaces to investigate the influence of surface roughness on droplet splashing.

As surfaces, sandpaper with different grits and (sandblasted) glass slides (Corning Plain Microslides) were used. Their surface roughness was characterized by the root-mean-square roughness R_{rms} , as measured using a Keyence VK-X-1000 laser scanning confocal microscope (Fig. 1). The

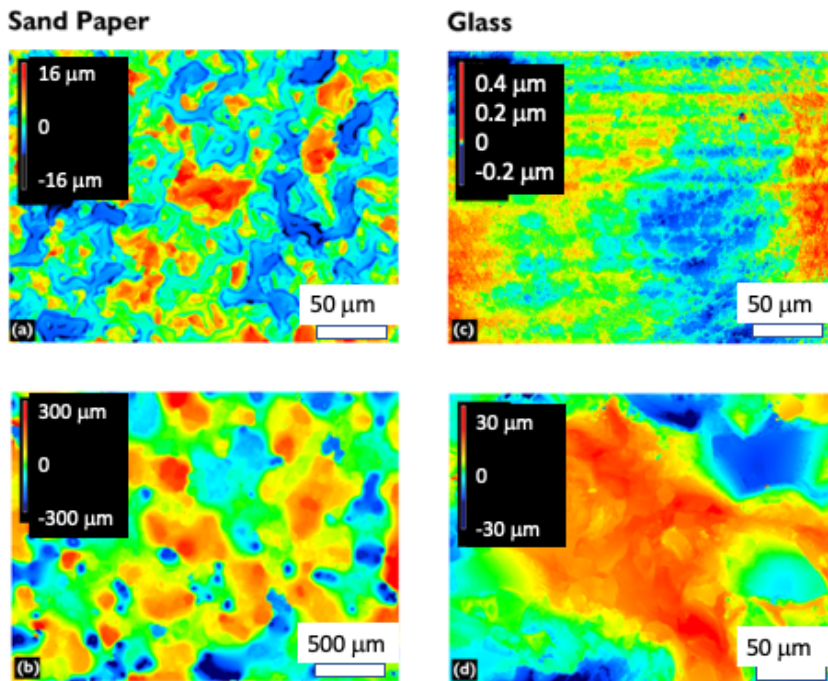


FIG. 1. Surface roughness profiles of the sandpaper surfaces [(a) grit 2000, $R_{\text{rms}} = 4.6 \pm 0.3 \mu\text{m}$; (b) grit 80, $R_{\text{rms}} = 78 \pm 7 \mu\text{m}$] and glass surfaces [(c) smooth, $R_{\text{rms}} = 0.0075 \pm 0.0006 \mu\text{m}$; (d) sandblasted, $R_{\text{rms}} = 7 \pm 1 \mu\text{m}$] as measured with a Keyence VK-X1000 laser scanning confocal microscope. The surface roughness profiles shown in (c) and (d) are for untreated glass slides. The color coding indicates the height or depth of the peaks and valleys with respect to a reference plane of the roughness profile, with the legend shown in the top left of each image.

root-mean-square roughness of the sandpaper lies between 4.6 ± 0.3 and $78 \pm 7 \mu\text{m}$ [Figs. 1(a) and 1(b)]. The glass slides were either completely smooth [Fig. 1(c)] or sandblasted with different sand particle sizes [Fig. 1(d)], giving a measured range of root-mean-square roughness between 0.0075 ± 0.0006 and $7 \pm 1 \mu\text{m}$.

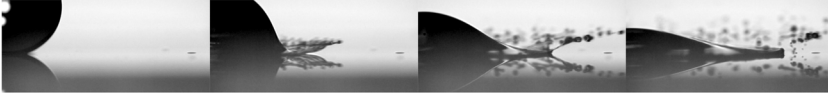
To investigate the influence of surface wettability, glass slides of different roughnesses were silanized to decrease their surface wettability [18]. For all surfaces in this study, the macroscopic contact angle of water was measured for the sandpaper and untreated and silanized glass slides using the sessile drop method [19,20].

III. RESULTS AND DISCUSSION

A. Splashing mechanism

Figure 2 shows splashing of an ethanol droplet impacting a smooth silanized glass slide [Fig. 2(a)] and the sandpaper with the largest grit size [Fig. 2(b)] [21]. Comparing the two image sequences shows the difference in splashing mechanism for smooth and rough surfaces. For smooth surfaces [Fig. 2(a)], a corona splash occurs, where the satellite droplets detach at the edge of the lifted liquid lamella. Corona splashing on smooth surfaces can be described by the splashing model of Riboux and Gordillo [14], who predict the splashing velocity of droplet splashing on smooth surfaces by also considering the properties of the surrounding air. For rough surfaces, a different splashing mechanism is observed. Instead of the formation of a lamella that radially spreads outwards, liquid fingers seem to form that subsequently break up into smaller droplets [Fig. 2(b)],

(a) Smooth Silanised Glass:



(b) Sand Paper Grit 80:

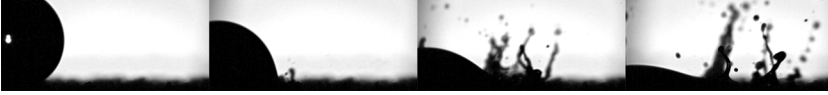


FIG. 2. High-speed images of an ethanol droplet impacting (a) a smooth silanized glass slide ($R_{\text{rms}} = 0.03 \pm 0.03 \mu\text{m}$) and (b) grit 80 sandpaper ($R_{\text{rms}} = 78 \pm 7 \mu\text{m}$) (b) at the same impact velocity ($v > v_{\text{sp}}$). For the smooth surface, satellite droplets are formed from the rim of the lifted sheet of liquid (corona splash), whereas for rough surfaces the satellite droplets are formed from fingerlike structures (prompt splash).

which is known as prompt splashing. The definition of the “prompt splash” is that when a droplet impacts a (rough) surface, there is generation of small satellite droplets at the three-phase contact line. This usually happens at early times in the spreading process of the drop, when the liquid has a high outward velocity. Therefore, these images suggest that a transition takes place in the splashing mechanism when the surface roughness is increased.

Figure 3 shows the splashing velocity of ethanol as a function of the surface roughness. For ethanol, the splashing velocity seems to be constant up until a certain root-mean-square roughness ($\sim 3\text{--}4 \mu\text{m}$), after which the splashing velocity decreases with increasing roughness. Comparing the data with the splashing velocity for stainless steel (downward purple triangle) and parafilm

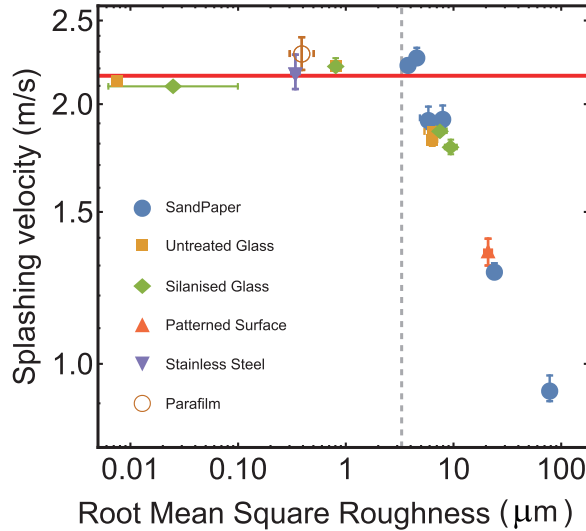


FIG. 3. Measured splashing velocity as function of the surface roughness plotted on a log-log scale for ethanol impacting sandpaper (blue circles), and untreated (yellow squares) and silanized (green diamonds) glass slides. The red line gives the theoretical prediction for corona splashing [14]. The splashing velocity measurements for ethanol impacting stainless steel (purple downward triangle) and parafilm (open brown circle) from the study of de Goede *et al.* [10] are added for comparison. The vertical gray dashed line shows the transition roughness calculated with Eq. (2).

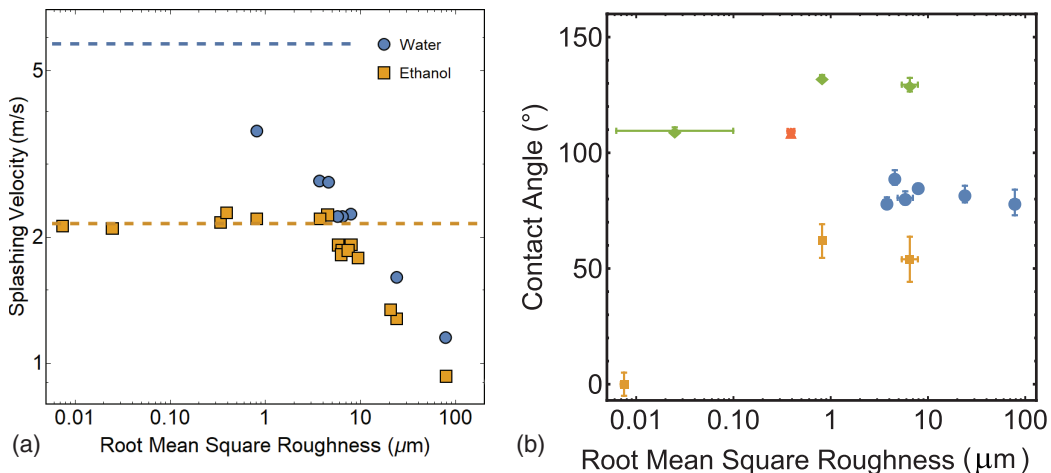


FIG. 4. (a) Measured splashing velocity of water and ethanol for different surface roughnesses on sandpaper, and untreated and silanized glass slides plotted on a log-log scale. The dashed lines give the theoretical prediction for corona splashing [14]. No splashing was observed for droplet impact on the smooth untreated glass surface. (b) Measured contact angles of water as a function of the root-mean-square roughness of the sandpaper (blue circles), and untreated (yellow squares) and silanized glass slides (green diamonds). The contact angle of parafilm from Ref. [10] (red square) is added to this graph as well.

(open brown circle) from de Goede *et al.* [10] shows a good agreement. Furthermore, no significant difference in the roughness dependence of the splashing velocity is observed between the sandpaper (blue circles), and untreated (yellow squares) and silanized (green diamonds) glass slides. As ethanol has a low liquid surface tension and therefore fully wets all surfaces ($\theta = 0^\circ$), this does not rule out a surface wettability dependence.

Comparing the measured splashing velocity with the prediction by Riboux and Gordillo for corona splashing [14] (red line in Fig. 3) shows that for surface roughnesses below $4 \mu\text{m}$, the splashing velocity is predicted very well by this model. The change in the dependence of the splashing velocity on the surface roughness happens simultaneously with the change in the splashing mechanism from corona to prompt splashing (Fig. 2). Below the “critical” root-mean-square roughness ($\sim 4 \mu\text{m}$), corona splashing is observed. Therefore, it seems that the surface roughness is too small to significantly affect the spreading lamella of the droplet, and corona splashing occurs, explaining the good agreement between the measurements and the theoretical splashing model.

When the roughness exceeds $4 \mu\text{m}$, it starts to affect the liquid flow on the surface and breaks up the lamella into the fingerlike structures observed in Fig. 2(b), which also influences the splashing velocity.

B. Surface wettability

In order to investigate the influence of wettability, we switch to a higher surface tension liquid, i.e., water. Figure 4 shows the splashing velocity of water droplets compared to the ethanol drops as a function of surface roughness for various types of surfaces. All measured splashing velocities for water are significantly lower compared to the prediction of the splashing model of Riboux and Gordillo. In fact, this prediction is higher than the highest impact velocity experimentally accessible to us ($\sim 4 \text{ m/s}$). As a result of this upper bound, no droplet splashing is observed for pure water on the smooth untreated glass slide within the velocity range investigated in this study. The water drops we measured did not show a corona splash; the largest height from which water drops were dropped was 1.3 m, for larger heights the air currents in the laboratory interfere with the measurements. Experiments with higher speeds are of course possible, but require extra precautions. We underline

once more that the splashing on smooth surfaces is well described by the Riboux-Gordillo (RG) description, and we define the critical roughness of the surface as the smallest roughness for which a deviation from the RG predictions is observed. From the data, this appears to be quite unambiguous.

We find that the splashing velocity of water on the silanized glass slides is significantly lower compared to the water splashing velocity on the untreated glass slides. The measurements show that this difference in splashing velocity between the two types of glass slides decreases with increasing roughness, where it becomes comparable to the measured splashing velocity for water on sandpaper. Comparing the measured contact angle of these three surfaces [Fig. 4(b)] shows that the contact angle range varies from fully wetting (the smooth untreated glass slide) to around 135° for the rough silanized glass slides. The contact angle measurements of both the untreated and silanized glass slides show a relation between surface roughness and surface wettability: By increasing the surface roughness of the glass slides the contact angle of the surface also increases. It is possible that is due to a transition from the liquid being in contact with the whole surface (Wenzel state) to a state where the “mountains” of the surface roughness act as a Fakir’s bed on which the droplet rests (Cassie-Baxter state). However, whether the Wenzel to Cassie-Baxter transition indeed takes places cannot be determined with the measurements shown here and is beyond the scope of this study. For the sandpaper, the contact angle decreases a little with increasing surface roughness, in agreement with the hypothesis that these measurements are in the Wenzel state.

These results are in agreement with the recent study of Quetzeri *et al.* [9], who showed that the surface wettability starts to have an influence when the surface becomes hydrophobic ($\theta > 90^\circ$). This effect of surface wettability was not observed in the study of de Goede *et al.* [10], as the highest measured contact angle there was on the order of 90° . For the liquid-surface combination (5 wt % ethanol mixture impacting parafilm) used in that study, a lower splashing velocity is observed (Fig. 3 of Ref. [10]), but the difference is within the error margin originating from the used setup. We conjecture that low surface wettability influences droplet splashing by changing the liquid droplet’s shape at the contact line, which most likely changes the interaction between the surrounding air and the liquid when splashing occurs. However, with the measurements presented here, a definite conclusion cannot be given on how exactly surface wettability influences droplet splashing in the low wettability regime. For the remainder of this study, we consider liquid-surface combinations that correspond to good wettability to minimize the influence of low surface wettability on droplet splashing.

C. Splashing scaling models

Our observation that the splashing velocity depends on surface roughness above a critical roughness corresponding to the transition from corona to prompt splashing suggests that the fingerlike breakup of the droplet is most likely caused by the droplet pushing itself into the “valleys” of the surface roughness, and then ejecting a liquid finger when it encounters a “mountain.” García-Geijo and collaborators [15] used this idea to explain prompt splashing in the low Ohnesorge number limit: When the surface roughness becomes comparable to the thickness of the spreading lamella H_t on top of the surface, the droplet can push itself into the surface roughness if the impact velocity is high enough and the droplet’s inertial forces are strong enough to overcome the resisting capillary pressure of the surface. In this case, the spreading lamella of the droplet breaks up and results in the change of the splashing mechanism from corona to prompt splashing. With this idea, García-Geijo *et al.* were able to relate the critical Weber number ($We_c = \frac{\rho D_0 v_{sp}}{2\sigma}$) of the droplet at the moment of splashing to a length scale ratio of the surface roughness and the initial radius ($D_0/2$) of the droplet:

$$We_c \geq K_2 (8 \cos \theta_0)^{3/5} \left(\frac{2R_{rms}}{D_0} \right)^{-3/5}, \quad (1)$$

where K_2 is a order unity constant and θ_0 the static contact angle between the liquid and smooth surface. In Fig. 5(a) we calculate the critical Weber number and length scale ratio corresponding to our experimental results for water (blue circles) and ethanol (yellow squares), revealing that they

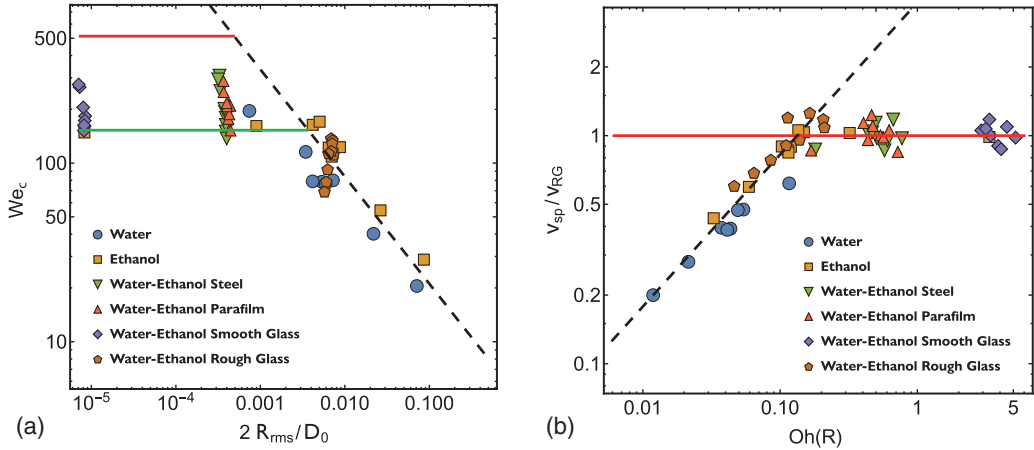


FIG. 5. (a) Calculated critical Weber number as a function of $2R_{rms}/D_0$ for the water (blue circles) and ethanol (yellow squares) measurements shown in Figs. 3(a) and 3(b), together with measurements of water-ethanol mixtures on rough glass (brown pentagons). Data for water-ethanol mixtures on stainless steel (downward green triangles), parafilm (upward red triangles), and smooth glass (purple diamonds) from de Goede *et al.* [10] are included. The red and green solid lines are the critical Weber numbers calculated using the splashing model of Riboux and Gordillo [14] for water and ethanol, respectively. The black dashed line is given by $We_c \geq K_2(\cos \theta_0)(2R_{rms}/D_0)^{-3/5}$ [Eq. (1)]. (b) Ratio v_{sp}/v_{RG} as a function of the Ohnesorge number with R_{rms} as the characteristic length scale $Oh(R_{rms})$ for the water and ethanol measurements on different surfaces (blue circles and yellow squares, respectively) and water-ethanol mixtures on a rough glass slide (brown pentagons). Data for water-ethanol mixtures on stainless steel (green triangles), smooth glass (purple diamonds), and parafilm (red triangles) from de Goede *et al.* [10] are included. The red line gives the prediction of the splashing model of Riboux and Gordillo, and the black line is the best fit of $Oh^{2/3}$.

roughly collapse onto the same curve. Similar to the direct measurements of the splashing velocity, the experimentally determined critical Weber number remains independent of the length scale ratio up until $2R_{rms}/D_0 \approx 0.004$, after which both the water and ethanol data again decrease with increasing $2R_{rms}/D_0$. Fitting Eq. (1) using the least-squares method to the critical Weber number above the critical length scale ratio shows that the model of García-Gejjo *et al.* predicts the power-law decrease in the critical Weber number relatively well (black dashed line in Fig. 3). As we do not know θ_0 for the sandpaper surfaces, $K_2(8 \cos \theta_0)^{3/5}$ is used as the fitting parameter for both the glass and sandpaper surfaces in this study, for which we find an average value of 5.2 ± 0.3 .

The splashing data of water-ethanol mixtures on glass (purple diamonds), stainless steel (green downward triangles), and parafilm (red upward triangles) surfaces from the study of de Goede *et al.* [10] were added to Fig. 5(a). These measurements do not seem to fully collapse on the same curve as the splashing velocity measurements from the present study: The critical Weber number seems to still increase with increasing surface tension. Calculating the critical Weber number using the splashing model of Riboux and Gordillo, the value We_c for water [red line in Fig. 5(a)] is much higher compared to the value of ethanol [green line in Fig. 5(a)], suggesting that the differences among We_c values for the water-ethanol mixtures therefore are caused by differences in the surface tension. We find similar differences when investigating water-ethanol mixtures on a rough glass slide.

The experimental results also show that the surface roughness at which the splashing mechanism transition takes place is dependent on the surface tension of the liquid. This is explained by the scaling model of García-Gejjo *et al.* [15], as a higher liquid surface tension increases the capillary pressure that the droplet's inertial forces need to overcome. It is possible to determine this "transition roughness" R_c for water and ethanol by calculating the roughness at the intersection between the

best fit of Eq. (1), and the critical Weber number determined from the splashing model of smooth surfaces [14]:

$$R_c = \frac{D_0}{2} \left(\frac{We_c}{5.3} \right)^{-5/3}. \quad (2)$$

For ethanol, this calculated roughness is $3.3 \mu\text{m}$ and agrees very well with the moment the measured splashing velocity of ethanol starts to decrease with increasing surface roughness (gray dashed line in Fig. 3). The transition roughness for water ($0.53 \mu\text{m}$) is higher than the transition roughness expected from the intersection between a line through the experimental results and the red horizontal line, which is around $0.1 \mu\text{m}$. In any case, this calculated roughness is lower than the lowest surface roughness for which the splashing of water was measured experimentally. The rough agreement between theory and experiments could indicate that the capillary pressure caused by the surface roughness could play a role in how a droplet splashes.

Although the critical Weber number scaling model of García-Geijo *et al.* works relatively well, it does not fully collapse the data onto a single curve as we have shown above. The problem with using the Weber number is that it neglects the liquid viscosity, which has a significant influence on droplet splashing, such as in the splashing model of Riboux and Gordillo used here. To fully understand droplet splashing on rough surfaces, the liquid viscosity also has to be incorporated.

To do this, we define a velocity ratio given by the measured splashing velocity and the theoretical prediction of the splashing model of Riboux and Gordillo [14]. As was shown that this model accurately predicts corona splashing when the surface is smooth enough, the velocity ratio will be equal to one for corona splashing and decrease when the surface roughness starts to change the splashing mechanism into prompt splashing. To incorporate the influence of the fluid parameters (liquid density, surface tension, and viscosity) we use the Ohnesorge number ($Oh = \eta / \sqrt{\rho\sigma L}$), where η is the viscosity, ρ the density, σ the surface tension, and L the typical length scale of the system. As prompt splashing of the liquid is likely caused by the surface roughness, we use the root-mean-square roughness R_{rms} as the length scale. When the velocity ratio and the Ohnesorge number are determined from the same experimental data that were also used to test the scaling model of García-Geijo *et al.*, we find that all the experimental data collapse onto a single curve [Fig. 5(b)]. Again, a transition between two regimes can be found, where the velocity ratio increases with Ohnesorge number until it reaches unity (red line) around $Oh \approx 0.15$, above which the velocity ratio is independent of the Ohnesorge number. Fitting the experimental velocity ratio using the least-squares method shows that the velocity ratio increases with $Oh^{2/3}$, or $R_{\text{rms}}^{-1/3}$, until it reaches unity.

While our Ohnesorge scaling model is an excellent fit to the experimental data, it lacks theoretical support. It is also important to note that the influence of the surrounding air has not been investigated in this study. The surrounding air (pressure) not only has an influence on corona splashing but also on prompt splashing, which can be influenced by changing the atmospheric pressure [5].

IV. CONCLUSIONS

In this paper, we investigated the influence of the surface roughness on droplet splashing. By changing the root-mean-square roughness of the impacted surface, we showed that the droplet splashing velocity is only affected when the droplet roughness is large enough to change to disrupt the spreading droplet lamella and change the droplet splashing mechanism from corona to prompt splashing. Finally, using Weber and Ohnesorge number scaling models, we have shown that the measured splashing velocity for both the water and ethanol on different surface roughness and water-ethanol mixtures collapses on a single curve, showing that the splashing velocity on rough surfaces scales with $Oh^{2/3}$ at atmospheric pressures.

These results suggest that it is possible, using the roughness of the surface, to determine whether corona splashing or prompt splashing will occur, and whether the splashing model for smooth surfaces can be applied. For the prompt splashing regime, we show that an Ohnesorge scaling with

the surface roughness as a typical length scale can be used to predict deviations from the splashing model by Riboux and Gordillo. While not yet theoretically underpinned, the Ohnesorge model is a first step in the direction of a scaling model that takes viscosity into account.

-
- [1] C. D. Stow and R. D. Stainer, The physical products of a splashing water drop, *J. Meteorol. Soc. Jpn.* **55**, 518 (1977).
 - [2] K. Range and F. Feuillebois, Influence of surface roughness on liquid drop impact, *J. Colloid Interface Sci.* **203**, 16 (1998).
 - [3] R. Rioboo, C. Tropea, and M. Marengo, Outcomes from a drop impact on solid surfaces, *Atomization and Sprays* **11**, 155 (2001).
 - [4] R. L. Vander Wal, G. M. Berger, and S. D. Mozes, The splash/non-splash boundary upon a dry surface and thin fluid film, *Exp. Fluids* **40**, 53 (2006).
 - [5] A. Latka, A. Strandburg-Peshkin, M. M. Driscoll, C. S. Stevens, and S. R. Nagel, Creation of Prompt and Thin-Sheet Splashing by Varying Surface Roughness or Increasing Air Pressure, *Phys. Rev. Lett.* **109**, 054501 (2012).
 - [6] I. V. Roisman, A. Lembach, and C. Tropea, Drop splashing induced by target roughness and porosity: The size plays no role, *Adv. Colloid Interface Sci.* **222**, 615 (2015).
 - [7] J. Hao, Effect of surface roughness on droplet splashing, *Phys. Fluids* **29**, 122105 (2017).
 - [8] M. A. Quetzeri-Santiago, A. A. Castrejón-Pita, and J. R. Castrejón-Pita, The effect of surface roughness on the contact line and splashing dynamics of impacting droplets, *Sci. Rep.* **9**, 15030 (2019).
 - [9] M. A. Quetzeri-Santiago, K. Yokoi, A. A. Castrejón-Pita, and J. R. Castrejón-Pita, Role of the Dynamic Contact Angle on Splashing, *Phys. Rev. Lett.* **122**, 228001 (2019).
 - [10] T. C. de Goede, N. Laan, K. G. de Bruin, and D. Bonn, Effect of wetting on drop splashing of newtonian fluids and blood, *Langmuir* **34**, 5163 (2017).
 - [11] A. Latka, A. M. Boelens, S. R. Nagel, and J. J. de Pablo, Drop splashing is independent of substrate wetting, *Phys. Fluids* **30**, 022105 (2018).
 - [12] P. De Gennes, F. Brochard-Wyart, and D. Quéré, *Capillarity and Wetting Phenomena: Drops, Bubbles, Pearls, Waves* (Springer, Berlin, 2004).
 - [13] D. Bonn, J. Eggers, J. Indekeu, J. Meunier, and E. Rolley, Wetting and spreading, *Rev. Mod. Phys.* **81**, 739 (2009).
 - [14] G. Riboux and J. M. Gordillo, Experiments of Drops Impacting a Smooth Solid Surface: A Model of the Critical Impact Speed for Drop Splashing, *Phys. Rev. Lett.* **113**, 024507 (2014).
 - [15] P. García-Gejjo, E. S. Quintero, G. Riboux, and J. M. Gordillo, Splashing of droplets impacting rough substrates, *J. Fluid Mech.* (2021), doi: 10.1017/jfm.2021.313.
 - [16] W. M. Haynes, *CRC Handbook of Chemistry and Physics* (CRC Press, Boca Raton, FL, 2014).
 - [17] G. Vazquez, E. Alvarez, and J. M. Navaza, Surface tension of alcohol+water from 20 to 50 °C, *J. Chem. Eng. Data* **40**, 611 (1995).
 - [18] T. Dey and D. Naughton, Cleaning and anti-reflective (AR) Hydrophobic coating of glass surface: A review from materials science perspective, *J. Sol-Gel Sci. Technol.* **77**, 1 (2016).
 - [19] J. Bachmann, A. Ellies, and K. Hartge, Development and application of a new sessile drop contact angle method to assess soil water repellency, *J. Hydrol.* **231**, 66 (2000).
 - [20] J. Bachmann, R. Horton, R. Van Der Ploeg, and S. Woche, Modified sessile drop method for assessing initial soil–water contact angle of sandy soil, *Soil Sci. Soc. Am. J.* **64**, 564 (2000).
 - [21] See Supplemental Material at <http://link.aps.org/supplemental/10.1103/PhysRevFluids.6.043604> for high-speed movies of the impacting and splashing droplets.