

Using world π^\pm -nucleus scattering data to constrain an intranuclear cascade model

E. S. Pinzon Guerra,¹ C. Wilkinson,² S. Bhadra,¹ S. Bolognesi,³ J. Calcutt,⁴ P. de Perio,^{5,*} S. Dolan,^{3,6} T. Feusels,^{7,8} G. A. Fiorentini,¹ Y. Hayato,^{9,10} K. Ieki,^{11,†} K. Mahn,⁴ K. S. McFarland,¹² V. Paolone,¹³ L. Pickering,⁴ R. Tacik,^{8,14} H. A. Tanaka,^{5,15} R. Terri,¹⁶ M. O. Waseko,¹⁷ M. J. Wilking,¹⁸ C. Wret,¹² and M. Yu¹

¹*York University, Department of Physics and Astronomy, Toronto, Ontario, Canada*

²*University of Bern, Albert Einstein Center for Fundamental Physics, Laboratory for High Energy Physics (LHEP), Bern, Switzerland*

³*IRFU, CEA Saclay, Gif-sur-Yvette, France*

⁴*Michigan State University, Department of Physics and Astronomy, East Lansing, Michigan 48824, USA*

⁵*University of Toronto, Department of Physics, Toronto, Ontario, Canada*

⁶*Ecole Polytechnique, IN2P3-CNRS, Laboratoire Leprince-Ringuet, Palaiseau, France*

⁷*University of British Columbia, Department of Physics and Astronomy, Vancouver, British Columbia, Canada*

⁸*TRIUMF, Vancouver, British Columbia, Canada*

⁹*Kavli Institute for the Physics and Mathematics of the Universe (WPI),*

Todai Institutes for Advanced Study, University of Tokyo, Kashiwa, Chiba, Japan

¹⁰*University of Tokyo, Institute for Cosmic Ray Research, Kamioka Observatory, Kamioka, Japan*

¹¹*Kyoto University, Department of Physics, Kyoto, Japan*

¹²*University of Rochester, Department of Physics and Astronomy, Rochester, New York 14627, USA*

¹³*University of Pittsburgh, Department of Physics and Astronomy, Pittsburgh, Pennsylvania 15260, USA*

¹⁴*University of Regina, Department of Physics, Regina, Saskatchewan, Canada*

¹⁵*SLAC National Accelerator Laboratory, Stanford University, Menlo Park, California 94025, USA*

¹⁶*Queen Mary University of London, School of Physics and Astronomy, London, United Kingdom*

¹⁷*Imperial College London, Department of Physics, London, United Kingdom*

¹⁸*State University of New York at Stony Brook, Department of Physics and Astronomy, Stony Brook, New York 11790, USA*



(Received 19 December 2018; published 22 March 2019)

The NEUT intranuclear cascade model is described and fit to a large body of π^\pm -nucleus scattering data. Methods are developed to deal with deficiencies in the available historical data, and robust uncertainty estimates are produced. The results are compared to a variety of simulation packages and the data. This work provides a method for tuning final state interaction models, which are of particular interest to neutrino experiments that operate in the few-GeV energy region, and provides results which can be used directly by the T2K and Super-Kamiokande Collaborations, for whom NEUT is the primary simulation package.

DOI: 10.1103/PhysRevD.99.052007

I. INTRODUCTION

There is ongoing work dedicated to understanding or measuring neutrino interactions in the 0.1–10 GeV energy range aimed to reduce systematic uncertainties for current

and future neutrino oscillation experiments (see, for example, recent reviews in Refs. [1–7]). The key problem is providing the best estimate of the incoming neutrino energy (as their oscillations are energy dependent) using measurable quantities in a detector: namely the outgoing particle content and kinematics. After a neutrino interacts with nucleon(s) within the nucleus, or quark(s) within a nucleon, the interaction products are propagated out of the nuclear medium before being measurable in a detector. Nucleons and pions have a considerable reinteraction probability when propagated through the nucleus, which can change the outgoing particle type, number, and kinematics. These effects are known in the neutrino scattering community as final state interactions (FSI).

*Present address: Columbia University, Physics Department, New York, New York 10027, USA.

†Present address: University of Tokyo, Department of Physics, Tokyo, Japan.

Published by the American Physical Society under the terms of the *Creative Commons Attribution 4.0 International license*. Further distribution of this work must maintain attribution to the author(s) and the published article's title, journal citation, and DOI. Funded by SCOAP³.

The effect of FSI is particularly important for oscillation analyses that use kinematic neutrino energy reconstruction, which selects neutrino events with a charged lepton and no pions in the final state ($CC0\pi$), such as T2K [8] and the planned Hyper-Kamiokande [9]. $CC0\pi$ events are dominated by charged-current quasielastic (CCQE) interactions $\nu_l + n \rightarrow l^- + p$ and $\bar{\nu}_l + p \rightarrow l^+ + n$. For such events, one can reconstruct the incoming neutrino energy perfectly, provided that the incoming neutrino beam direction is known, and the initial state struck nucleon is at rest [10]. In a nuclear environment, the neutrino energy reconstruction is smeared by the initial state nucleon momenta, as they are not at rest inside the nucleus. Additionally, biases are introduced to the reconstructed neutrino energy by introducing events in the $CC0\pi$ sample that are not CCQE, and so do not have the simple kinematic relationship to the neutrino energy. Events where a pion is produced at the primary neutrino interaction vertex but is later absorbed by the nucleus through FSI are a large contribution to this source of bias, thus FSI in carbon and oxygen are of great importance to the T2K oscillation analysis. Pions which interact outside the nucleus, known as secondary interactions (SI), can result in mis-reconstructing the event and can migrate events from one topology to another. Hadronic interactions inside (FSI) and outside (SI) the target nucleus are related, as discussed in Refs [11–14], although the relationship is not trivial. FSI and SI are among the nuclear effects that dominate systematic uncertainties for long-baseline neutrino oscillation analyses.

In this work, we describe the tuning of the π^\pm -A scattering model used in NEUT [15]—the primary interaction simulation package used by the T2K and Super-Kamiokande experiments—to the world dataset and describe its relation to the intranuclear semiclassical cascade models for FSI and SI. Although this work focuses on a single model, as it was motivated by the needs of the T2K experiment, the methods and the general conclusions developed herein are applicable to other cascade models [12,16–18]. Comparisons are made between the results from this tuning and various other models, including the GiBUU simulation package—which goes beyond the semiclassical approximations made by cascade models [19]. The procedures used to evaluate the impact of these cascade model uncertainties are described elsewhere [10,20] and will not be discussed here. The updates to the NEUT cascade model described have been incorporated in recent T2K analyses [21].

Section II provides an overview of the NEUT cascade model and the parameters used in this tuning work. Section III provides a summary of the external scattering datasets. Section IV describes the fit strategy and methods. Section V presents the best fit values for the FSI parameters and their correlation matrix. Section VI provides an overview and set of comparisons to other models for π^\pm -A interactions. Finally, Sec. VII presents our conclusions and outlook.

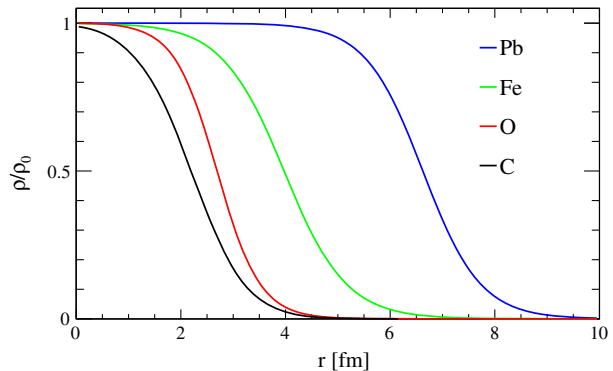


FIG. 1. The normalized three-parameter (two-parameter) Fermi model nuclear potentials shown for various nuclei (oxygen). Reproduced from Ref. [20].

II. NEUT CASCADE

Pion FSI are simulated in NEUT using a semiclassical intranuclear cascade model [15,20]. After a neutrino interaction occurs, the starting positions of the interaction products are chosen randomly from a nuclear density profile in the form of a three-parameter Fermi model (Woods-Saxon potential) described in Eq. (1) and shown in Fig. 1:

$$\frac{\rho(r)}{\rho_0} = \frac{1 + w \frac{r^2}{c^2}}{1 + \exp(\frac{r-c}{\alpha})}, \quad (1)$$

where r is the distance from the center of the nucleus, c is the nuclear radius, α is the surface thickness, and w modifies the shape of the potential. The parameters c , α , and w were determined from an analysis of electron-scattering measurements [22]. Changing these parameters within their uncertainties had a small effect on the pion survival probabilities due to FSI and were not considered further in this analysis. Note that the mass number (A) dependence of the model is encoded in these parameters. In the case of oxygen, the two-parameter Fermi model is used ($w = 0$). The initial kinematic information of outgoing particles is taken directly from the neutrino interaction simulation and is fed into the cascade model.

The initial interaction products are propagated “classically,” in finite steps within the nuclear medium. The steps are in space and were chosen as $dx = R_N/100$, where R_N is the size of the nucleus and is defined such that $\rho(R_N)/\rho_0 \approx 10^{-4}$, which for carbon is ~ 2.5 times the nuclear radius from Ref. [22]. The step spacing was chosen such that the probability of two or more interactions at each step was negligible. R_N acts to stop the cascade once the nuclear density, and thus the reinteraction probability, becomes negligible. The probabilities for each interaction type are calculated at each step, and a random number generator is used to determine which, if any, interaction takes place. The cascade continues until the particle is absorbed or its position exceeds R_N . Particles produced through inelastic FSI are also included in the cascade model

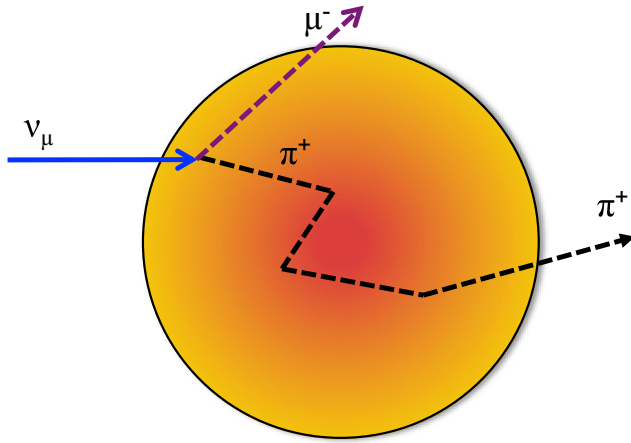


FIG. 2. Cartoon illustrating the effect of FSI in the intranuclear cascade model.

from the relevant production point(s). The particles are propagated independently and are only subject to the potential from the nucleus, not from other nucleons and pions. Figure 2 shows an example cartoon of the intranuclear cascade mechanism.

For low momentum pions (defined in NEUT as $p_\pi < 500$ MeV/c), tables computed from the model of Oset *et al.* [13] are used to determine quasielastic, single charge exchange, and absorption interaction probabilities inside the nucleus, and relate them to extranuclear π^\pm -A measurements. This model involves a many-body calculation in infinite nuclear matter with a local density approximation included. The π^\pm -A scattering is represented as a wave in a complex optical potential. Contributions from individual reaction channels are obtained by separating the real and complex parts of the potential and calculating the corresponding Feynman diagrams. For high momentum pions ($p_\pi > 500$ MeV/c), the interaction probabilities are calculated from π^\pm -A scattering data off free proton and deuterium compiled by the PDG [23]. The two models are blended linearly in the $400 < p_\pi < 500$ MeV/c region to avoid discontinuities.

The most commonly used generators and simulation toolkits, including GENIE [18], NuWro [12], FLUKA [16], and Geant4 [17], have similar cascade models implemented, although the details vary. The notable exception is GiBUU [19], where the Boltzmann-Uehling-Uhlenbeck transport equations are solved for a more complete description of the nuclear medium. In GiBUU, the particles experience the potential from both the excited nuclear remnant and the other particles produced in the initial interaction. Comparisons between the results of this work, the data, and a variety of these alternate simulations are presented in Sec. VI.

The model is parametrized by the scaling factors summarized in Table I, henceforth referred to simply as “FSI parameters” (f_{FSI}). Each parameter scales the corresponding microscopic probability of a π^\pm interaction at each step of the cascade, except for f_{CX} , which scales the

TABLE I. Description of the NEUT pion FSI parameters used in the fits described in this work. The overlap in the momentum regions is due to blending of the high and low energy models in NEUT as described in the text.

Parameter	Description	Momentum region [MeV/c]
f_{ABS}	Absorption	< 500
f_{QE}	Quasielastic scatter	< 500
f_{CX}	Single charge exchange	< 500
f_{QEH}	Quasielastic scatter	> 400
f_{CXH}	Single charge exchange	> 400
f_{INEL}	Hadron (N + n π) production	> 400

charge exchange fraction of low momentum quasielastic (QE) scattering.

A reweighting scheme is used to allow the propagation of variations of these parameters to T2K analyses [10,20]. The scheme uses the information in the cascade for each event and recalculates the interaction probabilities for each step with varied parameters to obtain a new value for the event probability. The FSI weight is defined as the ratio between the varied and nominal total event probabilities. However, the reweighting procedure is not exact due to the factorization into individual parameter variations, so it was not used in this work.

III. SUMMARY OF EXTERNAL SCATTERING DATA

Although T2K analyses are predominantly interested in light nuclear targets (carbon and oxygen), there are many heavier targets in the T2K detectors [24,25]. As such, this work includes external data taken with carbon, oxygen, aluminium, iron, copper, and lead targets.

We used data from π^+ and π^- beams over a momentum range from 60–2000 MeV/c. The interaction channels are defined exclusively from the number of pions in the final state, with any number of nucleons. This allows for direct comparisons between the external measurements of cross sections and the NEUT predicted cross sections. The following interaction channels were used:

- (i) *Absorption (ABS)*: the incident pion is absorbed by the nucleus, and thus no pions are observed in the final state.
- (ii) *Quasielastic scattering (QE)*: only one pion is observed in the final state, and it has the same charge as the incident beam. The interaction is with a nucleon within the nucleus which differentiates QE from *elastic* scattering, where the interaction is with the nucleus as a whole. There is no requirement for the struck nucleon to be observed in the final state, as it may undergo FSI itself and not be observable.
- (iii) *Single charge exchange (CX)*: the charged pion interacts with the nucleus and a single π^0 is observed in the final state.

TABLE II. Summary of π^\pm -A scattering data used for this tuning, including beam polarity, nuclear target type(s), momentum range, and interaction channel(s). Some of these experiments may have measured data on other target nuclei that are not considered here.

Reference	Polarity	Targets	p_π [MeV/c]	Channel(s)
B. W. Allardyce <i>et al.</i> [27]	π^\pm	^{12}C , ^{27}Al , ^{207}Pb	710–2000	REAC
A. Saunders <i>et al.</i> [28]	π^\pm	^{12}C , ^{27}Al	116–149	REAC
C. J. Gelderloos <i>et al.</i> [29]	π^-	^{12}C , ^{27}Al , ^{63}Cu , ^{207}Pb	531–615	REAC
F. Binon <i>et al.</i> [30]	π^-	^{12}C	219–395	REAC
O. Meirav <i>et al.</i> [31]	π^\pm	^{12}C , ^{16}O	128–169	REAC
C. H. Q. Ingram [32]	π^+	^{16}O	211–353	QE
S. M. Levenson <i>et al.</i> [33]	π^+	^{12}C	194–416	QE
M. K. Jones <i>et al.</i> [34]	π^+	^{12}C , ^{208}Pb	363–624	QE, CX
D. Ashery <i>et al.</i> [35]	π^\pm	^{12}C , ^{27}Al , ^{56}Fe	175–432	QE, ABS + CX
H. Hilscher <i>et al.</i> [36]	π^-	^{12}C	156	CX
T. J. Bowles [37]	π^+	^{16}O	128–194	CX
D. Ashery <i>et al.</i> [38]	π^\pm	^{12}C , ^{16}O , ^{207}Pb	265	CX
K. Nakai <i>et al.</i> [39]	π^\pm	^{27}Al , ^{63}Cu	83–395	ABS
E. Bellotti <i>et al.</i> [40]	π^+	^{12}C	230	ABS
E. Bellotti <i>et al.</i> [41]	π^+	^{12}C	230	CX
I. Navon <i>et al.</i> [42]	π^+	^{12}C , ^{56}Fe	128	ABS + CX
R. H. Miller <i>et al.</i> [43]	π^-	^{12}C , ^{207}Pb	254	ABS + CX
E. S. Pinzon Guerra <i>et al.</i> [26]	π^+	^{12}C	206–295	ABS, CX

- (iv) *Absorption + single Charge exchange (ABS + CX)*: sum of ABS and CX (e.g., a charged pion is present in the initial state, but none are observable in the final state).
- (v) *Reactive (REAC)*: sum of ABS + CX + QE, double charge exchange, and hadron production. Double charge exchange events have a single pion in the final state which has the opposite charge to the incident beam. Hadron production events have final states with more than one pion.

These channels do not have a one-to-one correspondence to the parameters defined in Table I, but describe experimentally distinguishable interactions. Elastic scattering is experimentally defined as events with a very small scattering angle, where there is a very small momentum transfer to the target nucleus. Measurements of the elastic and total (reactive + elastic) cross sections are not used for this tuning as NEUT does not simulate elastic π^\pm -A scattering.

Table II lists the external data, specifying the channels, targets, and p_π range measured by each experiment. Most of the datasets used date from the 1950s to the 1990s and contain limited information: in particular, covariances between data points in each channel, and between channels, are not available. A notable exception is the recent measurement of the ABS and CX cross sections by the DUET Collaboration [26]. These measurements were partially motivated by the need to cover the lack of ABS measurements in the $\Delta(1232)$ resonance region, which is of particular importance for T2K. Figure 3 shows the cross sections measured by DUET, and Fig. 4 shows the covariance matrix provided between all DUET data points.

There are some changes to the datasets used, compared to earlier iterations of this work, described in Refs. [10,20]. In addition to the new results from the DUET Collaboration, Refs. [31,36] have been added. Measurements of exclusive pion production [44,45], double charge exchange [46], and diffractive production [47] are not used, as more inclusive channels are preferred here. Reference [48] was taken on nuclear targets other than those identified in Table II, and so is not included here. Some measurements of ABS [34,49,50] were removed as those were performed with the goal of understanding multinucleon correlations and concentrated on final states with multiple protons instead of the more inclusive cross

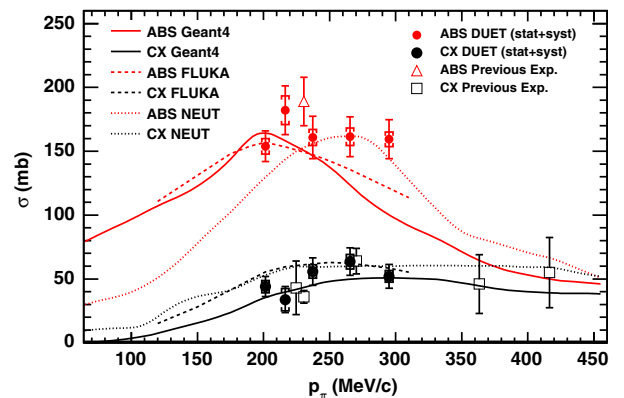


FIG. 3. DUET measurements of ABS and CX compared with previous measurements [34,38,40,41] and ABS (red) and CX (black) model predictions from GEANT4 (solid line), FLUKA (dashed line), and NEUT (dotted line). Reproduced from Ref. [26].

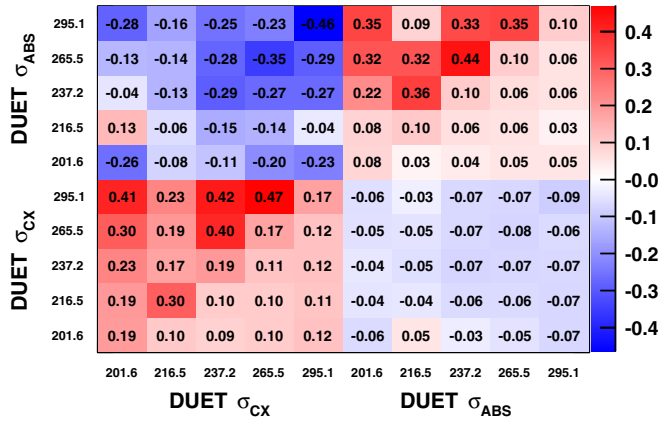


FIG. 4. Fractional covariance and correlation for the DUET measurements of ABS and CX. The diagonal and lower triangle show the covariance ($\text{sgn}(V_{ij}) \times \sqrt{V_{ij}}$), while the upper triangle of the matrix shows the correlation coefficients. Reproduced from Ref. [26].

sections considered here. Measurements of the total cross section were not used [51,52], and measurements of a reactive cross section where an optical model was used to separate the reactive and the elastic components from the total cross section were neglected [53–55] as it introduces model dependence. Finally, Ref. [56] has been neglected as the normalization of the results is inconsistent with other measurements, discussed in Ref. [27].

IV. FIT STRATEGY

The goal of the fit is twofold:

- (1) Find the set of FSI parameters that best fits the external scattering data listed in Sec. III.

TABLE III. Minimum and maximum values for the NEUT FSI parameters allowed in the finite grid of precomputed cross section predictions.

Parameter	Grid min.	Grid max.	Step size
f_{QE}	0.1	1.7	0.1
f_{ABS}	0.35	1.95	0.1
f_{CX}	0.1	1.6	0.1
f_{INEL}	0.2	2.6	0.2
f_{QEH}	0.8	2.8	0.2
f_{CXH}	1.2	2.4	0.2

- (2) Set uncertainties for the FSI parameters that span the errors from the external data, and extract correlations between the parameters.

Given the computational cost of the NEUT cascade, predictions for the relevant π^\pm -A cross sections, $\sigma_j^{\text{NEUT}}(f_{\text{FSI}})$, as a function of the FSI parameters, f_{FSI} , were precomputed for a finite grid of FSI parameters. The FSI parameters are rescaling parameters of the nominal NEUT FSI prediction, where a parameter value of 1 is the nominal NEUT value, and are not fundamental physics parameters in their own right. The minimum and maximum values allowed for the FSI parameters and the step sizes are summarized in Table III. The predictions were only calculated for values of p_π for which data were available to reduce the computational load. The predictions were calculated by running the NEUT cascade with a monoenergetic pion beam using the `piscat` simulation of NEUT [15,20].

The best fit is found by minimizing the χ^2 statistic defined by

$$\chi^2(f_{\text{FSI}}) = \sum_i^{\text{Datasets}} \left(\sum_j^{n_i} \frac{1}{n_i} \left(\frac{\sigma_j^{\text{Data}} - \lambda_i^{-1} \sigma_j^{\text{NEUT}}(f_{\text{FSI}})}{\Delta \sigma_j^{\text{Data}}} \right)^2 + \left(\frac{\lambda_i - 1}{\epsilon_i} \right)^2 \right) + \sum_{i,j}^{10} (\sigma_i^{\text{DUET}} - \sigma_i^{\text{NEUT}}(f_{\text{FSI}})) (V_{ij}^{-1})^{\text{DUET}} (\sigma_j^{\text{DUET}} - \sigma_j^{\text{NEUT}}(f_{\text{FSI}})), \quad (2)$$

where n_i represents the number of data points in each dataset except DUET, σ_j^{Data} and $\Delta \sigma_j^{\text{Data}}$ are the external dataset cross sections and their respective uncertainties, σ_i^{DUET} are the DUET data, and $(V_{ij})^{\text{DUET}}$ is the DUET covariance matrix shown in Fig. 4. Note that every channel measured by the uncorrelated datasets (n_i) is treated as a single, uncorrelated point, in the fit. The normalization parameters λ_i were included as penalty terms for each dataset (except DUET). The uncertainty for the normalization parameters (ϵ_i) was assigned to be 40% following the representative correlations in the DUET datasets as seen in Fig. 4, and was an *ad hoc* choice made for this analysis.

These λ_i normalization parameters include a fully correlated component between the data points of each dataset, to allow the effect of no correlations to be investigated. Note that they are not used as fit parameters for all fits described in this work.

The dependence of the χ^2 in Eq. (2) to the f_{CXH} parameter was found to be very weak, so it was decided to fix this parameter to its nominal value for the fit. An additional parameter designed to uniformly scale all the microscopic interaction probabilities (f_{ALL}) was also investigated, but similarly, it was found to have little impact on the fit and was consequently not included.

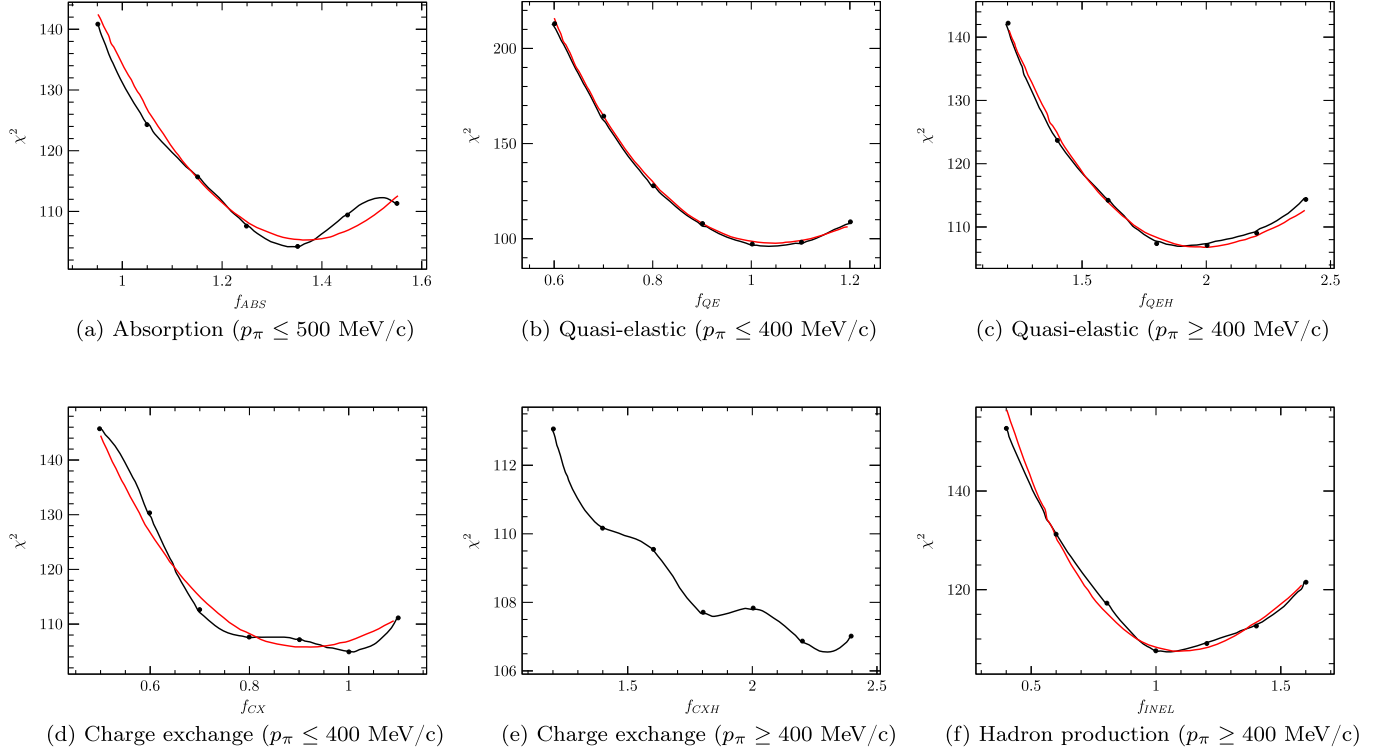


FIG. 5. One-dimensional projections of the interpolated χ^2 grid for a point around the center of the grid using GNU-Octave (black) and TMultiDimFit (red). The points are given around the point: $f_{\text{ABS}} = 1.25$, $f_{\text{QE}} = 0.90$, $f_{\text{QEH}} = 1.80$, $f_{\text{CX}} = 0.80$, $f_{\text{CXH}} = 1.80$, $f_{\text{INEL}} = 1.00$. The points are the χ^2 values in the precomputed finite grid which is being interpolated.

The minimization was performed using the MIGRAD algorithm of the MINUIT package [57]. The advantage of using this algorithm is that it provides both best fit parameters and their correlations. The difficulty is that the algorithm requires a χ^2 surface with smooth first and second order derivatives. Two different interpolation methods were used to smooth the finite precomputed grid, to determine if biases were introduced by either.

- (1) *TMultiDimFit*: The TMultiDimFit [58] class of ROOT [59] was used to obtain a polynomial expression for the χ^2 grid in terms of the FSI parameters. The best-fit polynomial function contained up to fourth-degree polynomials with 53 terms in total, including cross terms. A comparison of the best-fit polynomial function to the finite grid reported a $\chi^2/\text{n.d.o.f}$ of 0.29.
- (2) *GNU-Octave n-dim splines*: The `interp` function of GNU-Octave [60] was used to obtain a multidimensional spline interpolation of the χ^2 grid. Cubic splines are evaluated around the requested point.

In general, it is difficult to compare multidimensional distributions and the two interpolation methods. Their one-dimensional projections of each is shown for illustrative purposes in Fig. 5. The f_{CXH} parameter caused problems with the convergence of the TMultiDimFit parametrization due to its low constraining power (there is very little available relevant data), and thus was not included for this

comparison. The interpolation methods are found to be consistent, and no significant biases are expected.

V. FIT RESULTS

The fit was carried out in two ways. First, the normalization parameters for each dataset, λ_i from Eq. (2), were fixed to their nominal value of 1.0, with results shown in Sec. VA. Second, the λ_i 's were treated as constrained parameters in the fit, as described in Sec. VB. The former strategy forms the main result of this work, whereas the latter was used as a cross-check.

TABLE IV. Postfit FSI parameters and the minimum χ^2 value with fixed normalization parameters using the TMultiDimFit and GNU-Octave interpolation methods.

Parameter	Best fit $\pm 1\sigma$	
	TMultiDimFit	GNU-Octave
f_{QE}	1.07 ± 0.06	1.07 ± 0.04
f_{ABS}	1.50 ± 0.08	1.40 ± 0.06
f_{CX}	0.69 ± 0.05	0.70 ± 0.04
f_{INEL}	0.89 ± 0.20	1.00 ± 0.15
f_{QEH}	1.90 ± 0.25	1.82 ± 0.11
$\chi^2/\text{n.d.o.f}$	150.74/59	149.03/59

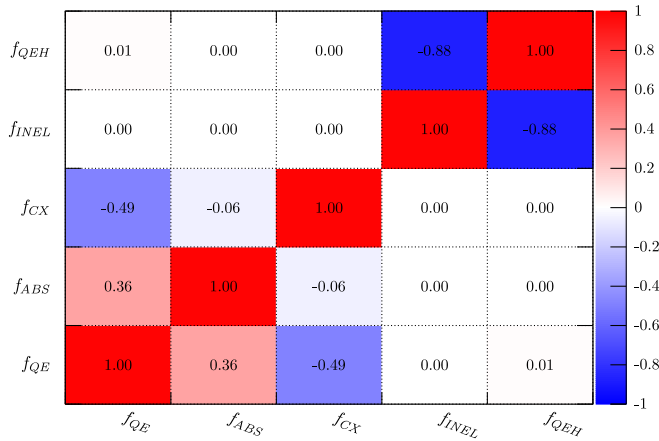


FIG. 6. Correlation matrix using the TMultiDimFit interpolation for the fit with fixed normalization parameters.

A. Fixed normalization parameters

The best fit FSI parameters, while keeping the normalization parameters fixed, are presented in Table IV for both interpolation methods. The spread in the results from the methods was covered by the uncertainties on the fitted parameters. The χ^2 between the two methods, using the covariance matrix calculated for the GNU-Octave fit, was 4.14 for 5 degrees of freedom. The minimum χ^2 values from each method are in agreement and are shown in the last row of Table IV, along with the number of degrees of freedom in the fit. This confirms that the interpolation methods are not introducing biases and indicates that the χ^2 did not have a local minimum that would affect the minimization process. Thus, no additional uncertainties due to the interpolation method choice were deemed necessary.

Figures 6 and 7 show the covariance matrices obtained from MINUIT using each interpolation method. Stronger correlations across the FSI parameters are observed when using the TMultiDimFit interpolation. This can be understood as the effect of the polynomial parametrization, which inherently carries strong correlations from the large number of cross terms. For this reason, it was decided to use the GNU-Octave interpolation for the final results.

B. Varying normalization parameters

To investigate the dependence of the χ^2 and fit results on each dataset, the normalization parameters [λ_i in Eq. (2)] were allowed to vary. This keeps the n.d.o.f the same, but the χ^2 is expected to reduce as correlated changes in the datasets from a single measurement introduce a smaller χ^2 penalty (e.g., if there is a flux modeling issue with a dataset). This approach has been used elsewhere when fitting to datasets with missing covariance information [61,62]. Including these parameters as pull terms, rather than adding correlations between data points in a covariance matrix, gives greater insight into the behavior of the

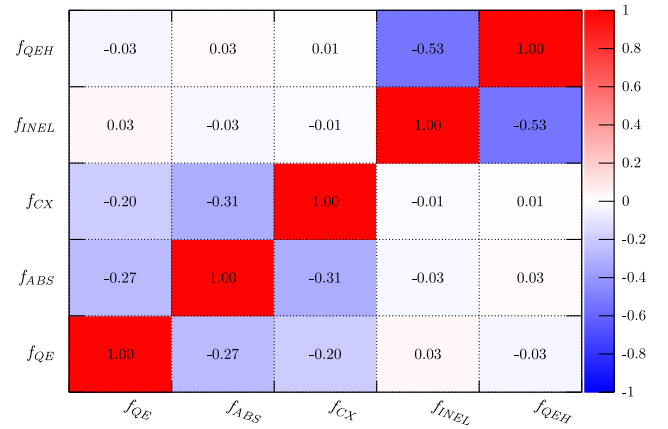


FIG. 7. Correlation matrix using the GNU-Octave interpolation for the fit with fixed normalization parameters.

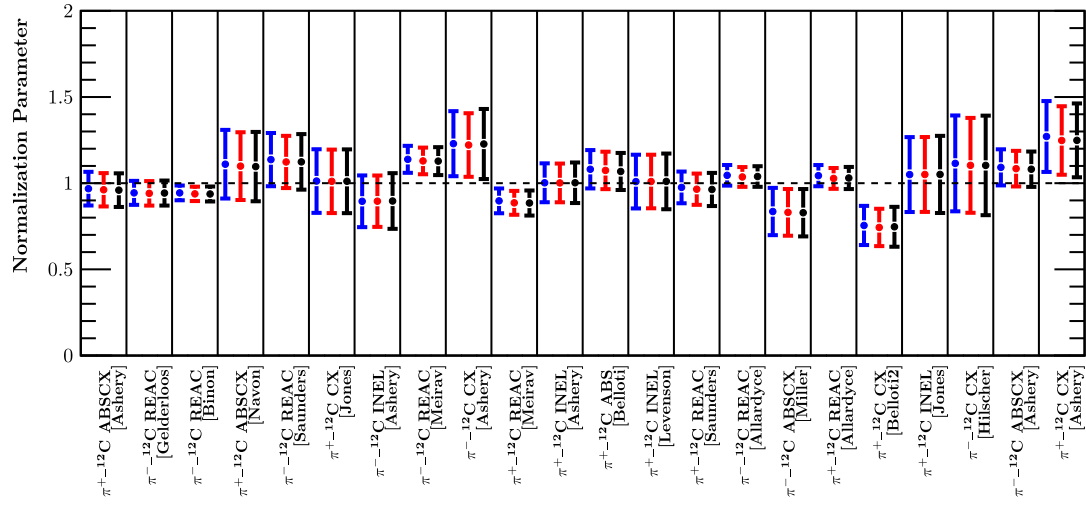
fitter. For instance, a dataset with data points that all pull strongly on the fitted FSI parameters in the same direction in Sec. VA would have a normalization parameter largely deviating from 1.0.

The fit was performed for three selections of external datasets: data on carbon nuclei only; data on light nuclei (carbon, oxygen, aluminum); and data on light and heavy nuclei (carbon, oxygen, aluminum, iron, copper, and lead). This was done to investigate how the cascade model scales with increasing nuclear size, as well as the effect on the FSI parameters. Table V shows the best fit FSI parameters for each case using the GNU-Octave method. The agreement across the three cases indicates that the model is able to consistently describe all the data, and that the fit is well behaved.

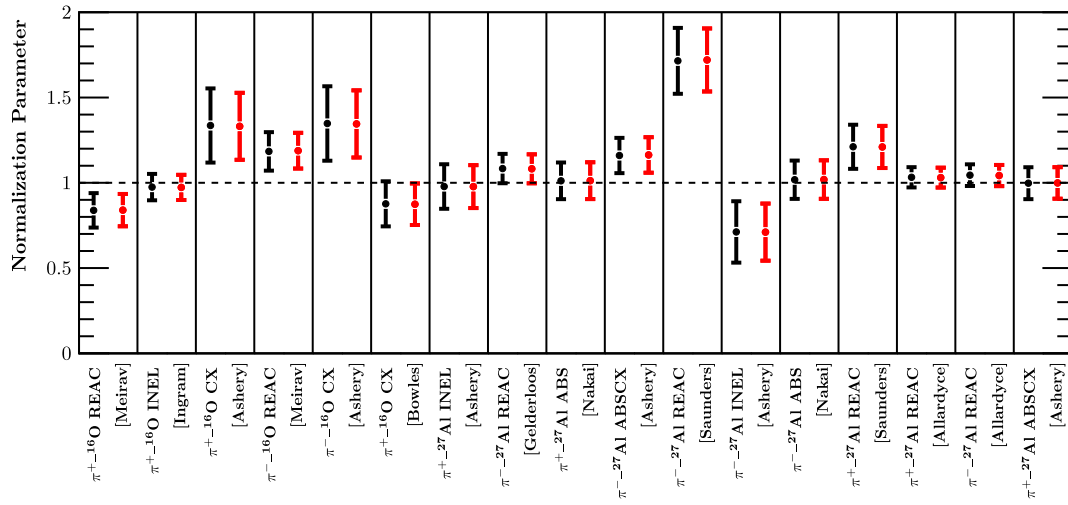
Figure 8 shows the fitted normalization parameters for the three selections of external data. The normalization parameters roughly follow a Gaussian distribution, and the results from each of the three cases essentially overlap each other. The varying sizes of the postfit errors are understood to be a consequence of assigning the same 40% prefit error to all the parameters, as different channels have been experimentally measured with different levels of precision. For instance, inelastic and reactive processes tend to have

TABLE V. Postfit NEUT FSI parameters and the minimum χ^2 /n.d.o.f values obtained for fits with floating normalization parameters and the specified external data selections.

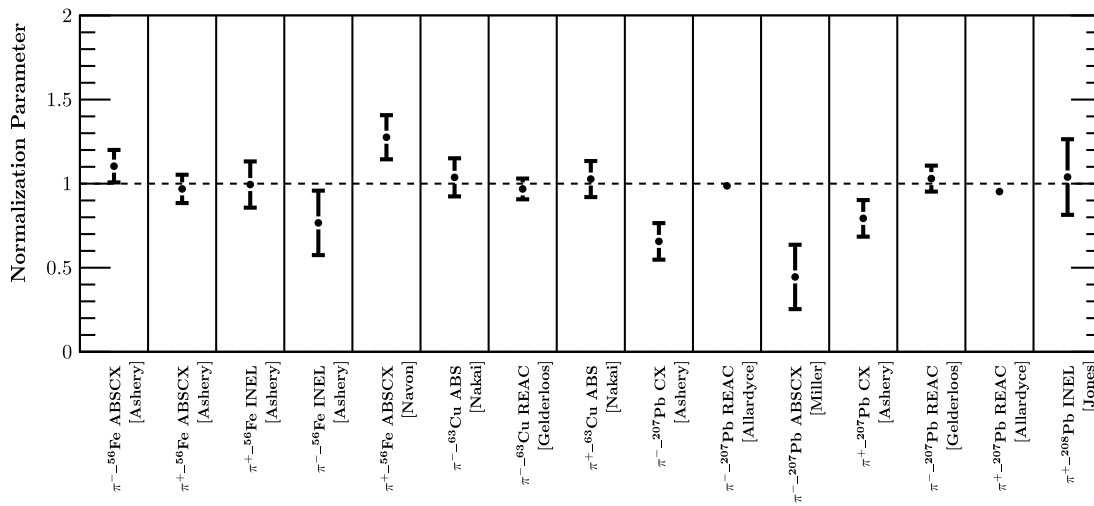
Parameter	Best fit $\pm 1\sigma$		
	Carbon only	Light nuclei	All nuclei
f_{QE}	1.07 ± 0.07	1.08 ± 0.07	1.08 ± 0.07
f_{ABS}	1.24 ± 0.05	1.25 ± 0.05	1.26 ± 0.05
f_{CX}	0.79 ± 0.05	0.80 ± 0.04	0.80 ± 0.04
f_{INEL}	0.63 ± 0.27	0.71 ± 0.21	0.70 ± 0.20
f_{QEH}	2.16 ± 0.34	2.14 ± 0.24	2.13 ± 0.22
χ^2 /n.d.o.f	18.36/27	40.14/44	53.48/59



(a) ^{12}C -only datasets



(b) Other light nuclei



(c) Heavy nuclei

FIG. 8. Postfit normalization parameters for each dataset for carbon-only (blue), light nuclei (red), and all-nuclei (black) fits. Some points overlap each other.

TABLE VI. Postfit NEUT FSI parameters and the minimum $\chi^2/\text{n.d.o.f}$ values obtained for fits with floating normalization parameters and the five datasets with the strongest pulls in Fig. 8 removed.

Parameter	Carbon only	Best fit $\pm 1\sigma$	
		Light nuclei	All nuclei
f_{QE}	1.07 ± 0.08	1.09 ± 0.06	1.09 ± 0.06
f_{ABS}	1.23 ± 0.05	1.25 ± 0.04	1.26 ± 0.04
f_{CX}	0.79 ± 0.05	0.81 ± 0.04	0.80 ± 0.04
f_{INEL}	0.63 ± 0.27	0.71 ± 0.21	0.71 ± 0.19
f_{QEH}	2.15 ± 0.34	2.14 ± 0.24	2.13 ± 0.21
$\chi^2/\text{n.d.o.f}$	17.95/26	35.55/42	45.13/54

much smaller uncertainties, and the model does much better there.

As a further cross-check, the fit was repeated after removing the five datasets whose postfit normalization parameters were more than 1σ away from the nominal value of 1.0 in Fig. 8. Table VI shows the postfit FSI parameters for that study. The effect on all parameters and the remaining normalizations was found to be negligible.

C. Drawing error envelopes

The constraints of the FSI parameters from the fit were used to form the 1σ variations of the macroscopic scattering cross sections to allow for comparisons with external data. This was done as follows:

- (1) Generate a random correlated throw from the obtained covariance matrix (e.g., Fig. 7) through Cholesky decomposition. Throws outside the finite grid defined in Table III are discarded since the interpolation does not apply.
- (2) Draw the probability distribution function (PDF) for each momentum value for which $\sigma^{\text{NEUT}}(f_{\text{FSI}})$ has been calculated using the GNU-Octave spline interpolation. Figures 9 and 10 show examples of these

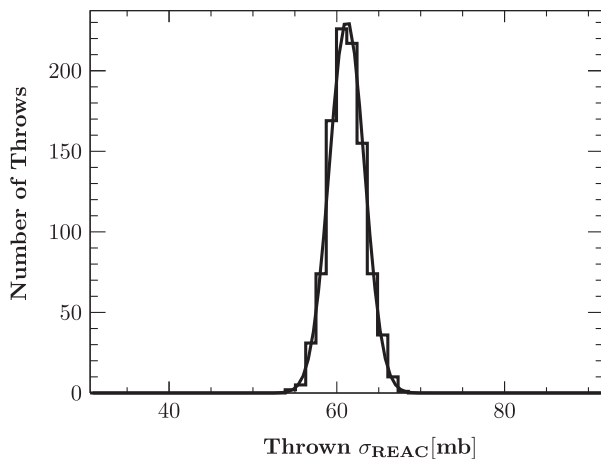


FIG. 9. PDF for π^\pm - ^{12}C σ_{REAC} for $p_\pi = 20.0$ MeV/c.

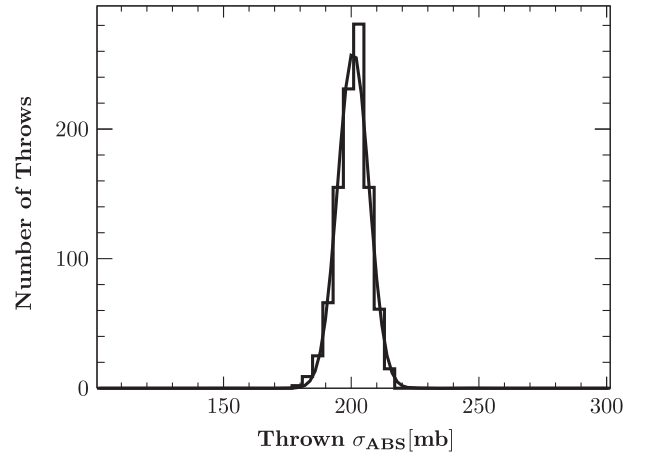


FIG. 10. PDF for π^\pm - ^{12}C σ_{ABS} for $p_\pi = 265.07$ MeV/c.

distributions for two combinations of interaction channel and momentum.

- (3) Fit a Gaussian function to the PDFs.
- (4) Use the mean and variance from the Gaussian for each value of momentum to draw the 1σ error envelopes.

Figure 11 shows the resulting error bands for the π^\pm - ^{12}C cross sections, obtained using the constraints from the correlation matrix in Fig. 7 and the procedure described above. The coverage of the error is insufficient when using the constraints from Table IV, and was also true for the data on more nuclei. This is dealt with in Sec. V D.

D. Error inflation

The problem of lack of coverage arises from fitting to datasets for which no covariances are provided. Here we follow the same procedure as described in Ref. [61], which builds on an error inflation procedure defined in Ref. [62]. We inflate the fit uncertainties such that 68% of the data are indeed covered at 1σ , as one would expect from the fit, while keeping the postfit central values and correlations of the FSI parameters. Explicitly, we scale the cross section uncertainties obtained from the fit, $\Delta\sigma_j^{\text{MC}}(f_{\text{FSI}})$, by some scaling factor ξ , and calculate the level of agreement between the pion-nucleus cross section corresponding to the best fit FSI parameters, $\sigma_j^{\text{MC}}(f_{\text{FSI}})$, and the data, σ_j^{Data} , given the inflated uncertainty on the pion-nucleus cross section, $\Delta\sigma_j^{\text{MC}}(\xi\Delta f_{\text{FSI}})$, using the figure of merit Ψ ,

$$\Psi = \frac{\sigma_j^{\text{Best fit}}(f_{\text{FSI}}) - \sigma_j^{\text{Data}}}{\Delta\sigma_j^{\text{MC}}(\xi\Delta f_{\text{FSI}})}. \quad (3)$$

By increasing the scaling factor ξ until the distribution of Ψ plotted for all data points has a root mean square (RMS) of 1, we enforce the expected coverage in a naive way—e.g. 68% of the data are covered by the postfit uncertainties at 1σ , neglecting correlations between data points, and between different points in the Monte Carlo (MC). This

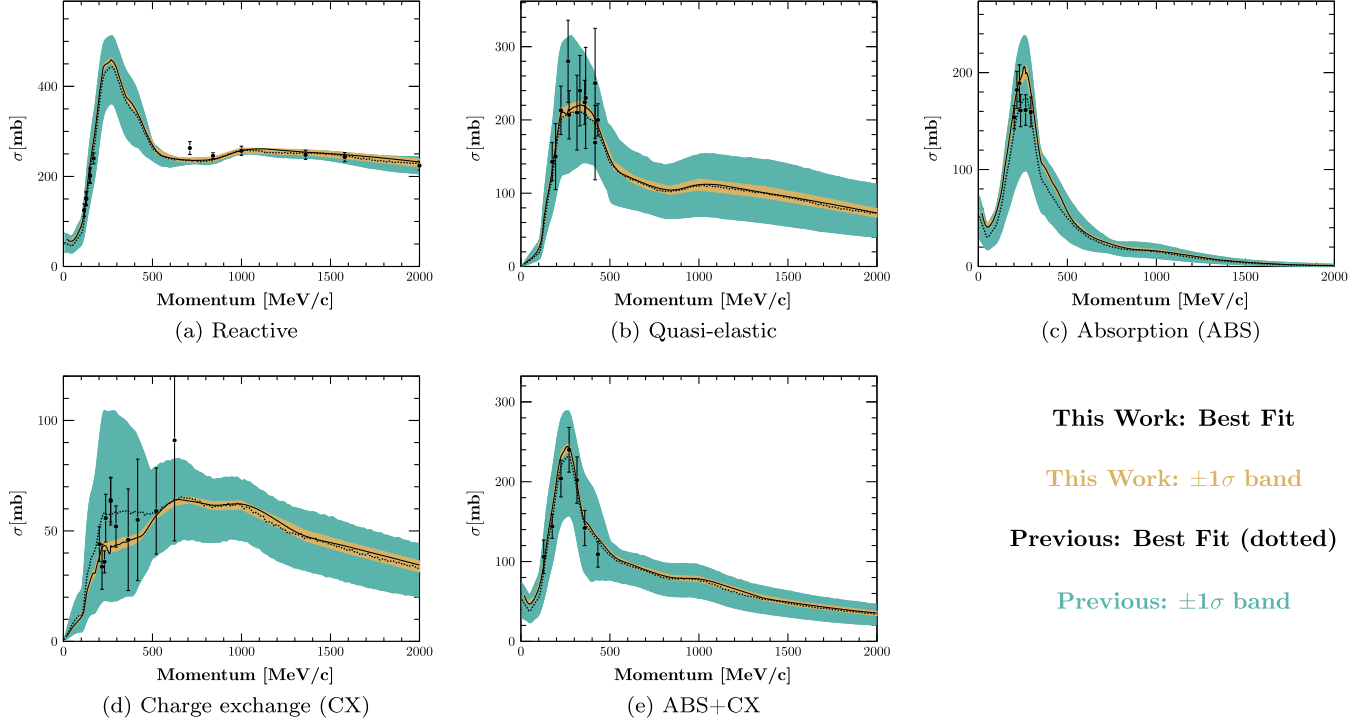


FIG. 11. Comparison of the available $\pi^+-^{12}\text{C}$ cross section external data with the NEUT best fit (solid black line) and 1σ band (red), and the best fit (dashed black line) and 1σ band (blue) obtained from a previous iteration of this fit [10,20].

approximation almost certainly results in overcoverage, and very conservative inflated uncertainty bands, but given the lack of information available in the fit, rigorous definitions of coverage are not possible and we prefer over- to undercoverage. Table VII shows the Ψ distribution mean and RMS for various values of ξ . A linear fit to these RMS values was performed, and the scaling value for which the RMS was equal to 1, $\xi = 57.0$, was found. Such a large scaling factor is not very surprising given the large number of datasets without correlations and is consistent with the results found elsewhere [62].

The final postfit values of the FSI parameters after applying scaling to the χ^2 surface are shown in Table VIII. As the correlation among parameters is not affected by the scaling procedure the correlation matrix presented in Fig. 7 remains the same. The scaled uncertainty bands for $\pi^+-^{12}\text{C}$ scattering is shown in Fig. 12 and can be compared with the unscaled uncertainty bands shown in Fig. 11. The results are compared to earlier work [10,20]

TABLE VII. Ψ for various scaling factors.

Scale	Mean	RMS
1/1	0.39	2.86
1/9	0.00	2.02
1/25	-0.11	1.28
1/49	-0.14	1.09
1/81	-0.09	1.00

dedicated to constraining the FSI parameters to data on T2K. Comparisons of the old and new results with all considered π^\pm -A combinations is found in Ref. [63]. We note that after scaling of the uncertainties, there is good agreement found between the fit results with fixed and varied normalization parameters, shown in Tables V and VIII.

VI. MODEL COMPARISONS

The modeling of π^\pm -A interactions is fundamental for a complete description of neutrino-nucleus interactions. All complete neutrino event generators include a model for these final state interactions. In this section, a variety of available models are compared to the tuned NEUT model with scaled uncertainties, presented in this work, and the data. The models can be divided into the following three categories:

(1) *Effective models*

- (i) GENIE hA is a simple, data-driven, effective model [11,18]. Instead of a full cascade model,

TABLE VIII. Postfit FSI parameters after error scaling.

Parameter	Best fit $\pm 1\sigma$
f_{QE}	1.07 ± 0.31
f_{ABS}	1.40 ± 0.43
f_{CX}	0.70 ± 0.30
f_{INEL}	1.00 ± 1.10
f_{QEH}	1.82 ± 0.86

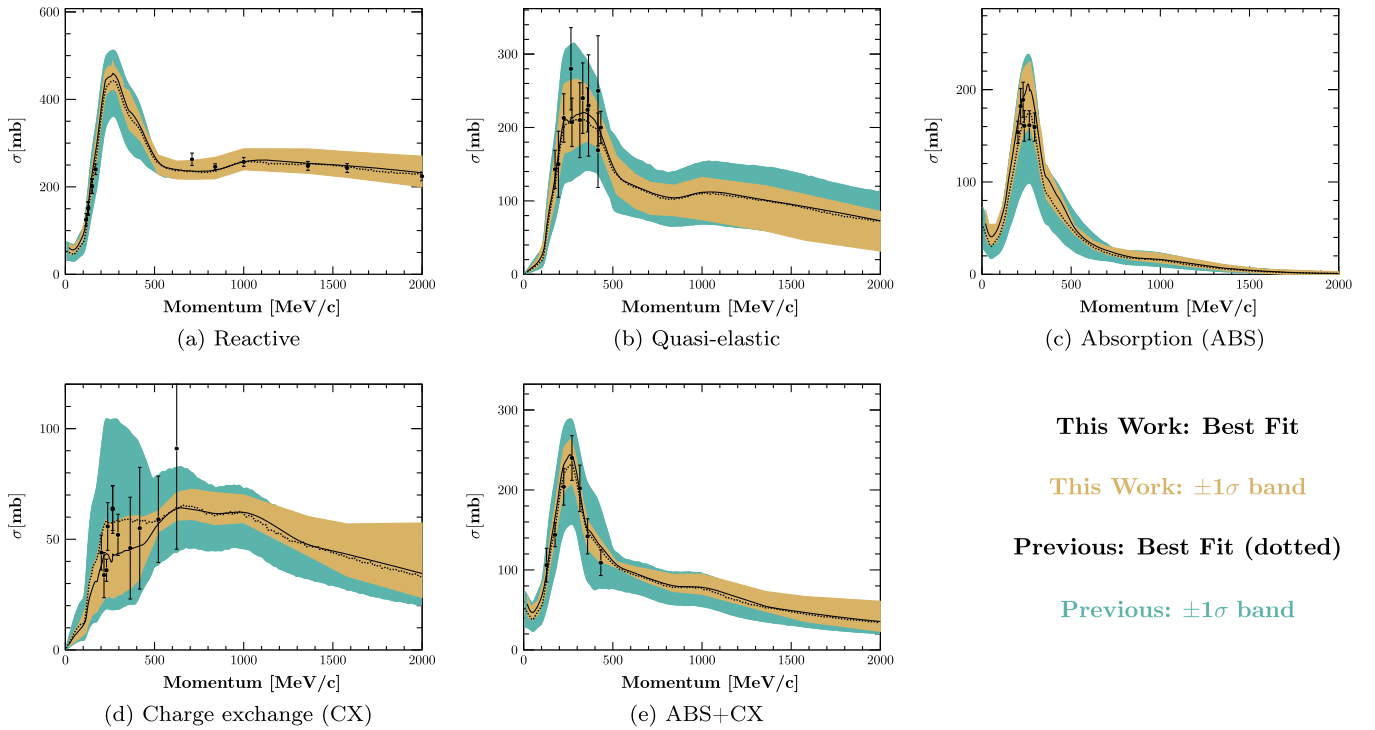


FIG. 12. Comparison of the available π^\pm - ^{12}C cross section external data with the NEUT best fit (solid black line) and 1σ band after scaling (red), and the best fit (dashed black line) and 1σ band (blue) obtained from a previous iteration of this fit [10,20].

the total cross section for each scattering process within the nucleus is calculated—effectively reducing the cascade to a single step. The model is normalized to pion/nucleon–iron scattering data, and cross sections for targets other than iron are obtained by scaling by $A^{2/3}$ [11]. The hA model is the default in GENIE and has been used by most MINERvA and NOvA analyses published to date [64,65].

- (ii) The GENIE hA 2014 model is a development version of the hA model and is included here for completeness. It includes a wider range of π^\pm -A data to reduce the need for $A^{2/3}$ extrapolation [66].
- (2) *Cascade models* all follow the same general principles as the NEUT cascade model described in Sec. II. The implementation, input data, and theoretical approximations often differ to reflect the motivations and priorities of the simulation packages.
 - (i) GENIE hN is an alternative full cascade model for FSI available in GENIE [11,18]. Only data on free nucleons are used as input. The development version of this model, GENIE hN2015, is used for these comparisons. Work is ongoing [67] to incorporate the model of Oset *et al.* [13] as is used in NEUT and NuWro.
 - (ii) The PEANUT (preequilibrium approach to nuclear thermalization) model is an intranuclear cascade model implemented in FLUKA [16,68].

Similar to NEUT, it uses the model of Oset *et al.* [13] to describe the absorptive width of the optical potential for pion momenta below 300 MeV/c. π^\pm -free nucleon cross sections are used to describe elastic, quasielastic, and charge exchange interactions.

- (iii) The Bertini cascade model of Geant 4.9.4 [69] is part of the QGSP_BERT physics list. It is valid for pion momenta below 9.9 GeV/c. It also handles all other long-lived hadrons. A detailed treatment of preequilibrium and evaporation physics is included, relevant at momenta below 200 MeV where the cascade model approach begins to fail, as the de Broglie wavelength of the probe is roughly the same as the distance between nucleons in the target nucleus. The CERN-HERA compilation of hadron-nucleus elementary cross section data is used as input [70].
- (iv) The NUWRO event generator uses cascade model [12] based on the model of Oset *et al.* [13], as in NEUT. It introduces a phenomenological treatment of the formation zone (or time) effect, which can interplay with the pion absorption probability in a nontrivial momentum dependent way.
- (3) *Transport models*
 - (i) The Giessen Boltzmann-Uehling-Uhlenbeck (GiBUU) model is an implementation of a transport model for nuclear reactions [19].

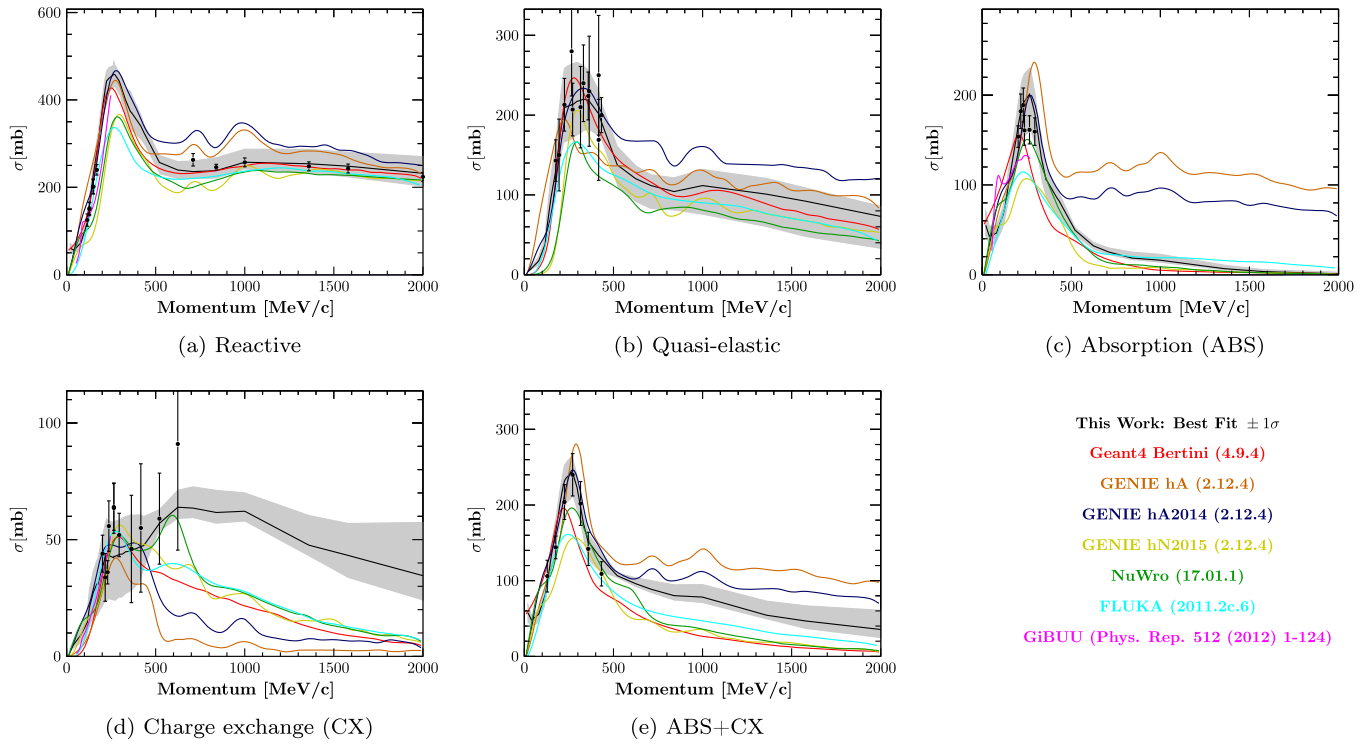


FIG. 13. Comparison of the available $\pi^+-^{12}\text{C}$ cross section external data with the NEUT best fit and its 1σ error band obtained in this work, and other models.

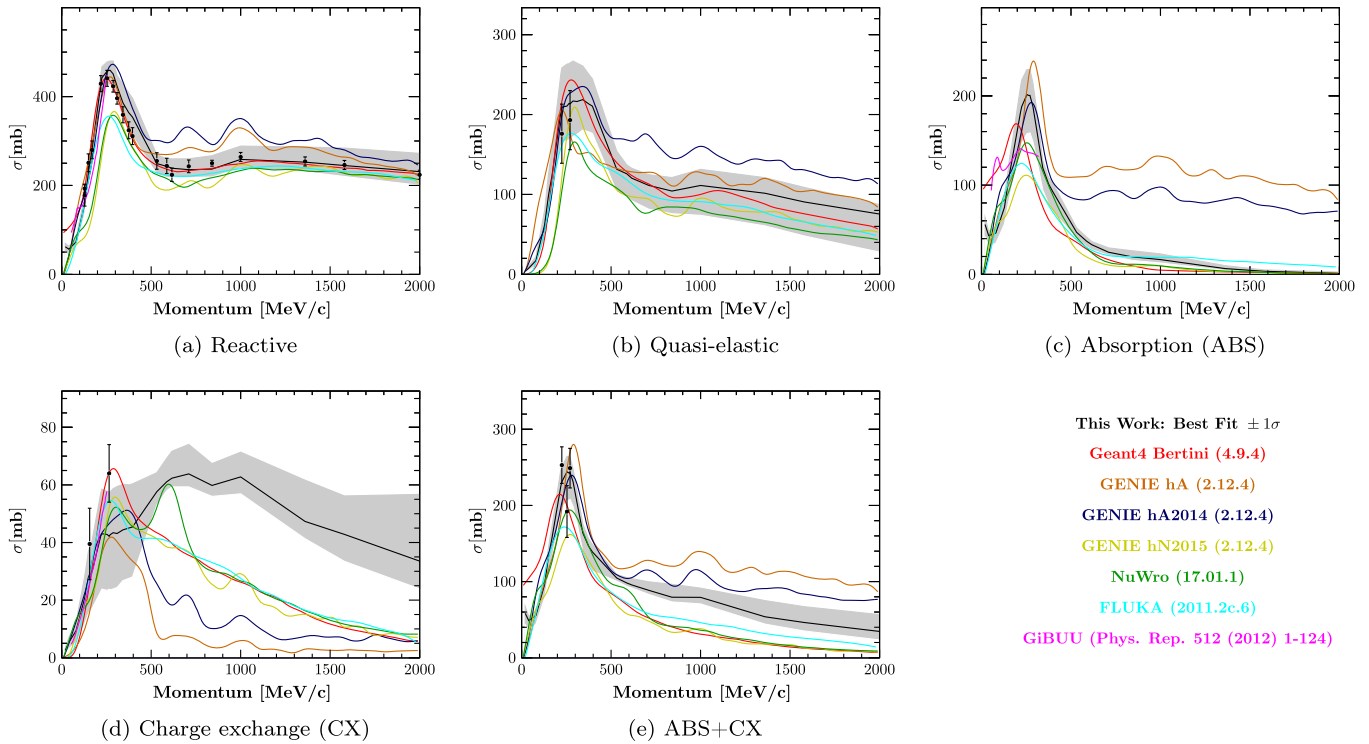


FIG. 14. Comparison of the available $\pi^- -^{12}\text{C}$ cross section external data with the NEUT best fit and its 1σ error band obtained in this work, and other models.

It describes the dynamical evolution of the interacting nuclear system through a coupled set of semiclassical kinetic equations, while taking into account the hadronic potentials and the equation of state of nuclear matter within the Boltzmann-Uehling-Uhlenbeck (BUU) theory.

Thin target particle gun simulations were used to produce microscopic cross sections for each of the models described above, and used to compare to data here, with the exception of GiBUU, where the the predictions for REAC and ABS of π^\pm - ^{12}C and ^{63}Cu were taken directly from Ref. [19]. To allow for a consistent comparison, the interaction channels were defined using only the final state particles, as described in Sec. II.

Comparisons between the tuned NEUT results obtained in Sec. V, the data used in the tuning (summarized in Table II), and the alternative models described above, are shown for carbon in Figs. 13 and 14. Similar plots for oxygen, aluminium, iron, copper, and lead are found in Appendix, including ratios of the models to data.

The NEUT prediction with scaled error bands covers $\sim 2/3$ of the available data points as intended. In the energy regions where there are data, most of the models are in reasonable agreement. However, there are noticeable differences between the models outside the data range. Most notably the NEUT model predicts a much larger cross section for the single charge exchange channel at higher momenta. Given that the agreement is recovered in the reactive channel, this is likely to be caused by differences in the tagging of hadron production events (π^\pm -A $\rightarrow \pi^+ \pi^- X$ where the π^+ is absorbed). The effective GENIE models also predict a much larger π^\pm absorption cross section at higher momenta. Additionally, most of the models fail to properly reproduce the data for the absorption cross section at low momenta for heavy nuclei (see Appendix). One possible explanation is the lack of a model for the Coulomb attraction felt by the negatively charged pion, which is included for the GiBUU model, the only model which obtains good agreement with the data in this region.

VII. SUMMARY AND OUTLOOK

The cascade model used to simulate pion interactions in NEUT has been tuned to a variety of available data on several nuclear targets, and uncertainties have been produced. These have recently been used in analyses by the T2K and Super-Kamiokande Collaborations, for whom NEUT is the primary neutrino simulation software. The uncertainties produced in this work are reduced with respect to previous attempts to constrain the pion interaction parameters [10,20] by $\sim 50\%$, which should correspond to a similar reduction in the FSI and SI uncertainties, currently a large uncertainty in the T2K oscillation analysis [10,71]. Additionally, the methods developed can be applied for tuning other similar cascade simulation packages.

One of the additions to this fit over previous attempts is the new DUET data [26,72]. DUET made measurements

specifically targeted at T2K's needs and provided more information than available from most historical measurements from the 1950s to the 1990s. To reduce the uncertainties further for future experiments more modern data are needed. Fortunately, there are dedicated experiments [73,74] in charged particle test beams aiming to make such measurements on argon to fulfill this need for the future DUNE oscillation program [75].

One limitation of this work is neglecting the measured pion kinematic distributions, for which only very limited data are available [33,76]. NEUT comparisons to these distributions can be found in Ref. [20]. Although this would require significant development of the NEUT cascade model, having such data from new π^\pm -A scattering experiments would provide a stringent constraint on models in the future.

ACKNOWLEDGMENTS

The authors thank the members of the T2K Collaboration and the authors of the NEUT generator for their help and support. We acknowledge the support of MEXT, Japan; NSERC (Grant No. SAPPJ-2014-00031), NRC and CFI, Canada; CEA and CNRS/IN2P3, France; SNSF and SERI, Switzerland; STFC, UK; and DOE, USA. In addition, participation of individual researchers and institutions has been further supported by funds from the Ontario Graduate Scholarship, the Queen Elizabeth II Graduate Scholarship in Science & Technology, the Japan Society for the Promotion of Science (JSPS) Postdoctoral Fellowship for Research in Japan, the H2020 Grant No. RISE-GA644294-JENNIFER, the Alfred P. Sloan Foundation, and the DOE Early Career program, USA. Computations were performed on the General Purpose Cluster supercomputer at the SciNet High Performance Computing Consortium [77]. SciNet is funded by the Canada Foundation for Innovation under the auspices of Compute Canada; the Government of Ontario; Ontario Research Fund—Research Excellence; and the University of Toronto.

APPENDIX: ADDITIONAL MODEL COMPARISONS

In Sec. VI, a comparison of the tuned NEUT results obtained in Sec. V, the data used in the fits described in this work (summarized in Table II) and a variety of alternative intranuclear rescattering models were compared for π^\pm -carbon scattering (see Figs. 13 and 14). Here, similar plots are presented for oxygen—Figs. 15 and 16; aluminum—Figs. 17 and 18; iron—Figs. 19 and 20; copper—Figs. 21 and 22; and lead—Figs. 23 and 24.

In addition, ratios of those plots with respect to the best fit NEUT predictions obtained in this work are presented for reference for π^+ - ^{12}C , ^{16}O , ^{27}Al (π^- - ^{12}C , ^{16}O , ^{27}Al) scattering in Fig. 25 (Fig. 26), and for π^+ - ^{56}Fe , ^{63}Cu , ^{207}Pb (π^- - ^{56}Fe , ^{63}Cu , ^{207}Pb) scattering in Fig. 27 (Fig. 28).

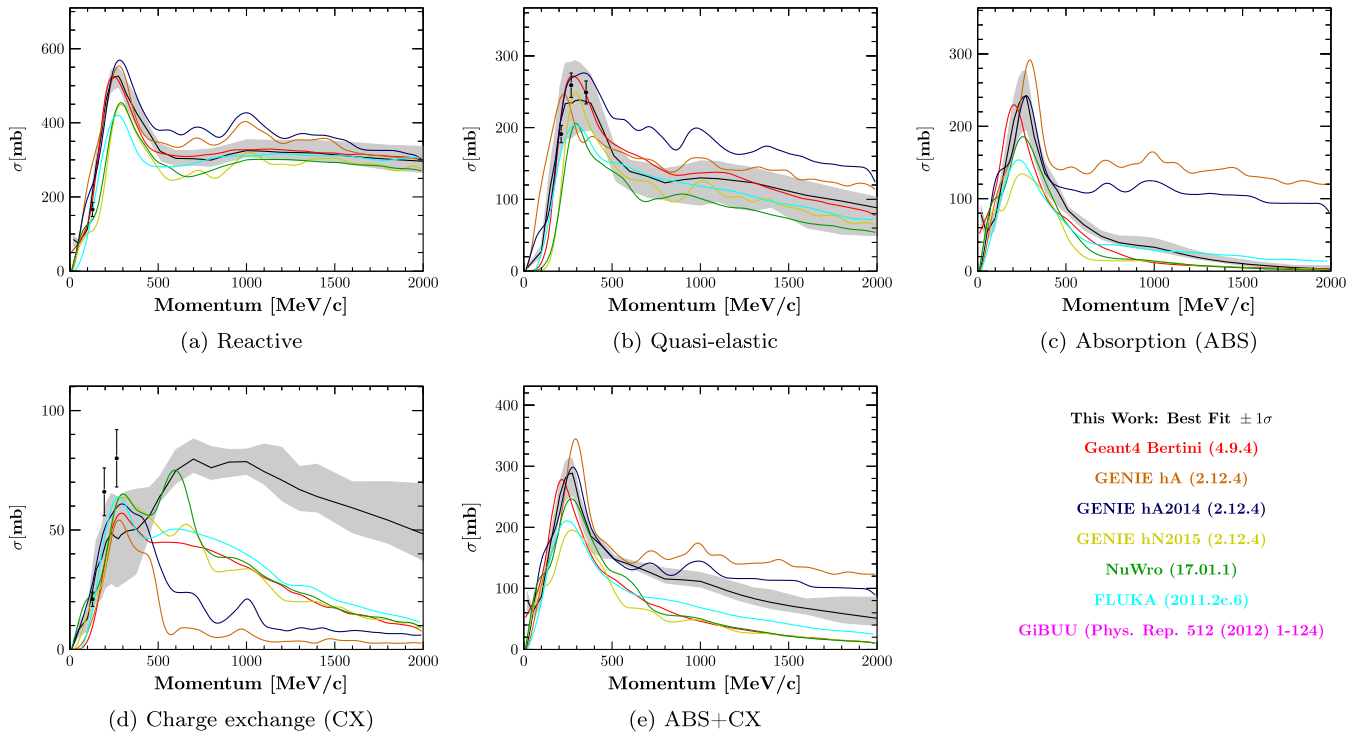


FIG. 15. Comparison of the available $\pi^+-^{16}\text{O}$ cross section external data with the NEUT best fit and its 1σ error band obtained in this work, and other models.

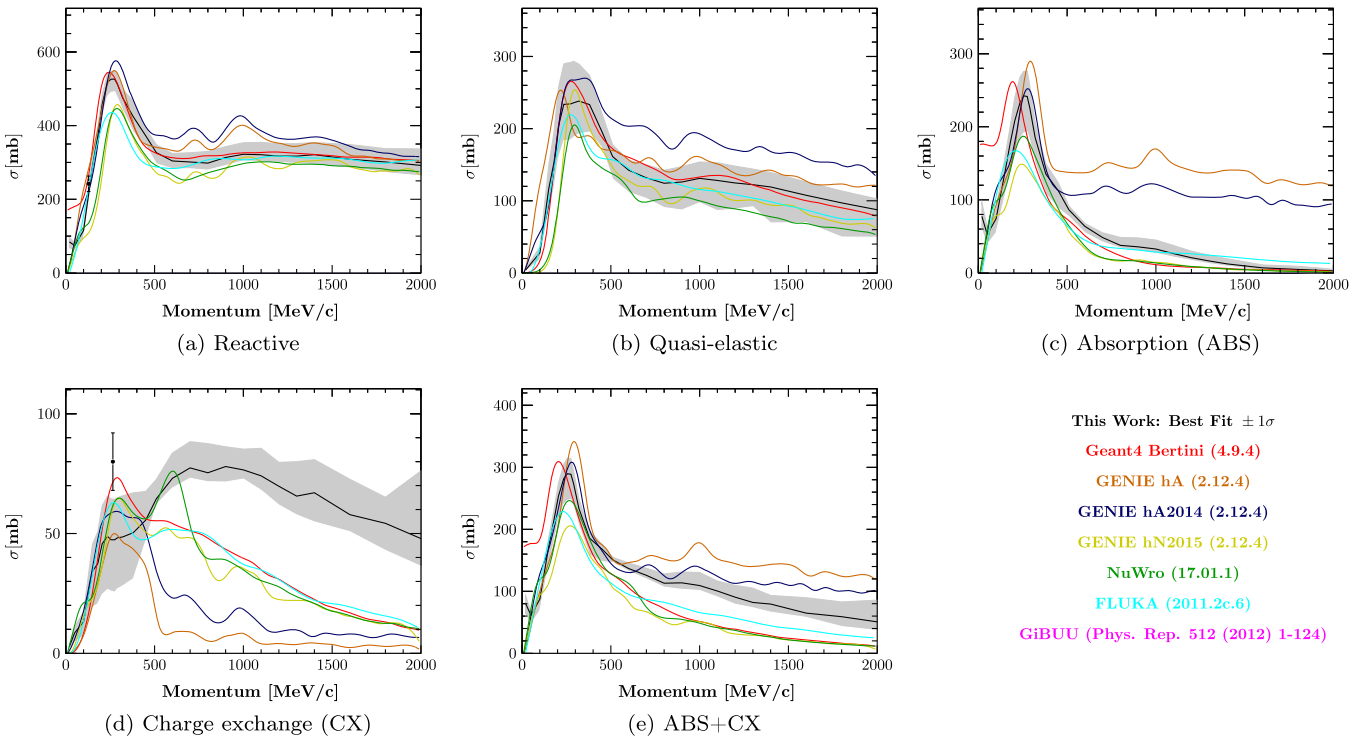


FIG. 16. Comparison of the available $\pi^+-^{16}\text{O}$ cross section external data with the NEUT best fit and its 1σ error band obtained in this work, and other models.

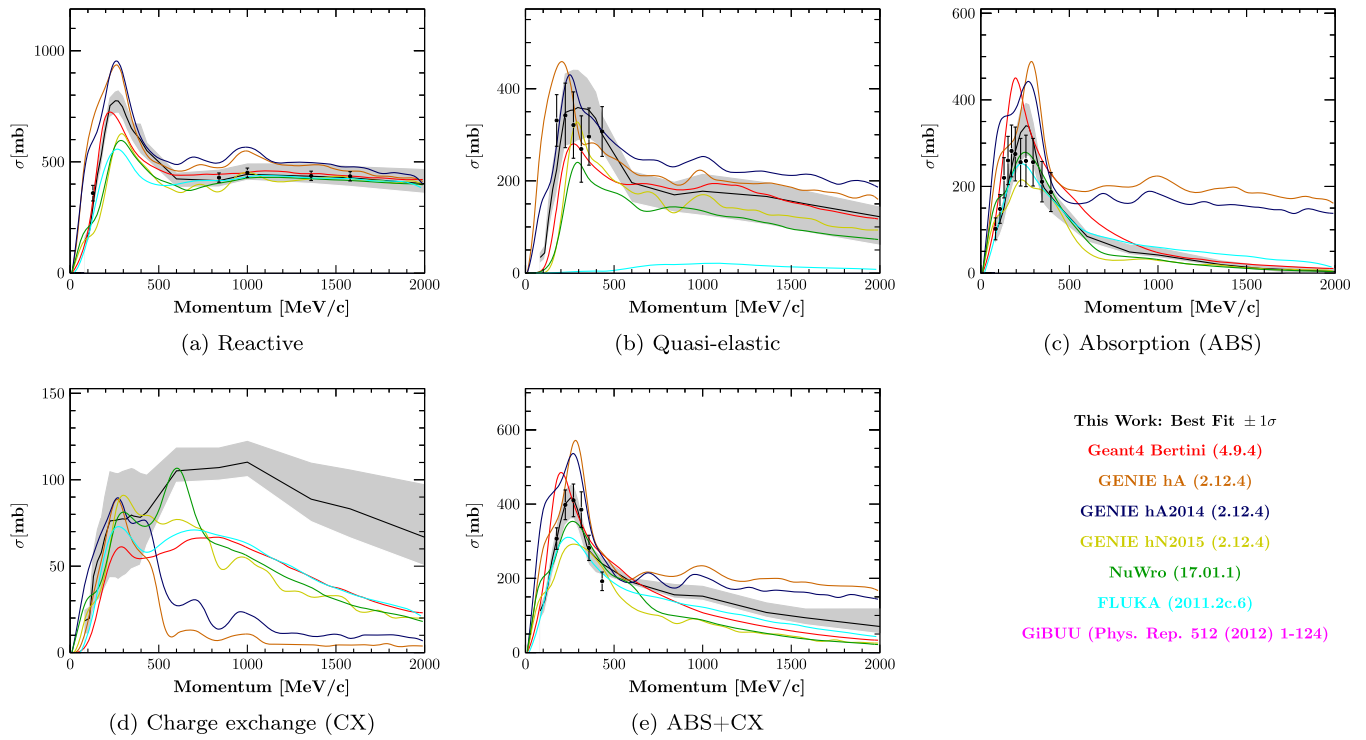


FIG. 17. Comparison of the available $\pi^+ - {}^{27}\text{Al}$ cross section external data with the NEUT best fit and its 1σ error band obtained in this work, and other models.

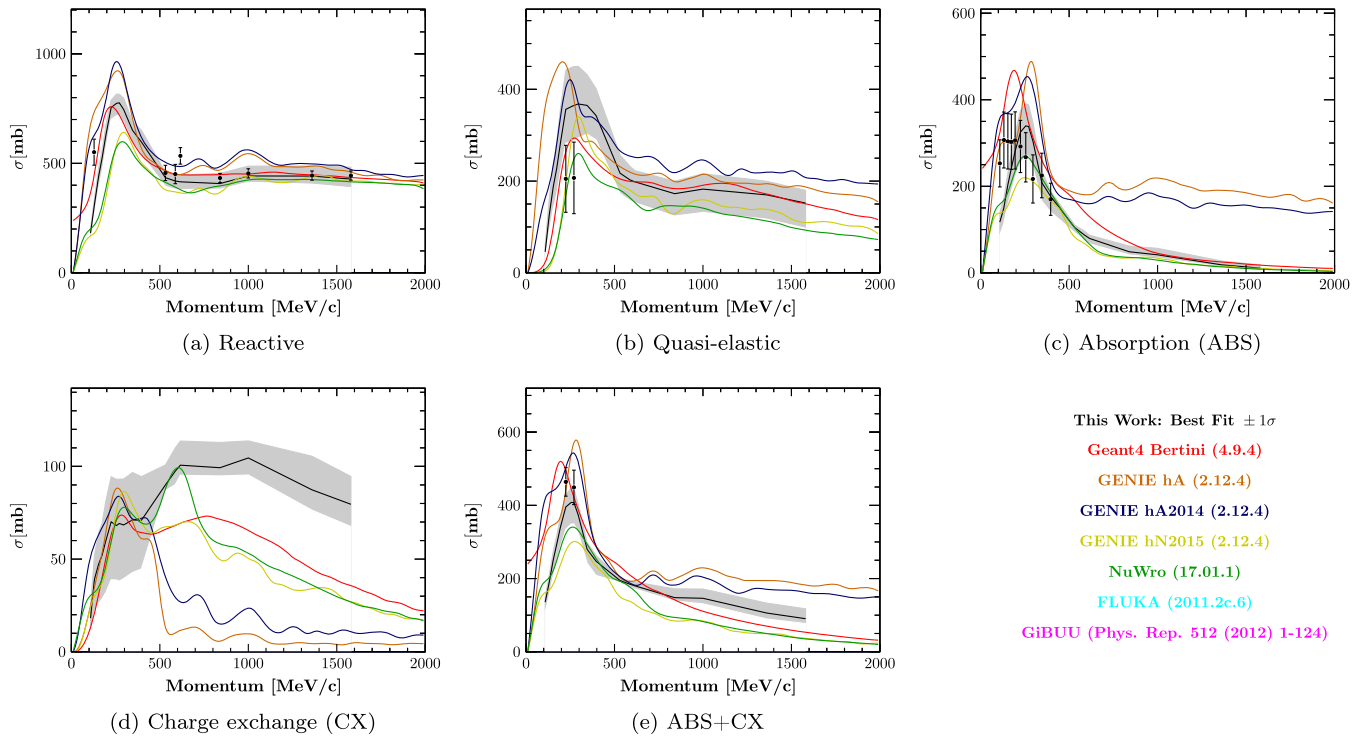


FIG. 18. Comparison of the available $\pi^- - {}^{27}\text{Al}$ cross section external data with the NEUT best fit and its 1σ error band obtained in this work, and other models.

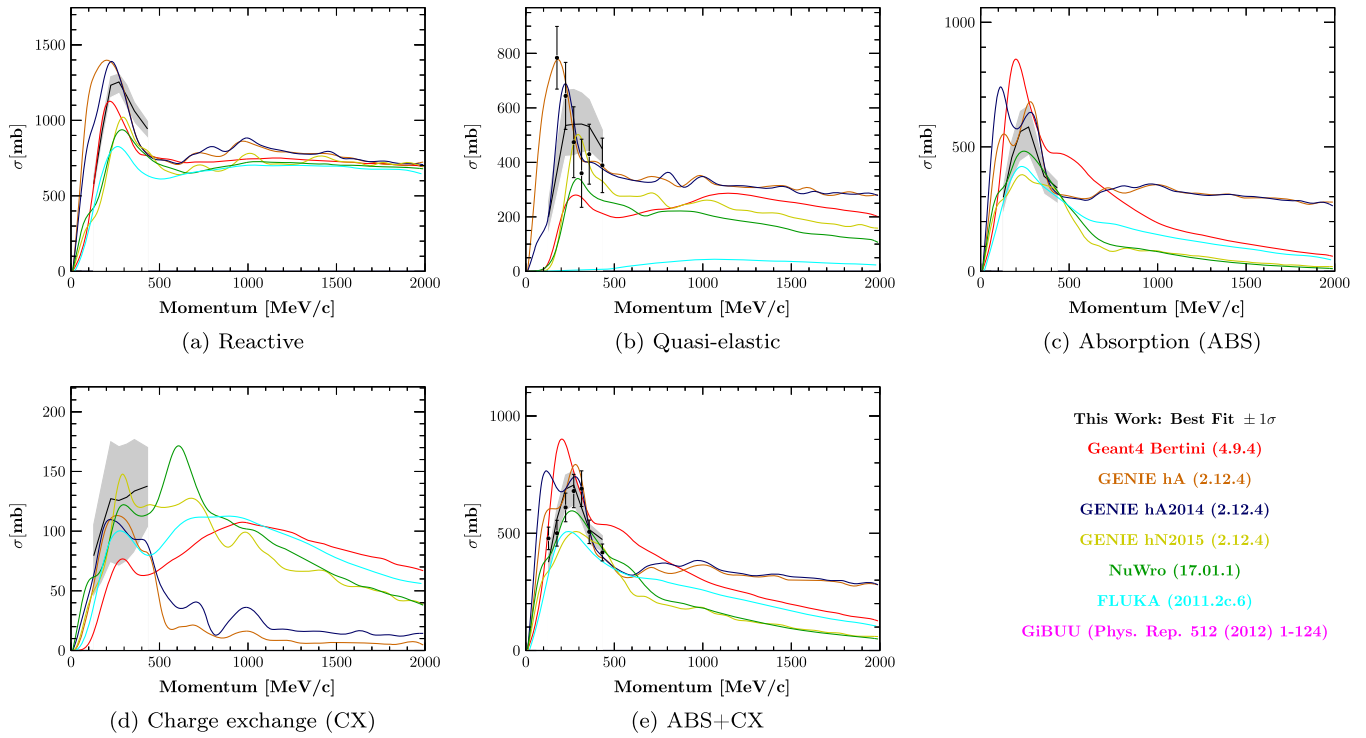


FIG. 19. Comparison of the available $\pi^+ - {}^{56}\text{Fe}$ cross section external data with the NEUT best fit and its 1σ error band obtained in this work, and other models.

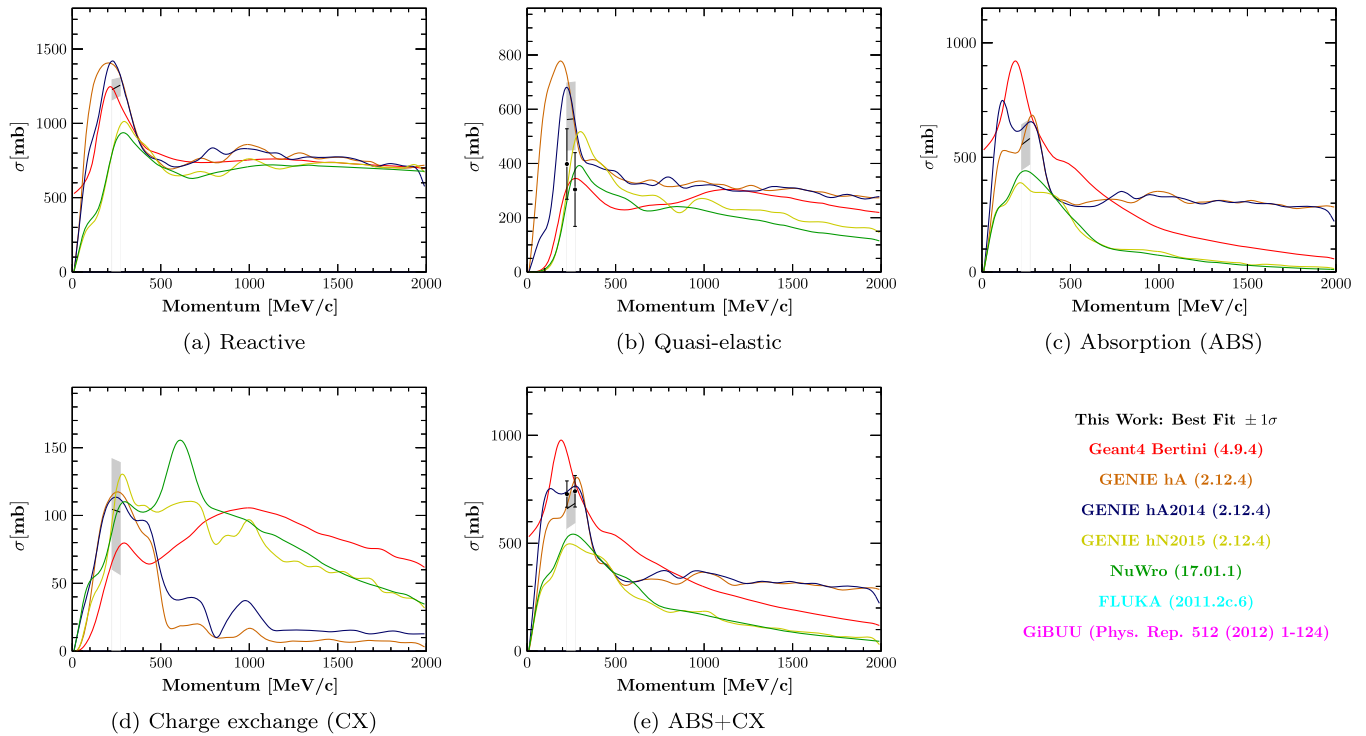


FIG. 20. Comparison of the available $\pi^- - {}^{56}\text{Fe}$ cross section external data with the NEUT best fit and its 1σ error band obtained in this work, and other models.

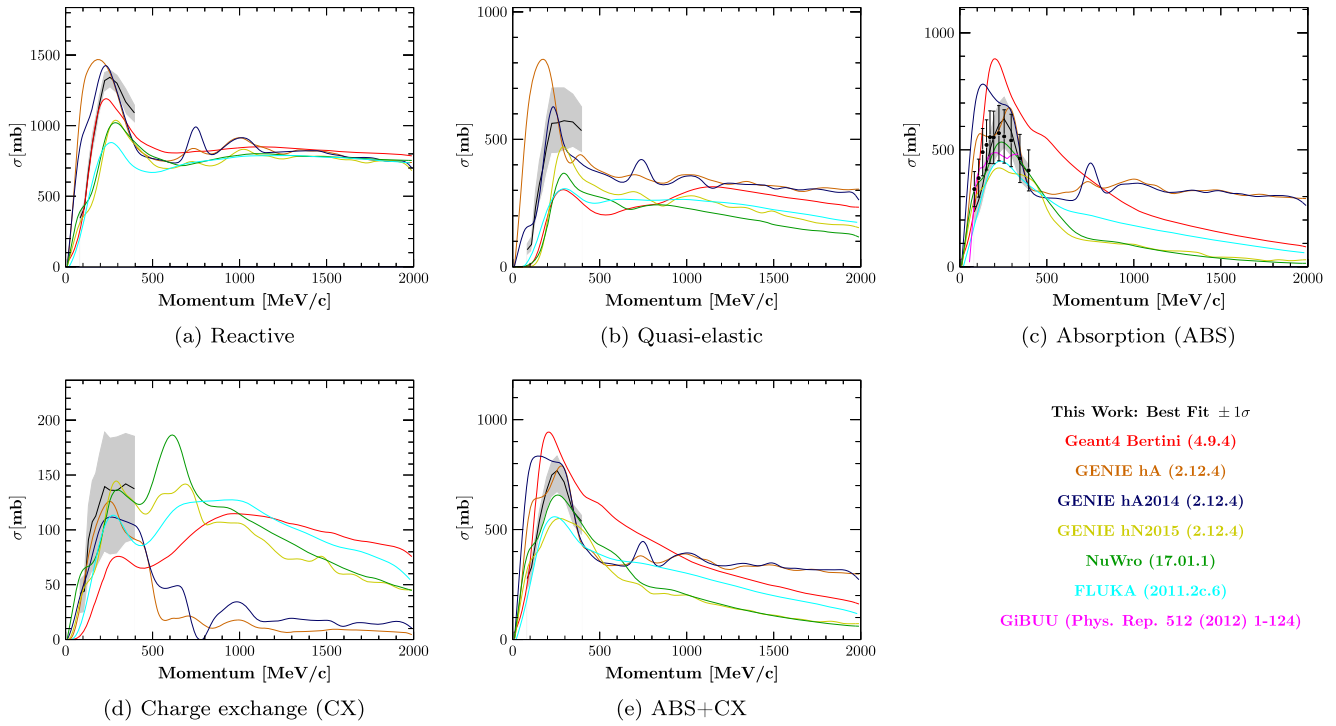


FIG. 21. Comparison of the available $\pi^+ - {}^{63}\text{Cu}$ cross section external data with the NEUT best fit and its 1σ error band obtained in this work, and other models.

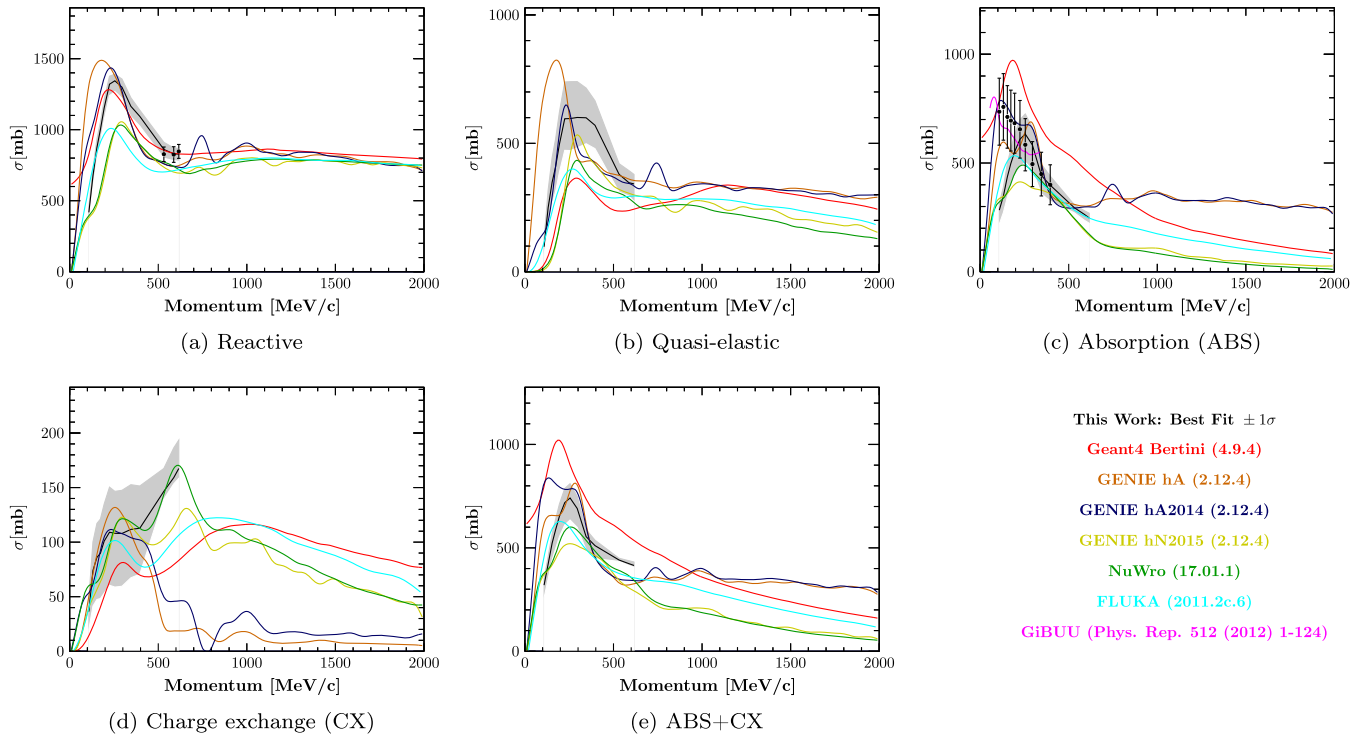


FIG. 22. Comparison of the available $\pi^- - {}^{63}\text{Cu}$ cross section external data with the NEUT best fit and its 1σ error band obtained in this work, and other models.

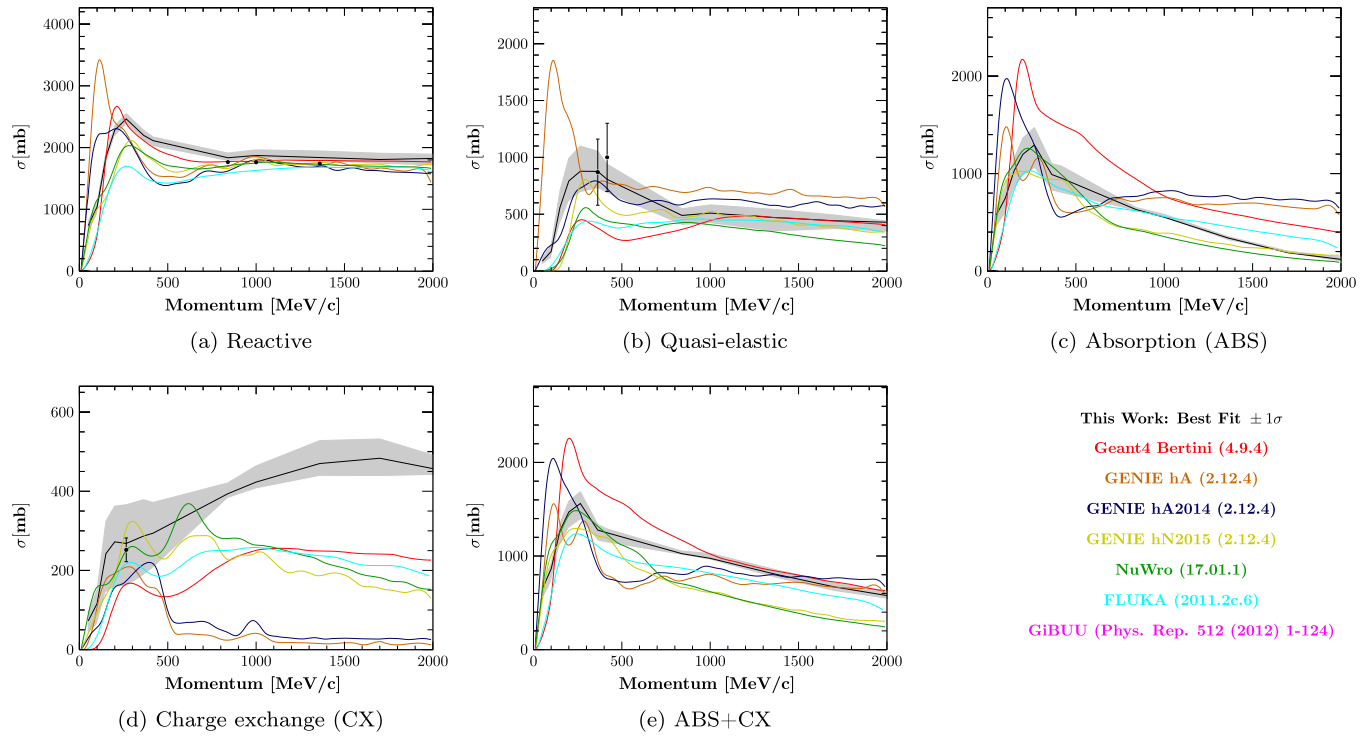


FIG. 23. Comparison of the available $\pi^+ -^{207}\text{Pb}$ cross section external data with the NEUT best fit and its 1σ error band obtained in this work, and other models.

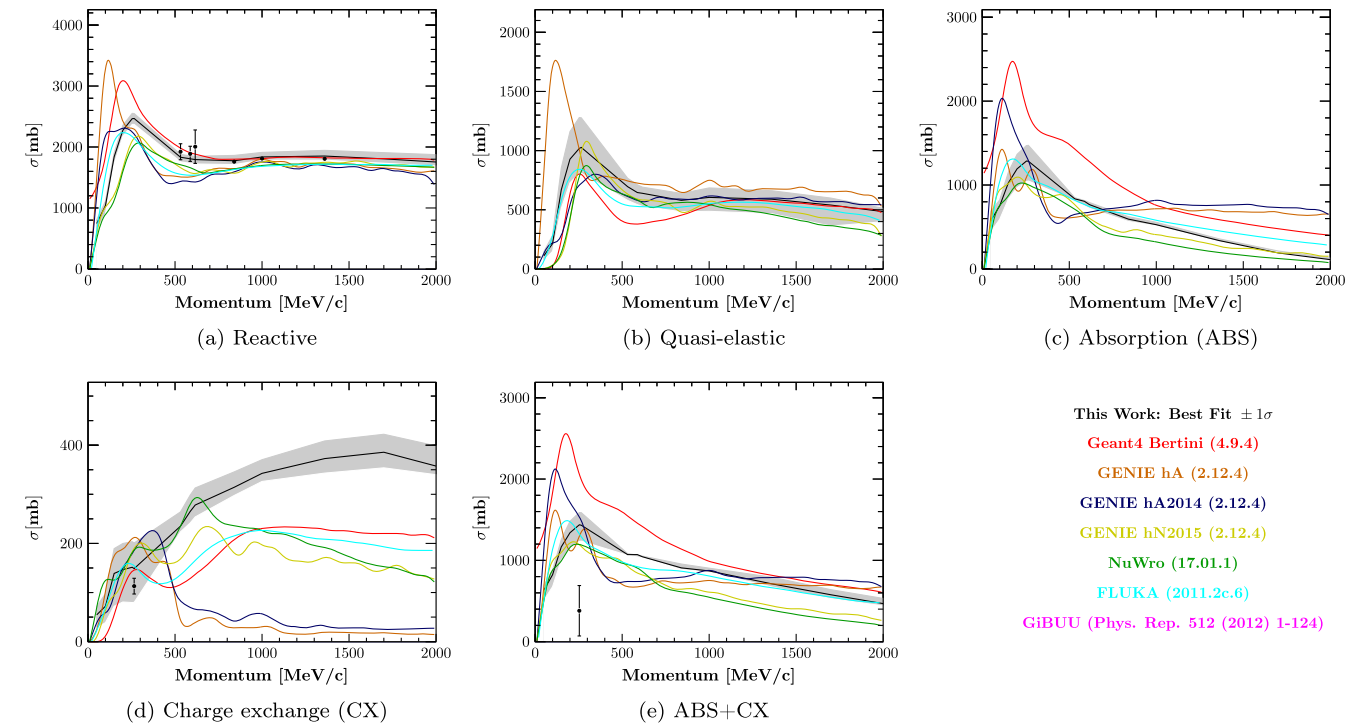


FIG. 24. Comparison of the available $\pi^- -^{207}\text{Pb}$ cross section external data with the NEUT best fit and its 1σ error band obtained in this work, and other models.

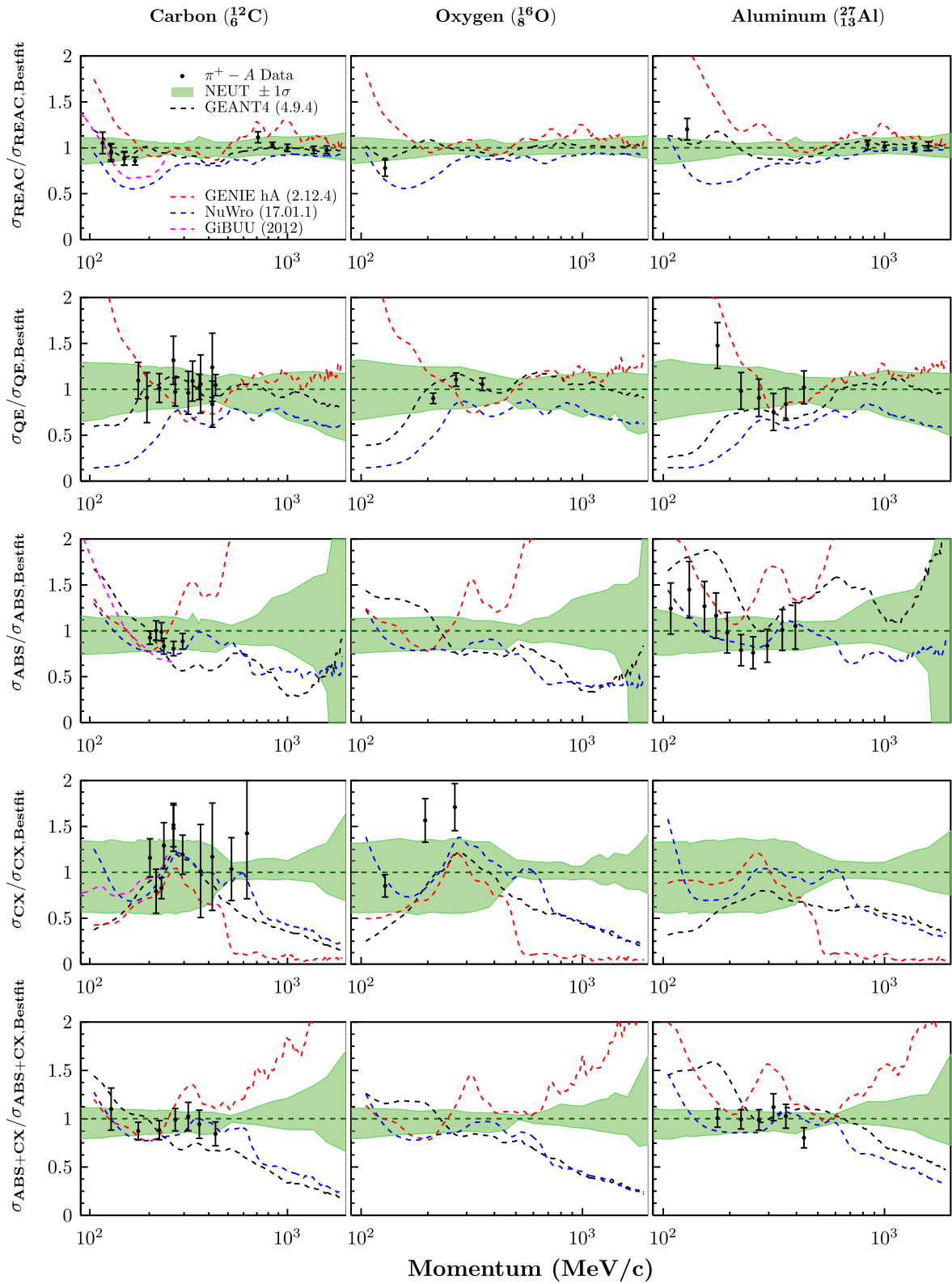


FIG. 25. Ratios of the π^+ - ^{12}C , ^{16}O , ^{27}Al data and the GEANT4 (black), GENIE (red), NuWro (blue), and GiBUU (magenta) predictions to the NEUT best fit for the five interaction channels used in the fit. The green band represents the $\pm 1\sigma$ band.

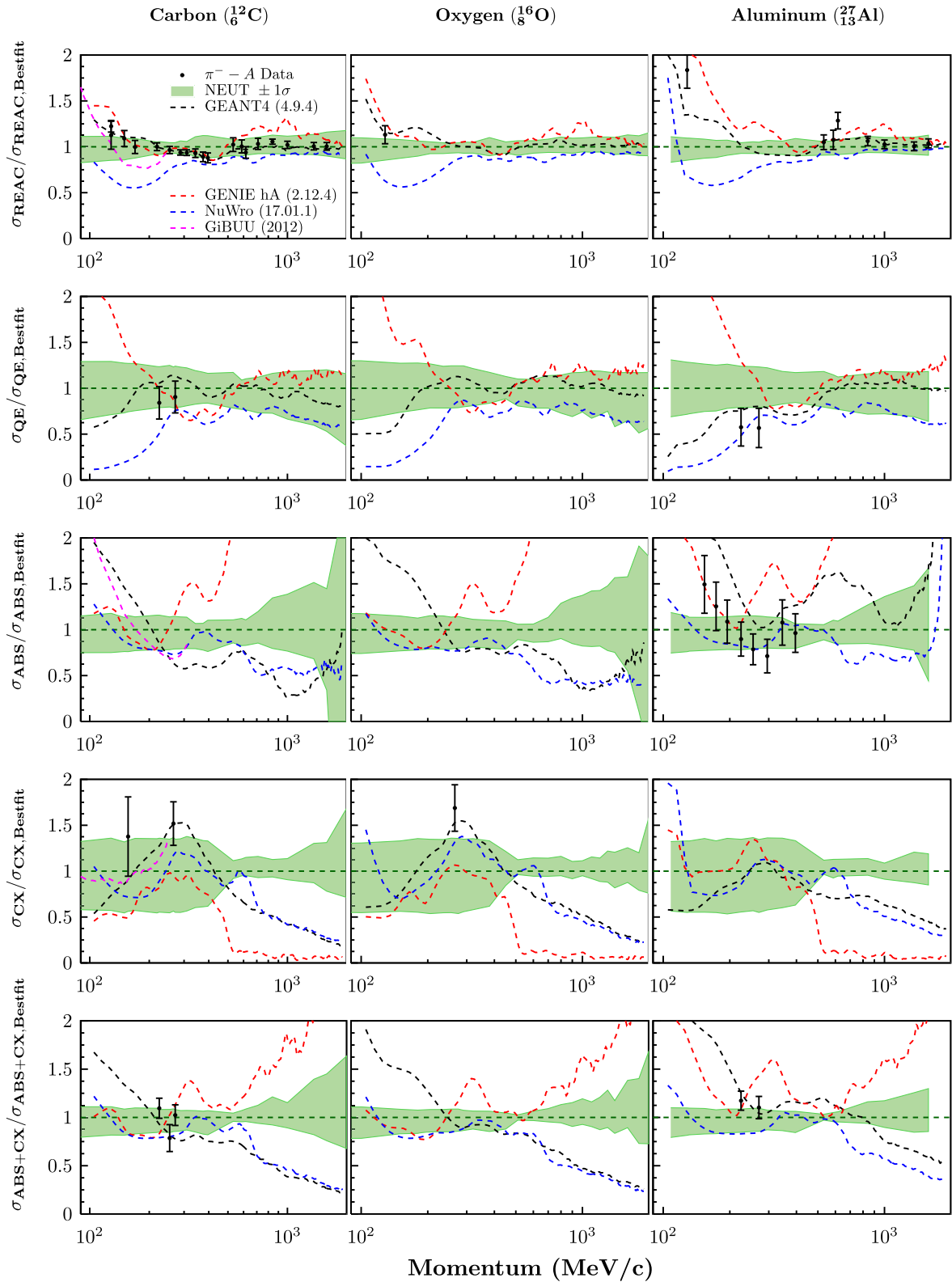


FIG. 26. Ratios of the π^- - ^{12}C , ^{16}O , ^{27}Al data and the GEANT4 (black), GENIE (red), NuWro (blue), and GiBUU (magenta) predictions to the NEUT best fit. The green band represents the $\pm 1\sigma$ band.

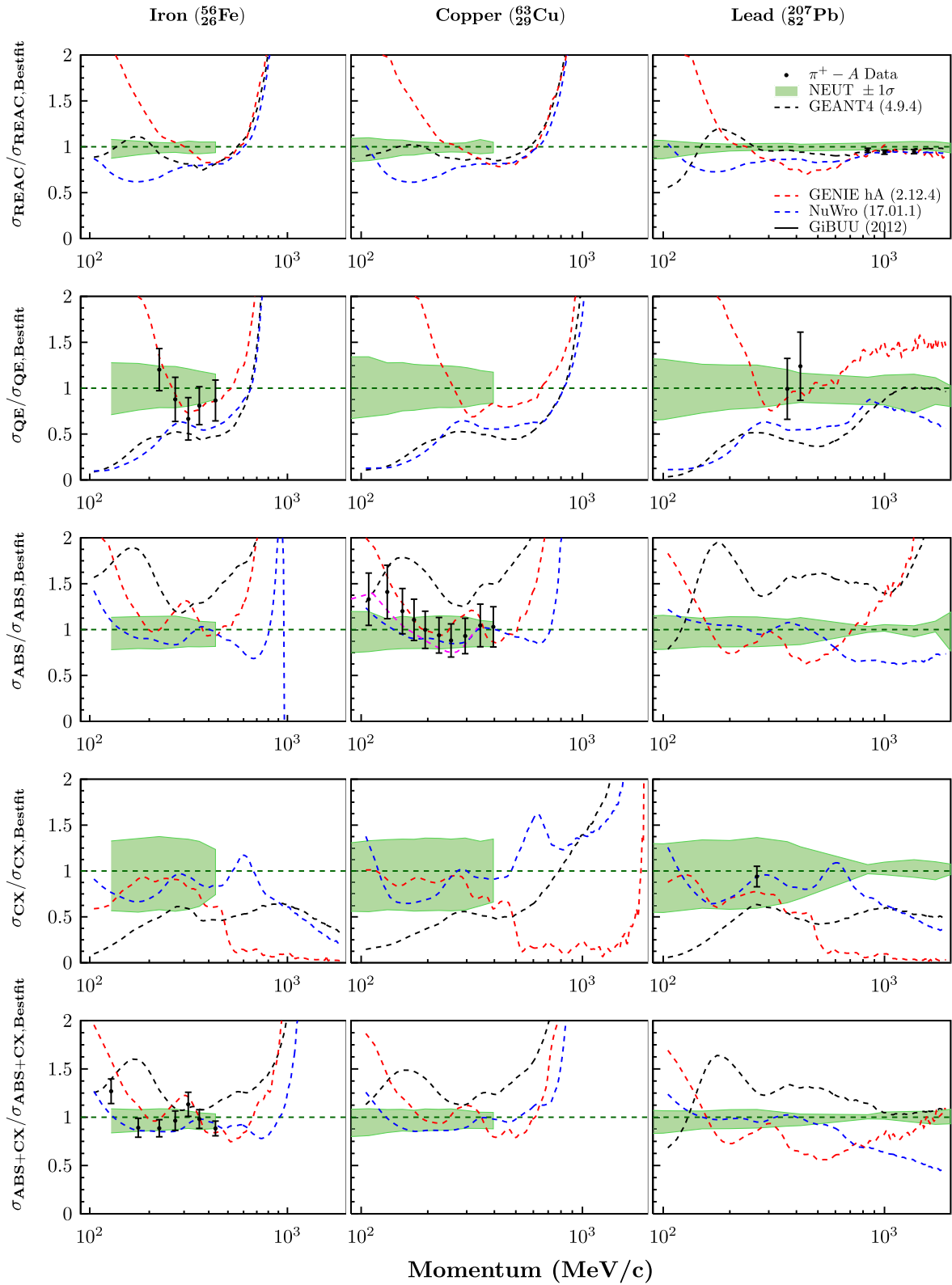


FIG. 27. Ratios of the π^+ - ^{56}Fe , ^{63}Cu , ^{207}Pb data and the GEANT4 (black), GENIE (red), NuWro (blue), and GiBUU (magenta) predictions to the NEUT best fit. The green band represents the $\pm 1\sigma$ band.

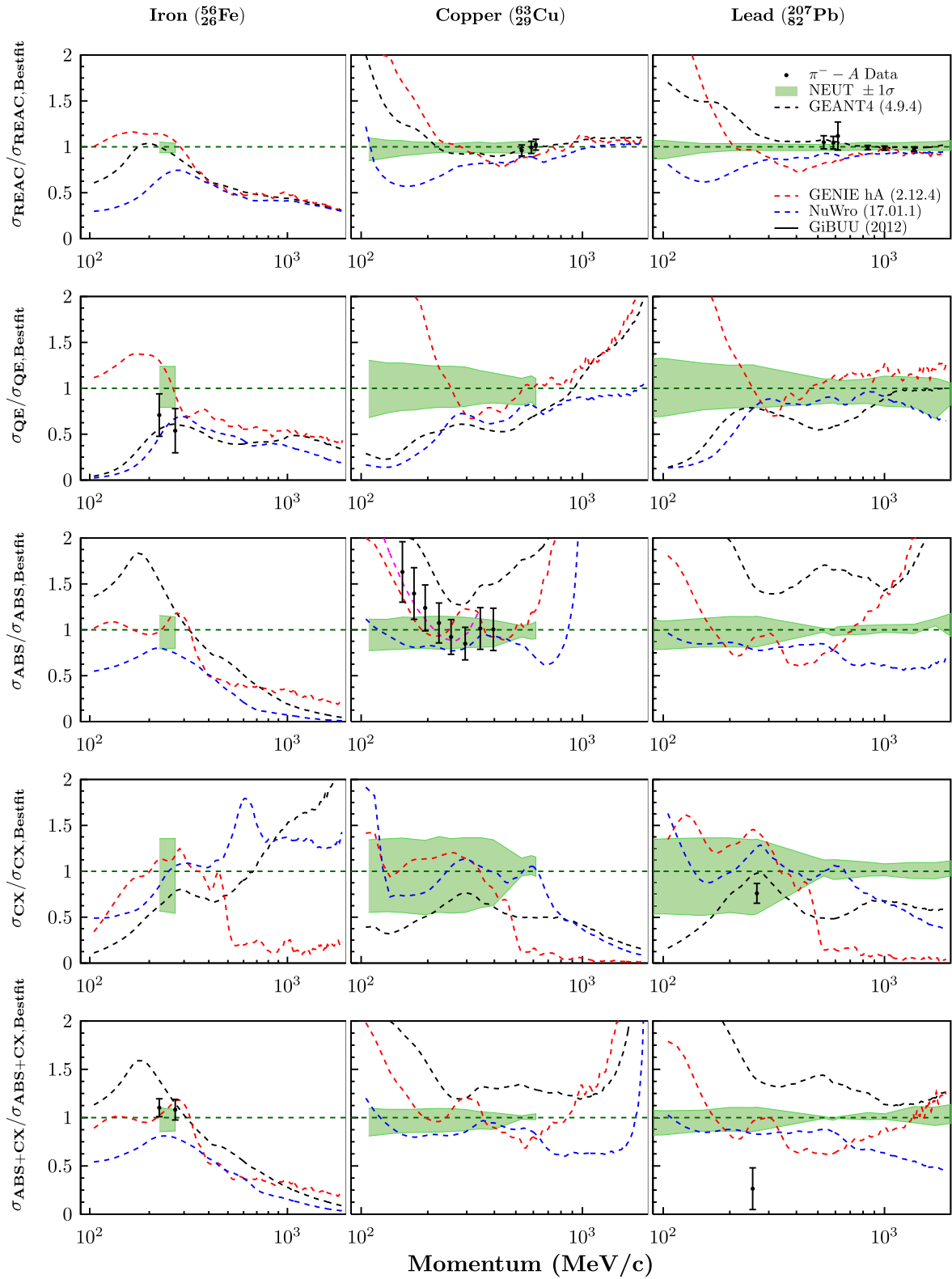


FIG. 28. Ratios of the π^- - ^{56}Fe , ^{63}Cu , ^{207}Pb data and the GEANT4 (black), GENIE (red), NuWro (blue), and GiBUU (magenta) predictions to the NEUT best fit. The green band represents the $\pm 1\sigma$ band.

- [1] L. Alvarez-Ruso, Y. Hayato, and J. Nieves, *New J. Phys.* **16**, 075015 (2014).
- [2] G. T. Garvey, D. A. Harris, H. A. Tanaka, R. Tayloe, and G. P. Zeller, *Phys. Rep.* **580**, 1 (2015).
- [3] U. Mosel, *Annu. Rev. Nucl. Part. Sci.* **66**, 171 (2016).
- [4] T. Katori and M. Martini, *J. Phys. G* **45**, 013001 (2018).
- [5] L. Alvarez-Ruso *et al.*, *Prog. Part. Nucl. Phys.* **100**, 1 (2018).
- [6] K. Mahn, C. Marshall, and C. Wilkinson, *Annu. Rev. Nucl. Part. Sci.* **68**, 105 (2018).
- [7] M. Betancourt *et al.*, *Phys. Rep.* **773–774**, 1 (2018).
- [8] K. Abe *et al.* (T2K Collaboration), *Nucl. Instrum. Methods Phys. Res., Sect. A* **659**, 106 (2011).
- [9] Hyper-Kamiokande Design Report, Technical Reports No. KEK-PREPRINT-2016-21 and No. ICRR-REPORT-701-2016-1, 2016.
- [10] K. Abe *et al.* (T2K Collaboration), *Phys. Rev. D* **91**, 072010 (2015).
- [11] S. Dytman, *Acta Phys. Pol. B* **40**, 2445 (2009).
- [12] T. Golan, C. Juszczak, and J. T. Sobczyk, *Phys. Rev. C* **86**, 015505 (2012).
- [13] L. L. Salcedo, E. Oset, M. J. Vicente-Vacas, and C. Garcia-Recio, *Nucl. Phys. A* **484**, 557 (1988).
- [14] E. Oset and L. L. Salcedo, *Nucl. Phys. A* **468**, 631 (1987).
- [15] Y. Hayato, *Acta Phys. Pol. B* **40**, 2477 (2009).
- [16] T. T. Böhlen, F. Cerutti, M. P. W. Chin, A. Fassò, A. Ferrari, P. G. Ortega, A. Mairani, P. R. Sala, G. Smirnov, and V. Vlachoudis, *Nucl. Data Sheets* **120**, 211 (2014).
- [17] M. Asai, *Trans. Am. Nucl. Soc.* **95**, 757 (2006).
- [18] C. Andreopoulos *et al.* (GENIE Collaboration), [arXiv: 1510.05494](https://arxiv.org/abs/1510.05494).
- [19] O. Buss, T. Gaitanos, K. Gallmeister, H. van Hees, M. Kaskulov, O. Lalakulich, A. B. Larionov, T. Leitner, J. Weil, and U. Mosel, *Phys. Rep.* **512**, 1 (2012).
- [20] P. de Perio, Joint Three-Flavour Oscillation Analysis of ν_μ Disappearance and ν_e Appearance in the T2K Neutrino Beam, Ph.D. thesis, University of Toronto, 2014.
- [21] K. Abe *et al.* (T2K Collaboration), *Phys. Rev. Lett.* **121**, 171802 (2018).
- [22] C. W. De Jager, H. De Vries, and C. De Vries, *At. Data Nucl. Data Tables* **14**, 479 (1974).
- [23] P. D. Group, *J. Phys. G* **37**, 075021 (2010).
- [24] K. Abe *et al.* (T2K Collaboration), *Nucl. Instrum. Methods Phys. Res., Sect. A* **659**, 106 (2011).
- [25] K. Abe *et al.*, *Nucl. Instrum. Methods Phys. Res., Sect. A* **694**, 211 (2012).
- [26] E. S. Pinzon Guerra *et al.* (DUET Collaboration), *Phys. Rev. C* **95**, 045203 (2017).
- [27] B. W. Allardyce *et al.*, *Nucl. Phys. A* **209**, 1 (1973).
- [28] A. Saunders, S. Høibråten, J. J. Kraushaar, B. J. Kriss, R. J. Peterson, R. A. Ristinen, J. T. Brack, G. Hofman, E. F. Gibson, and C. L. Morris, *Phys. Rev. C* **53**, 1745 (1996).
- [29] C. J. Gelderloos, J. T. Brack, M. D. Holcomb, M. V. Keilman, D. J. Mercer, R. J. Peterson, R. A. Ristinen, and A. Saunders, *Phys. Rev. C* **62**, 024612 (2000).
- [30] F. Binon, P. Duteil, J. P. Garron, J. Gorres, L. Hugon, J. P. Peigneux, C. Schmit, M. Spighel, and J. P. Stroot, *Nucl. Phys. B* **17**, 168 (1970).
- [31] O. Meirav, E. Friedman, R. R. Johnson, R. Olszewski, and P. Weber, *Phys. Rev. C* **40**, 843 (1989).
- [32] C. H. Q. Ingram, P. A. M. Gram, J. Jansen, R. E. Mischke, J. Zichy, J. Bolger, E. T. Boschitz, G. Pröbstle, and J. Arvieux, *Phys. Rev. C* **27**, 1578 (1983).
- [33] S. M. Levenson *et al.*, *Phys. Rev. C* **28**, 326 (1983).
- [34] M. K. Jones *et al.*, *Phys. Rev. C* **48**, 2800 (1993).
- [35] D. Ashery, I. Navon, G. Azuelos, H. K. Walter, H. J. Pfeiffer, and F. W. Schlepütz, *Phys. Rev. C* **23**, 2173 (1981).
- [36] H. Hilscher, W.-D. Krebs, G. Sepp, and V. Soergel, *Nucl. Phys. A* **158**, 602 (1970).
- [37] T. J. Bowles *et al.*, *Phys. Rev. C* **23**, 439 (1981).
- [38] D. Ashery *et al.*, *Phys. Rev. C* **30**, 946 (1984).
- [39] K. Nakai, T. Kobayashi, T. Numao, T. A. Shibata, J. Chiba, and K. Masutani, *Phys. Rev. Lett.* **44**, 1446 (1980).
- [40] E. Bellotti, D. Cavalli, and C. Matteuzzi, *Il Nuovo Cimento A* **18**, 75 (1973).
- [41] E. Bellotti, S. Bonetti, D. Cavalli, and C. Matteuzzi, *Il Nuovo Cimento A* **14**, 567 (1973).
- [42] I. Navon, D. Ashery, J. Alster, G. Azuelos, B. M. Barnett, W. Gyles, R. R. Johnson, D. R. Gill, and T. G. Masterson, *Phys. Rev. C* **28**, 2548 (1983).
- [43] R. H. Miller, *Il Nuovo Cimento* **6**, 882 (1957).
- [44] N. Grion *et al.*, *Nucl. Phys. A* **492**, 509 (1989).
- [45] A. Rahav *et al.*, *Phys. Rev. Lett.* **66**, 1279 (1991).
- [46] S. A. Wood, J. L. Matthews, E. R. Kinney, P. A. M. Gram, G. A. Rebka, and D. A. Roberts, *Phys. Rev. C* **46**, 1903 (1992).
- [47] J. W. Cronin, R. Cool, and A. Abashian, *Phys. Rev.* **107**, 1121 (1957).
- [48] D. Rowntree *et al.*, *Phys. Rev. C* **60**, 054610 (1999).
- [49] R. A. Giannelli *et al.*, *Phys. Rev. C* **61**, 054615 (2000).
- [50] R. D. Ransome *et al.*, *Phys. Rev. C* **45**, R509 (1992).
- [51] C. Wilkin, C. R. Cox, J. J. Domingo, K. Gabathuler, E. Pedroni, J. Rohlin, P. Schwaller, and N. W. Tanner, *Nucl. Phys. B* **62**, 61 (1973).
- [52] A. S. Clough *et al.*, *Nucl. Phys. B* **76**, 15 (1974).
- [53] T. Takahashi *et al.*, *Phys. Rev. C* **51**, 2542 (1995).
- [54] A. S. Carroll, I. H. Chiang, C. B. Dover, T. F. Kycia, K. K. Li, P. O. Mazur, D. N. Michael, P. M. Mockett, D. C. Rahm, and R. Rubinstein, *Phys. Rev. C* **14**, 635 (1976).
- [55] K. Aoki *et al.*, *Phys. Rev. C* **76**, 024610 (2007).
- [56] M. Crozon, Ph. Chavanon, A. Courau, Th. Leray, J. L. Narjoux, and J. Tocqueville, *Nucl. Phys.* **64**, 567 (1965).
- [57] F. James and M. Roos, *Comput. Phys. Commun.* **10**, 343 (1975).
- [58] TMultiDimFit—ROOT (2017), <https://root.cern.ch/doc/master/classTMultiDimFit.html>.
- [59] R. Brun and F. Rademakers, *Nucl. Instrum. Methods Phys. Res., Sect. A* **389**, 81 (1997).
- [60] GNU-Octave n-dim interpolation, <https://www.gnu.org/software/octave/doc/>.
- [61] C. Wilkinson *et al.*, *Phys. Rev. D* **93**, 072010 (2016).
- [62] J. Pumplin, D. Stump, and W. Tung, *Phys. Rev. D* **65**, 014011 (2001).
- [63] E. S. Pinzon Guerra, Measurement of Pion-Carbon Cross Sections at DUET and Measurement of Neutrino Oscillation Parameters at the T2K experiment, Ph.D. thesis, York University, 2017.
- [64] L. Aliaga *et al.* (MINERvA Collaboration), *Nucl. Instrum. Methods Phys. Res., Sect. A* **743**, 130 (2014).

- [65] A. Aurisano, C. Backhouse, R. Hatcher, N. Mayer, J. Musser, R. Patterson, R. Schroeter, and A. Sousa, *J. Phys. Conf. Ser.* **664**, 072002 (2015).
- [66] C. Andreopoulos *et al.* (GENIE Collaboration), [arXiv:1512.06882](https://arxiv.org/abs/1512.06882).
- [67] G. Perdue and S. Dytman, GENIE FSI overview, Modeling neutrino-nucleus interactions, European Centre of Theoretical Nuclear Physics, Trento, Italy, 2018.
- [68] A. Ferrari, P.R. Sala, A. Fassò, and J. Ranft, *FLUKA: A Multi-Particle Transport Code* (CERN, Geneva, 2005).
- [69] D. Wright and M. Kelsey, *Nucl. Instrum. Methods Phys. Res., Sect. A* **804**, 175 (2015).
- [70] V. Flaminio, W. Moorhead, D. Morrison, and N. Rivoire, *CERN-HERA* **83**, 01 (1983).
- [71] K. Abe *et al.* (T2K Collaboration), *Phys. Rev. D* **96**, 092006 (2017).
- [72] K. Ieki *et al.* (DUET Collaboration), *Phys. Rev. C* **92**, 035205 (2015).
- [73] F. Cavanna, M. Kordosky, J. Raaf, and B. Rebel (LArIAT Collaboration), [arXiv:1406.5560](https://arxiv.org/abs/1406.5560).
- [74] B. Abi *et al.* (DUNE Collaboration), [arXiv:1706.07081](https://arxiv.org/abs/1706.07081).
- [75] R. Acciarri *et al.* (DUNE Collaboration), [arXiv:1512.06148](https://arxiv.org/abs/1512.06148).
- [76] Y. Fujii *et al.*, *Phys. Rev. C* **64**, 034608 (2001).
- [77] C. Loken, D. Gruner, L. Groer, R. Peltier, N. Bunn, M. Craig, T. Henriques, J. Dempsey, C.-H. Yu, J. Chen, L. J. Dursi, J. Chong, S. Northrup, J. Pinto, N. Knecht, and R. V. Zon, *J. Phys. Conf. Ser.* **256**, 012026 (2010).