

Competition and duality correspondence between chiral and superconducting channels in $(2 + 1)$ -dimensional four-fermion models with fermion number and chiral chemical potentials

D. Ebert,¹ T. G. Khunjua,² K. G. Klimenko,³ and V. C. Zhukovsky²

¹*Institute of Physics, Humboldt-University Berlin, 12489 Berlin, Germany*

²*Faculty of Physics, Moscow State University, 119991 Moscow, Russia*

³*State Research Center of Russian Federation—Institute for High Energy Physics, NRC “Kurchatov Institute,” 142281 Protvino, Moscow Region, Russia*

(Received 4 March 2016; published 16 May 2016)

In this paper the duality correspondence between fermion-antifermion and difermion interaction channels is established in two $(2 + 1)$ -dimensional Gross-Neveu-type models with a fermion number chemical potential μ and a chiral chemical potential μ_5 . The role and influence of this property on the phase structure of the models are investigated. In particular, it is shown that the chemical potential μ_5 promotes the appearance of dynamical chiral symmetry breaking, whereas the chemical potential μ contributes to the emergence of superconductivity.

DOI: [10.1103/PhysRevD.93.105022](https://doi.org/10.1103/PhysRevD.93.105022)

I. INTRODUCTION

It is well known that relativistic quantum field theory models with four-fermion (4F) interactions serve as effective theories for low-energy considerations of different real phenomena in a variety of physical branches. For example, the meson spectroscopy, neutron star and heavy-ion collision physics are often investigated in the framework of $(3 + 1)$ -dimensional 4F theories [1,2], known as Nambu–Jona-Lasinio (NJL) models [3]. In particular, low dimensional 4F field theories provide a powerful tool for investigations in condensed-matter physics. Indeed, physics of (quasi)one-dimensional organic Peierls insulators (the best known material of this kind is polyacetylene) is well described in terms of the $(1 + 1)$ -dimensional 4F Gross-Neveu (GN) model [4–8]. The quasirelativistic treatment of electrons in planar systems like high-temperature superconductors or in graphene (a planar monoatomic layer of carbon atoms) is also possible in terms of $(2 + 1)$ -dimensional GN models [9–15].

Notice that there are physical effects, which were observed for the first time just in the framework of NJL- and GN-type models. In particular, the phenomenon of a dynamical generation of a fermion mass is well known for strong interaction physics since the time when Nambu and Jona-Lasinio [3] proved a dynamical breaking of the continuous γ_5 -symmetry on the basis of a generic 4F interaction theory. Later on, this effect served as the basis of a qualitatively successful description of the low-energy meson spectrum of quantum chromodynamics (QCD) [1]. The effect of dynamical symmetry breaking and generation of a fermion mass is also known in low dimensional, $D = 1 + 1$ and $D = 2 + 1$, GN theories [4,16–18], where the four-fermion theory is renormalizable and asymptotically free [4] in the case of $D = 1 + 1$, whereas for $D = 2 + 1$ the 4F GN models are perturbatively nonrenormalizable but

become renormalizable in the framework of the $1/N$ expansion technique [18] (N being the number of fermion fields). Another example of this kind is the effect of spontaneous chiral symmetry breaking induced by external magnetic or chromomagnetic fields. This effect was for the first time studied also in terms of the $(2 + 1)$ -dimensional GN model [19].

Note in addition that due to a rather simple structure, different low dimensional GN models provide a good laboratory for a deeper study of dense baryon matter and, in particular, for the consideration of such phenomena as (color)superconductivity [20,21], charged pion condensation [22,23], etc. Moreover, these theories are very useful in developing new quantum field theoretical techniques like the $1/N$ expansion [18], the optimized perturbation theory [24,25], and so on.

It is necessary to point out that there is one more, not yet mentioned above, phenomenon that is still a well-known feature of only some $(1 + 1)$ -dimensional 4F theories. This is the duality correspondence between chiral symmetry breaking and superconductivity [26–29]. [In order to avoid the prohibition of Cooper pairing as well as spontaneous breaking of a continuous symmetry in $(1 + 1)$ -dimensional models [30], the consideration should be performed in the leading order of the $1/N$ -technique, i.e. in the large- N limit assumption. In this case quantum fluctuations, which would otherwise destroy a long-range order corresponding to spontaneous symmetry breaking, are suppressed by $1/N$ factors.] To formulate this phenomenon, let us imagine that there is a microscopic 4F theory (for $D = 1 + 1$ see, e.g., [20,29]) which describes a competition between fermion-antifermion (or chiral) and difermion (or superconducting) channels of interaction. Moreover, we suppose that the ground state of the model is characterized by nonzero fermion number and chiral charge densities (the last is an

imbalance between densities of left- and right-handed fermions), i.e. there are two external parameters, fermion number- μ and chiral charge- μ_5 chemical potentials, respectively. Then the duality phenomenon means that the phase structure of this 4F model is symmetric with respect to the following simultaneous transformations $G_1 \leftrightarrow G_2, \mu \leftrightarrow \mu_5$ and chiral symmetry breaking \leftrightarrow superconductivity (here G_1 and G_2 are the coupling constants in the chiral and superconducting channels, respectively). Thus, there is a correspondence between properties (phase structure) of the model, e.g., at $G_1 < G_2$ and $G_1 > G_2$, etc. Moreover, knowing condensates and other dynamical and thermodynamical quantities of the system, e.g. in the chirally broken phase, one can obtain the corresponding quantities in the superconducting phase of the model, by simply performing there the duality transformation.

It is worth noting that in recent years properties of media with nonzero chiral chemical potential μ_5 , i.e. chiral media, attracted considerable interest (see, e.g., [31,32] and references therein). In nature, chiral media might be realized in heavy-ion collisions, compact stars, condensed matter systems, etc. [31] (see also the review [33]). In particular, one can expect that in the quark-gluon-plasma phase of QCD a chirality imbalance is produced, i.e. there appears a nonzero chiral charge density n_5 . The combined effect of the chiral imbalance and of the very strong magnetic field, which can be produced at noncentral heavy ion collision, results in the so-called chiral magnetic effect (see, e.g., the paper [34]). It means that there might be induced an electric current along the direction of the magnetic field. It is important to note that this phenomenon is described effectively in the framework of 4F models with a chiral chemical potential μ_5 , i.e. in terms of a quantity conjugated to the chiral charge density n_5 . Recently, it was established that in planar condensed matter systems there may exist a phenomenon, which can be regarded as an analogue of the QCD chiral magnetic effect [35]. This is the pseudochiral magnetic effect, which can be observed, e.g., in a distorted graphene sheet under the influence of external in-plane magnetic field. Indeed, due to a mechanical distortion of the lattice structure of graphene, there might appear a nonzero chiral charge density n_5 (chiral imbalance) as well as a conserved electric current along the in-plane external magnetic field (for details, see the paper [35]). Notice that, similar to the QCD chiral magnetic effect, one might expect that the pseudochiral magnetic effect can be effectively described in terms of $(2+1)$ -dimensional 4F models with nonzero chiral chemical potential μ_5 (in addition to the usual chemical potential μ). Finally, it is important to remark that a mechanical distortion of the lattice structure in graphene-like materials (as well as other external perturbations) can also lead to opening of different superconducting channels in the system [36].

Thus, it makes sense to study a competition between chiral symmetry breaking and superconductivity in $(2+1)$ -dimensional quantum field theories with chiral

chemical potential μ_5 . In particular, it is important to predict/observe the possible duality relations between these qualitatively different phenomena accompanied by μ_5 in field theories in spacetime dimensions $D > 1 + 1$.

In this paper we demonstrate that there exists a dual correspondence (or dual symmetry) between the phenomena of the chiral symmetry breaking and superconductivity in the framework of some $(2+1)$ -dimensional 4F models. The consideration is performed at zero temperature T , however it can be easily generalized to the case $T \neq 0$. We hope that our investigations shed some new light on the physical effects in planar condensed matter systems.

The paper is organized as follows. In Sec. II a $(2+1)$ -dimensional 4F GN-type model, containing both fermion-antifermion (or chiral) and difermion (or superconducting) interaction channels and including two kinds of chemical potentials, μ, μ_5 , is presented. Here we show that under the Pauli-Gürsey transformations of Fermi fields there is a dual relationship between the relevant 4F structures. Next, the unrenormalized thermodynamic potential (TDP) of the GN-type model is given in the leading order of the large- N expansion. In Sec. III the dual symmetry of the model TDP is established. It means that it is invariant under the interchange of coupling constants, μ, μ_5 chemical potentials and chiral and superconducting condensates. Moreover, the renormalization of the TDP is performed. Section IV contains a detailed numerical investigation of various phase portraits with particular emphasis on the role of the duality symmetry of the TDP. Some technical details are relegated to Appendices. Moreover, in Appendix B we present an alternative $(2+1)$ -dimensional GN model with dual relationship between other chiral and superconducting channels of 4F interaction.

II. THE MODEL AND ITS THERMODYNAMIC POTENTIAL

Our investigation is based on a $(2+1)$ -dimensional GN-type model with massless fermions belonging to a fundamental multiplet of the auxiliary $O(N)$ flavor group. Its Lagrangian describes the interaction both in the fermion-antifermion and difermion (or superconducting) channels:

$$L \equiv L(G_1, G_2; \mu, \mu_5) = \sum_{k=1}^N \bar{\psi}_k [\gamma^\nu i \partial_\nu + \mu \gamma^0 + \mu_5 \gamma^0 \gamma^5] \psi_k + \frac{G_1}{N} (4F)_{ch} + \frac{G_2}{N} (4F)_{sc}, \quad (1)$$

where the four-fermion structures $(4F)_{ch}$ and $(4F)_{sc}$ are used,

$$(4F)_{ch} = \left(\sum_{k=1}^N \bar{\psi}_k \psi_k \right)^2 + \left(\sum_{k=1}^N \bar{\psi}_k i \gamma^5 \psi_k \right)^2, \\ (4F)_{sc} = \left(\sum_{k=1}^N \psi_k^T C \psi_k \right) \left(\sum_{j=1}^N \bar{\psi}_j C \bar{\psi}_j^T \right). \quad (2)$$

In addition, μ and μ_5 in (1) denote a fermion number chemical potential and a chiral (axial) chemical potential, respectively. μ is conjugated to a fermion number density n , whereas μ_5 is conjugated to a nonzero density of chiral charge $n_5 = n_R - n_L$, which represents an imbalance in densities of the right- and left-handed fermions. As it is noted above, all fermion fields ψ_k ($k = 1, \dots, N$) form a fundamental multiplet of the $O(N)$ group. Moreover, each field ψ_k is a four-component (reducible) Dirac spinor (the symbol T denotes the transposition operation). Therefore, in Eqs. (1) and (2) the quantities γ^ν ($\nu = 0, 1, 2$) and γ^5 are matrices in the four-dimensional spinor space. Moreover, $C \equiv \gamma^2$ is the charge conjugation matrix. The algebra of these matrices as well as their particular representations are given in Appendix A. Clearly, the Lagrangian L is invariant under transformations from the internal auxiliary $O(N)$ group, which is introduced here in order to make it possible to perform all the calculations in the framework of the nonperturbative large- N expansion method. Physically more interesting is that the model (1) is invariant under transformations from the $U_V(1) \times U_{\gamma^5}(1)$ group, where $U_V(1)$ is the fermion number conservation group, $\psi_k \rightarrow \exp(i\alpha)\psi_k$ ($k = 1, \dots, N$), and $U_{\gamma^5}(1)$ is the group of continuous chiral transformations, $\psi_k \rightarrow \exp(i\alpha\gamma^5)\psi_k$ ($k = 1, \dots, N$). It means that in the framework of the model (1) both the particle number density $n = \sum_{k=1}^N \bar{\psi}_k \gamma^0 \psi_k$ and the density of chiral charge $n_5 = \sum_{k=1}^N \bar{\psi}_k \gamma^0 \gamma^5 \psi_k$ are conserved quantities.¹

Before studying the thermodynamics of the model, we would like to point out that there is a so-called duality correspondence between chiral and superconducting channels of the model (1). To see this, it is very useful to form an infinite set \mathcal{F} composed of all Lagrangians $L(G_1, G_2; \mu, \mu_5)$ when the free model parameters G_1, G_2, μ and μ_5 take arbitrary admissible values, i.e. $\mathcal{L}(G_1, G_2; \mu, \mu_5) \in \mathcal{F}$ at arbitrary fixed values of coupling constants $G_1 > 0, G_2 > 0$ and chemical potentials μ, μ_5 . Then, let us perform in (1) and (2) the so-called Pauli-Gürsey (PG) transformation of spinor fields [37],

$$\text{PG: } \psi_k(x) \rightarrow \frac{1}{2}(1 - \gamma^5)\psi_k(x) + \frac{1}{2}(1 + \gamma^5)C\bar{\psi}_k^T(x). \quad (3)$$

¹Since for the reducible four-component spinor representation there is one more Hermitian matrix γ^3 , which anticommutes with γ^ν ($\nu = 0, 1, 2$) and γ^5 , one can consider another continuous chiral $U_{\gamma^3}(1)$ transformation group of the spinor fields, $\psi_k \rightarrow \exp(i\alpha\gamma^3)\psi_k$ ($k = 1, \dots, N$). Alternatively, there exists a 4F model with another fermion-antifermion and difermion channels of interaction, which, in addition to $U_V(1)$, is invariant under the continuous chiral $U_{\gamma^3}(1)$ group (see Appendix B). It is worth mentioning that in the case of graphene reducible four-component spinors just describe the two sublattice (or pseudo-spin) and two valley (or Dirac point) degrees of freedom of the hexagonal honeycomb lattice of carbon atoms (see e.g. [15] and references therein).

Taking into account that all spinor fields anticommute with each other, it is easy to see that under the action of the transformations (3) the 4F structures of the Lagrangian (1) are converted into themselves, i.e.

$$(4F)_{ch} \xleftrightarrow{\text{PG}} (4F)_{sc}, \quad (4)$$

and, moreover, each element (Lagrangian) $L(G_1, G_2; \mu, \mu_5)$ of the set \mathcal{F} is transformed into another element of the set \mathcal{F} according to the following rule:

$$L(G_1, G_2; \mu, \mu_5) \xleftrightarrow{\text{PG}} L(G_2, G_1; -\mu_5, -\mu) \in \mathcal{F}, \quad (5)$$

i.e. the set \mathcal{F} is invariant under the field transformations (3). Owing to the relations (4) and (5) there is a connection between properties of the model at some fixed free model parameters G_1, G_2, μ, μ_5 and properties of the model in the case, when $G_1 \leftrightarrow G_2$ and $\mu \leftrightarrow \mu_5$. In particular, if at some fixed G_1, G_2, μ and μ_5 we have the chiral symmetry breaking (CSB) phase, then at $G_1 \leftrightarrow G_2$ and $\mu \leftrightarrow \mu_5$ one can definitely predict the superconducting (SC) phase, and vice versa. Due to this reason, we will call the relations (4) and (5) the duality property of the model (or duality correspondence between CSB and SC). Note also that in Appendix B we present another (2 + 1)-dimensional 4F model, in which the duality correspondence between alternative chiral and superconducting channels is realized.

Further on, we will study the role and the influence of the duality property of the model (1) on its phase structure. To this end, we introduce the semibosonized version of Lagrangian (1) that contains only quadratic powers of fermionic fields as well as auxiliary bosonic fields $\sigma(x), \pi(x), \Delta(x)$ and $\Delta^*(x)$,

$$\begin{aligned} \mathcal{L} = & \bar{\psi}_k [\gamma^\nu i\partial_\nu + \mu\gamma^0 + \mu_5\gamma^0\gamma^5 - \sigma - i\gamma^5\pi] \psi_k \\ & - \frac{N(\sigma^2 + \pi^2)}{4G_1} - \frac{N}{4G_2} \Delta^* \Delta - \frac{\Delta^*}{2} [\psi_k^T C \psi_k] \\ & - \frac{\Delta}{2} [\bar{\psi}_k C \bar{\psi}_k^T]. \end{aligned} \quad (6)$$

(Here and in what follows the summations over repeated indices $k = 1, \dots, N$ and $\nu = 0, 1, 2$ are implied.) Clearly, the Lagrangians (1) and (6) are equivalent, as can be seen by using the Euler-Lagrange equations of motion for bosonic fields which take the form

$$\begin{aligned} \sigma(x) = & -2\frac{G_1}{N}(\bar{\psi}_k \psi_k), \quad \pi(x) = -2\frac{G_1}{N}(\bar{\psi}_k i\gamma^5 \psi_k), \\ \Delta(x) = & -2\frac{G_2}{N}(\psi_k^T C \psi_k), \quad \Delta^*(x) = -2\frac{G_2}{N}(\bar{\psi}_k C \bar{\psi}_k^T). \end{aligned} \quad (7)$$

One can easily see from (7) that the neutral fields $\sigma(x)$ and $\pi(x)$ are real quantities, i.e. $(\sigma(x))^\dagger = \sigma(x)$ and $(\pi(x))^\dagger = \pi(x)$ (the superscript symbol \dagger denotes the Hermitian

conjugation), but the (charged) difermion fields $\Delta(x)$ and $\Delta^*(x)$ are Hermitian conjugated complex quantities, so that $(\Delta(x))^\dagger = \Delta^*(x)$ and vice versa. Moreover, under the chiral $U_{\gamma^5}(1)$ group the fields $\Delta(x)$, $\Delta^*(x)$ are singlets, but the fields $\sigma(x)$, $\pi(x)$ are transformed in the following way:

$$\begin{aligned} U_{\gamma^5}(1): \sigma(x) &\rightarrow \cos(2\alpha)\sigma(x) + \sin(2\alpha)\pi(x), \\ \pi(x) &\rightarrow -\sin(2\alpha)\sigma(x) + \cos(2\alpha)\pi(x). \end{aligned} \quad (8)$$

Clearly, all the fields (7) are also singlets with respect to the auxiliary $O(N)$ group, since the representations of this group are real. Moreover, with respect to the parity transformation P ,

$$P: \psi_k(t, x, y) \rightarrow i\gamma^5\gamma^1\psi_k(t, -x, y), \quad k = 1, \dots, N, \quad (9)$$

the fields $\sigma(x)$, $\Delta(x)$ and $\Delta^*(x)$ are even quantities, i.e. scalars, but $\pi(x)$ is a pseudoscalar. If the difermion field $\Delta(x)$ has a nonzero ground state expectation value, i.e. $\langle\Delta(x)\rangle \neq 0$, then the Abelian fermion number conservation $U_V(1)$ symmetry of the model is spontaneously broken down and the superconducting phase is realized in the model. However, if $\langle\sigma(x)\rangle \neq 0$ then the continuous $U_{\gamma^5}(1)$ chiral symmetry of the model is spontaneously broken.

Let us now study the phase structure of the four-fermion model (1) starting from the equivalent semibosonized Lagrangian (6). In the leading order of the large- N approximation, the effective action $\mathcal{S}_{\text{eff}}(\sigma, \pi, \Delta, \Delta^*)$ of the considered model is expressed by means of the path integral over fermion fields:

$$\exp(i\mathcal{S}_{\text{eff}}(\sigma, \pi, \Delta, \Delta^*)) = \int \prod_{l=1}^N [d\bar{\psi}_l][d\psi_l] \exp\left(i \int \mathcal{L} d^3x\right),$$

leading to

$$\begin{aligned} \mathcal{S}_{\text{eff}}(\sigma, \pi, \Delta, \Delta^*) &= - \int d^3x \left[\frac{N(\sigma^2(x) + \pi^2(x))}{4G_1} \right. \\ &\quad \left. + \frac{N}{4G_2} \Delta(x)\Delta^*(x) \right] + \tilde{\mathcal{S}}_{\text{eff}}. \end{aligned} \quad (10)$$

The term $\tilde{\mathcal{S}}_{\text{eff}}$ in (10) is the fermion contribution to the effective action and is given by

$$\begin{aligned} \exp(i\tilde{\mathcal{S}}_{\text{eff}}) &= \int \prod_{l=1}^N [d\bar{\psi}_l][d\psi_l] \exp\left\{ i \int \left[\bar{\psi}_k(\gamma^\nu i\partial_\nu + \mu\gamma^0 \right. \right. \\ &\quad \left. \left. + \mu_5\gamma^0\gamma^5 - \sigma - i\gamma^5\pi)\psi_k - \frac{\Delta^*}{2}(\psi_k^T C\psi_k) \right. \right. \\ &\quad \left. \left. - \frac{\Delta}{2}(\bar{\psi}_k C\bar{\psi}_k^T) \right] d^3x \right\}. \end{aligned} \quad (11)$$

The ground state expectation values $\langle\sigma(x)\rangle$, $\langle\Delta(x)\rangle$, etc. of the composite bosonic fields are determined by the saddle point equations,

$$\begin{aligned} \frac{\delta\mathcal{S}_{\text{eff}}}{\delta\sigma(x)} &= 0, & \frac{\delta\mathcal{S}_{\text{eff}}}{\delta\pi(x)} &= 0, \\ \frac{\delta\mathcal{S}_{\text{eff}}}{\delta\Delta(x)} &= 0, & \frac{\delta\mathcal{S}_{\text{eff}}}{\delta\Delta^*(x)} &= 0. \end{aligned} \quad (12)$$

For simplicity, throughout the paper we suppose that the above-mentioned ground state expectation values do not depend on spacetime coordinates, i.e.

$$\begin{aligned} \langle\sigma(x)\rangle &\equiv M, & \langle\pi(x)\rangle &\equiv \pi, \\ \langle\Delta(x)\rangle &\equiv \Delta, & \langle\Delta^*(x)\rangle &\equiv \Delta^*, \end{aligned} \quad (13)$$

where M , π , Δ , Δ^* are constant quantities. In fact, they are coordinates of the global minimum point of the thermodynamic potential (TDP) $\Omega(M, \pi, \Delta, \Delta^*)$. In the leading order of the large- N expansion and using (13) it is defined by the following expression:

$$\begin{aligned} &\int d^3x \Omega(M, \pi, \Delta, \Delta^*) \\ &= -\frac{1}{N} \mathcal{S}_{\text{eff}}(\sigma(x), \pi(x), \Delta(x), \Delta^*(x)) \Big|_{\sigma(x)=\langle\sigma(x)\rangle, \Delta(x)=\langle\Delta(x)\rangle, \dots} \end{aligned} \quad (14)$$

The TDP (14) is invariant with respect to chiral $U_{\gamma^5}(1)$ symmetry group. So, as it is clear from (8), it depends on the quantities M and π through the combination $M^2 + \pi^2$. Moreover, without loss of generality, one can suppose that $\langle\pi(x)\rangle \equiv \pi = 0$. Thus, to find the other ground state expectation values $\langle\sigma(x)\rangle$ etc., it is enough to study the global minimum point of the TDP $\Omega(M, \Delta, \Delta^*)$,

$$\Omega(M, \Delta, \Delta^*) \equiv \Omega(M, \pi, \Delta, \Delta^*) \Big|_{\pi=0}. \quad (15)$$

Taking into account the relations (10), (11) and (14), we have from (15)

$$\begin{aligned} &\int d^3x \Omega(M, \Delta, \Delta^*) \\ &= \int d^3x \left(\frac{M^2}{4G_1} + \frac{\Delta\Delta^*}{4G_2} \right) \\ &\quad + \frac{i}{N} \ln \left(\int \prod_{l=1}^N [d\bar{\psi}_l][d\psi_l] \exp\left(i \int d^3x \right. \right. \\ &\quad \left. \left. \times \left[\bar{\psi}_k D\psi_k - \frac{\Delta^*}{2}(\psi_k^T C\psi_k) - \frac{\Delta}{2}(\bar{\psi}_k C\bar{\psi}_k^T) \right] \right) \right), \end{aligned} \quad (16)$$

where $D = \gamma^\rho i\partial_\rho + \mu\gamma^0 + \mu_5\gamma^0\gamma^5 - M$. To proceed further, let us point out again that without loss of generality the

quantities Δ , Δ^* might be considered as real ones.² So, in what follows we will suppose that $\Delta = \Delta^* \equiv \Delta$, where Δ now is already a real quantity.

III. CALCULATION OF THE TDP

The path integration in the expression (16) is evaluated in Appendix C,³ so we have for the TDP (16) the following expression:

$$\begin{aligned} \Omega(M, \Delta) &\equiv \Omega^{un}(M, \Delta) \\ &= \frac{M^2}{4G_1} + \frac{\Delta^2}{4G_2} + \frac{i}{2} \\ &\quad \times \int \frac{d^3p}{(2\pi)^3} \ln[\lambda_1(p)\lambda_2(p)\lambda_3(p)\lambda_4(p)], \end{aligned} \quad (17)$$

where $\lambda_{1,\dots,4}(p)$ are presented in (C8) and superscription “un” denotes the unrenormalized quantity. Note that the TDP (17) describes thermodynamics of the model at zero temperature. Taking into account the expressions (C8), the TDP (17) can be presented in the form

$$\Omega^{un}(M, \Delta) = \frac{M^2}{4G_1} + \frac{\Delta^2}{4G_2} + \frac{i}{2} \sum_{\eta=\pm} \int \frac{d^3p}{(2\pi)^3} \ln P_\eta(p_0), \quad (18)$$

where $P_\eta(p_0) \equiv a + \eta b p_0 - 2c p_0^2 + p_0^4$ and

$$\begin{aligned} a &= (\mu_5^2 - \mu^2 + M^2 - \Delta^2)^2 \\ &\quad - 2|\vec{p}|^2(\mu_5^2 + \mu^2 - M^2 - \Delta^2) + |\vec{p}|^4, \\ b &= 8\mu\mu_5|\vec{p}|, \quad c = \mu_5^2 + |\vec{p}|^2 + \mu^2 + M^2 + \Delta^2, \\ |\vec{p}| &= \sqrt{p_1^2 + p_2^2}. \end{aligned} \quad (19)$$

It is clear from (19) that the TDP (18) is an even function of each of the quantities μ , μ_5 , M , and Δ , i.e. without loss of generality we can consider in the following only $\mu \geq 0$, $\mu_5 \geq 0$, $M \geq 0$, and $\Delta \geq 0$ values of these quantities. Moreover, the TDP (18) is invariant with respect to the so-called duality transformation [28,29],

$$D: G_1 \leftrightarrow G_2, \quad M \leftrightarrow \Delta, \quad \mu \leftrightarrow \mu_5. \quad (20)$$

Notice that this invariance of the TDP is a consequence of the rule (5), according to which the 4F Lagrangian (1) is

²Otherwise, phases of the complex values Δ , Δ^* might be eliminated by an appropriate transformation of fermion fields in the path integral (16).

³In Appendix C we consider for simplicity the case $N = 1$, however the procedure is easily generalized to the case with $N > 1$.

modified under the Pauli-Gürsey transformation (3) of the spinor field.

In powers of Δ the fourth-degree polynomial $P_\eta(p_0)$ has the following form:

$$\begin{aligned} P_\eta(p_0) &\equiv \Delta^4 - 2\Delta^2(p_0^2 - |\vec{p}|^2 + M^2 + \mu_5^2 - \mu^2) \\ &\quad + (M^2 + (|\vec{p}| - \mu_5)^2 - (p_0 - \eta\mu)^2) \\ &\quad \times (M^2 + (|\vec{p}| + \mu_5)^2 - (p_0 + \eta\mu)^2). \end{aligned} \quad (21)$$

Expanding the right-hand side of (21) in powers of M , one can obtain an equivalent alternative expression for this polynomial. Namely,

$$\begin{aligned} P_\eta(p_0) &\equiv M^4 - 2M^2(p_0^2 - |\vec{p}|^2 + \Delta^2 + \mu^2 - \mu_5^2) \\ &\quad + (\Delta^2 + (|\vec{p}| - \mu)^2 - (p_0 - \eta\mu_5)^2) \\ &\quad \times (\Delta^2 + (|\vec{p}| + \mu)^2 - (p_0 + \eta\mu_5)^2). \end{aligned} \quad (22)$$

Note also that according to the general theorem of algebra, the polynomial $P_\eta(p_0)$ can be presented in the form

$$P_\eta(p_0) \equiv (p_0 - p_{01}^\eta)(p_0 - p_{02}^\eta)(p_0 - p_{03}^\eta)(p_0 - p_{04}^\eta), \quad (23)$$

where p_{01}^η , p_{02}^η , p_{03}^η and p_{04}^η are the roots of this polynomial. The fourth-order polynomial with similar coefficients a , b , c (19) was studied in our paper [29], where it was shown that all its roots p_{0i}^η ($i = 1, \dots, 4$) are real quantities (see Appendix B in [29]). The roots p_{0i}^η are the energies of quasiparticle or quasiantiparticle excitations of the system. In particular, it follows from (21) that at $\Delta = 0$

$$\begin{aligned} (p_{01}^\eta, p_{02}^\eta)|_{\Delta=0} &= \eta\mu \pm \sqrt{M^2 + (\mu_5 - |\vec{p}|)^2}, \\ (p_{03}^\eta, p_{04}^\eta)|_{\Delta=0} &= -\eta\mu \pm \sqrt{M^2 + (\mu_5 + |\vec{p}|)^2}, \end{aligned} \quad (24)$$

whereas it is clear from (22) that at $M = 0$

$$\begin{aligned} (p_{01}^\eta, p_{02}^\eta)|_{M=0} &= \eta\mu_5 \pm \sqrt{\Delta^2 + (\mu - |\vec{p}|)^2}, \\ (p_{03}^\eta, p_{04}^\eta)|_{M=0} &= -\eta\mu_5 \pm \sqrt{\Delta^2 + (\mu + |\vec{p}|)^2}. \end{aligned} \quad (25)$$

Taking into account in (18) the relation (23) as well as the formula

$$\int_{-\infty}^{\infty} dp_0 \ln(p_0 - K) = i\pi|K| \quad (26)$$

(obtained rigorously, e.g., in Appendix B of [23] and being true up to an infinite term independent of the real quantity K), it is possible to integrate there over p_0 . So the unrenormalized TDP (18) can be presented in the following form:

$$\Omega^{un}(M, \Delta) = \frac{M^2}{4G_1} + \frac{\Delta^2}{4G_2} - \frac{1}{4} \sum_{\eta=\pm} \int \frac{d^2 p}{(2\pi)^2} (|p_{01}^\eta| + |p_{02}^\eta| + |p_{03}^\eta| + |p_{04}^\eta|). \quad (27)$$

A. Renormalization and phase structure in the vacuum case: $\mu = 0, \mu_5 = 0$

First of all, let us obtain a finite, i.e. renormalized, expression for the TDP (27) at $\mu = 0$ and $\mu_5 = 0$, i.e. in vacuum. Since in this case a thermodynamic potential is usually called effective potential, we use for it the notation $V^{un}(M, \Delta)$. It follows from (18) and (19) that at $\mu = 0$ and $\mu_5 = 0$ $V^{un}(M, \Delta)$ looks like

$$\begin{aligned} V^{un}(M, \Delta) &= \frac{M^2}{4G_1} + \frac{\Delta^2}{4G_2} + i \int \frac{d^3 p}{(2\pi)^3} \ln[(p_0^2 - E_+^2)(p_0^2 - E_-^2)] \\ &\equiv \frac{M^2}{4G_1} + \frac{\Delta^2}{4G_2} - \int \frac{d^2 p}{(2\pi)^2} \left(\sqrt{|\vec{p}|^2 + (M + \Delta)^2} + \sqrt{|\vec{p}|^2 + (M - \Delta)^2} \right), \end{aligned} \quad (28)$$

where $E_\pm = \sqrt{|\vec{p}|^2 + (M \pm \Delta)^2}$. [To obtain the second line of this formula, we have integrated there over p_0 according to the relation (26).] It is evident that the effective potential (28) is an ultraviolet divergent quantity. So, we need to renormalize it. This procedure consists of two steps: (i) First of all we need to regularize the divergent integral in (28), i.e. we suppose there that $|p_1| < \Lambda$, $|p_2| < \Lambda$. (ii) Second, we must suppose also that the bare coupling constants G_1 and G_2 depend on the cutoff parameter Λ in such a way that in the limit $\Lambda \rightarrow \infty$ one obtains a finite expression for the effective potential.

Before performing the steps (i) and (ii) of the renormalization procedure, it is useful to take into account the following asymptotic expansion at $|\vec{p}| \rightarrow \infty$:

$$\begin{aligned} &\sqrt{|\vec{p}|^2 + (M + \Delta)^2} + \sqrt{|\vec{p}|^2 + (M - \Delta)^2} \\ &= 2|\vec{p}| + \frac{(M^2 + \Delta^2)}{|\vec{p}|} + \mathcal{O}(1/|\vec{p}|^3). \end{aligned} \quad (29)$$

Then, after construction of the regularized effective potential $V^{\text{reg}}(M, \Delta)$ (see below), we use there the asymptotic expansion (29) and integrate it over p_1 and p_2 term by term. The result reads

$$\begin{aligned} V^{\text{reg}}(M, \Delta) &\equiv \frac{M^2}{4G_1} + \frac{\Delta^2}{4G_2} - \int_{-\Lambda}^{\Lambda} \frac{dp_1}{2\pi} \int_{-\Lambda}^{\Lambda} \frac{dp_2}{2\pi} \left(\sqrt{|\vec{p}|^2 + (M + \Delta)^2} + \sqrt{|\vec{p}|^2 + (M - \Delta)^2} \right) \\ &= M^2 \left[\frac{1}{4G_1} - \frac{2\Lambda \ln(1 + \sqrt{2})}{\pi^2} \right] + \Delta^2 \left[\frac{1}{4G_2} - \frac{2\Lambda \ln(1 + \sqrt{2})}{\pi^2} \right] - \frac{2\Lambda^3(\sqrt{2} + \ln(1 + \sqrt{2}))}{3\pi^2} + \mathcal{O}(\Lambda^0), \end{aligned} \quad (30)$$

where $\mathcal{O}(\Lambda^0)$ denotes an expression which is finite in the limit $\Lambda \rightarrow \infty$. Now, we should suppose that the bare coupling constants G_1 and G_2 depend on the cutoff parameter Λ in such a way that in the limit $\Lambda \rightarrow \infty$ one obtains a finite expressions in the square brackets of (30). Clearly, to fulfill this requirement it is sufficient to require that

$$\begin{aligned} \frac{1}{4G_1} &\equiv \frac{1}{4G_1(\Lambda)} = \frac{2\Lambda \ln(1 + \sqrt{2})}{\pi^2} + \frac{1}{2\pi g_1}, \\ \frac{1}{4G_2} &\equiv \frac{1}{4G_2(\Lambda)} = \frac{2\Lambda \ln(1 + \sqrt{2})}{\pi^2} + \frac{1}{2\pi g_2}, \end{aligned} \quad (31)$$

where $g_{1,2}$ are finite and Λ -independent model parameters with dimensionality of inverse mass. Since bare couplings G_1 and G_2 do not depend on a normalization point, the

same property is also valid for $g_{1,2}$. Hence, taking into account in (30) the relations (31) and ignoring there an infinite M - and Δ -independent constant, one obtains the following *renormalized*, i.e. finite, expression $V^{\text{ren}}(M, \Delta)$ for the effective potential:

$$\begin{aligned} V^{\text{ren}}(M, \Delta) &= \lim_{\Lambda \rightarrow \infty} \left\{ V^{\text{reg}}(M, \Delta) \Big|_{G_1=G_1(\Lambda), G_2=G_2(\Lambda)} \right. \\ &\quad \left. + \frac{2\Lambda^3(\sqrt{2} + \ln(1 + \sqrt{2}))}{3\pi^2} \right\}. \end{aligned} \quad (32)$$

It should also be mentioned that the effective potential (32) is a renormalization group invariant quantity.

The fact that it is possible to renormalize the effective potential of the initial model (1) in the leading order of the large N -expansion is the reflection of a more general

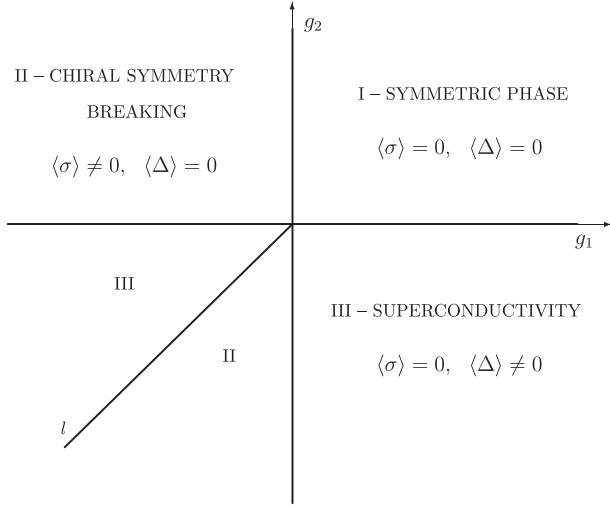


FIG. 1. The (g_1, g_2) -phase portrait of the model at $\mu = 0$ and $\mu_5 = 0$. The notations I, II and III mean the symmetric, the chiral symmetry breaking (CSB) and the superconducting (SC) phases, respectively. At $g_{1,2} < 0$ the line l is defined by the relation $l \equiv \{(g_1, g_2) : g_1 = g_2\}$.

property of $(2 + 1)$ -dimensional theories with four-fermion interactions. Indeed, it is well known that in the framework of the “naive” perturbation theory (over coupling constants) these models are not renormalizable. However, as it was proved in [18], in the framework of nonperturbative large N -technique these models are renormalizable in each order of the $1/N$ -expansion.

The $\mathcal{O}(\Lambda^0)$ term in (30) can be calculated explicitly, so we have for the renormalized effective potential $V^{\text{ren}}(M, \Delta)$ (32) the following expression:

$$V^{\text{ren}}(M, \Delta) = \frac{M^2}{2\pi g_1} + \frac{\Delta^2}{2\pi g_2} + \frac{(M + \Delta)^3}{6\pi} + \frac{|M - \Delta|^3}{6\pi}. \quad (33)$$

The global minimum point (M_0, Δ_0) , where $M_0 = \langle \sigma(x) \rangle$ and $\Delta_0 = \langle \Delta(x) \rangle$, of this function was already investigated in [38], although in the framework of another $(2 + 1)$ -dimensional GN model. So, we present at once the phase structure of the initial model (1) at $\mu = 0$ and $\mu_5 = 0$ (see Fig. 1).

In Fig. 1 the phase portrait of the model is depicted depending on the values of the free model parameters g_1 and g_2 . There the plane (g_1, g_2) is divided into several areas. In each area one of the phases (I, II or III) is implemented. In phase I, i.e. at $g_1 > 0$ and $g_2 > 0$, the global minimum of the effective potential $V^{\text{ren}}(M, \Delta)$ is arranged at the origin. So in this case we have $M_0 = 0$ and $\Delta_0 = 0$. As a result, in phase I both continuous symmetries, chiral $U_{\gamma^5}(1)$ and electromagnetic $U_V(1)$, remain intact and fermions are massless. Due to this reason phase I is called symmetric. In phase II, which is allowed only for $g_1 < 0$, at the global minimum point the relations $M_0 = -1/g_1$ and $\Delta_0 = 0$ are

valid. So in this phase chiral $U_{\gamma^5}(1)$ symmetry is spontaneously broken down and fermions acquire dynamically the mass M_0 . Finally, in the superconducting phase III, where $g_2 < 0$, we have spontaneous breaking of the $U_V(1)$ symmetry. This phase corresponds to the following values of the gaps: $M_0 = 0$, $\Delta_0 = -1/g_2$.

Note also that if $g_1 = g_2 \equiv g$ and, in addition, $g < 0$ (it is just line l in Fig. 1), then the effective potential (33) has two equivalent global minima. The first one, the point $(M_0 = -1/g, \Delta_0 = 0)$, corresponds to a phase with chiral symmetry breaking. The second one, i.e. the point $(M_0 = 0, \Delta_0 = -1/g)$, corresponds to superconductivity.

Clearly, if the cutoff parameter Λ is fixed, then the phase structure of the model can be described in terms of bare coupling constants G_1, G_2 instead of finite quantities g_1, g_2 . Indeed, let us first introduce a critical value of the couplings, $G_c = \frac{\pi^2}{8\Lambda \ln(1+\sqrt{2})}$. Then, as it follows from

Fig. 1 and (31), at $G_1 < G_c$ and $G_2 < G_c$ the symmetric phase I of the model is located. If $G_1 > G_c$, $G_2 < G_c$ ($G_1 < G_c$, $G_2 > G_c$), then the chiral symmetry broken phase II (the superconducting phase III) is realized. Finally, let us suppose that both $G_1 > G_c$ and $G_2 > G_c$. In this case at $G_1 > G_2$ ($G_1 < G_2$) we have again the chiral symmetry broken phase II (the superconducting phase III).

Now, a few comments about the nature of the superconductivity (SC) and chiral symmetry breaking (CSB) are in order. In the framework of the model (1) there are two well-known mechanisms for appearing of these phenomena, (i) dynamical symmetry breaking, which occurs at strong couplings, and (ii) Cooper instability of the Fermi surface, which takes place, in contrast to the case (i), at weak couplings. If $\mu = 0$ and $\mu_5 = 0$, then the initial model (1) describes effectively the undoped regime of high temperature cuprate superconductors, etc. (see, e.g., the papers [11], where the phase structure, similar to the phase diagram of our Fig. 1, was obtained). In this case the Fermi surface is absent, so both CSB and SC phases appear dynamically in the system at a *rather strong attraction* in the fermion-antifermion or difermion channels, i.e. at $G_1 > G_c$ and $G_1 > G_2$ or at $G_2 > G_c$ and $G_2 > G_1$, respectively. Hence, at zero values of chemical potentials only the mechanism (i) for generating both SC and CSB is realized in our model.⁴

The second way, i.e. the mechanism (ii), to break spontaneously a symmetry can be realized only at nonzero chemical potentials. For example, if the doping or

⁴The mechanism of dynamical symmetry breaking at $\mu = 0$ is well known since the papers by Nambu and Jona-Lasinio [3]. It is also valid in the framework of other $(3 + 1)$ -dimensional 4F models with chiral and color superconducting channels of interaction at $\mu = 0$ [39]. In [39] the bare coupling constants G_1 and G_2 are free model parameters. Moreover, strong constraints were obtained there on G_1 and G_2 , at which color SC or CSB is generated dynamically in the models.

impurities are present in the system, then one must introduce a finite chemical potential μ . In this case the Fermi surface can be created. As a result, if there is an *arbitrary small attraction* in the SC channel, i.e. even at $G_2 < G_c$, there appears the so-called Cooper instability of the Fermi surface, which destroys the normal ground state in favor of superconductivity. [Below, when discussing the phase portrait of Fig. 5 (see Sec. IV B 1), we will see that at $\mu_5 = 0$ and $\mu > 0$ both (i) and (ii) mechanisms take part in forming the phase structure.] If $\mu = 0$ but $\mu_5 \neq 0$, then CSB can also be generated in the model due to the mechanism (ii) at arbitrary small values of G_1 (see in [32]). This fact supports the duality correspondence between SC and CSB in the model (1).

B. Renormalization of the TDP (27) in the general case

To renormalize the TDP (27) in the most general case, it is necessary to imagine how the integrand of (27), i.e. the quantity $\sum_{\eta=\pm} \sum_{i=1}^4 |p_{0i}^\eta|$, behaves at asymptotically high values of $|\vec{p}|$. The properties of the roots p_{0i}^η ($i = 1, \dots, 4$) of the polynomial $P_\eta(p_0)$ appearing in (18) can be obtained both numerically and analytically using the methods of Appendix B of [29]. So it is easy to show that at $|\vec{p}| \rightarrow \infty$

$$\frac{1}{4} \sum_{\eta=\pm} \sum_{i=1}^4 |p_{0i}^\eta| = 2|\vec{p}| + \frac{(M^2 + \Delta^2)}{|\vec{p}|} + \mathcal{O}(1/|\vec{p}|^3). \quad (34)$$

Since the asymptotic expansions (34) and (29) coincide, one can subtract from the integrand of (27) the expression $4(E_+ + E_-)$, thereby obtaining a convergent integral. Taking into account this circumstance, we have identically

$$\Omega^{un}(M, \Delta) = V^{un}(M, \Delta) - \tilde{\Omega}(M, \Delta), \quad (35)$$

where $V^{un}(M, \Delta)$ is the effective potential (28) of the model in vacuum, i.e. at $\mu = 0$ and $\mu_5 = 0$, and

$$\tilde{\Omega}(M, \Delta) = \frac{1}{4} \int \frac{d^2 p}{(2\pi)^2} \left[\sum_{\eta=\pm} \sum_{i=1}^4 |p_{0i}^\eta| - 4\sqrt{|\vec{p}|^2 + (M + \Delta)^2} - 4\sqrt{|\vec{p}|^2 + (M - \Delta)^2} \right]. \quad (36)$$

It is clear that the term $\tilde{\Omega}(M, \Delta)$ in (35) is a convergent integral and all ultraviolet divergences of the TDP (27)–(35) are located in the term $V^{un}(M, \Delta)$. Hence, we can renormalize only the first term of (35) in the way of the previous subsection and obtain finally,

$$\Omega^{\text{ren}}(M, \Delta) = V^{\text{ren}}(M, \Delta) - \tilde{\Omega}(M, \Delta), \quad (37)$$

where $V^{\text{ren}}(M, \Delta)$ and $\tilde{\Omega}(M, \Delta)$ are presented in (33) and (36), correspondingly.

It was already mentioned above that using the method presented in Appendix B of the paper [29], the roots p_{0i}^η can be calculated numerically (at fixed values of $|\vec{p}|$, M , Δ , etc.). As a result, it is also possible to study numerically the whole TDP (37). Carrying out this procedure, we have seen that the global minimum of the TDP $\Omega^{\text{ren}}(M, \Delta)$ is always at the point of the form $(M \geq 0, \Delta = 0)$ or $(M = 0, \Delta \geq 0)$. So, to get a more detailed information about the phase structure of the model, it is sufficient to investigate the reductions of the TDP (37) on the M and Δ axes,⁵ i.e. to consider the functions

$$\begin{aligned} F_1(M) &\equiv \Omega^{\text{ren}}(M, \Delta = 0) = V_1(M) - \frac{1}{2} \int \frac{d^2 p}{(2\pi)^2} \sum_{\eta=\pm} \left[\mu + \mathcal{E}_\eta + |\mu - \mathcal{E}_\eta| - 2\sqrt{|\vec{p}|^2 + M^2} \right] \\ &= V_1(M) - \int \frac{d^2 p}{(2\pi)^2} \sum_{\eta=\pm} \left[\mathcal{E}_\eta - \sqrt{|\vec{p}|^2 + M^2} + (\mu - \mathcal{E}_\eta)\theta(\mu - \mathcal{E}_\eta) \right], \end{aligned} \quad (38)$$

$$\begin{aligned} F_2(\Delta) &\equiv \Omega^{\text{ren}}(M = 0, \Delta) = V_2(\Delta) - \int \frac{d^2 p}{(2\pi)^2} \sum_{\eta=\pm} \left[\sqrt{\Delta^2 + (|\vec{p}| + \eta\mu)^2} - \sqrt{|\vec{p}|^2 + M^2} \right. \\ &\quad \left. + (\mu_5 - \sqrt{\Delta^2 + (|\vec{p}| + \eta\mu)^2})\theta(\mu_5 - \sqrt{\Delta^2 + (|\vec{p}| + \eta\mu)^2}) \right], \end{aligned} \quad (39)$$

respectively, where $\mathcal{E}_\eta = \sqrt{M^2 + (|\vec{p}| + \eta\mu_5)^2}$ and $3\pi V_i(x) = x^3 + 3x^2/(2g_i)$ is the reduction of the vacuum effective potential (33) on the M (in this case $i = 1, x = M$) or Δ (in this case $i = 2, x = \Delta$) axes. Moreover, to obtain the second line in (38) we use the evident relations, $|x| = x\theta(x) - x\theta(-x)$ and $1 = \theta(x) + \theta(-x)$. After tedious but straightforward calculations, the TDP (38) can be presented in the following form (see Appendix D):

⁵This procedure can be easily performed since the reduction of the roots p_{0i}^η on the M and Δ axes is known [see (24) and (25)].

$$\begin{aligned}
F_1(M) = & \frac{M^2}{2\pi g_1} + \frac{(\mu_5^2 + M^2)^{3/2}}{3\pi} - \frac{\theta(\mu - \sqrt{M^2 + \mu_5^2})}{6\pi} [\mu^3 - 3\mu(M^2 - \mu_5^2) + 2(\mu_5^2 + M^2)^{3/2}] \\
& - \frac{\theta(\sqrt{M^2 + \mu_5^2} - \mu)}{2\pi} \left[\mu_5^2 \sqrt{\mu_5^2 + M^2} + \mu_5 M^2 \ln \left(\frac{\mu_5 + \sqrt{\mu_5^2 + M^2}}{M} \right) \right] \\
& - \frac{\theta(\mu - M)\theta(\sqrt{M^2 + \mu_5^2} - \mu)}{2\pi} \left[\mu_5 \mu \sqrt{\mu^2 - M^2} - \mu_5 M^2 \ln \left(\frac{\mu + \sqrt{\mu^2 - M^2}}{M} \right) \right] \quad (40)
\end{aligned}$$

[at $\mu_5 = 0$ this expression coincides with the corresponding TDP (22) from the paper [12]]. Moreover, comparing the expressions (38) and (39), we see that the quantity $\Omega^{\text{ren}}(M=0, \Delta)$ can be easily obtained from the TDP $\Omega^{\text{ren}}(M, \Delta=0)$ by the substitutions $M \rightarrow \Delta$, $g_1 \rightarrow g_2$ and $\mu \leftrightarrow \mu_5$, i.e.

$$F_2(\Delta) = F_1(\Delta)|_{g_1 \rightarrow g_2, \mu \leftrightarrow \mu_5}. \quad (41)$$

Clearly, the connection (41) between the reductions of the TDP $\Omega^{\text{ren}}(M, \Delta)$ on the M and Δ axes is the consequence of the duality property (20) of the model.

Next, in order to find the phase structure of the model, we will determine the global minimum points of the TDPs $F_1(M)$ (40) and $F_2(\Delta)$ (41) and then compare the minimum values of these functions vs external parameters μ , μ_5 , g_1 , g_2 .

IV. PHASE STRUCTURE: THE ROLE OF THE DUALITY INVARIANCE OF THE TDP

Suppose now that at some fixed particular values of the model parameters, i.e. at $g_1 = A$, $g_2 = B$ and $\mu = \alpha$, $\mu_5 = \beta$, the global minimum of the TDP (37) lies at the point, e.g., $(M = M_0, \Delta = 0)$. It means that for such fixed values of the parameters the chiral symmetry breaking (CSB) phase is realized. Then it follows from the duality invariance of the unrenormalized TDP with respect to the transformation \mathcal{D} (20) that the permutation of the coupling constant and chemical potential values⁶ (i.e. at $g_1 = B$, $g_2 = A$ and $\mu = \beta$, $\mu_5 = \alpha$) moves the global minimum of the TDP $\Omega^{\text{ren}}(M, \Delta)$ to the point $(M = 0, \Delta = M_0)$, and the superconducting (SC) phase is originated (and vice versa). This is the so-called duality correspondence between CSB and SC phases in the framework of the model under consideration. Hence, the knowledge of a phase of the model (1) at some fixed values of external free model parameters g_1 , g_2 , μ , μ_5 is sufficient to understand what phase is realized at rearranged values of external

⁶It is evident that the duality transformation \mathcal{D} for the renormalized TDP (37) means $g_1 \leftrightarrow g_2$, $M \leftrightarrow \Delta$, $\mu \leftrightarrow \mu_5$, under which this TDP is invariant.

parameters, $g_1 \leftrightarrow g_2$, $\mu \leftrightarrow \mu_5$. Moreover, we would like to emphasize once again that there exists an equality of the order parameters (condensates), which characterize both the initial phase and the phase corresponding to rearranged external parameters. In other words the chiral condensate of the CSB phase at fixed g_1 , g_2 , μ , μ_5 is equal to the SC condensate of the phase at $g_1 \leftrightarrow g_2$, $\mu \leftrightarrow \mu_5$ (and vice versa).

The duality transformation (20) of the TDP can also be applied to the arbitrary phase portrait of the model (see below). In particular, it is clear that if we have a most general phase portrait, i.e. the correspondence between any point (g_1, g_2, μ, μ_5) of the four-dimensional space of external parameters and possible model phases (CSB, SC and symmetric phase), then under the duality transformation ($g_1 \leftrightarrow g_2$, $\mu \leftrightarrow \mu_5$, CSB \leftrightarrow SC) this phase portrait is mapped to itself, i.e. the most general phase portrait is self-dual. In practice, usually, there are constraints on the model parameters. As a result, if the constraint is dually (non)invariant, then the phase portrait is also dually (non)invariant.

Below, we will use the dual symmetry of the TDP in order to explain and construct the phase structure of the model in different particular cases.

A. Self-dual phase portraits

First of all, taking into account the duality correspondence between CSB and SC, let us determine its characteristic features and then find (analytically and numerically) the phase structure of the model (1) in two particular cases, (i) $\mu = \mu_5$ and (ii) $g_1 = g_2$. It is evident that both of these constraints, (i) and (ii), are invariant with respect to the duality transformation $g_1 \leftrightarrow g_2$, $\mu \leftrightarrow \mu_5$. Hence, the corresponding phase portraits should be self-dual (a more detailed explanation of this fact is presented in the next subsection). In case (i) we want to study the (g_1, g_2) phase portrait, whereas in case (ii) the (μ, μ_5) phase portrait. It follows from the duality correspondence that in case (i) the region of the CSB phase is a mirror image of the SC phase with respect to the line $g_1 = g_2$ of the (g_1, g_2) plane. However, in case (ii) the regions of these phases are arranged mirror symmetrically with respect to the line $\mu = \mu_5$ of the plane (μ, μ_5) .

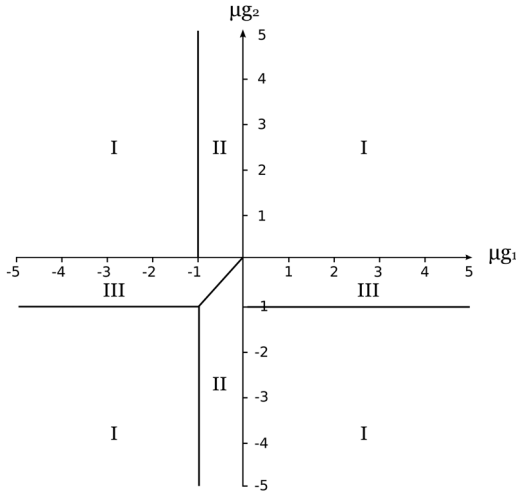


FIG. 2. The (g_1, g_2) -phase portrait of the model at fixed chemical potentials, such that $\mu = \mu_5$. The notations I, II and III are the same as in Fig. 1.

Of course, the specific form of the CSB and SC areas depends on the values of the external parameters. For example, at $\mu = \mu_5 = 0$ the phase structure is presented in Fig. 1. [Note that in order to obtain this phase portrait it is sufficient to investigate the behavior of the global minimum point of the TDP $V^{\text{ren}}(M, \Delta)$ (33) vs the coupling constants g_1 and g_2 .] However, at fixed $\mu = \mu_5 > 0$ the phase structure is presented in Fig. 2, where one can see the mirror symmetrical arrangement of phases II and III with respect to the line $g_1 = g_2$.

In Figs 3 and 4 the (μ, μ_5) -phase portraits of the model (1) are presented at fixed $g_1 = g_2 \equiv g > 0$ and fixed

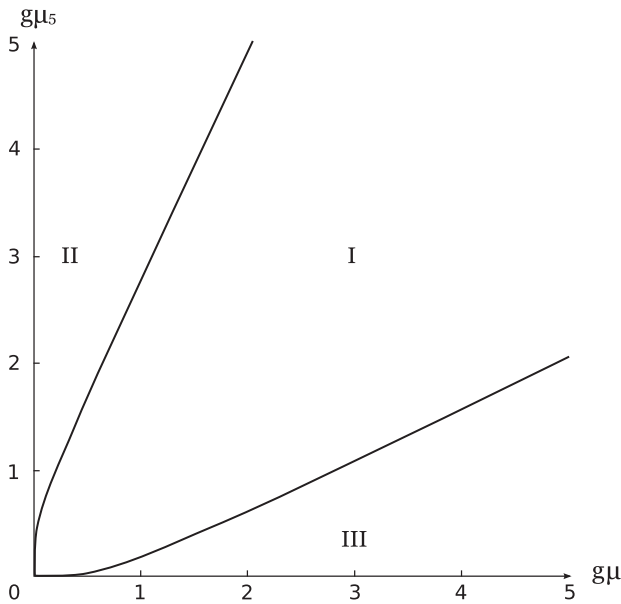


FIG. 3. The (μ, μ_5) -phase portrait of the model at fixed coupling constants, such that $g_1 = g_2 \equiv g > 0$. The notations I, II and III are the same as in Fig. 1.

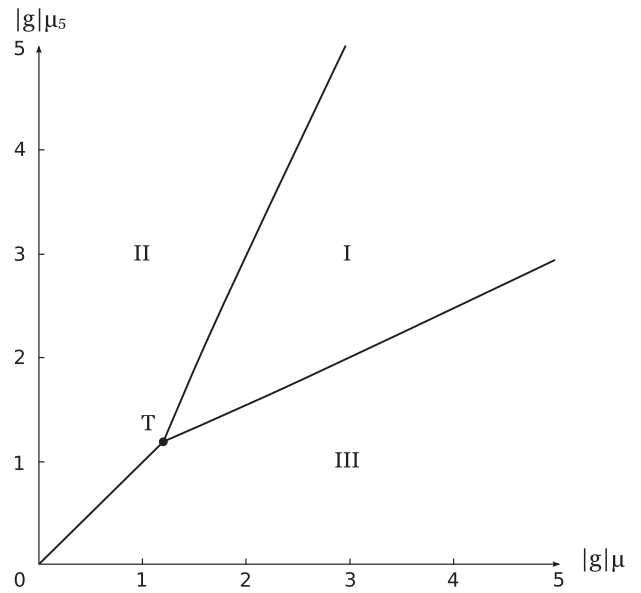


FIG. 4. The (μ, μ_5) -phase portrait of the model at fixed coupling constants, such that $g_1 = g_2 \equiv g < 0$. The notations I, II and III are the same as in Fig. 1. The letter T denotes a triple point.

$g_1 = g_2 \equiv g < 0$, respectively. The CSB and SC phases in these figures are arranged, as defined above, symmetrically with respect to the line $\mu = \mu_5$ of the (μ, μ_5) plane. If $g > 0$, then at the points of the boundary of phase I in Fig. 3, the second order phase transition takes place. In this case it is possible to give exact analytical expressions for the boundaries of region I in Fig. 3. Indeed, the global minimum point M_0 of the TDP (40) is defined by the equation $\partial F_1(M)/\partial M \equiv Mf(M) = 0$. Inside region II of Fig. 3 we have $M_0 > 0$ and $f(M_0) = 0$. However, on the boundary between phases I and II one can see that $M_0 = 0$ and, moreover, that $f(0) = 0$. It is the last relation that defines the boundary equation between I and II phases. This equation looks like

$$\mu = \mu_5 \exp\left(-\frac{1}{g\mu_5} - 1\right). \quad (42)$$

In a similar way it is possible to find the equation for the boundary between I and III phases of Fig. 3:

$$\mu_5 = \mu \exp\left(-\frac{1}{g\mu} - 1\right). \quad (43)$$

In contrast, on the boundary of phase I of Fig. 4, a phase transition of the first order takes place. Since on the boundary between II and III phases of this figure we also have a first order phase transitions, it is clear that point T of the phase portrait Fig. 4 is a so-called triple point, i.e. the point where three different phases, I, II and III, coexist. The triple point T of Fig. 4 corresponds to the chemical potential values $\mu_T = \mu_{5T} \approx 1.2/|g|$.

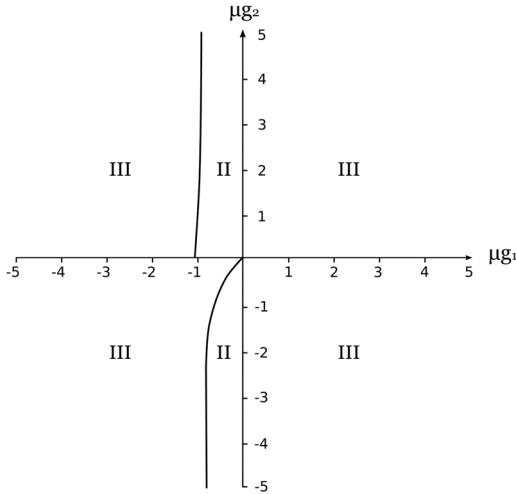


FIG. 5. The (g_1, g_2) -phase portrait of the model at arbitrary fixed nonzero value μ and at $\mu_5 = 0$. The notations I, II and III are the same as in Fig. 1.

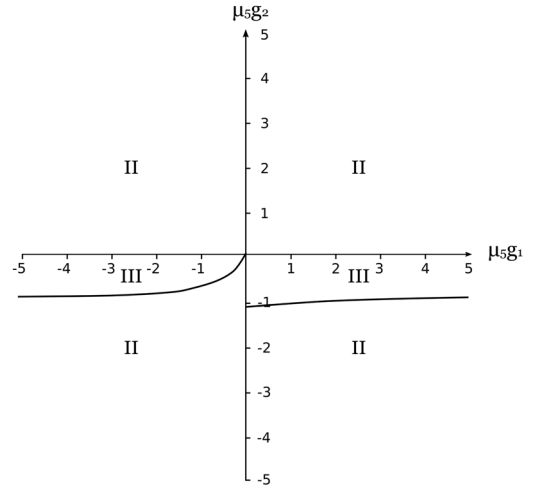


FIG. 6. The (g_1, g_2) -phase portrait of the model at arbitrary fixed nonzero value μ_5 and at $\mu = 0$. The notations I, II and III are the same as in Fig. 1.

B. Non-self-dual phase portraits and their dual transformations

1. The cases $\mu_5 = 0, \mu \neq 0$ and $\mu = 0, \mu_5 \neq 0$

In these two particular cases the restrictions on the external model parameters are already not dually invariant, so the corresponding (g_1, g_2) -phase portraits are not self-dual. However, as we shall see, each of these two phase portraits is a dual mapping of another one.

The (g_1, g_2) -phase structure of the model at arbitrary fixed nonzero value of μ (of μ_5) and at $\mu_5 = 0$ (at $\mu = 0$) is presented in Fig. 5 (in Fig. 6). Let us first compare Figs. 1 and 5. It is easy to see that if $g_1 > 0, g_2 > 0$ and $\mu = \mu_5 = 0$, then the system is in the symmetric phase I (see Fig. 1). However, an arbitrary small nonzero value of the chemical potential μ induces (at $\mu_5 = 0$) in this case the superconducting phase III (see Fig. 5 as well as Fig. 3 for the particular case $g_1 = g_2 > 0$). Note that there is a very simple explanation of this fact, which is based on the symmetry breaking mechanism (ii) (see the end of Sec. III A), i.e. on the Cooper instability of a Fermi surface. Indeed, at $g_1 > 0, g_2 > 0$ and $\mu > 0$ we have a nonzero particle density (see, e.g., in [12]), so there is a Fermi sea of particles with energies less or equal to μ (Fermi surface). Evidently, in this case there is no energy cost for creating a pair of particles with opposite momenta just over the Fermi surface. Then, due to an arbitrary weak attraction between these particles ($0 < G_2 < G_c$), the Cooper pair is formed and $U_V(1)$ symmetry is spontaneously broken, as a result of Bose-Einstein condensation of Cooper pairs. Since in the energy spectrum of fermions the gap $\Delta \neq 0$ appears, rather small external forces are not able to destroy the superconducting condensate and it is a stable one.

If $g_1 > 0, g_2 < 0$, then we have a rather strong interaction in the SC channel, i.e. $G_2 > G_c$ and $G_1 < G_c$. As a

result, in this case both at $\mu = 0$ and $\mu > 0$ the dynamical symmetry breaking mechanism (i) (see the end of Sec. III A) plays a decisive role in the forming of SC phenomenon.

Now suppose that $g_1 < 0$ and $g_2 \neq 0$, i.e. $G_1 > G_c$. [In particular, the point (g_1, g_2) might belong to phase II of Fig. 1, where chiral symmetry is spontaneously broken at $\mu = 0, \mu_5 = 0$.] Then it follows from Fig. 5 that at $\mu_5 = 0$ there is a sufficiently high critical value $\mu_c \geq 0$ of the chemical potential μ , such that at $\mu > \mu_c$ the point $(\mu g_1, \mu g_2)$ will certainly be in one of the regions III of Fig. 5. Hence, the growth (at $\mu_5 = 0$) of the chemical potential μ leads to the appearance of the SC phase in model (1) at arbitrary $g_1 \neq 0$ and $g_2 \neq 0$.⁷ Analyzing in the same manner Fig. 6, we see that in the opposite case when $\mu = 0$ but $\mu_5 > 0$, the growth (at $\mu = 0$) of the chiral chemical potential μ_5 leads to the appearance of the CSB phase in model (1) at arbitrary fixed $g_1 \neq 0$ and $g_2 \neq 0$.

Indeed, these two properties of the model (1), i.e. (A) the appearance of the SC at $\mu_5 = 0$ and at growing values of μ as well as (B) the appearance of the CSB at $\mu = 0$ and at growing values of μ_5 (in these two cases it is supposed that $g_1 \neq 0$ and $g_2 \neq 0$ are fixed), are dually connected (or dually conjugated). To understand this fact, it is necessary to emphasize once again that (A) follows from the phase portrait of Fig. 5, whereas (B) is the consequence of the phase portrait presented in Fig. 6. Now we will demonstrate that under the dual transformation \mathcal{D} ($g_1 \leftrightarrow g_2, \mu \leftrightarrow \mu_5, \text{CSB} \leftrightarrow \text{SC}$) the phase portrait of Fig. 5 is transformed into the phase portrait of Fig. 6 (and vice versa).

⁷This was the main result of the paper [12], where the competition between CSB and SC was studied in the $(2+1)$ -dimensional 4F model at $\mu \neq 0, \mu_5 = 0$ without duality correspondence.

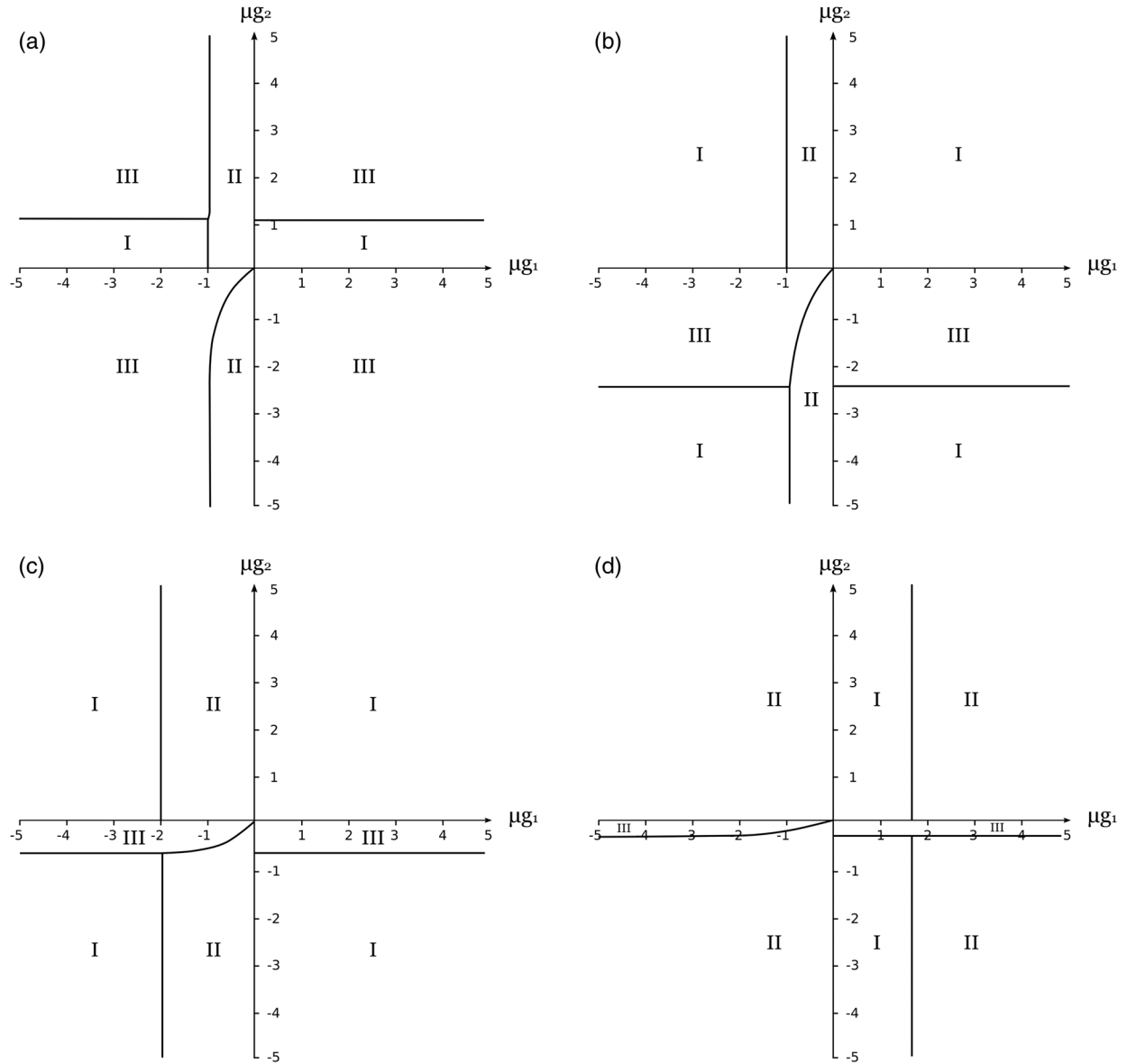


FIG. 7. The (g_1, g_2) -phase portrait of the model at arbitrary fixed values of μ and for different values of the chiral chemical potential μ_5 . (a) The case $\mu_5 = 0.2\mu$. (b) The case $\mu_5 = 0.7\mu$. (c) The case $\mu_5 = 1.5\mu$. (d) The case $\mu_5 = 2.5\mu$. We use the same designations of the phases as in Fig. 1.

Note that the application of \mathcal{D} to Fig. 5 can be divided into three more simple steps. (i) First, under permutation $M \leftrightarrow \Delta$ in (20) we have renaming of the phases, i.e. $\text{II} \leftrightarrow \text{III}$. [For example, in this case the global minimum point of the CSB phase, i.e. the point $(M_0, 0)$, is transformed into the point $(0, M_0)$ and, as a result, the CSB phase is transformed into the SC phase.] (ii) Second, performing the $\mu \leftrightarrow \mu_5$ and $g_1 \leftrightarrow g_2$ transformations in Fig. 5, we rename the coordinate axes of the figure (after the duality transformation we have along the vertical axis the quantity $\mu_5 g_1$ and along the horizontal one the quantity $\mu_5 g_2$) and change its caption or external conditions, at which the phase portrait is obtained. (In our case the caption $\mu_5 = 0$ with μ being an arbitrary fixed quantity for

Fig. 5 is replaced by $\mu = 0$ with μ_5 being an arbitrary fixed quantity, i.e. we obtain the caption for Fig. 6.) (iii) Finally, it is necessary to direct the axis corresponding to the quantity $\mu_5 g_1$ (to the quantity $\mu_5 g_2$) horizontally (vertically). As a result of this dual transformation of the Fig. 5 we obtain just Fig. 6.

In a similar way it is possible to apply the duality transformation \mathcal{D} to each of the phase portraits presented in Figs. 1–4. As a result, we see that these phase structures are self-dual. In the next subsections we obtain the phase structure of the model in other more general non-self-dual cases, i.e. the (g_1, g_2) -phase portraits at arbitrary fixed values of chemical potentials and the (μ, μ_5) -phase portraits at arbitrary fixed values of the coupling constants.

2. The (g_1, g_2) -phase structure at some nontrivial values of μ and μ_5

Let us now fix the fermion number chemical potential $\mu \neq 0$ and consider how the (g_1, g_2) -phase portrait of the model is evolved vs the chiral chemical potential μ_5 . This phase portrait at $\mu_5 = 0$ is presented in Fig. 5. In Fig. 7 we have drawn several (g_1, g_2) -phase portraits at different relations between μ_5 and μ , (a) $\mu_5 = 0.2\mu$, (b) $\mu_5 = 0.7\mu$, (c) $\mu_5 = 1.5\mu$, (d) $\mu_5 = 2.5\mu$. Analyzing Figs. 5 and 7, we see the following phase evolution of the system vs μ_5 at fixed $\mu \neq 0$. At $\mu_5 = 0$ the SC phase III fills almost the whole $(\mu g_1, \mu g_2)$ plane (see Fig. 5). It means that at arbitrary fixed $g_1 \neq 0$ and $g_2 \neq 0$ we have superconductivity in the system at sufficiently high values of μ (see Sec. IV B 1). If μ_5 begins to grow, then for a lot of (g_1, g_2) points there might occur a restoration of the initial symmetry (the symmetrical phase I arises) in the model. However, the further growth of μ_5 leads to the final appearance of the CSB phase. It is the general property of the chiral chemical potential μ_5 , which promotes the chiral symmetry breaking in the system.

Since the above-mentioned constraints (a),..., (d) at which Fig. 7 were drawn are not invariant under the duality transformation \mathcal{D} (20), we would like to note that the phase portraits of Fig. 7 are not self-dual. In this case the possible duality transformation (see Sec. IV B 1) of Fig. 7 might result in the set of four phase portraits, which are a good illustration of the evolution of the model phase structure vs the particle number chemical potential μ at arbitrary fixed $\mu_5 \neq 0$. It is straightforwardly clear from the dual mapping of Fig. 7 that at arbitrary fixed values of $\mu_5 > 0$ and $g_1 \neq 0$, $g_2 \neq 0$ we have in the system the appearance of superconductivity at sufficiently high μ . This property is dually conjugated to the appearing of the CSB phase at sufficiently high values of μ_5 , which is a consequence of the phase portraits Fig. 7 (see the above consideration).

3. The (μ, μ_5) -phase structure at some nontrivial relations between g_1 and g_2

We have already considered the (μ, μ_5) -phase structure of the model in the case of dually symmetrical constraints on the coupling constants, i.e. when $g_1 = g_2$ (see Figs. 3 and 4). In the present section, special attention is paid to a more general case when $g_1 \neq g_2$. Here we construct (μ, μ_5) -phase portraits of the model for qualitatively different representative relations between g_1 and g_2 . Namely, we fix in each of the regions of Fig. 1 some representative (g_1, g_2) point and draw a corresponding (μ, μ_5) -phase diagram. [Note that due to a duality symmetry of the model, it is sufficient to reduce the number of the representative (g_1, g_2) points to three.]

In Fig. 8 the (μ, μ_5) -phase portrait corresponds to arbitrary fixed $g_1 > 0$ and $g_2 = 0.2g_1$ [it is clear that at $\mu = \mu_5 = 0$ the point $(g_1, g_2 = 0.2g_1)$ lies in the symmetrical region I of Fig. 1]. On the phase boundaries of this figure there are phase transitions of the second order. In Fig. 9 the (μ, μ_5) -phase portrait corresponds to arbitrary fixed $g_1 < 0$ and $g_2 = -2g_1$ [in this case at $\mu = \mu_5 = 0$ the point $(g_1, g_2 = -2g_1)$ lies in

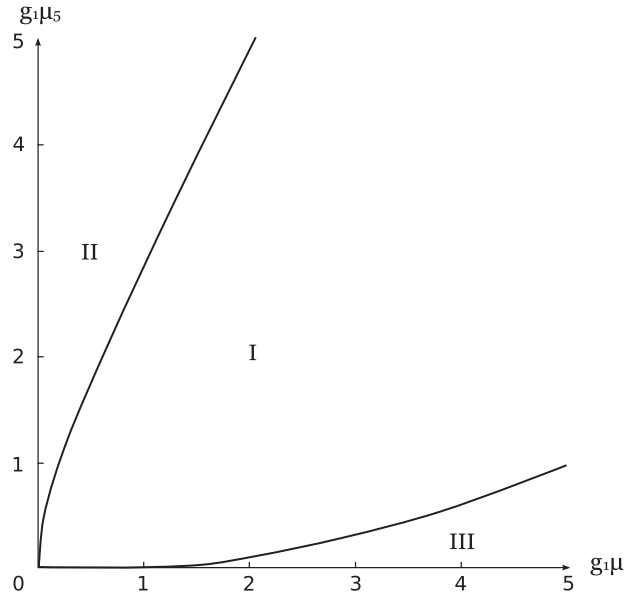


FIG. 8. The (μ, μ_5) -phase portrait of the model at arbitrary fixed $g_1 > 0$ and $g_2 = 0.2g_1$. The notations I, II and III are the same as in Fig. 1.

the CSB region II of Fig. 1]. Finally, in Fig. 10 the (μ, μ_5) -phase portrait corresponds to arbitrary fixed $g_1 < 0$ and $g_2 = 0.5g_1$ [in this case at $\mu = \mu_5 = 0$ the point $(g_1, g_2 = 0.5g_1)$ lies in the SC region III of Fig. 1]. To obtain the (μ, μ_5) -phase portraits of the model when the point (g_1, g_2) is fixed in the two remaining areas of Fig. 1, it is enough to perform the dual mapping of Figs. 9 and 10.

In Figs. 9 and 10 all phase boundaries are the curves of the first order phase transitions, so the point T on these

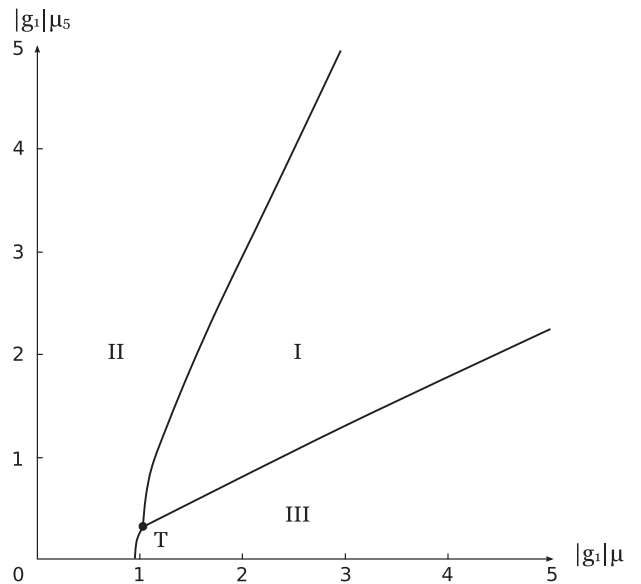


FIG. 9. The (μ, μ_5) -phase portrait of the model at arbitrary fixed $g_1 < 0$ and $g_2 = -2g_1$. The notations I, II and III are the same as in Fig. 1. The letter T denotes a triple point, $\mu_T \approx 1/|g_1|$, $\mu_{5T} \approx 0.3/|g_1|$.

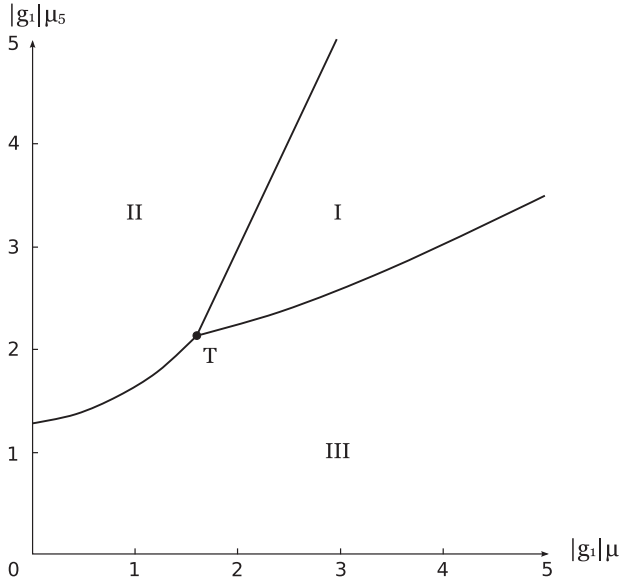


FIG. 10. The (μ, μ_5) -phase portrait of the model at arbitrary fixed $g_1 < 0$ and $g_2 = 0.5g_1$. Notations I, II and III are the same as in Fig. 1. The letter T denotes a triple point, $\mu_T \approx 1.6/|g_1|$, $\mu_{5T} \approx 2.2/|g_1|$.

figures is a triple point, where three phases coexist. The main conclusion from Figs. 8–10 is that the growth of μ_5 (the growth of μ) induces the chiral symmetry breaking (induces the superconductivity).

V. SUMMARY AND CONCLUSIONS

In this paper, the duality correspondence phenomenon between CSB and SC, which was found earlier in $(1+1)$ -dimensional 4F theories [26–29], is demonstrated to take place also in the framework of the $(2+1)$ -dimensional 4F model (1). (An alternative 4F model with other dually conjugated chiral and superconducting channels of interaction is considered in Appendix B.) It contains both fermion-antifermion (with G_1 a bare coupling constant) and difermion (with G_2 a bare coupling constant) interaction channels and two kinds of chemical potentials, μ, μ_5 . The duality property of the model means that its thermodynamic potential $\Omega(M, \Delta)$ (17) is invariant under the duality transformation (20). As a result, we have established the duality correspondence between CSB and SC phases of the model (1) (as well as of the alternative model of Appendix B). Let us suppose, e.g., that for some fixed set (g_1, g_2, μ, μ_5) of external parameters [the coupling constants g_1 and g_2 are connected with bare couplings $G_{1,2}$ by the relation (31)] the chiral symmetry breaking phase is realized in the model. Then for rearranged values of external parameters, $g_1 \leftrightarrow g_2$, $\mu \leftrightarrow \mu_5$ [or for dually conjugated set (g_2, g_1, μ_5, μ)], we have the so-called dually conjugated superconducting phase (and vice versa). Moreover, it must be emphasized that the chiral condensate of the CSB phase, realized for the set (g_1, g_2, μ, μ_5) , is equal

to the superconducting condensate of the dually conjugated SC phase, corresponding to the set of external parameters with $g_1 \leftrightarrow g_2$, $\mu \leftrightarrow \mu_5$ (and vice versa). In this way, it is sufficient to have the information about the ground state of the initial phase, which is realized for the set (g_1, g_2, μ, μ_5) , in order to determine the properties of the ground state of the dually conjugated phase, corresponding to the rearranged external parameter set (g_2, g_1, μ_5, μ) .

In order to study the role and influence of the duality property on the phase structure of the model, for comparison and illustrations, we have demonstrated a variety of phase portraits in the (μ, μ_5) - and (g_1, g_2) planes. In particular, if the constraint, under which we obtain a phase portrait, is dually invariant, i.e. at $\mu = \mu_5$ or at $g_1 = g_2$, then we have a self-dual phase diagram (see, e.g., Figs. 1–4). The self-dual phase portrait is mapped into itself under the duality transformation (it is introduced in Sec. IV B 1), and its most characteristic feature is the mirror symmetrical arrangement of the CSB and SC phases with respect to the line $\mu = \mu_5$ (or $g_1 = g_2$) of the phase diagram.

We have also presented a series of non-self-dual phase portraits, which do not transform into themselves under the duality mapping (see Figs. 5–10). The results obtained lead to the conclusion that the growth of the chiral chemical potential μ_5 promotes the chiral symmetry breaking,⁸ whereas particle number chemical potential μ induces superconductivity in the system (see also in [12]).

We hope that our investigations may shed some new light on physical effects in planar systems like high-temperature superconductors or graphene.

APPENDIX A: ALGEBRA OF THE γ MATRICES IN THE CASE OF $SO(2,1)$ GROUP

The two-dimensional irreducible representation of the $(2+1)$ -dimensional Lorentz group $SO(2,1)$ is realized by the following 2×2 $\tilde{\gamma}$ -matrices:

$$\begin{aligned} \tilde{\gamma}^0 &= \sigma_3 = \begin{pmatrix} 1 & 0 \\ 0 & -1 \end{pmatrix}, & \tilde{\gamma}^1 &= i\sigma_1 = \begin{pmatrix} 0 & i \\ i & 0 \end{pmatrix}, \\ \tilde{\gamma}^2 &= i\sigma_2 = \begin{pmatrix} 0 & 1 \\ -1 & 0 \end{pmatrix}, \end{aligned} \quad (A1)$$

acting on two-component Dirac spinors. They have the properties

$$\begin{aligned} \text{Tr}(\tilde{\gamma}^\mu \tilde{\gamma}^\nu) &= 2g^{\mu\nu}; & [\tilde{\gamma}^\mu, \tilde{\gamma}^\nu] &= -2ie^{\mu\nu\alpha} \tilde{\gamma}_\alpha; \\ \tilde{\gamma}^\mu \tilde{\gamma}^\nu &= -ie^{\mu\nu\alpha} \tilde{\gamma}_\alpha + g^{\mu\nu}, \end{aligned} \quad (A2)$$

⁸The properties of the simplest $(2+1)$ -dimensional GN and $(3+1)$ -dimensional NJL models under the influence of μ_5 were studied, correspondingly, in the recent papers [40] and [32]. It was shown there that the chiral chemical potential μ_5 plays a role of the catalyst of dynamical chiral symmetry breaking.

where $g^{\mu\nu} = g_{\mu\nu} = \text{diag}(1, -1, -1)$, $\tilde{\gamma}_\alpha = g_{\alpha\beta}\tilde{\gamma}^\beta$, $\varepsilon^{012} = 1$. There is also the relation

$$\text{Tr}(\tilde{\gamma}^\mu\tilde{\gamma}^\nu\tilde{\gamma}^\alpha) = -2i\varepsilon^{\mu\nu\alpha}. \quad (\text{A3})$$

Note that the definition of chiral symmetry is slightly unusual in $(2+1)$ -dimensions [spin is here a pseudoscalar rather than a (axial) vector]. The formal reason is simply that there exists no other 2×2 matrix anticommuting with the Dirac matrices $\tilde{\gamma}^\nu$ which would allow the introduction of a γ^5 -matrix in the irreducible representation. The important concept of ‘‘chiral’’ symmetries and their breakdown by mass terms can nevertheless be realized also in the framework of $(2+1)$ -dimensional quantum field theories by considering a four-component reducible representation for Dirac fields. In this case the Dirac spinors ψ have the following form:

$$\psi(x) = \begin{pmatrix} \tilde{\psi}_1(x) \\ \tilde{\psi}_2(x) \end{pmatrix}, \quad (\text{A4})$$

with $\tilde{\psi}_1, \tilde{\psi}_2$ being two-component spinors. In the reducible four-dimensional spinor representation one deals with $4 \times 4\gamma$ -matrices: $\gamma^\mu = \text{diag}(\tilde{\gamma}^\mu, -\tilde{\gamma}^\mu)$, where $\tilde{\gamma}^\mu$ are given in (A1). One can easily show that $(\mu, \nu = 0, 1, 2)$:

$$\begin{aligned} \text{Tr}(\gamma^\mu\gamma^\nu) &= 4g^{\mu\nu}; & \gamma^\mu\gamma^\nu &= \sigma^{\mu\nu} + g^{\mu\nu}; \\ \sigma^{\mu\nu} &= \frac{1}{2}[\gamma^\mu, \gamma^\nu] = \text{diag}(-i\varepsilon^{\mu\nu\alpha}\tilde{\gamma}_\alpha, -i\varepsilon^{\mu\nu\alpha}\tilde{\gamma}_\alpha). \end{aligned} \quad (\text{A5})$$

In addition to the Dirac matrices γ^μ ($\mu = 0, 1, 2$) there exist two other matrices, γ^3 and γ^5 , which anticommute with all γ^μ ($\mu = 0, 1, 2$) and with themselves

$$\gamma^3 = i \begin{pmatrix} 0, & -I \\ I, & 0 \end{pmatrix}, \quad \gamma^5 = \begin{pmatrix} 0, & I \\ I, & 0 \end{pmatrix}, \quad (\text{A6})$$

with I being the unit 2×2 matrix. It is obvious that $\gamma^3 = \gamma^0\gamma^1\gamma^2\gamma^5$ and $\gamma^5 = -\gamma^0\gamma^1\gamma^2\gamma^3$.

APPENDIX B: ALTERNATIVE 4F (2 + 1)-DIMENSIONAL MODEL WITH DUAL SYMMETRY BETWEEN OTHER CSB AND SC CHANNELS

Each of the matrices γ^3 and γ^5 (see Appendix A) can be selected as a generator for the corresponding $U_{\gamma^3}(1)$ and $U_{\gamma^5}(1)$ chiral group of spinor field transformations. For example, the Lagrangian (1) is invariant with respect to $U_{\gamma^5}(1)$ such that $\psi_k(x) \rightarrow \exp(i\alpha\gamma^5)\psi_k(x)$. Alternatively, it is possible to construct a 4F model with fermion-antifermion and superconducting channels, symmetric under $U_{\gamma^3}(1)$ continuous chiral transformations, $\psi_k(x) \rightarrow \exp(i\alpha\gamma^3)\psi_k(x)$ ($k = 1, \dots, N$). Its Lagrangian, e.g., reads

$$\begin{aligned} L_{\gamma^3} &\equiv L_{\gamma^3}(G_1, G_2; \mu, \mu_3) \\ &= \sum_{k=1}^N \bar{\psi}_k[\gamma^\nu i\partial_\nu + \mu\gamma^0 + \mu_3\gamma^0\gamma^3]\psi_k + \frac{G_1}{N}(\widetilde{4F})_{ch} \\ &\quad + \frac{G_2}{N}(\widetilde{4F})_{sc}, \end{aligned} \quad (\text{B1})$$

where the four-fermion structures $(\widetilde{4F})_{ch}$ and $(\widetilde{4F})_{sc}$ are used,

$$\begin{aligned} (\widetilde{4F})_{ch} &= \left(\sum_{k=1}^N \bar{\psi}_k\psi_k \right)^2 + \left(\sum_{k=1}^N \bar{\psi}_k i\gamma^3\psi_k \right)^2, \\ (\widetilde{4F})_{sc} &= \left(\sum_{k=1}^N \psi_k^T \tilde{C}\psi_k \right) \left(\sum_{j=1}^N \bar{\psi}_j \tilde{C}\bar{\psi}_j^T \right). \end{aligned} \quad (\text{B2})$$

Here $\tilde{C} = iC\gamma^3\gamma^5$ and μ is the usual particle number chemical potential [as in (1)]. Since this Lagrangian is invariant under $U_{\gamma^3}(1)$, there exist a corresponding conserved density of chiral charge $n_3 = \sum_{k=1}^N \bar{\psi}_k\gamma^0\gamma^3\psi_k$ as well as its thermodynamically conjugate quantity, the chiral (or axial) chemical potential μ_3 . Note that in the framework of the model (B1) there is also the duality between chiral and superconducting channels of interaction, i.e. between $(\widetilde{4F})_{ch}$ and $(\widetilde{4F})_{sc}$ four-fermion structures (B2). Indeed, performing in (B1) and (B2) the modified Pauli-Gürsey transformation of spinor fields,

$$\widetilde{\text{PG}}: \psi_k(x) \rightarrow \frac{1}{2}(1 - \gamma^3)\psi_k(x) + \frac{1}{2}(1 + \gamma^3)\tilde{C}\bar{\psi}_k^T(x), \quad (\text{B3})$$

we see that

$$\begin{aligned} (\widetilde{4F})_{ch} &\stackrel{\widetilde{\text{PG}}}{\leftrightarrow} (\widetilde{4F})_{sc}, \\ L_{\gamma^3}(G_1, G_2; \mu, \mu_3) &\stackrel{\widetilde{\text{PG}}}{\leftrightarrow} L_{\gamma^3}(G_2, G_1; -\mu_3, -\mu). \end{aligned} \quad (\text{B4})$$

The relations (B4) are the basis for the duality invariance of the thermodynamic potential of the model (B1).

To verify this, one can use the way of Sec. II. Indeed, the semibosonized version of Lagrangian (B1) that contains only quadratic powers of fermionic fields and auxiliary bosonic fields $\sigma(x)$, $\tilde{\pi}(x)$, $\tilde{\Delta}(x)$ and $\tilde{\Delta}^*(x)$ has the following form:

$$\begin{aligned} \mathcal{L}_{\gamma^3} &= \bar{\psi}_k[\gamma^\nu i\partial_\nu + \mu\gamma^0 + \mu_3\gamma^0\gamma^3 - \sigma - i\gamma^3\tilde{\pi}]\psi_k - \frac{N(\sigma^2 + \tilde{\pi}^2)}{4G_1} \\ &\quad - \frac{N}{4G_2}\tilde{\Delta}^*\tilde{\Delta} - \frac{\tilde{\Delta}^*}{2}[\psi_k^T \tilde{C}\psi_k] - \frac{\tilde{\Delta}}{2}[\bar{\psi}_k \tilde{C}\bar{\psi}_k^T] \end{aligned} \quad (\text{B5})$$

[in (B5) and below the summation over $k = 1, \dots, N$ is implied]. On Euler-Lagrange equations for bosonic fields,

$$\begin{aligned}\sigma(x) &= -2\frac{G_1}{N}(\tilde{\psi}_k\psi_k), \quad \tilde{\pi}(x) = -2\frac{G_1}{N}(\tilde{\psi}_k i\gamma^3\psi_k), \\ \tilde{\Delta}(x) &= -2\frac{G_2}{N}(\psi_k^T \tilde{C}\psi_k), \quad \tilde{\Delta}^*(x) = -2\frac{G_2}{N}(\tilde{\psi}_k \tilde{C}\tilde{\psi}_k^T),\end{aligned}\quad (\text{B6})$$

the semibosonized Lagrangian (B5) is equivalent to the 4F Lagrangian (B1). Note also that the bosonic

$$\int d^3x \Omega_{\gamma^3}(M, \Delta) = \int d^3x \left(\frac{M^2}{4G_1} + \frac{\Delta^2}{4G_2} \right) + \frac{i}{N} \ln \left(\int \prod_{l=1}^N [d\tilde{\psi}_l] [d\psi_l] \exp \left(i \int d^3x \left[\tilde{\psi}_k D_{\gamma^3} \psi_k - \frac{\Delta}{2} (\psi_k^T \tilde{C}\psi_k) - \frac{\Delta}{2} (\tilde{\psi}_k \tilde{C}\tilde{\psi}_k^T) \right] \right) \right), \quad (\text{B7})$$

where $D_{\gamma^3} = \gamma^\rho i\partial_\rho + \mu\gamma^0 + \mu_3\gamma^0\gamma^3 - M$. In writing down this expression, we used the same arguments that were used in the derivation of the thermodynamic potential in the framework of the model (1) [see the derivation of (16) in Sec. II]. Path integration in the expression (B7) is evaluated in Appendix C so we have for the TDP (B7) the following expression:

$$\begin{aligned}\Omega_{\gamma^3}(M, \Delta) &= \frac{M^2}{4G_1} + \frac{\Delta^2}{4G_2} \\ &+ \frac{i}{2} \int \frac{d^3p}{(2\pi)^3} \ln[\tilde{\lambda}_1(p)\tilde{\lambda}_2(p)\tilde{\lambda}_3(p)\tilde{\lambda}_4(p)],\end{aligned}\quad (\text{B8})$$

where $\tilde{\lambda}_{1,\dots,4}(p)$ are presented in (C11). Comparing this thermodynamic potential with the TDP $\Omega(M, \Delta)$ (17) of the model (1), we see that

$$\Omega_{\gamma^3}(M, \Delta) = \Omega(M, \Delta)|_{\mu_5 \rightarrow \mu_3}. \quad (\text{B9})$$

As a result, it is clear that the TDP $\Omega_{\gamma^3}(M, \Delta)$ of the 4F model (B1) is invariant under the following dual transformation:

$$G_1 \leftrightarrow G_2, \quad M \leftrightarrow \Delta, \quad \mu \leftrightarrow \mu_3. \quad (\text{B10})$$

Furthermore, to find phase portraits of model (B1), it is sufficient to perform in all Figs. 1–10 the replacement $\mu_5 \rightarrow \mu_3$.

APPENDIX C: THE PATH INTEGRATION OVER ANTICOMMUTING FIELDS

Let us calculate the following path integral over anticommuting four-component Dirac spinor fields $\psi(x)$, $\tilde{\psi}(x)$:

$$\begin{aligned}I_\Gamma &= \int [d\tilde{\psi}] [d\psi] \exp \left(i \int d^3x \left[\tilde{\psi} D_\Gamma \psi - \frac{\Delta}{2} (\psi^T C \Gamma \psi) \right. \right. \\ &\quad \left. \left. - \frac{\Delta}{2} (\tilde{\psi} C \Gamma \tilde{\psi}^T) \right] \right),\end{aligned}\quad (\text{C1})$$

fields $\tilde{\Delta}(x)$ and $\tilde{\Delta}^*(x)$ are pseudoscalars, whereas $\sigma(x)$ and $\tilde{\pi}(x)$ are scalars with respect to parity transformation (9).

Then, the thermodynamic potential $\Omega_{\gamma^3}(M, \Delta)$, which describes the ground state of the model (B1)–(B5), is analogously defined by the following relation (for convenience, we omit here and below the tilde in fields):

where C is the charge conjugation matrix, $C = \gamma^2$. Since in the 4×4 spinor space the product matrix $C\Gamma$ should be an antisymmetric one, it is clear that the Γ matrix in (C1) might be, e.g., the unit matrix $\mathbf{1}_s$ in the spinor space or $\Gamma = i\gamma^3\gamma^5$ (for notations see Appendix A), etc. Note in addition that at $\Gamma = \mathbf{1}_s$ and $D_\Gamma = D$ [see in (16)] the integral I_Γ is equal to the argument of the ln-function in the formula (16) in the particular case $N = 1$, whereas at $\Gamma = i\gamma^3\gamma^5$ and $D_\Gamma = D_{\gamma^3}$ [see (B7)] the integral I_Γ is equal to the argument of the ln-function in the formula (B7) also in the particular case $N = 1$. Recall, there are general Gaussian path integrals [41]:

$$\begin{aligned}\int [d\psi] \exp \left(i \int d^3x \left[-\frac{1}{2} \psi^T A \psi + \eta^T \psi \right] \right) \\ = (\det(A))^{1/2} \exp \left(-\frac{i}{2} \int d^3x [\eta^T A^{-1} \eta] \right),\end{aligned}\quad (\text{C2})$$

$$\begin{aligned}\int [d\tilde{\psi}] \exp \left(i \int d^3x \left[-\frac{1}{2} \tilde{\psi} A \tilde{\psi}^T + \tilde{\eta} \tilde{\psi}^T \right] \right) \\ = (\det(A))^{1/2} \exp \left(-\frac{i}{2} \int d^3x [\tilde{\eta} A^{-1} \tilde{\eta}^T] \right),\end{aligned}\quad (\text{C3})$$

where A is an antisymmetric operator in coordinate and spinor spaces, and $\eta(x)$, $\tilde{\eta}(x)$ are anticommuting spinor sources which also anticommute with ψ and $\tilde{\psi}$. First, let us integrate in (C1) over ψ -fields with the help of the relation (C2) supposing there that $A = \Delta C \Gamma$, $\tilde{\psi} D_\Gamma = \eta^T$, i.e. $\eta = D_\Gamma^T \tilde{\psi}^T$. Then

$$\begin{aligned}I_\Gamma &= (\det(\Delta C \Gamma))^{1/2} \int [d\tilde{\psi}] \exp \left(-\frac{i}{2} \int d^3x \tilde{\psi} \right. \\ &\quad \left. \times [\Delta C \Gamma + D_\Gamma (\Delta C \Gamma)^{-1} D_\Gamma^T] \tilde{\psi}^T \right).\end{aligned}\quad (\text{C4})$$

Second, the integration over $\tilde{\psi}$ -fields in (C4) can be easily performed with the help of the formula (C3), where one should put $A = \Delta C \Gamma + D_\Gamma (\Delta C \Gamma)^{-1} D_\Gamma^T$ and $\tilde{\eta} = 0$. As a result, we have

$$\begin{aligned} I_\Gamma &= (\det(\Delta C\Gamma))^{1/2} (\det[\Delta C\Gamma + D_\Gamma(\Delta C\Gamma)^{-1}D_\Gamma^T])^{1/2} \\ &= (\det[\Delta^2(C\Gamma)^2 + D_\Gamma(C\Gamma)^{-1}D_\Gamma^T C\Gamma])^{1/2}. \end{aligned} \quad (\text{C5})$$

We evaluate the expression (C5) in two cases, (i) when $\Gamma = \mathbf{1}_s$ and $D_\Gamma = D$, where D is presented in (16), and (ii) when $\Gamma = i\gamma^3\gamma^5$ and $D_\Gamma = D_{\gamma^3}$, where D_{γ^3} is given in (B7).

(i) *The case $\Gamma = \mathbf{1}_s$ and $D_\Gamma = D = \gamma^\rho i\partial_\rho + \mu\gamma^0 + \mu_5\gamma^0\gamma^5 - M$.*—Taking into account the relations $(\partial_\nu)^T = -\partial_\nu$ and $C^{-1}(\gamma^\nu)^T C = -\gamma^\nu$ ($\nu = 0, 1, 2$), we obtain from (C5)

$$I_{\mathbf{1}_s} = (\det[-\Delta^2 + D_+ D_-])^{1/2} \equiv (\det B)^{1/2}, \quad (\text{C6})$$

where $D_\pm = \gamma^\nu i\partial_\nu - M \pm (\mu\gamma^0 + \mu_5\gamma^0\gamma^5)$. Using the general relation $\det B = \exp(\text{Tr} \ln B)$, we get from (C6):

$$\ln I_{\mathbf{1}_s} = \frac{1}{2} \text{Tr} \ln(B) = \frac{1}{2} \sum_{i=1}^4 \int \frac{d^3 p}{(2\pi)^3} \ln(\lambda_i(p)) \int d^3 x. \quad (\text{C7})$$

(A more detailed consideration of operator traces is presented in Appendix A of the paper [42].) In this formula the symbol Tr means the trace of an operator both in the coordinate and internal spaces. Moreover, $\lambda_i(p)$ ($i = 1, \dots, 4$) in (C7) are four eigenvalues of the 4×4 Fourier transformation matrix $\tilde{B}(p)$ of the operator B from (C6). Namely,

$$\begin{aligned} \lambda_{1,\dots,4}(p) &= M^2 - |\vec{p}|^2 + p_0^2 - \mu^2 + \mu_5^2 - \Delta^2 \\ &\quad \pm 2\sqrt{M^2(p_0^2 - |\vec{p}|^2) + (|\mu||\vec{p}| \pm |\mu_5|p_0)^2}, \end{aligned} \quad (\text{C8})$$

where $|\vec{p}| = \sqrt{p_1^2 + p_2^2}$. It is clear from these relations that $\lambda_{1,\dots,4}(p)$ are even functions vs μ and/or μ_5 . So, it is enough to take into account only nonnegative values of the chemical potentials μ and μ_5 .

(ii) *The case $\Gamma = i\gamma^3\gamma^5$ and $D_\Gamma = D_{\gamma^3} = \gamma^\rho i\partial_\rho + \mu\gamma^0 + \mu_3\gamma^0\gamma^3 - M$.*—In this case $C^{-1}D_\Gamma^T C = \gamma^\rho i\partial_\rho - \mu\gamma^0 + \mu_3\gamma^0\gamma^3 - M$. Then it follows from (C5) that

$$I_\Gamma = (\det[-\Delta^2 + \tilde{D}_+ \tilde{D}_-])^{1/2} \equiv (\det \mathcal{B})^{1/2}, \quad (\text{C9})$$

where $\tilde{D}_\pm = \gamma^\nu i\partial_\nu - M \pm (\mu\gamma^0 + \mu_3\gamma^0\gamma^3)$. Then, similar to (C7), it is easy to find that in the case under consideration

$$\ln I_\Gamma = \frac{1}{2} \text{Tr} \ln(\mathcal{B}) = \frac{1}{2} \sum_{i=1}^4 \int \frac{d^3 p}{(2\pi)^3} \ln(\tilde{\lambda}_i(p)) \int d^3 x, \quad (\text{C10})$$

where $\tilde{\lambda}_i(p)$ ($i = 1, \dots, 4$) are four eigenvalues of the 4×4 Fourier transformation matrix $\tilde{\mathcal{B}}(p)$ of the operator \mathcal{B} from (C9). It turns out that the eigenvalues $\tilde{\lambda}_i(p)$ are connected with the eigenvalues $\lambda_i(p)$ (C8) by the simple relations

$$\tilde{\lambda}_i(p) = \lambda_i(p)|_{\mu_5 \rightarrow \mu_3}. \quad (\text{C11})$$

APPENDIX D: EVALUATION OF THE FUNCTION $F_1(M)$ (38)

To calculate the improper convergent integral in (38) we first use there a polar coordinate system, i.e. $\int d^2 p = 2\pi \int_0^\infty p dp$, and then restrict the p -integration region by Λ (suppose in addition that $\Lambda \gg \mu, \mu_5, M$). As a result, we come to the regularized expression $F_{1\Lambda}(M)$ of the TDP (38), $F_{1\Lambda}(M) = V_1(M) + I_1 + I_+ + I_-$, where

$$\begin{aligned} I_1 &= - \int_0^\Lambda \frac{p dp}{2\pi} \left[\sqrt{M^2 + (p + \mu_5)^2} + \sqrt{M^2 + (p - \mu_5)^2} \right. \\ &\quad \left. - 2\sqrt{p^2 + M^2} \right], \end{aligned} \quad (\text{D1})$$

$$\begin{aligned} I_\pm &= - \int_0^\Lambda \frac{p dp}{2\pi} \left(\mu - \sqrt{M^2 + (p \pm \mu_5)^2} \right) \\ &\quad \times \theta\left(\mu - \sqrt{M^2 + (p \pm \mu_5)^2}\right). \end{aligned} \quad (\text{D2})$$

Due to the presence of the $\theta(x)$ -functions in (D2) and sufficiently high values of the cutoff parameter $\Lambda \gg \mu, \mu_5, M$, the quantities I_\pm indeed do not depend on Λ . Moreover, it is evident that I_+ is a nonzero quantity only in the case $\mu > \sqrt{M^2 + \mu_5^2}$. Hence, substituting $q = p + \mu_5$ for the I_+ -integration in (D2), we have

$$\begin{aligned} I_+ &= - \frac{\theta\left(\mu - \sqrt{M^2 + \mu_5^2}\right)}{2\pi} \\ &\quad \times \int_{\mu_5}^{\sqrt{\mu^2 - M^2}} (q - \mu_5) \left(\mu - \sqrt{M^2 + q^2} \right) dq. \end{aligned} \quad (\text{D3})$$

[The upper limit in the integral (D3) corresponds to a value of the momentum p , where the θ -function of the integrand for I_+ from (D2) is equal to zero, i.e. to a value of p determined by the condition $\mu = \sqrt{M^2 + (p + \mu_5)^2}$.]

It is convenient to present the quantity I_- from (D2) as a sum of two integrals, $I_- = i_1 + i_2$, where

$$\begin{aligned} i_1 &= - \int_0^{\mu_5} \frac{p dp}{2\pi} \left(\mu - \sqrt{M^2 + (p - \mu_5)^2} \right) \\ &\quad \times \theta\left(\mu - \sqrt{M^2 + (p - \mu_5)^2}\right), \end{aligned} \quad (\text{D4})$$

$$\begin{aligned} i_2 &= - \int_{\mu_5}^\Lambda \frac{p dp}{2\pi} \left(\mu - \sqrt{M^2 + (p - \mu_5)^2} \right) \\ &\quad \times \theta\left(\mu - \sqrt{M^2 + (p - \mu_5)^2}\right). \end{aligned} \quad (\text{D5})$$

It is clear that i_2 is a nonzero quantity only at $\mu > M$. Then, performing in the integral (D5) the substitution $q = p - \mu_5$, we obtain

$$i_2 = -\frac{\theta(\mu - M)}{2\pi} \int_0^{\sqrt{\mu^2 - M^2}} (q + \mu_5) \left(\mu - \sqrt{M^2 + q^2} \right) dq. \quad (\text{D6})$$

Obviously, we have $i_1 \equiv 0$ at $\mu < M$. To evaluate i_1 at other values of μ , we should, first, substitute $q = \mu_5 - p$ in the integral (D4) and then consider two different regions of the parameter μ , (i) $\omega_1 = \{\mu: M < \mu < \sqrt{M^2 + \mu_5^2}\}$, (ii) $\omega_2 = \{\mu: \sqrt{M^2 + \mu_5^2} < \mu\}$. As a result, we have

$$i_1 = -\frac{\theta(\mu - M)\theta\left(\sqrt{M^2 + \mu_5^2} - \mu\right)}{2\pi} \int_0^{\sqrt{\mu^2 - M^2}} (\mu_5 - q) \left(\mu - \sqrt{M^2 + q^2} \right) dq - \frac{\theta\left(\mu - \sqrt{M^2 + \mu_5^2}\right)}{2\pi} \int_0^{\mu_5} (\mu_5 - q) \left(\mu - \sqrt{M^2 + q^2} \right) dq. \quad (\text{D7})$$

Summing the expressions (D3), (D6) and (D7), we have

$$I_+ + I_- = -\frac{\mu_5\theta(\mu - M)\theta\left(\sqrt{M^2 + \mu_5^2} - \mu\right)}{\pi} \int_0^{\sqrt{\mu^2 - M^2}} \left(\mu - \sqrt{M^2 + q^2} \right) dq - \frac{\theta\left(\mu - \sqrt{M^2 + \mu_5^2}\right)}{\pi} \left\{ \mu_5 \int_0^{\mu_5} \left(\mu - \sqrt{M^2 + q^2} \right) dq + \int_{\mu_5}^{\sqrt{\mu^2 - M^2}} \left(\mu - \sqrt{M^2 + q^2} \right) q dq \right\}. \quad (\text{D8})$$

To calculate the I_1 -term of the regularized TDP $F_{1\Lambda}(M)$, it is useful to present I_1 as a sum of three integrals, each one corresponds to some square root expression of the integrand in (D1). Then, substituting $q = p + \mu_5$ and $q = p - \mu_5$ in two of these integrals, it is possible to present I_1 in the form

$$\begin{aligned} -2\pi I_1 &= \left(\int_{\mu_5}^0 + \int_0^\Lambda + \int_\Lambda^{\Lambda + \mu_5} \right) (q - \mu_5) \sqrt{q^2 + M^2} dq - 2 \int_0^\Lambda q \sqrt{q^2 + M^2} dq \\ &\quad + \left(\int_{-\mu_5}^0 + \int_0^\Lambda + \int_\Lambda^{\Lambda - \mu_5} \right) (q + \mu_5) \sqrt{q^2 + M^2} dq \\ &= 2 \int_0^{\mu_5} (\mu_5 - q) \sqrt{q^2 + M^2} dq + \int_\Lambda^{\Lambda + \mu_5} (q - \mu_5) \sqrt{q^2 + M^2} dq + \int_\Lambda^{\Lambda - \mu_5} (q + \mu_5) \sqrt{q^2 + M^2} dq. \end{aligned} \quad (\text{D9})$$

Since $\Lambda \gg \mu, \mu_5, \Delta$, we can use $\sqrt{q^2 + \Delta^2} = q + \Delta^2/(2q) + \dots$ in the last two terms of (D9). Then, after integrations one can see that the sum of these two last integrals in (D9) is equal to zero in the limit $\Lambda \rightarrow \infty$. Hence,

$$\lim_{\Lambda \rightarrow \infty} I_1 = -\frac{1}{\pi} \int_0^{\mu_5} dq (\mu_5 - q) \sqrt{q^2 + M^2} = -\frac{M^3}{3\pi} + \frac{(\mu_5^2 + M^2)\sqrt{\mu_5^2 + M^2}}{3\pi} - \frac{\mu_5^2\sqrt{\mu_5^2 + M^2}}{2\pi} - \frac{\mu_5 M^2}{2\pi} \ln \left[\frac{\mu_5 + \sqrt{\mu_5^2 + M^2}}{M} \right]. \quad (\text{D10})$$

Finally, performing in (D8) trivial table integrations and using the relation

$$F_1(M) = \lim_{\Lambda \rightarrow \infty} F_{1\Lambda}(M) = V_1(M) + \lim_{\Lambda \rightarrow \infty} I_1 + I_+ + I_-, \quad (\text{D11})$$

we obtain from (D11), (D8) and (D10) the expression (40) [the function $V_1(M)$ is given in the text below (39)].

- [1] D. Ebert and M. K. Volkov, Composite meson model with vector dominance based on $U(2)$ invariant four quark interactions, *Z. Phys. C* **16**, 205 (1983); D. Ebert, H. Reinhardt, and M. K. Volkov, Effective hadron theory of QCD, *Prog. Part. Nucl. Phys.* **33**, 1 (1994).
- [2] M. Buballa, NJL-model analysis of dense quark matter, *Phys. Rep.* **407**, 205 (2005).
- [3] Y. Nambu and G. Jona-Lasinio, Dynamical Model of Elementary Particles Based on an Analogy with Superconductivity. I, *Phys. Rev.* **122**, 345 (1961); Dynamical Model of Elementary Particles Based on an Analogy with Superconductivity. II, *Phys. Rev.* **124**, 246 (1961).
- [4] D. J. Gross and A. Neveu, Dynamical symmetry breaking in asymptotically free field theories, *Phys. Rev. D* **10**, 3235 (1974).
- [5] I. V. Krive and A. S. Rozhavsky, Fractional charge in quantum field theory and solid state physics, *Usp. Fiz. Nauk* **152**, 33 (1987) [*Sov. Phys. Usp.* **30**, 370 (1987)].
- [6] A. J. Heeger, S. Kivelson, J. R. Schrieffer, and W.-P. Su, Solitons in conducting polymers, *Rev. Mod. Phys.* **60**, 781 (1988).
- [7] A. Chodos and H. Minakata, The Gross-Neveu model as an effective theory for polyacetylene, *Phys. Lett. A* **191**, 39 (1994); The TBA, the Gross-Neveu model, and polyacetylene, *Lect. Notes Phys.* **508**, 231 (1998); H. Caldas, J. L. Kneur, M. B. Pinto, and R. O. Ramos, Critical dopant concentration in polyacetylene and phase diagram from a continuous four-Fermi model, *Phys. Rev. B* **77**, 205109 (2008).
- [8] V. Schön and M. Thies, *At the Frontier of Particle Physics: Handbook of QCD: Boris Ioffe Festschrift* (World Scientific, Singapore, 2001), Vol. 3, p. 1945; M. Thies, From relativistic quantum fields to condensed matter and back again: updating the Gross-Neveu phase diagram, *J. Phys. A* **39**, 12707 (2006).
- [9] G. W. Semenoff, I. A. Shovkovy, and L. C. R. Wijewardhana, Phase transition induced by a magnetic field, *Mod. Phys. Lett. A* **13**, 1143 (1998).
- [10] V. C. Zhukovsky, K. G. Klimenko, V. V. Khudiyakov, and D. Ebert, Magnetic catalysis of P-parity breakdown in a massive Gross-Neveu model and high- T_c superconductivity, *JETP Lett.* **73**, 121 (2001); V. C. Zhukovsky and K. G. Klimenko, Magnetic catalysis of the P-parity-breaking phase transition of the first order and high-temperature superconductivity, *Theor. Math. Phys.* **134**, 254 (2003); E. J. Ferrer, V. P. Gusynin, and V. de la Incera, Magnetic field induced gap and kink behavior of thermal conductivity *Mod. Phys. Lett. B* **16**, 107 (2002); Thermal conductivity in 3D NJL model under external magnetic field, *Eur. Phys. J. B* **33**, 397 (2003).
- [11] E. C. Marino and L. H. C. M. Nunes, Quantum criticality and superconductivity in quasi-two-dimensional Dirac electronic systems, *Nucl. Phys.* **B741**, 404 (2006); L. H. C. M. Nunes, R. L. S. Farias, and E. C. Marino, Superconducting and excitonic quantum phase transitions in doped Dirac electronic systems, *Phys. Lett. A* **376**, 779 (2012).
- [12] K. G. Klimenko, R. N. Zhokhov, and V. C. Zhukovsky, Superconducting phase transitions induced by chemical potential in $(2 + 1)$ -dimensional four-fermion quantum field theory, *Phys. Rev. D* **86**, 105010 (2012).
- [13] K. G. Klimenko, R. N. Zhokhov, and V. C. Zhukovsky, Superconductivity phenomenon induced by external in-plane magnetic field in $(2 + 1)$ -dimensional Gross-Neveu type model, *Mod. Phys. Lett. A* **28**, 1350096 (2013).
- [14] D. Mesterhazy, J. Berges, and L. von Smekal, Effect of short-range interactions on the quantum critical behavior of spinless fermions on the honeycomb lattice, *Phys. Rev. B* **86**, 245431 (2012).
- [15] D. Ebert, K. G. Klimenko, P. B. Kolmakov, and V. C. Zhukovsky, Phase transitions in hexagonal, graphene-like lattice sheets and nanotubes under the influence of external conditions, arXiv:1509.08093.
- [16] K. G. Klimenko, Phase structure of generalized Gross-Neveu models, *Z. Phys. C* **37**, 457 (1988); B. Rosenstein, B. J. Warr, and S. H. Park, Thermodynamics of $(2 + 1)$ -dimensional four-fermion models, *Phys. Rev. D* **39**, 3088 (1989); Four-Fermion Theory is Renormalizable in $2 + 1$ Dimensions, *Phys. Rev. Lett.* **62**, 1433 (1989).
- [17] G. W. Semenoff and L. C. R. Wijewardhana, Dynamical Mass Generation in 3D Four-Fermion Theory, *Phys. Rev. Lett.* **63**, 2633 (1989); Dynamical violation of parity and chiral symmetry in three-dimensional four-Fermi theory, *Phys. Rev. D* **45**, 1342 (1992).
- [18] B. Rosenstein, B. J. Warr, and S. H. Park, Dynamical symmetry breaking in four-fermion interaction models, *Phys. Rep.* **205**, 59 (1991).
- [19] K. G. Klimenko, Three-dimensional Gross-Neveu model at nonzero temperature and in the presence of an external electromagnetic field, *Z. Phys. C* **54**, 323 (1992); Three-dimensional Gross-Neveu model in an external magnetic field. I, *Theor. Math. Phys.* **89**, 1161 (1991); Three-dimensional Gross-Neveu model at nonzero temperature and in an external magnetic field, *Theor. Math. Phys.* **90**, 1 (1992); V. P. Gusynin, V. A. Miransky, and I. A. Shovkovy, Catalysis of Dynamical Flavor Symmetry Breaking by a Magnetic Field in $2 + 1$ Dimensions, *Phys. Rev. Lett.* **73**, 3499 (1994); A. S. Vshivtsev, B. V. Magnitsky, and K. G. Klimenko, A Gluon condensate and the three-dimensional $(\psi\bar{\psi})^2$ field theory, *Phys. At. Nucl.* **57**, 2171 (1994); Vacuum structure of the $(\bar{\psi}\psi)_3^2$ -model, accounting for the magnetic field and chemical potential $(\psi)_3^2$ -model, accounting for the magnetic field and chemical potential, *Theor. Math. Phys.* **106**, 319 (1996); V. P. Gusynin, D. K. Hong, and I. A. Shovkovy, Chiral symmetry breaking by a non-Abelian external field in $(2 + 1)$ -dimensions, *Phys. Rev. D* **57**, 5230 (1998).
- [20] A. Chodos, H. Minakata, F. Cooper, A. Singh, and W. Mao, Two-dimensional model with chiral condensates and Cooper pairs having a QCD-like phase structure, *Phys. Rev. D* **61**, 045011 (2000).
- [21] D. Ebert, K. G. Klimenko, and H. Toki, Chromomagnetic catalysis of color superconductivity in a $(2+1)$ -dimensional Nambu-Jona-Lasinio model, *Phys. Rev. D* **64**, 014038 (2001); H. Kohyama, Phase diagram of quark-antiquark and diquark condensates at finite temperature and density in the 3-dimensional Gross-Neveu model, *Phys. Rev. D* **77**, 045016 (2008); Phase diagram of quark-antiquark and diquark condensates in the 3-dimensional Gross-Neveu model with the 4-component spinor representation, *Phys. Rev. D* **78**, 014021 (2008).

- [22] D. Ebert, K. G. Klimenko, A. V. Tyukov, and V. C. Zhukovsky, Finite size effects in the Gross-Neveu model with isospin chemical potential, *Phys. Rev. D* **78**, 045008 (2008); D. Ebert, N. V. Gubina, K. G. Klimenko, S. G. Kurbanov, and V. C. Zhukovsky, Chiral density waves in the NJL₂ model with quark number and isospin chemical potentials, *Phys. Rev. D* **84**, 025004 (2011).
- [23] N. V. Gubina, K. G. Klimenko, S. G. Kurbanov, and V. C. Zhukovsky, Inhomogeneous charged pion condensation phenomenon in the NJL₂ model with quark number and isospin chemical potentials, *Phys. Rev. D* **86**, 085011 (2012); Pion and chiral density waves in a (1+1)-dimensional Nambu-Jona-Lasinio model, *Moscow Univ. Phys. Bull.* **67**, 131 (2012).
- [24] J.-L. Kneur, M. B. Pinto, R. O. Ramos, and E. Staudt, Emergence of tricritical point and liquid-gas phase in the massless 2+1 dimensional Gross-Neveu model, *Phys. Rev. D* **76**, 045020 (2007); Updating the phase diagram of the Gross-Neveu model in 2+1 dimensions, *Phys. Lett. B* **657**, 136 (2007).
- [25] K. G. Klimenko, The optimized expansion technique in the three-dimensional Gross-Neveu model, *Z. Phys. C* **50**, 477 (1991); Three-dimensional $(\bar{\psi}\psi)^2$ model and optimized expansion, *Mod. Phys. Lett. A* **09**, 1767 (1994).
- [26] I. Ojima and R. Fukuda, Spontaneous breakdown of fermion number conservation in two dimensions, *Prog. Theor. Phys.* **57**, 1720 (1977).
- [27] A. N. Vasiliev and G. Y. Panasyuk, On the possibilities of a phase transition of superconducting type in the Gross-Neveu model, *Teor. Mat. Fiz.* **103**, 295 (1995) [*Theor. Math. Phys.* **103**, 570 (1995)].
- [28] M. Thies, Duality between quark-quark and quark-antiquark pairing in 1 + 1 dimensional large N models, *Phys. Rev. D* **68**, 047703 (2003); Integrable Gross-Neveu models with fermion-fermion and fermion-antifermion pairing, *Phys. Rev. D* **90**, 105017 (2014).
- [29] D. Ebert, T. G. Khunjua, K. G. Klimenko, and V. C. Zhukovsky, Competition and duality correspondence between inhomogeneous fermion-antifermion and fermion-fermion condensations in the NJL₂ model, *Phys. Rev. D* **90**, 045021 (2014).
- [30] N. D. Mermin and H. Wagner, Absence of Ferromagnetism or Antiferromagnetism in One- or Two-Dimensional Isotropic Heisenberg Models, *Phys. Rev. Lett.* **17**, 1133 (1966); S. Coleman, There are no Goldstone bosons in two dimensions, *Commun. Math. Phys.* **31**, 259 (1973).
- [31] A. A. Andrianov, D. Espriu, and X. Planells, An effective QCD Lagrangian in the presence of an axial chemical potential, *Eur. Phys. J. C* **73**, 2294 (2013); Chemical potentials and parity breaking: the Nambu-Jona-Lasinio model, *Eur. Phys. J. C* **74**, 2776 (2014); R. Gatto and M. Ruggieri, Hot quark matter with an axial chemical potential, *Phys. Rev. D* **85**, 054013 (2012); M. Ruggieri, Quark matter with a chiral chemical potential, [arXiv:1110.4907](https://arxiv.org/abs/1110.4907); L. Yu, H. Liu, and M. Huang, Spontaneous generation of local CP violation and inverse magnetic catalysis, *Phys. Rev. D* **90**, 074009 (2014); L. Yu, H. Liu, and M. Huang, The effect of the chiral chemical potential on the chiral phase transition in the NJL model with different regularization schemes, [arXiv:1511.03073](https://arxiv.org/abs/1511.03073); G. Cao and P. Zhuang, Effects of chiral imbalance and magnetic field on pion superfluidity and color superconductivity, *Phys. Rev. D* **92**, 105030 (2015).
- [32] V. V. Braguta and A. Y. Kotov, Catalysis of dynamical chiral symmetry breaking by chiral chemical potential, [arXiv:1601.04957](https://arxiv.org/abs/1601.04957).
- [33] V. A. Miransky and I. A. Shovkovy, Quantum field theory in a magnetic field: From quantum chromodynamics to graphene and Dirac semimetals, *Phys. Rep.* **576**, 1 (2015).
- [34] K. Fukushima, D. E. Kharzeev, and H. J. Warringa, Chiral magnetic effect, *Phys. Rev. D* **78**, 074033 (2008).
- [35] A. J. Mizher, A. Raya, and C. Villavicencio, Electric current generation in distorted graphene, *Int. J. Mod. Phys. B* **30**, 1550257 (2016).
- [36] S. Ryu, C. Mudry, C.-Y. Hou, and C. Chamon, Masses in graphenelike two-dimensional electronic systems: Topological defects in order parameters and their fractional exchange statistics, *Phys. Rev. B* **80**, 205319 (2009).
- [37] W. Pauli, On the conservation of the Lepton charge, *Nuovo Cimento* **6**, 204 (1957); F. Gürsey, Relation of charge independence and baryon conservation to Pauli's transformation, *Nuovo Cimento* **7**, 411 (1958).
- [38] V. C. Zhukovsky, K. G. Klimenko, and V. V. Khudiyakov, Magnetic catalysis in a P-even, chiral-invariant three-dimensional model with four-fermion interaction, *Teor. Mat. Fiz.* **124**, 323 (2000) [*Theor. Math. Phys.* **124**, 1132 (2000)].
- [39] B. Vanderheyden and A. D. Jackson, A random matrix model for color superconductivity at zero chemical potential, *Phys. Rev. D* **61**, 076004 (2000); V. C. Zhukovsky, V. V. Khudiyakov, K. G. Klimenko, and D. Ebert, Chromomagnetic catalysis of color superconductivity, *Pis'ma Zh. Eksp. Teor. Fiz.* **74**, 595 (2001) [*JETP Lett.* **74**, 523 (2001)].
- [40] G. Cao, L. He, and P. Zhuang, Collective modes and Kosterlitz-Thouless transition in a magnetic field in the planar Nambu-Jona-Lasinio model, *Phys. Rev. D* **90**, 056005 (2014).
- [41] A. N. Vasiliev, *Functional Methods in Quantum Field Theory and Statistical Physics* (Leningrad University Press, Leningrad, 1976).
- [42] D. Ebert and K. G. Klimenko, Properties of the massive Gross-Neveu model with nonzero baryon and isospin chemical potentials, *Phys. Rev. D* **80**, 125013 (2009).