

Upper bounds on sparticle masses from naturalness or how to disprove weak scale supersymmetry

Howard Baer,^{1,*} Vernon Barger,^{2,†} and Michael Savoy^{1,‡}¹*Department of Physics and Astronomy, University of Oklahoma,
Norman, Oklahoma 73019, USA*²*Department of Physics, University of Wisconsin, Madison, Wisconsin 53706, USA*
(Received 15 September 2015; published 16 February 2016)

While it is often stated that the notion of electroweak (EW) naturalness in supersymmetric models is subjective, fuzzy and model dependent, here we argue the contrary: electroweak naturalness can be elevated to a *principle* which is both objective and predictive. We demonstrate visually when too much fine-tuning sets in at the electroweak scale which corresponds numerically to the measure $\Delta_{\text{BG}} \sim \Delta_{\text{EW}} \gtrsim 30$. While many constrained supersymmetry models are already excluded by this value, we derive updated upper bounds on sparticle masses within the two-extra parameter nonuniversal Higgs model (NUHM2). We confirm the classic Barbieri-Giudice (BG) result that $\Delta_{\text{BG}} < 30$ implies $\mu < 350$ GeV. However, by combining dependent soft terms which appear as multiples of $m_{3/2}$ in supergravity models, then we obtain $m_{\tilde{g}} \lesssim 4$ TeV as opposed to the BG result that $m_{\tilde{g}} \lesssim 350$ GeV. We compare the NUHM2 results to a similar scan in the phenomenological minimal supersymmetric standard model (pMSSM) with 19 weak scale parameters. In the pMSSM with complete one-loop scalar potential plus dominant two-loop terms, then a $m_{\tilde{g}} < 7$ TeV bound is found. Our tabulation of upper bounds provides a target for experimenters seeking to discover or else falsify the existence of weak scale supersymmetry. In an Appendix, we show contributions to the naturalness measure from one-loop contributions to the weak scale scalar potential.

DOI: [10.1103/PhysRevD.93.035016](https://doi.org/10.1103/PhysRevD.93.035016)

I. INTRODUCTION

Weak scale supersymmetry (SUSY) [1] is a highly motivated paradigm for physics beyond the Standard Model (SM). The principal motivation is that it offers a technical solution to the gauge hierarchy problem or naturalness problem of the SM in that it ensures cancellation of quadratic divergences of scalar field masses to all orders in perturbation theory [2]. This is especially relevant now that a bona fide fundamental scalar has been discovered [3,4]: i.e. the Higgs boson h . The SUSY technical solution is accomplished in a highly simple manner: merely extending the set of spacetime symmetries which underlies quantum field theory to their most general structure based upon a graded Lie algebra. In fact the SUSY paradigm is supported indirectly via three sets of measurements:

- (1) the measured values of the three gauge forces at the weak scale are exactly what is needed for SUSY gauge coupling unification [5],
- (2) the measured value of the top quark mass is exactly what is needed to properly drive a radiative breakdown in electroweak (EW) symmetry [6] and

- (3) the measured value of the Higgs boson mass $m_h = 125.09 \pm 0.24$ GeV falls squarely within the predicted narrow band of allowed minimal supersymmetric standard model (MSSM) values [7].

On the negative side of the ledger, there is as of yet no sign of supersymmetric matter after extensive runs of LHC at $\sqrt{s} = 7\text{--}8$ TeV [8,9]. This fact has led many theorists to question the validity of SUSY in light of the oft-repeated mantra that weak scale naturalness requires weak scale sparticles. It is also baffling on the experimental side as to when the weak scale SUSY hypothesis is ruled out, and when one ought to move on to alternative directions. This is especially vexing in that many theoretical predictions tend to lie just beyond current exclusion limits: when the exclusion limits increase, then the theoretical predictions retreat towards higher mass values again just beyond the latest lower mass bounds. This leads to the important question: *what does it take to falsify the weak scale SUSY hypothesis?* When is the job done? Are new accelerators and experiments required, or does LHC with $\sqrt{s} \sim 13\text{--}14$ TeV and high luminosity have the necessary resolving power?

Historically, an answer to this question was provided in the classic paper by Barbieri and Giudice (BG) [10] wherein—based upon the “naturalness criterion”—they derived upper bounds on various sparticle masses.¹ These upper bounds could serve as targets for experimental

*baer@nhn.ou.edu

†barger@pheno.wisc.edu

‡savoy@nhn.ou.edu

¹See also Ref. [11].

facilities with the intent to discover or disprove weak scale SUSY. Following earlier work by Ellis *et al.* [12], they introduced the naturalness measure²

$$\Delta_{\text{BG}} \equiv \max_i \left| \frac{\partial \log m_Z^2}{\partial \log p_i} \right|, \quad (1)$$

where the p_i are fundamental parameters of the theory labeled by the index i . Working within the MSSM with unified GUT scale soft breaking terms $m_0, m_{1/2}, A_0$ and B , they presented upper bounds on sparticle masses and parameters as a function of the top-quark mass (which of course was not yet known at the time). In light of our present knowledge of the top quark mass ($m_t = 173.21 \pm 0.87$ GeV PDG value with combined statistical/systematic errors), they would conclude that in order to accommodate $\Delta_{\text{BG}} < 10$ (or better than 10% fine-tuning in m_Z), then $m_0 \lesssim 300$ GeV, $m_{1/2} \lesssim 100$ GeV and $\mu \lesssim 200$ GeV. These upper bounds implied that the lighter charginos $m_{\tilde{W}_1} \lesssim 100$ GeV and gluinos $m_{\tilde{g}} \lesssim 350$ GeV. Explorations at LEP2 resulted in limits of $m_{\tilde{W}_1} > 103.5$ GeV [14] so that weak scale SUSY already appeared somewhat fine-tuned by the post-LEP and pre-LHC era [15]. The current limits on gluino mass from LHC8 require $m_{\tilde{g}} \gtrsim 1300$ GeV. Thus, in the post LHC8 era, the naturalness issue has intensified, and based upon these theory/experiment confrontations, one might well be tempted to conclude that weak scale SUSY has been disproved [16].

In this paper, we reexamine upper bounds on sparticle masses from the naturalness principle. In Sec. II, we discuss naturalness and fine-tuning and articulate the Naturalness Principle. In Sec. III, we apply the Naturalness Principle at the weak scale to derive the electroweak fine-tuning measure Δ_{EW} . In Sec. IV we discuss Barbieri-Giudice fine-tuning Δ_{BG} , how it depends on the selection of an independent parameter set and how it relates to Δ_{EW} : when properly applied by combining dependent contributions, then $\Delta_{\text{BG}} \approx \Delta_{\text{EW}}$. In Sec. V, we demonstrate visually when too much fine-tuning sets in and what values of $\Delta_{\text{EW}} \approx \Delta_{\text{BG}}$ are too much. In Sec. VI we derive upper bounds on sparticle masses in the two-extra parameter nonuniversal Higgs model (NUHM2) and compare them to upper bounds from the classic BG paper. In Sec. VII, we derive alternative upper bounds arising from a scan over the 19 dimensional weak scale pMSSM parameter space. We compare these against results from the 19 parameter SUGRA model with soft terms defined at $Q = m_{\text{GUT}}$. In Sec. VIII, we conclude by presenting a bar chart of upper bounds on sparticle masses which form a target for experimenters seeking to confirm or refute weak scale supersymmetry. The hard target is that $\mu < 350$ GeV in any models (defined at a high scale or weak

scale) based on the MSSM. In models with RG running from m_{GUT} to m_{weak} , then $m_{\tilde{g}} \lesssim 2(4)$ TeV for $\Delta_{\text{BG}} \approx \Delta_{\text{EW}} < 10(30)$. If one dispenses with RG running as in the pMSSM, then no bound is obtained on $m_{\tilde{g}}$ using the one-loop RG-improved effective potential. By including leading two-loop contributions to the scalar potential, we find a bound of $m_{\tilde{g}} < 7$ TeV for $\Delta_{\text{EW}} < 30$ in the pMSSM. In an Appendix, we discuss the contributions to Δ_{EW} from various radiative corrections $\Sigma_u^{\mu}(i)$ and plot their magnitudes in two-dimensional parameter planes.

II. THE NATURALNESS PRINCIPLE

Several definitions of naturalness can be found in the literature: some are more abstract while others are more pragmatic. Here we articulate the following Naturalness Principle.^{3,4}

An observable \mathcal{O} is *natural* if all *independent* contributions to \mathcal{O} are less than or of order \mathcal{O} .

Suppose \mathcal{O} can be calculated in terms of n independent contributions $\mathcal{O} = o_1 + \dots + o_n$. If one of the contributions, say o_n , is far larger than \mathcal{O} , then it would have to be the case that one or more of the o_i would have to be a large opposite sign contribution which would require fine-tuning of $o_i \sim -o_n$ such that $\mathcal{O} \ll o_n$. This is the link between naturalness and fine-tuning: a quantity \mathcal{O} is natural if it requires no large fine-tuning of independent contributions to maintain its measured value.

A common pitfall in evaluating when a quantity is natural is to split it into *dependent* contributions: if $\mathcal{O} = o_1 + o_2 + \dots$, but as one increases o_1 then o_2 necessarily increases to large opposite sign, then o_1 and o_2 should be combined before the final evaluation of naturalness. This pitfall has been dubbed the ‘‘fine-tuning rule’’ [19].

To see how Δ_{BG} is a measure of naturalness, consider the observable \mathcal{O} expressed as a linear combination of n fundamental parameters p_i :

$$\mathcal{O} = a_1 p_1 + \dots + a_n p_n, \quad (2)$$

where the a_i are numerical coefficients. Applying the Δ_{BG} measure, we would find

$$\Delta_{\text{BG}} = \max_i \left| \frac{p_i}{\mathcal{O}} \frac{\partial \mathcal{O}}{\partial p_i} \right| = \max_i |a_i p_i / \mathcal{O}|, \quad (3)$$

i.e. the BG measure just picks off each term on the right-hand side of Eq. (2) and compares it to \mathcal{O} .⁵ To avoid

²The authors of Ref. [13] note the link between naturalness and Bayesian statistics wherein naturalness corresponds to ‘‘more probable.’’

³Dimopoulos and Susskind articulate: ‘‘Naturalness: no parameter needs to be adjusted to unreasonable accuracy’’ [17].

⁴Weinberg states: ‘‘The appearance of fine-tuning in a scientific theory is like a cry of distress from nature, complaining that something needs to be better explained’’ [18].

⁵If terms include powers of p_i , e.g. $\mathcal{O} = \sum_i a_i p_i^{n_i}$, then each sensitivity coefficient contains an additional factor of n_i .

fine-tunings, then Δ_{BG} should be less than some value (typically 10–100) depending on how much fine-tuning one is willing to tolerate.

III. WEAK SCALE NATURALNESS

Starting with the weak scale scalar (Higgs) potential of the MSSM, the minimization conditions $\frac{\partial V}{\partial h_u^{0*}} = \frac{\partial V}{\partial h_d^{0*}} = 0$ allow one to determine the Higgs field VEVs in terms of the soft SUSY breaking parameters and the μ parameter [1]. Then, since $m_Z^2 = (g^2 + g'^2)(v_u^2 + v_d^2)/2$, we can relate the observed value of m_Z to the weak scale SUSY parameters as

$$\begin{aligned} \frac{m_Z^2}{2} &= \frac{(m_{H_d}^2 + \Sigma_d^d) - (m_{H_u}^2 + \Sigma_u^u)\tan^2\beta}{(\tan^2\beta - 1)} - \mu^2 \\ &\simeq -m_{H_u}^2 - \mu^2. \end{aligned} \quad (4)$$

Here, $m_{H_u}^2$ and $m_{H_d}^2$ are the *weak scale* soft SUSY breaking Higgs masses, μ is the *supersymmetric* Higgsino mass term and Σ_u^u and Σ_d^d contain an assortment of loop corrections to the effective potential.⁶ Already at this stage (not yet worrying about high scale parameters), the naturalness principle requires each term on the right-hand side (rhs) of Eq. (4) to be comparable to or less than $m_Z^2/2$. From the partial equality on the rhs, it is plain to see that the weak scale values of $m_{H_u}^2$, μ^2 and the various $\Sigma_u^u(i)$ (i labels the various loop contributions) should all be comparable to or less than $m_Z^2/2$ [20]. This allows us to define the *electroweak* fine-tuning measure Δ_{EW} as

$$\Delta_{\text{EW}} = \max |\text{each term on rhs of Eq. (4)}| / (m_Z^2/2). \quad (5)$$

In gravity mediation, the GUT scale soft terms are expected to be of order the gravitino mass $m_{3/2}$. Since the physical sparticle masses are derived from the soft terms, we thus expect the weak scale soft terms also to be of order $m_{3/2}$. Since LHC8 requires multi-TeV values of $m_{\tilde{g}}$ and $m_{\tilde{q}}$, then it seems LHC8 is telling us that $m_{3/2}$ is also in the multi-TeV range. This is good news for the SUSY flavor and CP problems [21] and the gravitino problem [22]: all these are ameliorated by multi-TeV values of $m_{3/2}$ and sparticle masses. The puzzle then is: why is m_Z (and m_W and m_h) not also at the multi-TeV scale? There is one soft term whose weak scale value may be very different from its GUT scale value. The term $m_{H_u}^2$ may hold multi-TeV values at m_{GUT} but is necessarily driven through zero to negative values at $Q = m_{\text{weak}}$ in order to break electro-weak symmetry [6]. If it is driven to small values

⁶We will not consider $\tan\beta$ as an independent parameter here. Its value is determined also by the minimization conditions in terms of the SUSY parameters.

comparable to $-m_Z^2/2$ rather than large negative values, then one naturalness condition may be satisfied. This case has been dubbed *radiatively driven naturalness* [23,24].

The other condition for naturalness is that $\mu^2 \sim m_Z^2/2$.⁷ In this case, we note that μ is SUSY conserving and not SUSY breaking. It is a very different entity from the soft terms: naively, it would be present even in the absence of SUSY breaking. In this case, one expects its value to be of order the GUT or Planck scale M_P . How it comes instead to be $\sim m_Z$ is known as the SUSY μ problem [28]. There are two parts to the solution of the SUSY μ problem: first, one must forbid it (via some symmetry) from attaining values $\sim M_P$, and second, one must regenerate it of order m_Z (via symmetry breaking). In the original Kim-Nilles formulation [28], it was noted that in the SUSY DFSZ [29] axion model, Peccei-Quinn symmetry forbids the μ term. The spontaneous breaking of Peccei-Quinn (PQ) symmetry at scale $f_a \sim 10^{11}$ GeV generates an axion (thus solving the notorious strong charge conjugation times parity symmetry problem), but also generates a μ term of order f_a^2/M_P [30]. Since one expects the gravitino mass (and hence soft terms) to be of order $m_{3/2} \sim m_{\text{hidden}}^2/M_P$, where m_{hidden} is an intermediate mass scale associated with hidden sector SUGRA breaking, then the apparent Little Hierarchy $\mu \ll m_{3/2}$ is just a consequence of a mismatch between PQ breaking scale and hidden sector mass scale: $f_a \ll m_{\text{hidden}}$. In fact, in models such as the Murayama-Suzuki-Yanagida (MSY) SUSY axion model [31], PQ symmetry is radiatively broken as a consequence of SUSY breaking. In the MSY model, for canonical parameter values a small value of $\mu \sim 100$ –200 GeV can be easily generated from $m_{3/2} \sim 5$ –20 TeV [32].

Finally, the radiative corrections Σ_u^u should be less than or $\sim m_Z^2/2$. Typically, the top-squark contributions are the largest of these. The top-squark contributions $\Sigma_u^u(\tilde{t}_{1,2})$ are minimized for TeV-scale highly mixed top squarks, which also lift the Higgs mass to $m_h \sim 125$ GeV [23].

The EW fine-tuning measure is the most conservative of the fine-tuning measures in that any model with large Δ_{EW} is surely fine-tuned. Also, Δ_{EW} clearly agrees with Δ_{BG} for SUSY models defined purely at the weak scale such as the pMSSM [33].⁸ Another virtue of Δ_{EW} is that its value is *model-independent* (within the MSSM) in that it does not depend on *how* the weak scale spectrum was generated.

⁷In this regard, we rely on Einstein's advice to maintain the theory as simple as possible, but no simpler. By adding various exotica to the MSSM, then one can create models with heavy Higgsinos which may still be natural [25–27]. These often involve adding exotic states such as scalar gluons. It is not clear whether such constructs admit a UV completion.

⁸The pMSSM, or phenomenological MSSM, is the MSSM defined with weak scale input parameters where all CP violating and flavor violating soft terms have been set to zero. Also, usually first/second generation soft terms are set equal to each other to avoid flavor violations.

Also, from a pragmatic point of view, the fine-tuning encapsulated in Δ_{EW} is exactly where spectrum generators invoke explicit fine-tuning. In such codes, usually $m_{H_u}^2$ and other soft terms are calculated at the weak scale via RG running, and then the value of μ is dialed/fine-tuned to enforce that the measured value of m_Z is obtained. Without such fine-tuning, the generated value of m_Z would typically lie in the multi-TeV region [19].

But does Δ_{EW} encapsulate *all* the fine-tuning, including high-scale effects, or is it just a lower bound on fine-tuning [34]?

IV. BG FINE-TUNING AND INDEPENDENT MODEL PARAMETERS

For models defined in terms of high scale parameters, the BG measure can be evaluated by expanding the terms on the rhs of Eq. (4) using semianalytic RG solutions in terms of fundamental high scale parameters [10,35]. For the case of $\tan\beta = 10$ and taking the high scale $\Lambda = m_{\text{GUT}}$, then one finds [36–38]

$$m_Z^2 \simeq -2.18\mu^2 + 3.84M_3^2 - 0.65M_3A_t - 1.27m_{H_u}^2 - 0.053m_{H_d}^2 + 0.73m_{Q_3}^2 + 0.57m_{U_3}^2 + \dots \quad (6)$$

The problem with most applications of the BG measure is that in any sensible model of SUSY breaking, the high scale SUSY parameters are not independent. For instance in gravity mediation, for any given hidden sector, the soft SUSY breaking terms are all calculated as numerical coefficients times the gravitino mass [39–41]: e.g. $M_3(\Lambda) = a_{M_3}m_{3/2}$, $A_t = a_{A_t}m_{3/2}$, $m_{Q_3}^2 = a_{Q_3}m_{3/2}^2$, etc. where the a_i are just numerical constants. (For example, in string theory with dilaton-dominated SUSY breaking [40,41], then we expect $m_0^2 = m_{3/2}^2$ with $m_{1/2} = -A_0 = \sqrt{3}m_{3/2}$.) The reason one scans multiple SUSY model soft term parameters is to account for a wide variety of hidden sector possibilities. But this does not mean each soft term is independent from the others. By writing the soft terms in Eq. (6) as suitable multiples of $m_{3/2}^2$, then large positive and negative contributions can be combined/canceled and one arrives at the simpler expression [19,42]:

$$m_Z^2 \simeq -2\mu^2(\Lambda) + a \cdot m_{3/2}^2 \quad (7)$$

since the SUSY μ term hardly evolves. The value of a is just some number which is the sum of all the coefficients of the terms $\propto m_{3/2}^2$.

Using the BG measure applied to Eq. (7), then it is found that naturalness requires $\mu^2 \sim \mu^2(\Lambda) \sim m_Z^2$ and also that $am_{3/2}^2 \sim m_Z^2$. The first requirement is the same as in Δ_{EW} . The second requirement is fulfilled *either* by $m_{3/2} \sim m_Z$ (which seems unlikely in light of LHC Higgs mass

measurement and sparticle mass bounds) *or* when $m_{3/2}$ is large but the coefficient a is small [19]: i.e. there are large cancellations in Eq. (6). By equating m_Z^2 in terms of weak scale parameters [Eq. (4)] with m_Z^2 in terms of high scale parameters Eq. (7), and using the fact that $\mu(\Lambda) \simeq \mu(\text{weak})$, then also $am_{3/2}^2 \simeq m_{H_u}^2(\text{weak})$ and so a low value of Δ_{BG} also requires a low value of $m_{H_u}^2(\text{weak}) \sim -m_Z^2$. By properly evaluating BG fine-tuning in terms of independent SUGRA parameters, namely $m_{3/2}$ and $\mu(\Lambda)$, then we are lead back to the same sort of conditions as implied by low Δ_{EW} : i.e. that $m_{H_u}^2$ is driven radiatively to small negative values. In this manner

- (i) Δ_{EW} encompasses *both* high scale and weak scale fine-tuning.

The ambiguity between fine-tuning measures is removed.⁹ For electroweak naturalness in SUSY theories, it is not the case that sparticles need to be near the scale ~ 100 GeV: it is just the weak scale Lagrangian parameters m_{H_u} and μ : the remaining soft breaking terms may lie comfortably in the multi-TeV range at little cost to naturalness.

V. HOW MUCH FINE-TUNING IS TOO MUCH?

Once a reliable measure of fine-tuning is established, then the next question is: for which values of Δ_{EW} is a model natural, and for which can it be considered fine-tuned? The original BG paper considered $\Delta_{\text{BG}} < 10$ to be natural. However, as experimental limits on sparticle masses grew, then much higher values of Δ_{BG} were tolerated—up to ~ 100 [38] or even ~ 1000 [46]. This increased tolerance perhaps reflected a reluctance to easily give up on an amazingly beautiful and simple paradigm even in the face of apparent large fine-tuning.

By properly evaluating Δ_{BG} in terms of Eq. (7), or equivalently Δ_{EW} (which includes one-loop radiative corrections), then we can reevaluate how much fine-tuning is too much. In Fig. 1, we show the dominant contributions to Δ_{EW} for a simple NUHM2 benchmark model with $m_0 = 5$ TeV, $m_{1/2} = 700$ GeV, $A_0 = -8.3$ TeV and $\tan\beta = 10$ with $m_A = 1$ TeV and variable μ . In the first

⁹Another common fine-tuning measure [43–45] is known as Higgs mass or large log fine-tuning Δ_{HS} . In its usual implementation, Δ_{HS} requires the radiative correction $\delta m_{H_u}^2$ to the Higgs mass $m_h^2 \simeq \mu^2 + m_{H_u}^2(\Lambda) + \delta m_{H_u}^2$ be comparable to m_h^2 . This contribution is usually written as $\delta m_{H_u}^2|_{\text{rad}} \sim -\frac{3f_t^2}{8\pi^2}(m_{Q_3}^2 + m_{U_3}^2 + A_t^2) \ln(\Lambda^2/m_{\text{SUSY}}^2)$ which is used to claim that third generation squarks $m_{\tilde{t}_{1,2}, \tilde{b}_1}$ be approximately less than 500 GeV and A_t be small for naturalness. This expression for $\delta m_{H_u}^2$ makes several approximations—the worst of which is to neglect that the value of $m_{H_u}^2$ itself contributes to $\delta m_{H_u}^2$. By combining dependent contributions, then instead one requires that the two contributions $m_h^2 = \mu^2 + (m_{H_u}^2(\Lambda) + \delta m_{H_u}^2)$ be comparable to m_h^2 . Since $m_{H_u}^2(\Lambda) + \delta m_{H_u}^2 = m_{H_u}^2(\text{weak})$, then we are lead back to the same conditions as low Δ_{EW} and low Δ_{BG} .

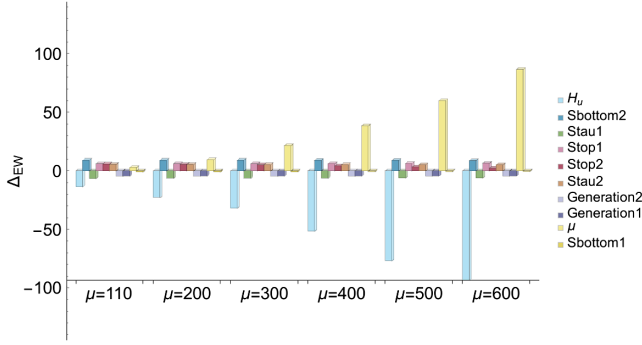


FIG. 1. Plot of contributions to Δ_{EW} for various values of superpotential μ parameter.

case, with $\mu = 110$ GeV and $\Delta_{EW} = 13.6$, we display the several largest contributions to Δ_{EW} . Some are positive and some are negative but all are comparable to ± 10 . This case is visually highly natural: the Z mass is ~ 100 GeV because its various contributions are ~ 100 GeV. In the second column, with $\mu = 200$ GeV and $\Delta_{EW} = 22.8$, the H_u contribution to Δ_{EW} is largest but is on the whole balanced by several comparable positive terms: again, one would not claim it as unnatural. The third column with $\mu = 300$ GeV, we see that the H_u contribution to Δ_{EW} is again the largest, but in this case now a value of μ must be selected as large positive to compensate and enforce that $m_Z = 91.2$ GeV: this case is starting to already become unnatural. By the fourth column with $\mu = 400$ GeV and $\Delta_{EW} = 51.5$, the fine-tuning is visually striking: the model is no longer natural. The unnaturalness is only accentuated in columns five and six for $\mu = 500$ and 600 GeV respectively.

To be conservative, it is evident that fine-tuning has set in for μ values ~ 300 – 400 GeV. For such cases one would expect the value of m_Z also to be in the 300 – 400 GeV range. With a value of $\mu = 350$ GeV as a conservative upper estimate, and with the contribution $\Delta_{EW}(\mu) = \mu^2 / (m_Z^2 / 2)$, we would then expect already values of $\Delta_{EW} > 30$ to be overly fine-tuned. This is somewhat above the values expected in the original BG paper where they adopted $\Delta_{BG}^{\max} = 10$. If we increase the mass bounds from BG by a factor $\sqrt{\Delta_{EW}^{\max} / 10}$ then we expect from BG with $m_t = 173.2$ GeV that $\mu < 350$ GeV and $m_{\tilde{g}} \lesssim 350$ GeV.

From scans over the popular mSUGRA/CMSSM [47,48] model, it is found that with $m_h = 125 \pm 2$ GeV, the lowest value of Δ_{EW} which can be obtained is ~ 100 [19,49,50]. In this case, the mSUGRA/CMSSM model is highly fine-tuned and is already ruled out. In addition, an assortment of other models—including mGMSB, mAMSB and mirage unification models—are also ruled out [19]. What remains is a region of NUHM2 parameter space where small $\mu \sim 100$ – 300 GeV is allowed and where highly mixed top squarks may live in the few TeV range. This region of NUHM2 parameter space is labeled as RNS, standing for models with radiatively driven natural supersymmetry [23,24]. RNS models are characterized by light

Higgsinos with mass $\sim \mu \sim 100$ – 300 GeV. The LSP is a Higgsino-like weakly interacting massive particles (WIMP) with a thermally produced underabundance of dark matter. However, solving the QCD sector naturalness problem via the axion [51] leads also to axion dark matter [52] so that one expects two dark matter particles: the axion along with a Higgsino-like WIMP [53]. Variants of this model with greater parameter freedom, such as nonuniversal gaugino masses leading to natural SUSY with bino-like or wino-like LSPs—are also allowed [54].

VI. MASS BOUNDS FROM NATURALNESS IN NUHM2

To derive sparticle mass bounds from the naturalness principle, we will generate SUSY spectra using ISAJET [55,56] in the two-parameter nonuniversal Higgs model [57] (NUHM2) which allows for very low values of $\Delta_{EW} < 10$. The parameter space is given by

$$m_0, m_{1/2}, A_0, \tan \beta, \mu, m_A, \quad (\text{NUHM2}). \quad (8)$$

The NUHM2 spectra and parameter spread versus Δ_{EW} were evaluated in Ref. [24] but with m_A restricted to < 1.5 TeV and $m_{1/2} < 2$ TeV. Here, we update these results by ensuring that we use a sufficiently large range of input parameters that our upper bounds on sparticle masses surely come from $\Delta_{EW} < 30$ rather than from artificial upper limits on scan parameters. Some previous mass bounds were extracted in Refs. [24,58,59]. Here, we enlarge the scan region to include

$$\begin{aligned} m_0 &: 0\text{--}20 \text{ TeV}, \\ m_{1/2} &: 0.3\text{--}3 \text{ TeV}, \\ -3 &< A_0/m_0 < 3, \\ \mu &: 0.1\text{--}1.5 \text{ TeV}, \\ m_A &: 0.15\text{--}20 \text{ TeV}, \\ \tan \beta &: 3\text{--}60. \end{aligned} \quad (9)$$

We require of our solutions that

- (i) electroweak symmetry be radiatively broken (REWSB),
- (ii) the neutralino \tilde{Z}_1 is the lightest MSSM particle,
- (iii) the light chargino mass obeys the model independent LEP2 limit, $m_{\tilde{W}_1} > 103.5$ GeV [14],
- (iv) LHC8 search bounds on $m_{\tilde{g}}$ and $m_{\tilde{q}}$ from the m_0 vs $m_{1/2}$ plane [8] are respected,
- (v) $m_h = 125 \pm 2$ GeV.

It is important to note in this section that some of our upper bounds come from the specific model we sample. For instance, the extracted upper bound on the gluino mass comes from RG running effects where the gluino mass feeds into the top-squark soft terms, and the top-squark soft

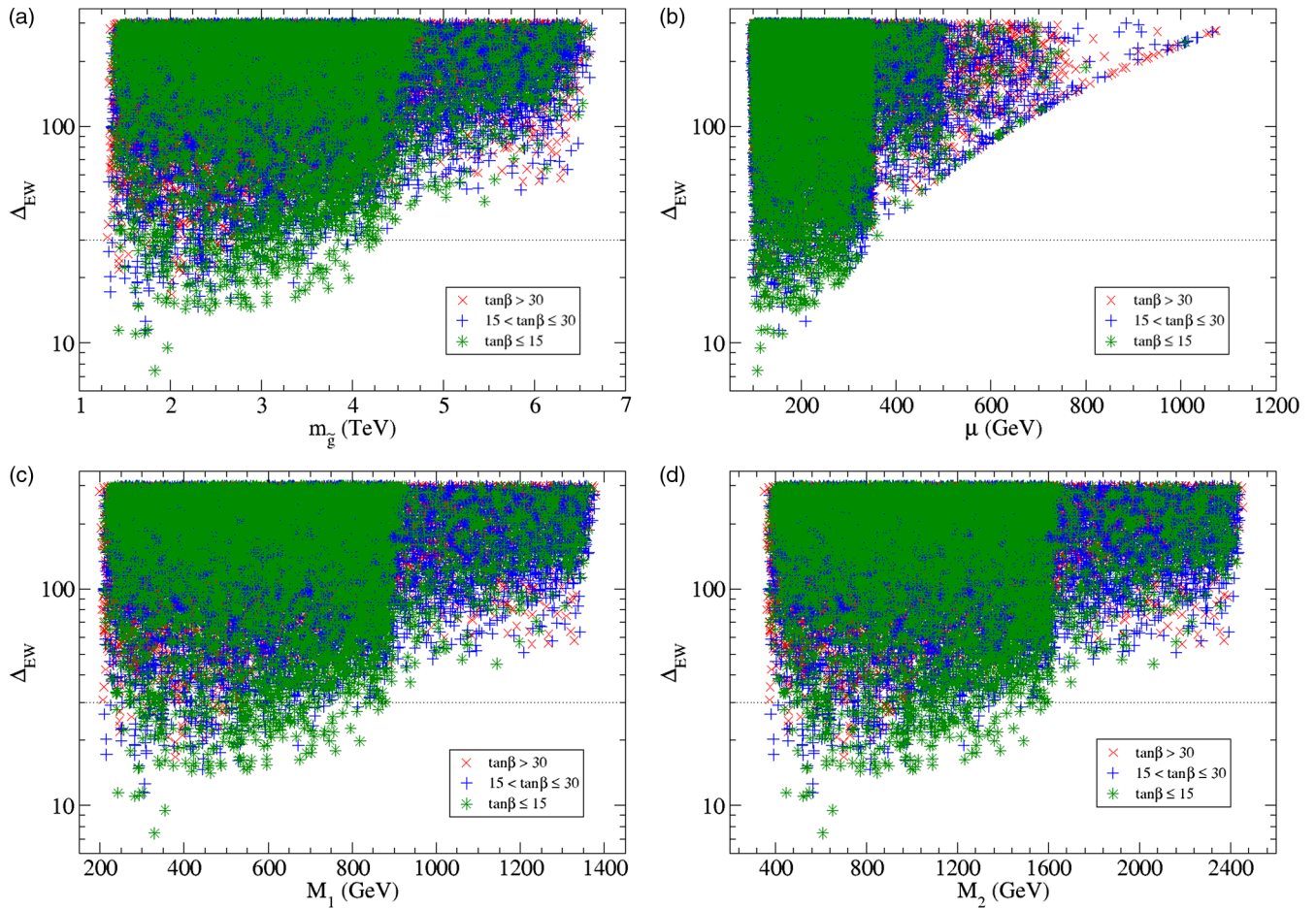


FIG. 2. Plot of Δ_{EW} vs $m_{\tilde{g}}$, μ , M_1 and M_2 from a scan over the NUHM2 model. Points with $\Delta_{EW} < 30$ (below dotted line) are considered natural.

terms are mainly constrained by the $\Sigma_u^H(\tilde{t}_{1,2})$ contributions to Δ_{EW} . In this respect also, Δ_{EW} is sensitive to high scale effects since it measures if a particular model defined by high scale parameters can generate the weak scale characterized by $m_{W,Z,h} \sim 100$ GeV. In the next section, we will discuss model-independent upper bounds which do not depend on high scale physics.

The first results of our scan are shown in Fig. 2. In frame (a), we plot Δ_{EW} vs $m_{\tilde{g}}$. The symbols are color-coded according to low (≤ 15), intermediate (15–30) and high (> 30) values of $\tan\beta$. From the plot, we see first that there is indeed an upper bound to $m_{\tilde{g}}$ provided by naturalness. If we enforce $\Delta_{EW} < 30$, then we find that

- (i) $m_{\tilde{g}} \lesssim 4$ TeV.

This is to be compared to the reach of LHC for gluinos via gluino pair production followed by cascade decays. For the case of heavy squarks $m_{\tilde{q}} \gg m_{\tilde{g}}$ and with $\sim 1000 \text{ fb}^{-1}$, LHC13 has a reach up to $m_{\tilde{g}} \sim 2$ TeV [60,61]. Thus, while natural SUSY may well be discovered by LHC13,¹⁰ there is

¹⁰For an overview of what natural SUSY looks like at LHC13, see Ref. [62].

also plenty of natural SUSY parameter space well beyond the LHC reach for $\tilde{g}\tilde{g}$ production. This bound may also be compared to the original BG result for $m_t = 173.2$ GeV and with $\Delta_{BG} < 30$: there it was found that $m_{\tilde{g}} \lesssim 350$ GeV. The discrepancy between results arises because BG evaluated Δ_{BG} within the four-parameter mSUGRA/CMSSM effective theory where m_0 , $m_{1/2}$, A_0 and B are assumed as independent. By recognizing the soft terms as dependent multiples of $m_{3/2}$, then using Eq. (7) we have $\Delta_{BG} \approx \Delta_{EW}$ and much larger values of $m_{\tilde{g}}$ are allowed while preserving naturalness. Our result may also be compared with Feng [38] who uses an upper bound of 1% fine-tuning in a multiparameter SUSY effective theory: he then finds $m_{\tilde{g}} \lesssim 1.4$ TeV, slightly beyond the latest bound of $m_{\tilde{g}} \lesssim 1.3$ TeV from LHC8 searches. If we scale this back to 3.3% fine-tuning to compare with our result, then Feng would obtain $m_{\tilde{g}} \lesssim 770$ GeV, well below the LHC8 lower limit on $m_{\tilde{g}}$.

In Fig. 2, we also show Δ_{EW} versus (b) the Higgsino mass μ and (c) and (d) versus the gaugino masses M_1 and M_2 . Since $m_{\tilde{w}_1} \sim m_{\tilde{z}_{1,2}} \sim |\mu|$ in models with a Higgsino-like LSP, then we expect that

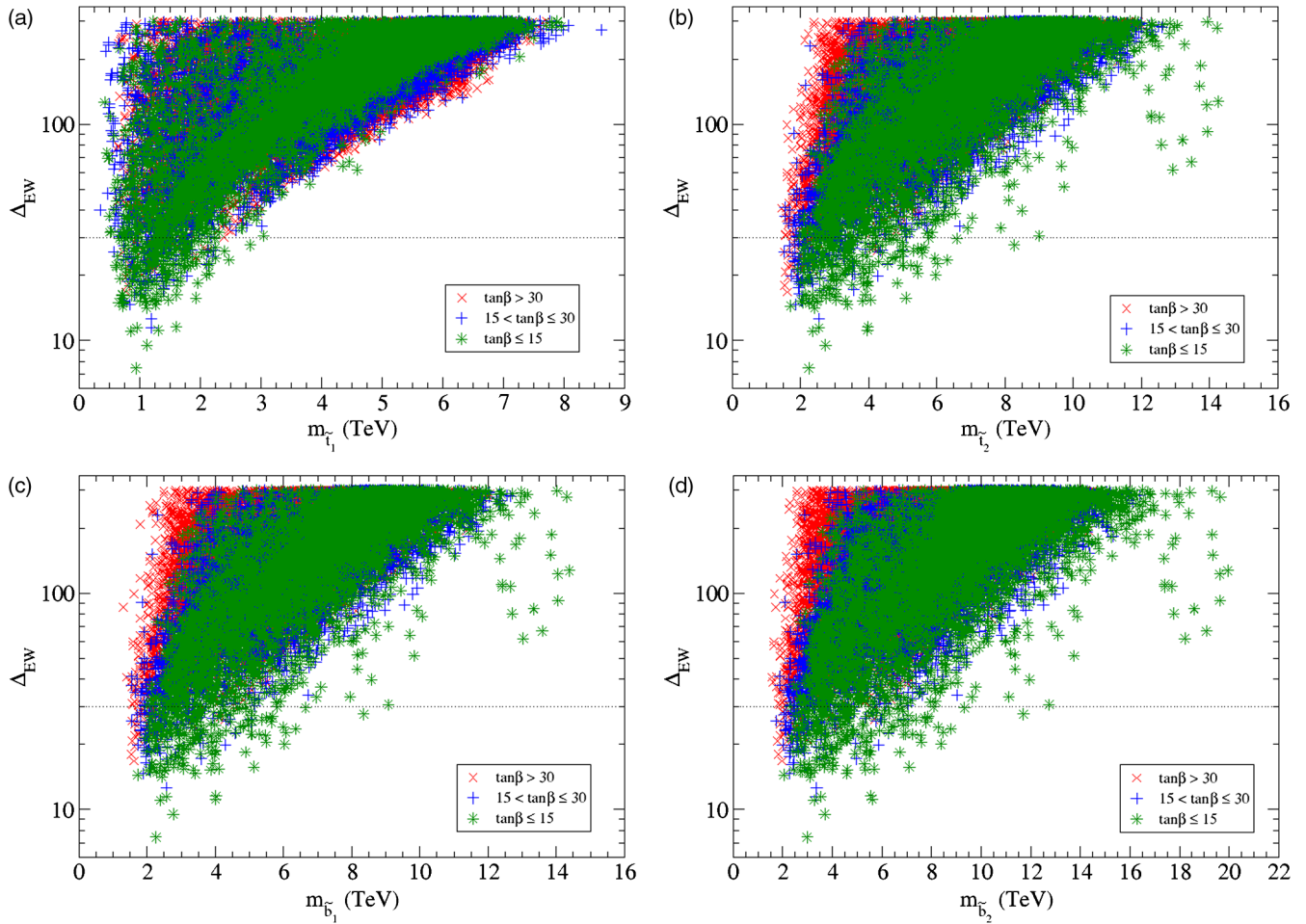


FIG. 3. Plot of Δ_{EW} vs $m_{\tilde{t}_1}$, $m_{\tilde{t}_2}$, $m_{\tilde{b}_1}$ and $m_{\tilde{b}_2}$ from a scan over the NUHM2 model.

(i) $m_{\tilde{W}_1}, m_{\tilde{Z}_{1,2}} \lesssim 350$ GeV (the lighter the better). While the Higgsino-like electro-weak-ino masses are necessarily not too far from $m_{Z,h}$, they are notoriously difficult to see at LHC due to their compressed spectrum [61,63]. A possible way forward may be via $pp \rightarrow \tilde{Z}_1 \tilde{Z}_2 g$ production followed by $\tilde{Z}_2 \rightarrow \mu^+ \mu^- \tilde{Z}_1$. In this case, the hard gluon initial state radiation serves as a trigger so that events containing soft dimuons may be visible above SM backgrounds [64–66]. In contrast, the required light Higgsinos should be easily visible at an e^+e^- collider operating with $\sqrt{s} > 2\mu$ [63,67] where also their masses and mixings can be extracted to high precision. In this, we are in accord with the conclusion of BG [10] that lepton colliders provide a more powerful probe of SUSY electroweak naturalness than do hadron colliders.

The bound extracted from frame (c) is that the bino mass $M_1 \lesssim 900$ GeV for $\Delta_{EW} < 30$. Since the NUHM2 model assumes gaugino mass unification, this translates to the mass on the third lightest neutralino \tilde{Z}_3 which is then mainly bino-like.

The bound on the wino mass M_2 shown in frame (d) translates to a bound on the wino-like electroweakinos

of $m_{\tilde{W}_2, \tilde{Z}_4} \lesssim 1600$ GeV. As noted in Refs. [61,68], wino pair production at LHC13 (via $\tilde{W}_2^\pm \tilde{Z}_4$ and $\tilde{W}_2^+ \tilde{W}_2^-$ production) forms the dominant *visible* reaction. In fact, the reach of LHC13 via the same-sign diboson (SSdB) signature ($pp \rightarrow \tilde{W}_2^\pm \tilde{Z}_4 \rightarrow W^\pm W^\pm + E_T$) exceeds the reach via gluino pair production for integrated luminosities $\gtrsim 300 \text{ fb}^{-1}$. The reach of LHC13 for wino pairs via the SSdB signature extends to $m_{\tilde{W}_2} \lesssim 680$ GeV.

In Fig. 3, we show updated upper bounds on third generation squark masses. From frame (a), we see that

(i) $m_{\tilde{t}_1} \lesssim 3$ TeV.

This upper bound is much higher than previous incarnations of natural SUSY based on large-log fine-tuning [45] (where it was claimed that naturalness required three third generation squarks with mass $m_{\tilde{t}_{1,2}, \tilde{b}_1} \lesssim 600$ GeV). The projected reach of LHC13 for $m_{\tilde{t}_1}$ in various simplified models extends up to $m_{\tilde{t}_1} \sim 1$ TeV. Thus, the lighter top squark may also lie well beyond LHC13 search capabilities with little cost to naturalness. From frames (b), (c) and (d), we find successively that $m_{\tilde{t}_2} \lesssim 9$ TeV, $m_{\tilde{b}_1} \lesssim 9$ TeV and $m_{\tilde{b}_2} \lesssim 10$ TeV.

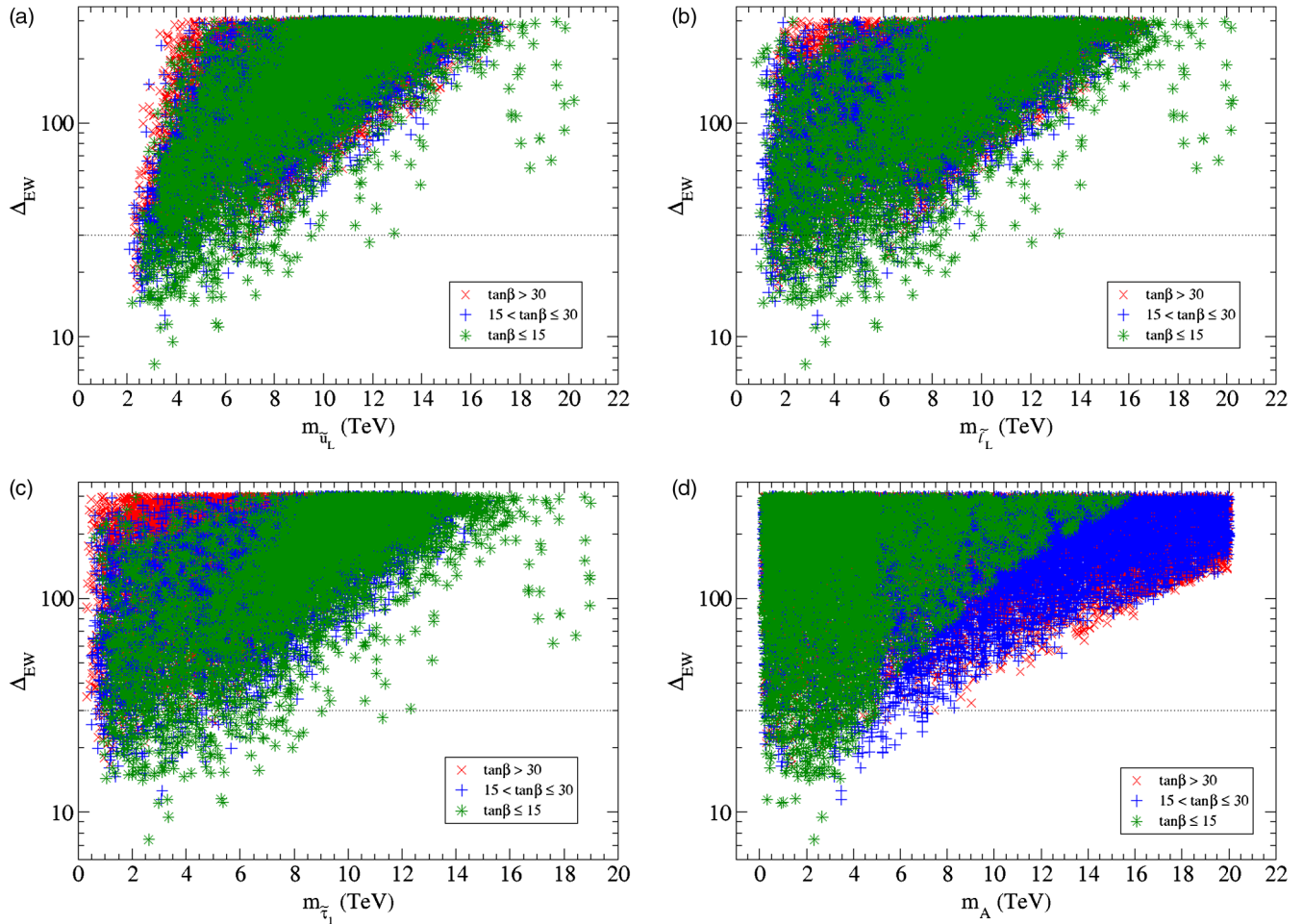


FIG. 4. Plot of Δ_{EW} vs $m_{\tilde{u}_L}$, $m_{\tilde{l}_L}$, $m_{\tilde{\tau}_1}$ and m_A from a scan over the NUHM2 model.

In Fig. 4 we show plots of Δ_{EW} versus various matter scalar masses (a) $m_{\tilde{u}_L}$, (b) $m_{\tilde{l}_L}$, (c) $m_{\tilde{\tau}_1}$ and (d) m_A . Frame (a) is typical of all first/second generation matter scalars. Here, we extract an upper bound of $m_{\tilde{u}_L} \lesssim 10$ TeV. The bound on first/second generation matter scalars arises from D -term contributions to Σ_u^u [24]. For certain mass degeneracy patterns listed in Ref. [69], these contributions nearly cancel amongst themselves. The limits become much stronger for nondegenerate matter scalars. The limits are also affected by two-loop RG effects where heavy first/second generation matter scalars feed into third generation and Higgs soft term evolution. In this case, large $m_0(1, 2)$ can drive $m_{H_u}^2$ to large instead of small negative values [70]. The limit on first/second generation sleptons, shown in frame (b), is similar. If we allow for nondegenerate generations, i.e. $m_0(1, 2) \neq m_0(3)$, then the upper bounds on first/second generation squarks and sleptons can increase to ~ 20 TeV [24].

In frame (c), we show Δ_{EW} vs $m_{\tilde{\tau}_1}$. In this case, the upper bound on third generation sleptons is also $m_{\tilde{\tau}_1} \lesssim 10$ TeV. An upper bound on m_A can be extracted from frame (d) of

Fig. 4. Here we find $m_A \lesssim 5(8)$ TeV for $\tan\beta < 15(50)$. Thus, the heavy Higgs bosons with mass $m_H \sim m_{H^\pm} \sim m_A$ may also be well beyond the reach of LHC13 at little cost to naturalness.

A. Comparison of original BG results to this paper

In Table I, we compare the upper limits on sparticle masses and the μ parameter extracted from the original BG paper [10] as compared to this paper. The BG results are presented for $m_t = 173.2$ GeV and scaled to impose $\Delta_{BG} < 30$ instead of $\Delta_{BG} < 10$. The BG results used m_0 , $m_{1/2}$, A_0 and μ as independent parameters whereas our results combine these contributions to m_Z^2 since each is computed as a multiple of $m_{3/2}$ in gravity mediation models. To include radiative corrections, we use the Δ_{EW} measure.

Since both groups use μ as an independent parameter, then both groups agree on the upper bound $\mu \lesssim 350$ GeV leading to relatively light Higgsinos: the closer to m_h the better. However, for other sparticle masses, then our results differ markedly. Whereas BG find $m_{\tilde{g}} \lesssim 350$ GeV, we find

TABLE I. Upper bounds on masses (in GeV) from naturalness with $\Delta < 30$ from original BG paper compared to Sec. VI of this paper in the NUHM2 model. The entries in parentheses would result if one allows for nondegenerate generations of soft scalar masses $m_0(1, 2) \neq m_0(3)$ [24].

Mass bound (GeV)	BG	This work
μ	350	350
$m_{\tilde{g}}$	350	4000
M_1	90	900
M_2	170	1700
$m_{\tilde{u}_R}$	700	10 000 (20 000)
$m_{\tilde{e}_R}$	520	10 000 (20 000)

$m_{\tilde{g}} \lesssim 4$ TeV—possibly well out of range of LHC13. Also, for the bino mass M_1 , BG find $M_1 \lesssim 90$ GeV while we find $M_1 \lesssim 900$ GeV. For the wino mass M_2 , BG find $M_2 \lesssim 170$ GeV (leading to the suggestion that charginos should appear at LEP2 if SUSY is not fine-tuned) while we find $M_2 \lesssim 1700$ GeV (possibly out of range of LHC13 even via

wino pair production with decays to same-sign dibosons [68]). Meanwhile, for matter scalars, BG found $m_{\tilde{u}_R} \lesssim 700$ GeV whereas we find $m_{\tilde{u}_R} \lesssim 10$ TeV. If we allow for nondegenerate matter scalar generations [$m_0(1, 2) \neq m_0(3)$] then our limit can increase to ~ 20 TeV [24]. Likewise, BG found $m_{\tilde{e}_R} \lesssim 520$ GeV whereas we expect $m_{\tilde{e}_R} \lesssim 10$ TeV (20 TeV for split families).

VII. UPPER BOUNDS FROM THE 19 PARAMETER PMSSM

The mass bounds from the previous section depend on (reasonable) assumptions about high scale physics which are implicit in the NUHM2 model. The previous NUHM2 bounds were derived from requiring that no contributions to the renormalization-group-improved one-loop scalar potential be far larger than $m_Z^2/2$. The RG-improved scalar potential contains in fact leading two-loop terms since the parameters entering the scalar potential contain the effects of RG running. For instance, the bound on the gluino mass arises mainly from its RG contribution to the stop masses: a

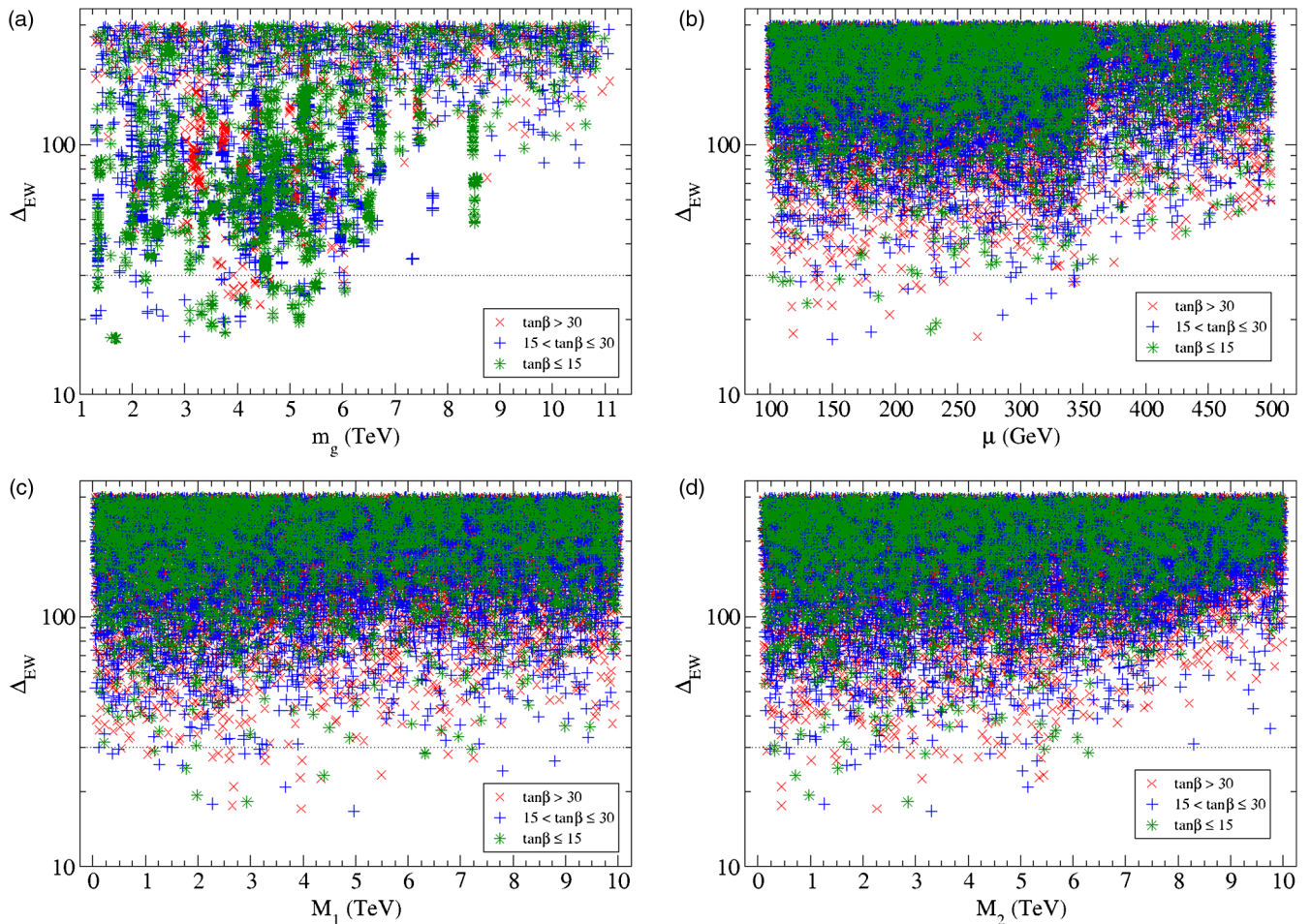


FIG. 5. Plot of Δ_{EW} vs $m_{\tilde{g}}$, μ , M_1 and M_2 from a scan over the 19 weak scale pMSSM parameters. Points with $\Delta_{EW} < 30$ (below dotted line) are considered natural.

large value of M_3 pushes $m_{\tilde{t}_{1,2}}$ to large values leading to large $\Sigma_u^u(\tilde{t}_{1,2})$ contributions to m_Z . Likewise, other soft terms contribute to the evolution of $m_{H_u}^2$ to small negative values at the weak scale.

It is popular in recent years to dispense with RG running and examine physics within the phenomenological MSSM, a model with 19 free weak scale parameters [33]. Results from the pMSSM will look in some cases very different from those obtained with high scale models even though in some sense the pMSSM contains models like NUHM2, and even though a given spectra generated within either of the NUHM2 or the pMSSM models will yield up exactly the same value of Δ_{EW} . The main difference is that the two-loop contribution to the scalar potential arising from RG running of M_3 will no longer occur, thus obviating any bound on the gluino mass. In this case, we add in the explicit leading two-loop terms of order $\alpha_t \alpha_s$, as computed by Dedes and Slavich [71]. These terms contain sensitivity to $m_{\tilde{g}}$ and to $m_{\tilde{t}_{1,2}}$.

To obtain mass bounds from the pMSSM, we implement a scan over the 19-dimensional weak scale parameter space with the following limits:

- (i) $m_{\tilde{t}_L}, m_{\tilde{t}_R}, m_{\tilde{b}_R}, m_{\tilde{\tau}_L}, m_{\tilde{\tau}_R}$: 0.2–20 TeV,
- (ii) $m_{\tilde{u}_L}, m_{\tilde{d}_R}, m_{\tilde{d}_R}, m_{\tilde{e}_L}, m_{\tilde{e}_R}$: 0.1–20 TeV,
- (iii) A_t, A_b, A_τ : $-40 \rightarrow +40$ TeV,
- (iv) M_1 : 0.05–10 TeV, M_2 : 0.1–10 TeV, M_3 : 0.4–10 TeV,
- (v) μ : 100–500 GeV, m_A : 0.15–20 TeV,
- (vi) $\tan\beta$: 3–60.

We actually input the pMSSM parameters at a scale $\Lambda_{\text{pMSSM}} = 20$ TeV—just above the maximal soft masses. This ensures the reduced scale dependence of the scalar potential from the interplay between the RG running of the soft terms and the $\log(Q^2)$ dependence of the loop contributions $\Sigma_u^u(i)$ and $\Sigma_d^d(j)$. The contributions of $\Sigma_d^d(i)$ to Δ_{EW} are suppressed by $\tan^2\beta$ and so typically are of little consequence.

The pMSSM tree-level bounds from $\Delta_{EW} < 30$ can be read off directly from Eq. (4) without the need for any scan:

- (i) $\mu \lesssim 350$ GeV,
- (ii) $m_{H_u}(\text{weak}) \lesssim 350$ GeV,
- (iv) $m_{H_d} \lesssim 350 \text{ GeV } \tan\beta$.

For large m_{H_d} , then $m_{H_d} \approx m_A$ so the latter bound translates to a bound on m_A .

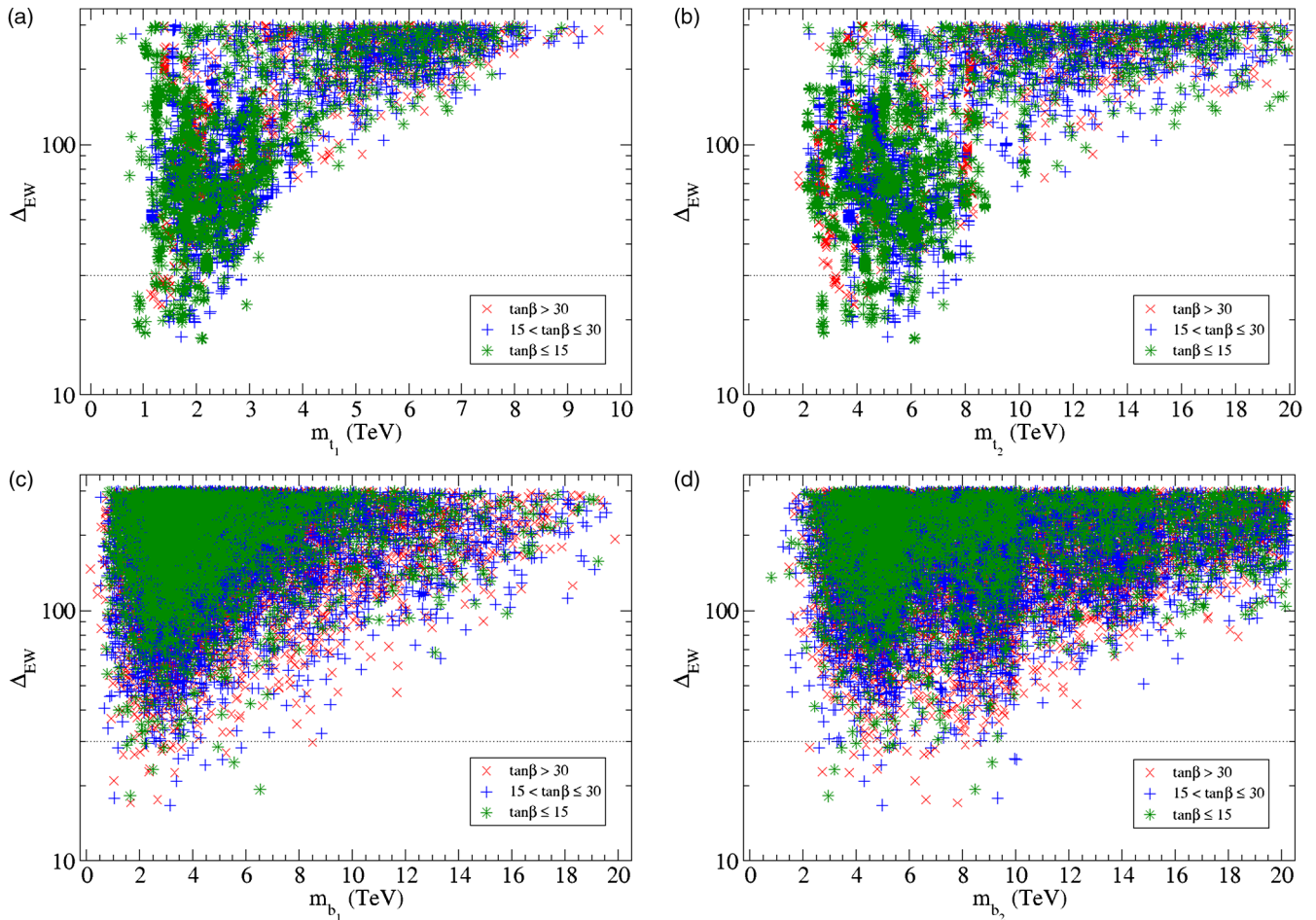


FIG. 6. Plot of Δ_{EW} vs $m_{\tilde{t}_1}$, $m_{\tilde{t}_2}$, $m_{\tilde{b}_1}$ and $m_{\tilde{b}_2}$ from a scan over 19 weak scale pMSSM parameters.

In Fig. 5, we plot the value of Δ_{EW} vs the same parameters as in Fig. 2: (a) $m_{\tilde{g}}$, (b) μ , (c) M_1 and (d) M_2 . From frame (a) we see a very important result: in the pMSSM, the bound on $m_{\tilde{g}}$ for $\Delta_{\text{EW}} < 30$ has moved up to about 7 TeV, well beyond what was obtained for the NUHM2 model. This bound arises after the inclusion of the order $\alpha_t \alpha_s$ two-loop contribution to the scalar potential which includes sensitivity to $m_{\tilde{g}}$ [71].

From frame (b), we see that, as expected, μ is once again bounded by $\mu \lesssim 350$ GeV for $\Delta_{\text{EW}} < 30$, as is required by the tree-level contribution to Eq. (4). In frame (c), we plot Δ_{EW} vs the bino mass M_1 . For the pMSSM, mass bounds on M_1 arise from the $\Sigma_u^u(\tilde{Z}_i)$. Here, we see that M_1 can range as high as 9 TeV—far beyond the bounds obtained in the NUHM2 model where gaugino mass unification is required. In that case, the upper limit on $m_{\tilde{g}} \lesssim 4$ TeV translates to a bound on $M_1 \lesssim 0.8$ TeV. Likewise, in frame (d) we plot Δ_{EW} vs wino mass M_2 . In this case, we find $M_2 \lesssim 6$ TeV. This bound mainly arises from the contributions $\Sigma_u^u(\tilde{W}_i)$. It is also far beyond the mass bound from NUHM2 where $M_2 \lesssim 1.6$ TeV was found.

In Fig. 6 we display values of Δ_{EW} vs (a) $m_{\tilde{t}_1}$, (b) $m_{\tilde{t}_2}$, (c) $m_{\tilde{b}_1}$ and (d) $m_{\tilde{b}_2}$. From frame (a), we find that $m_{\tilde{t}_1} \lesssim 3.5$ TeV, just slightly larger than the bound arising in the NUHM2 model. This bound arises mainly due to the contributions $\Sigma_u^u(\tilde{t}_{1,2})$ to the scalar potential. In frame (b), we find that $m_{\tilde{t}_2} \lesssim 10$ TeV. This again is slightly beyond the bound arising from the NUHM2 case with unified matter scalars at m_{GUT} . From frames (c) and (d), we find that $m_{\tilde{b}_1} \lesssim 9$ TeV and $m_{\tilde{b}_2} \lesssim 10$ TeV. These results are in rough accord with values obtained from the NUHM2 model.

In Fig. 7, we attempt to extract upper mass bounds on squarks, sleptons, staus and heavy Higgs bosons in analogy to Fig. 4. From frame (a), we find naively that $m_{\tilde{u}_L} \lesssim 10$ TeV. This mass bound arises from D -term contributions to first/second generation scalar masses that enter the scalar potential via $\Sigma_u^u(\tilde{u}_L)$. As pointed out in Ref. [69], these D -term contributions all cancel amongst themselves *provided that one of several mass degeneracy patterns exist*: (i) separately squark and slepton mass degeneracy, (ii) separately left- and right-sfermion

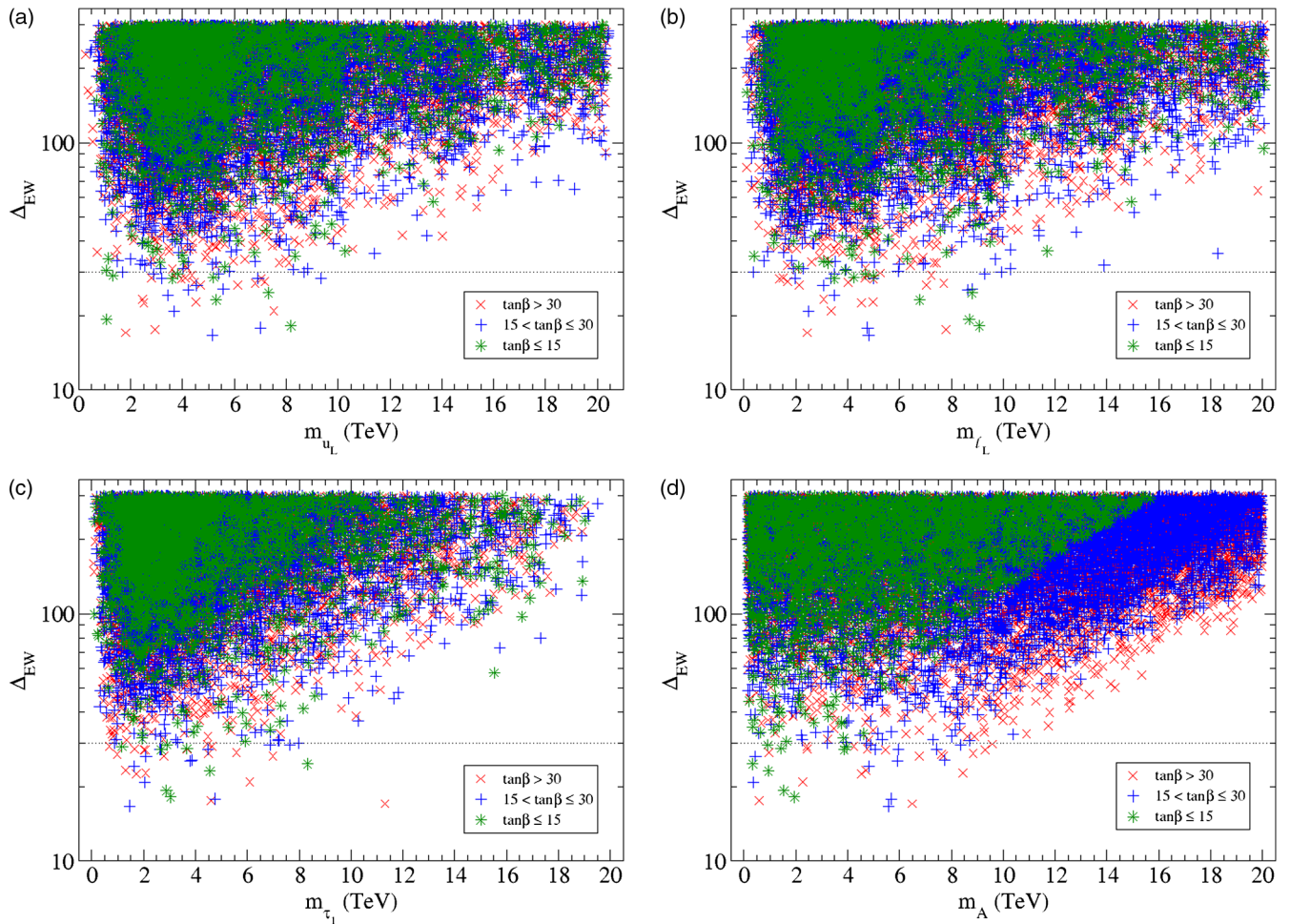


FIG. 7. Plot of Δ_{EW} vs $m_{\tilde{u}_L}$, $m_{\tilde{t}_L}$, $m_{\tilde{t}_1}$ and m_A from a scan over 19 weak scale pMSSM parameters.

degeneracy, (iii) degeneracy within $SU(5)$ multiplets and (iv) degeneracy within an entire generation, as expected in $SO(10)$ GUTs. In these cases, the contributions—which are all proportional to weak isospin and hypercharge assignments—necessarily sum to zero for degenerate masses. When these contributions thus sum to zero, then there are no bounds on first/second generation squark and slepton masses. However, since it is highly improbable to generate these degeneracy patterns from a random pMSSM scan, then mass bounds do arise from our random scan. As seen from frame (a), we expect $m_{\tilde{u}_L} \lesssim 10$ TeV. But this mass bound would disappear if we invoked degeneracy conditions amongst the physical masses within any of the patterns listed above. Likewise, in frame (b), we see that $m_{\tilde{\ell}_L} \lesssim 10$ TeV and from frame (c) we expect $m_{\tilde{\tau}_1} \lesssim 9$ TeV. The mass bound on m_A which arises from the loop contributions $\Sigma_u^u(h, H, H^\pm)$ are shown in frame (d). These constraints are actually somewhat stronger than the naive tree-level constraint of $m_A \lesssim 350 \text{ GeV} \tan\beta$ which is ~ 18 TeV for large $\tan\beta \sim 50$. Instead, we find $m_A \lesssim 10$ TeV from our scan over 19 weak scale pMSSM parameters.

A. Comparison between pMSSM and SUGRA19 model

It may be worthwhile to compare the preceding results from the 19 parameter pMSSM model—with inputs defined at the weak scale—with results from Ref. [72] where naturalness was examined in the context of the SUGRA19 model with 19 input parameters defined at the GUT scale. The goal of Ref. [72] was to see how low in Δ_{EW} one might go within the context of a general SUGRA model, but not to establish upper bounds (which require a thorough rather than a focused parameter space scan). To compare sparticle mass upper bounds between pMSSM and SUGRA19, we have rerun SUGRA19 including the aforementioned two-loop Σ_u^u corrections with a thorough parameter space scan. In both the pMSSM model and the SUGRA19 model, the SUSY μ parameter is bounded as $\mu < 350$ GeV for $\Delta_{\text{EW}} < 30$ since this quantity enters the scalar potential at tree level.

The results from the SUGRA19 model are shown in Fig. 8 for Δ_{EW} versus (a) $m_{\tilde{g}}$, (b) $m_{\tilde{t}_1}$, (c) $m_{\tilde{t}_2}$ and (d) $m_{\tilde{b}_1}$. The upper bound on the gluino mass is very similar in the two cases where we find $m_{\tilde{g}} \lesssim 7$ TeV. Also, for both the SUGRA19 and pMSSM models, the third generation

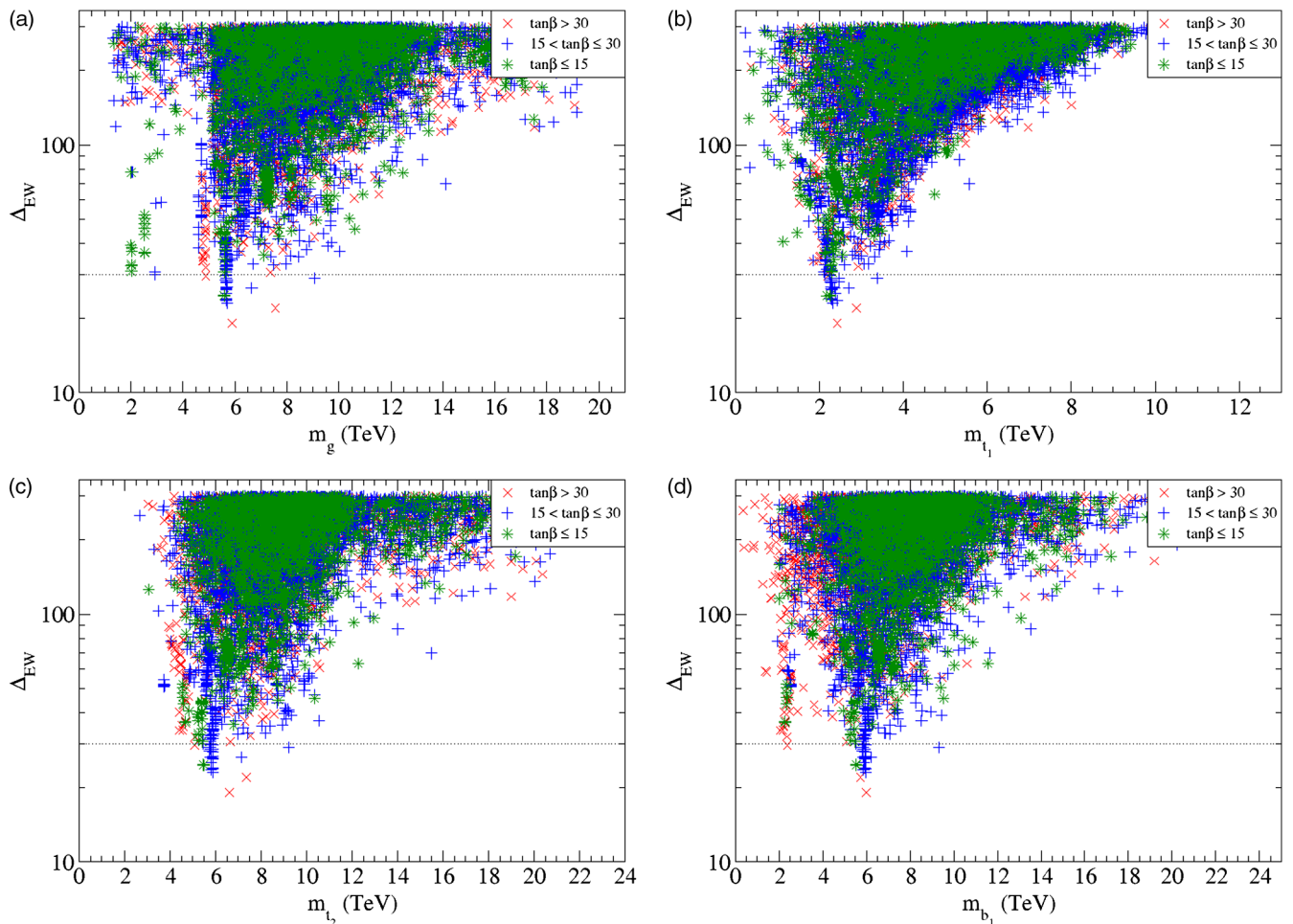


FIG. 8. Plot of Δ_{EW} vs $m_{\tilde{g}}$, $m_{\tilde{t}_1}$, $m_{\tilde{t}_2}$ and $m_{\tilde{b}_1}$ from a scan over the SUGRA19 model.

squark masses have similar upper bounds: $m_{\tilde{t}_1} \lesssim 3\text{--}3.5$ TeV and $m_{\tilde{t}_2, \tilde{b}_2} \lesssim 8\text{--}10$ TeV.

From this comparison, and in the spirit of providing a target for experimenters seeking to verify or disprove SUSY, we would conclude that a negative search for light Higgsinos with mass $\lesssim 350$ GeV would rule out naturalness in the context of the MSSM (more complicated beyond-the-MSSM extensions could always be built to circumvent these bounds [25–27]). Thus, nonobservation of light Higgsinos would rule out both high scale and weak scale renditions of SUSY based on the MSSM. Alternatively, failure to find a gluino with mass $m_{\tilde{g}} \lesssim 4$ TeV would rule out constrained SUSY models such as NUHM2 with unified soft parameters defined as high as $Q = m_{\text{GUT}}$. Colliders with the ability to probe beyond $m_{\tilde{g}} \sim 7$ TeV would be needed to test/exclude gluino pair production within the pMSSM or SUGRA19 context [73].

VIII. CONCLUSIONS

In this paper, our goal was to sharpen the upper bounds on sparticle masses arising from naturalness in order to provide a target for experimenters seeking to confirm or rule out the weak scale supersymmetry hypothesis.

While most sparticle search results are presented as lower bounds in simplified or complete model parameter space, the question arises: how far out in parameter space ought one to go before discovering weak scale SUSY or claiming it is dead? While earlier papers by others have presented naturalness as a subjective, fuzzy and model-dependent notion, instead here we argue that naturalness is

- (i) objective,
- (ii) model independent in that different models giving rise to the same spectra have the same value of naturalness, and
- (iii) predictive.

The previous confusion on this subject arose from what constitutes independent model parameters. In the case of gravity mediation, for any given hidden sector the soft terms are calculable as multiples of the gravitino mass $m_{3/2}$, i.e. they are *dependent*. By appropriately combining dependent terms, then the BG measure implies the same general consequences as the model *independent* electro-weak measure Δ_{EW} . We show visually that fine-tuning already arises at $\Delta_{\text{EW}} \sim 20\text{--}30$. To be conservative, we take $\Delta_{\text{EW}} < 30$ to derive upper bounds on parameters and sparticle masses.

In Sec. VI, we sharpened up previous bounds on sparticle masses by increasing the range of parameters enough to ensure that upper bounds arose from $\Delta_{\text{EW}} < 30$ and not from some artificial cutoff imposed on our scan limits. For the NUHM2 model which allows SUGRA grand unification and values of Δ_{EW} below 10, we found $m_{\tilde{g}} \lesssim 4$ TeV, well beyond the reach of even high luminosity LHC. This bound is much higher than previous

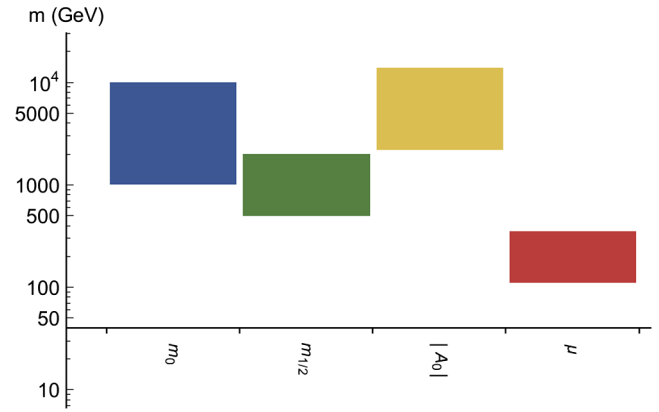


FIG. 9. Range of NUHM2 model parameters allowed by naturalness with $\Delta_{\text{EW}} < 30$.

estimates which assumed that the various soft SUSY breaking terms are independent. Alternatively, we find the superpotential μ term to be $\mu \lesssim 350$ GeV. The range of NUHM2 input parameters which are allowed is shown in Fig. 9.

The allowed ranges of sparticle masses from NUHM2 are shown in Fig. 10 as the colored histograms. As remarked before, the all-important gluino mass can range from $m_{\tilde{g}} \sim 1.3\text{--}4$ TeV. Third generation squarks, which were argued to exist in the sub-TeV regime in previous natural SUSY papers, are found to be consistent with naturalness when $m_{\tilde{t}_1} \lesssim 3$ TeV while $m_{\tilde{t}_2, \tilde{b}_1} \lesssim 9$ TeV and $m_{\tilde{b}_2} \lesssim 10$ TeV. A large A_t parameter here acts to reduce EW fine-tuning whilst lifting m_h up to ~ 125 GeV. The manifestation of large A_t is a splitting of the top-squark mass eigenstates. First and second generation sfermions can have masses ranging into the 10 TeV regime so long as they are sufficiently degenerate that naturalness contributions from D -terms largely cancel amongst themselves

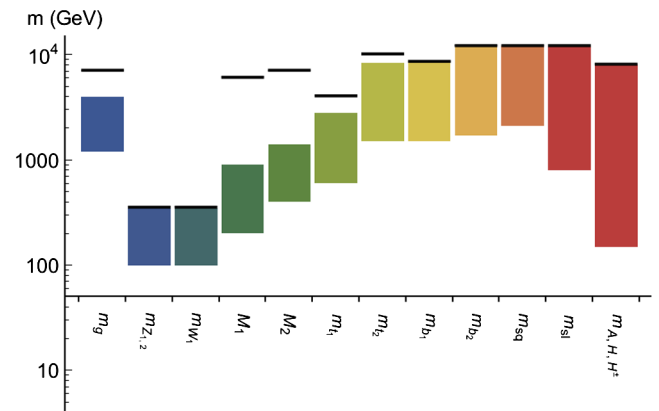


FIG. 10. Range of sparticle masses allowed by naturalness within NUHM2 model with $\Delta_{\text{EW}} < 30$. The black bars show upper bounds from the pMSSM model with 19 weak scale parameters.

[69]. Such heavy matter scalars provide a decoupling solution to the SUSY flavor and CP problems [21] and if their mass is comparable to $m_{3/2}$, then one expects a decoupling solution to the gravitino problem as well. The heavy Higgs bosons A , H and H^\pm can range up to the 5–8 TeV level. While such heavy sparticle and Higgs masses are consistent with naturalness, typically we do not expect large deviations from SM rates in rare decay branching fraction measurements such as $B_s \rightarrow \mu^+ \mu^-$ or $b \rightarrow s\gamma$ from natural SUSY [24] due to the presence of heavy mediators.

We have also extracted mass bounds on sparticles by requiring $\Delta_{EW} < 30$ in a scan over the 19 dimensional weak scale parameter set of the pMSSM. These bounds are shown as black lines in Fig. 10 or as arrows when no bound arises. The pMSSM bounds on scalar masses tend to be comparable to those from the NUHM2 model. However, bounds on gaugino masses are severely different. By including leading two-loop contributions to the scalar potential, we find a bound of $m_{\tilde{g}} < 7$ TeV arises in the pMSSM. Also, the bounds on the bino mass $M_1 \lesssim 9$ TeV and wino mass $M_2 \lesssim 6$ TeV—which arise from neutralino and chargino loops—are much higher than the corresponding upper bounds extracted from the NUHM2 model. A comparison of upper bounds extracted from NUHM2 and pMSSM is listed in Table II.

Our results have important implications for future particle physics facilities. Even the high luminosity LHC can explore only about half of natural SUSY parameter space. However, if we require a more stringent naturalness condition of $\Delta_{EW} \lesssim 10$ then $m_{\tilde{g}} \lesssim 2$ TeV and the *most natural* region of parameter space should be accessible to

TABLE II. Upper bounds on masses (in TeV) from naturalness with $\Delta_{EW} < 30$ from a scan over the NUHM2 model versus a scan over the 19 weak scale parameter pMSSM. The entries in parentheses would result if one allows for nondegenerate generations of soft scalar masses $m_0(1, 2) \neq m_0(3)$ [24]. The lack of bounds after the slash symbol arise in the case where highly degenerate squark and slepton masses develop [69].

Mass	NUHM2	pMSSM
μ	0.35	0.35
m_{H_u} (weak)	0.35	0.35
m_A	5–8	10
M_1	0.9	9
M_2	1.6	6
$m_{\tilde{g}}$	4	7
$m_{\tilde{t}_1}$	3	3
$m_{\tilde{t}_2}$	9	9
$m_{\tilde{b}_1}$	9	9
$m_{\tilde{b}_2}$	10	10
$m_{\tilde{q}}$	10 (20)	10/none
$m_{\tilde{z}}$	10 (20)	10/none

LHC13 (LHC13 has a projected 5σ discovery reach to $m_{\tilde{g}} \sim 2$ TeV for 300–1000 fb $^{-1}$ of data [60]).

The key feature of naturalness—that quasidegenerate Higgsinos lie in the 100–350 GeV mass range—highly motivates the construction of an e^+e^- collider which can operate with $\sqrt{s} > 2\mu$. Such a machine, constructed initially as a Higgs factory, would turn out to be also a *Higgsino factory* which would usher in the era of SUSY discovery while simultaneously elucidating the nature of dark matter. In this case, we would expect it to consist of an admixture of Higgsino-like WIMPs and axions [53].

ACKNOWLEDGMENTS

This work was supported in part by the U.S. Department of Energy, Office of High Energy Physics.

APPENDIX: APPENDIX

In this Appendix, we present some details about the radiative contributions $\Sigma_u^u(i)$ to the naturalness measure Δ_{EW} .

1. Limits from $\Sigma_u^u(\tilde{t}_{1,2})$

Usually, the dominant contributions to Σ_u^u come from the top squarks, owing to the large value of the top-squark Yukawa coupling f_t . The top-squark contributions are given by [23,24]

$$\Sigma_u^u(\tilde{t}_{1,2}) = \frac{3}{16\pi^2} F(m_{\tilde{t}_{1,2}}^2) \left[f_t^2 - g_Z^2 \mp \frac{f_t^2 A_t^2 - 8g_Z^2 (\frac{1}{4} - \frac{2}{3}x_W) \Delta_t}{m_{\tilde{t}_2}^2 - m_{\tilde{t}_1}^2} \right], \quad (\text{A1})$$

where $\Delta_t = (m_{\tilde{t}_L}^2 - m_{\tilde{t}_R}^2)/2 + M_Z^2 \cos 2\beta (\frac{1}{4} - \frac{2}{3}x_W)$, $x_W \equiv \sin^2 \theta_W$ and where

$$F(m^2) = m^2 \left(\log \frac{m^2}{Q^2} - 1 \right), \quad (\text{A2})$$

with the optimized scale choice $Q^2 = m_{\tilde{t}_1} m_{\tilde{t}_2}$. In the denominator of Eq. (A1), the tree-level expressions for $m_{\tilde{t}_{1,2}}^2$ should be used.

In Fig. 11, we plot out the $\Sigma_u^u(\tilde{t}_{1,2})$ contributions to Δ_{EW} in the weak scale $m_{\tilde{t}_R}$ vs A_t plane where we take $m_{\tilde{t}_L} = 2.6m_{\tilde{t}_R}$ which is typical for RNS models. We also adopt $\tan \beta = 10$, $\mu = 150$ GeV and $f_t = 0.8365$. In frame (a), the blue shaded region bounded by the green contour has $\Delta_{EW}(\tilde{t}_1) < 30$. For $A_t \sim 0$, then $m_{\tilde{t}_R} \lesssim 2$ TeV although for this value of A_t it is essentially impossible to generate m_h as high as 125 GeV [74]. For large stop mixing, i.e. large $|A_t|$, then there still exist bands of low $\Delta_{EW}(\tilde{t}_1)$ at large $|A_t|$ and $m_{\tilde{t}_R} \sim 1$ TeV which occur where the mass eigenvalue $m_{\tilde{t}_1}$ becomes very small, ~ 100 GeV, so that $F(m_{\tilde{t}_1}^2)$ is suppressed. Alternatively, the low $\Delta_{EW}(\tilde{t}_1)$ bands at large

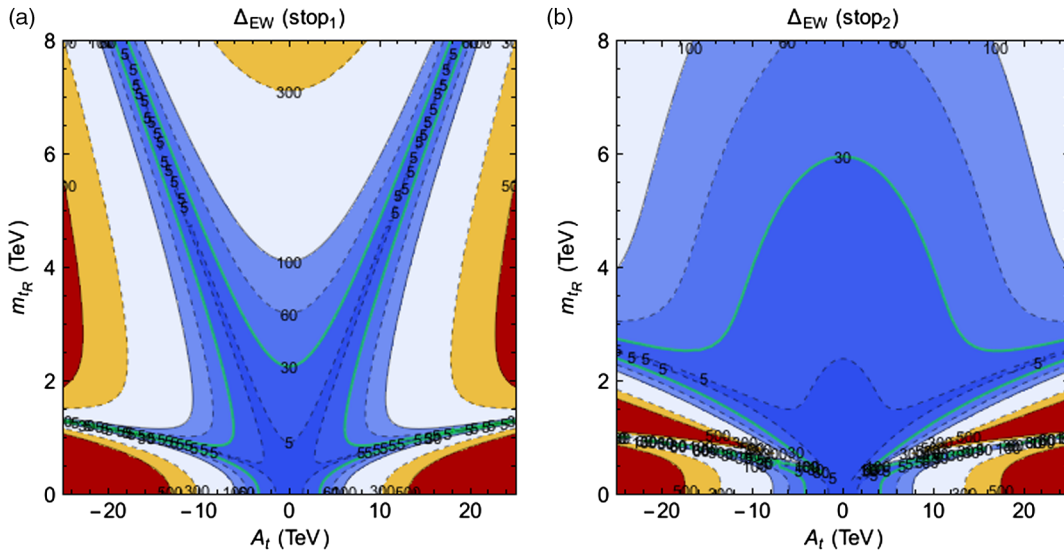


FIG. 11. Contour plot of (a) $\Delta_{EW}(\tilde{t}_1)$ from $\Sigma_u^u(\tilde{t}_1)$ and (b) $\Delta_{EW}(\tilde{t}_2)$ from $\Sigma_u^u(\tilde{t}_2)$ in the weak scale $m_{\tilde{t}_R}$ vs A_t plane. The curves correspond to fixed values of $\Delta_{EW}(\tilde{t}_{1,2})$ as labeled.

$m_{\tilde{t}_R}$ and large A_t occur due to cancellations in the square bracket of Eq. (A1).

In frame (b), where $\Delta_{EW}(\tilde{t}_2)$ is shown, we again see large regions of suppressed fine-tuning contributions. Here, $m_{\tilde{t}_R} \lesssim 6$ TeV is required for $\Delta_{EW}(\tilde{t}_2) < 30$ although sidebands extend out to large $|A_t|$ at $m_{\tilde{t}_R} \sim 1$ and 2.5 TeV. The upper band occurs where $m_{\tilde{t}_2}/m_{\tilde{t}_1} \sim e$ so that the log term

in $F(m_{\tilde{t}_2}^2)$ cancels. The main point is that regions exist with large enough $|A_t|$ (so that $m_h \rightarrow 125$ GeV) and $m_{\tilde{t}_R} \sim 1$ –3 TeV where both $\Delta_{EW}(\tilde{t}_{1,2})$ become small [23,24]. For higher values of $m_{\tilde{t}_R}$, one or the other of $\Delta_{EW}(\tilde{t}_{1,2})$ necessarily becomes > 30 , leading to fine-tuning.

Since both $\Sigma(\tilde{t}_1)$ and $\Sigma(\tilde{t}_2)$ must be small, we show in Fig. 12 the resulting green contour from requiring $\max[\Delta_{EW}(\tilde{t}_1), \Delta_{EW}(\tilde{t}_2)] < 30$. These combined results show that $m_{\tilde{t}_R}$ is bounded from above by about 4.5 TeV. The region below the thick black dashed contour is where $m_{\tilde{t}_1} < m_t$.

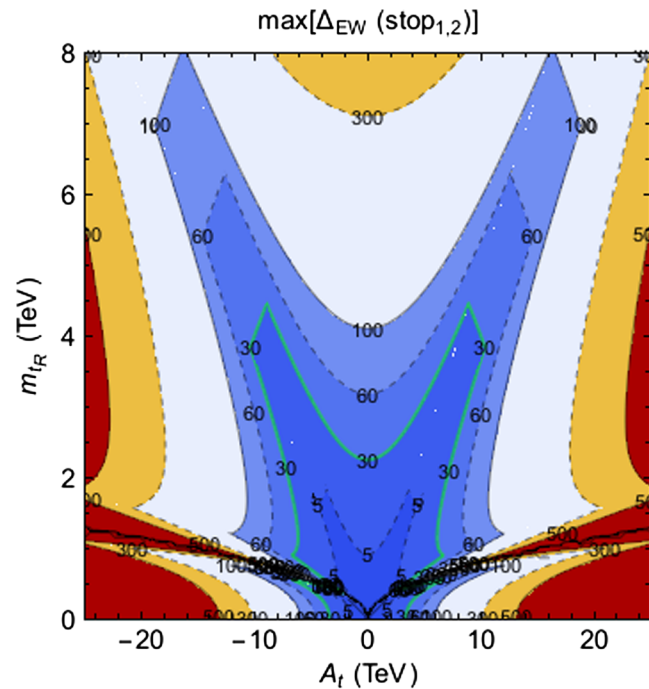


FIG. 12. Contour plot of $\max[\Delta_{EW}(\tilde{t}_1), \Delta_{EW}(\tilde{t}_2)]$ in the weak scale $m_{\tilde{t}_R}$ vs A_t plane. The region below the thick dashed black contour is where $m_{\tilde{t}_1} < m_t$.

2. Limits from $\Sigma_u^u(\tilde{b}_{1,2})$

In Fig. 13, we plot the contributions to $\max[\Delta_{EW}(\tilde{b}_1), \Delta_{EW}(\tilde{b}_2)]$ from the $\tilde{b}_{1,2}$ squarks. We plot for $\tan\beta = 10$ and $m_{\tilde{b}_L} = 0.72m_{\tilde{b}_R}$ but in the $m_{\tilde{b}_R}$ vs μ plane. For b -squark contributions, we have

$$\Sigma_u^u(\tilde{b}_{1,2}) = \frac{3}{16\pi^2} F(m_{\tilde{b}_{1,2}}^2) \left[g_Z^2 \mp \frac{f_b^2 \mu^2 - 8g_Z^2(\frac{1}{4} - \frac{1}{3}x_W)\Delta_b}{m_{\tilde{b}_2}^2 - m_{\tilde{b}_1}^2} \right], \quad (\text{A3})$$

where $\Delta_b = (m_{\tilde{b}_L}^2 - m_{\tilde{b}_R}^2)/2 - M_Z^2 \cos 2\beta(\frac{1}{4} - \frac{1}{3}x_W)$. We take $f_b = 0.13$ and $Q^2 = m_{\tilde{t}_1} m_{\tilde{t}_2}$ with $m_{\tilde{t}_1} = 1275$ GeV and $m_{\tilde{t}_2} = 3690$ GeV.

From Fig. 13, the contribution $\Delta(\tilde{b}_1)$ can become small even for very large $m_{\tilde{b}_R} \sim 20$ TeV, but only for large/fine-tuned values of μ . In contrast, $\Delta_{EW}(\tilde{b}_2) < 30$ only for $m_{\tilde{b}_R} \lesssim 7$ TeV. The latter provides a solid upper limit on $m_{\tilde{b}_2}$ which is usually $\sim m_{\tilde{b}_R}$.

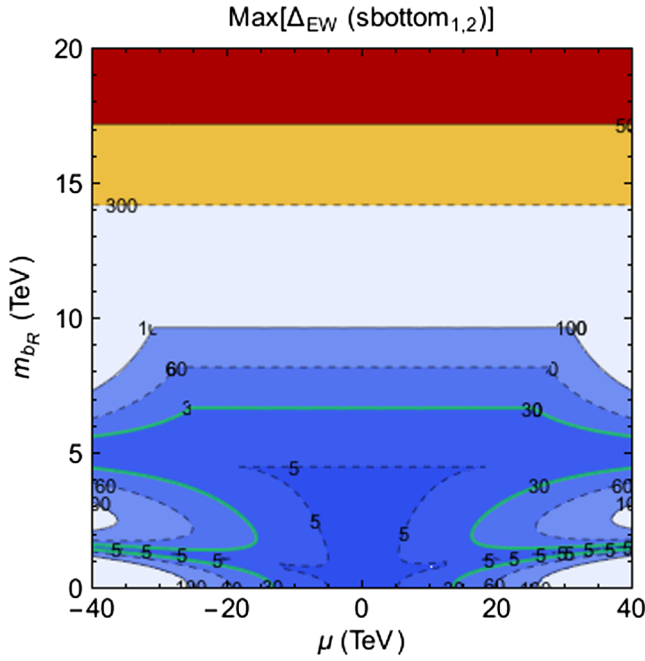


FIG. 13. Contour plot of $\Delta_{EW}(\tilde{b}_1, \tilde{b}_2)$ from $\Sigma_u^u(\tilde{b}_{1,2})$ in the weak scale $m_{\tilde{b}_R}$ vs μ plane. We take $m_{\tilde{b}_L} = 0.72m_{\tilde{b}_R}$ and $\tan\beta = 10$.

3. Limits from $\Sigma_u^u(\tilde{W}_{1,2})$

The chargino contributions to Δ_{EW} are given by

$$\Sigma_u^u(\tilde{W}_{1,2}^\pm) = \frac{-g^2}{16\pi^2} F(m_{\tilde{W}_{1,2}}^2) \left(1 \mp \frac{M_2^2 + \mu^2 - 2m_W^2 \cos 2\beta}{m_{\tilde{W}_2}^2 - m_{\tilde{W}_1}^2} \right). \quad (\text{A4})$$

We plot the \tilde{W}_1 and \tilde{W}_2 contributions to Δ_{EW} in Fig. 14 in the M_2 vs μ plane. The contribution $\Delta_{EW}(\tilde{W}_1)$ is always small for $\mu \lesssim 1$ TeV. In fact, the $\Delta_{EW}(\tilde{W}_1)$ contribution is small all over the plane *except* when $\mu \approx M_2$ in which case the denominator in Eq. (A4) becomes small so that $\Delta_{EW}(\tilde{W}_1)$ blows up. In contrast, from $\Delta_{EW}(\tilde{W}_2)$ we find that $\mu, M_2 \lesssim 5$ TeV. This illustrates that wino masses all by themselves cannot become too large.

4. Limits from $\Sigma_u^u(\tilde{Z}_{1-4})$

The contributions to Δ_{EW} from the neutralino mass squared matrix are found to be [24]

$$\Sigma_u^u(\tilde{Z}_i) = \frac{1}{16\pi^2} \frac{F(m_{\tilde{Z}_i}^2)}{D(\tilde{Z}_i)} \times [K(\tilde{Z}_i) - 2(g^2 + g'^2)\mu^2 M_Z^2 \cos^2\beta (m_{\tilde{Z}_i}^2 - m_{\tilde{\gamma}}^2)], \quad (\text{A5})$$

where

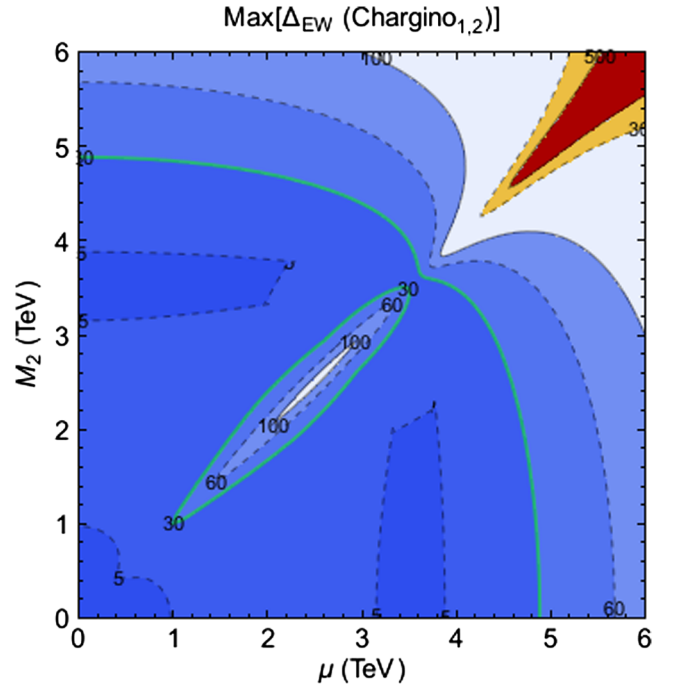


FIG. 14. Contour plot of $\Delta_{EW}(\tilde{W}_1, \tilde{W}_2)$ from $\Sigma_u^u(\tilde{W}_1, \tilde{W}_2)$ in the weak scale M_2 vs μ plane for $\tan\beta = 10$.

$$K(\tilde{Z}_i) = -m_{\tilde{Z}_i}^6 (g^2 + g'^2) + m_{\tilde{Z}_i}^4 [g^2(M_1^2 + \mu^2) + g'^2(M_2^2 + \mu^2) + (g^2 + g'^2)M_Z^2] - m_{\tilde{Z}_i}^2 [\mu^2 (g^2 M_1^2 + g'^2 M_2^2) + (g^2 + g'^2)M_Z^2 m_{\tilde{\gamma}}^2], \quad (\text{A6})$$

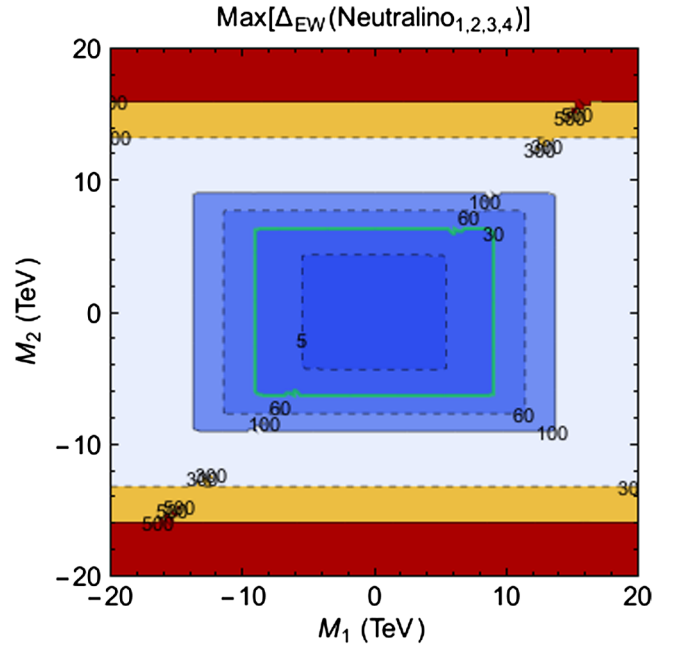


FIG. 15. Contour plots of $\Delta_{EW}(\tilde{Z}_1, \tilde{Z}_2, \tilde{Z}_3, \tilde{Z}_4)$ from $\Sigma_u^u(\tilde{Z}_i)$ in the weak scale M_2 vs M_1 plane for $\mu = 150$ GeV and $\tan\beta = 10$.

$D(\tilde{Z}_i) = \prod_{j \neq i} (m_{\tilde{Z}_i}^2 - m_{\tilde{Z}_j}^2)$ and $m_{\tilde{\gamma}} = M_1 \cos^2 \theta_W + M_2 \sin^2 \theta_W$. The contribution to $\max[\Delta_{\text{EW}}(\tilde{Z}_i)]$ ($i = 1-4$) is shown in Fig. 15 in the M_1 vs M_2 plane for $\mu = 150$ GeV and $\tan \beta = 10$. From the figure we are able to extract that $M_1 \lesssim 10$ TeV while $M_2 \lesssim 6$ TeV. These bounds are independent of any assumptions about gaugino mass unification, unlike those of Sec. VI.

5. Limits from $\Sigma_u^u(h, H, H^\pm)$

For Higgs bosons, it is found that [24]

$$\Sigma_u^u(h, H) = \frac{g_Z^2}{16\pi^2} F(m_{h,H}^2) \times \left(1 \mp \frac{M_Z^2 + m_A^2 (1 + 4 \cos 2\beta + 2 \cos^2 2\beta)}{m_H^2 - m_h^2} \right) \quad (\text{A7})$$

while

$$\Sigma_u^u(H^\pm) = \frac{g^2}{32\pi^2} F(m_{H^\pm}^2). \quad (\text{A8})$$

The contributions from each of h , H and H^\pm are plotted in Fig. 16 as $\max[\Delta_{\text{EW}}(h), \Delta_{\text{EW}}(H), \Delta_{\text{EW}}(H^\pm)]$ in the m_A vs

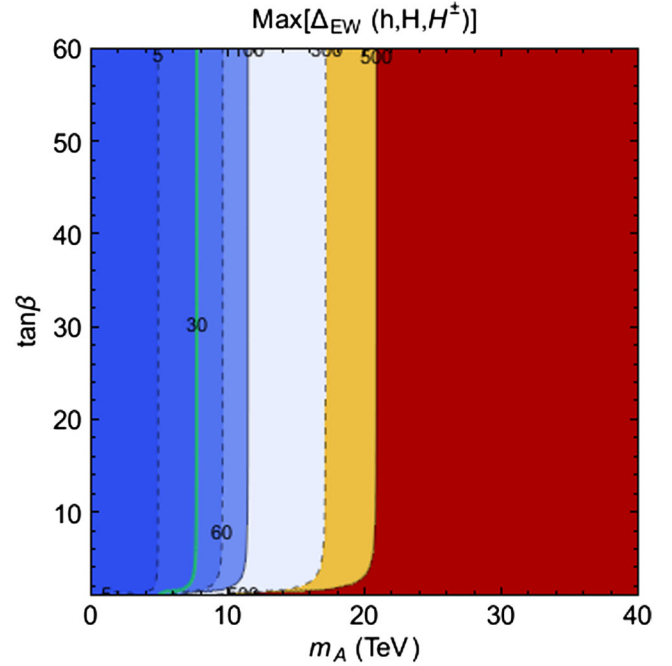


FIG. 16. Contour plot of $\max[\Delta_{\text{EW}}(h, H, H^\pm)]$ from $\Sigma_u^u(h, H, H^\pm)$ in the weak scale $\tan \beta$ vs m_A plane.

$\tan \beta$ plane. The contribution $\Delta_{\text{EW}}(h, H, H^\pm) < 30$ requires $m_A < 8$ TeV. The largest term usually comes from the charged Higgs contribution. These values are somewhat higher than that which comes from the $m_{H_d}^2$ term in Eq. (4).

-
- [1] H. Baer and X. Tata, *Weak Scale Supersymmetry: From Superfields to Scattering Events* (Cambridge University Press, Cambridge, UK, 2006), p. 537.
- [2] E. Witten, Dynamical breaking of supersymmetry, *Nucl. Phys.* **B188**, 513 (1981); R. K. Kaul, Gauge hierarchy in a supersymmetric model, *Phys. Lett.* **109B**, 19 (1982).
- [3] G. Aad *et al.* (ATLAS Collaboration), Observation of a new particle in the search for the standard model Higgs boson with the ATLAS detector at the LHC, *Phys. Lett. B* **716**, 1 (2012).
- [4] S. Chatrchyan *et al.* (CMS Collaboration), Observation of a new boson at a mass of 125 GeV with the CMS experiment at the LHC, *Phys. Lett. B* **716**, 30 (2012).
- [5] U. Amaldi, W. de Boer, and H. Furstenau, Comparison of grand unified theories with electroweak and strong coupling constants measured at LEP, *Phys. Lett. B* **260**, 447 (1991); J. R. Ellis, S. Kelley, and D. V. Nanopoulos, Probing the desert using gauge coupling unification, *Phys. Lett. B* **260**, 131 (1991); P. Langacker and M. x. Luo, Implications of precision electroweak experiments for M_t , ρ_0 , $\sin^2 \theta_W$ and grand unification, *Phys. Rev. D* **44**, 817 (1991).
- [6] L. E. Ibañez and G. G. Ross, $SU(2)_L \times U(1)$ symmetry breaking as a radiative effect of supersymmetry breaking in GUTs, *Phys. Lett.* **110B**, 215 (1982); K. Inoue, A. Kakuto, H. Komatsu, and S. Takeshita, Aspects of grand unified models with softly broken supersymmetry, *Prog. Theor. Phys.* **68**, 927 (1982); Renormalization of supersymmetry breaking parameters revisited, *Prog. Theor. Phys.* **71**, 413 (1984); L. Ibañez, Locally supersymmetric $SU(5)$ grand unification, *Phys. Lett.* **118B**, 73 (1982); H. P. Nilles, M. Srednicki, and D. Wyler, Weak interaction breakdown induced by supergravity, *Phys. Lett.* **120B**, 346 (1983); J. Ellis, J. Hagelin, D. Nanopoulos, and M. Tamvakis, Weak symmetry breaking by radiative corrections in broken supergravity, *Phys. Lett.* **125B**, 275 (1983); L. Alvarez-Gaumé, J. Polchinski, and M. Wise, Minimal low-energy supergravity, *Nucl. Phys.* **B221**, 495 (1983); B. A. Ovrut and S. Raby, The locally supersymmetric geometrical hierarchy model, *Phys. Lett.* **130B**, 277 (1983); for a review, see L. E. Ibanez and G. G. Ross, Supersymmetric Higgs and radiative electroweak breaking, *C.R. Phys.* **8**, 1013 (2007).

- [7] M. S. Carena and H. E. Haber, Higgs boson theory and phenomenology, *Prog. Part. Nucl. Phys.* **50**, 63 (2003).
- [8] G. Aad *et al.* (ATLAS Collaboration), Search for squarks and gluinos using final states with jets and missing transverse momentum with the ATLAS detector in $\sqrt{s} = 7$ TeV proton-proton collisions, *Phys. Lett. B* **710**, 67 (2012).
- [9] S. Chatrchyan *et al.* (CMS Collaboration), Search for Supersymmetry at the LHC in Events with Jets and Missing Transverse Energy, *Phys. Rev. Lett.* **107**, 221804 (2011).
- [10] R. Barbieri and G. Giudice, Upper bounds on supersymmetric particle masses, *Nucl. Phys.* **B306**, 63 (1988).
- [11] G. W. Anderson and D. J. Castano, Naturalness and superpartner masses or when to give up on weak scale supersymmetry, *Phys. Rev. D* **52**, 1693 (1995).
- [12] J. R. Ellis, K. Enqvist, D. V. Nanopoulos, and F. Zwirner, Observables in low-energy superstring models, *Mod. Phys. Lett. A* **01**, 57 (1986).
- [13] B. C. Allanach, K. Cranmer, C. G. Lester, and A. M. Weber, Natural priors, CMSSM fits and LHC weather forecasts, *J. High Energy Phys.* **08** (2007) 023; M. E. Cabrera, J. A. Casas, and R. Ruiz de Austri, Bayesian approach and naturalness in MSSM analyses for the LHC, *J. High Energy Phys.* **03** (2009) 075; M. E. Cabrera, J. A. Casas, and R. Ruiz de Austri, MSSM forecast for the LHC, *J. High Energy Phys.* **05** (2010) 043; S. Fichet, Quantified naturalness from Bayesian statistics, *Phys. Rev. D* **86**, 125029 (2012); D. Kim, P. Athron, C. Balzs, B. Farmer, and E. Hutchison, Bayesian naturalness of the CMSSM and CNMSSM, *Phys. Rev. D* **90**, 055008 (2014); A. Fowlie, CMSSM, naturalness and the, “fine-tuning price”, of the very Large Hadron Collider, *Phys. Rev. D* **90**, 015010 (2014); The little-hierarchy problem is a little problem: Understanding the difference between the big- and little-hierarchy problems with Bayesian probability, [arXiv:1506.03786](https://arxiv.org/abs/1506.03786).
- [14] Joint LEP 2 Supersymmetry Working Group, Combined LEP chargino results up to 208 GeV, http://lepsusy.web.cern.ch/lepsusy/www/inos_moriond01/charginos_pub.html.
- [15] R. Barbieri and A. Strumia, About the fine-tuning price of LEP, *Phys. Lett. B* **433**, 63 (1998).
- [16] J. Lykken and M. Spiropulu, Supersymmetry and the crisis in physics, *Sci. Am.* **310**, No. 5, 34 (2014).
- [17] S. Dimopoulos and L. Susskind, Mass without scalars, *Nucl. Phys.* **B155**, 237 (1979).
- [18] S. Weinberg, in *To Explain the World: The Discovery of Modern Science* (Harper, New York, 2015), p. 416.
- [19] H. Baer, V. Barger, D. Mickelson, and M. Padeffke-Kirkland, SUSY models under siege: LHC constraints and electroweak fine-tuning, *Phys. Rev. D* **89**, 115019 (2014).
- [20] K. L. Chan, U. Chattopadhyay, and P. Nath, Naturalness, weak scale supersymmetry and the prospect for the observation of supersymmetry at the Tevatron and at the CERN LHC, *Phys. Rev. D* **58**, 096004 (1998); S. Akula, M. Liu, P. Nath, and G. Peim, Naturalness, supersymmetry and implications for LHC and dark matter, *Phys. Lett. B* **709**, 192 (2012); M. Liu and P. Nath, Higgs boson mass, proton decay, naturalness, and constraints of the LHC and Planck data, *Phys. Rev. D* **87**, 095012 (2013).
- [21] M. Dine, A. Kagan, and S. Samuel, Naturalness in supersymmetry, or raising the supersymmetry breaking scale, *Phys. Lett. B* **243**, 250 (1990); A. Cohen, D. B. Kaplan, and A. Nelson, The more minimal supersymmetric standard model, *Phys. Lett. B* **388**, 588 (1996); N. Arkani-Hamed and H. Murayama, Can the supersymmetric flavor problem be solved by decoupling? *Phys. Rev. D* **56**, R6733 (1997); T. Moroi and M. Nagai, Probing supersymmetric model with heavy sfermions using leptonic flavor and CP violations, *Phys. Lett. B* **723**, 107 (2013).
- [22] S. Weinberg, Cosmological constraints on the scale of supersymmetry breaking, *Phys. Rev. Lett.* **48**, 1303 (1982); M. Y. Khlopov and A. D. Linde, Is it easy to save the gravitino? *Phys. Lett.* **138B**, 265 (1984); M. Kawasaki, K. Kohri, T. Moroi, and A. Yotsuyanagi, Big-bang nucleosynthesis and gravitino, *Phys. Rev. D* **78**, 065011 (2008).
- [23] H. Baer, V. Barger, P. Huang, A. Mustafayev, and X. Tata, Radiative natural SUSY with a 125 GeV Higgs boson, *Phys. Rev. Lett.* **109**, 161802 (2012).
- [24] H. Baer, V. Barger, P. Huang, D. Mickelson, A. Mustafayev, and X. Tata, Radiative natural supersymmetry: Reconciling electroweak fine-tuning and the Higgs boson mass, *Phys. Rev. D* **87**, 115028 (2013).
- [25] P. J. Fox, A. E. Nelson, and N. Weiner, Dirac gaugino masses and supersoft supersymmetry breaking, *J. High Energy Phys.* **08** (2002) 035; A. E. Nelson and T. S. Roy, New supersoft supersymmetry breaking operators and a solution to the μ problem, *Phys. Rev. Lett.* **114**, 201802 (2015).
- [26] T. Cohen, J. Kearney, and M. Luty, Natural supersymmetry without light Higgsinos, *Phys. Rev. D* **91**, 075004 (2015).
- [27] S. P. Martin, Nonstandard supersymmetry breaking and Dirac gaugino masses without supersoftness, *Phys. Rev. D* **92**, 035004 (2015).
- [28] J. E. Kim and H. P. Nilles, The μ -problem and the strong CP problem, *Phys. Lett.* **138B**, 150 (1984).
- [29] M. Dine, W. Fischler, and M. Srednicki, A simple solution to the strong CP problem with a harmless axion, *Phys. Lett.* **104B**, 199 (1981); A. P. Zhitnitskii, *Sov. J. Appl. Phys.* **31**, 260 (1980).
- [30] E. J. Chun, Dark matter in the Kim-Nilles mechanism, *Phys. Rev. D* **84**, 043509 (2011); K. J. Bae, E. J. Chun, and S. H. Im, Cosmology of the DFSZ axino, *J. Cosmol. Astropart. Phys.* **03** (2012) 013.
- [31] H. Murayama, H. Suzuki, and T. Yanagida, Radiative breaking of Peccei-Quinn symmetry at the intermediate mass scale, *Phys. Lett. B* **291**, 418 (1992);
- [32] K. J. Bae, H. Baer, and H. Serce, Natural little hierarchy for SUSY from radiative breaking of the Peccei-Quinn symmetry, *Phys. Rev. D* **91**, 015003 (2015).
- [33] A. Djouadi, J.-L. Kneur, and G. Moultaka, SuSpect: A Fortran code for the supersymmetric and Higgs particle spectrum in the MSSM, *Comput. Phys. Commun.* **176**, 426 (2007); J. Conley, S. Gainer, J. Hewett, M. Le, and T. Rizzo, Supersymmetry without prejudice at the LHC, *Eur. Phys. J. C* **71**, 1697 (2011); S. S. AbdusSalam, The full 24-parameter MSSM exploration, *AIP Conf. Proc.* **1078**, 297 (2008); S. S. AbdusSalam, B. C. Allanach, F. Quevedo, F. Feroz, and M. Hobson, Fitting the phenomenological MSSM, *Phys. Rev. D* **81**, 095012 (2010); S. Sekmen, S. Kraml, J. Lykken, F. Moortgat, S. Padhi, L. Pape, M. Pierini, H. B. Prosper, and M. Spiropulu, Interpreting LHC SUSY

- searches in the phenomenological MSSM, *J. High Energy Phys.* **02** (2012) 075; M. W. Cahill-Rowley, J. L. Hewett, A. Ismail, and T. G. Rizzo, Higgs sector and fine-tuning in the pMSSM, *Phys. Rev. D* **86**, 075015 (2012); More energy, more searches, but the phenomenological MSSM lives on, *Phys. Rev. D* **88**, 035002 (2013); C. Boehm, P. S. B. Dev, A. Mazumdar, and E. Pukartas, Naturalness of light neutralino dark matter in pMSSM after LHC, XENON100 and Planck Data, *J. High Energy Phys.* **06** (2013) 113; A. Arbey, M. Battaglia, A. Djouadi, and F. Mahmoudi, An update on the constraints on the phenomenological MSSM from the new LHC Higgs results, *Phys. Lett. B* **720**, 153 (2013); M. Chakraborti, U. Chattopadhyay, A. Choudhury, A. Datta, and S. Poddar, The electroweak sector of the pMSSM in the light of LHC–8 TeV and Other Data, *J. High Energy Phys.* **07** (2014) 019.
- [34] A. Mustafayev and X. Tata, Supersymmetry, naturalness, and light Higgsinos, *Indian J. Phys.* **88**, 991 (2014).
- [35] L. E. Ibanez, C. Lopez, and C. Munoz, The low-energy supersymmetric spectrum according to $N = 1$ supergravity guts, *Nucl. Phys.* **B256**, 218 (1985); A. Lleyda and C. Munoz, Nonuniversal soft scalar masses in supersymmetric theories, *Phys. Lett. B* **317**, 82 (1993).
- [36] H. Abe, T. Kobayashi, and Y. Omura, Relaxed fine-tuning in models with nonuniversal gaugino masses, *Phys. Rev. D* **76**, 015002 (2007).
- [37] S. P. Martin, Compressed supersymmetry and natural neutralino dark matter from top-squark-mediated annihilation to top quarks, *Phys. Rev. D* **75**, 115005 (2007).
- [38] J. L. Feng, Naturalness and the status of supersymmetry, *Annu. Rev. Nucl. Part. Sci.* **63**, 351 (2013).
- [39] S. K. Soni and H. A. Weldon, Analysis of the supersymmetry breaking induced by $N = 1$ supergravity theories, *Phys. Lett.* **126B**, 215 (1983).
- [40] V. S. Kaplunovsky and J. Louis, Model independent analysis of soft terms in effective supergravity and in string theory, *Phys. Lett. B* **306**, 269 (1993).
- [41] A. Brignole, L. E. Ibanez, and C. Munoz, Towards a theory of soft terms for the supersymmetric standard model, *Nucl. Phys.* **B422**, 125 (1994); **436**, 747(E) (1995).
- [42] H. Baer, V. Barger, and M. Savoy, Supergravity gauge theories strike back: There is no crisis for SUSY but a new collider may be required for discovery, *Phys. Scr.* **90**, 068003 (2015).
- [43] R. Harnik, G. D. Kribs, D. T. Larson, and H. Murayama, The minimal supersymmetric fat Higgs model, *Phys. Rev. D* **70**, 015002 (2004).
- [44] R. Kitano and Y. Nomura, A solution to the supersymmetric fine-tuning problem within the MSSM, *Phys. Lett. B* **631**, 58 (2005); Supersymmetry, naturalness, and signatures at the CERN LHC, *Phys. Rev. D* **73**, 095004 (2006).
- [45] M. Papucci, J. T. Ruderman, and A. Weiler, Natural SUSY endures, *J. High Energy Phys.* **09** (2012) 035; C. Brust, A. Katz, S. Lawrence, and R. Sundrum, SUSY, the third generation and the LHC, *J. High Energy Phys.* **03** (2012) 103; J. A. Evans, Y. Kats, D. Shih, and M. J. Strassler, Toward full LHC coverage of natural supersymmetry, *J. High Energy Phys.* **07** (2014) 101.
- [46] S. Cassel, D. M. Ghilencea, S. Kraml, A. Lessa, and G. G. Ross, Fine-tuning implications for complementary dark matter and LHC SUSY searches, *J. High Energy Phys.* **05** (2011) 120; G. G. Ross, SUSY: Quo vadis? *Eur. Phys. J. C* **74**, 2699 (2014).
- [47] H. P. Nilles, Dynamically broken supergravity and the hierarchy problem, *Phys. Lett.* **115B**, 193 (1982); A. Chamseddine, R. Arnowitt, and P. Nath, Locally Supersymmetric Grand Unification, *Phys. Rev. Lett.* **49**, 970 (1982); R. Barbieri, S. Ferrara, and C. Savoy, Gauge models with spontaneously broken local supersymmetry, *Phys. Lett.* **119B**, 343 (1982); N. Ohta, Grand unified theories based on local supersymmetry, *Prog. Theor. Phys.* **70**, 542 (1983); L. Hall, J. Lykken, and S. Weinberg, Supergravity as the messenger of supersymmetry breaking, *Phys. Rev. D* **27**, 2359 (1983); for an early review, see e.g. H. P. Nilles, Supersymmetry, supergravity and particle physics, *Phys. Rep.* **110**, 1 (1984); for a recent review, see D. J. H. Chung, L. L. Everett, G. L. Kane, S. F. King, J. D. Lykken, and L. T. Wang, The soft supersymmetry breaking Lagrangian: Theory and applications, *Phys. Rep.* **407**, 1 (2005).
- [48] G. Kane, C. Kolda, L. Roszkowski, and J. Wells, Study of constrained minimal supersymmetry, *Phys. Rev. D* **49**, 6173 (1994).
- [49] H. Baer, V. Barger, P. Huang, D. Mickelson, A. Mustafayev, and X. Tata, Post-LHC7 fine-tuning in the mSUGRA/CMSSM model with a 125 GeV Higgs boson, *Phys. Rev. D* **87**, 035017 (2013).
- [50] H. Baer, V. Barger, and D. Mickelson, How conventional measures overestimate electroweak fine-tuning in supersymmetric theory, *Phys. Rev. D* **88**, 095013 (2013).
- [51] R. D. Peccei, The strong CP problem and axions, *Lect. Notes Phys.* **741**, 3 (2008).
- [52] L. F. Abbott and P. Sikivie, A cosmological bound on the invisible axion, *Phys. Lett.* **120B**, 133 (1983); J. Preskill, M. Wise, and F. Wilczek, Cosmology of the invisible axion, *Phys. Lett.* **120B**, 127 (1983); M. Dine and W. Fischler, The not-so-harmless axion, *Phys. Lett.* **120B**, 137 (1983); M. Turner, Cosmic and local mass density of “invisible” axions, *Phys. Rev. D* **33**, 889 (1986).
- [53] K. J. Bae, H. Baer, and E. J. Chun, Mainly axion cold dark matter from natural supersymmetry, *Phys. Rev. D* **89**, 031701 (2014); Mixed axion/neutralino dark matter in the SUSY DFSZ axion model, *J. Cosmol. Astropart. Phys.* **12** (2013) 028; K. J. Bae, H. Baer, V. Barger, M. R. Savoy, and H. Serce, Supersymmetry with radiatively-driven naturalness: implications for WIMP and axion searches, *Symmetry* **7**, 788 (2015).
- [54] H. Baer, V. Barger, P. Huang, D. Mickelson, M. Padeffke-Kirkland, and X. Tata, Natural SUSY with a bino- or wino-like LSP, *Phys. Rev. D* **91**, 075005 (2015).
- [55] ISAJET 7.84, by H. Baer, F. Paige, S. Protopopescu, and X. Tata, ISAJET 7.69: A Monte Carlo Event Generator for pp , $\bar{p}p$, and e^+e^- Reactions, [arXiv:hep-ph/0312045](https://arxiv.org/abs/hep-ph/0312045).
- [56] H. Baer, C. H. Chen, R. Munroe, F. Paige, and X. Tata, Multichannel search for minimal supergravity at $p\bar{p}$ and e^+e^- colliders, *Phys. Rev. D* **51**, 1046 (1995); H. Baer, J. Ferrandis, S. Kraml, and W. Porod, Treatment of threshold effects in supersymmetric spectrum computations, *Phys. Rev. D* **73**, 015010 (2006).

- [57] D. Matalliotakis and H. P. Nilles, Implications of nonuniversality of soft terms in supersymmetric grand unified theories, *Nucl. Phys.* **B435**, 115 (1995); P. Nath and R. L. Arnowitt, Nonuniversal soft SUSY breaking and dark matter, *Phys. Rev. D* **56**, 2820 (1997); J. Ellis, K. Olive, and Y. Santoso, The MSSM parameter space with non-universal Higgs masses, *Phys. Lett. B* **539**, 107 (2002); J. Ellis, T. Falk, K. Olive, and Y. Santoso, Exploration of the MSSM with non-universal Higgs masses, *Nucl. Phys.* **B652**, 259 (2003); H. Baer, A. Mustafayev, S. Profumo, A. Belyaev, and X. Tata, Direct, indirect and collider detection of neutralino dark matter in SUSY models with non-universal Higgs masses, *J. High Energy Phys.* **07** (2005) 065.
- [58] S. S. AbdusSalam, Stop-mass prediction in naturalness scenarios within MSSM-25, *Int. J. Mod. Phys. A* **29**, 1450160 (2014).
- [59] S. S. AbdusSalam and L. Velasco-Sevilla, Where to look for natural supersymmetry, [arXiv:1506.02499](https://arxiv.org/abs/1506.02499).
- [60] H. Baer, V. Barger, A. Lessa, and X. Tata, Discovery potential for SUSY at a high luminosity upgrade of LHC14, *Phys. Rev. D* **86**, 117701 (2012).
- [61] H. Baer, V. Barger, P. Huang, D. Mickelson, A. Mustafayev, W. Sreethawong, and X. Tata, Radiatively driven natural supersymmetry at the LHC, *J. High Energy Phys.* **12** (2013) 013.
- [62] B. Altunkaynak, H. Baer, V. Barger, and P. Huang, Distinguishing LSP archetypes via gluino pair production at LHC13, *Phys. Rev. D* **92**, 035015 (2015).
- [63] H. Baer, V. Barger, and P. Huang, Hidden SUSY at the LHC: The light Higgsino-world scenario and the role of a lepton collider, *J. High Energy Phys.* **11** (2011) 031.
- [64] Z. Han, G. D. Kribs, A. Martin, and A. Menon, Hunting quasidegenerate Higgsinos, *Phys. Rev. D* **89**, 075007 (2014).
- [65] H. Baer, A. Mustafayev, and X. Tata, Monojet plus soft dilepton signal from light Higgsino pair production at LHC14, *Phys. Rev. D* **90**, 115007 (2014).
- [66] C. Han, D. Kim, S. Munir, and M. Park, Accessing the core of naturalness, nearly degenerate Higgsinos, at the LHC, *J. High Energy Phys.* **04** (2015) 132.
- [67] H. Baer, V. Barger, D. Mickelson, A. Mustafayev, and X. Tata, Physics at a Higgsino Factory, *J. High Energy Phys.* **06** (2014) 172.
- [68] H. Baer, V. Barger, P. Huang, D. Mickelson, A. Mustafayev, W. Sreethawong, and X. Tata, Same sign diboson signature from supersymmetry models with light Higgsinos at the LHC, *Phys. Rev. Lett.* **110**, 151801 (2013).
- [69] H. Baer, V. Barger, M. Padeffke-Kirkland, and X. Tata, Naturalness implies intragenerational degeneracy for decoupled squarks and sleptons, *Phys. Rev. D* **89**, 037701 (2014).
- [70] H. Baer, C. Balazs, P. Mercadante, X. Tata, and Y. Wang, Viable supersymmetric models with an inverted scalar mass hierarchy at the GUT scale, *Phys. Rev. D* **63**, 015011 (2000).
- [71] A. Dedes and P. Slavich, Two loop corrections to radiative electroweak symmetry breaking in the MSSM, *Nucl. Phys.* **B657**, 333 (2003).
- [72] H. Baer, V. Barger, and M. Padeffke-Kirkland, Electroweak versus high scale fine-tuning in the 19-parameter SUGRA model, *Phys. Rev. D* **88**, 055026 (2013).
- [73] N. Arkani-Hamed, T. Han, M. Mangano, and L. T. Wang, Physics opportunities of a 100 TeV proton-proton collider, [arXiv:1511.06495](https://arxiv.org/abs/1511.06495).
- [74] H. Baer, V. Barger, and A. Mustafayev, Implications of a 125 GeV Higgs scalar for LHC SUSY and neutralino dark matter searches, *Phys. Rev. D* **85**, 075010 (2012).