

Double Higgs peak in the minimal SUSY $B - L$ modelW. Abdallah,^{1,2} S. Khalil,^{1,3} and S. Moretti⁴¹*Center for Fundamental Physics, Zewail City of Science and Technology, 6 October City, Giza 12588, Egypt*²*Department of Mathematics, Faculty of Science, Cairo University, Giza 12613, Egypt*³*Department of Mathematics, Faculty of Science, Ain Shams University, Cairo 11566, Egypt*⁴*School of Physics and Astronomy, University of Southampton, Highfield, Southampton SO17 1BJ, United Kingdom*

(Received 17 October 2014; published 6 January 2015)

Motivated by a $\sim 3\sigma$ excess recorded by the CMS experiment at the LHC around a mass of order ~ 137 GeV in $ZZ \rightarrow 4l$ and $\gamma\gamma$ samples, we analyze the discovery potential of a second neutral Higgs boson in the Supersymmetric $B - L$ extension of the Standard Model at the CERN machine. We confirm that a double Higgs peak structure can be generated in this framework, with CP -even Higgs boson masses at ~ 125 GeV and ~ 137 GeV, unlike the case of the Minimal Supersymmetric Standard Model.

DOI: [10.1103/PhysRevD.91.014001](https://doi.org/10.1103/PhysRevD.91.014001)

PACS numbers: 13.85.Rm, 12.60.Jv

I. INTRODUCTION

The Higgs boson discovery at the Large Hadron Collider (LHC) in July 2012 has been the beginning of a new era in particle physics. In fact, we now know for certain the mechanism chosen by nature to generate mass. The actual signals attributed to such a new state, h , emerged in a variety of decay modes, $\gamma\gamma$, ZZ , W^+W^- as well as $b\bar{b}$ and $\tau^+\tau^-$ (in order of decreasing experimental accuracy), all pointing to a Higgs boson mass, m_h , of 125 GeV. Furthermore, the interaction properties of this new state are rather consistent with those predicted by the Standard Model (SM) and so are its quantum numbers.

Intriguingly though, in the search for such a new state, the CMS Collaboration also found potential signals for another Higgs boson, h' , with mass $m_{h'} \geq 136.5$ GeV in the $h' \rightarrow ZZ \rightarrow 4l$ decay mode (where $4l$ refers to any possible combination of e^+e^- and $\mu^+\mu^-$ pairs) [1], wherein a $\sim 2\sigma$ excess is appreciable in the vicinities of 145 GeV (specifically, see Figs. 18 and 19 in Ref. [1]), and in the $h' \rightarrow \gamma\gamma$ decay channel, wherein the local p -value indicates a possibly significant excess very near 137 GeV at the $\sim 2.9\sigma$ level [see Fig. 6(a) of the first paper in [2] and Fig. 2 of the second paper in [2]]. Recall that these are the two Higgs decays most accurately known by experiment. We also note, as mentioned in Ref. [3], that various anomalies at ~ 137 GeV or above have emerged in several other channels, from both ATLAS and CMS at the LHC as well as CDF and D0 at the Tevatron, see also Ref. [4].

An explanation for a second Higgs particle cannot of course be found in the SM. Contrast this with the fact that, in any model of Supersymmetry (SUSY), wherein the SM-like Higgs boson is naturally limited to be at the electro-weak (EW) scale (say below $2M_Z$), and where one also finds additional (neutral and CP -even) Higgs bosons [5]. Thus, there is enough to be tempted to conclude that a SUSY scenario may be behind the aforementioned data. As we shall show, this cannot be its minimal realization

though, the so-called Minimal Supersymmetric Standard Model (MSSM). Hence, an explanation for the possibility of a double Higgs peak ought to be found within non-minimal realizations of SUSY.

Amongst the latter, one really ought to single out those that also offer explanations to other data pointing to physics Beyond the SM (BSM), most notably those indicating that neutrinos oscillate, hence that they have mass. One is therefore well motivated in looking at the $B - L$ Supersymmetric Standard Model (BLSSM). The BLSSM is an extension of the MSSM obtained by adopting a $U(1)_{B-L}$ extended gauge group, i.e., $SU(3)_C \times SU(2)_L \times U(1)_Y \times U(1)_{B-L}$. The particle content of this SUSY $B - L$ model therefore includes the following superfields in addition to those of the MSSM: three SM-singlet chiral superfields, one per generation, $\{\hat{N}_i^c\}_{i=1}^3$ (to be identified with the right-handed neutrinos and their SUSY counterparts), the \hat{Z}' vector superfield necessary to gauge the $U(1)_{B-L}$ symmetry (eventually yielding a physical Z' state and its SUSY partner) plus two SM-singlet chiral Higgs superfields $\hat{\chi}_{1,2}$ (finally giving three additional physical Higgs fields and their related SUSY states). In this framework, the scale of $B - L$ symmetry breaking is related to the soft SUSY breaking scale [6]. Thus, the right-handed neutrino masses are naturally of order TeV and the Dirac neutrino masses must be less than 10^{-4} GeV (i.e., they are of order the electron mass) [7–10], as data appear to demand. Furthermore, a similar BLSSM setup, based on an inverse seesaw mechanism, relieves the so-called small hierarchy problem of the MSSM, wherein the discovered Higgs boson mass of 125 GeV is dangerously close to its predicted absolute upper limit (130 GeV or so), by providing (s) neutrino mass corrections which can uplift this value to 170 GeV or so [11,12] (see also [13]). Finally, the BLSSM could also contribute, with respect to the MSSM, additional loop corrections to the $h \rightarrow \gamma\gamma$ rate [14], should this channel be confirmed to be enhanced by future CERN data.

Notwithstanding this, of particular relevance here is the fact that, in the BLSSM, similarly to the MSSM, the introduction of yet another Higgs state, a singlet $\hat{\chi}_2$ in this case, is necessary in order to cancel the $U(1)_{B-L}$ anomalies produced by the fermionic members of the first Higgs superfield, $\hat{\chi}_1$. It will be the mixing of this Higgs singlet with the two Higgs doublets which will relieve the deadlock typical of the MSSM, where a light SM-like Higgs state (at 125 GeV) requires the other Higgs states to be much heavier in comparison, including the CP -even state, thereby ultimately being responsible for enabling BLSSM spectra wherein one can find alongside the above SM-like Higgs state another rather light physical Higgs boson, h' , also CP -even, which can be identified with the object possibly responsible for a second resonance at ~ 137 GeV.

In this work, we will set out to prove that this can indeed be the case. The plan of our paper is as follows. In the next section, we describe the Higgs sector of the BLSSM in the presence of a SM-like Higgs state h with a mass of ~ 125 GeV. In the two following ones, we concentrate in turn on a possible ~ 137 GeV Higgs signal in $h' \rightarrow ZZ \rightarrow 4l$ and $h' \rightarrow \gamma\gamma$. We conclude in Sec. 4.

II. LIGHT HIGGS BOSONS IN THE BLSSM

The superpotential of the BLSSM is given by

$$\begin{aligned} \hat{W} = & Y_u \hat{Q} \hat{H}_2 \hat{U}^c + Y_d \hat{Q} \hat{H}_1 \hat{D}^c + Y_e \hat{L} \hat{H}_1 \hat{E}^c + \mu \hat{H}_1 \hat{H}_2 \\ & + Y_\nu \hat{L} \hat{H}_2 \hat{N}^c + Y_N \hat{N}^c \hat{\chi}_1 \hat{N}^c + \mu' \hat{\chi}_1 \hat{\chi}_2, \end{aligned} \quad (1)$$

and, by assuming universality conditions at the grand unification theory scale, we get the SUSY $B-L$ soft breaking Lagrangian

$$\begin{aligned} -\mathcal{L}_{\text{soft}}^{\text{BLSSM}} = & -\mathcal{L}_{\text{soft}}^{\text{MSSM}} + Y_\nu^A \tilde{L} H_2 \tilde{N}^c + Y_N^A \tilde{N}^c \tilde{\chi}_1 \tilde{N}^c \\ & + m_0^2 [|\tilde{E}|^2 + |\tilde{N}|^2 + |\tilde{\chi}_1|^2 + |\tilde{\chi}_2|^2] \\ & + [B_\mu \tilde{\chi}_1 \tilde{\chi}_2 + \frac{1}{2} M_{1/2} \tilde{Z}' \tilde{Z}' + \text{H.c.}], \end{aligned} \quad (2)$$

where $(Y_f^A)_{ij} = (Y_f A_0)_{ij}$ and the tilde denotes the scalar components of the chiral superfields as well as the fermionic components of the vector superfields. We use the same notation for Higgs superfields and their scalar field components. The $U(1)_Y$ and $U(1)_{B-L}$ gauge kinetic mixing can be absorbed in the covariant derivative redefinition. In this basis, one finds

$$M_Z^2 \simeq \frac{1}{4} (g_1^2 + g_2^2) v^2, \quad M_{Z'}^2 \simeq g_{BL}^2 v^2 + \frac{1}{4} \tilde{g}^2 v^2, \quad (3)$$

where \tilde{g} is the gauge coupling mixing between $U(1)_Y$ and $U(1)_{B-L}$. Furthermore, the mixing angle between Z and Z' is given by

$$\tan 2\theta' \simeq \frac{2\tilde{g} \sqrt{g_1^2 + g_2^2}}{\tilde{g}^2 + 16(\frac{v'}{v})^2 g_{BL}^2 - g_2^2 - g_1^2}, \quad (4)$$

where $v = \sqrt{v_1^2 + v_2^2} \simeq 246$ GeV and $v' = \sqrt{v_1'^2 + v_2'^2}$ with the VEVs of the Higgs fields given by

$$\langle \text{Re} H_i^0 \rangle = \frac{v_i}{\sqrt{2}}, \quad \langle \text{Re} \chi_i^0 \rangle = \frac{v_i'}{\sqrt{2}}. \quad (5)$$

The gauge kinetic term induces mixing at tree level between the $H_{1,2}^0$ and $\chi_{1,2}^0$ states in the BLSSM scalar potential. Therefore, the minimization conditions of this potential at tree level lead to the following relations [15]:

$$\begin{aligned} B_\mu = & -\frac{1}{8} [-2\tilde{g} g_{BL} v'^2 \cos 2\beta' + 4m_{H_1}^2 - 4m_{H_2}^2 \\ & + (g_1^2 + \tilde{g}^2 + g_2^2) v^2 \cos 2\beta] \tan 2\beta, \end{aligned} \quad (6)$$

$$\begin{aligned} B_{\mu'} = & \frac{1}{4} [-2g_{BL}^2 v'^2 \cos 2\beta' + 2m_{\chi_1}^2 - 2m_{\chi_2}^2 \\ & + \tilde{g} g_{BL} v^2 \cos 2\beta] \tan 2\beta', \end{aligned} \quad (7)$$

where $\tan \beta = \frac{v_2}{v_1}$ and $\tan \beta' = \frac{v_2'}{v_1'}$. Note that, with non-vanishing \tilde{g} , the B_μ parameter depends on v' and the sign of $\cos 2\beta'$. We may have constructive/destructive interference between the first term and other terms in Eq. (6). In general, we find that the typical value of B_μ is of order TeV.

To obtain the masses of the physical neutral Higgs bosons, one makes the usual redefinition of the Higgs fields, i.e., $H_{1,2}^0 = \frac{1}{\sqrt{2}}(v_{1,2} + \sigma_{1,2} + i\phi_{1,2})$ and $\chi_{1,2}^0 = \frac{1}{\sqrt{2}}(v'_{1,2} + \sigma'_{1,2} + i\phi'_{1,2})$, where $\sigma_{1,2} = \text{Re} H_{1,2}^0$, $\phi_{1,2} = \text{Im} H_{1,2}^0$, $\sigma'_{1,2} = \text{Re} \chi_{1,2}^0$ and $\phi'_{1,2} = \text{Im} \chi_{1,2}^0$. The real parts correspond to the CP -even Higgs bosons and the imaginary parts correspond to the CP -odd Higgs bosons. The squared-mass matrix of the BLSSM CP -odd neutral Higgs fields at tree level, in the basis $(\phi_1, \phi_2, \phi'_1, \phi'_2)$, is given by

$$m_{A,A'}^2 = \begin{pmatrix} B_\mu \tan \beta & B_\mu & 0 & 0 \\ B_\mu & B_\mu \cot \beta & 0 & 0 \\ 0 & 0 & B_{\mu'} \tan \beta' & B_{\mu'} \\ 0 & 0 & B_{\mu'} & B_{\mu'} \cot \beta' \end{pmatrix}. \quad (8)$$

It is clear that the MSSM-like CP -odd Higgs A is decoupled from the BLSSM-like one A' (at tree level). However, due to the dependence of B_μ on v' , one may find $m_A^2 = \frac{2B_\mu}{\sin 2\beta} \sim m_{A'}^2 = \frac{2B_{\mu'}}{\sin 2\beta'} \sim \mathcal{O}(1 \text{ TeV})$.

The squared-mass matrix of the BLSSM CP -even neutral Higgs fields at tree level, in the basis $(\sigma_1, \sigma_2, \sigma'_1, \sigma'_2)$, is given by

$$M^2 = \begin{pmatrix} M_{hH}^2 & M_{hh'}^2 \\ M_{hh'}^{2*} & M_{h'H'}^2 \end{pmatrix}, \quad (9)$$

where M_{hH}^2 is the usual MSSM neutral CP -even Higgs mass matrix, which leads to the SM-like Higgs boson with mass, at one loop level, of order 125 GeV and a heavy Higgs boson with mass $m_H \sim m_A \sim \mathcal{O}(1 \text{ TeV})$. In this case, the BLSSM matrix $M_{h'H'}^2$ is given by

$$M_{h'H'}^2 = \begin{pmatrix} m_{A'}^2 c_{\beta'}^2 + g_{BL}^2 v_1'^2 & -\frac{1}{2} m_{A'}^2 s_{2\beta'} - g_{BL}^2 v_1' v_2' \\ -\frac{1}{2} m_{A'}^2 s_{2\beta'} - g_{BL}^2 v_1' v_2' & m_{A'}^2 s_{\beta'}^2 + g_{BL}^2 v_2'^2 \end{pmatrix},$$

where $c_x = \cos(x)$ and $s_x = \sin(x)$. Therefore, the eigenvalues of this mass matrix are given by

$$m_{h',H'}^2 = \frac{1}{2} [(m_{A'}^2 + M_{Z'}^2) \mp \sqrt{(m_{A'}^2 + M_{Z'}^2)^2 - 4m_{A'}^2 M_{Z'}^2 \cos^2 2\beta'}].$$

If $\cos^2 2\beta' \ll 1$, one finds that the lightest $B - L$ neutral Higgs is given by

$$m_{h'} \simeq \left(\frac{m_{A'}^2 M_{Z'}^2 \cos^2 2\beta'}{m_{A'}^2 + M_{Z'}^2} \right)^{\frac{1}{2}} \simeq \mathcal{O}(100 \text{ GeV}). \quad (10)$$

The mixing matrix $M_{hh'}$ is proportional to \tilde{g} and can be written as [15]

$$M_{hh'}^2 = \frac{1}{2} \tilde{g} g_{BL} \begin{pmatrix} v_1 v_1' & -v_1 v_2' \\ -v_2 v_1' & v_2 v_2' \end{pmatrix}. \quad (11)$$

For a gauge coupling $g_{BL} \sim |\tilde{g}| \sim \mathcal{O}(0.5)$, these off-diagonal terms are about 1 order of magnitude smaller than the diagonal ones. However, they are still crucial for generating interaction vertices between the genuine BLSSM Higgs bosons and the MSSM-like Higgs states. Note that the mixing gauge coupling constant, \tilde{g} , is a free parameter that can be positive or negative [15].

In Fig. 1, we show the masses of the four CP -even Higgs bosons in the BLSSM for $g_{BL} = 0.4$ and $\tilde{g} = -0.4$. In this plot we fix the lightest MSSM Higgs boson mass to be of order 125 GeV. As can be seen from this figure, as intimated, one of the BLSSM Higgs bosons, h' , can be the second lightest Higgs boson (~ 137 GeV). Both H and H' are quite heavy (since both m_A and $m_{A'}$ are of order TeV).

Two remarks are in order: firstly, if $\tilde{g} = 0$, the coupling of the BLSSM lightest Higgs state, h' , with the SM particles will be significantly suppressed ($\leq 10^{-5}$ relative to the SM strength), hence it cannot account for the considered signals; secondly, in both cases of vanishing

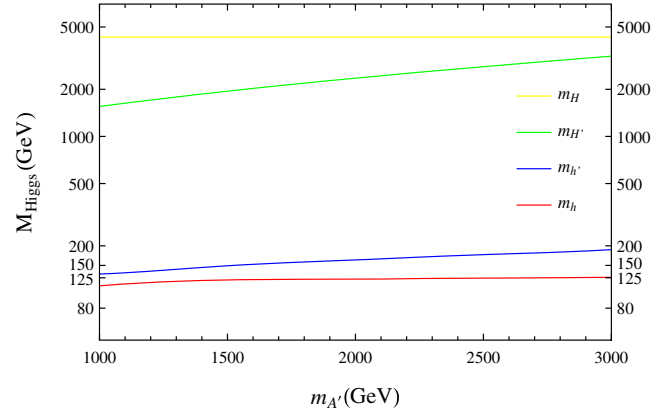


FIG. 1 (color online). The BLSSM CP -even Higgs masses versus $m_{A'}$ for $g_{BL} = 0.4$ and $\tilde{g} = -0.4$.

and nonvanishing \tilde{g} , one may fine-tune the parameters and get a light $m_{A'}$, which leads to a MSSM-like CP -even Higgs state, H , with $m_H \sim 137$ GeV. However, it is well known that in the MSSM the coupling HZZ is suppressed with respect to the corresponding one of the SM-like Higgs particle by 1 order of magnitude due to the smallness of $\cos(\beta - \alpha)$, where $\sin(\beta - \alpha) \sim 1$. In addition, the total decay width of H is larger than the total decay width of the SM-like Higgs, h , by at least 1 order of magnitude because it is proportional to $(\cos \alpha / \cos \beta)^2$, which is essentially the square of the coupling of H to the bottom quark. Therefore, the MSSM-like heavy Higgs signal ($pp \rightarrow H \rightarrow ZZ \rightarrow 4l$) has a very suppressed cross section and then it is difficult to probe it at the LHC and it cannot be a candidate for the signals under consideration.

In the light of this, we will focus in the next section on the lightest BLSSM CP -even Higgs, h' , as a possible candidate for the second Higgs peak seen by CMS in Ref. [2]. However, before doing so, we ought to setup appropriately the BLSSM parameter space, in order to find such a solution. As mentioned in the Introduction, the recent results from CMS indicate a $\sim 2.9\sigma$ hint of a second Higgs boson at 137 GeV or above. Herein, for definiteness, we consider $m_{h'} = 136.5$ GeV as reference BLSSM point.

As emphasized above, in the BLSSM, it is quite natural to have two light CP -even Higgs bosons h and h' with mass 125 GeV and ~ 137 GeV, respectively. The CP -even neutral Higgs mass matrix in Eq. (9) can be diagonalized by a unitary transformation:

$$\Gamma M^2 \Gamma^\dagger = \text{diag}\{m_h^2, m_{h'}^2, m_H^2, m_{H'}^2\}. \quad (12)$$

The mixing couplings Γ_{32} and Γ_{31} are proportional to \tilde{g} and they identically vanish if $\tilde{g} = 0$, as one can see in Fig. 2. Also, in this limit, Γ_{11} and Γ_{12} approach $\sin \alpha$ and $\cos \alpha$, respectively, where α is the usual CP -even Higgs mixing angle in the MSSM.

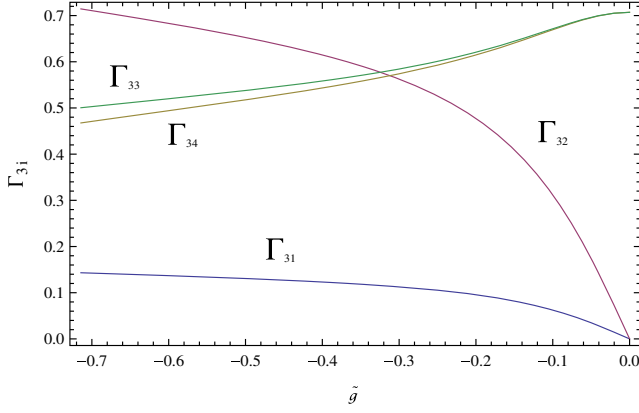


FIG. 2 (color online). The mixing of h' , Γ_{3i} , versus the gauge kinetic mixing, \tilde{g} .

The lightest eigenstate h is the SM-like Higgs boson, for which we will fix its mass to be exactly 125 GeV. As mentioned, the numerical scans confirm that the h' state can then be the second light Higgs boson with mass of $\mathcal{O}(137 \text{ GeV})$. The other two CP -even states, H, H' , are heavy [of $\mathcal{O}(1) \text{ TeV}$]. The h' can be written in terms of gauge eigenstates as

$$h' = \Gamma_{31}\sigma_1 + \Gamma_{32}\sigma_2 + \Gamma_{33}\sigma'_1 + \Gamma_{34}\sigma'_2. \quad (13)$$

Thus, the couplings of the h' with up and down quarks are given by

$$h' u \bar{u}: -i \frac{m_u}{v} \frac{\Gamma_{32}}{\sin \beta}, \quad h' d \bar{d}: -i \frac{m_d}{v} \frac{\Gamma_{31}}{\cos \beta}. \quad (14)$$

Similarly, one can derive the h' couplings with the W^+W^- and ZZ gauge bosons:

$$\begin{aligned} h'W^+W^-: & ig_2 M_W (\Gamma_{32} \sin \beta + \Gamma_{31} \cos \beta), \\ h'ZZ: & \frac{i}{2} [4g_{BL} \sin^2 \theta' (v'_1 \Gamma_{32} + v'_2 \Gamma_{31}) \\ & + (v_2 \Gamma_{32} + v_1 \Gamma_{31}) (g_z \cos \theta' - \tilde{g} \sin \theta')^2]. \end{aligned}$$

Since $\sin \theta' \ll 1$, the coupling of the h' with ZZ , $g_{h'ZZ}$, will be as follows:

$$g_{h'ZZ} \simeq ig_z M_Z (\Gamma_{32} \sin \beta + \Gamma_{31} \cos \beta), \quad (15)$$

where $g_z = \sqrt{g_1^2 + g_2^2}$. In our analysis we have used SARAH [16] and SPheno [17,18] to build the BLSSM. Furthermore, the matrix-element calculation and event generation were derived from MadGraph 5 [19] and manipulated with MadAnalysis 5 [20]. Finally, notice that all current experimental constraints, from both collider (LEP2, Tevatron and LHC) and flavor (LHCb, BaBar and Belle) are taken into account in our numerical scans.

TABLE I. BLSSM benchmark point in terms of inputs (to SARAH and SPheno) and outputs (used in our analysis). [Dimensions of masses (squared) are GeV (GeV²).]

Inputs					
g_{BL}	\tilde{g}	$\tan \beta$	$\tan \beta'$	$M_{Z'}$	$m_{H_1}^2$
0.55	-0.12	5	1.15	1700	1.1×10^6
$m_{H_2}^2$	$m_{\chi_1}^2$	$m_{\chi_2}^2$	Y_ν^{diag}	Y_N^{diag}	$\text{sign}(\mu, \mu')$
-1×10^7	-2.8×10^4	7.8×10^5	10^{-4}	0.43	1
$(m_{\tilde{q}}^2)^{\text{diag}}$	$(m_{\tilde{e}}^2)^{\text{diag}}$	$(m_{\tilde{d}}^2)^{\text{diag}}$	$(m_{\tilde{u}}^2)^{\text{diag}}$	$(m_{\tilde{\nu}}^2)^{\text{diag}}$	$(m_{\tilde{\nu}'}^2)^{\text{diag}}$
3.9×10^7	3.1×10^5	4×10^7	4×10^7	1.8×10^5	7.9×10^5
Outputs					
m_h	$m_{h'}$	m_H	$m_{H'}$	m_A	$m_{A'}$
125	136.5	3.1×10^3	2.3×10^3	3.1×10^3	1.6×10^3

In what follows, we will consider the BLSSM benchmark point for soft SUSY breaking parameters given in Table I.

III. SEARCH FOR A $\sim 137 \text{ GeV}$ HIGGS BOSON IN $h' \rightarrow ZZ \rightarrow 4l$

The Higgs decay into $ZZ \rightarrow 4l$ is one of the golden channels, with low background, to search for Higgs boson (s). The search is performed by looking for resonant peaks in the m_{4l} spectrum, i.e., the invariant mass of the $4l$ system. In CMS [1], this decay channel shows two significant peaks at 125 GeV and above 137 GeV. We define by $\sigma(pp \rightarrow h')$ the total h' production cross section, dominated by gluon-gluon fusion, and by $\text{BR}(h' \rightarrow ZZ)$ the h' branching ratio (BR) in the ZZ channel. From the previous section, it is then clear that

$$\frac{\sigma(pp \rightarrow h')}{\sigma(pp \rightarrow h)^{\text{SM}}} \simeq \left(\frac{\Gamma_{32}}{\sin \beta} \right)^2, \quad (16)$$

(wherein the label SM identifies the SM Higgs rates computed for a 125 GeV mass), which, for $m_{h'} \simeq 137 \text{ GeV}$, is of order $\mathcal{O}(0.1)$. Also the ratio between BRs can be estimated as

$$\begin{aligned} & \frac{\text{BR}(h' \rightarrow ZZ)}{\text{BR}(h \rightarrow ZZ)^{\text{SM}}} \\ & \simeq \left(1 + \frac{\Gamma_{h \rightarrow WW}^{\text{SM}}}{\Gamma_{h \rightarrow bb}^{\text{SM}}} \right) \frac{F(M_Z/m_{h'})}{F(M_Z/m_h)^{\text{SM}}} \\ & \times \left[\left(\frac{\Gamma_{31} \sec \beta}{\Gamma_{32} \sin \beta + \Gamma_{31} \cos \beta} \right)^2 + 2F \left(\frac{M_W}{m_{h'}} \right) \right]^{-1}, \end{aligned}$$

where

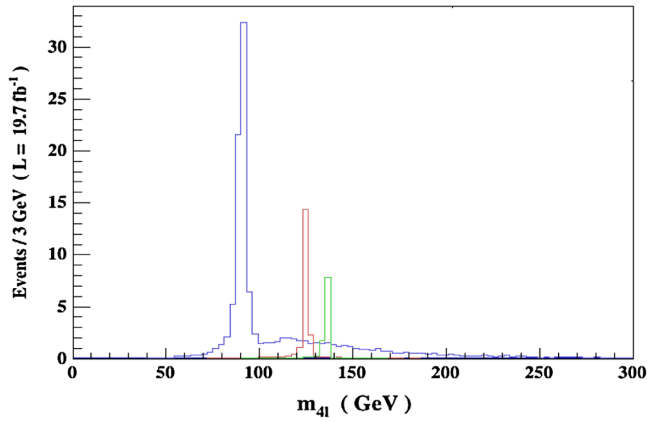


FIG. 3 (color online). The number of events of the processes $pp \rightarrow Z \rightarrow 2l\gamma^* \rightarrow 4l$ (blue/left peak), $pp \rightarrow h \rightarrow ZZ \rightarrow 4l$ (red/centre peak) and $pp \rightarrow h' \rightarrow ZZ \rightarrow 4l$ (green/right peak) versus the invariant mass of the outgoing particles (4-leptons), m_{4l} .

$$F(x) = \frac{3(1 - 8x^2 + 20x^4)}{(4x^2 - 1)^{1/2}} \arccos\left(\frac{3x^2 - 1}{2x^3}\right) - \frac{1 - x^2}{2x^2} (2 - 13x^2 + 47x^4) - \frac{3}{2} (1 - 6x^2 + 4x^4) \log x^2.$$

Now we analyze the kinematic search for the BLSSM Higgs boson, h' , in the decay channel to $ZZ \rightarrow 4l$. In Fig. 3, we show the invariant mass of the 4-lepton final state from $pp \rightarrow h' \rightarrow ZZ \rightarrow 4l$ at $\sqrt{s} = 8$ TeV, after applying a p_T cut of 5 GeV on the four leptons. The SM model backgrounds from the Z and 125 GeV Higgs boson decays, $pp \rightarrow Z \rightarrow 2l\gamma^* \rightarrow 4l$ and $pp \rightarrow h \rightarrow ZZ \rightarrow 4l$, respectively, are taken into account, as demonstrated by the first two peaks in the plot (with the same p_T requirement). It is clear that the third peak at $m_{4l} \sim 137$ GeV, produced by the decay of the BLSSM Higgs boson h' into $ZZ \rightarrow 4l$, can reasonably well account for the events observed by CMS [1] with the 8 TeV data. This is shown in Table II, where the mass interval in m_{4l} that we have investigated to extract the

TABLE II. The observed (by CMS) and expected (from the BLSSM) number of events in a mass window around $m_h = 125$ GeV ($121 \text{ GeV} < m_{4l} < 131 \text{ GeV}$) and $m_{h'} = 136.5$ GeV ($131 \text{ GeV} < m_{4l} < 152 \text{ GeV}$) in the $ZZ \rightarrow 4l$ channel compared to the expected (dominant) $pp \rightarrow Z \rightarrow 2l\gamma^* \rightarrow 4l$ and $pp \rightarrow h \rightarrow ZZ \rightarrow 4l$ backgrounds.

Higgs mass	Number of events for 19.7 fb^{-1} at $\sqrt{s} = 8$ TeV			
	Observed (CMS)	Expected (BLSSM)	Background	
			$Z \rightarrow 2l\gamma^*$	$h \rightarrow ZZ$
125 GeV	25	18.5	6.6	...
136.5 GeV	29	10.2	9.15	0.8

h' signal is wide enough to capture the prominent 145 GeV anomaly seen in CMS.

IV. SEARCH FOR A ~ 137 GeV HIGGS BOSON IN $h' \rightarrow \gamma\gamma$

Now we turn to the diphoton channel, which provides the greatest sensitivity for Higgs boson discovery in the intermediate mass range (i.e., for Higgs masses below $2M_W$). Like the SM-like Higgs, the h' decays into two photons through a triangle-loop diagram dominated by (primarily) W and (in part) top quark exchanges. As shown in a previous section, the couplings of the h' with top quarks and W gauge bosons are proportional to some combinations of Γ_{31} and Γ_{32} , which may then lead to some suppression in the partial width $\Gamma(h' \rightarrow \gamma\gamma)$. In the SM, $\text{BR}(h \rightarrow \gamma\gamma) \approx 2 \times 10^{-3}$. Similarly, in the BLSSM, we found that, for $m_{h'} = 136.5$ GeV, the BR of h' in photons amounts to 2.15×10^{-3} . The distribution of the diphoton invariant mass is presented in Fig. 4 for a center-of-mass energy $\sqrt{s} = 8$ TeV. Again, here, the observed $h \rightarrow \gamma\gamma$ SM-like signal around 125 GeV is taken as background while the $Z \rightarrow \gamma\gamma$ background can now be ignored [21]. As expected, the sensitivity to the h' Higgs boson is severely reduced with respect to the presence of the already observed Higgs boson, yet a peak is clearly seen at 136.5 GeV and is very compatible with the excess seen by CMS [2]. This is shown in Table III. It is worth mentioning that here we consider both the gluon-gluon fusion and the vector-boson fusion modes for both h and h' production. Before closing, we should also mention that the $h' \rightarrow \gamma\gamma$ enhancement found in the BLSSM may be mirrored in the γZ decay channel for which, at present, there exists some constraints, albeit not as severe as in the $\gamma\gamma$ case. We can anticipate [22] that the BLSSM regions of parameter space studied here are consistent with all available data [23].

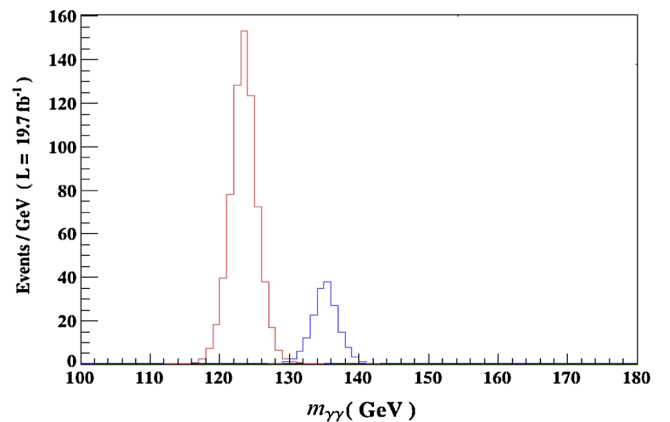


FIG. 4 (color online). The number of events of the processes $pp \rightarrow h \rightarrow \gamma\gamma$ (red/left peak), $pp \rightarrow h' \rightarrow \gamma\gamma$ (blue/right peak) versus the invariant mass of the outgoing particles (diphotons), $m_{\gamma\gamma}$.

TABLE III. The observed (by CMS) and expected (from the BLSSM) number of events (after subtracting background) in a mass window around $m_h = 125$ GeV ($120 \text{ GeV} < m_{\gamma\gamma} < 130 \text{ GeV}$) and $m_{h'}$ = 136.5 GeV ($131 \text{ GeV} < m_{\gamma\gamma} < 141 \text{ GeV}$) in the $\gamma\gamma$ channel.

Number of events for 19.7 fb^{-1} at $\sqrt{s} = 8 \text{ TeV}$		
Higgs mass	Observed (CMS)	Expected (BLSSM)
125 GeV	610	666
136.5 GeV	170	177

V. CONCLUSIONS

In summary, if the $\sim 2.9\sigma$ hint of a second Higgs peak at ~ 137 GeV or above seen by CMS in both $ZZ \rightarrow 4l$ and $\gamma\gamma$ (and also hinted by other measurements from other experiments) after the 7 and 8 TeV runs of the LHC were to be confirmed at 13 and/or 14 TeV, this would rule out the

MSSM as an explanation while electing the BLSSM to be a possible candidate. We have illustrated this by using a benchmark point over the BLSSM parameter space, though we have verified that this is naturally possible over large expanses of it, as we have scanned over the relevant BLSSM parameters, all such situations being compliant with current experimental bounds. So far ATLAS have made no conclusive statement about the existence of such a possible second Higgs peak, so that their forthcoming data will be even more crucial in order to make a final assessment about the scenario we have investigated.

ACKNOWLEDGMENTS

The work of W. A. and S. K. is partially supported by ICTP Grant No. AC-80. S. M. is partially supported through the NExT Institute. W. A. and S. K. would like to thank N. De Filippis, A. Ali and R. Aly for fruitful discussions.

-
- [1] CMS Collaboration, *Phys. Rev. D* **89**, 092007 (2014).
- [2] CMS Collaboration, Reports No. CMS-PAS-HIG-13-001, 2013, and No. CMS-PAS-HIG-13-016, 2013.
- [3] G. Belanger, U. Ellwanger, J.F. Gunion, Y. Jiang, and S. Kraml, [arXiv:1208.4952](https://arxiv.org/abs/1208.4952).
- [4] CMS Collaboration, Report No. CMS-PAS-HIG-12-044, 2012; ATLAS Collaboration, Report No. ATLAS-CONF-2013-012, 2013; *Phys. Lett. B* **726**, 88 (2013); *Phys. Lett. B* **734**, 406(E) (2014); CDF Collaboration and D0 Collaboration, *Phys. Rev. D* **88**, 052014 (2013).
- [5] As we are intending to explain the aforementioned ZZ excess at ~ 137 GeV via a h' state, the latter can only be CP even.
- [6] S. Khalil and A. Masiero, *Phys. Lett. B* **665**, 374 (2008); P. Fileviez Perez and S. Spinner, *Phys. Rev. D* **83**, 035004 (2011); T. Kikuchi and T. Kubo, *Phys. Lett. B* **666**, 262 (2008); R.M. Fonseca, M. Malinsky, W. Porod, and F. Staub, *Nucl. Phys. B* **854**, 28 (2012). It is worth noting that the breaking of $B - L$ can occur through the vacuum expectation value (VEV) of the scalar field χ_1 or the right-handed sneutrino \tilde{N}_3^c , depending on the initial values of the Yukawa couplings and soft terms involved in the renormalization group equations (RGEs). Although there was a typo in the numerical factor of the χ_1 and \tilde{N}_3^c RGEs of the first reference in the above list, one can still break the $B - L$ symmetry radiatively through the VEV of χ_1 , albeit over a smaller region of parameter space, as emphasized in the article by Fonseca *et al.* Moreover, in Ref. [15], the authors have shown that only the χ fields obtain VEVs that break $B - L$ and keep R -parity conserved. This was implemented in the input SARAH files of the BLSSM which we have used in our numerical analysis and are given in Appendix C of this reference. Further, in Fileviez Perez *et al.*'s paper, it was shown that, for a wide region of parameter space, one can break $B - L$ through the VEV of \tilde{N}_3 . In this case, though, R -parity is also spontaneously broken and the resulting model will have a different phenomenology from the one illustrated here.
- [7] S. Khalil, *J. Phys. G* **35**, 055001 (2008).
- [8] M. Abbas and S. Khalil, *J. High Energy Phys.* **04** (2008) 056.
- [9] W. Emam and S. Khalil, *Eur. Phys. J. C* **52**, 625 (2007).
- [10] K. Huitu, S. Khalil, H. Okada, and S. K. Rai, *Phys. Rev. Lett.* **101**, 181802 (2008).
- [11] A. Elsayed, S. Khalil, and S. Moretti, *Phys. Lett. B* **715**, 208 (2012).
- [12] A. Elsayed, S. Khalil, S. Moretti, and A. Moursy, *Phys. Rev. D* **87**, 053010 (2013).
- [13] S. Khalil and S. Moretti, *Front. Phys.* **1**, 10 (2013); *J. Mod. Phys.* **04**, 7 (2013).
- [14] L. Basso and F. Staub, *Phys. Rev. D* **87**, 015011 (2013).
- [15] B. O'Leary, W. Porod, and F. Staub, *J. High Energy Phys.* **05** (2012) 042.
- [16] F. Staub, *Comput. Phys. Commun.* **184**, 1792 (2013).
- [17] W. Porod, *Comput. Phys. Commun.* **153**, 275 (2003).
- [18] W. Porod and F. Staub, *Comput. Phys. Commun.* **183**, 2458 (2012).
- [19] J. Alwall, R. Frederix, S. Frixione, V. Hirschi, F. Maltoni, O. Mattelaer, H.-S. Shao, T. Stelzer, P. Torrielli, and M. Zaro, *J. High Energy Phys.* **07** (2014) 079.
- [20] E. Conte, B. Fuks, and G. Serret, *Comput. Phys. Commun.* **184**, 222 (2013).
- [21] S. Moretti, [arXiv:1407.3511](https://arxiv.org/abs/1407.3511).
- [22] A Hammad, S. Khalil, and S. Moretti (to be published).
- [23] ATLAS Collaboration, *Phys. Lett. B* **732**, 8 (2014); CMS Collaboration, *Phys. Lett. B* **726**, 587 (2013).