

Interpretations and implications of the top quark rapidity asymmetries A_{FB}^t and A_{FB}^ℓ Edmond L. Berger,² Qing-Hong Cao,¹ Chuan-Ren Chen,^{2,3} and Hao Zhang^{2,4}¹*Department of Physics and State Key Laboratory of Nuclear Physics and Technology, Peking University, Beijing 100871, China*²*Argonne National Laboratory, High Energy Division, Argonne, Illinois 60439, USA*³*Department of Physics, National Taiwan Normal University, Taipei 116, Taiwan*⁴*Illinois Institute of Technology, Chicago, Illinois 60616-3793, USA*

(Received 7 October 2012; revised manuscript received 30 May 2013; published 23 July 2013)

Forward-backward asymmetries A_{FB}^t and A_{FB}^ℓ are observed in the top-quark t rapidity distribution and in the rapidity distribution of charged leptons ℓ from top-quark decay at the Tevatron proton-antiproton collider, and a charge asymmetry A_C is seen in proton-proton collisions at the Large Hadron Collider (LHC). In this paper, we update our previous studies of the Tevatron asymmetries using the most recent data. We provide expectations for A_C at the LHC based first on simple extrapolations from the Tevatron, and second based on new physics models that can explain the Tevatron asymmetries. We examine the relationship of the two asymmetries A_{FB}^t and A_{FB}^ℓ . We show their connection through the $(V - A)$ spin correlation between the charged lepton and the top quark with different polarization states. We show that the ratio of the two asymmetries provides independent insight into the physics interpretation of the top-quark asymmetry. We emphasize the value of the measurement of both asymmetries, and we conclude that a model which produces more right-handed than left-handed top quarks is suggested by the present Tevatron data.

DOI: [10.1103/PhysRevD.88.014033](https://doi.org/10.1103/PhysRevD.88.014033)

PACS numbers: 14.65.Ha, 14.70.Pw

I. INTRODUCTION

The observation of a larger than expected forward-backward asymmetry A_{FB}^t in the rapidity of top quarks produced at the Fermilab Tevatron collider [1,2] continues to hold considerable attention in the community of particle physicists. It is one of few manifestations of a deviation from predictions of the standard model (SM). That the deviation occurs in the top sector suggests that its interpretation might well involve new physics (NP), given that the large mass of the top quark is comparable in value to the electroweak scale. Indeed, many NP models have been proposed to explain the enhancement of A_{FB}^t . These models usually postulate the existence of new states, whether in the direct-channel coupling to $t\bar{t}$, or exchanged in a cross channel and coupling the top quark to first- and/or second-generation quarks. Examples include flavor-changing Z' [3–24], W' [25–37] and axigluon G' [38–59] models, among others [37,60–83].

Strong constraints on models of new physics come from a variety of sources, whether from low-energy precision data that limit flavor-changing couplings of the top quark, or from collider data such as the $t\bar{t}$ invariant mass distribution and the $t\bar{t}$ total cross section at the Tevatron. Models of NP also face experimental constraints from searches for new phenomena at the Large Hadron Collider (LHC) such as the absence of direct evidence thus far for new heavy gauge bosons W' [84] and Z' , and strong bounds on the cross section at the LHC for the production of pairs of same-sign top quarks [85,86].

Of particular interest to us have been the implications of models of new physics for the polarization of the top quark, and methods that can be used to measure the polarization [87]. This focus on the top-quark

polarization also serves as a unifying theme for the topics discussed in this new paper. In the SM, strong production of $t\bar{t}$ pairs in QCD yields an equal number of positive- and negative-helicity top quarks, hereafter referred to as t_R and t_L . Electroweak production in single top-quark production, for example, yields primarily t_L . Therefore, a demonstration that a significant fraction of top quarks are produced with positive helicity would herald new physics.

In addition to A_{FB}^t of the top quark, the D0 group reports a positive forward-backward asymmetry of charged leptons from top-quark decays. The measurement is done in two ways [2,88], both based on data corresponding to an integrated luminosity of 5.4 fb^{-1} . The value $A_{\text{FB}}^\ell = (15.2 \pm 4.0)\%$ is measured in the $\ell + \text{jets}$ final states [2]. The second method uses the dilepton final states from $t\bar{t}$ production, where the W bosons from the t and \bar{t} decays both decay leptonically. The result obtained is $A_{\text{FB}}^\ell = (5.8 \pm 5.1(\text{stat}) \pm 1.3(\text{syst}))\%$. A combination of the two measurements yields $A_{\text{FB}}^\ell = 11.8 \pm 3.2\%$. The combined result may be compared with the values $(2.1 \pm 0.1)\%$ from simulations of the SM or $(4.7 \pm 0.1)\%$ once QCD + electroweak (EW) corrections are included [88,89], an excess at the level of 2.2 standard deviations. In a previous paper, we investigated the kinematic and dynamic relationship between the two asymmetries A_{FB}^t and A_{FB}^ℓ [90]. The fact that A_{FB}^t and A_{FB}^ℓ are larger than the SM predictions indicates that the charged lepton strongly prefers to move in the same direction as the top quark from which it originates [91,92]. Data on the ratio of the two asymmetries tend to favor models in which more t_R than t_L are produced, but confirmation with greater statistical and systematic precision is desirable. A detailed analysis of

the SM prediction of the lepton charge asymmetry at the Tevatron and the LHC can be found in Ref. [93].

In this paper, we elaborate on the studies reported earlier and include new predictions. We begin in Sec. II with the definitions of the asymmetries measured at the Tevatron. We summarize the Tevatron data and, using the latest data, we update our earlier fits in the framework of Z' , W' , and axigluon new physics models. Unlike the Tevatron proton-antiproton collider, the LHC proton-proton collider offers no preferred direction for the measurement a rapidity asymmetry. Nevertheless, charge asymmetries A_C^t for top quarks and A_C^ℓ for leptons can be defined and predicted in the SM. Using data from the Tevatron, we estimate what may be observed for these charge asymmetries at the LHC in the context of models of new physics, and we compare these expectations with LHC data in Sec. III. As we show, despite limited statistics, the LHC data on the charge asymmetry are also consistent with a deviation from the SM, although perhaps not as great a deviation as expected from an extrapolation of the Tevatron observations.

The relationship of A_{FB}^t and A_{FB}^ℓ is addressed in Sec. IV and in the Appendix where we include detailed derivations of results not published before. The essential starting point is the $V - A$ structure of the matrix element for the decay $t \rightarrow W^+ b \rightarrow b \ell^+ \nu$. Section IVA contains a discussion of the angular distribution of the decay lepton ℓ^+ , first in the rest frame of the top quark and then after the top quark is boosted in rapidity and transverse momentum. We pay particular attention to the positive-/negative-helicity state of the top quark because the final momentum and angular distributions of leptons in the laboratory frame, after the top quark is boosted, depend significantly on the top quark's polarization state. In Sec. IV, we derive the relationship of the lepton asymmetry A_{FB}^ℓ and the top-quark asymmetry A_{FB}^t separately for the left- and right-handed polarization states of the top quark.

Different models of new physics produce top quarks with different proportions of left- and right-handed polarization. For example, Z' and W' models produce predominantly right-handed top quarks, whereas the axigluon model generates unpolarized top quarks. We use an axigluon model and a W' model in Sec. V to deduce their different expectations for the ratio of the lepton and top-quark asymmetries. In the case of both models, the allowed parameters produce a range of values for the ratios A_C^ℓ/A_C^t at the LHC and $A_{\text{FB}}^\ell/A_{\text{FB}}^t$ at the Tevatron, aligned along approximately straight lines in plots of A_C^ℓ vs A_C^t and of A_{FB}^ℓ vs A_{FB}^t . Ideally, precise data would provide a definite point in the two-dimensional plot and tightly constrain the parameter space.

Our conclusions appear in Sec. VI. We emphasize the value of making measurements both of A_{FB}^t and A_{FB}^ℓ and of A_C^ℓ and A_C^t because their ratio can be related through top-quark polarization to the underlying dynamics of top-quark production.

II. TEVATRON DATA AND UPDATED FITS

The top-quark forward-backward asymmetry in $t\bar{t}$ pair production at the Tevatron is defined as

$$A_{\text{FB}}^t = \frac{N(\Delta y > 0) - N(\Delta y < 0)}{N(\Delta y > 0) + N(\Delta y < 0)}, \quad (1)$$

where $\Delta y = y_t - y_{\bar{t}}$ is the difference between the rapidities of the top quark and the anti-top quark, and $N(\Delta y > 0)$ [$N(\Delta y < 0)$] is the number of events with $\Delta y > 0$ ($\Delta y < 0$). The proton beam is chosen as the direction of positive z . In the SM, the asymmetry is induced by perturbative diagrams beyond the leading order. It is predicted to be $(8.7 \pm 1.0)\%$, including next-to-leading-order (NLO) EW and QCD corrections [94,95]. The most recent D0 result in the $t\bar{t}$ rest frame is $A_{\text{FB}}^t = (19.6 \pm 6.5)\%$ [2], based on their 5.4 fb^{-1} luminosity data set, while the measurement from CDF is $(16.2 \pm 4.7)\%$ based on their data set with an integrated luminosity of 8.7 fb^{-1} [96]. CDF also reports that A_{FB}^t in the region of large $t\bar{t}$ pair invariant mass ($m_{t\bar{t}} \geq 450 \text{ GeV}$) exceeds the SM prediction ($\sim 3\sigma$), although the significance is not as large as the 3.4σ deviation of CDF's previous result [1]. More explicitly, $A_{\text{FB}}^t(m_{t\bar{t}} \geq 450 \text{ GeV}) = (29.6 \pm 6.7)\%$ and the SM prediction is $(12.8 \pm 1.1)\%$ [95].

Many new physics models have been proposed to explain the discrepancy of A_{FB}^t between data and the SM prediction. Some of these models are now quite sophisticated. It is not our intention in this paper to investigate models in detail. Rather, we explore a few simple models as illustrations of a range of possibilities. We begin in this section with an update of our previous fits to Tevatron data for three models: flavor-changing Z' exchange, flavor-changing W' exchange, and axigluon models. The minimal version of the Z' model implies a large rate for same-sign top-quark pair production at the LHC, not supported by data [7,85,86]. The W' model is highly constrained by data on the $t\bar{t}$ plus jets final state at the LHC [34,35,84].

The effective interaction between a flavor-changing Z'/W' and SM particles is

$$\mathcal{L} = \frac{g_2 f_{V'}}{\sqrt{2}} \bar{q} \gamma^\mu P_R t V'_\mu + \text{H.c.}, \quad (2)$$

where g_2 is the weak coupling, and $q = u(d)$ for $V' = Z'(W')$. In addition to the SM process $q\bar{q} \rightarrow g \rightarrow t\bar{t}$ and its NLO corrections, the $t\bar{t}$ pair will also be produced via a t -channel process with a Z' or W' mediator. Using “ $\lambda_i = +$ ” to represent the positive helicity of particle i (right-handed polarization for massless particle), and “ $\lambda_i = -$ ” the negative helicity (left-handed polarization for massless particle), we express the helicity amplitude $M_{V'}^t(\lambda_q, \lambda_{\bar{q}}, \lambda_t, \lambda_{\bar{t}})$, apart from a common factor $\frac{g_2^2 f_{V'}^2 \delta_{ac} \delta_{bd}}{8(\hat{t} - m_{V'}^2)}$, where a, b, c and d are the color indexes of q, \bar{q}, t and \bar{t} , as

$$\begin{aligned}
 \mathcal{M}_{V'}^t(+ - - -) &= [2 + r_V^2] \sqrt{1 - \beta^2} \sin \theta, \\
 \mathcal{M}_{V'}^t(+ - - +) &= [2(1 - \beta) + r_V^2(1 + \beta)](1 - \cos \theta), \\
 \mathcal{M}_{V'}^t(+ - + -) &= -[2(1 + \beta) + r_V^2(1 - \beta)](1 + \cos \theta), \\
 \mathcal{M}_{V'}^t(+ - + +) &= -[2 + r_V^2] \sqrt{1 - \beta^2} \sin \theta. \quad (3)
 \end{aligned}$$

The variables \hat{s} and \hat{t} are the usual Mandelstam variables, $m_{V'}$ is the mass of V' , $r_V = m_t/m_{V'}$, $\beta = \sqrt{1 - 4m_t^2/\hat{s}}$, and θ is the polar angle of the top quark in the c.m. frame of the $t\bar{t}$ pair, measured relative to the initial-state quark. In the highly boosted limit of $\beta \rightarrow 1$, the nonzero helicity amplitudes are

$$\begin{aligned}
 \mathcal{M}_{V'}^t(+ - - +) &\sim 2r_V^2(1 - \cos \theta), \\
 \mathcal{M}_{V'}^t(+ - + -) &\sim -4(1 + \cos \theta). \quad (4)
 \end{aligned}$$

For the axigluon (G') model, we assume, for simplicity, that the interaction of the axigluon with the SM quarks is purely pseudovector-like and can be written as

$$\mathcal{L} = g_s(g_l \bar{q}_i \gamma^\mu \gamma_5 q_j + g_h \bar{Q}_i \gamma^\mu \gamma_5 Q_j) t_{ij}^A G'^A, \quad (5)$$

where t_{ij}^A is the generator of the color SU(3) group; q denotes the first two generations of quarks in the SM and Q the third generation of quarks. The coupling g_s is the usual strong coupling strength; g_l and g_h are the coupling parameters of the axigluon to the light quark (q , i.e. first two generations) and the heavy quark (Q , i.e. third generation), respectively.

The process $q\bar{q} \rightarrow G' \rightarrow t\bar{t}$ contributes to $t\bar{t}$ production at hadron colliders. Its helicity amplitudes $M_{G'}(\lambda_q, \lambda_{\bar{q}}, \lambda_t, \lambda_{\bar{t}})$ are

$$\begin{aligned}
 \mathcal{M}_{G'}(+ - + -) &= \mathcal{M}_{G'}(- + - +) \\
 &= \frac{g_s^2 t_{ba}^A t_{cd}^A \hat{s} (-g_l g_h)}{\hat{s} - m_{G'}^2 + im_{G'} \Gamma_{G'}} \beta (1 + \cos \theta), \\
 \mathcal{M}_{G'}(- + + -) &= \mathcal{M}_{G'}(+ - - +) \\
 &= \frac{g_s^2 t_{ba}^A t_{cd}^A \hat{s} (-g_l g_h)}{\hat{s} - m_{G'}^2 + im_{G'} \Gamma_{G'}} \beta (1 - \cos \theta), \quad (6)
 \end{aligned}$$

where $\Gamma_{G'}$ is the width of the axigluon. For $m_{G'} > 2m_t$, which is the case in our study,

$$\Gamma_{G'} = \frac{\alpha_s m_{G'}}{6} \left\{ 4g_l^2 + g_h^2 \left[1 + \left(1 - \frac{4m_t^2}{m_{G'}^2} \right)^{3/2} \right] \right\}. \quad (7)$$

For a coupling strength $g_l = g_h = 1$, the ratio $\Gamma_{G'}/m_{G'} \sim 0.1$.

The absence of pronounced deviations from the SM expectation in the measured $m_{t\bar{t}}$ distribution [1,2] indicates that the axigluon should be heavy and/or broad. Since the term linear in $\cos \theta$ appears only in the interference term, the contribution to A_{FB}^t in $t\bar{t}$ production from an axigluon is therefore through interference with the SM channel. Its

effect becomes important in the region of large $m_{t\bar{t}}$, i.e. $\beta \sim 1$. The interference term in the overall squared amplitude is proportional to

$$\begin{aligned}
 &[2g_l g_h (1 + \cos \theta)^2 - 2g_l g_h (1 - \cos \theta)^2] \frac{\hat{s}(\hat{s} - m_{G'}^2)}{(\hat{s} - m_{G'}^2)^2 + m_{G'}^2 \Gamma_{G'}^2} \\
 &= \frac{4g_l g_h \hat{s}(\hat{s} - m_{G'}^2) \cos \theta}{(\hat{s} - m_{G'}^2)^2 + m_{G'}^2 \Gamma_{G'}^2}. \quad (8)
 \end{aligned}$$

When an axigluon is heavy such that $\sqrt{\hat{s}} < m_{G'}$, the product of $g_l g_h$ must be negative to obtain a positive A_{FB}^t [40,42,43].

We fit data at the Tevatron to determine the parameters of the three new physics models under consideration. The SM contributions at NLO are included along with the contributions from the new physics models. We choose to fit the measured inclusive total cross section for $t\bar{t}$ production $7.5 \pm 0.31(\text{stat}) \pm 0.34(\text{syst}) \pm 0.15(\text{Z theory})$ pb [97], and A_{FB}^t from CDF with 8.7 fb^{-1} integrated luminosity [96]. We scan the parameter space of the models requiring that the predictions fit the total cross section as well as A_{FB}^t for both $m_{t\bar{t}} < 450$ GeV ($7.8\% \pm 5.4\%$) and $m_{t\bar{t}} \geq 450$ GeV ($29.6\% \pm 6.7\%$) within 2σ accuracy. The SM $t\bar{t}$ cross section we adopt is 6.77 ± 0.73 pb calculated with MCFM6.2 [98]. For the SM predictions of A_{FB}^t in different energy bins, we follow the values shown in Ref. [95],

$$\begin{aligned}
 A_{\text{FB}}^t(m_{t\bar{t}} < 450 \text{ GeV}) &= (6.2 \pm 0.4)\%, \\
 A_{\text{FB}}^t(m_{t\bar{t}} \geq 450 \text{ GeV}) &= (12.8 \pm 1.1)\%. \quad (9)
 \end{aligned}$$

In addition to the observables listed above, there are also differential cross sections in the invariant mass $m_{t\bar{t}}$ and in the transverse momentum $p_{T_{t\bar{t}}}$ of the $t\bar{t}$ system. Including such data in our fits would arguably provide further constraints on the allowed parameters of the models. On the other hand, contributions from new physics tend to affect the mass distribution at large values of $m_{t\bar{t}}$, where statistics are relatively poor and therefore less constraining on fits. Moreover, and more importantly, to do a proper analysis, one would want to compute the new physics contributions at NLO, include the effects of parton showering, and model the experimental acceptance cuts whose effects are particularly significant at larger values of $m_{t\bar{t}}$. A complete analysis in terms of new physics models is also complicated by the fact that data on the $m_{t\bar{t}}$ distribution are unfolded in terms of the SM shape and cut efficiencies. Even without extending our study to include data on differential cross sections, we find significant constraints on the coupling strengths of the models, as summarized below for the Tevatron and in the next section for the LHC. Data from the LHC on same-sign top-quark production, on the production of a pair of top quarks plus one jet, and on searches for dijet resonances are used to limit the space of allowed parameters. The distinct features of the

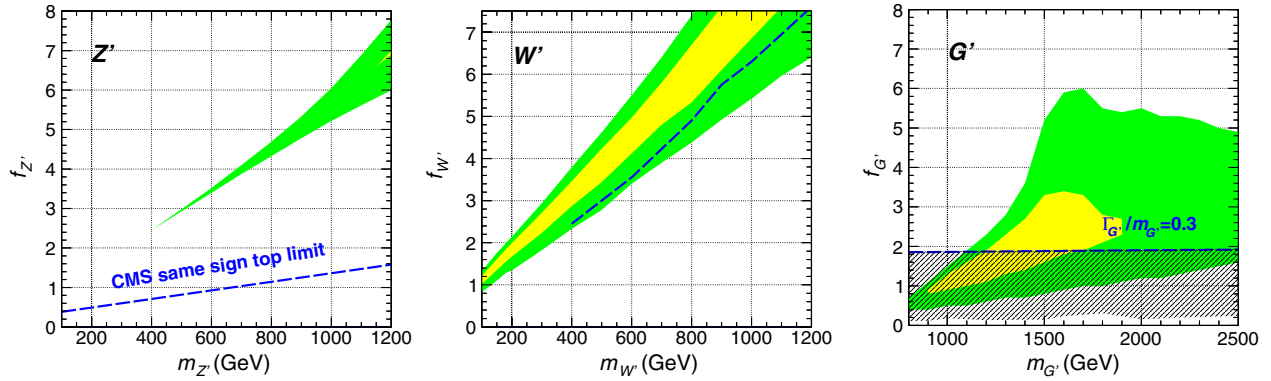


FIG. 1 (color online). The parameter space of three new physics models determined from fits to the Tevatron $t\bar{t}$ total cross section and A_{FB}^t measured by the CDF collaboration in the intervals $m_{t\bar{t}} < 450$ GeV and $m_{t\bar{t}} \geq 450$ GeV. The inner shaded (yellow) region fits the data within 1σ and the outer shaded (green) region fits within 2σ : flavor-changing Z' model, flavor-changing W' model, and axigluon model. The dashed line in (a) shows the bound obtained from the CMS search for same-sign top-quark pairs at the LHC. The dashed line in (b) shows the bound on the coupling $f_{W'}$ that we obtained from an analysis of the CMS data on top-pair-plus-one-jet events at the LHC. The cross-hatched (blue) region in (c) is inferred from the limits set by ATLAS on axigluons from the search for enhancements in the dijet mass distribution.

constrained models are instructive, as we show for the correlation between the two asymmetries A_{FB}^t and A_{FB}^b , which is a reflection of their polarization predictions.

Figure 1 shows the results of our fits for the three models. We simulate the models using MADGRAPH5 [99]. The inner (yellow) and outer (green) shaded bands are the parameter spaces which fits the Tevatron $t\bar{t}$ total cross section and A_{FB}^t within $1(2)\sigma$. For the Z' model, there is no allowed parameter space when $m_{Z'}$ is less than about 400 GeV, and only a tiny region can fit within 1σ when $m_{Z'}$ is heavier than 1100 GeV, with large couplings $f_{Z'} \gtrsim 6.6$. This conclusion differs from the one in our earlier work. The difference comes entirely from the fact that we are now fitting the most recent CDF data in which A_{FB}^t is smaller. The contribution from Z' exchange is fed by the u and \bar{u} initial states which have large parton densities at the Tevatron $p\bar{p}$ collider. Therefore, both A_{FB}^t and the $t\bar{t}$ total cross section change rapidly with the coupling $f_{Z'}$. When $f_{Z'}$ is large enough to bring the total cross section into a region that is consistent with data at the 2σ level, A_{FB}^t at high $m_{t\bar{t}}$ (≥ 450 GeV) becomes too large to fit the data. As a result, only a small parameter space yields a better fit than the SM itself, and it is very difficult to reach agreement with data within 1σ . Therefore, we now conclude that the minimal flavor-changing Z' model can barely explain the large deviation of A_{FB}^t from the SM observed at the Tevatron. In Fig. 1 (Z'), we also plot the upper limit of the coupling for the Z' model obtained from the search of same-sign top-quark pairs at the LHC [86]. The region above the dashed curve is not allowed since too many same-sign top-quark pairs would be produced. The minimal version of the Z' model is definitely disfavored.

In contrast to the Z' case, there is a large region of parameter space in which the W' model can fit the Tevatron data within 1σ and 2σ , as shown in Fig. 1 (W').

We scan the coupling $f_{W'}$ in the W' model up to 7.5 in our numerical study.¹ We see that the W' model can fit data quite well with $m_{W'} \lesssim 1$ TeV for the coupling parameter $f_{W'} \lesssim 7.5$. The asymmetry and the $t\bar{t}$ cross section do not change as sharply with coupling in the W' model as they do in the Z' case since their contributions are fed by the smaller d and \bar{d} parton densities. The upper limit of the coupling for the W' model is shown in the figure. We obtain this upper limit from an analysis of the CMS data on the production of a top pair plus one jet [84]. The region above the dashed curve is not allowed since too many $t\bar{t} + j$ events would be produced. The data were not analyzed for values of the W' mass below 400 GeV so we do not show a constraint below this value. There is a similar constraint from ATLAS [100], but we do not use the bound shown in their Fig. 6 because the interference term between the SM and the W' model is not considered in the determination of their bound. This interference is not negligible [35,37]. We see that some region of the parameter space of the W' model remains open. The contribution to A_{FB}^t at the Tevatron from top- W' associated production is not incorporated in our study since it is small at Tevatron energies owing to phase-space and gluon parton distribution function suppression.

In the axigluon case, we scan g_t and g_b up to 8. For simplicity, we fix $g_t = -g_b = f_{G'}$ in Eqs. (6) and (7). To achieve good agreement with data at the 1σ level, the mass of the axigluon is required to be in the range of about 900 to 1900 GeV. For other axigluon masses, the model can only fit data at the 2σ level. These results are shown in Fig. 1 (G'). In Fig. 1 (G'), we also show some bounds on axigluon

¹The upper bound on the coupling is set here by the choice of a perturbative bound $g_s^2 f_{W'}^2 / (2 \times 4\pi) \leq 1$, which means $f_{W'} \leq 7.7$.

masses and couplings obtained from a search for resonances in the dijet invariant mass distribution [101–104]. To obtain the lower bound on the coupling constant $f_{G'}$, we generate parton-level dijet events in the axigluon model using MADGRAPH5 and MADEVENT [99]. After adding the cuts on the final-state partons employed in Refs. [101–104], we obtain the cross sections $\sigma \times \mathcal{A}$, where \mathcal{A} represents acceptance. Comparing these results with the exclusion bound in Refs. [101–104], we derive the lower bounds of the excluded region for $f_{G'}$ as a function of the axigluon mass, shown in Fig. 1 (G'). On the other hand, axigluons with a large width cannot be excluded using the search technique described in the ATLAS paper. The contribution from a broad axigluon would cover a large fraction of the search region in the dijet invariant mass and be absorbed into the data-driven background fit. To account for this limitation of the search, we sketch a soft upper limit of the exclusion region in $f_{G'}$ determined by the value $\Gamma_{G'}/m_{G'} = 0.3$ [the (blue) cross-hatched region in Fig. 1 (G')].

Before concluding this discussion of fits to the Tevatron data, we acknowledge limitations of our approach. For the three new physics models, we compare the $t\bar{t}$ forward-backward asymmetry with the unfolded data of the CDF collaboration. The unfolded result is obtained under the assumption that the events follow the SM $t\bar{t}$ event distribution, so the comparison is not exact for new physics models. The correction could be significant for t -channel exotic vector bosons. Indeed, the authors of Ref. [10] have shown that the cut efficiency is larger in the SM in the region of large $m_{t\bar{t}}$ than for the case of a t -channel exotic vector boson. There are two main influences of this difference [10]. First, the lower efficiency of the t -channel new physics models, especially in the large- $m_{t\bar{t}}$ region, will suppress the number of large- $m_{t\bar{t}}$ events in the new physics models and release the tension between theory and data. However, in our analysis, we do not fit the differential cross section in $m_{t\bar{t}}$, only the cross section integrated over $m_{t\bar{t}}$. Since the cross section falls rapidly with $m_{t\bar{t}}$, the pertinent correction is relatively small in our fit. Second, the difference between the cut efficiencies for events with $\Delta y > 0$ and $\Delta y < 0$ in the new physics models will decrease the prediction of A_{FB}^t . Such effects were shown in Ref. [10] to be not as large as the cut-efficiency effect on the invariant mass distribution. It is worth remarking that the NLO QCD correction for the pure new physics term and for the NP-SM interference term is larger in the large-invariant mass region than in the low-invariant mass region [33]. The NLO QCD correction will therefore counteract the cut-efficiency effect at least partly. A complete investigation that includes both the NLO and cut efficiency effects is desirable, but we judge that the simpler approach used here suffices for our limited purposes.

To summarize this section, we remark that based on the latest A_{FB}^t data from CDF at the Tevatron, the simple

Z' model is disfavored, and a light W' (≤ 1 TeV) is preferred for a small coupling strength, while an axigluon model can give a good fit with an axigluon mass about 1200–1900 GeV.

III. LHC PROTON-PROTON COLLIDER

In this section we address the charge asymmetry in rapidity A_C measured at the LHC. We obtain estimates of LHC expectations first by simple extrapolation from the Tevatron data on A_{FB}^t and second based on the new physics models whose parameters we determined in Sec. II.

The proton-proton LHC collider is symmetric in rapidity, and it is ambiguous to define the forward or backward region. However, the u and d (valence quarks inside the proton) parton densities carry, on average, a larger fraction of the momentum of the proton than the u and d antiquark densities (sea quarks inside the proton). With the knowledge that there is a forward-backward asymmetry in the perturbative production process for $q\bar{q} \rightarrow t\bar{t}$ production, we expect that the top quark at the LHC will be boosted in the direction of the incident quark. As a result, top quarks should accumulate in the region of large rapidity and anti-top quarks will be preferentially in the central region. Therefore, one can define an asymmetry A_C at the LHC as

$$A_C = \frac{N(|y_t| > |y_{\bar{t}}|) - N(|y_t| < |y_{\bar{t}}|)}{N(|y_t| > |y_{\bar{t}}|) + N(|y_t| < |y_{\bar{t}}|)}. \quad (10)$$

The SM prediction including NLO EW and QCD contributions is $A_C = 0.0115$ at 7 TeV center-of-mass energy [95], and the predicted value drops when the collider energy increases. The event generator MC@NLO provides a slightly different result, $A_C = 0.006$ [105], owing to different normalization and the absence of NLO EW corrections.

Recent measurements of A_C at the LHC have been published by the CMS and ATLAS collaborations based on data sets with 4.7 fb^{-1} of integrated luminosity. The results from CMS [106] obtained from the lepton plus jet final state and ATLAS [105] obtained from combining both lepton plus jet and dilepton channels are

$$\begin{aligned} \text{CMS(lepton + jets): } & 0.004 \pm 0.010(\text{stat}) \pm 0.012(\text{syst}), \\ \text{ATLAS(combined): } & 0.029 \pm 0.018(\text{stat}) \pm 0.014(\text{syst}). \end{aligned} \quad (11)$$

The ATLAS central value is an order of magnitude larger than the CMS value, but they agree within the large uncertainties in both experiments, and they are consistent with the SM prediction.

At the LHC, $t\bar{t}$ production is dominated by the gluon-gluon initial state which provides no asymmetry, and the asymmetry A_C generated by the quark-antiquark initial state is therefore expected to be diluted substantially. An approximate estimate for the LHC asymmetry is

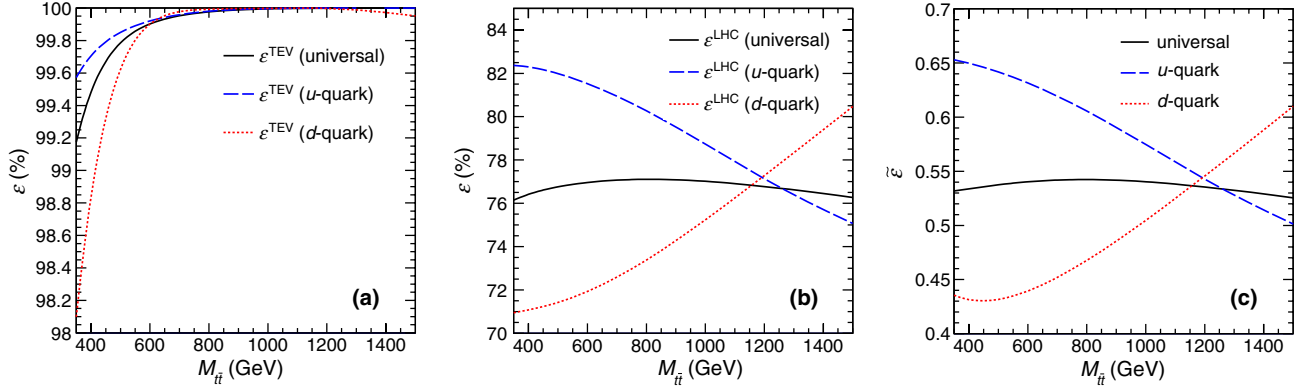


FIG. 2 (color online). (a) The probability of choosing the correct forward direction, the direction of initial-state quark at the Tevatron. (b) The probability of choosing the correct forward direction, the direction of initial-state quark at the LHC. For the “universal” case, we include all four flavors of light quarks with equal weight when we calculate ε . For the “ $u(d)$ -quark” case, we include only the contribution from the $u(d)$ -quark. We do not show the behavior of other light flavors because they are sea quarks at the Tevatron and do not give a significant contribution to A_{FB}^t . (c) The relative suppression factor $\tilde{\varepsilon}$ for the universal, u -quark, and d -quark cases.

$$A_C^t \approx \frac{\sigma(q\bar{q} \rightarrow t\bar{t})}{\sigma(gg \rightarrow t\bar{t}) + \sigma(q\bar{q} \rightarrow t\bar{t})} \times A_{\text{FB}}^t(q\bar{q} \rightarrow t\bar{t}) \times \tilde{\varepsilon}. \quad (12)$$

The first term represents the fraction of the top-quark pair production cross section induced by the $q\bar{q}$ initial state which is about 17% in the SM at 7 TeV LHC. The second term is the asymmetry induced by the $q\bar{q}$ initial state. Given that about 88% of the $t\bar{t}$ production cross section in the SM comes from the $q\bar{q}$ initial state at the Tevatron, $A_{\text{FB}}^t(q\bar{q} \rightarrow t\bar{t})$ can be extracted from the top-quark forward-backward asymmetry observed at the Tevatron; we use $A_{\text{FB}}^t(q\bar{q} \rightarrow t\bar{t}) \approx A_{\text{FB}}^t/88\%$, where A_{FB}^t is the measured top-quark asymmetry. The last term $\tilde{\varepsilon}$ in Eq. (12) represents the probability of correctly identifying the forward direction, namely how frequently the forward direction represents the direction of the initial-state quark. This probability has to be evaluated for both the Tevatron and the LHC.

At the Tevatron, the momentum of the proton beam is chosen as the forward direction. Therefore, the probability is

$$\varepsilon^{\text{TEV}} = \frac{\sigma(q\bar{q} \rightarrow t\bar{t})_{q/p, \bar{q}/\bar{p}}}{\sigma(q\bar{q} \rightarrow t\bar{t})_{\text{total}}}, \quad (13)$$

where the denominator is the total cross section of $q\bar{q} \rightarrow t\bar{t}$ and the numerator is the contribution to the total cross section when the initial-state quark and antiquark come from a proton and antiproton, respectively. An explicit evaluation can be obtained from the integral over parton densities,

$$\varepsilon^{\text{TEV}}(\hat{s}) = \frac{\sum_q \int_{\hat{s}/S}^1 f_{q/p}(x_1) f_{\bar{q}/\bar{p}}(\frac{\hat{s}}{x_1 S}) \frac{dx_1}{x_1}}{\sum_q \int_{\hat{s}/S}^1 [f_{q/p}(x_1) f_{\bar{q}/\bar{p}}(\frac{\hat{s}}{x_1 S}) + f_{\bar{q}/p}(x_1) f_{q/\bar{p}}(\frac{\hat{s}}{x_1 S})] \frac{dx_1}{x_1}}, \quad (14)$$

where S is the square of the total energy of the $\bar{p}p$ collision and \hat{s} denotes the square of the energy in the partonic collision.

At the LHC, with no preferred direction in a proton-proton collider, the boost direction of the $t\bar{t}$ system is chosen to be the forward direction. Hence, the probability of choosing the forward direction correctly is

$$\varepsilon^{\text{LHC}} = \frac{\sigma(q\bar{q} \rightarrow t\bar{t})_{q>\bar{q}}}{\sigma(q\bar{q} \rightarrow t\bar{t})_{\text{total}}}, \quad (15)$$

where the numerator now is the contribution to the total cross section when the initial-state quark momentum is larger than the initial-state antiquark momentum. The corresponding integral over parton densities is

$$\varepsilon^{\text{LHC}}(\hat{s}) = \frac{\sum_q \int_{\sqrt{\hat{s}/S}}^1 f_{q/p}(x_1) f_{\bar{q}/p}(\frac{\hat{s}}{x_1 S}) \frac{dx_1}{x_1}}{\sum_q \int_{\hat{s}/S}^1 f_{q/p}(x_1) f_{\bar{q}/p}(\frac{\hat{s}}{x_1 S}) \frac{dx_1}{x_1}}. \quad (16)$$

We evaluate the efficiencies explicitly using the Martin-Stirling-Thorne-Watt parton distribution functions (PDFs) [107]. The efficiencies vary with the invariant mass of the $t\bar{t}$ system, as shown in Fig. 2. At the Tevatron, the value of ε^{TEV} is nearly 100%, and the proton (antiproton) beam represents the direction of the initial quark (antiquark) quite well. However, at the LHC, the probability ε^{LHC} that the initial quark direction matches the boost direction of the $t\bar{t}$ system is lower. We find values in the range 72%–83%, depending upon the initial-state quark and the effective energy of the $t\bar{t}$ c.m. system (Fig. 2). Since the values of the ε 's are not 100% at the LHC, the wrong choice of forward direction decreases the absolute value of A_{FB}^t .

The measured number of forward (backward) events is therefore $N_F \varepsilon + N_B(1 - \varepsilon)$ [$N_B \varepsilon + N_F(1 - \varepsilon)$], where $N_{F(B)}$ is the true number of events in the forward region.

As a result, the measured A_{FB}^t equals $A_{\text{FB}}^{t,\text{true}} \times (2\epsilon - 1)$. The suppression factor $\tilde{\epsilon}$ defined in Eq. (12) is shown on the right side of Fig. 2. Its value is

$$\tilde{\epsilon} = \frac{2\epsilon^{\text{LHC}} - 1}{2\epsilon^{\text{TEV}} - 1} \approx (54 \pm 10)\%. \quad (17)$$

Combining all terms, we expect that $A_C^t \simeq 0.17 \times A_{\text{FB}}^t / 88\% \times 54\% \simeq 0.1A_{\text{FB}}^t$, where we recall that A_{FB}^t is the value measured at the Tevatron.

Taking $A_{\text{FB}}^t \sim 20\%$, we see that an extrapolation from the Tevatron provides a rough estimate for the LHC of $A_C \simeq 0.02$, in reasonable agreement with the central value of the ATLAS measurement but in excess of the central value of the CMS measurement. Setting aside for the moment the still large uncertainties of the LHC data, the agreement of the ATLAS measurement with our extrapolation lends credence to the suggestion that new physics contributions are playing a role in the asymmetry measured at the Tevatron. On the other hand, there is evident tension between the Tevatron asymmetry and the central value of the CMS measurement.

Our model-based predictions of A_C , to be discussed presently, provide values of A_C a little higher than the simple extrapolation. The difference arises because the new physics contributions change the fraction of the $q\bar{q}$ initial-state contribution to $t\bar{t}$ production at the Tevatron and the LHC. The SM prediction for the $t\bar{t}$ cross section is 150 ± 19 pb [98], and the ATLAS measurement is $177 \pm 3(\text{stat})_{-7}^{+8}(\text{syst}) \pm 7(\text{lumi})$ pb [108]. In the W' and axigluon models, the contribution to $t\bar{t}$ production from new physics comes only through the $q\bar{q}$ initial state. When the new physics contribution compensates for the excess of the measured $t\bar{t}$ cross section above the SM contribution, the fraction from $q\bar{q} \rightarrow t\bar{t}$ to $t\bar{t}$ at 7 TeV can increase to about 30% compared with 17% in SM. Therefore, we can expect $A_C \simeq 0.2A_{\text{FB}}^t$, a factor of 2 enhancement with respect to our previous estimate.

The analysis above provides an estimation of A_C at the LHC from A_{FB}^t at the Tevatron. It should be used carefully as there are reasons that it may not be good enough. First, contributions from $t\bar{t}$ processes with extra partons in the final state are not included in the estimation. They might be important for some new physics models, especially for A_C [22,23,36]. Second, there are models in which A_{FB}^t at the Tevatron is a residue of the balance between contributions from $u\bar{u}$ and $d\bar{d}$ initial states [83]. In this case, A_C at the LHC could vary over a wide range since the fraction of the $u\bar{u}$ and $d\bar{d}$ initial states is different at the LHC, and $\tilde{\epsilon}$ for the u quark and d quark is different and dependent on the effective energy of the $t\bar{t}$ center of mass. Third, for new physics models in which the A_{FB}^t results from a resonance effect, there will be a suppression (enhancement) if the resonance is heavy (light) [48,59].

Turning next to the explicit new physics models discussed in the previous section, we use the allowed

parameters for the flavor-changing W' and axigluon models shown in Fig. 1 to calculate A_C at the LHC. The results are shown in Fig. 3, along with a comparison to the results of ATLAS and CMS. We show different theory predictions for ATLAS and CMS. The difference in the assumed value of the SM contribution explains the differences in the predictions of A_C in Fig. 3. To obtain the ATLAS predictions we use $A_C = 0.006$ for the SM prediction, as done by ATLAS. For the CMS comparison, we use the SM value $A_C = 0.0115$ adopted by CMS.

The values A_C for the W' model at 7 TeV are in the range 0.01–0.1. The sharp drop for $m_{W'} = 850$ GeV–1200 GeV is related to our upper cut of the coupling parameter $g_{W'}$ at 7.5. Most of the values of A_C predicted in the W' model are larger than the ATLAS central value; however, they are within the 1σ uncertainty band. For the axigluon model, all of the predictions of A_C agree with the ATLAS result within the 1σ level. In the axigluon model A_C does not simply increase with the axigluon coupling to SM particles. For $m_{G'} = 1500$ GeV, A_C reaches its maximum at about 4.2%, with coupling $f_{G'} = 2.7$. Therefore, we can see that the upper boundary of the inner shaded (yellow) region (couplings that fit Tevatron data within 1σ) overlaps the outer shaded (green) region (couplings that fit Tevatron data within 2σ) for some $m_{G'}$. The G' model predicts smaller values of A_C than the W' model because there is a change of the sign of the s -channel propagator. When the invariant mass of the $t\bar{t}$ system is larger than the mass of the axigluon, the contribution to A_C from the interference term is negative. In comparing with the CMS data, we see that owing to the large contribution from new physics, the predicted values of A_C are outside of the 1σ band. Unless the central value increases in updated measurements, the CMS data disagree with new physics models based on W' or axigluon contributions.

For the W' (and other t -channel new physics models), the associated production process $d(\bar{d}) + g \rightarrow t(\bar{t}) + W' \rightarrow t\bar{t} + d(\bar{d})$ may also give a significant contribution to A_C . In Refs. [22,23], such effects are investigated for a non-self-conjugate Z' model. The large gluon parton density accentuates the cross section for a relatively light Z' and W' , yielding a negative contribution to A_C [22,23] and releasing the tension between the small measurement at the LHC and the large predictions from the new physics models. The overlap between the predictions and the experimental bounds will be larger than those shown in Fig. 3. However, a complete analysis must take into account interference between $t\bar{t} + j$ in the SM and the W' model [35,37] and a large enhancement from NLO QCD corrections (K -factor ~ 1.3 – 1.5 [36]). We defer it for a future study.

IV. A_{FB}^{ℓ} AND ITS CORRELATION WITH A_{FB}^t

In addition to the top-quark forward-backward asymmetry, the charged lepton asymmetry A_{FB}^{ℓ} is also measured by

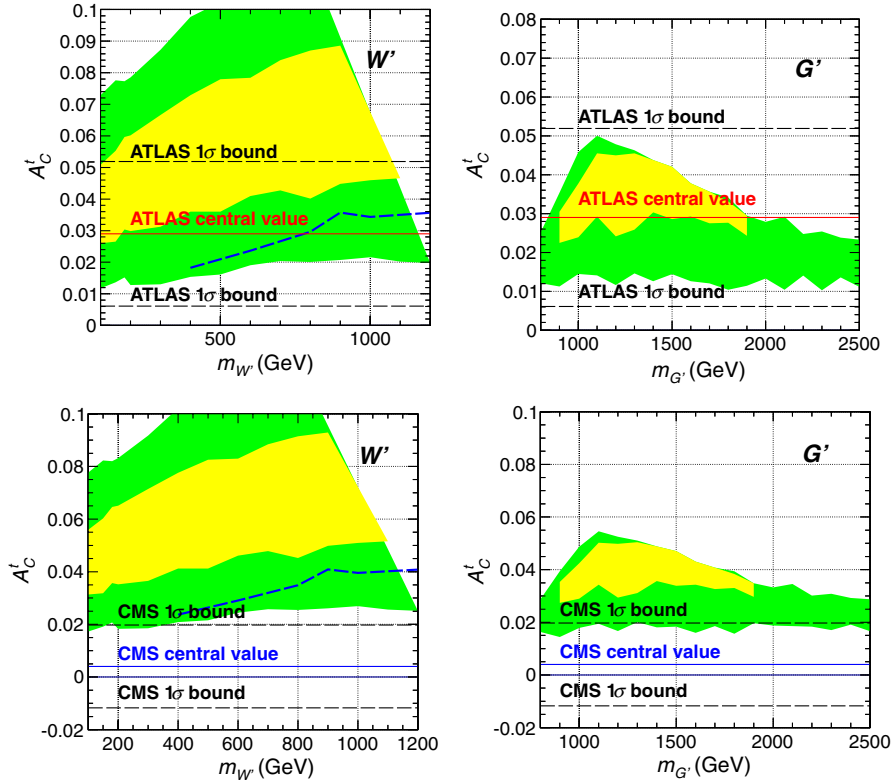


FIG. 3 (color online). The predicted top-quark charge asymmetry, A_C^t , at the LHC at 7 TeV from the W' (left) and axigluon (right) models, compared with the ATLAS (upper) and CMS (lower) results. The inner shaded (yellow) and outer shaded (green) regions are for the couplings that fit the Tevatron $t\bar{t}$ total cross section and A_{FB}^t within 1σ and 2σ , respectively. The central value measured by ATLAS (CMS) at the LHC is marked with a (red/blue) horizontal line, and the (black) horizontal dashed lines show the 1σ uncertainty of the measurement. The irregular (blue) dashed lines on the W' figures show the bounds obtained from the analysis of top-pair-plus-one-jet events. The regions above these dashed lines are disfavored.

the D0 collaboration at the Tevatron and by the ATLAS collaboration at the LHC. It is defined as

$$A_{\text{FB}}^\ell = \frac{N_\ell^+ - N_\ell^-}{N_\ell^+ + N_\ell^-}. \quad (18)$$

At the Tevatron, N_ℓ^+ (N_ℓ^-) is the number of events with $q_\ell y_\ell > 0$ ($q_\ell y_\ell < 0$), and q_ℓ and y_ℓ are the sign and rapidity respectively of the charged lepton from the semileptonic decay of a top or anti-top quark in the lepton plus jets events of $t\bar{t}$ production. As stated in the Introduction, the D0 group reports $A_{\text{FB}}^\ell = (11.8 \pm 3.2)\%$, a deviation of about 2.2σ above the SM prediction $4.7 \pm 0.1\%$ [88]. At the LHC, the ATLAS collaboration measures A_{FB}^ℓ using data from the dilepton channel in $t\bar{t}$ events; N_ℓ^+ (N_ℓ^-) represents the number of events with $|y_{\ell^+}| - |y_{\ell^-}| > (<)0$. Based on data corresponding to 4.7 fb^{-1} of integrated luminosity, ATLAS finds $(2.3 \pm 1.2(\text{stat}) \pm 0.8(\text{syst}))\%$, in excess of the SM prediction 0.4% but within 2σ [105].

The top quark is the only quark that decays quickly, before hadronization takes place, and its polarization determines the kinematic distribution of its final-state

particles. Therefore, it should be possible to understand A_{FB}^ℓ based on the kinematics of the charged lepton in the decay of a top quark with different polarization states. Before presenting our numerical predictions for A_{FB}^ℓ in Sec. V, we show analytically how the relationship of A_{FB}^ℓ and A_C^t is controlled by the top-quark polarization. In this section, we start with the kinematics of a charged lepton in top-quark decay and derive the correlation between A_{FB}^ℓ and A_C^t . We introduce a variable R_F that is useful for bridging the lepton asymmetry and the top-quark asymmetry.

A. Lepton kinematics and top-quark polarization

The charged lepton in top-quark decay is a powerful analyzer of the polarization of the top quark [109]. Owing to the $V - A$ structure of the charged current in the SM, the angular distribution of a charged lepton ℓ^+ from top-quark decay [$t \rightarrow W^+(\rightarrow \ell^+ \nu)b$] in the top-quark rest frame is

$$\frac{1}{\Gamma} \frac{d\Gamma}{d \cos \theta_{\text{hel}}} = \frac{1 + \lambda_t \cos \theta_{\text{hel}}}{2}, \quad (19)$$

where λ_t denotes the top-quark helicity, and θ_{hel} is the angle of ℓ^+ with respect to the direction of motion of the

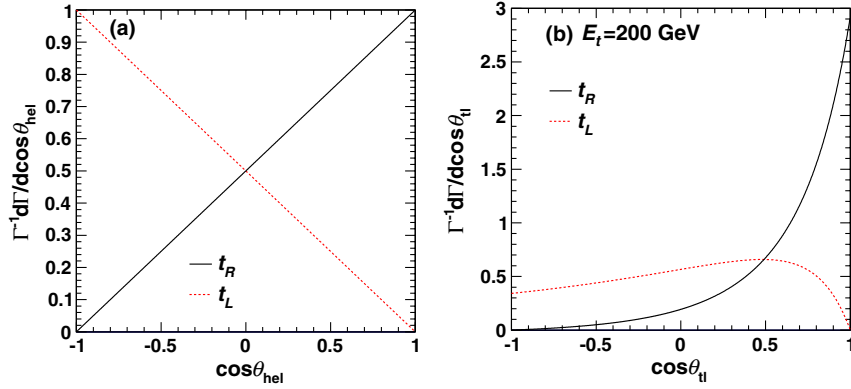


FIG. 4 (color online). (a) $\cos \theta_{\text{hel}}$ distribution in the top-quark rest frame for both t_L and t_R . (b) $\cos \theta_{t\ell}$ distribution in the boosted frame for a top quark with $E_t = 200$ GeV.

top quark in the overall center-of-mass system of the $t\bar{t}$ production process. Throughout this paper, we use the helicity basis in our calculations. We use $\lambda_t = +$ to denote a right-handed top quark (t_R), and $\lambda_t = -$ for a left-handed top quark (t_L). The distributions are shown in Fig. 4(a). The charged lepton from a right-handed top-quark decay prefers to move along the top-quark direction of motion, while a lepton from a left-handed top quark moves preferentially against the top-quark direction of motion. In the rest frame of the top quark, 75% (25%) of charged leptons from t_R (t_L) decay follow the top-quark direction of motion, i.e. $\cos \theta_{\text{hel}} > 0$.

Once the top quark is boosted along its spin direction, the angular distribution of the charged lepton relative to the direction of motion of the top quark deviates from $(1 \pm \cos \theta)$, and it becomes sensitive to the energy of the top quark E_t (or equivalently its velocity β). We derive

$$\frac{d\Gamma}{\Gamma d\cos \theta_{t\ell}} = \frac{1 - \beta \cos \theta_{t\ell} + \lambda_t (\cos \theta_{t\ell} - \beta)}{2\gamma^2 (1 - \beta \cos \theta_{t\ell})^3}, \quad (20)$$

where $\beta = \sqrt{1 - m_t^2/E_t^2}$, $\gamma = E_t/m_t$ and $\theta_{t\ell}$ is the angle between the charged lepton and the direction of motion of its parent top quark. As an illustration, we plot in Fig. 4(b) the distribution of $\cos \theta_{t\ell}$ of the charged lepton for

$E_t = 200$ GeV. The leptons from both t_L and t_R move preferentially forward, more so for t_R than t_L . About 60% of ℓ^+ follow the top quark (i.e., $\cos \theta_{t\ell} > 0$) for t_L , and almost 100% for t_R .

To obtain the forward-backward asymmetry in the laboratory frame, we must rotate the angular distribution in Eq. (20) from the top direction of motion to the laboratory coordinate axes. We use a function $R_F^{\ell, \lambda_t}(\beta, y_t)$ to represent the probability that a lepton with positive charge lands in the forward region when it originates from a top quark with velocity β , rapidity y_t , and polarization λ_t . Formally,

$$R_F^{\ell, \lambda_t}(\beta, y_t) = \frac{N_F^\ell}{N_F^\ell + N_B^\ell}, \quad (21)$$

where N_F^ℓ (N_B^ℓ) denotes the number of leptons ℓ in the forward (backward) region in the laboratory. Moreover,

$$R_{\text{FB}}^{\ell, \lambda_t}(\beta, y_t) = 2R_F^{\ell, \lambda_t}(\beta, y_t) - 1. \quad (22)$$

It is noteworthy that an explicit analytic expression can be obtained for $R_F^{\ell, \lambda_t}(\beta, y_t)$ in the laboratory frame. The derivation is somewhat lengthy, and it is presented in Appendix A 3. We obtain

$$R_F^{\ell, \lambda_t}(\beta, y_t) = \begin{cases} \frac{1}{2} + \frac{1}{2(1 + \gamma^{-2} \coth^2 y_t)^{1/2}} + \frac{\lambda_t \coth^2 y_t}{4\beta \gamma^2 (1 + \gamma^{-2} \coth^2 y_t)^{3/2}}, & y_t \in [0, y_t^{\text{max}}], \\ \frac{1}{2} - \frac{1}{2(1 + \gamma^{-2} \coth^2 y_t)^{1/2}} - \frac{\lambda_t \coth^2 y_t}{4\beta \gamma^2 (1 + \gamma^{-2} \coth^2 y_t)^{3/2}}, & y_t \in [-y_t^{\text{max}}, 0], \end{cases} \quad (23)$$

where

$$y_t^{\text{max}} = \frac{1}{2} \ln \frac{1 + \beta}{1 - \beta}. \quad (24)$$

Figures illustrating the behavior of $R_F^{\ell, \lambda_t}(\beta, y_t)$ as a function of y_t for different choices of E_t , and as a function of y_t for different choices of p_t may be found in our Ref. [90], along with a discussion of interesting kinematic

features of the curves. We limit ourselves here to showing Fig. 5 and invite readers to consult our Ref. [90]. The energy $E_t = 200$ GeV represents top quarks produced just above the threshold region, where the cross section is greatest, while $E_t = 600$ GeV pertains to highly boosted top quarks. For right-handed top quarks t_R (black solid lines in Fig. 5), R_F increases rapidly with y_t in the region $y_t > 0$. On the contrary, in the case of t_L 's, the ratio R_F does not vary as significantly with y_t . For $E_t = 200$ GeV,

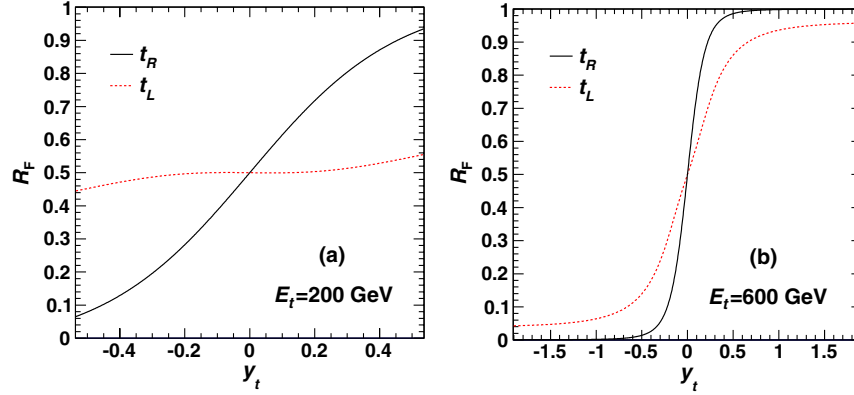


FIG. 5 (color online). The ratio R_F as a function of y_t for a top quark with fixed energy: (a) $E_t = 200$ GeV and (b) $E_t = 600$ GeV.

the boost causes charged leptons to distribute nearly uniformly, and as a result, R_F is close to 0.5 for the allowed range of y_t . When the energy of the top quark is great enough, the large boost forces most of the charged leptons from top-quark decays to move along the top-quark direction of motion, even for t_L .

B. From A_{FB}^t to A_{FB}^ℓ

The functions $R_F^{\ell, \lambda_t}(\beta, y_t)$ in Eq. (21) and $A_{\text{FB}}^{\ell, \lambda_t}(\beta, y_t)$ in Eq. (22) are functions of the top-quark momentum. To obtain the numbers of leptons in the forward and backward regions, we must convolve $R_F^{\ell, \lambda_t}(\beta, y_t)$ with the top-quark momentum spectrum on an event-by-event basis, i.e.

$$\frac{N_{\text{F}}^\ell}{N_{\text{F}}^\ell + N_{\text{B}}^\ell} = \frac{1}{\sigma} \sum_{\lambda=+,-} \int R_F^{\lambda}(\beta, y_t) \frac{d^2\sigma|_{\lambda_t=\lambda}}{d\beta dy_t} d\beta \wedge dy_t, \quad (25)$$

$$\frac{N_{\text{B}}^\ell}{N_{\text{F}}^\ell + N_{\text{B}}^\ell} = \frac{1}{\sigma} \sum_{\lambda=+,-} \int [1 - R_F^{\lambda}(\beta, y_t)] \frac{d^2\sigma|_{\lambda_t=\lambda}}{d\beta dy_t} d\beta \wedge dy_t, \quad (26)$$

$$A_{\text{FB}}^\ell = \frac{1}{\sigma} \sum_{\lambda=+,-} \int [2R_F^{\lambda}(\beta, y_t) - 1] \frac{d^2\sigma|_{\lambda_t=\lambda}}{d\beta dy_t} d\beta \wedge dy_t, \quad (27)$$

where $\frac{d^2\sigma|_{\lambda_t=\lambda}}{d\beta dy_t}$ labels the differential $t\bar{t}$ production cross section for a top quark with specific kinematics (β, y_t, λ_t) and σ stands for the $t\bar{t}$ total production cross section.

The observed positive top-quark asymmetry A_{FB}^t indicates that more top quarks are produced in the forward region than in the backward region of rapidity. Both t_R and t_L can generate a positive lepton asymmetry A_{FB}^ℓ from a positive A_{FB}^t . However, a t_L would need a large boost along the proton beam line (i.e. in the large-forward-rapidity region) to overcome the fact that most of the charged leptons from its decay move against it in its rest frame. A right-handed top quark t_R can yield a positive A_{FB}^ℓ even for top quarks near the $t\bar{t}$ threshold region. Therefore, the large positive top-quark and lepton asymmetries A_{FB}^t and A_{FB}^ℓ

observed by the D0 collaboration indicate that the top-quark polarization and the kinematics of the top quarks, y_t and E_t , may be playing a nontrivial role.

In the SM, the vector coupling of gluons in the SM leads to equal production of left-handed and right-handed top quarks in the final state. After performing the convolutions in Eq. (27), we obtain

$$\frac{A_{\text{FB}}^\ell}{A_{\text{FB}}^t} \simeq \frac{(0 + 0.8)}{2} = 40\% \quad (28)$$

in the SM at Tevatron. The first term in the numerator is the contribution from left-handed top quarks, and the second term is from the right-handed top quarks. This estimate agrees well with explicit NLO calculations [2].

This SM expectation may be contrasted with the value

$$\frac{A_{\text{FB}}^\ell}{A_{\text{FB}}^t} = (78 \pm 33)\% \quad (29)$$

obtained from the D0 measurements of A_{FB}^t and $A_{\text{FB}}^\ell = (15.2 \pm 4.0)\%$ measured in the $\ell + \text{jets}$ final states [2]. On the other hand, using the value $A_{\text{FB}}^\ell = (11.8 \pm 3.2)\%$ obtained from a combination of measurements in the dilepton final states from $t\bar{t}$ production and the $\ell + \text{jets}$ final states, we find

$$\frac{A_{\text{FB}}^\ell}{A_{\text{FB}}^t} = (60 \pm 26)\%. \quad (30)$$

The uncertainties are large, but the central values of these ratios exceed the SM estimate and indicate that the physics responsible for the forward-backward asymmetry produces more right-handed than left-handed top quarks. It would be valuable to confirm the measurement of A_{FB}^ℓ with the full data sample in D0 and to make a similar measurement with CDF data.

The top-quark asymmetry A_{FB}^t can be expressed as a sum of contributions from the SM and NP as

$$\begin{aligned}
 A_{\text{FB}}^t &= \frac{(N_{\text{F}}^{\text{NP}} + N_{\text{F}}^{\text{SM}}) - (N_{\text{B}}^{\text{NP}} + N_{\text{B}}^{\text{SM}})}{(N_{\text{F}}^{\text{NP}} + N_{\text{F}}^{\text{SM}}) + (N_{\text{B}}^{\text{NP}} + N_{\text{B}}^{\text{SM}})} \\
 &= A_{\text{FB}}^{t,\text{NP}} \times R^{\text{NP}} + A_{\text{FB}}^{t,\text{SM}} \times (1 - R^{\text{NP}}), \quad (31)
 \end{aligned}$$

where

$$\begin{aligned}
 A_{\text{FB}}^{t,\text{SM}} &= \frac{N_{\text{F}}^{\text{SM}} - N_{\text{B}}^{\text{SM}}}{N_{\text{F}}^{\text{SM}} + N_{\text{B}}^{\text{SM}}}, & A_{\text{FB}}^{t,\text{NP}} &= \frac{N_{\text{F}}^{\text{NP}} - N_{\text{B}}^{\text{NP}}}{N_{\text{F}}^{\text{NP}} + N_{\text{B}}^{\text{NP}}}, \\
 R^{\text{NP}} &= \frac{N_{\text{tot}}^{\text{NP}}}{N_{\text{tot}}^{\text{SM}} + N_{\text{tot}}^{\text{NP}}}, \quad (32)
 \end{aligned}$$

with $N_{\text{F(B)}}^{\text{SM}}$ and $N_{\text{F(B)}}^{\text{NP}}$ being the numbers of events in which the top quark moves with $y_t > 0 (y_t < 0)$ in the SM and induced by NP, respectively, and $N_{\text{tot}}^{\text{SM(NP)}}$ is the total number of events predicted in the SM (induced by NP).

A simplified analysis of the correlation between A_{FB}^t and A_{FB}^{ℓ} was presented in our Ref. [90] in which we assumed that A_{FB}^{ℓ} is generated entirely by new physics. In the explicit numerical predictions presented in the next section all SM contributions including the NLO QCD effects are retained.

V. A_{FB}^{ℓ} AND NEW PHYSICS MODELS: AXIGLUON AND W'

The correlation between the charged lepton asymmetry and the top-quark asymmetry is significantly different for different polarization states of the top quark, and it may therefore shed light on the nature of the physics that causes the forward-backward asymmetries at the Tevatron. In this section, as in our previous study [90], we choose the W' and axigluon models as two reference models to examine the correlation at the Tevatron and the LHC. The results we show here for the Tevatron are slightly different from our previous results because we now use parameters obtained in Sec. II from our fit to the CDF 8.7 fb^{-1} data set. In addition, we present predictions for the LHC.

The axigluon and W' models admit good fits to A_{FB}^t at the Tevatron, but they provide distinct predictions for the polarization and kinematics of the final-state top quark. The W' model produces dominantly t_{R} while the axigluon model generates an equal number of t_{R} and t_{L} with more

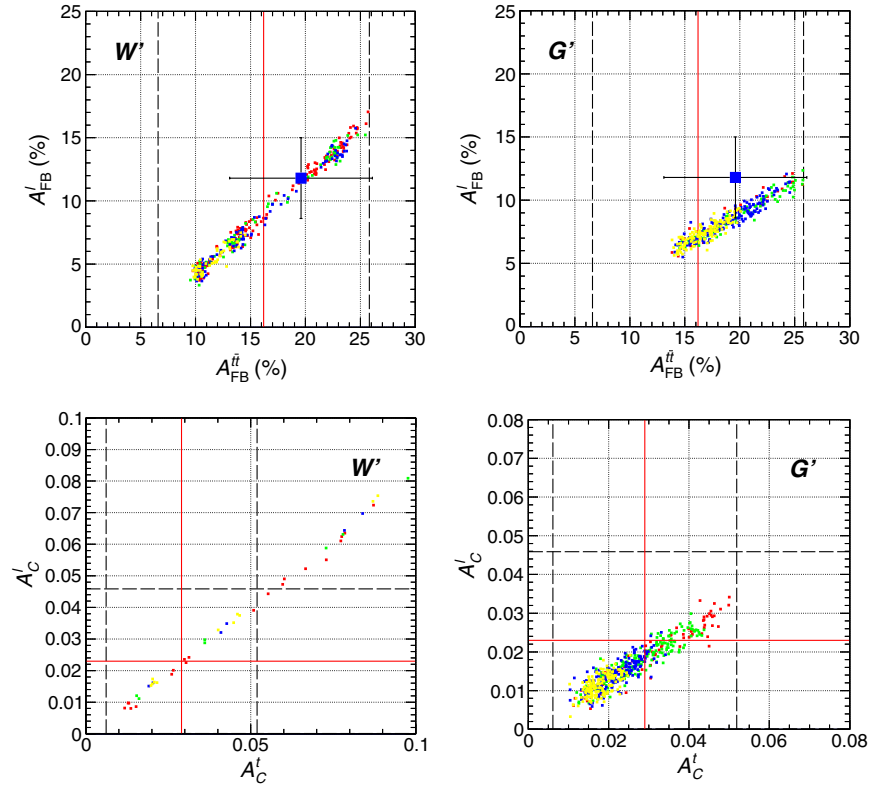


FIG. 6 (color online). Upper two panels: Correlation between A_{FB}^{ℓ} and A_{FB}^t for the W' (left) and axigluon (right) models at the Tevatron. Different colors of dots indicate different mass ranges. In the W' model, red: 100 GeV \sim 300 GeV, green: 400 GeV \sim 500 GeV, blue: 600 GeV \sim 800 GeV, yellow: >800 GeV. In the axigluon model, red: 800 GeV \sim 1300 GeV, green: 1400 GeV \sim 1700 GeV, blue: 1800 GeV \sim 2100 GeV, yellow: >2200 GeV. The (blue) square point is the D0 data $A_{\text{FB}}^{\ell} = 11.8 \pm 3.2\%$ with its 1σ uncertainty. The (red) vertical line shows A_{FB}^t measured by CDF in the 8.7 fb^{-1} data set, and the two vertical (black) dashed lines present the 1σ uncertainty band. Lower two panels: The correlation between A_C^t and A_C^{ℓ} at the LHC for the W' (left) and axigluon models (right). The vertical (horizontal) line and the two dashed lines show the central value of A_C^t (A_C^{ℓ}) and the 1σ uncertainty bands measured by ATLAS at the LHC.

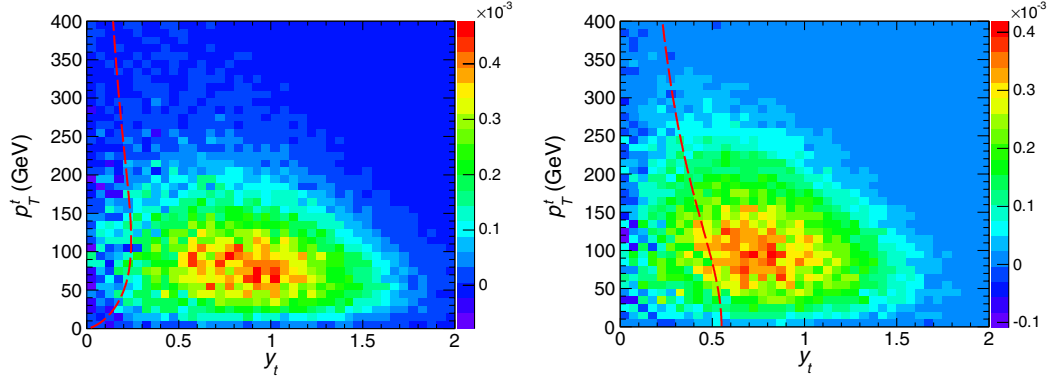


FIG. 7 (color online). Two-dimensional differential distribution, $(N^t(p_t, y_t) - N^t(p_t, -y_t))_{y_t > 0} / N_{\text{tot}}$ for (a) the W' model with $m_{W'} = 200$ GeV, and (b) the axigluon model with $m_{G'} = 1.8$ TeV. The dashed line indicates $2R_F - 1 = 0.5$ for each model, with $2R_F - 1 > 0.5 (< 0.5)$ on the right (left) side of the curve. The coupling strengths in the new physics models are chosen so that A_{FB}^t and A_{FB}^ℓ are accommodated.

energetic top quarks since the quarks come from the decay of a heavy axigluon. In Fig. 6, we show the results of our calculation of the charged lepton asymmetry using the parameters determined in our 1σ fits to the $t\bar{t}$ total cross section and the most recent CDF data on A_{FB}^t [$A_{\text{FB}}^t(m_{t\bar{t}} < 450$ GeV), $A_{\text{FB}}^t(m_{t\bar{t}} > 450$ GeV) and A_{FB}^t]. The upper two plots show the charged lepton asymmetry as a function of the top-quark asymmetry at the Tevatron. The lower two plots display the charged lepton asymmetry for the LHC together with the top-quark charge asymmetry A_C^ℓ . For the Tevatron, the values of A_{FB}^t are determined in the $t\bar{t}$ rest frame whereas, for comparison with the D0 point shown, A_{FB}^ℓ is in the laboratory frame. For the LHC predictions, both at A_C^ℓ and at A_C^t are in the same frame.

There are vertical (red) lines in Fig. 6 at $A_{\text{FB}}^t \sim 16\%$ in the Tevatron plots and at $A_C^t \sim 0.03$ in the LHC plots to show the central values of the asymmetries measured by CDF and ATLAS, respectively, and two (black) dashed lines in the upper and lower plots to show the extent of the quoted experimental 1σ uncertainty bands. The horizontal (red) line in the LHC plots shows the central value of A_C^ℓ measured by ATLAS at the LHC, and the horizontal (black) dashed lines show the 1σ uncertainty values. Since the CDF collaboration does not present the charged lepton asymmetry A_{FB}^ℓ , we show only the D0 data $A_{\text{FB}}^\ell = (11.8 \pm 3.2)\%$ as a (blue) square point.

The calculated charged lepton asymmetries stretch out over a range of values depending on the values of the axigluon or W' masses used in the fits to the Tevatron data. At the Tevatron, the charged lepton asymmetry spreads from 3% to 17% in W' the model, and over a narrower range, from 6% to 13%, in the axigluon model. The D0 data point is in agreement with both models within uncertainties. At the LHC, there are parameters in both models (obtained from the Tevatron fits) that can reproduce the values of A_C^t and A_C^ℓ measured at the LHC

by ATLAS, shown by the fact that the intersection of the vertical and horizontal (red) lines passes through the scattering of dots. On the other hand, there is a wide range of dots in the W' model that are above the central values of A_C^t and A_C^ℓ , and out of the 1σ uncertainty band. In the axigluon model, all the values of A_C^t and A_C^ℓ are consistent with ATLAS measurements within the 1σ bands. It is evident that LHC and Tevatron data together could reduce the allowed parameter spaces of the two models.

The best fits to the lines of points in Fig. 6 at the Tevatron are

$$\begin{aligned} A_{\text{FB}}^\ell &= 0.77 \times A_{\text{FB}}^t - 3.6\%(W'); \\ A_{\text{FB}}^\ell &= 0.50 \times A_{\text{FB}}^t - 1.0\%(\text{axigluon}). \end{aligned} \quad (33)$$

For the LHC, the best fits are

$$\begin{aligned} A_C^\ell &= 0.85 \times A_C^t - 0.002(W'); \\ A_C^\ell &= 0.61 \times A_C^t + 0.0008(\text{axigluon}). \end{aligned} \quad (34)$$

In order to gain greater insight into these correlations, we examine two-dimensional differential distributions of $A_{\text{FB}}^t = (N_F^t - N_B^t) / N_{\text{tot}}$ as a function of the top-quark rapidity and transverse momentum. In Fig. 7 we show these density plots for a 200 GeV W' (left) and a 1.8 TeV G' (right) at the Tevatron. Different shadings (colors) show different densities of $(N^t(p_t, y_t) - N^t(p_t, -y_t))_{y_t > 0} / N_{\text{tot}}$. The top-quark forward-backward asymmetry A_{FB}^t is obtained after integrating over the rapidity y_t and transverse momentum (p_T^t) of the top quark. As we can see, most of the events which contribute to the top-quark asymmetry concentrate in the region of p_T about 50–150 GeV (the axigluon model has more events with high p_T), and y_t about 0.4–1.2.

In Fig. 7, we also show the curve of $2R_F - 1 = 0.5$ as a red dashed curve. Events to the right (left) of the curve denote values $2R_F - 1 > (<) 0.5$. Note that $2R_F - 1$ is

the weight when we convolute with the differential A_{FB}^t to obtain the charged lepton asymmetry, cf. Eq. (27). Therefore, a larger charged lepton asymmetry is expected when there are more events to the right of the red dashed curve. In the W' model, events that contribute to A_{FB}^t are more concentrated in the region $2R_F - 1 > 0.5$ than for the axigluon model, consistent with the fact that $A_{\text{FB}}^e/A_{\text{FB}}^t$ in the W' model is larger than in the axigluon model.

The size of the top-quark asymmetry, in excess of SM expectations, is one indication that new physics may be playing a role. The charged lepton asymmetry provides a second and independent indication of the presence of new physics since it points toward the possibility that more right- than left-handed top quarks are being produced. It is important to confirm the charged lepton asymmetry. This goal could be realized with an analysis of the full data set in D0. We also encourage the CDF collaboration to measure the charged lepton asymmetry.

VI. SUMMARY AND DISCUSSION

A forward-backward asymmetry in rapidity A_{FB}^t of top quarks is observed at the Fermilab Tevatron. Its value exceeds SM expectations by $\sim 3\sigma$, perhaps indicative of the presence of new physics contributions in the top-quark sector. In this paper we expanded considerably on our previous studies of implications of the asymmetry and included new predictions for the related top-quark charge asymmetry at LHC. Starting from the CDF value of A_{FB}^t obtained in the analysis of their 8.7 fb^{-1} data set, we derived the allowed regions in parameter space of three illustrative new physics models, based, in turn, on the exchange of a flavor-changing heavy Z' or W' in the t channel, or the contribution of an axigluon G' in the s channel. The asymmetry data alone now show that the minimal Z' model is disfavored, a conclusion reinforced by the negative search by CMS for pairs of like-sign top quarks at the LHC. For the W' and G' models, we have shown that the parameter space allowed by the asymmetry data is constrained further by LHC searches for $t\bar{t}$ -plus-one-jet events and for enhancements in the dijet mass distribution, respectively. More sophisticated models can certainly be devised as extensions of the simple Z' , W' , and axigluon G' models considered here. Our conclusions are limited to the models defined in Sec. II.

Our analysis of the Tevatron data was then used to obtain predictions for A_C at the LHC. First, the association of the asymmetry A_{FB}^t with the quark-antiquark initial state allowed us, by an extrapolation in energy, to obtain an estimation of $A_C \simeq 0.1A_{\text{FB}}^t$, in agreement with the central value of the ATLAS measurement but in excess of the central value of the CMS data. Explicit calculations of A_C based on the allowed parameter space of the W' and

G' models are shown in Fig. 3 and compared with the LHC measurements by ATLAS and CMS. These calculations confirm that it is difficult to reconcile the CMS measurements of A_C with the parameters determined from fits to A_{FB}^t at the Tevatron. On the other hand, the ATLAS data are readily accommodated. The available LHC data on A_C are based on a sample with only 4.7 fb^{-1} of integrated luminosity. A reduction of the experimental uncertainties could justify stronger conclusions regarding the compatibility of the Tevatron and LHC measurements, and a combined analysis of full statistics data from both colliders would offer significant advantages.

As discussed in Sec. II, we fit Tevatron data on the inclusive total cross section for $t\bar{t}$ production and A_{FB}^t in order to determine the parameters of the new physics models under consideration, explaining the reasons why we do not include data on the differential cross section in the invariant mass $m_{t\bar{t}}$ [see, in particular, the paragraph immediately following Eq. (9) and the next-to-last paragraph of the same section]. More recent measurements of the $m_{t\bar{t}}$ distribution at the LHC by the ATLAS [110] and CMS [111,112] collaborations invite consideration of a different approach from ours, in which data from the Tevatron and the LHC are used in a joint fit to determine model parameters. The inclusion of differential data could provide further constraints on the allowed parameters of models of new physics. No excess beyond the prediction of the SM is observed in the region of large $m_{t\bar{t}}$ in the LHC data, suggesting stringent limitations on models that predict an increase in the $t\bar{t}$ rate at high $m_{t\bar{t}}$. This constraint was investigated in Refs. [14,24] where the cross section $\sigma(m_{t\bar{t}} > 1 \text{ TeV})$ was required to remain within 50% of its SM value. The Z' model is shown to be further excluded by this requirement, while the W' model is constrained with a tiny positive contribution to A_{FB}^t . For an s -channel axigluon model, our results in Sec. II show that dijet searches at the LHC exclude a narrow-width axigluon whose mass is in the range [800, 2500 GeV]. Moreover, as we mentioned, there are subtleties in the use of the $m_{t\bar{t}}$ distribution in attempts to constrain a G' with broad width.

Once statistical precision improves sufficiently at large values of $m_{t\bar{t}}$, there is no doubt that fits to the differential distribution in $m_{t\bar{t}}$ should be done. However, we caution again that a thorough analysis would require computation of the new physics contributions at NLO, include the effects of parton showering, and take into account experimental acceptance cuts whose effects are particularly significant at large values of $m_{t\bar{t}}$ (cf. Ref. [10]). The analysis in terms of new physics models is also complicated by the fact that data on the $m_{t\bar{t}}$ distribution are unfolded in terms of the SM shape and cut efficiencies. When considering models more sophisticated than those we have used here for illustrative purposes, one should bear in mind that the UV completion of the effective

model can include the introduction of new particles that affect the reliable prediction of the large-mass tail of the $m_{\bar{t}\bar{t}}$ distribution (see, for example, Refs. [16–19,21]). We readily acknowledge the value of the differential distribution in $m_{\bar{t}\bar{t}}$ for constraints on models, but we defer this study to future work.

In addition to the top-quark asymmetry, the *charged lepton* forward-backward asymmetry A_{FB}^ℓ is also measured at the Tevatron. The D0 collaboration reports $A_{\text{FB}}^\ell = (11.8 \pm 3.2)\%$, about 2.2 standard deviations above the SM value. In Sec. IV and in the Appendix, we explain the kinematic and dynamic aspects of the relationship between the asymmetries A_{FB}^ℓ and A_{FB}^t based on the $(V - A)$ spin correlation between charged leptons and different polarization states of the top quark. We have shown that A_{FB}^ℓ and A_{FB}^t are strongly positively correlated for *right-handed* top quarks. For *left-handed* top quarks, the strength of the correlation depends on how much the top quark is boosted. Since most of the $t\bar{t}$ events are produced in the threshold region, the positive values of A_{FB}^ℓ and A_{FB}^t measured at D0 indicate that more right-handed than left-handed top quarks are being produced, in contrast to the SM expectation of equal rates. This is a second manifestation of the disagreement of asymmetry data with the SM, independent of the discrepancy of the magnitude of A_{FB}^t . We hasten to remark, however, that the current uncertainties are large. The reported D0 data are based on only about half the recorded data set. Analysis of the full D0 data set is desirable, and it would be helpful to have an independent measurement of A_{FB}^ℓ from the CDF collaboration. There is great value in making measurements of both A_{FB}^t and A_{FB}^ℓ because their correlation can be related through top-quark polarization to the underlying dynamics of top-quark production.

In Sec. V, we presented predictions for the correlation of A_{FB}^ℓ with A_{FB}^t at the Tevatron, and for the charged lepton asymmetry A_C^ℓ with the top-quark asymmetry A_C^t at the LHC. These predictions are based on the allowed parameter space of the two benchmark new physics models, the W' and G' models, determined from our fit to the CDF data on A_{FB}^t . In the case of both models, the allowed parameters produce a range of values for the ratios A_C^ℓ/A_C^t at the LHC and $A_{\text{FB}}^\ell/A_{\text{FB}}^t$ at the Tevatron, aligned along approximately straight lines in plots of A_C^ℓ vs A_C^t and A_{FB}^ℓ vs A_{FB}^t . Ideally, precise data would provide a definite point in the two-dimensional plot and tightly constrain the parameter space. The two benchmark models we consider are illustrative of the spectrum of possibilities in that the axigluon model produces an equal number of right-handed and left-handed top quarks, whereas the flavor-changing W' model produces dominantly right-handed top quarks.

As a final point, we remark that the definitions of the asymmetries require a specification of the reference frame in which they are measured, whether the laboratory frame

or the $t\bar{t}$ rest frame. In this paper, we begin with A_{FB}^t in the $t\bar{t}$ rest frame since the highest statistics value of A_{FB}^t is measured by CDF in the $t\bar{t}$ rest frame at the Tevatron. On the other hand, the only Tevatron data on A_{FB}^ℓ are measured by D0 in the lab frame. To take frame dependence into account, one could begin from

$$\frac{A_{\text{FB}}^\ell(\text{lab})}{A_{\text{FB}}^t(t\bar{t})} = \frac{A_{\text{FB}}^\ell(\text{lab})}{A_{\text{FB}}^t(\text{lab})} \frac{A_{\text{FB}}^t(\text{lab})}{A_{\text{FB}}^t(t\bar{t})}. \quad (35)$$

The boost tends to reduce A_{FB}^t in the laboratory frame relative to the $t\bar{t}$ frame [38]. The reduction is about 30% for the SM, but may be different when new physics is included since the kinematics of $t\bar{t}$ change slightly. As a result, $A_{\text{FB}}^\ell(\text{lab})/A_{\text{FB}}^t(t\bar{t})$ will be smaller than $A_{\text{FB}}^\ell(\text{lab})/A_{\text{FB}}^t(\text{lab})$. Rather than apply uncertain correction factors, we used the D0 laboratory frame data on A_{FB}^ℓ , but we urge the D0 collaboration to measure their A_{FB}^t in the laboratory frame in order to have a more transparent comparison with new physics predictions. A better comparison with theoretical expectations of the correlation between the charged lepton asymmetry and top-quark asymmetry would be possible with a D0 update of A_{FB}^ℓ and A_{FB}^t in the same frame with their full data set.

ACKNOWLEDGMENTS

We thank Dr. Jiang-Hao Yu for his collaboration and contributions during the early stages of this research. The work of E. L. B., C.-R. C. and H. Z. at Argonne is supported in part by the U.S. DOE under Grant No. DE-AC02-06CH11357. H. Z. is also supported by DOE under Grant No. DE-FG02-94ER40840. Q.-H. C. is supported by the National Natural Science Foundation of China under Grant No. 11245003.

APPENDIX: ENERGY AND ANGULAR DISTRIBUTIONS OF THE CHARGED LEPTON

We present our detailed calculation of the energy and angular distributions of the charged lepton from the decay $t \rightarrow W^+ b \rightarrow b\ell^+ \nu$.

1. The charged lepton distributions

In the top-quark rest frame, the energy and angular distribution of the charged lepton ℓ^+ is

$$\frac{d\Gamma}{dx dz} = \frac{\alpha_W^2 m_t}{32\pi AB} x(1-x) \frac{1 + \lambda_t z}{2} \text{Arctan}\left[\frac{Ax}{B-x}\right], \quad (A1)$$

where $x \equiv 2E_\ell/m_t$ (E_ℓ is the energy of the charged lepton) and $z \equiv \cos\theta$. The angle θ is the angle between the direction of motion of the lepton and the top-quark spin direction, λ_t denotes the helicity of the top quark ($\lambda_t = +$ for a right-handed top quark while $\lambda_t = -$ for a left-handed top quark), $A = \Gamma_W/m_W$ and $B = m_W^2/m_t^2$. The function Arctan is defined as

$$\text{Arctan}(x) = \begin{cases} \arctan x, & x \geq 0, \\ \pi + \arctan x, & x < 0. \end{cases}$$

Taking the narrow-width approximation for the W , we have

$$\frac{d\Gamma}{dx dz} = \frac{\alpha_W^2 m_t}{32AB} x(1-x) \frac{1 + \lambda_t z}{2} \Theta(x-B), \quad (\text{A2})$$

where $\Theta(x)$ is the Heaviside step function, and $\Theta(x-B)$ ensures the top quark decays into an on-shell W boson.

Note that the energy distribution and the angular distribution are separable functions in the top-quark rest frame. This implies that, after an integration over the angular distribution, the energy distributions of the leptons are identical from left-handed and right-handed top quarks.

2. R_F along the direction of motion of a boosted top quark

We consider next a boost of the top quark along its helicity axis with a velocity β . As a result of the boost, the angular z and energy $x = 2 E_\ell/E_t$ distributions of the lepton become correlated.

The lepton momentum and angular distribution in this new frame of reference is

$$\begin{aligned} \frac{d\Gamma}{dx dz} &= \frac{\alpha_W^2 m_t}{64AB} \frac{x}{1-\beta^2} \left[1 - \frac{x}{1-\beta^2} (1-z\beta) \right] \\ &\times \left(1 + \lambda_t \frac{z-\beta}{1-z\beta} \right) \Theta \left(x - \frac{B(1-\beta^2)}{1-z\beta} \right). \end{aligned} \quad (\text{A3})$$

Since the lepton's energy spectrum cannot be negative, the upper limit of the integration over x is determined by the following condition:

$$1 - \frac{x}{1-\beta^2} (1-z\beta) \geq 0, \quad \text{i.e.} \quad x_{\max} = \frac{1-\beta^2}{1-z\beta}. \quad (\text{A4})$$

The lower limit is fixed by the Heaviside function in Eq. (A3),

$$x_{\min} = B \frac{1-\beta^2}{1-z\beta}. \quad (\text{A5})$$

Figure 8 shows the lepton distribution along the direction of motion of the top quark $\hat{z}(\vec{p}_t)$ in the boosted frame. The intercepts along the \hat{z} axis (i.e. the four black-bold points) are determined by the upper and lower limits of x stated above. Only the shaded region is allowed by kinematics, and the inner white region is excluded by the on-shell condition of the W boson. The angular distribution of the charged lepton is

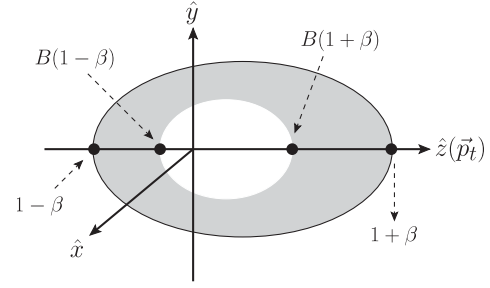


FIG. 8. Illustration of the charged lepton distribution from a boosted top quark in the laboratory frame. The top quark is moving along the \hat{z} axis. The white inner region is not allowed for an on-shell W boson. The four black-bold points along the \hat{z} axis show the limits of integration of the charged-lepton energy ratio x .

$$\begin{aligned} \frac{d\Gamma}{dz} &= \int_{x_{\min}}^{x_{\max}} \frac{d\Gamma}{dz dx} dx \\ &= \frac{\alpha_W^2 m_t (1-B)^2 (1+2B) (1-\beta^2) [1-z\beta + \lambda_t(z-\beta)]}{384AB(1-z\beta)^3}, \end{aligned} \quad (\text{A6})$$

from which we obtain the normalized angular distribution,

$$\frac{1}{\Gamma} \frac{d\Gamma}{dz} = \frac{(1-\beta^2) [1-z\beta + \lambda_t(z-\beta)]}{2(1-z\beta)^3}. \quad (\text{A7})$$

Along the direction of motion of the top quark, the charged lepton is in the forward region with $z = \cos \theta > 0$ and in the backward region with $z = \cos \theta < 0$. The partial width of the charged lepton in the forward region is

$$\begin{aligned} \Gamma_F &= \int_0^1 \frac{d\Gamma}{dz} dz \\ &= \frac{\alpha_W^2 m_t}{384AB} (1-3B^2+2B^3)(1+\beta) \left[1 + \frac{\lambda_t}{2}(1-\beta) \right], \end{aligned} \quad (\text{A8})$$

and the partial width of the charged lepton in the backward region is

$$\begin{aligned} \Gamma_B &= \int_{-1}^0 \frac{d\Gamma}{dz} dz \\ &= \frac{\alpha_W^2 m_t}{384AB} (1-3B^2+2B^3)(1-\beta) \left[1 - \frac{\lambda_t}{2}(1+\beta) \right]. \end{aligned} \quad (\text{A9})$$

The forward fraction ratio R_F is

$$R_F = \frac{\Gamma_F}{\Gamma_F + \Gamma_B} = \frac{1+\beta}{4} [2 + \lambda_t(1-\beta)]. \quad (\text{A10})$$

Since $\beta \leq 1$, R_F for a right-handed top quark is always larger than 75%. On the other hand, for left-handed top quarks, the leptons tend to move opposite the direction of the boost in the top-quark rest frame. Owing to this

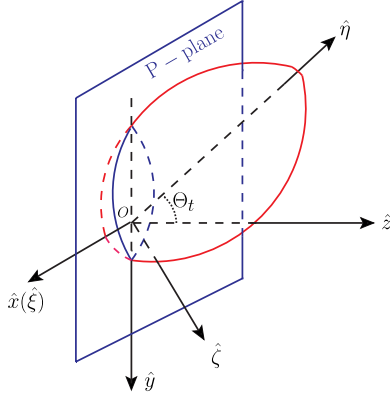


FIG. 9 (color online). Illustration of the charged lepton distribution from a boosted top quark in the laboratory frame. The capital X, Y, Z axes denote the laboratory frame, with the Z axis being the direction of the beam line. The top quark is boosted along the η axis.

antiboost effect, there is a critical point of $R_F = 50\%$ for a left-handed top quark. The critical point occurs at $\beta = \sqrt{2} - 1 \approx 0.414$, i.e. $E_t \approx 191.5$ GeV.

3. R_F in the laboratory frame

The direction of motion of a top quark does not generally coincide with the beam direction, and, therefore, the ratio R_F derived in the previous section does not describe the probability of finding a charged lepton in the forward region of the detector. In this section we generalize R_F to the situation in which the top-quark kinematics in the laboratory frame are described by its velocity β and rapidity y_t , or equivalently, by its transverse momentum p_T and rapidity y_t . To obtain R_F , we will rotate the lepton momentum and angular distribution in Eq. (A3) to the laboratory frame and then integrate over the forward hemisphere in this laboratory frame.

Figure 9 illustrates the charged lepton distribution in the laboratory frame whose axes are labeled $(\hat{X}, \hat{Y}, \hat{Z})$. The top-quark boost is along its helicity axis $\hat{\eta}$. The calculation of the decay distribution of the lepton can be carried out in the new frame $(\hat{\xi}, \hat{\zeta}, \hat{\eta})$. The angle between $\hat{\eta}$ and \hat{Z} is denoted Θ , with $k \equiv -\tan \Theta$. For simplicity we require one common transverse direction for the two frames, \hat{X} and $\hat{\xi}$. The important point to make is that the transverse plane P ($\hat{X} - \hat{Y}$), which separates the forward ($Z > 0$) and backward ($Z < 0$) regions in the laboratory, is not perpendicular to the direction of motion of the top quark. Our task is to calculate the fraction of the charged leptons that fall in the forward region $Z > 0$.

The major semi-axis of the decay ellipsoid is the η -axis direction, with focus at the origin of the two coordinate systems, the top-quark decay coordinate frame and the laboratory frame. The ξ axis lies in the transverse plane P , and the relationship of the values of η and ζ for points in this plane is given by the equation

of the line obtained by projecting the η and ζ axes onto plane P ,

$$\eta = k\zeta, \quad k < 0. \quad (\text{A11})$$

We introduce polar coordinates,

$$\xi = \sin \theta \cos \phi, \quad \zeta = \sin \theta \sin \phi, \quad \eta = \cos \theta, \quad (\text{A12})$$

where θ is the polar angle, and ϕ is the azimuthal angle in the frame $(\hat{\xi}, \hat{\zeta}, \hat{\eta})$. Throughout this work we choose the convention that the ϕ angle is in the region $[0, 2\pi)$, which means $0 \leq \phi < 2\pi$. In terms of these polar coordinates, the equation relating points in the plane P becomes

$$\cot \theta = k \sin \phi. \quad (\text{A13})$$

Consider the case of a top quark with positive rapidity ($k \leq 0$, i.e. $y_t \geq 0$). Charged leptons on the right (left) of the P plane are in the forward (backward) region in the laboratory. Their momenta satisfy the conditions $\eta > k\zeta$ ($\eta < k\zeta$), respectively. In the polar coordinates, the conditions become

$$\text{forward region: } \sin \phi > \frac{\cot \theta}{k}, \quad (\text{A14})$$

$$\text{backward region: } \sin \phi < \frac{\cot \theta}{k}.$$

These two inequalities then specify the region of integration over the θ and ϕ angles as follows:

- (i) $\cot \theta/k \leq -1$: the condition $\sin \phi > \cot \theta/k$ is always valid. Therefore, the charged lepton is always in the forward region. The integration regions are $\theta \leq \text{arccot}(-k)$ and $\phi \in (0, 2\pi)$.
- (ii) $\cot \theta/k \geq 1$ [i.e. $\theta \geq \text{arccot}(k)$]: there is no solution because no ϕ can satisfy $\sin \phi \geq \cot \theta/k \geq 1$.
- (iii) $-1 < \cot \theta/k < 1$: When $\theta > \pi/2$,

$$\phi \in \left(\arcsin\left(\frac{\cot \theta}{k}\right), \pi - \arcsin\left(\frac{\cot \theta}{k}\right) \right), \quad (\text{A15})$$

and for $\theta \leq \pi/2$,

$$\begin{aligned} \phi \in & \left[0, \pi - \arcsin\left(\frac{\cot \theta}{k}\right) \right) \\ & \cup \left(2\pi + \arcsin\left(\frac{\cot \theta}{k}\right), 2\pi \right). \end{aligned} \quad (\text{A16})$$

We summarize the integration regions in Table I.

The lepton spectrum from the decay of the top quark is

$$\begin{aligned} \frac{d\Gamma}{dx dz d\phi} = & \frac{\alpha_W^2 m_t}{128\pi AB} \frac{x}{1-\beta^2} \left[1 - \frac{x(1-z\beta)}{1-\beta^2} \right] \\ & \times \left(1 + \lambda_r \frac{z-\beta}{1-z\beta} \right) \Theta \left(x - \frac{B(1-\beta^2)}{1-z\beta} \right). \end{aligned} \quad (\text{A17})$$

The partial width for a lepton in the forward region is

TABLE I. The integration regions of the θ and ϕ angles. Note $k < 0$ by definition.

	$\cos \theta$	ϕ
Part I	$\left(-\frac{k}{\sqrt{1+k^2}}, 1\right)$	$(0, 2\pi)$
Part II	$\left(0, -\frac{k}{\sqrt{1+k^2}}\right)$	$[0, \pi - \arcsin(\frac{\cot \theta}{k})] \cup (2\pi + \arcsin(\frac{\cot \theta}{k}), 2\pi)$
Part III	$\left(\frac{k}{\sqrt{1+k^2}}, 0\right)$	$(\arcsin(\frac{\cot \theta}{k}), \pi - \arcsin(\frac{\cot \theta}{k}))$
Part IV	$\left(-1, \frac{k}{\sqrt{1+k^2}}\right)$	\emptyset

$$\begin{aligned}
 \Gamma_F &= \int_{-1}^1 dz \int_{\frac{B(1-\beta^2)}{1-z\beta}}^{\frac{(1-\beta^2)}{1-z\beta}} dx \int_{\phi_{\min}}^{\phi_{\max}} \frac{d\Gamma}{dx dz d\phi} d\phi \\
 &= \int_{-\frac{k}{\sqrt{1+k^2}}}^1 dz \int_{\frac{B(1-\beta^2)}{1-z\beta}}^{\frac{(1-\beta^2)}{1-z\beta}} dx \frac{2\pi d\Gamma}{dx dz d\phi} + \int_{\frac{k}{\sqrt{1+k^2}}}^{-\frac{k}{\sqrt{1+k^2}}} dz \int_{\frac{B(1-\beta^2)}{1-z\beta}}^{\frac{(1-\beta^2)}{1-z\beta}} dx \frac{d\Gamma}{dx dz d\phi} \left[\pi - 2 \arcsin\left(\frac{z}{k\sqrt{1-z^2}}\right) \right] \\
 &= \underbrace{\int_{-\frac{k}{\sqrt{1+k^2}}}^1 dz \frac{d\Gamma}{dz}}_{\Gamma_F^{(A)}} + \underbrace{\int_{\frac{k}{\sqrt{1+k^2}}}^{-\frac{k}{\sqrt{1+k^2}}} dz \frac{d\Gamma}{2\pi dz} \left[\pi - 2 \arcsin\left(\frac{z}{k\sqrt{1-z^2}}\right) \right]}_{\Gamma_F^{(B)}}. \tag{A18}
 \end{aligned}$$

The values of ϕ_{\min} and ϕ_{\max} are listed in Table I, and $\Gamma_F^{(A)}$ is

$$\frac{\Gamma_F^{(A)}}{\Gamma} = \frac{(1+\beta)}{4(\sqrt{1+k^2} + k\beta)^2} \times \{\lambda_t(1-\beta) + 2[1+k^2(1+\beta) + k\sqrt{1+k^2}(1+\beta)]\}. \tag{A19}$$

The calculation of $\Gamma_F^{(B)}$ involves more steps. After integrating over x , we obtain

$$\begin{aligned}
 \frac{\Gamma_F^{(B)}}{\Gamma} &= \int_{\frac{k}{\sqrt{1+k^2}}}^{-\frac{k}{\sqrt{1+k^2}}} dz \left[\pi - 2 \arcsin\left(\frac{z}{k\sqrt{1-z^2}}\right) \right] \frac{(1-\beta^2)}{4\pi(1-z\beta)^3} [1 - \lambda_t\beta + (\lambda_t - \beta)z] \\
 &= \int_{-1}^1 dt \underbrace{\left[-1 + \frac{k\beta t}{\sqrt{1+k^2 t^2}} - \lambda_t \left(\frac{kt}{\sqrt{1+k^2 t^2}} - \beta \right) \right]}_{f(t)} \times \frac{k(1-\beta^2)(\pi - 2 \arcsin t)}{4\pi(\sqrt{1+k^2 t^2} - k\beta t)^3}, \tag{A20}
 \end{aligned}$$

where we change the integration variable z to $t = z/(k\sqrt{1-z^2})$ in the second step. The integration can be done analytically, but special care is needed at the upper and lower limits where the integral is not analytically continuous. We approach the upper bound from the left and the lower limit from the right, obtaining

$$\begin{aligned}
 \lim_{t \rightarrow 1^-} \int f(t) dt &= \frac{\beta}{4\sqrt{1+k^2(1-\beta^2)}} + \frac{\lambda_t(1+k^2)(1-\beta^2)}{8[1+k^2(1-\beta^2)]^{3/2}} - \frac{i}{2\pi} \ln(k\sqrt{1+k^2}), \\
 \lim_{t \rightarrow (-1)^+} \int f(t) dt &= -\frac{\beta}{4\sqrt{1+k^2(1-\beta^2)}} + \frac{k\sqrt{1+k^2}(1-\beta^2) + \beta}{2[1+k^2(1-\beta^2)]} - \frac{\lambda_t(1+k^2)(1-\beta^2)}{8[1+k^2(1-\beta^2)]^{3/2}} + \frac{\lambda_t(1-\beta^2)}{4(\sqrt{1+k^2} + k\beta)^2} \\
 &\quad - \frac{i}{2\pi} \ln(k\sqrt{1+k^2}). \tag{A21}
 \end{aligned}$$

Hence, $\Gamma_F^{(B)}/\Gamma$ is

$$\frac{\Gamma_F^{(B)}}{\Gamma} = \frac{\beta}{2\sqrt{1+k^2(1-\beta^2)}} + \frac{\lambda_t(1+k^2)(1-\beta^2)}{4[1+k^2(1-\beta^2)]^{3/2}} - \frac{k\sqrt{1+k^2}(1-\beta^2) + \beta}{2[1+k^2(1-\beta^2)]} - \frac{\lambda_t(1-\beta^2)}{4(\sqrt{1+k^2} + k\beta)^2}. \tag{A22}$$

Finally, for a top quark in the forward region, i.e. $k \leq 0$ or $y_t \geq 0$, the fraction of leptons in the forward region is

$$R_F \equiv \frac{\Gamma_F}{\Gamma} = \frac{1}{2} + \frac{\beta}{2\sqrt{1+k^2} - k^2\beta^2} + \frac{\lambda_t(1+k^2)(1-\beta^2)}{4(1+k^2 - k^2\beta^2)^{3/2}}. \tag{A23}$$

For a top quark in the backward region the result is $1 - R_F$ (choosing the opposite k).

We may use $k^2 = \tan^2 \Theta_t = -1 + \beta^2 \coth^2 y_t$ to make the connection to the top quark rapidity more apparent,

$$R_F^{\lambda_t}(\beta, y_t) = \begin{cases} \frac{1}{2} + \frac{1}{2(1+\gamma^{-2}\coth^2 y_t)^{1/2}} + \frac{\lambda_t \coth^2 y_t}{4\beta\gamma^2(1+\gamma^{-2}\coth^2 y_t)^{3/2}}, & y_t \geq 0, \\ \frac{1}{2} - \frac{1}{2(1+\gamma^{-2}\coth^2 y_t)^{1/2}} - \frac{\lambda_t \coth^2 y_t}{4\beta\gamma^2(1+\gamma^{-2}\coth^2 y_t)^{3/2}}, & y_t < 0. \end{cases} \quad (\text{A24})$$

One could also choose p_T (the transverse momentum of the top quark) and y_t as the independent kinematic variables. Using the kinematic relations

$$k = -\frac{p_T \text{csch} y_t}{\sqrt{m_t^2 + p_T^2}}, \quad \beta = \sqrt{1 - \frac{m_t^2}{m_t^2 + p_T^2} \text{sech}^2 y_t} \quad (\text{A25})$$

one can rewrite R_F as

$$R_F^{\lambda_t}(p_T, y_t) = \begin{cases} \frac{1}{2} + \frac{1}{2} \left(1 + \frac{m_t^2 \text{csch}^2 y_t}{m_t^2 + p_T^2}\right)^{-1/2} + \frac{\lambda_t}{4} \left(\frac{m_t^2 \text{csch}^2 y_t}{m_t^2 + p_T^2}\right) \left(1 + \frac{m_t^2 \text{csch}^2 y_t}{m_t^2 + p_T^2}\right)^{-3/2} \left(1 - \frac{m_t^2 \text{sech}^2 y_t}{m_t^2 + p_T^2}\right)^{-1/2}, & y_t \geq 0, \\ \frac{1}{2} - \frac{1}{2} \left(1 + \frac{m_t^2 \text{csch}^2 y_t}{m_t^2 + p_T^2}\right)^{-1/2} - \frac{\lambda_t}{4} \left(\frac{m_t^2 \text{csch}^2 y_t}{m_t^2 + p_T^2}\right) \left(1 + \frac{m_t^2 \text{csch}^2 y_t}{m_t^2 + p_T^2}\right)^{-3/2} \left(1 - \frac{m_t^2 \text{sech}^2 y_t}{m_t^2 + p_T^2}\right)^{-1/2}, & y_t < 0. \end{cases}$$

4. Critical behavior of R_F

A few interesting features of the ratio R_F are worthy of note. For left-handed top quarks, when p_T is not large, peak structure is present in $R_F^{\lambda_t}(p_T, y_t)$, and there is more than one value of y_t which satisfies the equation $R_F^{\lambda_t}(\beta, y_t) = 0.5$.

In principle, a peak position can be obtained by solving the equation

$$\frac{\partial R_F^{\lambda_t}(p_T, y_t)}{\partial y_t} = 0. \quad (\text{A26})$$

The derivative is not amenable to an analytic solution, but we can still determine the critical value of p_T^c . When $p_T > p_T^c$, there is no peak structure in $R_F^{\lambda_t}(p_T, y_t)$. When $p_T < p_T^c$, $R_F^{\lambda_t}(p_T, y_t)$ shows peak structure for left-handed top quarks. Solving

$$\left. \frac{\partial R_F^{\lambda_t}(p_T^c, y_t)}{\partial y_t} \right|_{y_t=0} = 0 \quad (\text{A27})$$

to obtain p_T^c , we find

$$\frac{m_t^2 + (p_T^c)^2 - 2p_T^c \sqrt{m_t^2 + (p_T^c)^2}}{4m_t p_T^c} = 0. \quad (\text{A28})$$

The only physical solution is $p_T^c = m_t/\sqrt{3} \approx 100$ GeV.

For left-handed top quarks, there are values of the boost for which the equation $R_F^{\lambda_t}(\beta, y_t) = 0.5$ has more than one solution. In this interval of β , $R_F^{\lambda_t}(\beta, y_t)$ is not far from 0.5 and is nearly constant. The solution of $R_F^{\lambda_t}(\beta, y_t) = 0.5$ is $\coth^2 y_t = -\gamma^2(1 + \frac{\lambda_t}{2\beta})^{-1}$. Because $k^2 = -1 + \beta^2 \coth^2 y_t$ should be greater than 0, we require $\coth^2 y_t \geq 1/\beta^2$. In the region $\beta \in (\sqrt{2} - 1, \frac{1}{2})$ we find that $R_F^{\lambda_t}(\beta, y_t)$ is nearly constant for left-handed top quarks. The corresponding values of the energy of the top quark are $E_t \in (191.5 \text{ GeV}, 201.3 \text{ GeV})$.

-
- | | |
|---|--|
| <p>[1] T. Aaltonen <i>et al.</i> (CDF Collaboration), <i>Phys. Rev. D</i> 83, 112003 (2011).</p> <p>[2] V. M. Abazov <i>et al.</i> (D0 Collaboration), <i>Phys. Rev. D</i> 84, 112005 (2011).</p> <p>[3] S. Jung, H. Murayama, A. Pierce, and J. D. Wells, <i>Phys. Rev. D</i> 81, 015004 (2010).</p> <p>[4] J. Cao, Z. Heng, L. Wu, and J. M. Yang, <i>Phys. Rev. D</i> 81, 014016 (2010).</p> <p>[5] B. Xiao, Y.-k. Wang, and S.-h. Zhu, <i>Phys. Rev. D</i> 82, 034026 (2010).</p> <p>[6] J. Cao, L. Wang, L. Wu, and J. M. Yang, <i>Phys. Rev. D</i> 84, 074001 (2011).</p> | <p>[7] E. L. Berger, Q.-H. Cao, C.-R. Chen, C. S. Li, and H. Zhang, <i>Phys. Rev. Lett.</i> 106, 201801 (2011).</p> <p>[8] Z.-q. Zhou, B. Xiao, Y.-k. Wang, and S.-h. Zhu, <i>Phys. Rev. D</i> 83, 094022 (2011).</p> <p>[9] J. Aguilar-Saavedra and M. Perez-Victoria, <i>J. High Energy Phys.</i> 05 (2011) 034.</p> <p>[10] M. I. Gresham, I.-W. Kim, and K. M. Zurek, <i>Phys. Rev. D</i> 83, 114027 (2011).</p> <p>[11] J. Aguilar-Saavedra and M. Perez-Victoria, <i>Phys. Lett. B</i> 701, 93 (2011).</p> <p>[12] J. Aguilar-Saavedra and M. Perez-Victoria, <i>Phys. Rev. D</i> 84, 115013 (2011).</p> |
|---|--|

- [13] M. Duraisamy, A. Rashed, and A. Datta, *Phys. Rev. D* **84**, 054018 (2011).
- [14] J. Aguilar-Saavedra and M. Perez-Victoria, *J. High Energy Phys.* **09** (2011) 097.
- [15] M. I. Gresham, I.-W. Kim, and K. M. Zurek, *Phys. Rev. D* **85**, 014022 (2012).
- [16] P. Ko, Y. Omura, and C. Yu, *Phys. Rev. D* **85**, 115010 (2012).
- [17] P. Ko, Y. Omura, and C. Yu, *J. High Energy Phys.* **01** (2012) 147.
- [18] P. Ko, Y. Omura, and C. Yu, *Nuovo Cimento Soc. Ital. Fis. C* **035N3C**, 245 (2012).
- [19] P. Ko, Y. Omura, and C. Yu, *Eur. Phys. J. C* **73**, 2269 (2013).
- [20] B. H. Li, C. S. Li, H. T. Li, Y. C. Zhan, Y. Zhang, and J. Wang, *Phys. Rev. D* **86**, 114027 (2012).
- [21] P. Ko, Y. Omura, and C. Yu, [arXiv:1208.4675](https://arxiv.org/abs/1208.4675).
- [22] E. Alvarez and E. C. Leskow, *Phys. Rev. D* **86**, 114034 (2012).
- [23] J. Drobnak, A. L. Kagan, J. F. Kamenik, G. Perez, and J. Zupan, *Phys. Rev. D* **86**, 094040 (2012).
- [24] J. Aguilar-Saavedra and M. Perez-Victoria, [arXiv:1302.6618](https://arxiv.org/abs/1302.6618).
- [25] K. Cheung, W.-Y. Keung, and T.-C. Yuan, *Phys. Lett. B* **682**, 287 (2009).
- [26] V. Barger, W.-Y. Keung, and C.-T. Yu, *Phys. Rev. D* **81**, 113009 (2010).
- [27] K. Cheung and T.-C. Yuan, *Phys. Rev. D* **83**, 074006 (2011).
- [28] V. Barger, W.-Y. Keung, and C.-T. Yu, *Phys. Lett. B* **698**, 243 (2011).
- [29] B. Bhattacharjee, S. S. Biswal, and D. Ghosh, *Phys. Rev. D* **83**, 091501 (2011).
- [30] N. Craig, C. Kilic, and M. J. Strassler, *Phys. Rev. D* **84**, 035012 (2011).
- [31] C.-H. Chen, S. S. Law, and R.-H. Li, *J. Phys. G* **38**, 115008 (2011).
- [32] J. Cao, K. Hikasa, L. Wang, L. Wu, and J. M. Yang, *Phys. Rev. D* **85**, 014025 (2012).
- [33] K. Yan, J. Wang, D. Y. Shao, and C. S. Li, *Phys. Rev. D* **85**, 034020 (2012).
- [34] S. Knapen, Y. Zhao, and M. J. Strassler, *Phys. Rev. D* **86**, 014013 (2012).
- [35] D. Duffy, Z. Sullivan, and H. Zhang, *Phys. Rev. D* **85**, 094027 (2012).
- [36] J. Adelman, J. Ferrando, and C. White, *J. High Energy Phys.* **02** (2013) 091.
- [37] M. Endo and S. Iwamoto, *Phys. Lett. B* **718**, 1070 (2013).
- [38] O. Antunano, J. H. Kuhn, and G. Rodrigo, *Phys. Rev. D* **77**, 014003 (2008).
- [39] P. Ferrario and G. Rodrigo, *Phys. Rev. D* **78**, 094018 (2008).
- [40] P. Ferrario and G. Rodrigo, *Phys. Rev. D* **80**, 051701 (2009).
- [41] P. Ferrario and G. Rodrigo, *J. Phys. Conf. Ser.* **171**, 012091 (2009).
- [42] P. H. Frampton, J. Shu, and K. Wang, *Phys. Lett. B* **683**, 294 (2010).
- [43] Q.-H. Cao, D. McKeen, J. L. Rosner, G. Shaughnessy, and C. E. Wagner, *Phys. Rev. D* **81**, 114004 (2010).
- [44] R. S. Chivukula, E. H. Simmons, and C.-P. Yuan, *Phys. Rev. D* **82**, 094009 (2010).
- [45] B. Xiao, Y.-k. Wang, and S.-h. Zhu, [arXiv:1011.0152](https://arxiv.org/abs/1011.0152).
- [46] Y. Bai, J. L. Hewett, J. Kaplan, and T. G. Rizzo, *J. High Energy Phys.* **03** (2011) 003.
- [47] X.-P. Wang, Y.-K. Wang, B. Xiao, J. Xu, and S.-h. Zhu, *Phys. Rev. D* **83**, 115010 (2011).
- [48] G. Marques Tavares and M. Schmaltz, *Phys. Rev. D* **84**, 054008 (2011).
- [49] E. Alvarez, L. Da Rold, J. I. S. Vietto, and A. Szykman, *J. High Energy Phys.* **09** (2011) 007.
- [50] J. Aguilar-Saavedra and M. Perez-Victoria, *Phys. Lett. B* **705**, 228 (2011).
- [51] H. Wang, Y.-k. Wang, B. Xiao, and S.-h. Zhu, *Phys. Rev. D* **84**, 094019 (2011).
- [52] G. Z. Krnjaic, *Phys. Rev. D* **85**, 014030 (2012).
- [53] J. Aguilar-Saavedra and J. Santiago, *Phys. Rev. D* **85**, 034021 (2012).
- [54] E. Gabrielli, M. Raidal, and A. Racioppi, *Phys. Rev. D* **85**, 074021 (2012).
- [55] H. X. Zhu, C. S. Li, D. Y. Shao, J. Wang, and C. Yuan, *Eur. Phys. J. C* **72**, 2232 (2012).
- [56] M. Cvetič, J. Halverson, and P. Langacker, *J. High Energy Phys.* **11** (2012) 064.
- [57] S. Dutta, A. Goyal, and M. Kumar, *Phys. Rev. D* **87**, 094016 (2013).
- [58] C. Gross, G. M. Tavares, C. Spethmann, and M. Schmaltz, *Phys. Rev. D* **87**, 014004 (2013).
- [59] M. Gresham, J. Shelton, and K. M. Zurek, *J. High Energy Phys.* **03** (2013) 008.
- [60] A. Djouadi, G. Moreau, F. Richard, and R. K. Singh, *Phys. Rev. D* **82**, 071702 (2010).
- [61] J. Shu, T. M. Tait, and K. Wang, *Phys. Rev. D* **81**, 034012 (2010).
- [62] A. Arhrib, R. Benbrik, and C.-H. Chen, *Phys. Rev. D* **82**, 034034 (2010).
- [63] I. Dorsner, S. Fajfer, J. F. Kamenik, and N. Kosnik, *Phys. Rev. D* **81**, 055009 (2010).
- [64] M. Bauer, F. Goertz, U. Haisch, T. Pfoh, and S. Westhoff, *J. High Energy Phys.* **11** (2010) 039.
- [65] C.-H. Chen, G. Cvetič, and C. Kim, *Phys. Lett. B* **694**, 393 (2011).
- [66] E. Alvarez, L. Da Rold, and A. Szykman, *J. High Energy Phys.* **05** (2011) 070.
- [67] K. M. Patel and P. Sharma, *J. High Energy Phys.* **04** (2011) 085.
- [68] A. R. Zerwekh, *Phys. Lett. B* **704**, 62 (2011).
- [69] E. R. Barreto, Y. Coutinho, and J. Sa Borges, *Phys. Rev. D* **83**, 054006 (2011).
- [70] R. Foot, *Phys. Rev. D* **83**, 114013 (2011).
- [71] S. Jung, A. Pierce, and J. D. Wells, *Phys. Rev. D* **83**, 114039 (2011).
- [72] S. Jung, A. Pierce, and J. D. Wells, *Phys. Rev. D* **84**, 055018 (2011).
- [73] K. Babu, M. Frank, and S. K. Rai, *Phys. Rev. Lett.* **107**, 061802 (2011).
- [74] A. Djouadi, G. Moreau, and F. Richard, *Phys. Lett. B* **701**, 458 (2011).
- [75] A. Hektor, G. Hutsi, M. Kadastik, K. Kannike, M. Raidal, and D. M. Straub, *Phys. Rev. D* **84**, 031701 (2011).

- [76] Y. Cui, Z. Han, and M. D. Schwartz, *J. High Energy Phys.* **07** (2011) 127.
- [77] M. Frank, A. Hayreter, and I. Turan, *Phys. Rev. D* **84**, 114007 (2011).
- [78] H. Davoudiasl, T. McElmurry, and A. Soni, *Phys. Rev. D* **85**, 054001 (2012).
- [79] S. Jung, A. Pierce, and J.D. Wells, *Phys. Rev. D* **84**, 091502 (2011).
- [80] N. Kosnik, I. Dorsner, J. Drobnak, S. Fajfer, and J.F. Kamenik, Proc. Sci., EPS-HEP2011 (2011) 380.
- [81] A. de la Puente, *J. High Energy Phys.* **02** (2012) 016.
- [82] L. Wang, L. Wu, and J.M. Yang, *Phys. Rev. D* **85**, 075017 (2012).
- [83] J. Drobnak, J.F. Kamenik, and J. Zupan, *Phys. Rev. D* **86**, 054022 (2012).
- [84] S. Chatrchyan *et al.* (CMS Collaboration), *Phys. Lett. B* **717**, 351 (2012).
- [85] G. Aad *et al.* (ATLAS Collaboration), *J. High Energy Phys.* **04** (2012) 069.
- [86] S. Chatrchyan *et al.* (CMS Collaboration), *J. High Energy Phys.* **08** (2012) 110.
- [87] E.L. Berger, Q.-H. Cao, J.-H. Yu, and H. Zhang, *Phys. Rev. Lett.* **109**, 152004 (2012).
- [88] V.M. Abazov *et al.* (D0 Collaboration), *Phys. Rev. D* **87**, 011103 (2013).
- [89] W. Bernreuther and Z.-G. Si, *Nucl. Phys.* **B837**, 90 (2010).
- [90] E.L. Berger, Q.-H. Cao, C.-R. Chen, J.-H. Yu, and H. Zhang, *Phys. Rev. Lett.* **108**, 072002 (2012).
- [91] D. Krohn, T. Liu, J. Shelton, and L.-T. Wang, *Phys. Rev. D* **84**, 074034 (2011).
- [92] A. Falkowski, G. Perez, and M. Schmaltz, *Phys. Rev. D* **87**, 034041 (2013).
- [93] W. Bernreuther and Z.-G. Si, *Phys. Rev. D* **86**, 034026 (2012).
- [94] J.H. Kuhn and G. Rodrigo, *Phys. Rev. Lett.* **81**, 49 (1998).
- [95] J.H. Kuhn and G. Rodrigo, *J. High Energy Phys.* **01** (2012) 063.
- [96] T. Aaltonen *et al.* (CDF Collaboration), CDF Conference Note 10807, 2012.
- [97] T. Aaltonen *et al.* (CDF Collaboration), CDF Conference Note 9913, 2009.
- [98] J. Campbell, K. Ellis, and C. Williams, <http://mcfm.fnal.gov/>.
- [99] J. Alwall, M. Herquet, F. Maltoni, O. Mattelaer, and T. Stelzer, *J. High Energy Phys.* **06** (2011) 128.
- [100] G. Aad *et al.* (ATLAS Collaboration), *Phys. Rev. D* **86**, 091103 (2012).
- [101] G. Aad *et al.* (ATLAS Collaboration), *New J. Phys.* **13**, 053044 (2011).
- [102] G. Aad *et al.* (ATLAS Collaboration), *Phys. Lett. B* **708**, 37 (2012).
- [103] G. Aad *et al.* (ATLAS Collaboration), Report No. ATLAS-CONF-2012-088, 2012.
- [104] G. Aad *et al.* (ATLAS Collaboration), Report No. ATLAS-CONF-2012-148, 2012.
- [105] G. Aad *et al.* (ATLAS Collaboration), Report No. ATLAS-CONF-2012-057, 2012.
- [106] S. Chatrchyan *et al.* (CMS Collaboration), Report No. CMS-PAS-TOP-11-030, 2012.
- [107] A. Martin, W. Stirling, R. Thorne, and G. Watt, *Eur. Phys. J. C* **63**, 189 (2009).
- [108] G. Aad *et al.* (ATLAS Collaboration), <https://twiki.cern.ch/twiki/pub/AtlasPublic/CombinedSummaryPlots/>.
- [109] G. Mahlon and S.J. Parke, *Phys. Rev. D* **81**, 074024 (2010).
- [110] G. Aad *et al.* (ATLAS Collaboration), Report No. ATLAS-CONF-2013-052, 2013.
- [111] S. Chatrchyan *et al.* (CMS Collaboration), Report No. CMS-PAS-TOP-12-027, 2013.
- [112] S. Chatrchyan *et al.* (CMS Collaboration), Report No. CMS-PAS-TOP-12-028, 2013.