

Spacetime splitting, admissible coordinates, and causality

D. Bini

Istituto per le Applicazioni del Calcolo “M. Picone,” CNR, I-00185 Rome, Italy; ICRA, University of Rome “La Sapienza,” I-00185 Rome, Italy; INFN, Sezione di Firenze, I-00185 Sesto Fiorentino (FI), Italy

C. Chicone

Department of Mathematics and Department of Physics and Astronomy, University of Missouri, Columbia, Missouri 65211, USA

B. Mashhoon

Department of Physics and Astronomy, University of Missouri, Columbia, Missouri 65211, USA

(Received 15 March 2012; published 9 May 2012)

To confront relativity theory with observation, it is necessary to split spacetime into its temporal and spatial components. The $(1 + 3)$ timelike threading approach involves restrictions on the gravitational potentials $(g_{\mu\nu})$, while the $(3 + 1)$ spacelike slicing approach involves restrictions on $(g^{\mu\nu})$. These latter coordinate conditions protect chronology within any such coordinate patch. While the threading coordinate conditions can be naturally integrated into the structure of Lorentzian geometry and constitute the standard coordinate conditions in general relativity, this circumstance does not extend to the slicing coordinate conditions. We explore the influence of chronology violation on wave motion. In particular, we consider the propagation of radiation parallel to the rotation axis of stationary Gödel-type universes characterized by parameters $\eta > 0$ and $\lambda > 0$ such that for $\eta < 1$ ($\eta > 1$) chronology is protected (violated). We show that in the WKB approximation such waves can freely propagate only when chronology is protected.

DOI: 10.1103/PhysRevD.85.104020

PACS numbers: 04.20.Cv

I. INTRODUCTION

Though space and time refer to essentially different aspects of our experience, their unification in the theory of relativity has been a distinct achievement. To interpret observations in accordance with this theory, however, we need to split spacetime into its components [1]. Observers are macrophysical entities; therefore, their associated temporal coordinate is thermodynamic time derived from the concept of entropy. This leads to the arrow of time, its one-way property that has no analog in space. In principle, classical gravity can change this one-way character of time and produce a closed timelike curve (CTC). That is, such a possibility is not ruled out by the geometric structure of classical general relativity. In this paper, we approach the gravitational violation of chronology from the viewpoint of the theory of measurement of space and time.

We begin our discussion of spacetime splitting with ideal inertial observers in Minkowski spacetime. Imagine a global inertial frame with coordinates $x^\mu = (ct, \mathbf{x})$ and spacetime interval $-ds^2 = \eta_{\mu\nu} dx^\mu dx^\nu$, where $(\eta_{\mu\nu}) = \text{diag}(-1, 1, 1, 1)$. We define *fundamental observers* to be those at rest in space. The world lines of the fundamental observers are therefore temporal coordinate lines that thread spacetime. At each instant of coordinate time t , the corresponding orthogonal subspace is the “space” of the static observer. This is schematically depicted in panel (a) of Fig. 1. This “ $1 + 3$ ” splitting is the *threading* approach to separating time and space of a fundamental observer.

Alternatively, consider *any* congruence of inertial observers. In their bundle of world lines, we identify “local” $t = \text{constant}$ hypersurfaces, which must represent the *space* experienced by these observers. The vector normal to such a hypersurface must indicate the direction of increasing *time* coordinate. This “ $3 + 1$ ” splitting is the *slicing* approach to separating space and time of an observer family and is schematically depicted in panel (b) of Fig. 1.

To preserve the temporal order of events under Lorentz transformations, we must explicitly exclude superluminal phenomena. To see this, consider the temporal Lorentz transformation from the global inertial frame to another inertial frame moving with velocity \mathbf{v} , i.e.,

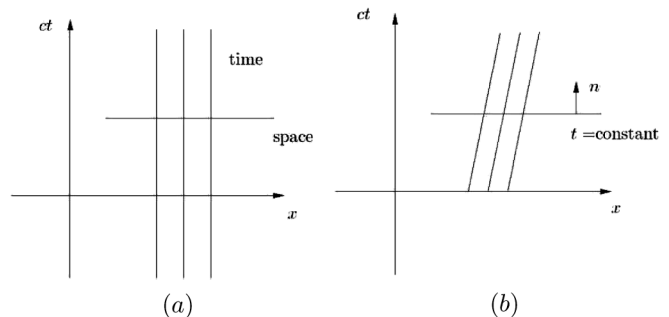


FIG. 1. (a) Schematic plot representing the *threading approach* to spacetime splitting in a global inertial frame in Minkowski spacetime. (b) Schematic plot representing the *slicing approach* for the congruence $x = x_0 + vt$, where x_0 varies over the congruence and v is a constant speed.

$$t' = \gamma \left(t - \frac{1}{c^2} \mathbf{v} \cdot \mathbf{x} \right). \quad (1)$$

Suppose two events (t_1, \mathbf{x}_1) and (t_2, \mathbf{x}_2) are causally related; hence, $|\Delta \mathbf{x}| \leq c|\Delta t|$, where $\Delta \mathbf{x} = \mathbf{x}_2 - \mathbf{x}_1$ and $\Delta t = t_2 - t_1$. Thus, $\Delta t' = \gamma(\Delta t - \mathbf{v} \cdot \Delta \mathbf{x}/c^2)$ implies $\Delta t'/\Delta t > 0$, and if $t_2 > t_1$, then $t'_2 > t'_1$. In this way, causality is preserved if there is no *superluminal propagation*.

The treatment of spacetime splitting can be extended to accelerated observers in Minkowski spacetime using the hypothesis of locality, namely, the assumption that an accelerated observer is instantaneously equivalent to an otherwise identical momentarily comoving inertial observer. Further extension to gravitational fields is then possible via Einstein's principle of equivalence. The threading and slicing approaches coincide for inertial observers in Minkowski spacetime. Using these extensions to accelerated systems and gravitational fields, we will show that they are compatible with each other when a universal temporal coordinate exists, but are in general *incompatible* in a gravitational field that has no cosmic time.

In a gravitational field, the threading and slicing approaches lead to restrictions on coordinate systems that may be used to cover the spacetime manifold. The threading coordinate conditions can be invariantly included in the geometric structure of Einstein's theory, so that *all* spacetime coordinate systems must obey these *standard* threading admissibility conditions. The situation is different with the slicing coordinate conditions; in general, they simply impose additional restrictions on coordinate systems so as to exclude causality violation via closed timelike curves.

It is interesting to study the influence of chronology violation on wave propagation. In fact, Huygens' principle assumes at the outset that coordinate time monotonically increases along the wave front. Therefore, the wave motion may exhibit some unusual features in chronology violating universes. A complete treatment of this topic is beyond the scope of this paper; however, we explore here some of the consequences of the absence of a cosmic time coordinate for wave motion in a gravitational field. In particular, we study wave propagation parallel to the axis of rotation of stationary Gödel-type universes.

Geometrical units ($c = G = 1$) will be used hereafter. The plan of this paper is as follows: In Sec. II, spacetime splitting is discussed in a gravitational field. The resulting conditions on the admissibility of coordinates are examined in Sec. III. Some aspects of wave motion in certain Gödel-type universe models are treated in Secs. IV, V, and VI. Sec. VII contains a discussion of our results.

II. OBSERVERS IN A GRAVITATIONAL FIELD: THREADING AND SLICING APPROACHES

A. Threading approach

The *fundamental observers* in a gravitational field are those at rest in space. These static observers are naturally

connected to a coordinate system. All other observers are pointwise related to the fundamental observers by Lorentz transformations. Imagine a fundamental observer with four-velocity u in an arbitrary gravitational field, as depicted in Fig. 2. In general, such an observer is accelerated. The spacetime interval along its trajectory—namely, where $dx^i = 0$, for $i = 1, 2, 3$ —denotes its proper time, $-ds^2 = g_{tt}dt^2$. Therefore, we must have $g_{tt} < 0$. Moreover, its orthogonal subspace σ represents its local rest space and is such that $u_\mu dx^\mu = 0$, where $u^\mu = (-g_{tt})^{-1/2} \delta^\mu_0$. Thus the equation that determines σ is $g_{tt}dt + g_{ti}dx^i = 0$. In general, one can write

$$g_{\mu\nu}dx^\mu \otimes dx^\nu = g_{tt} \left(dt + \frac{g_{ti}}{g_{tt}} dx^i \right) \otimes \left(dt + \frac{g_{tj}}{g_{tt}} dx^j \right) + \left(g_{ij} - \frac{g_{ti}g_{tj}}{g_{tt}} \right) dx^i \otimes dx^j, \quad (2)$$

so that

$$g_{\mu\nu}dx^\mu \otimes dx^\nu|_\sigma = \gamma_{ij} dx^i \otimes dx^j, \quad (3)$$

where

$$\gamma_{ij} = g_{ij} - \frac{g_{ti}g_{tj}}{g_{tt}}. \quad (4)$$

It follows from the inverse relationship between $(g_{\mu\nu})$ and $(g^{\mu\nu})$ that (γ_{ij}) and (g^{ij}) are inverse of each other; similarly, (g_{ij}) and $(\hat{\gamma}^{ij})$ are also inverse of each other, where

$$\hat{\gamma}^{ij} = g^{ij} - \frac{g^{ti}g^{tj}}{g^{tt}}. \quad (5)$$

The threading approach thus leads to the following coordinate admissibility conditions

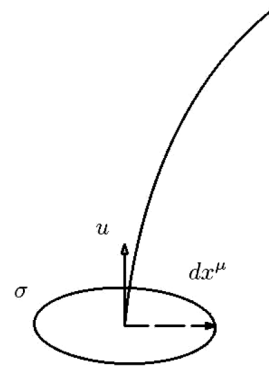


FIG. 2. Schematic diagram representing the future directed world line of a fundamental observer. To every admissible coordinate system, one can associate a set of fundamental observers, i.e., those at rest in space. The world line of such an observer is a time line. The infinitesimal orthogonal hypersurface σ is not in general a simultaneity hypersurface for the u congruence. The time lines thread the spacetime; hence, this is the threading approach to splitting spacetime into time plus space (“1 + 3”).

$$g_{tt} < 0, \quad (\gamma_{ij}) = \text{positive definite matrix.} \quad (6)$$

Given a system of coordinates that uniquely identify events in a spacetime region, the standard threading admissibility conditions have to do with the possibility of existence of hypothetical static observers at all events in that region.

We recall that a real symmetric matrix \mathcal{A} is positive definite if and only if there exists a real invertible matrix \mathcal{P} such that $\mathcal{A} = \mathcal{P}^T \mathcal{P}$. Thus if \mathcal{A} is a positive definite matrix, then so is its inverse; of course, this can also be seen immediately from the positivity of all of their eigenvalues. It follows, for instance, that for a positive definite matrix (\mathcal{A}_{ij}) , $\Phi = \mathcal{A}_{ij} dx^i dx^j$ can be expressed in matrix notation as $\Phi = (\mathcal{P} dx)^T (\mathcal{P} dx)$, which is manifestly positive, i.e., $\Phi \geq 0$.

The measurement of spatial distance between a fundamental observer and an arbitrary nearby observer by means of light signals, as well as the synchronization of their clocks, has been discussed in Ref. [2]; indeed, it is demonstrated there that the element of spatial distance, $d\ell$, as calculated here, $d\ell^2 = \gamma_{ij} dx^i dx^j$, coincides with the radar distance [3].

B. Slicing approach

Imagine an *arbitrary* congruence of observers in a gravitational field, as depicted in Fig. 3. This bundle of future directed timelike curves could, for instance, represent the point particles that form a compact object. The local $t = \text{constant}$ hypersurface Σ is defined by $dt = 0$; therefore,

$$g_{\mu\nu} dx^\mu \otimes dx^\nu|_{\Sigma} = g_{ij} dx^i \otimes dx^j. \quad (7)$$

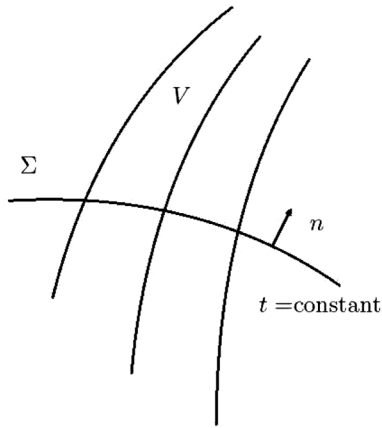


FIG. 3. Consider any congruence of future directed timelike world lines V in a standard admissible coordinate system. The infinitesimal constant-time hypersurfaces Σ should all be spacelike. Thus their normal vector field should be timelike. The hypersurfaces slice up this spacetime region; therefore, this is the slicing approach to the splitting of spacetime into space plus time (“3 + 1”). Note that $n_\mu V^\mu > 0$ and the temporal coordinate monotonically increases along such a congruence.

If Σ is to represent space, (g_{ij}) must be a positive definite matrix. Accordingly, its inverse, $(\hat{\gamma}^{ij})$, must also be a positive definite matrix. Moreover, the normal to Σ , $\mathcal{N}_\mu = \delta_\mu^0$, must be timelike; hence, $g^{\mu\nu} \mathcal{N}_\mu \mathcal{N}_\nu < 0$, or $g^{tt} < 0$. Thus the slicing approach leads to the following coordinate admissibility conditions

$$g^{tt} < 0, \quad (\hat{\gamma}^{ij}) = \text{positive definite matrix.} \quad (8)$$

These conditions ensure that in the coordinate patch under consideration *coordinate time increases monotonically along any timelike curve*. In particular, the application of these conditions to a bundle of fundamental observers implies that in such coordinate systems, t monotonically increases along the world line of a fundamental observer. *Coordinate systems that are admissible according to conditions (8) therefore exclude closed timelike curves.*

Let us note that for $g^{tt} \neq 0$, we have in general

$$g^{\mu\nu} \partial_\mu \otimes \partial_\nu = g^{tt} \left(\partial_t + \frac{g^{ti}}{g^{tt}} \partial_i \right) \otimes \left(\partial_t + \frac{g^{tj}}{g^{tt}} \partial_j \right) + \left(g^{ij} - \frac{g^{ti} g^{tj}}{g^{tt}} \right) \partial_i \otimes \partial_j, \quad (9)$$

which should be compared with Eq. (2); in fact, a formal duality between them can be illustrated by means of the lapse and shift functions.

C. Duality

In the threading approach, the lapse and shift functions are respectively M and M_i given by

$$M = \sqrt{-g_{tt}}, \quad M_i = -\frac{g_{ti}}{g_{tt}}. \quad (10)$$

Then, we have for metric (2) the equivalent representation

$$-ds^2 = -M^2 (dt - M_i dx^i) (dt - M_j dx^j) + \gamma_{ij} dx^i dx^j, \quad (11)$$

$$\gamma_{ij} = g_{ij} + M^2 M_i M_j.$$

The form of metric (11) is adapted to static observers with 4-velocity

$$u = \frac{1}{M} \partial_t, \quad u^b = -M (dt - M_i dx^i), \quad (12)$$

where the “flat” symbol (b) denotes the fully covariant form of a tensor. In fact,

$$-ds^2 = -(u_\alpha dx^\alpha)^2 + \gamma_{ij} dx^i dx^j. \quad (13)$$

In a similar way, one may introduce the lapse—shift notation in the slicing approach, namely,

$$N = \frac{1}{\sqrt{-g^{tt}}}, \quad N^i = -\frac{g^{ti}}{g^{tt}}. \quad (14)$$

Normalizing \mathcal{N}_μ , so that it becomes a vector of unit length n_μ , we have

$$n = -\frac{1}{N}(\partial_t - N^i \partial_i), \quad n^b = N dt. \quad (15)$$

Thus in the slicing approach, Eq. (9) can be expressed in terms of n^α and $\hat{\gamma}^{ij}$ in a manner that is completely analogous to the threading approach, namely,

$$-(\partial_s)^2 = -(n^\alpha \partial_\alpha)^2 + \hat{\gamma}^{ij}(\partial_i)(\partial_j). \quad (16)$$

However, a closer examination reveals that this formal duality does *not* extend to the physical conditions contained in Eqs. (6) and (8).

At any event p on the spacetime manifold, we have a tangent space T_p of vectors at p as well as the dual space T_p^* of one-forms at p with corresponding expressions of the metric tensor given, respectively, by Eqs. (2) and (9). At p , the symmetric matrix $(g_{\mu\nu})$ can be diagonalized, so that $(g_{\mu\nu}) = Q^{-1} D Q$, where Q , $Q Q^T = 1$, is an orthogonal matrix and $D = \text{diag}(d_0, d_1, d_2, d_3)$, where $d_0 < 0$ and $d_i > 0$, for $i = 1, 2, 3$. Thus by means of a local transformation and a certain scaling, $(g_{\mu\nu})$ at each point p can be reduced to $(\eta_{\mu\nu})$. Furthermore, we have that at p , $(g^{\mu\nu}) = Q^{-1} D^{-1} Q$, where the diagonal elements of D^{-1} respect the metric signature, as before. In a similar way, $(g^{\mu\nu})$ can be reduced to $(\eta^{\mu\nu})$ at p . This pointwise duality thus stays at the threading level and does *not* extend to the slicing approach. That is, the conditions given in Eq. (8) are in general different from those given in Eq. (6), as can be seen via explicit examples discussed in Sec. IV.

III. ADMISSIBILITY CONDITIONS

The coordinate conditions (6) that result from the threading approach can be naturally incorporated into the underlying geometric framework of general relativity; however, the slicing conditions (8) can be neither invariantly formulated nor are they sufficiently local to become part of the structure of Lorentzian geometry. Indeed, all coordinate patches in which the metric takes the form $g_{\mu\nu}(x) = \eta_{\mu\nu} + h_{\mu\nu}(x)$, where $h_{\mu\nu}(x)$ can be treated as a small perturbation—such as in the Riemann normal coordinates about any event or the Fermi normal coordinates about the world line of an observer—satisfy both conditions (6) and (8). While coordinate systems that are compatible with conditions (8) protect chronology, this does not mean that chronology violation does not occur in the gravitational field under consideration. In fact, general relativity *per se* does not require the existence of a cosmic time, as conditions (8) cannot be woven into the fabric of Lorentzian geometry [4]. From this viewpoint, general relativity must be abandoned if one insists on integrating the slicing coordinate conditions into the foundations of the theory of gravitation.

The threading and slicing approaches and their respective restrictions on coordinate charts have been discussed in one form or another by a number of authors. We should mention, in particular, the work of Zelmanov [5,6],

Cattaneo [7], Møller [8] and Lichnerowicz [9], among others. A historical review is beyond the scope of this paper. Following Synge [10], we refer to the combined threading and slicing conditions as the Lichnerowicz admissibility requirements (see the theorem on page 9 of Ref. [9]). The book of Landau and Lifshitz [2] contains a particularly clear discussion of the standard admissibility requirements.

It is a theorem of linear algebra [11] that a real symmetric $n \times n$ matrix A is *positive definite* if and only if the *principal minors* of A are all positive. These are n scalars defined by

$$\det \begin{bmatrix} A_{11} & \dots & A_{1k} \\ \cdot & & \cdot \\ \cdot & & \cdot \\ A_{k1} & \dots & A_{kk} \end{bmatrix}, \quad k = 1, \dots, n. \quad (17)$$

Now consider the standard threading admissibility conditions. These involve the matrix $(g_{\mu\nu})$: $g_{tt} < 0$ and $\gamma_{ij} = g_{ij} - g_{ii}g_{tj}/g_{tt}$ must form a positive definite matrix. Therefore,

$$(\gamma_{ij}) = \begin{bmatrix} \gamma_{11} & \gamma_{12} & \gamma_{13} \\ \gamma_{12} & \gamma_{22} & \gamma_{23} \\ \gamma_{13} & \gamma_{32} & \gamma_{33} \end{bmatrix} \quad (18)$$

must be such that

$$\gamma_{11} > 0, \quad \gamma_{11}\gamma_{22} - \gamma_{12}^2 > 0, \quad \det(\gamma_{ij}) > 0. \quad (19)$$

Note that $g_{tt} < 0$ and $\gamma_{11} = g_{11} - g_{t1}^2/g_{tt} > 0$ together imply that

$$g_{tt}\gamma_{11} = \det \begin{bmatrix} g_{tt} & g_{t1} \\ g_{t1} & g_{11} \end{bmatrix} < 0. \quad (20)$$

Next, $\gamma_{11}\gamma_{22} - \gamma_{12}^2 > 0$, when written out in detail, can be expressed as

$$\det \begin{bmatrix} \gamma_{11} & \gamma_{12} \\ \gamma_{21} & \gamma_{22} \end{bmatrix} = \frac{1}{g_{tt}} \det \begin{bmatrix} g_{tt} & g_{t1} & g_{t2} \\ g_{t1} & g_{11} & g_{12} \\ g_{t2} & g_{21} & g_{22} \end{bmatrix}. \quad (21)$$

Similarly, one finds that (see the Appendix)

$$\det(\gamma_{ij}) = \frac{1}{g_{tt}} \det(g_{\mu\nu}). \quad (22)$$

Putting all these results together, we find that *the standard threading admissibility conditions are equivalent to the statement that the principal minors of $(g_{\mu\nu})$ must all be negative for our $(-, +, +, +)$ signature. That is $(g_{\mu\nu})$ must be a negative definite matrix. Similarly, the slicing admissibility conditions imply that $(g^{\mu\nu})$ must be a negative definite matrix. The Lichnerowicz admissibility conditions then require that both $(g_{\mu\nu})$ and $(g^{\mu\nu})$ be negative definite matrices, i.e., all their principal minors must be negative.*

In many spacetimes of interest in general relativity, Lichnerowicz conditions reduce to the standard

admissibility conditions; indeed, most solutions of Einstein's equations are of this type [12]. This is the case, for instance, for the Kerr metric in the standard Boyer-Lindquist coordinates *outside the static limit*; however, CTCs occur in the region interior to the inner event horizon. Moreover, geodesic coordinate systems established along the world line of an accelerated observer in Minkowski spacetime are such that the threading and slicing conditions coincide [13,14]; somewhat similar results are expected for *radar coordinates* [3]. The important point here is that Lichnerowicz conditions exclude CTCs, whereas the standard coordinate conditions do not in general exclude them. Much has been written about CTCs and time travel in general relativity—see, for example, [15–18], the recent review [19] and the references cited therein.

IV. CAUSALITY AND WAVE PROPAGATION

Consider the propagation of test radiation in a coordinate patch containing a CTC. The CTC might leave an imprint on waves propagating in such a spacetime domain and such a trace could then be observationally detectable. In this connection, it appears useful to study wave phenomena in spacetimes with CTCs. Consider, for example, a massless field propagating in a spacetime region with a *closed null geodesic*. In the WKB approximation, we can imagine a wave packet moving essentially along the closed null geodesic, since in the WKB limit, massless wave propagation reduces to null geodesic motion. An examination of this situation reveals that the wave would appear to get immediately reflected: if the wave is initially moving forward in time, its spatial direction of propagation gets reversed when it starts to move backward in time. A similar result is expected for massive fields. We recall that a wave with propagation vector $k^\mu = (\omega, \mathbf{k})$ in an inertial frame of reference is, up to a certain amplitude function, of the form $\exp(-i\omega t + i\mathbf{k} \cdot \mathbf{x})$, so that as t increases, \mathbf{x} increases along the wave vector \mathbf{k} as the wave travels forward; however, if t decreases, the wave travels in the $-\mathbf{k}$ direction. When the direction of the arrow of time reverses, the wave appears to suffer a reflection. Thus we expect some unusual features for wave phenomena in gravitational fields that do not have a global time coordinate.

Consider, for instance, the propagation of waves in the exterior Kerr spacetime [20]; in fact, there is absorption of radiation through the horizon in this case, but the scattering process contains little information about the CTCs that exist in the *interior* Kerr spacetime. Thus we must concentrate on wave propagation in regions where the CTCs are accessible. An ideal case would be the Gödel universe [21–24], which is free of horizons and singularities. Do waves propagating in the Gödel universe exhibit such an imprint [25–28]? In fact, the elucidation of this issue originally motivated the preliminary analysis presented in

this paper and, as will become clear below, its complete treatment remains a task for the future.

The metric of Gödel's universe in the original quasi-Cartesian coordinates can be written as

$$\begin{aligned}
 -ds^2 &= -dt^2 - 2\sqrt{2}U dt dy + dx^2 - U^2 dy^2 + dz^2, \\
 U &= e^{\sqrt{2}\Omega x},
 \end{aligned} \tag{23}$$

where $\Omega > 0$ is the frequency of universal rotation and ∂_t , ∂_y and ∂_z are three of the five Killing vectors of this spacetime. The determinant of the metric turns out to be $g = -U^2$ and the inverse metric is thus given by

$$\begin{aligned}
 -(\partial_s)^2 &= (\partial_t)^2 - 2\sqrt{2}U^{-1}(\partial_t)(\partial_y) + (\partial_x)^2 \\
 &\quad + U^{-2}(\partial_y)^2 + (\partial_z)^2.
 \end{aligned} \tag{24}$$

The fundamental observers follow geodesics of metric (23); in fact, their four-velocity u is given by $u = \partial_t$, so that we have

$$G_{\alpha\beta} = \Omega^2(g_{\alpha\beta} + 2u_\alpha u_\beta). \tag{25}$$

The source of Gödel's solution of the Einstein field equations is dust of constant energy density ρ , with fluid unit four-velocity aligned with the time coordinate lines, and cosmological constant $\Lambda = -\Omega^2 = -4\pi\rho$. Here $\Omega > 0$ describes an intrinsic counterclockwise rotation of the universe around the z axis. The threading conditions are satisfied by metric (23), while it is clear from the inverse metric (24) that $g^{tt} = 1$. Indeed, the slicing coordinate conditions do not hold and the original Gödel coordinates are therefore not admissible in the sense of Lichnerowicz.

In [29], exact Fermi normal coordinates were first explicitly introduced along the world line of a fiducial fundamental observer in Gödel spacetime. Imposing Lichnerowicz conditions on these Fermi coordinates limits their domain of applicability to the interior of a cylindrical region of radius $\sqrt{2} \ln(1 + \sqrt{2})/\Omega \approx 1.25/\Omega$ about the axis of rotation [29]. This boundary cylinder consists of closed null curves beyond which CTCs exist.

Propagation of test electromagnetic radiation in the Gödel universe was first investigated in [25] with the express purpose of demonstrating the coupling of photon spin with the essentially uniform gravitomagnetic field of this rotating universe. The formal simplicity of the Gödel metric made it possible to find the exact solution of the perturbation equations and thus establish the gravitational coupling of the helicity of the photon to the rotation of the Gödel universe. To solve Maxwell's equations, it was deemed convenient to use the Skrotskii method, which is based on the analogy between a gravitational field and an optical medium [30], and replace the Gödel field with an effective gyrotropic medium. As is well known, in the treatment of electrodynamics in arbitrary spacetime coordinates, it is always possible to introduce instead a certain hypothetical medium with definite constitutive properties

that occupies Minkowski spacetime in quasi-Cartesian coordinates [31]; in fact, this method is conceptually related to Weyl's formulation of Fermat's principle in general relativity and to Gordon's optical metric [10,32,33]. The physical description of photon helicity states is straightforward in scattering situations involving asymptotically flat spacetimes, but requires special care in universe models that are not asymptotically flat. For instance, in the Gödel universe this connection is established via the limit as $\Omega \rightarrow 0$ and Gödel spacetime reduces to Minkowski spacetime. Furthermore, we expect that the spectrum of electromagnetic wave perturbations of the Gödel universe would contain certain discreteness properties in close analogy with the Landau spectrum of charged particles in a uniform magnetic field. Out of the complete spectrum of finite perturbations, there is a part that satisfies these various physical requirements and only this part of the full spectrum was given in [25] without providing details of the selection process. The preferred part of the spectrum involves wave vectors whose magnitudes are sufficiently large compared to Ω , corresponding to a pulse of radiation produced by a localized source. From this solution one finds, in addition to the spin-rotation-gravity coupling, that *waves cannot propagate parallel to the direction of rotation of this universe* and, moreover, that waves can propagate only in one direction along the y axis. We wish to determine how these features as well as the spectrum are connected with the violation of causality in the Gödel universe.

Electromagnetic fields in the Gödel universe have been discussed via the Debye potential formalism in [34]. Moreover, the scalar and neutrino perturbations of the Gödel universe have been studied by a number of authors—see [35–39] and the references therein.

To see the imprint of acausality on these wave results, it is necessary to compare them with the results of wave propagation in causal Gödel-type rotating universes that possess cosmic time. Indeed, Gödel-type solutions of Einstein's equations exist that contain both causal and acausal universe models—see [40–43] and the references cited therein. The metric of such Gödel-type solutions is of the form

$$-ds^2 = -dt^2 - 2\eta R(t)\mathcal{U}dt dy + R^2(t)[dx^2 - (\eta^2 - 1)\mathcal{U}^2 dy^2 + dz^2], \quad (26)$$

where $R(t)$ is the scale factor,

$$\mathcal{U} = e^{\lambda x}, \quad \eta = \frac{2\Omega}{\lambda}. \quad (27)$$

Here $\lambda > 0$ is a constant parameter and $\Omega > 0$ is a vorticity parameter. The Gödel solution is recovered for $R = 1$, $\lambda = \sqrt{2}\Omega$ and $\eta = \sqrt{2}$. In general, Eq. (26) represents a spacetime of Petrov type D with three Killing vector fields given by $\partial_x - \lambda y \partial_y$, ∂_y and ∂_z , so that it is a spatially homogeneous universe of type III in the Bianchi classification. Let

$\theta^\mu = \delta^\mu_0$ be the four-velocity vector of the family of fundamental observers in the Gödel-type universe, then this congruence has expansion and rotation, but no shear. In particular, the *rotation tensor* can be expressed as

$$f_{\alpha\beta} = \theta_{[\alpha;\beta]} + a_{[\alpha}\theta_{\beta]}, \quad (28)$$

where a_μ is the acceleration of this congruence given by $a^b = -\eta \dot{R} \mathcal{U} dy$ with $\dot{R} = dR/dt$. It follows that the only nonzero components of $f_{\alpha\beta}$ are given by $f_{xy} = -f_{yx} = \Omega R \mathcal{U}$, so that the vorticity of the congruence of the fundamental observers can be expressed as

$$\tilde{\Omega} = \left(\frac{1}{2} f_{\alpha\beta} f^{\alpha\beta} \right)^{1/2} = \frac{\Omega}{R(t)}. \quad (29)$$

Only positive square roots are considered throughout this paper. Moreover, the expansion is given by $3\dot{R}/R$. In the special case of stationary Gödel-type universes with $R = 1$, the fundamental observers follow geodesics and the vorticity of their congruence is simply Ω . Various sources have been considered for universes of Gödel type [40,41,43]; moreover, the corresponding two-fluid cosmological models have been discussed in [44].

For metric (26), we find $g = -R^6 \mathcal{U}^2$ and hence the inverse metric is given by

$$-(\partial_s)^2 = (\eta^2 - 1)(\partial_t)^2 - 2\eta R^{-1} \mathcal{U}^{-1}(\partial_t)(\partial_y) + R^{-2}[(\partial_x)^2 + \mathcal{U}^{-2}(\partial_y)^2 + (\partial_z)^2]. \quad (30)$$

The threading coordinate conditions are satisfied here, while the slicing coordinate conditions are only satisfied for $\eta < 1$. Thus the solutions are *causal* for $\eta < 1$ and *acausal* for $\eta > 1$, while $\eta = 1$ constitutes a rather special limiting case.

A detailed treatment of the propagation of electromagnetic waves in this Gödel-type universe is due to Korotky and Obukhov [26] and Saibatalov [27], who provided a complete description of the spectrum and outlined the main differences between the spectra in the causal and acausal cases. We emphasize that the more extended treatments of the Gödel case in [26,27] go beyond the results of [25], where only the part of the spectrum that was deemed most physically reasonable was presented. In particular, the discrepancy between the results of [25,27] is *not* due to any inherent limitation of the Skrotskii method.

It is interesting to note that scalar and neutrino perturbations of Gödel-type universes have been the subject of recent investigations [28,45,46].

In the following section, we investigate the propagation of radiation parallel to the direction of rotation of a *stationary* Gödel-type universe with $R = 1$. This two-parameter subclass has been thoroughly investigated in [47,48] and the references cited therein.

V. WAVES IN STATIONARY GÖDEL-TYPE UNIVERSES

Consider the propagation of waves in metric (26) with $R = 1$. It turns out that the main result of this analysis is essentially independent of any particular wave equation; therefore, we consider the scalar wave equation for the sake of simplicity. We seek a solution of

$$\nabla_\alpha \partial^\alpha \Psi - \hat{m}_0^2 \Psi = 0 \quad (31)$$

in the form

$$\Psi = e^{i(-\omega t + k_2 y + k_3 z)} \psi(x), \quad (32)$$

where $\hat{m}_0 = m_0/\hbar$, m_0 is the mass of the scalar particle and ω , k_2 and k_3 are constant propagation parameters. The function $\psi(x)$ satisfies

$$\mathcal{U} \frac{d}{dx} \left(\mathcal{U} \frac{d\psi}{dx} \right) - \{k_2^2 + 2\eta\omega k_2 \mathcal{U} + [(\eta^2 - 1)\omega^2 + k_3^2 + \hat{m}_0^2] \mathcal{U}^2\} \psi = 0. \quad (33)$$

Now introducing $\mathcal{U}^{-1} = \chi$ as a new variable and imposing the requirement that the wave travel in the z direction ($k_2 = 0$), we find

$$\lambda^2 \chi^2 \frac{d^2 \psi}{d\chi^2} - [(\eta^2 - 1)\omega^2 + k_3^2 + \hat{m}_0^2] \psi = 0. \quad (34)$$

Alternatively, Eq. (33) with $k_2 = 0$ can be written in terms of variable x as a second order ordinary differential equation with constant coefficients and its solutions are of the form $\exp(-\lambda\sigma x)$. For $x: -\infty \rightarrow \infty$, $\chi: \infty \rightarrow 0$ and the solutions for ψ can be written as χ^σ , where

$$\lambda^2 \sigma(\sigma - 1) = (\eta^2 - 1)\omega^2 + k_3^2 + \hat{m}_0^2. \quad (35)$$

The only finite solution for ψ in the range $\chi: 0 \rightarrow \infty$ is a *constant*, provided

$$(\eta^2 - 1)\omega^2 + k_3^2 + \hat{m}_0^2 = 0. \quad (36)$$

Therefore, if $\eta < 1$, so that the stationary Gödel-type universe is *causal*, we have

$$\Psi = \psi_0 e^{i(-\omega t + k_3 z)}, \quad \omega^2 = \frac{k_3^2 + \hat{m}_0^2}{1 - \eta^2}, \quad (37)$$

where ψ_0 is a constant; otherwise, for $\eta \geq 1$ wave propagation parallel to the rotation axis is impossible. That is, waves can only propagate parallel to the rotation axis of *causal* stationary Gödel-type universes. Let us recall here that waves can freely propagate parallel to the rotation axis of a compact gravitating source as well as a Kerr black hole [20,25,30].

What happens to a packet of scalar radiation produced in the neighborhood of $z = z_0$ in the acausal ($\eta \geq 1$) Gödel-type universe? It follows from Eq. (36) that the radiation is then confined in space around z_0 . That is, with $k_3 = \pm i\kappa$,

where we use the upper sign for $z > z_0$ and the lower sign for $z < z_0$, $\kappa > 0$ is given by

$$\kappa = [(\eta^2 - 1)\omega^2 + \hat{m}_0^2]^{1/2}. \quad (38)$$

Then the solution for the scalar field can be expressed as

$$\Psi = \phi_0 e^{-i\omega t - \kappa(z - z_0)}, \quad z \geq z_0, \quad (39)$$

and

$$\Psi = \phi_0 e^{-i\omega t + \kappa(z - z_0)}, \quad z \leq z_0, \quad (40)$$

where ϕ_0 is a constant.

Consider now the propagation of radiation in the limit of high frequencies and wave numbers. For electromagnetic radiation, the geometric optics (or eikonal) approximation scheme results in the massless Hamilton-Jacobi equation and the corresponding propagation along null geodesic rays [49]. This is indeed the case for any reasonable massless wave equation. In the massive case, the analogous treatment is the WKB approximation, where for the scalar field we set

$$\Psi = e^{iS/\hbar} (\Psi_0 + \hbar \Psi_1 + \dots). \quad (41)$$

Substitution of this ansatz into Eq. (31) results in an expansion in increasing powers of \hbar starting with \hbar^{-2} ; for $\hbar \rightarrow 0$, the terms in the expansion proportional to \hbar^{-2} , \hbar^{-1} and \hbar^0 must vanish. The primary result, which follows from setting the coefficient of \hbar^{-2} equal to zero, is indeed independent of the nature of the wave and is the Hamilton-Jacobi equation

$$g^{\mu\nu} \nabla_\mu S \nabla_\nu S + m_0^2 = 0, \quad (42)$$

where the scalar field S is related to action. The other equations then describe, for instance, how the wave amplitude Ψ_0 propagates along the geodesic that is the solution of the Hamilton-Jacobi equation, and so on [49].

In the case under consideration, Eq. (30) implies that

$$\begin{aligned} (\eta^2 - 1) \left(\frac{\partial S}{\partial t} \right)^2 - 2\eta \mathcal{U}^{-1} \left(\frac{\partial S}{\partial t} \right) \left(\frac{\partial S}{\partial y} \right) + \left(\frac{\partial S}{\partial x} \right)^2 \\ + \mathcal{U}^{-2} \left(\frac{\partial S}{\partial y} \right)^2 + \left(\frac{\partial S}{\partial z} \right)^2 + m_0^2 = 0. \end{aligned} \quad (43)$$

For propagation along the z direction, it is natural to assume that

$$S = -Et + P_3 z, \quad (44)$$

where E and P_3 are real constants representing the energy and momentum of the particle. Substitution of Eq. (44) into Eq. (43) yields

$$(\eta^2 - 1)E^2 + P_3^2 + m_0^2 = 0. \quad (45)$$

This equation has no real solution in the acausal case ($\eta \geq 1$), but in the causal case ($\eta < 1$), the solution corresponds to Eq. (37), as expected. That is, the wave front is the hypersurface of constant phase, which is proportional

to S in the eikonal approximation; therefore, hypersurfaces of constant S must be spacelike (for massive fields) or null (for massless fields) in accordance with the Hamilton-Jacobi equation.

In general, the solution of the Hamilton-Jacobi equation corresponds to a geodesic. To see this, let $m_0 w_\mu = \nabla_\mu S$ and note that $w_{\mu;\nu} = w_{\nu;\mu}$; that is, w_μ is a curl-free vector field. Taking covariant derivative of Eq. (42), we find that $g^{\mu\nu} w_{\mu;\alpha} w_\nu = 0$. This can be written, using the curl-free property, as $g^{\mu\nu} w_{\alpha;\mu} w_\nu = 0$, which is the geodesic equation for $w^\mu = dx^\mu/ds$. Thus in the case under consideration, $m_0 w_\mu = (-E, 0, 0, P_3)$ and one can easily find the curl-free geodesic congruence in the causal case ($\eta < 1$), namely,

$$t = t_0 + \frac{E}{m_0}(1 - \eta^2)(\tau - \tau_0), \quad (46)$$

where τ is the proper time along the world line and

$$\begin{aligned} x &= x_0, & y &= y_0 + \frac{\eta E}{m_0 \mathcal{U}(x_0)}(\tau - \tau_0), \\ z &= z_0 + \frac{P_3}{m_0}(\tau - \tau_0). \end{aligned} \quad (47)$$

Here t_0, x_0, y_0, z_0 and τ_0 are constants of integration and E and P_3 are connected via Eq. (45). There is no corresponding geodesic for $\eta \geq 1$, as the Hamilton-Jacobi equation results in an imaginary energy in this case.

It is puzzling that the geodesic corresponding to the eikonal limit of waves propagating in the z direction for $\eta < 1$ involves motion in the y direction as well. Let us note that in general, metric (26) allows geodesics moving parallel to the axis of rotation *regardless of the value of η* ; indeed,

$$\zeta^\mu = \gamma(1, 0, 0, \beta), \quad (48)$$

where β and $\gamma = (1 - \beta^2)^{-1/2}$ are constants, is the unit four-velocity of such geodesic observers. However, $m_0 \zeta_\mu$ is *not* the gradient of a scalar, since ζ_μ is not a curl-free vector field, as can be directly verified. A bundle of neighboring geodesics has in general nonzero vorticity; on the other hand, if the vorticity vanishes at one point, then the bundle will be completely free of vorticity—see page 84 of [23].

The remaining difficulty has to do with the fact that the Hamilton-Jacobi equation does not result in a *real* particle energy for $\eta \geq 1$. *This circumstance is a consequence of the violation of slicing coordinate conditions in metric (26)*. To see this in general, note that the geodesic equation is derived from the extremum of the action, $\delta S = 0$, where

$$S = -m_0 \int ds \quad (49)$$

is a functional of the path that connects the two *fixed* events that are endpoints of the integral in Eq. (49). Let us define

the Lagrangian $L(t, x^i, v^j) = -m_0 ds/dt$, where $v^i = dx^i/dt$. Using $p_i = \partial L/\partial v^i$, the corresponding Hamiltonian $H(t, x^i, p_j) = p_i v^i - L$ works out to be $-p_0$, where p_0 , as a function of t, x^i and p_j , must be obtained from $g^{\mu\nu} p_\mu p_\nu + m_0^2 = 0$. This equation has the solution

$$-p_0 = H(t, x^i, p_j) = \frac{g^{ii}}{g^{tt}} p_i \pm \left(\frac{m_0^2 + \hat{\gamma}^{ij} p_i p_j}{-g^{tt}} \right)^{1/2}. \quad (50)$$

Thus the slicing coordinate conditions would ensure that the Hamiltonian in Eq. (50) is real [50]. Then, integrating along *geodesics* in Eq. (49), but now with only the initial event kept fixed and the final event considered variable, we have

$$S(t, x^i) = \int^{(t, x^i)} (p_j v^j - H) dt, \quad (51)$$

so that $dS = p_i dx^i + p_0 dt$, or $\nabla_\mu S = p_\mu$, which then leads directly to the Hamilton-Jacobi equation. However, if Eq. (50) cannot produce a real solution, then a real Hamiltonian does not exist and the connection of the geodesic equation with the Hamilton-Jacobi equation and hence wave propagation is severed. We should mention in passing that this derivation of the Hamilton-Jacobi equation implies that a fountain of neighboring geodesics emanating from a single event has vanishing vorticity.

It is interesting to illustrate these results for the propagation of Dirac particles parallel to the rotation axis of stationary Gödel-type universes.

VI. DIRAC EQUATION IN STATIONARY GÖDEL-TYPE UNIVERSES

Let us now consider the massive Dirac equation in a stationary Gödel-type universe described by metric (26) with $R = 1$. Here we follow the standard notation for the Newman-Penrose formalism as employed in the monograph of Chandrasekhar [51]. Therefore, due to the nature of the subject matter, the notations and conventions used in this section are generally independent of the rest of the paper, except when otherwise indicated; in particular, we switch the sign of the metric signature.

An orthonormal frame naturally adapted to the space-time coordinates is given by

$$\begin{aligned} \omega^{\hat{t}} &= dt + \eta \mathcal{U} dy, & \omega^{\hat{x}} &= dx, \\ \omega^{\hat{y}} &= \mathcal{U} dy, & \omega^{\hat{z}} &= dz, \end{aligned} \quad (52)$$

which can be used to form a null tetrad frame

$$\begin{aligned} l &= \frac{1}{\sqrt{2}}(\omega^{\hat{t}} + \omega^{\hat{z}}), & n &= \frac{1}{\sqrt{2}}(\omega^{\hat{t}} - \omega^{\hat{z}}), \\ m &= \frac{1}{\sqrt{2}}(\omega^{\hat{x}} + i\omega^{\hat{y}}). \end{aligned} \quad (53)$$

The associated nonvanishing spin coefficients are

$$\alpha = -\beta = -\frac{\sqrt{2}}{4}\lambda, \quad \mu = \rho = 2\epsilon = 2\gamma = -\frac{i\sqrt{2}}{2}\Omega, \quad (54)$$

while the only nonvanishing Weyl scalar is

$$\psi_2 = -\frac{\lambda^2}{6}(\eta^2 - 1), \quad (55)$$

as metric (26) is of Petrov type D. Following [51], the massive Dirac equation in the Newman-Penrose formalism is summarized by the following set of equations

$$\begin{aligned} (D + \epsilon - \rho)F_1 + (\delta^* + \pi - \alpha)F_2 &= im_*G_1, \\ (\Delta + \mu - \gamma)F_2 + (\delta + \beta - \tau)F_1 &= im_*G_2, \\ (D + \epsilon^* - \rho^*)G_2 - (\delta + \pi^* - \alpha^*)G_1 &= im_*F_2, \\ (\Delta + \mu^* - \gamma^*)G_1 - (\delta^* + \beta^* - \tau^*)G_2 &= im_*F_1, \end{aligned} \quad (56)$$

where F_1, F_2, G_1 and G_2 are the components of the Dirac spinor, $m_* = \hat{m}_0/\sqrt{2}$ is proportional to the mass of the Dirac particle (see [51], p. 543) and

$$D = l^\mu \nabla_\mu, \quad \Delta = n^\mu \nabla_\mu, \quad \delta = m^\mu \nabla_\mu \quad (57)$$

are directional derivatives along the null tetrad frame. Thus,

$$\begin{aligned} (D + \epsilon - \rho)F_1 + (\delta^* - \alpha)F_2 &= im_*G_1, \\ (\Delta + \rho - \epsilon)F_2 + (\delta - \alpha)F_1 &= im_*G_2, \\ (D - \epsilon + \rho)G_2 - (\delta - \alpha)G_1 &= im_*F_2, \\ (\Delta - \rho + \epsilon)G_1 - (\delta^* - \alpha)G_2 &= im_*F_1, \end{aligned} \quad (58)$$

so that the spin coefficients are involved only through a real α and the combination

$$\epsilon - \rho = -\epsilon = \frac{i\sqrt{2}}{4}\Omega, \quad (59)$$

which is purely imaginary. Hence, Dirac equation can be finally expressed as

$$\begin{aligned} (D - \epsilon)F_1 + (\delta^* - \alpha)F_2 &= im_*G_1, \\ (\Delta + \epsilon)F_2 + (\delta - \alpha)F_1 &= im_*G_2, \\ (D + \epsilon)G_2 - (\delta - \alpha)G_1 &= im_*F_2, \\ (\Delta - \epsilon)G_1 - (\delta^* - \alpha)G_2 &= im_*F_1. \end{aligned} \quad (60)$$

Let us look for separable solutions of the form

$$[F_1, F_2, G_1, G_2] = [X_1(x), X_2(x), Y_1(x), Y_2(x)]e^{-i\omega t + ik_2 y + ik_3 z} \quad (61)$$

with $k_2 = 0$, as for scalar waves examined in the previous section.

The resulting equations for the spinor components $X_{1,2}$ and $Y_{1,2}$ form a first order system of ordinary differential equations with constant (complex) coefficients, namely,

$$\frac{d}{dx} \begin{pmatrix} X_1 \\ X_2 \\ Y_1 \\ Y_2 \end{pmatrix} = \begin{pmatrix} A_+ & B_+ & 0 & b \\ B_- & A_- & b & 0 \\ 0 & -b & A_+ & C_+ \\ -b & 0 & C_- & A_- \end{pmatrix} \begin{pmatrix} X_1 \\ X_2 \\ Y_1 \\ Y_2 \end{pmatrix}, \quad (62)$$

where $b = i\hat{m}_0$ and

$$\begin{aligned} A_\pm &= -\frac{\lambda}{2} \pm \omega\eta, & B_\pm &= i\left[-\omega \pm \left(k_3 + \frac{\Omega}{2}\right)\right], \\ C_\pm &= i\left[\omega \pm \left(k_3 - \frac{\Omega}{2}\right)\right]. \end{aligned} \quad (63)$$

Let us note that the function $\mathcal{U} = \exp(\lambda x)$ appears in Eq. (52) and the subsequent analysis in association with variation along the y direction, but such variation disappears once we set $k_2 = 0$ in Eq. (61).

The eigenvalues of the 4×4 matrix in Eq. (62) determine the solutions. These are given by

$$\begin{aligned} \Lambda_{1,\dots,4} &= -\frac{\lambda}{2} + \Sigma \left[\omega^2(\eta^2 - 1) \right. \\ &\quad \left. + \left(\sqrt{\hat{m}_0^2 + k_3^2} + \Sigma' \frac{\Omega}{2} \right)^2 \right]^{1/2}, \end{aligned} \quad (64)$$

where Σ and Σ' independently can be either $+1$ or -1 ; that is, $\Sigma^2 = \Sigma'^2 = 1$. The elementary solutions of system (62) are of the form $e^{\Lambda_I x}$, where $I = 1, \dots, 4$. We require that the Dirac equation have finite solutions for all the spinor components for $x: -\infty \rightarrow \infty$. The only possibility is then that of having constant solutions for $X_{1,2}$ and $Y_{1,2}$, i.e., the determinant of the 4×4 matrix in Eq. (62) must vanish. Thus the allowed values of ω satisfy the relation

$$\omega^2(\eta^2 - 1) + \left(\sqrt{\hat{m}_0^2 + k_3^2} \pm \frac{\Omega}{2} \right)^2 - \frac{\lambda^2}{4} = 0, \quad (65)$$

which agrees with Eq. (36) in the WKB regime. That is, with $E = \hbar\omega$ and $P_3 = \hbar k_3$, Eq. (65) can be written as

$$\begin{aligned} (\eta^2 - 1)E^2 + P_3^2 + m_0^2 \pm \hbar\Omega(P_3^2 + m_0^2)^{1/2} \\ + \frac{1}{4}\hbar^2\Omega^2(1 - 4\eta^{-2}) = 0, \end{aligned} \quad (66)$$

so that as $\hbar \rightarrow 0$, while E, P_3 and m_0 are held fixed, we recover the WKB limit.

The two branches of Eq. (66) reflect the spin $1/2$ character of the Dirac particle; indeed, with $m_0 = 0$, the helicity-rotation coupling evident in the spectrum (66) is precisely reminiscent of the corresponding result for photons [25], when one allows for the different helicities involved.

For a localized packet of cosmic ray protons, for instance, we expect that the packet is dominated by $k_3 \gg \lambda$ and $k_3 \gg \Omega$, where $1/\lambda$ and $1/\Omega$ are length scales associated with the Gödel-type universe. Thus propagation of the packet parallel to the rotation axis is generally possible in the causal case ($\eta < 1$) and impossible in the acausal case ($\eta > 1$). In the latter situation, we expect confinement

of the *high-energy* particles in space, just as for the scalar field—see Eqs. (39) and (40)—since waves with $k_3 < \lambda$ and $k_3 < \Omega$ may be able to propagate in accordance with Eq. (65).

VII. DISCUSSION

The most basic measurements of an observer consist of the determination of temporal and spatial intervals. In this connection, we have explored the admissibility of coordinate patches in some open spacetime region on the basis of splitting spacetime into its elements via the threading and slicing approaches. All coordinate systems in general relativity must satisfy the threading (Landau-Lifshitz) conditions. The Lichnerowicz admissibility conditions involve the additional slicing coordinate requirements, which protect chronology and exclude CTCs.

If it were possible to incorporate the slicing coordinate conditions into the geometric structure of Lorentzian geometry, violations of chronology and hence CTCs would be forbidden in the general theory of relativity. However, since the local $t = \text{constant}$ hypersurfaces cannot be naturally absorbed into the foundations of general relativity, the slicing conditions simply place additional restrictions on possible coordinate systems.

The threading and slicing coordinate requirements together ensure that the coordinates assigned to spacetime events are physically reasonable. As such, coordinate systems that can be physically constructed, such as the GPS system, are expected to satisfy Lichnerowicz coordinate conditions. We have examined the physical implications of Lichnerowicz conditions by studying wave propagation in spacetimes that do not possess universal temporal coordinates. In such stationary rotating Gödel-type universes, for instance, we show that radiation in the WKB approximation cannot propagate parallel to the axis of rotation. Possible generalizations of this result as well as further consequences of chronology violation for wave propagation are topics for future investigation.

ACKNOWLEDGMENTS

Helpful discussions with R. Jantzen, S. Kopeikin and Y. Obukhov are gratefully acknowledged.

APPENDIX: GENERAL FORM OF EQ. (22)

Imagine an arbitrary $(1+n) \times (1+n)$ matrix of the form

$$A = \begin{pmatrix} A_{00} & A_{01} & \dots & A_{0n} \\ A_{10} & A_{11} & \dots & A_{1n} \\ \vdots & \vdots & \dots & \vdots \\ A_{n0} & A_{n1} & \dots & A_{nn} \end{pmatrix}, \quad (\text{A1})$$

which can be denoted as

$$A = \begin{pmatrix} A_{00} & A_{0i} \\ A_{i0} & A_{ij} \end{pmatrix}, \quad i, j = 1, 2, \dots, n. \quad (\text{A2})$$

We assume that $A_{00} \neq 0$; in fact, this condition can be ensured—unless A is trivial in the sense that it has only zeros in its first row and column—by appropriately shifting rows or columns, as we are only interested in $\det(A)$. Then, it is possible to show that

$$\det(A) = A_{00} \det\left(A_{ij} - \frac{A_{i0}A_{0j}}{A_{00}}\right). \quad (\text{A3})$$

Consider the first row of matrix A ,

$$R_0 = [A_{00}, A_{01}, \dots, A_{0n}]. \quad (\text{A4})$$

Now subtract $R_0(A_{10}/A_{00})$ from the second row of matrix A , $R_0(A_{20}/A_{00})$ from the third row and so on. In this process, the determinant of the matrix does not change due to its alternating character but matrix A is transformed into

$$B = \begin{pmatrix} A_{00} & A_{0i} \\ 0 & A_{ij} - \frac{A_{i0}A_{0j}}{A_{00}} \end{pmatrix}. \quad (\text{A5})$$

The determinant of this matrix is simply

$$\det(B) = A_{00} \det\left(A_{ij} - \frac{A_{i0}A_{0j}}{A_{00}}\right), \quad (\text{A6})$$

which proves Eq. (A3), since $\det(A) = \det(B)$.

-
- [1] R. T. Jantzen, P. Carini, and D. Bini, *Ann. Phys. (N.Y.)* **215**, 1 (1992).
 - [2] L. D. Landau and E. M. Lifshitz, *The Classical Theory of Fields* (Pergamon, New York, 1975).
 - [3] D. Bini, L. Lusanna, and B. Mashhoon, *Int. J. Mod. Phys. D* **14**, 1413 (2005).
 - [4] J. K. Beem, P. E. Ehrlich, and K. L. Easley, *Global Lorentzian Geometry* (Dekker, New York, 1996), 2nd. ed..
 - [5] A. Zelmanov, dissertation, in Russian (1944). [English translation: <http://zelmanov.ptep-online.com/books/zelmanov1944.pdf>].
 - [6] A. L. Zelmanov and V. G. Agakov, *Elements of the General Theory of Relativity*, in Russian (Nauka, Moscow, 1988).
 - [7] C. Cattaneo, *Fluides et Champ Gravitationnel en Relativité Générale*, ed. (CNRS, Paris, 1969), p. 227.

- [8] C. Møller, *Theory of Relativity* (Oxford University Press, New York, 1976), 2nd. ed..
- [9] A. Lichnerowicz, *Théories Relativistes de la Gravitation et de l'Électromagnétisme* (Masson, Paris, 1955).
- [10] J.L. Synge, *Relativity: The General Theory* (North-Holland, Amsterdam, 1971).
- [11] K. Hoffman and R. Kunze, *Linear Algebra* (Prentice-Hall, Englewood Cliffs, NJ, 1961).
- [12] H. Stephani, D. Kramer, M.A.H. MacCallum, C. Hoenselaers, and E. Hertl, *Exact Solutions of Einstein's Theory* (Cambridge University Press, Cambridge, 2003), 2nd. ed..
- [13] B. Mashhoon, in *The Measurement of Gravitomagnetism: A Challenging Enterprise*, edited by L. Iorio (NOVA Science, Hauppauge, NY, 2007), Ch. 3, p. 29.
- [14] B. Mashhoon, in *Advances in General Relativity and Cosmology*, edited by G. Ferrarese (Pitagora, Bologna, 2003), p. 323.
- [15] W.B. Bonnor, *Proc. Cambridge Philos. Soc.* **66**, 145 (1969).
- [16] W.B. Bonnor, *Classical Quantum Gravity* **18**, 1381 (2001).
- [17] W.B. Bonnor, *Int. J. Mod. Phys. D* **12**, 1705 (2003).
- [18] F.I. Cooperstock and S. Tieu, *Found. Phys.* **35**, 1497 (2005).
- [19] F.S.N. Lobo, [arXiv:1008.1127](https://arxiv.org/abs/1008.1127).
- [20] J.A.H. Futterman, F.A. Handler, and R.A. Matzner, *Scattering from Black Holes* (Cambridge University Press, Cambridge, 1988).
- [21] K. Gödel, *Rev. Mod. Phys.* **21**, 447 (1949).
- [22] G.F.R. Ellis, *Gen. Relativ. Gravit.* **32**, 1399 (2000).
- [23] S.W. Hawking and G.F.R. Ellis, *The Large Scale Structure of Space-Time* (Cambridge University Press, Cambridge, 1973).
- [24] M. Novello, I. Damião Soares, and J. Tiomno, *Phys. Rev. D* **27**, 779 (1983).
- [25] B. Mashhoon, *Phys. Rev. D* **11**, 2679 (1975).
- [26] V.A. Korotky and Y.N. Obukhov, *Moscow Univ. Phys. Bull.* **46**, 4 (1991).
- [27] R.X. Saibatalov, *Gen. Relativ. Gravit.* **27**, 697 (1995).
- [28] R.X. Saibatalov, *Gravitation Cosmol.* **7**, 293 (2001).
- [29] C. Chicone and B. Mashhoon, *Phys. Rev. D* **74**, 064019 (2006).
- [30] G.V. Skrotskii, *Sov. Phys. Dokl.* **2**, 226 (1957).
- [31] F. de Felice, *Gen. Relativ. Gravit.* **2**, 347 (1971).
- [32] V. Perlick, *Ray Optics, Fermat's Principle and Applications to General Relativity* (Springer-Verlag, Berlin, 2000).
- [33] F.W. Hehl and Y.N. Obukhov, *Foundations of Classical Electrodynamics: Charge, Flux, and Metric* (Birkhäuser, Boston, MA, 2003).
- [34] J.M. Cohen, C.V. Vishveshwara, and S.V. Dhurandhar, *J. Phys. A* **13**, 933 (1980).
- [35] W.A. Hiscock, *Phys. Rev. D* **17**, 1497 (1978).
- [36] S.N.G. Thakurta, *Phys. Rev. D* **21**, 864 (1980).
- [37] D.A. Leahy, *Int. J. Theor. Phys.* **21**, 703 (1982).
- [38] L.O. Pimentel and A. Macías, *Phys. Lett. A* **117**, 325 (1986).
- [39] L.O. Pimentel, A. Camacho, and A. Macías, *Mod. Phys. Lett. A* **9**, 3703 (1994).
- [40] M.J. Rebouças and J. Tiomno, *Phys. Rev. D* **28**, 1251 (1983).
- [41] Y.N. Obukhov and V.A. Korotky, *Classical Quantum Gravity* **4**, 1633 (1987).
- [42] V.A. Korotky and Y.N. Obukhov, *Sov. Phys. JETP* **72**, 11 (1991).
- [43] Y.N. Obukhov, in *Colloquium on Cosmic Rotation, Berlin, 1998*, edited by M. Scherfner, T. Chrobok, and M. Shefaat (Wissenschaft und Technik Verlag, Berlin, 2000), p. 23; [arXiv:astro-ph/0008106](https://arxiv.org/abs/astro-ph/0008106).
- [44] K. Dunn, *Gen. Relativ. Gravit.* **21**, 137 (1989).
- [45] P. Marecki, [arXiv:gr-qc/0703018](https://arxiv.org/abs/gr-qc/0703018).
- [46] R.A. Konoplya and A. Zhidenko, [arXiv:1110.2015](https://arxiv.org/abs/1110.2015).
- [47] A.F.F. Teixeira, M.J. Rebouças, and J.E. Áman, *Phys. Rev. D* **32**, 3309 (1985).
- [48] M.J. Rebouças and J.E. Áman, *J. Math. Phys. (N.Y.)* **28**, 888 (1987).
- [49] B. Mashhoon, *Phys. Lett.* **122A**, 299 (1987).
- [50] C. Chicone and B. Mashhoon, *Classical Quantum Gravity* **19**, 4231 (2002).
- [51] S. Chandrasekhar, *The Mathematical Theory of Black Holes* (Oxford University Press, Oxford, 1983).