

Two-photon decays of hadronic moleculesC. Hanhart,¹ Yu. S. Kalashnikova,² A. E. Kudryavtsev,² and A. V. Nefediev²¹*Institut für Kernphysik, Forschungszentrum Jülich GmbH, D-52425 Jülich, Germany*²*Institute of Theoretical and Experimental Physics, 117218, B. Chermushkinskaya 25, Moscow, Russia*
(Received 6 February 2007; published 18 April 2007)

In many calculations of the two-photon decay of hadronic molecules, the decay matrix element is estimated using the wave function at the origin prescription, in analogy to the two-photon decay of parapositronium. We question the applicability of this procedure to the two-photon decay of hadronic molecules for it introduces an uncontrolled model dependence into the calculation. As an alternative approach, we propose an explicit evaluation of the hadron loop. For shallow bound states, this can be done as an expansion in powers of the range of the molecule binding force $1/\beta$. In the leading order one gets the well-known pointlike limit answer. We estimate, in a self-consistent and gauge-invariant way, the leading range corrections for the two-photon decay width of weakly bound hadronic molecules emerging from kaon loops. We find them to be small, of order $\mathcal{O}(m\varepsilon/\beta^2)$, where m and ε denote the mass of the constituents and the binding energy, respectively. The role of possible short-ranged operators and of the width of the scalars remains to be investigated.

DOI: [10.1103/PhysRevD.75.074015](https://doi.org/10.1103/PhysRevD.75.074015)

PACS numbers: 13.60.Le, 13.75.-n, 14.40.Cs

I. INTRODUCTION

Hadronic molecules are bound states of two hadrons held together by the strong interaction—clearly to be distinguished from the so-called hadronic atoms, where the two hadrons are bound by the Coulomb interaction. In the latter case the strong interaction only leads to a slight shift in the binding energies (and an additional width). Hadronic atoms can nowadays be produced in laboratories almost routinely. Hadronic molecules, on the other hand, might well be part of the hadron spectrum but are not yet identified unambiguously. In recent years evidence has grown that a few of the large number of known scalar mesons might be of molecular character. For recent reviews on the meson spectrum, with emphasis on the heavy states, see Refs. [1–3].

It was argued for many years that the studies of the two-photon decay of scalars could distinguish among different scenarios for scalar meson structure. One of the most studied cases is that of the light scalar mesons $a_0(980)$ and $f_0(980)$ and indeed, the predictions of various models for these differ drastically. Assuming them to be $q\bar{q}$ states made of light quarks, one gets about 1.3 to 1.8 keV for the $f_0(980) \rightarrow \gamma\gamma$ width in the relativistic quark model [4], while, under the $s\bar{s}$ assumption, the two-photon width of the $f_0(980)$ is calculated to be about $0.3 \div 0.5$ keV [5]. Within the molecular model for scalars, the predictions vary from 0.2 keV in Ref. [6]¹ to 0.6 keV in Ref. [9] and to 6 keV in Ref. [10]. In the present paper we demonstrate that the technique used in Refs. [9,10] has a large theoretical uncertainty. We also show that a gauge-invariant treatment

of the two-photon decay amplitude of the $K\bar{K}$ molecule yields the value of the $\gamma\gamma$ width for the $f_0(980)$ close to 0.2 keV.

It is well known since long ago that the two-photon decay rate for the parapositronium is very well approximated by the product of the square of the wave function at the origin times the e^+e^- annihilation rate at rest [11,12]. This was taken as a recipe by many authors and was applied also to calculate the two-photon decay rates of hadronic molecules [9,10]. In this paper we argue that this procedure leads to wrong results. Instead we propose to calculate explicitly the hadron loops employing an expansion in the range of forces, $1/\beta$. Then the leading term assumes a pointlike molecule vertex and the two-photon decay of a scalar meson is found to be

$$\Gamma_{\gamma\gamma} = \zeta^2 \left(\frac{\alpha}{\pi}\right)^2 \sqrt{m\varepsilon} \left(\frac{2m}{m_S}\right) \left[\left(\frac{2m}{m_S}\right)^2 \arcsin^2\left(\frac{m_S}{2m}\right) - 1 \right]^2, \quad (1)$$

$$m_S = 2m - \varepsilon,$$

where m_S is the scalar meson mass, ε denotes the binding energy of the hadronic molecule, and m the mass of the constituents—for simplicity we only study systems with constituents of equal mass—and $\alpha = e^2/4\pi$ denotes the fine-structure constant. The factor ζ is different from 1, if not all constituents participate in the decay. For example, in case of the f_0 only the charged kaons couple to the photons in leading order and therefore $\zeta^2 = 1/2$. We also calculate the leading range corrections to the two-photon decay rate. They turned out to be suppressed by a factor $m\varepsilon/\beta^2 \ll 1$, since we focus on shallow bound states.

The paper is organized as follows: in the next section we present some very general arguments, why the wave function at the origin cannot be used to calculate the decay of hadronic molecules. This will be demonstrated explicitly in the subsequent sections: in Sec. III we give the general

¹In this paper the chiral unitary approach is used. That the scalars produced are to be interpreted as dynamically generated is shown in Ref. [7]. For a somewhat different view on this subject see Ref. [8].

formulae for the two-photon decay of bound states that allow us to investigate two limits: the weak coupling limit—that leads to the wave function at the origin prescription—is discussed in subsection III A and the limit of the pointlike interactions in subsection III B. In Sec. IV the leading range corrections to the latter limit are calculated. We close with a summary and outlook.

II. THE RELEVANT SCALES

Before we go into details let us present some general arguments why the wave function at the origin should not be used to calculate the two-photon decay of hadronic molecules. The most obvious argument is that we simply do not know the wave function at the origin. In contrast to the parapositronium decay, the equations solved for hadronic molecules are not solved using the fundamental degrees of freedom. Instead one typically works with conveniently chosen interpolating fields—and this choice influences the short-range behavior of the molecule wave function. For the deuteron wave function this is to some extent discussed in Ref. [13]. Only the tail of the wave function is completely determined by the binding energy and is therefore known model independently. Our ignorance about the wave function at the origin translates into a large spread for predictions for the corresponding two-photon decay rate of, say, the light scalar mesons, from 0.6 keV in Ref. [9] to 6 keV in Ref. [10].²

The second argument is that any transition matrix element using the wave function at the origin meets certain problems with gauge invariance. In the case of positronium this is a minor effect, since the violations are suppressed by at least one extra power in the fine-structure constant α . In the case of hadronic molecules, however, this violation might well be more severe. This will be discussed in some detail below.

The third argument is that the hierarchy of scales in the case of the decay of hadronic molecules is very different to that of positronium decay. The individual parts of the decay are illustrated in Fig. 1. First of all there is the molecule vertex Γ for the decay of the molecule into its constituents—here two mesons.³ Next come the two meson propagators. The final piece is the annihilation potential A , given by the photon-meson vertices and the intermediate meson propagator. Corresponding to the building blocks there are three scales relevant for the two-photon decay of the bound state. To begin with, there is the intrinsic scale r_Γ of the vertex function Γ set by the dynamics of the bound-state formation. An additional scale $r_\varepsilon \sim 1/\kappa$ appears due to the

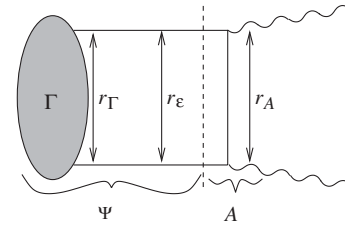


FIG. 1. Illustration of the different parts relevant for the decay of a hadronic molecule into two photons. The vertex for the transition of the molecule into its constituents is denoted by Γ , the corresponding wave function by Ψ , and the annihilation potential by A . Solid and wavy lines denote the propagation of the constituents of the molecule and of the photons, respectively.

presence of the bound state, where we defined the binding momentum $\kappa = \sqrt{m\varepsilon}$, m is the mass of the molecular constituents. The third scale is given by the range of the annihilation potential. For a shallow bound state, the energy carried away by the individual photons is of the order of m . Consequently, the range of the annihilation is given by $r_A = 1/m$.

Let us consider parapositronium decay from the point of view of the hierarchy of the scales introduced above. We clearly deal with a nonrelativistic system with the binding energy $\varepsilon = \alpha^2 m_e/4$, with m_e denoting the electron mass. Note, it is the parameter $\kappa = \sqrt{m_e\varepsilon} = \alpha m_e/2$ that defines the long-range piece of the molecular wave function, which takes the form $\Psi(r) = \sqrt{\kappa^3/\pi} \exp(-\kappa r)$. The vertex function depends only on the electron three-momentum \vec{p} and is trivially related to the bound-state wave function [15]:

$$\Gamma(\vec{p}) = \sqrt{2m_S}(\vec{p}^2 + \kappa^2)\psi(\vec{p}), \quad (2)$$

with m_S being the positronium mass. We denote wave functions in coordinate space by Ψ and their Fourier-transforms in momentum space by ψ . An explicit calculation with the positronium wave function yields

$$\Gamma(\vec{p}) \propto \frac{1}{\vec{p}^2 + \kappa^2}, \quad (3)$$

so that $r_\Gamma \sim 1/\kappa$ in the positronium case. Finally, as discussed above, we have $r_A \sim 1/m_e$. Therefore there is the hierarchy of scales

$$\text{case A: } r_A \ll r_\varepsilon \approx r_\Gamma. \quad (4)$$

Thus, in the case of the decay of positronium, the annihilation process is well approximated as taking place at the origin and consequently the decay amplitude scales to an excellent approximation with the wave function at the origin.

Quite an opposite situation takes place for molecular hadronic systems. Indeed, in this case the scale of the vertex function is defined by the range of binding forces $1/\beta$. If one deals with a loosely bound state formed by

²Also the recent attempt to improve on the wave function at the origin formula presented in Ref. [14] is not a solution, for it suffers from the same ignorance and, in addition, leads to a violation of gauge invariance, as explained below.

³For simplicity we talk of mesons only for the constituents. Note that the reasoning does not need to be changed in the presence of fermions.

zero-radius forces ($\beta \rightarrow \infty$) the hierarchy is

$$\text{case B: } r_\Gamma \ll r_A \ll r_\varepsilon. \quad (5)$$

Then annihilation process cannot be described with the wave function at the origin prescription.

To see which case (case A or case B) is more adequate for hadronic molecules let us focus on the two-photon decay of the $f_0(980)$ as a kaon molecule. Then we have $\beta \sim m_\rho$, where m_ρ is the mass of the ρ -meson, the lightest meson participating in the meson exchange between kaons (there is no one-pion exchange between two pseudoscalars), $\varepsilon < 0.1m$, and, again, $r_A \sim 1/m$. This leads to

$$r_\Gamma < r_A \ll r_\varepsilon. \quad (6)$$

Comparing this to Eqs. (4) clearly shows that the decay of hadronic molecules calls for a very different treatment as compared to that for the decay of positronium. The question arises if it is at all possible to give a simple recipe to calculate such a two-photon decay of, say, the f_0 . In this paper we argue that the corresponding decay amplitude is well approximated by a kaon-loop integral evaluated in the limit of a pointlike decay vertex ($\beta \rightarrow \infty$). We thus propose to work in the limit (5), as the zeroth approximation, and build finite-range corrections in powers of $1/\beta$ to the leading term. Naively one would expect such corrections of order of $(m/\beta)^2$ which, in the case of the f_0 , turn out to be of the order of 40%. However, an explicit calculation presented below shows that the leading range corrections in $1/\beta$ only scale as $(\kappa/\beta)^2$ which, in the case of the f_0 , turns out to be of the order of 1%. Therefore, in the case of the f_0 the corrections to the pointlike formula, Eq. (1), are expected to be at most of order $(m/\beta)^4 \sim 15\%$.

III. BETHE-SALPETER APPROACH

In this section we employ an explicitly gauge-invariant approach based on the Bethe-Salpeter equation for the molecule vertex in order to illustrate in more detail the interplay of the various scales. For scattering amplitudes similar formalisms were discussed in Refs. [16–18]. The relevant equations in the two limiting cases A and B introduced above will appear as special cases of these general equations.

Consider a Lorentz-covariant theory describing the meson-meson interaction via a potential $V(p-k)$ which possesses the inverse interaction range β . *A priori* no

assumption needs to be made on the structure of V , however, to keep the expressions simple in this very general discussion we assume that there is no charge flow in the potential. As a consequence there will be no meson exchange currents, when we include photons. This situation is naturally realized for potentials given by t -channel exchanges of neutral particles. This gives rise to the so-called ladder approximation for the scattering equation that we will refer to in the following for simplicity.

In practice the just described restriction on the potential implies the omission of many diagrams without *a priori* justification. However, the goal of this section is to demonstrate that in gauge-invariant approaches self-energies get linked to scattering potentials. We will not draw any quantitative conclusions from the considerations in this section. In contrast to this, when we discuss the leading finite-range corrections in Sec. IV as well as Appendix E we do not need to make any additional assumptions and—to this order in the range of forces—the problem is solved exactly. The effect of charge exchange is explained in Appendix E.

Scattering of two mesons can be described by the equation (see Fig. 2)

$$T(p, q, P) = V(p - q) - i \int \frac{d^4k}{(2\pi)^4} S(k)S(k - P)V(p - k) \times T(k, q, P), \quad (7)$$

where P_μ is the total momentum of the bound state and p_μ is the four-momentum of one of its constituents. The propagators given are solutions of the Dyson equation, presented in the graphical form in Fig. 3—if we again assume V to refer to the emission and absorption of a neutral meson, we here work in the rainbow approximation

$$S^{-1}(p) = S_0^{-1}(p) - \Sigma(p), \quad S_0(p) = \frac{1}{p^2 - m_0^2}, \quad (8)$$

$$\Sigma(p) = -i \int \frac{d^4k}{(2\pi)^4} S(k)V(p - k),$$

with m_0 being the bare meson mass. The physical meson mass m appears as the pole of the dressed propagator $S(p)$.

If there exists a bound state with the mass m_s , we may define the corresponding vertex function $\Gamma(p, P)$ as the solution of a homogeneous Bethe-Salpeter equation

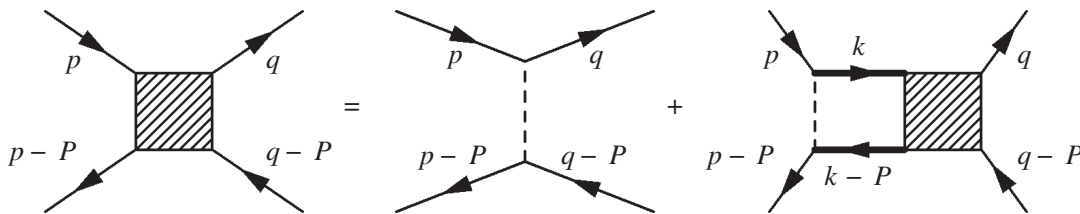


FIG. 2. Graphical representation of Eq. (7) for the full meson-meson scattering amplitude.

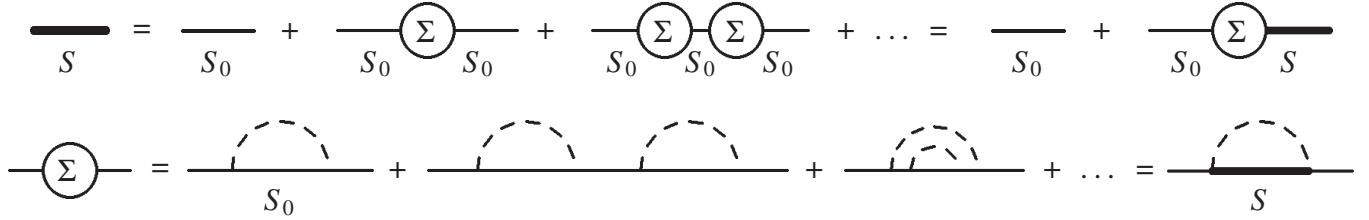


FIG. 3. Graphical representation of the Dyson equations for the dressed meson propagator and for the meson self-energy, Eq. (8).

$$\Gamma(p, P) = -i \int \frac{d^4 k}{(2\pi)^4} S(k) S(k-P) V(p-k) \Gamma(k, P), \quad (9)$$

which is to be evaluated at $P^2 = m_s^2$. The bound-state vertex is normalized through the condition [19]

$$-i \int \frac{d^4 k}{(2\pi)^4} \Gamma^2(k, P) \frac{\partial}{\partial P_\mu} S(k) S(k-P) = 2P_\mu, \quad (10)$$

which relates the vertex $\Gamma(p, P)$ to the bound-state mass.

To describe radiative processes one should first define the dressed photon emission vertex for a meson. In the absence of charge flow in the potential V this is (see Fig. 4)

$$\begin{aligned} v_\mu(p, q) &= v_\mu^{(0)}(p, q) - i \int \frac{d^4 k}{(2\pi)^4} T(p, k, q) S(k) S(k-q) \\ &\quad \times v_\mu^{(0)}(k, q) \\ &= v_\mu^{(0)}(p, q) - i \int \frac{d^4 k}{(2\pi)^4} V(p-k) S(k) S(k-q) \\ &\quad \times v_\mu(k, q), \end{aligned} \quad (11)$$

where

$$v_\mu^{(0)}(p, q) = (2p - q)_\mu \quad (12)$$

and q_μ and p_μ are the emitted photon and the emitting meson momenta, respectively. As follows from Eqs. (7) and (11), the dressed vertex $v_\mu(p, q)$ obeys the Ward identity,

$$q_\mu v^\mu(p, q) = S^{-1}(p) - S^{-1}(p - q). \quad (13)$$

The two-photon decay amplitude for the bound state can now be evaluated with the help of the diagrams depicted in Fig. 5 and with the dressed vertices and propagators involved (notice that the seagull vertex in Fig. 5(c) need not be dressed since, due to the Bethe-Salpeter Eq. (9), the corresponding diagrams are already included into the definition of the scalar vertex). The resulting transition matrix element is

$$W = \varepsilon_{1\mu}^* \varepsilon_{2\nu}^* W^{\mu\nu}, \quad (14)$$

where

$$\begin{aligned} W_{\mu\nu} &= e^2 \int \frac{d^4 k}{(2\pi)^4} \Gamma(k, P) v_\mu(k, q_1) v_\nu(k - q_1, q_2) S(k - q_1) S(k - P) S(k) + e^2 \int \frac{d^4 k}{(2\pi)^4} \Gamma(k, P) v_\nu(k, q_2) v_\mu(k - q_2, q_1) \\ &\quad \times S(k - q_2) S(k - P) S(k) - 2g_{\mu\nu} e^2 \int \frac{d^4 k}{(2\pi)^4} \Gamma(k, P) S(k - P) S(k), \end{aligned} \quad (15)$$

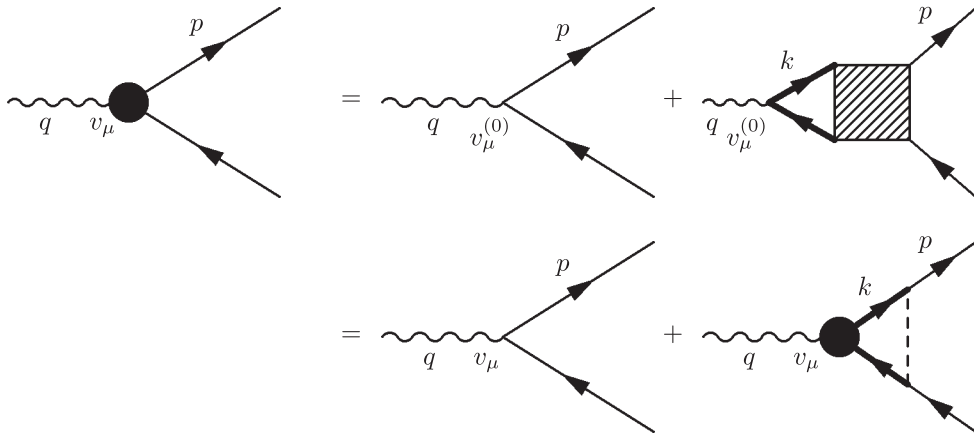


FIG. 4. Graphical representation of Eq. (11) for the dressed photon emission vertex.

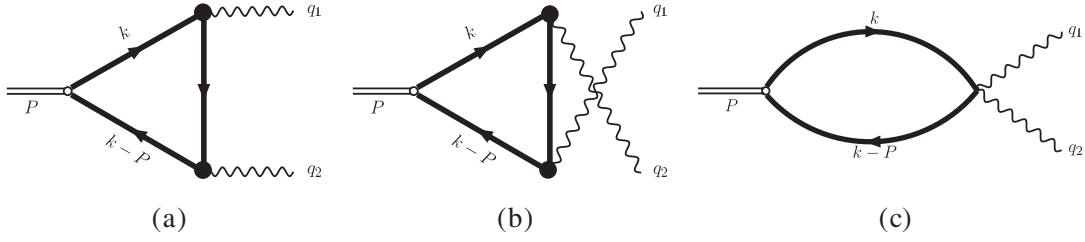


FIG. 5. Diagrams contributing to the scalar decay amplitude.

with $q_{1,2}$ and $\epsilon_{1,2}^*$ being the four-momenta and the polarization vectors of the two photons. The quantity $W^{\mu\nu}$ appears to be gauge invariant,

$$W^{\mu\nu} q_{1\mu} = W^{\mu\nu} q_{2\nu} = 0. \quad (16)$$

To show this one may use the Ward identity, Eq. (13), to write

$$\begin{aligned} W_{\mu\nu} q_1^\mu &= e^2 \int \frac{d^4 k}{(2\pi)^4} \Gamma(k, P) S(k-P) S(k-q_1) v_\nu(k-q_1, q_2) - e^2 \int \frac{d^4 k}{(2\pi)^4} \Gamma(k, P) S(k) S(k-P) v_\nu(k-q_1, q_2) \\ &+ e^2 \int \frac{d^4 k}{(2\pi)^4} \Gamma(k, P) S(k) S(k-P) v_\nu(k, q_2) - e^2 \int \frac{d^4 k}{(2\pi)^4} \Gamma(k, P) S(k) S(k-q_2) v_\nu(k, q_2) \\ &- 2q_{1\nu} \int \frac{d^4 k}{(2\pi)^4} \Gamma(k, P) S(k) S(k-P). \end{aligned} \quad (17)$$

Now, using the bound-state equation for $\Gamma(k, P)$ and the second line of Eqs. (11) one may write

$$\int \frac{d^4 k}{(2\pi)^4} \Gamma(k, P) S(k-P) S(k-q_1) v_\nu(k-q_1, q_2) = \int \frac{d^4 l}{(2\pi)^4} \Gamma(l, P) S(l-P) S(l) (v_\nu(l-q_1, q_2) - v_\nu^{(0)}(l-q_1, q_2)). \quad (18)$$

The same manipulations applied to the fourth line of Eq. (17) lead to Eq. (16).

We therefore see that it is necessary that the vertex function Γ and the photon-meson vertices are constructed consistently in order to get gauge-invariant amplitudes. In other words, using in the expression for the decay amplitude the molecule wave function together with bare vertices and propagators, inevitably leads to the violation of gauge invariance.

For the decay $S \rightarrow \gamma\gamma$ involving real photons, Eqs. (16) imply that

$$\begin{aligned} iW &= M(P^2) [q_1^\nu q_2^\mu - g^{\mu\nu} (q_1 q_2)] \epsilon_{1\mu}^* \epsilon_{2\nu}^*, \\ P &= q_1 + q_2. \end{aligned} \quad (19)$$

Then, for the scalar of the mass m_S , the total width of such a decay can be evaluated as

$$\Gamma_{\gamma\gamma} = \frac{m_S^3}{64\pi} |M(m_S^2)|^2, \quad (20)$$

where the identity of the photons in the final state is taken into account in the overall coefficient in Eq. (20).

Equation (15) is still general (up to the absence of exchange currents) and we may study it in both limits: case A (Eq. (4)) as well as case B (Eq. (5)). Note, in order to simplify Eq. (15) we need to assume the coupling to be weak. In a situation, where case A holds for strong couplings, the full system of coupled equations needs to be solved. In the next subsections both limits are discussed individually.

A. Case A in the weak coupling limit

In case A, $r_\Gamma \gg r_A$. As we shall see, the decay width in this limit can be derived from the general expression of Eq. (15) under the assumption of weak coupling. Then one may neglect the dressing effects and self-energies altogether—in Eq. (15) all propagators and vertices can be replaced by the bare ones. As outlined above, this necessarily implies a certain violation of gauge invariance, however, those violations are suppressed by at least one power in the coupling that is assumed to be small. In the limit considered, the typical momentum in the loop is very small and one may replace k_0 in the photon vertices as well as in the strong vertex Γ by m . Then one may write in the

rest frame of the scalar ($P^\mu = (2m - \varepsilon, \vec{0})$):

$$\begin{aligned} & -i \int \frac{dk_0}{2\pi} S(k)S(k-P) \approx \frac{1}{4m} \frac{1}{\vec{k}^2 + \kappa^2}, \\ & -i \int \frac{dk_0}{2\pi} S(k-q_1)S(k-P)S(k) \\ & \approx S(k-q_1)|_{k^0=q_1^0} \left(-i \int \frac{dk_0}{2\pi} S(k)S(k-P) \right), \end{aligned} \quad (21)$$

where only the leading pole is kept and nonrelativistic kinematics is used for the mesons with momentum \vec{k} . A similar expression appears for $q_1 \leftrightarrow q_2$. What remains to be evaluated now is the three-dimensional integral

$$\begin{aligned} W_{\mu\nu} = & -\zeta e^2 \sqrt{\frac{2}{m}} \int \frac{d^3k}{(2\pi)^3} \psi(\vec{k}) \\ & \times \left(\frac{(2\vec{k} - q_1)_\mu (2\vec{k} - P - q_1)_\nu}{m^2 + (\vec{k} - \vec{q}_1)^2} \right. \\ & \left. + (\mu \leftrightarrow \nu, q_1 \leftrightarrow q_2) + 2g_{\mu\nu} \right), \end{aligned} \quad (22)$$

where we used the relation (2) and defined $\vec{k}^\mu = (m, \vec{k})$. The term in parenthesis refers to the annihilation potential. By assumption we have $r_A \ll r_I$ which translates into $\vec{k} \ll \vec{q}_{1,2}$. Under this condition one may neglect all \vec{k} dependence in this term, which then reduces to the annihilation potential at rest, and pull it out of the integral. The remaining integral is nothing but the definition of the wave function at the origin (in coordinate space). These altogether yield the gauge-invariant answer (19) for the amplitude, with

$$M(P^2) = i\zeta e^2 \frac{\Psi(0)}{m^{5/2}}. \quad (23)$$

Thus one arrives at the following expression for the two-photon decay width for the limiting case A,

$$\Gamma_{\gamma\gamma}^A = 2\zeta^2 \frac{\pi\alpha^2}{m^2} |\Psi(0)|^2. \quad (24)$$

Note that the final answer is gauge invariant, but this is true only for the leading term in an expansion in the potential V for the transition matrix elements. As explained, if one wants to improve the accuracy of Eq. (24) it is insufficient to just keep the momentum dependence in Eq. (22), as proposed in Ref. [14], but also the meson self-energies are to be kept explicitly. Consequently, Eq. (24) should only be applied in the weak coupling limit.

There exists a prescription to calculate the two-photon decay amplitude by contracting the on-shell decay amplitude with the bound-state wave function $\psi(\vec{k})$ (see, e.g. [20]):

$$W \propto \int \frac{d^3k}{(2\pi)^3} \psi(\vec{k}) [W(K^+(\vec{k})K^-(\vec{k}) \rightarrow \gamma\gamma)]. \quad (25)$$

Since gauge invariance is preserved for the on-shell amplitude $W(K^+(\vec{k})K^-(\vec{k}) \rightarrow \gamma\gamma)$, then the full amplitude (25) proves to be gauge invariant automatically. In the leading nonrelativistic approximation the \vec{k} dependence of W can be neglected, so that Eq. (25) is identical to Eq. (24). However, in general Eq. (25) violates energy conservation: in the center-of-mass (c.m.) frame the use of the on-shell amplitude in Eq. (25) implies that the kaon energies $k_{10} = k_{20} = \sqrt{\vec{k}^2 + m^2}$, while energy conservation requires $k_{10} = k_{20} = m_S/2$. This problem is discussed in detail in Ref. [21].

Simple recipes to restore gauge invariance in the presence of nontrivial vertex functions through new contact diagrams with the derivatives of this vertex, successfully used for decays like $\phi \rightarrow \gamma f_0$ [15], fail, since the photons are not soft. As a result, gauge invariance, preserved in the pointlike limit, appears broken already to order $(m/\beta)^2 \sim 0.4$ (see Appendix C for the details), where we used for illustration with $m = m_K$ and $\beta = m_\rho$ the parameters relevant for the f_0 . In the previous section we showed that the inclusion of the scalar vertex structure in a gauge-invariant way requires an accurate consideration of the dressed meson propagators and photon emission vertices.

As stressed before, the approximations necessary to come to the wave function at the origin prescription in the case of the positronium decay were justified, since only terms of higher orders in α need to be neglected (such corrections can be taken into account systematically, see [22]). In a strongly interacting system, where the couplings are typically of order unity or larger, these steps are not justified: they lead to uncontrolled results and potentially large violations of gauge invariance.

B. Case B: The zero-radius interaction limit

We now study the other limiting situation, case B (Eq. (5)). In this limit we may assume the vertex function to be pointlike ($\beta \rightarrow \infty$), which leads to a constant vertex function $\Gamma(p, P) \equiv g_{S0}$ for, say, the decay of the f_0 into kaons. Then all dressing effects can be absorbed in coupling constants and masses and thus bare (in form) vertices and propagators may be used (but for different reasons as compared to the previous subsection).

Then the matrix element (19) can be found from the set of diagrams depicted in Fig. 5,

$$\begin{aligned}
W_a &= \zeta g_{S0} e^2 \int \frac{d^4 k}{(2\pi)^4} \\
&\quad \times \frac{\epsilon_1^* \cdot (2k - q_1) \epsilon_2^* \cdot (2k - P - q_1)}{((k - q_1)^2 - m^2)((k - P)^2 - m^2)(k^2 - m^2)}, \\
W_b &= W_a(1 \leftrightarrow 2), \\
W_c &= -2\zeta g_{S0} e^2 (\epsilon_1^* \cdot \epsilon_2^*) \int \frac{d^4 k}{(2\pi)^4} \\
&\quad \times \frac{1}{((k - P)^2 - m^2)(k^2 - m^2)},
\end{aligned} \tag{26}$$

where m , as before, denotes the meson mass.

The two-photon decay of scalars can be viewed as a particular case of a more general situation of the $S \rightarrow V\gamma$ decays, studied in detail in Ref. [23], with the vector particle V also taken to be a photon. The details of the calculations are well known, and can be found, e.g., in Refs. [24–28]. Notice that, although all integrals in Eq. (26) are logarithmically divergent, the sum $W_a + W_b + W_c$ is finite.⁴ Thus, adding these three yields for the amplitude M introduced in Eq. (19):

$$M(P^2) = -\zeta \frac{g_{S0} e^2}{2\pi^2 m^2} I(b), \tag{27}$$

with $I(b)$ being the loop integral function, $I(b) \equiv I(a = 0, b)$ (see, for example, Refs. [24,28] for the definition of $I(a, b)$), where $b = m_S^2/m^2$,

$$I(b) = \int_0^1 dz \int_0^{1-z} dy \frac{yz}{1 - byz}. \tag{28}$$

The analytic expression for $I(b)$ takes the form:

$$I(b) = \begin{cases} -\frac{1}{2b} + \frac{2}{b^2} [\arcsin \frac{\sqrt{b}}{2}]^2, & b < 4 \\ -\frac{1}{2b} - \frac{1}{2b^2} [\ln \frac{\sqrt{b} + \sqrt{b-4}}{\sqrt{b} - \sqrt{b-4}} - i\pi]^2, & b > 4. \end{cases} \tag{29}$$

Finally, using Eqs. (20) and (27) together, one arrives at the decay width

$$\Gamma_{\gamma\gamma}^B = \zeta^2 \frac{g_{S0}^2 \alpha^2 m_S^3}{16\pi^3 m^4} \left| I\left(\frac{m_S^2}{m^2}\right) \right|^2, \tag{30}$$

with the only unknown parameter being the coupling constant g_{S0} . For a loosely bound system with $P^2 = (2m - \varepsilon)^2 \approx 4m(m - \varepsilon)$, $\varepsilon \ll m$, the condition (10) gives the relation between the coupling constant g_{S0} and the molecule binding energy ε [15],

$$\frac{g_{S0}^2}{4\pi} = 32m\sqrt{m\varepsilon}. \tag{31}$$

Inserting Eq. (31) into Eq. (30) gives Eq. (1).

⁴An elegant way of extracting the amplitude M , Eq. (27), by reading off a finite coefficient at a specific combination of the four-momenta in W_a was suggested in Ref. [28]. The problem of convergence of the integrals (26) was also studied in detail in Refs. [15,24,29]

For $m_S = 980$ MeV and $m = 495$ MeV, which translates to $\varepsilon = 10$ MeV, one arrives at the prediction

$$\Gamma_{\gamma\gamma} = 0.22 \text{ keV}, \tag{32}$$

for the two-photon decay of the scalar $f_0(980)$, which we refer to as the pointlike model prediction. In the following we shall derive an estimate for the accuracy of this result.

IV. LEADING RANGE CORRECTIONS

In the previous subsection we investigated the limiting case of $\beta \rightarrow \infty$. In this chapter we derive the leading corrections that emerge from finite values of β —we shall calculate the leading corrections in $1/\beta$. This should provide a valuable insight into how accurate the formulae of the previous chapter should be expected to be.

For this we use a simple covariant model complying with the requirements of the previous chapter and thus providing a gauge-invariant description of the two-photon radiative decay of a non-pointlike molecular state.

We start from an effective meson interaction Lagrangian which is responsible for the pointlike scalar formation and supply it with an extra momentum-dependent self-interaction:

$$L_{\text{int}} = \frac{1}{2} \lambda_1 (\varphi^\dagger \varphi)^2 + \frac{\lambda_2}{2\beta^2} [\partial_\mu (\varphi^\dagger \varphi)]^2. \tag{33}$$

The form of the Lagrangian (33) is chosen such that, after inclusion of the electromagnetic (e.m.) field, it does not give rise to extra meson-photon vertices. Indeed, since the Lagrangian (33) is written completely in terms of the real field $\varphi^\dagger \varphi$, the standard substitution $\partial_\mu \rightarrow \partial_\mu - ieA_\mu$ does not touch it. As a result, the set of diagrams contributing to the molecule decay to two photons is not modified and is still exhausted with the three diagrams depicted in Fig. 5. Additional terms that arise from possible charge exchanges just lead to more complicated expressions but do not alter the conclusions. This is discussed in detail in Appendix E. The theory described by the Lagrangian (33) can be re-normalized to the given order $1/\beta^2$. We present the necessary details in Appendix A and briefly summarize the results here.

The effective meson-meson interaction given rise by the Lagrangian (33) is

$$V(p - k) = \lambda_1 + \frac{\lambda_2}{\beta^2} (p - k)^2. \tag{34}$$

Note that, in addition to the two terms given in Eq. (34) also a term that scales as $\lambda_2(s/\beta^2)$ emerges from Eq. (33), where $\sqrt{s} = E_{\text{cm}}$. However, since we shall work at the fixed $s = m_S^2$, this term can be absorbed into λ_1 . The dressed meson propagator and the dressed photon emission vertex are

$$\begin{aligned} S(p) &= \frac{Z}{p^2 - m^2}, \\ v_\mu(p, q) &= Z^{-1}(2p - q)_\mu + \tilde{v}_\mu(p, q), \end{aligned} \quad (35)$$

where the renormalization factor Z and the explicit expression for $\tilde{v}_\mu(p, q)$ are given in Appendix A. We have $\tilde{v}_\mu(p, q)q^\mu = 0$, so that the Ward identity (13) is preserved. From now on we stick to the renormalized, physical value of the mass m . Besides that, $\tilde{v}_\mu(p, q)$ does not contribute to the radiative $\gamma\gamma$ decay under consideration since $(\tilde{v}\epsilon^*)_{q^2=0} = 0$, with ϵ_μ^* being the photon polarization vector.

We turn now to the Bethe-Salpeter equation (9) for a loosely bound system. One can check that, to order m^2/β^2 and $\sqrt{\varepsilon/m}$, the Bethe-Salpeter equation (9) is satisfied with the vertex function (see Appendix A for details):

$$\Gamma(p, P) = Z^{-1}g_S \left(1 + \xi \frac{p(p-P)}{\beta^2}\right), \quad \xi = \frac{\lambda_2}{\lambda_1}, \quad (36)$$

and the normalization condition (10) gives (see Appendix B for details):

$$\frac{g_S^2}{4\pi} = 32m\sqrt{m\varepsilon} \left(1 + 2\xi \frac{m^2}{\beta^2}\right), \quad (37)$$

which, as $\beta \rightarrow \infty$, reproduces the relation (31) obtained in the limit of the zero-range interaction.

In the weak coupling limit that we focus on here, the bound-state formation should be controlled by nonrelativistic momenta. As a consequence g_{eff} , the effective coupling constant of the bound state to its constituents, should have corrections at most of the order of $m\varepsilon/\beta^2$ [30,31], for the scale m^2 does not appear in nonrelativistic equations. To recover this result we need to use Eq. (36) at the bound-state pole, $P = P_0$ with $P_0^2 = m_s^2$, and for on-mass-shell mesons, $p = p_0$ with $p_0^2 = (p_0 - P_0)^2 = m^2$, to get

$$\frac{g_{\text{eff}}^2}{4\pi} = \frac{Z^2}{4\pi} \Gamma^\dagger(p_0, P_0) \Gamma(p_0, P_0) = 32m\sqrt{m\varepsilon} \left(1 + 4\xi \frac{m\varepsilon}{\beta^2}\right), \quad (38)$$

where the factor Z^2 was put according to the rules of the Lehman-Symanzik-Zimmerman (LSZ) reduction formula. The scaling of the corrections in Eq. (38) is in line with the estimates of Refs. [15,30–32]. Here we used that, for the given kinematics, $p(p-P) = (2m^2 - m_s^2)/2$.

The general form of the matrix element is given in Eq. (19). Following the method proposed in Ref. [28] (see Appendix D for an alternative method) we notice that only the diagrams (a) and (b) in Fig. 5 give rise to the structure $q_{1\nu}q_{2\mu}$ in the transition matrix element (19). Moreover, these two diagrams give the same contribution to W , so it is sufficient to consider only one of them,

$$\begin{aligned} W_{\mu\nu}^a &= e^2 \zeta g_S \int \frac{d^4k}{(2\pi)^4} \Gamma(k, P) S(k-P) v_\nu(k-q_1, q_2) \\ &\quad \times S(k-q_1) v_\mu(k, q_1) S(k), \end{aligned} \quad (39)$$

and to read off the coefficient at the structure $q_{1\nu}q_{2\mu}$ which appears after the introduction of the Feynman parameters and shifting the integration variable [28]. Notice that in this structure the Z -factors coming from propagators, from e.m. vertices, and from the norm of the scalar vertex cancel against each other, so that

$$\begin{aligned} W_{\mu\nu}^a &= \zeta g_S e^2 \int \frac{d^4k}{(2\pi)^4} \\ &\quad \times \frac{(2k-q_1)_\mu (2k-P-q_1)_\nu (1 + \xi k(k-P)/\beta^2)}{((k-q_1)^2 - m^2)((k-P)^2 - m^2)(k^2 - m^2)}. \end{aligned} \quad (40)$$

The corresponding loop integral is finite and the result reads:

$$M(m_S^2) = M^{(0)}(m_S^2) + \xi \frac{m^2}{\beta^2} M^{(1)}(m_S^2), \quad (41)$$

where $M^{(0)}$ is given by the pointlike result, Eq. (27), whereas $M^{(1)}$ takes the form:

$$M^{(1)}(m_S^2) = -\zeta \frac{g_S e^2}{2\pi^2 m^2} \tilde{I}(b), \quad b = \frac{m_S^2}{m^2}, \quad (42)$$

with

$$\begin{aligned} \tilde{I}(b) &= \frac{1}{6} - \frac{1}{2} \int_0^1 dz \int_0^{1-z} dy \left[(y+z-8yz) \ln(1-yzb) \right. \\ &\quad \left. + \frac{1-y-z+2yz}{1-yzb} \right]. \end{aligned} \quad (43)$$

Thus, up to order $1/\beta^2$, the integrals $I(b)$ and $\tilde{I}(b)$ enter the two-photon decay amplitude in the combination $(I(b) + \tilde{I}(b))/I(b)$:

$$M = M_{\text{pointlike}} \left(1 + \xi \frac{m^2}{\beta^2} \frac{I(b) + \tilde{I}(b)}{I(b)}\right), \quad (44)$$

where the factor $1 + \xi(m^2/\beta^2)$ comes from g_S (see Eq. (37)) and $I(b) + \xi(m^2/\beta^2)\tilde{I}(b)$ appears from the decay diagrams. The integral $\tilde{I}(b)$ can be calculated analytically. The result reads:

$$\tilde{I}(b) = \left(1 - \frac{b}{2}\right) I(b). \quad (45)$$

So, for the total width, we arrive at an extremely simple formula:

$$\Gamma_{\gamma\gamma}(\beta) = \Gamma_{\gamma\gamma} \left(1 + \xi \frac{4m^2 - m_S^2}{\beta^2}\right) = \Gamma_{\gamma\gamma} \left(1 + \mathcal{O}\left(\frac{m\varepsilon}{\beta^2}\right)\right), \quad (46)$$

where $\Gamma_{\gamma\gamma}$ is given by Eqs. (1) and (32), and the corrections of order of m^2/β^2 cancel against each other. Contrary to Eq. (38), here the cancellation is unexpected and nontrivial: since the photons carry away an energy of the order of the mass m , their momenta are the same and therefore at least one of the particles in the meson loop has a typical momentum of the order of its mass. Consequently there is no justification for the use of nonrelativistic kinematics in the evaluation of the two-photon decay of scalar mesons.

Evaluation of the actual coefficient in front of the structure $(m\varepsilon)/\beta^2$ would require making assumptions concerning the details of the molecule formation which are model dependent, though, given a particular model of this type, it is straightforward to apply the technique of the present work to establish this coefficient which is expected to be of order unity (see also Appendix B).

Equation (46) is the central result of this work, for it shows that the predictions derived for the limit a pointlike interaction should be quite accurate. If one assumes the coefficient ξ also to take its natural value of order unity ($\lambda_1 \sim \lambda_2$), we find that the leading range corrections to Eq. (32) should be of the order of $m\varepsilon/\beta^2$, which translates into a few percent in the decay amplitude. Therefore the accuracy of Eq. (1) should be given by the subleading range corrections that are expected to be of the order of $(m/\beta)^4$, which is about 15% for the case of the f_0 .

Another source of uncertainty for any prediction based on Eq. (1) is our ignorance on the true binding energy. To investigate this point, in Fig. 6, the dependence of Eq. (1) on ε is shown, again using for illustration the parameters relevant for the f_0 , namely $m = m_K$. As one can see, the dependence on ε is quite moderate, once the binding energy exceeds 5 MeV. Therefore, even if ε is varied between 5 and 20 MeV around 10 MeV—the typical value used above—the predicted two-photon width changes by less than 0.05 keV.

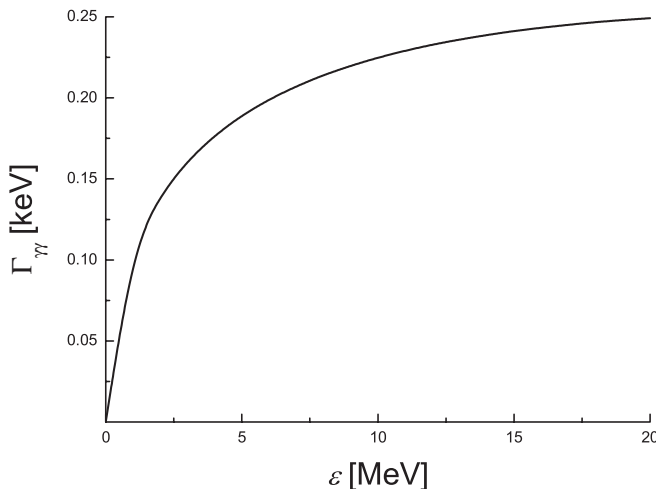


FIG. 6. Dependence of the width $\Gamma_{\gamma\gamma}$, defined in Eq. (1), on the value of the binding energy.

However, one should be aware of the following important *disclaimers*:

- (i) Most of the hadrons—including the f_0 —are unstable. Thus the concept of vertex function and binding energy is not well defined for those, and one should employ a multichannel Bethe-Salpeter formalism. The quantity that should replace the bound-state vertex $\Gamma(p, P)$ in all the formulae given above is the multichannel t -matrix. The proof of gauge invariance proceeds along the lines similar to those given in Sec. III. In the molecular case, for the energies around the $K\bar{K}$ threshold (and far away from the inelastic thresholds) the amplitude in the $K\bar{K}$ channel can be written in the scattering length approximation with the complex $K\bar{K}$ scattering length:

$$a_{K\bar{K}} = \frac{1}{\kappa_1 + i\kappa_2}, \quad \kappa_2 > 0. \quad (47)$$

In the limit $\kappa_2 \rightarrow 0$, the coupling to inelastic channels is switched off, and, for $\kappa_1 > 0$, there is a bound state in the $K\bar{K}$ channel with $\varepsilon = \kappa_1^2/m$. As shown in [33], the data on, say, $\pi\pi$ scattering near the $K\bar{K}$ threshold can be described in the scattering length approximation with κ_2 around $50 \div 100$ MeV, and the ratio κ_1/κ_2 of order unity. Thus, the hierarchy of scales in the case of unstable scalar is similar to the one considered above. The two-photon decay of an unstable scalar meson in the limit of pointlike interactions was evaluated, for example, in Ref. [34]. More systematic studies of the problem of unstable particles will be the subject of a future work.

- (ii) Another issue is the possible presence of additional short-ranged operators, for example, of the type of vector meson exchanges studied in Ref. [6]. Estimates for these and their proper inclusion in the renormalization program also go beyond the scope of the present paper and will also be the subject of a future work.

V. SUMMARY

- (1) The $\Psi(0)$ formula for slow particles annihilation does not work for the two-gamma decays of hadronic molecules. Not only are the results numerically uncontrolled, which is reflected in a wide spread of predictions for the decay $f_0 \rightarrow \gamma\gamma$ width found in the literature, but there is also a potentially large violation of gauge invariance necessarily present in the derivation of the formula.
- (2) Simple recipes to restore gauge invariance in the presence of nontrivial vertex functions through new contact diagrams with the derivatives of this vertex, successfully used for decays like $\phi \rightarrow \gamma f_0$ [15], fail, since the photons are not soft. As a result, gauge invariance, preserved in the pointlike limit, appears

broken already to order $1/\beta^2$. We showed that the inclusion of the scalar vertex structure in a gauge-invariant way requires an accurate consideration of the dressed meson propagators and photon emission vertices.

- (3) For phenomenologically adequate values of $\varepsilon = 10$ MeV and $\beta \sim 0.8$ GeV for the scalar meson $f_0(980)$ our prediction for the two-photon width is

$$\Gamma_{\gamma\gamma}^{f_0} = (0.22 \pm 0.07) \text{ keV}. \quad (48)$$

Our result compares nicely with the experimental values for the $\gamma\gamma$ width of the light scalar $f_0(980)$ [35]

$$\Gamma_{\gamma\gamma}(f_0(980)) = 0.31_{-0.11}^{+0.08} \text{ keV}, \quad (49)$$

and [36]

$$\Gamma_{\gamma\gamma}(f_0(980)) = 0.28_{-0.13}^{+0.09} \text{ keV}. \quad (50)$$

The new experimental value [37]

$$\Gamma_{\gamma\gamma}(f_0(980)) = 0.205_{-0.083}^{+0.095}(\text{stat})_{-0.117}^{+0.147}(\text{syst}) \text{ keV} \quad (51)$$

gives an even better agreement. This clearly supports the molecular assignment for the $f_0(980)$.

It has to be stressed that the uncertainty of our theoretical prediction (48) so far only includes our estimate of the possible influence of the structure of the vertex function for the scalar meson (about 15% for the amplitude). Neither was the possible influence of the finite width included nor possible additional terms from shorter ranged transitions. Both will be the subject of future investigations.

It should be emphasized that the main goal of our study was to quantify the effect of range corrections to the two-photon decay of hadronic molecules in a model-independent way. Those we identified as parametrically suppressed compared to what is expected naively. This finding should not be changed by the inclusion of inelastic channels (like $\pi\pi$ in case of the f_0). From this point of view our work is an additional justification for the use of, for example, the chiral unitary approach, for the calculation of the two-photon decay of the light scalar mesons [6]. Here scalar mesons appear as hadronic molecules based on pointlike interactions. On the other hand, in Ref. [6] the $\pi\pi$ channel is included in a coupled channel framework. It is also reassuring that the width calculated in this reference is consistent with our result, Eq. (48).

ACKNOWLEDGMENTS

This research was supported by the Federal Agency for Atomic Energy of Russian Federation, by the grants No. RFFI-05-02-04012-NNIOa, No. DFG-436 RUS 113/820/0-1(R), No. NSh-843.2006.2, and No. NSh-5603.2006.2, by the Federal Programme of the Russian

Ministry of Industry, Science, and Technology No. 40.052.1.1.1112, and by the Russian Governmental Agreement No. N 02.434.11.7091. A. N. is also supported through the project No. PTDC/FIS/70843/2006-Fisica.

APPENDIX A: RENORMALIZATION OF THE MODEL AND THE BETHE-SALPETER EQUATION

To renormalize the theory (33) to the given order $1/\beta^2$ we start from the interaction Lagrangian

$$L_{\text{int}} = \frac{1}{2} \lambda_1 (\varphi^\dagger \varphi)^2 + \frac{\lambda_2}{2\beta^2} [\partial_\mu (\varphi^\dagger \varphi)]^2. \quad (A1)$$

We consider the meson mass operator then,

$$\Sigma(p) = -i \int \frac{d^4 k}{(2\pi)^4} S(k) V(p-k), \quad (A2)$$

and use the dimensional regularization scheme to make it finite. It is easy to see that $\Sigma(p)$ can be written in the form

$$\Sigma(p) = (1 - Z^{-1})p^2 + \delta m^2, \quad (A3)$$

where

$$Z = 1 + \frac{\lambda_2 m^2}{(4\pi)^2 \beta^2} (\Lambda + 1), \quad \Lambda = \frac{2}{\varepsilon} - \gamma_E + \ln \frac{4\pi\mu^2}{m^2}, \quad (A4)$$

with $D = 4 - \varepsilon$ being the number of dimensions, μ and $\gamma_E \approx 0.577$ being an auxiliary mass parameter and the Euler constant, respectively. The physical meson mass is simply $m^2 = Z(m_0^2 + \delta m^2)$, and the meson propagator takes the form given in Eq. (35). It is also straightforward to evaluate, to the same order $1/\beta^2$ and in the same regularization scheme, the photon emission vertex,

$$v_\mu(p, q) = (2p - q)_\mu - i \int \frac{d^4 k}{(2\pi)^4} V(p-k) S(k) S(k-q) \times (2k - q)_\mu, \quad (A5)$$

to arrive at

$$v_\mu(p, q) = Z^{-1}(2p - q)_\mu + \tilde{v}_\mu(p, q), \quad (A6)$$

where

$$\tilde{v}_\mu(p, q) = \frac{\lambda_2}{12\pi\beta^2} \left[\frac{\Lambda}{3} + \frac{1}{6} - \frac{4m^2 - q^2}{q^2} + \left(\frac{4m^2 - q^2}{q^2} \right)^{3/2} \times \arctan \sqrt{\frac{q^2}{4m^2 - q^2}} \right] [q^2 p_\mu - (pq)q_\mu], \quad (A7)$$

with the renormalization factor Z given in Eq. (A4). This agrees with Eq. (35).

Now, before we come to the Bethe-Salpeter equation, we introduce two auxiliary integrals,

$$I_0(P) = -i \int \frac{d^4k}{(2\pi)^4} \frac{1}{(k^2 - m^2)((k - P)^2 - m^2)}, \quad (\text{A8})$$

$$I_2(P) = -i \int \frac{d^4k}{(2\pi)^4} \frac{k^2}{(k^2 - m^2)((k - P)^2 - m^2)},$$

which are divergent and, in the dimensional regularization scheme, take the form:

$$I_0(P) = \frac{1}{(4\pi)^2} \Lambda + I_{0R}(P),$$

$$I_2(P) = \frac{2m^2}{(4\pi)^2} \Lambda + I_{2R}(P), \quad (\text{A9})$$

where I_{0R} and I_{2R} are finite.

The Bethe-Salpeter equation is

$$\Gamma(p, P) = -i \int \frac{d^4k}{(2\pi)^4} \Gamma(k, P) S(k) S(k - P) \times \left(\lambda_1 + \frac{\lambda_2}{\beta^2} (p - k)^2 \right), \quad (\text{A10})$$

where dressed kaon propagators should be used. In the leading order in $1/\beta^2$ the scalar vertex can be found in the form:

$$\Gamma(p, P) = g_1 + \frac{g_2}{\beta^2} p(p - P), \quad (\text{A11})$$

with the coefficients g_1 and g_2 satisfying the equations:

$$g_1 = \lambda_1 g_1 I_0(P) + 2 \frac{\lambda_1 \lambda_2 g_1}{\beta^2} I_0(P) \frac{m^2}{(4\pi)^2} (\Lambda + 1) + \frac{\lambda_1 g_2}{\beta^2} I_2(P) - \frac{\lambda_1 g_2 P^2}{2\beta^2} I_0(P) + \frac{\lambda_2 g_1}{\beta^2} I_2(P), \quad (\text{A12})$$

$$g_2 = \lambda_2 g_1 I_0(P). \quad (\text{A13})$$

These yield the equation which defines the mass M of the bound state as ($P^2 = M^2$)

$$1 - \lambda_1 I_0(P) - \frac{\lambda_2}{\beta^2} \left[\lambda_1 I_0(P) \frac{2m^2}{(4\pi)^2} (\Lambda + 1) + \lambda_1 I_0(P) I_2(P) - \frac{1}{2} P^2 \lambda_1 I_0^2(P) + I_2(P) \right] = 0. \quad (\text{A14})$$

We treat this equation perturbatively in $1/\beta^2$. Then, in the zeroth order, one has

$$\frac{1}{\lambda_1} = I_0(M_0), \quad (\text{A15})$$

where M_0 is zero-order mass of the bound state. The divergent part of the integral $I_0(M_0)$ is absorbed into the coupling constant λ_1 . Then, in the next-to-leading order,

$$\frac{1}{\lambda_1} - I_0(P) - \frac{2\xi}{\beta^2} \left[\frac{m^2}{(4\pi)^2} (\Lambda + 1) + I_2(P) - \frac{1}{4} P^2 I_0(P) \right] = 0, \quad (\text{A16})$$

$$\xi = \lambda_2 / \lambda_1,$$

with the problem of renormalization solved similarly to Eq. (A15). As g_2 enters the vertex together with $1/\beta^2$, Eqs. (A13) and (A15) together yield

$$g_2 = \xi g_1, \quad (\text{A17})$$

and thus we arrive at the vertex function in the form

$$\Gamma(p, P) = g_1 \left(1 + \xi \frac{p(p - P)}{\beta^2} \right), \quad (\text{A18})$$

which requires normalization. This is discussed in detail in Appendix B.

APPENDIX B: NORMALIZATION OF THE VERTEX FUNCTION

Normalization of the vertex function is given by Eq. (10). In the zeroth order in the $1/\beta^2$ expansion this gives

$$g_1^2 \frac{\partial I_0(P)}{\partial P^2} = 1, \quad (\text{B1})$$

which, for a loosely bound state with $\varepsilon \ll m$, reproduces the relation (31) with $g_{s0} = g_1$. Let us go beyond the zeroth order now and include corrections $\propto 1/\beta^2$. The form of $\Gamma(p, P)$ given in Eq. (A18) obviously represents the first two terms in the successive expansion of the exact vertex function in the inverse powers of β^2 . Such an expansion performed prior to taking integrals with $\Gamma(p, P)$ involved may explode if the rest of the integrand does not converge fast enough to suppress the contribution of the higher and higher powers of the loop momentum which appear in the $1/\beta^2$ expansion of $\Gamma(p, P)$. This is obviously not the case for the loop integral (10) and thus we face the problem of convergence of the normalization integral already to order $1/\beta^2$. Notice, however, that the solution of this problem is well known—the normalization integral evaluated with the vertex function in the full form converges, and the expansion in $1/\beta^2$ is to be performed afterwards. Building the full form of the vertex function would require resorting to a particular model of the molecule formation which we would like to avoid in our general consideration. Fortunately, for loosely bound states, the model-dependent contributions to the vertex function appear in higher orders in the ε/m expansion. Indeed, if we substitute the vertex function (A18) to the normalization condition (10) and perform integration in d^4k retaining only the terms of order $\sqrt{\varepsilon/m}$ and neglecting all higher contributions, then the result can be expressed entirely through the integrals $I_0(P)$ and $I_2(P)$ defined in Appendix A, computed to the same order,

$$I_0(P) = \frac{1}{(4\pi)^2} \Lambda + \frac{1}{8\pi^2} - \frac{1}{16\pi} \sqrt{\frac{\varepsilon}{m}} + \dots,$$

$$I_2(P) = \frac{2m^2}{(4\pi)^2} \Lambda + \frac{3m^2}{16\pi^2} - \frac{m^2}{16\pi} \sqrt{\frac{\varepsilon}{m}} + \dots \quad (\text{B2})$$

All divergent contributions disappear, as discussed in Appendix A, and the result (37) is readily reproduced, where

$$g_S = Z g_1. \quad (\text{B3})$$

Then, finally, the scalar vertex function takes the form of Eq. (36).

As a cross-check of the results (36) and (37) we assume a particular form of the full scalar vertex compatible with the

large- β expansion (36). As such we choose, for the sake of transparency, the form:

$$\Gamma(p, P) = Z^{-1} g_S \frac{\beta^2}{\beta^2 - \xi p(p - P)}. \quad (\text{B4})$$

Then, introducing Feynman parameters and integrating out the four-momentum, one can rewrite the normalization condition (10) in the form:

$$\frac{g_S^2}{8\pi^2} \int_0^1 \frac{z dz}{Q^2} \int_0^{(1-z)\beta^2/(\xi Q^2)} dx \frac{x(1-z - \xi x Q^2/(2\beta^2))}{[x^2 \xi^2 Q^2 P^2/\beta^4 + x(1 + \xi(zP^2 - m^2)/\beta^2) + 1]^3} = 1, \quad (\text{B5})$$

where $Q^2 = m^2 - z(1-z)P^2$. The integral in x can be easily evaluated and yields, to order $1/\beta^2$,

$$\int_0^{(1-z)\beta^2/(\xi Q^2)} dx \frac{x(1-z - \xi x Q^2/(2\beta^2))}{[x^2 \xi^2 Q^2 P^2/\beta^4 + x(1 + \xi(zP^2 - m^2)/\beta^2) + 1]^3} \approx \frac{1}{2}(1-z) \left(1 - 2\xi \frac{zP^2 - m^2}{\beta^2}\right), \quad (\text{B6})$$

so that the relation (B5) reduces to

$$\left(1 - \xi \frac{P^2 - 2m^2}{\beta^2}\right) \frac{g_S^2}{16\pi^2} \int_0^1 dz \frac{z(1-z)}{Q^2} = 1, \quad (\text{B7})$$

where the symmetry of the function $z(1-z)/Q^2$ with respect to the variable change $z \rightarrow 1-z$ was used. The remaining integral in z is specific for the pointlike limit and it was evaluated before in order to derive the relation (37). Therefore, one can rewrite (B7) in the form

$$\begin{aligned} \frac{g_S^2}{4\pi} &= \left(1 + \xi \frac{P^2 - 2m^2}{\beta^2}\right) \left(\frac{g_S^2}{4\pi}\right)_{\text{pointlike}} \\ &= \left(1 + 2\xi \frac{m^2}{\beta^2} + \mathcal{O}\left(\frac{m\varepsilon}{\beta^2}\right)\right) \left(\frac{g_S^2}{4\pi}\right)_{\text{pointlike}}. \end{aligned} \quad (\text{B8})$$

Thus the relation (37) is rederived plus the first correction of the form $(m\varepsilon)/\beta^2$ is established for the vertex function (B4). As it was anticipated before, the term of order m^2/β^2 is model independent and coincides with the one obtained in the simple approach described in the beginning of this appendix.

The result of this appendix can be understood in the language of effective field theories. Indeed, all divergencies are to be absorbed into appropriate counterterms, however, there are no counter terms allowed that are non-analytic in ε . Consequently all terms that scale as $\sqrt{\varepsilon}$ are fixed model independently.

APPENDIX C: FAILURE OF A SIMPLE RECIPE OF GAUGE INVARIANCE RESTORATION FOR A NONTRIVIAL VERTEX FUNCTION $\Gamma(k, P)$

In this appendix we demonstrate that gauge invariance appears broken to order m^2/β^2 for the naive attempts to consider a nontrivial vertex function $\Gamma(k, P)$ without a self-consistent dressing of the photon emission vertices and the meson propagators. Thus we start from Eq. (15) with a

nontrivial vertex function $\Gamma(k, P)$ but with the bare photon emission vertices and meson propagators. This yields:

$$\begin{aligned} W_{\mu\nu} q_1^\mu &= e^2 \int \frac{d^4 k}{(2\pi)^4} [\Gamma(k + q_1, P) - \Gamma(k, P)] S(k) \\ &\quad \times S(k - q_2)(2k - q_2)_\nu. \end{aligned} \quad (\text{C1})$$

For $\Gamma(k, P) \neq \text{const}$ the difference in the square brackets does not vanish, and as a result also $W_{\mu\nu} q_1^\mu$ remains finite. A naive counting of powers of β shows that this difference scales as $1/\beta^2$ (see, for example, Eq. (36) for the form of the vertex $\Gamma(k, P)$) and thus a simple trick with adding contact diagrams with the photon emission from the scalar vertex described by $\partial\Gamma/\partial k^\mu$ could solve the problem to the given order $1/\beta^2$, so that gauge invariance breaking happens only in the order $1/\beta^4$ which we neglect throughout the paper. In Ref. [15] this approach was successfully used for the decay $\phi \rightarrow \gamma f_0$ —the interested reader can find the details and the discussion of the method, for example, in the aforementioned paper. In contrast to the ϕ -decay, here we have two identical photons in the final state. The requirement of symmetry of the amplitude with respect to the interchange of these leads to two single contact diagrams and one double contact diagram, the latter containing $\partial^2\Gamma/\partial k^\mu \partial k^\nu$ in the scalar vertex. The contributions to be added to $W_{\mu\nu} q_1^\mu$ take the form:

$$\begin{aligned} \delta W_{\mu\nu}^{(1)} q_1^\mu &= -q_1^\mu e^2 \int \frac{d^4 k}{(2\pi)^4} \frac{\partial\Gamma(k, P)}{\partial k^\mu} \\ &\quad \times S(k) S(k - q_2)(2k - q_2)_\nu, \\ \delta W_{\mu\nu}^{(2)} q_1^\mu &= -q_1^\mu e^2 \int \frac{d^4 k}{(2\pi)^4} \frac{\partial\Gamma(k, P)}{\partial k^\nu} \\ &\quad \times S(k) S(k - q_1)(2k - q_1)_\mu, \end{aligned} \quad (\text{C2})$$

$$\delta W_{\mu\nu}^{(3)} q_1^\mu = q_1^\mu e^2 \int \frac{d^4 k}{(2\pi)^4} \frac{\partial^2 \Gamma(k, P)}{\partial k^\mu \partial k^\nu} S(k), \quad (\text{C3})$$

so that the resulting expression reads

$$\begin{aligned} W_{\mu\nu} q_1^\mu &= e^2 \int \frac{d^4 k}{(2\pi)^4} \left[\Gamma(k + q_1, P) - \Gamma(k, P) \right. \\ &\quad \left. - q_1^\mu \frac{\partial \Gamma(k, P)}{\partial k^\mu} \right] [(2k - q_2)_\nu S(k - q_2) S(k) \\ &\quad - 2k_\nu S^2(k)], \end{aligned} \quad (\text{C4})$$

$$\Gamma(k + q_1, P) - \Gamma(k, P) - q_1^\mu \frac{\partial \Gamma(k, P)}{\partial k^\mu} = Z^{-1} g_S \frac{\beta^2 \xi^2 [2(kq_1) - (q_1 q_2)]^2}{[\beta^2 - \xi(k + q_1)(k - q_2)]^2 [\beta^2 - \xi k(k - q_1 - q_2)]}, \quad (\text{C5})$$

which scales as $1/\beta^4$ as $\beta \rightarrow \infty$. However, in contrast to this the corresponding integral of Eq. (C4) for $W_{\mu\nu} q_1^\mu$ scales as $1/\beta^2$. To see this observe that convergence to the integral is provided by the denominator with the consequence that k takes values of the order of β (for large β). Therefore, the relevant estimate for Eq. (C5) is $\beta^2 (kq_1)^2 / \beta^6 \sim \omega^2 / \beta^2$, where ω is the typical energy of a photon. We checked by an explicit calculation that this behavior is valid for the integral (C4) as well.

Therefore, even introducing the correction terms of Eqs. (C3), does not change the order where a violation of gauge invariance appears—it appears at order ω^2 / β^2 . In the given kinematics photons are not soft, $\omega \approx m$. Thus the simple prescription described in this appendix to cure the violation of gauge invariance does not improve the situation, since gauge invariance is still broken by the terms of the order of m^2 / β^2 .

APPENDIX D: ALTERNATIVE DERIVATION OF EQ. (42)

As a cross-check of gauge invariance, let us extract the amplitude (42) from the coefficient at the structure $g_{\mu\nu}$ in Eq. (19). This is less trivial as the seagull diagram [Fig. 5(c)] contributes. This seagull has Z^{-1} factor coming from the scalar vertex and Z^2 factor due to the two meson propagators. Because of this mismatch of Z -factors, in addition to the contribution giving the result (42), a divergent piece arises in $W_{\mu\nu}$, which comes from the leading term, of order $(1/\beta^2)^0$, in the scalar vertex $\Gamma(p, P)$:

$$\begin{aligned} -2\xi i g_{\mu\nu} g_S e^2 I_0 (Z - 1) &= -2\xi i g_{\mu\nu} g_S e^2 I_0 \frac{\lambda_2 m^2}{\beta^2 (4\pi)^2} \\ &\quad \times (\Lambda + 1), \end{aligned} \quad (\text{D1})$$

where the expressions for the Z and Λ in the dimensional regularization scheme are given in Eq. (A4). To order $1/\beta^2$, one can make use of Eq. (A15) and replace $\lambda_2 I_0$ in (D1) by

where the integral coming from the double contact vertex was integrated by parts. In order to proceed we use the form of Eq. (B4) for the vertex function—since we are only after the scaling behavior of the remaining violation of gauge invariance, here we are free to work within a particular model. This choice ensures convergence of the loop integral and complies with the large- β expansion (36). Then we get

$$\lambda_2 I_0 = \xi \lambda_1 I_0 = \xi. \quad (\text{D2})$$

In the meantime, another divergent contribution comes from the $1/\beta^2$ term in $\Gamma(k, P)$, which reads:

$$2\xi i g_{\mu\nu} g_S e^2 \frac{\xi}{\beta^2} \frac{m^2}{(4\pi)^2} (\Lambda + 1), \quad (\text{D3})$$

so that the two undesired divergent contributions to $W_{\mu\nu}^a$ cancel against each other and the gauge-invariant formula (19) is rederived, with $M(P^2)$ given by Eq. (41).

APPENDIX E: ACCOUNT FOR EXCHANGE CURRENTS

The interaction Lagrangian (33) does not give rise to extra kaon-photon vertices, in addition to those following from the kinetic part of the kaons Lagrangian. In this appendix we consider the possibility for these vertices to appear due to meson exchange currents.

Let us introduce field doublet φ^α , and have the interaction Lagrangian in the form

$$L_{int} = \frac{1}{2} \lambda_1 (\varphi^+ \vec{\tau} \varphi)^2 + \frac{\lambda_2}{2\beta^2} [\partial_\mu (\varphi^+ \vec{\tau} \varphi)]^2. \quad (\text{E1})$$

In momentum space, it gives rise to the four-point vertex of the form

$$\left(\lambda_1 + \frac{\lambda_2}{\beta^2} (p - k)^2 \right) \vec{\tau}_\beta^\alpha \vec{\tau}_\rho^\lambda, \quad (\text{E2})$$

where p and k are the momenta of the incoming and outgoing kaons, and α, β and ρ, λ are the isospin indices of incoming and outgoing mesons, respectively. As before, the term linear in s was absorbed into λ_1 .

Electromagnetic interaction is then found from the minimal substitution,

$$p_\mu \delta_\beta^\alpha \rightarrow p_\mu \delta_\beta^\alpha - e A_\mu Q_\beta^\alpha, \quad (\text{E3})$$

where $Q = (1 + \tau_3)/2$ is the charge operator. Thus two new kaon-photon vertices are generated in the order $1/\beta^2$: the contact single-photon vertex (q_μ is the photon momentum),

$$i \frac{\lambda_2}{\beta^2} \epsilon_{3kn} \tau_{k\beta}^\alpha \tau_{n\rho}^\lambda (2k - 2p + q)_\mu, \quad (\text{E4})$$

and the double-photon vertex,

$$\begin{aligned} v_{\mu,\beta}^\lambda(p, q) = & Q_\beta^\lambda (2p - q)_\mu - i \frac{\lambda_2}{\beta^2} \tilde{\tau}_\rho^\lambda Q_\alpha^\rho \tilde{\tau}_\beta^\alpha \int \frac{d^4 k}{(2\pi)^4} S(k) S(k - q) (p - k)^2 (2k - q)_\mu \\ & + \frac{\lambda_2}{\beta^2} \epsilon_{3kn} \tau_{k,\beta}^\alpha \tau_{n,\alpha}^\lambda \int \frac{d^4 k}{(2\pi)^4} S(k) (2k - 2p + q)_\mu, \end{aligned} \quad (\text{E8})$$

satisfies the Ward identity

$$q^\mu v_{\mu,\beta}^\lambda = Q_\beta^\lambda [S^{-1}(p) - S^{-1}(p - q)], \quad (\text{E9})$$

with $S(p)$ given by Eqs. (E6) and (E7). After simple algebraic transformations the photon emission vertex (E8) can be represented as

$$v_{\mu,\beta}^\lambda(p, q) = Q_\beta^\lambda Z^{-1} (2p - q)_\mu + \dots, \quad (\text{E10})$$

where the ellipsis denotes the terms irrelevant to the $\gamma\gamma$ decay involving real photons.

The Bethe-Salpeter equation is now

$$\begin{aligned} \Gamma_\rho^\alpha(p, P) = & -i \int \frac{d^4 k}{(2\pi)^4} \tilde{\tau}_\beta^\alpha \Gamma_\lambda^\beta(k, P) \tilde{\tau}_\rho^\lambda S(k) S(k - P) \\ & \times \left(\lambda_1 + \frac{\lambda_2}{\beta^2} (p - k)^2 \right). \end{aligned} \quad (\text{E11})$$

The momentum dependence of the vertex and the normalization condition are the same as in Eqs. (36) and (37), respectively, while the matrix structure of the vertex is either

$$\Gamma_\rho^\alpha(p, P) \propto \frac{1}{\sqrt{2}} \delta_\rho^\alpha, \quad (\text{E12})$$

in the isosinglet case, or

$$\Gamma_\rho^\alpha(p, P) \propto \frac{1}{\sqrt{2}} \tau_{k\rho}^\alpha, \quad (\text{E13})$$

in the isotriplet one. Consequently, in the former case, Eq. (A15) is replaced by

$$\frac{1}{\lambda_1} = 3I_0(P), \quad (\text{E14})$$

whereas, in the latter case, it becomes

$$2g_{\mu\nu} \frac{\lambda_2}{\beta^2} (\tilde{\tau}_\beta^\alpha \tilde{\tau}_\rho^\lambda - \tau_{3\beta}^\alpha \tau_{3\rho}^\lambda). \quad (\text{E5})$$

The dressed propagator is now

$$S_\beta^\alpha = \delta_\beta^\alpha S(p), \quad S(p) = \frac{Z}{p^2 - m^2}, \quad (\text{E6})$$

with

$$Z = 1 + \frac{3\lambda_2 m^2}{(4\pi)^2 \beta^2} (\Lambda + 1). \quad (\text{E7})$$

The dressed photon emission vertex,

$$\frac{1}{\lambda_1} = -I_0(P). \quad (\text{E15})$$

Thus one may have either an isosinglet or an isotriplet bound state, depending on the sign of λ_1 .

Let us turn to the calculation of the two-gamma decay amplitude. The contributions to the decay amplitude proportional to $q_{1\nu} q_{2\mu}$ are left intact by inclusion of the exchange currents and they are given by the graphs (a) and (b) of the Fig. 5. In the meantime, extra terms appear which contribute to the coefficient at the structure $g_{\mu\nu}$. Because of the mismatch of Z -factors, the divergent piece coming from the leading order term of $\Gamma_\rho^\alpha(p, P)$ appears, similarly to Eq. (D1), to be

$$-6ig_{\mu\nu} \frac{g_S e^2}{\sqrt{2}} I_0 \lambda_1 \frac{\xi}{\beta^2} \frac{m^2}{(4\pi)^2} (\Lambda + 1), \quad (\text{E16})$$

while the contribution from the $1/\beta^2$ term in $\Gamma_\rho^\alpha(p, P)$ remains the same as in the neutral exchange case—see Eq. (D3). Thus, using the relations (E14) and (E15), one arrives at the conclusion that, in the isosinglet case, the graphs of Fig. 5 do not generate extra contributions proportional to $g_{\mu\nu}$ either while, in the isotriplet case, such an extra term reads:

$$8ig_{\mu\nu} \frac{g_S e^2}{\sqrt{2}} \frac{\xi}{\beta^2} \frac{m^2}{(4\pi)^2} (\Lambda + 1). \quad (\text{E17})$$

In addition to the graphs depicted in Fig. 5, there are extra contributions due to the presence of new contact vertices (E4) and (E5) (see Fig. 7). The single-photon vertex (E4) generates the contribution [see Fig. 7(a)]

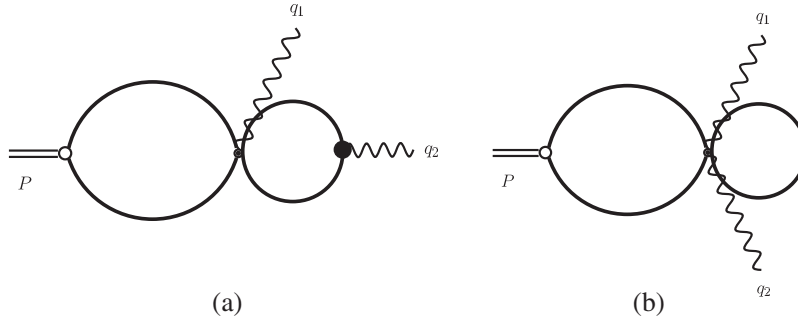


FIG. 7. Extra diagrams contributing to the two-photon scalar decay amplitude due to exchange currents.

$$\begin{aligned}
W_{\mu\nu}^{(1)} &= g_S e^2 \frac{\lambda_2}{\beta^2} i \epsilon_{3kn} \tau_{k\beta}^\alpha \Gamma_\lambda^\beta \tau_{n\rho}^\lambda Q_\alpha^\rho \int \frac{d^4 k}{(2\pi)^4} \frac{d^4 q}{(2\pi)^4} \\
&\times S(k) S(k-P) S(q) S(q-q_2) (2q-2k+q_1)_\mu \\
&\times (2q-q_2)_\nu + (1 \leftrightarrow 2, \mu \leftrightarrow \nu), \quad (\text{E18})
\end{aligned}$$

where the matrix structure of Γ_λ^β is given by either Eq. (E12) or by Eq. (E13). The double-photon vertex (E5) gives rise to [see Fig. 7(b)]

$$\begin{aligned}
W_{\mu\nu}^{(2)} &= 2g_{\mu\nu} g_S e^2 \frac{\lambda_2}{\beta^2} \Gamma_\lambda^\beta (\tilde{\tau}_\beta^\alpha \tilde{\tau}_\rho^\lambda - \tau_{3\beta}^\alpha \tau_{3\rho}^\lambda) \int \frac{d^4 k}{(2\pi)^4} \frac{d^4 q}{(2\pi)^4} \\
&\times S(k) S(k-P) S(q). \quad (\text{E19})
\end{aligned}$$

Explicit calculations yield, for real photons,

$$W_{\mu\nu}^{(1)} + W_{\mu\nu}^{(2)} = 0, \quad (\text{E20})$$

in the isosinglet case, and

$$W_{\mu\nu}^{(1)} + W_{\mu\nu}^{(2)} = -8ig_{\mu\nu} \frac{g_S e^2}{\sqrt{2}} \frac{\xi}{\beta^2} \frac{m^2}{(4\pi)^2} (\Lambda + 1), \quad (\text{E21})$$

in the isotriplet case, so that this divergent term cancels against that given by Eq. (E17). As a result, we conclude that Eq. (46) holds also if exchange currents are included.

-
- [1] E. Klempt, hep-ph/0404270.
[2] E. S. Swanson, Phys. Rep. **429**, 243 (2006).
[3] J. L. Rosner, hep-ph/0612332.
[4] C. R. Münz, Nucl. Phys. **A609**, 364 (1996).
[5] R. Delbourgo, D.-S. Liu, and M. D. Scadron, Phys. Lett. B **446**, 332 (1999).
[6] J. A. Oller and E. Oset, Nucl. Phys. **A629**, 739 (1998).
[7] J. R. Pelaez, Mod. Phys. Lett. A **19**, 2879 (2004).
[8] R. L. Jaffe, hep-ph/0701038.
[9] T. Barnes, Phys. Lett. B **165**, 434 (1985); in *Proceedings of the IXth International Workshop on Photon-Photon Collisions*, edited by D. O. Caldwell and H. P. Paar (World Scientific, Singapore, 1992), p. 263.
[10] S. Krewald, R. H. Lemmer, and F. Sassen, Phys. Rev. D **69**, 016003 (2004).
[11] V. B. Berestetskii, E. M. Lifshitz, and L. P. Pitaevskii, *Landau and Lifshitz, Course of Theoretical Physics: Quantum Electrodynamics* (Pergamon, New York, 1980), 3rd ed., Vol. 4.
[12] J. A. Wheeler, Ann. N.Y. Acad. Sci. **48**, 219 (1946); J. Pirenne, Archives des Sciences Physiques et Naturelles **29**, 265 (1947).
[13] A. Nogga and C. Hanhart, Phys. Lett. B **634**, 210 (2006).
[14] R. H. Lemmer, hep-ph/0701027.
[15] Yu. S. Kalashnikova, A. E. Kudryavtsev, A. V. Nefediev, C. Hanhart, and J. Haidenbauer, Eur. Phys. J. A **24**, 437 (2005).
[16] A. N. Kvinikhidze and B. Blankleider, Phys. Rev. C **60**, 044003 (1999).
[17] B. Borasoy, P. C. Bruns, U. G. Meißner, and R. Nissler, Phys. Rev. C **72**, 065201 (2005).
[18] H. Haberzettl, K. Nakayama, and S. Krewald, Phys. Rev. C **74**, 045202 (2006).
[19] C. H. Llewellyn-Smith, Ann. Phys. (N.Y.) **53**, 521 (1969).
[20] E. S. Ackleh and T. Barnes, Phys. Rev. D **45**, 232 (1992).
[21] J. Pestieau, C. Smith, and S. Trine, Int. J. Mod. Phys. A **17**, 1355 (2002).
[22] I. B. Khriplovich and A. I. Milstein, Zh. Eksp. Teor. Fiz. **106**, 689 (1994) [J. Exp. Theor. Phys. **79**, 379 (1994)].
[23] Yu. Kalashnikova, A. E. Kudryavtsev, A. V. Nefediev, J. Haidenbauer, and C. Hanhart, Phys. Rev. C **73**, 045203 (2006).
[24] N. N. Achasov and V. N. Ivanchenko, Nucl. Phys. **B315**, 465 (1989).
[25] S. Nussinov and T. N. Truong, Phys. Rev. Lett. **63**, 1349 (1989); **63**, 2002 (1989).
[26] J. L. Lucio and J. Pestieau, Phys. Rev. D **42**, 3253 (1990); **43**, 2447 (1991).

- [27] A. Bramon, A. Grau, and G. Pancheri, *Phys. Lett. B* **289**, 97 (1992).
- [28] F. Close, N. Isgur, and S. Kumano, *Nucl. Phys.* **B389**, 513 (1993).
- [29] V. E. Markushin, *Eur. Phys. J. A* **8**, 389 (2000).
- [30] S. Weinberg, *Phys. Rev.* **130**, 776 (1963).
- [31] V. Baru, J. Haidenbauer, C. Hanhart, Yu. Kalashnikova, and A. E. Kudryavtsev, *Phys. Lett. B* **586**, 53 (2004).
- [32] C. Hanhart, hep-ph/0609136.
- [33] V. Baru, J. Haidenbauer, C. Hanhart, A. Kudryavtsev, and U.-G. Meißner, *Eur. Phys. J. A* **23**, 523 (2005).
- [34] N. N. Achasov and G. N. Shestakov, *Phys. Rev. D* **72**, 013006 (2005).
- [35] W. -M. Yao *et al.* (Particle Data Group), *J. Phys. G* **33**, 1 (2006).
- [36] M. Boglione and M. R. Pennington, *Eur. Phys. J. C* **30**, 503 (2003).
- [37] K. Abe *et al.* (Belle Collaboration), *Phys. Rev. D* **75**, 051101 (2007).