

Charge diffusion in relativistic resistive second-order dissipative magnetohydrodynamics

Ashutosh Dash¹, Masoud Shokri¹, Luciano Rezzolla^{1,2,3} and Dirk H. Rischke^{1,4}

¹*Institut für Theoretische Physik, Johann Wolfgang Goethe-Universität,
Max-von-Laue-Strasse 1, D-60438 Frankfurt am Main, Germany*

²*School of Mathematics, Trinity College, Dublin 2, Ireland*

³*Frankfurt Institute for Advanced Studies, Ruth-Moufang-Strasse 1, 60438 Frankfurt am Main, Germany*

⁴*Helmholtz Research Academy Hesse for FAIR, Campus Riedberg,
Max-von-Laue-Strasse 12, D-60438 Frankfurt am Main, Germany*



(Received 17 November 2022; accepted 5 February 2023; published 1 March 2023)

We study charge diffusion in relativistic resistive second-order dissipative magnetohydrodynamics. In this theory, charge diffusion is not simply given by the standard Navier-Stokes form of Ohm's law, but by an evolution equation which ensures causality and stability. This, in turn, leads to transient effects in the charge-diffusion current, the nature of which depends on the particular values of the electrical conductivity and the charge-diffusion relaxation time. The ensuing equations of motion are of so-called stiff character, which requires special care when solving them numerically. To this end, we specifically develop an implicit-explicit Runge-Kutta method for solving relativistic resistive second-order dissipative magnetohydrodynamics and subject it to various tests. We then study the system's evolution in a simplified 1 + 1-dimensional scenario for a heavy-ion collision, where matter and electromagnetic fields are assumed to be transversely homogeneous, and investigate the cases of an initially nonexpanding fluid and a fluid initially expanding according to a Bjorken scaling flow. In the latter case, the scale invariance is broken by the ensuing self-consistent dynamics of matter and electromagnetic fields. However, the breaking becomes quantitatively important only if the electromagnetic fields are sufficiently strong. The breaking of scale invariance is larger for smaller values of the conductivity. Aspects of entropy production from charge-diffusion currents and stability are also discussed.

DOI: [10.1103/PhysRevD.107.056003](https://doi.org/10.1103/PhysRevD.107.056003)

I. INTRODUCTION

In heavy-ion collisions, the charges of the moving nuclei generate strong electromagnetic fields, the magnitude of which can reach the order of $\sim m_\pi^2 \sim 10^4 \text{ MeV}^2 \sim 10^{18} \text{ G}$ [1–7]. Such fields are among the largest ever observed in the Universe. The strong electromagnetic fields present in heavy-ion collisions, in conjunction with the anomaly of quantum chromodynamics (QCD), give rise to anomalous transport phenomena such as the chiral magnetic effect (CME) [8,9]. The CME has been extensively searched for experimentally in recent years [10–14], but so far without conclusive evidence for its existence. The main difficulty is that the lifetime of the magnetic field depends strongly on the electrical conductivity of the produced medium [15–17] and may be too short for the proposed observable signatures of the CME to develop. For other interesting phenomena due to the interplay of electromagnetic fields and nuclear matter, see the recent review [18].

The generic framework that couples the dynamics of electromagnetic fields with that of a relativistic fluid is called relativistic magnetohydrodynamics (MHD) [19,20].

It is well known that ordinary hydrodynamics, i.e., without the coupling to gauge fields, can be considered as an effective theory valid in the low-frequency, large-wavelength limit. The expansion parameter of this theory is the Knudsen number, i.e., the ratio of typical microscopic and macroscopic length scales. While the microscopic length scale is given by the mean free path of particles or the interparticle separation, the macroscopic length scale characterizes the spatiotemporal variations of the hydrodynamical fields [21]. At zeroth order in this expansion, the fluid is assumed to instantaneously reach local thermodynamical equilibrium everywhere, which corresponds to ideal (nondissipative) hydrodynamics. Navier-Stokes theory emerges at first order in Knudsen number. In this theory, dissipative currents are given by the corresponding transport coefficients, such as bulk and shear viscosity, as well as particle diffusion coefficient, multiplied with spatial gradients of the hydrodynamical fields. Standard MHD appears as a natural extension of Navier-Stokes theory for a conducting fluid near local thermodynamical equilibrium interacting with electromagnetic fields [22–25].

However, first-order Navier-Stokes theory is known to be acausal and unstable [26].¹ Transient, or second-order dissipative, theories account for terms of second order in Knudsen number and avoid such problems by introducing evolution equations for the dissipative currents. These evolution equations have been derived from kinetic theory as underlying microscopic theory using the method of moments in Ref. [28]. In transient hydrodynamical theories, the dissipative currents typically relax on finite timescales to their corresponding Navier-Stokes values [29–31], rendering the system causal and stable if the relaxation times are sufficiently long [32]. For nonpolarizable, nonmagnetizable fluids, second-order dissipative hydrodynamics has recently been extended to a theory of resistive second-order dissipative MHD in Refs. [33,34]. Relativistic resistive second-order dissipative MHD has been also derived in the relaxation-time approximation in Refs. [35,36].

So far, numerical simulations are mostly based on ideal MHD, i.e., the nonresistive (infinite-conductivity) limit [37–39]. In this paper, we perform the first numerical simulations of resistive second-order dissipative MHD. We note that, from a numerical perspective, this is a so-called stiff problem; i.e., it involves physical timescales which can be much smaller than the timescale on which the fluid-dynamical variables evolve. Using an explicit time-stepping scheme is not feasible in this case, since one would have to choose a time step which is much smaller than the spatial grid size, which may increase the calculation time to an unacceptably long level. Therefore, one solution is to use an implicit time-stepping scheme. Here, we employ an implicit-explicit Runge-Kutta (IMEX) scheme, which we specifically develop for solving resistive second-order dissipative MHD. We mention that a similar scheme has been recently employed to solve nonresistive second-order dissipative MHD in the context of astrophysical scenarios [40]. Another recent development is a code which solves resistive first-order dissipative MHD in $3 + 1$ dimensions [41]. As the current paper represents the first step in solving resistive second-order dissipative MHD, we consider a simplified geometry where all fields are homogeneous in two spatial directions, rendering the system effectively $1 + 1$ dimensional. We also neglect the effects of bulk and shear viscosity and exclusively focus on the evolution of the charge-diffusion current. One motivation for this work comes from recent results of transport simulations [42–44], which reveal that the charge-diffusion current needs some time to reach the value given by the standard Navier-Stokes form of Ohm’s law. Our goal is to investigate such transient dynamics via resistive second-order dissipative MHD calculations.

¹Recently it was shown that these acausalities and instabilities can be removed by a suitable matching procedure to the local-equilibrium reference state [27].

This paper is organized as follows. In Sec. II we provide a short review of resistive second-order dissipative MHD for nonpolarizable, nonmagnetizable fluids, neglecting the effects of bulk viscous pressure and shear-stress tensor. In Sec. III we discuss the principles of our numerical implementation of resistive second-order dissipative MHD. Then, in Sec. IV we discuss our simplified setup of a relativistic heavy-ion collision and present the results of our numerical simulations. Section V concludes this work with a summary of our results and an outlook. The Appendices A and B contains further details of our numerical approach as well as the study of various test cases.

We use natural Heaviside-Lorentz units in which $\hbar = c = k_B = \epsilon_0 = \mu_0 = 1$. The convention for the metric tensor is “mostly minus,” i.e., $g_{\mu\nu} = \text{diag}(1, -1, -1, -1)$. The comoving derivative of a quantity A is denoted as $\dot{A} := u^\mu \partial_\mu A$, where u^μ is the fluid four-velocity. The projector onto the three-space orthogonal to the fluid velocity is defined as $\Delta^{\mu\nu} := g^{\mu\nu} - u^\mu u^\nu$. The projection of a vector A^μ orthogonal to the fluid velocity is denoted as $A^{(\mu)} := \Delta^{\mu\nu} A_\nu$. The covariant spatial gradient is denoted as $\nabla^\mu := \Delta^{\mu\nu} \partial_\nu$. The symmetric, traceless projector of rank-4 is $\Delta_{\alpha\beta}^{\mu\nu} := \frac{1}{2}(\Delta_\alpha^\mu \Delta_\beta^\nu + \Delta_\beta^\mu \Delta_\alpha^\nu) - \frac{1}{3} \Delta^{\mu\nu} \Delta_{\alpha\beta}$, the application of which onto a rank-2 tensor $A^{\mu\nu}$ is denoted by $A^{(\mu\nu)} := \Delta_{\alpha\beta}^{\mu\nu} A^{\alpha\beta}$.

II. EQUATIONS OF MOTION

The evolution of a relativistic fluid coupled to electromagnetic fields is effectively described by the conservation laws of energy-momentum and conserved charges, Maxwell’s equations, and, in standard resistive MHD, by constitutive relations for the dissipative currents. For instance, the diffusive part of the charge current is given by the Navier-Stokes form of Ohm’s law, which encodes the instantaneous response of the fluid’s diffusion current to an electric field proportional to the electrical conductivity. The latter depends on the underlying microscopic properties of the fluid. In resistive second-order dissipative MHD, the constitutive relations are replaced by evolution equations for the dissipative currents, and Ohm’s law assumes a more complex form. In this work, which constitutes the first attempt at solving resistive second-order dissipative MHD numerically in a semirealistic setup, we neglect the evolution of bulk viscous pressure and shear-stress tensor and focus solely on the charge-diffusion current. In this section, we describe in more detail the three sets of equations, namely conservation laws, Maxwell’s equations, and the equation for the charge-diffusion current.

A. Conservation laws

The conservation laws of energy momentum and charge read

$$\partial_\mu T^{\mu\nu} = 0, \quad (1)$$

$$\partial_\mu J_f^\mu = 0, \quad (2)$$

where $T^{\mu\nu}$ is the total energy-momentum tensor of the system and J_f^μ is the charge four-current of the fluid. The energy-momentum tensor is given by

$$T^{\mu\nu} = T_f^{\mu\nu} + T_{em}^{\mu\nu}. \quad (3)$$

It consists of a fluid part $T_f^{\mu\nu}$ and an electromagnetic part $T_{em}^{\mu\nu}$, which for nonpolarizable, nonmagnetizable fluids reads [45]

$$T_{em}^{\mu\nu} = -F^{\mu\lambda}F_\lambda^\nu + \frac{1}{4}g^{\mu\nu}F^{\alpha\beta}F_{\alpha\beta}. \quad (4)$$

Here,

$$F^{\mu\nu} = \mathcal{E}^\mu u^\nu - \mathcal{E}^\nu u^\mu + \epsilon^{\mu\nu\alpha\beta} u_\alpha \mathcal{B}_\beta \quad (5)$$

is the Faraday tensor decomposed in terms of the fluid four-velocity u^μ , as well as the electric- and magnetic-field four-vectors $\mathcal{E}^\mu \equiv F^{\mu\nu}u_\nu$ and $\mathcal{B}^\mu \equiv \frac{1}{2}\epsilon^{\mu\nu\alpha\beta}F_{\alpha\beta}u_\nu$ in the comoving frame, respectively [46]. Neglecting contributions from bulk viscous pressure and shear-stress tensor, the energy-momentum tensor of the fluid reads in the Landau frame

$$T_f^{\mu\nu} \equiv wu^\mu u^\nu - Pg^{\mu\nu}, \quad (6)$$

where $w \equiv \varepsilon + P$ is the enthalpy density, with ε being the energy density and P the pressure, respectively. It should be noted that, in the presence of an external charge current J_{ext}^μ , the divergence of $T^{\mu\nu}$ is given by

$$\partial_\mu T^{\mu\nu} = -F^\nu{}_\lambda J_{\text{ext}}^\lambda, \quad (7)$$

because external currents induce electromagnetic fields and thus feed energy and momentum into the system.

For the sake of simplicity we assume that the fluid consists of particles (and antiparticles) with a single charge q . The charge current of the fluid is then given by

$$J_f^\mu \equiv q(nu^\mu + V^\mu), \quad (8)$$

where n is the net particle density in the local rest frame of the fluid and $qV^\mu \equiv \Delta_\nu^\mu J_f^\nu$ is the charge-diffusion current. We note that the pressure in Eq. (6) is not an independent variable, but given by an equation of state (EOS) of the form $P(\varepsilon, n)$.

B. Maxwell's equations

The evolution of the electric and magnetic fields is given by Maxwell's equations,

$$\partial_\mu F^{\mu\nu} = J^\nu, \quad (9)$$

$$\epsilon^{\mu\nu\alpha\beta} \partial_\mu F_{\alpha\beta} = 0, \quad (10)$$

where the total charge four-current $J^\mu \equiv J_f^\mu + J_{\text{ext}}^\mu$ serves as the source for the electromagnetic fields.

C. Charge-diffusion current

Ohm's law, in its simplest covariant Navier-Stokes-type form, reads [47–49]

$$qV^\mu = q\kappa\nabla^\mu\alpha + \sigma\mathcal{E}^\mu. \quad (11)$$

Here, σ is the electrical conductivity, κ is the particle diffusion coefficient, and $\alpha := \mu/T$ is the ratio of chemical potential μ to temperature T . The electrical conductivity and charge-diffusion coefficient satisfy the Wiedemann-Franz law, $\sigma = q^2\kappa/T$. The well-known ideal-MHD limit, i.e., when $\sigma \rightarrow \infty$, can be obtained from Eq. (11) by retaining only the second term on the right-hand side and demanding $\mathcal{E}^\mu = 0$ to have a finite J_f^μ .

As discussed in the Introduction, the Navier-Stokes form (11) of Ohm's law is problematic in a relativistic context, because it allows signals to propagate with infinite speed, violating causality [50,51]. Furthermore, a modification of this standard form of Ohm's law is required on the grounds that, even when an electric field is already present, the build up of the corresponding charge-diffusion current needs a finite time to reach the form given by Eq. (11), as also recently found in transport simulations [42–44]. In this work, we use the equation of motion of the charge-diffusion current as derived in resistive second-order dissipative magnetohydrodynamics [34,36]. In its most simple form it reads

$$\tau_V q \dot{V}^{(\mu)} + qV^\mu = q\kappa\nabla^\mu\alpha + \sigma\mathcal{E}^\mu, \quad (12)$$

where τ_V is the charge-diffusion relaxation time. Note that the charge-diffusion equation (12) represents the simplest possible way, in the spirit of the Maxwell-Cattaneo construction, to incorporate a causal time lag for the response of the charge-diffusion current to the dissipative forces on the right-hand side. Possible generalizations include additional terms as given in Eq. (25) of Ref. [34]; see also Ref. [36]. For vanishing bulk viscous pressure and shear-stress tensor, and for fluids which only move in one spatial dimension, most of these terms are zero. The other, non-vanishing ones are not necessarily small, but are omitted here to keep the discussion as simple as possible. Equations (1), (2), (9), (10), and (12), together with an EOS for the fluid and expressions for the charge-diffusion coefficient, conductivity, and relaxation time, completely describe the system under consideration provided consistent initial and boundary data are given.

D. Qualitative features of the resistive MHD description

At this point, it is useful to discuss some properties of the coupled system of equations of motion of relativistic resistive second-order dissipative MHD. To this end, for the sake of simplicity we neglect particle-density gradients, such that $\nabla^\mu \alpha \equiv 0$, and consider the rest frame of the fluid, in which case Ohm's law (12) becomes

$$\tau_V q \dot{V}^i = \sigma E^i - q V^i, \quad (13)$$

where $i = 1, 2, \text{ or } 3$, and $E^i = F^{i0}$ is the electric field.

Furthermore assuming that the conductivity and relaxation time are constant in space-time, we take the time derivative of the above equation and then use Ampere's law to obtain the equation of motion of a damped, driven harmonic oscillator,

$$\ddot{V}^i + 2\omega_0 \zeta_d \dot{V}^i + \omega_0^2 V^i = \frac{\omega_0^2}{q} \epsilon^{ijk} \partial_j B_k, \quad (14)$$

where $\omega_0 := \sqrt{\sigma/\tau_V}$, $\zeta_d := 1/(2\sqrt{\sigma\tau_V})$, and $B^i = -\frac{1}{2}\epsilon^{ijk} F_{jk}$.

The value of the damping ratio ζ_d determines the qualitative behavior of the system. (i) If $\zeta_d > 1$, the charge-diffusion current is overdamped and exponentially decays without oscillations. (ii) The case $\zeta_d = 1$ corresponds to the critical aperiodic-limit case, where the charge-diffusion current returns to a steady state as quickly as possible without oscillating. Finally, (iii) if $\zeta_d < 1$, the charge-diffusion current is underdamped and oscillates with an amplitude which gradually decreases to zero.

For applications in heavy-ion collisions, let us assume that $\sigma \sim 0.02T$, in accordance with lattice-QCD results [52]. Then, for case (ii), the relaxation time must be $\tau_V \sim 10/T$. Oscillations only happen if the relaxation time is larger than this value. For $T \sim 200$ MeV, $\tau_V \sim 10$ fm, which is comparable to the lifetime of the fireball. For such a large relaxation time, the hydrodynamical description (as considered as an expansion in powers of Knudsen number) breaks down, since then the microscopic scale τ_V is no longer much smaller than the macroscopic scale, in this case the system's lifetime.

In Sec. III and Appendix A, we discuss in detail how to numerically solve the system of Eqs. (1), (2), (9), (10), and (12). We subject our numerical procedure to various tests, which are discussed in Appendix B. Applications to heavy-ion collisions are studied in Sec. IV.

III. NUMERICAL PROCEDURE

In this section, we present the numerical method to solve the equations of motion of relativistic resistive second-order dissipative MHD. As already advertised, this poses a stiff problem, which requires the use of a dedicated method to obtain a solution which is correct from a mathematical,

and therefore also physical, point of view. In the following subsections, we first formulate the equations of motion in a fixed frame, the lab frame, and then discuss hyperbolic equations with stiff terms in general and then, more specifically, in the application to relativistic resistive second-order dissipative MHD.

A. Equations of motion in a fixed frame

In order to numerically solve the system of equations of motion of relativistic resistive second-order dissipative MHD one chooses a frame, in the following called the lab frame. In this frame, the equations of motion (1), (2), (9), (10), and (12) can be cast into the following conservative form,

$$\partial_t \mathbf{U} + \partial_j \mathbf{F}^j(\mathbf{U}) = \mathbf{S}(\mathbf{U}), \quad (15)$$

where \mathbf{U} represents the vector of conserved quantities and \mathbf{F}^j the vector of fluxes,

$$\mathbf{U} = \begin{pmatrix} e \\ M^i \\ N_f \\ V^i \\ B^i \\ E^i \end{pmatrix}, \quad \mathbf{F}^j(\mathbf{U}) = \begin{pmatrix} F_e^j \\ F_M^{ij} \\ v^j N_f \\ v^j V^i \\ \epsilon^{ijk} E_k \\ -\epsilon^{ijk} B_k \end{pmatrix}, \quad (16)$$

and the vector of sources reads

$$\mathbf{S}(\mathbf{U}) = \begin{pmatrix} 0 \\ 0 \\ -\partial_i(-v^i V^0 + V^i) \\ (\sigma \mathcal{E}^i + q \kappa \nabla^i \alpha - q V^i)/(q \tau_V \gamma) + V^i \partial_j v^j - u^i V^\nu \dot{u}_\nu \\ 0 \\ -J_f^j \end{pmatrix}, \quad (17)$$

along with constraint equations

$$\partial_i E^i = J_f^0, \quad (18)$$

$$\partial_i B^i = 0. \quad (19)$$

In the lab frame, the fluid four-velocity is $u^\mu = \gamma(1, \mathbf{v})$, where $\gamma = (1 - v^2)^{-1/2}$, and the quantities e , M^i , and N_f appearing in the vector \mathbf{U} are given as

$$e = \frac{1}{2}(E^2 + B^2) + \gamma^2 w - P, \quad (20)$$

$$M^i = \gamma^2 w v^i + \epsilon^{ijk} E_j B_k, \quad (21)$$

$$N_f = q(n\gamma + V^0). \quad (22)$$

Note that in the above equations E^i and B^i are the electromagnetic fields as measured in the lab frame whereas \mathcal{E}^μ and \mathcal{B}^μ are the electromagnetic fields as measured in the comoving frame of the fluid, respectively. Similarly, the quantities F_e^i , F_M^{ij} appearing in the flux vector $F^j(\mathbf{U})$ read

$$F_e^i = M^i, \quad (23)$$

$$F_M^{ij} = M^i v^j - P g^{ij} - E^i E^j - B^i B^j - \frac{1}{2}(E^2 + B^2)g^{ij}. \quad (24)$$

B. Hyperbolic equations with stiff terms

While the equations of motion of ideal MHD can be numerically solved very efficiently, the equations of motion of relativistic resistive second-order dissipative MHD pose considerable difficulties for a numerical solution, in particular when the conductivity in the plasma is large. In regions with high conductivity, the system will evolve on timescales which are very different from those in regions of low conductivity. Mathematically, we have to deal with a system of hyperbolic equations with stiff relaxation terms, which requires special care to capture the dynamics in a stable and accurate manner.

A prototype hyperbolic equation with a stiff source term $\mathbf{R}(\mathbf{U})/\epsilon$ and a nonstiff source term $\mathbf{T}(\mathbf{U})$ is given by

$$\partial_t \mathbf{U} + \partial_j \mathbf{F}^j(\mathbf{U}) = \frac{1}{\epsilon} \mathbf{R}(\mathbf{U}) + \mathbf{T}(\mathbf{U}), \quad (25)$$

where $\epsilon > 0$ is a relaxation time (which is not necessarily identical to τ_V).

For example, let us consider the Navier-Stokes form (11) of Ohm's law, which can be explicitly written as

$$J_f^i = \sigma \gamma (E^i + \epsilon^{ijk} v_j B_k - v^i E^j v_j) + q n v^i. \quad (26)$$

In the fluid rest frame, this reduces to the usual form $J_f^i = \sigma E^i$. In this case, there is no equation of motion for the charge-diffusion current qV^μ , and the system (15) of equation of motion has the reduced set of conserved variables $\mathbf{U} = (e, M^i, B^i, E^i)$ and flux variables $\mathbf{F}^j = (F_e^j, F_M^{ij}, \epsilon^{ijk} E_k, -\epsilon^{ijk} B_k)$, with sources $\mathbf{S} = (0, 0, 0, -J_f^i)$. Hence, a comparison to the prototype equation (25) reveals that the relaxation time ϵ can be identified with the resistivity $1/\sigma$.

In the limit $\epsilon \rightarrow \infty$, the stiff source term in Eq. (25) vanishes. In this case, the system is equivalent to a standard hyperbolic equation. A typical finite-volume method to numerically solve such a system requires a bound for the speed c_h with which perturbations propagate in the fluid. In standard fluid dynamics, c_h is given by the speed of sound

waves propagating relative to the fluid flow, e.g., for one-dimensional fluid flow, $v^x = v$, $v^y = v^z = 0$ [53],

$$c_h = \max \left(\frac{v + c_s}{1 + v c_s}, \frac{v - c_s}{1 - v c_s} \right), \quad (27)$$

where $c_s^2 := \partial P / \partial e|_{s/n}$ (with s being the entropy density of the fluid) is the speed of sound. The speed c_h , together with the hydrodynamic length scale L defined by the spatio-temporal variations of the hydrodynamic variables, defines a characteristic timescale $\tau_h = L/c_h$ of the hyperbolic part.

In the opposite limit $\epsilon \rightarrow 0$, corresponding to infinite conductivity, the system is stiff, since the timescale ϵ of the stiff source term $\mathbf{R}(\mathbf{U})$ is much smaller than τ_h . In this limit, the stability of a numerical solution scheme using explicit time stepping can only be achieved choosing the time step $\Delta t \leq \epsilon$. For small ϵ , such a requirement can considerably prolong calculation times and thus renders an explicit integration scheme impractical.

Therefore, to solve a stiff system of hyperbolic equations, one has to employ a different numerical approach. Typically, one uses either one of the following methods:

- (1) The Strang-splitting method [54], which provides second-order accuracy if each step is second-order accurate. However, higher-order accuracy is difficult to obtain even in nonstiff problems with this kind of method.
- (2) IMEX [55], which represents an effective solution to the problem when a hierarchy of vastly different timescales is involved and one does not want to sacrifice numerical accuracy. The main drawback is the difficulty of implementation.

We note that the use of the IMEX method in this work has been crucial to obtain the mathematically correct solution in the regimes of large conductivity, where the stiff character of the equations is most evident. Alternative numerical methods, such as the Strang-splitting method, have also been tested but can be shown to be inadequate under the physical conditions explored here. A more detailed discussion of the numerical implementation of the IMEX method for relativistic resistive second-order dissipative MHD is presented in Appendix A, while various test cases, including a comparison with the Strang-splitting method, are presented in Appendix B.

IV. SIMPLIFIED SETUP FOR HEAVY-ION COLLISIONS

In this section, we apply the reduced MHD approach discussed in Sec. II to a simplified setup for heavy-ion collisions, where the system is homogeneous in the directions transverse to the beam axis, while the fluid only moves in the longitudinal (i.e., beam) direction.

At relativistic energies, the momenta of the colliding nuclei are so large that the nuclear stopping power is not sufficient to significantly decelerate them. Therefore, we

assume that the electromagnetic field is created by protons moving with rapidity $\pm Y_{\text{bm}}$, where $Y_{\text{bm}} = \text{Arctanh}\sqrt{1 - 4m_N^2/s_{NN}}$ is the beam rapidity in the center-of-momentum (C.M.) frame [56] and \pm corresponds to the protons moving in the $\pm z$ -direction. Here, m_N is the mass of the nucleon and $\sqrt{s_{NN}}$ is the C.M. energy per nucleon pair. We do not distinguish between spectator and participant protons, i.e., assume that the electromagnetic field of a nucleus is created by a charge of magnitude Z . For the sake of simplicity we also assume that charge to be pointlike. Then, the electromagnetic four-potential in the Lorenz gauge (see Ref. [57]) can be constructed by boosting the electrostatic potential of a charge at rest to the C.M. frame,

$$A_{\pm}^{\mu} = \left(\frac{Z\alpha_{\text{EM}}\gamma}{r_{\pm}}, 0, 0, v_{\pm} \frac{Z\alpha_{\text{EM}}\gamma}{r_{\pm}} \right), \quad (28)$$

where α_{EM} is the fine-structure constant, $v_{\pm} = \pm \tanh Y_{\text{bm}}$ are the velocities of the nuclei, and $\gamma := (1 - v_{\pm}^2)^{-1/2}$. At time t , the distance between the observer at (x, y, z) and the charge moving with velocity v_{\pm} is $r_{\pm}(x, y, z, t) := \sqrt{(x \pm b/2)^2 + y^2 + \gamma^2(z - v_{\pm}t)^2}$ and points from the center of the nucleus at $(\pm b/2, 0, v_{\pm}t)$ to the observer; see Fig. 1.

We assume that the system is homogeneous in the transverse plane, hence consider only the electromagnetic field near $\mathbf{x}_{\perp} := (x, y) = 0$. The nonzero components of the Faraday tensor $F^{\mu\nu} = \partial^{\mu}A^{\nu} - \partial^{\nu}A^{\mu}$, where $A^{\mu} = A_{+}^{\mu} + A_{-}^{\mu}$, at $\mathbf{x}_{\perp} = 0$ are then given by

$$B^y(0, 0, z, t) = \frac{b}{2} Z\alpha_{\text{EM}} \left(\frac{1}{r_{0,+}^3} + \frac{1}{r_{0,-}^3} \right) \sinh Y_{\text{bm}}, \quad (29)$$

$$E^x(0, 0, z, t) = \frac{b}{2} Z\alpha_{\text{EM}} \left(\frac{1}{r_{0,+}^3} - \frac{1}{r_{0,-}^3} \right) \cosh Y_{\text{bm}}, \quad (30)$$

where $r_{0,\pm} := r_{\pm}(0, 0, z, t)$.

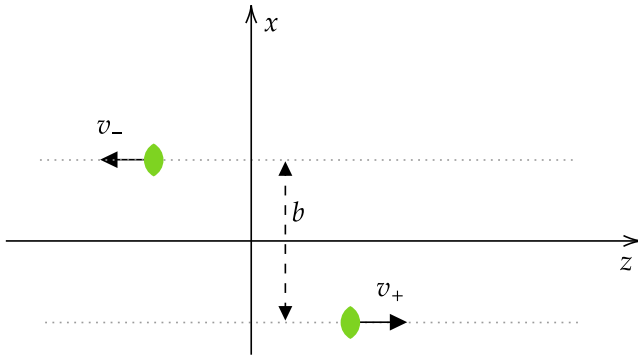


FIG. 1. Collision geometry of two Lorentz-contracted nuclei moving with velocity v_{\pm} in the $\pm z$ -direction at impact parameter b along the x -axis.

In the following, we will consider two cases. The first one is an initially nonexpanding fluid; i.e., the fluid is at rest with a uniform energy-density profile in the z -direction. This is done in order to compare with previous studies [15,58], where the authors solve Maxwell's equations in conducting media. The second case is a fluid which is initially expanding in the z -direction according to the boost-invariant Bjorken-flow scenario, i.e., with velocity $v^z = z/t$.

A. Initially nonexpanding fluid

We consider Au-Au collisions at $\sqrt{s_{NN}} = 200$ GeV with impact parameter $b = 10$ fm. The initial pressure is $P = 18.33$ GeV/fm³ and the initial electromagnetic fields are calculated using Eqs. (29) and (30) at time $t = 10^{-3}$ fm. All other fields are initially set to zero, including the initial net charge density so that the constraint Eq. (18) is identically satisfied. We use the EOS $P = \varepsilon/3$, i.e., $c_s^2 = 1/3$. However, in principle other EOSs can also be taken. The electrical conductivity σ and relaxation time τ_V are kept as free parameters. Varying them we will study the cases where $\zeta_d < 1$ or $\zeta_d > 1$.

Figure 2 shows the z -dependence of the electromagnetic fields at time $t = 2$ fm for different values of σ and fixed $\tau_V = 10^{-2}$ fm. From the left panel of Fig. 2 one observes that the magnetic field is even under $z \rightarrow -z$. For large σ , the field deviates only slightly from the initial profile of the magnetic field. This is due to the frozen-flux theorem, which tells us that the magnetic field is confined inside the matter, which is, at least initially, not expanding. For small σ , the magnetic-field evolution is closer to that in vacuum; i.e., it is peaked at the positions of the moving charges, with small diffusive tails which become narrower as $\sigma \rightarrow 0$. The right panel of Fig. 2 shows that the electric field is an odd function under $z \rightarrow -z$. Apart from this, the electric-field evolution mirrors that of the magnetic field: For large σ , it is located close to the origin, with very small magnitude, while for smaller σ it is peaked near the positions of the moving charges, and has a larger magnitude.

The left panel of Fig. 3 shows the time evolution of the charge-diffusion current qV^x (solid line) and $\sigma\mathcal{E}^x$ (dashed line) at $z = -0.006$ fm fm² for different values of σ , but the same $\tau_V = 10^{-2}$ fm. We see that, although in both cases the charge-diffusion current approaches its Navier-Stokes limit ($qV^x = \sigma\mathcal{E}^x$) at late times, the transient behavior at intermediate times depends on the damping ratio ζ_d . For the blue curves, $\zeta_d \simeq 15.81$, which corresponds to the overdamped case. In this case, the charge-diffusion current more or less follows the electric field without oscillations. On the other hand, for the red curves, $\zeta_d = 1/2$, corresponding to the underdamped case. Here, we observe a

²We use a slight offset from the origin, because by symmetry the electric field \mathcal{E}^x vanishes at that point.

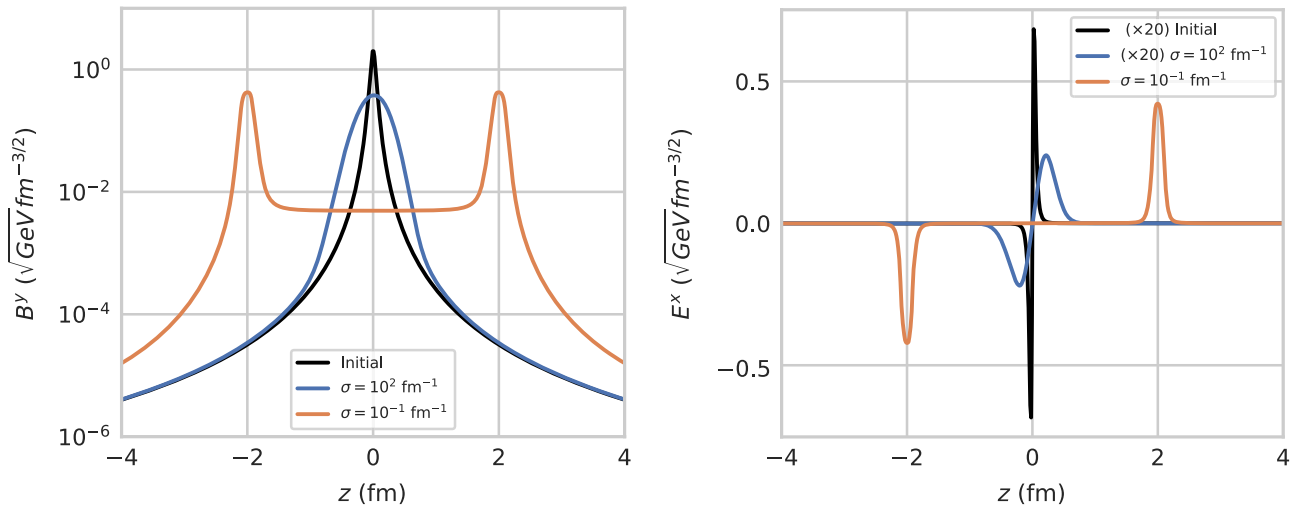


FIG. 2. Left panel: the magnetic-field component B^y as a function of z for the initially nonexpanding case. The black solid line is the initial magnetic field, while the other two lines are for two different values of the conductivity at time $t = 2$ fm. The relaxation time is fixed to $\tau_V = 10^{-2}$ fm. Right panel: same as left panel but for the electric-field component E^x .

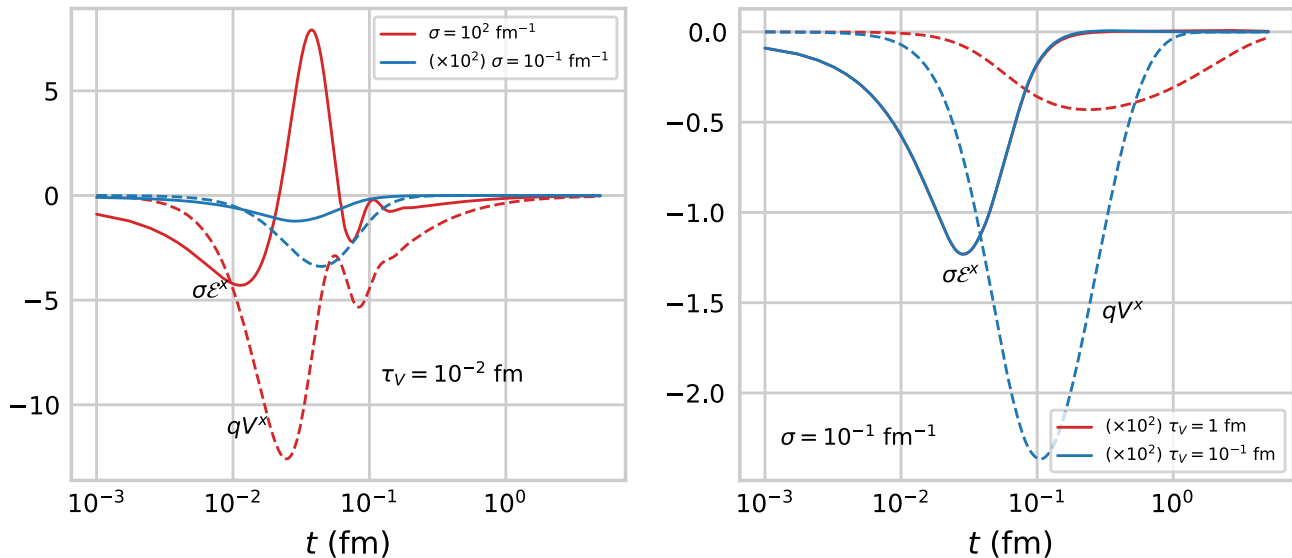


FIG. 3. Left panel: time evolution of the charge-diffusion current qV^x (dashed line) and $\sigma\mathcal{E}^x$ (solid line) at $z = -0.006$ fm for two different values of σ , but for the same $\tau_V = 10^{-2}$ fm. Right panel: same as left panel but for different values of τ_V for the same $\sigma = 10^{-1}$ fm $^{-1}$.

large phase shift between qV^x and $\sigma\mathcal{E}^x$, accompanied by an oscillatory behavior.

The right panel of Fig. 3 shows the time evolution of the same quantities as in the left panel for two different values of τ_V keeping $\sigma = 10^{-1}$ fm $^{-1}$ fixed. In both cases, the parameters are chosen such that the evolution of the charge-diffusion current is overdamped: For the red curves, $\zeta_d \simeq 1.58$, while for the blue curves $\zeta_d = 5$. The two curves for $\sigma\mathcal{E}^x$ overlap, while the charge-diffusion current for the larger relaxation time (red curve) takes longer to approach its Navier-Stokes value. It is also smaller in magnitude than for the smaller relaxation time, indicating

an incomplete generation of the charge-diffusion current. Such a phenomenon has also been recently seen in the transport approach of Ref. [42]. This, in turn, will affect the rate of decay of the magnetic field in the medium as we will see next.

The left panel of Fig. 4 shows the time evolution of B^y evaluated at $z = -0.006$ fm for $\sigma = 0$ fm $^{-1}$ (solid black line) and $\sigma = 10^{-1}$ fm $^{-1}$, for various values of τ_V . Due to the induced current generated in a medium with finite conductivity, the rate of decay of the magnetic field decreases (solid orange and blue lines). Moreover, as discussed in the previous paragraph, a longer relaxation

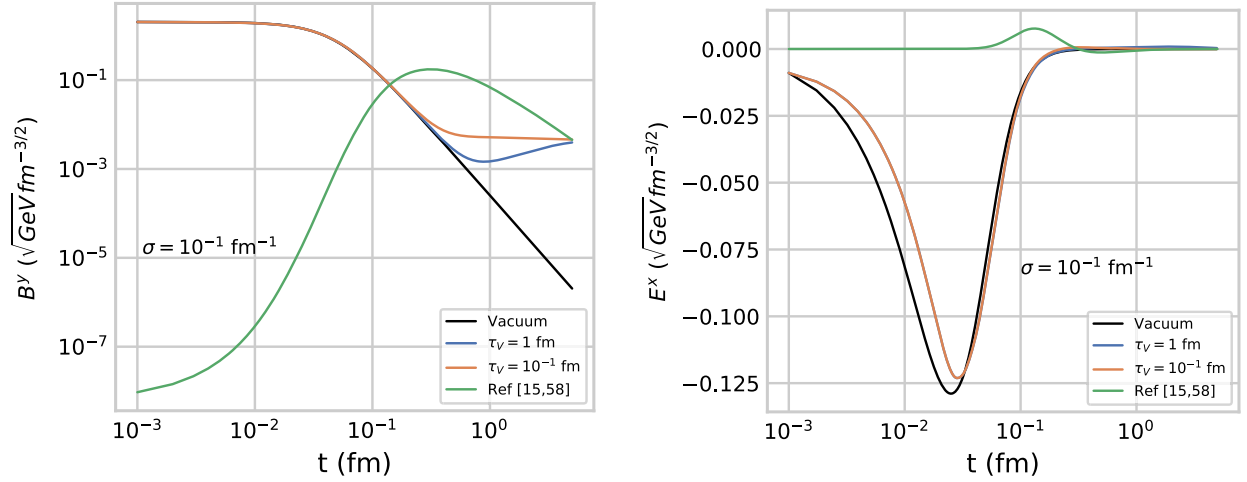


FIG. 4. Left panel: the time evolution of B^y at $z = -0.006$ fm. The solid black line corresponds to the solution in vacuum, i.e., for $\sigma = 0$ fm $^{-1}$, whereas the solid green line corresponds to the solution obtained in Refs. [15,58] for $\sigma = 10^{-1}$ fm $^{-1}$. The solid orange and blue lines correspond to the numerical solution computed for the same value of σ , but using different values for the relaxation time τ_V . Right panel: same as left panel but for E^x .

time (the solid blue line as compared to the solid orange line) means an incomplete response of the charge-diffusion current and hence leads to faster decay of the magnetic field at early times. However, at late times, for a larger relaxation time the induced current is still present, even though the electric field has decayed; see right panel of Fig. 3. This, in turn, leads to a decrease in the decay rate of the magnetic field at late times. It can even reverse the decay, leading to an increase of the magnetic field, as observed for the solid blue line in the left panel of Fig. 4. The solid green line shows the solution obtained by solving Maxwell's equation in a conducting medium shown previously in Refs. [15,58], using the Navier-Stokes form (11) of Ohm's law. The right panel of Fig. 4 shows the time evolution of E^x evaluated at $z = -0.006$ fm, for the same parameters as in the left panel. Here, the solid blue and orange lines overlap.

Notice that, as soon as one introduces a nonzero relaxation time τ_V , no matter how small, the initial evolution of the electromagnetic fields must follow that of the vacuum, since the backreaction of the medium needs some finite amount of time to build up. The solution of Refs. [15,58] does not account for this, since it uses the instantaneous Navier-Stokes form (11) of Ohm's law. The strong suppression of this solution as compared to the vacuum one is due to a specific form of the solution; cf., e.g., Eq. (2.3) in Ref. [58], which features an exponential behavior $\sim \exp(-\sigma b \sinh Y_{\text{bm}}/4) \sim \exp(-130\sigma \text{ fm})$ for RHIC energies ($Y_{\text{bm}} = 5$) and an impact parameter $b = 7$ fm. Thus, for $\sigma = 10^{-1}$ fm $^{-1}$, the initial electromagnetic fields will be smaller by several orders of magnitude as compared to the vacuum solution, as one observes in the left panel of Fig. 4.

In Fig. 5 we show the solution for the underdamped case, i.e., for $\sigma = 10$ fm $^{-1}$ and $\tau_V = 1$ and 3 fm, respectively.

While the evolution is similar to Fig. 4, at late times one observes oscillations typical for the underdamped case.

Next, we also compute the entropy production due to Ohmic dissipation. The rate of entropy production is also proportional to the rate of decrease of electromagnetic energy in the system [57]. The entropy current S^μ is given as

$$S^\mu = P\beta^\mu + T_f^{\mu\nu}\beta_\nu - \frac{\alpha}{q}J_f^\mu + \frac{\delta}{2}u^\mu V^\nu V_\nu + \mathcal{O}_3, \quad (31)$$

where \mathcal{O}_3 denotes terms of third order or higher in the dissipative currents. The coefficient δ is a function of the temperature and chemical potential of the equilibrium state and can only be obtained by matching this expansion with the underlying microscopic theory. Here we keep it as a free parameter.

Taking the divergence of the above equation and using the conservation laws (1) we arrive at the following expression:

$$\partial_\mu S^\mu = V_\mu \left[-\frac{q}{T}\mathcal{E}^\mu - \nabla^\mu \alpha + \delta \dot{V}^\mu + V^\mu \partial_\nu \left(\frac{\delta}{2} u^\nu \right) \right]. \quad (32)$$

The fourth term on the right-hand side can be neglected if we restrict the discussion to the simplest possible case, as has already been done in Eq. (12). Enforcing the positivity of the second law by requiring

$$\partial_\mu S^\mu = -\frac{q^2}{\sigma T} V^\mu V_\mu \quad (33)$$

leads to the evolution equation (12) for the charge-diffusion current. The coefficient δ can then be identified with

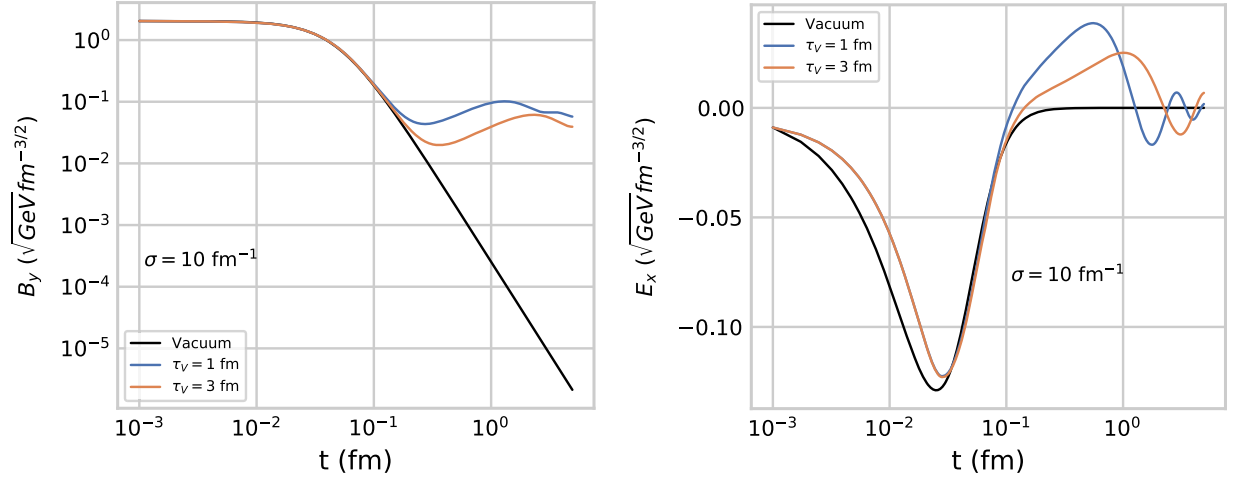


FIG. 5. Left panel: the time evolution of B^y at $z = -0.006$ fm. The solid black line corresponds to the solution in vacuum, i.e., for $\sigma = 0$ fm $^{-1}$. The solid orange and blue lines correspond to the numerical solution computed for $\sigma = 10$ fm $^{-1}$, but for different values for the relaxation time τ_V . Right panel: same as left panel but for E^x .

$\delta = q^2 \tau_V / (\sigma T)$. The left panel of Fig. 6 shows the grid-averaged entropy production rate,

$$\langle \partial_\mu S^\mu \rangle := \frac{\int d^3x \partial_\mu S^\mu}{\int P d^3x} = \frac{\int dz \partial_\mu S^\mu}{\int P dz} \quad (34)$$

as a function of time with constant conductivity $\sigma = 10^{-1}$ fm $^{-1}$. The spatial (z -) integration is taken over the whole grid. Notice that in case of a longer relaxation time (solid blue line), the rate of entropy production is delayed as compared to the case of a shorter relaxation time (solid orange line). The right panel of Fig. 6 shows the average entropy production rate for a larger value of the

conductivity, $\sigma = 10$ fm $^{-1}$. For such a large conductivity, a value of $\tau_V = 1$ fm for the relaxation time renders the charge-diffusion current underdamped (as then $\zeta_d \simeq 0.158$). Consequently, the entropy production rate oscillates (solid blue line). If we reduce the relaxation time to $\tau_V = 10^{-2}$ fm, for $\sigma = 10$ fm $^{-1}$ the charge-diffusion current is again in the overdamped region and the entropy production rate no longer oscillates (solid orange line). Qualitatively, this case looks like the cases shown in the left panel of Fig. 6; however, since τ_V is at least an order of magnitude smaller, the decrease of the entropy production rate occurs on a much smaller timescale as well. Naturally, as expected from Eq. (33), the entropy production is never negative.

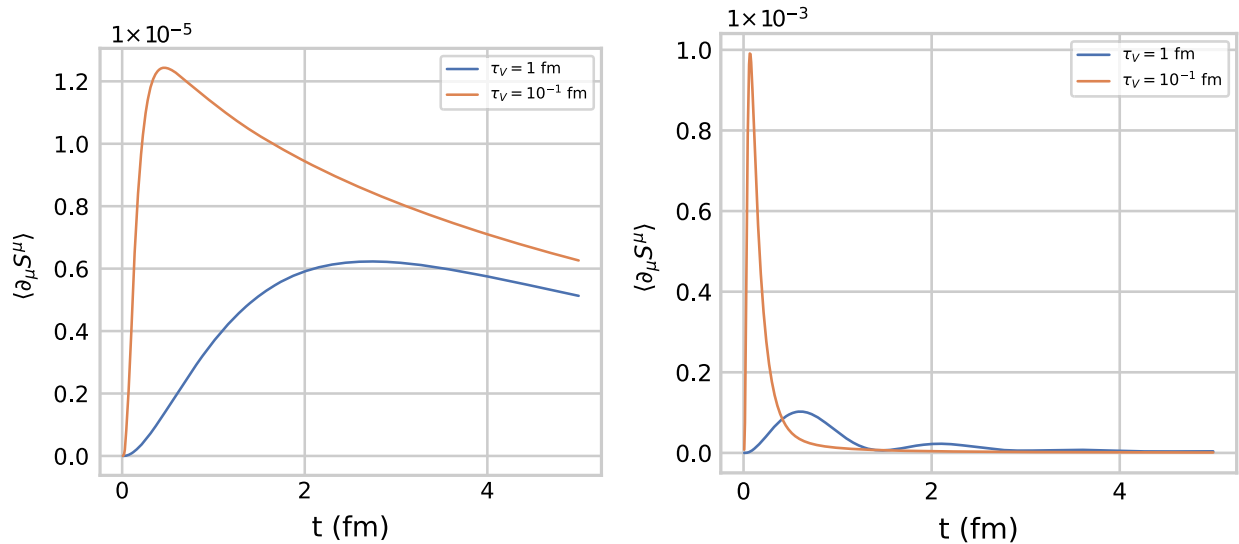


FIG. 6. Left panel: the time evolution of grid-averaged entropy production rate scaled by the pressure, $\langle \partial_\mu S^\mu \rangle$, as a function of time for a finite constant conductivity $\sigma = 10^{-1}$ fm $^{-1}$. Solid orange and blue lines correspond to the numerical solution using different relaxation times τ_V . Right panel: same as left panel but for $\sigma = 10$ fm $^{-1}$.

Finally, we remark that, because of a finite Poynting vector $\sim \mathbf{E} \times \mathbf{B}$, the electromagnetic field also accelerates the fluid, giving rise to a nonzero fluid velocity v^z . However, we do not discuss this here but rather move to the more physical case of a finite initial expansion rate of the fluid, where we investigate these effects in more detail.

B. Initially expanding fluid

We now consider a system which is initially expanding according to Bjorken's scaling-flow scenario [59], i.e., with initial flow velocity in the z -direction $v^z \equiv z/t \equiv \tanh \eta$, where $\eta := \text{Arctanh} v^z$ is the space-time rapidity. The transverse velocity is $\mathbf{v}_\perp \equiv 0$. The proper time of a fluid element moving with $v^z = \tanh \eta$ is denoted by τ . For such a flow profile, it is usually convenient to replace the standard Minkowski coordinates $x^\mu = (t, x, y, z)$ by Milne coordinates $\tilde{x}^\mu = (\tau, x, y, \eta)$, with metric tensor $g_{\mu\nu} = \text{diag}(1, -1, -1, -\tau^2)$.

In these coordinates, the equations of motion (15) acquire some additional source terms; for more details see Appendix C.

We consider the same colliding system as in Sec. IV A, i.e., an Au-Au collision at $\sqrt{s_{NN}} = 200$ GeV at impact parameter $b = 10$ fm. We initialize the evolution at $\tau_0 = 0.1$ fm with uniform energy density $\varepsilon = 13.33$ GeV/fm³. Since we also want to investigate the case of a temperature-dependent conductivity, we need to relate the temperature to a fluid-dynamical quantity, e.g., the energy density. Assuming the particles in our system to be massless spin-1/2 fermions, this relationship is given by $\varepsilon \equiv 7\pi^2 T^4/60$. The Faraday tensor $\tilde{F}^{\mu\nu}$ in Milne coordinates at initial time $\tau_0 = 0.1$ fm can be computed via a coordinate transformation,

$$\tilde{F}^{\mu\nu}(\tau_0, \mathbf{x}_\perp, \eta) = \frac{\partial \tilde{x}^\mu}{\partial x^\rho} \frac{\partial \tilde{x}^\nu}{\partial x^\sigma} F^{\rho\sigma}(\tau_0 \cosh \eta, \mathbf{x}_\perp, \tau_0 \sinh \eta), \quad (35)$$

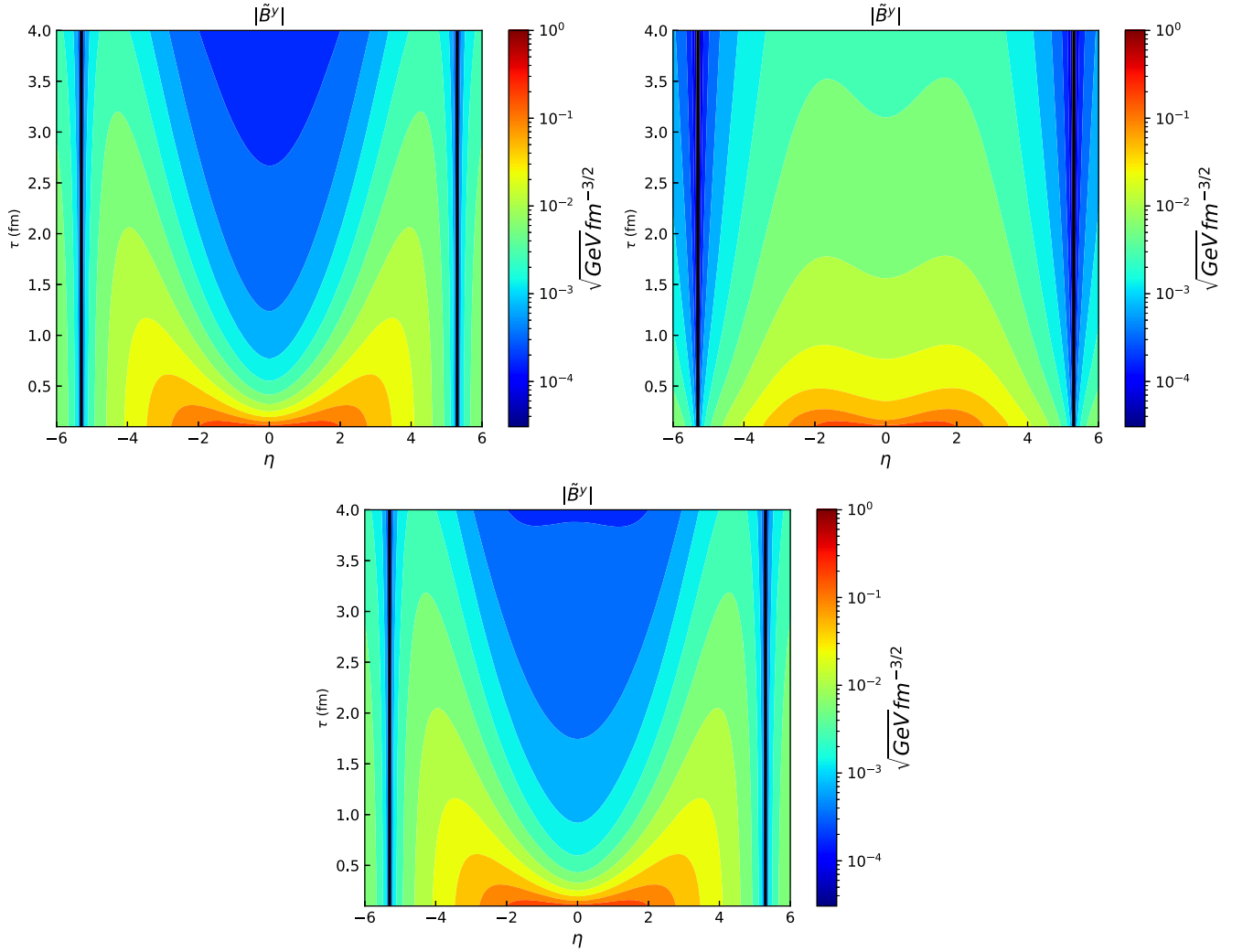


FIG. 7. Top: contour plot of $|\tilde{B}^y|$ (in units of $\sqrt{\text{GeV}}\text{fm}^{-3/2}$) in the (τ, η) -plane for $\sigma = 10^{-1} \text{ fm}^{-1}$ (left panel) and $\sigma = 10 \text{ fm}^{-1}$ (right panel). Bottom: same as above, but for a temperature-dependent conductivity $\sigma/T = 8\pi\alpha_{\text{EM}}/3$. The relaxation time is chosen as $\tau_V = 10^{-2} \text{ fm}$.

where the initial Faraday tensor $F^{\rho\sigma}$ in Minkowski coordinates is calculated using Eqs. (29) and (30). Since we assume homogeneity in the transverse direction, it is sufficient to consider all fields at $x_{\perp} = 0$. The further evolution of the electromagnetic fields is then determined by solving Maxwell's equations in Milne coordinates.

Figure 7 shows a contour plot of $|\tilde{B}^y|$ in the (τ, η) -plane for various values of the conductivity. The black vertical lines indicate beam rapidity $\pm Y_{\text{bm}}$. One feature to note is that the magnetic field is positive inside the region $|\eta| < Y_{\text{bm}}$ and negative outside. For a small value of σ the peak in the magnetic field remains close to the rapidities $\pm Y_{\text{bm}}$ of the initial charges, with diffusive tails extending toward the midrapidity region; cf. also Fig. 2. On the other hand, for a larger value of σ , the magnetic field remains at midrapidity as a consequence of the frozen-flux theorem; cf. Fig. 2. For a temperature-dependent conductivity, which in our case

we take to be $\sigma/T = 8\pi\alpha_{\text{EM}}/3 \simeq 0.06$ [60,61], the dynamics is nontrivial since the system transits from a conducting to an insulating medium as it cools down with time. Nevertheless, for such a small value of σ/T , the evolution is rather similar to the case with a constant small σ shown in the upper left panel of Fig. 7. We also note that, as the conductivity σ increases, the magnetic field at late times approaches the ideal-MHD scaling limit for Bjorken flow, i.e., at fixed η , $\tilde{B}^y \sim 1/\tau$, as found previously in Ref. [62].

To study the backreaction of the electromagnetic fields on the fluid, we consider the energy density and the fluid velocity. For pure Bjorken flow, ε should remain constant as a function of η and decay with τ as $\varepsilon \sim \tau^{-4/3}$. Moreover, in pure Bjorken flow $\tilde{u}^{\mu} = (1, 0, 0, 0)$. The backreaction should then in principle be visible in violations of this behavior. Nevertheless, in the ideal-MHD limit and in the absence of an external charge current, energy and

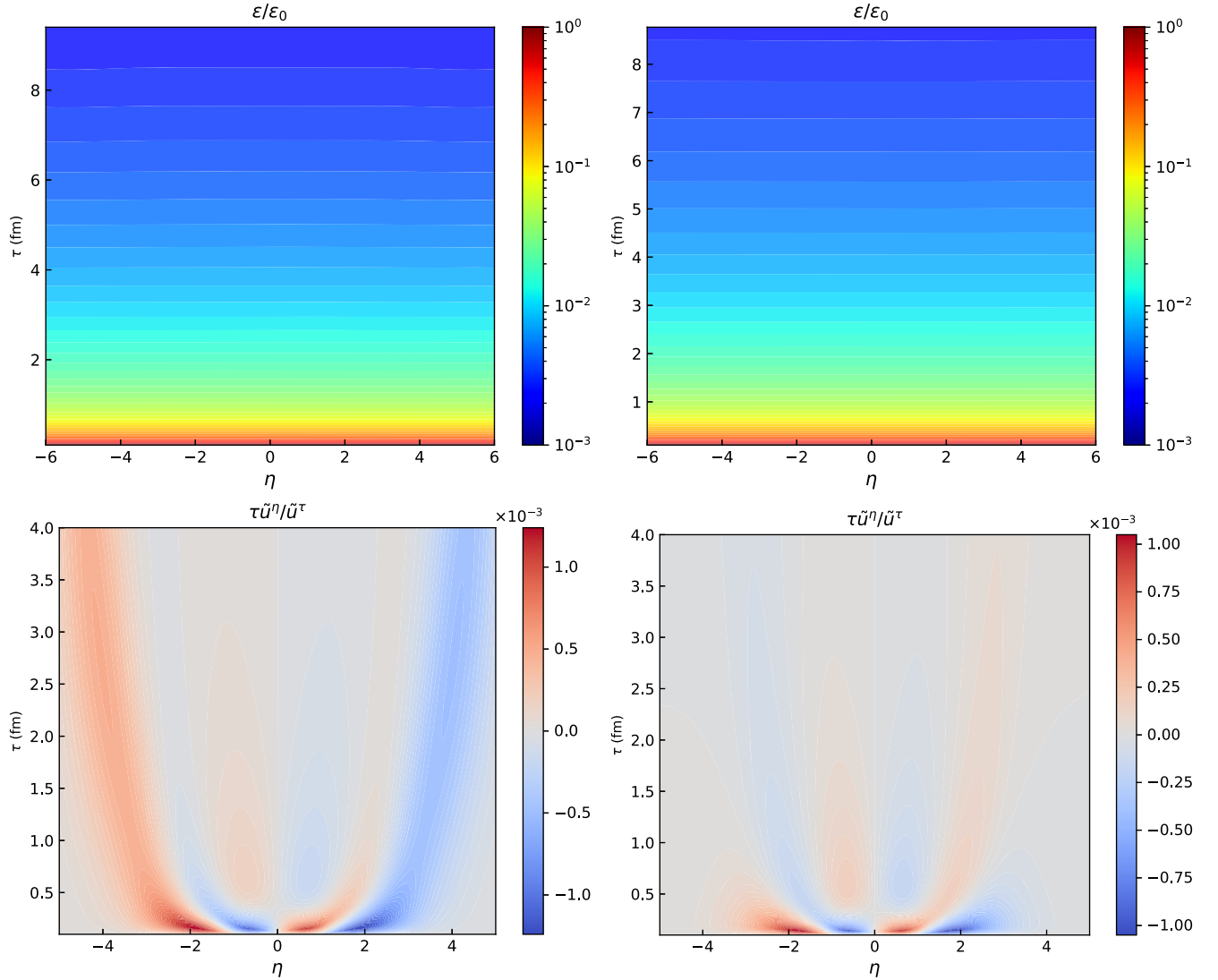


FIG. 8. Top row: contour plot of the energy density ε in the (τ, η) -plane for $\sigma = 10^{-1} \text{ fm}^{-1}$ (left panel) and $\sigma = 10 \text{ fm}^{-1}$ (right panel). Bottom row: same as top row, but for the fluid velocity in the η -direction, $\tau\tilde{u}^{\eta}/\tilde{u}^{\tau}$. The relaxation time is chosen as $\tau_{\nu} = 10^{-2} \text{ fm}$.

momentum of the fluid are separately conserved (see, e.g., Ref. [33]), i.e.,

$$\partial_\mu T_f^{\mu\nu} = 0. \quad (36)$$

This is because the electric field goes to zero in the ideal-MHD limit and the magnetic field influences the dynamics of the fluid only by coupling to the dissipative part of the charge current qV^μ . However, without dissipation, the flow is adiabatic and the dynamics of the fluid remains unaffected by the magnetic field. Therefore, for large values of σ we also do not expect any significant deviations from the Bjorken-flow scenario, and a notable backreaction on the fluid should only be observable for small values of σ .

These expectations are borne out by our numerical calculations. In Fig. 8 (top row) we show contour plots

of the energy density scaled by its value at τ_0 , $\varepsilon/\varepsilon_0$, in the (τ, η) -plane for a small value of $\sigma = 10^{-1} \text{ fm}^{-1}$ (left panel) and a large value of $\sigma = 10 \text{ fm}^{-1}$ (right panel), respectively. For both large and small values of the conductivity, there is no visible breaking of boost invariance in the energy density (upper row). We have also checked the scaling of the energy density with τ around midrapidity and find that it closely follows the ideal Bjorken-scaling law $\sim \tau^{-4/3}$.

Considering the fluid four-velocity, we show its η -component (multiplied by τ in order to make it dimensionless, and divided by its τ -component) in the bottom row of Fig. 8. Deviations from Bjorken flow are visible by the generation of nonzero values of $\tau\tilde{u}^\eta/\tilde{u}^\tau$. These deviations are larger (smaller) for smaller (larger) values of σ , which is evident from comparing the magnitude of $\tau\tilde{u}^\eta/\tilde{u}^\tau$ in the left and the right panels of the bottom row of Fig. 8.

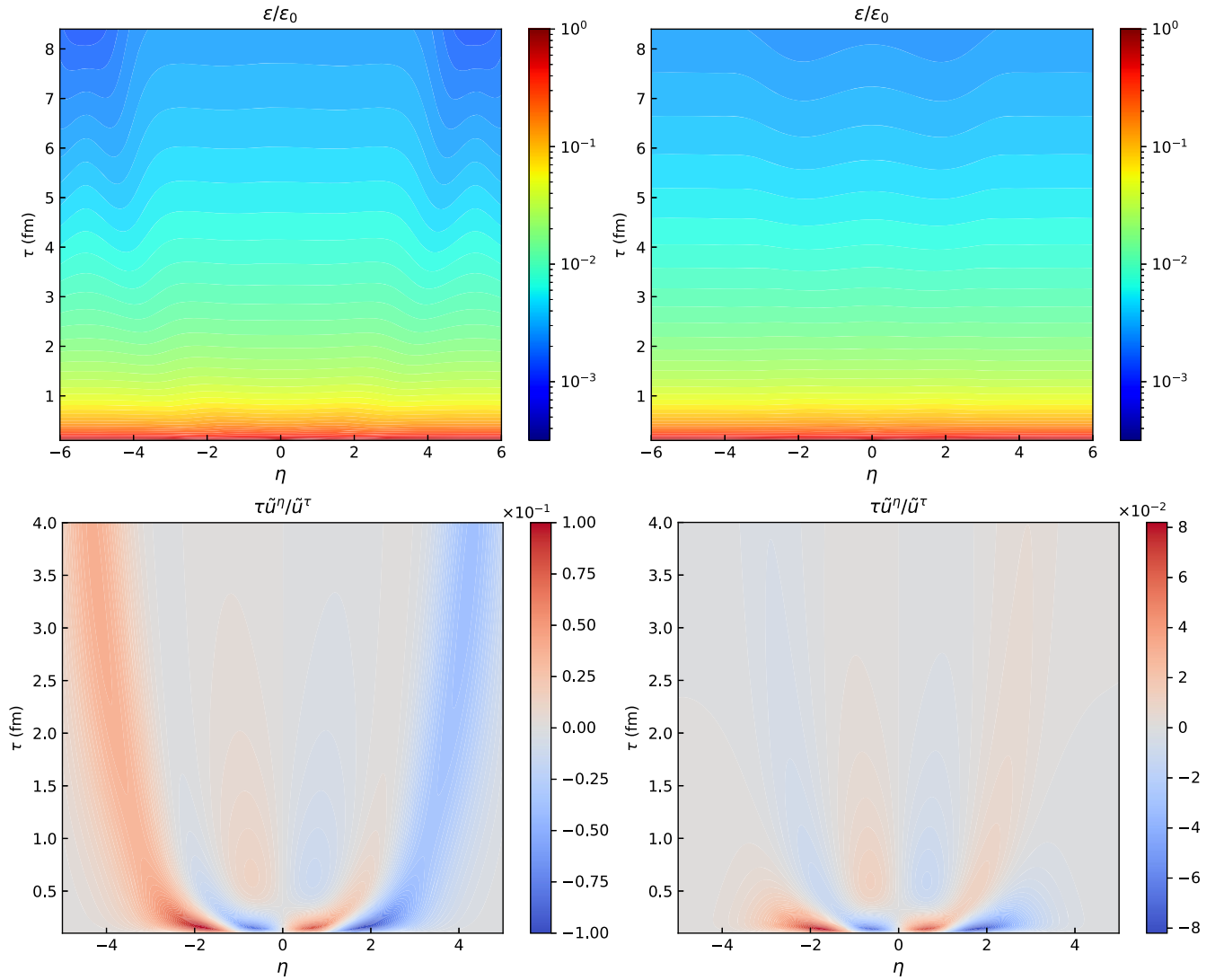


FIG. 9. Top row: contour plot of the energy density ε in the (τ, η) -plane for $\sigma = 10^{-1} \text{ fm}^{-1}$ (left panel) and $\sigma = 10 \text{ fm}^{-1}$ (right panel). Bottom row: same as top row, but for the fluid velocity $\tau\tilde{u}^\eta/\tilde{u}^\tau$. The relaxation time is chosen as $\tau_V = 10^{-2} \text{ fm}$ and inverse plasma $\beta^{-1} = 8$.

We observe from Fig. 8 that the backreaction of the magnetic field onto the fluid is quantitatively very small. The reason for this is that the initial value of the field energy density is small compared to that of the fluid. This is quantified by the so-called inverse plasma β -parameter. In this context, we choose to define it as $\beta^{-1} := B_0^2/(2P_0)$, where $B_0^2/2$ is the initial magnetic pressure and P_0 the initial pressure of the fluid at $\mathbf{x}_\perp = z = 0$. For the parameters in Fig. 8 we have $\beta^{-1} = 0.15$. If we artificially scale up the initial value of the electromagnetic fields such that $\beta^{-1} = 8$, we obtain a different picture; cf. Fig. 9. Such large values are not entirely unrealistic, in particular in the outer layers of the collision zone. As one can see from Fig. 9 for $\beta^{-1} = 8$ the breaking of boost invariance increases substantially as compared to Fig. 8. Now there are also visible deviations from Bjorken flow in the energy density, both for large and small values of the conductivity, and the fluid velocity can be 2 orders of magnitude larger than in the previous case. As one observes, the effect is larger for a smaller value of the conductivity; cf. left and right columns of Fig. 9.

V. CONCLUSION AND OUTLOOK

We have numerically solved the equations of motion of relativistic resistive second-order dissipative magnetohydrodynamics in a dimensionally reduced setup, which is nevertheless relevant for heavy-ion collisions. The present framework is self-consistent, meaning it includes the backreaction from electromagnetic fields to the fluid and vice versa. The fluid couples to the electromagnetic field via the charge diffusion, which is usually treated in the Navier-Stokes form of Ohm's law. As this introduces acausalities and instabilities in the relativistic case, we generalized the constituent relation for the charge-diffusion current to an equation of motion including a relaxation term of Maxwell-Cattaneo form. From the discussion of ordinary second-order dissipative fluid dynamics, such a constituent relation is known to in principle restore causality and stability. The equation of motion for the charge-diffusion current can be derived from kinetic theory using the Boltzmann-Vlasov equation [33,34]. We showed that, in the local rest frame of the fluid, such an equation, coupled to Maxwell's equations, can be recast into the equation of motion for a damped harmonic oscillator. The set of magnetohydrodynamical equations of motion features source terms which are stiff when the conductivity is large (e.g., in the ideal-conducting limit). Therefore, the solution requires a numerical method which is able to handle such stiff source terms. Here, we have employed an IMEX method and checked its validity for various non-trivial test cases. We have then applied our reduced magnetohydrodynamical setup to two scenarios: one where the fluid is initially at rest and one where it initially expands longitudinally according to the Bjorken scaling flow.

Depending on the choices for conductivity and relaxation time, we have found qualitatively different solutions. As expected, if the relaxation time is large, the evolution of the charge-diffusion current does not follow that of the electric field, but may considerably lag behind in time and may not reach the full magnitude expected from the Navier-Stokes form of Ohm's law. A large relaxation time leads to a faster decay of the magnetic field at early times, but the induced current persists longer, which can then reverse the decay and lead to an increase of the magnetic field at later times. Furthermore, when the product of relaxation time and conductivity is large, the equation of motion for the charge-diffusion current corresponds to that of an underdamped harmonic oscillator, which leads to an oscillatory behavior of the charge-diffusion current. We have also found that, in the case of an initially expanding fluid, the backreaction of the magnetic fields onto the fluid crucially depends on the value of the conductivity and the magnitude of the inverse plasma β -parameter. For small $\beta^{-1} \ll 1$, the backreaction is negligible, no matter whether we choose a large or a small conductivity. Only when $\beta^{-1} \gg 1$, we see a sizable backreaction, which is larger for a smaller value of the conductivity.

There are many possible directions for future work. First, one could relax the assumption of transverse homogeneity and extend this to a full $3 + 1$ -dimensional situation to have a realistic comparison with experimental data. Second, one could include a finite initial net electric charge distribution and study the interplay between electromagnetic field and fluid in the context of net charge fluctuations and their dissipation. This is important for the Beam Energy Scan program at the RHIC. Finally, one could extend the present treatment to allow the matter to have a finite polarization and magnetization. These and further questions will be addressed in future work.

ACKNOWLEDGMENTS

We thank G. Inghirami and M. Mayer for fruitful discussions. A. D. gratefully acknowledges the support of the Alexander von Humboldt Foundation through a research fellowship for postdoctoral researchers. This work is supported by the Deutsche Forschungsgemeinschaft (DFG, German Research Foundation) through the Collaborative Research Center CRC-TR 211 “Strong-interaction matter under extreme conditions”—Project No. 315477589—TRR 211 and by the State of Hesse within the Research Cluster ELEMENTS (Project ID No. 500/10.006).

APPENDIX A: IMEX SCHEME FOR RELATIVISTIC RESISTIVE SECOND-ORDER DISSIPATIVE MHD

In what follows we provide a more detailed discussion of our numerical implementation of the IMEX method for relativistic resistive second-order dissipative MHD.

We start by recalling that, in general, an IMEX scheme applies an implicit discretization scheme to the stiff terms and an explicit one to the nonstiff ones. For the system (25), it takes the form [53,55]

$$\begin{aligned} \bar{\mathbf{U}}^i &= \mathbf{U}^n - \Delta t \sum_{k=1}^{i-1} \tilde{a}_{ik} [\partial_j \mathbf{F}^j(\bar{\mathbf{U}}^k) - \mathbf{T}(\bar{\mathbf{U}}^k)] \\ &+ \Delta t \sum_{k=1}^i a_{ik} \frac{1}{\epsilon} \mathbf{R}(\bar{\mathbf{U}}^k), \end{aligned} \quad (\text{A1})$$

$$\begin{aligned} \mathbf{U}^{n+1} &= \mathbf{U}^n - \Delta t \sum_{i=1}^{\nu} \tilde{\omega}_i [\partial_j \mathbf{F}^j(\bar{\mathbf{U}}^i) - \mathbf{T}(\bar{\mathbf{U}}^i)] \\ &+ \Delta t \sum_{i=1}^{\nu} \omega_i \frac{1}{\epsilon} \mathbf{R}(\bar{\mathbf{U}}^i), \end{aligned} \quad (\text{A2})$$

where $\bar{\mathbf{U}}^i$ is the vector of conserved quantities at the intermediate time steps i of the Runge-Kutta (RK) scheme, $i = 1, \dots, \nu$, while \mathbf{U}^n is the vector of conserved quantities at time step t^n , where n is the number of time steps. The matrices $\tilde{A} = (\tilde{a}_{ik})$ and $A = (a_{ik})$ are $\nu \times \nu$ matrices such that the resulting scheme is explicit in $\partial_j \mathbf{F}^j - \mathbf{T}$ (i.e., $\tilde{a}_{ik} = 0$ for $k \geq i$) and implicit in \mathbf{R} (i.e., $a_{ik} = 0$ for $k > i$). A specific IMEX scheme is characterized by these two matrices and the coefficient vectors $\tilde{\omega}_i$ and ω_i .

A convenient way of describing an IMEX scheme is offered by the Butcher notation, in which the scheme is given by two tableaux (one for the explicit and the other for the implicit time stepping) of the type [53]

$$\begin{array}{c|c} \tilde{c} & \tilde{A} \\ \hline & \tilde{\omega}^T \end{array}, \quad \begin{array}{c|c} c & A \\ \hline & \omega^T \end{array}, \quad (\text{A3})$$

where the index T indicates transposition and where the coefficient vectors \tilde{c} and c satisfy the constraints

$$\tilde{c}_i = \sum_{j=1}^{i-1} \tilde{a}_{ij}, \quad c_i = \sum_{j=1}^i a_{ij}. \quad (\text{A4})$$

A viable numerical scheme maintains so-called strong stability at the discrete level and is then called strong stability preserving (SSP); see Ref. [63] for a detailed description of optimal SSP schemes and their properties. In the present work we use the SSP3 (3,3,2) scheme for our numerical solution.³ The Butcher-tableau form corresponding to this scheme is adopted from Refs. [53,55] and given in Table I.

³In this context, the abbreviation SSP k (s, σ, p) means the following. The index k denotes the order of the SSP scheme. The triplet of numbers (s, σ, p) indicates with s the number of stages of the implicit scheme (in our case $s = \nu$), with σ the number of stages of the explicit scheme (in our case $\sigma = \nu$), and with p the order of the IMEX scheme.

TABLE I. Butcher tableaux for the explicit and implicit SSP3 (3,3,2) scheme.

0	0	0	0
1	1	0	0
1/2	1/4	1/4	0
1/6 1/6 2/3			
γ	γ	0	0
$1 - \gamma$	$1 - 2\gamma$	γ	0
1/2	$1/2 - \gamma$	0	γ
1/6 1/6 2/3			
where $\gamma \equiv 1 - 1/\sqrt{2}$			

For the system (15) of equations of motion it is possible to introduce a natural decomposition of variables in terms of stiff and nonstiff parts. The vector \mathbf{U} can be split into two subsets: the stiff terms $\mathbf{X} = (V^i, E^i)^T$ and the nonstiff terms $\mathbf{Y} = (e, M^i, N_f, B^i)^T$. This choice is natural because the system has two intrinsic timescales σ and τ_V . When $\tau_V \rightarrow 0$, we recover the usual Navier-Stokes form of Ohm's law and the fields decay according to the timescale set by the conductivity σ , whereas when τ_V is finite the evolution of the system is dictated by the interplay of these two timescales and can be characterized by the value of the damping coefficient ζ_d entering Eq. (14). As a result, the procedure to compute each intermediate value $\bar{\mathbf{U}}^i$ of the IMEX scheme can be performed in two steps:

- (1) Perform an explicit time step by computing intermediate values $\mathbf{Y}^i, \mathbf{X}^i$, where i labels the RK step,

$$\mathbf{Y}^i = \mathbf{Y}^n - \Delta t \sum_{k=1}^{i-1} \tilde{a}_{ik} [\partial_j \mathbf{F}_Y^j(\bar{\mathbf{U}}^k) - \mathbf{T}_Y(\bar{\mathbf{U}}^k)], \quad (\text{A5})$$

$$\begin{aligned} \mathbf{X}^i &= \mathbf{X}^n - \Delta t \sum_{k=1}^{i-1} \tilde{a}_{ik} [\partial_j \mathbf{F}_X^j(\bar{\mathbf{U}}^k) - \mathbf{T}_X(\bar{\mathbf{U}}^k)] \\ &+ \Delta t \sum_{k=1}^{i-1} \frac{a_{ik}}{\epsilon^k} \mathbf{R}_X(\bar{\mathbf{U}}^k), \end{aligned} \quad (\text{A6})$$

where $\mathbf{F}_X^j, \mathbf{F}_Y^j$ are the fluxes pertaining to the stiff and nonstiff terms, respectively, and $\mathbf{T}_Y, \mathbf{T}_X$ are the nonstiff source terms corresponding to the variables \mathbf{Y} and \mathbf{X} , respectively. \mathbf{R}_X is the source term for the stiff variables, and the relaxation parameter $\epsilon^k \equiv \epsilon(\mathbf{Y}^k)$ is in principle also allowed to depend on the nonstiff \mathbf{Y}^k variables at the k th RK step.

- (2) Perform an implicit time step, which involves only \mathbf{X} , by solving

$$\bar{\mathbf{Y}}^i = \mathbf{Y}^i, \quad (\text{A7})$$

$$\bar{\mathbf{X}}^i = \mathbf{X}^i + \Delta t \frac{a_{ii}}{\epsilon^i} \mathbf{R}_X(\bar{\mathbf{U}}^i). \quad (\text{A8})$$

The implicit equation for $\bar{X}^i = (\bar{V}^i, \bar{E}^i)^T$ can be solved, yielding

$$\bar{V}^i = \left(1 + \frac{\Delta t a_{ii}}{\tau_V \gamma}\right)^{-1} \left(V^i + \frac{\Delta t a_{ii}}{\tau_V \gamma} \frac{\sigma}{q} \bar{E}^i\right) \quad (\text{A9})$$

and

$$\bar{E}^i = E^i - \Delta t a_{ii} [\bar{N}_f v^i + q(\delta^{ij} + v^i v^j) \bar{V}^j], \quad (\text{A10})$$

where we have used the identity $V^\mu u_\mu = 0$. Equations (A9) and (A10) have to be solved iteratively for (\bar{V}^i, \bar{E}^i) . It is interesting to note that the implicit solution (A9) is consistent with the known solutions in the following two limits. In the limit $\tau_V \rightarrow 0$, the term V^i on the right-hand side can be neglected, yielding the Navier-Stokes form of Ohm's law, $q\bar{V}^i = \sigma\bar{E}^i$. On the other hand, in the limit of $\tau_V \rightarrow \infty$, the implicit step is trivial, $\bar{V}^i = V^i$, and the charge-diffusion current decouples from the electric field.

One crucial step remains before we arrive at the final solution of the system (15) of equations of motion. We describe this in the following. We note that the solution of the conserved quantities $Y = (e, M^i, N_f, B^i)$ at time $t = (n+1)\Delta t$ is obtained by simply evolving Eq. (15) using the explicit time stepping. However, after the explicit time step, the diffusion current and electric field only assume an approximate solution (V^i, E^i) according to Eq. (A6). The implicit inversion step, giving rise to Eqs. (A9) and (A10), depends on the velocity v^i , which is not explicitly known, even after the explicit time step. The way to determine v^i , as well as other variables in the local rest frame, such as the energy density and particle number density (which are needed to compute the pressure P via the equation of state), is similar to the one presented in Refs. [48,64]. It is essentially a nested fixed-point iteration procedure and can be summarized by the following steps:

- (1) Adopt as an initial guess for the velocity its value at the previous time step, which we denote by v_\star^i . The diffusion current and electric field (\bar{V}^i, \bar{E}^i) are then computed via Eqs. (A9) and (A10) as functions of (V^i, v_\star^i, E^i) via fixed-point iteration.
- (2) Subtract the Poynting flux and the electromagnetic energy density from the conserved variables, and define new variables as follows:

$$M'^i = M^i - \epsilon^{ijk} E_j B_k \equiv \gamma^2 w v^i, \quad (\text{A11})$$

$$e' = e - \frac{1}{2}(E^2 + B^2) \equiv \gamma^2 w - P. \quad (\text{A12})$$

The variables (e', M'^i) simply correspond to the conserved variables in ideal relativistic fluid dynamics and the velocity v^i is computed by the standard fixed-point iteration procedure often used in the literature; see, e.g., Refs. [48,65].

- (3) Replace v_\star^i with the velocity v^i obtained from step 2, and repeat steps 1–3, until the variables $(\bar{V}^i, v^i, \bar{E}^i)$ have converged within a given tolerance limit (in our case 10^{-7}).

The approach discussed above is a simple procedure that can be implemented straightforwardly and works well if the inverse plasma β -parameter $B^2/(2P)$ is not too large. In the cases studied by us, convergence was reached within ten to 50 iterations depending on the values of σ and τ_V .

APPENDIX B: TEST CASES

In this section, two one-dimensional test cases (see, e.g., Refs. [47–49]) are presented. For all results presented here, the fluxes $F_{X,Y}^j$ are determined via the Godunov-type Harten-Lax-van Leer-Einfeldt algorithm [66]. As in ideal MHD, the numerical calculation implements total-variation-diminishing methods for the reconstruction of the solution. We use an ideal equation of state $P = (\Gamma - 1)\epsilon$, where Γ is the adiabatic index. We use an extreme $\Gamma = 2$, which corresponds to the speed of sound $c_s^2 \equiv \Gamma - 1 = 1$. Our time step is $\Delta t = \lambda_{\text{CFL}} \Delta x$, with Courant-Friedrichs-Lewy number $\lambda_{\text{CFL}} = 0.1$.

1. Shock-tube problem

For the shock-tube problem with discontinuity at $x = 0$ we take the initial pressure and magnetic field on the left (L)- and right (R)-hand side (in dimensionless units) as

$$(P^L, B_y^L) = (1.0, 0.1), \quad (\text{B1})$$

$$(P^R, B_y^R) = (0.1, -0.1), \quad (\text{B2})$$

while other fields are set to 0. We compare our results to the exact solution of the ideal-MHD Riemann problem presented in Ref. [67]. The calculation runs from initial time $t = 0$ to the final time $t = 0.4$. The grid spacing is set to $\Delta x = 0.002$.

In Fig. 10, we take the relaxation time $\tau_V = 10^{-3}$ to be small in order to compare the results with the Navier-Stokes form of Ohm's law. The electrical conductivity ranges from $\sigma = 0$ corresponding to vacuum to $\sigma = 10^6$, approximately corresponding to the ideal-MHD case. The top row of Fig. 10 shows the magnetic field (left panel) and the electric field (right panel) at time $t = 0.4$. One notices that for $\sigma = 0$ the solution describes a discontinuity propagating at the speed of light to the left and the right, corresponding to the solution of Maxwell's equations in vacuum. As the conductivity increases, the solution approaches the ideal-MHD one. The bottom row of Fig. 10 shows the pressure (left panel) and the velocity (right panel). Since the inverse plasma β -parameter for this setup is small, the effect of the magnetic field on these fluid-dynamical variables is small, and all curves resemble those from the ideal-MHD Riemann problem.

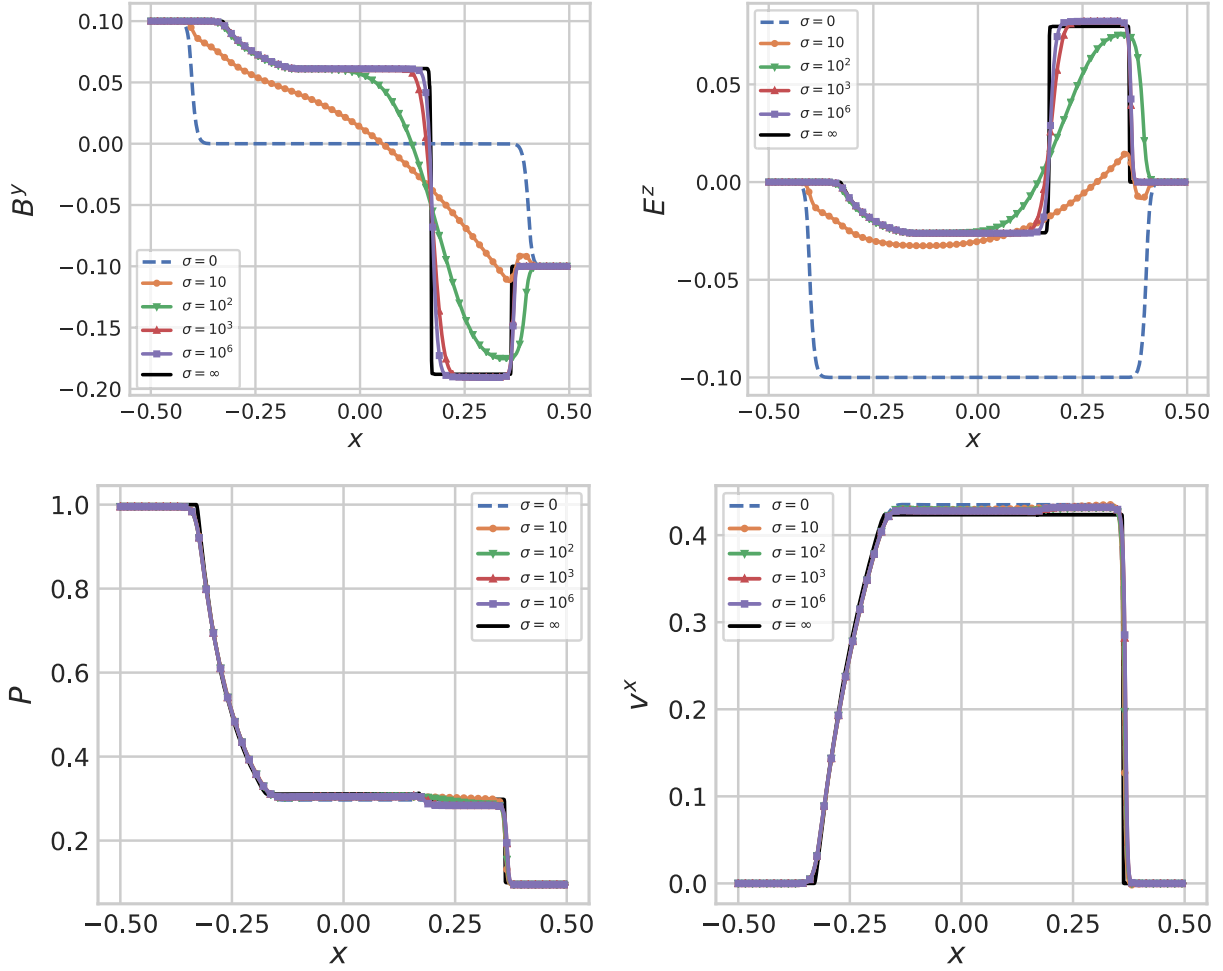


FIG. 10. Top row: magnetic-field component B^y (left panel) and electric-field component E^z for the shock-tube problem at $t = 0.4$. Different lines refer to different values of the conductivity for $\tau_V = 10^{-3}$. Bottom row: same as top row, but for the pressure P (left panel) and the fluid velocity v^x (right panel).

In Fig. 11 the initial conditions are the same as for Fig. 10, except that we now solve the Riemann problem for a constant conductivity $\sigma = 10^2$ and different relaxation times τ_V . The two cases of small $\tau_V = 10^{-2}$ and 10^{-3} yield almost identical results, but for larger τ_V we see oscillations appearing in the solution, which can be traced back to the fact that in this regime the diffusion current is underdamped, which then backreacts to the electromagnetic fields.

Further, in Fig. 12 we consider the same initial condition as in the previous two cases, but now with a nonuniform conductivity, $\sigma = \sigma_0 \rho^\delta$, where ρ is a solution of the advection equation $\partial_t \rho + \partial_j (\rho v^j) = 0$ with initial condition $\rho^L = 1.0$, $\rho^R = 0.125$. Furthermore, $\sigma_0 = 10^3$, $\tau_V = 10^{-3}$, and $\delta = 6$. The resulting conductivity σ and B^y at time $t = 0.4$ are shown in Fig. 12. It should be stressed that because of the functional dependence of σ on ρ , the region on the left, i.e., $x < 0$, has a very high conductivity at this time and, thus, the numerical solution tends to the ideal-MHD case. The opposite happens in the right region, i.e., $x > 0$, where the conductivity is lower and the solution

tends toward the vacuum one. The results presented in Fig. 12 show that our algorithm can handle nonuniform conductivity profiles even in the presence of shocks.

Finally, we also perform a comparison between the IMEX and the Strang-splitting approaches. In Fig. 13 we show the L^1 -norm of the difference between the numerical solution obtained from both schemes with the ideal-MHD exact solution, for different values of the conductivity with $\Delta x = 0.003$ and $\tau_V = 10^{-3}$ (in dimensionless units). The $L^1(B^y)$ is defined as

$$L^1(B^y) = \frac{1}{N} \sum_i^N |B^y(x_i) - B_{\text{id-MHD}}^y(x_i)|, \quad (\text{B3})$$

where N is the total number of cells. First, the reported difference between the numerical solution for the resistive MHD equations and the ideal-MHD equations should not be interpreted as an error given that the ideal-MHD solution is not the correct solution of the equations at finite

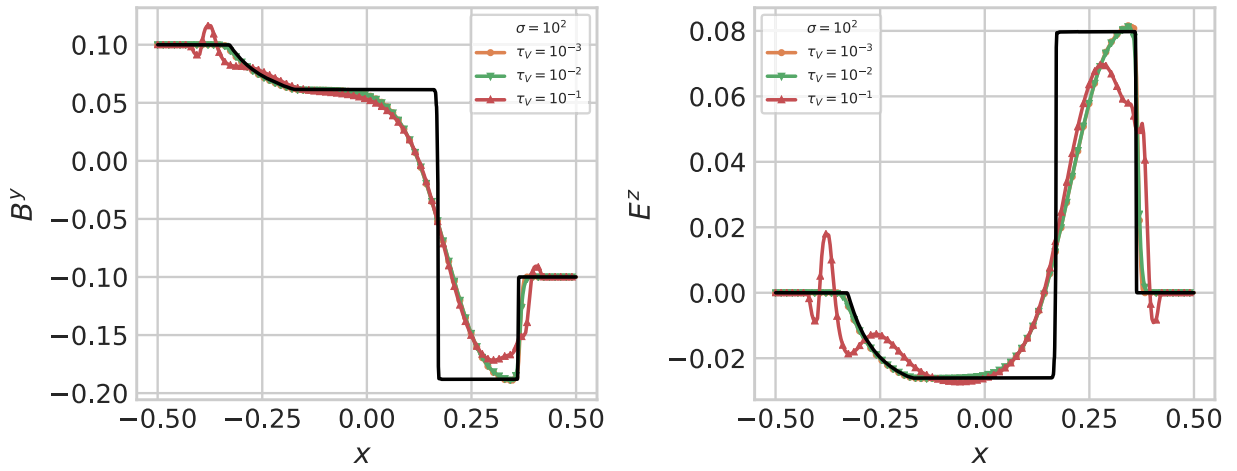


FIG. 11. Same as Fig. 10, but now with constant $\sigma = 10^2$ and different τ_v .

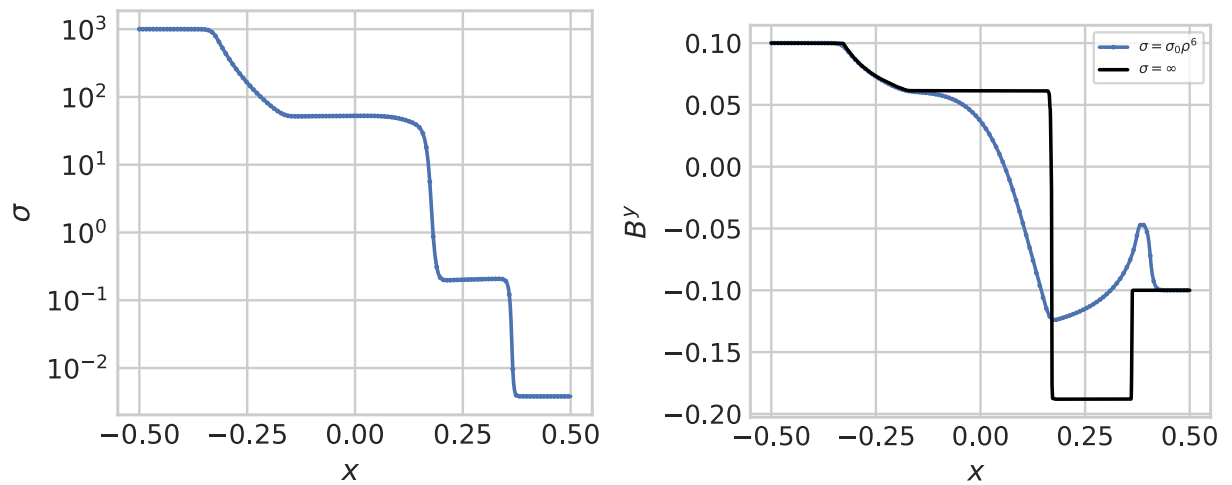


FIG. 12. Left panel: profile of a nonuniform conductivity σ for the shock-tube problem. Right panel: the magnetic-field component B^y for the conductivity profile as in the left panel.

conductivity. This is particularly prominent for the lower conductivity values and improves as we increase the value of conductivity. Furthermore, we did not find any numerical instability in the IMEX method for σ ranging from 0 to 10^{11} within the above resolution. For the Strang-splitting technique the solutions become unstable and no numerical solution could be obtained already for moderately high values of the conductivity, i.e., beyond $\sigma > 10^4$. Our results are in agreement with similar conclusions found previously in Ref. [48]. Also, we note that the difference between the numerical solution for the IMEX scheme and the exact ideal-MHD solution saturates between $\sigma \sim 10^5$ – 10^6 . This emphasizes the fact that to gain more accuracy one needs to increase the resolution.

2. Self-similar current sheet

In this test case, it is assumed that the magnetic pressure is much smaller than that of the fluid, i.e., $B^2 \ll P$, so that

the background fluid is not influenced by the evolution of the magnetic field. We assume that the magnetic field has the form $\mathbf{B} = (0, B^y(x, t), 0)$, with $B^y(x, 0) = B_0 \operatorname{sgn}(x)$, while the fluid pressure is constant. If one assumes that the conductivity σ is large, one can find an approximate solution for the magnetic field [47,48]

$$B^y(x, t) = B_0 \operatorname{erf}\left(\frac{1}{2} \sqrt{\frac{\sigma}{\xi}}\right), \quad (\text{B4})$$

while the electric field evolves as

$$E^z(x, t) = \frac{B_0}{\sqrt{\pi \sigma t}} \exp\left(-\frac{\sigma}{4\xi}\right), \quad (\text{B5})$$

where $\xi = t/x^2$. Note that in the derivation of the above solution one has neglected the displacement current (thus the evolution equation of the magnetic field is not

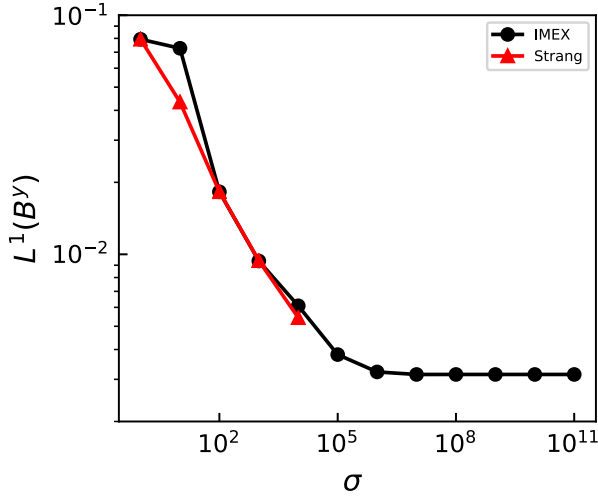


FIG. 13. $L^1(B^y)$ norm of the magnetic-field component B^y between the numerical solution computed from the Strang-splitting technique and the IMEX schemes and the exact solution of the shock tube in the ideal-MHD limit as a function of conductivities. The Strang-splitting technique does not yield a stable solution for conductivities values larger than 10^4 .

hyperbolic anymore) and one has used the Navier-Stokes form of Ohm's law. Although only an approximate solution, comparing it with the numerical solution will allow us to discuss various regimes of our resistive MHD description.

We initialize the electromagnetic fields according to Eqs. (B4) and (B5) at time $t = 10^{-3}$ with $B_0 = 0.1$ and constant fluid pressure $P = 40.0$, along a spatial grid ranging from $[-3.5, 3.5]$ with $\Delta x = 0.001$. The left panel of Fig. 14 shows the magnetic field at time $t = 2$ for three values of the damping ratio ζ_d . Since the solution (B4) is valid for large values of σ the analytical and numerical

results match very well for $\zeta_d < 1$. For $\zeta_d > 1$ and $\zeta_d = 1$, the numerical solution is more diffusive and thus not captured by the analytical solution. The right panel of Fig. 14 shows the electric field. In the underdamped case $\zeta_d < 1$ we observe oscillations at the left and right edges of the grid. These oscillation die out at late times and the analytical and numerical results are in perfect agreement.

APPENDIX C: EQUATIONS OF MOTION IN MILNE COORDINATES

In Milne coordinates, and assuming transverse homogeneity, the system of equations of motion (1), (2), (9), (10), and (12) of relativistic resistive second-order dissipative MHD can be cast into the following form:

$$\partial_\tau(U) + \partial_\eta(F^\eta(U)) = S(U), \quad (C1)$$

where U represents the vector of conserved variables and F^η that of the fluxes,

$$U = \begin{pmatrix} \tau e \\ \tau M^x \\ \tau M^y \\ \tau^3 M^\eta \\ N_f \\ V^i \\ \tau \tilde{B}^y \\ \tau \tilde{B}^x \\ \tau \tilde{E}^y \\ \tau \tilde{E}^x \end{pmatrix}, \quad F^\eta(U) = \begin{pmatrix} \tau F_e^\eta \\ \tau F_M^{x\eta} \\ \tau F_M^{y\eta} \\ \tau^3 F_M^{\eta\eta} \\ v^\eta N_f \\ v^\eta V^i \\ \tilde{E}_x \\ -\tilde{E}_y \\ -\tilde{B}_x \\ \tilde{B}_y \end{pmatrix},$$

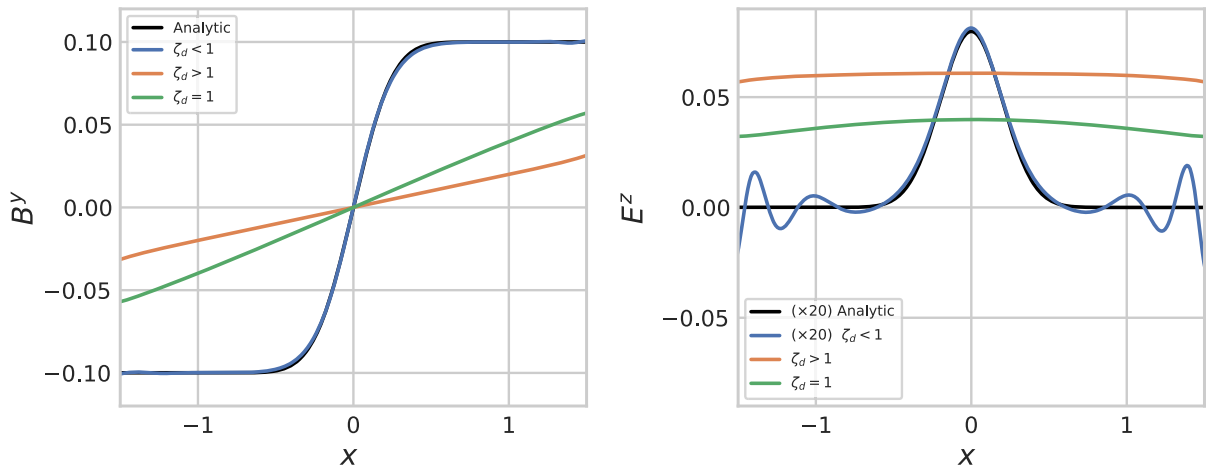


FIG. 14. Left panel: the magnetic-field component B^y at $t = 2$ for the test case of a self-similar current sheet, for three different values of the damping ratio $\zeta_d = 1/(2\sqrt{\sigma\tau_V})$. For the underdamped case ($\zeta_d < 1$) we took $\sigma = 100$, for the overdamped case ($\zeta_d > 1$) we took $\sigma = 0.5$, while for the critical case ($\zeta_d = 1$) we have $\sigma = 1.25$. For all cases $\tau_V = 0.2$. The black solid line is the analytic solution discussed in the text. Right panel: same as in the left panel, but for the electric-field component E^z .

while the sources read

$$S(\mathbf{U}) = \begin{pmatrix} 0 \\ 0 \\ 0 \\ -\tau^2 F_M^{\eta\eta} \\ -N_f/\tau - \partial_i(-v^i V^0 + V^i) \\ (\sigma \tilde{\mathcal{E}}^i + q\kappa \nabla^i \alpha - qV^i)/(q\tau v\gamma) + V^i \partial_j v^j - u^i V^\nu \dot{u}_\nu - G_n^i/\gamma \\ 0 \\ 0 \\ -\tau J_f^y \\ -\tau J_f^x \end{pmatrix}.$$

Here, $G_n^i = u^\alpha \Gamma_{\alpha\beta}^i V^\beta$ are additional geometrical source terms, where $\Gamma_{\alpha\beta}^\mu$ are the Christoffel symbols for Milne coordinates. Additionally, we have the constraint equations

$$\partial_\eta \tilde{E}^\eta = 0, \quad (\text{C2})$$

$$\partial_\eta \tilde{B}^\eta = 0, \quad (\text{C3})$$

where we have assumed that the system has zero net charge. The definition of the conserved quantities e , M^i , and N_f and the fluxes F_e^i and F_M^{ij} are the same as in Cartesian coordinates. The definition of the electromagnetic fields with a tilde comes from the coordinate transformation (35) from Cartesian to Milne coordinates.

-
- [1] D. E. Kharzeev, L. D. McLerran, and H. J. Warringa, *Nucl. Phys.* **A803**, 227 (2008).
- [2] V. Skokov, A. Y. Illarionov, and V. Toneev, *Int. J. Mod. Phys. A* **24**, 5925 (2009).
- [3] V. Voronyuk, V. D. Toneev, W. Cassing, E. L. Bratkovskaya, V. P. Konchakovski, and S. A. Voloshin, *Phys. Rev. C* **83**, 054911 (2011).
- [4] A. Bzdak and V. Skokov, *Phys. Lett. B* **710**, 171 (2012).
- [5] L. Ou and B.-A. Li, *Phys. Rev. C* **84**, 064605 (2011).
- [6] J. Błoczyński, X.-G. Huang, X. Zhang, and J. Liao, *Phys. Lett. B* **718**, 1529 (2013).
- [7] J. Błoczyński, X.-G. Huang, X. Zhang, and J. Liao, *Nucl. Phys.* **A939**, 85 (2015).
- [8] K. Fukushima, D. E. Kharzeev, and H. J. Warringa, *Phys. Rev. D* **78**, 074033 (2008).
- [9] D. E. Kharzeev, J. Liao, S. A. Voloshin, and G. Wang, *Prog. Part. Nucl. Phys.* **88**, 1 (2016).
- [10] B. I. Abelev *et al.* (STAR Collaboration), *Phys. Rev. Lett.* **103**, 251601 (2009).
- [11] S. Acharya *et al.* (ALICE Collaboration), *J. High Energy Phys.* **09** (2020) 160.
- [12] J. Zhao and F. Wang, *Prog. Part. Nucl. Phys.* **107**, 200 (2019).
- [13] W. Li and G. Wang, *Annu. Rev. Nucl. Part. Sci.* **70**, 293 (2020).
- [14] A. Bzdak, S. Esumi, V. Koch, J. Liao, M. Stephanov, and N. Xu, *Phys. Rep.* **853**, 1 (2020).
- [15] K. Tuchin, *Adv. High Energy Phys.* **2013**, 490495 (2013).
- [16] W.-T. Deng and X.-G. Huang, *Phys. Rev. C* **85**, 044907 (2012).
- [17] M. Shokri, *J. High Energy Phys.* **01** (2020) 011.
- [18] K. Hattori, M. Hongo, and X.-G. Huang, *Symmetry* **14**, 1851 (2022).
- [19] H. Alfvén, *Nature (London)* **150**, 405 (1942).
- [20] A. Anile and P. Landshoff, *Relativistic Fluids and Magneto-Fluids: With Applications in Astrophysics and Plasma Physics*, Cambridge Monographs on Mathematical Physics (Cambridge University Press, Cambridge, England, 1989).
- [21] G. S. Denicol and D. H. Rischke, *Microscopic Foundations of Relativistic Fluid Dynamics*, Lecture Notes in Physics (Springer, Cham, 2021).
- [22] J. Hernandez and P. Kovtun, *J. High Energy Phys.* **05** (2017) 001.
- [23] X.-G. Huang, A. Sedrakian, and D. H. Rischke, *Ann. Phys. (Amsterdam)* **326**, 3075 (2011).
- [24] S. I. Finazzo, R. Critelli, R. Rougemont, and J. Noronha, *Phys. Rev. D* **94**, 054020 (2016); **96**, 019903(E) (2017).
- [25] S. Grodzanov, D. M. Hofman, and N. Iqbal, *Phys. Rev. D* **95**, 096003 (2017).
- [26] W. Israel, *Ann. Phys. (N.Y.)* **100**, 310 (1976).

- [27] F. S. Bemfica, F. S. Bemfica, M. M. Disconzi, M. M. Disconzi, J. Noronha, and J. Noronha, *Phys. Rev. D* **100**, 104020 (2019); **105**, 069902(E) (2022).
- [28] G. S. Denicol, H. Niemi, E. Molnar, and D. H. Rischke, *Phys. Rev. D* **85**, 114047 (2012); **91**, 039902(E) (2015).
- [29] W. Israel and J. M. Stewart, *Ann. Phys. (N.Y.)* **118**, 341 (1979).
- [30] B. Betz, D. Henkel, and D. H. Rischke, *J. Phys. G* **36**, 064029 (2009).
- [31] A. Jaiswal, R. S. Bhalerao, and S. Pal, *Phys. Rev. C* **87**, 021901 (2013).
- [32] S. Pu, T. Koide, and D. H. Rischke, *Phys. Rev. D* **81**, 114039 (2010).
- [33] G. S. Denicol, X.-G. Huang, E. Molnár, G. M. Monteiro, H. Niemi, J. Noronha, D. H. Rischke, and Q. Wang, *Phys. Rev. D* **98**, 076009 (2018).
- [34] G. S. Denicol, E. Molnár, H. Niemi, and D. H. Rischke, *Phys. Rev. D* **99**, 056017 (2019).
- [35] A. K. Panda, A. Dash, R. Biswas, and V. Roy, *J. High Energy Phys.* **03** (2021) 216.
- [36] A. K. Panda, A. Dash, R. Biswas, and V. Roy, *Phys. Rev. D* **104**, 054004 (2021).
- [37] A. Das, S. S. Dave, P. S. Saumia, and A. M. Srivastava, *Phys. Rev. C* **96**, 034902 (2017).
- [38] G. Inghirami, L. Del Zanna, A. Beraudo, M. H. Moghaddam, F. Becattini, and M. Bleicher, *Eur. Phys. J. C* **76**, 659 (2016).
- [39] G. Inghirami, M. Mace, Y. Hirono, L. Del Zanna, D. E. Kharzeev, and M. Bleicher, *Eur. Phys. J. C* **80**, 293 (2020).
- [40] E. R. Most and J. Noronha, *Phys. Rev. D* **104**, 103028 (2021).
- [41] K. Nakamura, T. Miyoshi, C. Nonaka, and H. R. Takahashi, [arXiv:2211.02310](https://arxiv.org/abs/2211.02310).
- [42] Z. Wang, J. Zhao, C. Greiner, Z. Xu, and P. Zhuang, *Phys. Rev. C* **105**, L041901 (2022).
- [43] L. Yan and X.-G. Huang, [arXiv:2104.00831](https://arxiv.org/abs/2104.00831).
- [44] C. Grayson, M. Formanek, J. Rafelski, and B. Mueller, *Phys. Rev. D* **106**, 014011 (2022).
- [45] C. W. Misner, K. S. Thorne, and J. A. Wheeler, *Gravitation* (W. H. Freeman, San Francisco, 1973).
- [46] P. Yodzis, *Phys. Rev. D* **3**, 2941 (1971).
- [47] S. S. Komissarov, *Mon. Not. R. Astron. Soc.* **382**, 995 (2007).
- [48] C. Palenzuela, L. Lehner, O. Reula, and L. Rezzolla, *Mon. Not. R. Astron. Soc.* **394**, 1727 (2009).
- [49] M. Takamoto and T. Inoue, *Astrophys. J.* **735**, 113 (2011).
- [50] D. Forster, *Hydrodynamic Fluctuations, Broken Symmetry, and Correlation Functions*, Frontiers in Physics: A Lecture Note and Reprint Series (W. A. Benjamin, Boca Raton, 1975).
- [51] M. A. Aziz and S. Gavin, *Phys. Rev. C* **70**, 034905 (2004).
- [52] G. Aarts and A. Nikolaev, *Eur. Phys. J. A* **57**, 118 (2021).
- [53] L. Rezzolla and O. Zanotti, *Relativistic Hydrodynamics* (Oxford University Press, New York, 2013).
- [54] T. Jahnke and C. Lubich, *BIT* **40**, 735 (2000).
- [55] L. Pareschi and G. Russo, *J. Sci. Comput.* **25**, 129 (2005).
- [56] Y. Liu, C. Greiner, and C. M. Ko, [arXiv:1403.4317](https://arxiv.org/abs/1403.4317).
- [57] J. Schwinger, L. Deraad, K. Milton, and W. Tsai, *Classical Electrodynamics*, Frontiers in Physics (CRC Press, Boca Raton, 2019).
- [58] U. Gursoy, D. Kharzeev, and K. Rajagopal, *Phys. Rev. C* **89**, 054905 (2014).
- [59] J. D. Bjorken, *Phys. Rev. D* **27**, 140 (1983).
- [60] H. T. Ding, A. Francis, O. Kaczmarek, F. Karsch, E. Laermann, and W. Soeldner, *Phys. Rev. D* **83**, 034504 (2011).
- [61] A. Amato, G. Aarts, C. Allton, P. Giudice, S. Hands, and J.-I. Skullerud, *Phys. Rev. Lett.* **111**, 172001 (2013).
- [62] V. Roy, S. Pu, L. Rezzolla, and D. Rischke, *Phys. Lett. B* **750**, 45 (2015).
- [63] R. J. Spiteri and S. J. Ruuth, *SIAM J. Numer. Anal.* **40**, 469 (2003).
- [64] K. Dionysopoulou, D. Alic, C. Palenzuela, L. Rezzolla, and B. Giacomazzo, *Phys. Rev. D* **88**, 044020 (2013).
- [65] E. Molnar, H. Niemi, and D. H. Rischke, *Eur. Phys. J. C* **65**, 615 (2010).
- [66] A. Harten, *SIAM J. Numer. Anal.* **21**, 1 (1984).
- [67] B. Giacomazzo and L. Rezzolla, *J. Fluid Mech.* **562**, 223 (2006).