

Scintillation efficiency measurement of Na recoils in NaI(Tl) below the DAMA/LIBRA energy threshold

Jingke Xu,^{1,*} Emily Shields,¹ Frank Calaprice,¹ Shawn Westerdale,¹ Francis Froberg,¹ Burkhan Suerfu,¹ Thomas Alexander,^{2,3} Ani Aprahamian,⁴ Henning O. Back,¹ Clark Casarella,⁴ Xiao Fang,⁴ Yogesh K. Gupta,^{4,†} Aldo Ianni,⁵ Edward Lamere,⁴ W. Hugh Lippincott,³ Qian Liu,⁴ Stephanie Lyons,⁴ Kevin Siegl,⁴ Mallory Smith,⁴ Wanpeng Tan,⁴ and Bryant Vande Kolk⁴

¹*Department of Physics, Princeton University, Princeton, New Jersey 08544, USA*

²*Amherst Center for Fundamental Interactions and Physics Department, Amherst, Massachusetts 01003, USA*

³*Fermi National Accelerator Laboratory, Batavia, Illinois 60510, USA*

⁴*Department of Physics, University of Notre Dame, Notre Dame, Indiana 46556, USA*

⁵*INFN Laboratori Nazionali del Gran Sasso, SS 17 bis Km 18_910, 067010 Assergi, Italy*

(Received 25 March 2015; revised manuscript received 2 June 2015; published 30 July 2015)

The dark matter interpretation of the DAMA modulation signal depends on the NaI(Tl) scintillation efficiency of nuclear recoils. Previous measurements for Na recoils have large discrepancies, especially in the DAMA/LIBRA modulation energy region. We report a quenching effect measurement of Na recoils in NaI(Tl) from 3 to 52 keV_{nr}, covering the whole DAMA/LIBRA energy region for dark matter-Na scattering interpretations. By using a low-energy, pulsed neutron beam, a double time-of-flight technique, and pulse-shape discrimination methods, we obtained the most accurate measurement of this kind for NaI(Tl) to date. The results differ significantly from the DAMA reported values at low energies but fall between the other previous measurements. We present the implications of the new quenching results for the dark matter interpretation of the DAMA modulation signal.

DOI: [10.1103/PhysRevC.92.015807](https://doi.org/10.1103/PhysRevC.92.015807)

PACS number(s): 29.40.Mc, 95.35.+d, 78.70.Ps

I. INTRODUCTION

For over a decade, the DAMA experiments (DAMA-NaI and DAMA/LIBRA) have been observing an annual modulation in the rate of events in the low-energy region of NaI(Tl) detectors [1]. This modulation signal has an extremely high statistical significance (9.3σ) and is often interpreted as evidence for interactions of weakly interacting massive particles (WIMPs), such as low mass WIMP scattering [2] or inelastic WIMP scattering [3,4]. Several experiments have ruled out the DAMA dark matter claim in the standard WIMP picture [5–8], while alternative WIMP theories might still reconcile the experimental results [9,10].

The dark matter interpretation of the DAMA modulation signal depends on the scintillation efficiency of NaI(Tl) for sodium and iodine recoils relative to that of γ s (electron recoils); the former could be induced by WIMP scattering interactions, while the latter are used to calibrate the detectors. Nuclear recoils in NaI(Tl), due to the small fraction of energy transfer to electrons, typically produce less scintillation light compared with electron recoils with the same energy deposition. The relative ratio is usually referred to as the nuclear recoil quenching factor. This factor is critical to translate the observed electron equivalent energy into nuclear recoil energy for dark matter analysis.

DAMA reports a quenching factor of 0.3 for sodium recoils and 0.09 for iodine recoils [11]. These results were obtained by exposing a NaI(Tl) detector to neutrons from a ^{252}Cf source. The nuclear recoil signals produced by the

neutrons were compared to Monte Carlo–simulated sodium and iodine recoil spectra to extract the quenching factors, which were assumed to be energy independent. Since then, several more experiments have been carried out to measure the sodium and iodine quenching factors as a function of nuclear recoil energy using monoenergetic neutron sources, mostly deuterium-deuterium neutron generators [12–16]. By looking for coincidence signals between a NaI(Tl) detector and neutron detectors at fixed neutron scattering angles, this technique could provide a direct measurement of the DAMA modulation energy scale if the signal is interpreted as nuclear recoils. A few of these measurements reported quenching factors consistent with the DAMA results, especially in energy regions higher than 20-keV nuclear recoil energy (20 keV_{nr}). However, recent measurements by Chagani [17] and Collar [18] led to new Na recoil quenching factors significantly deviating from the DAMA values over a wide energy range, and these two new measurements also conflict seriously with each other at low energies, where the DAMA modulation signals occur in a light WIMP interpretation.

In addition to these inconsistencies, the previous Na recoil quenching measurements in NaI(Tl) typically carry large uncertainties, ranging from $\sim 10\%$ (relative) to, at the lowest energies, over 100% (relative). Therefore, it is necessary to conduct new quenching measurements that can significantly improve the quenching-factor accuracy and provide a reliable Na recoil calibration for the light WIMP interpretation of the DAMA results, as well as for other NaI(Tl) dark matter experiments [19–23].

In this paper, we report a NaI(Tl) quenching measurement using a pulsed neutron beam produced by the FN tandem facility at the University of Notre Dame Nuclear Science Laboratory. This measurement was designed to achieve an overall uncertainty of $\sim 5\%$ and an energy threshold of a

*Corresponding author: jingkexu@princeton.edu

[†]Permanent address: Nuclear Physics Division, BARC, Mumbai 400085, India.

few keV_{nr} . Several techniques were combined to suppress backgrounds and uncertainties, as summarized below:

- (i) A triple time coincidence of a pulsed neutron beam, a NaI(Tl) detector, and an angular array of neutron detectors was used to select neutron events and to reduce random coincidence backgrounds.
- (ii) Low-energy neutrons ($\sim 690 \text{ keV}$) were used so that low-energy nuclear recoils ($< 50 \text{ keV}_{\text{nr}}$) could be obtained at large neutron scattering angles and the relative angular uncertainties were reduced.
- (iii) A small NaI(Tl) crystal (25-mm cube) was used to reduce multiple scattering backgrounds.
- (iv) A high-quantum-efficiency photomultiplier tube (PMT) was used to enhance light collection (~ 18 photoelectrons/keV with a γ source).
- (v) Pulse-shape discrimination (PSD) methods were used to select neutrons events and to reject γ s and noise.

This experiment was inspired by the success of the SCENE experiments, which measured the nuclear recoil quenching effects in liquid argon down to very low nuclear recoil energy ($\sim 10 \text{ keV}_{\text{nr}}$) using the Notre Dame facility [24,25].

II. EXPERIMENTAL SETUP

A. Overview

The measurement of the Na quenching factor was performed at the FN Tandem accelerator at the University of Notre Dame Institute for Structure and Nuclear Astrophysics. A pulsed beam of protons from the accelerator interacted with a LiF target to produce neutrons with an average energy of 690 keV at 0° scattering angle. A detector consisting of an enclosed NaI(Tl) crystal and photomultiplier tube (PMT) was placed on the beam line. The neutrons traveling in this direction could produce nuclear recoil scintillation events in the crystal and be subsequently detected by a liquid-scintillator-based neutron detector at a fixed recoil angle. The kinematics of this interaction determined the nuclear recoil energy.

This information, combined with the scintillation light collected by the NaI(Tl) detector, provided a measure of the light yield of the detector for nuclear recoil events. Calibrating this system with electron recoils of known energies allowed for a determination of the quenching factor. We used a single NaI(Tl) detector in two positions and a stationary array of six neutron detectors, thereby measuring 12 nuclear recoil energies. A scheme of the experimental setup in the first position configuration is shown in Fig. 1.

B. Proton beam and LiF target

A beam of 2.44-MeV protons was produced by an 11-MeV FN tandem accelerator. These protons, incident on a LiF target, produce neutrons through the ${}^7\text{Li}(p,n){}^7\text{Be}$ reaction (Q value: -1.644 MeV).

The beam was separated into time-bunched pulses by a three-part pulsing system with a timing resolution of 2 ns and an intrinsic period of 101.5 ns. The proton pulse selector can additionally be set to allow only one out of every n pulses to pass through, effectively increasing the period. The beam

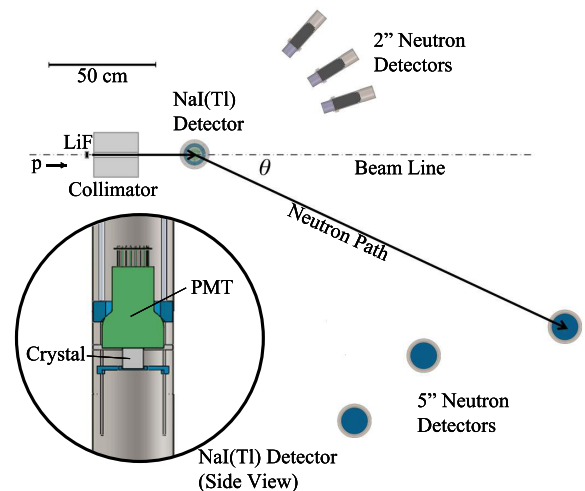


FIG. 1. (Color online) To-scale, bird's-eye view of the experimental setup in the first position configuration with side view of the NaI(Tl) detector. A LiF target in the beam produces neutrons when struck by the proton beam. The neutrons travel to the NaI(Tl) detector, where they scatter off a sodium or iodine nucleus to one of the neutron detectors positioned at the relevant angle. Two different types of neutron detectors were used, as described in the text below. A polyethylene collimator prevents neutrons from hitting the neutron detectors directly from the LiF target. Also shown is a side view of the NaI(Tl) detector, with the crystal and the PMT both labelled.

cross section is 3 mm in diameter and is highly stable, with a variation in proton energy of around 1 keV.

The energy of the beam was chosen to increase the event rate while reducing the relative angular uncertainty for nuclear recoils. Because of the finite detector size of both the NaI(Tl) detector and the neutron detectors, as well as the shape of the recoil-energy dependence on angle, the spread in the nuclear recoil energies deposited in the crystal is smaller when the neutron detectors are located at larger angles with respect to the beam. We therefore wanted the proton beam energy to produce the recoil energies of interest at relatively large scattering angles, while providing enough event rate to collect adequate statistics for the measurement. A calculation was done to obtain the overall interaction rate in the NaI(Tl) detector at low recoil energies given the ${}^7\text{Li}(p,n){}^7\text{Be}$ cross sections in Ref. [26] and the differential neutron elastic scattering cross sections in ${}^{23}\text{Na}$ and ${}^{127}\text{I}$ at the appropriate angles. A broad maximum in the event rate for all recoil energies was found at a proton energy of 2.44 MeV with reasonably large scattering angles for recoil energies between 3 and 52 keV, and therefore that energy was chosen for the measurement.

A higher pulse frequency can lead to a higher neutron event rate, but it may also cause pileup in the NaI scintillation time window. Based on a calculation of the neutron yield, we determined that a pulse separation of 609 ns was enough to reduce the pileup rate. As described in Sec. II C, the detectors were arrayed in two geometrical configurations. In the first position configuration, where the NaI(Tl) detector was 50 cm from the LiF target, the bunching ratio for the pulser was set to 1 in 6, for an effective pulse period of 609 ns, but was later

changed to 1 in 8 after a high event rate was observed for a pulse period of 812 ns. The second position configuration, with a NaI(Tl) distance of 91 cm, had a bunching ratio of 1 in 8. Each pulse carried $\sim 10^4$ protons.

The LiF target was deposited on a 0.4-mm tantalum backing, which stops the proton beam and minimizes the γ background. Incoming protons lose energy as they travel through the LiF target, leading to a broadening of the outgoing neutron energy spectrum. The LiF target thickness was chosen to be 0.52 mg/cm^2 in order to compromise between the event rate and the spread in the neutron energy, which both increase with thickness. The mean neutron energy for a target thickness of 0.52 mg/cm^2 was calculated to be 690 keV with a spread of 4% at the full-width at half-maximum. At that thickness, and with a bunching ratio of 1 in 8, the neutron flux was calculated to be around 300 neutrons/s at the NaI(Tl) detector for the first position configuration and about 100 neutrons/s in the second.

C. Detectors

The NaI(Tl) detector consisted of a 25-mm cubical NaI(Tl) crystal optically coupled to a 76-mm super-bialkali Hamamatsu R6233-100 PMT. The crystal was grown at Radiation Monitoring Devices Inc. with high-purity astro-grade NaI powder from Sigma Aldrich. The small crystal size was chosen to minimize the probability of neutron multiple scattering. The crystal and the PMT were packaged in a stainless-steel enclosure with a thin wall ($\sim 0.5 \text{ mm}$) in the section surrounding the crystal to further minimize the chance of multiple scatters.

A high light-collection efficiency of the detector is necessary to obtain a high energy resolution and low threshold. The PMT had a high peak quantum efficiency of $\sim 35\%$. In addition, the crystal was covered on the other five faces with highly reflective Lumirror reflector ($>98\%$ reflective above 350 nm) additionally wrapped in several layers of PTFE tape. No light guide was used in this experiment; the coupling was a transparent optical gel from Cargille Labs with a refractive index of 1.52. This arrangement allowed for a high maximum light yield of 18.2 ± 0.1 photoelectrons (p.e.) / keV-electron-equivalent (keV_{ee}), calibrated to 57.6-keV γ rays from ^{127}I de-excitations. When a linear scintillation response is assumed, 1 keV_{ee} is the scintillation yield that would be produced by a 1-keV electron recoil.

The NaI(Tl) detector was placed on the beam-line axis to maximize the event rate. The NaI(Tl) detector was placed 50 cm from the LiF target in the first position configuration and 91 cm in the second configuration, as described in Table I. The 50-cm position was chosen in order to produce a high event rate while keeping the total angular spread, $\Delta\theta/\theta$, below 5%. The 91-cm position was chosen to increase the number of recoil energies explored without changing the already well-established locations of the neutron detectors.

The angles chosen for the neutron detectors, between 18 and 84 deg, allowed for data to be collected for Na nuclear recoil energies between 3 and 52 keV. The detector distances were chosen to maximize the event rate while maintaining a recoil energy uncertainty due to finite detector size of less than 5%. Their positions are summarized in

TABLE I. Detector information and positions for position configurations 1 (top) and 2 (bottom). The flight distance for the neutron detectors (ND) is defined as the distance from the NaI(Tl) detector to the neutron detector, while for the NaI(Tl) detector it is the distance from the LiF target to the NaI(Tl) detector. The neutron detectors are cylindrical Eljen detectors with EJ-301 as the scintillator and EJ-510 as the reflector. The detector size given is both the diameter and length of the cylinder.

Detector	Detector size (cm)	Scattering angle (deg)	Recoil energy (keV)	Flight distance (cm)
NaI(Tl)	2.5	0		50
		0		91
ND1	12.7	59.1	29.0	150
		74.2	43.0	135
ND2	12.7	41.3	15.0	150
		54.4	24.9	122
ND3	12.7	24.9	5.7	200
		31.1	8.8	164
ND4	5.1	47.9	19.4	70
		84.0	51.8	52
ND5	5.1	32.2	9.1	70
		64.6	33.3	41
ND6	5.1	18.2	2.9	70
		41.1	14.3	33

Table I. Two types of neutron detectors were used for the measurement: $5.1 \text{ cm} \times \phi 5.1 \text{ cm}$ Eljen 510-20x20-9/301 and $12.7 \text{ cm} \times \phi 12.7 \text{ cm}$ Eljen 510-50x 50-1/301 liquid scintillator detectors. Both types have the reflector EJ-510 and the liquid scintillator EJ-301, a xylene-based scintillator with organic fluors. This scintillator has pulse-shape discrimination capability, which allows for the selection of events induced by desired particle types. A typical light yield response of these detectors was measured to be $\sim 1 \text{ p.e./keV}_{ee}$.

A 22-cm-diameter, 22-cm-long, cylindrical polyethylene collimator with a 2.5-cm-diameter hole was used to prevent neutrons from traveling directly from the LiF target to the neutron detectors.

D. Electronics and data acquisition

The data acquisition system needed to provide an accurate determination of the event energy and timing, as well as the particle type through pulse-shape discrimination. This could be achieved by recording the waveforms from the photomultiplier tube signals in both the NaI(Tl) and the neutron detectors, as well as the signal from the proton pulse selector, during neutron-induced scintillation events. The data acquisition scheme is shown in Fig. 2. Signals from both the NaI(Tl) and the neutron detectors were amplified and fanned out. One copy of the signals was used to produce a trigger for a CAEN V1720E digitizer module (12 bit, 250 MS/s), while the other copy was digitized. For each trigger, a signal region of $8 \mu\text{s}$ with $2 \mu\text{s}$ before the trigger was digitized to ensure that the entire NaI(Tl) scintillation event was recorded (scintillation lifetime $\tau = 200\text{--}300 \text{ ns}$).

The PMT signal from the NaI(Tl) detector was amplified with a $\times 10$ front-end amplifier module developed at the

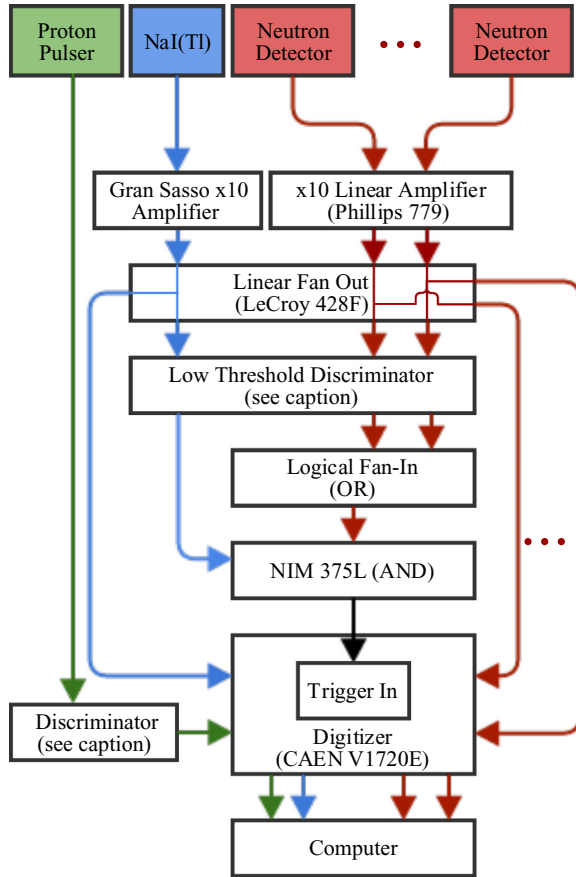


FIG. 2. (Color online) Electronics scheme for the measurement. The NaI(Tl) signal was fed through a front-end amplifier module developed at LNGS. The NaI(Tl) and neutron detectors with lower gain were passed through a Phillips 711 discriminator with a threshold of 10 mV, while other neutron detectors and the proton pulse selector were passed through the LeCroy 621 AL discriminator with a higher threshold equivalent to 1–2 photoelectrons in the neutron detectors.

Laboratori Nazionali del Gran Sasso (LNGS) while the neutron detector signals were sent to a Phillips 779 $\times 10$ amplifier. Amplified signals from both detectors were sent to a LeCroy 428F linear fan-out. The signals to be used for the trigger first went to low-threshold discriminators (Phillips 711 and LeCroy 621 AL), whose discrimination levels were set at 1.5 p.e. in order to reach a low energy threshold while reducing the random coincidence rate. The discriminator outputs for the neutron detectors combined by a NIM logical fan-in whose OR output was subsequently combined with the NaI(Tl) discriminator output in a logical AND (NIM 375L). The coincidence window for this AND logic was set to 400 ns to conservatively include the neutron coincidence events with the longest time of flight. Subsequent triggers within the acquisition window were discarded. The signal from the pulsed proton beam was not used in the trigger but was recorded for off-line analysis. Due to the degradation of the proton pulse selector signal in long transmission lines, the signal was fed through a discriminator before being digitized.

A basic online analysis was performed to show the scintillation waveforms, the coincidence event rate, and the

time-of-flight spectra for all neutron detectors. The waveform data from all channels were saved to disk in a binary format in real time, to be used for off-line analysis, as discussed in Sec. III.

E. Measurement summary

Data were collected in the first position configuration for 26 h and in the second position configuration for 20 h, giving approximately 1000–4000 coincidence events per energy.

Calibrations of the light yield of the NaI(Tl) detector were taken in run by observing the 57.6-keV γ ray that comes from the first excited state of ^{127}I , which can be induced through inelastic scattering of the neutrons. The light yield of this detector was initially measured to be 18.2 p.e./keV_{ee}, but decreased over the course of the measurement to 13.7 p.e./keV_{ee} due to some degradation of the crystal from moisture exposure, and possibly also a degradation of the optical coupling. The in-run calibration compensated for the loss of light yield in the calculation of an energy spectrum for the nuclear recoil events.

Separate calibration runs with ^{133}Ba and ^{241}Am sources also observed this light-yield degradation. However, a few-percent systematic difference in the light yield between the two measurements was observed; the source calibrations showed a lower light yield than the real-time calibration with ^{127}I . One potential effect is the skewing of the peak due to the energy of the iodine recoil itself, but this effect was estimated to be at or below 1%. Another potential reason for this difference stems from the position distribution of the scintillation events; the γ s from the first excited state of ^{127}I are evenly distributed throughout the crystal, whereas the γ s from the external sources will interact within a few millimeters of the crystal edge. This effect can cause a systematic decrease in the light yield, as the light yield may be position dependent. The in-beam measurement of the 57.6-keV peak was used to calibrate our detector performance in our analysis.

After the data were collected for the measurement of the quenching factors, a separate run was conducted to measure the trigger efficiency of the NaI(Tl) detector. For low-energy NaI(Tl) scintillation events with small pulse heights, the discriminator may not register the NaI(Tl) scintillation events, thereby causing some events to be lost when no trigger is generated. This effect can be evaluated by studying the discriminator channel output as a function of the input pulse amplitudes, including for times where there is no input signal. The zero-input-threshold data are usually acquired with a random trigger, which, however, is data intensive. We have adopted an improved approach as illustrated in Fig. 3. A ^{22}Na source was placed between the 25-mm NaI(Tl) detector and a Bicron 76-mm NaI(Tl) detector. Due to the back-to-back feature of the two 511-keV γ rays from ^{22}Na , when the Bicron NaI(Tl) detector sent out a data acquisition trigger, it was likely that the 25-mm NaI(Tl) detector output contained a pulse. In the case that the Bicron detector trigger did not come from the 511-keV ^{22}Na γ ray, the trigger system was equivalent to the random trigger method. To increase the pulse rate in the 25-mm NaI(Tl) detector in the equivalent random trigger mode, ^{133}Ba and ^{241}Am sources were put near the 25-mm detector opposite

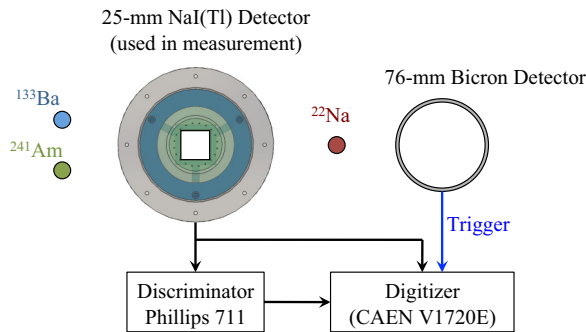


FIG. 3. (Color online) Setup for the trigger efficiency measurement. A ^{22}Na source was placed between the 25-mm NaI(Tl) detector and a 76-mm Bicorn NaI(Tl) detector so that the back-to-back 511-keV γ rays could be detected by both detectors. Signals from the 25-mm detector were fed both directly into the digitizer and also through the discriminator, while the Bicorn detector was used as a trigger. Additional radioactive sources were placed near the 25-mm detector to increase the event rate. See the text for more details.

the 76-mm detector. The analysis of this trigger efficiency measurement will be presented in Sec. III.

III. DATA ANALYSIS

As discussed in Sec. II, data from 12 neutron-scattering angles, corresponding to 12 different nuclear recoil energies, were collected in this measurement. The nuclear recoil signals in the NaI(Tl) crystal were selected using time-of-flight (TOF) and pulse-shape-discrimination (PSD) cuts. Their energy spectra were then compared to the predicted recoil-energy spectra, produced by Monte Carlo simulations, to evaluate the energy-dependent nuclear recoil quenching factors. We report the analysis of sodium recoil quenching effects in an energy window of ~ 3 to ~ 52 keV_{nr}, which covers the DAMA/LIBRA region of interest. Iodine recoils were not observed in the measurements due to their low recoil energies and larger quenching effects; limits were set on the iodine quenching factors.

A. Data processing

The raw data acquired in the measurements contain the waveforms of the NaI(Tl) detector, the waveforms of 6 liquid scintillator neutron detectors, and a periodic pulse-selector signal from the proton accelerator, which relates to the proton-on-target (POT) time with a constant offset. The waveform baselines were first subtracted using a drifting-baseline-finding algorithm, which was tuned to suppress low-frequency electronic noise while preserving high-frequency scintillation pulse signals. Individual pulses with an amplitude $\gtrsim 0.2$ photoelectrons were tagged and further processed for the analysis. For each pulse that contributed to a coincidence trigger, all following pulses within $4 \mu\text{s}$ were clustered together as one scintillation event for energy evaluation. The $4\text{-}\mu\text{s}$ time window was chosen to contain the full scintillation signals of the highest-energy events considered in this analysis.

For every coincidence event, we first tried to identify which neutron detector contributed to the trigger by comparing the pulse arrival times with the coincidence trigger time. If the signals from the responsible neutron detector and the NaI(Tl) detector satisfied certain event selection criteria, the NaI(Tl) signal is kept for the quenching factor analysis and the neutron detector position is used to determine the neutron scattering angle. The most important event selection criteria in the analysis is the cut on the TOF, or the time difference between the pulse arrival times in different detector channels. For the neutron energy used in this measurement (~ 690 keV, corresponding to a speed of ~ 1 cm/ns), the time required for the neutrons to travel from the NaI(Tl) detector to the neutron detectors was at the level of $\sim 50\text{--}200$ ns, depending on the detector positions. This well-defined time correlation made the neutron events distinct from the nearly instantaneous γ coincidence background and random coincidence backgrounds. Furthermore, the pulsed neutron beam also made it possible to calculate and cut on the TOF between the LiF target and the NaI(Tl) detector, which further suppressed the γ -ray background generated by the proton beam.

In this analysis, TOF1 was defined as the difference between the arrival times of the NaI(Tl) signal and the proton pulse signal, and TOF2, or the total TOF, was defined as the difference between the arrival times of the neutron detector signal and the proton pulse signal. In a real neutron-induced coincidence event, TOF1 represents the time (with a constant offset) required for the neutron to travel from the LiF target to the NaI(Tl) detector, and TOF2 corresponds to the time (with a similar constant offset) required for the neutron to travel from the LiF target, to scatter off the NaI(Tl) detector, and to be recorded by a liquid scintillator neutron detector.

Figure 4(a) shows the double TOF spectrum (TOF2 vs TOF1) for the coincidence events between the NaI(Tl) detector and a neutron detector containing ~ 29 keV_{nr} Na recoils. The first and second vertical bands, respectively, correspond to the γ s and neutrons that were produced by the proton beam and recorded by the NaI(Tl) detector. Because the γ -ray flight time from the target to the NaI(Tl) detector is only a few nanoseconds, the time separation between the two vertical bands provided an estimate of the neutron TOF, which was confirmed by direct calculations. The experiment was designed in a way that the γ and neutron TOF bands were sufficiently separated, so conservative TOF cuts could be used to efficiently reject the γ background with little impact on the neutron events. Events in the horizontal band with TOF2 slightly below $-0.15 \mu\text{s}$ were identified to be the beam-induced γ rays that directly hit the neutron detector in coincidence with a random NaI(Tl) scintillation event. The diagonal band with TOF2 \approx TOF1 was attributed to simultaneous scintillations in the NaI(Tl) detector and in the neutron detector from environmental radioactivity such as high-energy γ s or cosmic-ray showers. By combining the analysis using both TOF1 and TOF2, the blue (gray) box in Fig. 4(a) was identified to contain the desired neutron coincidence events where a neutron scattered off the NaI(Tl) detector and then got recorded in the neutron detector.

In addition to nuclear recoils, neutron interactions with NaI(Tl) also produced nuclear excitations via inelastic

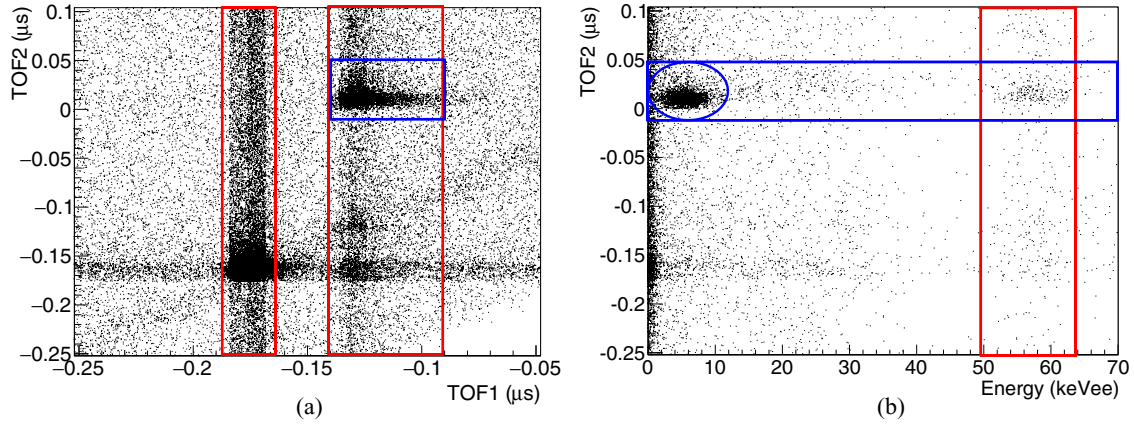


FIG. 4. (Color online) (a) The double-TOF spectrum for coincidence events containing ~ 29 keV_{nr} Na recoils. γ s (first vertical band) and neutrons (second vertical band) from the LiF can be separated by TOF1, defined as the TOF from LiF to NaI(Tl); neutron scattering off NaI(Tl) can be further selected (blue [gray] box) in the second vertical band using TOF2, defined as the total TOF from the LiF to the liquid scintillator neutron detectors. (b) The energy distribution of the neutron-induced events from the second band in panel (a). The horizontal band contains the neutron scattering events. Neutron-induced nuclear recoils are marked in the oval and the ^{127}I excitation events are shown in the vertical band.

scattering. As shown in Fig. 4(b), the 57.6-keV ^{127}I excitation γ rays were observed (vertical band in the plot) in all neutron-induced NaI(Tl) scintillation energy spectra. As discussed in Sec. II, these γ s were used to provide an in-run energy calibration for this measurement; they also provided a way to monitor and correct the degradation of the NaI(Tl) light yield observed between the runs. It was estimated that this calibration introduced $\sim 1\%$ uncertainty in the energy scale due to the iodine recoils accompanying the 57.6-keV γ rays, and the time-dependent light yield correction further introduced a 1.5% uncertainty. The quenching factors to be reported in this paper are all normalized to the scintillation efficiency of NaI(Tl) under 57.6-keV γ excitations. Due to a possible nonlinearity of the NaI(Tl) scintillation output [18,27–29], the evaluated nuclear-recoil quenching-factor values may depend on the γ calibration point, and the results from different measurements need to be appropriately scaled for direct comparison.

With the neutron events selected using TOF cuts and the energy scale calibrated with ^{127}I excitation γ s, the nuclear recoil energy spectra were extracted for all 12 neutron scattering angles. The single-scattering Na recoil peaks could be resolved clearly in the relatively high-energy regions (>10 keV_{nr}), as illustrated in Fig. 5(a), which shows the energy spectrum of ~ 29 -keV_{nr} Na recoil events selected from Fig. 4. However, the energy spectra of relatively low-energy Na recoils (<10 keV_{nr}) were contaminated by noise from random coincidence backgrounds, as shown in Fig. 5(b). Fortunately, liquid scintillators have a scintillation pulse shape that depends on the particle type [28], a fact that we exploited to reject γ backgrounds. As shown in the insert figure of Fig. 5(b), a conservative cut on F_{50} , defined as the fraction of the pulse integral in the first 50 ns, was found to be sufficient in rejecting the low-energy background events. A similar F_{50} cut was applied to the NaI(Tl) detector signals to reject fast Cerenkov light in the NaI(Tl) crystal and fast noise signals in

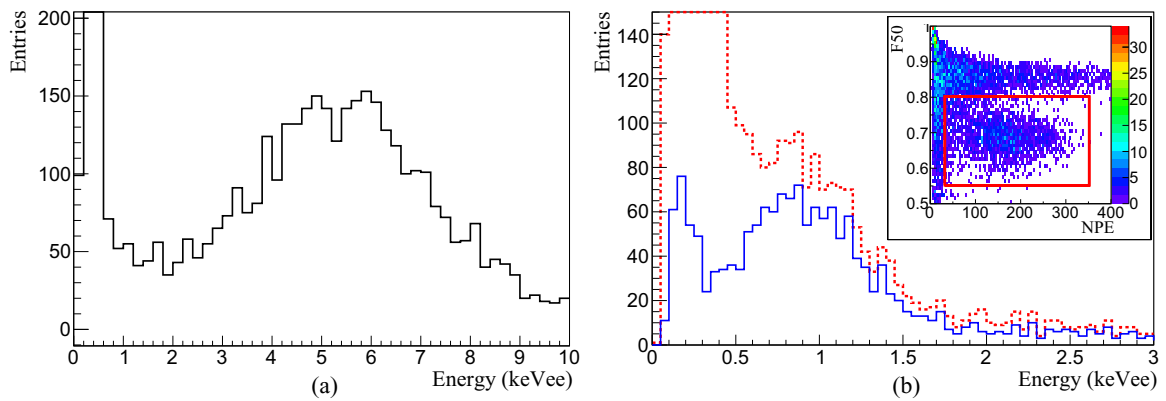


FIG. 5. (Color online) Examples of observed Na recoil energy spectra after the conservative TOF cuts. (a) Energy spectrum of ~ 29 keV_{nr} Na recoils (selected from Fig. 4). Only cuts on TOF1 and TOF2 were applied. (b) The energy spectrum of ~ 5.7 keV_{nr} Na recoils with (solid blue [gray]) and without (dotted red [gray]) PSD cuts on the liquid scintillator detector signals. The insert figure shows the PSD parameter F_{50} vs the pulse integral (in the unit of number of photoelectrons, or NPE) in the neutron detector. Note that PSD cuts were only necessary for data below the DAMA/LIBRA energy threshold of 2 keV_{ee}.

the electronics; typical NaI(Tl) scintillations have a lifetime of $\sim 200\text{--}300$ ns and the bias from this conservative F_{50} cut was negligible. We comment that the PSD cuts were only necessary for the analysis at the lowest energies (< 1.5 keV_{ee}), below the DAMA/LIBRA energy threshold of 2 keV_{ee}.

With the double-TOF cuts and the PSD cuts at low energies, the spectral peaks from single neutron-Na scattering were identified at all neutron scattering angles except for the 2.9-keV_{nr} recoils. We comment that all cuts used in this analysis were carefully chosen to be overly conservative so the analysis of neutron-induced events should not be biased. Thanks to the application of multiple event-selection criteria including double-TOF cuts and double-PSD cuts, the conservative cuts, when combined, were demonstrated to be sufficiently efficient in suppressing background events that were not due to neutron scattering coincidences.

B. Quenching factor evaluation

To evaluate the Na recoil quenching factors, the recorded nuclear recoil spectra need to be compared to the expected recoil spectra. In principal this is straightforward to calculate with the given kinematics. However, a number of effects could introduce uncertainties, including the proton energy loss in the LiF target, the energy dependence of the ${}^7\text{Li}(p,n){}^7\text{Be}$ reaction, the finite size of the NaI(Tl) detector, and the finite size and angular positions of the liquid scintillator neutron detectors. In this analysis, we employed Monte Carlo techniques to calculate the energy spectra of sodium and iodine nuclear recoils, taking into account these effects.

The GEANT4 package [30] (version 4.9.6.p3) was used to simulate the neutron interactions in the experimental setup. The beam-produced neutrons were generated using the ${}^7\text{Li}(p,n){}^7\text{Be}$ cross-sectional data measured by Burke *et al.* [26], with the proton energy loss in the LiF target appropriately simulated. Thanks to the small size of the NaI(Tl) crystal used in this measurement (a cube with 25-mm sides), single-scattering nuclear recoils dominated the simulated energy spectrum, as illustrated in the insert of Fig. 6, while multiple-scattering events contributed a small, featureless, near-flat background.

The Na-recoil quenching factors were extracted by fitting the observed nuclear recoil spectra to the Monte Carlo-simulated energy spectra convolved with a Gaussian spread. The maximum-likelihood algorithm was used to appropriately handle the fit in the low statistic data bins, and all fits returned reasonable χ^2 values. An example of the spectral fit is shown in Fig. 6, along with the simulated energy spectrum at the corresponding neutron detector configuration (the insert of Fig. 6). The systematic uncertainty in the fit process was evaluated by varying the fit range and comparing the fit results.

Based on the trigger-efficiency measurement described in Sec. II, we found that the Na-recoil events at low energies (< 10 keV_{nr}) were subject to loss of triggers due to the small pulse heights falling below the discriminator threshold. As shown in Fig. 7, the trigger efficiency drops dramatically around 20–25 digitizer counts, corresponding to ~ 1.5 photoelectron amplitude. It was estimated that approximately 50% of the NaI(Tl) scintillation events at 0.65 keV_{ee} were lost

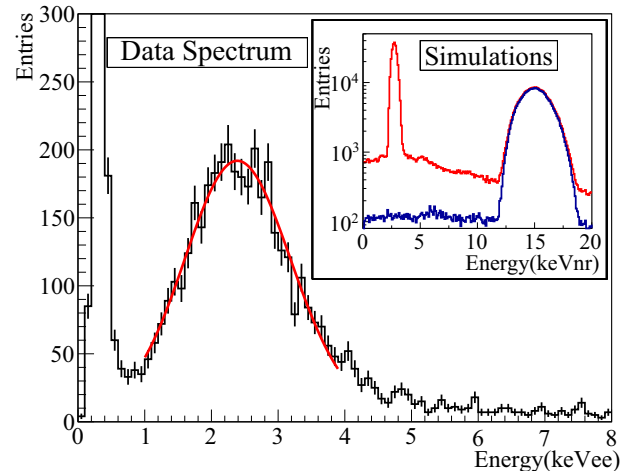


FIG. 6. (Color online) Spectral fit of ~ 15.0 keV_{nr} Na recoil events with the Monte Carlo-simulated spectrum with a Gaussian spread. The measured recoil spectrum is shown in black and the fit function is shown in red (gray). Insert: The Monte Carlo-simulated nuclear recoil energy spectra for the corresponding neutron scattering angle. The bottom blue (gray) spectrum shows the energy of single-scattering sodium recoil events; the top red (gray) spectrum also includes iodine recoils and multiple scattering events in NaI(Tl). The background rate of iodine recoils and multiple scatterings is ~ 20 times lower than that of single-scattering sodium recoils in the relevant energy region. The peak around 3 keV_{nr} in the insert figure corresponds to single-scattering iodine recoils, which fell below the trigger threshold in the measurement.

due to the threshold effect and the loss was more significant at lower energies. This threshold effect slightly biased the low-energy tail of the 9.1-keV_{nr} Na recoil data, as illustrated in Fig. 7, but impacted the 8.8-, 5.7-, and 2.9-keV_{nr} Na recoil data to a larger extent.

Therefore, we adopted a different analysis strategy at these energies. First, the measured trigger-efficiency curve was used to restore the loss of triggers for events with $> 10\%$ trigger efficiency. If the peak of the pulse-height spectrum could be resolved after this correction (5.7, 8.8, and 9.1 keV_{nr}), the peak position of the pulse-height spectrum was used to estimate the peak position of the pulse-integral (energy) spectrum. The pulse height and integral correlation was obtained by investigating the pulse-energy distribution at different pulse-height values. This method was confirmed to yield the correct peak energy in tests with higher energy recoils that did not suffer trigger loss. The quenching factors were then calculated by comparing the peak positions of the observed energy with that of the predicted energy. For the Na recoils of the lowest energy (2.9 keV_{nr}), the pulse-height spectrum could not be effectively restored, so an upper limit of the quenched energy (and the corresponding quenching factor) was extracted.

The Na-recoil quenching results are summarized in Table II. Due to an asymmetry in the energy spectra, the fitted quenching factor values differ slightly from the estimates based on the peak positions of the spectra, and this uncertainty was included in the peak-comparison analysis at low energies. In addition to the uncertainties from the spectral fits and peak-comparison analysis, the results also include the 1.5% uncertainty from the

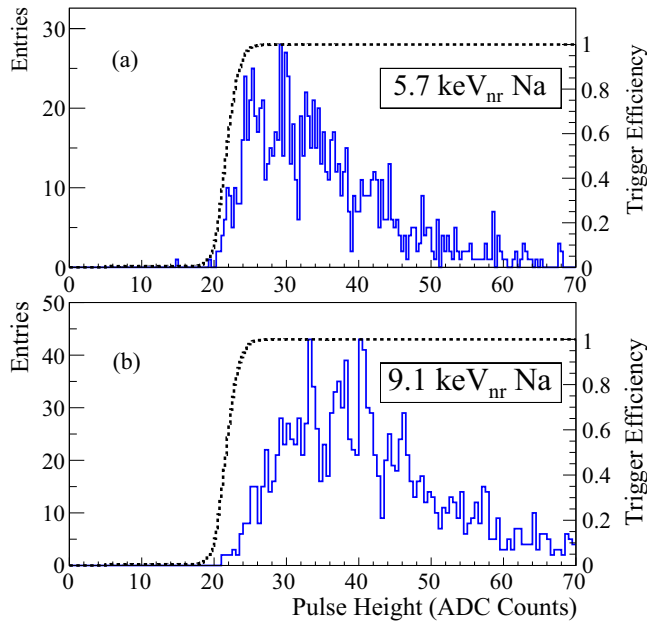


FIG. 7. (Color online) The pulse-height spectra of (a) 5.7-keV_{nr} Na recoil events and (b) 9.1-keV_{nr} Na recoil events. The measured pulse-height spectra are shown in blue (gray), and the independently measured trigger efficiency is shown by the black dotted line (efficiency scale is shown with the axis on the right).

γ -ray calibration, and 3–12% uncertainty from the detector position measurements, which varied with neutron scattering angles and distances between detectors.

Although this measurement was designed to study the quenching effect of low-energy sodium recoils, data acquired with large scattering angles could also contain iodine recoils of up to 10 keV_{nr} based on kinematic calculations and simulations. However, we did not observe significant evidence

TABLE II. Summary of the Na quenching factors measured in this work. The angles are calculated using the central positions of the detectors; the energies reported are the peak values and widths. Quenching factors were evaluated by spectral fits between observation and simulation above 10 keV_{nr} and by comparing the peak energy positions at lower energies after correcting for the trigger-efficiency loss, as described in the text.

Scattering angle (deg)	Sim. Na recoil energy (keV _{nr})	Observed recoil energy (keV _{ee})	Quenching factor
18.2	2.9 ± 0.7	<0.65	<0.22
24.9	5.7 ± 0.7	0.76 ± 0.4	0.133 ± 0.018
31.1	8.8 ± 1.2	1.13 ± 0.5	0.129 ± 0.014
32.2	9.1 ± 1.2	1.46 ± 0.5	0.162 ± 0.012
41.1	14.3 ± 2.4	2.21 ± 0.9	0.159 ± 0.019
41.3	15.0 ± 1.4	2.36 ± 0.8	0.160 ± 0.010
47.9	19.4 ± 1.6	3.21 ± 1.0	0.168 ± 0.009
54.4	24.9 ± 2.4	4.10 ± 1.5	0.171 ± 0.010
59.1	29.0 ± 1.9	5.36 ± 1.9	0.188 ± 0.008
64.6	33.3 ± 2.8	6.19 ± 2.1	0.191 ± 0.011
74.2	43.0 ± 2.2	8.53 ± 2.7	0.204 ± 0.008
84.0	51.8 ± 2.6	10.59 ± 4.5	0.207 ± 0.010

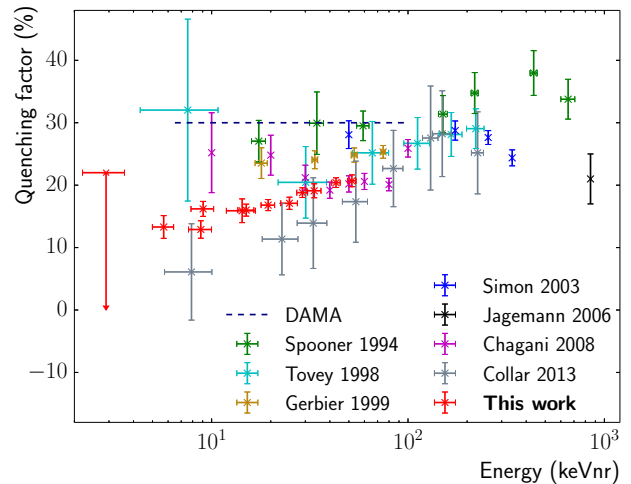


FIG. 8. (Color online) Na-recoil quenching factors measured in this work in comparison with previous results [12–18]. With much improved accuracy, this measurement approximately agrees with previous measurements at high energies and may reconcile the low-energy discrepancy. We comment that these measurements were calibrated to different γ -ray energies, and this direct comparison of quenching factors may include an uncertainty from the possible nonlinearity of NaI(Tl) scintillation [18,27–29].

for iodine recoils with the expected rate above 0.65 keV_{ee}, in which region we have over 50% trigger efficiencies. Therefore, we have set an upper limit of 0.065 ($>3\sigma$) for the iodine quenching factor at 10 keV_{nr}. We note that DAMA uses iodine quenching value of 0.09 [11], and Collar measured a much lower value of ~ 0.05 [18].

IV. RESULTS AND DISCUSSIONS

By using low-energy, pulsed neutrons and combining TOF and PSD methods, we obtained the most accurate measurement of Na-recoil quenching factors in NaI(Tl) to date. This result differs significantly from the measurements of DAMA, as illustrated in Fig. 8. At high energies, our measurement approximately agrees with previous reports, but the quenching factor values are found to drop significantly as the recoil energy decreases, similar to what was observed in the Collar measurement [18]. At low energies, our measurement falls between, and is statistically consistent with, the recent measurements by Collar and Chagani [17]. This energy-dependent quenching effect may be explained by the increasing ionization density along the Na recoil tracks at low energies, which has a large nuclear component but small electronic component; it is usually believed that the former leads to heat generation and the latter causes scintillation [17].

The Na-recoil quenching factor decreases from ~ 0.19 at 6 keV_{ee} to ~ 0.15 at 2 keV_{ee}, which means that the DAMA/LIBRA modulation signal (most notable at 2–6 keV_{ee}), if attributed to Na recoils, occurs in the energy window of 13–32 keV_{nr}¹ instead of the window 7–20 keV_{nr} as

¹Here we have assumed that our quenching factors calibrated to the 57.6-keV γ s can be directly applied to the DAMA/LIBRA data

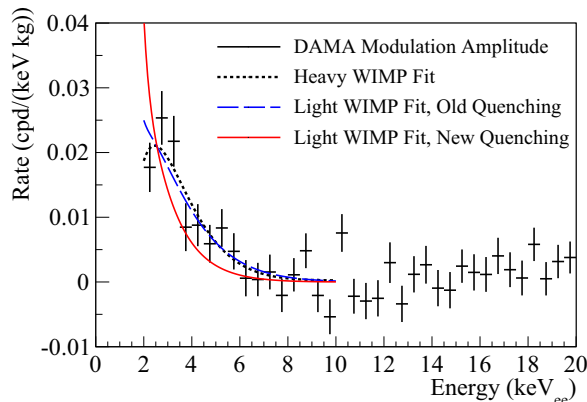


FIG. 9. (Color online) Spectral fits of the DAMA/LIBRA modulation amplitudes to the standard WIMP model (spin-independent only) with the new Na quenching factors in comparison with the fits with the old values. The heavy-WIMP fit does not change, but the low-mass-WIMP picture no longer fits the data well.

was previously thought. Due to the exponentially decreasing characteristic of a WIMP scattering spectrum, the WIMP explanation of the DAMA/LIBRA signal would require the WIMPs to have larger masses and/or larger interaction cross sections with nucleons than those assumed in previous DAMA/LIBRA interpretations.

Using a standard WIMP-halo model and considering only spin-independent WIMP-nucleon interactions [31,32], we evaluated how this new quenching measurement would impact the dark-matter interpretation of the DAMA/LIBRA signal. Figure 9 shows the WIMP fits of the DAMA/LIBRA modulation data [1] with the new quenching factor values, compared with those using old quenching values. Since this work focuses on the Na quenching effects below 52 keV_{nr} (10.6 keV_{ee}), we restricted the fits to below 10-keV_{ee} energy, above which the DAMA/LIBRA signal is consistent with zero modulation. As expected, the WIMP analysis yielded a global best fit with a heavy WIMP (~ 70 GeV/ c^2 mass) and a local best fit with a light WIMP (~ 10 GeV/ c^2 mass), as shown in Fig. 10.

With the new quenching factors, the light-WIMP fit (dominated by Na recoils) does not represent the data well, producing a χ^2_{\min} of 36 with 14 degrees of freedom ($P < 0.01$) in comparison with a χ^2_{\min} of 19 ($P \sim 0.2$) for the standard DAMA/LIBRA fit with the old quenching value. Therefore, the low-mass WIMP region is strongly disfavored, as illustrated by the diminishing χ^2 significance contours around 10 GeV/ c^2 in Fig. 10. Moreover, by shifting the light-WIMP contours to larger WIMP-mass and cross-sectional values, the tension between DAMA/LIBRA and other experiments increases in the standard WIMP picture.

The high-mass-WIMP fit does not change significantly because the recoil signal is dominated by WIMP-iodine scatterings and the effect due to sodium quenching is negligible.

because DAMA/LIBRA uses γ rays of a similar energy (59.5 keV) for regular calibrations.

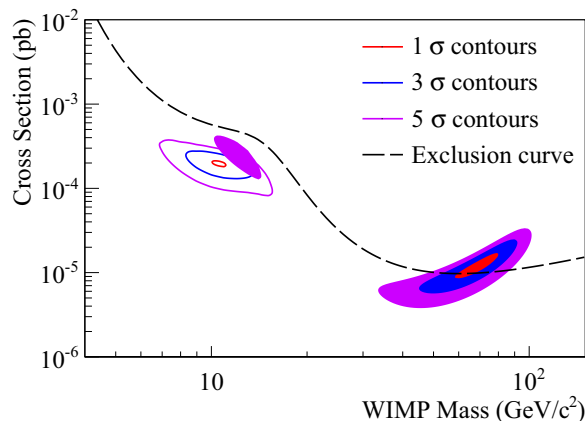


FIG. 10. (Color online) The DAMA/LIBRA 1σ , 3σ , and 5σ significance contours in the WIMP parameter space. The newly obtained results using the quenching factors measured in this work are shown in color-filled regions, while the old results with the DAMA/LIBRA quenching factors are shown in colored lines. The heavy-WIMP contours do not have significant change, but the 1σ and 3σ contours in the low-mass WIMP regions disappeared completely, disfavoring a light WIMP. The dashed line is the dark matter exclusion curve calculated using the overall DAMA/LIBRA observed event rate [33]. In the standard WIMP picture, WIMP parameters above this line would produce a nuclear recoil spectrum above the observed one in DAMA/LIBRA at ≥ 1 energy bin.

Nonetheless, the best fit values in the high-mass WIMP region lead to a WIMP-interaction rate in NaI(Tl) greater than that observed in DAMA/LIBRA around 2 keV_{ee} [33]. The dark matter exclusion curve [32] in Fig. 10 (dashed line) was calculated using the observed event rate in DAMA/LIBRA between 2 and 6 keV_{ee}, and in the standard WIMP picture, any WIMP parameters above this line would produce a nuclear recoil event rate higher than what was observed in DAMA/LIBRA at one or more energy bins. More important, the iodine-dominated heavy-WIMP region is in strong tension with results from the Korean Invisible Mass Search (KIMS) experiment using CsI(Tl) crystals [34], independent of WIMP models.

However, the standard WIMP models are known to have large uncertainties, and as discussed earlier, alternative dark matter theories may still be able to reconcile the experimental results [9,10]. A model-independent test of DAMA/LIBRA, therefore, is best made with a NaI(Tl) experiment with lower background than that of DAMA/LIBRA.

The lattice orientation of the NaI(Tl) crystal used in this experiment was not measured, so this measurement does not provide a sensitive test of the possible ion-channeling effect [35]. But, with the large number of Na-recoil angles measured and the fact that all quenching factors line up on a curve well below unit quenching (no quenching), we do not observe any evidence for the channeling effect. Similarly, although the setup for this experiment was optimized to measure sodium recoils, iodine recoils should have been observed if the quenching factor were at the value measured by DAMA-LIBRA (0.09). Based on the absence of the iodine recoil peaks, we set an upper limit ($>3\sigma$) of 0.065 on the iodine recoil quenching factor at 10 keV_{nr}.

V. CONCLUSION

We carried out an accurate measurement of the relative NaI(Tl) scintillation efficiency for Na recoils induced by a pulsed neutron beam, covering an energy window from 3 to 52 keV_{nr} (or 0.65–10.6 keV_{ee}, covering the whole DAMA/LIBRA modulation signal region of 2–6 keV_{ee}). By using double-TOF cuts and double-PSD cuts, we suppressed the coincidence background in the measurement with a high efficiency and obtained the most accurate results to date.

The Na recoil quenching factors are found to decrease significantly at low energies, which caused the DAMA/LIBRA modulation signal to be less compatible with a light-WIMP explanation in the standard WIMP picture. Although alternative models may still be able to reconcile the DAMA/LIBRA signal with other experimental results, a model-independent test using ultra-high-purity NaI(Tl) crystal detector is necessary to confirm or refute the DAMA/LIBRA dark matter claim.

ACKNOWLEDGMENTS

We acknowledge the hospitality of the University of Notre Dame in hosting this experiment and lending necessary electronics for us to fulfill the measurement. We thank Stephen Pordes from Fermilab for sharing neutron detectors and electronics with us. Radiation Monitoring Devices, Inc. (RMD) provided the NaI(Tl) crystal used in this experiment, and former Princeton technical specialist Allan Nelson built the detector enclosure parts; we thank them for their contributions. We are grateful to Ben Loer for developing the DAQMAN data-acquisition and analysis softwares that were adapted for this measurement. The SABRE NaI(Tl) program has been supported by NSF Grants No. PHY-0957083, No. PHY-1103987, and No. PHY-1242625. This measurement was supported by NSF Grants No. PHY-1242625 and No. PHY-1419765. Francis Froborg is supported by the Swiss National Science Foundation. Henning O. Back is supported by NSF Grant No. PHY-1242585. Thomas Alexander is partially supported by NSF Grant No. PHY-1211308.

-
- [1] R. Bernabei *et al.*, *Eur. Phys. J. C* **73**, 2648 (2013).
 - [2] A. L. Fitzpatrick, D. Hooper, and K. M. Zurek, *Phys. Rev. D* **81**, 115005 (2010).
 - [3] D. Smith and N. Weiner, *Phys. Rev. D* **64**, 043502 (2001).
 - [4] R. Bernabei *et al.*, *Eur. Phys. J. C* **23**, 61 (2002).
 - [5] J. Angle *et al.*, *Phys. Rev. Lett.* **107**, 051301 (2011).
 - [6] E. Aprile *et al.*, *Phys. Rev. Lett.* **109**, 181301 (2012).
 - [7] R. Agnese *et al.*, *Phys. Rev. Lett.* **111**, 251301 (2013).
 - [8] D. S. Akerib *et al.* (LUX Collaboration), *Phys. Rev. Lett.* **112**, 091303 (2014).
 - [9] J. L. Feng, J. Kumar, D. Marfatia, and D. Sanford, *Mod. Phys. Lett. B* **703**, 124 (2011).
 - [10] C. Arina, E. Del Nobile, and P. Panci, *Phys. Rev. Lett.* **114**, 011301 (2015).
 - [11] R. Bernabei *et al.*, *Mod. Phys. Lett. B* **389**, 757 (1996).
 - [12] N. Spooner, G. Davies, J. Davies, G. Pyle, T. Bucknell, G. Squier, J. Lewin, and P. Smith, *Mod. Phys. Lett. B* **321**, 156 (1994).
 - [13] D. Tovey, V. Kudryavtsev, M. Lehner, J. McMillan, C. Peak, J. Roberts, N. Spooner, and J. Lewin, *Mod. Phys. Lett. B* **433**, 150 (1998).
 - [14] G. Gerbier *et al.*, *Astropart. Phys.* **11**, 287 (1999).
 - [15] T. Jagemann, F. Feilitzsch, and J. Jochum, *Nucl. Instr. Methods Phys. Res. Sec. A* **564**, 549 (2006).
 - [16] E. Simon *et al.*, *Nucl. Instr. Methods Phys. Res. Sec. A* **507**, 643 (2003).
 - [17] H. Chagani *et al.*, *J. Instrum.* **3**, P06003 (2008).
 - [18] J. I. Collar, *Phys. Rev. C* **88**, 035806 (2013).
 - [19] K. Kim *et al.*, *Astropart. Phys.* **62**, 249 (2015).
 - [20] J. Cherwinka *et al.* (DMIce Collaboration), *Phys. Rev. D* **90**, 092005 (2014).
 - [21] J. Amare *et al.*, *J. Phys.: Conf. Ser.* **375**, 012026 (2012).
 - [22] G. Alner *et al.*, *Mod. Phys. Lett. B* **616**, 17 (2005).
 - [23] E. Shields, J. Xu, and F. Calaprice, *Phys. Proced.* **61**, 169 (2015).
 - [24] T. Alexander *et al.* (SCENE Collaboration), *Phys. Rev. D* **88**, 092006 (2013).
 - [25] H. Cao *et al.* (SCENE Collaboration), *Phys. Rev. D* **91**, 092007 (2015).
 - [26] C. A. Burke, M. T. Lunnion, and H. W. Lefevre, *Phys. Rev. C* **10**, 1299 (1974).
 - [27] B. D. Rooney and J. D. Valentine, *IEEE Trans. Nucl. Sci.* **44**, 509 (1997).
 - [28] G. F. Knoll, *Radiation Detection and Measurement*, 4th ed. (Wiley, New York, 2010).
 - [29] R. Bernabei *et al.*, *Nucl. Instr. Methods Phys. Res. Sec. A* **592**, 297 (2008).
 - [30] S. Agostinelli *et al.*, *Nucl. Instrum. Meth. A* **506**, 250 (2003).
 - [31] J. D. Lewin and P. F. Smith, *Astropart. Phys.* **6**, 87 (1996).
 - [32] C. Savage, G. Gelmini, P. Gondolo, and K. Freese, *J. Cosmol. Astropart. Phys.* **2009**, 010 (2009).
 - [33] R. Bernabei *et al.*, *Eur. Phys. J. C* **56**, 333 (2008).
 - [34] S. C. Kim *et al.*, *Phys. Rev. Lett.* **108**, 181301 (2012).
 - [35] R. Bernabei *et al.*, *Eur. Phys. J. C* **53**, 205 (2008).