



Search for a T -odd, P -even triple correlation in neutron decay

T. E. Chupp,¹ R. L. Cooper,¹ K. P. Coulter,¹ S. J. Freedman,² B. K. Fujikawa,² A. García,^{3,4} G. L. Jones,⁵ H. P. Mumm,⁶ J. S. Nico,⁶ A. K. Thompson,⁶ C. A. Trull,⁷ F. E. Wietfeldt,⁷ and J. F. Wilkerson^{3,8,9}

¹University of Michigan, Ann Arbor, Michigan 48104, USA

²Physics Department, University of California, Berkeley, and Lawrence Berkeley National Laboratory, Berkeley, California 94720, USA

³CENPA and Physics Department, University of Washington, Seattle, Washington 98195, USA

⁴Department of Physics, University of Notre Dame, Notre Dame, Indiana 46556, USA

⁵Physics Department, Hamilton College, Clinton, New York 13323, USA

⁶National Institute of Standards and Technology, Gaithersburg, Maryland 20899, USA

⁷Physics Department, Tulane University, New Orleans, Louisiana 70118, USA

⁸Department of Physics and Astronomy, University of North Carolina, Chapel Hill, North Carolina 27599, USA

⁹Oak Ridge National Laboratory, Oak Ridge, Tennessee 37831, USA

(Received 28 May 2012; published 14 September 2012)

Background: Time-reversal-invariance violation, or equivalently CP violation, may explain the observed cosmological baryon asymmetry as well as indicate physics beyond the Standard Model. In the decay of polarized neutrons, the triple correlation $D\langle\vec{J}_n\rangle/J_n\cdot(\vec{\beta}_e\times\hat{p}_v)$ is a parity-even, time-reversal-odd observable that is uniquely sensitive to the relative phase of the axial-vector amplitude with respect to the vector amplitude. The triple correlation is also sensitive to possible contributions from scalar and tensor amplitudes. Final-state effects contribute to D at the level of 10^{-5} and can be calculated with a precision of 1% or better.

Purpose: We have improved the sensitivity to T -odd, P -even interactions in nuclear β decay.

Methods: We measured proton-electron coincidences from decays of longitudinally polarized neutrons with a highly symmetric detector array designed to cancel the time-reversal-even, parity-odd Standard-Model contributions to polarized neutron decay. Over 300 million proton-electron coincidence events were used to extract D and study systematic effects in a blind analysis.

Results: We find $D = [-0.94 \pm 1.89(\text{stat}) \pm 0.97(\text{sys})] \times 10^{-4}$. This differs from the result of our recent paper [*Phys. Rev. Lett.* **107**, 102301 (2011)] due to refinement of corrections for background and backscattering.

Conclusions: This is the most sensitive measurement of D in nuclear β decay. Our result can be interpreted as a measurement of the phase of the ratio of the axial-vector and vector coupling constants ($C_A/C_V = |\lambda|e^{i\phi_{AV}}$) with $\phi_{AV} = 180.012^\circ \pm 0.028^\circ$ (68% confidence level). This result can also be used to constrain time-reversal-violating scalar and tensor interactions that arise in certain extensions to the Standard Model such as leptoquarks.

DOI: [10.1103/PhysRevC.86.035505](https://doi.org/10.1103/PhysRevC.86.035505)

PACS number(s): 24.80.+y, 11.30.Er, 12.15.Ji, 13.30.Ce

I. INTRODUCTION

The symmetries of physical processes under the transformations of charge conjugation (C), parity (P), and time reversal (T) have played a central role in the development of the Standard Model of elementary-particle interactions [1]. Time-reversal-symmetry violation (or T violation), which is equivalent to CP violation under the assumption of CPT symmetry, has been of particular interest because it is sensitive to many kinds of new physics. The CP -violating parameters of the Standard Model are the Cabibbo-Kobayashi-Maskawa (CKM) phase, which enters in the mixing of three generations of quarks, and the parameter θ_{QCD} . The effect of the CKM phase is strongly suppressed in the permanent electric dipole moments (EDMs) of the neutron [2] and heavy atoms [3,4], and recent EDM results combine to set upper limits on θ_{QCD} . All laboratory measurements to date are consistent with a single source of CP violation, i.e., the phase in the CKM matrix. An exception may be the 3.2σ deviation observed recently as an asymmetry in the production of pairs of like-sign muons reported by the D0 Collaboration [5].

In spite of this success, laboratory and astrophysical observations, which include neutrinos with nonzero masses,

the abundance of nonbaryonic dark matter, and the baryon asymmetry of the universe, provide strong evidence that the Standard Model is incomplete. Generation of the baryon asymmetry requires CP violation that cannot be accounted for by Standard-Model physics [6,7]. This provides strong motivation to search for new sources of CP violation. Such CP -violating phases would also, in general, affect T -odd observables in neutron decay, in particular, the T -odd, P -even triple correlation in polarized neutron decay.

We have measured the triple correlation in the decay of polarized neutrons at the NIST Center for Neutron Research (NCNR) using the emiT apparatus [8–10]. The D coefficient is uniquely sensitive to the relative phase of vector and axial-vector β -decay amplitudes and is also sensitive to scalar and tensor currents. Our result, first reported in Ref. [11], sets a new limit on this phase as well as on certain combinations of scalar and tensor currents.

This paper presents the details of the experiment and analysis and examines the implications of this result. The paper is organized as follows: The context of the measurement is presented in the remainder of this introduction. In Sec. II the measurement principle based on the symmetries of the apparatus is presented. The Monte Carlo simulations used

to understand the apparatus and important details of the performance of the apparatus are provided in Secs. III and IV. In Sec. V we present the details of the data set; and Sec. VI is a detailed discussion of all systematic effects and corrections applied to the data. In Sec. VII we describe the principle of the blind analysis and present the final result; and in section VIII we summarize the implications of our result and prospects for improved measurements.

A. Polarized neutron decay

If recoil-order corrections are neglected, the general form of the Hamiltonian for β decay (e.g., $n \rightarrow pe\bar{\nu}$) can be written [12] as

$$\begin{aligned} H_{\text{int}} = & (\bar{\psi}_p \gamma_\mu \psi_n)(C_V \bar{\psi}_e \gamma_\mu \psi_\nu + C'_V \bar{\psi}_e \gamma_\mu \gamma_5 \psi_\nu) \\ & - (\bar{\psi}_p \gamma_\mu \gamma_5 \psi_n)(C_A \bar{\psi}_e \gamma_\mu \psi_\nu + C'_A \bar{\psi}_e \gamma_\mu \psi_\nu) \\ & + (\bar{\psi}_p \psi_n)(C_S \bar{\psi}_e \psi_\nu + C'_S \bar{\psi}_e \gamma_5 \psi_\nu) \\ & + \frac{1}{2}(\bar{\psi}_p \sigma_{\lambda\mu} \psi_n)(C_T \bar{\psi}_e \sigma_{\lambda\mu} \psi_\nu + C'_T \bar{\psi}_e \sigma_{\lambda\mu} \gamma_5 \psi_\nu), \\ & + \text{H.c.}, \end{aligned} \quad (1)$$

where the subscripts V , A , S , and T , respectively, refer to vector, axial-vector, scalar, and tensor contributions, and we have left out the pseudoscalar amplitude, which vanishes in the limit of nonrelativistic nucleons. By allowing the possibility of T violation, the C 's are complex numbers, and there are 19 free parameters plus a single arbitrary overall phase. The Standard Model is written with only left-handed V and A interactions with $C_V = C'_V$ and $C_A = C'_A$. Thus the number of free parameters is reduced to three: $|C_V|$, $|C_A|$, and the relative phase of $\lambda = C_A/C_V$. The value of $|C_V| = G_F |V_{ud}|$ follows from the conserved-vector-current (CVC) hypothesis with G_F determined from the muon lifetime and $|V_{ud}|$ most precisely determined from superallowed β decays [13]. The parameter $|\lambda|$ is determined from other measurements including the β -asymmetry A term [14,15].

The Hamiltonian of Eq. (1) leads to the following differential decay rate for polarized neutrons and no final-state electron polarization [12]:

$$\begin{aligned} \frac{dW}{dE_e d\Omega_e d\Omega_\nu} = & S(E_e) \left[1 + a \frac{\mathbf{p}_e \cdot \mathbf{p}_\nu}{E_e E_\nu} + b \frac{m_e}{E_e} \right. \\ & \left. + \mathbf{P} \cdot \left(A \frac{\mathbf{p}_e}{E_e} + B \frac{\mathbf{p}_\nu}{E_\nu} + D \frac{\mathbf{p}_e \times \mathbf{p}_\nu}{E_e E_\nu} \right) \right], \end{aligned} \quad (2)$$

where $S(E_e) = F(E_e) p_e E_e (E_e^{\text{max}} - E_e)^2$ is the phase-space factor with $F(E_e)$ the Fermi function for $Z = 1$, \mathbf{p}_e and \mathbf{p}_ν and E_e and E_ν are the momentum and energy, respectively, of the electron and antineutrino and the neutron polarization $\mathbf{P} = \langle \frac{\mathbf{J}_n}{J_n} \rangle$ is the ensemble average of the neutron spin. The triple correlation $D \langle \mathbf{J}_n \rangle \cdot (\mathbf{p}_e \times \mathbf{p}_\nu)$ is P -even but odd under motion reversal. Time-reversal is the combination of motion-reversal and initial-state-final-state reversal. Thus contributions to D can originate from T -violating interactions and from final-state effects, i.e., $D = D_T + D_{\text{FSI}}$ [16], where

$$D_{\text{FSI}} \approx 1.1 \times 10^{-5} \frac{p_e}{p_e^{\text{max}}} + 0.3 \times 10^{-5} \frac{p_e^{\text{max}}}{p_e}. \quad (3)$$

For the neutron $D_{\text{FSI}} \approx 1.2 \times 10^{-5}$ and can be calculated to 1% or better [17–19].

In the neutron rest frame, $\mathbf{p}_\nu = -(\mathbf{p}_p + \mathbf{p}_e)$ (since, for cold neutrons, the neutron velocity in the laboratory frame has a negligible effect), and the triple correlation can be written as

$$D \langle \mathbf{J}_n \rangle \cdot (\mathbf{p}_e \times \mathbf{p}_\nu) = D \langle \mathbf{J}_n \rangle \cdot (\mathbf{p}_p \times \mathbf{p}_e). \quad (4)$$

We therefore extract D by measuring proton-electron angular correlations in polarized-neutron decay.

B. The physics of D_T

In the context of Eq. (1), D_T depends on the coefficients C_V , C_A , C_S , and C_T and can be written as [17]

$$\begin{aligned} \xi D_T = & -\frac{2}{\sqrt{3}} |M_F| |M_{GT}| \text{Im}[C_V C_A^* + C'_V C_A'^*] \\ & + \frac{2}{\sqrt{3}} |M_F| |M_{GT}| \text{Im}[C_S C_T^* + C'_S C_T'^*] \\ & - \frac{2}{\sqrt{3}} |M_F| |M_{GT}| \frac{\alpha m_e}{p_e} \text{Re}[C_S C_A^* + C'_S C_A'^*] \\ & - C_V C_T^* - C'_V C_T'^*, \end{aligned} \quad (5)$$

where $|M_F|$ and $|M_{GT}|$ are matrix elements for Fermi and Gamow-Teller transitions (for neutrons, $|M_{GT}|^2/|M_F|^2 = 3$), and

$$\begin{aligned} \xi = & |M_F|^2 (|C_V|^2 + |C'_V|^2 + |C_S|^2 + |C'_S|^2) \\ & + |M_{GT}|^2 (|C_A|^2 + |C'_A|^2 + |C_T|^2 + |C'_T|^2). \end{aligned} \quad (6)$$

We assume terms quadratic in C_S and C_T can be neglected in ξ , and we take $C_V = C'_V$ and $C_A = C'_A$ (i.e., left-handed V - A interactions) so that

$$\begin{aligned} D_T \approx & \frac{1}{1 + 3|\lambda|^2} \left\{ -2 \frac{\text{Im}(C_V C_A^*)}{|C_V|^2} + \frac{\text{Im}(C_S C_T^* + C'_S C_T'^*)}{|C_V|^2} \right. \\ & \left. + \frac{\alpha m}{p_e} \text{Re} \left(\lambda^* \frac{C_T^* + C_T'^*}{C_A^*} - \lambda^* \frac{C_S + C'_S}{C_V} \right) \right\}, \end{aligned} \quad (7)$$

where $\lambda = |\lambda| e^{i\phi_{AV}} = C_A/C_V$. The first term is sensitive to ϕ_{AV} , the phase of λ , and can be approximately written as $D_T^{\text{VA}} \approx 0.435 \sin \phi_{AV}$ for $|\lambda| = 1.2694$ [20]. The remaining terms show sensitivity to combinations of scalar and tensor amplitudes that signal beyond-Standard-Model physics.

Standard-Model CP violation makes very small contributions to D_T . The CKM phase enters light-quark processes at loop level, yielding $D_T \approx 10^{-12}$ [21,22]. The parameter θ_{QCD} is tightly constrained by the EDMs of the neutron and ^{199}Hg and also makes a very small contribution to D_T , i.e., less than 10^{-14} [21,22]. Beyond-Standard-Model physics, in particular left-right symmetric models, exotic fermions, and leptoquarks, gives rise to couplings that contribute to D_T at a level comparable to the sensitivity of the current experiment; however, it has been argued that limits on T -odd, P -odd observables, in particular EDMs, can be used to place limits on T -odd, P -even interactions and thus on D_T by calculating the T -odd, P -even effects of radiative loops on T -odd, P -odd

TABLE I. Expected contributions to D_T for neutron decay from parameters of the Standard Model and beyond-Standard-Model physics based on measurements in other systems. The broad range of limits arises in the cases of significant model dependence.

Source	Limit on D_T
CKM phase	10^{-12}
θ_{QCD}	2×10^{-15}
Left-right symmetry	10^{-7} – 10^{-5}
Non-SM fermions	10^{-7} – 10^{-5}
Charged Higgs SUSY	10^{-7} – 10^{-6}
Leptoquark	10^{-5} – 10^{-4}

interactions [23–27]. For the neutron EDM, this limit is more stringent than the sensitivity of the experiment described here by as much as an order of magnitude. This argument is based on the assumption of complete absence of cancellations between different contributions to the neutron EDM, which cannot be *a priori* excluded [27]. Table I summarizes the contributions to D_T from the Standard Model and extensions.

C. Recent results

The two most recent measurements of D in neutron decay are from emiT-I and the TRINE experiment at the Institute Laue Langevin, Grenoble (ILL). For emiT-I, $D = [-6 \pm 12(\text{stat}) \pm 5(\text{sys})] \times 10^{-4}$ [9], and the TRINE result was $D = [-2.8 \pm 6.4(\text{stat}) \pm 3.0(\text{sys})] \times 10^{-4}$ [28]. The Particle Data Group average for the neutron [20] also includes results from Refs. [29–31]. A measurement in ^{19}Ne , where the final-state interactions are more than an order of magnitude larger than for the neutron, resulted in $D_{^{19}\text{Ne}} = [0.7 \pm 6] \times 10^{-4}$ [32,33]. We also note that the R coefficient of the T -odd, P -odd correlation $\mathbf{J}_n \cdot (\mathbf{p}_e \times \boldsymbol{\sigma}_e)$, which is linearly sensitive to S and T amplitudes, has recently been measured for the neutron [34] and for ^8Li [35].

II. THE emiT-II EXPERIMENT

The emiT experiment was designed to measure proton-electron coincidences in the decay of neutrons polarized along the axis of an array of detectors. The symmetry of the detector array allowed us to discriminate the triple correlation from the T -even, P -odd A - and B -coefficient correlations. The layout of the experiment is shown in Fig. 1. The cold neutron beam was transported by the neutron guide NG6 to the experiment. The neutrons were polarized and passed through a spin flipper. Downstream of the spin flipper, neutron spins were adiabatically transported through rotation of the magnetic field to the longitudinal direction, along the axis of the detector array.

The detector array, illustrated in Fig. 2, consists of four electron detectors alternating with four proton-detector planes arranged in an octagonal geometry concentric with the neutron beam. Each of the four proton-detector planes consists of 16 separate cells arranged in two rows of eight cells. The protons are detected by negatively biased surface barrier detectors (SBDs) that are incorporated into focusing cells as illustrated in Fig. 3. Within the fiducial volume of the detector array, neutrons are polarized parallel or antiparallel to the magnetic field depending on the state of the spin flipper. The magnetic field in the detector region is approximately $560 \mu\text{T}$ in magnitude and is nominally aligned parallel to the neutron beam and detector axis.

A. Electron-proton coincidence events

The data set consists of 512 sets of coincidence events from the combination of the 64 proton cells and the four electron detectors for the two spin-flipper states. The total number of counts for a given run time is labeled as $N_{\pm}^{p_i e_j}$, where the \pm indicates the spin-flipper state (neutrons nominally parallel or opposite to the magnetic field \mathbf{B}), p_i labels the proton cell, and e_j labels the electron detector. The neutron-spin dependence of the count rates depends on the correlations labeled by A , B , and D and is given by the difference of rates for the two spin-flipper

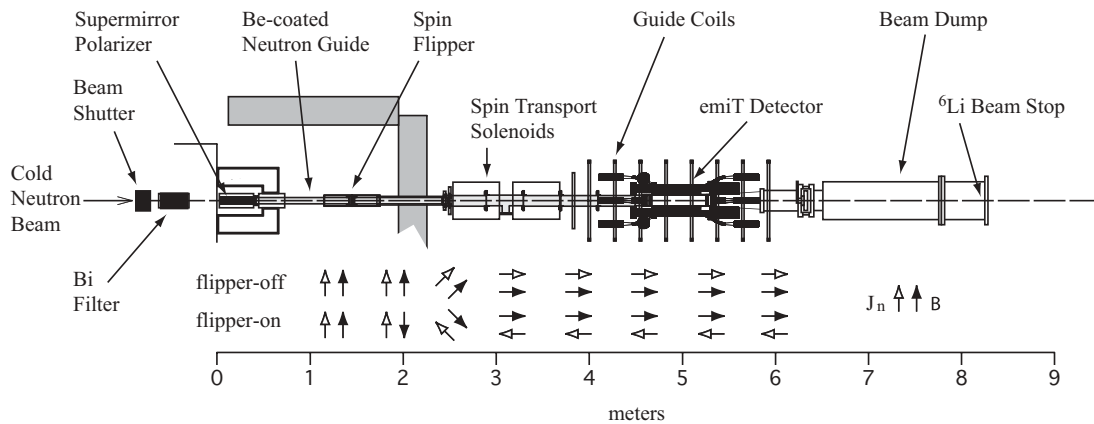


FIG. 1. Layout of the emiT-II experiment beamline. The neutron beam is nominally unpolarized upstream of the polarizer and is vertically polarized downstream. Polarized neutrons are guided within beryllium-coated glass tubes to the detector. As shown, the spin flipper reverses the direction of the vertical magnetic field \mathbf{B} over a short distance so that the neutron spin \mathbf{J}_n , which remains polarized vertically upward, reverses with respect to the magnetic field. Downstream of the spin flipper, solenoids rotate the magnetic field into the horizontal direction, parallel to the neutron beam.

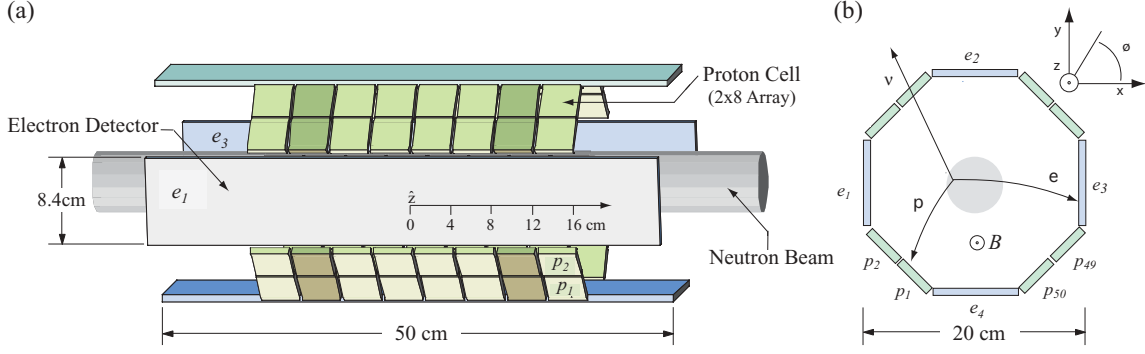


FIG. 2. (Color online) The emiT-detector array. (a) Side view showing proton-detector planes, with 16 proton cells (2×8) in each plane, and 50-cm-long electron detectors. (b) End view showing the four proton-detector planes and four electron detectors. The magnetic field, directed parallel to the average neutron velocity, causes the proton and electron trajectories to be curved as indicated by the greatly exaggerated paths shown. In this paper, we refer to the magnitude of the relative angles between a proton detector and electron detector; e.g., for proton detector p_1 , these are 35° , 55° , 125° , and 145° , for e_4 , e_1 , e_3 , and e_2 respectively. For reference, distances are measured from the center of the detector array.

states, while the average of rates includes the spin-independent β -neutrino correlation (a term).

In order to isolate the neutron-spin-dependent terms, we define the asymmetry

$$w^{p_i e_j} = \frac{N_+^{p_i e_j} - N_-^{p_i e_j}}{N_+^{p_i e_j} + N_-^{p_i e_j}}. \quad (8)$$

In principle, the $N_{\pm}^{p_i e_j}$ follow from integrating Eq. (2) over the neutron beam, the detectors' acceptances, electron momentum, and neutrino angles for a fixed time so that

$$w^{p_i e_j} \approx \frac{A \langle \beta_e \mathbf{P} \cdot \hat{\mathbf{p}}_e \rangle + B \langle \mathbf{P} \cdot \hat{\mathbf{p}}_v \rangle + D \langle \beta_e \left(\frac{p_p}{p_v} \right) \mathbf{P} \cdot (\hat{\mathbf{p}}_p \times \hat{\mathbf{p}}_e) \rangle}{(1) + a \langle \beta_e \hat{\mathbf{p}}_e \cdot \hat{\mathbf{p}}_v \rangle}, \quad (9)$$

where $\beta_e = v_e/c$ is the electron velocity, \mathbf{P} is the neutron polarization at a given position, and the angle brackets ($\langle \rangle$) indicate that each term is averaged over energies, the neutron-beam distribution, and solid angles for proton detector p_i and electron detector e_j . As shown below, the D -coefficient term can be isolated by forming a specific combination of $w^{p_i e_j}$ that cancels the parity-violating A and B correlations.

B. The ideal experiment

In order to explain the analysis technique, we begin by considering an ideal experiment with uniform longitudinal neutron polarization ($\mathbf{P} = P\hat{\mathbf{z}}$), uniform neutron-beam density, and uniform efficiencies for all proton and electron detectors. Consider a proton detected in p_1 in coincidence with an electron detected in either detector e_2 or e_3 as shown in Fig. 2. (Coincidence rates of detectors with smaller relative angle, e.g., p_1 with e_1 and e_4 , were about 15–25 times lower and were not used to extract D in this analysis.) For longitudinal neutron polarization, the asymmetry from Eq. (9) can be written as

$$w^{p_i e_j} \approx P \kappa^{p_i e_j} \left[D \left\langle \beta_e \left(\frac{p_p}{p_v} \right) \hat{\mathbf{z}} \cdot (\hat{\mathbf{p}}_p \times \hat{\mathbf{p}}_e) \right\rangle + A \langle \beta_e \cos \theta_e \rangle + B \langle \cos \theta_v \rangle \right], \quad (10)$$

where θ_e and θ_v are the polar angles of the electron and antineutrino with respect to the neutron polarization \mathbf{P} , and

$$\kappa^{p_i e_j} = \frac{1}{\langle 1 \rangle + a \langle \beta_e \hat{\mathbf{p}}_e \cdot \hat{\mathbf{p}}_v \rangle}.$$

It is useful to define an instrumental constant that characterizes the sensitivity of $w^{p_i e_j}$ to the triple correlation, i.e., $K_D^{p_i e_j} = \partial w^{p_i e_j} / \partial D$, or

$$K_D^{p_i e_j} \approx \kappa^{p_i e_j} \left\langle \beta_e \left(\frac{p_p}{p_v} \right) \hat{\mathbf{z}} \cdot (\hat{\mathbf{p}}_p \times \hat{\mathbf{p}}_e) \right\rangle. \quad (11)$$

The $K_D^{p_i e_j}$ used in the analysis were determined by Monte Carlo studies and are discussed in Sec. VI G.

To isolate the triple correlation, we note that the longitudinal component of the cross product, $\hat{\mathbf{z}} \cdot (\hat{\mathbf{p}}_p \times \hat{\mathbf{p}}_e)$, has opposite sign for $p_1 e_3$ and $p_1 e_2$ coincidences: for $p_1 e_3$, it is positive, and for $p_1 e_2$, it is negative. Thus we form a difference of spin-flip asymmetries for the two electron detectors. For example, for p_1 we have $v^{p_1} = \frac{1}{2}(w^{p_1 e_3} - w^{p_1 e_2})$. From Eq. (10), the v^{p_i} for longitudinal polarization are

$$v^{p_1} \approx \bar{K}_D P D + P \frac{A}{2} [\kappa^{p_1 e_3} \langle \beta_e \cos \theta_e \rangle^{p_1 e_3} - \kappa^{p_1 e_2} \langle \beta_e \cos \theta_e \rangle^{p_1 e_2}] + P \frac{B}{2} [\kappa^{p_1 e_3} \langle \cos \theta_v \rangle^{p_1 e_3} - \kappa^{p_1 e_2} \langle \cos \theta_v \rangle^{p_1 e_2}], \quad (12)$$

where $\bar{K}_D = \frac{1}{2}(K_D^{p_1 e_3} - K_D^{p_1 e_2})$. Due to the P -odd, T -even correlations combined with the strong anticorrelation of proton and electron momenta, the asymmetries depend strongly on the axial position of the proton cell. (Data are shown in Figs. 12 and 13.) For example, if we assume $D = 0$, the v^{p_j} and $w^{p_i e_j}$ are equal but opposite for the upstream proton cell and an axially symmetric downstream proton cell, e.g., $v^{p_1} = -v^{p_{15}}$. Also note that in the absence of the 560- μ T magnetic field, the v^{p_i} are opposite for the adjacent proton cell, e.g., $v^{p_1} = -v^{p_2}$. Thus, for an ideal experiment with uniform longitudinal polarization and beam, the average of v^{p_i} from an upstream-downstream pair of proton cells (e.g., v^{p_1} and $v^{p_{15}}$) or adjacent cells (e.g., v^{p_1} and v^{p_2}) will cancel

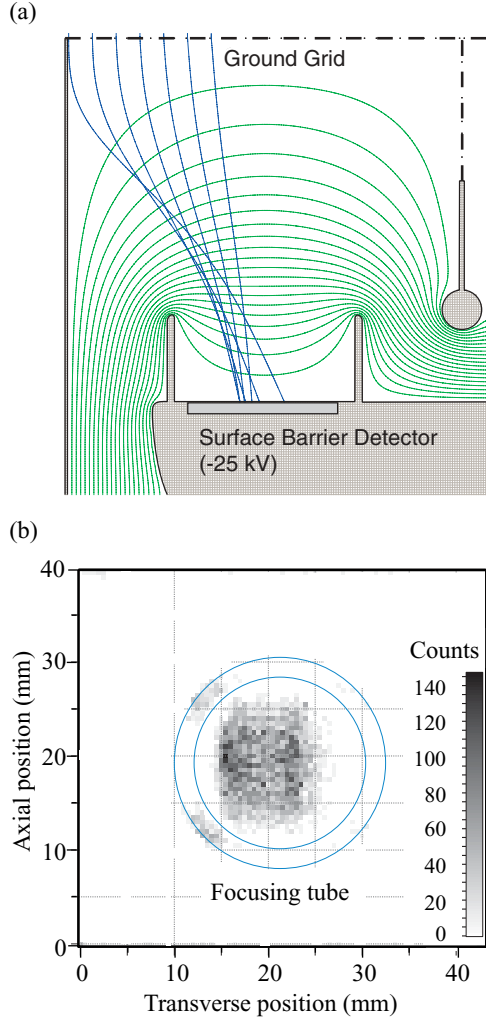


FIG. 3. (Color online) (a) Proton-cell layout with calculated equipotential surfaces (green) and proton paths (blue) for 25 kV. (b) Monte Carlo-generated hit pattern for 5000 incident proton trajectories. The neutron beam is centered on the right-hand side of the figure.

the β -asymmetry and neutrino-asymmetry terms, leaving the D -coefficient term; however, the magnetic field affects the average of β_e differently for odd (e.g., p_1) and even (e.g., p_2) proton detectors. Thus we combine data for all four proton cells in order to isolate D .

1. Transverse neutron polarization

A small misalignment of the magnetic field with respect to the detector axis gives rise to transverse-polarization effects. In the limit of a small beam diameter and a small angular acceptance of the proton cell, the average proton momentum $\langle \mathbf{p}_p \rangle$ is the same for the two electron detectors (e.g., e_3 and e_2). For transverse polarization, indicated by the subscript T , we can write

$$v_T^{p_i} \approx v_T \sin(\phi_P - \phi^{p_i}), \quad (13)$$

where ϕ_P is the azimuthal angle of the polarization, ϕ^{p_i} is the effective azimuthal position of the proton cell as

indicated in Fig. 2, and $v_T \approx 0.46P \sin \theta_P$. The factor 0.46 is consistent with both Monte Carlo simulations and the transverse-polarization calibration runs discussed in Sec. VI F. Thus, for uniform neutron density and polarization, the sinusoidal dependence of $v_T^{p_i}$ on the azimuthal position of the proton-cell averages to zero when data from all four proton-detector planes are combined.

2. Extracting D

In order to cancel the effects of transverse polarization, the β and neutrino asymmetries, and the 560- μ T magnetic field, we must combine the v^{p_i} from at least 16 proton cells symmetrically located with respect to the center of the detector: two adjacent cells upstream of the detector center paired with two adjacent downstream cells from all four proton planes. Each set of 16 proton cells has the same $|z^{p_i}|$, i.e., $z^{p_i} = \pm 2, \pm 6, \pm 10, \text{ and } \pm 14$ cm. For example, the shaded proton cells indicated in Fig. 2 correspond to $z^{p_i} = \pm 10$ cm. For each $|z^{p_i}|$ we define a measured quantity \tilde{D} given by

$$\tilde{D} = \frac{1}{\bar{K}_D P} \sum_{|z^{p_i}|=\text{const}} v^{p_i}, \quad (14)$$

where $\bar{K}_D = 0.378 \pm 0.019$ as discussed in Sec. VI G. Due to the symmetry with respect to the detector center, each of the four possible \tilde{D} is an independent measurement of the same nominal quantity. This provides cross-checks and maximum statistical power. The \tilde{D} are subject to a variety of systematic effects that are estimated and applied as corrections in order to determine D . Corrections to \tilde{D} are discussed in Sec. VI.

III. MONTE CARLO SIMULATIONS

Monte Carlo simulations were used both in the design of the experiment and to estimate several of the systematic effects that impact the analysis. Separate simulations addressed the detector responses, proton focusing cells, and neutron-spin transport.

To track electrons, we used PENELOPE [36], which has been experimentally validated for a variety of kinematics of relevance to neutron decay [37]. To track protons we used a custom code embedded into PENELOPE. The Monte Carlo code used the measured beam distributions and took into account the 560- μ T axial magnetic field and details of the detector as described below.

Simulations used a detector model that included all surfaces visible to decaying particles including cryopanel and the proton-cell ground planes. For simplicity in backscattering studies, the grids on the proton detectors were replaced in the model with solid foil, and the simulations were verified for this substitution. The PENELOPE-based Monte Carlo code was used to analyze the effects of the electron response function and backscattering of protons and electrons. Section VI C provides details on how the backscattering events were studied. Section VI D gives details on the issues associated with the scintillator response.

A separate simulation using SIMION [38,54] was developed to track proton trajectories within the proton cells, and proton-cell efficiencies were determined for events generated by the

PENELOPE-based Monte Carlo simulation. The detailed proton-cell geometry was used to determine the electric fields and to analyze focusing efficiency as a function of incident proton momentum and position on the focusing-cell grid.

The energy-loss code SRIM [39] was used to provide proton-energy-loss backscattering probabilities. In addition, SBD models were used with SRIM calculations to evaluate the response, energy loss, and buildup of condensation on the SBDs.

The propagation of neutron-spin components from the polarizer and through the spin flipper and guide field were modeled by numerical integration of the Bloch equations using Monte Carlo techniques to generate neutron trajectories [40].

IV. APPARATUS PERFORMANCE

Detailed descriptions of the experiment components, including the beamline, polarization, spin flipper, spin-transport magnetic fields, and the detector array for the emiT-II run are described in detail in Refs. [9,10,40–42]. Here we summarize specific features that impact the analysis and systematic effects described in this paper.

A. Beam

Lead-backed lithium-glass collimators defined the beam and reduced backgrounds at the detector. The beam dump was located 2 m downstream of the detector and was also composed of lithium glass. A 3-mm hole in the glass allowed neutrons to pass through and the beam rate to be monitored continuously throughout the run. The mean neutron capture flux (the average of the neutron flux weighted by the inverse neutron velocity, $1/v_n$) was monitored with a fission monitor [43].

Estimates of the distribution of neutron density were used in the Monte Carlo modeling of the experimental and systematic effects. The cold neutron beam from NG6 was mapped by activating a 25- μm -thick, natural-abundance dysprosium foil. Neutron absorption on ^{164}Dy (28.2% abundance) follows the $1/v_n$ law, and the foil is thin enough to provide a sufficiently accurate measure of the neutron density. The activated foil was subsequently laid on a β -sensitive film, and the exposure was measured with an image reader with pixel resolution of $200 \times 200 \mu\text{m}$ [44]. Maps 18 cm upstream and 18 cm downstream of the center of the detector array are shown in Fig. 4. The dominant features of the maps are the expansion of the beam (by about 5 mm in radius over the 80-cm length of the detector array) and the horizontal shift of the beam, which is due to the properties of the polarizer. The beam expansion affects the longitudinal cancelations of the v^{p_i} from upstream-downstream combinations and leads to a systematic effect discussed in Secs. VIE and VIF.

B. Polarization and spin flipper

The neutron polarizer is a supermirror bender (PSM) [45]. Neutrons are polarized parallel to the vertical magnetic field of the PSM. The spin flipper consists of two closely spaced current sheets with horizontal currents. The magnetic field from the upstream current sheet was parallel to the PSM field, and the current in the downstream current sheet could be set parallel or antiparallel to the upstream current sheet. For

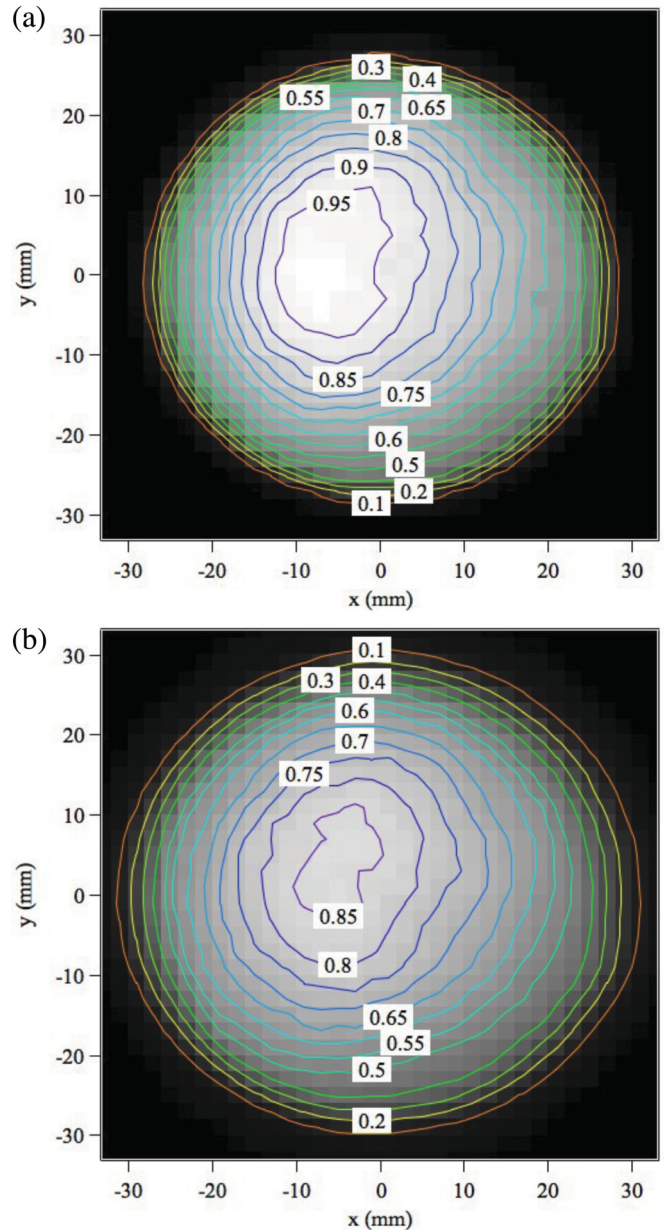


FIG. 4. (Color online) Neutron-beam distributions for positions 18 cm upstream of the center of the detector (a) and 18 cm downstream of the detector center (b). Contours show the film exposure relative to the maximum at the center of the upstream map.

parallel currents, the vertical magnetic field reverses direction over a distance of about 1 mm, corresponding to a time of about $2 \mu\text{s}$ in the rest frame of a cold neutron. This time is short compared to the inverse Larmor frequency, and the neutron spin does not follow the magnetic field adiabatically. The result is that the neutron spin remains oriented in the original upward direction while the magnetic field reverses from upward to downward, thus reversing the projection of the spin with respect to the magnetic-field direction, as indicated in Fig. 1. Small transverse neutron-spin components which do arise precess around the magnetic guide field as the neutrons move through the apparatus. Thus the polarization direction of a decaying neutron depends on the vertex of the decay

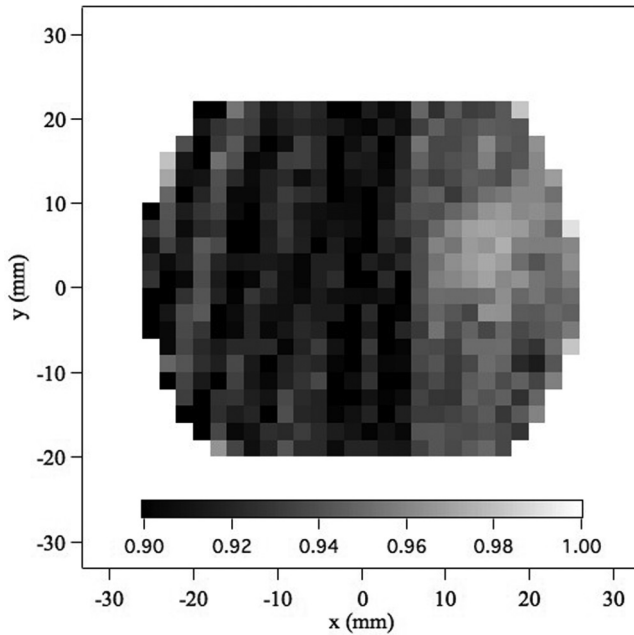


FIG. 5. Neutron polarization map showing the position dependence of the estimated lower limit on neutron polarization assuming $P = A_p$. The top and bottom are cut off by the collimating mask that defined the aperture of the analyzer. The increase of polarization from left to right is due to the PSM bending properties.

as well as the neutron's velocity and the magnetic field. The distribution of neutron velocities leads to azimuthal averaging of the transverse polarization components. The $560\text{-}\mu\text{T}$ field was chosen so that the averaged transverse component of the neutron polarization \mathbf{P} varied by less than 2×10^{-3} across the detector. The spin-flipper state was reversed every 10 s. Downstream of the spin flipper, the guide field adiabatically rotates the neutron spin into the longitudinal direction, and \mathbf{P} remains longitudinal throughout the detector array.

The polarization was measured and mapped using a second polarizer as an analyzer downstream from the spin flipper [10]. A map of the estimated neutron polarization, under the assumption of a perfect spin flipper and identical polarization and analyzing power ($P = A_p$), is shown in Fig. 5. Though neither of these assumptions is accurate, this provides a lower limit on the neutron polarization [10]. The increase in polarization from left to right is a property of the polarizer and leads to effects that are discussed in Sec. VIF. When the neutron polarization is averaged across the beam, its lower limit is $P > 0.91$ (90% C.L.), and we use $P = 0.95 \pm 0.05$ in the analysis of D . The polarization and spin-flipper characteristics appeared to be quite stable over long periods, and the measured polarization was consistent with that measured for the first emiT run, which set the lower limit of $P > 93\%$ [9].

C. Magnetic fields

Within the detector region, the magnetic field was maintained by a set of eight 0.95-m-diameter coils uniformly spaced over 2 m. The outermost coils had independently adjustable currents, while the inner six coils were connected

in series. The current, alignment, and position of each coil were set to optimize the longitudinal field uniformity. An array of longitudinal coils was deployed as a cosine magnet to cancel uniform transverse magnetic-field components. These coils were also used to rotate the magnetic field for the transverse-polarization calibration runs. Additional trimming of nonuniform components of the magnetic field was necessary due to the magnetized steel in the floor and magnetic fields from other instruments in the NCNR guide hall [40,41]. The currents in all coils were nominally constant with no active compensation; however, all currents were monitored, and the fields in the vicinity of the decay region were continuously measured using two three-axis flux-gate magnetometers. Magnet-current and detector-field monitor data were used to define cuts on the data as described Sec. VII A.

The magnetic field in the detector region was mapped with a three-axis fluxgate magnetometer before and after the emiT-II run. The large axial field of $560\text{ }\mu\text{T}$ made precise measurement of the transverse component difficult due to flexing of the support rail for the magnetometer; however, it was possible to estimate transverse components of $1\text{--}3\text{ }\mu\text{T}$. The corresponding magnetic-field misalignment was measured to be as large as 5.4 mrad , which was consistent with estimates based on the transverse-polarization calibration runs described in Sec. VIF.

D. Detector overview

The detector array is shown schematically in Fig. 2. The main detector chamber was milled from a single block of aluminum. The chamber was supported on kinematic mounts and included mounts for cross-hair assemblies at both the upstream and downstream ends. Beamline and detector components were mechanically positioned and aligned to better than 1 mm and 2 mrad, respectively. The alignment was checked with cross-hairs during final assembly.

The vacuum during data taking was maintained using a cryopump just downstream of the main detector chamber. In addition, liquid-nitrogen-cooled cryopanel were situated at the ends of the proton detector assembly. The vacuum measured in this region was typically in the range of $(3\text{--}4) \times 10^{-7}$ Torr. This low pressure significantly reduced backgrounds due to neutron interactions with residual gas and minimizes the possibility of scattering and neutralization of decay protons, though changes in the proton detector dead layers of roughly 3% per month, most likely due to the buildup of volatile materials, were observed.

E. Proton detectors

A proton-detector cell is illustrated in Fig. 3. Each cell consisted of a grounded box with the top and the upper half of the sides covered by a grounded wire mesh (97% transmitting) through which the recoil protons entered. Once inside the box, the protons were accelerated and focused onto the SBD (Ortec model AB-020-300-300-S) by the field produced by a cylindrical tube maintained at a negative potential with respect to ground. During the course of the experiment, the acceleration voltage was varied in the range 25 to 31 kV. Geometric constraints required that the SBD be

positioned off-center relative to the focusing tube. In addition, the cryogenic epoxy holding the silicon wafer into its mount varied in thickness by up to one millimeter around the edge of the detector ring. These and other imperfections were included in the Monte Carlo model of the proton focusing discussed in Sec. III. The proton SBD active layer was 300 μm thick and 300 mm^2 in area.

The proton detectors were periodically calibrated *in situ* with ^{241}Am and ^{109}Cd γ -ray sources. Typical detector resolution was 4 keV full width at half maximum (FWHM) but varied by several keV from channel to channel and over time. In most channels, thresholds were adjusted to reduce the count rates. This also resulted in truncating part of the accelerated proton spectrum, thus introducing a proton-energy-dependent efficiency and systematic effect discussed in Sec. VID. Low-energy tails on the proton peaks, observed in some channels, were of particular concern because of the thresholds. The source of these tails was not determined and may have been due to a combination of a number of possibilities including dead-layer buildup and scattering from the focusing tubes themselves. In addition, reversible buildup of the detector dead layers was observed to occur over time.

During the experiment, detectors showed a variety of problems, including high leakage currents and breakdown, and a portion of the data were taken with fewer than 64 operating SBDs. Over the course of the experiment, however, only a few SBDs were not operational at any one time, and when averaged over the entire run, every proton cell had a duty factor greater than about 90%.

F. Electron detectors

Electron detectors were 50×8.4 cm in area and 0.64 cm thick, made of BC408 plastic scintillators with Burle-8850 photomultiplier tubes (PMTs) at each end. The scintillator thickness was sufficient to stop a 1-MeV electron and was therefore adequate for detecting neutron-decay electrons, which have an endpoint energy of 782 keV. The scintillators were wrapped in aluminized mylar and 20- μm -thick aluminum foil to prevent charging and to shield the detectors from X-rays and field-emission electrons. This thickness of aluminum stopped electrons of energy up to about 50 keV at normal incidence and led to energy loss of 20 keV for incident electrons with energy of 200 keV. The foil and mylar were included in all Monte Carlo simulations.

Scintillation photons guided to either end of the scintillator by total internal reflection at the smooth surfaces were detected by the PMTs. An electron event requires coincidence of both PMTs within a timing window of 100 ns. The time difference of the phototube signals at the two ends of each scintillator was available to determine the electron position with a resolution of about 10 cm but was not used in the analysis.

The electron detectors were calibrated periodically during the run using a ^{207}Bi source. Conversion electrons were incident on the backside of the scintillators, passing through a thin Kapton vacuum window and through holes in the mylar and aluminum foils. Gain drifts of up to 3% per month were observed, and PMT base voltages were occasionally adjusted to stabilize the gains. Remaining drifts were compensated for

run by run in the analysis using features of the neutron-decay-electron-energy spectrum. A threshold of 80-keV detected electron energy was applied to the data in order to eliminate the effects of residual gain drifts. The effects of remaining small nonuniformities in electron-energy threshold and response are discussed in Sec. VID.

G. Monitors

The following parameters were continuously logged during data taking:

- (i) magnetic fields at two positions within the detector magnetic-field coils using three-axis fluxgate magnetometers,
- (ii) currents in all magnetic-field coils including neutron-guide solenoids and longitudinal and transverse detector coils,
- (iii) the neutron capture-flux monitor,
- (iv) proton-cell acceleration voltage, and
- (v) SBD bias voltage and leakage current.

The cuts based on these monitor data were used to test for systematic effects and for cross-checks of the results, as discussed in Sec. VII A.

V. DATA

The neutron-decay data consisted of proton-electron coincidence events that recorded which detectors were hit, amplitude of the pulse in each detector, spin-flipper state, and proton time of flight (t_{ep}). Data were acquired from October 2002 to November 2003 with some breaks for reactor and detector maintenance. The data were separated into runs of up to about four hours duration, and a total of 934 runs were included in the final data set.

Figure 6 shows the detected proton energy versus proton time of flight for all events. Events prior to $t_{ep} = 0$ are random coincidences and are used to estimate background rates as described in Sec. VIA. The feature near $t_{ep} = 0$ primarily consists of true coincidences that are very closely spaced in time compared to neutron-decay-proton-electron events. These prompt coincidences arise from several sources including cosmic-ray muons and neutron capture, which produces γ rays that produce a false proton-electron coincidence through Compton scattering or pair production. In Fig. 7 we show the detected proton-energy spectrum for the timing window $-0.75 < t_{ep} < 0.12$ μs as a function of detected SBD amplitude. Accelerated protons, primarily from neutron decay, produce the narrow peak at ≈ 25 keV. The broad feature at higher energy is the minimum-ionizing peak for relativistic charged particles, e.g., from high-energy γ interactions and cosmic rays. The pre-prompt data provided an estimate of the random-coincidence contribution to the background, as discussed in Sec. VIA.

Typical count rates were 3 and 100 s^{-1} for single proton and electron detectors, respectively, while the coincidence rate for the entire array was typically 25 s^{-1} . A total of 4.7×10^8 raw events were acquired. Of these, limits on magnetic field, leakage current, and other monitors removed 12% of

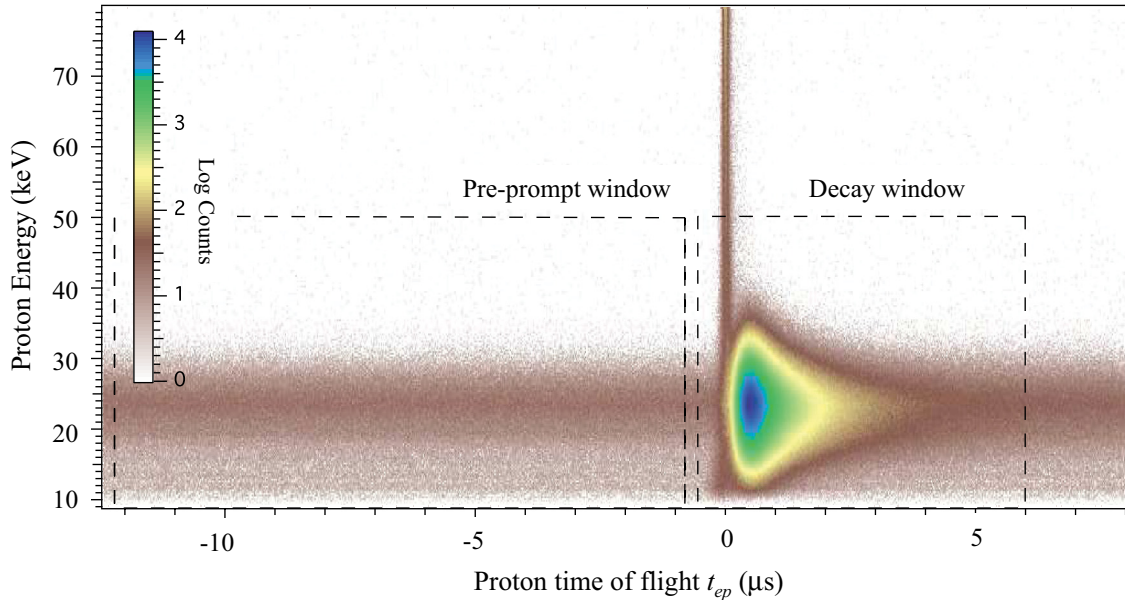


FIG. 6. (Color online) Two-dimensional spectra showing proton energy vs proton time-of-flight vs log of counts for all data. The boxes show the cuts used in the analysis (decay window) and used to determine the random-coincidence background contribution (pre-prompt window). The pre-prompt events consist primarily of accelerated decay protons in coincidence with an uncorrelated electron-detector hit.

the events, the analysis threshold on electron energy removed 14%, and the single-electron-hit requirement removed 7% of the raw events. The data were filtered by cuts on the parameters described in Sec. IV G as well as on the detected electron-energy and the requirement of a single-electron-detector hit. We also rejected events during a spin flip and during any unpaired spin-flip cycle at the end of a run in order to ensure equal time in each spin-flipper state. A summary of the final event selection is shown in Table II.

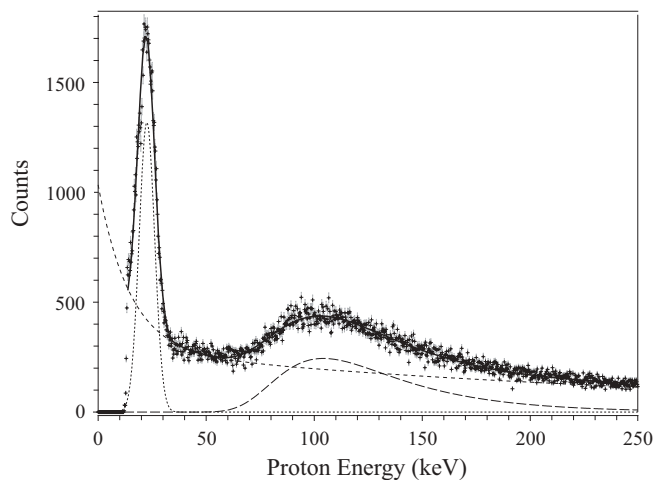


FIG. 7. Typical proton-energy spectrum for the “prompt” timing window $-0.75 < t_{ep} < 0.12 \mu\text{s}$. The data and fit are shown as plus signs and a solid line, respectively. The lines are components of the fit due to neutron-decay protons (dots), minimum ionizing (long dashes), and a low-energy continuum determined from runs with zero proton-acceleration voltage (short dashes).

Most of the data were taken with nominal proton-acceleration voltages of 28 kV with smaller data sets at 25, 27, and 31 kV. The 27-kV data were acquired during the initial running stages in 2002. Discussion of the data and results for different proton-acceleration voltages, running conditions, and detector configurations are discussed in Sec. VII A.

VI. SYSTEMATIC EFFECTS

Equation (14) is based on an ideal symmetric experiment, which incorporates the following assumptions: (a) accurate determination of the number of coincidences for each proton-cell–electron-detector combination, i.e., accurate background corrections; (b) absence of proton and electron backscattering; (c) symmetry of the detector, specifically the equivalence of proton cells and uniform proton- and electron-detection efficiencies; (d) uniformity of the neutron beam; (e) uniform longitudinal polarization; and (f) accurate determination of \vec{K}_D and P . A number of effects break the symmetries of the experiment and are accounted for by corrections to \vec{D} discussed in detail in this section.

TABLE II. Summary of the final event selection.

Description	Approximate number
Raw events	4.7×10^8
Monitor cuts	5.6×10^7 (12%)
Electron-energy threshold	6.6×10^7 (14%)
Electron-detector multiplicity	3.3×10^7 (7%)
Final event sample	3.2×10^8
Random coincidences	1.0×10^7

TABLE III. Averages over all detectors of background fractions for each background component.

Source	$\bar{\epsilon}_b$ (10^{-3})
Accidental coincidences	2 ± 2
Low-energy continuum	6 ± 2
Minimum ionizing	0.003 ± 0.002

A. Backgrounds

A valid event was defined as the coincidence of a proton-detector signal and electron-detector signal that met the selection criteria on proton and electron energy, proton time of flight, and the monitor data. Electron detection required a coincidence of both phototubes in one scintillator panel with detected electron energy above 80 keV. The proton-energy–time-of-flight window is shown in Fig. 6. Estimates of the background fractions $\epsilon^{p_i e_j}$ for each contribution are discussed below, and the averages over all detectors, $\bar{\epsilon}_b$, are given in Table III.

1. Accidental coincidences

The count rates for each spin-flipper state were corrected for accidental coincidences on a run-by-run basis by scaling the counts in the pre-prompt timing window ($-12.3 < t_{ep} < -0.75$ μ s) shown in Fig. 6. These random coincidences had the expected exponential dependence with respect to proton time of flight. A fit revealed a time constant of 2690 ± 730 μ s, which is sufficiently long that we made no adjustment for proton time of flight. This results in a correction to the background fraction $\bar{\epsilon}_b$ due to accidental coincidences estimated to be $(2 \pm 2) \times 10^{-3}$.

2. Prompt coincidences

A typical proton-energy spectrum for the prompt timing window (-0.75 to 0.12 μ s) is shown in Fig. 7. The dominant components are the peak at ≈ 25 keV due to the accelerated protons from neutron decay, minimum ionizing charged particles predominantly due to cosmic-ray muons, and a background continuum. The low-energy behavior of the continuum was studied with high-voltage-off data, which eliminated the accelerated-proton peak. This component appears to fit well to a double exponential.

B. Background-related contributions to \tilde{D}

The asymmetries $w^{p_i e_j}$ must be corrected for background to determine the background-free asymmetries $w_0^{p_i e_j}$. The correction is

$$w_0^{p_i e_j} - w^{p_i e_j} = \epsilon_b^{p_i e_j} w^{p_i e_j} - \epsilon_b^{p_i e_j} w_b^{p_i e_j}. \quad (15)$$

The first term is the multiplicative correction to $w^{p_i e_j}$ due to the dilution of the asymmetries by backgrounds. This dilution can produce a contribution if the background corrections are nonuniform and do not completely cancel when the $w^{p_i e_j}$ are combined into \tilde{D} . The multiplicative correction to \tilde{D} was determined using

measured $\epsilon^{p_i e_j}$ and $w^{p_i e_j}$ according to Eq. (15), resulting in a correction to \tilde{D} of $(0.03 \pm 0.09) \times 10^{-4}$. The multiplicative correction is dominated by the exponential components of the prompt events shown in Fig. 7. The second term in Eq. (15) is due to a possible asymmetry in the background, $w_b^{p_i e_j}$. The $w_b^{p_i e_j}$ were found to be uniform and consistent with zero across the detector and were combined according to Eq. (14) to find \tilde{D}_b , which was scaled by the total of $\bar{\epsilon}_b$ for all contributions. The additive correction to \tilde{D} was $(-0.07 \pm 0.07) \times 10^{-4}$. For the result reported in Ref. [11], no correction was made for the additive-background effect.

C. Backscattering

Backscattering events fall into two categories: (1) particles scattered from somewhere in the apparatus to a proton cell or electron detector and (2) incident protons and electrons that scattered from the respective detectors without registering a hit. Particles backscattered from the proton and electron detectors lead to multiplicative and additive corrections to the $w^{p_i e_j}$ that can affect \tilde{D} in a manner similar to background effects. Backscattering also affects the $K_D^{p_i e_j}$ and is discussed in Sec. VI G.

Backscattering corrections to \tilde{D} were determined by Monte Carlo simulations with empirical validation based on studies of the 35° and 55° proton-electron coincidences. Backscattering probabilities were similar for all proton-detector–electron-detector combinations; however, the rate of neutron-decay coincidence counts for the 35° and 55° pairings was about a factor of 15–25 less than for the 125° and 145° pairings used to determine \tilde{D} . Data from the 35° and 55° pairings are shown in the electron-energy–proton-time-of-flight plane in Fig. 8. The boxes indicate three distinct kinematic regions: primary neutron-decay events for the 35° and 55° proton-electron

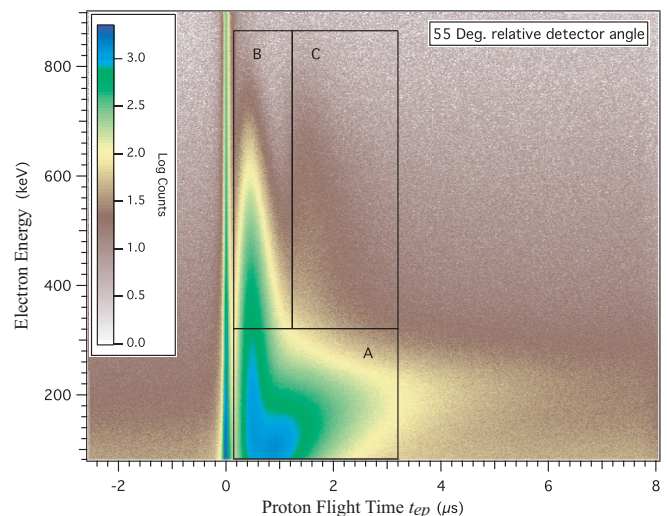


FIG. 8. (Color online) Data for electron energy vs proton-electron delay time for proton cell p_1 in coincidence with electron detector e_1 at 55° . The boxes indicate regions of kinematically allowed proton-electron coincidences (region A), electron backscattering from detector elements across from the proton cell (region B), and proton backscattering (region C).

coincidences are restricted to region A; region B consists of higher energy electrons, which are primarily electrons with initial momentum directed at large angles with respect to the detected proton but detected in the 35° or 55° electron detector due to backscattering; region C corresponds to high-energy electrons from events with large proton-electron angular separation and delayed proton time of flight, which are primarily due to proton backscattering. The backscatter fractions are estimated from the data by integrating within the boxes in Fig. 8 or by fitting the time-of-flight spectra and are consistent with the Monte Carlo predictions.

1. Electron backscattering

Electron backscattering was incorporated into the Monte Carlo simulations using PENELOPE. The multiplicative correction to \tilde{D} was determined by using estimates of the backscattering fractions from the Monte Carlo simulations to correct the measured $w^{p_i e_j}$ similarly to the background corrections given in Eq. (15). With the correction applied, \tilde{D} changes by $(0.11 \pm 0.03) \times 10^{-4}$, where the uncertainty reflects the 20% uncertainty assigned to the Monte Carlo results due to limitations of the detector and beam model and limited knowledge of backscattering at these low energies. The additive correction would vanish for isotropic backscattering and uniform detector efficiency; however, the beam expansion, magnetic field, and detector elements break these symmetries. The result for the additive correction to \tilde{D} is $(0.09 \pm 0.07) \times 10^{-4}$ and is limited by the statistical precision of the Monte Carlo simulation due to the small fraction of backscatter events. This additive-electron-backscattering correction was not applied in the analysis reported in Ref. [11].

2. Proton backscattering

Backscattered protons in principle affect the asymmetries similarly to backscattered electrons. Proton-backscattering probabilities determined with SRIM were input into the Monte Carlo simulation. While the proton-backscattering probabilities at the energies characteristic of neutron decay are comparable to electron-backscattering probabilities, there is a large probability for neutralization [46]. Detailed calculations lead to the conclusion that proton-backscattering effects on \tilde{D} are approximately an order of magnitude smaller than electron-backscattering effects, and we set an upper limit on the correction to \tilde{D} of 0.03×10^{-4} . This upper limit is reflected in the uncertainty given in Table IV.

D. Efficiency corrections

Eq. (9) shows that the $w^{p_i e_j}$ depend directly on the energy dependence of the efficiencies through the β and neutrino correlations. Spatial variations of the proton- and electron-energy-dependent efficiencies break the symmetry assumed in combining proton-cell data as given in Eq. (14). In this section, we discuss the effects of axial and azimuthal variation of the electron energy thresholds and the variation of the proton-energy-dependent efficiency as a result of changes of individual SBD thresholds.

TABLE IV. Systematic error corrections in units of 10^{-4} . We determined upper limits on the magnitude of corrections for proton backscattering, polarization nonuniformity, and the ATP-twist effect, and thus these corrections are indicated as 0 with the upper limit indicated by the uncertainty. Corrections for spin-correlated flux and spin-correlated polarization are less than 0.01×10^{-4} , and thus no correction was made, and the contribution to the uncertainty was negligible.

Source	Correction	Uncertainty
Background additive	-0.07	0.07
Multiplicative ^a	0.03	0.09
Electron backscattering additive	0.09	0.07
Multiplicative	0.11	0.03
Proton backscattering	0	0.03
Electron threshold nonuniformity	0.04	0.10
Proton-threshold effect	-0.29	0.41
Beam expansion	-1.50	0.40
Polarization nonuniformity	0	0.10
ATP-misalignment	-0.07	0.72
ATP-twist	0	0.24
Spin-correlated flux	0	<0.01
Spin-correlated polarization	0	<0.01
Polarization	^b	0.04 ^c
K_D	^b	0.04
Total corrections	-1.66	0.97

^aIn Ref. [11] this entry had a typographical error.

^bPolarization and K_D are included in the definition of \tilde{D} .

^cAssumes polarization uncertainty of 0.05.

1. Nonuniform electron-energy thresholds

From Eq. (12), it can be seen that the proton-electron correlation leads to a difference of $\langle \beta_e \rangle$ for the two electron detectors that pair with p_1 (e.g., e_3 and e_2). This leads to a contribution to v^{p_i} from the β asymmetry (A -coefficient correlation), which cancels for a uniform neutron beam and detector when the v^{p_i} from two axially symmetric proton cells are averaged (e.g., cells p_1 and p_{15}). In the case of nonuniform electron-detector efficiencies, specifically due to spatial variation of the electron-energy threshold, this cancellation is not perfect and leads to a dependence on the azimuthal proton-cell position, i.e., a dependence on proton-detector plane; however, another symmetry arises because each electron detector is paired with two azimuthally opposed proton cells and contributes to the two v^{p_i} with opposite sign. This results in cancellation of any efficiency variation to first order in $\sin \phi^{p_i}$, as given in Eq. (13). The $\sin 2\phi^{p_i}$ dependence of v^{p_i} , however, does not cancel.

The electron energy thresholds were measured to differ between upstream and downstream phototubes by as much as 10–20 keV, resulting in the $\sin 2\phi^{p_i}$ dependence evident in Fig. 9, where the combined data for v^{p_i} for all proton cells in a single detector plane are shown as a function of ϕ^{p_i} . The dashed line shows the best fit to $\sin \phi^{p_i}$ -only, and the solid curve includes a $\sin 2\phi^{p_i}$ contribution. Monte Carlo studies with an upstream-downstream variation of electron threshold of approximately 10 keV for a single electron detector show a similar $\sin 2\phi^{p_i}$ contribution.

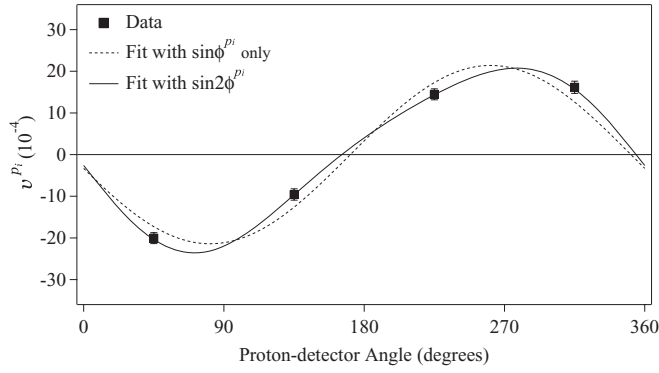


FIG. 9. Results for v^{p_i} averaged for each of the four proton-detector planes. The dashed line is a fit to $\sin \phi^{p_i}$, and the solid line includes a $\sin 2\phi^{p_i}$ term. Monte Carlo simulations show that a $\sin 2\phi^{p_i}$ term will arise from ≈ 10 keV differences of the electron-detection thresholds for upstream and downstream ends of the electron detectors.

The Monte Carlo results also show that the axial dependence of the electron thresholds are canceled when all four proton-detector planes are combined and therefore does not contribute significantly to \tilde{D} as long as the proton efficiencies are energy independent. The variation of proton-energy-dependent efficiency, discussed below, could couple with an electron-threshold variation. Coupling between the observed relative efficiencies of proton detection and the Monte Carlo model of electron-threshold variations lead to a correction to \tilde{D} of $(0.04 \pm 0.1) \times 10^{-4}$.

2. Proton-SBD efficiency variations (shift-threshold effect)

A set of typical calibrated proton-cell SBD spectra is shown in Fig. 10 for both spin-flipper states and for both 125° and 145° coincidence angles. The electron detector at 145° has approximately twice the rate as the 125° detector due to the proton-electron correlation, which favors back-to-back proton and electron momenta. The spectra for the two spin-flipper states differ in both area (total number of counts, $N_{\pm}^{p_i e_j}$) and spectral distribution due to the β asymmetry, which affects

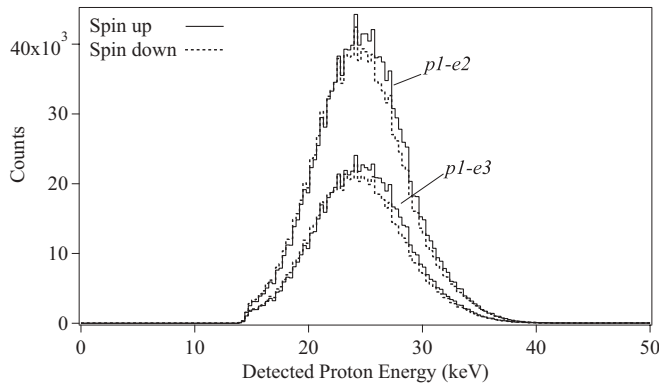


FIG. 10. Proton-cell SBD spectra for a single proton detector (e.g., p_1) for both electron detectors (e_2 and e_3) for both spin-flipper states: up (neutron polarization parallel to \mathbf{B}) and down (neutron polarization antiparallel to \mathbf{B}).

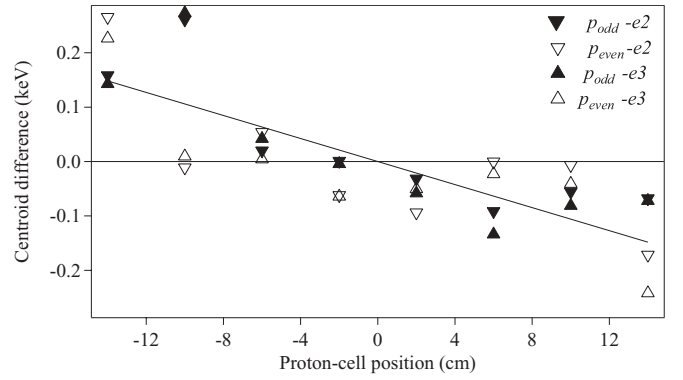


FIG. 11. Differences of proton-detector centroids for proton cells p_1 - p_{16} paired with electron detectors e_2 and e_3 as a function of axial position. Odd and even proton detectors refer to p_1, p_3, \dots and p_2, p_4, \dots , respectively. Upward pointing triangles are for positive cross product $\mathbf{p}_p \times \mathbf{p}_e$, and the triangles pointing downward are for negative cross product. Fluctuations from cell to cell reflect variations of energy loss and other features of individual proton cells. The solid line is a linear fit to the centroid differences.

the angular distribution of electrons and thus the proton momentum. The energy deposited in the SBD in turn depends on the incident proton momentum, position, and angle of incidence on the proton cell. We characterize each spectrum by a centroid, which depends on the neutron spin state. The difference of the centroids for the two spin-flipper states varies with the axial position of each proton cell and varies in magnitude from zero to about 125 eV. In Fig. 11, we show the difference of the centroids as a function of proton-cell position for a single proton-detector plane (p_1 - p_{16}) paired with the electron detectors at 125° and 145° .

For the SBD spectra shown in Fig. 10, the low-energy portion shows that the applied threshold allows detection of almost all of the protons for both electron detectors and both spin-flipper states; however, the SBD thresholds were adjusted throughout the run in order to maintain the electronics' noise at a manageable level and minimize dead-time losses. In some cases, the threshold cut significantly into the SBD spectra, introducing a proton-energy-dependent detection efficiency. Due to the dependence on neutron polarization, this energy dependence could lead to a significant effect on the $w^{p_i e_j}$ for an SBD with a high threshold, though the effect on v^{p_i} is largely mitigated because the low-energy portion of the proton energy spectrum is nearly equally affected for the two electron detectors. Figure 12 shows that there are several notable anomalies of the $w^{p_i e_j}$, for example, for proton cells p_4 and p_{12} ; however, as expected, the anomalies are similar for both electron-detector pairings. Thus the v^{p_i} , as shown in Fig. 13, do not appear to fluctuate significantly compared to other proton cells.

To estimate the effect on \tilde{D} , neutron-polarization-dependent proton-energy spectra were generated by Monte Carlo simulations for all proton-detector–electron-detector pairs and convoluted with a model of each detector's response. The model detector response (modified Gaussians with separate widths above and below the centroid) were based on measured proton-SBD spectra. These spectra and the thresholds varied significantly during the course of the

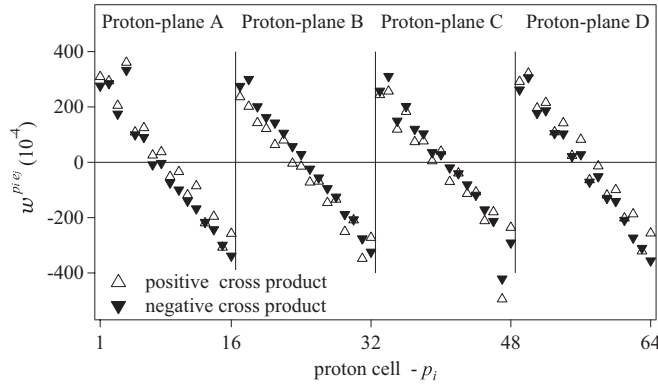


FIG. 12. $w^{pi e_j}$ for all proton cells paired with electron detectors at 125° and 145° with respect to the proton plane. The open triangles pointing upward are for positive cross product $\mathbf{p}_p \times \mathbf{p}_e$, and the filled triangles pointing downward are for negative cross product. The v^{pi} shown in Fig. 13 are found from the difference of the two $w^{pi e_j}$ for each proton cell.

experiment, and the set of response functions was therefore based on an average over the data subsets. Parameters of the response functions were varied over a range characteristic of the variations during the experiment in order to estimate the uncertainties. The estimated correction to \bar{D} is $(-0.29 \pm 0.41) \times 10^{-4}$. The effect was also estimated, with consistent results, by correcting $w^{pi e_j}$ on a day-by-day basis using the centroid shift and slope at threshold.

E. Beam expansion correction

The neutron-beam expansion affects the cancellation of the β asymmetry [Eq. (12)] for axially paired proton cells because the average of the electron velocity $\langle \beta_e \rangle$ depends on the radial size of the beam: for decay vertices further from the center of the detector, the proton-electron angular separation is larger, which corresponds to higher energy electrons. This would be largely canceled by the combination of the v^{pi} prescribed by Eq. (14) because the difference of $\langle \beta_e \rangle$ enters with opposite sign for two adjacent proton cells (p_1 and p_2);

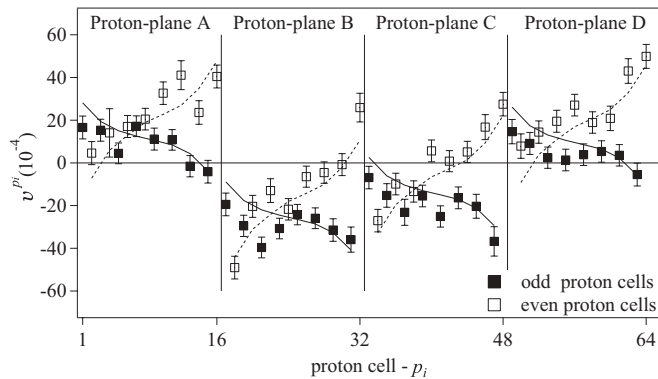


FIG. 13. v^{pi} for all proton cells for the experiment. The solid and dashed lines are from the Monte Carlo simulation for realistic experimental conditions shown in Fig. 14 with adjustment for each proton-cell plane to account for transverse-polarization and beam-shape effects.

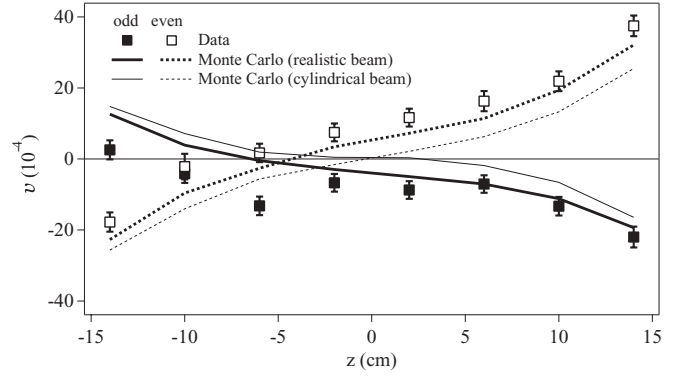


FIG. 14. Illustration of the contribution of broken symmetries to \bar{D} for longitudinal polarization. The $560\text{-}\mu\text{T}$ magnetic field makes the magnitude of v^{pi} larger for even detectors than for odd detectors largely due to the difference of $\langle \beta_e^{pi e_j} \rangle$ for the two electron detectors. The expanding beam makes the difference of average electron velocities larger for downstream detectors since the larger beam leads to larger proton-electron angular separation.

however, the magnetic field also affects the electron-proton angular correlation, resulting in a magnetic-field dependence of $\langle \beta_e \rangle$; i.e., the difference of $\langle \beta_e \rangle$ for the two electron detectors e_2 and e_3 is smaller for odd detectors (p_1, p_3, p_5 , etc.) than for even detectors (p_2, p_4, p_6 , etc.). The result is that the dependence of v^{pi} versus z^{pi} is different for even and odd proton cells. Figure 14 shows a comparison of a uniform, nonexpanding neutron beam and the realistic beam based on the beam-distribution maps of Fig. 4.

To estimate the correction, Monte Carlo simulations were run using the measured neutron-beam distribution. A number of simulations were run with different beam distributions produced by shifting the maps by up to 2 mm and rotating by 5° , both significantly greater than the mechanical alignment constraints on the beamline and detector components. In Fig. 15 we show the results for the beam expansion effect as a function of magnetic field. The estimated correction to \bar{D} for $B = 560 \mu\text{T}$ is $(-1.5 \pm 0.4) \times 10^{-4}$, where the uncertainty

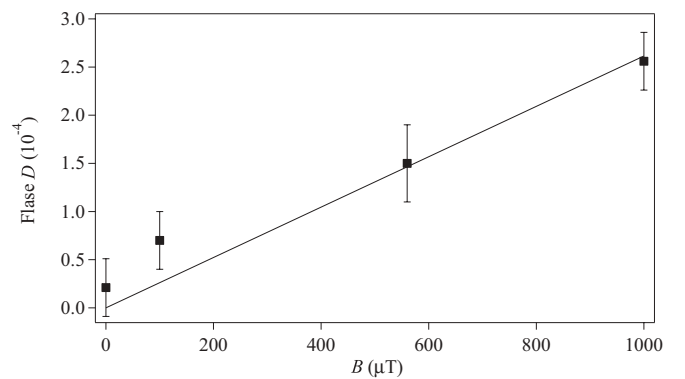


FIG. 15. The beam expansion effect as a function of magnetic field determined by Monte Carlo simulations using the measured beam profiles. The solid line is a fit to the slope, constraining the effect to zero at $B = 0$. The error bars represent the statistical uncertainty of the Monte Carlo simulations.

is mainly due to the estimated change of the effect as the beam-distribution models were varied.

F. Transverse-polarization effects

As discussed in Sec. II B, transverse asymmetries arise in the experiment due to the polarization misalignment with respect to the detector axis. The misalignment was determined from the data including transverse-polarization calibration runs combined with Monte Carlo simulation of the beam-shape effects and by magnetic-field maps measured before and after the run. The transverse polarization leads to a contribution $v_T^{p_i}$ given in Eq. (13). For uniform-symmetric beam and polarization, $v_T^{p_i} \propto \sin(\phi_P - \phi^{p_i})$ and is canceled when data from two opposing proton cells are combined; however, due to the asymmetric neutron beam, the cancellation is not complete. Displacement of the beam perpendicular to the transverse polarization would result in a contribution to \tilde{D} that is the product of the polarization misalignment and the *perpendicular* misalignment of the beam. This is called the ATP or asymmetric-beam-transverse-polarization effect. An additional effect arises if the transverse polarization is nonuniform, specifically if $\sin \phi_P$ varies along the axis of the detector.

1. Asymmetric-beam-transverse-polarization effect

We have studied the ATP effect using transverse-polarization calibration runs. Data from a transverse-polarization calibration run, which amplifies the ATP effect, is shown in Fig. 16. This amplified effect was then scaled by the size of the transverse polarization for the experiment to determine the effect on \tilde{D} . Calibration runs at several azimuthal angles ϕ_P mapped out the effect to provide a more accurate estimate. The size of the effect was also estimated in Monte Carlo simulations with $\theta_P = 90^\circ$ and several different values of ϕ_P .

For calibration runs, the axial-magnetic-field coils were used to cancel the Earth's field component along the detector axis, and the transverse-field coils were used to produce a field of about $100 \mu\text{T}$ perpendicular to the detector axis. The azimuthal angle could be selected; however, due to power supply limitations, the magnitude of the transverse field could

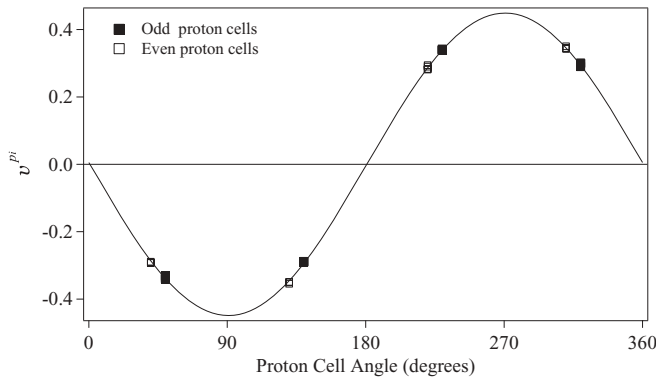


FIG. 16. Results of a transverse-polarization calibration run with $\phi_P = 0^\circ$, i.e., polarization pointing in the \hat{x} direction (see Fig. 2 for coordinate system definitions). Each point combines data for two proton cells with the same $|z^\alpha|$. The solid line is a fit to the form of Eq. (13).

not be maintained at $100 \mu\text{T}$ for all azimuthal angles. In Fig. 16, we show the average $v_T^{p_i}$ for even and odd proton cells as a function of ϕ^{p_i} from a transverse-polarization calibration run with $\theta_P = 90^\circ$ and $\phi_P = 0^\circ$. A total of 11 polarization-calibration runs were taken over the course of the experiment. For each run, the amplitude and the offset are determined by fitting the data to a sinusoid. The average amplitude for all calibration runs with $\theta_P = 90^\circ$ is

$$\langle v_T \rangle = 0.456 \pm 0.013, \quad (16)$$

where the uncertainty is the standard deviation of the 11 best-fit amplitudes.

For the data runs, θ_P is small; thus the asymmetric beam shape contributes significantly to the ϕ^{p_i} dependence of the v^{p_i} . The beam maps shown in Fig. 4 show that, in addition to the beam expansion, the center of gravity of the beam is horizontally displaced from the detector axis and rises in the vertical direction for the downstream map. To separate the beam-shape and transverse-polarization effects, the v^{p_i} were corrected for the beam-shape effect, which was determined from Monte Carlo simulations with no transverse polarization. The value of $\sin \theta_P$ is found by dividing the amplitude of a sinusoid fit to the corrected v^{p_i} by the average amplitude from the transverse-polarization calibration runs. In Fig. 17, we show results of Monte Carlo studies for the beam-shape effect along with data and the resulting estimate of the transverse-polarization effect. The Monte Carlo results for the beam-shape effect are very sensitive to the small differences in the beam-map registration and orientation. This results in large uncertainties in the transverse-polarization direction. The results are

$$\sin \theta_P = (8.5 \pm 4.3) \times 10^{-3}, \quad \phi_P = 40^\circ \pm 72^\circ.$$

The uncertainty is determined from the uncertainty on $\langle v_T \rangle$ and errors arising from the beam-shape correction and the fit to the $\sin 2\phi_P$ effect (Fig. 9). Alternatively, using the

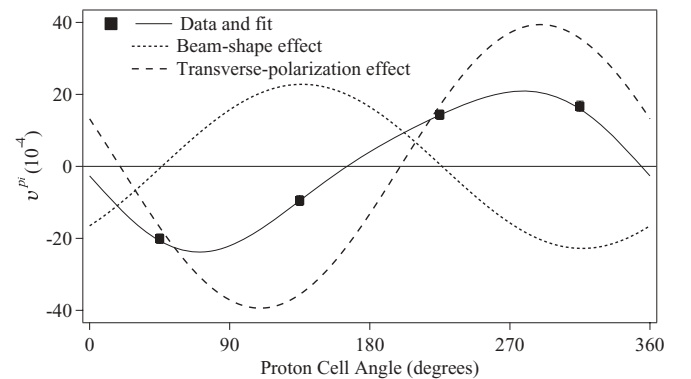


FIG. 17. Beam-shape and transverse-polarization effects on v^{p_i} . The filled squares show the average v^{p_i} for each proton-detector plane as a function of azimuthal angle for the experiment. The solid line is a fit to the data including the $\sin 2\phi^{p_i}$ contribution. The dotted and dashed lines are, respectively, the estimated effects of the beam shape and the transverse polarization. The beam-shape effect was determined by Monte Carlo simulations for the beam maps shown in Fig. 4; the transverse polarization effect was estimated from the difference of the $\sin \phi^{p_i}$ -only fit (Fig. 9) and the beam-shape effect.

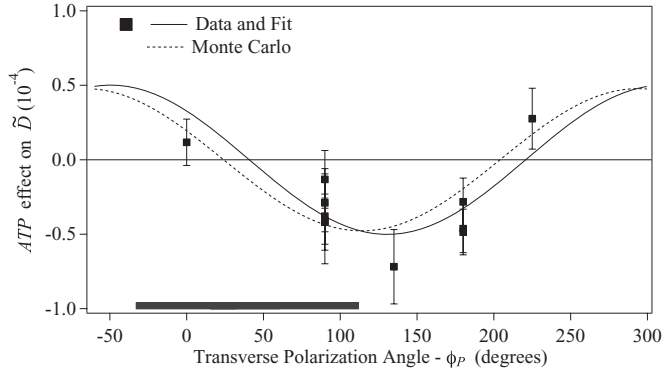


FIG. 18. ATP effect (\tilde{D}_{ATP}) as a function of ϕ_P . The data points were determined from the 11 polarization-calibration runs scaled by $\sin\theta_P = 8.5 \times 10^{-3}$. The solid line is a sinusoidal fit to the data with the offset constrained to be zero. The dashed line, given by $0.48 \times 10^{-4} \sin(\phi_P - 204^\circ)$, is the Monte Carlo prediction based on beam maps for $\sin\theta_P = 8.5 \times 10^{-3}$. The horizontal bar extending from -33.1° to 112.1° shows the range of ϕ_P based on Monte Carlo estimates using reasonable variations of the beam-map registration.

magnetic-field maps discussed in Sec. IV C, we estimate

$$\sin\theta_P = (3.8 \pm 1.0) \times 10^{-3}, \quad \phi_P = 45^\circ \pm 5^\circ,$$

which is consistent with the analysis using the data and beam-shape correction. To determine the ATP correction, we use the 1σ limits from the transverse-polarization calibration runs, which give

$$\sin\theta_P \leq 12.8 \times 10^{-3}, \quad -32^\circ \leq \phi_P \leq 112^\circ.$$

These limits provide more conservative bounds on the ATP effect than those based on the magnetic-field maps.

In Fig. 18, we show the data with fit and the result for the Monte Carlo model of the experiment for $\sin\theta_P = 8.5 \times 10^{-3}$. From the fit and the values of θ_P and ϕ_P given above, we determine the correction to \tilde{D} of $(-0.07 \pm 0.72) \times 10^{-4}$. The relatively large uncertainty is due to the uncertain azimuthal orientation of the polarization.

2. Polarization twist

A twist of the polarization, that is, an upstream-downstream difference in ϕ_P , would not be canceled in combining 16 proton-cell v^{Pi} into \tilde{D} . A limit on the polarization twist was estimated by separating data for upstream ($z^{Pi} \leq -6$ cm) and downstream ($z^{Pi} \geq 6$ cm) proton cells and correcting for beam-shape effects. The beam-shape-corrected data are shown in Fig. 19. Sinusoid fits provide estimates for ϕ_P for upstream and downstream portions of the detector of $\phi_P^{up} = 14.3^\circ \pm 5.2^\circ$ and $\phi_P^{dn} = 16.6^\circ \pm 6.0^\circ$, from which we estimate a maximum upstream-downstream difference of $\Delta\phi_P = 13.5^\circ$. We double $\Delta\phi_P$ to account for a change over the entire length of the proton-detector plane and use the fits from Fig. 18 to set an upper limit on the magnitude of the ATP-twist effect of \tilde{D} of 0.24×10^{-4} . This upper limit is reflected in the ATP-twist uncertainty listed in Table IV.

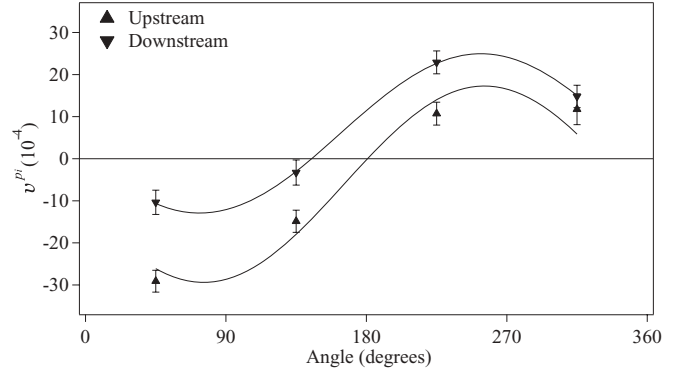


FIG. 19. Data, corrected for beam-shape effects, for v^{Pi} for upstream and downstream proton cells. The solid lines indicate sinusoidal fits with $\phi_P^{up} = 14.3^\circ \pm 5.2^\circ$ and $\phi_P^{dn} = 16.6^\circ \pm 6.0^\circ$.

3. Polarization nonuniformity

A nonuniform neutron polarization affects the cancellation of the electron (A) and antineutrino (B) asymmetries in \tilde{D} . The polarization map, which measures the combination of neutron-beam polarization P and the analyzer power A_P , is shown in Fig. 5. By assuming $P = A_P$, the polarization as a function of position was convolved with the density of neutron-decay vertices determined by Monte Carlo simulations to determine an effective polarization for the decays detected in each proton cell. This was also studied by using data from both transverse-polarization calibration runs and normal running. This effective polarization varied by a few percent along the beam axis due to the beam expansion; however, the average over all cells in each proton detector varied by less than 0.005. The effect on \tilde{D} was estimated by Monte Carlo simulations using the averaged polarization for each proton-detector plane. A possible transverse polarization gradient ($\frac{\partial P}{\partial x}$ or $\frac{\partial P}{\partial y}$) was also investigated with the Monte Carlo simulations and found to have a negligible effect.

G. Uncertainties in polarization and K_D

Uncertainties in P and K_D lead to errors proportional to \tilde{D} . The polarization analysis described in Sec. IV B results in the lower limit $P > 0.91$ (90% C.L.), and we take $P = 0.95 \pm 0.05$ for the purpose of analysis. The resulting contribution to the uncertainty on \tilde{D} is $0.05\tilde{D}$, which is given in Table IV. The kinematic quantities K_D^{Pi} depend on the proton-electron angular separation due primarily to the cross product $\mathbf{p}_p \times \mathbf{p}_e$ and are different for the 125° and 145° proton-detector-electron-detector pairs. The K_D^{Pi} were determined by Monte Carlo simulations, and a number of parameters were varied, including beam size and shape, electron backscattering fraction, and electron-energy threshold. For proton-detector-electron-detector pairings at 125° and 145° we find $|K_D^{125}| = 0.420 \pm 0.008$ and $|K_D^{145}| = 0.335 \pm 0.016$, where the uncertainties estimate the variation of K_D as the Monte Carlo parameters were varied. The average, used to determine \tilde{D} [see Eq. (12)], is

$$\bar{K}_D = \frac{1}{2}(|K_D^{125}| + |K_D^{145}|) = 0.378 \pm 0.019. \quad (17)$$

The resulting contribution to the uncertainty is $0.05\tilde{D} = 0.04 \times 10^{-4}$.

H. Spin flip and timing errors

Errors in the $w^{p_i e_j}$ can also arise if the neutron polarization, flux, or counting time in each spin-flipper state is dependent on the spin-flipper state. In these cases, the error is approximately proportional to \tilde{D} . For example, for the neutron flux or density, the count rates would be modified such that $N_{\pm}^{p_i e_j} = N_{0\pm}^{p_i e_j} (1 \pm \frac{\delta_F}{2})$, where $N_0^{p_i e_j}$ is the count rate for a spin-flip-symmetric experiment and δ_F is the fractional change in the flux. In the event of a dependence of the flux on the spin-flipper state, the asymmetries would be modified from the spin-flip-symmetric asymmetries $w_0^{p_i e_j}$. The measured asymmetry is

$$w^{p_i e_j} \approx w_0^{p_i e_j} + \delta_F - w_0^{p_i e_j} \delta_F^2 + \delta_F (w_0^{p_i e_j})^2. \quad (18)$$

When the differences of the $w^{p_i e_j}$ are combined into the v^{p_i} and finally \tilde{D} , the correction is

$$\tilde{D}_0 - \tilde{D} \approx \delta_F^2 \tilde{D} - O(\tilde{D}^2), \quad (19)$$

where we assume the measured \tilde{D} is approximately equal to the corrected \tilde{D}_0 . A spin-flip-correlated counting time difference (δ_T) and polarization difference (δ_p) introduce similar corrections.

Measured limits on the flux and counting time correlations with spin-flipper state are $\delta_F < 0.004$ and $\delta_T < 10^{-8}$, respectively. Thus the corrections to \tilde{D} due to spin-flip-correlated flux and counting time variations are less than 0.01×10^{-4} . The spin-flipper efficiency was estimated to be greater than 0.95, implying $\delta_p < 0.05$, corresponding to a correction to \tilde{D} of less than 0.04×10^{-4} .

I. Summary of systematic error corrections

The corrections to \tilde{D} are summarized in Table IV. The polarization and instrumental constants P and \bar{K}_D are included in the definition of \tilde{D} and are not included as corrections; however, the uncertainties on both are included in the table. The total correction is the sum of all corrections. The uncertainties are independent and are therefore combined in quadrature to determine the total systematic-error uncertainty.

VII. RESULTS

A. Cross-checks

Several cross-checks have been performed to validate the analysis and search for systematic errors. All cross-checks were performed on blinded data. The cross-checks fall into three main categories: (1) varying the cuts on experimental parameters, (2) breaking up the data into subsets, and (3) alternative definitions of \tilde{D} that would be equivalent for an ideal experiment.

1. Data cuts

The original cuts on experimental parameters listed in Sec. IV G were established using nominal operating parameters within ranges set by typical variations that produced

useful data (e.g., for the flux-gate magnetometer \hat{z} component: $5.56 \leq B_z \leq 5.62$ G). To investigate the effects of the cuts, the nominal window was expanded by a factor of 2 in most cases (i.e., $5.53 \leq B_z \leq 5.65$ G), and the change in \tilde{D} was noted. For the minimum electron energy, the cut was lowered to 40 keV, which was below the threshold in some channels, and for electron-detector multiplicity, the cut was changed from one to two. With the exception of the proton-acceleration voltage discussed below, \tilde{D} changed by less than 0.1×10^{-4} , i.e., less than 5% of the statistical error.

2. Data-subset studies

Each independent measurement of \tilde{D} combines v^{p_i} from 16 proton cells, all of which have relatively high efficiency for proton-electron coincidences; however, during the experiment, individual proton-cell SBDs were turned off for extended periods due to high leakage currents or noise. Possible variations of the results due to varying experimental conditions were studied by breaking up the blinded data into subsets with roughly equal statistical weight. Subsets were separated by several possible changes including proton-acceleration voltage, number of operating SBDs, and changes to the magnetic field prior to transverse-polarization calibration runs. For each of the four \tilde{D} measurements, 16 operating SBDs are required; however, a number of data subsets had one or more proton cells missing, in which case we report the weighted average of all available full sets of 16 proton cells. The results for the subsets are shown in Fig. 20. A possible correlation of \tilde{D} with high voltage was revealed in the study of cuts and investigated with data subsets shown in Fig. 20. Assuming \tilde{D} is independent of acceleration voltage results in $\chi^2 = 10.4$ for 12 degrees of freedom. Allowing a linear dependence of \tilde{D} with acceleration voltage results in $\chi^2 = 5.6$ for 11 degrees of freedom. The change in χ^2 implies a 2.1σ slope. In addition, the acceleration-voltage dependence of the focusing properties was extensively studied by Monte Carlo simulations, which showed no effect correlating \tilde{D} with acceleration voltage. We therefore consider the preference for a slope to be an accidental correlation.

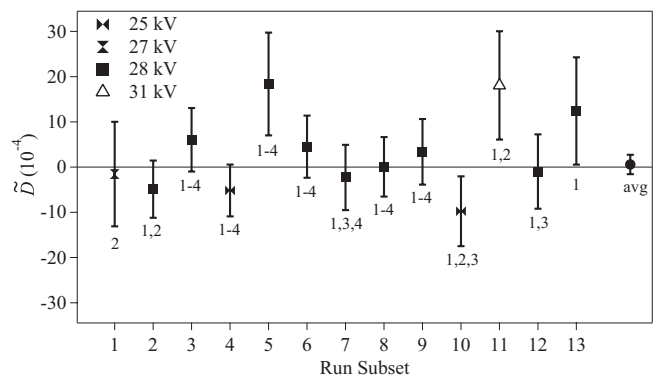


FIG. 20. Results for \tilde{D} by data subset. The proton-acceleration voltage and the proton-cell sets included for each subset are indicated. (Proton-cell set 1 refers to $|z_{p_i}| = \pm 2$ cm, etc.) The weighted average of all subsets is 0.58 ± 2.14 with $\chi^2 = 10.4$ for 12 degrees of freedom.

3. Alternative definitions of D

The definition of \tilde{D} given in Eq. (14) averages the smallest number of proton cells (i.e., 16) that cancel the β and neutrino asymmetries in the presence of transverse polarization and the 560- μ T magnetic field. Our final result, the weighted average of the four independent determinations of \tilde{D} , thus has the smallest possible statistical error. For a uniform detector and beam, D can also be defined as (a) the simple average of all 64 v^{p_i} , which differs from \tilde{D} only due to small changes in weighting of the individual v^{p_i} ; (b) the average of the combined data from four individual proton-detector planes; (c) the offset when the v^{p_i} are fit to a sinusoid [Eq. (13)]; (d) the offset for the sinusoid fit of the averages of v^{p_i} for each proton-detector plane; or e) the paired proton-cell approach used in the analysis of emiT-I data [9]. The results for D are all found to be consistent with \tilde{D} for all analyses based on v^{p_i} , i.e., (a)–(d). The paired-proton-cell approach, method (e), is known to be very sensitive to the proton-threshold effect discussed in Sec. VID and produced a significantly different value. Correcting for the estimated proton-threshold effect on D based on day-to-day correction of the $w^{p_i e_j}$ yielded a value consistent with \tilde{D} . Cross-checks were also performed on data subsets and found to be consistent with the exception of the 31-kV data for which a large number of proton cells were not operating.

A blind analysis of the asymmetries was adopted by adding a quantity $K_D^{p_i e_j} \mathcal{B}$ to each $w^{p_i e_j}$ [Eq. (9)] so that when \tilde{D} was extracted from Eq. (14) it was offset from the true value by \mathcal{B} , where $-0.01 \leq \mathcal{B} \leq 0.01$. The factor \mathcal{B} was revealed and subtracted as the final analysis step, after the corrections for systematic errors and all uncertainties were determined.

B. Final result

When averaged over the entire run, each proton cell was operational for a majority of the time and had a high average efficiency. We can therefore combine counts for the entire run to determine the v^{p_i} and to extract \tilde{D} for each set of 16 proton cells. The results for the four separate \tilde{D} are presented in Fig. 21 and Table V. The weighted average of the four is

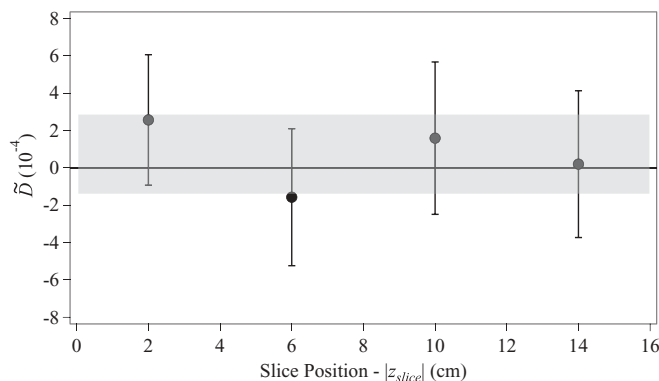


FIG. 21. Results for \tilde{D} for the entire experiment for each set of 16 proton cells. The weighted average, indicated by the shaded region, is 0.72 ± 1.89 with $\chi^2 = 0.8$ for three degrees of freedom.

TABLE V. Results for the experiment for the four independent proton-cell sets in units of 10^{-4} . Uncertainties are statistical errors only.

Proton-cell set	$ z $ (cm)	\tilde{D}
1	2	2.57 ± 3.49
2	6	-1.57 ± 3.67
3	10	1.60 ± 4.08
4	14	0.20 ± 3.93
Average		0.72 ± 1.89

$\langle \tilde{D} \rangle = (0.72 \pm 1.89) \times 10^{-4}$. When combined with the total of the corrections listed in Table IV, our final result is

$$D = [-0.94 \pm 1.89(\text{stat}) \pm 0.97(\text{sys})] \times 10^{-4}. \quad (20)$$

This differs from the result from Ref. [11] due to refinement of the additive corrections for background and backscattering, which changed by -0.07×10^{-4} and 0.09×10^{-4} , respectively.

VIII. CONCLUSIONS

Our result represents the most sensitive measurement of D in nuclear β decay and can be interpreted in terms of possible extensions of the Standard Model. Rewriting Eq. (7) gives

$$D_{\mathcal{T}} = \frac{2|\lambda|}{1+3|\lambda|^2} \left[\sin \phi_{AV} + \frac{1}{2} \text{Im} \{ \tilde{C}_S^+ (\tilde{C}_T^+)^* + \tilde{C}_S^- (\tilde{C}_T^-)^* \} \right], \quad (21)$$

where $\tilde{C}_S^\pm = (C_S \pm C'_S)/C_V$ and $\tilde{C}_T^\pm = (C_T \pm C'_T)/C_A$, and we have neglected the order- α radiative corrections, which yield negligible contributions given existing limits on scalar and tensor currents.

If we assume no scalar or tensor currents, our result constrains the complex phase between the axial-vector and vector currents to $\phi_{AV} = 180.012^\circ \pm 0.028^\circ$ (68% C.L.). If all currents are allowed, for example due to leptoquark exchange, the equation contains five phases, making it difficult to compare the sensitivity of our experiment with respect to other probes without further assumptions. In the specific case where there are no special cancellations between terms, we estimate the sensitivity of our measurement under two different assumptions. Figure 22(a) shows the limits on the imaginary component of the scalar currents, under the assumption that the tensor currents are purely real and equal to the largest value allowed by present constraints. In this case, because the limits on \tilde{C}_T^+ are much smaller than those on \tilde{C}_T^- our result is most sensitive to the imaginary component of \tilde{C}_S^- . Figure 22(b) shows a similar plot but now under the assumption that scalar currents are purely real and equal to the largest value allowed by present constraints.

The result for D presented here has comparable statistical and systematic uncertainties. Thus an improved experiment with the same apparatus would need both more neutron decays and reduced systematic effects. A new beamline (NGC) under construction at NCNR and the PF-1 beam at ILL could provide

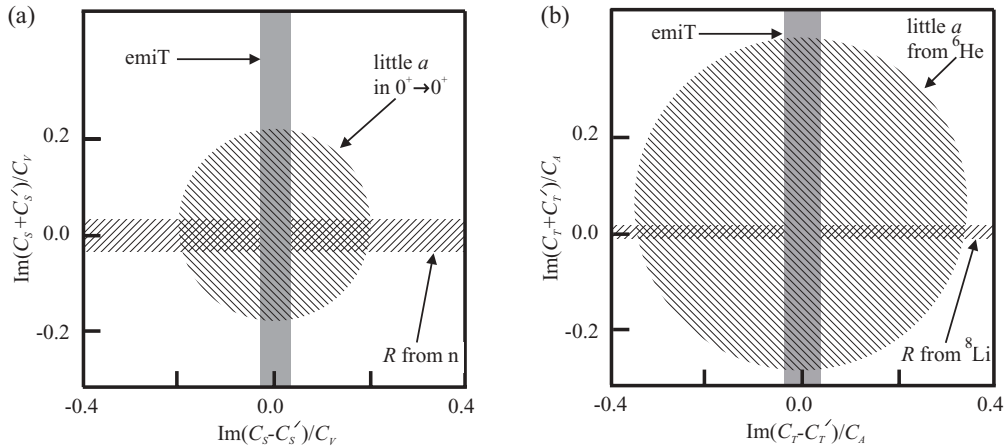


FIG. 22. Sensitivity to T -violating couplings due to scalar and tensor currents from this work compared to limits from other experiments. (a) Sensitivity to the imaginary part of scalar couplings, assuming tensor currents to be purely real and equal to the largest presently allowed value $\tilde{C}_T^- = 0.12$. The bounds labeled “ R from n ” are from Ref. [34], and those labeled “little a in $0^+ \rightarrow 0^+$ ” are from a combination of Refs. [47] and [48]. (b) Sensitivity to the imaginary part of tensor couplings, assuming scalar currents to be purely real and equal to the largest presently allowed value $\tilde{C}_S^- = 0.1$. The bounds labeled “little a from ${}^6\text{He}$ ” are from Ref. [49] and those labeled “ R from ${}^8\text{Li}$ ” are from Ref. [50]. The current work is labeled “emiT.” All allowed regions represent 95% confidence levels.

a factor of 10 or more increase of neutron decay rate. Reducing the three major systematic corrections requires eliminating the proton-threshold variations, a more symmetric neutron beam, and a smaller magnetic field. The symmetry of the neutron beam is most strongly affected by the supermirror-bender neutron polarizer, while the $560\text{-}\mu\text{T}$ magnetic field was chosen to effect sufficient velocity averaging of transverse-neutron polarization produced in the current-sheet spin flipper. An alternative polarizer is a steady-state polarized ${}^3\text{He}$ spin filter [51]. Intense cold neutron beams have been shown to affect the rubidium and ${}^3\text{He}$ polarization [52]; however, this appears to be a solvable technical challenge [53]. The $560\text{-}\mu\text{T}$ guide field can be reduced by using an adiabatic-fast-passage neutron spin flipper and effective shimming of the magnetic field along with shielding of external field perturbations. Thus a factor of 3 or more improvement in sensitivity to D appears within reach with the current apparatus. Extending the sensitivity to the level of final-state effects ($D_{\text{FSI}} \approx 10^{-5}$) and beyond is a well-motivated goal that would require an apparatus

with greater geometric efficiency for both proton and electron detectors.

ACKNOWLEDGMENTS

The authors gratefully acknowledge informative conversations with Susan Gardner, Wick Haxton, Michael Ramsey-Musolf, and Sean Tulin. The emiT apparatus and emiT-I experiment were developed by many additional collaborators including Shenq-Rong Hwang, Laura Lising, Hamish Robertson, and Tom Steiger along with Bill Teasdale. The neutron facilities used in this work were provided by the National Institute of Standards and Technology, US Department of Commerce. The research was made possible in part by grants from the US Department of Energy Office of Nuclear Physics (DE-FG02-97ER41020, DE-AC02-05CH11231, and DE-FG02-97ER41041), and the National Science Foundation (PHY-0555432, PHY-0855694, PHY-0555474, and PHY-0855310).

[1] D. Dubbers and M. G. Schmidt, *Rev. Mod. Phys.* **83**, 1111 (2011).
 [2] C. A. Baker *et al.*, *Phys. Rev. Lett.* **97**, 131801 (2006).
 [3] W. C. Griffith, M. D. Swallows, T. H. Loftus, M. V. Romalis, B. R. Heckel, and E. N. Fortson, *Phys. Rev. Lett.* **102**, 101601 (2009).
 [4] M. A. Rosenberry and T. E. Chupp, *Phys. Rev. Lett.* **86**, 22 (2001).
 [5] V. M. Abazov *et al.* (D0 Collaboration) *Phys. Rev. Lett.* **105**, 081801 (2010).
 [6] A. Riotto and M. Trodden, *Annu. Rev. Nucl. Part. Sci.* **49**, 35 (1999).
 [7] S. Davidson, E. Nardi, and Y. Nir, *Phys. Rep.* **466**, 105 (2008).

[8] T. J. Bowles, NBS Spec. Publ. (US) **711**, 69 (1986).
 [9] L. J. Lising *et al.*, *Phys. Rev. C* **62**, 055501 (2000).
 [10] H. P. Mumm *et al.*, *Rev. Sci. Instrum.* **75**, 5343 (2004).
 [11] H. P. Mumm, T. E. Chupp, R. L. Cooper, K. P. Coulter, S. J. Freedman, B. K. Fujikawa, A. Garcia, G. L. Jones, J. S. Nico, A. K. Thompson, C. Trull, J. F. Wilkerson, and F. E. Wietfeldt, *Phys. Rev. Lett.* **107**, 102301 (2011).
 [12] J. D. Jackson, S. B. Treiman, and H. W. Wyld Jr., *Phys. Rev.* **106**, 517 (1957).
 [13] J. C. Hardy and I. S. Towner, *Phys. Rev. C* **79**, 055502 (2009).
 [14] H. Abele *et al.*, *Phys. Rev. Lett.* **88**, 211801 (2002); D. Mund *et al.* arXiv:1204.0013v1.
 [15] J. Liu *et al.*, *Phys. Rev. Lett.* **105**, 181803 (2010); **105**, 219903(E) (2010).

- [16] B. R. Holstein, *Phys. Rev. C* **28**, 342 (1983).
- [17] J. D. Jackson, S. B. Treiman, and H. W. Wyld Jr., *Nucl. Phys.* **4**, 206 (1957).
- [18] C. G. Callan and S. B. Treiman, *Phys. Rev.* **162**, 1494 (1967).
- [19] S. Ando, J. McGovern, and T. Sato, *Phys. Lett. B* **677**, 109 (2009).
- [20] K. Nakamura *et al.* (Particle Data Group), *J. Phys. G* **37**, 075021 (2010).
- [21] P. Herczeg and I. B. Khriplovich, *Phys. Rev. D* **56**, 80 (1997).
- [22] P. Herczeg, in *Proceedings of the 6th International PASCOS-98*, edited by P. Nath (World Scientific, Singapore, 1998).
- [23] I. B. Khriplovich, *Nucl. Phys. B* **352**, 385 (1991).
- [24] R. S. Conti and I. B. Khriplovich, *Phys. Rev. Lett.* **65**, 3262 (1992).
- [25] W. C. Haxton, A. Höring, and M. J. Musolf, *Phys. Rev. D* **50**, 3422 (1994).
- [26] A. Kurylov, G. C. McLaughlin, and M. J. Ramsey-Musolf, *Phys. Rev. D* **63**, 076007 (2001).
- [27] J. Ng and S. Tulin, *Phys. Rev. D* **85**, 033001 (2012).
- [28] T. Soldner *et al.*, *Phys. Lett. B* **581**, 49 (2004).
- [29] R. I. Steinberg, P. Liaud, B. Vignon, and V. W. Hughes, *Phys. Rev. Lett.* **33**, 41 (1974).
- [30] B. G. Erozolimsky, Yu. A. Mostovoy, V. P. Fedunin, A. I. Frank, and O. V. Khakhan, *JETP Lett.* **20**, 345 (1974).
- [31] B. G. Erozolimsky, Yu. A. Mostovoi, V. P. Fedunin, A. I. Frank, and O. V. Khakhan, *Pisma Zh. Eksp. Teor. Fiz.* **20**, 745 (1974) [*JETP Lett. (USSR)* **20**, 345 (1974)].
- [32] A. L. Hallin, F. P. Calaprice, D. W. MacArthur, L. E. Pilonen, M. B. Schneider, and D. F. Schreiber, *Phys. Rev. Lett.* **52**, 337 (1984).
- [33] F. Calaprice, in *Hyperfine Interactions* (Springer, Dordrecht, 1985), Vol. 22.
- [34] A. Kozela *et al.*, *Phys. Rev. Lett.* **102**, 172301 (2009).
- [35] J. Sromicki, M. Allet, K. Bodek, W. Hajdas, J. Lang, R. Müller, S. Navert, O. Naviliat-Cuncic, J. Zejma, and W. Haeberli, *Phys. Rev. C* **53**, 932 (1996).
- [36] J. Sempau *et al.*, *Nucl. Instrum. Methods Phys. Res. B* **132**, 377 (1997).
- [37] J. Martin *et al.* *Phys. Rev. C* **68**, 055503 (2003); **73**, 015501 (2006).
- [38] D. A. Dahl, *Int. J. Mass Spectrom.* **200**, 3 (2000).
- [39] J. F. Ziegler, J. P. Biersack, and M. D. Ziegler, *SRIM-The Stopping and Range of Ions in Matter*, SRIM Co., Maryland, USA, 2008.
- [40] S. R. Hwang, Ph.D. dissertation, University of Michigan, 1998, pp. 21–42.
- [41] H. P. Mumm, Ph.D. dissertation, University of Washington, 2003, pp. 39–44.
- [42] L. J. Lising, Ph.D. dissertation, University of California, Berkeley, 1999.
- [43] Manufactured by LND, Inc., Oceanside, New York 11572, USA.
- [44] Y. T. Cheng, T. Soodprasert, and J. M. R. Hutchinson, *Appl. Radiat. Isot.* **47**, 1023 (1996).
- [45] O. Schaerpf, *Physica B* **156-157**, 631 (1989).
- [46] S. K. Allison, *Rev. Mod. Phys.* **30**, 1137 (1958).
- [47] E. G. Adelberger *et al.*, *Phys. Rev. Lett.* **83**, 1299 (1999).
- [48] A. Gorelov *et al.*, *Phys. Rev. Lett.* **94**, 142501 (2005).
- [49] C. H. Johnson, Fr. Pleasonton, and T. A. Carlson, *Phys. Rev.* **132**, 1149 (1963).
- [50] R. Huber *et al.*, *Phys. Rev. Lett.* **90**, 202301 (2003).
- [51] T. Chupp *et al.*, *Nucl. Instrum. Methods Phys. Res. A* **574**, 500 (2007).
- [52] M. Sharma *et al.*, *Phys. Rev. Lett.* **101**, 083002 (2008).
- [53] E. Babcock *et al.*, *Physica B* **404**, 2655 (2009).
- [54] Certain trade names and company products are mentioned in the text or identified in an illustration in order to adequately specify the experimental procedure and equipment used. In no case does such identification imply recommendation or endorsement by the National Institute of Standards and Technology, nor does it imply that the products are necessarily the best available for the purpose.