



Quartic cumulant of baryon number in the presence of a QCD critical point

D. Mroczek

*Illinois Center for Advanced Studies of the Universe, Department of Physics,
University of Illinois at Urbana-Champaign, Urbana, Illinois 61801, USA*A. R. Nava Acuna *Department of Physics, University of Houston, Houston, Texas 77204, USA*

J. Noronha-Hostler

*Illinois Center for Advanced Studies of the Universe, Department of Physics,
University of Illinois at Urbana-Champaign, Urbana, Illinois 61801, USA*P. Parotto **Department of Physics, University of Wuppertal, Wuppertal D-42119, Germany*

C. Ratti

Department of Physics, University of Houston, Houston, Texas 77204, USA

M. A. Stephanov

Physics Department, University of Illinois at Chicago, Chicago, Illinois 60607, USA

(Received 8 September 2020; accepted 22 February 2021; published 4 March 2021)

In the context of the ongoing search for the QCD critical point at the Relativistic Heavy-Ion Collider, we study the equation of state near the critical point in the temperature and baryon chemical potential plane. We use the parametric representation introduced in earlier literature, which maps the universal three-dimensional Ising equation of state onto the QCD phase diagram using several non-universal parameters. We focus on the quartic cumulant of the baryon number, or baryon number susceptibility χ_4^B , which can be accessed experimentally via net-proton fluctuation kurtosis measurements. It was originally predicted, through universality arguments based on the *leading* singular contribution, that χ_4^B and net-proton kurtosis should show a specific nonmonotonic behavior due to the critical point. In particular, when following the freeze-out curve on the phase diagram by decreasing beam energy, the kurtosis is expected to dip, and then peak, when the beam energy scan passes close to the critical point. We study the effects of the nonuniversal and thus far unknown parameters of the Ising-to-QCD mapping on the behavior of χ_4^B . We find that, while the peak remains a solid feature, the presence of the critical point does not necessarily cause a dip in χ_4^B on the freeze-out line *below* the transition temperature. The critical point contribution to the dip appears only for a narrow set of mapping parameters, when subleading singular terms are sufficiently suppressed.

DOI: [10.1103/PhysRevC.103.034901](https://doi.org/10.1103/PhysRevC.103.034901)**I. INTRODUCTION**

One of the current major thrusts of the nuclear physics program is to map out the phase diagram of quantum chromodynamics (QCD) and specifically look for a critical point in the transition from a hadron resonance gas into deconfined plasma of quarks and gluons. Because the location of the QCD critical point is yet unknown, searches are currently ongoing across the relevant region of the QCD phase diagram. At high temperatures and intermediate baryon chemical potentials, relativistic heavy-ion collisions are able to scan the phase

diagram by systematically decreasing the collision energy. This is the motivation behind the second phase of the Beam Energy Scan (BES-II) at the Relativistic Heavy-Ion Collider (RHIC) (see, e.g., Ref. [1] for a recent review). At lower temperatures and higher baryon chemical potentials, useful information can be extracted from the study of neutron stars and neutron star mergers. In fact, it appears that there may even be significant overlap in the phase diagram pertaining to the lowest beam energies in heavy-ion collisions and neutron star mergers [2,3].

Lattice QCD calculations cannot be performed at finite μ_B [4]; therefore, it is currently not possible to determine the location of the critical point from first principles. Thus, experimental searches for the critical point are central to

*Corresponding author: parotto@uni-wuppertal.de

determining its location [3,5]. The main strategy is based on the search for certain nonmonotonic dependence of fluctuations on an experimental variable, such as the collision energy \sqrt{s} , as the critical region is traversed during the scan of the QCD phase diagram [6–9]. The nonmonotonic behavior of fluctuation measures is directly related to the divergence of susceptibilities at the critical point. Therefore, susceptibilities of conserved charges are of major interest for first principle lattice calculations (see, e.g., Ref. [10] for a review). In the case of heavy-ion collisions, there are three conserved charges: baryon number (B), strangeness (S), and electric charge (Q), whereas in neutron star (mergers) only B and Q are conserved, because the typical timescales are sufficiently large for weak processes to become relevant.

Baryon number susceptibilities diverge at the critical point [11], and are, therefore, the most promising observables in its search. Since experiments measure multiplicities of *charged* particles, the closest quantities to baryon number susceptibilities, or cumulants, are the net-proton number cumulants, which show similar critical behavior [8,12,13]. Electric charge fluctuations contain a singular contribution from net-proton fluctuations, but this effect is diluted by pions and therefore it is expected to be milder [12]. Additionally, *higher order* cumulants are the most sensitive to critical behavior because they scale with higher powers of the correlation length [8,9] in the vicinity of the critical point. However, experimental measurements currently are only available up to the fourth cumulant [5,14] at large baryon densities with reasonable error bars.¹

At $\mu_B = 0$, it is possible to calculate the higher order BSQ susceptibilities on the lattice and then use them to reconstruct the lower order ones at small finite baryon densities, although with large numerical uncertainties [10,16,17]. Alternatively, effective models exist that can reproduce lattice QCD results and do include a critical point at finite baryon density [18].

Another approach is to make use of the fact that the QCD critical point is expected to be in the same universality class as the three-dimensional (3D) Ising model [19–24]. Using this approach, a specific nonmonotonic behavior of the fourth cumulant of net-proton number as a function of \sqrt{s} was proposed as a potential critical point signature in Ref. [9]. This prediction has sparked interest in the community, especially in light of the BES-II and its Fixed Target Program [25,26], which is intended to provide larger statistics and reach lower collision energies.

The baryon number susceptibility, which has a similar behavior, can be obtained from the equation of state by differentiating the pressure at fixed temperature:

$$\chi_4^B(T, \mu_B) = \left(\frac{\partial^4 p}{\partial \mu_B^4} \right)_T. \quad (1)$$

Due to the mapping between the QCD and the 3D Ising model critical equations of state, the leading divergence at the critical point comes from the fourth derivative of the Gibbs

free energy G , i.e., the third derivative of the critical order parameter (the magnetization M) with respect to the ordering (magnetic) field h at constant reduced temperature r :

$$\chi_4^{\text{Ising}}(r, h) = \left(\frac{\partial^4 G}{\partial h^4} \right)_r = \left(\frac{\partial^3 M}{\partial h^3} \right)_r. \quad (2)$$

Taking only the leading singular contribution, the predicted behavior for χ_4^B along a freeze-out curve (location of freeze-out point as a function of \sqrt{s}) starting at $\mu_B = 0$ and passing close to the critical point is as follows. From its value at $\mu_B = 0$, χ_4^B is expected to decrease at increasing μ_B , then move upwards and reach a peak in the vicinity of the critical point. This peculiar, doubly nonmonotonic behavior has motivated the experimental search for the critical point in the past years, also due to a quite similar behavior observed in the measured quantity

$$\kappa\sigma^2 = \kappa_4/\kappa_2, \quad (3)$$

where κ , $\sigma = \sqrt{\kappa_2}$ and κ_4 are the kurtosis, variance, and quartic cumulant of the net-proton number distribution. Indeed, the data from the STAR experiment [14] show $\kappa\sigma^2$ decreasing and then swinging upwards as the collision energy decreases, which resembles the behavior predicted in Ref. [9]. Although this similarity is indeed quite promising, other explanations have been proposed for the dip, such as global conservation of baryon number, which is expected to play a bigger role at low collision energies where the system is smaller [27,28]. Transport models that do not include any criticality, but do account for charge conservation, are able to reproduce the decrease at finite μ_B [29]. On the other hand, the dip also arises when extrapolating χ_4^B to finite μ_B in lattice QCD through a Taylor series [16,17]. This suggests that at least some contribution to the experimentally observed dip comes from the equilibrium equation of state, which may, in principle, be due to the approach to the critical point.

The specific nonmonotonic behavior predicted in Ref. [9] and described above focuses on the leading contribution to χ_4^B , given by χ_4^{Ising} . In the parametric equation of state we use in this paper, due to the mixing of r and h variables in the mapping of 3D Ising to QCD equation of state, there are also subleading critical contributions. The peculiarity of the QCD equation of state, as we see below in more detail, is that the leading contribution is suppressed by the smallness of the slope α_1 of the phase-separating line in the T, μ_B plane at the critical point. Therefore, unless the r, h mixing is also suppressed, the subleading critical contribution could dominate in a significant part of the critical region, thus qualitatively changing the prediction.

In this work we investigate this effect by comparing two choices of the mixing parameters, which show qualitatively different behavior of χ_4^B near the critical point. One choice is a common “default” choice in the literature, where the r, h mixing is not suppressed. Another choice is motivated by the recent work in Ref. [30], which argues that, close to the chiral (small quark mass) limit, the mixing is suppressed. While in the latter choice we recover the pattern of χ_4^B behavior similar to Ref. [9], in the former, the subleading terms significantly changes that pattern. While the peak of χ_4^B is a robust feature

¹The data for the sixth cumulant [15] are also available but with large statistical error bars and only at vanishing baryon densities.

independent of the parameter choice, the dip at $\mu_B < \mu_{BC}$ is sensitive to the choice. It is worth pointing out that we explored several other parameter choices, not shown here, and that the dip disappears in almost all of them. The second parameter choice shown here is one of the few in which the dip is still visible. The reason for this will become clear below.

This paper is organized as follows. In Sec. II we quickly summarize the procedure developed in Ref. [31] to construct equations of state for QCD with a built-in criticality in the correct universality class. In Sec. III we present a discussion of the dependence of the critical region size and shape on the different parameters, focusing on the contribution from the leading divergence. In Sec. IV we present our results for several different choices of the parameters in the Ising-to-QCD map, which lead to our conclusions, summarized in Sec. VI.

II. PARAMETRIC EQUATION OF STATE

In this work, we utilize the procedure for constructing a family of equations of states with a critical point developed in Ref. [31]. This parametric family is constructed in such a way that all its members match lattice QCD results at $\mu_B = 0$ [up to order $\mathcal{O}(\mu_B^4)$] and contain a critical point in the 3D Ising model universality class. We note that the implementation of the critical behavior is essentially the same as in Ref. [9].

The procedure can be summarized as follows:

- (i) Define a parametrization of the 3D Ising model EoS in the vicinity of the critical point, imposing the correct critical behavior. Express the magnetization M , the magnetic field h and the reduced temperature $r = (T - T_c)/T_c$ in terms of the new parameters (R, θ) with [32–35]

$$\begin{aligned} M &= M_0 R^\beta \theta, \\ h &= h_0 R^{\beta\delta} \tilde{h}(\theta), \\ r &= R(1 - \theta^2), \end{aligned} \quad (4)$$

where $M_0 \simeq 0.605$ and $h_0 \simeq 0.364$ are normalization constants, $\tilde{h}(\theta) = \theta(1 + a\theta^2 + b\theta^4)$, with $a = -0.76201$ and $b = 0.00804$, and $\beta \simeq 0.326$, $\delta \simeq 4.80$ are 3D Ising model critical exponents [33]. The parameters are within the range $R \geq 0$ and $|\theta| \leq \theta_0$, where $\theta_0 \simeq 1.154$ is the first nontrivial zero of $\tilde{h}(\theta)$.

- (ii) Map the phase diagram of the 3D-Ising model onto the $T\mu_B$ plane of QCD, *choosing* the location of the critical point. A simple linear map [36] requires six parameters, and can be written as

$$\frac{T - T_C}{T_C} = w(r\rho \sin \alpha_1 + h \sin \alpha_2), \quad (5)$$

$$\frac{\mu_B - \mu_{BC}}{T_C} = w(-r\rho \cos \alpha_1 - h \cos \alpha_2), \quad (6)$$

where (T_C, μ_{BC}) are the coordinates of the critical point, and (α_1, α_2) are the angles between the horizontal (fixed T) lines on the QCD phase diagram and the $h = 0$ and $r = 0$ Ising model axes, respectively. Finally, w and ρ are scaling parameters for the Ising-

to-QCD map: w determines the overall scale of both r and h , while ρ determines the relative scale between the two.

As in Ref. [31], we reduce the number of parameters to four by imposing that the critical point is located on the chiral transition line given by lattice QCD calculations [37]:

$$T = T_0 + \kappa_2 T_0 \left(\frac{\mu_B}{T_0} \right)^2 + \mathcal{O}(\mu_B^4), \quad (7)$$

which allows us to fix the values of T_C and α_1 by choosing μ_{BC} only.

In order to be consistent with previous work, we use the same input from lattice QCD as in Ref. [31]. Although recently new results on the QCD transition line have become available² [38,39], we note that utilizing these new results would not have any effect on the conclusions presented here.

- (iii) Impose exact matching to lattice QCD at $\mu_B = 0$ at the level of the coefficients of Taylor expansion of the pressure through

$$T^4 c_n^{\text{LAT}}(T) = T^4 c_n^{\text{Non-Ising}}(T) + T_C^4 c_n^{\text{Ising}}(T), \quad (8)$$

where c_n^{LAT} are the coefficients calculated from the lattice, and c_n^{Ising} determine the contribution to the former due to the presence of the critical point. Eq. (8) is thus the definition for the coefficients $c_n^{\text{Non-Ising}}$ required to match the given critical equation of state to lattice data without changing the singular behavior at the critical point. The procedure is carried out up to order $\mathcal{O}(\mu_B^4)$.

- (iv) Reconstruct the full QCD pressure as

$$\begin{aligned} P(T, \mu_B) &= T^4 \sum_n c_n^{\text{Non-Ising}}(T) \left(\frac{\mu_B}{T} \right)^n \\ &\quad + P_{\text{crit}}^{\text{QCD}}(T, \mu_B), \end{aligned} \quad (9)$$

where $P_{\text{crit}}^{\text{QCD}}(T, \mu_B)$ is the critical pressure from the 3D-Ising model mapped onto QCD. For additional details, we again refer the reader to Ref. [31].

With the procedure summarized here, the constructed EoS (i.e., the pressure, from which all needed derivatives can be calculated) by construction meets the initial requirements, and depends on the nonuniversal mapping between 3D Ising model and QCD through the specific choice of parameters.

In the following we focus on the observable effects of a critical point on the fourth order susceptibility of the baryon number in Eq. (1). For this purpose we can safely limit ourselves to the critical contribution to χ_4^B , because in the region we consider it largely exceeds any possible contribution from

²Both in this work and in Ref [31], we assume that the QCD transition line is a parabola, with curvature κ_2 determined in Ref. [37]. Recent results from lattice QCD [38,39] are consistent with this value of the curvature, and predict the next-to-leading order parameter κ_4 which is consistent with 0 within error bars.

TABLE I. The two sets of parameter choices we employ in this work. Notice that, as detailed in the main text, T_C and α_1 are not free parameters, but they follow from the choice of μ_{BC} due to the constraints from Eq. (7).

	μ_{BC}	T_C	α_1	$\alpha_2 - \alpha_1$	w	ρ
I	420 MeV	138 MeV	4.6°	90°	0.5, 1, 2	0.5, 1, 2
II	420 MeV	138 MeV	4.6°	-3°	0.5, 1, 2	0.5, 1, 2

non-critical-point-related physics. Moreover, since the procedure we just summarized stops at order $\mathcal{O}(\mu_B^4)$, the total contribution obtained in our approach differs from the critical one by a constant in μ_B , i.e., a function depending on the temperature only. Thus, a similar plot for the total contribution would show the same features.

III. THE SIZE AND SHAPE OF THE CRITICAL REGION

While the divergence of χ_4^B at the critical point is present for any choice of parameters due to the parametrization in Eq. (4), the extent of the region in the phase diagram where its magnitude is large (either positive or negative) is a nonuniversal property of the theory—the “size of the critical region”—which cannot be inferred from universality arguments. It is nonetheless of crucial importance, as it can ultimately determine whether the critical behavior can be observed in experiments.

Here we describe how the parameters of the mapping control the size of the critical region. We define the critical region as the region where the leading singular part of the equation of state dominates over the regular part. This comparison cannot be done on the pressure itself, since the critical contribution to the pressure vanishes at the critical point (as $r^{2-\alpha}$). A reasonable measure of the critical region should be based on a quantity which *diverges* at the critical point, such as the baryon susceptibility, $\chi_2^B = P_{\mu\mu}$ or, in our case, $\chi_4^B = P_{\mu\mu\mu\mu}$ [where $P_\mu = \partial(p/T^4)/\partial(\mu_B/T)$ at fixed T]. We shall estimate the size of the critical region along the crossover, $h = 0$, line. The singular part of χ_4^B at $h = 0$ is given by

$$\chi_4^{\text{sing}} \sim AG_{\mu\mu\mu\mu}(r, 0) \sim AG_{hhhh}(r, 0)h_\mu^4 \quad (10)$$

$$\begin{aligned} &\sim Ar^{\beta(1-3\delta)} \left(\frac{s_1}{wT_C s_{12}} \right)^4 \\ &\sim A \left(\frac{\Delta\mu_B}{\rho w T_C c_1} \right)^{\beta(1-3\delta)} \left(\frac{s_1}{wT_C s_{12}} \right)^4. \end{aligned} \quad (11)$$

where $P_{\text{crit}}^{\text{QCD}}(T, \mu_B) = AG(r, h)$, $G_\mu = \partial G/\partial(\mu_B/T)$, $s_i = \sin \alpha_i$, $c_i = \cos \alpha_i$, and $s_{12} = \sin(\alpha_1 - \alpha_2)$; A is an overall constant and $h_\mu = \partial h/\partial\mu_B$ at fixed T . Comparing this to the regular contribution of order $\chi_4^{\text{reg}} \approx 1$, we find for the extent of the critical region in the μ_B direction

$$\Delta\mu_B \sim T_C \rho w c_1 \left(\frac{A^{1/4}}{T_C} \frac{s_1}{w s_{12}} \right)^{\frac{4}{\beta(3\delta-1)}}. \quad (12)$$

Therefore, while increasing ρ increases the size of the critical region, the effect of increasing the parameter w is very

weak. For the mean-field value of $\beta = 1/2$ and $\delta = 3$, the w dependence is completely absent, while for the values $\beta = 1/3$, $\delta = 5$ approximating the exact values of 3D Ising model exponents one finds a very weak dependence $\Delta\mu_B \sim w^{1/7}$.

To determine the extent in the vertical, i.e., $\mu_B = \text{const} = \mu_{BC}$ direction, we note that this corresponds to a finite ratio $h/r = -\rho c_1/c_2$. Thus, the scaling variable $r/h^{1/(\beta\delta)} \rightarrow 0$ as we approach the critical point, and we can set $r = 0$ when determining the magnitude of χ_4 :

$$\chi_4^{\text{sing}} \sim AG_{\mu\mu\mu\mu}(0, h) \sim AG_{hhhh}(0, h)h_\mu^4 \quad (13)$$

$$\begin{aligned} &\sim Ah^{(1-3\delta)/\delta} \left(\frac{s_1}{wT_C s_{12}} \right)^4 \\ &= A \left(\frac{c_1 \Delta T}{wT_C s_{12}} \right)^{(1-3\delta)/\delta} \left(\frac{s_1}{wT_C s_{12}} \right)^4. \end{aligned} \quad (14)$$

The condition $\chi_4^{\text{sing}} \approx 1$ then gives

$$\Delta T \sim T_C \left(\frac{A}{T_C^4} \right)^{\frac{\delta}{3\delta-1}} \frac{s_1}{c_1} \left(\frac{s_1}{w s_{12}} \right)^{\frac{\delta+1}{3\delta-1}}. \quad (15)$$

The dependence on w is given by $\Delta T \sim w^{-\frac{\delta+1}{3\delta-1}}$. For the mean-field value of δ this corresponds to $w^{-1/2}$ and for $\delta = 5$ to $w^{-3/7}$.

IV. RESULTS AND DISCUSSION

We now employ the procedure described in Sec. II to calculate the susceptibilities of the baryon number. We summarize our parameter choices in Table I. We fix the location of the critical point sufficiently far from the $\mu_B = 0$ axis to allow for maximum freedom in our parameter choice but still within the range of the Taylor expansion of $\mathcal{O}(\mu_B^4)$. To satisfy those criteria we use $\mu_{BC} = 420$ MeV, which results in $T_C \simeq 138$ MeV and $\alpha_1 \simeq 4.6^\circ$, and study several values of the parameters (w, ρ). In addition, we consider two different choices for the relative angle between the (r, h) axes. First, we keep the two axes orthogonal ($\alpha_2 - \alpha_1 = 90^\circ$), as this has been a common “default” choice in the literature. Then we examine the case with the angle between the two axes $\alpha_2 - \alpha_1 = -3^\circ$. This second choice is motivated by the fact that, in the chiral limit, the angle difference vanishes (as quark mass to power 2/5) and $0 < \alpha_2 < \alpha_1$ for sufficiently small quark mass,³ according to Ref. [30]. Note that, according to Eqs. (12) and (15), a small value for s_{12} yields a larger critical region size for the same w and ρ : $\Delta\mu_B \sim s_{12}^{-6/7}$ and $\Delta T \sim s_{12}^{-3/7}$.

We now investigate the behavior of the critical contribution to χ_4^B over the QCD phase diagram, with focus on the region close to the critical point $T = 130$ –160 MeV and $\mu_B = 250$ –450 MeV.⁴

³This can be seen explicitly in the random matrix model of the QCD phase diagram [21,30].

⁴We point out that, with the current linear mapping between the Ising model and QCD phase diagrams, this second parameter choice would give rise to a pathological equation of state with negative baryon density. However, this is not relevant for the results presented

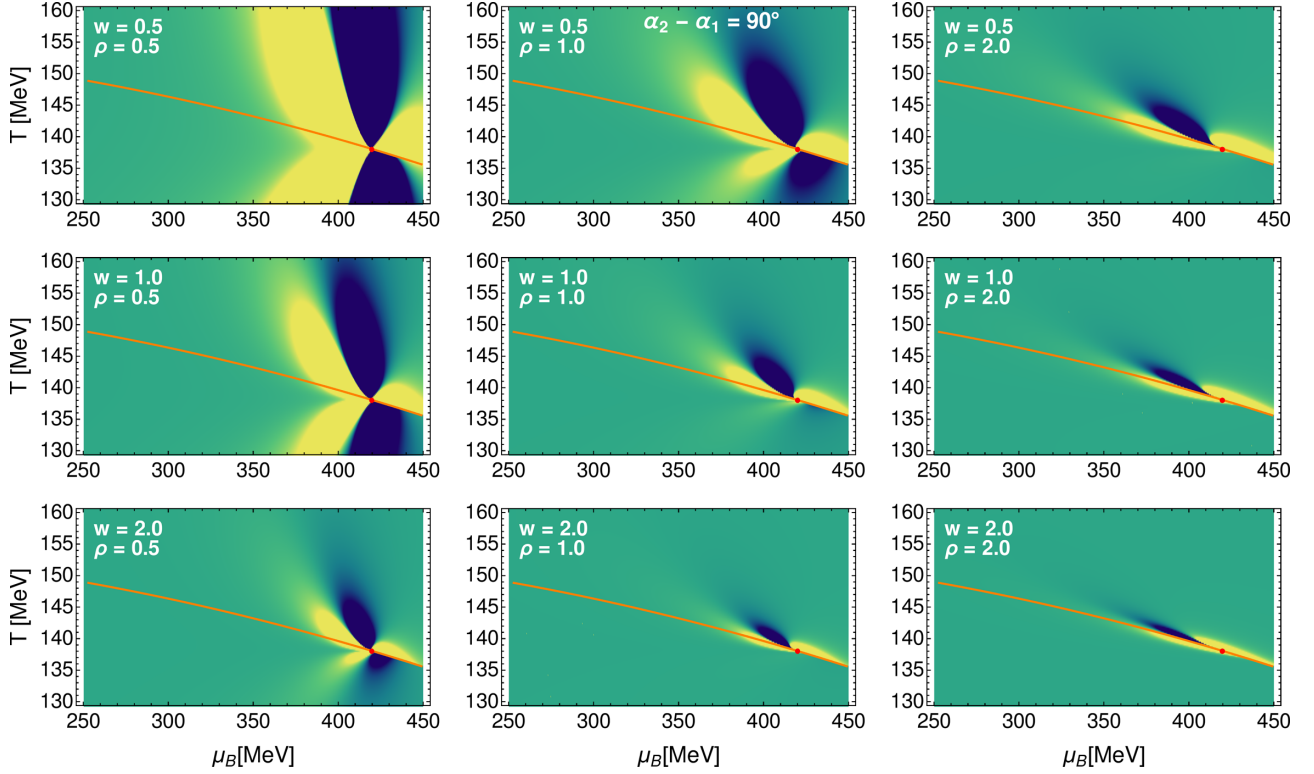


FIG. 1. Density plots of the critical contribution to $\chi_4^B(T, \mu_B)$ in the (T, μ_B) plane with a critical point located at $(T_C \simeq 138 \text{ MeV}, \mu_{BC} = 420 \text{ MeV})$, and with $\alpha_2 - \alpha_1 = 90^\circ$, for (top to bottom) $w = 0.5, 1, 2$ and (left to right) $\rho = 0.5, 1, 2$. The critical point is indicated by a red dot, while the chiral/deconfinement transition line is represented by the solid orange line. The yellow and green areas correspond to positive values (the regions where it is the largest are indicated in yellow) of χ_4^B , while the blue ones correspond to negative values (darker blue in the regions where it is largest in magnitude).

In Figs. 1 and 2, density plots of the critical contribution to $\chi_4^B(T, \mu_B)$ in the (T, μ_B) plane are shown for $w = 0.5, 1, 2$ and $\rho = 0.5, 1, 2$ in the case of $\alpha_2 - \alpha_1 = 90^\circ$ and $w = 0.5, 1, 2$ and $\rho = 0.125, 0.25, 0.5$ in the case of $\alpha_2 - \alpha_1 = -3^\circ$, respectively. The yellow and green areas correspond to positive values (the regions where it is the largest are indicated in yellow) of χ_4^B , while the blue ones correspond to negative values (darker blue in the regions where it is largest in magnitude). The orange curve shows the QCD transition line from Eq. (7). The red dot marks the critical point.

We note that the color function is not the same for Figs. 1 and 2. The color schemes are such that a factor 10 in the value of χ_4^B separates the two figures, for the same color. This is because, due to the dependence of χ_4^B on s_{12} , this quantity is overall significantly larger in all the plots of Fig. 2 than in those of Fig. 1.

We would like to point out the following relevant features in Figs. 1 and 2:

- (i) A smaller value of w leads to a larger critical region in the T direction, for both values of the relative angle $\alpha_2 - \alpha_1$. This follows from Eq. (15).
- (ii) The main effect of ρ is to stretch the critical region in the μ_B direction. Indeed, the size of the critical region along μ_B increases linearly with ρ , while the one in the T direction is not affected by ρ according to Eqs. (12) and (15).
- (iii) It is most interesting to compare our findings to what was originally anticipated in Ref. [9] based on the leading singular contribution. While the pattern in Fig. 2 is in agreement with the leading singularity prediction, in Fig. 1 that prediction only holds extremely close to the critical point.

Away from the critical point the subleading singular terms modify the pattern. In Fig. 1 for $\rho = 2.0$ and in Fig. 2 the main effect is the bending of the negative lobe away from the crossover line. The downward bending in Fig. 2 is a consequence of $0 < \alpha_2 < \alpha_1$, while the upward bending in Fig. 1 is a consequence of $\alpha_1 < \alpha_2 < 180^\circ$, as explained in Ref. [30].

As a result, in Fig. 1, the critical contribution to the *dip* to the left of the critical point is absent, except in the extremely close vicinity of the critical point. Instead, the approach to the critical point from the left is characterized by a peak instead of a dip. Furthermore,

here, since we only consider the critical contribution to the equation of state, and not the full one. It would be interesting to explore whether a different, nonlinear mapping could lead to a nonpathological equation of state with this parameter choice, which is one of the very few which leads to a dip in χ_4^B . We leave this investigation for future work.

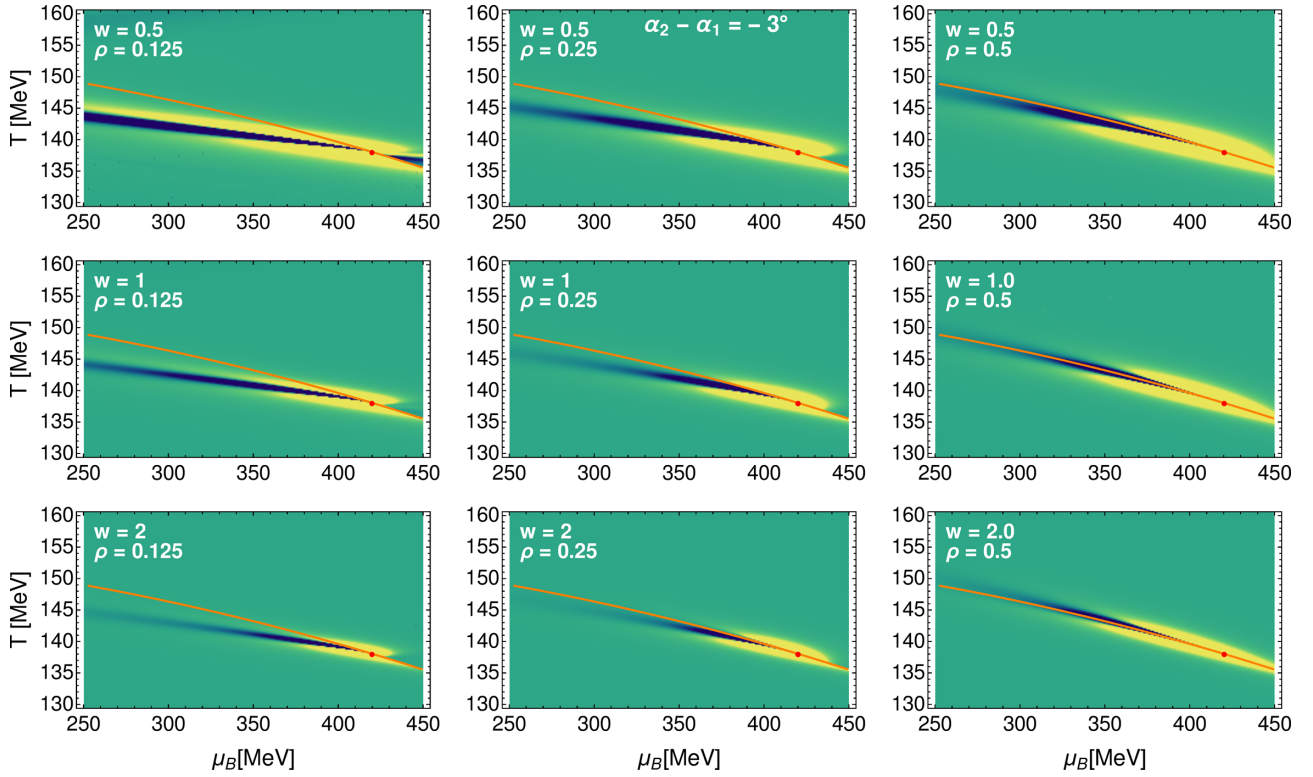


FIG. 2. Density plots of the critical contribution to $\chi_4^B(T, \mu_B)$ in the (T, μ_B) plane with a critical point located at $(T_C \simeq 138 \text{ MeV}, \mu_{BC} = 420 \text{ MeV})$, and with $\alpha_2 - \alpha_1 = -3^\circ$, for (top to bottom) $w = 0.5, 1, 2$ and (left to right) $\rho = 0.125, 0.25, 0.5$. The critical point is indicated by a red dot, while the chiral/deconfinement transition line is represented by the solid orange line. The yellow and green areas correspond to positive values (the regions where it is the largest are indicated in yellow) of χ_4^B , while the blue ones correspond to negative values (darker blue in the regions where it is largest in magnitude).

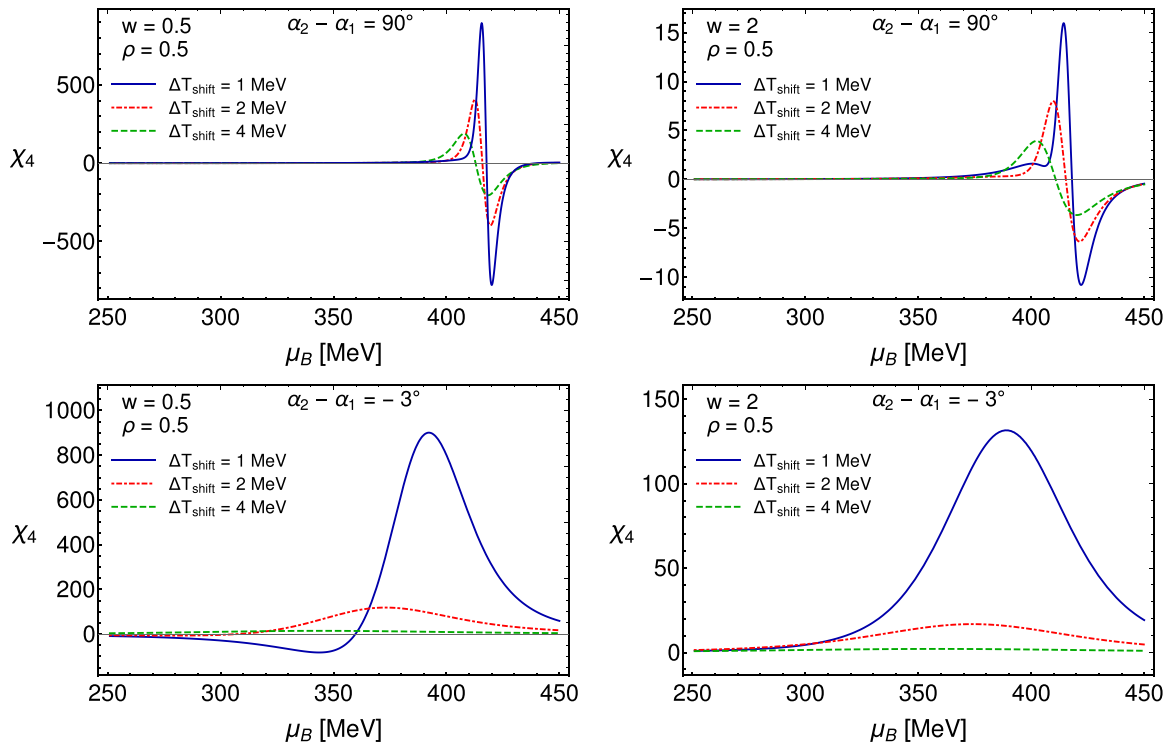


FIG. 3. Profile of the critical contribution to χ_4^B along lines parallel to the chiral transition line, and separated by $\Delta T_{\text{shift}} = 1, 2, 4 \text{ MeV}$. The top and bottom rows correspond to $\alpha_2 - \alpha_1 = 90^\circ$ and $\alpha_2 - \alpha_1 = -3^\circ$, respectively.

for smaller ρ values, an additional negative lobe appears below the critical point for *larger* μ_B .

To understand the effect of the choice of α_2 on the significance of the subleading singular contributions to χ_4^B we observe, let us examine the Ising-to-QCD mapping more closely. Equations (5) and (6) allow us to convert the derivatives with respect to μ_B in the definition of χ_4^B in Eq. (1) into derivatives with respect to Ising variables h and r :

$$\partial_{\mu_B} = \frac{1}{w \rho T_{CS12}} (s_1 \partial_h + s_2 \partial_r). \quad (16)$$

Since h corresponds to the most relevant perturbation at the critical point (h has the largest scaling dimension), the dominant contribution to the derivative ∂_{μ_B} sufficiently close to the critical point comes from ∂_h . Since α_1 is small, when α_2 is *not* small, the contribution of ∂_h is suppressed by s_1/s_2 compared to ∂_r . This is precisely the case in Fig. 1. While taking only the most divergent terms corresponds to setting $\partial_{\mu_B} \sim \partial_h$, and hence $\chi_4^B \sim \chi_4^{\text{Ising}}$ from Eq. (2), the full expression for χ_4^B contains many additional subleading, less singular terms which involve ∂_r . The subleading terms will become negligible sufficiently close to the critical point, but if the leading contribution is strongly suppressed this may not happen until we are extremely close to the critical point, as seen in Fig. 1. Thus, the pattern of the $T\mu_B$ dependence of χ_B around the critical point is significantly affected by the subleading terms in this scenario.

On the other hand, when α_2 is small, as for our choice $\alpha_2 \approx 1.6^\circ$, the pattern is indeed more similar to the one described in Ref. [9]. This can be seen in Fig. 2, especially when $\rho = 0.5$.

After analyzing the general behavior of χ_4^B over the QCD phase diagram, we now wish to determine the impact that its features can have on experimental measurements. We shall make a simplifying assumption that net-proton kurtosis has a similar critical behavior to χ_4^B , following the argument of Ref. [12]. In the following we study the behavior of χ_4^B along exemplary freeze-out trajectories, which are roughly parallel to the chiral/deconfinement transition line from Eq. (7):

$$T_F(\mu_B) = T_0 + \kappa_2 T_0 \left(\frac{\mu_B}{T_0} \right)^2 - \Delta T_{\text{shift}}, \quad (17)$$

where ΔT_{shift} indicates the shift in temperature downward from the transition line. In Fig. 3 we show the behavior of the critical contribution to χ_4^B along such lines, with shifts $\Delta T_{\text{shift}} = 1, 2, 4$ MeV. In the different panels, we consider the cases with $\alpha_2 - \alpha_1 = 90^\circ$ (top row) and $\alpha_2 - \alpha_1 = -3^\circ$ (bottom row), and with the parameter choices $w = \rho = 0.5$ (left column) and $w = 2, \rho = 0.5$ (right column).

The choice that displays a dip for $\mu_B < \mu_{BC}$ is the one with $w = \rho = 0.5$, $\alpha_2 - \alpha_1 = -3^\circ$ and only in the close vicinity of the transition line, i.e., for $\Delta T_{\text{shift}} = 1, 2$ MeV. Figure 2 suggests that this would be the case also for smaller values of ρ , as we note that the lower the value of ρ , the more apparent the downward bending is of the negative (blue) lobe. Since this behavior follows from our choice for the angle α_2 , we consider in the top panel of Fig. 4 different choices for the angle α_2 . We focus on lines parallel to the transition line, with $\Delta T_{\text{shift}} = 1$ MeV, and keep $w = \rho = 0.5$ in all cases.

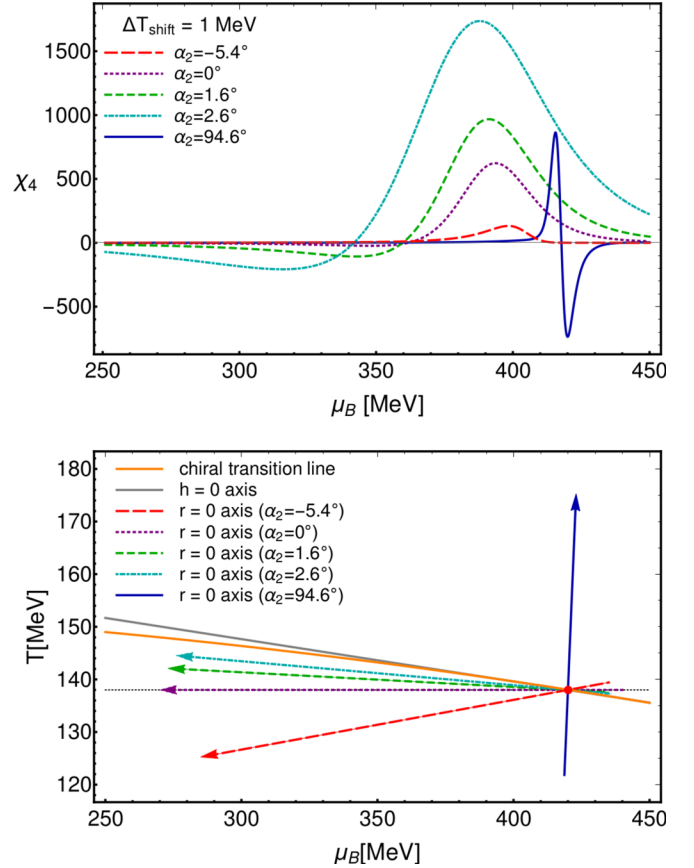


FIG. 4. Top panel: Profile of the critical contribution to χ_4^B along lines parallel to the chiral transition line, and separated by $\Delta T_{\text{shift}} = 1$ MeV. The different lines correspond to different choices for $\alpha_2 = -5.4^\circ, 0^\circ, 1.6^\circ, 2.6^\circ, 94.6^\circ$. For all these curves we fixed $w = \rho = 0.5$. Bottom panel: The chiral transition line (orange) is shown together with the $h = 0$ axis (gray) and the $r = 0$ axis corresponding to the choices shown in the top panel. The color coding is kept the same.

We consider a handful of choices for the angle α_2 . We include the ones corresponding to Fig. 1 ($\alpha_2 \simeq 94.6^\circ$) and Fig. 2 ($\alpha_2 \simeq 1.6^\circ$), as well as $\alpha_2 \simeq -5.4^\circ, 0^\circ, 2.6^\circ$. In the bottom panel of Fig. 4 we show the orientations of the $r = 0$ axis corresponding to the different values of α_2 we used. As anticipated, only in the cases satisfying $0 < \alpha_2 < \alpha_1$ a dip for $\mu_B < \mu_{BC}$ is seen. Moreover, we consider in this plot a shift $\Delta T_{\text{shift}} = 1$ MeV between the chemical freeze-out line and the chiral transition line. With larger separation, a dip would be harder to observe, as shown in Fig. 3.

V. EXPERIMENTAL CONSIDERATIONS

In our current study we focused on the *equilibrium* properties of the QCD equation of state that can lead to the potential discovery of the QCD critical point. However, because heavy-ion collisions are inherently dynamical systems, direct comparison with experimental data would require an event-by-event relativistic viscous hydrodynamics model with BSQ conserved charges [40,41] and critical fluctuations coupled to a hadronic transport code.

While important efforts are being made along these lines in terms of new hydrodynamical models [42–48], transport coefficients [49–55], critical fluctuations [7,56–59], and freeze-out [60–65], the full dynamical description does not yet exist at this time. In the meantime, a number of attempts have been made to quantify effects such as critical slowing down and memory, finite volume/lifetime, number of particles, decays, charge conservation, kinematic cuts, low statistics, etc. [28,66–77]. Yet further studies have looked into the influence of far-from-equilibrium initial conditions and potential attractors at the critical point [48] and the influence of viscous effects across a first-order phase transition line [78].

Another remaining question that is very relevant to this study is the temperature difference between hadronization and freeze-out. Earlier attempts were made in dynamic models to quantify either the time scale or temperature range in the difference between hadronization and freeze-out [79–88]. Generally, this depends on the number of hadrons in the system [89] and their corresponding interactions [90–93]. However, given enough particles that appear near the phase transition that are strongly interacting, it is possible to reach chemical equilibrium on very short timescales [94–98].

VI. CONCLUSIONS

In this work we have studied the fourth-order susceptibility, χ_4^B , of the baryon number in QCD in the presence of a critical point in the 3D Ising model universality class. We found that some features of the T and μ_B dependence of χ_4^B could be significantly affected by sub-leading, less singular terms in the critical behavior. In all cases that we studied, we found a diverging peak at the critical point. However, only in the special case of $0 < \alpha_2 < \alpha_1$ (which also implies a wide critical region that is extended along the chiral phase transition) do we obtain a dip as one approaches the critical point along an exemplary freeze-out curve *below* the transition temperature. In this case,

at temperatures significantly lower than the transition the dip moves to smaller μ_B and fades away.

One of the main conclusions which can be drawn from this study is that the peak in net-proton kurtosis is a more robust signature of the critical point than the dip. In principle, the observation of a dip could help determine or constrain the value of the parameter α_2 as well as the deviation ΔT_{shift} of the freeze-out temperature from the crossover line (e.g., by $0 < \alpha_2 < \alpha_1$, $\Delta T_{\text{shift}} < \text{few MeV}$). Strictly speaking, this would be possible only provided that other potential experimental contributions to the dip (the baseline) are under control.

It is important to emphasize that this study only considers the equilibrium equation of state and it would be interesting and important to explore these issues further in *dynamical* models. For example, as has been observed in Refs. [60,66,68], critical slowing down, charge conservation, and memory effects may help to preserve the signatures of critical fluctuations down to lower temperatures below the critical region.

ACKNOWLEDGMENTS

This material is based upon work supported by the National Science Foundation under Grant No. PHY-1654219 and by the U.S. Department of Energy, Office of Science, Office of Nuclear Physics, within the framework of the Beam Energy Scan Topical (BEST) Collaboration and Grants No. DE-SC0020633 and No. DE-FG02-01ER41195. We also acknowledge the support from the Center of Advanced Computing and Data Systems at the University of Houston. J.N.-H. acknowledges support from the Alfred P Sloan Foundation. P.P. acknowledges support by the DFG Grant No. SFB/TR55. D.M. was supported by the National Science Foundation Graduate Research Fellowship Program under Grant No. DGE - 1746047.

-
- [1] A. Bzdak, S. Esumi, V. Koch, J. Liao, M. Stephanov, and N. Xu, *Phys. Rep.* **853**, 1 (2020).
 - [2] E. R. Most, L. J. Papenfort, V. Dexheimer, M. Hanauske, S. Schramm, H. Stöcker, and L. Rezzolla, *Phys. Rev. Lett.* **122**, 061101 (2019).
 - [3] J. Adamczewski-Musch *et al.* (HADES Collaboration), *Phys. Rev. C* **102**, 024914 (2020).
 - [4] M. Troyer and U.-J. Wiese, *Phys. Rev. Lett.* **94**, 170201 (2005).
 - [5] J. Adam *et al.* (STAR Collaboration), [arXiv:2001.02852](https://arxiv.org/abs/2001.02852).
 - [6] M. A. Stephanov, K. Rajagopal, and E. V. Shuryak, *Phys. Rev. Lett.* **81**, 4816 (1998).
 - [7] M. A. Stephanov, K. Rajagopal, and E. V. Shuryak, *Phys. Rev. D* **60**, 114028 (1999).
 - [8] M. A. Stephanov, *Phys. Rev. Lett.* **102**, 032301 (2009).
 - [9] M. A. Stephanov, *Phys. Rev. Lett.* **107**, 052301 (2011).
 - [10] C. Ratti, *Rept. Prog. Phys.* **81**, 084301 (2018).
 - [11] Y. Hatta and T. Ikeda, *Phys. Rev. D* **67**, 014028 (2003).
 - [12] Y. Hatta and M. A. Stephanov, *Phys. Rev. Lett.* **91**, 102003 (2003); **91**, 129901(E) (2003).
 - [13] C. Athanasiou, K. Rajagopal, and M. Stephanov, *Phys. Rev. D* **82**, 074008 (2010).
 - [14] M. M. Aggarwal *et al.* (STAR Collaboration), *Phys. Rev. Lett.* **105**, 022302 (2010).
 - [15] T. Nonaka (STAR Collaboration), *Nucl. Phys. A* **1005**, 121882 (2021).
 - [16] S. Borsanyi, Z. Fodor, J. N. Guenther, S. K. Katz, K. K. Szabo, A. Pasztor, I. Portillo, and C. Ratti, *J. High Energy Phys.* **10** (2018) 205.
 - [17] A. Bazavov *et al.* (HotQCD Collaboration), *Phys. Rev. D* **96**, 074510 (2017).
 - [18] R. Critelli, J. Noronha, J. Noronha-Hostler, I. Portillo, C. Ratti, and R. Rougemont, *Phys. Rev. D* **96**, 096026 (2017).
 - [19] K. Rajagopal and F. Wilczek, *Nucl. Phys. B* **399**, 395 (1993).
 - [20] J. Berges and K. Rajagopal, *Nucl. Phys. B* **538**, 215 (1999).
 - [21] M. A. Halasz, A. D. Jackson, R. E. Shrock, M. A. Stephanov, and J. J. M. Verbaarschot, *Phys. Rev. D* **58**, 096007 (1998).
 - [22] F. Karsch, E. Laermann, and C. Schmidt, *Phys. Lett. B* **520**, 41 (2001).
 - [23] P. de Forcrand and O. Philipsen, *Nucl. Phys. B* **673**, 170 (2003).
 - [24] M. Caselle and M. Sorba, *Phys. Rev. D* **102**, 014505 (2020).
 - [25] Studying the Phase Diagram of QCD Matter at RHIC, BNL STAR report (unpublished), https://drupal.star.bnl.gov/STAR/files/BES_WPII_ver6.9_Cover.pdf.

- [26] D. Cebra, S. Brovko, C. Flores, B. Haag, and J. Klay, [arXiv:1408.1369](#).
- [27] P. Braun-Munzinger, A. Rustamov, and J. Stachel, *Nucl. Phys. A* **960**, 114 (2017).
- [28] P. Braun-Munzinger, B. Friman, K. Redlich, A. Rustamov, and J. Stachel, *Nucl. Phys. A* **1008**, 122141 (2021).
- [29] N. R. Sahoo, S. De, and T. K. Nayak, *Phys. Rev. C* **87**, 044906 (2013).
- [30] M. S. Pradeep and M. Stephanov, *Phys. Rev. D* **100**, 056003 (2019).
- [31] P. Parotto, M. Bluhm, D. Mroczek, M. Nahrgang, J. Noronha-Hostler, K. Rajagopal, C. Ratti, T. Schäfer, and M. Stephanov, *Phys. Rev. C* **101**, 034901 (2020).
- [32] C. Nonaka and M. Asakawa, *Phys. Rev. C* **71**, 044904 (2005).
- [33] R. Guida and J. Zinn-Justin, *Nucl. Phys. B* **489**, 626 (1997).
- [34] P. Schofield, J. D. Litster, and J. T. Ho, *Phys. Rev. Lett.* **23**, 1098 (1969).
- [35] M. Bluhm and B. Kampfer, in *Critical Point and Onset of Deconfinement. Proceedings, 3rd Conference, CPOD2006, Florence, Italy, July 3–6, 2006* [PoS **CPOD2006**, 004 (2006)].
- [36] J. J. Rehr and N. D. Mermin, *Phys. Rev. A* **8**, 472 (1973).
- [37] R. Bellwied, S. Borsanyi, Z. Fodor, J. Guenther, S. D. Katz, C. Ratti, and K. K. Szabo, *Phys. Lett. B* **751**, 559 (2015).
- [38] A. Bazavov *et al.* (HotQCD Collaboration), *Phys. Lett. B* **795**, 15 (2019).
- [39] S. Borsanyi, Z. Fodor, J. N. Guenther, R. Kara, S. D. Katz, P. Parotto, A. Pasztor, C. Ratti, and K. K. Szabó, *Phys. Rev. Lett.* **125**, 052001 (2020).
- [40] J. Noronha-Hostler, P. Parotto, C. Ratti, and J. M. Stafford, *Phys. Rev. C* **100**, 064910 (2019).
- [41] A. Monnai, B. Schenke, and C. Shen, *Phys. Rev. C* **100**, 024907 (2019).
- [42] I. Karpenko, P. Huovinen, and M. Bleicher, *Comput. Phys. Commun.* **185**, 3016 (2014).
- [43] I. Karpenko, M. Bleicher, P. Huovinen, and H. Petersen, *J. Phys. Conf. Ser.* **503**, 012040 (2014).
- [44] L. Du and U. Heinz, *Comput. Phys. Commun.* **251**, 107090 (2020).
- [45] G. S. Denicol, C. Gale, S. Jeon, A. Monnai, B. Schenke, and C. Shen, *Phys. Rev. C* **98**, 034916 (2018).
- [46] P. Batyuk, D. Blaschke, M. Bleicher, Y. B. Ivanov, I. Karpenko, L. Malinina, S. Merts, M. Nahrgang, H. Petersen, and O. Rogachevsky, *EPJ Web Conf.* **182**, 02056 (2018).
- [47] J. A. Fotakis, M. Greif, C. Greiner, G. S. Denicol, and H. Niemi, *Phys. Rev. D* **101**, 076007 (2020).
- [48] T. Dore, J. Noronha-Hostler, and E. McLaughlin, *Phys. Rev. D* **102**, 074017 (2020).
- [49] N. Demir and S. A. Bass, *Phys. Rev. Lett.* **102**, 172302 (2009).
- [50] G. S. Denicol, C. Gale, S. Jeon, and J. Noronha, *Phys. Rev. C* **88**, 064901 (2013).
- [51] G. P. Kadam and H. Mishra, *Nucl. Phys. A* **934**, 133 (2014).
- [52] A. Monnai, S. Mukherjee, and Y. Yin, *Phys. Rev. C* **95**, 034902 (2017).
- [53] R. Rougemont, R. Critelli, J. Noronha-Hostler, J. Noronha, and C. Ratti, *Phys. Rev. D* **96**, 014032 (2017).
- [54] J. Auvinen, J. E. Bernhard, S. A. Bass, and I. Karpenko, *Phys. Rev. C* **97**, 044905 (2018).
- [55] M. Martinez, T. Schäfer, and V. Skokov, *Phys. Rev. D* **100**, 074017 (2019).
- [56] L. Jiang, P. Li, and H. Song, *Phys. Rev. C* **94**, 024918 (2016).
- [57] M. Stephanov and Y. Yin, *Phys. Rev. D* **98**, 036006 (2018).
- [58] M. Nahrgang, M. Bluhm, T. Schäfer, and S. A. Bass, *Phys. Rev. D* **99**, 116015 (2019).
- [59] X. An, G. Basar, M. Stephanov, and H.-U. Yee, *Phys. Rev. C* **100**, 024910 (2019).
- [60] M. A. Stephanov, *Phys. Rev. D* **81**, 054012 (2010).
- [61] B. Feng, Z. Xu, and C. Greiner, *Phys. Rev. C* **95**, 024907 (2017).
- [62] J. Li, H.-j. Xu, and H. Song, *Phys. Rev. C* **97**, 014902 (2018).
- [63] J. Steinheimer, L. Pang, K. Zhou, V. Koch, J. Randrup, and H. Stoecker, *J. High Energy Phys.* **12** (2019) 122.
- [64] D. Oliinychenko and V. Koch, *Phys. Rev. Lett.* **123**, 182302 (2019).
- [65] D. Oliinychenko, S. Shi, and V. Koch, *Phys. Rev. C* **102**, 034904 (2020).
- [66] B. Berndnikov and K. Rajagopal, *Phys. Rev. D* **61**, 105017 (2000).
- [67] S. Mukherjee, R. Venugopalan, and Y. Yin, *Phys. Rev. C* **92**, 034912 (2015).
- [68] S. Mukherjee, R. Venugopalan, and Y. Yin, *Phys. Rev. Lett.* **117**, 222301 (2016).
- [69] Y. Akamatsu, D. Teaney, F. Yan, and Y. Yin, *Phys. Rev. C* **100**, 044901 (2019).
- [70] G. D. Westfall, *Phys. Rev. C* **92**, 024902 (2015).
- [71] J. Noronha-Hostler, R. Bellwied, J. Gunther, P. Parotto, A. Pasztor, I. Portillo Vazquez, and C. Ratti, [arXiv:1607.02527](#).
- [72] A. Bzdak and V. Koch, *Phys. Rev. C* **96**, 054905 (2017).
- [73] J. Steinheimer and V. Koch, *Phys. Rev. C* **96**, 034907 (2017).
- [74] A. Bzdak, V. Koch, and V. Skokov, *Eur. Phys. J. C* **77**, 288 (2017).
- [75] A. Bzdak and V. Koch, *Phys. Rev. C* **100**, 051902(R) (2019).
- [76] P. Braun-Munzinger, A. Rustamov, and J. Stachel, [arXiv:1907.03032](#).
- [77] R. V. Poberezhnyuk, O. Savchuk, M. I. Gorenstein, V. Vovchenko, K. Taradiy, V. V. Begun, L. Satarov, J. Steinheimer, and H. Stoecker, *Phys. Rev. C* **102**, 024908 (2020).
- [78] B. Feng, C. Greiner, S. Shi, and Z. Xu, *Phys. Lett. B* **782**, 262 (2018).
- [79] S. Wong, *Phys. Rev. C* **54**, 2588 (1996).
- [80] R. Rapp and E. V. Shuryak, *Phys. Rev. Lett.* **86**, 2980 (2001).
- [81] C. Greiner and S. Leupold, *J. Phys. G* **27**, L95 (2001).
- [82] C. Greiner, P. Koch-Steinheimer, F. Liu, I. Shovkovy, and H. Stoecker, *J. Phys. G* **31**, S725 (2005).
- [83] J. Noronha-Hostler, C. Greiner, and I. A. Shovkovy, *Phys. Rev. Lett.* **100**, 252301 (2008).
- [84] J. Noronha-Hostler, M. Beitel, C. Greiner, and I. Shovkovy, *Phys. Rev. C* **81**, 054909 (2010).
- [85] J. Noronha-Hostler and C. Greiner, *Nucl. Phys. A* **931**, 1108 (2014).
- [86] G. A. Almási and G. Wolf, *Nucl. Phys. A* **943**, 117 (2015).
- [87] M. Beitel, C. Greiner, and H. Stoecker, *Phys. Rev. C* **94**, 021902(R) (2016).
- [88] K. Gallmeister, M. Beitel, and C. Greiner, *Phys. Rev. C* **98**, 024915 (2018).
- [89] P. Alba, V. M. Sarti, J. Noronha-Hostler, P. Parotto, I. Portillo-Vazquez, C. Ratti, and J. M. Stafford, *Phys. Rev. C* **101**, 054905 (2020).
- [90] F. Becattini, M. Bleicher, T. Kollegger, T. Schuster, J. Steinheimer, and R. Stock, *Phys. Rev. Lett.* **111**, 082302 (2013).
- [91] P. Alba, V. Vovchenko, M. Gorenstein, and H. Stoecker, *Nucl. Phys. A* **974**, 22 (2018).

- [92] V. Vovchenko, A. Motornenko, P. Alba, M. I. Gorenstein, L. M. Satarov, and H. Stoecker, *Phys. Rev. C* **96**, 045202 (2017).
- [93] P. M. Lo, B. Friman, K. Redlich, and C. Sasaki, *Phys. Lett. B* **778**, 454 (2018).
- [94] S. Borsanyi, Z. Fodor, S. D. Katz, S. Krieg, C. Ratti, and K. K. Szabo, *Phys. Rev. Lett.* **111**, 062005 (2013).
- [95] R. Bellwied, S. Borsanyi, Z. Fodor, S. D. Katz, and C. Ratti, *Phys. Rev. Lett.* **111**, 202302 (2013).
- [96] S. Borsanyi, Z. Fodor, S. D. Katz, S. Krieg, C. Ratti, and K. K. Szabo, *Phys. Rev. Lett.* **113**, 052301 (2014).
- [97] P. Alba, W. Alberico, R. Bellwied, M. Bluhm, V. Mantovani Sarti, M. Nahrgang, and C. Ratti, *Phys. Lett. B* **738**, 305 (2014).
- [98] R. Bellwied, J. Noronha-Hostler, P. Parotto, I. Portillo Vazquez, C. Ratti, and J. M. Stafford, *Phys. Rev. C* **99**, 034912 (2019).