

Valley Edelstein effect in monolayer transition-metal dichalcogenides

K. Taguchi,^{1,*} B. T. Zhou,² Y. Kawaguchi,³ Y. Tanaka,³ and K. T. Law²

¹*Yukawa Institute for Theoretical Physics, Kyoto University, Kyoto 606-8502, Japan*

²*Department of Physics, Hong Kong University of Science and Technology, Clear Water Bay, Hong Kong, China*

³*Department of Applied Physics, Nagoya University, Nagoya, 464-8603, Japan*



(Received 31 May 2017; revised manuscript received 11 July 2018; published 30 July 2018)

We predict the emergence of the valley Edelstein effect (VEE), which is an electric-field-induced spin-polarization effect, in gated monolayer transition-metal dichalcogenides (MTMDs). We found an unconventional valley-dependent response in which the spin polarization is parallel to the applied electric field with opposite spin polarization generated by opposite valleys. This is in sharp contrast to the conventional Edelstein effect in which the induced spin polarization is perpendicular to the applied electric field. We identify the origin of VEE as combined effects of conventional Edelstein effect and valley-dependent Berry curvatures induced by coexisting Rashba and Ising spin-orbit couplings in gated MTMDs. Experimental schemes to detect the VEE are also considered.

DOI: [10.1103/PhysRevB.98.035435](https://doi.org/10.1103/PhysRevB.98.035435)

I. INTRODUCTION

Monolayer transition-metal dichalcogenides (MTMDs) have attracted much attention recently because of their peculiar electronic and optical properties [1]. Semiconducting MTMDs, MX_2 , are composed of transition-metal atoms ($M = \text{Mo}, \text{W}$) and group-VI dichalcogenide atoms ($X = \text{S}, \text{Se}, \text{Te}, \text{etc.}$) [2–5]. They are arranged in two-dimensional (2D) honeycomb lattice structures, and exhibit a direct band gap between the valence and conduction band edges near the $\pm K$ points [6–10]. Both the top valence and the bottom conduction band edges of MTMDs are spin split (~ 0.1 eV and ~ 10 meV, respectively) due to strong atomic spin-orbit coupling (SOC) of the d orbitals from transition-metal atoms and in-plane mirror symmetry breaking in the lattice structure [11–15]. In particular, the SOC here acts as a valley-dependent Zeeman field, called Ising SOC [16,17], which pins electron spins at opposite valleys to opposite out-of-plane directions. Such a valley-dependent band structure makes MTMDs potential candidates for valleytronics devices [18–20]. Several valley-dependent phenomena, such as valley-selective circularly dichroism [21] and intrinsic valley Hall effect [22], have been theoretically studied and experimentally reported. Besides, in gated MTMDs, superconductivity with nonzero Rashba SOC and Ising SOC have also been experimentally studied [16,23].

The relatively small Ising SOC in the conduction bands was ignored in previous studies [8–10,20]. In this paper, we show that the valley-dependent Ising SOC together with the Rashba SOC generate strong Berry curvatures in the conduction bands. This Berry curvature combining with the conventional Edelstein effect in gated MTMDs leads to a new type of valley-dependent phenomenon, which we call the valley Edelstein effect (VEE). In conventional Edelstein effects [24–29], the spin polarizations are generated by Rashba SOC under an applied electric field \mathbf{E} [30–33], and the induced spin polarizations are perpendicular to \mathbf{E} . In the VEE, however,

the induced spin polarization has an extra parallel component with respect to \mathbf{E} , with the polarizations generated by electrons from opposite valleys pointing to opposite directions.

Remarkably, the unconventional parallel spin density calculated from Keldysh-Green's function method is proportional to the Berry curvature induced by the coexisting Rashba and Ising SOC in gated MTMDs [16,34]. Physically, the Berry curvature drives electrons to drift in transverse directions under the applied electric field \mathbf{E} , and by combining with the conventional Edelstein effect spin components parallel to \mathbf{E} can emerge [Fig. 1(a)].

Importantly, the Berry curvature in VEEs results from a massive-Dirac-type Hamiltonian in spin basis [Eq. (2)]. The Ising SOC plays the role of a Dirac mass term and has opposite signs at opposite valleys. This is very different from the intrinsic Berry curvature in pristine MTMDs studied previously [20], in which valley-dependent Berry curvatures arise from orbital degrees of freedom.

To be specific, the spin density induced in response to \mathbf{E} is given by

$$\langle \mathbf{s}_v^{\text{VEE}} \rangle = ev_e [C_{\perp} (\hat{\mathbf{z}} \times \mathbf{E}) + vC_{\parallel} \mathbf{E}], \quad (1)$$

where $v = \pm$ is the valley index, $e < 0$ is the electron charge, $v_e = m/(2\pi\hbar^2)$ is the 2D density of states, m is the effective electron mass, $\hat{\mathbf{z}}$ is the unit vector normal to the 2D plane, and C_{\perp} and C_{\parallel} are the response coefficients for perpendicular and parallel spin components, respectively. The key finding of VEEs in this work is manifested in the nonzero value of C_{\parallel} in the second term of Eq. (1), which arises when both Rashba and Ising SOC are present.

This paper is organized as follows. In Sec. II, we present the model Hamiltonian for gated MTMDs [shown schematically in Fig. 1(b)], which incorporates both impurity scattering effects and coupling to external electric fields. Next, in Sec. III, we use Keldysh Green's function method to calculate the induced spin density within a linear response theory and show explicitly the emergence of the unconventional C_{\parallel} . Remarkably, we demonstrate that C_{\parallel} is directly related to Berry curvatures

*Corresponding author: katsuhisa.taguchi@yukawa.kyoto-u.ac.jp

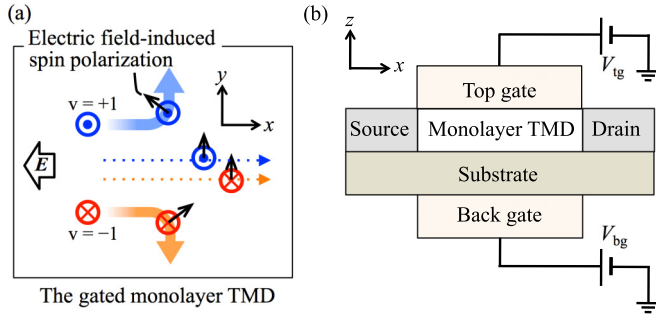


FIG. 1. Schematic of the VEE. The blue and orange arrows represent the motion of electrons in the $v = +$ and $-$ valleys, respectively, induced by an electric field \mathbf{E} applied in the $-x$ direction. The thick solid (thin dotted) arrows correspond to the trajectories in the presence (absence) of the Ising SOC. Due to valley-dependent Berry curvatures [Eq. (12)] induced by Rashba and Ising SOC, the trajectory of electrons from $v = +$ ($-$) valley bends into the $+y$ ($-y$) direction. The spin polarization (black arrows) arises in the perpendicular direction to the electron motion via the spin-momentum locking due to the Rashba SOC. As a result, valley-dependent spin polarization is induced along \mathbf{E} (VEE) in addition to the net spin polarization perpendicular to \mathbf{E} (conventional Edelstein effect). (b) Schematic dual-gate setup with tunable chemical potential and Rashba SOC. Top (back) gate voltage is indicated by V_{tg} (V_{bg}). The chemical potential is tuned by the average of V_{tg} and V_{bg} , while the Rashba SOC can be induced by the difference between V_{tg} and V_{bg} .

induced by Rashba and Ising SOC. In Sec. IV, we discuss experimental realization of VEE in gated MTMDs and explain how it can be detected by longitudinal magneto-optic Kerr effects [35]. Section V is devoted to conclusion.

II. MODEL

We consider a MTMD, such as MoS_2 and WS_2 , and assume that the Fermi level crosses the spin-split conduction bands around the $\pm K$ points [4,6], as shown in Fig. 2. Such situation can be achieved by electrogating [36,37]. The effective Hamiltonian $\mathcal{H}_{0,v}$ for electrons in the vK valley is given by [4,11]

$$\mathcal{H}_{0,v} = \sum_{\mathbf{k}} \psi_{\mathbf{v}}^{\dagger} [\varepsilon_{\mathbf{k}} \sigma^0 + v\beta_1 \sigma^z + \alpha_R (k_y \sigma^x - k_x \sigma^y)] \psi_{\mathbf{v}}, \quad (2)$$

where $\psi_{\mathbf{v}}^{\dagger} \equiv \psi_{\mathbf{v}}^{\dagger}(\mathbf{k}) = (\psi_{\uparrow,\mathbf{v}}^{\dagger}, \psi_{\downarrow,\mathbf{v}}^{\dagger})$ is the creation operator of an electron in the valley vK with \uparrow and \downarrow denoting the spin, $\mathbf{k} \equiv (k_x, k_y)$ is the electron momentum measured from the vK point, and σ^i ($i = x, y, z$) are the Pauli matrices. The first

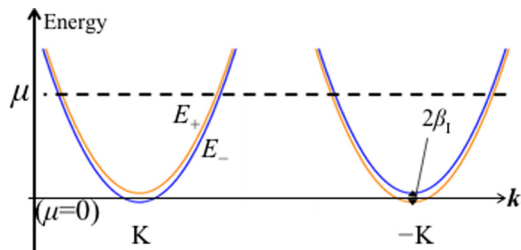


FIG. 2. Spin-split conduction bands of the MTMD with the Ising SOC and Rashba SOC around K point and $-K$ points for $\mu > \beta_1$.

term of Eq. (2) is the kinetic term with $\varepsilon_{\mathbf{k}} = \hbar^2 k^2 / (2m) - \mu$, where the chemical potential μ is measured from the averaged energy of the spin-split conduction bands at the vK point. The second term is the Ising SOC. The coupling strength β_1 is assumed to be a constant [16,38] since the spin splitting is independent of \mathbf{k} up to the second order near the $\pm K$ points [11–15,20]. The third term of Eq. (2) is the Rashba SOC whose strength α_R can be controlled by the gate voltage. Without loss of generality, we choose both β_1 and α_R to be positive. Importantly, we note that in the presence of both Rashba and Ising SOC, the effective Hamiltonian in Eq. (2) has the form of a massive Dirac Hamiltonian (by ignoring the $\varepsilon_{\mathbf{k}}$ term which does not affect the Berry curvature). As we show in later sections, this massive-Dirac-type Hamiltonian leads to nontrivial valley-dependent Berry curvatures, which plays an essential role in the VEEs.

It is noted that the strength of the Rashba SOC is controlled by the out-of-plane gating electric field across the MTMD sample, while the Fermi level is controlled by the carrier density which does not necessarily have a strong dependence on the gating electric field. For example, almost independent control of carrier density and gating field using dual-gate setup (as depicted in Fig. 1) has already been achieved in graphene systems [39,40]. Alternatively, with a single top/bottom gate, the carrier density can also be tuned by intercalation of dopants such as alkali atoms [36]. Therefore, by coordinating doping concentrations and gating strengths, one can also effectively control gating field and Fermi level independently.

We further take into account an in-plane dc electric field \mathbf{E} as well as nonmagnetic impurities on the MTMD. Here, we assume that hybridization between the $\pm K$ valleys can be ignored, namely, the magnitude of the momentum shift due to \mathbf{E} is much smaller than $2|K|$. Then, the Hamiltonian for electrons in the $\pm K$ valleys are decoupled, each of which is given by

$$\mathcal{H}_v = \mathcal{H}_{0,v} + \mathcal{H}_{\text{em},v} + \mathcal{V}_{\text{imp},v}, \quad (3)$$

$$\mathcal{H}_{\text{em},v} = -e \sum_{\mathbf{k}} \psi_{\mathbf{v}}^{\dagger} \mathbf{v} \cdot \mathbf{A} \psi_{\mathbf{v}}, \quad (4)$$

$$\mathcal{V}_{\text{imp},v} = \int d\mathbf{x} u_i(\mathbf{x}) \psi_{\mathbf{v}}^{\dagger}(\mathbf{x}) \psi_{\mathbf{v}}(\mathbf{x}), \quad (5)$$

where $\mathbf{v} = -(\partial \mathcal{H}_v / \partial \mathbf{k}) / \hbar$ is the velocity operator, \mathbf{A} is the vector potential defined by $\mathbf{E} = -\partial_t \mathbf{A}$, and $u_i(\mathbf{x}) = \sum_{j=1}^{N_i} u_0 \delta(\mathbf{x} - \mathbf{R}_j)$ is the short-range impurity potential independent of the valley index. Here, N_i , u_0 , and \mathbf{R}_j are the number of impurities, a constant impurity potential, and the position of the j th impurity on the monolayer, respectively.

III. VALLEY EDELSTEIN EFFECT

We calculate the induced spin density using the Keldysh Green's functions within the linear response to \mathbf{E} . The contributions from the $\pm K$ valleys, $\langle s_{\pm}^{\text{VEE}} \rangle$, are independently calculated from \mathcal{H}_{\pm} . The calculated perpendicular (C_{\perp}) and parallel (C_{\parallel}) spin coefficients are shown in Fig. 3. Clearly, the unconventional C_{\parallel} term arises when both Rashba and Ising SOC are present. According to Eq. (1), the parallel spin polarization for electrons from opposite valleys points to

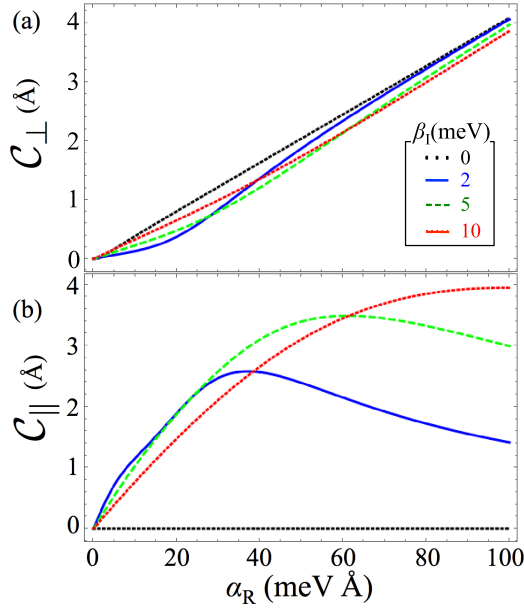


FIG. 3. (a) Conventional and (b) valley-dependent parts of the VEE as a function of the Rashba SOC (α_R) for various values of the Ising SOC (β_1) at bare self-energy $\Sigma_0 = 3$ meV and chemical potential $\mu = 100$ meV.

opposite directions. This is referred to as the valley Edelstein effect (VEE).

In our calculations, we assume that the self-energy Σ_v due to impurity scatterings satisfies $\Sigma_v \ll |\mu \pm \beta_1|$, which allows us to take into account disorder effects perturbatively [25]. For the parameters we choose below, this assumption is satisfied. Using the Keldysh techniques, the spin density in response to E is found to be [41]

$$\langle s_v^{\text{VEE},i} \rangle = -\frac{e\hbar}{4\pi} \sum_{k,\omega} \sum_{j=x,y} \frac{df_\omega}{d\omega} \text{tr}[\sigma^i G_{k,\omega,v}^r S_{k,\omega,v}^j G_{k,\omega,v}^a] E_j, \quad (6)$$

where $G_{k,\omega,v}^r = [\hbar\omega - \mathcal{H}_{0,v} + i\Sigma_v]^{-1}$ and $G_{k,\omega,v}^a = [G_{k,\omega,v}^r]^\dagger$ are the retarded and advanced Green's functions, respectively, f_ω is the Fermi distribution function, and $S_{k,\omega,v}^j$ is the velocity operator with the ladder vertex corrections. The self-energy Σ_v is calculated within the self-consistent Born approximation, resulting in

$$\Sigma_v = \Sigma'_{0,\omega} + v\Sigma_{z,\omega}\sigma^z, \quad (7)$$

where $\Sigma'_{0,\omega} = \Sigma_0 \equiv \pi n_c u_0^2 v_e$ and $\Sigma_{z,\omega} = 0$ for $\mu > \beta_1$ and $\Sigma'_{0,\omega} \equiv \Sigma_0(1 + u_R/\sqrt{\lambda_\omega})/2$ and $\Sigma_{z,\omega} \equiv \Sigma_0\beta_1/(2\sqrt{\lambda_\omega})$ for $-\beta_1 < \mu < \beta_1$. Here, we define $\Sigma_0 = \pi n_c u_0^2 v_e$ and $\lambda_\omega = \beta_1^2 - (\mu + \hbar\omega)^2 + [u_R - (\mu + \hbar\omega)]^2$, where n_c is the concentration of impurities and $u_R \equiv m\alpha_R^2/\hbar^2$ is the Rashba energy.

Using the obtained self-energy, the Green's function can be decomposed as

$$G_{k,\omega,v}^r = \frac{\Omega_+^r}{\hbar\omega - E_+ + i(\Sigma'_{0,\omega} + \gamma\Sigma_{z,\omega})} + \frac{\Omega_-^r}{\hbar\omega - E_- + i(\Sigma'_{0,\omega} - \gamma\Sigma_{z,\omega})}, \quad (8)$$

where $E_{\pm} = \varepsilon_k \pm \sqrt{\alpha_R^2 k^2 + \beta_1^2}$ is the energy dispersion of each band, and $\Omega_{\pm}^r = 1/2 \pm (\mathbf{u}^r \cdot \boldsymbol{\sigma})/2(\sqrt{\alpha_R^2 k^2 + \beta_1^2} - i\gamma\Sigma_{z,\omega})$ is the projection operator onto the each band with $\mathbf{u}^r = \alpha_R(\mathbf{k} \times \hat{z}) + v(\beta_1 - i\Sigma_z)\hat{z}$ and $\gamma = \beta_1/\sqrt{\beta_1^2 + \alpha_R^2 k^2}$. It is noticed that the first (second) term of Eq. (8) is the Green's function corresponding to the spin-split upper (lower) conduction band.

After some calculations (Appendices B and C), we find that the magnitude of C_{\perp} is comparable to that of C_{\parallel} in Eq. (1) with $\mu \gg \beta_1$. Below, we discuss in detail in this parameter regime. The results for $\mu < \beta_1$ will be given in Appendix B. For $\mu \gg \beta_1$, we obtain

$$C_{\perp} = \frac{\alpha_R}{4\pi} \Gamma^{(v)} \frac{1 - \Gamma_{xx}^{(s)}}{[1 - \Gamma_{xx}^{(s)}]^2 + [\Gamma_{xy}^{(s)}]^2}, \quad (9)$$

$$C_{\parallel} = \frac{\alpha_R}{4\pi} \Gamma^{(v)} \frac{\Gamma_{xy}^{(s)}}{[1 - \Gamma_{xx}^{(s)}]^2 + [\Gamma_{xy}^{(s)}]^2}, \quad (10)$$

where $\Gamma_{xx}^{(s)}$ ($\Gamma_{xy}^{(s)}$) is the diagonal (off-diagonal) component of the spin-vertex function, and $\Gamma^{(v)}$ is the velocity-vertex function, which are defined from the following equations: $n_c u_i^2 \sum_{\mathbf{k}} G_{k,0,v}^r \sigma^x G_{k,0,v}^a = v \Gamma_{xx}^{(s)} \sigma^x + \Gamma_{xy}^{(s)} \sigma^y$ and $\sum_{\mathbf{k}} G_{k,0,v}^r v^j G_{k,0,v}^a = \Gamma^{(v)} \epsilon_{j\ell z} \sigma^{\ell} \alpha_R v_e / (2\hbar)$.

We numerically calculate the vertex functions ($\Gamma^{(v)}$, $\Gamma_{xx}^{(s)}$, and $\Gamma_{xy}^{(s)}$) and obtain the Rashba SOC (α_R) and Ising SOC (β_1) dependence of C_{\perp} and C_{\parallel} as shown in Figs. 3(a) and 3(b), respectively. Here, we choose $\mu = 100$ meV and $\Sigma_0 = 3$ meV (which corresponds to the relaxation time $\tau = 0.1$ ps).

The results presented in Fig. 3 exhibit two important features. First, at $\beta_1 = 0$, we find that $C_{\perp} \approx C_{\perp}^0 \equiv \alpha_R/(2\Sigma_0)$, and $C_{\parallel} = 0$. Namely, the conventional Edelstein effect generated by Rashba SOCs is reproduced. Second, in $\beta_1 \neq 0$, the C_{\perp} term is suppressed, while the C_{\parallel} term becomes nonzero. For fixed β_1 , C_{\parallel} increases as a function of α_R and reaches a maximum value where $C_{\parallel} \sim C_{\perp}$. With further increase in α_R , C_{\parallel} decreases and C_{\perp} dominates the Edelstein effect.

To understand this unusual behavior of C_{\parallel} , we note that it can be approximated as $C_{\parallel} \approx \frac{\alpha_R}{4\pi} \Gamma^{(v)} \Gamma_{xy}^{(s)}$, where $\Gamma_{xy}^{(s)} \approx \frac{2\beta_1 \Sigma_0}{\alpha_R^2 k_F^2 + \beta_1^2}$ and $\Gamma^{(v)} \approx \frac{2\pi}{\Sigma_0} (1 - \frac{1}{2} \frac{\alpha_R^2 k_F^2}{\alpha_R^2 k_F^2 + \beta_1^2})$. Here, k_F is to the Fermi momentum measured from the K points. Remarkably, the expression of C_{\parallel} can be recast in the following form:

$$C_{\parallel} \simeq \cos(\theta_{\parallel}) |\Omega_{\text{spin}}^{v=\pm}(k_F)| k_F \left(1 + \frac{2\beta_1^2}{\alpha_R^2 k_F^2}\right). \quad (11)$$

Here, $\cos(\theta_{\parallel}) = \alpha_R k_F / (\alpha_R^2 k_F^2 + \beta_1^2)^{1/2}$ is the in-plane direction cosine of electron spin at the Fermi energy. $\Omega_{\text{spin}}^{v=\pm}$ is the Berry curvature based on the massive-Dirac-type Hamiltonian in Eq. (2):

$$\Omega_{\text{spin}}^{v=\pm}(k_F) = v \frac{\alpha_R^2 \beta_1}{2(\alpha_R^2 k_F^2 + \beta_1^2)^{3/2}}. \quad (12)$$

Interestingly, the valley index in Ω_{spin}^v results from the Ising SOC, which plays the role of a valley-dependent Dirac mass in Eq. (2). Based on Eq. (12), the magnitude of Ω_{spin}^v is a nonmonotonic function of α_R and β_1 , which can be visualized from the solid angle of the spin structures at the Fermi surface

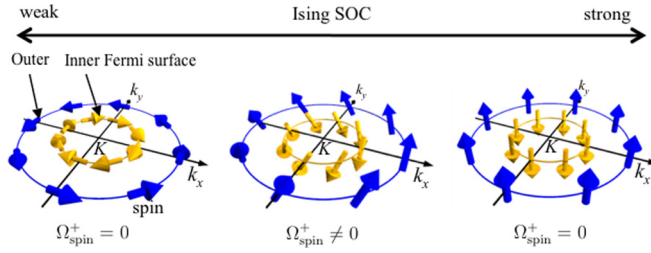


FIG. 4. Schematic of the spin structures at the Fermi surface. The Berry curvature $\Omega_{\text{spin}}^{v=+}$ induced by Rashba and Ising SOC can be visualized from the solid angle of the spin structures at K point: the Berry curvature is nearly zero at weak (left panel) and strong (right panel) Ising SOC. Finite Berry curvature can emerge when Ising and Rashba SOC are comparable.

(Fig. 4): when either β_1 or α_R is zero, the spin structure is either coplanar (left panel) or uniformly out of plane (right panel). In either case, Ω_{spin}^v is zero. In contrast, for $\alpha_R k_F \sim \beta_1$ (middle panel), Ω_{spin}^v is nonzero, which results in a finite C_{\parallel} . Notably, this special behavior of Ω_{spin}^v is qualitatively consistent with the nonmonotonic behavior of C_{\parallel} as a function of α_R in Fig. 3: when either $\alpha_R k_F \gg \beta_1$ or $\alpha_R k_F \ll \beta_1$, $\Omega_{\text{spin}}^v \approx 0$ and C_{\parallel} is small. In the intermediate regime, Ω_{spin}^v can be strong enough to induce a large C_{\parallel} , with $C_{\parallel} \sim C_{\perp}$. Based on the parameters in Fig. 3, the Berry curvature in Eq. (12) is estimated to be $\Omega_{\text{spin}}^v \approx 1 \text{ \AA}^2$ at the Fermi energy with $\mu = 100 \text{ meV}$, $\alpha_R = 20 \text{ meV \AA}$, which is 10 times of the intrinsic Berry curvature $\Omega_{\text{orbital}} \approx 0.1 \text{ \AA}^2$ with the same Fermi momentum k_F (Appendix A).

The close relation between C_{\perp} and the Berry curvature in Eq. (12) reveals the physical origin of VEEs as a combined effect of the valley-dependent Ω_{spin}^v and conventional Edelstein effect: Under applied electric fields, Ω_{spin}^v drives electrons from opposite valleys to drift in opposite transverse y directions [Fig. 1(a)]. The resultant transverse flow of electrons from opposite valleys combines with conventional Edelstein effects to induce valley-contrasting spin polarizations that are parallel to the applied electric field.

Actually, the VEE can be affected from the Berry curvature due to both spin and orbital effect. However, as discussed in the Appendix A, the Berry curvature caused by the orbital effect is indeed small (due to the large bulk gap and relative small chemical potential compared to the size of the bulk gap) compared to the Berry phase caused by the spin degrees of freedom. The situation of including both orbital and spin degrees of freedom is investigated, and it is shown that under realistic situations, the total valley Hall effect can be dominated by the Berry curvature due to SOC [42]. Therefore, the orbital Berry curvature effects could be ignored.

IV. EXPERIMENTAL DETECTIONS

In this section, we discuss how to experimentally realize and detect VEEs in gated MTMDs. Particularly, we propose that the parallel spin induced by VEEs can be detected by longitudinal Kerr effect measurements [35].

Consider the MTMD system in Fig. 1(b), by applying an electric field in the x direction, electrons from opposite valleys are driven by Ω_{spin}^v to drift in opposite y directions. In the steady

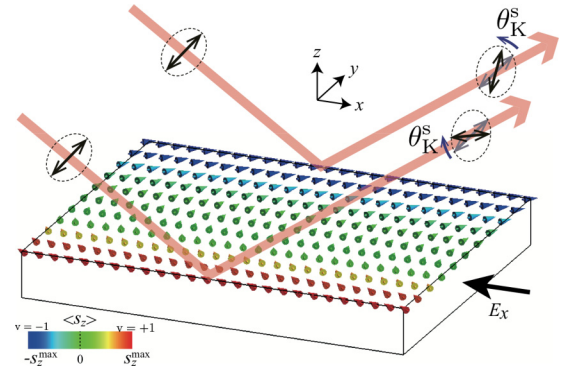


FIG. 5. Schematic for spatial spin textures generated by VEEs and detection scheme using Kerr effects. Magnitude of out-of-plane spin component is qualitatively indicated by colors. Parallel spins on the edges can be detected by the Kerr angle θ_K^s [Eq. (13)].

state, this establishes a valley imbalance near the boundaries [20], where finite spin density due to VEEs will also emerge (Fig. 5).

Here, we note that VEE has two unique signatures. First, the induced magnetization \mathbf{M}_{\parallel} is parallel to \mathbf{E} , which contrasts with the in-plane perpendicular magnetization from conventional Edelstein effect. Second, the nonzero \mathbf{M}_{\parallel} induced by VEEs is valley dependent [Eq. (1)]. Due to the valley Hall effect resulting from Ω_{spin}^v , valley polarizations accumulated near opposite edges have opposite signs [20]. As a result, \mathbf{M}_{\parallel} due to VEEs also points to opposite directions at opposite edges. Therefore, observation of nonzero edge-contrasting \mathbf{M}_{\parallel} provides strong evidence for VEEs.

Now, we discuss how to detect \mathbf{M}_{\parallel} using longitudinal Kerr effect measurements. In magneto-optic Kerr effect, an incident light of $s(p)$ polarizations are generally reflected as superposition of s - and p -polarized lights due to a magnetized surface. This effect is quantified by the Kerr angles θ_K^i ($i = s, p$) for i -polarized lights [35]. It can be shown that with proper oblique incidence setting, \mathbf{M}_{\parallel} can be related to the Kerr angle for s -polarized light [35]:

$$\hat{x} \cdot \mathbf{M}_{\parallel} / M_{\text{tot}} \propto \theta_K^s. \quad (13)$$

Here, M_{tot} is the magnitude of the total magnetization. Moreover, the edge contrasting \mathbf{M}_{\parallel} from VEEs can be mapped out by the spatial profile of θ_K^s , where the valley-dependent spin density can be signified by opposite signs of θ_K^s at opposite edges. Details of Kerr effect setting can be found in the Appendix D.

It is noted that for the optical detection, the spatial resolution of the light beam should be smaller than the valley diffusion length l_v , which for TMD samples can be on the order of micron scale [43]. For example, the valley diffusion length is found to be $l_v \sim 1 \mu\text{m}$, and the light beam of size $\sim 0.7 \mu\text{m}$ was used to probe the valley imbalance accumulated at sample boundaries due to valley Hall effect [43]. Since the valley diffusion length is an intrinsic physical property, we expect that its diffusion length is hardly affected by the spin Berry curvature. In addition, the order of the spin diffusion length is typically on the order of $1 \mu\text{m}$ [44]. Its length scale is the same order of l_v . Hence, the spin polarization induced by VEEs could

also be established on the same length scale $\sim 1 \mu\text{m}$. Therefore, the VEEs could be detected using similar spatial resolution in the Kerr effect measurement.

Finally, we estimate the obtained spin density. The obtained spin is caused by the applied electric field, and the density of each valley can be estimated as $s_{\perp} = ev_e C_{\perp} |\mathbf{E} \times \hat{\mathbf{z}}|$ and $s_{\parallel} = ev_e C_{\parallel} |\mathbf{E}|$, respectively. These are estimated as $s_{\perp} \approx 13 \mu\text{m}^{-2}$ and $s_{\parallel} \approx 8 \mu\text{m}^{-2}$, respectively, when we apply a dc electric field $E_x = 100 \text{ mV}/\mu\text{m}$ for the system with $\beta_1 = 10 \text{ meV}$, $\alpha_R = 10 \text{ meV}\text{\AA}$, $\mu = 0.1 \text{ eV}$, $\Sigma_0 = 3 \text{ meV}$, and $m/m_e = 0.5$ with m_e being the electron rest mass. The magnitude of the induced spin density could be measurable. The reason is that its magnitude is comparable to the magnitude of the conventional spin density, which is detected at the interface of the InGaAs/GaAs [30], where its magnitude is about $\rho_{\text{el}} d \approx 8 \mu\text{m}^{-2}$ under the thickness of the film $d \approx 1 \mu\text{m}$ [45].

V. CONCLUSION

In this work, we predict that Berry curvatures due to co-existing Rashba and Ising SOCs combined with conventional Edelstein effects lead to VEEs in gated MTMDs, in which valley-contrasting spin polarization parallel to the applied electric field can be generated. The parallel spin polarization due to VEEs can be comparable to the perpendicular spin polarization via conventional Edelstein effect. Experimental realization of VEE can be detected by longitudinal Kerr effects.

ACKNOWLEDGMENTS

We acknowledge useful discussions with T. Yokoyama, T. Takenobu, C.-Z. Chen, and K. F. Mak. This work was supported by a Grant-in-Aid for the Core Research for Evolutional Science and Technology (CREST) of the Japan Science and Technology Corporation (JST) (Grant No. JPMJCR14F1) and by JSPS KAKENHI Grants No. JP15K17726 and No. JP16H00989; K.T. is supported by a Grant-in-Aid for JSPS Fellows (Grant No. 13J03141). K.T.L. thanks the support of HKRGC, the Croucher Foundation, and Dr. Tai-chin Lo Foundation through Grants No. HKUST3/CRF/13G, No. C6026-16W, and No. 16324216 and Croucher Innovation Grants.

APPENDIX A: BERRY CURVATURE IN GATED MTMDs

We evaluate Berry curvature in pristine MTMDs and that in gated MTMDs. The former is given by the effective massive Dirac-Hamiltonian. The effective Hamiltonian is given by $\mathcal{H}_{\text{orbital}} = \hbar V_F (v k_x \tau_x + k_y \tau_y) + \Delta \tau_z$, where $v = \pm$ is the valley index, V_F is the Fermi velocity, τ is Pauli matrix acting on orbital degrees of freedom, and 2Δ corresponds to the band gap between conduction band and valence band [20]. Then, the intrinsic Berry curvature Ω_{orbital} is given by

$$\Omega_{\text{orbital}}(k) = \frac{\hbar^2 V_F^2 \Delta}{2(\hbar^2 V_F^2 k^2 + \Delta^2)^{3/2}}. \quad (\text{A1})$$

On the other hand, the Berry curvature in gated MTMDs results from the effective massive-Dirac-type Hamiltonian given by $\mathcal{H}_{\text{spin}} = (\frac{\hbar^2 k^2}{2m} - \mu)\sigma_0 + \alpha_R(k_y \sigma_x - k_x \sigma_y) + v\beta_1 \sigma_z$ which is also a Dirac-type Hamiltonian, but with an extra σ_0 term which does not affect the Berry curvature. Here, σ is the

Pauli matrix in spin space. The Berry curvature induced by Rashba and Ising SOCs is given by

$$\Omega_{\text{spin}}^{v=\pm}(k) \equiv \hat{\mathbf{z}} \cdot \nabla \times \langle \mathbf{k}, v | i \nabla | \mathbf{k}, v \rangle = v \frac{\alpha_R^2 \beta_1}{2(\alpha_R^2 k_F^2 + \beta_1^2)^{3/2}}, \quad (\text{A2})$$

where $|\mathbf{k}, v\rangle$ is the wave function of the effective massive Dirac-Hamiltonian in the gated MTMD. We find that the Berry curvature in gated MTMD is estimated by $|\Omega_{\text{spin}}^{v=\pm}(k = k_F)| \approx 1.26 \text{ \AA}^2$, when we use realistic parameters $\beta_1 = 10 \text{ meV}$, $\alpha_R = 20 \text{ meV \AA}$, $\mu = 100 \text{ meV}$, and $m/m_e = 0.5$ with m_e being the electron rest mass. On the other hand, the intrinsic Berry curvature is given by $|\Omega_{\text{orbital}}(k = k_F)| \approx 0.096 \text{ \AA}^2$, when we chose the realistic parameters $\Delta = 1.79 \text{ eV}$, $V_F = 4.38 \text{ eV \AA}$, $\mu = 100 \text{ meV}$, and $m/m_e = 0.5$. Therefore, we find that in the regime considered in this work, $|\Omega_{\text{spin}}^{v=\pm}(k_F)| \gg |\Omega_{\text{orbital}}(k_F)|$.

APPENDIX B: DERIVATION OF C_{\parallel} AND C_{\perp} IN $|\mu - \Sigma_0| < \beta_1$

Since preexisting works of the conventional Edelstein effect used Green's function techniques [25], we also use Green's functions in the following calculation. The calculation is assumed when the magnitude of the self-energy of nonmagnetic impurity scattering is smaller than that of the chemical potential ($\mu \gg \Sigma_0$ as shown in Fig. 6). First, we introduce the impurity-averaged Green's functions in $|\mu - \Sigma_0| < \beta_1$:

$$G_{\mathbf{k}, \omega, v}^r = \frac{\Omega_+}{\hbar\omega - E_+ + i(\Sigma'_0 + \gamma\Sigma_z)} + \frac{\Omega_-}{\hbar\omega - E_- + i(\Sigma'_0 - \gamma\Sigma_z)}, \quad (\text{B1})$$

with

$$\Omega_{\pm} = \frac{1}{2}[1 \pm (\mathbf{u} \cdot \boldsymbol{\sigma})/u_0], \quad (\text{B2})$$

$$\mathbf{u} = \alpha_R(\mathbf{k} \times \hat{\mathbf{z}}) + v(\beta_1 - i\Sigma_z)\hat{\mathbf{z}}, \quad (\text{B3})$$

$$u_0 = \sqrt{\alpha_R^2 k^2 + \beta_1^2} - i\gamma\Sigma_z, \quad (\text{B4})$$

$$\Sigma'_0 = \left[\frac{1}{2} + \frac{u_R}{2\sqrt{\beta_1^2 - \mu^2 + (u_R - \mu)^2}} \right] \Sigma_0, \quad (\text{B5})$$

$$\Sigma_0 = \pi v_e n_c u_1^2, \quad (\text{B6})$$

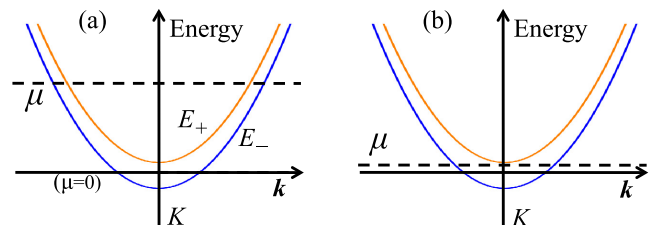


FIG. 6. Schematic illustration of spin-split conduction bands of the MTMD around K point for (a) $\mu > \beta_1$ and (b) $-\beta_1 \leq \mu \leq \beta_1$.

$$\Sigma_z = \frac{\beta_1}{2\sqrt{\beta_1^2 - \mu^2 + (u_R - \mu)^2}} \Sigma_0, \quad (\text{B7})$$

$$\gamma(\xi) = \frac{\beta_1}{\sqrt{2u_R\xi + \beta_1^2}}, \quad (\text{B8})$$

$$u_R = m\alpha_R^2/\hbar^2. \quad (\text{B9})$$

Here, $E_{\pm} = \epsilon_k \pm \sqrt{\alpha_R^2 k^2 + \beta_1^2}$ denotes the energy dispersion of the spin-splitting bands. It is noticed that the first (second) term of Eqs. (B1) is the Green's function corresponding to the upper (lower) spin-split conduction band. Since the top conduction band is far from the Fermi level, contributions from the first term of Eqs. (B1) is negligibly small compared with that from the second term of Eqs. (B1). Hence, the first term of Eqs. (B1) is ignored in the following calculation.

The electric-field-induced spin density of each valley is given from Eq. (6) in the main text as

$$\langle s_v^{\text{VEE},i} \rangle = -\frac{e\hbar}{4\pi} \sum_k \sum_{j=x,y} \text{tr}[\sigma^i G_{k,v}^r S_{k,0,v}^j G_{k,v}^a] E_j, \quad (\text{B10})$$

where $v_j \equiv \partial\mathcal{H}_v/(\partial\hbar k_j)$ is the velocity operator and $G_{k,v}^a \equiv G_{k,\omega=0,v}^a [= (G_{k,\omega=0,v}^r)^\dagger]$ is the advanced Green's function. $S_{k,\omega,v}^j$ is defined by

$$\begin{aligned} S_{k,\omega,v}^j &= v_j + n_c u_1^2 \sum_k G_{k,\omega,v}^r v_j G_{k,\omega,v}^a + (n_c u_1^2)^2 \\ &\times \sum_{k,k_1} G_{k_1,\omega,v}^r G_{k,\omega,v}^r v_j G_{k,\omega,v}^a G_{k_1,\omega,v}^a + \dots \end{aligned} \quad (\text{B11})$$

Then, $\sum_k G_{k,v}^r S_{k,0,v}^j G_{k,v}^a$ of Eq. (B10) is described by using $\Gamma_{jn}^{(v)}$ and $\Gamma_{jn}^{(s)}$ as

$$\begin{aligned} &\sum_k G_{k,v}^r S_{k,0,v}^j G_{k,v}^a \\ &= \sum_{n=x,y} \tilde{\Gamma}_{jn}^{(v)} \left[\sigma^n + n_c u_1^2 \sum_k G_{k,v}^r \sigma^n G_{k,v}^a + (n_c u_1^2)^2 \right. \\ &\quad \left. \times \sum_{k,k_1} G_{k_1,v}^r G_{k,v}^r \sigma^n G_{k,v}^a G_{k_1,v}^a + \dots \right] \\ &= \sum_{n,\ell=x,y} \tilde{\Gamma}_{jn}^{(v)} [\delta_{n\ell} + \tilde{\Gamma}_{n\ell}^{(s)} + \tilde{\Gamma}_{n\ell_1}^{(s)} \tilde{\Gamma}_{\ell_1\ell}^{(s)} + \dots] \sigma^\ell, \end{aligned} \quad (\text{B12})$$

where $\tilde{\Gamma}_j^{(v)}$ and $\tilde{\Gamma}_j^{(s)}$ denote the vertex function of the velocity operator and of the spin operator, respectively:

$$\tilde{\Gamma}_j^{(s)} \equiv n_c u_1^2 \sum_k G_{k,v}^r \sigma^j G_{k,v}^a = \sum_{\ell=x,y} \tilde{\Gamma}_{n\ell}^{(s)} \sigma^\ell, \quad (\text{B13})$$

$$\tilde{\Gamma}_j^{(v)} \equiv \sum_k G_{k,v}^r v_j G_{k,v}^a = \sum_{n=x,y} \tilde{\Gamma}_{jn}^{(v)} \sigma^n, \quad (\text{B14})$$

$$\begin{aligned} \tilde{\Gamma}_{xy}^{(v)} &\equiv \int_0^\infty \frac{1}{E_\xi^2 + (\Sigma_0' - \gamma \Sigma_z)^2} \frac{\xi \sqrt{2u_R\xi + \beta_1^2}}{2u_R\xi + \beta_1^2 + \gamma^2 \Sigma_z^2} d\xi \\ &\quad - \frac{2\pi}{\Sigma_0} \Gamma^{(s)}, \end{aligned} \quad (\text{B15})$$

$$\tilde{\Gamma}_{xx}^{(v)} \equiv \int_0^\infty \frac{\Sigma_z}{E_\xi^2 + (\Sigma_0' - \gamma \Sigma_z)^2} \frac{\xi - \sqrt{2u_R\xi + \beta_1^2} + \gamma\beta_1}{2u_R\xi + \beta_1^2 + \gamma^2 \Sigma_z^2} d\xi, \quad (\text{B16})$$

$$\begin{aligned} \tilde{\Gamma}^{(s)} &= \frac{\Sigma_0}{4\pi} \int_0^\infty \frac{1}{E_\xi^2 + (\Sigma_0' - \gamma \Sigma_z)^2} \\ &\quad \times \left[1 - \frac{\beta_1^2 + \Sigma_z^2}{2u_R\xi + \beta_1^2 + \gamma^2 \Sigma_z^2} \right] d\xi, \end{aligned} \quad (\text{B17})$$

where $\tilde{\Gamma}_{jn}^{(v)}$ and $\tilde{\Gamma}_{jn}^{(s)}$ are coefficients of the matrix component of $\tilde{\Gamma}_j^{(v)}$ and $\tilde{\Gamma}_j^{(s)}$, respectively. We use $E_\xi = \xi - \mu + \sqrt{2u_R\xi + \beta_1^2}$. As a result, the electric-field-induced spin density $\langle s_v^{\text{VEE},i} \rangle$ is given from Eqs. (B10)–(B17) as

$$\begin{aligned} \langle s_v^{\text{VEE}} \rangle &= -\frac{e\hbar}{2\pi} \sum_{n,j=x,y} \tilde{\Gamma}_{jn}^{(v)} [\delta_{ni} + \tilde{\Gamma}_{ni}^{(s)} + \tilde{\Gamma}_{n\ell_1}^{(s)} \tilde{\Gamma}_{\ell_1 i}^{(s)} + \dots] E_j \\ &= -ev_e \mathcal{C}_\perp (\hat{z} \times \mathbf{E}) - vev_e \mathcal{C}_\parallel \mathbf{E}, \end{aligned} \quad (\text{B18})$$

where \mathcal{C}_\perp and \mathcal{C}_\parallel are given by

$$\mathcal{C}_\perp = \frac{\alpha_R}{4\pi} \tilde{\Gamma}_{xy}^{(v)} [1 - \tilde{\Gamma}^{(s)}]^{-1} \approx \frac{\alpha_R}{4\pi} \tilde{\Gamma}_{xy}^{(v)}, \quad (\text{B19})$$

$$\mathcal{C}_\parallel = \frac{\alpha_R}{4\pi} \tilde{\Gamma}_{xx}^{(v)} [1 - \tilde{\Gamma}^{(s)}]^{-1} \approx \frac{\alpha_R}{4\pi} \tilde{\Gamma}_{xx}^{(v)}, \quad (\text{B20})$$

where we have used the spin-vertex function $|\tilde{\Gamma}_{xy}^{(s)}| < 1$. In particular, in the limit of $\Sigma_z \ll \beta_1$, we have

$$\tilde{\Gamma}_{xy}^{(v)} \approx \frac{-\pi}{2(\Sigma_0' - \gamma \Sigma_z)} \left[1 - \frac{\beta_1^2 + \Sigma_z^2 + \mu \sqrt{2u_R\mu + \beta_1^2}}{2u_R\mu + \beta_1^2 + \gamma^2 \Sigma_z^2} \right], \quad (\text{B21})$$

$$\tilde{\Gamma}_{xx}^{(v)} \approx \frac{\pi \Sigma_z}{2(\Sigma_0' - \gamma \Sigma_z)} \frac{\mu - \sqrt{2u_R\mu + \beta_1^2} + \gamma\beta_1}{2u_R\mu + \beta_1^2 + \gamma^2 \Sigma_z^2}, \quad (\text{B22})$$

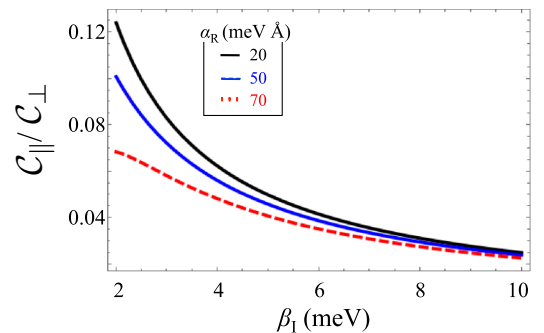


FIG. 7. The Ising SOC β_1 dependence of $\mathcal{C}_\parallel/\mathcal{C}_\perp$ in the conduction band in $\beta_1 > \mu$ for several Rashba SOC (α_R) at $\Sigma_0 = 0.3$ meV.

and

$$C_{\parallel} \approx \frac{\alpha_R}{8} \frac{\Sigma_z}{\Sigma'_0 - \gamma \Sigma_z} \frac{\mu - \sqrt{\alpha_R^2 k_F^2 + \beta_I^2} + \gamma \beta_I}{\alpha_R^2 k_F^2 + \beta_I^2} \quad (\text{B23})$$

with Fermi wave number $k_F = \sqrt{\frac{2m\mu}{\hbar^2}}$. Figure 7 shows that the Ising SOC dependence of C_{\parallel}/C_{\perp} in $\beta_I < \mu$ for several α_R . We find $C_{\parallel}/C_{\perp} < 1$ in the whole of β_I .

APPENDIX C: DERIVATION OF C_{\parallel} AND C_{\perp} IN $|\mu - \Sigma_0| > \beta_I$

1. Detail of the calculation of C_{\parallel} and C_{\perp}

In this appendix, we use $\Gamma_{ij}^{(s)}$ and $\Gamma_{ij}^{(v)}$ to denote the spin vertex function and the velocity vertex function in $|\mu - \Sigma_0| > \beta_I$, respectively. From the same way, we obtain the spin density as

$$\begin{aligned} \langle \mathbf{s}_v^{\text{VEE},i} \rangle &= -\frac{e\hbar}{2\pi} \Gamma_{jn}^{(v)} [\delta_{ni} + \Gamma_{ni}^{(s)} + \Gamma_{n\ell_1}^{(s)} \Gamma_{\ell_1 i}^{(s)} + \dots] E_j \\ &= ev_e [C_{\perp} (\hat{\mathbf{z}} \times \mathbf{E})_i + vC_{\parallel} E_i] \end{aligned} \quad (\text{C1})$$

with

$$C_{\perp} = \frac{\alpha_R}{4\pi} \Gamma^{(v)} \frac{1 - \Gamma_{xx}^{(s)}}{[1 - \Gamma_{xx}^{(s)}]^2 + [\Gamma_{xy}^{(s)}]^2}, \quad (\text{C2})$$

$$C_{\parallel} = \frac{\alpha_R}{4\pi} \Gamma^{(v)} \frac{\Gamma_{xy}^{(s)}}{[1 - \Gamma_{xx}^{(s)}]^2 + [\Gamma_{xy}^{(s)}]^2}, \quad (\text{C3})$$

$$\Gamma_{xx}^{(s)} = \Gamma_{yy}^{(s)} = \frac{\Sigma_0}{\pi} \int_0^{\infty} d\xi \frac{(\xi - \mu)^2 + \Sigma_0^2 - \beta_I^2}{(E_+^2 + \Sigma_0^2)(E_-^2 + \Sigma_0^2)}, \quad (\text{C4})$$

$$\Gamma_{xy}^{(s)} = -\Gamma_{yx}^{(s)} = \frac{\Sigma_0}{\pi} \int_0^{\infty} d\xi \frac{4u_z \Sigma_0}{(E_+^2 + \Sigma_0^2)(E_-^2 + \Sigma_0^2)}, \quad (\text{C5})$$

$$\Gamma^{(v)} = 4 \int_0^{\infty} d\xi \frac{\xi - \mu - \frac{u_R}{u} [(\xi - \mu)^2 + \Sigma_0^2]}{(E_+^2 + \Sigma_0^2)(E_-^2 + \Sigma_0^2)} \xi, \quad (\text{C6})$$

where we have used $\Sigma_0 = \pi v_e n_c u_i^2$, $\alpha_R^2 k^2 = 2u_R \xi$, $u_R = m\alpha_R^2/\hbar^2$, $E_{\pm} = \xi - \mu \pm u$, and $u = \sqrt{2u_R \xi + \beta_I^2}$. Within the limit of $u_R \ll \Sigma_0$ and $\mu \gg \Sigma_0$, we have

$$\Gamma_{xy}^{(s)} \approx \frac{2\beta_I \Sigma_0}{\beta_I^2 + \alpha_R^2 k_F^2 + \Sigma_0^2} \approx \frac{2\beta_I \Sigma_0}{\beta_I^2 + \alpha_R^2 k_F^2}, \quad (\text{C7})$$

$$\Gamma^{(v)} \approx \frac{2\pi}{\Sigma_0} \left[1 - \frac{1}{2} \left(1 - \frac{\beta_I^2}{\beta_I^2 + \alpha_R^2 k_F^2} \right) \right]. \quad (\text{C8})$$

As a result, we obtain within $|\Gamma_{xx}^{(s)}| < 1$ and $|\Gamma_{xy}^{(s)}| < 1$ as

$$C_{\perp} \approx \frac{\alpha_R}{4\pi} \Gamma^{(v)} \approx \frac{\alpha_R}{2\Sigma_0} \left[1 - \frac{1}{2} \frac{\alpha_R^2 k_F^2}{\beta_I^2 + \alpha_R^2 k_F^2} \right], \quad (\text{C9})$$

$$C_{\parallel} \approx \frac{\alpha_R}{4\pi} \Gamma^{(v)} \Gamma_{xy}^{(s)} \approx \frac{\alpha_R \beta_I}{\beta_I^2 + \alpha_R^2 k_F^2} \left[1 - \frac{1}{2} \frac{\alpha_R^2 k_F^2}{\beta_I^2 + \alpha_R^2 k_F^2} \right], \quad (\text{C10})$$

where we have used

$$\int_0^{\infty} \frac{d\xi}{(E_+^2 + \Sigma_0^2)(E_-^2 + \Sigma_0^2)} \approx \frac{\pi}{2\Sigma_0(\beta_I^2 + \alpha_R^2 k_F^2)}. \quad (\text{C11})$$

Figure 8(a) [8(b)] shows the α_R (β_I) dependence of C_{\parallel}/C_{\perp} for several β_I (α_R) in $\mu > \beta_I$. We find that C_{\parallel} can be comparable to C_{\perp} .

2. Relation between C_{\parallel} and Berry curvature

Interestingly, C_{\parallel} can be also represented by using Berry curvature in the gated MTMDs. The Berry curvature in the presence of the Rashba and Ising SOCs at each valley are given by

$$\begin{aligned} \Omega_{\text{spin}}^{v=\pm}(k_F) &= \hat{\mathbf{z}} \cdot \nabla \times \langle \mathbf{k}, v | i \nabla | \mathbf{k}, v \rangle |_{|\mathbf{k}|=k_F} \\ &= v \frac{\alpha_R^2 \beta_I}{2(\alpha_R^2 k_F^2 + \beta_I^2)^{3/2}}. \end{aligned} \quad (\text{C12})$$

By using the spin Berry curvature of the gated MTMD $\Omega_{\text{spin}}^{v=\pm}$, C_{\parallel} is represented from Eq. (C10) as

$$\begin{aligned} C_{\parallel} &\approx \frac{\alpha_R^2 \beta_I}{(\alpha_R^2 k_F^2 + \beta_I^2)^{3/2}} \frac{1}{\alpha_R} \frac{\alpha_R^2 k_F^2 + 2\beta_I^2}{\sqrt{\alpha_R^2 k_F^2 + \beta_I^2}} \\ &= |\Omega_{\text{spin}}^v(k_F)| k_F \frac{\alpha_R k_F}{\sqrt{\alpha_R^2 k_F^2 + \beta_I^2}} \left[1 + \frac{2\beta_I^2}{\alpha_R^2 k_F^2} \right] \\ &= |\Omega_{\text{spin}}^v(k_F)| k_F \cos \theta_{\parallel} \left[1 + \frac{2\beta_I^2}{\alpha_R^2 k_F^2} \right], \end{aligned} \quad (\text{C13})$$

where we define $\cos \theta_{\parallel} \equiv \frac{\alpha_R k_F}{\sqrt{\alpha_R^2 k_F^2 + \beta_I^2}}$.

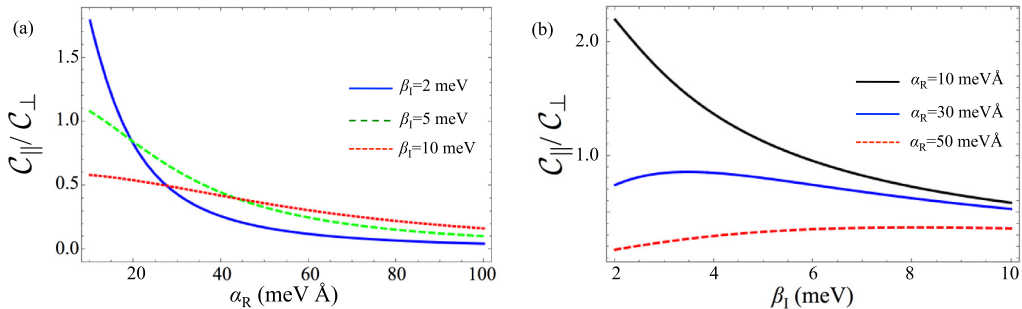


FIG. 8. (a) The Rashba SOC (α_R) dependence of C_{\parallel}/C_{\perp} for several the Ising SOC (β_I) in the conduction band in $\mu > \beta_I$. (b) β_I dependence of C_{\parallel}/C_{\perp} for several Rashba SOC (α_R). In these figures, we used $\Sigma_0 = 3$ meV and $\mu = 0.1$ eV. We find that C_{\parallel} can be comparable to C_{\perp} in a realistic parameter regime.

APPENDIX D: DETECTION OF VEE USING KERR EFFECT MEASUREMENTS

We provide the detection scheme of the VEE using Kerr effect measurements. To detect the in-plane parallel magnetization due to the VEE, we consider the longitudinal Kerr effect, as described in Fig. 5 in the main text. After applying the in-plane electric field (E_x), spin density can be generated by VEEs in the steady state, which induces nonzero magnetization in gated MTDMs. By focusing a beam of laser with $s(p)$ polarizations onto the system, the nonzero magnetization couples differentially with left-handed and right-handed components, which leads to a superposition of both s - and p -polarized lights in the reflected beam. The reflection coefficients r_{ij} for $i, j = s, p$ -polarized lights are given by [35]

$$r_{pp} = \frac{n_2 \cos \theta_0 - n_0 \cos \theta_2}{n_2 \cos \theta_0 + n_0 \cos \theta_2} - \frac{4\pi i n_0 d_1 \cos \theta_0 (n_2^2 \cos^2 \theta_1 - n_1^2 \cos^2 \theta_2)}{\lambda (n_0 \cos \theta_2 + n_2 \cos \theta_0)^2}, \quad (\text{D1})$$

$$r_{sp} = \frac{4\pi n_0 n_1 Q d_1 \cos \theta_0 (M_z n_1 \cos \theta_2 + M_x n_2 \sin \theta_1)}{M_{\text{tot}} (n_0 \cos \theta_0 + n_2 \cos \theta_2) (n_0 \cos \theta_2 + n_2 \cos \theta_0)}, \quad (\text{D2})$$

$$r_{ps} = \frac{4\pi n_0 n_1 Q d_1 \cos \theta_0 (M_z n_1 \cos \theta_2 - M_x n_2 \sin \theta_1)}{M_{\text{tot}} (n_0 \cos \theta_0 + n_2 \cos \theta_2) (n_0 \cos \theta_2 + n_2 \cos \theta_0)}, \quad (\text{D3})$$

where n_l and θ_l ($l = 0, 1, 2$) denote the refractive index and the incident angle at the l th medium (shown in Fig. 9). Q is the Voigt vector depending on materials, d_1 is the thickness of the magnetic medium, λ is wavelength of the light, M_i ($i = x, y, z$) are the i component of the magnetization, and $M_{\text{tot}} = \sqrt{M_x^2 + M_y^2 + M_z^2}$ is the magnitude of the magnetization. From Eqs. (D1)–(D3), the Kerr angle for $i = s, p$ -polarized light, θ_K^i , is given by [35]

$$\theta_K^p = \frac{\cos \theta_0}{\cos(\theta_0 + \theta_2)} \left(\frac{M_x}{M_{\text{tot}}} \frac{\sin \theta_1^2}{\sin \theta_2} + \frac{M_z}{M_{\text{tot}}} \cos \theta_2 \right) \Theta_n, \quad (\text{D4})$$

$$\theta_K^s = \frac{\cos \theta_0}{\cos(\theta_0 - \theta_2)} \left(\frac{M_x}{M_{\text{tot}}} \frac{\sin \theta_1^2}{\sin \theta_2} - \frac{M_z}{M_{\text{tot}}} \cos \theta_2 \right) \Theta_n. \quad (\text{D5})$$

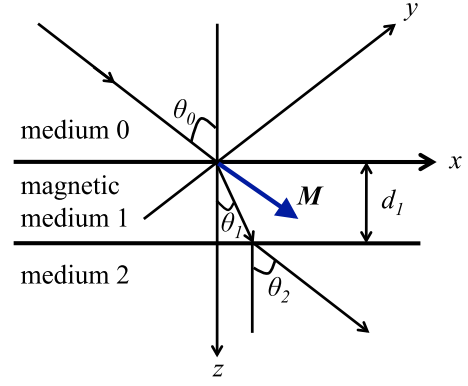


FIG. 9. The coordinate system for the Kerr effect measurement in the nonmagnetic medium 0 and 2 and the magnetic medium 1, where the magnetization (blue arrow) is polarized along arbitrary direction.

Here, Θ_n is defined as the complex polar Kerr effect for normal incidence in the film given by

$$\Theta_n \equiv \frac{4\pi n_0 n_1^2 Q d}{\lambda (n_s^2 - n_0^2)}. \quad (\text{D6})$$

The Voigt vector Q is determined by the the Kerr angle for the p -polarized wave under the normal incident light $(\theta_K^p)^{\text{normal}}$ as

$$\begin{aligned} (\theta_K^p)^{\text{normal}} &\equiv \frac{r_{sp}(\theta_0 = 0)}{r_{pp}(\theta_0 = 0)} \\ &= \frac{4\pi n_0 n_1^2 Q d_1 \cos \theta_0 \cos \theta_2}{(n_0 \cos \theta_0 + n_1 \cos \theta_2) (n_1 \cos \theta_0 - n_0 \cos \theta_2)}. \end{aligned} \quad (\text{D7})$$

By considering medium 0 and medium 2 with similar refractive indices (i.e., $n_0 \approx n_2$ and $\theta_0 \approx \theta_2$), the relation between the in-plane magnetization M_x and Kerr angle is given by

$$M_x = \frac{1}{2\Theta_n} \frac{\sin \theta_0 \cos \theta_0}{\sin \theta_1^2} [\theta_K^s + \theta_K^p \cos(2\theta_0)] M_{\text{tot}}. \quad (\text{D8})$$

Based on the relation above, for oblique incidence with the incident angle $\theta_0 \approx \pi/4$, we have

$$M_x \propto \theta_K^s \quad (\text{D9})$$

as discussed in the main text. Therefore, the parallel spin density due to VEEs can be mapped out by θ_K^s .

[1] X. Xu, W. Yao, D. Xiao, and T. F. Heinz, *Nat. Phys.* **10**, 343 (2014).
 [2] A. Splendiani, L. Sun, Y. Zhang, T. Li, J. Kim, C. Y. Chim, G. Galli, and F. Wang, *Nano Lett.* **10**, 1271 (2010).
 [3] K. F. Mak, C. Lee, J. Hone, J. Shan, and T. F. Heinz, *Phys. Rev. Lett.* **105**, 136805 (2010).
 [4] Q. H. Wang, K. Kalantar-Zadeh, A. Kis, J. N. Coleman, and M. S. Strano, *Nat. Nanotechnol.* **7**, 699 (2012).
 [5] A. K. Geim and I. V. Grigorieva, *Nature (London)* **499**, 419 (2013).
 [6] A. Kuc, N. Zibouche, and T. Heine, *Phys. Rev. B* **83**, 245213 (2011).

[7] Z. Y. Zhu, Y. C. Cheng, and U. Schwingenschlöggl, *Phys. Rev. B* **84**, 153402 (2011).
 [8] F. Zahid, L. Liu, Y. Zhu, J. Wang, and H. Guo, *AIP Adv.* **3**, 52111 (2013).
 [9] H. Shi, H. Pan, Y.-W. Zhang, and B. I. Yakobson, *Phys. Rev. B* **87**, 155304 (2013).
 [10] E. Cappelluti, R. Roldán, J. A. Silva-Guillén, P. Ordejón, and F. Guinea, *Phys. Rev. B* **88**, 075409 (2013).
 [11] H. Yuan, M. S. Bahramy, K. Morimoto, S. Wu, K. Nomura, B.-J. Yang, H. Shimotani, R. Suzuki, M. Toh, C. Kloc, X. Xu, R. Arita, N. Nagaosa, and Y. Iwasa, *Nat. Phys.* **9**, 563 (2013).

- [12] H. Rostami, A. G. Moghaddam, and R. Asgari, *Phys. Rev. B* **88**, 085440 (2013).
- [13] A. Kormanyos, V. Zolyomi, N. D. Drummond, P. Rakyta, G. Burkard, and V. I. Falko, *Phys. Rev. B* **88**, 045416 (2013).
- [14] G.-B. Liu, W.-Y. Shan, Y. Yao, W. Yao, and D. Xiao, *Phys. Rev. B* **88**, 085433 (2013).
- [15] H. Ochoa and R. Roldán, *Phys. Rev. B* **87**, 245421 (2013).
- [16] J. M. Lu, O. Zheliuk, I. Leermakers, N. F. Q. Yuan, U. Zeitler, K. T. Law, and J. T. Ye, *Science* **350**, 1353 (2015).
- [17] X. Xi, Z. Wang, W. Zhao, J.-H. Park, K. T. Law, H. Berger, L. Forró, J. Shan, and K. F. Mak, *Nat. Phys.* **12**, 139 (2016).
- [18] F. Rose, M. O. Goerbig, and F. Piechon, *Phys. Rev. B* **88**, 125438 (2013).
- [19] Z. Song, R. Quhe, S. Liu, Y. Li, J. Feng, Y. Yang, J. Lu, and J. Yang, *Sci. Rep.* **5**, 13906 (2015).
- [20] D. Xiao, G. B. Liu, W. Feng, X. Xu, and W. Yao, *Phys. Rev. Lett.* **108**, 196802 (2012).
- [21] T. Cao, G. Wang, W. Han, H. Ye, C. Zhu, J. Shi, Q. Niu, P. Tan, E. Wang, B. Liu, and J. Feng, *Nat. Commun.* **3**, 887 (2012).
- [22] K. F. Mak, K. L. McGill, J. Park, and P. L. McEuen, *Science* **344**, 1489 (2014).
- [23] Y. Saito, Y. Nakamura, M. S. Bahramy, Y. Kohama, J. Ye, Y. Kasahara, Y. Nakagawa, M. Onga, M. Tokunaga, T. Nojima, Y. Yanase, and Y. Iwasa, *Nat. Phys.* **12**, 144 (2015).
- [24] A. G. Aronov and Y. B. Lyanda-Geller, *Z. Pis'ma Eksp. Teor. Fiz.* **50**, 398 (1989) [*Sov. Phys. JETP Lett.* **50**, 431 (1989)].
- [25] V. M. Edelstein, *Solid State Commun.* **73**, 233 (1990).
- [26] A. V. Chaplik, M. V. Entin, and L. I. Magarill, *Phys. E* **13**, 744 (2002).
- [27] J. I. Inoue, G. E. W. Bauer, and L. W. Molenkamp, *Phys. Rev. B* **67**, 033104 (2003).
- [28] K. Shen, G. Vignale, and R. Raimondi, *Phys. Rev. Lett.* **112**, 096601 (2014).
- [29] T. Yoda, T. Yokoyama, and S. Murakami, *Sci. Rep.* **5**, 12024 (2015).
- [30] Y. K. Kato, R. C. Myers, A. C. Gossard, and D. D. Awschalom, *Phys. Rev. Lett.* **93**, 176601 (2004).
- [31] A. Y. Silov, P. A. Blajnov, J. H. Wolter, R. Hey, K. H. Ploog, and N. S. Averkiev, *AIP Conf. Proc.* **772**, 1405 (2005).
- [32] M. Isasa, M. C. Martínez-Velarte, E. Villamor, C. Magén, L. Morellón, J. M. De Teresa, M. R. Ibarra, G. Vignale, E. V. Chulkov, E. E. Krasovskii, L. E. Hueso, and F. Casanova, *Phys. Rev. B* **93**, 014420 (2016).
- [33] J. Borge, C. Gorini, G. Vignale, and R. Raimondi, *Phys. Rev. B* **89**, 245443 (2014).
- [34] H. Yuan, X. Wang, B. Lian, H. Zhang, X. Fang, B. Shen, G. Xu, Y. Xu, S.-C. Zhang, H. Y. Hwang, and Y. Cui, *Nat. Nanotechnol.* **9**, 851 (2014).
- [35] C.-Y. You and S.-C. Shin, *J. Appl. Phys.* **84**, 541 (1998).
- [36] J. T. Ye, Y. J. Zhang, R. Akashi, M. S. Bahramy, R. Arita, and Y. Iwasa, *Science* **338**, 1193 (2012).
- [37] K. Taniguchi, A. Matsumoto, H. Shimotani, and H. Takagi, *Appl. Phys. Lett.* **101**, 42603 (2012).
- [38] N. F. Q. Yuan, K. F. Mak, and K. T. Law, *Phys. Rev. Lett.* **113**, 097001 (2014).
- [39] Y. Shimazaki, M. Yamamoto, I. V. Borzenets, K. Watanabe, T. Taniguchi, and S. Tarucha, *Nat. Phys.* **11**, 1032 (2015).
- [40] M. Sui, G. Chen, L. Ma, W.-Y. Shan, D. Tian, K. Watanabe, T. Taniguchi, X. Jin, W. Yao, D. Xiao, and Y. Zhang, *Nat. Phys.* **11**, 1027 (2015).
- [41] H. Haug and A. P. Jauho, *Quantum Kinetics in Transport and Optics of Semiconductors*, 2nd ed. (Springer, New York, 2007).
- [42] B. T. Zhou, K. Taguchi, Y. Kawaguchi, Y. Yanaka, and K. T. Law, [arXiv:1712.02942](https://arxiv.org/abs/1712.02942).
- [43] J. Lee, K. F. Mak, and J. Shan, *Nat. Nanotechnol.* **11**, 421 (2016).
- [44] M. I. Dyakonov, *Spin Physics in Semiconductors* (Springer, Berlin, 2008), Chaps. 1 and 8.
- [45] Y. Kato, R. C. Myers, A. C. Gossard, and D. D. Awschalom, *Nature (London)* **427**, 50 (2004).