

Topological phase detection in Rashba nanowires with a quantum dotDenis Chevallier,¹ Paweł Szumniak,^{1,2} Silas Hoffman,¹ Daniel Loss,¹ and Jelena Klinovaja¹¹*Department of Physics, University of Basel, Klingelbergstrasse 82, 4056 Basel, Switzerland*²*AGH University of Science and Technology, Faculty of Physics and Applied Computer Science, aleja Mickiewicza 30, 30-059 Kraków, Poland*

(Received 16 October 2017; published 3 January 2018)

We study theoretically the detection of the topological phase transition occurring in Rashba nanowires with proximity-induced superconductivity using a quantum dot. The bulk states lowest in energy of such a nanowire have a spin polarization parallel or antiparallel to the applied magnetic field in the topological or trivial phase, respectively. We show that this property can be probed by the quantum dot created at the end of the nanowire by external gates. By tuning one of the two spin-split levels of the quantum dot to be in resonance with nanowire bulk states, one can detect the spin polarization of the lowest band via transport measurement. This allows one to determine the topological phase of the Rashba nanowire independently of the presence of Majorana bound states.

DOI: [10.1103/PhysRevB.97.045404](https://doi.org/10.1103/PhysRevB.97.045404)**I. INTRODUCTION**

Due to their possible applications for topological quantum computation [1,2], topological phases are one of the most studied topics currently in condensed-matter physics. Such phases appear in various systems, but most studies focus on localized zero-energy modes, i.e., Majorana bound states (MBSs) [3–34]. One of the most promising systems are semiconducting Rashba nanowires (NWs) brought into proximity with an *s*-wave superconductor and subjected to an external magnetic field. In recent years, such systems were extensively studied experimentally [35–40]. It is common to tune between the trivial and topological phase by changing external parameters such as the chemical potential or the magnetic field. Experimentally, the presence of the topological phase is generally probed in transport measurements by searching for a zero-bias conductance peak generated by the MBSs. Unfortunately, this peak is far from being an unambiguous signature of a MBS and can come from other phenomena such as Andreev bound states, weak antilocalization, disorder, or Kondo resonances [41–49]. It has been shown recently that the bulk states of such systems also carry signatures of the topological phase [50–52]. Indeed, the spin polarization along the externally applied magnetic field depends on the topological phase of the system [50]. In particular, the spin projection of the lowest electron (hole) band is negative (positive) in the trivial phase, whereas it is opposite in the topological phase. This signature is quite universal because it is also present in multisubband systems and is robust against any kinds of weak, static, or magnetic disorder [50].

In this work, we focus on a detection scheme using a quantum dot within the same Rashba NW (see Fig. 1) [39,53–69]. The proximity-induced superconductivity is induced only in one section of the NW that will be referred to as the topological nanowire (TNW) in the rest of the paper. The section of the NW not covered by the superconductor, referred to as the nontopological section, is used to create the quantum dot by external gates [39]. The dot levels are spin split by the external magnetic field applied along the NW. Using a gate, we can move the dot levels and align one of these spin-split

states with the lowest-in-energy bulk band of the TNW that we aim to probe. If the band and the dot level have the same spin polarization, a current flows. Otherwise, the current is strongly suppressed. By changing the external parameters, we can tune between the trivial and topological phases of the TNW, inducing a reversal of the spin polarization of the lowest bands and, thus, switching current on and off through a particular dot level. Our central result is the signature of topological phase transition in the differential conductance, obtained numerically by using the Keldysh formalism, as a function of voltage bias and gate voltage on the quantum dot in the topological and trivial phases of the TNW.

The paper is organized as follows. In Sec. II, we present our model. In Secs. III and IV, we explain the protocol of measurement and show the results for the differential conductance. Finally, we conclude in Sec. V.

II. MODEL

We consider a one-dimensional Rashba NW aligned along the *x* axis brought partially into contact with an *s*-wave superconductor in the presence of an external magnetic field applied in the *x* direction; see Fig. 1. The NW is divided into two sections. The TNW is coupled to the superconductor. The nontopological section hosts a quantum dot and is coupled via tunneling amplitudes \hat{t}_L to a normal-metal lead. By changing the applied bias voltage, V_{bias} , measured with respect to the chemical potential of the grounded wire, one induces an electrical current through the NW. The Hamiltonian of the total system, $\hat{H} = \hat{H}_W + \hat{H}_L + \hat{H}_T(t)$, where the Hamiltonian describing the NW is written in the Nambu representation of the tight-binding model,

$$\begin{aligned} \hat{H}_W = & \sum_{j=1}^N \tilde{\psi}_j^\dagger [-\mu_j \tau_z + \Delta_{s,j} \tau_x + \Delta_z \sigma_x] \tilde{\psi}_j \\ & + \sum_{j=1}^{N-1} \tilde{\psi}_{j+1}^\dagger [-\tilde{t} - i\tilde{\alpha}_j \sigma_y] \tau_z \tilde{\psi}_j + \text{H.c.}, \end{aligned} \quad (1)$$

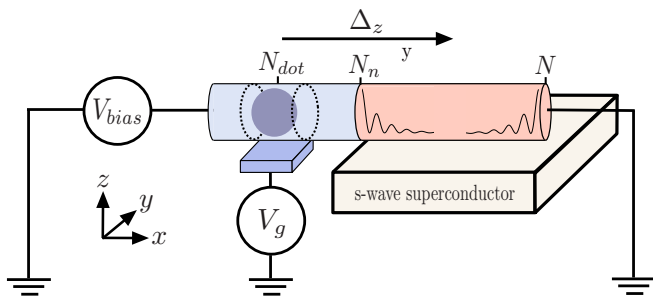


FIG. 1. The system consists of a semiconducting NW aligned along the x axis with Rashba SOI and partially coupled to an s -wave superconductor and subjected to an external magnetic field along the x axis giving rise to a Zeeman energy Δ_z . The part of the NW in contact with the superconductor (red part of the cylinder) is the TNW and can host MBSs (black curves) at its ends. The nontopological section of the NW (light blue part of the cylinder) is used to create a quantum dot (dark blue circle) by an external gate V_g . The NW is grounded and connected to a normal-metal lead with a bias V_{bias} allowing one to perform transport measurement.

with $\tilde{\psi}_j = (\psi_{j,\uparrow}^\dagger, \psi_{j,\downarrow}^\dagger, \psi_{j,\downarrow}, -\psi_{j,\uparrow})$. The operator $\psi_{j\sigma}^\dagger$ creates an electron with spin σ at site j of the chain with N sites. The Pauli matrices σ_μ (τ_μ), $\mu = x, y, z$, act in spin (particle-hole) space. Here, \tilde{t} is an effective hopping amplitude, Δ_z is the Zeeman energy, and $\tilde{\alpha}_j$ sets the strength of spin-orbit interaction (SOI). In order to model a realistic setup, we choose different strengths of $\tilde{\alpha}_j$ for the nontopological section ($\tilde{\alpha}_{nt}$) and for the TNW ($\tilde{\alpha}_t$) as the superconductor attached to the TNW is believed to strongly enhance the SOI strength [70]. The chemical potential μ_j is defined to be μ_t for $j \geq N_n$ (i.e., in the TNW), μ_{nt} for $j < N_{\text{dot}} - L_d/2$ and $N_{\text{dot}} + L_d/2 < j < N_n$ (i.e., in the nontopological section of NW *excluding* the dot), and μ_{dot} for $N_{\text{dot}} - L_d/2 \leq j \leq N_{\text{dot}} + L_d/2$ which defines the quantum dot. Here, the center of the quantum dot of size L_d is at position N_{dot} and the chemical potential μ_{dot} is controlled by the external gate V_g . For convenience, we have chosen a step function in the chemical potential to create the dot. We have checked that the shape of the confinement potential does not matter for the results discussed below. We measure energy in units of the effective hopping, $\tilde{t} = 1$. The superconducting pairing amplitude $\Delta_{s,j}$ is set to zero (Δ_s) in the nontopological section (TNW). The bare retarded Green function encoding the properties of the nanowire reads in frequency space $\tilde{G}_0^R(\omega) = (\omega + i\delta - \tilde{H}_W)^{-1}$, with $\delta > 0$ an infinitesimal needed to invert the matrix properly.

The normal-metallic lead is described by the Hamiltonian $\tilde{H}_L = \sum_{k,\sigma} \xi_k \Psi_{k,\sigma}^\dagger \Psi_{k,\sigma}$, with $\xi_k = k^2/2m - \mu_s$ and $\Psi_{k,\sigma}$ being the annihilation operator of an electron in the lead with spin σ and momentum k . The tunneling Hamiltonian between the lead and NW is written as $\tilde{H}_T(t) = \sum_k \tilde{\Psi}_k^\dagger \tilde{t}_L(t) \tilde{\psi}_{j=1} + \text{H.c.}$, where $\tilde{\Psi}_k^\dagger$ ($\tilde{\psi}_{j=1}$) corresponds to the Nambu spinor composed of electron operators of the lead (of the left end of the NW) and t denotes the time. The voltage difference between the lead and the substrate is included in the tunneling parameter via a Peierls substitution, $\tilde{t}_L(t) = \hat{t}_L \tau_z e^{i\tau_z V_{\text{bias}} t}$. The total Green function of the system in the Nambu-Keldysh space can be expressed in frequency domain as $\hat{G}^{-1}(\omega) = \hat{G}_0^{-1}(\omega) - \hat{\Sigma}(\omega)$,

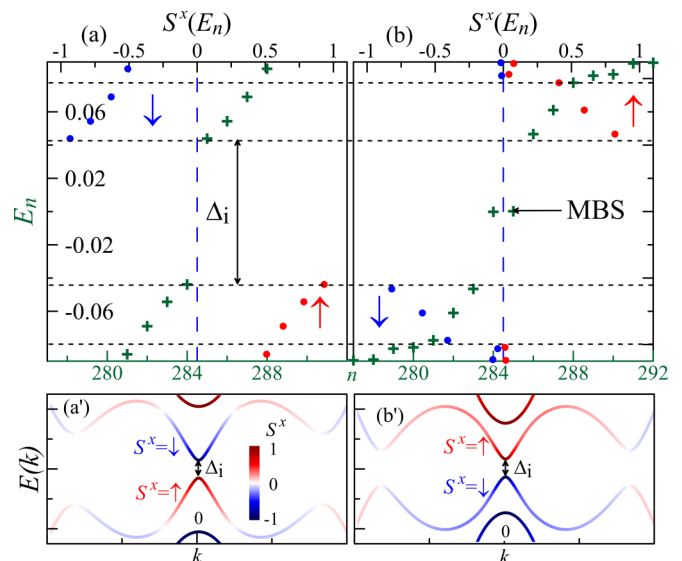


FIG. 2. Energy spectrum of the TNW (green crosses) and the spin polarization S^x (blue and red dots) found in the tight-binding model with $N = 142$ in (a) the trivial and (b) the topological phase. In the continuum model, we present results for the same set of parameters in (a') the trivial and (b') the topological phase. The red and blue colors stand for the spin-up and -down polarization along the x axis, respectively. For both models, one can clearly see the reversal of the spin polarization of the lowest bulk band as one goes through the topological phase transition. The parameters are chosen as follows: $\mu_t = -2$, $\tilde{\alpha}_t = 0.5$, $\Delta_z = 0.12$. We keep the topological gap Δ_i to be the same in the topological ($\Delta_s = 0.08$) and trivial ($\Delta_s = 0.16$) phases. This choice of parameters corresponds to $\Delta_{s,z}$ being of the order of 0.1–0.2 meV, while the SOI energy is around 0.2–0.3 meV.

where \hat{G}_0 is the Green function of the NW and $\hat{\Sigma}(\omega)$ is the self-energy of the lead encoding all its properties as well as the tunneling rate between the lead and the NW, $\Gamma_L = \pi \nu_F |\hat{t}_L|^2$, where ν_F is the density of states per spin of the lead at the Fermi energy of the lead. By calculating the partition function in the Keldysh formalism (see Appendix A), we can extract the current flowing through the whole system,

$$I_c = \frac{e}{2\hbar} \text{Tr} \left\{ \tau_z \int_{-\infty}^{+\infty} \frac{d\omega}{2\pi} \text{Re} [\tilde{G}^R(\omega) \tilde{\Sigma}^K(\omega) + \tilde{G}^K(\omega) \tilde{\Sigma}^A(\omega)] \right\}, \quad (2)$$

where K and A stand for the Keldysh and advanced component of the Green function and of the self-energy in the Keldysh formalism [71–74].

III. MEASUREMENT PROTOCOL

The spin polarization along the applied magnetic field of the lowest-energy bands of the TNW carries information about the topological phase transition [50], where the spin polarization of a given eigenstate is defined as $\mathbf{S}_n = \sum_{j=1}^N \Phi_n^\dagger(j) \boldsymbol{\sigma} \Phi_n(j)$, with Φ_n the n th eigenvector of the TNW Hamiltonian with energy E_n . The spin polarization can be easily computed numerically from \tilde{H}_W [see Figs. 2(a) and 2(b)] or analytically from the corresponding continuum model [see Figs. 2(a') and

2(b')]. Independent of the approach, we clearly see the reversal of the spin polarization of the lowest bands around $k = 0$ as the system goes through the topological phase transition, close to which the topological gap $\Delta_i = |\Delta_z - \Delta_s|$ is the smallest gap in the system [75].

The main goal of this work is to show how to detect this reversal of the spin polarization and, thus, the transition from trivial to topological phase of the TNW using a spin-split quantum dot within the same nanowire. In Fig. 3, we schematically represent the measurement protocol. The position of the chemical potential of the normal-metallic lead is governed by the bias voltage V_{bias} , measured with respect to the reference potential μ_s of the TNW. The two levels (spin up and spin down) of the quantum dot are tuned by the gate voltage V_g inside the topological gap Δ_i of the TNW, which can be either in a topological or trivial phase. In both phases, one should stay close to the topological phase transition such that the topological gap Δ_i is the smallest gap in the TNW. We note that the magnetic field controls both the topological phase of the TNW and the splitting of quantum-dot levels. Fortunately, we are also able to tune the splitting of the dot levels by changing the length L_{dot} of the quantum dot along the NW. Indeed, if the quantum dot is much larger than the SOI length λ_{so} , the Zeeman energy on the dot is strongly suppressed [76]. In the opposite limit $L_{\text{dot}} \lesssim \lambda_{so}$, the Zeeman energy starts to dominate and can already substantially split the two spin levels on the dot. By choosing a proper dot size, we can reach the configurations shown in Fig. 3 with two dot levels inside the bulk gap of the TNW.

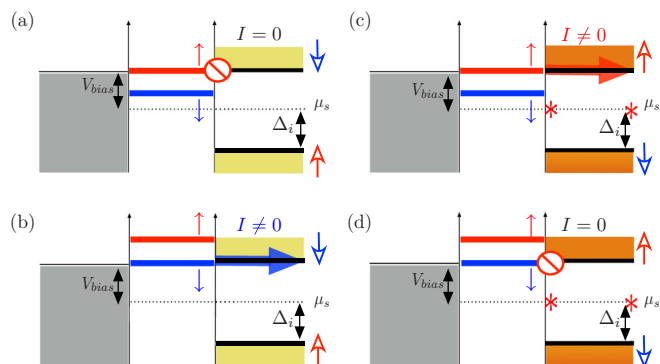


FIG. 3. Measurement protocol. The left part (gray) corresponds to the normal-metallic lead, the middle part corresponds to the quantum dot with the two levels representing spin-up (red) and spin-down (blue) states, and the right part corresponds to the TNW that is either (a),(b) in the trivial phase (light yellow) or (c),(d) in the topological phase (orange). In the latter case, there is a MBS (red star) at each end. We work in the regime close to the topological phase transition, so the topological gap Δ_i is the smallest gap of the system. Note that, for simplicity, only the electron dot levels are drawn here. In the Nambu basis, two hole levels are exactly at opposite energies. By tuning the levels of the dot by V_g , one can align them with the lowest bulk states of the TNW and thus probe the spin polarization of these states. If the spin polarizations of the dot level (small arrows) and of the bulk state (big arrows) are the same, there is a current I flowing through the system for finite bias V_{bias} , which can be detected as a peak in the differential conductance. If their spin polarizations are opposite, the current is blocked, $I = 0$.

The principle of the measurement is straightforward: the gate V_g allows us to push up or down the spin levels of the dot. When one dot level is energetically aligned with the lowest electron band of the TNW, the electrons can enter and a current flows through the system [see Figs. 3(b) and 3(c)], provided the spin polarization of the dot level and the band are the same. However, if the spin polarization of the dot level is opposite to the one of the band [see Figs. 3(a) and 3(d)], the electrons cannot enter in the TNW, leading to no contributions for the transport current. Therefore, if the system is in the trivial (topological) phase, the current flowing through the spin-down (spin-up) dot level should be finite and the current flowing through the spin-up (spin-down) dot level will be strongly suppressed.

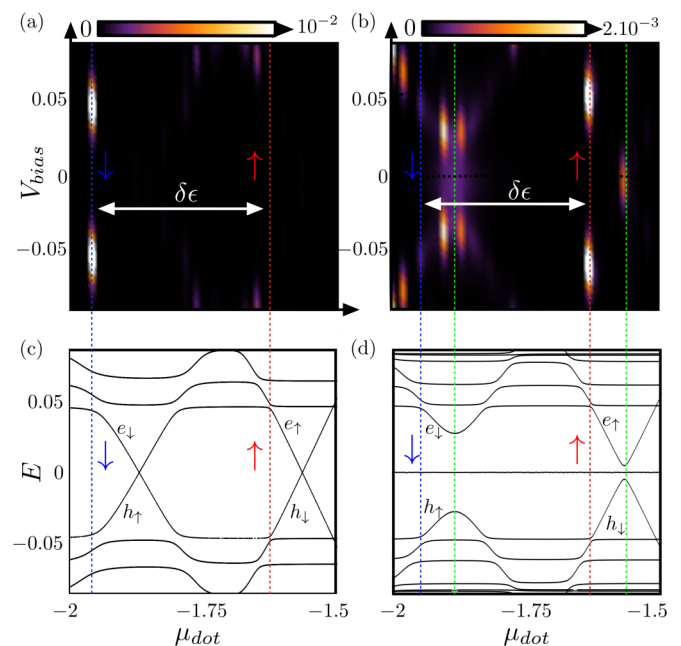


FIG. 4. Differential conductance dI_c/dV_{bias} as a function of μ_{dot} and the bias V_{bias} (in units of e^2/h) when the TNW is (a) in the trivial phase with $\Delta_s = 0.16$ and (b) in the topological phase with $\Delta_s = 0.08$ (these configurations correspond to the ones presented in Fig. 2). (c),(d) The corresponding energy spectrum of the system consisting of the dot and the TNW. The blue (red) line corresponds to the configuration in which the spin-down (-up) level of the dot is aligned with the lowest electron band. The green line correspond to the alignment of dot levels with the MBSs. Indeed, peaks in dI_c/dV_{bias} appear if the bulk and dot levels of the same spin polarization are aligned, which allows one to distinguish between topological and trivial phases. In both phases, the same shift of chemical potential on the dot, $\delta\epsilon \approx 0.3$, is required to tune the setup from the configuration in which the bulk states (or the MBS) are aligned in energy with the spin-up dot level to one in which they are aligned with the spin-down dot level. We note that in the topological phase (b), $\delta\epsilon$ can be read out as the energy distance between two near-zero-energy MBS resonances (distance between green lines). Subsequently, this value of $\delta\epsilon$ can be used to determine the position of the missing peak at the edge of the bulk bands ($V_{\text{bias}} \approx \pm\Delta_i$) in the dI_c/dV_{bias} signal (distance between blue and red lines). The parameters of the system are $\Delta_z = 0.12$, $N = 150$, $N_n = 9$, $N_{\text{dot}} = 5$, $L_d = 3$, $\tilde{\alpha}_{nt} = 0.01$, $\tilde{\alpha}_t = 0.5$, $\mu_t = -2$, $\mu_{nt} = -2.37$, $\Gamma_L = 0.02$, and $k_B T = 1/200$ [77].

IV. SIGNAL IN DIFFERENTIAL CONDUCTANCE

Next, we confirm by numerical simulations that the topological phase transition can be detected in transport measurements. As an example, we drive the system through the topological phase transition by changing the superconducting pairing amplitude such that the splitting of the dot levels stays the same. In Fig. 4, we plot the differential conductance dI_c/dV_{bias} as a function of the chemical potential of the dot, μ_{dot} , and the bias in the lead, V_{bias} . For convenience, we also show the corresponding band structure as a function of μ_{dot} in order to demonstrate that the features in the differential conductance correspond exactly to the point where the dot levels are tuned to be aligned with the lowest TNW electron bands of the same spin polarization. Experimentally, the superconducting pairing amplitude is constant and one tunes the Zeeman field to reach the topological phase; see Fig. 5. In this case, by changing the magnetic field, one also changes the splitting between the dot levels, meaning that $\delta\epsilon'$ (trivial phase) is much smaller than $\delta\epsilon$ (topological phase). We find similar features as before (see Fig. 5), which clearly show the differences in the differential conductance between the topological and trivial phases. However, for very small values of external field, extra features in the gap may appear due to crossing of different dot levels (see Appendix B). It is important to note that the parameter values chosen in Figs. 4 and 5 correspond to the ones observed in the experiments [39].

The strength of the current depends on the effective tunneling between the dot and the TNW, and, thus, on the distance between them. Generally, the effective tunneling is given by the overlap of their wave functions. Due to the presence of SOI, the

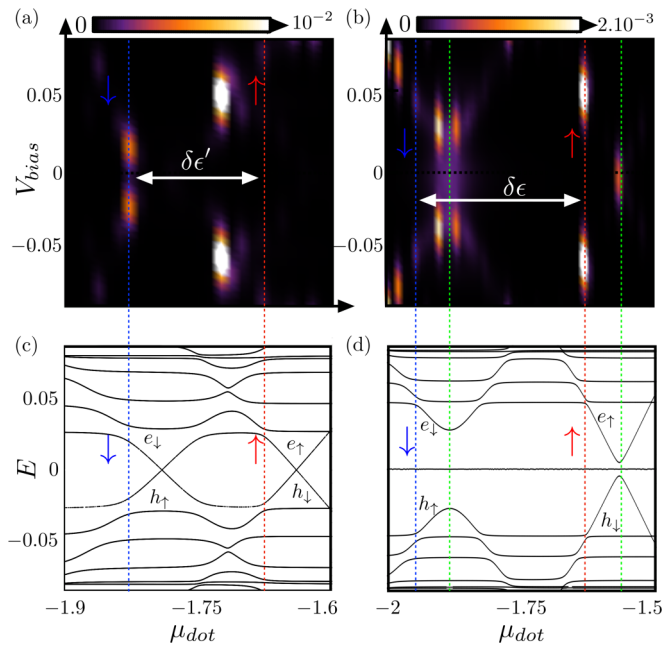


FIG. 5. The same as in Fig. 4, except that $\Delta_s = 0.08$ is kept constant and the topological phase transition is reached by tuning the magnetic field such that (a) $\Delta_z = 0.06$ in the trivial phase and (b) $\Delta_z = 0.12$ in the topological phase. As a result, $\delta\epsilon' < \delta\epsilon$. Again, the reversal of spin polarization can be detected in transport measurements.

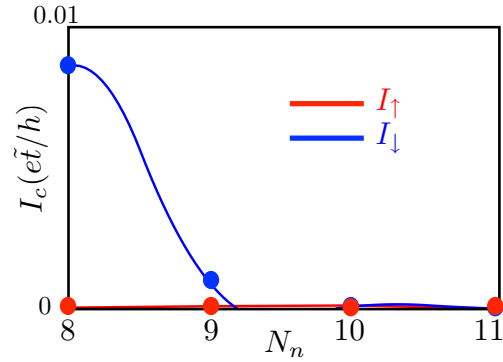


FIG. 6. The current I_c as a function of the distance $N_n - N_{\text{dot}}$ between the center of the dot N_{dot} (kept constant) and the TNW N_n . The system is in the trivial phase and the parameters are the same as in Fig. 4(a). The bias voltage is fixed at the lowest electron bulk level of the TNW, $V_{\text{bias}} = 0.05$. The gate voltage V_g is tuned such that either the spin-up dot level with the corresponding current I_{\uparrow} (red line, $\mu_{\text{dot}} = -1.64$) or spin-down dot level with the corresponding current I_{\downarrow} (blue line, $\mu_{\text{dot}} = -1.94$) matches the lowest electron bulk level. Even if, due to finite SOI, the current through the dot levels with opposite spin polarization is not exactly zero, the contrast between the two currents is substantial, i.e., $I_{\downarrow} \gg I_{\uparrow}$.

local spin polarization rotates in the xz plane as a function of the position x and, in principle, can affect our detection scheme [65]. We have checked that the signal we get is mainly due to the spin polarization of the band and not due to an effective spin filtering coming from the rotation of the polarization axis. In Fig. 6, the system is in the trivial phase. The current through the spin-up level of the dot I_{\uparrow} stays negligibly small no matter what the distance is between the dot and the TNW. The current through the spin-down level I_{\downarrow} is always finite and shows an exponential decay as the distance is increased. We note that there is no oscillatory behavior of the current; thus, the main signal is coming from the spin polarization of the bulk bands. The contrast between currents through two oppositely spin-split dot levels is substantial enough to use them as a detector of spin polarization and, thus, of the topological phase transition in the TNW. Finally, we note that by changing the strength of the magnetic field, the overlap between the dot and the TNW wave functions also changes, which affects the current.

V. CONCLUSION

We have shown that the topological phase of a TNW can be detected by measuring the current flowing between a spin-split quantum-dot level and the lowest-energy band of the TNW. The spin polarization of the lowest bands of the TNW reverses as the TNW is driven through the topological phase transition. As a result, the dot level serves as a spin filter and the current through the spin-up (-down) level is finite only in the topological (trivial) phase, providing a clear experimental signature that can serve as an alternative way to detect the topological phase in TNWs independent of MBSs. Finally, we note that a quantum dot is just a particular realization of a spin probe to detect the bulk spin inversion due to the topological phase transition;

alternatively, the same goal can be achieved by making use of spin-polarized scanning tunneling microscopy (STM) [78,79].

ACKNOWLEDGMENTS

We acknowledge helpful discussions with M. Deng, A. Baumgartner, C. Juenger, and P. Makk. This work was supported by the Swiss National Science Foundation and NCCR QSIT.

APPENDIX A: DETAILS OF THE CURRENT CALCULATION IN THE KELDYSH FORMALISM

The voltage difference between the tip and the substrate is included in the tunneling amplitude via a Peierls substitution, $\tilde{t}_L(t) = \hat{t}_L \tau_z e^{i\tau_z V_{\text{bias}} t}$. The bare Green function encoding the properties of the nanowire reads $\tilde{G}_0^{ss'}(t, t') = -i \langle T_C \{ \tilde{\psi}^s(t) \tilde{\psi}^{s'\dagger}(t') \} \rangle_0$, where T_C is the time-ordering operator along the Keldysh contour with s, s' labeling the branches and $\tilde{\psi} = (\tilde{\psi}_{j=1}, \dots, \tilde{\psi}_{j=N})$. The total Green function of the system reads $\tilde{G}^{ss'}(t, t') = -i \langle T_C \{ S(\infty) \tilde{\psi}^s(t) \tilde{\psi}^{s'\dagger}(t') \} \rangle_0$, where the evolution operator along the contour $S(\infty) = T_C \exp\{-i \int_{-\infty}^{+\infty} dt \sum_{s=+,-} \eta_z^{ss} \tilde{H}_T^s(t)\}$, and η_z is the z -Pauli matrix in the Keldysh space. As \tilde{H} is quadratic in the lead degrees of freedom, the evolution operator can be easily averaged over them,

$$\langle S(\infty) \rangle_{\text{leads}} = T_C \exp \left[-i \int_C dt_1 dt_2 \hat{\psi}^\dagger(t_1) \hat{\Sigma}_L(t_1, t_2) \hat{\psi}(t_2) \right], \quad (\text{A1})$$

where we introduce the spinor $\hat{\psi}$ in the Nambu-Keldysh space. The self-energy associated with the lead can be written as $[\hat{\Sigma}_L(t_1, t_2)]_{ii} = \hat{\Sigma}_{i,L}(t_1, t_2)$, where all the components are zero except at the site $i = 1$ where the lead is attached to the NW,

$$\hat{\Sigma}_{i,L}(t_1, t_2) = [\hat{t}_L^\dagger(t_1) \otimes \eta_z] \hat{g}_L(t_1 - t_2) [\eta_z \otimes \tilde{t}_L(t_2)]. \quad (\text{A2})$$

Here, $\hat{\Sigma}_L, \hat{g}_L$ are matrices in Nambu-Keldysh space, with $\hat{g}_L(t - t')$ the Green function of electrons in the lead. In the literature, they are typically given in the frequency domain: $\hat{g}_L^{R/A}(\omega) = \mp i \pi v_F$ and $\hat{g}_L^K(\omega) = [1 - 2f(\omega)][\hat{g}_L^R(\omega) - \hat{g}_L^A(\omega)]$. The superscripts R, A, K correspond to the components in the rotated Keldysh space. The self-energy in the frequency domain can be calculated easily by inserting these functions into Eq. (A2) and performing a Fourier transform, leading to

$$\begin{aligned} \tilde{\Sigma}_L^{A/R}(\omega) &= \pm i \Gamma_L, \\ \tilde{\Sigma}_L^K(\omega) &= -2i \Gamma_L \begin{pmatrix} \tanh(\beta\omega_-/2) & 0 \\ 0 & \tanh(\beta\omega_+/2) \end{pmatrix}, \end{aligned} \quad (\text{A3})$$

where $\omega_\pm = \omega \pm V_{\text{bias}}$ and $\Gamma_L = \pi v_F |\hat{t}_L|^2$ is the tunneling rate between the NW and the lead, and $\beta = 1/k_B T$ with T the temperature of the electrons in the lead. The Green function \tilde{G} remains to be determined. To do this, we write the Dyson equation in the frequency domain and we obtain the various

components of \tilde{G} in the rotated Keldysh space,

$$\tilde{G}^{R/A}(\omega)^{-1} = \tilde{G}_0^{R/A}(\omega)^{-1} - \tilde{\Sigma}_L^{R/A}(\omega), \quad (\text{A4})$$

$$\tilde{G}^K(\omega) = \tilde{G}^R(\omega) \tilde{\Sigma}_L^K(\omega) \tilde{G}^A(\omega), \quad (\text{A5})$$

with $\tilde{G}_0^{R/A}(\omega) = (\omega \pm i\delta - \tilde{H}_W)^{-1}$. The current between the NW and the lead can be calculated via the change in the charge density $\frac{\partial \rho}{\partial t} = \frac{1}{i} [\rho, \tilde{H}]$, leading to

$$I(t) = \frac{i}{2} \left[\sum_k \tilde{\Psi}_k^\dagger \tau_z \tilde{\Psi}_k, \tilde{H}_T(t) \right] = \frac{i}{2} \sum_k \tilde{\Psi}_k^\dagger \tau_z \tilde{t}_L(t) \tilde{\psi}_{j=1}. \quad (\text{A6})$$

To compute it, it is convenient to introduce counting fields $\gamma(t)$, which appear in the tunneling amplitudes as $\tilde{t}_L(t) \rightarrow \tilde{t}_L(t) e^{i\eta_z \otimes \tau_z \gamma(t)/2}$. The average current from the nanowire into the lead can then be calculated as the first derivative of the Keldysh partition function,

$$I_c = \langle I \rangle = i \frac{1}{Z[0]} \left. \frac{\delta Z[\gamma]}{\delta \gamma(t)} \right|_{\gamma=0}, \quad (\text{A7})$$

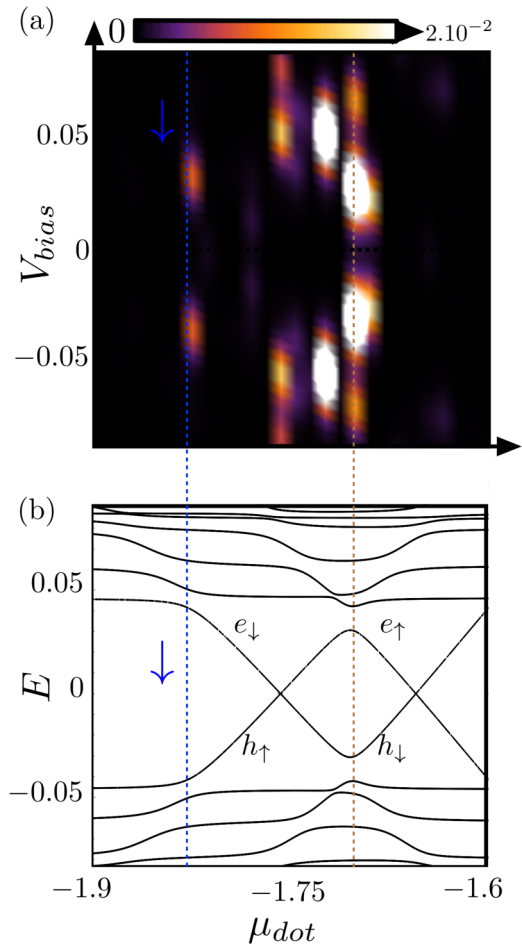


FIG. 7. The same as in Fig. 5(a). The system is in the trivial phase with $\Delta_z = 0.04$. The anticrossings between electron and hole levels of the quantum dot inside the bulk gap of the TNW lead to extra features inside the bulk gap (brown dashed line).

where $Z[\gamma] = \langle S(\infty, \gamma) \rangle_0$ and $S(\infty, \gamma)$ is the evolution operator in which the counting fields were introduced. After taking the derivative and performing a Fourier transform to go to the frequency domain, we can write the average current in terms of the advanced, retarded, and Keldysh components by taking the trace over the Keldysh space, and get

$$I_c = \frac{e}{2\hbar} \text{Tr} \left\{ \tau_z \int_{-\infty}^{+\infty} \frac{d\omega}{2\pi} \text{Re} [\tilde{G}^R(\omega) \tilde{\Sigma}^K(\omega) + \tilde{G}^K(\omega) \tilde{\Sigma}^A(\omega)] \right\}. \quad (\text{A8})$$

APPENDIX B: dI_c/dV_{bias} AND BAND STRUCTURE FOR SMALL MAGNETIC FIELD

As mentioned in the main text, the Zeeman field not only plays an important role in tuning the TNW into the topological phase, but it also sets the splitting between dot levels. In our study, we have noticed that, for small magnetic field, the dot levels within the superconducting gap can interact with each other and give rise to extra features in the differential conductance inside the bulk gap; see Fig. 7. In this particular configuration, there is a crossing between electron and hole levels inside the bulk gap of the TNW. As a result, one can clearly see an additional feature appearing in transport experiments (brown dashed line).

-
- [1] A. Y. Kitaev, *Ann. Phys.* **303**, 2 (2003).
[2] J. Alicea, *Rep. Prog. Phys.* **75**, 076501 (2012).
[3] L. Fu and C. L. Kane, *Phys. Rev. Lett.* **100**, 096407 (2008).
[4] M. Sato and S. Fujimoto, *Phys. Rev. B* **79**, 094504 (2009).
[5] R. M. Lutchyn, J. D. Sau, and S. Das Sarma, *Phys. Rev. Lett.* **105**, 077001 (2010).
[6] Y. Oreg, G. Refael, and F. von Oppen, *Phys. Rev. Lett.* **105**, 177002 (2010).
[7] J. Alicea, *Phys. Rev. B* **81**, 125318 (2010).
[8] A. C. Potter and P. A. Lee, *Phys. Rev. B* **83**, 094525 (2011).
[9] D. Chevallier, D. Sticlet, P. Simon, and C. Bena, *Phys. Rev. B* **85**, 235307 (2012).
[10] J. Klinovaja, S. Gangadharaiah, and D. Loss, *Phys. Rev. Lett.* **108**, 196804 (2012).
[11] D. Sticlet, C. Bena, and P. Simon, *Phys. Rev. Lett.* **108**, 096802 (2012).
[12] J. Klinovaja, P. Stano, and D. Loss, *Phys. Rev. Lett.* **109**, 236801 (2012).
[13] B. I. Halperin, Y. Oreg, A. Stern, G. Refael, J. Alicea, and F. von Oppen, *Phys. Rev. B* **85**, 144501 (2012).
[14] E. Prada, P. San-Jose, and R. Aguado, *Phys. Rev. B* **86**, 180503 (2012).
[15] F. Dominguez, F. Hassler, and G. Platero, *Phys. Rev. B* **86**, 140503 (2012).
[16] S. Nadj-Perge, I. K. Drozdov, B. A. Bernevig, and A. Yazdani, *Phys. Rev. B* **88**, 020407(R) (2013).
[17] J. Klinovaja, P. Stano, A. Yazdani, and D. Loss, *Phys. Rev. Lett.* **111**, 186805 (2013).
[18] B. Braunecker and P. Simon, *Phys. Rev. Lett.* **111**, 147202 (2013).
[19] M. M. Vazifeh and M. Franz, *Phys. Rev. Lett.* **111**, 206802 (2013).
[20] F. Pientka, L. I. Glazman, and F. von Oppen, *Phys. Rev. B* **88**, 155420 (2013).
[21] S. Nakosai, J. C. Budich, Y. Tanaka, B. Trauzettel, and N. Nagaosa, *Phys. Rev. Lett.* **110**, 117002 (2013).
[22] W. DeGottardi, M. Thakurathi, S. Vishveshwara, and D. Sen, *Phys. Rev. B* **88**, 165111 (2013).
[23] K. Poyhonen, A. Weststrom, J. Rontynen, and T. Ojanen, *Phys. Rev. B* **89**, 115109 (2014).
[24] F. Maier, J. Klinovaja, and D. Loss, *Phys. Rev. B* **90**, 195421 (2014).
[25] L. Weithofer, P. Recher, and T. L. Schmidt, *Phys. Rev. B* **90**, 205416 (2014).
[26] O. Dmytruk, M. Trif, and P. Simon, *Phys. Rev. B* **92**, 245432 (2015).
[27] J. Klinovaja and D. Loss, *Phys. Rev. X* **3**, 011008 (2013).
[28] C. R. Reeg and D. L. Maslov, *Phys. Rev. B* **90**, 024502 (2014).
[29] M. Thakurathi, O. Deb, and D. Sen, *J. Phys.: Condens. Matter* **27**, 275702 (2015).
[30] B. Scharf and I. Žutić, *Phys. Rev. B* **91**, 144505 (2015).
[31] M. Thakurathi, D. Loss, and J. Klinovaja, *Phys. Rev. B* **95**, 155407 (2017).
[32] S. Nadj-Perge, I. K. Drozdov, J. Li, H. Chen, S. Jeon, J. Seo, A. H. MacDonald, B. A. Bernevig, and A. Yazdani, *Science* **346**, 602 (2014).
[33] M. Ruby, F. Pientka, Y. Peng, F. von Oppen, B. W. Heinrich, and K. J. Franke, *Phys. Rev. Lett.* **115**, 197204 (2015).
[34] R. Pawlak, M. Kisiel, J. Klinovaja, T. Meier, S. Kawai, T. Glatzel, D. Loss, and E. Meyer, *npj Quantum Inf.* **2**, 16035 (2016).
[35] V. Mourik, K. Zuo, S. M. Frolov, S. R. Plissard, E. P. A. Bakkers, and L. P. Kouwenhoven, *Science* **336**, 1003 (2012).
[36] H. O. H. Churchill, V. Fatemi, K. Grove-Rasmussen, M. T. Deng, P. Caroff, H. Q. Xu, and C. M. Marcus, *Phys. Rev. B* **87**, 241401(R) (2013).
[37] A. Das, Y. Ronen, Y. Most, Y. Oreg, M. Heiblum, and H. Shtrikman, *Nat. Phys.* **8**, 887 (2012).
[38] L. P. Rokhinson, X. Liu, and J. K. Furdyna, *Nat. Phys.* **8**, 795 (2012).
[39] M. T. Deng, S. Vaitiekenas, E. B. Hansen, J. Danon, M. Leijnse, K. Flensberg, J. Nygard, P. Krogstrup, and C. M. Marcus, *Science* **354**, 1557 (2016).
[40] K. Zuo, V. Mourik, D. B. Szombati, B. Nijholt, D. J. van Woerkom, A. Geresdi, J. Chen, V. P. Ostroukh, A. R. Akhmerov, S. R. Plissard, D. Car, E. P. A. M. Bakkers, D. I. Pikulin, L. P. Kouwenhoven, and S. M. Frolov, *Phys. Rev. Lett.* **119**, 187704 (2017).
[41] J. Liu, A. C. Potter, K. T. Law, and P. A. Lee, *Phys. Rev. Lett.* **109**, 267002 (2012).
[42] G. Kells, D. Meidan, and P. W. Brouwer, *Phys. Rev. B* **86**, 100503(R) (2012).
[43] D. Rainis, L. Trifunovic, J. Klinovaja, and D. Loss, *Phys. Rev. B* **87**, 024515 (2013).
[44] D. Pikulin, J. P. Dahlhaus, M. Wimmer, H. Schomerus, and C. W. J. Beenakker, *New J. Phys.* **14**, 125011 (2012).

- [45] S. Sasaki, S. De Franceschi, J. Elzerman, W. Van der Wiel, M. Eto, S. Tarucha, and L. P. Kouwenhoven, *Nature (London)* **405**, 764 (2000).
- [46] A. R. Akhmerov, J. Nilsson, and C. W. J. Beenakker, *Phys. Rev. Lett.* **102**, 216404 (2009).
- [47] E. J. Lee, X. Jiang, M. Houzet, R. Aguado, C. M. Lieber, and S. De Franceschi, *Nat. Nanotech.* **9**, 79 (2014).
- [48] J. Nilsson, A. R. Akhmerov, and C. W. J. Beenakker, *Phys. Rev. Lett.* **101**, 120403 (2008).
- [49] E. J. H. Lee, X. Jiang, R. Aguado, G. Katsaros, C. M. Lieber, and S. De Franceschi, *Phys. Rev. Lett.* **109**, 186802 (2012).
- [50] P. Szumniak, D. Chevallier, D. Loss, and J. Klinovaja, *Phys. Rev. B* **96**, 041401(R) (2017).
- [51] F. Setiawan, K. Sengupta, I. B. Spielman, and J. D. Sau, *Phys. Rev. Lett.* **115**, 190401 (2015).
- [52] K. Björnson and A. M. Black-Schaffer, *Phys. Rev. B* **89**, 134518 (2014).
- [53] E. Vernek, P. H. Penteado, A. C. Seridonio, and J. C. Egues, *Phys. Rev. B* **89**, 165314 (2014).
- [54] D. E. Liu and H. U. Baranger, *Phys. Rev. B* **84**, 201308(R) (2011).
- [55] M. Leijnse and K. Flensberg, *Phys. Rev. B* **84**, 140501(R) (2011).
- [56] A. Golub, I. Kuzmenko, and Y. Avishai, *Phys. Rev. Lett.* **107**, 176802 (2011).
- [57] W.-J. Gong, S.-F. Zhang, Z.-C. Li, G. Yi, and Y.-S. Zheng, *Phys. Rev. B* **89**, 245413 (2014).
- [58] M. Leijnse, *New J. Phys.* **16**, 015029 (2014).
- [59] B. Zocher and B. Rosenow, *Phys. Rev. Lett.* **111**, 036802 (2013).
- [60] C. Schrade, A. A. Zyuzin, J. Klinovaja, and D. Loss, *Phys. Rev. Lett.* **115**, 237001 (2015).
- [61] D. B. Szombati, S. Nadj-Perge, D. Car, S. R. Plissard, E. P. A. M. Bakkers, and L. P. Kouwenhoven, *Nat. Phys.* **12**, 568 (2016).
- [62] L. S. Ricco, Y. Marques, F. A. Dessotti, R. S. Machado, M. de Souza, and A. C. Seridonio, *Phys. Rev. B* **93**, 165116 (2016).
- [63] F. A. Dessotti, L. S. Ricco, Y. Marques, L. H. Guessi, M. Yoshida, M. S. Figueira, M. de Souza, P. Sodano, and A. C. Seridonio, *Phys. Rev. B* **94**, 125426 (2016).
- [64] C. Schrade, S. Hoffman, and D. Loss, *Phys. Rev. B* **95**, 195421 (2017).
- [65] S. Hoffman, D. Chevallier, D. Loss, and J. Klinovaja, *Phys. Rev. B* **96**, 045440 (2017).
- [66] L. Xu, X.-Q. Li, and Q.-F. Sun, *J. Phys.: Condens. Matter* **29**, 195301 (2017).
- [67] L. H. Guessi, F. A. Dessotti, Y. Marques, L. S. Ricco, G. M. Pereira, P. Menegasso, M. de Souza, and A. C. Seridonio, *Phys. Rev. B* **96**, 041114 (2017).
- [68] E. Prada, R. Aguado, and P. San-Jose, *Phys. Rev. B* **96**, 085418 (2017).
- [69] A. Ptok, A. Kobińska, and T. Domanski, *Phys. Rev. B* **96**, 195430 (2017).
- [70] J. Klinovaja and D. Loss, *Eur. Phys. J. B* **88**, 62 (2015).
- [71] T. Jonckheere, A. Zazunov, K. V. Bayandin, V. Shumeiko, and T. Martin, *Phys. Rev. B* **80**, 184510 (2009).
- [72] D. Chevallier, J. Rech, T. Jonckheere, and T. Martin, *Phys. Rev. B* **83**, 125421 (2011).
- [73] A. Martin-Rodero and A. Levy Yeyati, *Adv. Phys.* **60**, 899 (2011).
- [74] D. Chevallier and J. Klinovaja, *Phys. Rev. B* **94**, 035417 (2016).
- [75] J. Klinovaja and D. Loss, *Phys. Rev. B* **86**, 085408 (2012).
- [76] M. Trif, V. N. Golovach, and D. Loss, *Phys. Rev. B* **77**, 045434 (2008).
- [77] We have checked that our results are robust when we change the tunneling strength and the temperature. Indeed, the transport signature remains clearly visible for a reasonable range of Γ_L that is reachable experimentally (basically the condition $\Gamma_L \ll \delta\epsilon$ has to be fulfilled). The same holds for temperatures up to $k_B T \lesssim 1/100$.
- [78] J. Baranski, A. Kobińska, and T. Domanski, *J. Phys.: Condens. Matter* **29**, 075603 (2017).
- [79] S. Jeon, Y. Xie, J. Li, Z. Wang, B. A. Bernevig, and A. Yazdani, *Science* **358**, 772 (2017).