

Skyrmion robustness in noncentrosymmetric magnets with axial symmetry: The role of anisotropy and tilted magnetic fields

A. O. Leonov^{1,2,*} and I. Kézsmárki^{3,4}¹*Chiral Research Center, Hiroshima University, Higashi-Hiroshima, 739-8526, Japan*²*Department of Chemistry, Faculty of Science, Hiroshima University Kagamiyama, Higashi Hiroshima, Hiroshima 739-8526, Japan*³*Experimental Physics V, Center for Electronic Correlations and Magnetism, University of Augsburg, Augsburg 86135, Germany*⁴*Department of Physics, Budapest University of Technology and Economics and MTA-BME Lendület Magneto-Optical Spectroscopy Research Group, Budapest 1111, Hungary*

(Received 10 August 2017; published 8 December 2017)

We investigate the stability of Néel skyrmions against tilted magnetic fields in polar magnets with uniaxial anisotropy ranging from easy-plane to easy-axis type. We construct the corresponding phase diagrams and investigate the internal structure of skewed skyrmions with displaced cores. We find that moderate easy-plane anisotropy increases the stability range of Néel skyrmions for fields along the symmetry axis, while moderate easy-axis anisotropy enhances their robustness against tilted magnetic fields. We stress that the direction along which the skyrmion cores are shifted depends on the symmetry of the underlying crystal lattice. The cores of Néel skyrmions, realized in polar magnets with C_{nv} symmetry, are displaced either along or opposite to the off-axis (in-plane) component of the magnetic field depending on the rotation sense of the magnetization, dictated by the sign of the Dzyaloshinskii constant. The core shift of antiskyrmions, present in noncentrosymmetric magnets with D_{2d} symmetry, depends on the in-plane orientation of the magnetic field and can be parallel, antiparallel, or perpendicular to it. We argue that the role of anisotropy in magnets with axially symmetric crystal structure is different from that in cubic helimagnets. Our results can be applied to address recent experiments on polar magnets with C_{3v} symmetry, GaV_4S_8 and GaV_4Se_8 , and $\text{Mn}_{1.4}\text{Pt}_{0.9}\text{Pd}_{0.1}\text{Sn}$ with D_{2d} symmetry.

DOI: [10.1103/PhysRevB.96.214413](https://doi.org/10.1103/PhysRevB.96.214413)

I. INTRODUCTION

In magnetic compounds lacking inversion symmetry, the underlying crystal structure induces a specific asymmetric exchange coupling, the so-called Dzyaloshinskii-Moriya interaction (DMI), which can stabilize long-period spatial modulations of the magnetization with a fixed rotation sense [1,2]. Within a continuum approximation for magnetic properties, the DMI is expressed by inhomogeneous invariants involving first derivatives of the magnetization \mathbf{M} with respect to the spatial coordinates:

$$\mathcal{L}_{i,j}^{(k)} = M_i \frac{\partial M_j}{\partial x_k} - M_j \frac{\partial M_i}{\partial x_k}. \quad (1)$$

Depending on the crystal symmetry, certain combinations of these Lifshitz invariants (LI) can contribute to the magnetic energy of the material [3].

In the last few years, a renewed interest in noncentrosymmetric magnets has been inspired by the discovery of two-dimensional localized modulations, commonly called magnetic skyrmions [4–6]. Recently, skyrmion lattice states (SkL) [5,7] and isolated skyrmions (IS) [8,9] were discovered in bulk crystals of noncentrosymmetric magnets near the magnetic ordering temperatures [10–12] and in nanostructures with confined geometries over larger temperature regions [5,7,13,14]. The small size, topological protection, and easy manipulation of skyrmions by electric fields and currents [15–17] generated enormous interest in their applications in information storage and processing [18,19].

The DMI provides not only a unique stabilization mechanism [4], protecting magnetic skyrmions from radial instability, but also governs their internal structure. In Ref. [3], by Bogdanov and Yablonskii, three distinct types of skyrmions and two types of antiskyrmions (having opposite topological charge as compared with skyrmions) were predicted to occur in noncentrosymmetric magnets with different crystallographic symmetries.

The first observed type of skyrmions is called *Bloch* skyrmions, whose internal structure is schematically shown in Fig. 1(a). It is the most ubiquitous skyrmionic archetype observed in materials with B20 structure like MnSi [10], FeGe [11], or Cu_2OSeO_3 [20]. The magnetization in Bloch skyrmions is perpendicular to the radial direction. Since the magnetic energy term corresponding to the DMI is reduced to the isotropic form $w_{\text{DMI}} = \mathbf{M} \cdot \text{rot}\mathbf{M}$, the axes of Bloch skyrmions in cubic helimagnets always co-align with the applied magnetic field, irrespective of the direction of the field.

Antiskyrmions were recently observed in Mn-Pt-Sn Heusler materials with acentric D_{2d} crystal symmetry [21]. They were shown to exist over a wide temperature interval both as IS and in ordered SkL. Although the antiskyrmions break the cylindrical symmetry and carry a quadrupolar moment of the magnetostatic charges, they are invariant under all symmetry operations of D_{2d} , including the $\bar{4}$ symmetry (fourfold rotation followed by inversion).

Polar magnets with C_{nv} symmetry, such as GaV_4S_8 [12] and GaV_4Se_8 [22,23], host *Néel* skyrmions in which the magnetization rotates radially from the skyrmion center as shown in Fig. 1(b). The helicity angle $\chi = 0$ or $\chi = \pi$, corresponding to the two rotation senses of the magnetization, depends on the sign of the Dzyaloshinskii constant in model (2), described later, and endows the Néel skyrmions

*leonov@hiroshima-u.ac.jp

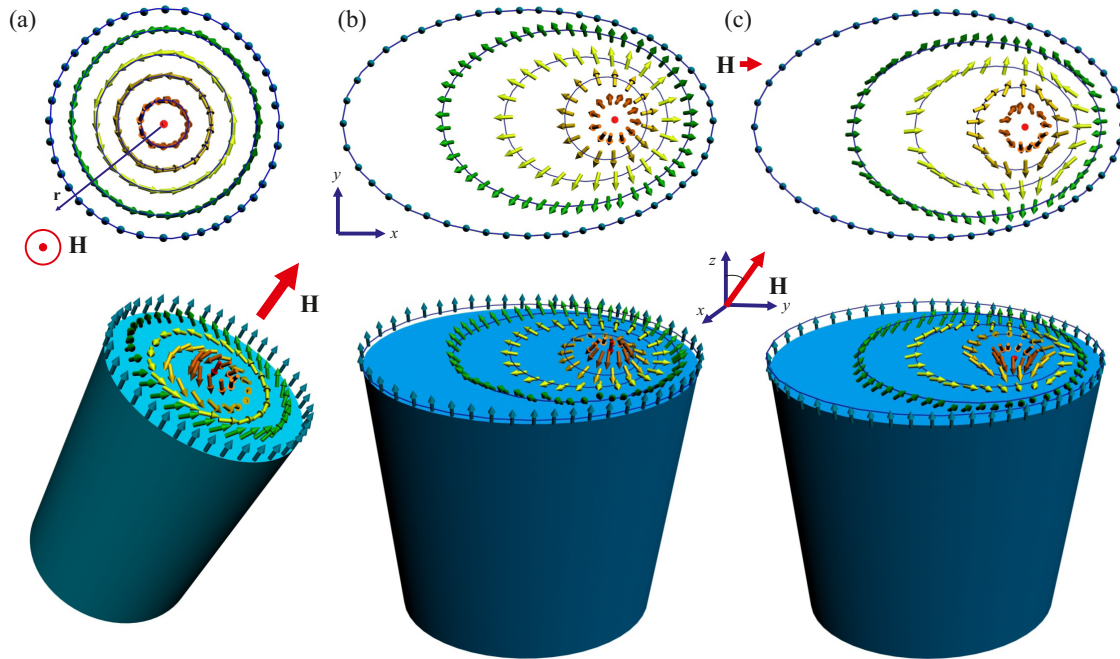


FIG. 1. The spin texture of Bloch skyrmion (a), Néel skyrmion (b), and antiskyrmion (c) in a tilted magnetic field. While the Bloch skyrmions in cubic helimagnets co-align their axes with the field, the Néel skyrmions and antiskyrmions displace their cores and lock their axes to the high-symmetry (polar) axis of the host crystal.

with a magnetic monopole moment on the contrary to Bloch skyrmions with a magnetic toroidal moment [24]. Moreover, Néel skyrmions are dressed with an electric polarization [25,26] and induce internal magnetic charges due to the nonzero divergence of the rotating magnetization vector [4].

In the C_{nv} and D_{2d} symmetry classes investigated here, no Lifshitz invariants are present along the high-symmetry axis, the z direction [3]. Therefore only modulated magnetic structures with wave vectors perpendicular to the z axis are favoured by the DMI. As it will be shown in this work, in magnetic fields tilted with respect to the high-symmetry axis both the Néel skyrmions and antiskyrmions [21] shift their cores with respect to the in-plane component of the field instead of co-aligning their axes with the field as it happens for Bloch skyrmions in cubic helimagnets, the so-called locking of the skyrmion axes.

LI (1) define a set of competing modulated phases in the phase diagrams specific to the different crystallographic classes. For the C_{nv} and D_{2d} symmetry classes, usually only spirals, skyrmions (or antiskyrmions), and collinear spin-structures are identified [12,21]. There is no competing conical state for fields applied along the high-symmetry axis. Although for oblique fields a transverse conical state arises with \mathbf{q} vector perpendicular to the magnetic field [22], but this is fundamentally different from the longitudinal conical state in cubic helimagnets, where the \mathbf{q} vector co-aligns with the field. The lack of the longitudinal conical state may lead to wide stability regions of skyrmions even in bulk materials with C_{nv} and D_{2d} symmetry classes. In contrast, in bulk cubic helimagnets, the longitudinal conical phase is present for arbitrary direction

of the magnetic field and restricts the region of skyrmion stability to a small pocket near the ordering temperatures (A phase) [10,11].

In the present paper, we investigate the robustness of Néel skyrmions with displaced cores in oblique magnetic fields and the role of the uniaxial anisotropy (UA). Lacunar spinels GaV_4S_8 and GaV_4Se_8 [12,22,27] bear uniaxial anisotropy of easy-axis and easy-plane type, respectively, as they undergo a Jahn-Teller transition from a room-temperature cubic structure into a low-temperature rhombohedral polar (C_{3v}) structure [25,26,28]. From the experimental phase diagrams [12,22,23], showing a temperature dependent ratio of h_{c1}/h_{c2} , where h_{c1} is the field of the first-order phase transition between spirals and SkL and h_{c2} is the field of SkL to ferromagnetic state transition, one can conclude that the magnitude of the effective UA varies with temperature (see also Fig. 7). In particular, the magnetic phase diagrams of GaV_4S_8 obtained for different orientations of the magnetic field (see, e.g., Fig. 2 in Ref. [12]) exhibit tricritical points and by their topology resemble the theoretical phase diagrams constructed in Refs. [29,30]. Therefore in the present paper, we construct the phase diagrams (Fig. 6) on the plane spanned by the axial and in-plane components of the magnetic field for both signs and various values of the UA. We show that the easy-axis anisotropy decreases the region of SkL stability and promotes the formation of ISs, whereas the easy-plane anisotropy enhances the SkL stability. We also discuss the internal structure of modulated states and the way how the theoretical phase diagrams could be set up in correspondence with the experimental ones. We also study the deformation of antiskyrmions in oblique magnetic fields, realized in Heusler

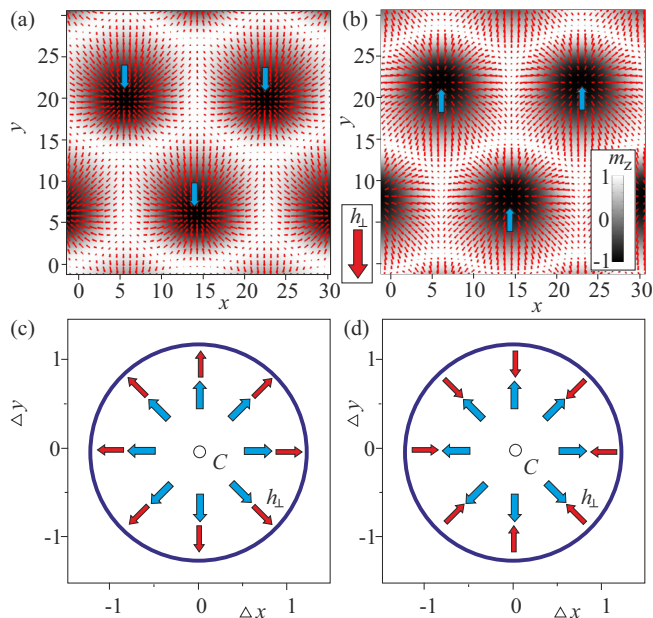


FIG. 2. Néel SkL in an oblique magnetic field in magnets with C_{nv} symmetry, $h = 0.2$, $\alpha = 0.7$. [(a) and (b)] The color plots of the m_z component of the magnetization plotted for two types of Néel skyrmions realized with opposite signs of the Dzyaloshinskii constant D in Eq. (2). In-plane components of the magnetization are shown with thin red arrows. The in-plane projection of the magnetic field h_{\perp} is shown by the thick red arrow and is the same for both cases. h_{\perp} leads either to the parallel (a) or antiparallel (b) shift of the skyrmion cores for two rotation senses of the magnetization, respectively. [(c) and (d)] Displacement of skyrmion centers plotted with respect to the skyrmion centers in a magnetic field with $\alpha = 0$, point C . The radius of the curve shows the magnitude of the core shift. Blue and red arrows show the corresponding directions of the field and core shift in each point of the curve.

compounds with tetragonal crystal structure. This compound family provide a perfect platform for the design of magnetic configurations with variable uniaxial anisotropy [21].

II. THE MODEL

A. The magnetic energy

The magnetic energy density of a noncentrosymmetric ferromagnet with C_{nv} and D_{2d} symmetry can be written as the sum of the exchange, the DMI, Zeeman, and the anisotropy energy density contributions, correspondingly:

$$w = \sum_{i,j} (\partial_i m_j)^2 + w_{\text{DMI}} - \mathbf{m} \cdot \mathbf{h} - k_u m_z^2, \quad (2)$$

where spatial coordinates \mathbf{x} are measured in units of the characteristic length of modulated states $L = A/D$. $A > 0$ is the exchange stiffness, D is the Dzyaloshinskii constant. The unit vector along the magnetization \mathbf{M} is $\mathbf{m} = \mathbf{M}/|\mathbf{M}|$. $\mathbf{h} = \mathbf{H}/H_0$ is the applied magnetic field, $H_0 = D^2/A|\mathbf{M}|$. The magnetic field has a tilt angle α with the z axis, i.e.,

$$h_z = h \cos \alpha, h_{\perp} = h \sin \alpha. \quad (3)$$

The UA $k_u = K_u M^2 A/D^2$. In the case of Néel skyrmions, k_u is the effective uniaxial anisotropy, which includes the intrinsic

uniaxial anisotropy (K_u) and the anisotropy due to the stray field energy [4].

The DMI energy density has the following form:

$$C_{nv} : m_x \partial_x m_z - m_z \partial_x m_x + m_y \partial_y m_z - m_z \partial_y m_y, \\ D_{2d} : m_x \partial_y m_z - m_z \partial_y m_x + m_y \partial_x m_z - m_z \partial_x m_y, \quad (4)$$

where $\partial_x = \partial/\partial x$, $\partial_y = \partial/\partial y$.

In both cases, only modulated phases with the propagation directions perpendicular to the polar axis of C_{nv} or to the tetragonal axis in magnets with D_{2d} symmetry, i.e., in the xy plane of model (2), are favored. Functional (2) includes only the main energy contributions essential to stabilize modulated states and an additional UA. As the main goal of the paper is to investigate the role of UA in the stability regions of skyrmions with shifted cores, we do not take into account other anisotropic contributions. In particular, besides the single-ion type anisotropy, considered here, we neglect the difference in exchange couplings for two sets of bonds present in lacunar spinels GaV_4Se_8 [22] and GaV_4S_8 [12] as well as the exchange anisotropy. Moreover, we do not capture the influence of thermal fluctuations near the ordering temperatures.

B. Energy minimization.

For two-dimensional skyrmions, the Euler-Lagrange equations derived from the energy functional (2) are nonlinear partial differential equations. These equations have been solved by numerical energy minimization procedure using finite-difference discretization on rectangular grids with adjustable grid spacings and periodic boundary conditions. Components of the magnetization vector \mathbf{m} have been evaluated in the knots of the grid, and for the calculation of the energy density (2), we used finite-difference approximation of derivatives with different precision up to eight points as neighbours. To check the stability of the numerical routines, we refined and coarsened the grids from 42×72 points up to 168×288 . For axial fields, we used grid spacings $\Delta_y \approx \Delta_x$ so that grids are approximately square in order to reduce the artificial anisotropy incurred by the discretization. For oblique fields, however, the value of Δ_y/Δ_x differs from unity and allows to follow the elliptical instability of the initially hexagonal skyrmion lattice. The final equilibrium structure for the 2D skyrmion lattice was obtained according to the following iterative procedure of the energy minimization using simulated annealing and a single-step Monte Carlo dynamics with the METROPOLIS algorithm.

(i) The initial configuration of magnetization vectors in the grid knots for Monte Carlo annealing corresponds to the perfectly hexagonal skyrmion lattice obtained for $\alpha = 0$.

(ii) A point (x_n, y_n) on a grid is chosen randomly. Then, the magnetization vector in that point is rotated without change of its length. If the energy change ΔH_k associated with such a rotation is negative, the new orientation is kept.

(iii) However, if the new state has the energy higher than the last one, it is accepted probabilistically. The probability P depends upon the energy and a kinetic cycle temperature T_k :

$$P = \exp\left(-\frac{\Delta H_k}{k_B T_k}\right), \quad (5)$$

where k_B is Boltzmann constant. Together with probability P a random number $R_k \in [0, 1]$ is generated. If $R_k < P$,

the new configuration is accepted otherwise is discarded. Generally speaking, at high temperatures T_k , many states will be accepted, while at low temperatures, the majority of these probabilistic moves will be rejected. Therefore one has to choose appropriate starting temperature for heating cycles to avoid transformation of skyrmion textures into spiral states or angular ferromagnetic phases if for the given parameters skyrmions are metastable solutions.

(iv) The characteristic spacings Δ_x and Δ_y are also adjusted to promote the energy relaxation. The procedure is stopped when no further reduction of energy is observed.

III. RESULTS AND DISCUSSION

A. Chiral modulations in C_{nv} magnets

Three magnetic phases obtained as the solutions of the model (2) can be identified as follows.

(i) *Spirals*. For the case of C_{nv} magnets, the spirals represent cycloids with the rotation plane of the magnetization containing the wave vector \mathbf{q} and the high-symmetry (C_n) axis. For D_{2d} crystals, the type of the spiral depends on the in-plane orientation of the \mathbf{q} vector: it is a helicoid (a Bloch spiral) for $\mathbf{q} \parallel x$ and $\mathbf{q} \parallel y$, while cycloids are formed for diagonal directions as can be discerned in the corresponding structure of the antiskyrmion in Fig. 3. The x and y axes are selected in a way that xz and yz planes are the mirror planes of the D_{2d} symmetry.

(ii) *Skyrmions*. Skyrmions can exist either in the form of a thermodynamically stable SkL (the corresponding regions are red shaded in the phase diagrams of Figs. 5 and 6) or as metastable IS within the stable homogeneous state (the corresponding regions are blue-shaded in Figs. 5 and 6). Isolated Néel skyrmions in bulk systems with C_{nv} have not been experimentally observed yet, although they were reported in thin films with interface-induced DMI [8,30]. Isolated antiskyrmions in bulk Heusler alloys were reported in Ref. [21].

When the magnetic field is parallel with the high-symmetry (C_n) axis, i.e., $h_{\perp} = 0$, the period of the cycloid and its anharmonicity is gradually increased with increasing field. When the magnetic field is perpendicular to the high-symmetry axis, i.e., $h_z = 0$, a transverse conical state emerges, with a uniform magnetization developing parallel to the field, besides the magnetization component rotating in the plane perpendicular to the field. The opening angle of the cone is decreased with increasing field. As the field points in a general oblique angle, the modulated phases are skewed. In particular, skewed cycloids with the \mathbf{q} vectors along y axis, when h_{\perp} is along the x axis, can be expanded by cycloids with magnetization rotating in the yz plane (period of such a cycloid gradually increases with increasing h_z component of the field), plus a transverse component oscillating in the xy plane and a uniform component.

(iii) *Angular homogeneous phases*. The magnetization of these field polarized ferromagnetic phases is tilted away from the z axis in the presence of oblique fields.

B. The internal structure of skewed skyrmions

(i) *Skewed Néel skyrmions*. The shape of the Néel skyrmions in tilted magnetic fields, as shown in Fig. 3, deforms in the

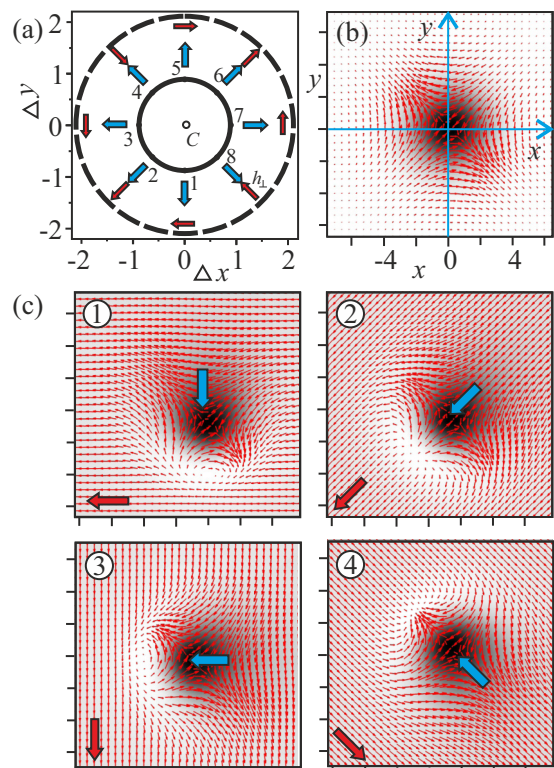


FIG. 3. Isolated antiskyrmions in an oblique magnetic field plotted for magnets with D_{2d} symmetry. (a) Displacement of skyrmion centers plotted for $\alpha = 0.7$ (solid line) and $\alpha = \pi/2$ (dashed line). The magnitude of the field is $h = 0.6$ for both cases. The distance Δ by which the skyrmions shift their cores with respect to the point C is tuned by the value of α . Blue and red arrows in each point of the curve show the directions of the skyrmion shift and the direction of the field, respectively. (b) The spin structure of an isolated antiskyrmion in a field co-aligned with its axis, the $\bar{4}$ axis of the host crystal. The color scale indicates m_z component of the magnetization (the color scale is the same as in Fig. 2). In-plane components of the magnetization are shown with thin red arrows in magnetic fields co-aligned with its core. The x and y axes are selected in a way that xz and yz planes are the mirror planes of the D_{2d} symmetry. Grating period of x and y axes is 2. The point C in (a) is the center of an antiskyrmion. (c) The spin structure of isolated antiskyrmions with displaced cores. The in-plane projection of the magnetic field h_{\perp} is shown by thick red arrows.

following way: the cores of the skyrmions are shifted from the center of the unit cell of the SkL, but the lattice retains the stability against transformation into spirals. Whether the skyrmion centers shift along or opposite to h_{\perp} depends on the sign of the Dzyaloshinskii constant D in Eq. (2): Néel skyrmions with the “in-ward” sense of the magnetization rotation [Fig. 2(a)] have a core displacement along h_{\perp} , whereas Néel skyrmions with the “outward” magnetization rotation [Fig. 2(b)] have a core shift opposite to h_{\perp} . The effect is easily understood, as the in-plane component of the magnetic field h_{\perp} increases the area, where the magnetization points along the field. The corresponding shift of skyrmion cores is marked by blue arrows in Figs. 2(a) and 2(b).

Figures 2(c) and 2(d) show the displacement of skyrmion centers as a function of the orientation of the in-plane field component for $h = 0.2$, $\alpha = 0.7$. The values Δ_x and Δ_y , the

components of the core shift along the two axis, are relatively small as compared with the period of a spiral in zero magnetic field. The displacement of the core is of the same magnitude, irrespective of the orientation of the in-plane component of the field and does not reflect the sixfold symmetry of the SkL unit cell.

In Ref. [31], it was shown that the skewed skyrmions have anisotropic interskyrmion interaction, i.e., the interaction energy between two skyrmions depends on their relative orientation and leads to the distorted triangular lattice. Nevertheless, the skyrmion-skyrmion interaction remains repulsive with the strongest repulsion between skyrmions in the direction where they are elongated [31]. This phenomenon singles out the Néel skyrmions from the Bloch skyrmions in B20 compounds: while Bloch skyrmions orient their cores along the magnetization of the ferromagnetic host phase, skyrmions in magnets with axially symmetric crystal structure experience an orientational confinement, with their cores nearly fixed to the direction of the high-symmetry axis.

Therefore for B20 materials, it is instructive first to make a full analysis of the magnetization processes for homogeneous states [32] and to define the global and local minima of the energy functional (2). Then, the stable (metastable) SkL will orient their axes along the corresponding homogeneous states and form multiple skyrmionic domains with nontrivial topological boundaries between them.

In thin films of B20 materials, the reorientation process of the Bloch skyrmions in the tilted fields is a more delicate issue, leading to an undulated shape of the skyrmion cylinders [33]. Such a skyrmion deformation must minimize, in particular, contributions from so called surface twists, modifying the structure of skyrmions near the surface and even leading to their thermodynamical stability (see Ref. [34] for details), and from the demagnetization effects. In Ref. [35], the process of skyrmion core rotation in tilted magnetic fields has been observed in thin epitaxial films of MnSi. The increase of the angle α results in the effective increase of the film thickness for skyrmions and, thus, in the appearance of the conical phase which is stable for thicker MnSi-films (in accordance with the theoretical phase diagram constructed in Ref. [34]).

(ii) *Skewed antiskyrmions*. In case of the antiskyrmions the core displacement direction depends on the orientation of the in-plane field component h_{\perp} with respect to the coordinate axes. The modulations propagating parallel to these axes are helical, while the modulations propagating along the $\pm 45^{\circ}$ lines are cycloidal [Fig. 3(b)]. The core shift is perpendicular to the field if h_{\perp} is co-aligned with the coordinate axes, i.e., for $h_x = 0, h_y = h_{\perp}$ (or $h_x = h_{\perp}, h_y = 0$), corresponding to points 1,3,5,7 in Figs. 3(a) and 3(c). The core shift occurs along and opposite to the field in points 2, 6 and 4,8 of Figs. 3(a) and 3(c), respectively.

The distance Δ , by which the skyrmion centers are displaced from their original position (point C) in the oblique magnetic field, depends on the value of the field and the angle α : Fig. 3(a) shows two curves for $\alpha = 0.7$ (solid line) and $\alpha = \pi/2$ (dashed line), with $h = 0.6$ in both cases.

C. Fourier components of skewed SkL

The internal structure of the skyrmion lattice can also be characterized by the behavior of the Fourier components in

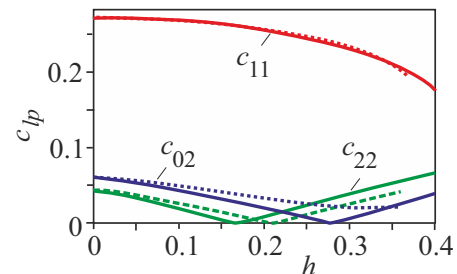


FIG. 4. Coefficients c_{11} (red line), c_{02} (blue line), and c_{22} (green line) of the fast Fourier transform (6) for “stright” skyrmions with $\alpha = 0$ (solid lines) and elongated skyrmions with $\alpha = 0.9$ (dotted lines). See text for details. c_{11} is the amplitude of the fundamental harmonics, while c_{02} and c_{22} are the amplitudes of higher-order harmonics.

oblique magnetic fields. Figure 4 shows field dependence of the coefficients c_{11} (red line), c_{02} (blue line), and c_{22} (green line) for “stright” skyrmions with $\alpha = 0$ (solid lines) and elongated skyrmions with $\alpha = 0.9$ (dotted lines). The Fourier components are introduced according to

$$m_z(x, y) = \sum_{lp} c_{lp} e^{i(lx+py)},$$

$$c_{lp} = \frac{1}{S} \iint m_z(x, y) e^{-i(lx+py)} dx dy, \quad (6)$$

where S is the surface area of the corresponding unit cell for SkL. The “stright” and elongated skyrmions can be distinguished by the behavior of their c_{02} coefficients: for $\alpha = 0.9$, these coefficients never become zero as is the case for $\alpha = 0$.

The coefficients c_{22} and c_{02} for “stright” skyrmions become zero for some values of the field and are small in the field region around $h = 0.2$. In Ref. [36] (see Fig. 10 [36]), it was shown that for the case of B20 magnets at the field $h = 0.2$ the difference between the energy densities of the SkL and the conical phase is minimal. On this ground, it was suggested that the skyrmion lattice is stabilized with respect to the cones exactly around this field value and underlies the phenomenon of A phase [10]. Analysis of the Fourier components (6) may justify the use of the triple- q ansatz in this field interval [10]. Near the transition into the ferromagnetic state, however, the values of higher harmonics become significant and the ansatz in the form of the triple- q becomes incorrect.

D. Phase diagrams of states

By comparing the equilibrium energies of spirals, SkL and polarized FM states, we construct the phase diagrams on the planes (h_{\perp}, h_z) of the field components for different values of the uniaxial anisotropy k_u . The areas of magnetic states corresponding to the global minimum of the energy functional are indicated by different colors.

We start the analysis of the phase diagrams with the $k_u = 0$ case. The SkL is thermodynamically stable within a curvilinear triangle $A-C-D$ (red-shaded region) with vertices $A(0.29, 0.23)$, $D(0, 0.11)$, and $C(0, 0.4)$ [4,29]. The line $A-D$ is the line of the first-order phase transition between spirals and SkL. At the line $A-C$ the SkL transforms into the polarized FM

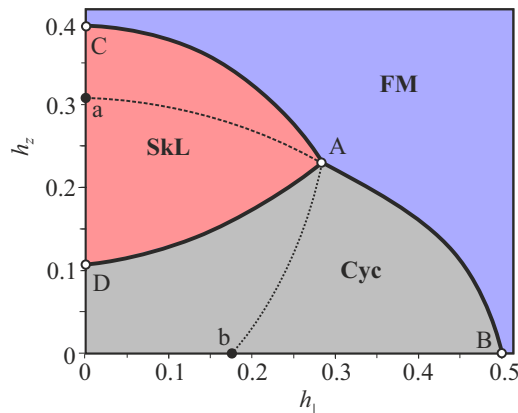


FIG. 5. The phase diagram for model (2) plotted for zero UA $k_u = 0$ on the plane (h_{\perp}, h_z) of the field components. Filled areas indicate the regions of global stability for the SkL (red) and spirals (gray). In the saturated state (blue area), skyrmions exist as isolated objects. Thin dashed line a - A designates the phase transition between the metastable spiral state and the polarized ferromagnetic phase. Thin dotted line b - A is the line of the elliptical instability of the metastable SkL with respect to the spiral state (see text for details).

state whereas at the line b - A (thin dotted line) the metastable SkL undergoes an elliptical instability toward the spiral state (an elliptical instability of ISs was considered in Refs. [30,37]). Therefore the point A is a cusp point in which different lines characterizing different processes joint. The point A also corresponds to the threshold angle α_{\max} of an oblique magnetic field, where the thermodynamically stable SkL state still emerges. As a metastable solution, SkL exists even in a perpendicular magnetic field in the range 0 - b of Fig. 5. For $\alpha > \alpha_{\max}$, only skewed spirals (gray-shaded region) can be observed culminating in a conical phase at the point B [$B(0.5,0)$ for $k_u = 0$]. The analysis of the type of the phase transition between skewed spirals and FM states as observed along the line a - A - B has been done in Ref. [38].

For the *easy-axis* uniaxial anisotropy [$k_u > 0$ in Eq. (2), Fig. 6(a)], the existence range of the skyrmion lattice is the largest for the field co-aligned with the magnetic easy axis (point C in Fig. 6) and decreases with increasing tilting angle α . The angle α_{\max} is a function of the uniaxial anisotropy k_u as shown in Fig. 7(b). Since the skyrmion cores are aligned along the easy axes, therefore, the stronger the anisotropy is, the higher field is needed to shift the skyrmionic cores and the larger α_{\max} can be achieved. At the same time, the UA suppresses the modulated phases. Thus the temperature or UA-dependence of α_{\max} shows a maximum at $k_u = 0.3$, which is realized at $T = 11$ K in GaV_4S_8 .

In Fig. 7(a) for $\alpha = 0$, we plot the ratio h_{c1}/h_{c2} : a red dotted line has been obtained from the theoretical phase diagram in Ref. [29] and has been plotted as a function of k_u (corresponding to upper scale), while the solid black line (with circular markers) is the temperature dependence of h_{c1}/h_{c2} as extracted from the experimental data of Refs. [12,22] for GaV_4S_8 and GaV_4Se_8 in $H \parallel [111]$ (lower scale). By this, we make a correspondence between the experimental phase diagrams obtained for lacunar spinels GaV_4S_8 and GaV_4Se_8 and the theoretical phase diagrams in Fig. 6. Value

$h_{c1}/h_{c2} = 1$ in Fig. 7(a) corresponds to the three-critical point with $k_u^{\text{cr}} = 0.475$ and temperature $T^{\text{cr}} = 9$ K for GaV_4S_8 [12]. For $T < T^{\text{cr}}$, skyrmions are suppressed and only cycloids are observed. For $T < 5$ K ($k_u > 0.617$), only the ferromagnetic state is present in the phase diagram. Thus the increasing UA first suppresses the SkL and eventually the cycloids.

In GaV_4S_8 [12] at the structural transition, the lattice is stretched along one of the four $\langle 111 \rangle$ body diagonals. The four distortion directions correspond to the magnetic easy axes of the four structural domains coexisting below 44 K. The magnetic state in each domain depends on the strength and orientation of the magnetic field with respect to the corresponding easy axis. In Ref. [12], the magnetic field was applied along the following directions in the cubic setting: $\langle 100 \rangle$ ($\alpha = 0.955$), $\langle 110 \rangle$ ($\alpha = 0.615$, $\alpha = \pi/2$), and $\langle 111 \rangle$ ($\alpha = 0$, $\alpha = 1.23$). The experimentally observed $\alpha_{\max} = 1.23$ is slightly larger than the theoretical value in Fig. 7(b), which could be explained, e.g., by the exchange anisotropy contribution or the slight rotation of Néel skyrmions neglected in our theory.

For the *easy-plane* anisotropy [$k_u < 0$ in Eq. (2), Fig. 6(b)], the region of the skyrmion stability is significantly enhanced for $\alpha = 0$. Indeed, it was reported recently in GaV_4Se_8 [22,23] that SkL remains stable down to zero Kelvin. This corroborates with the prediction by Randeria and co-workers as applied for SkL in polar materials with Rashba-type spin-orbit interaction [39].

The angular stability of SkL, however, impairs, as the α_{\max} decreases with k_u as discerned in Fig. 7(d). This is accompanied by the re-entrance phenomenon in some interval of angles α : two successive first-order phase transitions from the spiral state to SkL and back take place with increasing magnetic field. In Fig. 6(b), α_1 corresponds to the point A and signifies the onset of the re-entrant spiral state, α_2 coincides with the farthest point of the SkL stability region and signifies the limiting angle of the tilted field after which the re-entrance phenomenon disappears. According to Fig. 7(d), the largest interval $\Delta\alpha = \alpha_2 - \alpha_1$ is reached for $k_u = 0.3$. No experimental observation of the predicted re-entrance phenomenon has been reported yet.

The values of h_{c1}/h_{c2} extracted from the experimental data on GaV_4Se_8 in Ref. [22] [white circles in Fig. 7(c)] give the values of k_u in the diapason 0.15 – 0.25 . Only the temperature range 11 – 17 K was taken into account since for $T < 11$ K some additional unknown phases appear which complicates the assignment of h_{c1} and h_{c2} . These values slightly differ from the values extracted from Ref. [23] [blue and red circles in Fig. 7(c)]. No new phases below $T < 11$ K have been reported in Ref. [23].

The structure of IS surrounded by the canted ferromagnetic phase (blue-shaded regions in Figs. 5 and 6) was recently studied in Ref. [40]. Such IS has asymmetric magnetic structure and exhibit anisotropic interskyrmion potential due to the intricate domain-wall region, which connects the core of the IS with the embedding canted ferromagnetic phase. In Ref. [31] the shape of isolated skyrmions has been investigated for the field $h \approx 0.4$ and $k_u = 0$ in the units of Eq. (2), i.e., at the boundary between the skyrmion lattice and the homogeneous phase. With the increasing angle α , as seen from the phase diagram, one gets onto the region of the

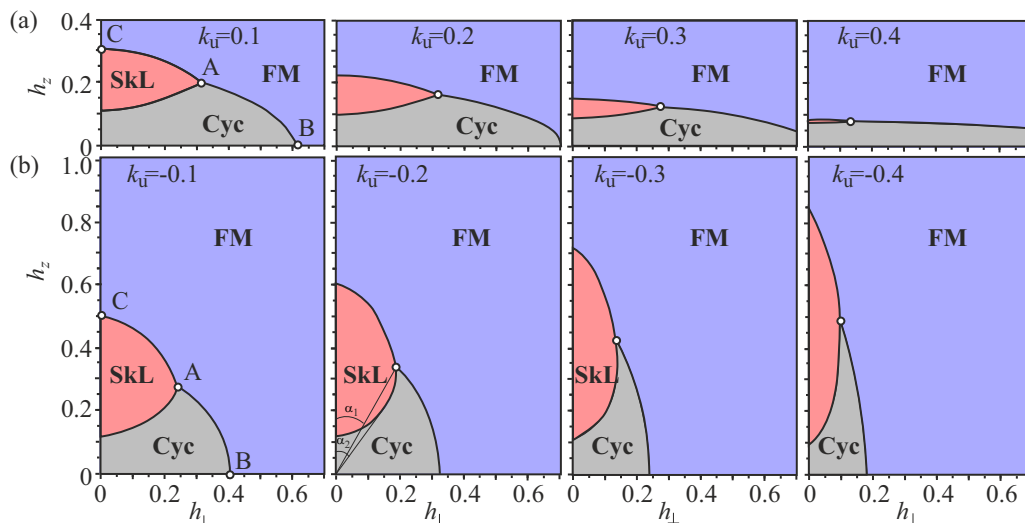


FIG. 6. Magnetic phase diagrams as obtained for model (2) on the h_{\perp} - h_z plane of the field components with the variable constant of the uniaxial anisotropy (k_u) for the easy-axis (a) and easy-plane (b) cases. h_{\perp} and h_z stand for the magnetic field components perpendicular and along the high-symmetry (C_n) axis. The second graph in (b) also shows how the critical angles α_1 and α_2 signifying the onset of the reentrant phenomenon are defined. In the interval $\alpha_1 - \alpha_2$, with increasing field the SkL transforms back to a skewed spiral state via the first-order phase transition.

stable skewed spiral. Therefore a clear coexistence phase of the isolated skyrmion and the skewed spiral can be reached.

For $h > 0.5$, even for $\alpha = \pi/2$, ISs exist as localized entities within the homogeneously magnetized in-plane phase as also demonstrated for antiskyrmions in Fig. 3(a).

The theoretical phase diagrams in Fig. 6 reproduce the main aspects of the experimental phase diagrams in Refs. [12,22] for both GaV_4Se_8 and GaV_4S_8 as compared with the isotropic case: (i) the ratio of the critical fields required to reach the ferromagnetic state along and perpendicular to the polar c axis (i.e., the ratio h_C/h_B), (ii) the extended or reduced angular stability range of SkL for the tilted fields in case of UA of easy-axis or easy-plane type, and (iii) the suppression or elongation of the stability range of the cycloidal states against fields perpendicular to the polar axis (point B). In particular, the value of the UA $k_u = 0.25$ reproduces well the experimentally constructed phase diagram in Ref. [22] and was chosen to match the ratio h_C/h_B in Fig. 6(b) and the temperature value in Fig. 7(c).

We therefore argue that the role played by the UA is different in chiral B20 magnets and in considered materials with C_{nv} and D_{2d} symmetry. In the first case, the UA of the easy-axis type (introduced by the axial deformation of the originally cubic structure) is invoked to suppress the conical phase [29]. SkL becomes thermodynamically stable in some interval of anisotropy parameters although in the rest of the phase diagram SkL remains a metastable state. For the UA of the easy-plane type, only the conical phase is the global minimum of the functional (2). To stabilize SkL in this case, one should find corresponding directions of an applied magnetic field. In particular, cigarlike skyrmions can be stabilized with their axes lying in the easy plane together with the co-aligned magnetic field [36].

In the case of C_{nv} and D_{2d} acentric magnets, the UA modifies correspondingly the regions of the SkL stability promoting either ISs (easy-axis type) or enhancing the stability range of SkL (easy-plane type). The easy-plane anisotropy

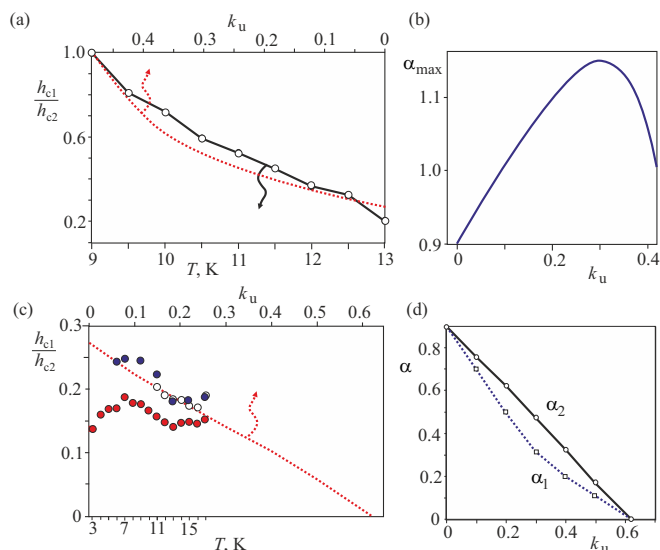


FIG. 7. (a) the temperature-dependent (lower scale, black line with circular markers) ratio h_{c1}/h_{c2} as obtained from the experimental phase diagrams in Ref. [12] and plotted together with the UA-dependent ratio obtained theoretically from model (2) (upper scale, red dotted line). (b) The maximal angle α_{\max} of the tilted magnetic field corresponding to the point A at the phase diagram of Fig. 6(a) and plotted in dependence on the constant k_u of UA. For α exceeding this value, no SkL can be realized. (c) The ratio h_{c1}/h_{c2} plotted for the easy-plane UA: open circular markers show the values from Ref. [22], blue and red circular markers, from Ref. [23]. (d) k_u dependence of the angles α_1 and α_2 signifying the onset and ending of the reentrant phenomenon at which the spiral state may appear from the skyrmion lattice at the increasing magnetic field.

may also lead to a stability of nonaxisymmetric IS with unique properties [40] as compared to ordinary axisymmetric skyrmions [30].

IV. CONCLUSIONS

In conclusion, we present theoretical studies on the robustness of skyrmions in tilted magnetic fields with special attention on the role of uniaxial magnetic anisotropy, which turns out to be a key factor governing the stability range of the modulated states. Together with earlier complementary studies on the cubic chiral magnets, our results on axially symmetric noncentrosymmetric magnets establish a consistent picture about the role of uniaxial anisotropy in the stability of modulated phases including spiral, skyrmion, and antiskyrmion lattices. Our findings can be tested experimentally in noncen-

trosymmetric magnets lacking the Lifshitz invariants along z , e.g., with C_{nv} , D_{2d} , and S_4 crystallographic symmetry. We also described the deformations of skyrmions and antiskyrmions, both in lattices and individual ones, when the magnetic field is tilted away from this unique axis, which is the high-symmetry axis in these crystallographic classes.

ACKNOWLEDGMENTS

The authors are grateful to K. Inoue, A. Bogdanov, Y. Togawa, M. Mostovoy, and S. Bordacs for useful discussions. This work was funded by JSPS Core-to-Core Program, Advanced Research Networks (Japan). This work was supported by the Deutsche Forschungsgemeinschaft through the Transregional Collaborative Research Center TRR 80 and by the Hungarian Research und OTKA K 108918.

-
- [1] I. E. Dzyaloshinskii, Zh. Eksp. Teor. Fiz. **46**, 1420 (1964) [Sov. Phys. JETP **19**, 960 (1964)].
- [2] P. Bak and M. H. Jensen, J. Phys. C **13**, L881 (1980).
- [3] A. N. Bogdanov and D. A. Yablonsky, Zh. Eksp. Teor. Fiz. **95**, 178 (1989) [Sov. Phys. JETP **68**, 101 (1989)].
- [4] A. Bogdanov and A. Hubert, J. Magn. Magn. Mater. **138**, 255 (1994).
- [5] X. Z. Yu, Y. Onose, N. Kanazawa, J. H. Park, J. H. Han, Y. Matsui, N. Nagaosa, and Y. Tokura, Nature (London) **465**, 901 (2010).
- [6] U. K. Röbller, A. A. Leonov, and A. N. Bogdanov, J. Phys.: Conf. Ser. **303**, 012105 (2011).
- [7] X. Z. Yu, N. Kanazawa, Y. Onose, K. Kimoto, W. Z. Zhang, S. Ishiwata, Y. Matsui, and Y. Tokura, Nat. Mater. **10**, 106 (2011).
- [8] N. Romming, C. Hanneken, M. Menzel, J. E. Bickel, B. Wolter, K. von Bergmann, A. Kubetzka, and R. Wiesendanger, Science **341**, 636 (2013).
- [9] N. Romming, A. Kubetzka, C. Hanneken, K. von Bergmann, and R. Wiesendanger, Phys. Rev. Lett. **114**, 177203 (2015).
- [10] S. Mühlbauer, B. Binz, F. Jonietz, C. Pfleiderer, A. Rosch, A. Neubauer, R. Georgii, and P. Böni, Science **323**, 915 (2009).
- [11] H. Wilhelm, M. Baenitz, M. Schmidt, U. K. Rossler, A. A. Leonov, and A. N. Bogdanov, Phys. Rev. Lett. **107**, 127203 (2011).
- [12] I. Kezsmarki, S. Bordacs, P. Milde, E. Neuber, L. M. Eng, J. S. White, H. M. Ronnow, C. D. Dewhurst, M. Mochizuki, K. Yanai, H. Nakamura, D. Ehlers, V. Tsurkan, and A. Loidl, Nat. Mater. **14**, 1116 (2015).
- [13] H. Du, D. Liang, C. Jin, L. Kong, M. J. Stolt, W. Ning, J. Yang, Y. Xing, J. Wang, R. Che, J. Zang, S. Jin, Y. Zhang, and M. Tian, Nat. Commun. **6**, 7637 (2015).
- [14] D. Liang, J. P. DeGrave, M. J. Stolt, Y. Tokura, and S. Jin, Nat. Commun. **6**, 8217 (2015).
- [15] T. Schulz, R. Ritz, A. Bauer, M. Halder, M. Wagner, C. Franz, C. Pfleiderer, K. Everschor, M. Garst, and A. Rosch, Nat. Phys. **8**, 301 (2012).
- [16] F. Jonietz, S. Mühlbauer, C. Pfleiderer, A. Neubauer, W. Münzer, A. Bauer, T. Adams, R. Georgii, P. Böni, R. A. Duine, K. Everschor, M. Garst, and A. Rosch, Science **330**, 1648 (2010).
- [17] P.-J. Hsu, A. Kubetzka, A. Finco, N. Romming, K. von Bergmann, and R. Wiesendanger, Nat. Nanotechnol. **12**, 123 (2017).
- [18] J. Sampaio, V. Cros, S. Rohart, A. Thiaville, and A. Fert, Nat. Nanotechnol. **8**, 839844 (2013).
- [19] E. M. R. Tomasello, R. Zivieri, L. Torres, M. Carpentieri, and G. Finocchio, Sci. Rep. **4**, 6784 (2014).
- [20] S. Seki, X. Z. Yu, S. Ishiwata, and Y. Tokura, Science **336**, 198 (2012).
- [21] A. K. Nayak, V. Kumar, P. Werner, E. Pippel, R. Sahoo, F. Damay, U. K. Röbller, C. Felser, and S. S. P. Parkin, Nature (London) **548**, 561 (2017).
- [22] S. Bordacs, S. Bordacs, A. Butykai, B. G. Szigeti, J. S. White, R. Cubitt, A. O. Leonov, S. Widmann, D. Ehlers, H.-A. Krug von Nidda, V. Tsurkan, A. Loidl, and I. Kezsmarki, Sci. Rep. **7**, 7584 (2017).
- [23] Y. Fujima, N. Abe, Y. Tokunaga, and T. Arima, Phys. Rev. B **95**, 180410(R) (2017).
- [24] N. A. Spaldin, M. Fiebig, and M. Mostovoy, J. Phys.: Condens. Matter **20**, 434203 (2008).
- [25] E. Ruff, S. Widmann, P. Lunkenheimer, V. Tsurkan, S. Bordacs, I. Kezsmarki, and A. Loidl, Sci. Adv. **1**, e1500916 (2015).
- [26] Z. Wang, E. Ruff, M. Schmidt, V. Tsurkan, I. Kezsmarki, P. Lunkenheimer, and A. Loidl, Phys. Rev. Lett. **115**, 207601 (2015).
- [27] D. Ehlers, I. Stasinopoulos, I. Kezsmarki, T. Feher, V. Tsurkan, H.-A. Krug von Nidda, D. Grundler, and A. Loidl, J. Phys.: Condens. Matter **29**, 065803 (2017).
- [28] J. Hlinka, F. Borodavka, I. Rafalovskyi, Z. Docekalova, J. Pokorny, I. Gregora, V. Tsurkan, H. Nakamura, F. Mayr, C. A. Kuntscher, A. Loidl, S. Bordacs, D. Szaller, H.-J. Lee, J. H. Lee, and I. Kezsmarki, Phys. Rev. B **94**, 060104(R) (2016).
- [29] A. B. Butenko, A. A. Leonov, U. K. Röbller, and A. N. Bogdanov, Phys. Rev. B **82**, 052403 (2010).
- [30] A. O. Leonov, T. L. Monchesky, N. Romming, A. Kubetzka, A. N. Bogdanov, and R. Wiesendanger, New J. Phys. **18**, 065003 (2016).
- [31] S.-Z. Lin and A. Saxena, Phys. Rev. B **92**, 180401 (2015).
- [32] A. Leonov, U. K. Roessler, and A. N. Bogdanov, J. Appl. Phys. **104**, 084304 (2008).

- [33] C. Wang, H. Du, X. Zhao, C. Jin, M. Tian, Y. Zhang, and R. Che, *Nano Lett.* **17**, 2921 (2017).
- [34] A. O. Leonov, Y. Togawa, T. L. Monchesky, A. N. Bogdanov, J. Kishine, Y. Kousaka, M. Miyagawa, T. Koyama, J. Akimitsu, Ts. Koyama, K. Harada, S. Mori, D. McGrouther, R. Lamb, M. Krajnak, S. McVitie, R. L. Stamps, and K. Inoue, *Phys. Rev. Lett.* **117**, 087202 (2016).
- [35] T. Yokouchi, N. Kanazawa, A. Tsukazaki, Y. Kozuka, M. Kawasaki, M. Ichikawa, F. Kagawa, and Y. Tokura, *Phys. Rev. B* **89**, 064416 (2014).
- [36] M. N. Wilson, A. B. Butenko, A. N. Bogdanov, and T. L. Monchesky, *Phys. Rev. B* **89**, 094411 (2014).
- [37] A. Bogdanov and A. Hubert, *J. Magn. Magn. Mater.* **195**, 182 (1999).
- [38] V. Laliena, J. Campo, J.-I. Kishine, A. S. Ovchinnikov, Y. Togawa, Y. Kousaka, and K. Inoue, *Phys. Rev. B* **93**, 134424 (2016).
- [39] J. Rowland, S. Banerjee, and M. Randeria, *Phys. Rev. B* **93**, 020404 (2016).
- [40] A. O. Leonov and I. Kezsmarki, *Phys. Rev. B* **96**, 014423 (2017).