

Heavy fermion superconductor CeCu₂Si₂ under high pressure: Multiprobing the valence crossoverG. Seyfarth,^{*} A.-S. Rüetschi, K. Sengupta, A. Georges,[†] and D. Jaccard
DPMC-Université de Genève, 24 Quai Ernest Ansermet, 1211 Geneva 4, Switzerland

S. Watanabe

Quantum Physics Section, Kyushu Institute of Technology, Fukuoka 804-8550, Japan

K. Miyake

Graduate School of Engineering Science, Osaka University, Toyonaka 560-0043, Japan

(Received 20 November 2011; published 3 May 2012)

The first heavy fermion superconductor CeCu₂Si₂ has not revealed all its striking mysteries yet. At high pressures, superconductivity is supposed to be mediated by valence fluctuations, in contrast to ambient pressure, where spin fluctuations most likely act as pairing glue. We have carried out a multiprobe (electric transport, thermopower, ac specific heat, Hall and Nernst effects) experiment up to 7 GPa on a high-quality CeCu₂Si₂ single crystal. For the first time, the resistivity data make it possible quantitatively to draw the valence crossover line within the p - T plane and to locate the critical end point at 4.5 ± 0.2 GPa and a slightly negative temperature. In the same pressure region, remarkable features have also been detected in the other physical properties, presumably acting as further signatures of the Ce valence crossover and the associated critical fluctuations: We observe maxima in the Hall and Nernst effects and a sign change and a strong sensitivity on magnetic field in the thermopower signal.

DOI: [10.1103/PhysRevB.85.205105](https://doi.org/10.1103/PhysRevB.85.205105)

PACS number(s): 74.70.Tx, 74.62.Fj, 74.25.fc, 74.25.fg

I. INTRODUCTION

Even though investigations started already in 1979,¹ CeCu₂Si₂ still carries key enigmas of heavy fermion (HF) superconductivity (SC). Numerous (pressure) studies on other Ce-based HF compounds, notably concerning the 115 family, focus on the magnetic instability or magnetic quantum critical point as a driving force for exotic behaviors such as unconventional SC. However, in reference to the case of elementary Ce, it is known that the Ce valence changes with pressure (delocalization of the $4f$ electron) and that this effect may also play a major role in the determination of electronic properties. As a consequence, observations in Ce compounds may result from a complex combination of different underlying microscopic phenomena. In this respect, CeCu₂Si₂ may be a good candidate to help to disentangle the contributions from the spin and charge degrees of freedom, more intricate in other Ce systems (like the 115 family). In particular, the pressure (p)-temperature (T) phase diagram (Fig. 1) of CeCu₂Si₂ deviates from the “generic” one in which SC emerges rather close to a magnetic instability, presumably mediated by critical spin fluctuations (SF). Instead, in CeCu₂Si₂ the superconducting region extends far beyond the magnetic quantum critical point (located at $p_c \approx 0$ GPa) and exhibits an enhanced transition temperature (T_c), culminating at ~ 2.4 K around 4 GPa.^{2,6-8} The most elaborate scenario^{9,10} invokes critical charge or valence fluctuations (VF) associated with an underlying valence transition (VT), that is, delocalization of the Ce $4f$ electron when tuning p across the critical region (p_V). In elementary Ce (see inset of Fig. 1), the first-order valence transition (FOVT) line (γ - α transition), the location of its critical end point (CEP), and the valence crossover (VCO) line have been unambiguously identified by several experiments.^{5,11} In CeCu₂Si₂, obviously the CEP lies at much lower T , where the electron delocalization is

accompanied in the transport data by a decrease in resistivity, in combination with SC at the lowest T . Preceding experiments point toward distinct natures of the two superconducting (sc) phases^{7,9} (related to p_c and p_V , respectively) and have unveiled close to p_V features peculiar to the concept of critical VF, such as a T -linear resistivity and an increased residual resistivity ρ_0 .^{2,8} Despite such compelling indications for the presence of critical VF in proximity to a CEP, additional signatures of the putative VT are still highly desirable in order to consolidate the decisive role of the $4f$ electron delocalization in the properties of CeCu₂Si₂ and accordingly in other Ce-based compounds.

This challenge is strongly constrained by the necessity of both extreme *and* reliable conditions. Here we report on a *multiprobe* experiment under high pressure, sensing simultaneously electric resistivity ρ , Hall ρ_{xy} and Nernst N effect, thermopower S , and ac specific heat C^{ac} on the very same CeCu₂Si₂ single crystal. Based on the resistivity data, we find that the VT is just missed in CeCu₂Si₂, with a CEP at slightly negative T , and suggest a simple method to track the VCO within the p - T plane. More strikingly, it is possible to understand the complete set of low T resistivity data as governed by the existence of the CEP via a simple scaling analysis. In addition, anomalies in the p dependence of ρ_{xy} , S , and N close to p_V are uncovered and appear intimately related to the Ce VCO.

II. EXPERIMENT AND SAMPLE QUALITY

The *multiprobe* configuration [Fig. 2(a)] offers the unique possibility to analyze complementary properties on the very same sample under *uniform* conditions. Multiprobing is particularly promising for high-pressure studies, and in the case of delicate reproducibility. Of course, it is impossible to probe all five quantities in an ideal manner: Here the geometry has

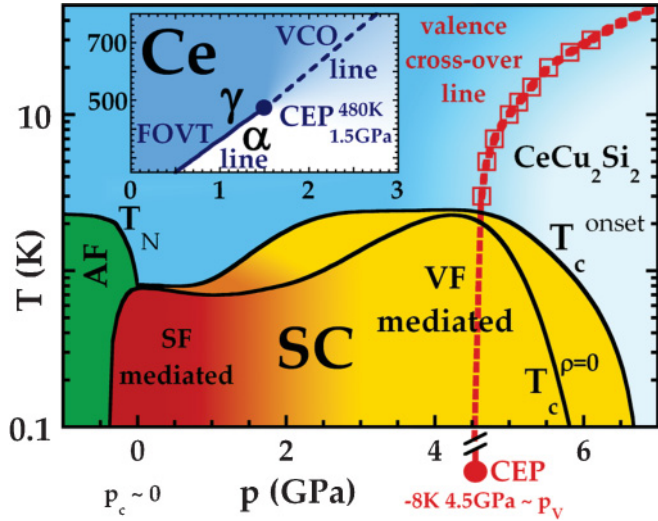


FIG. 1. (Color online) Updated p - T phase diagram of CeCu_2Si_2 with its superconducting phase extending far beyond the magnetic instability at p_c . The maximum in $T_c(p)$ roughly coincides with the position of the critical end point (CEP); the valence crossover (VCO) line (red) is obtained from $\rho(p)$ data and corresponds to that in Fig. 5(a). For negative p , data (Ref. 2) on CeCu_2Ge_2 were used for a qualitative outline, and between 0 and 2 GPa the smooth interpolation is based on Refs. 3 and 4. See Sec. III A for more details, particularly concerning the distinction between T_c^{onset} and $T_c^{\rho=0}$. (Inset) p - T plane of elementary Ce in vicinity of the CEP of the first-order valence transition (FOVT) line [according to Lipp *et al.* (Ref. 5)].

been optimized for ρ_{xy} and N (see Ref. 13). Figure 2(a) depicts the specifically designed setup within the pyrophyllite gasket of our Bridgman-type tungsten carbide anvil pressure cell.¹⁴ Daphne oil 7373 is used as a p -transmitting medium, providing a high level of hydrostaticity, as verified by the included Pb manometer (p gradient of at most 0.1 GPa at 7 GPa). Either an electric current [injected via the whole cross section of the sample by the wires labeled I^+ and I^- in Fig. 2(a)] or a thermal gradient (created via a resistive heater) can be applied to the ab plane of the platelike CeCu_2Si_2 single crystal ($\sim 600 \times 575 \times 25 \mu\text{m}^3$, same batch as in Ref. 3). As indicated in Fig. 2(a), the magnetic field was aligned perpendicular to that plane, along the c axis. EM dc nanovoltmeters model A14 were used to probe the longitudinal and transverse electric fields, E_x and E_y , respectively. The T elevation ΔT with respect to the pressure clamp (placed within a dilution refrigerator) is probed with an Au-AuFe thermocouple [calibrated under magnetic field (H) in a separate experiment]. For the C^{ac} measurements, the same lock-in-based technique as described in Ref. 4 was used for the detection of the amplitude of the periodic thermocouple voltage V^{ac} , including separate runs at low frequency to estimate the corresponding dc T elevation. The typical working frequencies varied from about 10 Hz at ambient pressure up to several 100 Hz at high pressures; no sc signal could be detected down to the lowest T from 4.9 GPa onward. For the determination of the thermoelectric power $S = E_x / -\nabla_x T$, we probed the longitudinal field via two voltages, V_{Au} and V_{AuFe} [both compared to the opposite longitudinal voltage lead, close to the negative current lead I^- in Fig. 2(a)]. The

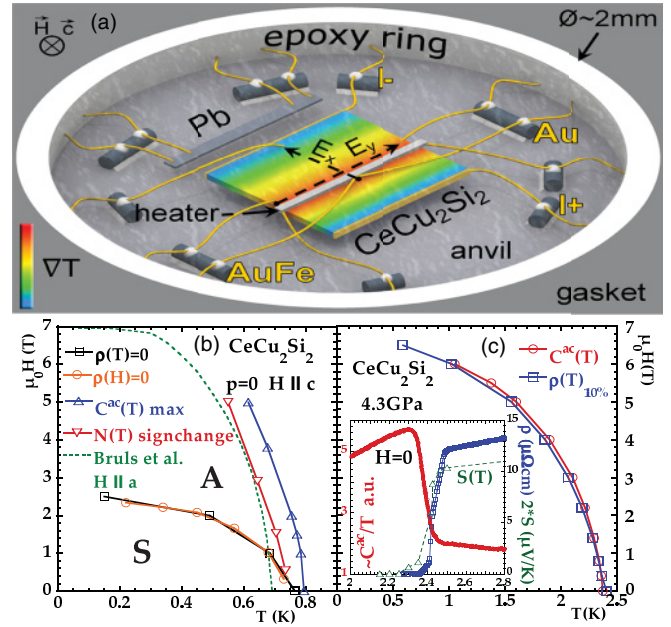


FIG. 2. (Color online) (a) Schematic view of the pressure cell and all the sensing contacts (Au wires of diameter $13 \mu\text{m}$) on the CeCu_2Si_2 crystal. (b) H - T phase diagram at $p = 0$. Superconducting $T_c(\rho)$ and $T_c(N)$ (C^{ac}) coincide (slightly depending on criteria) for $H = 0$; both C^{ac} and N indicate the A-phase boundary under field [close to former results from Bruls *et al.* (Ref. 12)]. (c) High sample homogeneity at 4.3 GPa, as testified by simultaneous sc transitions at $H = 0$ (inset) and under field in $\rho(T)$, $C^{\text{ac}}(T)$, and $S(T)$ (lines are guides for the eye only).

Seebeck coefficient of the sample can then be obtained from $S = S_{\text{AuFe}} + \frac{S_{\text{Au}} - S_{\text{AuFe}}}{1 - V_{\text{Au}}/V_{\text{AuFe}}}$, where S_{Au} can generally be neglected for $T < 4.2$ K. This procedure is carried out for several heating currents (different ΔT) and then extrapolated $S(\Delta T \rightarrow 0)$, yielding S for a given cryostat T . The Nernst signal N is defined as the transverse electric field generated by a longitudinal T gradient in the presence of a perpendicular magnetic field, $N = E_y / -\nabla_x T \simeq V_y / \Delta T$. The N data were always antisymmetrized with respect to H , and the sign was determined using the common “vortex convention,” yielding a positive N for moving vortices.^{13,15,16} Owing to the experimental configuration we measure here the *adiabatic* Nernst signal with a vanishing transverse heat current, neglecting a possible transverse T gradient.¹⁷

Sample quality and characterization are particularly important in the case of CeCu_2Si_2 because of its strong sensitivity on crystal growth conditions and stoichiometry.¹⁸ Here we summarize the key features of our single crystal with the help of two figures (at ambient and under p) comparing position, shape, and width of phase transitions as probed by different physical properties in zero and under magnetic field. Figure 2(b) displays the H - T phase diagram at ambient p obtained from ρ , N , and C^{ac} . The high superconducting $T_c(\rho = 0) = 780$ mK goes along with a remarkably low residual $\rho(T_c^+) = 8.3 \mu\Omega \text{cm}$ (see inset of Fig. 4). The sample can be classified as of A/S type,¹⁸ since the vanishing $\rho(T)$ coincides with a pronounced anomaly in $C^{\text{ac}}(T)$, corresponding to the antiferromagnetic Néel temperature T_N (as identified

by its decoupling from T_c under magnetic field and by the associated sign change of N , Ref. 13). Under pressure, T_N is rapidly suppressed,¹⁹ and close to p_V [Fig. 2(c)] a high degree of homogeneity is testified by simultaneous signatures in $\rho(T)$, $S(T)$, and $C^{ac}(T)$ of a *record* superconducting $T_c(H=0) \sim 2.4$ K. These outstanding sample characteristics, in particular the low residual resistivity and the record *bulk* T_c , constitute a solid basis for the following data analysis, focused on the vicinity of p_V .

III. RESULTS AND DISCUSSION

In the following, we expose and discuss one by one our results on the different investigated physical properties. As a highlight, we display in Fig. 3 (which we often refer to) the p dependence of the superconducting $T_c^{\rho=0}$ and of ρ_{xy} (0.75 K, 8 T), S (2 K, 8 T), and N (2 K, 8 T). A strong sensitivity of CeCu₂Si₂ to pressures around 4 GPa ($\sim p_V$) is revealed, as will be developed further throughout this communication. Most emphasis is put on our electric transport results, since the improved data and sample quality allow us to go beyond previous studies and address quantitatively features linked to the $4f$ electron delocalization. Subsequently, the other multiprobe results will be presented, partly consolidating already existing data, partly opening unprecedented routes of exploration. Even if at this stage a deep physical analysis may be premature in the latter case, this extensive set of data which allows a direct comparison of five experimental probes on the very same CeCu₂Si₂ single crystal under high pressure may be worthwhile on its own and trigger further experimental and theoretical investigations.

A. Resistivity

1. Comparison to previous results

The complete set of electric transport data $\rho(T, p)$ is shown in Fig. 4. All major characteristics are in line with previous reports,^{2,7,8} namely the extracted p dependence of

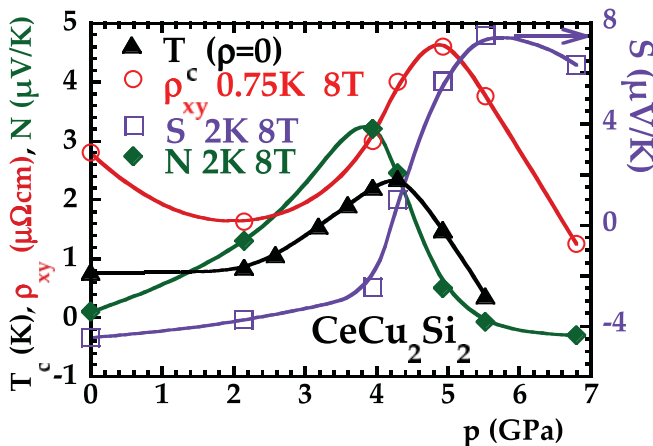


FIG. 3. (Color online) p dependence of $T_c^{\rho=0}$, ρ_{xy} (0.75 K, 8 T), S (2 K, 8 T), and N (2 K, 8 T) (lines are guides for the eye). The maximum T_c is accompanied by a pronounced peak in $N(p)$ and a sign change in $S(p)$, whereas the maximum in $\rho_{xy}(p)$ occurs at slightly higher p , more following $\rho_0(p)$ [see Fig. 5(b)].

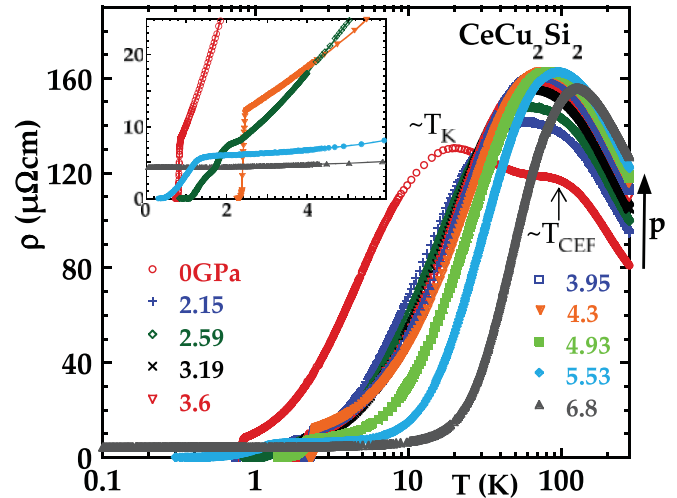


FIG. 4. (Color online) Complete $\rho(T, H=0)$ scans for all 10 investigated p on a semilog scale. At $p=0$, $\rho(T)$ clearly exhibits two separated maxima (merging at higher p), corresponding to the Kondo coherence ($T_K \sim 10$ K) and the crystal electric field ($T_{CEF} \sim 100$ K) energy scales. These data served as a basis to obtain the p dependencies shown in Fig. 5. [Inset (same symbols)] Magnification of the low- T region for some selected p . Several features become obvious: the increasing superconducting T_c and ρ_0 when reaching ~ 4 GPa, the almost T -linear resistivity at 4.3 GPa, and the collapse of the A coefficient at highest p .

the parameters ρ_0 , A , and n , obtained from simple fits to $\rho(T \leq 4.2 \text{ K}, H=0) = \rho_0 + A * T^n$. In particular, from the inset of Fig. 4 at low T , three qualitative features can already be distinguished by eye: As a function of increasing p , the extrapolated residual resistivity ρ_0 increases before a final downturn, the A coefficient drops dramatically at high p , and, maybe less obvious, at 4.3 GPa $n(p)$ has a minimum. The VF theory^{8,9} predicts for a $4f$ electron delocalization realized at $p = p_V$ a maximum in the associated fluctuations at slightly lower p ($p \lesssim p_V$), coupled to $n \sim 1$ and an enhancement in A and T_c . Right at $p = p_V$, the impurity scattering cross section should rise strongly, leading to a maximum in $\rho_0(p)$. Beyond the delocalization ($p > p_V$), obviously a deep loss of correlation effects is expected. These features are all in good agreement with the experiment [Fig. 5(b)]: While $A(p)$ and $T_c(p)$ culminate around 4 GPa, the extremum in $\rho_0(p)$ points to a slightly higher p_V . Note that compared to previous studies, we do not only observe a sudden drop in $A(p)$ (revealing the loss of correlations), but a preceding local maximum which coincides with that in $T_c(p)$ [such a signature of enhanced correlations close to p_V is in line with a significant increase of the initial slope of the upper critical field $|dH_{c2}/dT|_{T=T_c}$ probed by $C^{ac}(p \rightarrow p_V)$; Fig. 5(b)]. Overall, these results corroborate the VF scenario in a general manner, but do not allow to identify the CEP and the VT or VCO line.

2. Isothermal p -dependence and $4f$ electron delocalization: Valence crossover line and location of the CEP

In order to progress on this issue, we take advantage of the high sample quality, and extend the previous analysis by simply plotting in Fig. 5(a) the p dependence $\rho^*(p) = \rho - \rho_0$ for several $T \leq 30$ K (based on our T scans from Fig. 4).

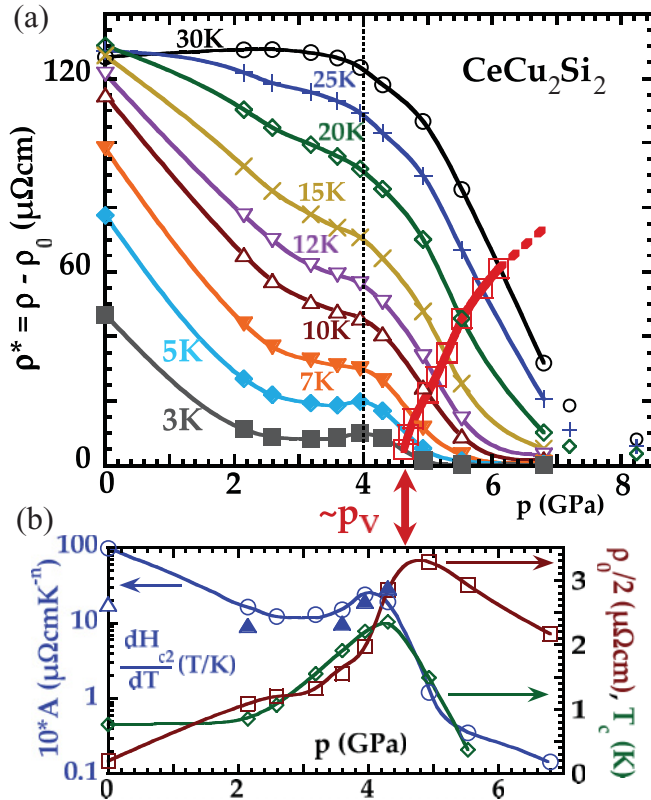


FIG. 5. (Color online) (a) Isothermal $\rho^*(p) = \rho - \rho_0$, constructed from the $\rho(T)$ scans from Fig. 4 at selected T (lines are guides for the eye). The $\rho^*(p)$ curves decrease strongly above 4 GPa, within a p range that gets narrower with decreasing T . The red open squares indicate the 50% drop of ρ^* compared to the value at 4 GPa (vertical dotted black line). The unconnected data points at high T stem from previous work (Ref. 4) and solely illustrate how the ρ^* downturn completes at high p . (b) p dependence of the superconducting T_c ($\rho = 0$), ρ_0 (for visibility scaled by a factor of 0.5), the A coefficient (scaled by a factor of 10) and of the initial slope $|dH_{c2}/dT|_{T=T_c}$ [open (ρ) and filled (C^{ac}) triangles]. For $T \rightarrow 0$ the red VCO line $p_{VCO}(T)$ from panel (a) joins the maximum in $\rho_0(p)$, whereas the maximum of $A(p)$ (and of $|dH_{c2}/dT|_{T=T_c}$) coincides with the maximum T_c .

In the following, we want to carefully examine how the p -induced $4f$ electron delocalization acts on the resistivity at various T . To facilitate the comparison of the different curves, it is essential to subtract the T -independent “background,” that is, the contribution from impurity scattering $\rho_0(p)$, even if this procedure may introduce some error bars due to the uncertainty on the determination of ρ_0 [of less than the symbol size in Fig. 5(b)]. Note that the p dependence of ρ_0 is not artificial at all, but can be well understood within the VF theory, as pointed out above. Furthermore, it is noteworthy that up to ~ 30 K the phonon contribution remains negligible, as well as the influence of the higher crystal electric field (CEF) levels. However, at higher T , the situation may be less straightforward, particularly under p when the ground-state degeneracy is affected by the crossing of the Kondo and CEF energy scales (see also Fig. 4).

Let us now look in detail at Fig. 5(a): The initial decrease of ρ^* with p can be explained with the increase of the coherence

(Kondo) energy scale (starting at ~ 20 K at $p = 0$; see Fig. 4). Preceded by a small upturn at low T , due to the enhanced A [Fig. 5(b)], $\rho^*(p)$ drops significantly above 4 GPa, indicating the Ce $4f$ electron delocalization. This resistance loss takes place over a ~ 4 -times-wider p range at 30 K compared to 3 K. For illustration purposes only we have completed the curves at higher T by data above 7 GPa [isolated points in Fig. 5(a)], originating from a previous experiment⁴ and reanalyzed in the same manner as the present one. Although the overall behavior under p is very similar, we do not include these older data in the further analysis to avoid any ambiguity. The only purpose here is to document the experimentally well-established fact that the delocalization “terminates” with a low resistivity, even at 30 K. The observed broadening of $\rho(p)$ with increasing T is reminiscent of elementary Ce¹¹ [see Fig. 6(b)], where the first-order discontinuity in $\rho(p, T < T_{cr})$ disappears when crossing the CEP ($T_{cr}^{Ce} \approx 480$ K⁵; see inset of Fig. 1) and becomes smoother and smoother within the VCO regime. However, in CeCu₂Si₂, the situation is less straightforward: Below 30 K the scattering rate has a strong T dependence. More quantitatively, in Ce the typical magnitude of resistivity on the low p side varies by only $\sim 10\%$ between 450 K and 600 K¹¹ [see Fig. 6(b)], whereas it varies by more than a factor of 10 in CeCu₂Si₂, considering the T effect at 3 GPa, for example [Fig. 5(a)]. In order to disentangle the intrinsic effect of the delocalization from that of scattering, we consider the *relative* $\rho^*(p)$ drop at each T , that is, $\rho_{norm} = [\rho^* - \rho^*(p_{VCO})]/\rho^*(p_{VCO})$ [see Fig. 6(a)], where p_{VCO} designates for each T the 50% midpoint of the $\rho^*(p)$ drop [red squares in Figs. 5(a) and 6(a)], compared to the “initial” value at 4 GPa [dashed black line in Fig. 5(a)]. Such a normalization can be regarded as a simple way to separate the T -dependent contribution to the scattering rate, in order to better detect the p dependence of the Drude weight. Albeit the admittedly small number of data points, the resistance drop is clearly more pronounced at lower T [Fig. 6(a)], similar to the approach of the CEP in Ce¹¹ [Fig. 6(b)]. Obviously, the chosen criterion of normalization may appear somehow arbitrary, and the critical reader may wonder whether it affects the aforementioned data treatment. Hence, we have checked that other criteria like a normalization with respect to 3.5, 4.5, or 5 GPa do not qualitatively alter the main conclusions, that is, a steeper drop in the normalized resistivity with lowering T . The reference point at 4 GPa, just at the onset of the downturn, simply appears to be the most intuitive and reasonable one.

In any case, resistivity gets more sensitive to p for decreasing T , consistent with the approach of a CEP, at which the resistance drop should get vertical, like in elementary Ce. In order to locate the CEP, we quantified the steepness of the resistance drop through its slope at the midpoint [red squares in Figs. 5(a) and 6(a)], $\chi = |d\rho_{norm}/dp|_{p=p_{VCO}}$, and analyzed its divergence $\chi(T \rightarrow T_{cr})$, as shown in Fig. 6(c). The error bars take into account the uncertainty on p and that introduced via ρ_0 (mentioned above). A simple fit of the type $\propto (T - T_{cr})^{-\gamma}$ yields $T_{cr}^{CeCu_2Si_2} \cong -8 \pm 3$ K and $\gamma \cong 1$ and a similar treatment of the Ce data¹¹ $T_{cr}^{Ce} \cong 465$ K (in agreement with more recent data⁵). Notice that experimental limitations like sample imperfections or the inevitable p gradient tend to broaden the resistivity drop, and hence the extracted T_{cr} may be slightly underestimated. In this respect, locally a FOVT

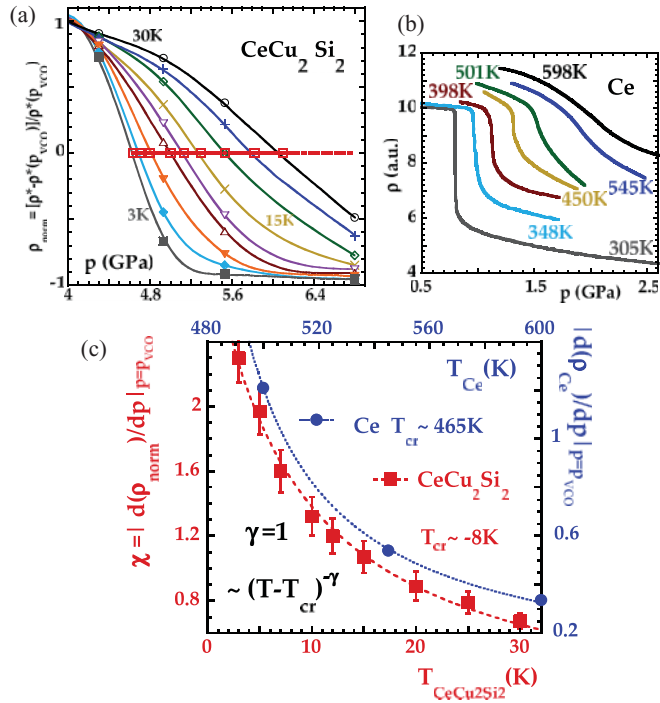


FIG. 6. (Color online) (a) A simple way to demonstrate that resistivity gets more sensitive to p with lowering T is to normalize by the midpoint of the $\rho^*(p)$ drop [identified by the red open squares in Fig. 5(a)], compared to the initial value at 4 GPa, yielding $\rho_{\text{norm}} = [\rho^* - \rho^*(p_{\text{VCO}})] / \rho^*(p_{\text{VCO}})$ (lines are guides for the eye). (b) Original resistivity data (p scans at fixed T) from Ref. 11 in elementary Ce. Below the CEP at 480 K, $\rho(p)$ exhibits a clear discontinuity at the first-order valence transition (FOVT), whereas the $\rho(p)$ curves get smoother for $T > T_{\text{cr}}$. (c) Divergence of the slope $\chi = |d\rho_{\text{norm}}/dp|_{p=p_{\text{VCO}}}$, obtained from (a) (the error bars take into account the uncertainty on p and that introduced via ρ_0). From a simple fit (dashed line), $\gamma \sim 1$ and $T_{\text{cr}}^{\text{CeCu}_2\text{Si}_2} \sim -8$ K can be extracted. For Ce data (Ref. 11) a similar treatment yields $T_{\text{cr}}^{\text{Ce}} \sim 465$ K.

(slightly positive T_{cr}) may not be excluded, so that density fluctuations may mediate SC²⁰ via a vanishing compressibility (Ref. 5, Ce case).

This basic analysis of the slope $\chi(T \rightarrow T_{\text{cr}})$ establishes for the first time experimentally that the CEP of the VT line in CeCu₂Si₂ lies at a slightly negative T . Even if some uncertainty on the precise value remains—which is almost unavoidable in such a high- p experiment—this outcome is more than just a qualitative result, in the sense that it clearly specifies the (so far unknown) magnitude of $T_{\text{cr}}^{\text{CeCu}_2\text{Si}_2}$ to be of the order of several degrees. It substantiates that the FOVT is just missed in CeCu₂Si₂, meaning that only a VCO is realized. Of course, electric transport on its own constitutes only an indirect measure of the valence change. However, recent reports^{21,22} based on more microscopic probes of the $4f$ electron count and their qualitative conclusions on a possible VCO in CeCu₂Si₂ under p corroborate our results and assumptions. Furthermore, previous ρ data on the CeCu₂(Si_{1-x}/Ge_x)₂ system (shown in Fig. 4 of Ref. 23) exhibit for $x = 0.1$ features qualitatively similar to those presented here. Altogether, a consistent scenario emerges, in which the

key ingredient is the proximity of CeCu₂Si₂ at p_V to the CEP: This constellation allows the associated critical VF to still play an important role in the low- T physics, such as mediating SC, in very close agreement to the already introduced VF theory [see, in particular, the scenario outlined in Fig. 2(b) of Ref. 10]. In this respect, our results do not only specify the location of the CEP close to $T = 0$, but offer also a simple method to track the VCO within the p - T plane: Connecting the previously defined midpoints [red squares in Figs. 5(a) and 6(a)], we obtain the red VCO line drawn in Fig. 1 [equivalent to that in Fig. 5(a)]. As already mentioned, the precise pathway may slightly depend on the normalization criteria. On this footing, the minor downward curvature on the high- T side of the VCO line may be somehow exaggerated: At 4 GPa and 30 K, resistivity obviously saturates, approaching more or less the unitary limit. This means that the midpoint should actually be situated at a marginally lower p_{VCO} . Regardless of this detail, and compared to the rather qualitative lines in previous p - T phase diagrams,^{23–26} the present one is the first signature of the $4f$ electron delocalization based on experiment. Finally, extrapolating this line, $p_{\text{cr}}^{\text{CeCu}_2\text{Si}_2} (= p_V) \cong 4.5 \pm 0.2$ GPa can be deduced, so that both coordinates of the CEP are determined within the experimental errors. Joining Figs. 5(a) and 5(b), it becomes obvious that the extrapolation of the red VCO line roughly coincides with the maximum in $\rho_0(p)$, which is a good sign of consistency (within the framework of the critical VF), since both features are triggered precisely by the $4f$ electron delocalization.

3. Uniform behavior at a generalized distance from the CEP

Next let us focus on an additional feature, revealing in a complementary manner that resistivity is governed by the existence of an underlying CEP. Strikingly, it is possible to collapse all the $\rho_{\text{norm}}(p)$ data on a single curve in vicinity to p_{VCO} . Introducing the dimensionless variables $h = (p - p_{\text{VCO}}) / p_{\text{VCO}}$ and $\theta = (T - T_{\text{cr}}) / |T_{\text{cr}}|$, a collapse of excellent quality is obtained according to $\rho_{\text{norm}} = f(h/\theta)$ (f , scaling function) with $T_{\text{cr}} \cong -8 \pm 5$ K, as shown in Fig. 7 for $p \geq 3.6$ GPa. This means that for a generalized “distance” h/θ from the CEP, the ρ_{norm} data behave in a unique manner. As indicated, the sensitivity on the chosen T_{cr} is limited as well as the number of data points, and the applicable p range may slightly vary according to the normalization reference (see above). Nevertheless, the data collapse is quite robust and its quality noteworthy, as well as the fact that the extracted T_{cr} is of the same order of magnitude as previously deduced from the T divergence of χ . We have also tried to apply the universal scaling theory of critical phenomena, which has, for example, been successful in describing the Mott transition probed by $\rho(p, T)$ in oxide materials²⁷ or in characterizing the valence instability in Ce_{1-x}Th_x.²⁸ Within such a generalized framework, the expected scaling law for $T > T_{\text{cr}}$ yields $\rho_{\text{norm}} / h^{1/\delta} = f(h/\theta^{\gamma\delta/(\delta-1)})$, with γ, δ critical exponents (mean-field approach: $\gamma^{\text{MF}} = 1, \delta^{\text{MF}} = 3$). In the case of CeCu₂Si₂ this leads empirically to $\gamma = 1$ and $\delta \rightarrow \infty$ (Fig. 7). Even if the collapse is not strongly sensitive on the choice of δ , it seems incompatible with $\delta < 5$ and does hence not correspond to a simple universality class such as the liquid-gas transition. Further experiments with a higher

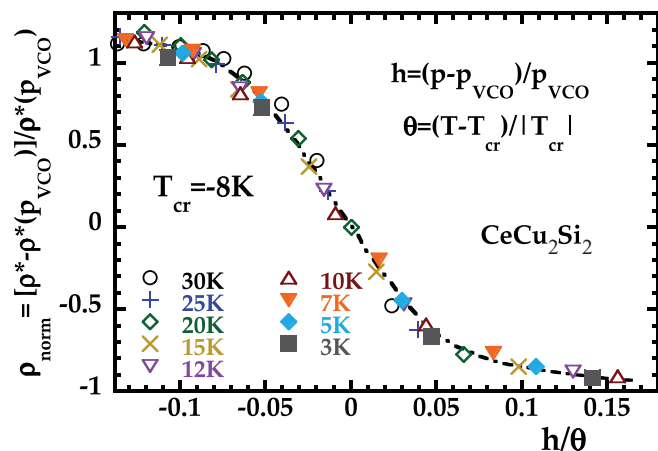


FIG. 7. (Color online) Best collapse of all normalized $\rho_{\text{norm}}(p)$ data [from Fig. 6(a)] as a function of the generalized “distance” h/θ from the CEP ($T_{\text{cr}} \sim -8$ K, $p \geq 3.6$ GPa; dashed line, guide for the eye). Within the universal framework of critical phenomena (see text), such a representation corresponds to $\gamma = 1$ and $\delta \rightarrow \infty$.

data density, also in related compounds, may help to better understand this issue.

4. General relevancy of $\rho(p)$ analysis

Altogether, the divergence of the slope $\chi(T \rightarrow T_{\text{cr}})$ and the observed data collapse strongly suggest that the resistivity around p_V is governed by the proximity to a CEP (at slightly negative T). This outcome offers different avenues for future exploration. First, it may be interesting to study on CeCu_2Si_2 single crystals of different origin the involvement of critical VF in SC, that is the relationship between T_c and T_{cr} (of course, other factors that influence T_c have to be taken into account as well). Second, even more promising, the widespread relevance of the VF scenario should be investigated by applying a similar resistivity analysis to other Ce-based compounds, especially to the more common cases where p_c and p_V are not well separated. Indeed, the identification of p_V and the $4f$ electron delocalization is generally more elusive than that of the breakdown of magnetism, p_c , reflecting the competition between the Kondo effect and the RKKY interaction. Rather exceptionally, in CeCu_2Si_2 $p_c \ll p_V$, and $\rho(T, p = 0)$ exhibits two distinct maxima/energy scales, as already noticed in Fig. 4 (T_K and T_{CEF}). Strikingly, close to $p \rightarrow p_V$ these maxima merge. Although the microscopic link with the VCO may not be clear cut, phenomenologically such merging maxima in resistivity can be found in numerous other systems (like $\text{CePd}_2\text{Si}_2/\text{Ge}_2$,²⁹ CeRu_2Ge_2 ,³⁰ and CeCu_5Au ³¹), where the proximity to an underlying CEP may therefore be revealed. However, in contrast to CeCu_2Si_2 , in those systems both maxima already overlap for $p \rightarrow p_c$. Hence, $p_c \lesssim p_V$ is suspected. The latter scenario is also assumed in CeRhIn_5 , mainly based on the subsistence of SC in a wide region around p_c , the maximum in ρ_0 , and a T -linear resistivity ($n \sim 1$).^{32–34} Using our method could be an important ingredient for probing the existence of a CEP and the relevancy of VF, notably for SC, in these compounds. Nonetheless, another dissimilarity to CeCu_2Si_2 may occur: The resistance drop associated with the delocalization may be less pronounced,

which means experimentally less accessible, due to a lower lying CEP (more negative T_{cr}). Concurrently, the impact of the critical VF on the physical properties gets reduced. Previous experimental data in other Ce systems (obtained mainly under less reliable conditions) may in some cases (for example, in CeCu_2Ge_2 ^{35,36}) exhibit close to p_V features qualitatively similar to those discussed here in CeCu_2Si_2 , but do not allow, so far, an incontrovertible quantitative analysis. New high p experiments with improved accuracy will facilitate progress on this explorative route. Let us finally add that in other systems like CeIrIn_5 ^{37,38} or YbAg/AuCu_4 ^{39,40} p is replaced by magnetic field as tuning parameter to induce the proximity to a CEP and critical VF.

5. Broadening of the resistive transitions

Last but not least, let us comment on the broadening of the sc transitions as seen by $\rho(T)$ at intermediate and high p . The inset of Fig. 4 exemplifies typical shapes of dropping resistivities at 2.59 and 5.53 GPa. In the p - T phase diagram (Fig. 1), we have represented two lines delimiting the superconducting phase, one corresponding to the onset temperature (T_c^{onset}) and the other to $\rho = 0$ ($T_c^{\rho=0}$). The resulting separation of both lines *below* and *above* p_V (in conjunction with narrow transitions at $p = 0$ and p_V) is robust and found systematically in all CeCu_2Si_2 (and CeCu_2Ge_2) samples (already mentioned in early reports⁶) and does not depend on the p conditions, since it has been observed in a variety of pressure media,^{2,3,7,8,25} among which in highly hydrostatic ⁴He. One may argue that broad resistive transitions are quite common at the edges of superconducting regions, but in CeCu_2Si_2 , at intermediate p , the broadening appears precisely in a region where the p dependence of T_c is rather weak. For Fig. 1, between 0 and 2.15 GPa, older data^{3,4} served as a basis for a smooth interpolation. $T_c^{\text{onset}}(p)$ has already reached the level of the maximum T_c at ~ 2.5 GPa, but without a cusplike feature as in previous reports.^{7,41} This rather quick increase of $T_c^{\text{onset}}(p)$ may point to the fact that the VF pairing mechanism needs to be considered already at low p (at least in some form), as already inferred from the very weak decrease of $T_c(p)$ above p_c .⁴² Around p_V , the maximum T_c^{onset} and $T_c^{\rho=0}$ coincide. Above p_V , in several samples^{3,41,43} the superconducting region extends to high p ; that is, the decrease of $T_c^{\text{onset}}(p > p_V)$ is less steep than shown in Fig. 1, but may exhibit a jump close to 8 GPa.⁴¹ As a general feature, the bulk T_c as probed by C^{ac} coincides with $T_c^{\rho=0}$. More precisely, at intermediate p $C^{\text{ac}}(T)$ does neither display any signature of T_c^{onset} nor any notable broadening of the superconducting anomaly associated with $T_c^{\text{bulk}} \sim T_c^{\rho=0}$ (not shown, but similar to reports in Refs. 4 and 7). Remarkably, above ~ 4.9 GPa, no more anomaly in $C^{\text{ac}}(T)$ can be detected, down to the lowest reachable T . In this context, it may be worthwhile to notice that the T_c 's from Ref. 41 originate from ac susceptibility, sensitive to a surface layer. Altogether, the broadening of the resistive transition at intermediate and high p in CeCu_2Si_2 appears as an *intrinsic* phenomenon, even if details may be sample dependent. However, the physical origin of this broadening remains an open question. Further investigations are needed to elucidate whether it may be related to the symmetry change of the sc order parameter (at least at intermediate p),¹⁹ to

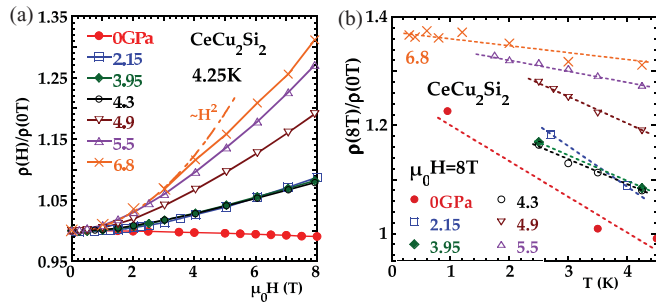


FIG. 8. (Color online) (a) H dependence of the ratio $\rho(H)/\rho(H = 0)$ for various p at 4.25 K. At ambient p , in more usual terms the magnetoresistance $\Delta\rho = \rho(H) - \rho(H = 0)$ is slightly negative, becomes positive for $p > 0$, but without any significant evolution between 2 and 4 GPa, and finally increases further. Just for comparison, a curve $\propto H^2$ is also shown as dash-dotted line. (b) T dependence of the ratio $\rho(8 T)/\rho(H = 0)$ for various p . The points at the right correspond to those of panel (a) at 8 T. Surprisingly, the extrapolation for $T \rightarrow 0$ does not seem to be strongly dependent on p (lines are guides for the eye only).

phenomena observed in the Ce-115 series,⁴⁴ or more directly to the presence of critical VF. Indeed, one could imagine a nonhomogeneous nucleation and spread of superconducting domains within the sample or on the surface, depending on the local distribution of T_{cr} and the closeness to p_V .

B. Magnetoresistance

Let us now study the influence of magnetic field on resistivity, that is, the magnetoresistance. First we stress that solely H -symmetrized $\rho(H)$ data are used in the following discussion, excluding any spurious contribution from Hall effect, but strongly limiting the number of available data points. Figure 8 displays the measured H and T dependencies of the ratio $\rho(H)/\rho(H = 0)$ for several p at 4.25 K and 8 T, respectively. We preferred the representation of the relative value $\rho(H)/\rho(0)$ to the absolute value $\Delta\rho = \rho(H) - \rho(H = 0)$ (commonly called magnetoresistance) because of the p dependence of the residual ρ_0 . At ambient p and for decreasing T $\Delta\rho$ changes sign from negative to positive at around 4 K, as reported earlier⁴⁵ (at about 2 K in Ref. 46). In a simplified picture, the sign-change may be considered as a rough measure of the coherence temperature T_{coh} of the Ce Kondo lattice (generally $T_{coh} \ll T_K$), as also indicated by the maximum in the Hall data in the same T region (see Sec. III D). However, quantitatively we find a more pronounced $\rho(H)/\rho(0)$ than measured back in 1987 (Ref. 45): For example, at 1.5 K a linear interpolation yields $\rho(8 T)/\rho(0) \sim 1.15$ [Fig. 8(b)], which corresponds to an increase of at least a factor of 5, despite our very low ρ_0 . Comparing crystals of various quality (investigated by our group over the last 15 years or so^{3,4}), the absolute magnetoresistance $\Delta\rho$ depends very little on ρ_0 at temperatures of a few K and a magnetic field of about 8 T. It looks like as if resistivity had two contributions: one that is field independent and varies strongly from sample to sample and another one which always gives the same order of magnitude of $\Delta\rho$ in magnetic field. This explains, at least phenomenologically, a considerable spread in $\rho(H)/\rho(0)$ on different samples. Next let us focus on the

effect of p . At 4.25 K (Fig. 8), $\Delta\rho(p)$ first gets positive, in accordance with the increase of T_K (and hence of T_{coh}) with p . Surprisingly, from ~ 2 GPa onward $[\rho(H)/\rho(0)](p)$ is almost constant, and continues to rise only above p_V , before likely reaching some saturation at high p . Roughly, such a behavior is reminiscent of $A(p)$, which drops with p , except in the region before p_V [where it even gets enhanced; see Fig. 5(b)]. Conceivably, the effect of a raising $T_K(p)$ [resulting in an increasing $[\rho(H)/\rho(0)](p)$] is superimposed by another phenomenon, of opposite effect and driven by critical VF below p_V . Further investigations are necessary to elucidate this question. Considering the p evolution of $\rho(8 T)/\rho(0)(T)$, we find another unexpected result: the extrapolation for $T \rightarrow 0$ seems to point to an almost p -independent $\rho(8 T)/\rho(0)$ of about 1.35: The higher values of $\rho(H)/\rho(0)$ at finite T are “compensated” by a weaker T dependence for increasing p . Of course, more data points at low T would be needed, especially around p_V , to confirm this trend. Less intriguingly, $\rho(H)/\rho(0)$ clearly follows the usual H^2 dependence at low fields, as exemplified in Fig. 8(a) for 6.8 GPa. Another standard examination is provided by the validity check of Kohler’s rule. It states that the effect of magnetic field on resistivity, $\Delta\rho(H)/\rho(0)$, scales as a function of $H/\rho(0)$.⁴⁷ Deviations from this standard behavior are also observed, for example, in CeRhIn₅, where magnetoresistance violates Kohler’s rule in the p region exhibiting prominent non-Fermi liquid properties, but satisfies a modified scaling relation.⁴⁸ From our partial analysis (not shown) on CeCu₂Si₂, no significant deviation from Kohler’s rule throughout the investigated p range can be deduced. However, this preliminary statement still requires substantiation from supplementary data, especially at high p where $\rho(T < 4$ K) hardly varies, meaning that data points above 4 K should be included in order to perform the test on a broad parameter range.

C. Specific heat (ac)

Concerning ac specific heat, its main contribution, apart from validating bulk SC, is to confirm for the first time the enhancement of correlation effects near the maximum T_c by a bulk probe, at least when considering that the initial slope $|dH_{c2}/dT|_{T=T_c}$ qualitatively reflects the quasiparticle velocity or effective mass as a correlation strength sensor. Indeed, an enhancement by a factor of ~ 3 of the initial slope at the maximum T_c compared to 2 GPa is observed [solid triangles in Fig. 5(b)]. As mentioned earlier, such a trend had already been inferred from resistivity and a kind of “plateau” in $A(p \sim 4$ GPa),^{2,7,8} which has now grown into a clear maximum in the present high-quality single crystal [Fig. 5(b)]. More specifically, one may also be interested in the p evolution of the properties of the superconducting phase itself, which is in part characterized by the $H_{c2}(T)$ curves. Without pushing the analysis too far, we just present our new $H_{c2}(T)$ data that allow an extension up to p_V of a scaling study suggested by Lengyel *et al.*¹⁹ (restricted to $p < 2.1$ GPa). Figure 9 depicts the corresponding normalized $H/T_c - T/T_c$ phase diagram, including the data from Ref. 19. For $p \sim 0$ (ρ data) and $p \sim 2$ GPa the trend of two distinct regimes is confirmed, that is, a ratio of the initial slopes $|dH_{c2}/dT|_{T=T_c}$ of roughly 1.75 (Ref. 19). However, for $p \rightarrow p_V$, the initial slope

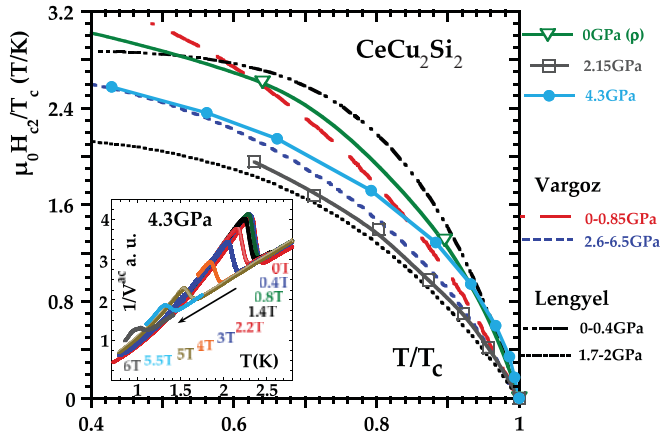


FIG. 9. (Color online) Normalized $H_{c2}(T)$ data from C^{ac} (except $p = 0$: from ρ). Distinct behaviors for $p = 0$ and ~ 2 GPa are confirmed [compared to a specific heat study by Lengyel *et al.* (Ref. 19)], but around p_V another regime appears, with an initial slope $|dH_{c2}/dT|_{T=T_c}$ closer to that at $p = 0$ [see also Fig. 5(b)]. Previous resistivity data from Vargoz *et al.* (Ref. 3), available for $p = 0$ and p_V for a sample of the same batch, confirm this latest trend. (Inse) Example of raw data (inverse of the thermocouple voltage) under field at 4.3 GPa, used to determine the different H - T phase diagrams. Note that for $p \geq 4.9$ GPa no superconducting anomaly is detected by C^{ac} down to 0.1 K.

risers again (to even higher values than at $p = 0$, see above). It hence appears questionable whether the behavior at only ~ 2 GPa is representative of the critical VF regime, as implied by the presumed symmetry change of the superconducting order parameter.¹⁹ On the present data basis, a further evolution with increasing p toward p_V cannot be excluded. For sure, the robustness against H is first lowered by p and then rises again for $2 \text{ GPa} < p \lesssim p_V$. This trend is supported by an anterior report from Vargoz *et al.*³ on a crystal of the same batch (original ρ data represented by red and dark blue lines in Fig. 9), where the initial slopes for $p \sim 0$ and $p \sim p_V$ roughly match. Notice that the Pauli limiting field ($T \rightarrow 0$) seems slightly weakened for $p \rightarrow p_V$, pointing to an increasing g factor.³ Finally, the evolution with p of the superconducting order parameter symmetry may be easier tracked by angle-dependent measurements.

D. Transverse resistivity: Hall effect

In Fig. 10 we display the T dependence of the transverse resistivity (Hall effect) $\rho_{xy}(T)$ at 8 T and for several p up to 6.8 GPa (data systematically antisymmetrized with respect to H), the H dependence $\rho_{xy}(H)$ is exemplified at ~ 4 GPa in Fig. 13(a) for different T . At $p = 0$ the measured T dependence is roughly in line with the literature^{46,49,50} [except for the sign compared to Ref. 46] with a maximum at ~ 2 K, possibly pointing to the T_{coh} energy scale, comparable to that inferred from magnetoresistance data (see above). For a precise analysis of the ordinary and the anomalous contribution due to skew scattering, data above 4 K would be necessary and should be compared to magnetic susceptibility measurements.^{50,51} This is particularly true for higher p , where we did not reach the maximum in $\rho_{xy}(T)$, shifted to

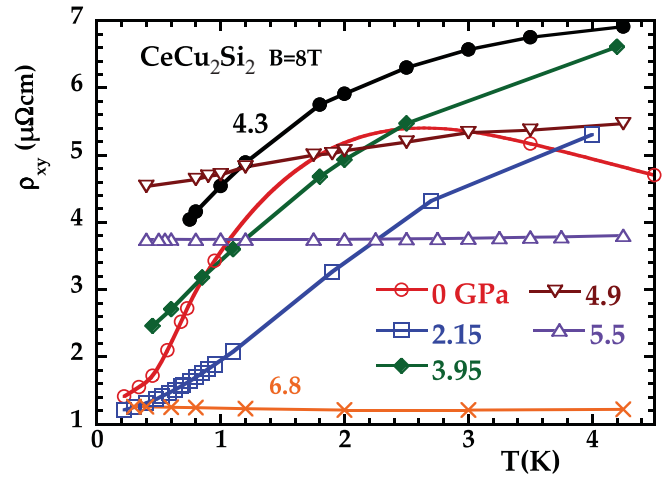


FIG. 10. (Color online) T -dependence of the transverse resistivity (Hall signal) $\rho_{xy}(8 \text{ T})$ at several p up to 6.8 GPa. At $p = 0$ a maximum is observed around 2 K, possibly reflecting the T_{coh} energy scale. With increasing p and at low T , the positive curvature evolves subsequently into a T -linear and a T -independent behavior, whereas $\rho_{xy}(T \rightarrow 0)$ appears maximum at a p slightly above p_V (displayed in Fig. 3), similar to $\rho_0(p)$ [Fig. 5(b)] (lines are guides for the eye only).

$T > 4$ K (Ref. 50) and following the increase of T_K (and hence of T_{coh}) with p [see the p shift of the maximum in $\rho(T)$ (Fig. 4)]. Here we report for the first time on a CeCu_2Si_2 single crystal the p dependence of ρ_{xy} at low T and across the region of the $4f$ electron delocalization, where it exhibits a prominent maximum (Fig. 3). Its position does not depend on the extraction from high or low field data, due to an almost H -linear Hall voltage [Fig. 13(a)]; its value is about one order of magnitude higher than that of LaCu_2Si_2 (Ref. 52). As can easily be deduced from Fig. 10 the strongest Hall signal corresponds to 4.3 and 4.9 GPa, depending on the T range; below 1 K the maximum in $\rho_{xy}(p)$ clearly lies beyond that of $T_c(p)$, as shown in Fig. 3 at 0.75 K and 8 T. This shift points to a Hall signal more sensitive to the VCO itself, mimicking $\rho_0(p)$.⁹ In contrast, the *maxima* in $T_c(p)$ and $A(p)$ rather appear for $p \lesssim p_V$, the domain of strongest VF⁹ (see above). For $p > p_V$, the decrease of $\rho_{xy}(p)$ is quite steep, like that of $T_c(p)$ or $A(p)$, reflecting the departure from the critical region. The T dependence $\rho_{xy}(T \rightarrow 0)$ also clearly changes over the whole p range [from positive curvature over T linear at p_V toward almost T independent (Fig. 10)]. Interestingly, an enhancement of ρ_{xy} at low T is also reported in CeRhIn_5 close to the critical pressure $p_c \sim p_V$ and discussed in the light of the backflow effect in strongly correlated materials.⁴⁸ Further calculations within the critical VF scenario are currently carried out and may connect on a microscopic basis the observed increase of $\rho_{xy}(p)$ in vicinity of p_V with the $4f$ electron delocalization and the proximity to the CEP in CeCu_2Si_2 .

E. Thermoelectric properties I: Thermopower

Let us now concentrate on the thermoelectric properties, S and N . Starting with the (longitudinal) thermopower (Seebeck coefficient), our data [Figs. 3, 11, and 14(a)–14(c)] generally

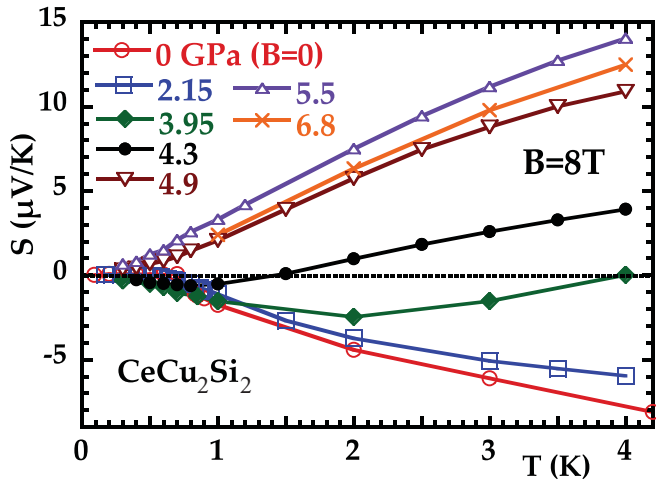


FIG. 11. (Color online) T dependence of the thermoelectric power $S(8T)$ at several p up to 6.8 GPa. Remarkably, a sign change from negative to positive takes place around 4 GPa within the entire investigated T range. For $0 < p < 5$ GPa, $S(8T)$ remains negative down to the lowest available T . The p -dependent sensitivity on magnetic field is displayed in Figs. 14(a)–14(c) (lines are guides for the eye only).

agree with previous reports,^{6,46,53} except that at $p = 0$ we obtain a slightly smaller signal from the A phase (not shown) compared to Ref. 53. Apart from this small positive contribution below 1 K, the thermopower signal is negative, before getting positive around 70 K with a subsequent maximum at about 150 K, Ref. 6. Even if a generic behavior is absent in the thermoelectric response of HF materials, it seems to be more or less characteristic^{54–56} for Ce compounds close to the magnetic instability that at low T a negative contribution competes with the more ordinary positive contribution (related to the T_K and T_{CEF} energy scales) to S . Hence, a reduction of this negative component is expected when p is applied, since an increasing hybridization generally favors the nonmagnetic

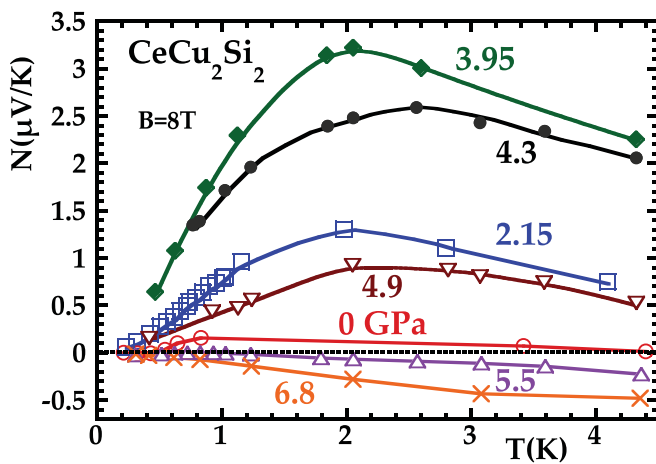


FIG. 12. (Color online) T dependence of the Nernst signal $N(8T)$ at several p up to 6.8 GPa. As a function of p , the Nernst signal first increases, with a maximum at 4 GPa (see Fig. 3), before decreasing again and even switching to negative values at high p . Below 5 GPa, a characteristic energy scale may be revealed through the maximum in $N(T)$ around 2 K (lines are guides for the eye only).

HF Kondo lattice state (screened $4f$ electrons), eventually followed by a mixed valence state. This phenomenon has already been observed experimentally⁶ on a broad T scale up to 300 K and 8 GPa, demonstrating the continuous decrease and subsequent vanishing of the negative component. Here we concentrate on the low- T region, for the first time in the presence of a magnetic field (to avoid the superconducting shunt). As a key feature, $S(p, 2 \text{ K}, 8 \text{ T})$ changes sign precisely in the region where $T_c(p)$ and $A(p)$ are maximum [see Figs. 3 and 5(b)]: Like in a naive picture, $S(p)$ seems related to the derivative of the density of states. Whether this sign-change of thermopower is intimately coupled to the $4f$ electron delocalization, or occurs rather accidentally in this p region, is left for further studies. In particular, future band structure calculations or Fermi surface investigations under p may help to better identify the role of the VCO for the intriguing behavior of $S(p, T, H)$. Close to 6 GPa, $S(p, 2 \text{ K}, 8 \text{ T})$ finally has a maximum itself (Fig. 3), the downturn occurring only at the highest examined p . Surprisingly, our results seem not compatible with previous systematics,⁵⁷ which would expect $S/T(T \rightarrow 0) \sim N_A e / \gamma$, where $N_A e = 9.6 \times 10^5 \text{ C mol}^{-1}$ is the Faraday number and γ the Sommerfeld coefficient of specific heat. From our data in the vicinity of p_V , S remains negative down to the lowest available T (for $H \neq 0$), except for $p > 5$ GPa. Possibly, positive values are recovered at much lower T , since the characteristic energy scale of the system may be markedly reduced around p_V . On the same footing, the Seebeck coefficient displays a strong H dependence in the vicinity of p_V , in contrast to lower and higher p , as shown in Figs. 14(a)–14(c). The difference in the sensitivity on magnetic field is particularly striking between 4 GPa with $|S(8T) - S(0T)|/S(0T) \sim 1.75$ at 3 K Fig. 14(b)] and the H -independent $S(T)$ at 6.8 GPa [Fig. 14(c)]. The observation of such a feature in $S(H)$ close to a valence instability clearly points to a low characteristic energy scale and a peculiar behavior around p_V , as mentioned above; however, its physical origin may be difficult to unveil independently from other probes since it involves both transport and thermodynamic properties of the system.

F. Thermoelectric properties II: Nernst effect

Last but not least let us comment on the transverse thermoelectric voltage in the presence of a perpendicular magnetic field, the Nernst effect [Figs. 3, 12, and 13(b)]. In a semiclassical, single-band Boltzmann picture, the quasiparticle contribution to the Nernst signal relies on the energy dependence of the relaxation time.^{58,59} Indeed, the appearance of a transverse electric field has its origin in the different relaxation times of the charge carriers involved in the heat current (induced by the applied T gradient) and the charge carriers responsible of the compensating counterflow. In ordinary metals, the relaxation time depends only weakly on energy, so that the Nernst signal is usually quite small (so-called Sondheimer cancellation⁶⁰). Assuming a linear energy dependence around the Fermi level, a simplified expression for the Nernst coefficient $\nu = N/B$ can be found⁵⁹: $\nu/T = \frac{\pi^2 k_B}{3e} (= 283 \text{ } [\mu\text{V/K}]) \cdot \frac{\mu}{E_F/k_B}$ (μ : carrier mobility). Hence, a high mobility or a low Fermi energy can naturally lead to an enhanced Nernst signal, the latter case being often

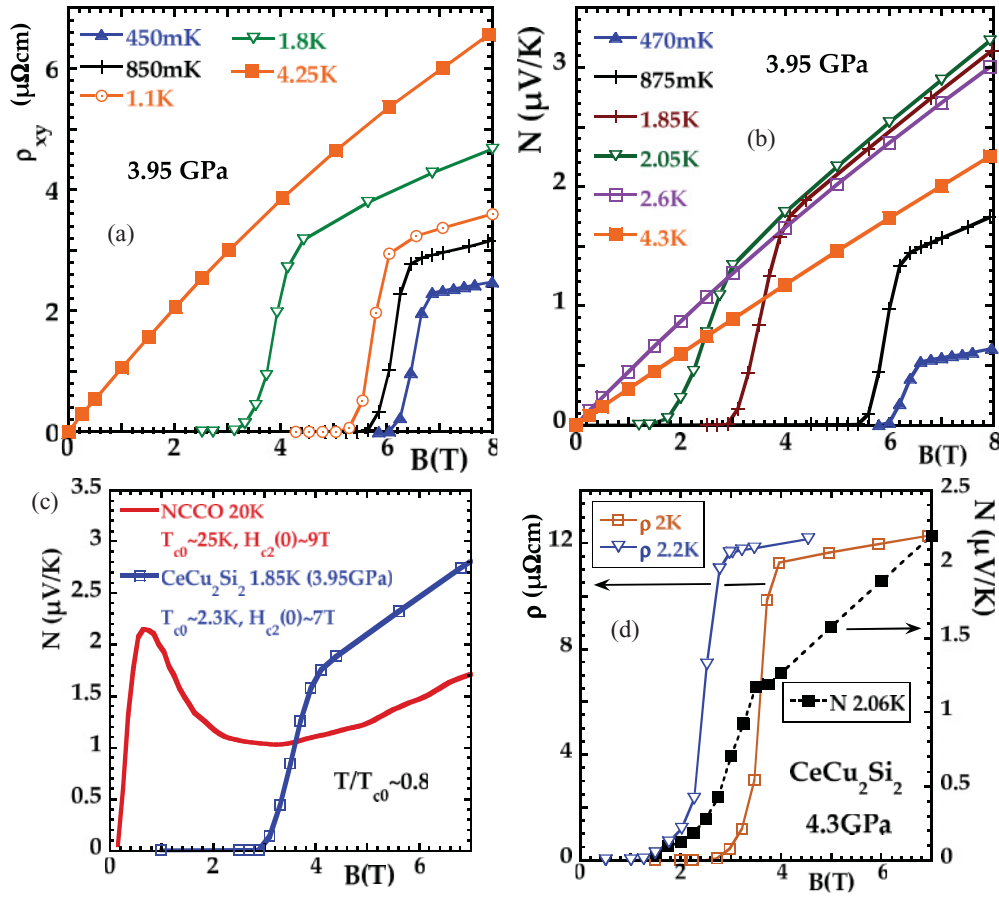


FIG. 13. (Color online) (a) H dependence of the Hall signal ρ_{xy} at different T and 3.95 GPa; minor deviations from a linear behavior appear only at high fields. (b) Almost linear H dependence of the Nernst signal N at different T and 3.95 GPa. (c) Contrasting field dependence $N(H)$ in NCCO (from Ref. 15) and CeCu_2Si_2 (3.95 GPa) at comparable T/T_{c0} and H_{c2} . While a strong contribution from moving vortices leads to an increase of N_{NCCO} below H_{c2} , $N_{\text{CeCu}_2\text{Si}_2}(H)$ simply follows $\rho(H)$ and vanishes. (d) The typical transition width of $N(H)$ at H_{c2} roughly corresponds to the applied thermal gradient of 5%–10%, as shown at ~ 2 K and 4.3 GPa (lines are guides for the eye only).

realized in HF compounds,⁵⁹ for example, in CeCoIn_5 (Refs. 61–63). However, in CeCu_2Si_2 at ambient p , we only observe a tiny $N < 0.2 \mu\text{V/K}$ at low T and under 8 T (Fig. 12 and Ref. 13). A sign change is observed below 1 K, likely related to the A phase, and around 4 K, like in magnetoresistance. Here we are particularly interested in a possible signature of the $4f$ electron delocalization around p_V . In this respect, as a function of p , the most intriguing feature is a strong enhancement toward p_V , leading to a pronounced peak that coincides with the maximum in $T_c(p)$ (Figs. 3 and 12). Its value is more than one order of magnitude higher than at $p = 0$ and roughly corresponds to half of the giant N measured in CeCoIn_5 .⁶¹ In addition, $N(T)$ exhibits a maximum around 2 K for $p < 5$ GPa and independent of H , most likely revealing a characteristic energy scale (Fig. 12). For $p \sim p_V$, this assumption is reinforced by a negative peak also around 2 K in $S(T, H \neq 0)$ (Fig. 11). For $p > p_V$, N behaves in a more “conventional” manner (smaller values, roughly T linear), and it changes sign to negative. Let us add that generally a H -linear Nernst voltage is observed, as exemplified at 4 GPa in Fig. 13(b). We have also investigated the above relationship between v/T and $\frac{\mu}{E_F/k_B}$ in the low- T limit⁵⁹ (note that solely rough estimations for E_F are available): CeCu_2Si_2 approaches

the universal curve only at p_V , next to CeRu_2Si_2 (which may not be surprising since transport data show similarities⁶⁴). However, away from p_V (especially for $p \rightarrow 0$), the tiny N inevitably drives the corresponding data quite off the universal line, yielding a slope different from $283[\mu\text{V/K}]$.

Apart from the quasiparticles, moving vortices in the mixed phase of a superconductor can also give rise to a transverse voltage,^{65,66} which is directly related to their velocity. This phenomenon has been extensively studied in the high- T_c superconductors, known to exhibit a strong enhancement of N in the vortex-liquid state.^{15,67,68} In contrast, no sizable vortex contribution to N has yet been detected in HF systems (see, for example, Ref. 61); that is, the vortices are assumed to be immobile. CeCu_2Si_2 does not deviate from this trend. In Fig. 13(c) we compare the field dependence of the Nernst signal in NCCO (from Ref. 15) and CeCu_2Si_2 at a similar ratio of $T/T_c^{H=0} \sim 0.8$ (the $T \rightarrow 0$ limit of H_{c2} is of the same order of magnitude in both compounds). While in CeCu_2Si_2 $N(H)$ simply follows the vanishing $\rho(H)$ [taking into account the applied thermal gradient of 5%–10% responsible for the transition width, Fig. 13(d)], the Nernst signal of NCCO increases within the mixed state, due to a significant vortex contribution.

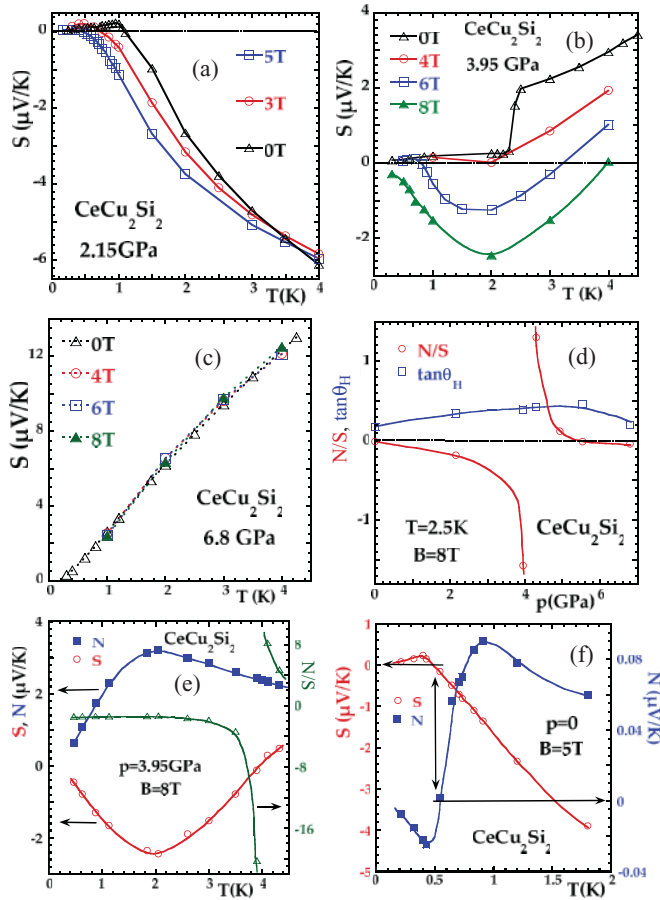


FIG. 14. (Color online) Panels (a) to (c) p dependence of the sensitivity on magnetic field of the thermopower signal in CeCu_2Si_2 , varying from weak at low p over strong around p_V to absent at high p . (d) While the thermoelectric ratio $N/S = \tan \theta_{\text{TE}}$ exhibits an anomaly around 4 GPa, the electric analog $\tan \theta_{\text{H}}$ displays a smooth p dependence. (e) This “divergence” at 4 GPa, a consequence of the sign change of thermopower (open circles), can also be observed in the T dependence $N/S(T)$ (open triangles, right-hand scale). (f) In other cases, like at $p = 0$ and crossing the A phase boundary, S and N change sign simultaneously, preventing any “divergence” (lines are guides for the eye only).

Another interesting feature appears when comparing the magnetothermal electric fields E_x (longitudinal, probed by S) and E_y (transverse, probed by N) [see Fig. 2(a)]. For some specific points in the T - p - H space, particularly in vicinity to p_V and under high magnetic field, E_x vanishes (sign change as already discussed above), whereas the transverse field E_y stays finite. Such a situation is exemplified at 2.5 K and 8 T in Fig. 14(d), where the ratio $N/S (= \tan \theta_{\text{TE}})$ “diverges” as a function of p around 4 GPa, and it is also seen in the T dependence of N/S , shown at 4 GPa in Fig. 14(e). In other words, the electric field produced by a longitudinal heat current becomes exclusively transverse. Whether this happens accidentally and is simply related to the fact that S and N probe quite different phenomena in a complex multiband system evolving under p , or whether the orthogonal electric field occurs for more profound reasons, possibly linked to the $4f$ electron delocalization at p_V , is left for further studies. At this stage, we can only make the following comments: A

similar trend has been reported in CeCoIn_5 in the low- H and $-T$ limit⁶¹ (but it is partly masked by SC). There a strongly energy-dependent elastic scattering rate had been invoked to explain the low Seebeck and large Nernst coefficients. Returning back to CeCu_2Si_2 , in contrast to the “divergence” in N/S , no anomaly is detected in the p dependence of the purely electric analog $\rho_{xy}/\rho (= \tan \theta_{\text{H}})$, as also shown in Fig. 14(d) and which may be trivial since ρ cannot change sign. Simultaneous measurements of S and N are not yet common in Ce compounds, and in the rare other reported cases (see, for example, Refs. 69 and 70), or like in CeCu_2Si_2 at $p = 0$, $B = 5$ T, and 550 mK (conditions corresponding to the transition into the A phase), the sign change of S coincides with a vanishing N [illustrated in Fig. 14(f)], so that no “divergence” occurs.

IV. CONCLUSION

In conclusion, we have performed for the first time a multiprobe study under high pressure on a CeCu_2Si_2 single crystal with a unprecedented high superconducting T_C and low ρ_0 in order to deepen the understanding of the expected Ce $4f$ electron delocalization at 4 GPa. A careful resistivity analysis unveils the proximity of CeCu_2Si_2 to the CEP of the VT line, located at $p \sim 4.5$ GPa and a slightly negative temperature. This means that CeCu_2Si_2 lies entirely in the VCO regime and does not exhibit a FOVT down to lowest temperatures. However, around p_V and below about 30 K the complete $\rho(p)$ data set is governed by this adjacent CEP, leading to a noteworthy data collapse. In addition to the CEP, the experimentally determined VCO line has been added as an important feature to the p - T phase diagram of CeCu_2Si_2 (Fig. 1).

As an extraordinary tool, the new multiprobe setup [Fig. 2(a)] gives access to a huge parameter space, in which diverse physical quantities like ρ , C^{ac} , ρ_{xy} , S , and N can be simultaneously compared on a single sample and under extreme conditions (low temperatures, high pressures, and magnetic field). It should stimulate the detailed exploration of a variety of systems in strongly correlated matter. In CeCu_2Si_2 , apart from resistivity, ρ_{xy} , S , and N may also be considerably affected by the underlying CEP since they reveal pronounced anomalies close to p_V (Fig. 3), highlighting an important change in the ground-state properties of the system. It still needs to be elucidated whether these features are solely linked to the Ce $4f$ electron delocalization or are rather specific to the case where VF-mediated SC is present, like in CeCu_2Si_2 . An extended theoretical framework and more experimental data under pressure from different probes will help to better identify these complex signatures and their relationship to the electron delocalization.

Overall, this study brings the scenario of SC mediated by VF to the front in HF physics, and further studies may reveal its widespread relevance, *even in the more common case where p_c and p_V are not well separated.*

ACKNOWLEDGMENTS

We acknowledge fruitful discussions with K. Behnia and J. Flouquet, technical assistance from M. Lopes, and financial support from the Swiss National Science Foundation.

*gabriel@seyfarth.net

[†]Also at Centre de Physique Théorique, École Polytechnique, CNRS, 91128 Palaiseau Cedex, France; Collège de France, 11 place Marcelin Berthelot, 75005 Paris, France.

- ¹F. Steglich, J. Aarts, C. D. Bredl, W. Lieke, D. Meschede, W. Franz, and H. Schäfer, *Phys. Rev. Lett.* **43**, 1892 (1979).
- ²D. Jaccard, H. Wilhelm, K. Alami-Yadri, and E. Vargoz, *Physica B* **259–261**, 1 (1999).
- ³E. Vargoz, D. Jaccard, J. Genoud, J.-P. Brison, and J. Flouquet, *Solid State Commun.* **106**, 631 (1998).
- ⁴A. T. Holmes, Ph.D. thesis, Université de Genève, 2004, <http://archive-ouverte.unige.ch/unige:284>.
- ⁵M. J. Lipp, D. Jackson, H. Cynn, C. Aracne, W. J. Evans, and A. K. McMahan, *Phys. Rev. Lett.* **101**, 165703 (2008).
- ⁶D. Jaccard, J. Mignot, B. Bellarbi, A. Benoit, H. Braun, and J. Sierro, *J. Magn. Magn. Mater.* **47&48**, 23 (1985).
- ⁷A. T. Holmes, D. Jaccard, and K. Miyake, *Phys. Rev. B* **69**, 024508 (2004).
- ⁸A. T. Holmes, D. Jaccard, and K. Miyake, *J. Phys. Soc. Jpn.* **76**, 051002 (2007).
- ⁹K. Miyake, *J. Phys.: Condens. Matter* **19**, 125201 (2007).
- ¹⁰S. Watanabe and K. Miyake, *J. Phys.: Condens. Matter* **23**, 094217 (2011).
- ¹¹A. Jayaraman, *Phys. Rev.* **137**, A179 (1965).
- ¹²G. Bruls, B. Wolf, D. Finsterbusch, P. Thalmeier, I. Kouroudis, W. Sun, W. Assmus, B. Lüthi, M. Lang, K. Gloos, F. Steglich, and R. Modler, *Phys. Rev. Lett.* **72**, 1754 (1994).
- ¹³A.-S. Rüetschi, K. Sengupta, G. Seyfarth, and D. Jaccard, *J. Phys.: Conf. Ser.* **273**, 012052 (2011).
- ¹⁴A.-S. Rüetschi and D. Jaccard, *Rev. Sci. Instrum.* **78**, 123901 (2007).
- ¹⁵Y. Wang, S. Ono, Y. Onose, G. Gu, Y. Ando, Y. Tokura, S. Uchida, and N. P. Ong, *Science* **299**, 86 (2003).
- ¹⁶Y. Wang, L. Li, and N. P. Ong, *Phys. Rev. B* **73**, 024510 (2006).
- ¹⁷F. J. Blatt, *Solid State Phys.* **4**, 199 (1957).
- ¹⁸F. Steglich, P. Gegenwart, C. Geibel, R. Helfrich, P. Hellmann, M. Lang, A. Link, R. Modler, G. Sparn, N. Büttgen, and A. Loidl, *Physica B* **223&224**, 1 (1996).
- ¹⁹E. Lengyel, M. Nicklas, H. S. Jeevan, G. Sparn, C. Geibel, F. Steglich, Y. Yoshioka, and K. Miyake, *Phys. Rev. B* **80**, 140513 (2009).
- ²⁰P. Monthoux and G. G. Lonzarich, *Phys. Rev. B* **69**, 064517 (2004).
- ²¹J.-P. Rueff, S. Raymond, M. Taguchi, M. Sikora, J.-P. Itié, F. Baudalet, D. Braithwaite, G. Knebel, and D. Jaccard, *Phys. Rev. Lett.* **106**, 186405 (2011).
- ²²K. Fujiwara, Y. Hata, K. Kobayashi, K. Miyoshi, J. Takeuchi, Y. Shimaoka, H. Kotegawa, T. C. Kobayashi, C. Geibel, and F. Steglich, *J. Phys. Soc. Jpn.* **77**, 123711 (2008).
- ²³H. Q. Yuan, F. M. Grosche, M. Deppe, G. Sparn, C. Geibel, and F. Steglich, *Phys. Rev. Lett.* **96**, 047008 (2006).
- ²⁴H. Q. Yuan, F. M. Grosche, M. Deppe, C. Geibel, G. Sparn, and F. Steglich, *Science* **302**, 2104 (2003).
- ²⁵D. Jaccard and A. T. Holmes, *Physica B* **359–361**, 333 (2005).
- ²⁶P. Monthoux, D. Pines, and G. G. Lonzarich, *Nature (London)* **450**, 1177 (2007).
- ²⁷P. Limelette, A. Georges, D. Jérôme, P. Wzietek, P. Metcalf, and J. M. Honig, *Science* **302**, 89 (2003).
- ²⁸J. M. Lawrence, M. C. Croft, and R. D. Parks, *Phys. Rev. Lett.* **35**, 289 (1975).
- ²⁹H. Wilhelm and D. Jaccard, *Phys. Rev. B* **66**, 064428 (2002).
- ³⁰H. Wilhelm and D. Jaccard, *Phys. Rev. B* **69**, 214408 (2004).
- ³¹H. Wilhelm, S. Raymond, D. Jaccard, O. Stockert, and H. v. Löhneysen, e-print [arXiv:cond-mat/9908442v1](https://arxiv.org/abs/cond-mat/9908442v1).
- ³²T. Muramatsu, N. Tateiwa, T. C. Kobayashi, K. Shimizu, K. Amaya, D. Aoki, H. Shishido, Y. Haga, and Y. Ōnuki, *J. Phys. Soc. Jpn.* **70**, 3362 (2001).
- ³³G. Knebel, D. Aoki, J.-P. Brison, and J. Flouquet, *J. Phys. Soc. Jpn.* **77**, 114704 (2008).
- ³⁴T. Park, V. A. Sidorov, F. Ronning, J.-X. Zhu, Y. Tokiwa, H. Lee, E. D. Bauer, R. Movshovich, J. L. Sarrao, and J. D. Thompson, *Nature (London)* **456**, 366 (2008).
- ³⁵E. Vargoz and D. Jaccard, *J. Magn. Magn. Mater.* **177–181**, 294 (1998).
- ³⁶E. Vargoz, Ph.D. thesis, Université de Genève, 1998.
- ³⁷C. Capan, A. Bianchi, F. Ronning, A. Lacerda, J. D. Thompson, M. F. Hundley, P. G. Pagliuso, J. L. Sarrao, and R. Movshovich, *Phys. Rev. B* **70**, 180502 (2004).
- ³⁸C. Capan, L. Balicas, T. P. Murphy, E. C. Palm, R. Movshovich, D. Hall, S. W. Tozer, M. F. Hundley, E. D. Bauer, J. D. Thompson, J. L. Sarrao, J. F. DiTusa, R. G. Goodrich, and Z. Fisk, *Phys. Rev. B* **80**, 094518 (2009).
- ³⁹J. L. Sarrao, C. D. Immer, Z. Fisk, C. H. Booth, E. Figueroa, J. M. Lawrence, R. Modler, A. L. Cornelius, M. F. Hundley, G. H. Kwei, J. D. Thompson, and F. Bridges, *Phys. Rev. B* **59**, 6855 (1999).
- ⁴⁰S. Wada, A. Yamamoto, K. Ishida, and J. L. Sarrao, *J. Phys.: Condens. Matter* **20**, 175201 (2008).
- ⁴¹F. Thomas, C. Ayache, I. A. Fomine, J. Thomasson, and C. Geibel, *J. Phys.: Condens. Matter* **8**, L51 (1996).
- ⁴²E. Lengyel, M. Nicklas, H. S. Jeevan, C. Geibel, and F. Steglich, *Phys. Rev. Lett.* **107**, 057001 (2011).
- ⁴³A. T. Holmes, D. Jaccard, H. S. Jeevan, C. Geibel, and M. Ishikawa, *J. Phys.: Condens. Matter* **17**, 5423 (2005).
- ⁴⁴T. Park, H. Lee, I. Martin, X. Lu, V. A. Sidorov, K. Gofryk, F. Ronning, E. D. Bauer, and J. D. Thompson, *Phys. Rev. Lett.* **108**, 077003 (2012).
- ⁴⁵U. Rauchschwalbe, F. Steglich, A. de Visser, and J. Franse, *J. Magn. Magn. Mater.* **63&64**, 347 (1987).
- ⁴⁶F. G. Aliev, N. B. Brandt, V. V. Moshchalkov, and S. M. Chudinov, *J. Low Temp. Phys.* **57**, 61 (1984).
- ⁴⁷A. Pippard, *Magneto-resistance in Metals* (Cambridge University Press, Cambridge, 1989).
- ⁴⁸Y. Nakajima, H. Shishido, H. Nakai, T. Shibauchi, K. Behnia, K. Izawa, M. Hedo, Y. Uwatoko, T. Matsumoto, R. Settai, Y. Ōnuki, H. Kontani, and Y. Matsuda, *J. Phys. Soc. Jpn.* **76**, 024703 (2007).
- ⁴⁹Y. Ōnuki, T. Yamazaki, T. Omi, I. Ukon, A. Kobori, and T. Komatsubara, *J. Phys. Soc. Jpn.* **58**, 2126 (1989).
- ⁵⁰S. Araki, Y. Shiroyama, Y. Ikeda, T. C. Kobayashi, S. Seiro, C. Geibel, and F. Steglich, *J. Phys. Soc. Jpn.* **80**, SA061 (2011).
- ⁵¹A. Fert and P. M. Levy, *Phys. Rev. B* **36**, 1907 (1987).
- ⁵²F. Aliev, N. Brandt, V. Moshchalkov, and S. Chudinov, *Solid State Commun.* **47**, 693 (1983).
- ⁵³G. Sparn, W. Lieke, U. Gottwick, F. Steglich, and N. Grewe, *J. Magn. Magn. Mater.* **47&48**, 521 (1985).
- ⁵⁴K. H. Fischer, *Z. Phys. B* **76**, 315 (1989).
- ⁵⁵P. Link, D. Jaccard, and P. Lejay, *Physica B* **225**, 207 (1996).
- ⁵⁶V. Zlatić, B. Horvatić, I. Milat, B. Coqblin, G. Czycholl, and C. Grenzbach, *Phys. Rev. B* **68**, 104432 (2003).

- ⁵⁷K. Behnia, D. Jaccard, and J. Flouquet, *J. Phys.: Condens. Matter* **16**, 5187 (2004).
- ⁵⁸V. Oganesyan and I. Ussishkin, *Phys. Rev. B* **70**, 054503 (2004).
- ⁵⁹K. Behnia, *J. Phys.: Condens. Matter* **21**, 113101 (2009).
- ⁶⁰E. H. Sondheimer, *Proc. R. Soc. London, Ser. A* **193**, 484 (1948).
- ⁶¹R. Bel, K. Behnia, Y. Nakajima, K. Izawa, Y. Matsuda, H. Shishido, R. Settai, and Y. Onuki, *Phys. Rev. Lett.* **92**, 217002 (2004).
- ⁶²Y. Onose, Lu Li, C. Petrovic, and N. P. Ong, *Europhys. Lett.* **79**, 17006 (2007).
- ⁶³K. Izawa, K. Behnia, Y. Matsuda, H. Shishido, R. Settai, Y. Onuki, and J. Flouquet, *Phys. Rev. Lett.* **99**, 147005 (2007).
- ⁶⁴A. Amato, D. Jaccard, J. Sierro, P. Haen, P. Lejay, and J. Flouquet, *J. Low Temp. Phys.* **77**, 195 (1989).
- ⁶⁵P. R. Solomon and F. A. Otter, *Phys. Rev.* **164**, 608 (1967).
- ⁶⁶R. P. Huebener and A. Seher, *Phys. Rev.* **181**, 701 (1969).
- ⁶⁷H.-C. Ri, R. Gross, F. Gollnik, A. Beck, R. P. Huebener, P. Wagner, and H. Adrian, *Phys. Rev. B* **50**, 3312 (1994).
- ⁶⁸Z. A. Xu, N. P. Ong, Y. Wang, T. Kakeshita, and S. Uchida, *Nature (London)* **406**, 486 (2000).
- ⁶⁹A. Pourret, K. Behnia, D. Kikuchi, Y. Aoki, H. Sugawara, and H. Sato, *Phys. Rev. Lett.* **96**, 176402 (2006).
- ⁷⁰N. Johansen, S. Süllow, A. V. Sologubenko, T. Lorenz, and J. A. Mydosh, *Phys. Rev. B* **78**, 121103 (2008).