



Extreme sensitivity of superconductivity to stoichiometry in $\text{Fe}_{1+\delta}\text{Se}$

T. M. McQueen,¹ Q. Huang,² V. Ksenofontov,³ C. Felser,³ Q. Xu,⁴ H. Zandbergen,⁴ Y. S. Hor,¹ J. Allred,¹ A. J. Williams,¹ D. Qu,⁵ J. Checkelsky,⁵ N. P. Ong,⁵ and R. J. Cava¹

¹Department of Chemistry, Princeton University, Princeton, New Jersey 08544, USA

²NIST Center for Neutron Research, National Institute of Standards and Technology, Gaithersburg, Maryland 20899, USA

³Institut für Anorganische Chemie und Analytische Chemie, Johannes Gutenberg-Universität, Staudinger Weg 9, D-55099 Mainz, Germany

⁴National Centre for HREM, Department of Nanoscience, Delft Institute of Technology, 2628 CJ Delft, The Netherlands

⁵Department of Physics, Princeton University, Princeton, New Jersey 08544, USA

(Received 2 December 2008; published 29 January 2009)

The recently discovered iron arsenide superconductors appear to display a universal set of characteristic features, including proximity to a magnetically ordered state and robustness of the superconductivity in the presence of disorder. Here we show that superconductivity in $\text{Fe}_{1+\delta}\text{Se}$, which can be considered the parent compound of the superconducting arsenide family, is destroyed by very small changes in stoichiometry. Further, we show that nonsuperconducting $\text{Fe}_{1+\delta}\text{Se}$ is not magnetically ordered down to 5 K. These results suggest that robust superconductivity and immediate instability against an ordered magnetic state should not be considered as intrinsic characteristics of iron-based superconducting systems.

DOI: 10.1103/PhysRevB.79.014522

PACS number(s): 74.70.-b, 81.30.Dz

I. INTRODUCTION

Superconductivity was discovered in 2008 in $\text{LaFeAsO}_{1-x}\text{F}_x$ (Ref. 1) with a T_c of 26 K. The superconductivity in this arsenide, and the previously reported $\text{LaFePO}_{1-x}\text{F}_x$,² is unexpected because most Fe-based compounds display magnetic ordering at low temperatures. This family of superconductors, based on Fe_2X_2 ($X=\text{P}, \text{As}$) layers of edge-sharing FeX_4 tetrahedra, has expanded to include doped but oxygen-free systems, including K^+/Na^+ -doped AFe_2As_2 ($A=\text{Ba}, \text{Sr}, \text{Ca}$) (Refs. 3 and 4) and $(\text{Li}, \text{Na})_x\text{FeAs}$.^{5,6} Recently, superconductivity at 8 K has been reported⁷ in chemically analogous FeSe in its tetragonal form. [β - FeSe ; recent publications have referred to this, improperly, as the α form. In phase diagrams and the original literature, it is the β form that is tetragonal (cf. Refs. 8 and 9), although a few, e.g., Ref. 10, refer to tetragonal FeSe as the α form. α is used here to designate the stoichiometric NiAs -type variant.] The superconductivity is reported to increase to 27 K under modest pressure.¹¹ The Fe_2Se_2 layers in β - FeSe (inset of Fig. 1) are analogous to the Fe_2As_2 and Fe_2P_2 layers in the pnictide and oxypnictide superconductors. The initial report attributed the superconductivity to a highly selenium deficient phase, $\text{FeSe}_{0.82}$ ($\text{Fe}_{1.22}\text{Se}$).⁷ This was quickly followed by a combined x-ray and neutron-diffraction study that arrived at a composition of $\text{FeSe}_{0.92(1)}$ ($\text{Fe}_{1.09}\text{Se}$) (Ref. 12) for the superconductor. Both of these formulas fall well outside the narrow composition range, $\text{Fe}_{1.01}\text{Se}$ - $\text{Fe}_{1.04}\text{Se}$, reported for β - FeSe more than 30 years ago.^{13,14} Here we show that when prepared so as to prevent the formation of spurious oxides and oxygen defects in the phase, superconducting β - FeSe is much closer to stoichiometric than the recent reports indicate. Further, we find that the superconducting transition temperature is critically dependent on extremely small changes in the iron stoichiometry. The highest transition temperatures, $T_c \sim 8.5$ K, are found when the compound is closest to stoichiometric, with

formula β - $\text{Fe}_{1.01}\text{Se}$. With a little more iron excess, at composition β - $\text{Fe}_{1.02}\text{Se}$, T_c drops to 5 K and, with slightly more iron, β - $\text{Fe}_{1.03}\text{Se}$ is nonsuperconducting down to 0.6 K. Nonsuperconducting β - $\text{Fe}_{1.03}\text{Se}$ does not exhibit a long-range ordered magnetic state but only the suggestion of spin fluctuations at low temperature. Subtle differences in the structure indicate that there may be a difference in defect chemistry between superconducting and nonsuperconducting compositions. Our results indicate that superconductivity in β - FeSe is only borderline stable and that it does not directly compete with a magnetically ordered state.

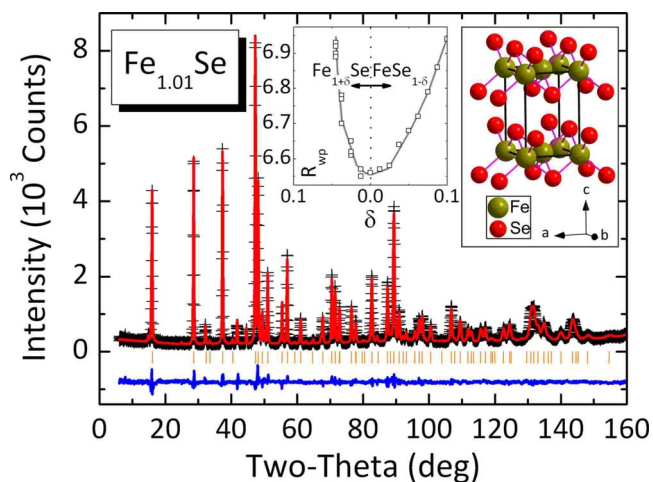


FIG. 1. (Color online) Rietveld refinement of 298 K NPD data of β - $\text{Fe}_{1.01}\text{Se}$ -300 °C. The left inset shows the fit statistic R_{wp} plotted versus Fe-interstitials (left) and Se vacancies (right). From these data it is not possible to determine the origin of the 1% nonstoichiometry, but this shows that the formula of superconducting β - FeSe must be within $\sim 2\%$ of stoichiometric. The right inset shows the structure of β - FeSe .

II. EXPERIMENTAL

Except for “Fe_{1.06}Se” (see below), all samples were prepared from iron pieces (Johnson-Matthey, 99.98%) and selenium shot (Alfa-Aesar, 99.999%). Stoichiometric quantities of freshly polished iron and selenium shot were loaded into cleaned and dried silica tubes and sealed under vacuum with a piece of cleaned carbon inside (but not in physical contact with the sample). These tubes were sealed in a second evacuated silica ampoule and placed in a furnace at 750 °C. The temperature was held constant until the Se vapor had disappeared (3–5 days) and then increased to 1075 °C for 3 days, followed by a fast decrease to 420 °C. This temperature was held for 2 days before the tubes were quenched in –13 °C brine. Small pieces were then loaded into small silica ampoules and annealed at various temperatures (300–500 °C) for 2 days followed by quenching in –13 °C brine. Fast quenching was required for reproducible behavior. All samples are stable for short periods of time in air but were protected from oxidation in air by storage in an argon glove box. ⁵⁷Fe Mössbauer spectra were recorded in a transmission geometry using a conventional constant-acceleration spectrometer and a helium bath cryostat. The Recoil Mössbauer Analysis software was used to fit the experimental spectra. Isomer shift values are quoted relative to α -Fe at 293 K. dc magnetization measurements were performed on a Quantum Design physical property measurement system (QD-PPMS) using powdered samples to minimize demagnetization effects. Based on low-field $M(H)$ curves at 2 K, the absolute error in the dc magnetization values is estimated to be less than 10%. High-resolution neutron powder-diffraction (NPD) data were collected using the BT-1 high-resolution powder diffractometer at the NIST Center for Neutron Research, employing a Cu (311) monochromator to produce a monochromatic neutron beam of wavelength 1.5403 Å. Collimators with horizontal divergences of 15', 20', and 7' full width at half maximum were used before and after the monochromator and after the sample, respectively. The intensities were measured in steps of 0.05° in the 2θ range of 3° – 168°. The structure analysis was performed using the program GSAS with EXPGUI.^{15,16} The neutron-scattering amplitudes used in the refinements were 0.945 and 0.797×10^{-12} cm for Fe and Se, respectively. Specific-heat measurements were done on polycrystalline pellets in a QD-PPMS equipped with a ³He refrigerator. Resistivity measurements were done in an Oxford cryostat using the four probe method at a frequency of 13 Hz and a current of 0.1 mA. Thermopower measurements were done using a custom-built helium probe head (a MMR sample stage reduced in size to fit in the cryogenic probe) and MMR technologies electronics. The double reference measurement technique was used, with constantan wire as the reference. X-ray powder diffraction (XRD) was done using a Bruker D8-Focus employing Cu $K\alpha$ radiation with a diffracted beam monochromator.

III. RESULTS AND DISCUSSION

Our initial attempts to prepare phase-pure β -FeSe employed the methods recently described,^{7,12} starting with

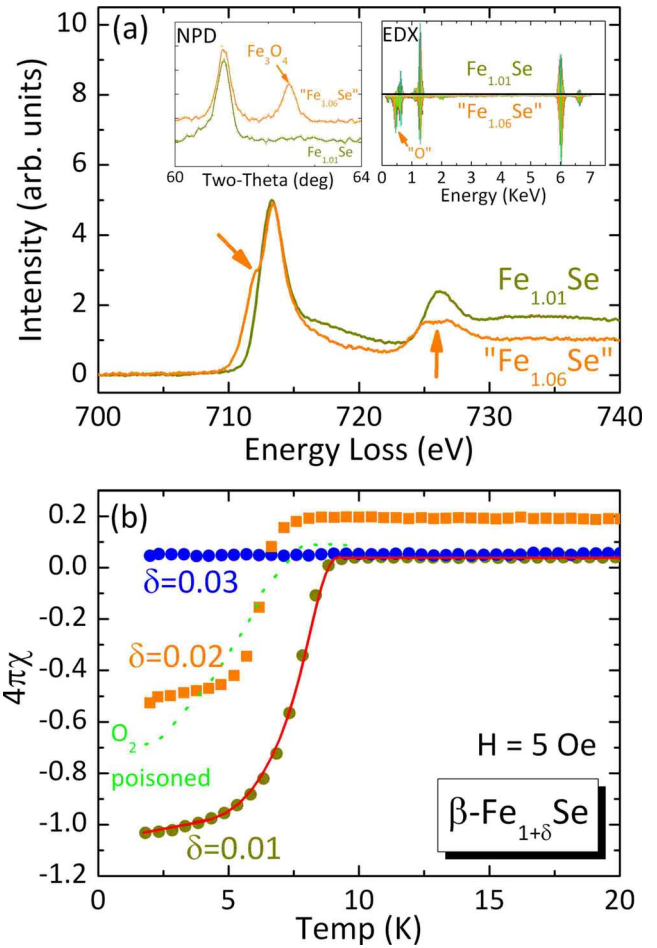


FIG. 2. (Color online) (a) EELS, NPD (left inset), and EDX (right inset) data on β -Fe_{1.01}Se and Fe_{1.06}Se. The EDX analysis on crystallites of the β -Fe_{1+ δ} Se phase in the transmission electron microscope shows the presence of oxygen in Fe_{1.06}Se, and the EELS data of the L_3 and L_2 peaks confirm that the oxygen is bonded to the iron (arrows). This is in addition to the Fe₃O₄ present in Fe_{1.06}Se. (b) Low field susceptibility data of various Fe_xSe samples, showing that β -Fe_{1.03}Se is nonsuperconducting and that superconductivity improves going from β -Fe_{1.02}Se to β -Fe_{1.01}Se. For comparison, the susceptibility of a sample poisoned with oxygen, similar to previous work, is also shown (dashed line).

“freshly cleaned” Fe (Alfa-Aesar, 99.95%) in powder form. In agreement with those reports, we found that a significant iron excess, in our case Fe_{1.06}Se, was needed to make a sample that appeared to be “phase pure” by laboratory XRD. When prepared from very clean starting materials, however, specifically taking care to exclude oxygen (see above), we found that the composition needed to yield a single phase specimen was close to Fe_{1.01}Se. The origin of this discrepancy was studied using several techniques. Figure 2(a) shows, in the left inset, a region of the NPD patterns for samples of Fe_{1.06}Se and Fe_{1.01}Se, revealing that the sample prepared from Fe powder (“Fe_{1.06}Se”) is contaminated with Fe₃O₄,¹⁷ observed because NPD is more sensitive than laboratory XRD to the presence of impurities. The presence of iron oxide explains why excess iron is needed to obtain a “pure” specimen under normal synthetic conditions. Further-

TABLE I. Refined structural parameters for two samples of β -FeSe at 298 K from powder neutron data. Space group $P4/nmm$ (No. 129). Atomic positions: Fe: $2a$ ($3/4, 1/4, 0$), Se: $2c$ ($1/4, 1/4, z$). Lattice parameters are in units of \AA and thermal parameters are in units of 10^{-2}\AA^2 . $\text{Fe}_{1.06}\text{Se}$ contains small secondary phases of Fe and Fe_3O_4 . The β - $\text{Fe}_{1.01}\text{Se}$ sample employed contains very small amounts of Fe, Fe_7Se_8 , and α -FeSe.

		$\text{Fe}_{1.06}\text{Se}$	$\text{Fe}_{1.01}\text{Se}$
	a	3.7747(1)	3.7734(1)
	c	5.5229(1)	5.5258(1)
Fe	U_{11}	0.87(2)	0.63(3)
	U_{33}	2.02(4)	2.41(5)
	Occ.	0.987(6)	0.997(3)
Se	U_{iso}	1.35(3)	1.31(3)
	z	0.2669(2)	0.2672(1)
	χ^2	1.727	2.117
	R_{wp}	6.42%	6.56%
	R_{p}	5.15%	5.30%
	$R(F^2)$	6.04%	7.42%

more, energy-dispersive x-ray (EDX) spectroscopy measurements in the transmission electron microscope on crystallites of the β -FeSe phase from $\text{Fe}_{1.06}\text{Se}$ [Fig. 2(a), right inset] showed substantial oxygen contamination. Electron energy-loss spectroscopy (EELS) of the iron L_3 and L_2 edges [Fig. 2(a)] confirms that there is significant oxidation of the iron in $\text{Fe}_{1.06}\text{Se}$, i.e., oxygen is bound to the iron atoms within the β -FeSe such that the formula is $\text{Fe}_{1+\delta}\text{SeO}_y$. EDX and EELS on a $\text{Fe}_{1.01}\text{Se}$ sample ($\text{Fe}_{1.01}\text{Se}$ annealed at 300 °C) made from very clean starting materials show no oxygen by EDX and no unexpected oxidation of the iron by EELS [Fig. 2(a)].

The composition of the β -FeSe phase was confirmed to be nearly stoichiometric by Rietveld refinements of NPD data on both $\text{Fe}_{1.06}\text{Se}$ and $\text{Fe}_{1.01}\text{Se}$ annealed at 300 °C. When freely refined, the composition of the tetragonal phase in $\text{Fe}_{1.06}\text{Se}$ is nearly stoichiometric (Table I, col. 1), and a similar result was obtained for $\text{Fe}_{1.01}\text{Se}$ (Table I, col. 2 and Fig. 1). To best determine the stoichiometry and to see if we could locate the origin of any nonstoichiometry, we performed free fits to the data as a function of fixed doping levels, with excess iron in interstitial sites¹⁸ and with selenium vacancies. The refinement agreement statistics R_{wp} (minimum for the best agreement) for those refinements as a function of hypothetical stoichiometry are plotted in the inset of Fig. 1. The best agreement is centered at the stoichiometric FeSe composition, with the breadth of the minimum indicating a composition of $\text{Fe}_{1.01\pm 0.02}\text{Se}$. Thus, although these measurements do not have sufficient sensitivity to determine the stoichiometry to better than ± 0.02 , the nearly ideal stoichiometry of the β -FeSe phase, in agreement with the results in the older literature,^{13,14} is clearly confirmed. The compositions $\text{Fe}_{1.09}\text{Se}$ (Ref. 12) and $\text{Fe}_{1.22}\text{Se}$ (Ref. 7) are not consistent with these data, as the refinement statistics are

markedly worse (near the top right of the right inset, Fig. 1 for $\text{Fe}_{1.09}\text{Se}$ with Se vacancies, and off scale for $\text{Fe}_{1.22}\text{Se}$).

The magnetic characterization of the superconducting transition in a selection of our samples, measured by low-field dc magnetization, is shown in Fig. 2(b). The data show that $\text{Fe}_{1.01}\text{Se}$ prepared at a temperature of 300 °C is a superconductor with a sharp transition near ~ 8.5 K. This is in contrast to a sample poisoned with oxygen (dashed line, similar to the original literature report⁷). Furthermore, a sample that is slightly more iron rich, $\text{Fe}_{1.02}\text{Se}$ annealed at 380 °C, shows a reduced T_c . Finally superconductivity is absent for $\text{Fe}_{1.03}\text{Se}$ annealed at 400 °C. This reflects an extreme dependence of the superconducting properties on preparative conditions, including stoichiometry and temperature.

Our data indicate that the superconductivity, the stoichiometry, and the crystal structure are correlated in the β -FeSe-type phase. Figure 3(a) shows the superconducting transition temperature T_c versus the crystallographic c/a ratio for a number of the samples in this system. Several features are evident. Samples prepared at lower temperatures or with lower iron content display c/a ratios just above 1.464 and also display the highest transition temperatures. Higher iron contents or higher synthesis temperatures yield larger c/a ratios and reduced T_c 's. Samples prepared with the highest iron content, $\text{Fe}_{1.03}\text{Se}$, show no superconductivity to 0.6 K, irrespective of the synthesis temperature. These samples also display abnormally small c/a ratios near 1.461. Two distinct structure/superconductivity regions are therefore clearly seen in Fig. 3(a). The inset of Fig. 3(a) shows the dependence of the c/a ratio on starting composition for two representative preparation temperatures. In both cases, c/a initially rises with increasing Fe content, but by the composition $\text{Fe}_{1.03}\text{Se}$ the c/a ratio is much reduced.

We postulate that this peculiar dependence of c/a ratio on iron content and the accompanying dramatic disappearance of superconductivity for $\text{Fe}_{1.03}\text{Se}$ are due to a change in how the nonstoichiometry is accommodated in the phase. The most likely scenario is a change from Se vacancies at low Fe excess to Fe interstitials at high Fe excess. This may also explain why the c/a ratio changes for a given nominal composition as the synthesis temperature is changed—the stability of the different types of defects is no doubt temperature dependent. Further studies will be of interest to elucidate the origin of this behavior.

On the basis of these experiments, we construct a phase diagram for the Fe-Se system near the 1:1 stoichiometry in Fig. 3(b). Samples quenched from above 455 °C contain significant fractions of three phases (not possible for equilibrium conditions in a binary system). This is consistent with the proposal in the old literature that iron-rich hexagonal δ -FeSe, stable at high temperatures, converts to tetragonal FeSe on cooling.⁸ Thus we assign 455 °C as the upper limit of temperature stability for β -FeSe. This agrees well with the reported decomposition temperature of 457 °C.⁹ Additionally, we find that β -FeSe is unstable at low temperatures: there is a slow conversion of the tetragonal β - $\text{Fe}_{1+\delta}\text{Se}$ phase to a hexagonal NiAs structure-type (α -FeSe) phase, with larger lattice parameters than are found for “ Fe_7Se_8 (Ref. 19),” below approximately 300 °C. This hexagonal phase is

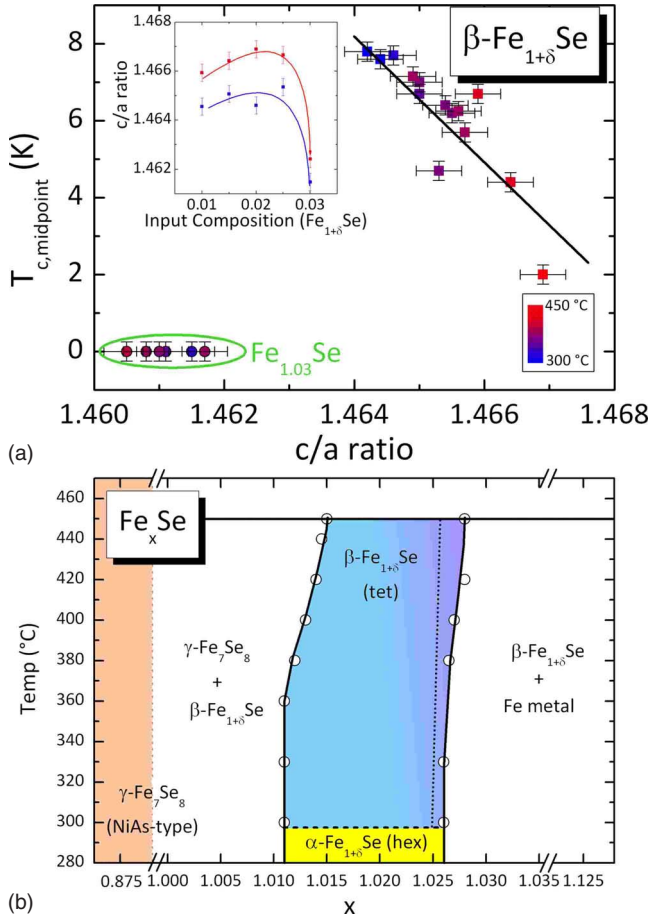


FIG. 3. (Color online) (a) Dependence of superconducting temperature (defined as the midpoint of the dc susceptibility transition) on c/a ratio. The inset shows the dependence of c/a ratio on synthesis temperature and nominal composition. (b) Phase diagram derived from the samples shown in (a) and others (not shown). Actual compositions of the samples were estimated from the fraction of impurity phases present (Fe_7Se_8 and Fe metal) by XRD and/or room temperature $M(h)$ curves. Below 300 °C, $\beta\text{-Fe}_{1+\delta}\text{Se}$ slowly converts to $\alpha\text{-Fe}_x\text{Se}$, which has the NiAs structure type and is non-superconducting above 1.8 K. The c/a ratios of $\beta\text{-FeSe}$ also suggest a change in defect type as Fe content increases within the phase (represented by the vertical dotted line and shading).

non-superconducting down to 0.6 K. Since the best superconducting properties of the $\beta\text{-Fe}_{1+\delta}\text{Se}$ phase appear with the lowest iron contents at the lowest synthesis temperatures, this conversion to the NiAs form at low temperatures ultimately puts a limit on the maximum T_c obtainable in this system.

Further evidence of the extreme dependence of the properties of $\beta\text{-Fe}_{1+\delta}\text{Se}$ on stoichiometry and preparation conditions can be seen in the low-temperature specific heats, which are shown for four compositions, $\text{Fe}_{1.01}\text{Se}$ -300 °C, $\text{Fe}_{1.01}\text{Se}$ -330 °C, $\text{Fe}_{1.02}\text{Se}$ -380 °C, and $\text{Fe}_{1.03}\text{Se}$ -400 °C, in Fig. 4. The raw data clearly show the presence of excess specific heat associated with the superconducting transition and that T_c moves to lower temperatures with increasing iron excess. Quantitative analysis of the electronic and magnetic contributions to the specific heat requires the removal of the

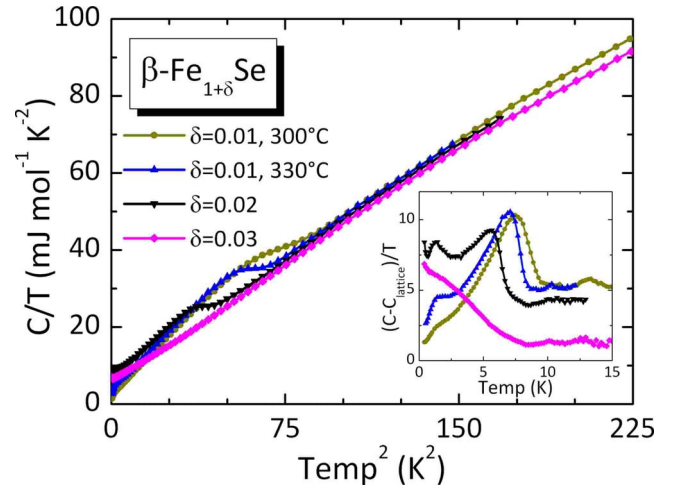


FIG. 4. (Color online) Low-temperature specific heat of $\beta\text{-Fe}_{1.01}\text{Se}$ -300 °C, $\beta\text{-Fe}_{1.01}\text{Se}$ -330 °C, $\beta\text{-Fe}_{1.02}\text{Se}$ -380 °C, and $\beta\text{-Fe}_{1.03}\text{Se}$ -400 °C. The inset shows the data after subtraction of a lattice contribution (see text).

lattice contribution, which cannot be done in the usual fashion in this system because no portions of the C/T vs T^2 plots are linear, implying that the lattice contribution is not simply given by $\beta_3 T^3$ up to 15 K. As such, we fit the 10–15 K region of $\text{Fe}_{1.01}\text{Se}$ -300 °C to $C = \gamma T + \beta_3 T^3 + \beta_5 T^5$, where the first term accounts for the normal-state electronic contribution, and the second and third terms account for the lattice contribution. Parameters are given in Table II. The Debye temperature calculated from β_3 is $\theta_D = 200$ K. (This explains why $\beta_3 T^3$ is not sufficient to account for the lattice contribution, as $\beta_3 T^3$ is generally only good up to $\frac{\theta_D}{50} = 4$ K.²⁰) Subtracting the lattice contribution with the fitted β_3 and β_5 values gives the residual electronic contribution, shown in the inset of Fig. 4. The normal-state Sommerfeld coefficient is then estimated as $\gamma = 5.4(3)$ $\text{mJ mol}^{-1} \text{K}^{-2}$. A very well-defined sharp transition to the superconducting state is seen. From this data, using the equal entropy construction, we estimate that the normalized specific-heat jump at T_c is $\Delta C / \gamma T_c = 1.3(1)$, which is in good agreement with the BCS expected value of 1.4. This confirms the bulk nature of the superconductivity below 8.5 K in $\text{Fe}_{1.01}\text{Se}$ -300 °C. The amount of excess entropy lost near T_c is well balanced by the entropy difference between the normal and superconducting states at low temperature, therefore supporting the validity of the lattice subtraction.

Surprisingly, the data show (inset of Fig. 4) that there is a second specific-heat anomaly at 1 K in the optimal superconducting sample. To characterize the dependence of this

TABLE II. Values obtained from fits of the 10–15 K regions of the heat capacity of $\text{Fe}_{1.01}\text{Se}$ -300 °C and $\text{Fe}_{1.03}\text{Se}$ to $C = \gamma T + \beta_3 T^3 + \beta_5 T^5$ (see text).

	γ ($\text{mJ mol}^{-1} \text{K}^{-2}$)	β_3 ($\text{mJ mol}^{-1} \text{K}^{-4}$)	β_5 ($\text{mJ mol}^{-1} \text{K}^{-6}$)
$\text{Fe}_{1.01}\text{Se}$ -300 °C	5.4(3)	0.463(5)	$-2.8(2) \times 10^{-4}$
$\text{Fe}_{1.03}\text{Se}$	1.3(6)	0.496(8)	$-4.2(2) \times 10^{-4}$

anomaly on the stoichiometry, specific-heat data on three other samples are also shown. A fit of the 10–15 K region of the specific heat of $\text{Fe}_{1.03}\text{Se}$ to $C = \gamma T + \beta_3 T^3 + \beta_5 T^5$ gives parameters that are similar to those obtained for $\text{Fe}_{1.01}\text{Se}$ -300 °C (Table II). The origin of the differences is unclear; the lower Sommerfeld coefficient may reflect a change in the electronic state of $\text{Fe}_{1.03}\text{Se}$. The differences in β_3 and β_5 may indicate that there are extra contributions to the specific heat (e.g., spin fluctuations). Since the data on the intermediate samples do not extend to sufficiently high temperatures (15 K) to permit separate fits of the high-temperature region to remove the lattice contributions, we employed the approximation that the lattice contributions to the specific heat (the β_3 and β_5 parameters) for superconducting $\text{Fe}_{1.02}\text{Se}$ -380 °C and $\text{Fe}_{1.01}\text{Se}$ -330 °C are the same as for $\text{Fe}_{1.01}\text{Se}$ -300 °C and employ the as-fit parameters for $\text{Fe}_{1.03}\text{Se}$ (the qualitative features mentioned below do not change when the same β_3 and β_5 terms are used for all samples), and the results are presented in the inset of Fig. 4. As Fe content increases to $x=1.02$, the superconducting anomaly shifts to lower temperature and decreases in magnitude. Simultaneously, the 1 K anomaly increases dramatically. In $\text{Fe}_{1.03}\text{Se}$ -400 °C, the 1 K anomaly is not present and a third kind of behavior is observed—a slowly rising specific heat with decreasing temperature. This contribution is also likely present in the $\text{Fe}_{1.02}\text{Se}$ sample. The low-temperature upturn in $\text{Fe}_{1.02}\text{Se}$ -380 °C and $\text{Fe}_{1.03}\text{Se}$ -400 °C are qualitatively consistent with spin fluctuations but may also be attributable to lattice defects, small amounts of impurity phases, or some type of very low-temperature magnetic ordering. The electronic contribution to the specific heat seems to decrease as Fe content is increased. Further studies are needed to determine the origin of these low-temperature specific-heat anomalies and to confirm the change in the electronic contribution.

Temperature-dependent resistivity measurements on $\text{Fe}_{1.01}\text{Se}$ -300 °C and $\text{Fe}_{1.03}\text{Se}$ -400 °C show differences between the superconducting and nonsuperconducting stoichiometries of $\beta\text{-Fe}_{1+\delta}\text{Se}$ (Fig. 5). $\text{Fe}_{1.01}\text{Se}$ -300 °C displays metallic resistivity, with a residual resistivity ratio (RRR) of 10, reasonable for a measurement on a polycrystalline metallic sample. It also shows a superconducting transition at 9 K, consistent with the susceptibility and specific heat measurements. Furthermore, there is a kink near 90 K (see inset of Fig. 5), corresponding to the temperature of the previously reported structural transition.¹² In contrast, $\text{Fe}_{1.03}\text{Se}$ -400 °C shows a broad feature in the resistivity around 90 K and no superconductivity. Furthermore, the magnitude of the resistivity at room temperature is higher, and the RRR (=2) is reduced when compared to $\text{Fe}_{1.01}\text{Se}$ -300 °C. These observations are consistent with the presence of a larger number of defects in the higher Fe content phase. Despite the substantial effect of stoichiometry on the resistivity, the Seebeck coefficients (α) are qualitatively similar for superconducting and nonsuperconducting $\beta\text{-Fe}_{1+\delta}\text{Se}$ (inset of Fig. 5). In both cases, α is small and positive at room temperature, changes sign near 230 K, and goes through a broad (negative) maximum near the structural phase transition around 90 K. Like in the resistivity, the transition around 90 K appears broadened in $\text{Fe}_{1.03}\text{Se}$, but they are otherwise very similar. The

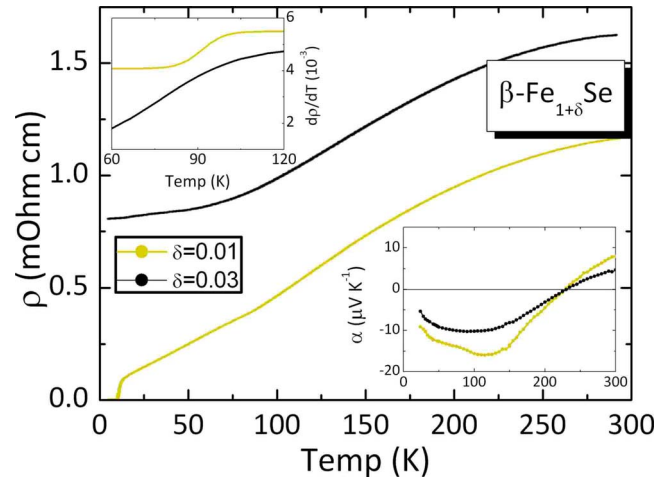


FIG. 5. (Color online) Resistivity data show that $\beta\text{-Fe}_{1.01}\text{Se}$ are a good metal with a superconducting transition near 9 K whereas $\beta\text{-Fe}_{1.03}\text{Se}$ is metallic but with a low residual resistivity ratio. $\beta\text{-Fe}_{1.01}\text{Se}$ shows a change in slope around 90 K, corresponding to the temperature of the previously reported structural distortion (Ref. 12), but the transition in $\beta\text{-Fe}_{1.03}\text{Se}$ is broadened (first derivative plotted in top inset). Bottom inset: the Seebeck coefficient of $\beta\text{-Fe}_{1.01}\text{Se}$ and $\beta\text{-Fe}_{1.03}\text{Se}$ are similar in magnitude and change sign around 230 K. They also show a change at the structural phase transition, but the transition in $\beta\text{-Fe}_{1.03}\text{Se}$ is significantly broader. This suggests that defects have a substantial impact on the phase transition.

change in sign implies that electrons and holes contribute nearly equally to the conduction. Additionally, the broadening of the kink near 90 K in both data sets suggests that the change in defects on going from $\beta\text{-Fe}_{1.01}\text{Se}$ to $\beta\text{-Fe}_{1.03}\text{Se}$ may be having an impact on the structural phase transition.

To determine whether the state competing with superconductivity in $\beta\text{-FeSe}$ has a magnetic origin, we employ Mössbauer spectroscopy as a sensitive local probe for the presence of magnetism at the iron sites. Representative spectra are shown in Fig. 6. Despite the large differences in the superconducting properties, the Mössbauer spectra for all the oxygen-free samples²¹ are very similar. A single quadrupole paramagnetic doublet is sufficient to describe all the spectra. The hyperfine parameters (Table III) agree well with those previously found.¹⁰ The quadrupole splitting can be attributed to the distortion from tetragonal symmetry of the local surrounding of iron atoms. The isomer shift and quadrupole splitting are both increased at 80 K (below the symmetry-lowering phase transition¹²) but are then essentially unchanged at 5 K, whether the sample is superconducting or not. The linewidths do increase slightly on cooling [$\Gamma = 0.15(1)$ mm/s at 295 K and $\Gamma = 0.19(1)$ mm/s at 5 K], but this is expected. More importantly, although the linewidth of the doublet in $\beta\text{-Fe}_{1.03}\text{Se}$ may be marginally larger than that in $\beta\text{-Fe}_{1.01}\text{Se}$ at 5 K (Fig. 5), the spectrum does not display the additional dramatic splitting (into a sextet) expected for an ordered magnetic phase. This is in sharp contrast to undoped LaOFeAs , for example, which shows a clear splitting of the Mössbauer spectrum into a sextet below the spin-density wave (SDW) transition.²² This shows that the electronic state in $\beta\text{-Fe}_{1.03}\text{Se}$ is not magnetically ordered in na-

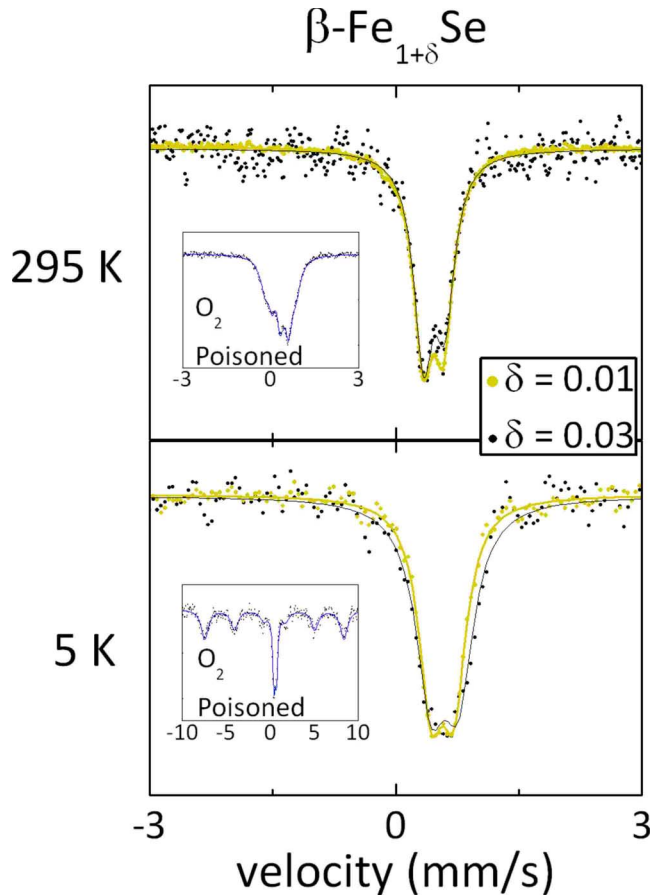


FIG. 6. (Color online) ^{57}Fe Mössbauer spectra at 295 and 5 K. There are no significant differences between $\beta\text{-Fe}_{1.01}\text{Se}$ and $\beta\text{-Fe}_{1.03}\text{Se}$ despite the fact that $\beta\text{-Fe}_{1.01}\text{Se}$ is superconducting at 8.5 K and $\beta\text{-Fe}_{1.03}\text{Se}$ shows no superconductivity above 0.6 K. There is no sign of magnetic ordering in these samples. Extra magnetic contributions to the Mössbauer spectra only appear in samples poisoned with oxygen (data shown in insets).

ture. The presence of magnetic fluctuations on a time scale shorter than the Mössbauer time scale (10^{-7} s) cannot be ruled out, but there is no long-range magnetic ordering at 5 K.

IV. CONCLUSION

Our results indicate that the superconductivity in $\beta\text{-FeSe}$ is very sensitive to composition and disorder even though many of the basic characteristics of the superconducting and nonsuperconducting compositions are quite similar. That a

TABLE III. Mössbauer isomer shift and quadrupole splitting values for select $\beta\text{-Fe}_{1+\delta}\text{Se}$ samples at various temperatures.

	T	$\beta\text{-Fe}_{1.01}\text{Se}$	$\beta\text{-Fe}_{1.03}\text{Se}$
	δ (mm/s)	0.46(1)	0.47(1)
295 K	ΔE_Q (mm/s)	0.25(2)	0.26(1)
	δ (mm/s)	0.57(1)	0.55(2)
80 K	ΔE_Q (mm/s)	0.29(2)	0.30(2)
	δ (mm/s)	0.57(1)	0.59(3)
5 K	ΔE_Q (mm/s)	0.30(1)	0.34(3)

small number of defects is important is surprising because the high upper critical field [800 kOe (Ref. 7)] and chemical similarity to the FeAs-based superconductors implies that superconductivity in $\beta\text{-FeSe}$ should be more robust. This sensitivity to defects likely extends to other members of this family and may explain the conflicting reports about superconductivity in stoichiometric LaFePO_4 .^{2,23–26} Furthermore, the fact that we do not observe magnetic ordering down to 5 K in nonsuperconducting $\beta\text{-Fe}_{1.03}\text{Se}$ implies either that $\beta\text{-FeSe}$ is fundamentally different from the FeAs-based compounds or that superconductivity does not directly arise from a competing ordered magnetic state in all members of this superconducting family (spin correlations are not ruled out). The former seems unlikely, as density-functional theory calculations on FeSe (Ref. 27) show the same general features as in the FeAs systems—namely, a highly two-dimensional Fermi surface and propensity for SDW behavior. If the latter is the case, it then implies that magnetically ordered and superconducting states are not as transparently related in this family as they currently appear. It may be that further doping (beyond the limits of the binary phase diagram) will eventually induce a SDW state in $\beta\text{-FeSe}$ and that $\beta\text{-Fe}_{1.03}\text{Se}$ is in an intermediate state such as the pseudogap state in the cuprates or the quantum critical state in other systems. As such, these results suggest that understanding the electronic state of $\beta\text{-Fe}_{1.03}\text{Se}$ will be critical in understanding the superconductivity in the iron-based systems as a whole.

ACKNOWLEDGMENTS

The work at Princeton was supported primarily by the U.S. Department of Energy, Division of Basic Energy Sciences, Grant No. DE-FG02-98ER45706, and, in part, by the NSF MRSEC program, Grant No. DMR-0819860. T.M.M. gratefully acknowledges support of the National Science Foundation Graduate Research Fellowship program.

¹Y. Kamihara, T. Watanabe, M. Hirano, and H. Hosono, *J. Am. Chem. Soc.* **130**, 3296 (2008).

²Y. Kamihara, H. Hiramatsu, M. Hirano, R. Kawamura, H. Yanagi, T. Kamiya, and H. Hosono, *J. Am. Chem. Soc.* **128**, 10012 (2006).

³M. Rotter, M. Tegel, and D. Johrendt, *Phys. Rev. Lett.* **101**, 107006 (2008).

⁴K. Sasmal, B. Lv, B. Lorenz, A. M. Guloy, F. Chen, Y. Y. Xue, and C. W. Chu, *Phys. Rev. Lett.* **101**, 107007 (2008).

⁵J. H. Tapp, Z. Tang, B. Lv, K. Sasmal, B. Lorenz, P. C. W. Chu,

- and A. M. Guloy, Phys. Rev. B **78**, 060505(R) (2008).
- ⁶D. R. Parker, M. J. Pitcher, and S. J. Clarke, arXiv:0810.3214 (unpublished).
- ⁷F. C. Hsu, J. Y. Luo, K. W. Yeh, T. K. Chen, T. W. Huang, P. M. Wu, Y. C. Lee, Y. L. Huang, Y. Y. Chu, D. C. Yan, and M. K. Wu, Proc. Natl. Acad. Sci. U.S.A. **105**, 14262 (2008).
- ⁸B. K. Jain, A. K. Singh, and K. Chandra, J. Phys. F: Met. Phys. **8**, 2625 (1978).
- ⁹F. Gronvold, Acta Chem. Scand. (1947-1973) **22**, 1219 (1968).
- ¹⁰T. Tsuji, A. T. Howe, and N. N. Greenwood, J. Solid State Chem. **17**, 157 (1976).
- ¹¹Y. Mizuguchi, F. Tomioka, S. Tsuda, T. Yamaguchi, and Y. Takano, Appl. Phys. Lett. **93**, 152505 (2008).
- ¹²S. Margadonna, Y. Takabayashi, M. T. McDonald, K. Kasperkiewicz, Y. Mizuguchi, Y. Takano, A. N. Fitch, E. Suard, and K. Prassides, Chem. Commun. (Cambridge) **2008**, 5607.
- ¹³H. Okamoto, J. Phase Equilib. **12**, 383 (1991).
- ¹⁴W. Schuster, H. Mikler, and K. L. Komarek, Monatsch. Chem. **110**, 1153 (1979).
- ¹⁵A. C. Larson and R. B. Von Dreele, Los Alamos National Laboratory LAUR Report No. 86, 2000 (unpublished).
- ¹⁶B. H. Toby, J. Appl. Crystallogr. **34**, 210 (2001).
- ¹⁷This small level of contamination does not show up in a laboratory x-ray diffraction scan due to the high scattering power of Se compared to Fe and O.
- ¹⁸Each doping level was tried in four different interstitial sites: *2b* (interlayer tetrahedral sites), *2c* ($z=-z(\text{Se})$, Cu₂Sb-like), *2c* ($z\sim 0.5$, interstitials in square pyramids), *4e* (interstitials in distorted octahedra).
- ¹⁹This actually has a wide compositional range. See the known phase diagrams [Refs. **11** and **12**].
- ²⁰A. Tari, *The Specific Heat of Matter at Low Temperatures* (Imperial College, London, 2003).
- ²¹Oxygen-contaminated samples do show magnetic behavior in the Mössbauer spectra (insets of Fig. **6**).
- ²²S. Kitao, Y. Kobayashi, S. Higashitaniguchi, M. Saito, Y. Kamihara, M. Hirano, T. Mitsui, H. Hosono, and M. Seto, J. Phys. Soc. Jpn. **77**, 103706 (2008).
- ²³T. M. McQueen, M. Regulacio, A. J. Williams, Q. Huang, J. W. Lynn, Y. S. Hor, D. V. West, M. A. Green, and R. J. Cava, Phys. Rev. B **78**, 024521 (2008).
- ²⁴M. Tegel, I. Schellenberg, R. Poettgen, and D. Johrendt, arXiv:0805.1208 (unpublished).
- ²⁵C. Y. Liang, R. C. Che, H. X. Yang, H. F. Tian, R. J. Xiao, J. B. Lu, R. Li, and J. Q. Li, Supercond. Sci. Technol. **20**, 687 (2007).
- ²⁶J. G. Analytis, J.-H. Chu, A. S. Erickson, C. Kucharczyk, A. Serafin, A. Carrington, C. Cox, S. M. Kauzlarich, H. Hope, and I. R. Fisher, arXiv:0810.5368 (unpublished).
- ²⁷A. Subedi, L. Zhang, D. J. Singh, and M. H. Du, Phys. Rev. B **78**, 134514 (2008).