

Doping dependence of the Fermi surface in $(\text{Bi,Pb})_2\text{Sr}_2\text{CaCu}_2\text{O}_{8+\delta}$ A. A. Kordyuk,^{1,2} S. V. Borisenko,¹ M. S. Golden,^{1,*} S. Legner,¹ K. A. Nenkov,¹ M. Knupfer,¹ J. Fink,¹ H. Berger,³ L. Forró,⁴ and R. Follath⁵¹*Institute for Solid State and Materials Research Dresden, P.O. Box 270016, D-01171 Dresden, Germany*²*Institute of Metal Physics of National Academy of Sciences of Ukraine, 03142 Kyiv, Ukraine*³*Institut de Physique Appliquée, Ecole Polytechnique Fédérale de Lausanne, CH-1015 Lausanne, Switzerland*⁴*DP/IGA, Ecole Polytechnique Fédérale de Lausanne, CH-1015 Lausanne, Switzerland*⁵*BESSY GmbH, Albert-Einstein-Strasse 15, 12489 Berlin, Germany*

(Received 14 August 2001; published 20 June 2002)

A detailed and systematic angle-resolved photoemission spectroscopy investigation of the doping dependence of the normal-state Fermi surface (FS) of modulation-free $(\text{Pb,Bi})\text{-}2212$ is presented. The FS does not change in topology away from hole like at any stage. The FS area does not follow the usual curve describing T_c vs x for the hole-doped cuprates, but is downshifted in doping by ca. 0.05 holes per Cu site, indicating the consequences of a significant bilayer splitting of the FS across the whole doping range. The strong k dependence of the FS width is shown to be doping independent. The relative strength of the shadow FS has a doping dependence mirroring that of T_c .

DOI: 10.1103/PhysRevB.66.014502

PACS number(s): 74.25.Jb, 71.18.+y, 74.72.Hs, 79.60.-i

The shape and topology of the Fermi surface (FS) of the high-temperature superconductors (HTSC's), and in particular of the $\text{Bi}_2\text{Sr}_2\text{CaCu}_2\text{O}_{8+\delta}$ (Bi-2212)-based systems, have been a hot topic from the very beginning of the HTSC era^{1,2} and are still the subject of lively discussion today.³⁻⁵ In the past, the existence of a large, hole like FS's in angle-resolved photoemission spectroscopy (ARPES) was taken as support for the validity of Luttinger's theorem for the superconducting cuprates.^{6,7} While some ARPES studies of Bi-2212 conclude that a large, holelike FS persists even to very low doping levels,⁸ other data imply a change in FS topology⁹ or the presence of hole pockets at underdoping.¹⁰ Recent data from $\text{La}_{2-x}\text{Sr}_x\text{CuO}_4$ (LSCO) have been interpreted in terms of a change of FS topology from hole like for $x < 0.2$ to electron like for higher doping levels.¹¹

The recent improvement in the performance of photoemission instrumentation (in particular in the angular resolution) has led to a renaissance in the direct determination of the basal plane projection of the FS using ARPES. Considering the fundamental importance of the FS topology and shape in deciding the physical properties of a solid, it is natural to want to study its doping dependence in the Bi-based HTSC's directly and with high precision using high-resolution FS mapping.

The ARPES experiments reported here were performed either using monochromated He I radiation and an SES200 electron analyzer or using $h\nu = 25$ eV radiation from the U125/1-PGM beamline at (Ref. 12) and an SES100 electron analyzer. The samples were mounted on a triple-axis goniometer, enabling computer-controlled angular scanning with a precision exceeding 0.1° for all axes, resulting in a dense sampling of a large portion of $\mathbf{k}\omega$ space for each single crystal studied. The overall resolution was set to $0.014 \text{ \AA}^{-1} \times 0.035 \text{ \AA}^{-1} \times 19 \text{ meV}$ which are the full width at half maximum (FWHM) momentum (parallel and perpendicular to the analyzer entrance slit) and energy resolutions, respectively.¹³ The samples were cleaved *in situ* to give mirrorlike surfaces and all data were measured above the

pseudogapped regime at 300 K within 3-4 h of cleavage. The synchrotron based data were collected at 30 K with $0.014 \text{ \AA}^{-1} \times 0.014 \text{ \AA}^{-1} \times 17 \text{ meV}$ resolution. We investigated a set of high-quality single crystals of Pb-doped Bi-2212 (Pb:Bi ratio = 0.4:1.6) which had undergone different oxygen loading procedures. As we have pointed out earlier (see, e.g., Refs. 5, 14 and 15), it is wise to use the Pb-substituted variants for such experiments as these systems do not possess the incommensurate modulation of the BiO layers which in pristine Bi-2212 leads to the appearance of strong diffraction replicas of the main and shadow FS features in the maps, thus disqualifying a detailed discussion of the FS topology, shape, and area as a function of doping. In the following, we label the samples, which span a T_c range of 35 K around optimal doping, according to their T_c : UD 76 K, UD 85 K, UD 89 K, OD 81 K, OD 72 K, and OD 69 K (UD and OD stand for underdoped and overdoped).

Figure 1 shows the Fermi surface maps for all six doping levels. Each data set contains ca. 5000 ARPES spectra. We collect data from a significantly larger region of \mathbf{k} space than the irreducible octant, which brings the advantage of enabling a quantitative correction of angular misalignments of the crystal to a precision of 0.1° .

To minimize the effects of the factors separating the ARPES intensity distribution from the spectral function (see Ref. 13), the data were "self-normalized" by dividing the signal from the Fermi level, $I(\mathbf{k}, \omega = 0)$, by the signal at highest binding energy, $I(\mathbf{k}, \omega_{hbe})$ (here ω_{hbe} is 300 meV). The FS topology and shape derived from these data do not depend sensitively upon the use of any reasonable self-normalization denominators, although we wish to stress here that the self-normalization procedure itself is indispensable for the precise determination of the \mathbf{k}_F vectors (see the Appendix).

Before going on to discuss the data in a more quantitative manner, we first cover what can be learned directly from a simple visual inspection of Fig. 1. (i) There is no topological change of the main FS within the doping range studied—it

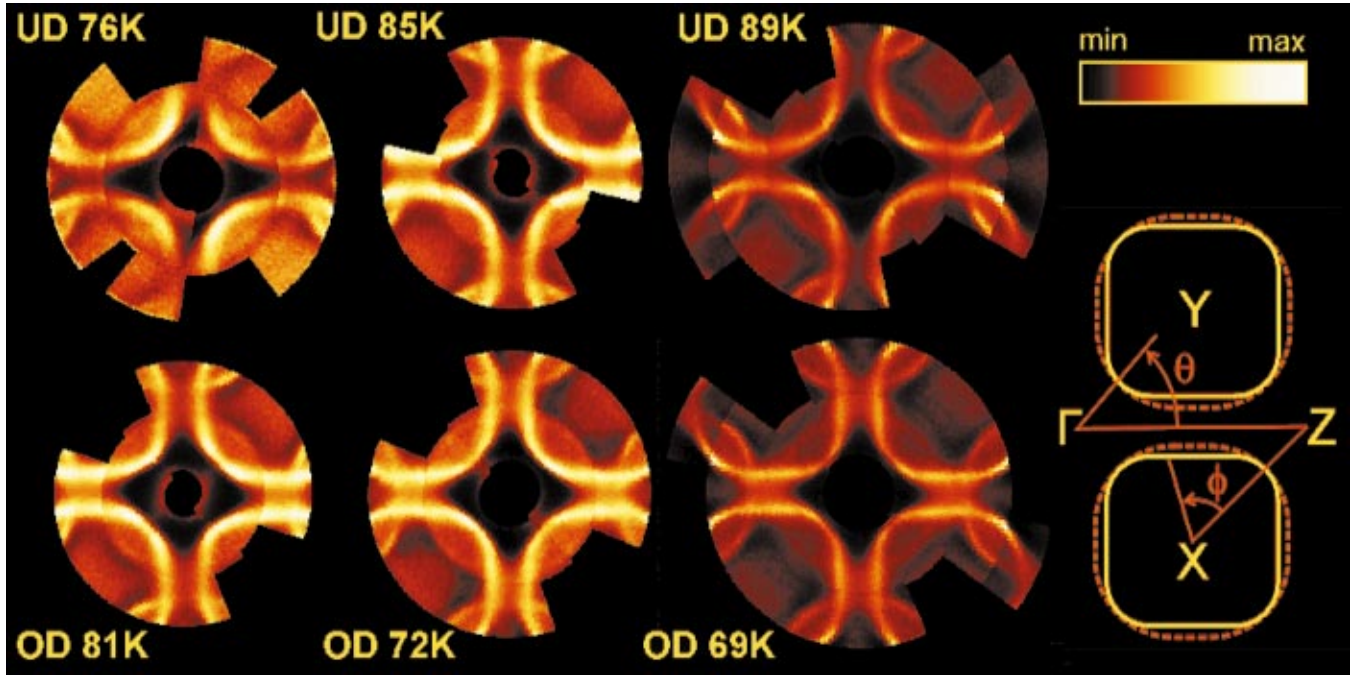


FIG. 1. (Color) Basal plane projection of the normal-state (300 K) Fermi surface of Bi(Pb)-2212 from high-resolution ARPES. The E_F intensity (normalized to the signal at $\omega=0.3$ eV) is shown in color. The T_c of each sample is indicated. The raw data cover half of the colored area of each map and have been rotated by 180° around the Γ point to give a better \mathbf{k} -space overview. The line dividing raw and rotated data runs almost vertically for the UD 76 K map and from top left to bottom right in all other maps. The sketch shows the FS for the OD 69 K data set as yellow barrel-like shapes defined by joining the maxima of fits to the normalized E_F MDC's.

remains hole like [centered at the $X, Y (\pm\pi, \pm\pi)$ points], in contrast to recent data from the LSCO system.¹¹ (ii) As hole doping is increased, the main FS “barrels” increase in size [as can easily be seen in the decrease of the interbarrel separation around the $M (\pi,0)$ point], accompanied by an increase in the size of the lenses formed by main FS and shadow FS (SFS). (iii) The shape of the FS barrels changes from being quite rounded at low doping to taking on the form of a square with well-rounded corners at higher doping. (iv) The SFS exists at all doping levels.

We stress that these statements describe experimental observations and are independent of any particular data analysis or physical interpretation.

One of the fundamental questions in the physics of two-dimensional (2D) strongly correlated electron systems is to what extent the interacting electron system can be described by models derived perturbatively from the noninteracting case. One way to test this is to consider the validity or otherwise of Luttinger's theorem, which can be paraphrased by stating that the volume (area in 2D) of the FS should be conserved upon switching on the interactions. Thus, if we are able to pin down the doping dependence of the exact path in \mathbf{k} space which represents the Fermi surface in, for example, the (Pb,Bi)-2212 HTSC without knowing, *a priori*, its shape, we would be able to evaluate the doping dependence of the FS area and thus test Luttinger's theorem. The best approach here is to locate the maxima in the E_F momentum distribution curves¹⁶ (MDC's) describing tracks crossing the FS (preferably at right angles, see the Appendixes here and in Ref. 13 for details).

Such a fitting procedure was carried out for the OD 69 K

sample. The detailed result is well described by a FS having the form of a square with rounded corners, which confirms the visual impression from the intensity map for this sample. Such a form gives a simple analytical approximation for the FS shape also predicted in tight-binding and local density approximation (LDA) calculations.^{17,18} A sketch of the fit result is shown as the yellow line on the right-hand side of Fig. 1. The FS maps from the other samples were then fitted, whereby the extent of the straight sections and the size of the barrel as a whole were varied to optimize the fit to the data. We can then derive the hole concentration x from the simple relation $x+1=2S_b/S_{BZ}$, where S_b is the area of main FS barrel and S_{BZ} is the area of the Brillouin zone.

The results obtained from the analysis of the FS area are shown in Fig. 2 in the form of a T_c vs x plot. The solid line shows the commonly employed empirical relation between T_c and x .¹⁹ For the six samples spanning a total of 35 K in T_c , the coordinate pairs matching the T_c 's to the doping level taken directly from the experimentally determined Fermi surface area also give a parabolic curve (shown as a dotted line), but this curve is downshifted in doping by ca. 0.05 towards the underdoped side of the phase diagram. This result, being quite surprising not long ago, can be well understood now in terms of the bilayer splitting of the CuO band.^{20,21}

Before going further, we note that such a shift is hard to explain by the assumption that the doping level at the surface is lower than in the bulk. If this were the case (for example, by loss of oxygen at the surface), such a deviation should be strongly dependent on the oxygen loading procedure, affecting the OD samples more strongly than the UD, which is

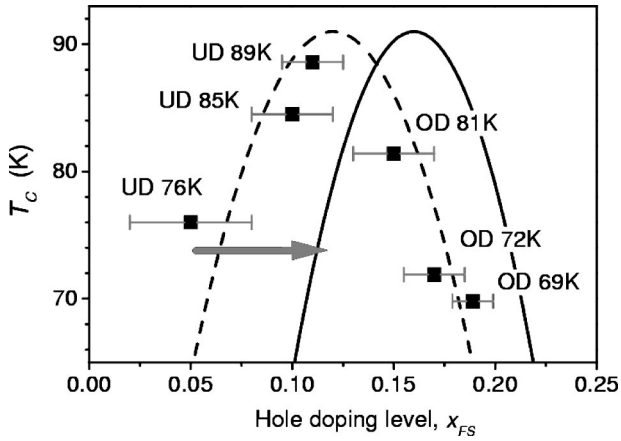


FIG. 2. Symbols: critical temperatures vs the hole concentration, x_{FS} , the latter being calculated directly from the area of the FS's shown in Fig. 1. The solid line shows the commonly used empirical relation for T_c vs x (Ref. 19).

clearly not the case. Furthermore, the fact that the superconducting gap seen in ARPES data from the same samples (not shown) closes unambiguously at the *bulk* T_c in the overdoped systems is incompatible with a lower doping level at the surface.

The acceptance of an existence of the c -axis bilayer splitting in Bi-2212 marks a watershed in the interpretation of ARPES data from the multilayer HTSC. This splitting has been directly resolved recently in highly overdoped Bi-2212 (Refs. 20 and 21) and (Bi,Pb)-2212 (Ref. 22) and shown (but not resolved) to be roughly the same for underdoped Bi-2212.²³ In Fig. 3, we show azimuthal energy distribution maps [EDM's: $I(\theta, \omega)$, where θ is the azimuth angle; see Fig. 1] at $T=30$ K for three different $|\mathbf{k}|=1.084, 1.088,$ and 1.092 \AA^{-1} (from the left to the right correspondingly) which demonstrate a well-resolved bilayer splitting in underdoped (Bi,Pb)-2212 ($T_c=77$ K).

Given the presence of the bilayer splitting (which we include here in the notion "complex structure"), the blurring

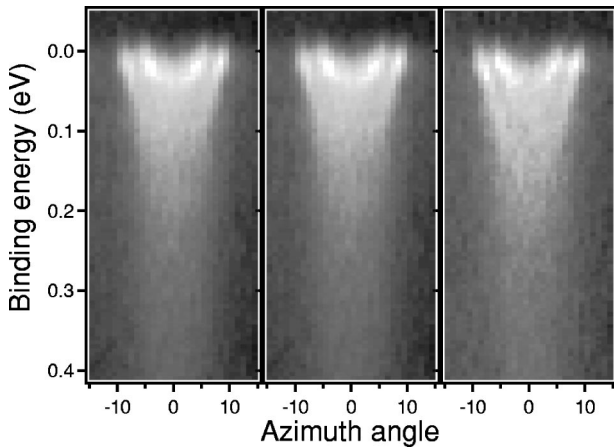


FIG. 3. The azimuthal energy distribution maps (EDM's) at $T=30$ K for three different $|\mathbf{k}|=1.084, 1.088,$ and 1.092 \AA^{-1} (from the left to the right correspondingly) which demonstrate a well-resolved bilayer splitting in underdoped (Bi,Pb)-2212 ($T_c=77$ K).

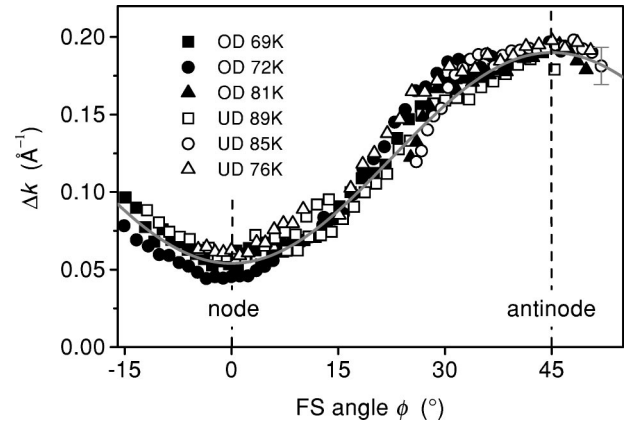


FIG. 4. The width of the room-temperature main FS, Δk vs the FS angle ϕ defined with respect to the nodal line. The T_c 's are indicated and the solid gray line represents relation (1); for details see text.

of the FS (see Fig. 1) on going from the nodal to the antinodal point for all doping levels, which is often attributed to the complex physics of antinodal electrons (e.g., the absence of well-defined quasiparticles), could at least partially be due to such a complex structure of the FS itself. In order to examine this possibility, in the following we analyze the FS width in more detail.

In Fig. 4, we show the width of the FS, Δk vs ϕ , the latter being the angle away from the nodal line, as indicated in Fig. 1. The Δk values were derived from fitting E_F MDC's using a Lorentzian profile with Δk FWHM. For all doping levels investigated the room-temperature FS width is strongly k dependent, being maximal near the antinode and minimal at the node. The dotted line in Fig. 4 shows that the data can be well described by the function

$$\Delta k(\phi) = \Delta k_0 + \Delta k_1 \sin^2(2\phi), \quad (1)$$

where $\Delta k_0 = 0.054 \text{ \AA}^{-1}$ and $\Delta k_1 = 0.136 \text{ \AA}^{-1}$.

Remarkably, the observed k dependence of the FS width is essentially *independent* of the doping level. This is difficult to reconcile with a FS width determined solely by the complex physics of the FS electrons, as within such a picture the difference in the coupling to interactions between the nodal and antinodal regions should decrease continually as the doping increases.^{24,25} Equally, we can rule out effects resulting from differing group velocities around the FS contour, as these have been shown to be essentially constant.²⁶

On the other hand, exploiting the "complex FS structure" scenario, we can associate a splitting in momentum, $\delta k(\phi)$, with the c -axis bilayer splitting. For the case in which the maxima of the MDC's (i.e., the intensity in a self-normalized FS map such as those of Fig. 1) correspond to the inner-bilayer-split FS barrel (namely, the bonding CuO-bilayer band), this would result in a shift of the observed doping level of

$$\delta x \approx \frac{\delta S}{S_{BZ}} \approx \frac{\langle k_b \rangle}{S_{BZ}} \int_0^{2\pi} \delta k(\phi) d\phi, \quad (2)$$

where δS is the difference in area between the split barrels, k_b is the radius of main FS barrel with respect to the X point ($\langle k_b \rangle \approx 0.6 |\Gamma X|$), and $|\Gamma X| = 1.161 \text{ \AA}^{-1}$. This effect is illustrated schematically in the illustration shown in Fig. 1 where the yellow (red) barrels represent the smaller (larger) FS's resulting from the bilayer splitting. Taking a Lorentzian form for the E_F MDC which cuts the FS, we expect a bilayer-splitting-induced FS width given by

$$\Delta k \approx W + \frac{3(\delta k)^2}{2W}, \quad (3)$$

where W is the FWHM of the FS without splitting and $\delta k \ll W/\sqrt{3}$ is assumed to hold. In such a manner we can estimate an upper limit for $\delta x = 0.07$, which is illustrated in Fig. 2 by the broad gray arrow. This demonstrates that the effect of the bilayer splitting is enough to explain the downshift of the T_c vs doping parabola.

The reason why the photocurrent intensity from the antibonding band at E_F is less than from the bonding one and, consequently, why the maxima of the MDC's correspond to the inner-bilayer-split FS barrel is the difference between matrix elements for photoemission from these two bands. In fact, the ratio between the effective matrix elements for emission from the bonding and antibonding Cu-O bands, $M_b/M_a \approx 2$ for $h\nu = 21.2 \text{ eV}$ (see Fig. 3 in Ref. 15). In contrast, for 25 eV excitation energy, $M_b/M_a \approx 1$ and neither the emission from the bonding nor the antibonding band dominates resulting in a clear splitting as can be seen in the EDM's shown in Fig. 3.

Finally, we note in this context that the upper limits of δk (and consequently δx) obtained above correspond to the limit at which two Lorentzian features are resolvable from one another: $\delta k = W/\sqrt{3}$. This same limit also defines the lower bound for the ϕ dependence of the Fermi surface width which arises from sources *other* than the bilayer splitting:

$$\Delta k(\phi) = \Delta k_0 [1 + 1.3 \sin^2(2\phi)]. \quad (4)$$

In other words, this means that the detected anisotropy described by Eq. (1) cannot be explained by the bilayer splitting alone. In considering either the ‘‘complex physics’’ or ‘‘complex FS structure’’ scenarios we discuss two extremes, whereas the real situation may well include contributions from both. For example, at high hole doping, the ϕ dependence of Δk from ‘‘complex physics’’ should flatten out, which would be counteracted by the increasing bilayer splitting for this doping regime (in which the flat bands approach closer to E_F). Conversely, at low hole doping, the ϕ dependence of the coupling to interactions is strong, whereas the bilayer splitting would be expected to be weaker.²⁷ In this way we end up with the observed overall doping independence of $\Delta k(\phi)$.

As mentioned above, it is possible to compensate for the downshift of the T_c vs x parabola in Fig. 2 by taking the bilayer splitting into account. It would then follow that the area of the main ARPES FS scales with $(1+x)$ in holes across the complete doping range studied. This behavior is in contrast to what is seen in transport measurements. Resistiv-

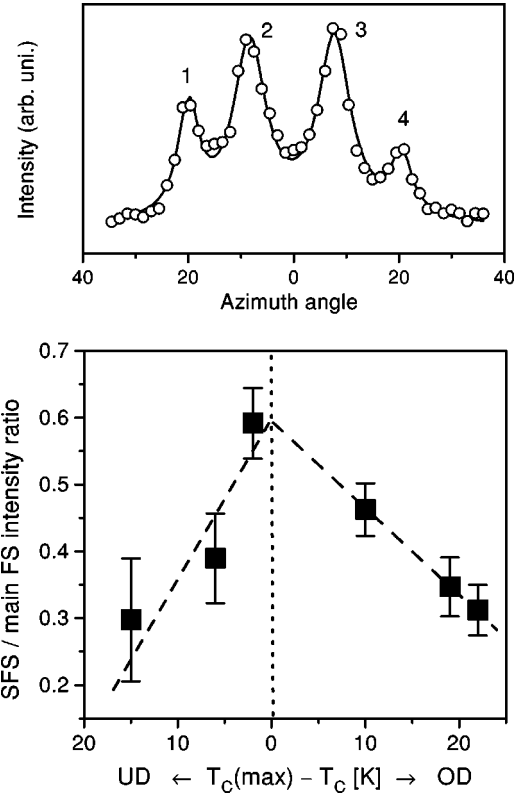


FIG. 5. SFS to main FS intensity ratios vs $T_c^{max} - T_c$ (lower panel)—the dashed straight lines are guides to the eye—and an example of an azimuth MDC from which these intensity ratios have been determined (upper panel): peaks 1 and 4 correspond to the SFS, peaks 2 and 3 correspond to the main FS, and then the intensity ratio $SFS/FS = (I_1/I_2 + I_4/I_3)/2$.

ity and Hall effect data indicate that the transport characteristics scale with x ,^{28,29} even into the overdoped regime.³⁰ Although it is conceivable that only those mobile electrons which have relatively low coupling to other degrees of freedom contribute to the transport, it is surely more than coincidental that this proportion should be exactly $x/(1+x)$. This fundamental difference between the transport data and the ARPES FS is a key question which deserves detailed theoretical attention.

A final surprise that the FS has in store for us is shown in Fig. 5 (lower panel), in which the doping dependence of the intensity ratio of the SFS to that of the main FS is plotted. The intensities I_m were taken in each case from the same azimuthal MDC scan: i.e., with the same $|\mathbf{k}|$ value, some 0.13 \AA^{-1} from the point at which the SFS and main FS ‘‘cross.’’ For this scan the given intensity ratio reaches a local maximum as a function of $|\mathbf{k}|$ which is a consequence of different dependences of the photocurrent from the main and shadow FS's (at the same $|\mathbf{k}|$) on matrix elements. The upper panel of Fig. 5 shows an example (for the OD 69 K) of such azimuth MDC's from which these intensity ratios have been determined: peaks 1 and 4 correspond to the SFS, peaks 2 and 3 correspond to the main FS, and then the intensity ratio $SFS/FS = (I_1/I_2 + I_4/I_3)/2$, where I_1 , I_2 , I_3 , and I_4 are the spectral weights of the corresponding peaks. As Fig. 5 shows, this ratio decreases not only on going from optimal

to overdoping, but also on going towards the underdoped side of the phase diagram (the rate of change is, in fact, even faster on the UD side). This is in contrast to predictions based on an antiferromagnetic origin of the SFS.³¹ The fact that the relative strength of the SFS tracks the doping dependence of T_c means that, regardless of whether the SFS has structural or other origins, this phenomenon is important and could be related to high- T_c superconductivity itself. The behavior seen here, taken together with the very strong similarities with SFS data from pristine Bi2212 (which has important *structural* differences to Pb-doped Bi2212) means that further work is needed, both on the experimental but also on the theoretical side, before the question of the origin and consequences of the shadow Fermi surface can be considered as being solved.

In conclusion, we have presented a detailed and systematic ARPES investigation of the doping dependence of the normal-state (room-temperature) FS of the Bi-2212 family of HTSC materials. The data clearly show no change in the FS topology away from hole like at any stage (from UD 76 K to OD 69 K). An analysis of the main FS area gives a parabolic T_c vs x_{FS} relation, shifted to lower x by some 0.05 compared to the “universal” relation,¹⁹ which can be accounted for by the presence of two (unresolved) FS’s near $(\pi,0)$ due to a bilayer splitting with a maximum value ca. 0.05 \AA^{-1} , which stays roughly constant across the whole doping range. Furthermore, the FS width is shown to be strongly dependent on k , but for each particular k_F point it is essentially independent of the doping level. This can be understood as a combination of the effects of the bilayer splitting (dominating at higher doping) and the complex physics of the FS electrons (dominating at lower doping). Finally, the shadow FS is clearly visible for all doping levels and has maximal intensity at optimal doping, raising the question of a possible link between the origins of the shadow FS and superconductivity.

We are grateful to the BMBF (05 SB8BDA 6) and to the Fonds National Suisse de la Recherche Scientifique for support and to S.-L. Drechsler, A. N. Yaresko, A. Ya. Perlov, R. Hayn, N. M. Plakida, M. Eschrig, and O. K. Andersen for stimulating discussions.

APPENDIX

A meaningful estimation of the doping level from a FS map as described above requires the very precise determination of the FS vectors. Here we explain why the self-normalization procedure has been chosen for this purpose.

In Ref. 13 we already discussed the applicability of different methods of k_F determination to ARPES data from Bi cuprates and demonstrated that the most accurate is the “maximum MDC” method.¹⁶ In Ref. 13 this was illustrated for the case of the nodal direction. At lower energy resolution (or for the case in which the MDC peaks are broader), however, the deviation of the experimentally determined k_F from the true value, Δk_F , could be considerable and even comparable with the Δk_F ’s from other methods such as “gradient $n(k)$ ” (see Ref. 13). It turns out that the above-mentioned shift (Δk_F) is nearly completely compensated for

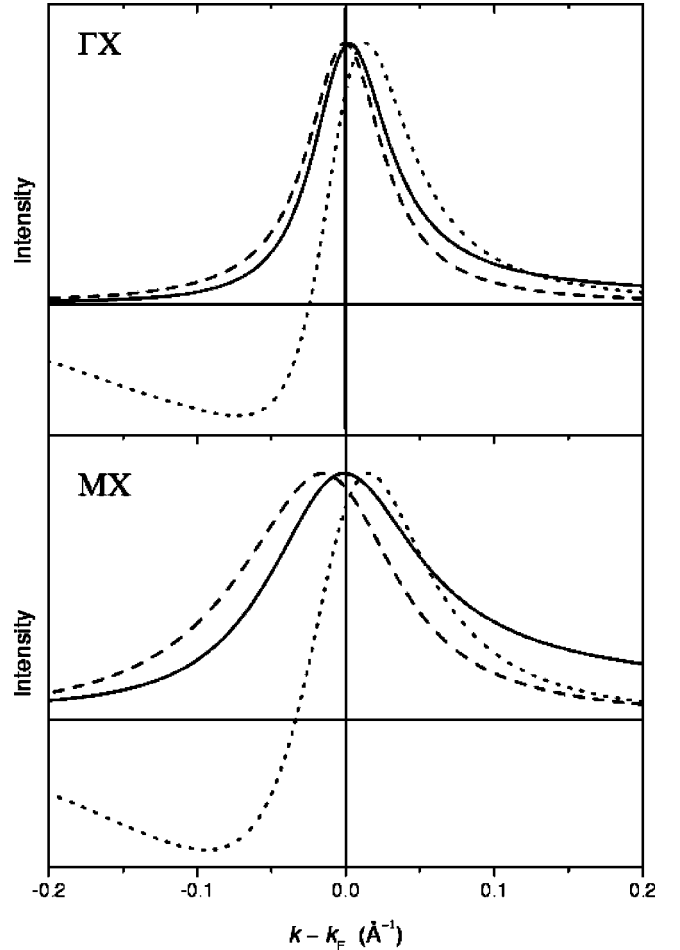


FIG. 6. Results of E_F -MDC simulations for nodal [Γ - (π, π) crossing, upper panel] and antinodal [$(\pi, 0)$ - (π, π) crossing, lower panel] ARPES data for a typical low-energy dispersion (for details see text). The dashed curves are the raw (non-normalized) MDC’s, the solid curves are the MDC’s after self-normalization to the highest binding energy, and the dotted curves represent the results of the $dn(k)/dk$ method.

by the self-normalization procedure and therefore the deviation of the visible FS traces on the self-normalized intensity maps (like those shown in Fig. 1) from the real FS is negligible. This is demonstrated below.

Figure 6 represents the results of E_F -MDC simulations in the nodal [Γ - (π, π) crossing, upper panel] and antinodal [$(\pi, 0)$ - (π, π) crossing, lower panel] points for typical low-energy dispersion relations $\varepsilon_k = v_F(k_F - k)$ with $v_F = 2 \text{ eV \AA}$. For this simulation we use a simple form for the spectral function (with the momentum resolution included)

$$A(k, \omega, R_k) \propto \frac{\sqrt{\Sigma''(\omega, T)^2 + R_k^2}}{(\omega - \varepsilon_k)^2 + \Sigma''(\omega, T)^2 + R_k^2}, \quad (\text{A1})$$

where the imaginary part of the self-energy

$$\Sigma''(\omega, T) = \sqrt{(\alpha\omega)^2 + (\beta T)^2} \quad (\text{A2})$$

has been taken with $\alpha = 1$ and $\beta = 2$ (binding energy ω and temperature $T = 300 \text{ K}$ are in energy units), giving a reson-

able fit to the experiment.^{13,15} The real part of the self-energy is included in ε_k . The photocurrent is calculated as

$$I(k, \omega) \propto [A(k, \omega, R_\omega) f(\omega)] \otimes R_\omega, \quad (\text{A3})$$

where $f(\omega)$ is the Fermi function. The momentum resolutions are taken to be 0.014 \AA^{-1} and 0.035 \AA^{-1} for the ΓX and MX crossings, respectively, and energy resolution of 19 meV for both. For the MX crossing, to check an extreme, the ‘‘splitting value’’ $\Delta\varepsilon = 80 \text{ meV}$ is added to the R_ω function as a FWHM. The dashed curves represent the raw (non-normalized) MDC’s: $I(k, 0)$. The solid curves represent MDC’s obtained by self-normalizing every EDC to the highest binding energy (ω_{hbe} in this case is 0.3 eV): $I(k, 0)/I(k, \omega_{hbe})$. For comparison, the $dn(k)/dk$ dependences are shown as dotted lines where

$$n(k) = \int_{-\omega_{hbe}}^{\omega_{hbe}} I(k, \omega) d\omega. \quad (\text{A4})$$

Figure 6 illustrates that whereas in the case of the nodal region both raw and self-normalized MDCs are only slightly shifted from the real k_F ($\Delta k_F = -0.001$ and 0.003 \AA^{-1} , respectively), in the antinodal region the shift of the raw MDC is rather large (-0.015 \AA^{-1}) whereas the peak of the self-normalized curve practically coincides with the true k_F (i.e., $\Delta k_F = -0.001 \text{ \AA}^{-1}$). This demonstrates the power of the self-normalization procedure: its application to the intensity maps not only reduces the influence of the matrix element effects¹³ but also restores the true location of the FS vectors, thus making it the correct choice in the study of the FS topology, shape, and area.

*Present address: Van der Waals-Zeeman Institute, University of Amsterdam, Valckenierstraat 65, NL 1018 XE Amsterdam, The Netherlands.

- ¹D. S. Dessau, Z.-X. Shen, D. M. King, D. S. Marshall, L. W. Lombardo, P. H. Dickinson, A. G. Loeser, J. DiCarlo, C.-H. Park, A. Kapitulnik, and W. E. Spicer, *Phys. Rev. Lett.* **71**, 2781 (1993).
- ²Jian Ma, C. Quitmann, R. J. Kelley, P. Alméras, H. Berger, G. Margaritondo, and M. Onellion, *Phys. Rev. B* **51**, 3832 (1995).
- ³Y.-D. Chuang, A. D. Gromko, D. S. Dessau, Y. Aiura, Y. Yamaguchi, K. Oka, A. J. Arko, J. Joyce, H. Eisaki, S. I. Uchida, K. Nakamura, and Yoichi Ando, *Phys. Rev. Lett.* **83**, 3717 (1999).
- ⁴H. M. Fretwell, A. Kaminski, J. Mesot, J. C. Campuzano, M. R. Norman, M. Randeria, T. Sato, R. Gatt, T. Takahashi, and K. Kadowaki, *Phys. Rev. Lett.* **84**, 4449 (2000).
- ⁵S. V. Borisenko, M. S. Golden, S. Legner, T. Pichler, C. Dürr, M. Knupfer, J. Fink, G. Yang, S. Abell, and H. Berger, *Phys. Rev. Lett.* **84**, 4453 (2000).
- ⁶C. G. Olson, R. Liu, D. W. Lynch, R. S. List, A. J. Arko, B. W. Veal, Y. C. Chang, P. Z. Jiang, and A. P. Paulikas, *Phys. Rev. B* **42**, 381 (1990).
- ⁷J. C. Campuzano, G. Jennings, M. Faiz, L. Beaulaigue, B. W. Veal, J. Z. Liu, A. P. Paulikas, K. Vandervoort, H. Claus, R. S. List, A. J. Arko, and R. J. Bartlett, *Phys. Rev. Lett.* **64**, 2308 (1990).
- ⁸H. Ding, M. R. Norman, T. Yokoya, T. Takeuchi, M. Randeria, J. C. Campuzano, T. Takahashi, T. Mochiku, and K. Kadowaki, *Phys. Rev. Lett.* **78**, 2628 (1997).
- ⁹P. Schwaller, T. Greber, P. Aebi, J.M. Singer, H. Berger, L. Fórró, and J. Osterwalder, *Eur. Phys. J. B* **18**, 215 (2000).
- ¹⁰D. S. Marshall, D. S. Dessau, A. G. Loeser, C.-H. Park, A. Y. Matsuura, J. N. Eckstein, I. Bozovic, P. Fournier, A. Kapitulnik, W. E. Spicer, and Z.-X. Shen, *Phys. Rev. Lett.* **76**, 4841 (1996).
- ¹¹A. Ino, C. Kim, M. Nakamura, T. Yoshida, T. Mizokawa, Z.-X. Shen, A. Fujimori, T. Kakeshita, H. Eisaki, and S. Uchida, *Phys. Rev. B* **65**, 094504 (2002).
- ¹²R. Follath, *Nucl. Instrum. Methods Phys. Res. A* **467-468**, 418 (2001).
- ¹³S. V. Borisenko, A. A. Kordyuk, S. Legner, C. Dürr, M. Knupfer, M. S. Golden, J. Fink, K. Nenkov, D. Eckert, G. Yang, S. Abell, H. Berger, L. Fórró, B. Liang, A. Maljuk, C. T. Lin, and B. Keimer, *Phys. Rev. B* **64**, 094513 (2001).
- ¹⁴S. Legner, S. V. Borisenko, C. Dürr, T. Pichler, M. Knupfer, M. S. Golden, J. Fink, G. Yang, S. Abell, H. Berger, R. Müller, C. Janowitz, and G. Reichardt, *Phys. Rev. B* **62**, 154 (2000).
- ¹⁵A. A. Kordyuk, S. V. Borisenko, T. K. Kim, K. Nenkov, M. Knupfer, M. S. Golden, J. Fink, H. Berger, and R. Follath, *cond-mat/0110379*, *Phys. Rev. Lett.* (to be published).
- ¹⁶P. Aebi, J. Osterwalder, P. Schwaller, L. Schlapbach, M. Shimoda, T. Mochiku, and K. Kadowaki, *Phys. Rev. Lett.* **72**, 2757 (1994).
- ¹⁷A. I. Liechtenstein, O. Gunnarsson, O. K. Andersen, and R. M. Martin, *Phys. Rev. B* **54**, 12 505 (1996).
- ¹⁸O. K. Andersen, A. I. Liechtenstein, O. Jepsen, and F. Paulsen, *J. Phys. Chem. Solids* **56**, 1573 (1995).
- ¹⁹J. L. Tallon, C. Bernhard, H. Shaked, R. L. Hitterman, and J. D. Jorgensen, *Phys. Rev. B* **51**, 12 911 (1995).
- ²⁰D. L. Feng, N. P. Armitage, D. H. Lu, A. Damascelli, J. P. Hu, P. Bogdanov, A. Lanzara, F. Ronning, K. M. Shen, H. Eisaki, C. Kim, Z.-X. Shen, J.-i. Shimoyama, and K. Kishio, *Phys. Rev. Lett.* **86**, 5550 (2001).
- ²¹Y.-D. Chuang, A. D. Gromko, A. Fedorov, Y. Aiura, K. Oka, Yoichi Ando, H. Eisaki, S. I. Uchida, and D. S. Dessau, *Phys. Rev. Lett.* **87**, 117002 (2001).
- ²²P. V. Bogdanov, A. Lanzara, X. J. Zhou, S. A. Kellar, D. L. Feng, E. D. Lu, H. Eisaki, J.-I. Shimoyama, K. Kishio, Z. Hussain, and Z.-X. Shen, *Phys. Rev. B* **64**, 180505(R) (2001).
- ²³Y.-D. Chuang, A. D. Gromko, A. V. Fedorov, Y. Aiura, K. Oka, Yoichi Ando, and D. S. Dessau, *cond-mat/0107002* (unpublished).
- ²⁴H. Krakauer and W. E. Pickett, *Phys. Rev. Lett.* **60**, 1665 (1988).
- ²⁵S. Massida, J. Yu, and A. J. Freeman, *Physica C* **152**, 251 (1988).
- ²⁶T. Valla, A. V. Fedorov, P. D. Johnson, Q. Li, G. D. Gu, and N. Koshizuka, *Phys. Rev. Lett.* **85**, 828 (2000).
- ²⁷M. Lindroos, S. Sahrakorpi, and A. Bansil, *Phys. Rev. B* **65**, 054514 (2002).
- ²⁸H. Takagi, B. Batlogg, H. L. Kao, J. Kwo, R. J. Cava, J. J. Krajewski, and W. F. Peck, *Phys. Rev. Lett.* **69**, 2975 (1992).
- ²⁹N. P. Ong in *Physical Properties of High-Temperature Superconductors*, edited by D. M. Ginzberg (World Scientific Singapore, 1990), Vol. 2, p. 459.
- ³⁰F. Rullier-Albenque, P. A. Vieillefond, H. Alloul, A. W. Tyler, P. Lejay, and J. F. Marucco, *Europhys. Lett.* **50**, 81 (2000).
- ³¹S. Haas, A. Moreo, and E. Dagotto, *Phys. Rev. Lett.* **74**, 4281 (1995).