

Nature of the spin-glass state in the three-dimensional gauge glass

Helmut G. Katzgraber and A. P. Young

Department of Physics, University of California, Santa Cruz, California 95064

(Received 3 May 2001; published 23 August 2001)

We present results from simulations of the gauge-glass model in three dimensions using the parallel tempering Monte Carlo technique. Critical fluctuations should not affect the data since we equilibrate down to low temperatures, for moderate sizes. Our results are qualitatively consistent with earlier work on the three- and four-dimensional Edwards-Anderson Ising spin glass. We find that large-scale excitations cost only a finite amount of energy in the thermodynamic limit and that those excitations have a surface whose fractal dimension is less than the space dimension, consistent with a scenario proposed by Krzakala and Martin, and Palassini and Young.

DOI: 10.1103/PhysRevB.64.104426

PACS number(s): 75.50.Lk, 75.40.Mg, 05.50.+q

I. INTRODUCTION

The ground-state structure of spin glasses is poorly understood. While there has been considerable work on Ising-type spin-glass systems,¹⁻⁴ models with a vector order parameter symmetry have not yet been analyzed in much detail. Here we study the three-dimensional gauge glass since it is a simple model with a vector order parameter in which a finite-temperature spin-glass transition⁵ has been well established.

There are two theories describing the spin-glass phase: the “droplet picture” (DP) by Fisher and Huse⁶ and the replica symmetry breaking (RSB) picture by Parisi.^{7,8} According to the droplet picture, a cluster of spins of size L costs an energy proportional to L^θ where θ is positive. This implies that, in the thermodynamic limit, excitations which flip a finite cluster of spins cost an infinite energy. In addition, these excitations have a fractal surface with a fractal dimension d_s that is smaller than the space dimension d . By contrast, RSB follows the exact solution of the Sherrington-Kirkpatrick model in predicting that there are excitations which turn over a finite fraction of the spins and which cost a finite amount of energy in the thermodynamic limit. The surface of these excitations is space filling,³ i.e. $d_s = d$. Another difference between these models can be quantified by looking at the distribution of the order parameter^{3,9-11} $P(q)$. In the droplet picture, according to the standard interpretation,^{12,13} $P(q)$ is trivial; i.e., there are only two peaks at $\pm q_{\text{EA}}$ in the thermodynamic limit (q_{EA} is the Edwards-Anderson order parameter). For finite systems of linear size L , there is a tail with weight $\sim L^{-\theta}$ down to $q=0$. On the contrary, RSB predicts also a tail with a finite weight down to $q=0$ independent of system size.

Recently, there have been results by Krzakala and Martin,¹ as well as Palassini and Young² (referred to as KMPY), for Ising-type systems that find an intermediate picture: while large-scale excitations cost only a finite amount of energy in the thermodynamic limit, their surface is fractal with $d_s < d$. In this scenario, it is necessary to introduce two exponents θ and θ' to describe the system size dependence of the excitation energy, where L^θ is the typical energy of an excitation of size L induced by a change in boundary conditions, and θ' describes the size dependence of the energy of

clusters thermally excited at fixed boundary conditions.

In this paper we test which of the above predictions apply to the gauge glass by performing Monte Carlo simulations down to low temperatures for a modest range of sizes using the parallel tempering Monte Carlo method,^{14,15} as previously done in Ref. 4 for the three- and four-dimensional Edwards-Anderson Ising spin glass. We find that $P(0)$ does not decrease with increasing system size and, from data for q_l , we deduce that $d_s < d$, consistent with the existence of KMPY excitations.

The layout of the paper is as follows: In Sec. II we describe the model as well as the observables measured while in Sec. III we discuss our equilibration tests for the parallel tempering Monte Carlo method. Our results are discussed in Sec. IV. In Sec. V we summarize our conclusions and present some ideas for future work.

II. MODEL AND OBSERVABLES

The Hamiltonian of the gauge glass is given by

$$\mathcal{H} = -J \sum_{\langle i,j \rangle} \cos(\phi_i - \phi_j - A_{ij}), \quad (1)$$

where the sum ranges over nearest neighbors on a square lattice in three dimensions of size $N = L \times L \times L$ and ϕ_i represent the angles of the XY spins. Periodic boundary conditions are applied. J is a positive ferromagnetic coupling between nearest-neighbor spins and A_{ij} represents the line integral of the vector potential directed from site i to site j ,

$$A_{ij} = \frac{2\pi}{\Phi_0} \int_{\mathbf{r}_i}^{\mathbf{r}_j} \mathbf{A} \cdot d\mathbf{l}, \quad (2)$$

and $\Phi_0 = hc/(2e)$ is the flux quantum. The A_{ij} are quenched random variables uniformly distributed between $[0, 2\pi]$. In this work we set $J=1$. Note that on average the gauge glass is isotropic even though there are local quenched fluxes.

This model is often used to describe disordered high- T_c superconductors¹⁶ in a magnetic field since, even though it lacks screening, it has the right order parameter symmetry.

The order parameter of the gauge glass is traditionally defined as

$$Q = \frac{1}{N} \sum_{i=1}^N [\langle e^{i\phi_i} \rangle' \langle e^{-i\phi_i} \rangle']_{\text{av}}, \quad (3)$$

where we indicate thermal averages by angular brackets $\langle \dots \rangle$ and averages over the disorder by rectangular brackets $[\dots]_{\text{av}}$. If we average over all possible global rotations of the spins, then the thermal averages in Eq. (3) vanish, so we need to work in an ensemble where global rotations are not permitted (e.g., by applying a small symmetry breaking field along the $\phi=0$ direction) for Eq. (3) to be sensible. This is indicated by the prime on the thermal average. In the simulation we evaluate the product of the two thermal averages by simulating two copies (replicas) of the system with the same quenched disorder, and so Eq. (3) becomes

$$Q = [\langle q \rangle']_{\text{av}} \quad (4)$$

where the microscopic spin overlap q is defined by

$$q = \frac{1}{N} \sum_{j=1}^N \exp[i(\phi_i^\alpha - \phi_i^\beta)]_{\text{av}}, \quad (5)$$

where α and β refer to the two replicas. In the constrained ensemble, if we write $q(\equiv q_x + iq_y)$ in terms of its real and imaginary parts, then $\langle q_y \rangle' = 0$ and $\langle q \rangle' = \langle q_x \rangle'$.

In practice it is inconvenient to constrain the ensemble by applying a symmetry breaking field, so instead we perform a rotation of one replica relative to the other in order to maximize q_x (and simultaneously set q_y to zero). It is easy to see that q_x in the rotated frame is just $|q|$ (which is invariant under rotations). We therefore take the spin order parameter to be $|q|$ and its expectation value to be

$$Q = [\langle |q| \rangle]_{\text{av}} \quad (6)$$

(no prime now indicating an unconstrained thermal average), which is to be compared with Eq. (4). In the unconstrained ensemble, the probability to get particular values for q_x, q_y only depends on $|q|$.

In addition, we will also study the link overlap q_l , defined by

$$q_l = \frac{1}{N_b} \sum_{\langle i,j \rangle} \cos[(\phi_i^\alpha - \phi_i^\beta) - (\phi_j^\alpha - \phi_j^\beta)], \quad (7)$$

where $N_b = Nd$ is the number of bonds ($d=3$ is the space dimension). The sum ranges over all nearest-neighbor pairs of spins. Note that while a change in q induced by flipping a cluster of spins is proportional to the *volume* of the cluster, q_l changes by an amount proportional to the *surface* of the cluster.

The weight in $P(|q|)$ for small $|q|$ varies as $L^{-\theta'}$, where θ' was introduced in Sec. I. In addition we expect the variance of the link overlap to fit to a form $\text{Var}(q_l) \sim L^{-\mu_l}$ where, as shown in Ref. 4, $\mu_l = \theta' + 2(d-d_s)$.

III. EQUILIBRATION

For the simulations we use the parallel tempering Monte Carlo method^{14,15} as it allows us to study larger systems at

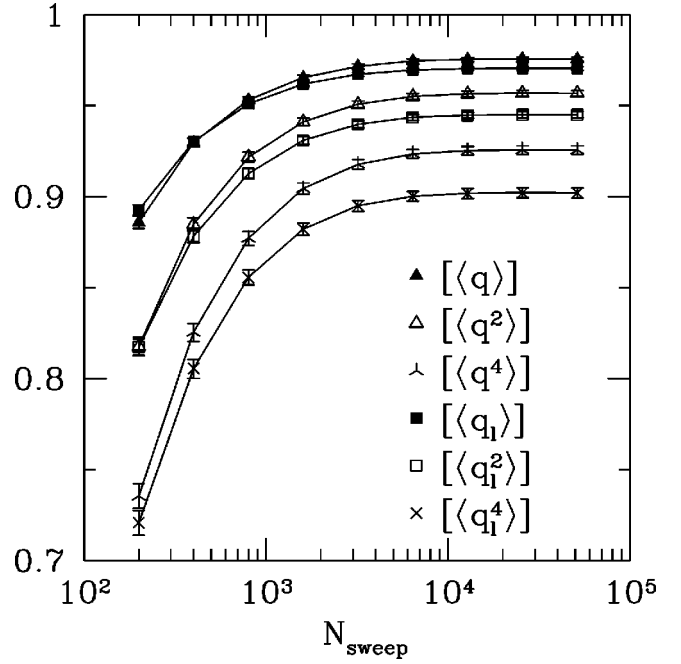


FIG. 1. Moments of the overlap and link overlap, defined by Eqs. (5) and (7), respectively, as a function of Monte Carlo sweeps, N_{sweep} , that each of the replicas perform, averaged over the last half of the sweeps. Note that the moments seem to equilibrate roughly at the same time and appear to be independent of the number of sweeps. The data shown are for $L=4$ and $T=0.050$, the lowest temperature studied.

lower temperatures. In this technique, one simulates several identical replicas of the system at different temperatures, and in addition to the usual local moves, one performs global moves in which the temperatures of two replicas (with adja-

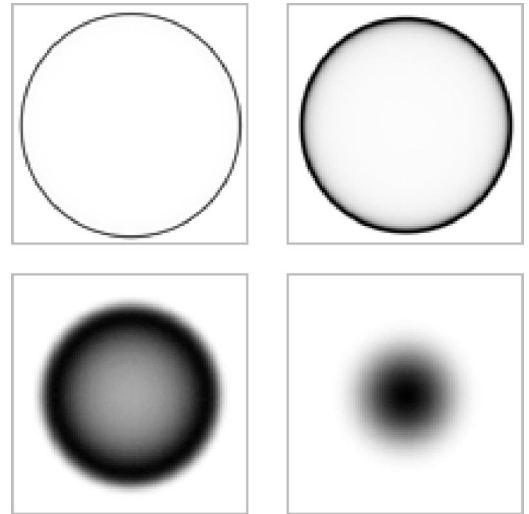


FIG. 2. Two-dimensional density plots of $P_{xy}(q_x, q_y)$ vs q_x, q_y for $L=4$. The horizontal (vertical) axis represents q_x (q_y). Dark regions correspond to a region of high probability. Note that for different temperatures ranging from below to above T_c the distributions are symmetric around $q=0$ (clockwise from top left: $T = 0.050, 0.166, 0.520$, and 0.947).

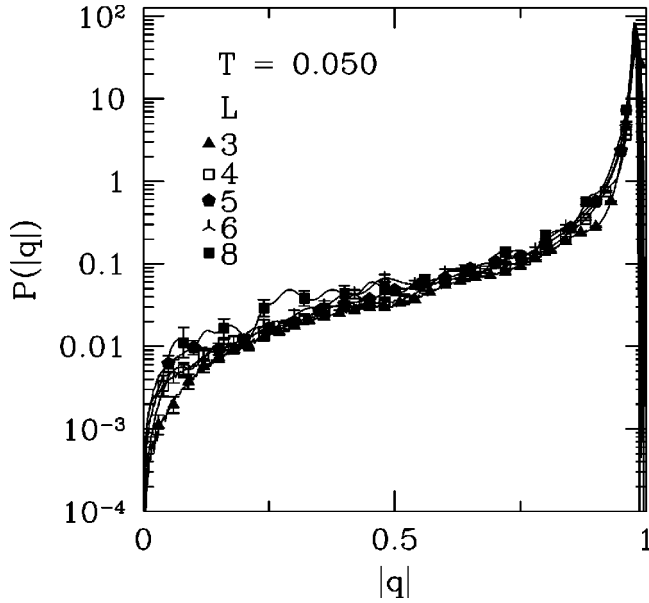


FIG. 3. Data for the overlap distribution $P(|q|)$ at temperature $T=0.050$ for different system sizes. Note the logarithmic vertical scale. In this and other similar figures in the paper, we only display a subset of all the data points while the lines connect all the data points in the set. Thus, the wiggles in the lines between neighboring symbols are meaningful.

cent temperatures) are exchanged. This method does not allow us to use the equilibration test first introduced by Bhatt and Young¹⁷ because the system temperature does not stay constant throughout the simulation. The equilibration test for short-range spin glasses simulated with parallel tempering Monte Carlo introduced in Ref. 4 by Katzgraber *et al.* does not work here either because the disorder is not Gaussian. To ensure that the system is equilibrated, we therefore require that different moments of q and q_l be independent of the number of Monte Carlo steps, N_{sweep} . Figure 1 shows data for several moments of q and q_l as a function of Monte Carlo steps. One can clearly see that the different moments saturate at the *same* equilibration time. Here we show data for an intermediate size ($L=4$) since we can better illustrate the procedure by calculating longer equilibration times. We also require the acceptance ratios of the moves which interchange temperatures to be at least 0.3 or higher and roughly constant as a function of temperature.

TABLE I. Parameters of the simulations. N_{samp} is the number of samples, i.e., sets of gauge fields, N_{sweep} is the total number of sweeps simulated for each of the $2N_T$ replicas for a single sample, and N_T is the number of temperatures used in the parallel tempering method.

L	N_{samp}	N_{sweep}	N_T
3	1.0×10^4	6.0×10^3	53
4	1.0×10^4	2.0×10^4	53
5	1.0×10^4	6.0×10^4	53
6	5.0×10^3	2.0×10^5	53
8	2.0×10^3	1.2×10^6	53

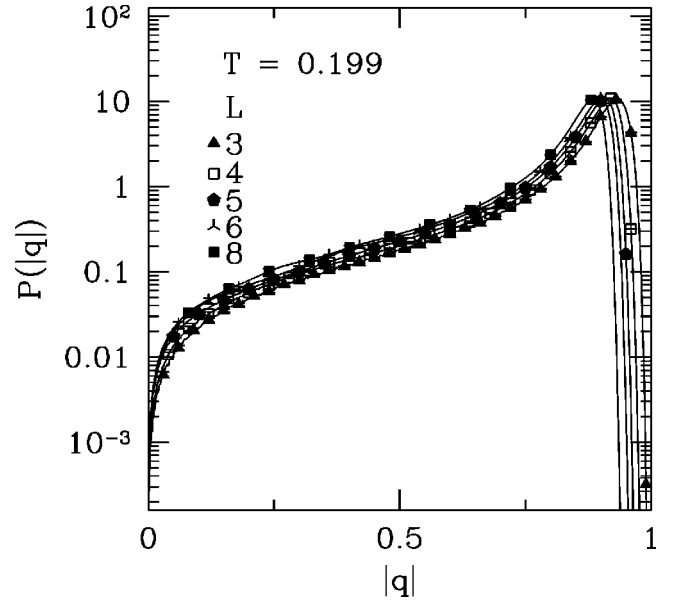


FIG. 4. Same as Fig. 3 but at temperature $T=0.199$.

As another test for equilibration, we require the distribution of q_x, q_y , which we call $P_{xy}(q_x, q_y)$, to be symmetric about the origin. Figure 2 shows a density plot of $P_{xy}(q_x, q_y)$ for $L=4$ at different temperatures. We see clearly that the distributions do not depend on the angle from the origin, as required.

In Table I, we show N_{samp} (number of samples), N_{sweep} (total number of sweeps performed by each set of spins), and N_T (number of temperature values), used in the simulations. For each size, the largest temperature is 0.947 and the lowest temperature is 0.050. This is to be compared with^{5,18} $T_c \approx 0.45$. The set of temperatures is determined by requiring that the acceptance ratios for moves which exchange temperatures be satisfactory for the largest size, $L=8$, and for

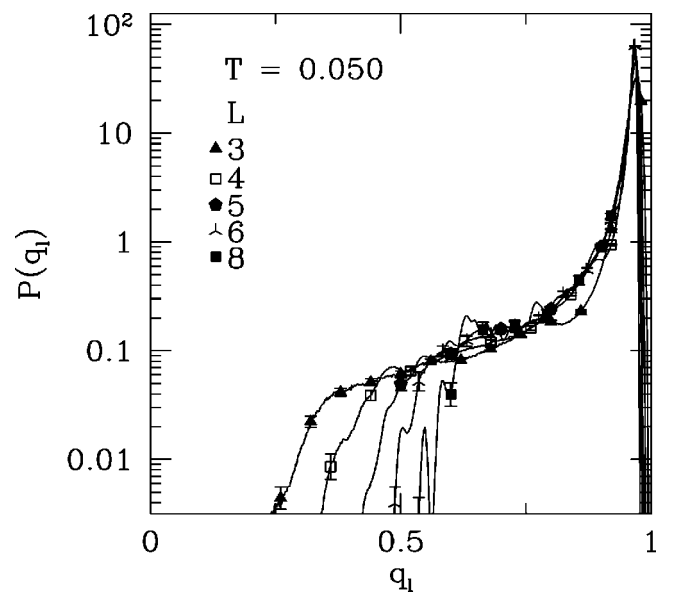
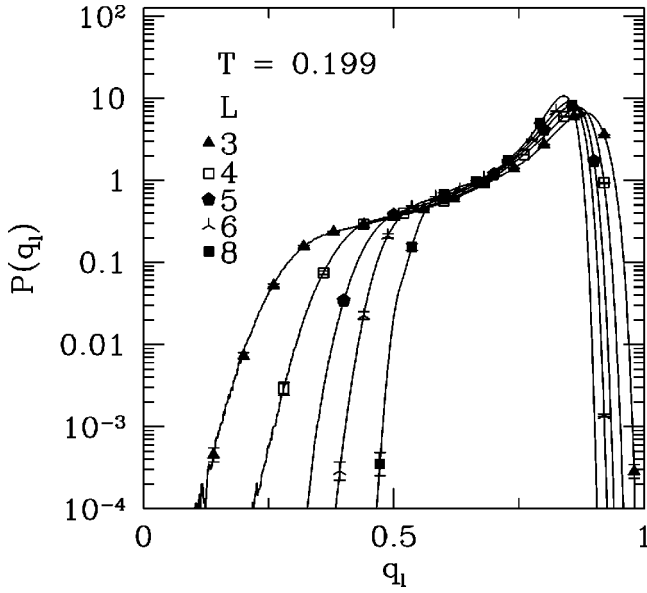


FIG. 5. The distribution of the link overlap at $T=0.050$ for different sizes. Note the logarithmic vertical scale.

FIG. 6. Same as Fig. 5 but at temperature $T=0.199$.

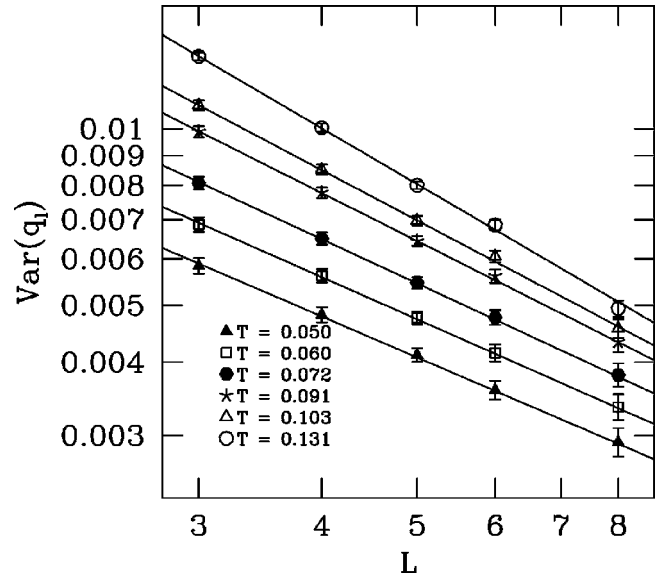
simplicity the same temperatures also are used for the smaller sizes. We also want the distribution of q at the highest temperature to show a Gaussian shape centered at $q=0$ to ensure that all free-energy barriers have vanished so the system will randomize quickly. The lower-right image for $T=0.947 \gg T_c$ in Fig. 2 shows this is the case. For all system sizes, the acceptance ratios for global moves are always greater than 0.3 for each pair of temperatures.

Since the gauge glass has a vector order parameter symmetry, to speed up the simulation we discretize the angles of the spins to $N_\phi = 512$. This number is large enough to avoid any crossover effects to other models as discussed by Cieplak *et al.*¹⁹ To ensure a reasonable acceptance ratio for single-spin Monte Carlo moves, we pick the proposed new angle for a spin within an acceptance window about the current angle, where the size of the window is proportional to the temperature T . By tuning a numerical prefactor we ensure that the acceptance ratios for these local moves are not smaller than 0.2 for each system size at the lowest temperature simulated.

IV. RESULTS

Figures 3 and 4 show data for $P(|q|)$ at $T=0.050$ and 0.199 , well below⁵ $T_c \approx 0.45$. There is a clear peak for large $|q|$ as well as a tail at small $|q|$. The weight in the tail does not decrease with increasing L , as would be expected in the standard interpretations of the droplet theory. If anything, the weight actually increases somewhat for larger sizes.

Note that $P(|q|)$ decreases to zero, linearly, at very small $|q|$. This is clearly a phase space factor, since the two-dimensional probability distribution $P_{xy}(q_x, q_y)$, plotted in Fig. 2, will not diverge for a finite system, and $P(|q|) = 2\pi|q|P_{xy}(q_x, q_y)$. In order to have $P(|q|)$ tend to a constant for $|q| \rightarrow 0$, a prediction of RSB, the region of $|q|$ over which $P(|q|)$ drops linearly must tend to zero for $L \rightarrow \infty$, and also $P_{xy}(q_x, q_y)$ must diverge as $1/|q|$ in this limit. There is

FIG. 7. Log-log plot of the variance of q_l as a function of system size L at several temperatures.

some evidence, particularly from Fig. 3, that $P(|q|)$ stays flat down to smaller $|q|$ for larger L , though the range of sizes is too small to make a reliable extrapolation.

Figures 5 and 6 show data for $P(q_l)$. As with the distributions of $|q|$, there is a pronounced peak at large q_l values. The width of the distribution decreases with increasing system size.

The variance of $P(q_l)$ is shown in Fig. 7 for several low temperatures. The data are consistent with a power law decrease where the (presumably effective) exponent varies slightly with T . Extrapolating to $T=0$ gives $\mu_l \equiv \theta' + 2(d - d_s) = 0.501 \pm 0.04$. Assuming $\theta' \approx 0$ we find

$$d - d_s = 0.25 \pm 0.02, \quad (8)$$

implying that system-size excitations have a fractal surface in the thermodynamic limit as predicted by the droplet picture.

V. CONCLUSIONS

To conclude, Monte Carlo simulations of the three-dimensional gauge glass at low temperatures show that the structure of the spin-glass state in this particular model agrees qualitatively with previous results for Ising spin glasses⁴ and is in agreement with the KMPY picture. From the nontrivial form of $P(q)$ for a modest range of sizes we infer that system-size excitations cost a finite amount of energy in the thermodynamic limit. From the variance of the link overlap it appears that the surface of these excitations is fractal with $d - d_s = 0.25 \pm 0.02$. Work is in progress on other vector spin-glass models to see if they have the same features found here and for the Ising spin glass.

These results, however, involve a large extrapolation to the thermodynamic limit. There may exist a crossover length at larger sizes to a different behavior such as the droplet theory or an RSB picture.

ACKNOWLEDGMENTS

We would like to thank T. Olson for helpful discussions and correspondence. This work was supported by the National Science Foundation under Grant No. DMR 0086287 and a Campus Laboratory Collaboration (CLC). The numeri-

cal calculations were made possible by use of the UCSC Physics graduate computing cluster funded by the Department of Education Graduate Assistance in the Areas of National Need program. We would also like to thank the University of New Mexico for access to their Albuquerque High Performance Computing Center. This work utilized the UNM-Truchas Linux Clusters.

-
- ¹F. Krzakala and O.C. Martin, Phys. Rev. Lett. **85**, 3013 (2000).
²M. Palassini and A.P. Young, Phys. Rev. Lett. **85**, 3017 (2000).
³E. Marinari, G. Parisi, F. Ricci-Tersenghi, J. Ruiz-Lorenzo, and F. Zuliani, J. Stat. Phys. **98**, 973 (2000).
⁴H.G. Katzgraber, M. Palassini, and A.P. Young, Phys. Rev. B **63**, 184422 (2001).
⁵T. Olson and A.P. Young, Phys. Rev. B **61**, 12 467 (2000).
⁶D.S. Fisher and D.A. Huse, J. Phys. A **20**, L997 (1987); D.A. Huse and D.S. Fisher, *ibid.* **20**, L1005 (1987); D.S. Fisher and D.A. Huse, Phys. Rev. B **38**, 386 (1988).
⁷G. Parisi, Phys. Rev. Lett. **43**, 1754 (1979); J. Phys. A **13**, 1101 (1980); **13**, 1887 (1980); **13**, L115 (1980); Phys. Rev. Lett. **50**, 1946 (1983).
⁸M. Mézard, G. Parisi, and M. A. Virasoro, *Spin Glass Theory and Beyond* (World Scientific, Singapore, 1987).
⁹J.D. Reger, R.N. Bhatt, and A.P. Young, Phys. Rev. Lett. **64**, 1859 (1990).
¹⁰E. Marinari, G. Parisi, and J. J. Ruiz-Lorenzo, in *Spin Glasses and Random Fields*, edited by A. P. Young (World Scientific, Singapore, 1998), and references therein.
¹¹E. Marinari and F. Zuliani, J. Phys. A **32**, 7447 (1999).
¹²A. J. Bray and M. A. Moore, in *Heidelberg Colloquium on Glassy Dynamics and Optimization*, edited by L. Van Hemmen and I. Morgenstern (Springer-Verlag, Berlin, 1986), p. 121.
¹³M.A. Moore, H. Bokil, and B. Drossel, Phys. Rev. Lett. **81**, 4252 (1998).
¹⁴K. Hukushima and K. Nemoto, J. Phys. Soc. Jpn. **65**, 1604 (1996).
¹⁵E. Marinari, in *Advances in Computer Simulation*, edited by J. Kertész and I. Kondor (Springer-Verlag, Berlin, 1998), p. 50.
¹⁶For a review of vortices in superconductors, see G. Blatter, M.V. Feigel'man, V.B. Geshkenbein, A.I. Larkin, and V.M. Vinokur, Rev. Mod. Phys. **66**, 1125 (1994).
¹⁷R.N. Bhatt and A.P. Young, Phys. Rev. Lett. **54**, 924 (1985); Phys. Rev. B **37**, 5606 (1988).
¹⁸J.D. Reger, T.A. Tokuyasu, A.P. Young, and M.P.A. Fisher, Phys. Rev. B **44**, 7147 (1991).
¹⁹M. Cieplak, J.R. Banavar, M.S. Li, and A. Khurana, Phys. Rev. B **45**, 786 (1992).