

Multiple scattering of radiation in clusters of dielectrics

F. J. García de Abajo*

Materials Sciences Division, Lawrence Berkeley National Laboratory, Berkeley, California 94720

(Received 25 January 1999)

A fast, accurate, and general technique for solving Maxwell's equations in the presence of a finite cluster of arbitrarily disposed dielectric objects is presented. The electromagnetic field is first decomposed into multipoles with respect to centers close to each of the objects of the cluster and multiple scattering is carried out until convergence is achieved. Radiation scattering cross sections are obtained using this method for clusters formed by homogeneous spheres and coated spheres made of different materials (Al, Si, and SiO₂), including magnetic ones. Near- and far-field distributions are offered as well. [S0163-1829(99)00531-7]

I. INTRODUCTION

The electromagnetic response of small structures to external sources constitutes a field of intense research due to the promising technological applications of photonic devices.¹ These are in essence materials tailored on the micrometer scale to exhibit unusual properties of transmission² and reflection³ of radiation that can be exploited in the design of filters and mirrors for light. Special emphasis has been placed in the study of periodic structures in connection to photonic bands, which are formed in a similar way as electronic bands in solids.^{4-11,12,13} The photonic properties of these materials have been tested in macroscopic structures using radiation in the GHz regime, where absolute band gaps have already been obtained.^{9,10} On the theory side, different methods have been developed to solve Maxwell's equations in the presence of periodic arrays, including extensions of those used in low-energy electron diffraction,^{4,5,13} plane-wave⁷ and Bloch wave⁸ expansions, and the transfer-matrix approach.^{11,14}

Actual photonic microstructures have been recently employed to confine light in a finite region of space,^{15,16} resulting in well-defined narrow modes that could be eventually used in laser design. This opens the field of photonic chemistry, where arbitrarily distributed micrometer elements are combined to confine, scatter, or emit light. Therefore, theoretical methods suited to solve the electromagnetic problem near clusters of dielectric objects are needed to explore the possibilities offered by these structures as they become increasingly complex. The present work constitutes an attempt to advance in this direction.

The solution of Maxwell's equations finds application in a number of spectroscopy techniques, including spontaneous emission,¹⁷ light emission from scanning tunneling microscopes,¹⁸ scanning near-field optical microscopy (SNOM),^{19,20} and electron-energy-loss spectroscopy (EELS).^{21,14} For instance, SNOM permits one to obtain spatial resolution on a nanometer scale by using an external probe to bring the light of a laser of much larger wavelength to the area of the specimen under examination,¹⁹ posing the problem of understanding the measured far-field induced by local interaction of laser light with structures whose size is much smaller than the wavelength. This technique combines

spatial localization and radiation of energy appropriate to sample valence-band features.²⁰

The simulation of EELS relies on the availability of methods to calculate the field induced by an external electron interacting with complex nanostructures. Beyond some nonrelativistic²²⁻²⁴ and relativistic²⁵⁻²⁷ analytical solutions for simple geometries, numerical methods have been successfully used in this respect.¹⁴ In particular, the relativistic boundary element method²⁸ consists of representing the interfaces of a given heterostructure by means of charges and currents that are solved self-consistently in the presence of an external field.²⁹ However, the magnitude of the numerical problem becomes unaffordable for targets composed of a large number of elements. In an attempt to circumvent this issue, granular structures have been studied using effective-medium theories, taking advantage of averaging over random distributions of objects.³⁰⁻³⁴

The formalism introduced in this paper allows one to reduce the solution of Maxwell's equations in the presence of a cluster of arbitrarily distributed dielectric objects to the knowledge of the individual scattering properties of each of the objects. For that purpose, the electromagnetic field is first decomposed into multipoles around each constituent of the cluster, and multiple elastic scattering of the multipole expansions (MESME) is carried out until convergence is achieved. The time required to numerically solve this problem is proportional to the square of the number of objects in the cluster. This permits one to compute radiation scattering cross sections for a cluster formed by a large number of objects within any desired degree of accuracy.³⁵

The present formalism shares many features with other theories employed to study electron diffraction in solids.³⁶⁻⁴² This is a consequence of the fact that electrons moving in the interstitial region between the atoms of a solid, where the potential is nearly flat, are governed by the same Helmholtz wave equation that rules the propagation of free photons, the only difference lying in the matching conditions satisfied by either the electron wave functions or the electromagnetic fields.¹

The theory of MESME is presented in Sec. II, where a general, computationally efficient technique is derived that allows us to solve Maxwell's equations in clusters of arbitrarily disposed dielectrics. Section III describes further computational details. The application to the simulation of radiation scattering is given in Sec. IV. Some numerical examples

are discussed in Sec. V for clusters of different sizes. Finally, the main conclusions are summarized in Sec. VI. Gaussian atomic units (a.u., that is, $e = m = \hbar = 1$) will be used from now on, unless otherwise specified.

II. MULTIPLE ELASTIC SCATTERING APPROACH TO THE ELECTROMAGNETIC PROBLEM

The electromagnetic field induced by interaction of an external source with a cluster of dielectric objects will be solved in terms of MESME around the objects of the cluster. Some of the underlying ideas involved in this formalism have been borrowed from cluster models for the simulation of electron diffraction in solids,^{39–42} and adapted to deal with the electromagnetic field rather than the electron wave function, exploiting the well-known analogy between electrons in solids and light in nanostructures.^{1,12} A similar extension from electrons to photons was carried out by Ohtaka and co-workers^{4,5,13} allowing methods developed for the simulation of low-energy electron diffraction to be employed in the study of photonic band structures for periodic arrays of spheres, and, more recently, for two-dimensional lattices of cylinders.^{43,44} Instead, finite clusters of arbitrarily distributed objects are considered here, and the photonic properties of a variety of systems are investigated. A full curved-wave (multipole) treatment of the electromagnetic field is used, in combination with improved iterative multiple-scattering techniques. The electron wave functions employed in the electron-diffraction analogy are replaced here by scalar functions that represent the electromagnetic field.⁴⁵ The analysis carried out in this section combines the following elements.³⁵

(a) The external electromagnetic field (e.g., the field set up by incoming radiation or by an external fast electron) is decomposed into multipoles around each object of the cluster. This decomposition is reviewed in Sec. II A using a notation appropriate for its application to MESME.

(b) The scattering on each individual dielectric object is represented by complex scattering matrices, which permit one to obtain the contribution of each object to the scattered field, as discussed in Sec. II B.

(c) The field resulting from scattering on a given object needs to be propagated to other objects of the cluster where further scattering can take place. This involves nontrivial translations of multipoles, which will be examined in Sec. II C.

(d) Finally, the solution of Maxwell's equations is expressed in terms of self-consistently-calculated scattered fields. This leads to the MESME secular equation presented in Sec. II D.

Therefore, this formalism permits one to express the solution of Maxwell's equations in the presence of a cluster of arbitrarily disposed dielectric objects in terms of the individual scattering properties of the constituents of the cluster. Spherical objects, for which the scattering properties are collected in analytical expressions given in Sec. II B, will be considered here for simplicity. The details of the formalism are given next and a more schematic picture is offered in Fig. 1 and its caption.

A. Electromagnetic multipoles and scalar functions

Let us start by expressing the electromagnetic field in terms of multipoles with respect to a given origin \mathbf{r}_α within a

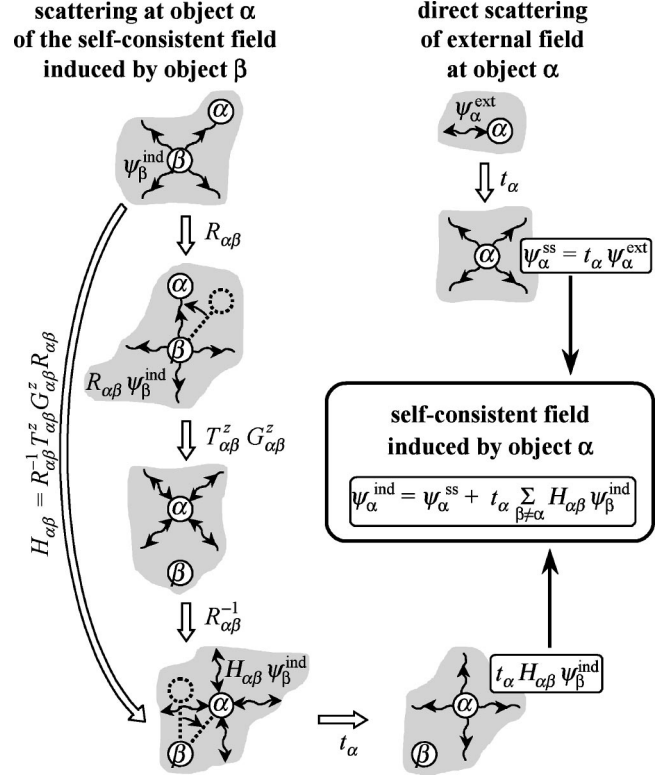


FIG. 1. Diagrammatic representation of the elements involved in the solution of Maxwell's equations in the presence of a cluster of dielectric objects using multiple elastic scattering of multipole expansions [MESME; see Eq. (18), reproduced in this figure as well]. The electromagnetic field is expressed in terms of scalar functions ψ_α , made up of multipoles relative to dielectric objects α, β , etc. The external field acting on object α (upper right corner of this figure), ψ_α^{ext} , is a superposition of spherical plane waves with no net energy flux around the object [double-arrow line; see Eq. (6)]. Its scattering at α , represented by the scattering matrix t_α , gives rise to a superposition of scattered outgoing waves [$t_\alpha \psi_\alpha^{\text{ext}}$; see Eqs. (7) and (8)] which adds to the induced part of the total field produced by self-consistent scattering on object α , ψ_α^{ind} . The remaining contribution to ψ_α^{ind} is provided by the scattering of the self-consistent induced field coming from each other object $\beta \neq \alpha$. The latter is calculated in various steps (starting from the upper left corner): first, the system is rotated by means of a rotation matrix $R_{\alpha\beta}$ such that the bond vector $\mathbf{r}_\alpha - \mathbf{r}_\beta$ is made to point along the positive z axis; the resulting rotated outgoing waves centered at \mathbf{r}_β ($R_{\alpha\beta} \psi_\beta^{\text{ind}}$) are then expressed in terms of spherical plane waves centered at \mathbf{r}_α by linearly translating spherical harmonics ($G_{\alpha\beta}^z$ is the operator for translations along the z axis, as explained in Sec. II C); an additional translation operator $T_{\alpha\beta}^z$ is necessary to compensate for the lack of invariance of multipoles under translation of the origin; the result is then rotated back to the original position and scattered at object α . Finally, summation over $\beta \neq \alpha$ yields Eq. (18).

homogeneous region of space free of charges and currents. The electric field \mathbf{E} is by necessity transversal in that region, and thus, it can be expressed in frequency space ω as^{45,27}

$$\mathbf{E} = \mathbf{L}_\alpha \psi_\alpha^M - \frac{i}{k} \nabla \times \mathbf{L}_\alpha \psi_\alpha^E, \quad (1)$$

where $k = \omega/c$, $\mathbf{L}_\alpha = -i(\mathbf{r} - \mathbf{r}_\alpha) \times \nabla$ is the orbital angular momentum operator relative to the position \mathbf{r}_α , and ψ_α^M and

ψ_α^E are the so-called magnetic and electric scalar functions, respectively. If the region under consideration is filled with medium j and described by its frequency-dependent local dielectric function ϵ_j and magnetic permeability μ_j , one finds, upon insertion of Eq. (1) into Maxwell's equations, that the scalar functions satisfy the wave equation

$$(\nabla^2 + k_j^2)\psi = 0, \quad (2)$$

where $k_j = k\sqrt{\epsilon_j\mu_j}$ (the square root is chosen here to have a non-negative imaginary part). Besides, the magnetic field is found to be

$$\mathbf{H} = -\frac{i}{k\mu_j}\nabla \times \mathbf{L}_\alpha \psi_\alpha^M - \epsilon_j \mathbf{L}_\alpha \psi_\alpha^E, \quad (3)$$

and the scalar functions can be determined from \mathbf{E} using the identities^{45,27}

$$\psi_\alpha^M = \frac{1}{L_\alpha^2} \mathbf{L}_\alpha \cdot \mathbf{E} \quad (4)$$

and

$$\psi_\alpha^E = \frac{i}{k\epsilon_j\mu_j L_\alpha^2} (\mathbf{L}_\alpha \times \nabla) \cdot \mathbf{E}. \quad (5)$$

Notice that the longitudinal modes are explicitly left out of this formalism,^{45,27} preventing from possible numerical problems.

Equation (2) implies that the multipole expansion of the electromagnetic field in the homogeneous region under consideration can be constructed as a sum of free spherical waves. The absence of sources in that region indicates that these waves cannot lead to a net energy flux through any closed surface contained within it, so that they can be termed spherical plane waves by analogy to conventional plane waves. In particular, the scalar functions that describe the external field can be expanded in terms of spherical harmonics Y_L as

$$\psi_\alpha^{\text{ext}}(\mathbf{r}) = \sum_L j_L[k_j(\mathbf{r}-\mathbf{r}_\alpha)]\psi_{\alpha,L}^{\text{ext}}, \quad (6)$$

where $L=(l,m)$, $j_L(\mathbf{u})=i^l j_l(|\mathbf{u}|)Y_L(\hat{\mathbf{u}})$ represents one of the noted spherical plane waves, j_l is a spherical Bessel function, and

$$\psi_\alpha = \begin{bmatrix} \psi_\alpha^M \\ \psi_\alpha^E \end{bmatrix}$$

groups both magnetic and electric components.

B. Single scattering on a dielectric object

Now let us focus on a dielectric object located near \mathbf{r}_α and surrounded by a homogeneous medium $j=0$ of dielectric function ϵ_0 and magnetic permeability μ_0 , so that, for a given frequency component ω , the momentum of the electromagnetic field is $k_0 = k\sqrt{\epsilon_0\mu_0}$ (if $j=0$ refers to the vacuum, one has $\epsilon_0 = \mu_0 = 1$ and $k_0 = k = \omega/c$).

The total electric field is the superposition of the external field and the field induced by scattering on the object under

consideration, that is, $\mathbf{E} = \mathbf{E}^{\text{ext}} + \mathbf{E}^{\text{ind}}$. In addition, the electromagnetic field in the homogeneous medium $j=0$ is a combination of outgoing and incoming spherical waves, represented by spherical Hankel functions $h_l^{(+)}(k_0 r)$ and $h_l^{(-)}(k_0 r)$, respectively.⁴⁶ In particular, \mathbf{E}^{ind} finds its sources in the charges and currents induced by the external field in the dielectric object, and therefore, it has to be a combination of only outgoing waves. In other words, the corresponding scalar functions can be written

$$\psi_\alpha^{\text{ss}}(\mathbf{r}) = \sum_L h_L^{(+)}[k_0(\mathbf{r}-\mathbf{r}_\alpha)]\psi_{\alpha,L}^{\text{ss}}, \quad (7)$$

where $h_L^{(+)}(\mathbf{u}) = i^l h_l^{(+)}(|\mathbf{u}|)Y_L(\hat{\mathbf{u}})$. The superscript ss refers to the fact that the field induced in the presence of just one object can be considered to be the result of single scattering by comparison to the case of a cluster of several objects, where multiple scattering becomes relevant, as shown latter in this work. Equation (7) is valid for \mathbf{r} outside a sphere centered at \mathbf{r}_α and fully containing the dielectric object (i.e., containing the sources of the induced field).

Within the linear-response approximation, the components of the scattered field have to be proportional to those of the external field. Therefore, one can write, in terms of the coefficients of expressions (6) and (7),

$$\psi_{\alpha,L}^{\text{ss}} = \sum_{L'} t_{\alpha,LL'} \psi_{\alpha,L'}^{\text{ext}}, \quad (8)$$

where $t_{\alpha,LL'}$ is the so-called scattering matrix. This is schematically shown in the upper right corner of Fig. 1, where the external field acting on α , represented by a double-arrow line to emphasize the fact that it is made up of spherical plane waves j_L , gives rise to outgoing scattered waves $h_L^{(+)}$ that generate ψ_α^{ss} , represented by outgoing arrows.

The elements of the scattering matrix can be determined for each L by solving Maxwell's equations in the presence of the dielectric object with the asymptotic condition

$$\psi(\mathbf{r}) \approx j_L[k_0(\mathbf{r}-\mathbf{r}_\alpha)] + \sum_{L'} t_{\alpha,L'L} h_{L'}^{(+)}[k_0(\mathbf{r}-\mathbf{r}_\alpha)], \quad r \rightarrow \infty,$$

implicitly defining $t_{\alpha,L'L}$, and the requirement that ψ be finite everywhere. If \mathbf{r}_α lies within a homogeneous region of space j , possibly inside the dielectric object, the finiteness of ψ means that only spherical plane waves $j_{L'}[k_j(\mathbf{r}-\mathbf{r}_\alpha)]$ contribute at that point, since both outgoing and incoming spherical waves diverge at their origin.

Although the formalism presented in this work can be applied to arbitrarily shaped objects, whose scattering matrices are generally dense and can be obtained numerically,²⁹ we will only consider for simplicity spherically symmetric objects, for which the matching conditions satisfied by the fields (i.e., the continuity of the normal displacement, the tangential electric field, the normal magnetic induction, and the tangential magnetic field) reduce, after using Eqs. (1) and (3), to the continuity of ψ_α^M , $\epsilon\psi_\alpha^E$, $(1/\mu)(1+r\partial/\partial r)\psi_\alpha^M$, and $(1+r\partial/\partial r)\psi_\alpha^E$, where local response of the materials involved in the system is assumed and ϵ and μ are the frequency-dependent response functions that take values ϵ_j and μ_j inside medium j . Thus magnetic and electric scalar

functions are not coupled during scattering on a spherically symmetric object. Furthermore, one can write $t_{\alpha,LL'} = t_{\alpha,l}\delta_{LL'}$ in this case.

In particular, for a homogeneous sphere of radius a made of material $j=1$ and surrounded by medium $j=0$, one recovers expressions familiar from Mie's scattering theory.^{47,5,27} More precisely, the scattering matrices for magnetic and electric components read

$$t_l^{M,E} = \frac{-j_l(\rho_0)\alpha_l^{M,E} + [\rho_0 j_l(\rho_0)]'\beta_l^{M,E}}{h_l^{(+)}(\rho_0)\alpha_l^{M,E} - [\rho_0 h_l^{(+)}(\rho_0)]'\beta_l^{M,E}}, \quad (9)$$

where $\alpha_l^M = \mu_0[\rho_1 j_l(\rho_1)]'$, $\beta_l^M = \mu_1 j_l(\rho_1)$, $\alpha_l^E = \epsilon_0[\rho_1 j_l(\rho_1)]'$, $\beta_l^E = \epsilon_1 j_l(\rho_1)$, $\rho_j = k_j a$, and the prime denotes differentiation with respect to ρ_j . Equation (9) reproduces the non-magnetic limit when $\mu_0 = \mu_1 = 1$.²⁷

For a nonmagnetic coated sphere of radii $a \geq b$ made of materials $j=1$ (inner part) and $j=2$ (outer part), and surrounded by vacuum, Eq. (9) is still valid if one sets

$$\alpha_l^M = [\rho_1 j_l(\rho_1)]' A_l - j_l(\rho_1) B_l,$$

$$\beta_l^M = [\rho_1 j_l(\rho_1)]' C_l - j_l(\rho_1) D_l,$$

$$\alpha_l^E = \epsilon_2 [\rho_1 j_l(\rho_1)]' A_l - \epsilon_1 j_l(\rho_1) B_l,$$

$$\beta_l^E = \epsilon_2 \{ \epsilon_2 [\rho_1 j_l(\rho_1)]' C_l - \epsilon_1 j_l(\rho_1) D_l \},$$

$$A_l = j_l(\rho_2) [\rho_3 h_l^{(+)}(\rho_3)]' - h_l^{(+)}(\rho_2) [\rho_3 j_l(\rho_3)]',$$

$$B_l = [\rho_2 j_l(\rho_2)]' [\rho_3 h_l^{(+)}(\rho_3)]' - [\rho_2 h_l^{(+)}(\rho_2)]' [\rho_3 j_l(\rho_3)]',$$

$$C_l = j_l(\rho_2) h_l^{(+)}(\rho_3) - h_l^{(+)}(\rho_2) j_l(\rho_3),$$

$$D_l = [\rho_2 j_l(\rho_2)]' h_l^{(+)}(\rho_3) - [\rho_2 h_l^{(+)}(\rho_2)]' j_l(\rho_3),$$

$\rho_1 = k_1 b$, $\rho_2 = k_2 b$, $\rho_3 = k_2 a$, and $\rho_0 = ka$. This expression converges smoothly to the homogeneous sphere limit when both $b \rightarrow 0$ or $a = b$. It also reproduces the polarizability coefficients in the limit $c \rightarrow \infty$.⁴⁸

Radiation scattering cross sections are presented for isolated spheres in Figs. 2 and 3, and they are discussed in Sec. V.

C. Translation of electromagnetic multipoles

When more than one dielectric object is considered, the results of scattering from each object (e.g., β) need to be propagated to each of the rest of the objects of the cluster (e.g., α), where further scattering events can take place. This involves both (i) translation of the spherical harmonics appearing in the multipole expansions discussed above, and (ii) translation of the origin of multipoles from \mathbf{r}_β to \mathbf{r}_α along the bond vector $\mathbf{d}_{\alpha\beta} = \mathbf{r}_\alpha - \mathbf{r}_\beta$.

(i) *Translation of spherical harmonics.* The spherical harmonics and spherical Hankel functions that made up the multipole expansion of the results of scattering at \mathbf{r}_β are given in coordinates relative to \mathbf{r}_β . They can be expressed with respect to a new origin \mathbf{r}_α by using the formula for translation of spherical harmonics,³⁶⁻³⁸

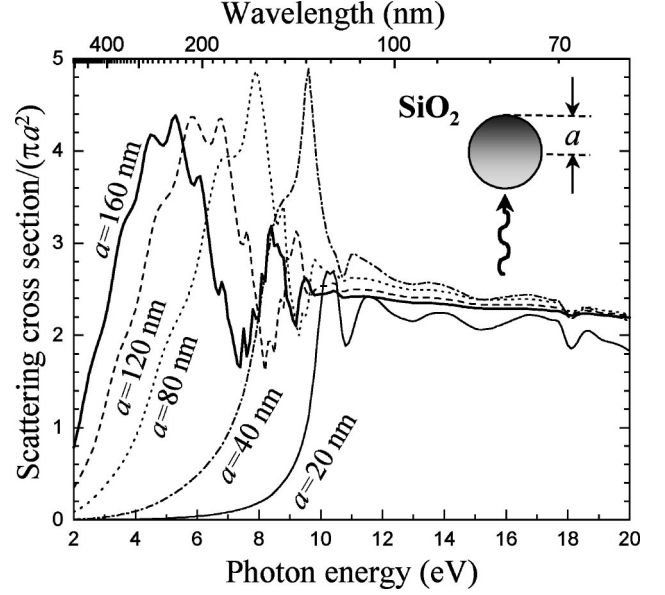


FIG. 2. Total radiation-scattering cross section for an isolated sphere of SiO_2 as a function of incoming photon energy for various values of the sphere radius a , as indicated by means of labels. The cross section, calculated by using Eq. (30), has been normalized to the projected area πa^2 .

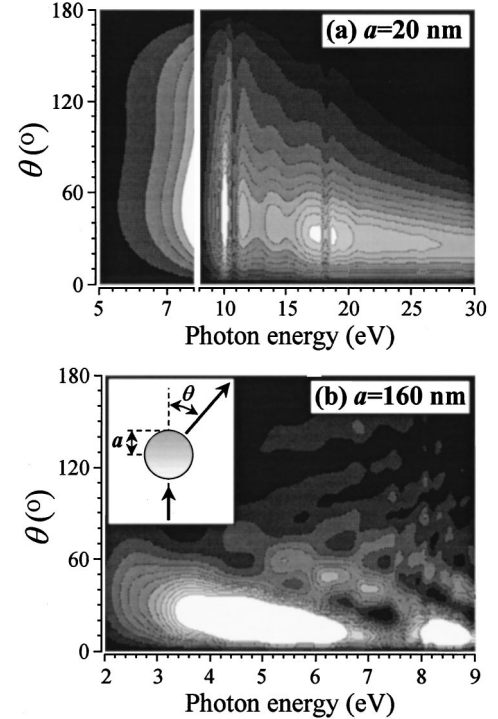


FIG. 3. Dependence of the elastic cross section on scattering angle θ for isolated SiO_2 spheres of radius (a) $a=20$ nm and (b) $a=160$ nm, as given by the integral of Eq. (29) over azimuthal directions. The differential cross section has been multiplied by $\sin\theta$ and it is given per degree and normalized to the projected area πa^2 . The contour curves limiting white areas correspond to values of 0.001, 0.011, and 0.06 in the left part of figure (a), the right part of figure (a), and figure (b), respectively. The distance between consecutive contour curves corresponds to fixed values of 0.0002, 0.001, and 0.005, respectively.

$$h_{L'}^{(+)}[k_0(\mathbf{r}-\mathbf{r}_\beta)] = \sum_L j_L[k_0(\mathbf{r}-\mathbf{r}_\alpha)] G_{\alpha\beta,LL'} \quad (10)$$

(valid provided that $|\mathbf{r}-\mathbf{r}_\alpha| < d_{\alpha\beta}$), where

$$G_{\alpha\beta,LL'} = 4\pi \sum_{L''} h_{L''}^{(+)}(k_0 \mathbf{d}_{\alpha\beta}) \langle L' | L'' | L \rangle$$

is the Green function of Eq. (2), written in the basis set of spherical harmonics attached to \mathbf{r}_α and \mathbf{r}_β , and

$$\langle L' | L'' | L \rangle = \int d\Omega Y_{L'}^*(\Omega) Y_{L''}(\Omega) Y_L(\Omega)$$

is a Gaunt integral. When $\mathbf{d}_{\alpha\beta}$ is directed along the positive z axis (i.e., the quantization direction), the Green function reduces to

$$G_{\alpha\beta,LL'}^z = \delta_{mm'} \sqrt{4\pi} \sum_{l''=|l-l'|}^{l+l'} \sqrt{2l''+1} i^{l''} h_{l''}^{(+)}(k_0 d_{\alpha\beta}) \times \langle l' m | l'' 0 | l m \rangle. \quad (11)$$

A recurrence relation has been reported that permits us to evaluate $G_{\alpha\beta,LL'}^z$ efficiently.⁴¹ Notice that $G_{\alpha\beta}$ propagates magnetic and electric components separately.

(ii) *Translation of the origin of multipoles.* Unfortunately, the scalar functions ψ are not invariant under translations of the origin of coordinates. This comes from a lack of invariance of the angular momentum operator involved in Eq. (1), which transforms as

$$\mathbf{L}_\beta = \mathbf{L}_\alpha - i \mathbf{d}_{\alpha\beta} \times \nabla$$

when changing the origin from \mathbf{r}_β to \mathbf{r}_α . Therefore, the electric field induced by scattering at \mathbf{r}_β can be expressed as

$$\begin{aligned} \mathbf{E}_\beta^{\text{ind}} &= \mathbf{L}_\beta \psi_\beta^{M,\text{ind}} - \frac{i}{k} \nabla \times \mathbf{L}_\beta \psi_\beta^{E,\text{ind}} \\ &= \mathbf{L}_\alpha \psi_\beta^{M,\text{ind}} - \frac{i}{k} \nabla \times \mathbf{L}_\alpha \psi_\beta^{E,\text{ind}} \\ &\quad - i \mathbf{d}_{\alpha\beta} \times \nabla \psi_\beta^{M,\text{ind}} - \frac{1}{k} \nabla \times (\mathbf{d}_{\alpha\beta} \times \nabla) \psi_\beta^{E,\text{ind}} \end{aligned} \quad (12)$$

in terms of operators relative to \mathbf{r}_α . Following the discussion of Sec. II A, $\mathbf{E}_\beta^{\text{ind}}$ can be written

$$\mathbf{E}_\beta^{\text{ind}} = \mathbf{L}_\alpha \psi_{\alpha\beta}^{M,\text{ind}} - \frac{i}{k} \nabla \times \mathbf{L}_\alpha \psi_{\alpha\beta}^{E,\text{ind}},$$

where $\psi_{\alpha\beta}^{\text{ind}}$ accounts for the contribution to the induced field coming from scattering at β and expressed in terms of spherical plane waves around α . Now magnetic and electric components of $\psi_{\alpha\beta}^{\text{ind}}$ can be obtained from Eqs. (4) and (5) after substituting \mathbf{E} by $\mathbf{E}_\beta^{\text{ind}}$ as given by Eq. (12), leading to the following rule of transformation of the scalar functions under translation of the origin along the vector $\mathbf{d}_{\alpha\beta}$:⁴⁹

$$\begin{aligned} \psi_{\alpha\beta}^{M,\text{ind}} &= \psi_\beta^{M,\text{ind}} + i \frac{\mathbf{d}_{\alpha\beta}}{L_\alpha^2} \cdot (\mathbf{L}_\alpha \times \nabla) \psi_\beta^{M,\text{ind}} \\ &\quad + \frac{k \epsilon_0 \mu_0}{L_\alpha^2} \mathbf{d}_{\alpha\beta} \cdot \mathbf{L}_\alpha \psi_\beta^{E,\text{ind}} \end{aligned} \quad (13)$$

and

$$\psi_{\alpha\beta}^{E,\text{ind}} = \psi_\beta^{E,\text{ind}} + i \frac{\mathbf{d}_{\alpha\beta}}{L_\alpha^2} \cdot (\mathbf{L}_\alpha \times \nabla) \psi_\beta^{E,\text{ind}} - \frac{k}{L_\alpha^2} \mathbf{d}_{\alpha\beta} \cdot \mathbf{L}_\alpha \psi_\beta^{M,\text{ind}}, \quad (14)$$

where the substitution $\nabla^2 \rightarrow -k_0^2$ has been performed. Now a linear translation operator T can be defined to represent this rule. T acts on the multipole components of the above scalar functions and takes a particularly simple form when $\mathbf{d}_{\alpha\beta}$ is directed along the positive z axis. More explicitly,

$$\begin{bmatrix} \psi_{\alpha\beta,L}^{M,\text{ind}} \\ \psi_{\alpha\beta,L}^{E,\text{ind}} \end{bmatrix} = \sum_{L'} T_{\alpha\beta,LL'}^z \begin{bmatrix} \psi_{\beta,L'}^{M,\text{ind}} \\ \psi_{\beta,L'}^{E,\text{ind}} \end{bmatrix},$$

where

$$\begin{aligned} T_{\alpha\beta,LL'}^z &= \begin{bmatrix} \delta_{LL'} & 0 \\ 0 & \delta_{LL'} \end{bmatrix} \\ &\quad + \delta_{mm'} k_0 d_{\alpha\beta} \begin{bmatrix} p_{ll'm} & q_{ll'm} \sqrt{\epsilon_0 \mu_0} \\ \frac{-q_{ll'm}}{\sqrt{\epsilon_0 \mu_0}} & p_{ll'm} \end{bmatrix}, \end{aligned} \quad (15)$$

$$q_{ll'm} = \frac{m \delta_{l,l'}}{l(l+1)},$$

$$p_{ll'm} = \delta_{l+1,l'} D_{l+1,m} - \delta_{l-1,l'} D_L,$$

and

$$D_L = \frac{i}{l} \sqrt{\frac{(l+m)(l-m)}{(2l-1)(2l+1)}}, \quad (16)$$

as shown in the Appendix.

Notice that ψ_β^{ind} is made up of spherical outgoing waves ($h_L^{(+)}$) centered at \mathbf{r}_β (this is represented by outgoing arrows centered around β in the upper left corner of Fig. 1). The translation of spherical harmonics discussed in point (i) above allows one to express ψ_β^{ind} in terms of spherical plane waves (j_L) centered at a new origin \mathbf{r}_α (see the diagram on the left part of Fig. 1). On the other hand, the translation of the origin of multipoles discussed in point (ii) operates on ψ_β^{ind} [already translated as explained in point (i)] to produce $\psi_{\alpha\beta}^{\text{ind}}$, which is also made up of spherical plane waves centered at \mathbf{r}_α .

In brief, the combination of these two operators allows us to obtain the coefficients of the multipole expansion of ψ_β^{ind} around α as $T_{\alpha\beta} G_{\alpha\beta} \tilde{\psi}_\beta^{\text{ind}}$, where $\tilde{\psi}_\beta^{\text{ind}}$ represents the vector formed by the coefficients $\psi_{\beta,L}^{\text{ind}}$ of the multiple expansion of ψ_β^{ind} around β .

D. Multiple scattering

Now let us focus on a cluster of dielectric objects labeled by coordinate vectors \mathbf{r}_α . Our aim is to obtain the scalar functions appropriate for the electromagnetic field that satisfies Maxwell's equations in the presence of the cluster, and to relate these functions to the scattering properties of each individual component of the cluster.

The induced part of the self-consistent scattered field will be expressed as the sum of contributions coming from the different cluster components α , that is,

$$\psi^{\text{ind}}(\mathbf{r}) = \sum_{\alpha} \psi_{\alpha}^{\text{ind}}(\mathbf{r}).$$

Since $\psi_{\alpha}^{\text{ind}}$ finds its origin in the charges and currents induced in object α , it has to be a combination of spherical outgoing waves centered around \mathbf{r}_α :

$$\psi_{\alpha}^{\text{ind}}(\mathbf{r}) = \sum_L h_L^{(+)} [k_0(\mathbf{r} - \mathbf{r}_\alpha)] \psi_{\alpha,L}^{\text{ind}}. \quad (17)$$

Equation (17) is valid for \mathbf{r} outside a sphere centered at \mathbf{r}_α and fully containing object α .

Within the single-scattering (ss) approach, $\psi_{\alpha}^{\text{ind}}$ is given by the scattered field $\psi_{\alpha}^{\text{ss}}$ discussed in Sec. II B. This results from single scattering of the external field as expressed in Eq. (8), conveniently written using matrix notation as

$$\tilde{\psi}_{\alpha}^{\text{ss}} = t_{\alpha} \tilde{\psi}_{\alpha}^{\text{ext}},$$

where the vector $\tilde{\psi}_{\alpha}^{\text{ss}(\text{ext})}$ has components $\psi_{\alpha,L}^{\text{ss}(\text{ext})}$ and the matrix t_{α} has components $t_{\alpha,LL'}$.

The singly scattered field coming from a certain object β can in turn suffer scattering on every other object of the cluster $\alpha \neq \beta$. That is, $\psi_{\alpha}^{\text{ind}}$ receives contributions coming from previous scattering on every other object $\beta \neq \alpha$. This leads to a self-consistent relation for the induced field that can be written as

$$\lambda \tilde{\psi}_{\alpha}^{\text{ind}} = \tilde{\psi}_{\alpha}^{\text{ss}} + t_{\alpha} \sum_{\beta \neq \alpha} H_{\alpha\beta} \tilde{\psi}_{\beta}^{\text{ind}}, \quad (18)$$

where the first term on the right-hand side is the result of direct single scattering of the external field at α ; the second term describes both the propagation of the self-consistently scattered field originating in every other object $\beta \neq \alpha$ from β to α and the subsequent scattering of this field at α ; $\lambda = 1$ is introduced for convenience; and the operator $H_{\alpha\beta}$ accounts for the propagation just noted. $H_{\alpha\beta}$ can be conveniently constructed in four steps as follows (see the left part of Fig. 1 for a schematic representation of this procedure).³⁵

(i) Following previous work of electron diffraction in solids,^{36,39} the bond vector $\mathbf{d}_{\alpha\beta}$ is rotated onto the z axis by using a rotation matrix $R_{\alpha\beta}$,⁴⁶ which acts on the spherical harmonics of the multipole expansion of $\psi_{\beta}^{\text{ind}}$. The Euler angles corresponding to this rotation can be chosen $(0, \theta, \pi - \varphi)$ if (θ, φ) are the polar angles of $\mathbf{d}_{\alpha\beta}$.

(ii) The resulting rotated scalar functions are then propagated a distance $d_{\alpha\beta}$ along the positive direction of the z axis. This is accomplished by multiplying by the Green function $G_{\alpha\beta}^z$ given by Eq. (11).

(iii) The lack of invariance of multipoles under translations of the origin needs to be overcome by multiplying by the linear translation operator $T_{\alpha\beta}^z$ described in Sec. III C [Eq. (15)].

(iv) Finally, the z axis has to be rotated back onto the $\mathbf{d}_{\alpha\beta}$ direction using $R_{\alpha\beta}^{-1}$, and one has

$$H_{\alpha\beta} = R_{\alpha\beta}^{-1} T_{\alpha\beta}^z G_{\alpha\beta}^z R_{\alpha\beta}. \quad (19)$$

The analogy with electron diffraction in solids^{38,39} is complete, except for the lack of invariance just pointed out.

The rotation matrices can be in turn decomposed into azimuthal and polar rotations as⁴⁶

$$R_{\alpha\beta,LL'} = \delta_{ll'} R_{mm'}^{(l)}(0, \theta, 0) (-1)^{m'} e^{i\varphi m'}, \quad (20)$$

and this helps to soften the computational demand in the evaluation of Eq. (18), as shown in Sec. III.

III. COMPUTATIONAL PROCEDURE

An efficient scheme is presented in this section that allows us to solve Eq. (18) within affordable limits in both computation time and storage demand. The operators involved in Eqs. (18)–(20) are approximated by finite matrices of dimension $[(l_{\text{max}} + 1)^2]^2$, where l_{max} is the maximum orbital angular momentum number under consideration (this is for each component, electric and magnetic; note that Green functions and rotation matrices act independently on each of these components). In the calculations that follow, convergence has been achieved for $l_{\text{max}} \leq 12$ in most cases.

The direct inversion of Eq. (18) is computationally prohibitive for large clusters. A procedure for solving it that mimics the multiple-scattering expansion consists in starting with $\tilde{\psi}_{\alpha}^{\text{ind},1} = \tilde{\psi}_{\alpha}^{\text{ss}}$ as a guess for $\tilde{\psi}_{\alpha}^{\text{ind}}$, and then calculating the result of scattering up to an order $n > 2$ by using the iterative relation

$$\tilde{\psi}_{\alpha}^{\text{ind},n} = \tilde{\psi}_{\alpha}^{\text{ss}} + t_{\alpha} \sum_{\beta \neq \alpha} H_{\alpha\beta} \tilde{\psi}_{\beta}^{\text{ind},n-1}. \quad (21)$$

This is nothing but the Taylor expansion of $\tilde{\psi}_{\alpha}$'s in powers of t_{α} 's. This procedure has been found computationally convenient in many cases where $\tilde{\psi}_{\alpha}^{\text{ind},n} \rightarrow \tilde{\psi}_{\alpha}^{\text{ind}}$ as $n \rightarrow \infty$, particularly in electron diffraction in solids,^{39,42} but it may lead to divergences when any of the eigenvalues of tH has a modulus larger than 1.

Here Eq. (18) has been solved by using the recursion method,^{50,51} where λ plays the same role as the energy in former electronic band-structure calculations. Although one is only interested in the value $\lambda = 1$, the recursion method results advantageous because it is fully convergent even in situations where Eq. (21) leads to divergences.³⁸ This is the case in many of the examples offered below, where strong scatterers are placed relatively close to each other.

The computational costs of both the iteration procedure and the recursion method is basically coming from the multiplications $H_{\alpha\beta} \tilde{\psi}_{\beta}^{\text{ind}}$. These two methods require the same number of those multiplications per iteration, namely, $N(N-1)$, where N is the number of objects in the cluster. The factorization of $H_{\alpha\beta}$ given in Eqs. (19) and (20) has the

virtue of reducing both (a) the storage capacity required to evaluate those multiplications and (b) the computational effort.

(a) A significant reduction in memory requirements can be accomplished if the coefficients of each polar rotation $R_{mm'}^{(l)}(0, \theta, 0)$ [see Eq. (20)], each azimuthal rotation $(-1)^{m'} e^{i\varphi m'}$, each translation of spherical harmonics $G_{\alpha\beta}^z$, and each translation of the origin of multipoles $T_{\alpha\beta}^z$ are computed and stored only the first time that they are encountered along the entire calculation. In addition, for any arbitrary cluster, the points \mathbf{r}_α can be chosen in such a way that they form a highly symmetrical mesh, where many bond distances and angles are repeated (this might require that the points \mathbf{r}_α do not lie necessarily in the geometrical centers of the objects that they label). If this is the case, the total number of different bond distances and bond polar angles is considerably smaller than the number of bond vectors $\mathbf{d}_{\alpha\beta}$. To illustrate this, let us put forward the example of a simple-cubic-lattice cube of side p in units of the lattice constant; this cluster contains p^3 nodes and $(2p-1)^3-1$ different bond vectors, a number that has to be compared with at most $3p^2$ bond distances, since the square of the distance between any pair of nodes has to equal an integral number, and the distance between opposite corners is $\sqrt{3}p$ (a better estimate for this case results in $\approx 1.8p^2$ different bond distances for large p values).

(b) For a given maximum value of the orbital angular-momentum number l_{\max} , the dimension of each vector $\tilde{\psi}_\alpha$ is $(l_{\max}+1)^2$ (for each component, electric and magnetic), so that every matrix-vector product $H_{\alpha\beta}\tilde{\psi}_\beta$ involves $4(l_{\max}+1)^4$ complex multiplications. However, all of the matrices that appear on the right-hand side of Eq. (19) are sparse, as one can see from Eqs. (11), (15), and (20). A detailed inspection leads to the conclusion that only $\approx (20/3)(l_{\max}+1)^3$ complex multiplications are needed to evaluate the product $H_{\alpha\beta}\tilde{\psi}_\beta$ when $H_{\alpha\beta}$ is decomposed as shown in Eq. (19). This is a factor of $\approx l_{\max}/2$ smaller than the direct matrix-vector product.

Further reduction in computational and storage demand can be achieved if symmetry relations for the Green functions and the rotation matrices⁴⁶ are used (e.g., $G_{\alpha\beta,lm,l'm}^z = G_{\alpha\beta,l'-m,l-m}^z$).

Notice that multiplications by scattering matrices t_α do not affect significantly the total computational costs for relatively large clusters (e.g., above ten objects), since they take place just outside the summation over cluster objects β in Eq. (18), so that only N of those multiplications are needed per iteration.

A fully automated implementation of these ideas has been performed, resulting in a new code (MESME) that provides the solution of Eq. (18) for clusters of arbitrarily distributed constituents by investing a computation time

$$CPU \approx AN^2(l_{\max}+1)^3,$$

where A is a constant ($A \sim 10^{-4}$ s on a Pentium at 333 MHz).

IV. APPLICATION TO THE SCATTERING OF RADIATION

The formalism presented in Sec. II will be applied here to the study of scattering of radiation in a cluster of arbitrarily distributed dielectric objects. Section IV A will be devoted to derive analytical expressions for the multipole expansion coefficients of an incoming plane wave. The far field produced by the charges and currents induced in the cluster will be discussed in Sec. IV B.

A. Multipoles of the incoming radiation

When the cluster is illuminated by a plane wave, the external electric field can be written⁵²

$$\mathbf{E}^{\text{ext}} = \vec{\epsilon} e^{i\mathbf{K}_i \cdot \mathbf{r}}, \quad (22)$$

where $\vec{\epsilon}$ is the (complex) polarization vector, which is assumed to be normalized as $|\vec{\epsilon}| = 1$, and \mathbf{K}_i is the momentum of the incoming light. \mathbf{E}^{ext} must satisfy the wave equation in the surrounding medium $j=0$, and therefore, $|\mathbf{K}_i| = k_0 = k\sqrt{\epsilon_0\mu_0}$, where $k = \omega/c$.⁵²

The multipole coefficients of the scalar functions introduced in Sec. II A can be obtained by expanding Eq. (22) in spherical plane waves and inserting the resulting expression into Eqs. (4) and (5).⁴⁵ One finds

$$\begin{bmatrix} \psi_{\alpha,L}^{M,\text{ext}} \\ \psi_{\alpha,L}^{E,\text{ext}} \end{bmatrix} = \frac{4\pi e^{i\mathbf{K}_i \cdot \mathbf{r}_\alpha} \begin{bmatrix} \tilde{\zeta}_L^*(\Omega_i) \cdot \vec{\epsilon} \\ \tilde{\zeta}_L^*(\Omega_i) \cdot (\vec{\epsilon} \times \mathbf{K}_i) / (k\epsilon_0\mu_0) \end{bmatrix}}{l(l+1)}, \quad (23)$$

where Ω_i refers to the polar angles of \mathbf{K}_i ,

$$\begin{aligned} \tilde{\zeta}_L(\Omega) &= \mathbf{L}Y_L(\Omega) \\ &= \begin{bmatrix} \frac{C_+}{2} Y_{lm+1}(\Omega) + \frac{C_-}{2} Y_{lm-1}(\Omega), & -\frac{iC_+}{2} Y_{lm+1}(\Omega) \\ & +\frac{iC_-}{2} Y_{lm-1}(\Omega), \quad m Y_L(\Omega) \end{bmatrix}, \end{aligned} \quad (24)$$

and $C_\pm = \sqrt{(l \pm m + 1)(l \mp m)}$.

B. Induced electromagnetic field in the far-field limit and scattering cross section

The induced electric field can be obtained by inserting into Eq. (1) the self-consistently calculated induced part of the scalar functions, made up of spherical outgoing waves $h_L^{(+)}[k_0(\mathbf{r}-\mathbf{r}_\alpha)]$ in the interstitial medium $j=0$ just outside the cluster objects. At very large distances from the cluster, the spherical outgoing waves behave like

$$h_L^{(+)}[k_0(\mathbf{r}-\mathbf{r}_\alpha)] \approx \frac{e^{ik_0 r}}{k_0 r} Y_L(\hat{\mathbf{r}}) e^{-i\mathbf{K}_f \cdot \mathbf{r}_\alpha}, \quad r \rightarrow \infty,$$

where $\mathbf{K}_f = k_0 \hat{\mathbf{r}}$. Furthermore, ∇ can be substituted by $i\mathbf{K}_f$ in Eq. (1) (this represents the leading term in the $r \rightarrow \infty$ limit). Using Eqs. (1), (3), and (17), the induced electric and magnetic far fields are found to be

$$\mathbf{E}^{\text{ind}} \simeq \mathbf{f}(\Omega) \frac{e^{ik_0 r}}{r}, \quad r \rightarrow \infty, \quad (25)$$

and

$$\mathbf{H}^{\text{ind}} \simeq \sqrt{\epsilon_0/\mu_0} \hat{\mathbf{r}} \times \mathbf{f}(\Omega) \frac{e^{ik_0 r}}{r}, \quad r \rightarrow \infty, \quad (26)$$

where

$$\begin{aligned} \mathbf{f}(\Omega) = & \sum_{\alpha} e^{-i\mathbf{K}_{\alpha} \cdot \mathbf{r}_{\alpha}} \sum_L [\vec{\zeta}_L(\Omega) \psi_{\alpha,L}^{M,\text{ind}}/k_0 \\ & + \hat{\mathbf{r}} \times \vec{\zeta}_L(\Omega) \psi_{\alpha,L}^{E,\text{ind}}/k], \end{aligned} \quad (27)$$

is the scattering amplitude and Ω denotes the polar angles of \mathbf{r} .

The radiated energy associated to the induced far field can be derived from the energy flux across an arbitrarily large sphere of radius r centered at the cluster, and this flux can be in turn calculated from the integral of the normal Poynting vector as⁵²

$$\Delta E^{\text{rad}} = \frac{c}{4\pi} \int dt \int d\Omega r^2 [\mathbf{E}^{\text{ind}}(\mathbf{r}, t) \times \mathbf{H}^{\text{ind}}(\mathbf{r}, t)] \cdot \hat{\mathbf{r}},$$

where the integral over the time has been included. Expressing the fields in terms of their frequency components, one finds

$$\Delta E^{\text{rad}} = \int_0^{\infty} \omega d\omega \int d\Omega \Gamma^{\text{rad}}(\omega, \Omega),$$

where

$$\Gamma^{\text{rad}}(\omega, \Omega) = \frac{r^2}{4\pi^2 k} \text{Re}\{[\mathbf{E}^{\text{ind}}(\omega) \times \mathbf{H}^{\text{ind}}(-\omega)] \cdot \hat{\mathbf{r}}\} \quad (28)$$

can be interpreted as the probability of radiating a photon of energy ω per unit of energy range and unit of solid angle around the direction Ω .

Inserting Eqs. (25) and (26) into Eq. (28), and noticing that $\mathbf{f} \cdot \hat{\mathbf{r}} = 0$,⁵³ one finds

$$\Gamma^{\text{rad}}(\omega, \Omega) = \frac{\sqrt{\epsilon_0/\mu_0}}{4\pi^2 k} \frac{d\sigma^{\text{el}}(\omega)}{d\Omega},$$

where

$$\frac{d\sigma^{\text{el}}(\omega)}{d\Omega} = |\mathbf{f}(\Omega)|^2 \quad (29)$$

represents the differential cross section for elastically scattered photons, which can be computed from the coefficients of the induced scalar functions using Eqs. (24) and (27).

The total interaction cross section can be divided as $\sigma^{\text{tot}} = \sigma^{\text{el}} + \sigma^{\text{inel}}$, where σ^{inel} accounts for inelastic losses, connected to absorption of the incoming radiation by objects of the cluster. The total cross section can be expressed in terms of the imaginary part of the scattering factor \mathbf{f} along the forward direction by means of the optical theorem for radiation, which reads⁵²

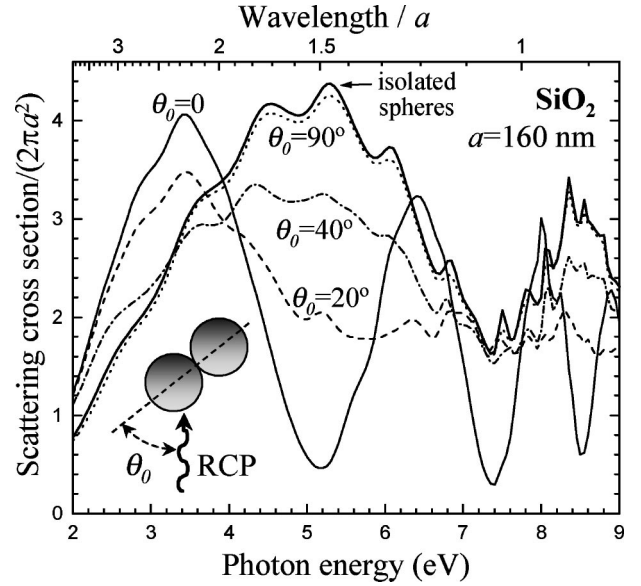


FIG. 4. Total radiation-scattering cross section for two touching SiO_2 spheres of radius $a = 160$ nm as a function of incoming photon energy for different orientations of the cluster (see the inset). The incoming radiation is right circularly polarized (RCP). The cross section has been normalized to the projected area of two spheres $2\pi a^2$. The result for an isolated sphere (multiplied by a factor of 2) is also shown for comparison. The wavelength of the radiation is given on the upper scale, normalized to a .

$$\sigma^{\text{tot}}(\omega) = \frac{4\pi}{k_0} \text{Im}\{\mathbf{f}(\Omega_i) \cdot \vec{\epsilon}^*\}. \quad (30)$$

Total cross sections for various clusters of spheres are represented in Figs. 2, 4, 6, and 12–15. Elastic cross sections are shown in Figs. 3, 6–8, and 13. In addition, near-field distributions are illustrated in Figs. 5 and 9–11.

V. RESULTS AND DISCUSSION

Clusters formed by spheres made of Al, SiO_2 , and Si are considered next. Their scattering matrices have been calculated using Eq. (9), where the frequency-dependent dielectric functions of these materials are employed. In particular, the response of Al has been approximated by a Drude dielectric function with bulk plasma energy $\omega_p = 15$ eV and damping $\eta = 1.06$ eV. The dielectric functions of Si and SiO_2 have been taken from optical data.⁵⁴

Figure 2 shows the total cross section of isolated SiO_2 spheres, as calculated from Eq. (30). Different sphere radius a have been considered and the results have been normalized to the projected area πa^2 . Substantial variations in the cross section can be observed in the region below 10 eV, where the dielectric function has a smooth structure and is basically real. As the sphere size increases, the low-energy peak in the cross section shifts toward lower energies. This is connected to retardation effects in the electromagnetic signal when the sphere radius is comparable in size to the wavelength of the radiation (see the upper scale in Fig. 2). In a simplified picture where one considers a frequency-independent dielectric constant (actually, this is nearly the case in SiO_2 in the energy range 3–8 eV, where $\text{Re}\{\epsilon\} \approx 2.1 - 2.9 \gg \text{Im}\{\epsilon\}$), one

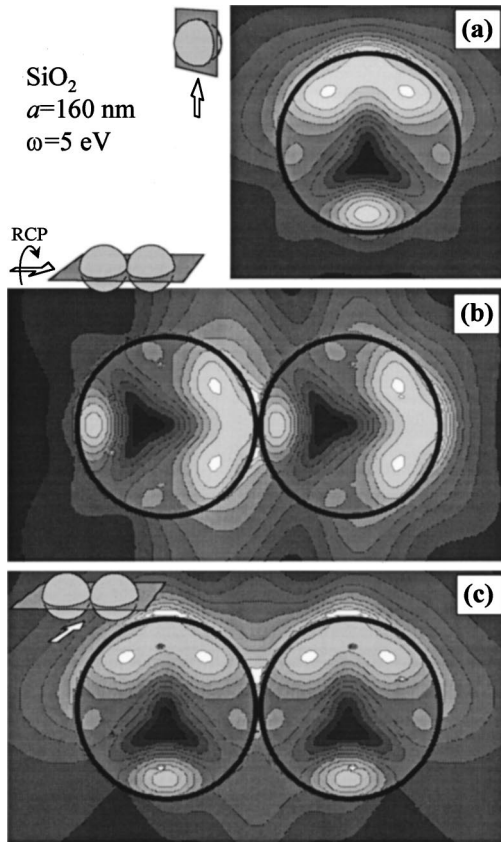


FIG. 5. Contour maps of the square of the induced-electric-field strength in the vicinity of SiO_2 spheres of radius $a=160 \text{ nm}$ illuminated by RCP radiation of 5 eV in energy. The cases of (a) an isolated sphere and (b) and (c) a cluster of two touching spheres with two different orientations relative to the incoming radiation have been considered. The plane of representation is schematically shown in the insets relative to the incoming beam direction and the position of the spheres. The sphere surfaces are represented by thick circumferences on the figures. Contour curves limiting white areas correspond to a value of 2.2 a.u. The difference in value between consecutive contour curves is 0.2 a.u. The strength of the external field has been normalized to 1 a.u.

can argue that the frequency of the eigenmodes will scale with a in such a way that $\omega a/c$ is a dimensionless constant number, and hence, the larger the radius a , the smaller the frequency ω . For energies above 12 eV the normalized cross section depends very weakly on a .

Angular distributions of elastically scattered photons are represented in Fig. 3 for two different radii of SiO_2 spheres, as calculated from Eq. (29). The angular distribution of scattered radiation has a marked anisotropic character. Notice in particular that forward scattering appears to be dominant over a wide energy range for the larger sphere under consideration ($a=160 \text{ nm}$).

Actually, this anisotropy in scattering is translated into an orientational dependence of the total cross section in the case of the two-sphere SiO_2 cluster of Fig. 4, where right circularly polarized radiation⁵² (RCP) has been considered. The result derived from isolated spheres (thick solid curve, multiplied by a factor of 2) is very close to the one obtained when the dimer is oriented perpendicular to the direction of the incoming radiation. If the dimer is aligned with the di-

rection of incidence of the radiation, forward scattering on the lower sphere focuses scattered radiation on the second sphere, and this contributes to enhance the role of multiple scattering in this case (thin solid curve).⁵⁵ It should be pointed out that the single-scattering approach results in a total cross section that equals the sum of cross sections of the components of the cluster [see Eqs. (27) and (30)].

In Fig. 5, the near field has been represented for the two extreme orientations of the SiO_2 dimer considered above, and also for the isolated sphere. The magnitude represented in the figure is the square of the induced electric field, which is discontinuous on the sphere surfaces, represented by thick circumferences. Notice that the variations of the field in each sphere relative to the case of an isolated sphere are very small. Nevertheless, the maximum of the induced field, located on the side of the sphere opposite to the incoming radiation, enhances the interaction between the two spheres of the dimer when this is oriented along the direction of incidence of the radiation.

Elastic and total cross sections, given by Eqs. (29) and (30), respectively, have been compared in Fig. 6(a) for clusters of Al spheres of radius $a=19 \text{ nm}$. Elastic-scattering cross sections have been obtained by integrating the differential cross section over angles of scattering. The elastic cross section lies always below the total one, and the difference between the two of them accounts for absorption of photons by the spheres. The different features of the energy dependence of the cross section for the isolated sphere are shifted and split when one considers clusters of spheres. A significant orientational dependence can be observed in the case of the dimer, where low-energy modes of different energy are excited depending on the orientation of the cluster relative to the incoming radiation. In particular, peak A stays at nearly the same energy for clusters of three and four spheres, indicating that this feature is connected to sphere-sphere interaction in dimers oriented perpendicularly with respect to the direction of the incoming beam. RCP radiation is considered in Fig. 6(a), but a strong dependence on the polarization is observed for oriented clusters, like the dimer of Fig. 6(b). Only the electric-field component of the external radiation parallel to the dimer axis contributes to excite the low-energy peak at 5.2 eV . Notice the triple-crossing point E , which occurs due to both the symmetry of the cluster, implying that $\sigma_{\text{RCP}} = \sigma_{\text{LCP}}$ (i.e., right and left circularly polarized radiation lead to the same cross section), and the general identity $\sigma_{\text{RCP}} + \sigma_{\text{LCP}} = \sigma_{\text{LP}||x} + \sigma_{\text{p}\perp x}$, where the notation of Fig. 6(b) has been adopted.

The scattering on Al spheres has a strong electric character for the sphere radius under consideration. Actually, if one sets $t_l^M = 0$ in the calculations presented in Fig. 6, the results are nearly indistinguishable on the scale of the figure. This was expected from previous results on the magnitude of the magnetic components of the scattering matrix for Drude spheres.²⁷ However, for the SiO_2 spheres of Figs. 2 and 4 the magnetic components play a significant role even for the smallest spheres ($a=20 \text{ nm}$), so that t_l^M cannot be dismissed in that case.

The scattering-angle distributions of some of the elastic cross sections discussed in Fig. 6(a) are analyzed in Fig. 7. The dimer oriented along the direction of incidence of the radiation [Fig. 7(b)] has a focusing effect on the scattered

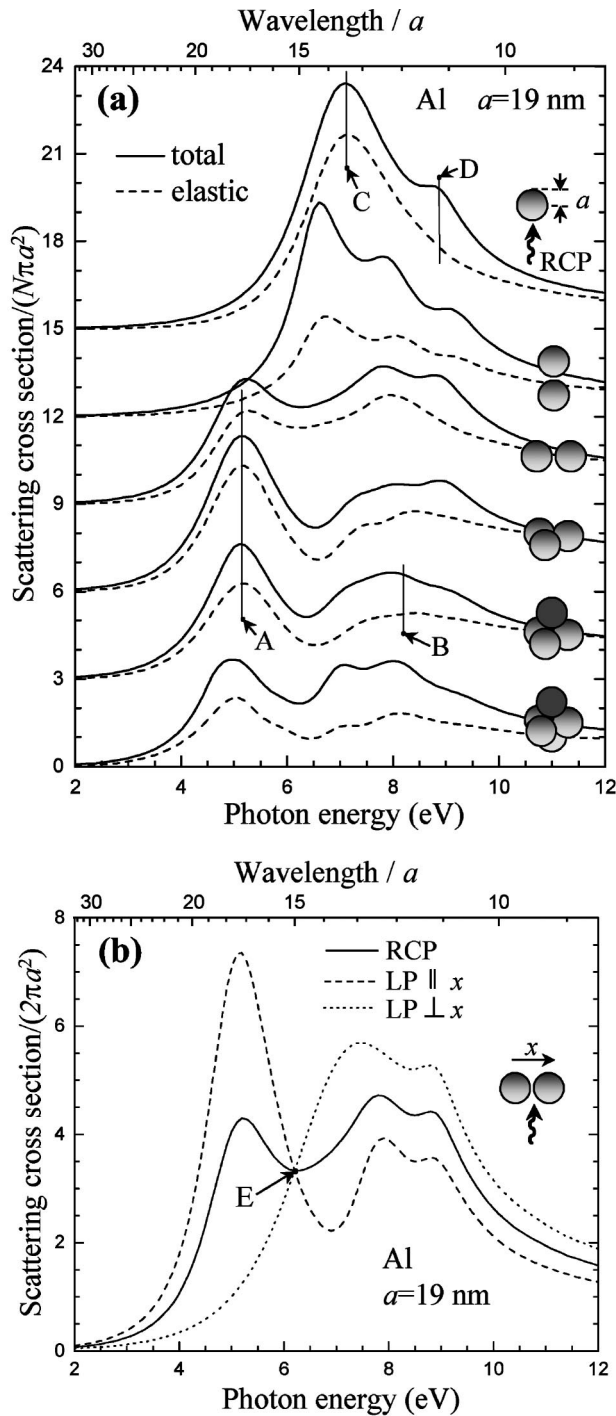


FIG. 6. (a) Total radiation scattering cross section (solid curves) and elastic scattering cross section (broken curves) for clusters of 1–5 Al spheres of radius $a = 19$ nm. The separation between sphere surfaces is 2 nm. The cross section has been normalized to the number of spheres N in each case and the projected area of one sphere πa^2 . The radiation is RCP, and is moving upwards, as shown in the upper inset. The sphere clusters are disposed as illustrated in the rest of the insets. Consecutive curves have been shifted a value of 3 upwards to improve readability. The wavelength of the radiation is given on the upper scale, normalized to a . (b) Dependence of the total scattering cross section on the polarization of the incoming radiation for the horizontal two-sphere cluster considered in (a). The cases of linear polarization (LP) parallel and perpendicular to the bond vector have been considered, as well as circular polarization.

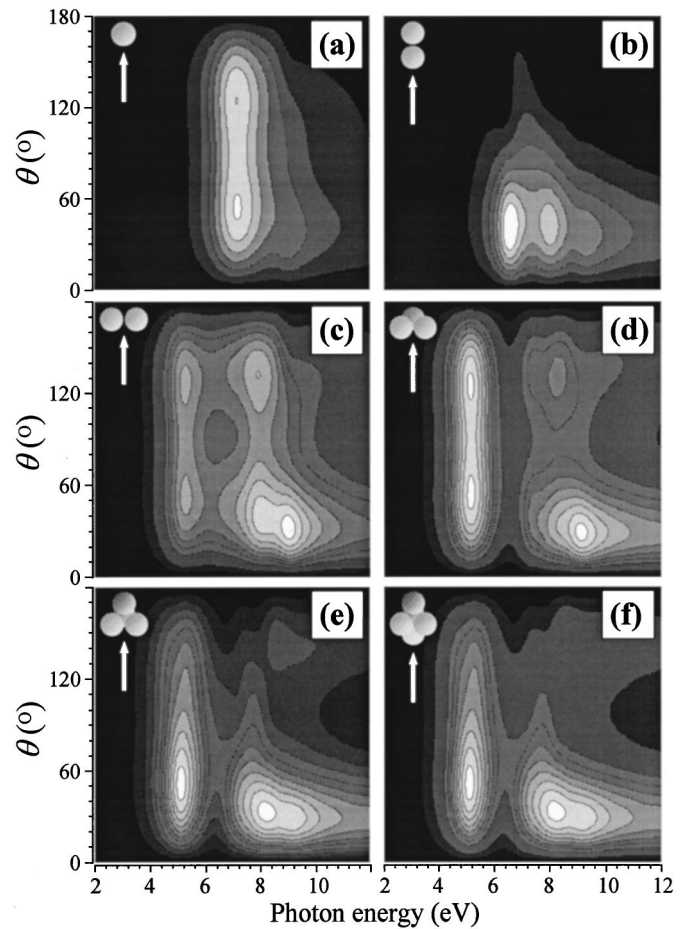


FIG. 7. Dependence of the elastic cross section on scattering angle θ for clusters of 1–5 Al spheres of radius $a = 19$ nm, disposed as shown in the insets. The separation between sphere surfaces is 2 nm. The incoming radiation is RCP, and it is incident as shown by white arrows. The differential cross section has been integrated over azimuthal directions and multiplied by $\sin\theta$ and it is given per degree and normalized to both the number of spheres in each case and the projected area of one sphere πa^2 . Contour curves limiting white areas correspond to values of 0.035 in (a) and (b), 0.022 in (c)–(e), and 0.026 in (f). Consecutive contour curves differ by a value of 0.005 in (a) and (b), and 0.002 in (c)–(f).

radiation, enhancing forward scattering as compared to the case of an isolated sphere⁵⁵ [see Fig. 7(a)]. The two orientations of the dimer contemplated in Fig. 7 showed certain similarities in the integrated cross section for $\omega > 7$ eV [see Fig. 6(a)], but their angular distributions reveal notorious differences. Lower-energy peaks are observed when the dimer is oriented perpendicular to the radiation direction [Fig. 7(c)]. Notice the symmetry between forward and backward scattering in the low-energy region in this case. Instead, the high-energy region has a dominant forward-scattering character. When a third sphere is added to form a triangle oriented normal to the incoming radiation [Fig. 7(d)], there are not substantial changes as compared to the dimer case. However, a fourth sphere on top of the triangle [see Fig. 7(e)] and a fifth underneath [Fig. 7(f)] produce an effect of focusing of the scattered radiation along the forward direction.

Even more dramatic differences between different clusters are observed in the doubly-differential angular distributions

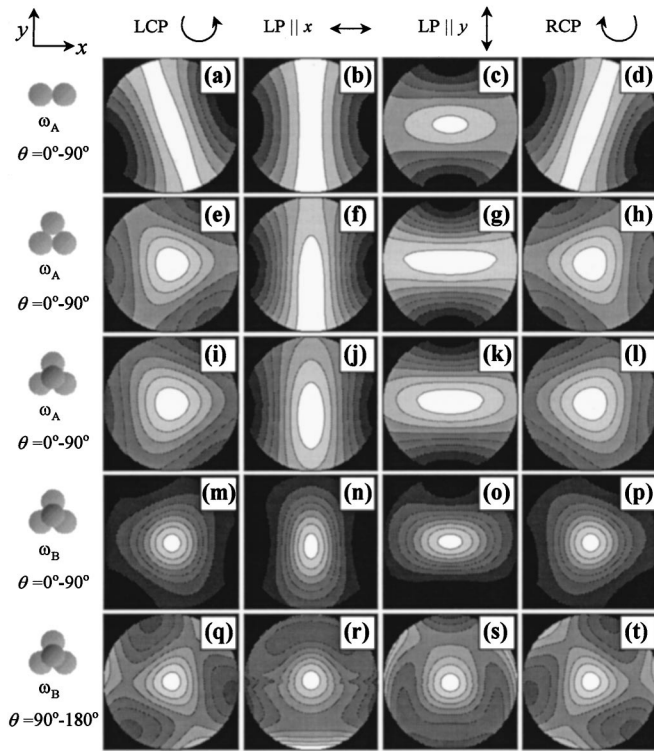


FIG. 8. Distribution of the elastic cross section [Eq. (29)] over directions of scattering for various clusters of 2–4 Al spheres of radius $a = 19$ nm whose surfaces are separated by 2 nm. Each row represents results obtained from the same cluster (see insets), with the radiation coming normal to the plane of representation from underneath (i.e., $\parallel z$). Various polarizations of the incoming light have been considered (the polarization employed in each column is indicated in the upper insets). The energy of the radiation corresponds to that of points A and B in Fig. 6(a) (i.e., $\omega_A = 5.2$ eV and $\omega_B = 8.2$ eV). (a)–(p) represent forward-scattering results (i.e., angles of scattering $\theta = 0 - 90^\circ$, with $\theta = 0$ in the center of each figure), whereas (q)–(t) correspond to backward scattering (i.e., angles of scattering $\theta = 90^\circ - 180^\circ$, with $\theta = 180^\circ$ in the center of each figure). The doubly differential cross section is given per steradian, and normalized to both the number of spheres in each case and the projected area of one sphere πa^2 . Contour curves limiting white areas correspond to values of 0.3 in (a) and (d), 0.6 in (b), 0.15 in (c), 0.4 in (e)–(p), and 0.09 in (q)–(t). Consecutive contour curves differ by a value of 0.05 in (a), (d), and (e)–(p), 0.1 in (b), 0.025 in (c), and 0.01 in (q)–(t).

represented in Fig. 8, where radiation of energy corresponding to features A and B of Fig. 6(a) has been contemplated. The figure illustrates how different polarizations of the incoming radiation lead also to very different diffraction patterns. The symmetry of the cluster is reflected in that of the far field, as one can see by comparing the two-sphere case with the rest of the clusters. However, a rotation from the directions of symmetry of the cluster is observed in the case of circularly polarized radiation. The intensity of scattered photons is maximum along the forward direction ($\theta = 0$) in all cases.

Near-field distributions (i.e., the square of the induced electric field) have been represented in Fig. 9 for isolated Al spheres and clusters formed by two and three Al spheres. The parameters of the spheres are the same as in Fig. 6. The energy of the radiation corresponds to the features marked in

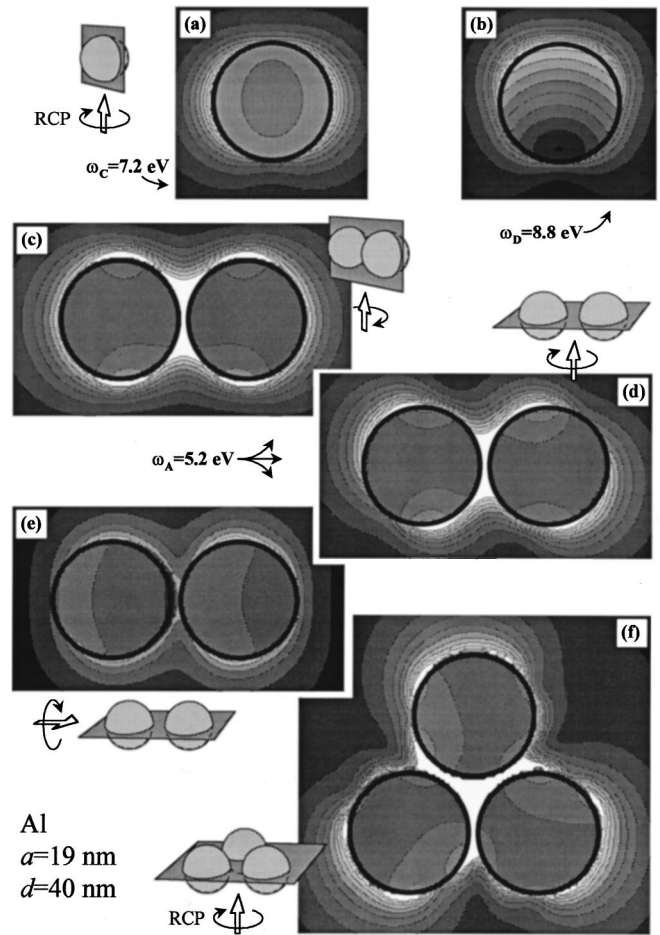


FIG. 9. Contour maps of the square of the induced-electric-field strength in the vicinity of Al spheres of radius $a = 19$ nm illuminated by RCP radiation of energy as indicated by labels [see corresponding points in Fig. 6(a)]. The cases of an isolated sphere [(a) and (b)], a two-sphere cluster with different orientations relative to the incoming radiation [(c)–(e)], and a three-sphere cluster (f) have been considered. The planes of representation are schematically shown in the insets relative to both the incoming beam direction and the position of the spheres. The sphere surfaces are represented by thick circumferences on the figures. The separation between the surfaces of the spheres is 2 nm in (c)–(f). Contour curves limiting white areas correspond to a value of 5, 5.5, 8, 8, 3.5, and 9 a.u. in (a)–(f), respectively. The difference in value between consecutive contour curves is 0.5 a.u. in all cases. The strength of the external field has been normalized to 1 a.u.

Fig. 6(a). Circularly polarized radiation has been considered. Notice that the two modes illustrated in the figure for the isolated sphere show very different distributions of induced electric field, which can be ascribed to dipole and quadrupole modes in Figs. 9(a) and 9(b), respectively. For the dimer, a large enhancement of the induced field can be observed in the region between the two spheres in Figs. 9(c) and 9(d), indicating a strong sphere-sphere interaction. The lack of specular symmetry in the plane normal to the radiation in Fig. 9(d) can be attributed to the polarization of the radiation. For the same energy but using radiation aligned with the dimer, the 5.2-eV mode does not show up in the cross section, as can be seen in Fig. 6(a), and this is translated into the very weak induced field shown in Fig. 9(e). Finally, the case of three spheres [Fig. 9(f)] shows a strong localization of the

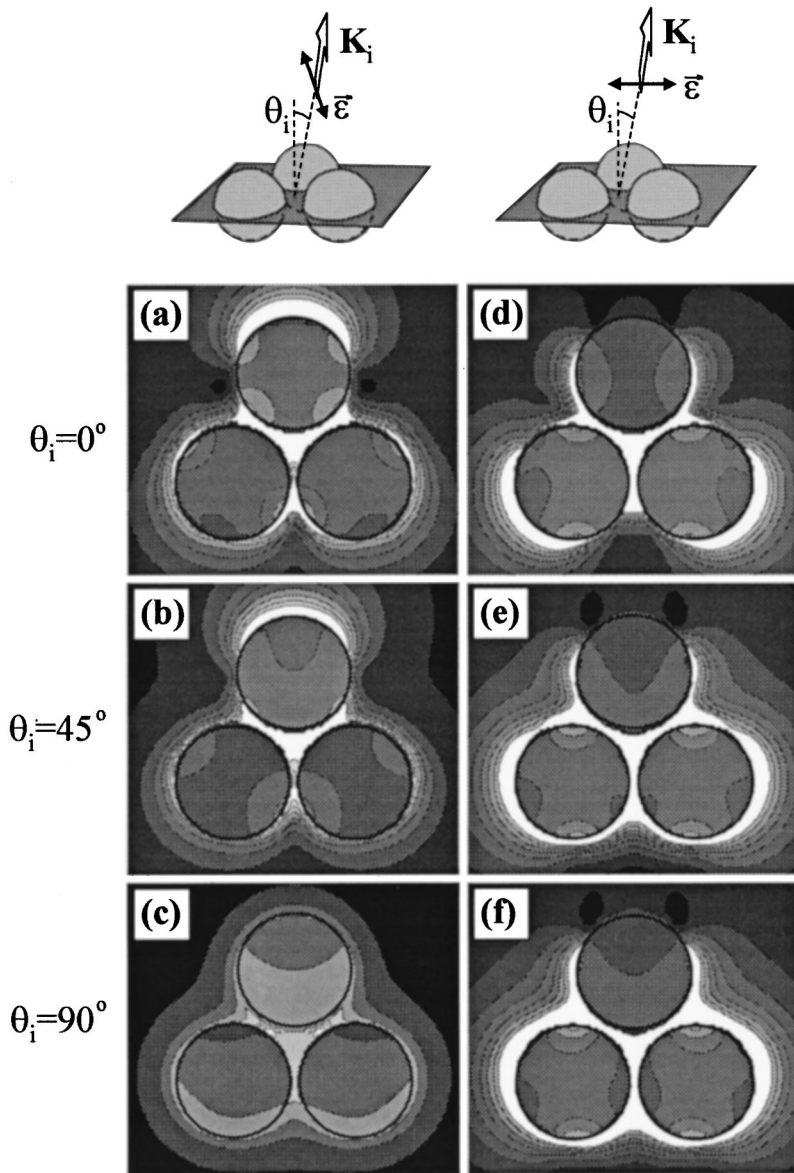


FIG. 10. Contour maps of the square of the induced-electric-field strength in the vicinity of a cluster of three Al spheres of radius $a=19$ nm illuminated by linearly polarized radiation with the polarization vector $\vec{\epsilon}$ as shown in the insets (the plots in each column are calculated using the same polarization). The energy of the radiation is $\omega_A=5.2$ eV. The plane of representation is schematically shown in the insets relative to both the incoming beam direction and the position of the spheres. The angle formed between the direction of propagation of the radiation and the normal to the plane of representation is θ_i . The sphere surfaces are represented by thick circumferences on the figures. The separation between the surfaces of the spheres is 2 nm. Contour curves limiting white areas correspond to a value of 4 a.u. The difference in value between consecutive contour curves is 0.5 a.u. in all cases. The strength of the external field has been normalized to 1 a.u.

induced field in the interstitial region between the spheres, as well as a certain asymmetry also connected to the polarization of the radiation.

The near field induced by linearly polarized light incident along different angles with respect to the normal to a triangle formed by three Al spheres of radius $a=19$ nm, like those considered in Fig. 9(f), is represented in Fig. 10. When the polarization vector is contained in the plane determined by the normal to the triangle and the direction of incidence of the radiation [*s* polarization; Figs. 10(a)–10(c)], the near field is very sensitive to the angle of incidence. For normal incidence, the polarization direction has a large projection on two of the bond vectors of the cluster, producing an intense induced electric field in those regions. For in-plane incidence, the polarization vector is normal to all bond vectors, and, as a result, the induced field is very weak. This is in qualitative agreement with the conclusions extracted from Figs. 6(b) and 9(c)–9(e), where it was shown that only the electric field component parallel to the bond vector contributes to excite a mode at the energy $\omega_A=5.2$ eV under consideration. For *p* polarization [Figs. 10(d)–10(f)] the near

field is rather insensitive to the incidence angle, and this can be attributed to the fact that the projections of the polarization vector on the bond vectors of the cluster are independent of the angle on incidence in this case. Also, the wavelength of the radiation is over 17 times larger than the sphere radius (see upper scales in Fig. 6), and, hence, phase differences in the interaction of external radiation with the spheres for various incidence angles are small.

The evolution of the induced electric field on its way out from the target is represented in Fig. 11. The near field is shown on different planes parallel to the same three-Al-sphere cluster considered above [Figs. 11(a)–11(f)], and also on concentric hemispheres centered at the cluster [Figs. 11(g)–11(j)]. The electric field evolves smoothly, forming different patterns that cannot be directly identified with the far field up to relatively large distances from the cluster. For hemispheres at distances of 150 and 200 nm, like those contemplated in Figs. 11(i) and 11(j), the induced field starts resembling the far field represented in Fig. 8(h) for the same geometry. Upon inspection of Eq. (17), one concludes that the far-field approximation is valid at distances R from the

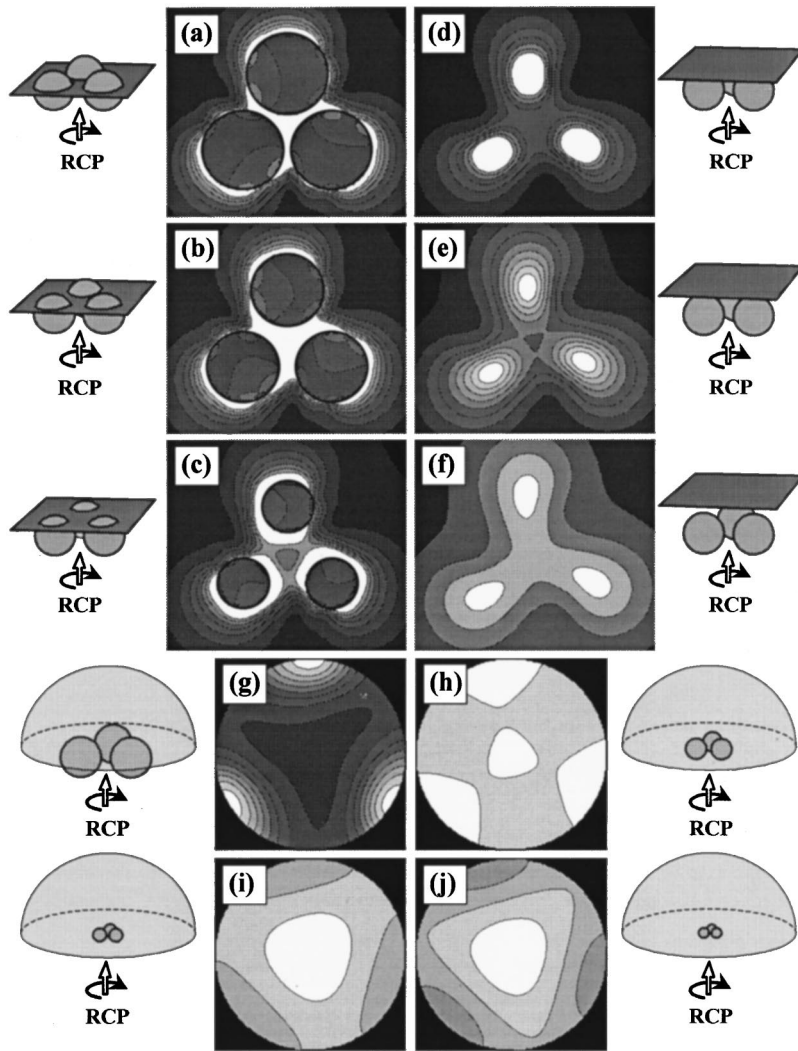


FIG. 11. Contour maps of the square of the induced-electric-field strength in the vicinity of a cluster of three Al spheres of radius $a = 19$ nm illuminated by RCP radiation. The energy of the radiation is $\omega_A = 5.2$ eV. The surfaces of representation are schematically shown in the insets relative to both the incoming beam direction and the position of the spheres. Different planes perpendicular to the direction of the radiation have been considered in (a)–(f). The distance from the planes to the centers of the spheres is 5 [+ 5] 30 nm in (a)–(f), respectively. The near field has been also represented for points lying on concentric hemispheres whose distance from the cluster center is 50 [+ 50] 200 nm in (g)–(j), respectively. In this case, the representation is based upon polar angles with respect to the forward direction determined by the center of the hemispheres, in a similar way as in Fig. 8(h). The sphere surfaces are represented by thick circumferences in (a)–(c). The separation between the surfaces of the spheres is 2 nm. Contour curves limiting white areas correspond to a value of 4 a.u. in (a)–(d), 2.2 in (e), and 1.2 in (f). The difference in value between consecutive contour curves is 0.5 a.u. in (a)–(d), and 0.2 in (e) and (f). The maximum values in (g)–(j) are 2.5, 0.36, 0.24, and 0.19 a.u., respectively. The strength of the external field has been normalized to 1 a.u.

cluster much larger than the cluster size and such that $k_0 R \ll \sqrt{l_{\max}}$. In the present case, this condition becomes $R \ll 125$ nm.

The maxima of the induced electric field are located just outside the spheres in the case of Al (see Figs. 9–11), whereas for SiO₂ the induced field is larger inside the spheres (see Fig. 5). This is related to the fact that the wave equation (2), which rules the propagation of free scalar functions in Al (SiO₂), is the same as the Schrödinger equation for free electrons moving in an repulsive (attractive) potential, since the real part of the dielectric constant is negative (positive) for the radiation energies under consideration.

Single-scattering (ss) results have been compared with full multiple elastic scattering of multipole expansions (MESME) in Fig. 12 for four-Al-sphere clusters of different sizes. Multiple scattering effects are shown to be important, and they lead to dramatic modifications in the cross section. When the dimensions of the cluster are increased by scaling its geometrical parameters, a general shift of the maxima in the cross sections toward lower energies is observed as a result of retardation effects similar to those discussed above for SiO₂ spheres.

A larger target has been considered in Fig. 13, where the effect of multiple scattering of external radiation has been

studied for a cluster of 60 spheres with the same structure as carbons in a C₆₀ molecule. For SiO₂ spheres [Fig. 13(a)], the total scattering cross section (solid curves), as calculated from Eq. (30), follows quite closely the elastic-scattering cross section (dashed curves) in the region below ≈ 8.5 eV, where SiO₂ is transparent and absorption is negligible. For Al spheres [Fig. 13(b)], both cross sections are relatively featureless. The cross section of the Al cluster lies below the result of single scattering (dotted curves, representing 60 times the total cross section of an isolated sphere) in most of the energy range under consideration. In silica, the prominent feature obtained for single scattering at around 9 eV is converted into a dip when multiple scattering is switched on.

The case of Si spheres coated with SiO₂ has been illustrated in Fig. 14. Isolated spheres of radius $a = 20$ nm have been considered in Fig. 14(a) for different radii of the inner Si core, b . A prominent feature dominates the spectrum for the case of pure Si (i.e., $b = a$). The exciton of SiO₂ shows up at around 10.5 eV when the sphere is coated, and it remains as a dominant feature for the case of pure SiO₂. For three touching spheres, multiple scattering is observed to play a significant role when the coating layer is thin. Notice that a coating layer of just 2 nm of SiO₂ is able to produce sizable variations in the cross section. A shift of the modes

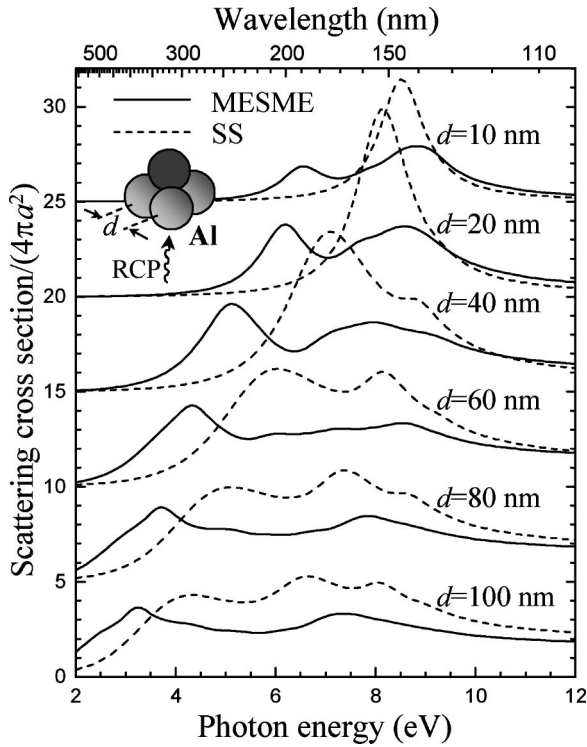


FIG. 12. Total scattering cross section for RCP radiation incident on tetrahedral clusters of Al spheres of various sizes. Single scattering results (ss; dashed curves) and full multiple-scattering results (MESME; solid curves) are shown for clusters of spheres of radius $a=0.475d$, whose centers are separated a distance d (see labels). The radiation is coming along a direction perpendicular to one of the faces of the tetrahedron, as shown in the inset. The cross section has been normalized to both the number of spheres and the projected area of one sphere πa^2 . Consecutive curves have been shifted a value of 5 upwards to improve readability.

toward lower frequencies is observed here again when multiple scattering is switched on.

Metallic spheres of frequency-independent negative dielectric function are contemplated in Fig. 15. For nonmagnetic isolated spheres [Fig. 15(a)], a general trend toward lower energies is observed in the features of the cross-section spectrum when the magnitude of the dielectric constant increases. Also, the cross section increases in magnitude in the same direction, and this is consistent with the fact that negative dielectric functions act like repulsive potentials for light, so that, the larger the magnitude of ϵ , the stronger the interaction. For a cluster of three nonmagnetic spheres [Fig. 15(b)], multiple-scattering effects are important and they are enhanced when the magnitude of the dielectric function increases (notice in particular the dramatic change that occurs when ϵ goes from -20 to -40).

Finally, the lower part of Fig. 15 is devoted to studying magnetic spheres as a function of the magnetic permeability for $\epsilon = -10$. The attenuation of the electric field inside the spheres increases with μ following the exponential law $\exp(-r\sqrt{-\epsilon\mu})$, so that μ and $|\epsilon|$ play a similar role in this respect. Actually, the modes of both isolated spheres [Fig. 15(c)] and three-sphere clusters [Fig. 15(d)] are also shifted toward lower energies when the permeability μ increases.

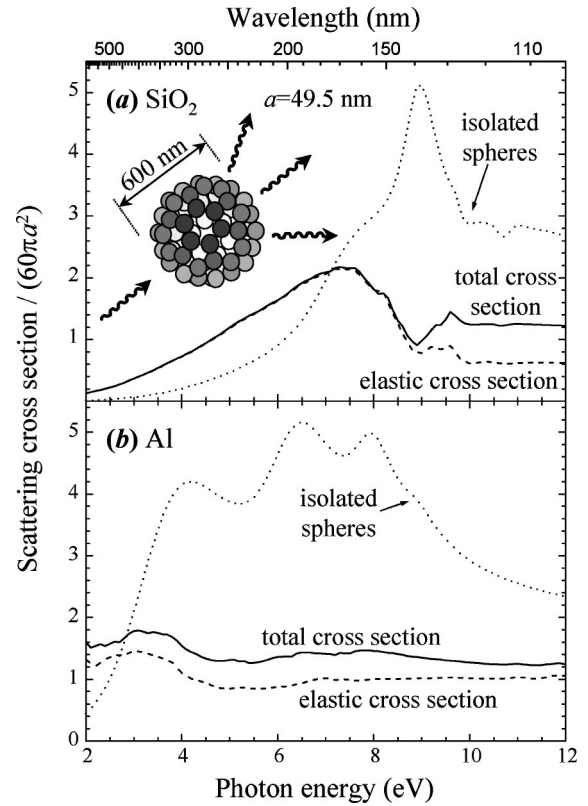


FIG. 13. (a) Radiation scattering cross section for a cluster formed by 60 SiO_2 spheres with the same structure as carbons in a C_{60} molecule. The radius of the spheres is 49.5 nm. The nearest-neighbor bond distance is 100 nm. The elastic cross section [dashed curve; integral of Eq. (29)] is compared with the total cross section [solid curve; Eq. (30)], and 60 times the total cross section of an isolated sphere (dotted curve). (b) The same as (a) for Al spheres.

VI. CONCLUDING REMARKS

In summary, a general, computationally efficient technique has been presented for solving Maxwell's equations in a cluster of arbitrarily disposed dielectric objects. This method permits one to express the solution of Maxwell's equations in terms of the scattering properties of the constituents of the cluster. The computation time scales with the square of the number of elements of the cluster.

The generality of this method relies on the fact that there is no restriction on the shape or internal structure of the constituents of the clusters under consideration, apart from the condition imposed by the translation formula of spherical harmonics [see Eq. (10)], which requires that the objects of the cluster can be embedded inside nonoverlapping spheres. Work to overcome this restriction is in progress.

The present formalism has been applied to the study of scattering of radiation and different examples of simulation for clusters formed by spheres have been offered, including clusters of magnetic spheres and coated spheres. The effect of multiple scattering of radiation is dramatic in some of the clusters under consideration. In general, metallic clusters are able to produce larger multiple scattering effects than clusters formed by insulators.

Near-field distributions have been presented for various clusters. Notice that there is a connection between the elec-

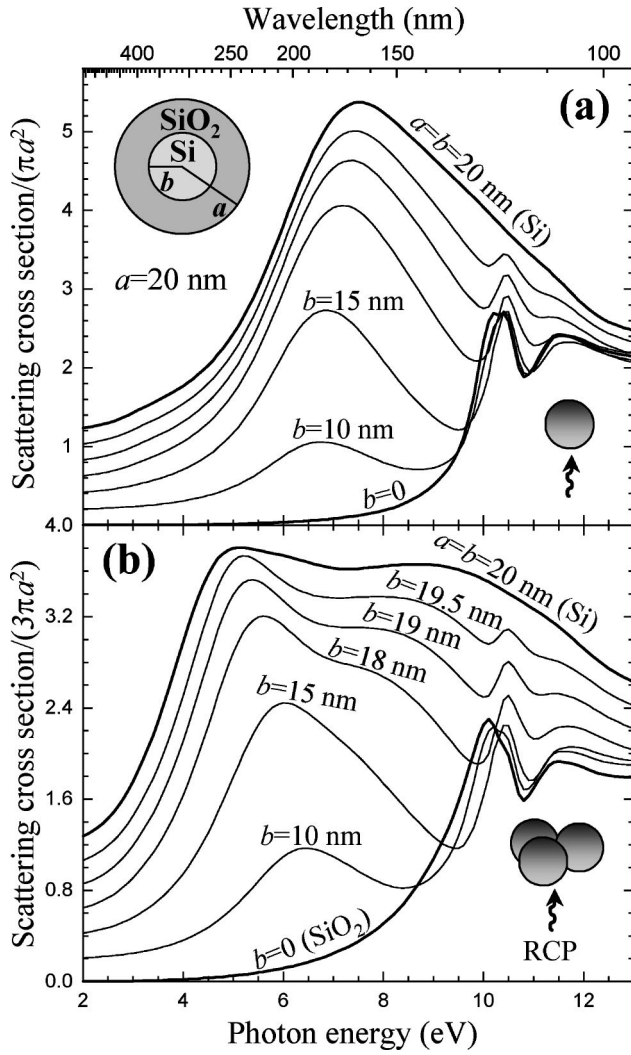


FIG. 14. Total scattering cross section for RCP radiation incident on both (a) an isolated Si sphere coated with SiO_2 and (b) a cluster of three touching spheres. The sphere radius is $a = 20$ nm in all cases and the radius of the Si core b is changed as shown by labels. In (b), the radiation is coming normal to the plane defined by the sphere centers. The cross section has been normalized to the projected area of one and three spheres in (a) and (b), respectively. Consecutive curves have been shifted 0.2 upwards to improve readability.

tric field induced at a position near a cluster illuminated by an external plane wave incident along a certain direction, and the radiation emitted along that direction due to a localized source at the position under consideration.¹³ This reciprocity theorem permits us to extract conclusions on the information contained in SNOM images by analyzing the near field induced in the cluster by external radiation. In this sense, the method presented here can be applied to the analysis of SNOM in complex geometries.

The present theory can deal with different external sources. For instance, if the external field is provided by a fast electron, the induced field acting back on the electron can be used to simulate electron energy losses in scanning transmission electron microscopes.

Finally, an interesting possibility is offered by the extension of quasicrystals^{56,57} to their photonic counterpart, where large clusters of dielectrics would be distributed to form a

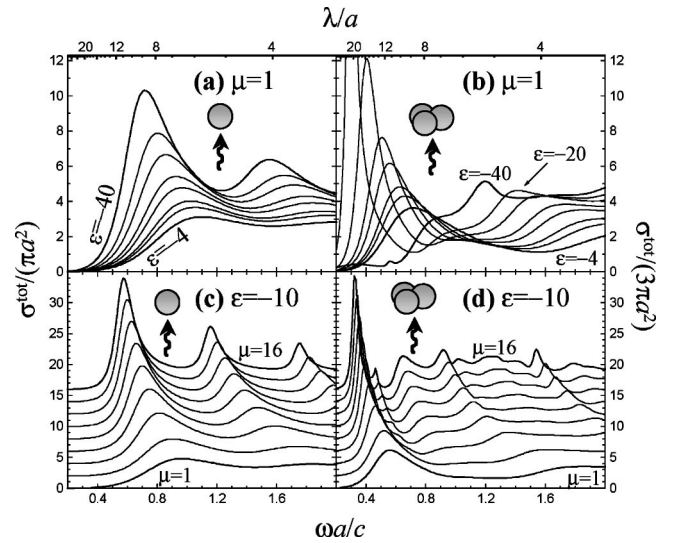


FIG. 15. Total scattering cross section for RCP radiation incident on both an isolated sphere [(a) and (c)] and a cluster of three identical spheres along the direction normal to the plane of the sphere centers [(b) and (d)], as a function of frequency ω . Nonmagnetic spheres ($\mu = 1$) have been considered in (a) and (b) with different values of the dielectric constant ($\epsilon = -4, -5, -6, -8, -10, -15, -20$, and -40). Results for magnetic spheres are shown in (c) and (d) for $\epsilon = -10$ in all cases and different values of the magnetic permeability ($\mu = 1, 2, 4, 6, 8, 10, 12, 14$, and 16). The results have been normalized to the projected area of either one sphere or three spheres, in each case. The separation between the surfaces of the spheres is $a/10$ in the three-sphere cluster, where a is the sphere radius. The wavelength of the radiation $\lambda = 2\pi c/\omega$ is given on the upper scale, normalized to a . Consecutive curves have been shifted 0.2 upwards to improve readability in (c) and (d).

nonperiodic structure able to reflect light forming fivefold symmetry patterns. Well-defined electronic bands are observed in quasicrystals.⁵⁶ Similarly, photonic band gaps have been predicted in two-dimensional photonic quasicrystals,⁵⁸ and one would expect similar results in three-dimensional photonic structures, where cluster models like the one developed here are ideal to study local properties.

ACKNOWLEDGMENTS

The author wants to thank M. A. Van Hove and C. S. Fadley for their kind hospitality during his stay in Berkeley, and A. Howie and P. M. Echenique for helpful and enjoyable discussions. Help and support from the University of the Basque Country and the Spanish Ministerio de Educación y Cultura, under Fulbright Grant No. FU-98-22726216, is gratefully acknowledged. Part of this work was supported by the U.S. Department of Energy under Contract No. DE-AC03-76SF00098.

APPENDIX: TRANSLATION OF THE ORIGIN OF ELECTROMAGNETIC MULTIPOLES

This appendix is devoted to deriving Eq. (15), which represents the explicit form of the transformation rule of multipole coefficients of scalar functions under translations of the origin of multipoles from \mathbf{r}_β to \mathbf{r}_α along the vector $\mathbf{d}_{\alpha\beta} = \mathbf{r}_\alpha - \mathbf{r}_\beta$, when the latter is directed along the positive z

axis. This can be accomplished by projecting Eqs. (13) and (14) onto multipole components, noticing that each multipole under consideration is actually a spherical plane wave j_L [see comments immediately after Eq. (6) and those at the end of Sec. II C]. In particular, the δ function in Eq. (15) comes from the first term on the right-hand side of Eqs. (13) and (14). Moreover, the last term in these equations can be projected using the identity

$$\frac{1}{L_\alpha^2} \mathbf{d}_{\alpha\beta} \cdot \mathbf{L}_\alpha j_L(\mathbf{u}_\alpha) = \frac{m d_{\alpha\beta}}{l(l+1)} j_L(\mathbf{u}_\alpha), \quad (\text{A1})$$

where $\mathbf{u}_\alpha = k_0(\mathbf{r} - \mathbf{r}_\alpha)$, $L = (l, m)$, and the substitution $(1/L_\alpha^2) j_L \rightarrow j_L / l(l+1)$ has been performed. This gives rise to crossed electric-magnetic terms in Eq. (15).

The remaining second term requires a more careful analysis. One can proceed by considering the operator

$$\hat{z} \cdot (\mathbf{L}_\alpha \times \nabla) = i \left[(z - z_\alpha) \nabla^2 - \frac{1}{k_0} (\mathbf{u}_\alpha \cdot \nabla) \partial_z \right]. \quad (\text{A2})$$

Using the identity $\nabla^2 j_L = -k_0^2 j_L$ [see Eq. (2) and notice that the medium filling the interstitial region between objects of the cluster corresponds to $j=0$], Eq. (A2) leads to

$$\begin{aligned} \hat{z} \cdot (\mathbf{L}_\alpha \times \nabla) j_L(\mathbf{u}_\alpha) = & -i^{l+1} k_0 \left\{ u_\alpha [j_l(u_\alpha) + j_l''(u_\alpha)] \mu Y_L(\widehat{\mathbf{u}}_\alpha) \right. \\ & + \left[j_l'(u_\alpha) - \frac{j_l(u_\alpha)}{u_\alpha} \right] \\ & \left. \times (1 - \mu^2) \partial_\mu Y_L(\widehat{\mathbf{u}}_\alpha) \right\}, \end{aligned}$$

where $\mu = (z - z_\alpha) / |\mathbf{r} - \mathbf{r}_\alpha|$. Now, expressing μY_L and $(1 - \mu^2) \partial_\mu Y_L$ in terms of $Y_{l+1,m}$ and $Y_{l-1,m}$ (see for instance the appendices of Messiah⁴⁶) and using the recurrence relations of the spherical Bessel functions j_l , one finds

$$\begin{aligned} \frac{\mathbf{d}_{\alpha\beta}}{L_\alpha^2} \cdot (\mathbf{L}_\alpha \times \nabla) j_L(u_\alpha) = & i k_0 d_{\alpha\beta} \{ D_{l+1,m} j_{l+1,m}[u_\alpha] \\ & - D_L j_{l-1,m}[u_\alpha] \}, \quad (\text{A3}) \end{aligned}$$

where D_L is defined by Eq. (16). Finally, using Eqs. (A1) and (A3) in the multipole expansion of Eqs. (13) and (14), and rearranging the summation index l , one obtains Eq. (15).

- *Permanent address: Departamento de CCIA (Facultad de Informática), Donostia International Physics Center (DIPC), and Centro Mixto CSIC-UPV/EHU, San Sebastián, Spain.
- ¹J. D. Joannopoulos, R. D. Meade, and J. N. Winn, *Photonic Crystals: Molding the Flow of Light* (Princeton University Press, Singapore, 1995).
 - ²T. W. Ebbesen, H. J. Lezec, H. F. Ghaemi, T. Thio, and P. A. Wolff, *Nature (London)* **391**, 667 (1998).
 - ³Y. Fink, J. N. Winn, S. Fan, C. Chen, J. Michel, J. D. Joannopoulos, and E. L. Thomas, *Science* **282**, 1679 (1998).
 - ⁴K. Ohtaka, *Phys. Rev. B* **19**, 5057 (1979).
 - ⁵K. Ohtaka and M. Inoue, *Phys. Rev. B* **25**, 677 (1982).
 - ⁶P. Giannozzi, G. Grosso, and G. P. Parravicini, *Phys. Rev. B* **34**, 2952 (1986).
 - ⁷K. M. Leung and Y. F. Liu, *Phys. Rev. Lett.* **65**, 2646 (1990).
 - ⁸Z. Zhang and S. Satpathy, *Phys. Rev. Lett.* **65**, 2650 (1990).
 - ⁹E. Yablonovitch, T. L. Gmitter, and K. M. Leung, *Phys. Rev. Lett.* **67**, 2295 (1991).
 - ¹⁰E. Yablonovitch, T. L. Gmitter, R. D. Meade, A. M. Rappe, K. D. Brommer, and J. D. Joannopoulos, *Phys. Rev. Lett.* **67**, 3380 (1991).
 - ¹¹J. B. Pendry and A. MacKinnon, *Phys. Rev. Lett.* **69**, 2772 (1992).
 - ¹²J. D. Joannopoulos, P. R. Villeneuve, and S. Fan, *Nature (London)* **386**, 143 (1997).
 - ¹³H. Miyazaki and K. Ohtaka, *Phys. Rev. B* **58**, 6920 (1998).
 - ¹⁴J. B. Pendry and L. Martín-Moreno, *Phys. Rev. B* **50**, 5062 (1994).
 - ¹⁵J. S. Foresi, P. R. Villeneuve, J. Ferrera, E. R. Thoen, G. Steinmeyer, S. Fan, J. D. Joannopoulos, L. C. Kimerling, H. I. Smith, and E. P. Ippen, *Nature (London)* **390**, 143 (1997).
 - ¹⁶M. Bayer, T. Gutbrod, J. P. Reithmaier, A. Forchel, T. L. Reinecke, P. A. Knipp, A. A. Dremin, and V. D. Kulakovskii, *Phys. Rev. Lett.* **81**, 2582 (1998).

- ¹⁷J. M. Gérard, B. Sermage, B. Gayral, B. Legrand, E. Costard, and V. Thierry-Mieg, *Phys. Rev. Lett.* **81**, 1110 (1998).
- ¹⁸H. G. Berry, D. S. Gemmell, R. E. Holland, J.-C. Poizat, J. Remillieux, and J. N. Worthington, *Phys. Rev. Lett.* **67**, 3796 (1991).
- ¹⁹M. A. Paesler and P. J. Moyer, *Near-Field Optics: Theory, Instrumentation, and Applications* (Wiley, New York, 1996).
- ²⁰T. Klar, M. Perner, S. Grosse, G. von Plessen, W. Spirkl, and J. Feldmann, *Phys. Rev. Lett.* **80**, 4249 (1998).
- ²¹A. Howie and R. H. Milne, *Ultramicroscopy* **18**, 427 (1985).
- ²²R. H. Ritchie, *Phys. Rev.* **106**, 874 (1957).
- ²³T. L. Ferrell and P. M. Echenique, *Phys. Rev. Lett.* **55**, 1526 (1985).
- ²⁴A. Rivacoba, N. Zabala, and P. M. Echenique, *Phys. Rev. Lett.* **69**, 3362 (1992).
- ²⁵E. Kröger, *Z. Phys. A* **235**, 403 (1970).
- ²⁶N. Zabala, A. Rivacoba, and P. M. Echenique, *Surf. Sci.* **209**, 465 (1989).
- ²⁷F. J. García de Abajo, *Phys. Rev. B* **59**, 3095 (1999).
- ²⁸N. Ida, *Numerical Modeling for Electromagnetic Non-Destructive Evaluation* (Chapman and Hall, New York, 1995).
- ²⁹F. J. García de Abajo and A. Howie, *Phys. Rev. Lett.* **80**, 5180 (1998).
- ³⁰W. Lamb, D. M. Wood, and N. W. Ashcroft, *Phys. Rev. B* **21**, 2248 (1980).
- ³¹L. Fu, P. B. Macedo, and L. Resca, *Phys. Rev. B* **47**, 13 818 (1993).
- ³²L. Fu and L. Resca, *Phys. Rev. B* **47**, 16 194 (1993).
- ³³R. G. Barrera and R. Fuchs, *Phys. Rev. B* **52**, 3256 (1995).
- ³⁴C. I. Mendoza, R. G. Barrera, and R. Fuchs, *Phys. Rev. B* **57**, 11 193 (1998).
- ³⁵F. J. García de Abajo, *Phys. Rev. Lett.* **82**, 2776 (1999).
- ³⁶M. Danos and L. C. Maximon, *J. Math. Phys.* **6**, 766 (1965).
- ³⁷R. Nozawa, *Nucl. Instrum. Methods Phys. Res. B* **100**, 1 (1966).

- ³⁸J. B. Pendry, *Low Energy Electron Diffraction* (Academic Press, London, 1974).
- ³⁹J. J. Rehr and R. C. Albers, Phys. Rev. B **41**, 8139 (1990).
- ⁴⁰V. Fritzsche, J. Phys.: Condens. Matter **2**, 1413 (1990).
- ⁴¹V. Fritzsche, J. Phys.: Condens. Matter **2**, 9735 (1990).
- ⁴²A. P. Kaduwela, D. J. Friedman, and C. S. Fadley, J. Electron Spectrosc. Relat. Phenom. **57**, 223 (1991).
- ⁴³K. Ohtaka, T. Ueta, and K. Amemiya, Phys. Rev. B **57**, 2550 (1998).
- ⁴⁴L. M. Li and Z. Q. Zhang, Phys. Rev. B **58**, 9587 (1998).
- ⁴⁵F. E. Low, *Classical Field Theory: Electromagnetism and Gravitation* (Wiley, New York, 1997).
- ⁴⁶See appendices of A. Messiah, *Quantum Mechanics* (North-Holland, New York, 1966) for the notation.
- ⁴⁷J. A. Stratton, *Electromagnetic Theory* (McGraw-Hill, New York, 1941).
- ⁴⁸L. Fu and L. Resca, Phys. Rev. B **52**, 10 815 (1995).
- ⁴⁹The vector identities $\mathbf{L} \cdot (\nabla \times \mathbf{L}) = (\mathbf{L} \times \nabla) \cdot \mathbf{L} = 0$, $(\mathbf{L} \times \nabla) \cdot (\nabla \times \mathbf{L}) = -\nabla^2 L^2$, $\mathbf{L} \cdot (\mathbf{d} \times \nabla) = -(\mathbf{L} \times \nabla) \cdot \mathbf{d}$, $(\mathbf{L} \times \nabla) \cdot (\mathbf{d} \times \nabla) = \mathbf{L} \cdot [\nabla \times (\mathbf{d} \times \nabla)] = (\mathbf{L} \cdot \mathbf{d}) \nabla^2$, and $(\mathbf{L} \times \nabla) \cdot [\nabla \times (\mathbf{d} \times \nabla)] = [(\mathbf{L} \times \nabla) \cdot \mathbf{d}] \nabla^2$ have been used.
- ⁵⁰V. Heine, Solid State Phys. **35**, 1 (1980).
- ⁵¹R. Haydock, Solid State Phys. **35**, 215 (1980).
- ⁵²J. D. Jackson, *Classical Electrodynamics* (Wiley, New York, 1975).
- ⁵³This comes from the fact that the radiated electric field has to be perpendicular to the direction of emission. Also, this can be seen from Eq. (27), where $\vec{\zeta}_L(\Omega) = \mathbf{L} Y_L(\Omega)$ and the second term inside the square brackets vanishes immediately upon multiplication by \mathbf{r} .
- ⁵⁴E. D. Palik, *Handbook of Optical Constants of Solids* (Academic Press, New York, 1985).
- ⁵⁵Similar effects of forward scattering have been discussed in a different context within photoelectron diffraction. See, for instance, C. S. Fadley *et al.*, J. Surf. Anal. **3**, 334 (1997), and references therein.
- ⁵⁶X. Wu, S. W. Kycia, C. G. Olson, P. J. Benning, A. I. Goldman, and D. W. Lynch, Phys. Rev. Lett. **75**, 4540 (1995).
- ⁵⁷P. J. Steinhardt *et al.*, Nature (London) **396**, 55 (1998).
- ⁵⁸Y. S. Chan, C. T. Chan, and Z. Y. Liu, Phys. Rev. Lett. **80**, 956 (1998).