



Charge order evolution of superconducting BaNi_2As_2 under high pressure

John Collini,¹ Daniel J. Campbell,^{1,2} Daniel Sneed ,² Prathum Saraf,¹ Christopher Eckberg,¹ Jason Jeffries,² Nicholas Butch,^{1,3} and Johnpierre Paglione ^{1,4,*}

¹Maryland Quantum Materials Center, Department of Physics, University of Maryland, College Park, Maryland 20742, USA

²Lawrence Livermore National Laboratory, Livermore, California 94550, USA

³NIST Center for Neutron Research, National Institute of Standards and Technology, Gaithersburg, Maryland 20899, USA

⁴Canadian Institute for Advanced Research, Toronto, Ontario M5G 1Z8, Canada



(Received 5 June 2023; accepted 18 October 2023; published 2 November 2023)

BaNi_2As_2 , a nonmagnetic superconductor counterpart to BaFe_2As_2 , has been shown to develop nematic order, multiple charge orders, and a dramatic sixfold enhancement of superconductivity via isovalent chemical substitution of Sr for Ba. Here we present high-pressure single-crystal and powder x-ray diffraction measurements of BaNi_2As_2 to study the effects of tuning lattice density on the evolution of charge order in this system. Single-crystal x-ray experiments track the evolution of the incommensurate ($Q = 0.28$) and commensurate ($Q = 0.33$ and $Q = 0.5$) charge orders, and the tetragonal-triclinic distortion as a function of temperature up to pressures of 10.4 GPa, and powder-diffraction experiments at 300 K provide lattice parameters up to 17 GPa. We find that applying pressure to BaNi_2As_2 produces a similar evolution of structural and charge-ordered phases as found as a function of chemical pressure in $\text{Ba}_{1-x}\text{Sr}_x\text{Ni}_2\text{As}_2$, with coexisting commensurate charge orders appearing on increasing pressure. These phases also exhibit a similar abrupt cutoff at a critical pressure of (9 ± 0.5) GPa, where powder-diffraction experiments indicate a collapse of the tetragonal structure at higher temperatures. We discuss the relationship between this collapsed tetragonal phase and the discontinuous phase boundary observed at the optimal substitution value for superconductivity in $\text{Ba}_{1-x}\text{Sr}_x\text{Ni}_2\text{As}_2$.

DOI: [10.1103/PhysRevB.108.205103](https://doi.org/10.1103/PhysRevB.108.205103)

I. INTRODUCTION

Understanding the role of competing ground states in unconventional superconductors remains an important unresolved problem in quantum materials. In the cuprate [1–9] and iron-pnictide [10–14] superconducting families, antiferromagnetic fluctuations are thought to drive high-temperature superconductivity, but coexisting and competing structural, charge, and electronic nematic ordered phases have complicated any simple interpretation of the origin of high critical temperatures found in both systems. To explore the effectiveness of the other contributing phases in these systems, attention has turned towards studying related systems that show superconductive enhancement without a strong magnetic component. The nickel-based pnictide family, including BaNi_2As_2 and related compounds, has come into focus as an ideal platform for such investigations [15–22].

BaNi_2As_2 is considered a conventional fully gapped superconductor with a transition temperature T_c of 0.7 K, based on thermal conductivity measurements in the superconducting phase [23]. However, alkali earth substitution in the $\text{Ba}_{1-x}\text{Sr}_x\text{Ni}_2\text{As}_2$ series has recently been shown to reveal a rich phase diagram with coexisting superconducting, nematic, charge, and structural orders [16], with provocative similarities to the other high-temperature superconductor families. BaNi_2As_2 is tetragonal and isostructural to its iron-based counterpart, BaFe_2As_2 , at room temperature and ambient pressure. However, while BaFe_2As_2 undergoes a mild

orthorhombic distortion at 140 K [24], BaNi_2As_2 experiences a more severe first-order transition to a lower-symmetry triclinic structure at $T_s = 135$ K [25]. The tetragonal and triclinic phases of BaNi_2As_2 are characterized by distinct sets of Bragg peaks indexed to the space groups of $I4/mmm$ and $P1$, respectively. Here we use $(H, K, L)_{\text{tet}}$ and $(H, K, L)_{\text{tri}}$ separately to describe positions in momentum space for each phase. Further, unlike BaFe_2As_2 , neutron measurements of BaNi_2As_2 have shown no evidence of magnetic order in the low-temperature triclinic phase or anywhere else at ambient pressure [25]. In this paper, we apply pressure to study the evolution of structural and charge-ordered phases in BaNi_2As_2 , comparing to those tuned by chemical pressure in $\text{Ba}_{1-x}\text{Sr}_x\text{Ni}_2\text{As}_2$, to better understand the role of lattice density and structural bonding in stabilizing the rich phase diagram of the BaNi_2As_2 system.

Recent x-ray diffraction experiments on the $\text{Ba}_{1-x}\text{Sr}_x\text{Ni}_2\text{As}_2$ series have revealed the presence of several charge-ordered phases at ambient pressure and low temperatures. In BaNi_2As_2 , a bidirectional incommensurate charge density wave (IC-CDW) develops in the tetragonal phase just above T_s at $T_{\text{IC}} = 148$ K and at a wave vector of $Q_{\text{tet}} = (0.28, 0.28, 0)_{\text{tet}}$ in a $4Q$ state in the ab plane [18]. At T_s , the incommensurate CDW vanishes and gives way to a commensurate CDW (C-CDW1) at wave vector $Q_{\text{tri}} = (0.33, 0, 0)_{\text{tri}}$ in the triclinic phase [17]. As a function of Sr substitution (x), the IC-CDW onset falls closer in temperature to the triclinic onset before disappearing near $x = 0.6$ [15]. Additionally, near $x = 0.4$, a new commensurate charge order, C-CDW2, begins to form about 20 K below the triclinic distortion at $Q_{\text{tri}} = (0.5, 0, 0)_{\text{tri}}$, coexisting with the

*paglione@umd.edu

previously mentioned C-CDW1 down to base temperature with C-CDW2 being largely dominant in scattering intensity [18]. C-CDW2 eventually replaces C-CDW1 near $x = 0.6$. At $x = 0.71$, the triclinic and C-CDW2 phases abruptly vanish, leaving only the tetragonal phase to exist down to base temperature up to $x = 1$ [18]. Concurrently at the optimal Sr concentration of $x = 0.71$, T_c experiences a large sixfold enhancement up to a maximum of 3.5 K [16].

Elastoresistance measurements of the B_{1g} channel in $\text{Ba}_{1-x}\text{Sr}_x\text{Ni}_2\text{As}_2$, corresponding to the symmetry-breaking strain along the [100] and [010] tetragonal crystallographic directions, have revealed large nematic susceptibilities and a nematic ordered phase that persists through a wide range of Sr substitution at temperatures above the triclinic distortion [16]. At lower Sr concentrations, the nematic order coexists with, and correlates strongly with, the IC-CDW intensity and crystallographic direction [16,18]. For $x = 0.65$ and higher, the IC-CDW and nematic ordered phases both vanish [15], revealing an enhanced superconducting phase along with a strong nematic susceptibility above it [16]. While the mechanism of CDW formation in this system is not completely understood [26,27], the correlations in intensity and coexistence for the IC-CDW and nematic phase suggest that the two phases are intimately related. With such sensitivity to nominally isovalent substitution, natural questions arise over the role of lattice density versus the impact of chemical substitution on the ordered phases in this system, and whether the evolution of these phases progresses differently for each tuning parameter.

II. METHODS

Single crystal x-ray diffraction measurements under high pressure were taken at the 16-BMD beamline of the Advanced Photon Source (APS) at Argonne National Laboratory (Fig. 1). Single crystals of BaNi_2As_2 were synthesized and characterized as part of a previous study [16], and for this study prepared in collaboration with the Equilibrium Physics at Extreme Conditions group of Lawrence Livermore National Laboratory using a diamond anvil cell (DAC) with a diamond culet size of 500 μm . The samples of BaNi_2As_2 were mounted with their c axis normal to the diamond's culet, parallel to the x-ray beam. Neon gas was used as a pressure medium and ruby fluorescence was used as a pressure manometer [28]. A 200- μm -diameter hole was drilled in the center of a stainless steel gasket. The gasket hole was filled with the sample, gas, and ruby, and closed at an initial pressure of 2.4 GPa. A beamline mounted cryostat controlled the temperature of the DAC and had working base temperature of about 37 K. A gas membrane was used to control the pressure remotely from outside cryostat and the hutch. The workable rocking angle for the experiment (denoted Omega on 16-BMD) was limited by the gasket hole to a range of -4.5° to 4.5° . Data were taken only on cooling for pressures 2.4 GPa, 5.4 GPa, 8.1 GPa, 9.5 GPa, and 10.5 GPa. Additionally, room temperature powder x-ray diffraction measurements were taken at beamline 16-IDB of the APS. A rhenium gasket was indented to about 40 μm using 300 μm culets, then a 100 μm hole was drilled in the center. A powder of crushed BaNi_2As_2 crystals was loaded along with Cu powder and a ruby sphere. The ruby was

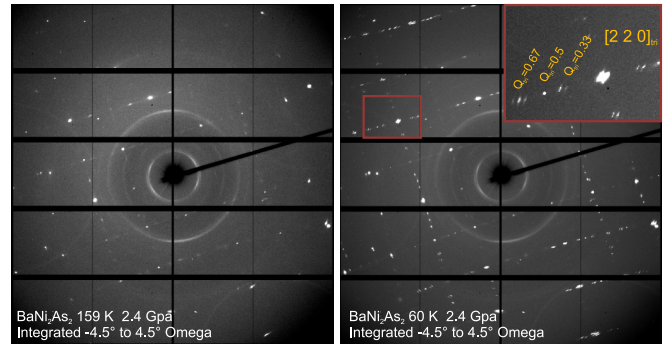


FIG. 1. Single crystal x-ray diffraction images of BaNi_2As_2 at 2.4 GPa taken at (a) 159 K and (b) 60 K. Highlighted in (b) is the $[220]_{\text{tet}}$ zone. Comparing high to low temperatures, we find the introduction of satellite peaks throughout the diffraction pattern. Superlattice peaks found midway between zones are evidence for the $Q = 0.5$ C-CDW2 and superlattice peaks found at $1/3$ and $2/3$ of the way to the next zone are evidence for the $Q = 0.33$ C-CDW1. Each image was exposed while continuously rocking the sample from -4.5° to $+4.5^\circ$ omega.

used for initial offline pressure calibration [29] and pressure during the measurement was ultimately determined from the [200] reflection of Cu using the equation of state [30]. Mineral oil was used as the pressure medium, and a gas membrane was used to control pressure remotely from outside the hutch. High-pressure electrical transport measurements were also performed up to 2.55 GPa using a piston-operated BeCu high-pressure cell with Arcros Organics Perfluoro-compound FC-770 acting as the pressure medium.

III. RESULTS AND DISCUSSION

We find that charge order under pressure in BaNi_2As_2 develops in similar ways to Sr substitution, but with key notable differences. Starting at 2.4 GPa, we observe all three charge orders (C-CDW1, C-CDW2, and IC-CDW) and the triclinic distortion seen previously in the $\text{Ba}_{1-x}\text{Sr}_x\text{Ni}_2\text{As}_2$ series (Fig. 2). We find the IC-CDW onsets at 140 K, which is 20 K above the triclinic distortion observed at 120 K at this pressure. The IC-CDW then vanishes at 105 K in the triclinic phase. This marks a different behavior from $\text{Ba}_{1-x}\text{Sr}_x\text{Ni}_2\text{As}_2$, where we would instead expect the IC-CDW to vanish very close to the triclinic onset while still in the tetragonal phase [18]. For the commensurate charge order, C-CDW1 appears first at 110 K and C-CDW2 appears next at 105 K, both in the triclinic phase. C-CDW1 and C-CDW2 continue to coexist down to 60 K, the lowest temperature we measured for this pressure. This behavior, with the exception of a wide IC-CDW existence window in temperature, places BaNi_2As_2 at 2.4 GPa, roughly in line with $\text{Ba}_{1-x}\text{Sr}_x\text{Ni}_2\text{As}_2$ at a Sr% between $x = 0.4$ and 0.5 .

As pressure is increased, the three charge orders and the triclinic distortion have their onset temperature decline and eventually vanish. At the next measured pressures of 5.3–5.6 GPa, C-CDW1 was not detected down to the lowest measured temperature of 49 K. C-CDW2 was first detected upon cooling at a temperature of 110 K for a pressure of 5.4 GPa. The triclinic phase onsets at 110 K for 5.4 GPa. At

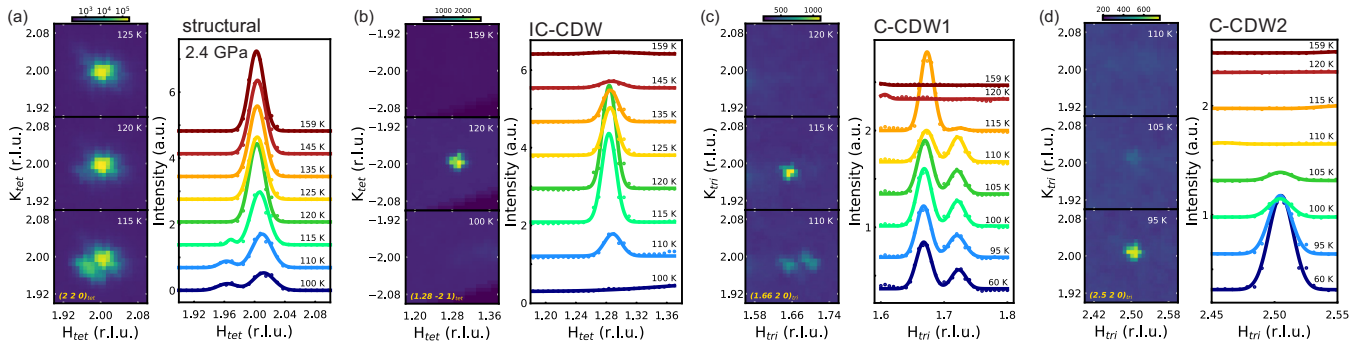


FIG. 2. Four distinct features of BaNi_2As_2 at 2.4 GPa (triclinic onset, IC-CDW, C-CDW1, and C-CDW2) shown as a function of decreasing temperature via momentum space plots and line cuts at (a) $[2\ 2\ 0]_{\text{tet}}$, (b) $[1.28\ -2\ 1]_{\text{tet}}$, (c) $[1.66\ 2\ 0]_{\text{tri}}$, and (d) $[2.5\ 2\ 0]_{\text{tri}}$. We find the IC-CDW onsets at a temperature of 145 K and vanishes at 105 K. We find the triclinic order, C-CDW1, and C-CDW2 onset at temperature of 120 K, 110 K, and 105 K, respectively. Line cuts are presented with Gaussian fits at the peaks for guidance.

a higher pressure of 8.4 GPa, triclinic order and the C-CDW2 phase appear together at 103 K (Fig. 3), and at 9.5 GPa and 10.5 GPa, the system remains tetragonal down to at least 37 K, with no charge order or triclinic distortion detected.

The pressure phase diagram of BaNi_2As_2 , presented in Fig. 4, shows that the onset of all three of its charge-ordered phases and the triclinic distortion decline slightly in temperature as pressure is increased, before eventually vanishing separately. The IC-CDW onset holds roughly around 140 K with increasing pressure before vanishing beyond 5.4 GPa. The C-CDW1 onset likewise holds around 115 K before vanishing beyond 2.4 GPa. C-CDW2 and the triclinic distortion remain roughly in step with each other at 110 K through 100 K

until their vanishings beyond 8.4 GPa. This picture compares well with the behavior seen in $\text{Ba}_{1-x}\text{Sr}_x\text{Ni}_2\text{As}_2$ [18].

We note that in $\text{Ba}_{1-x}\text{Sr}_x\text{Ni}_2\text{As}_2$, the extinguished C-CDW2 and triclinic phases were observed to end discontinuously as a function of Sr concentration at $x = 0.71$ before revealing a discontinuous enhancement in the bulk superconducting transition temperature [16], suggested to originate due to a competition with CDW order in the triclinic phase [18]. In BaNi_2As_2 under applied pressure, we find a 8.4 GPa, 103 K C-CDW2 + triclinic state onset followed by a tetragonal-only state at 9.5 GPa down to 37 K. This strongly suggests a similar discontinuous extinction of the C-CDW2 and triclinic phases. Additional evidence supporting a discontinuous vanishing can be seen in a piston pressure cell transport measurement of $\text{Ba}_{0.4}\text{Sr}_{0.6}\text{Ni}_2\text{As}_2$ (Fig. 5). Between the narrowly separated pressures 0.1 GPa and 0.51 GPa, the sample of $\text{Ba}_{0.4}\text{Sr}_{0.6}\text{Ni}_2\text{As}_2$ goes from an ambient-pressure-like

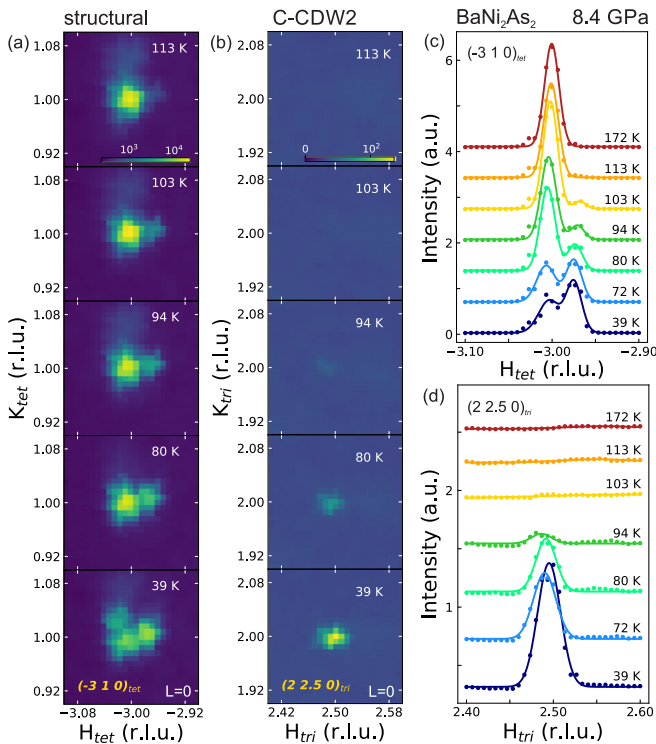


FIG. 3. 8.4 GPa x-ray data and line scans of (a) C-CDW2 and (b) triclinic order as seen by the $[-3\ 1\ 0]_{\text{tet}}$ and $[2\ 2.5\ 0]_{\text{tri}}$ peaks. We find that both phases onset at 103 K.

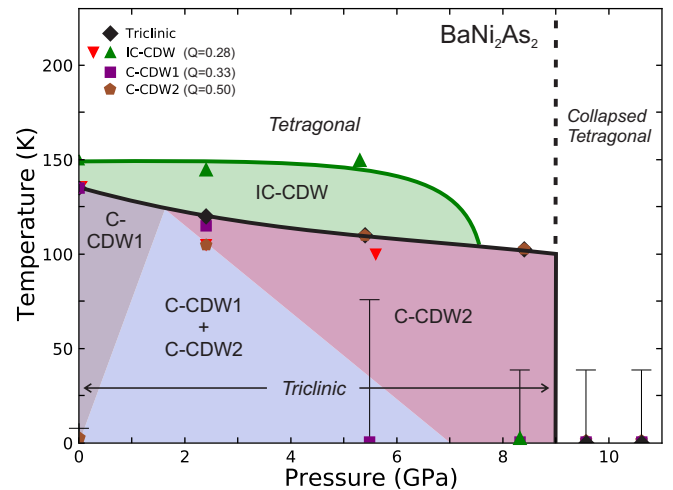


FIG. 4. Pressure-temperature phase diagram of BaNi_2As_2 as determined by x-ray diffraction measurements. Highlighted are the IC-CDW, triclinic order, C-CDW1, C-CDW2, and collapsed tetragonal regions. The green triangles show the onset of the IC-CDW and the red triangles show the disappearance of the IC-CDW. The large error bars seen at lower temperatures and higher pressures account for the absence of phases seen down to the lowest temperature measured for a given pressure.

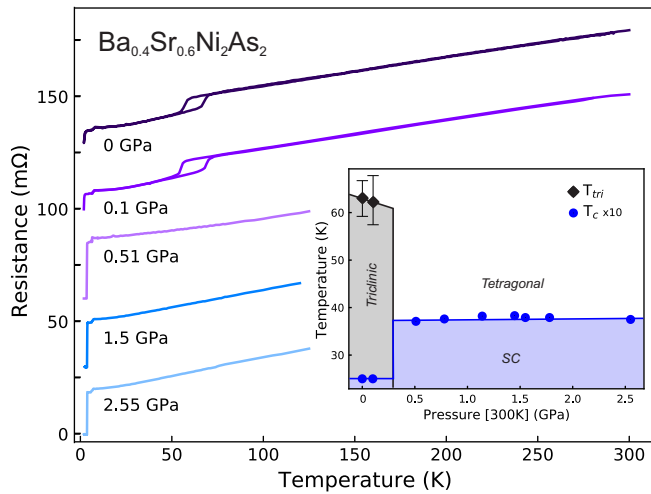


FIG. 5. Resistance vs temperature of a $\text{Ba}_{0.4}\text{Sr}_{0.6}\text{Ni}_2\text{As}_2$ sample shown at selected pressures demonstrating the discontinuous phase boundary between the C-CDW2 + triclinic state and tetragonal state. Curves has been separated for readability. Lowest temperature reached for these measurements was 1.8 K. Inset: Pressure-temperature phase diagram of $\text{Ba}_{0.4}\text{Sr}_{0.6}\text{Ni}_2\text{As}_2$ taken from the resistivity data. T_c has been amplified by 10 for visibility.

state of a C-CDW2 + triclinic phase with an onset temperature of 60 K to a complete vanishing of both phases followed by an enhanced superconducting temperature of 3.6 K. This enhanced T_c state persists through the highest recorded pressure of 2.55 GPa. The behavior induced in pressurized $\text{Ba}_{0.4}\text{Sr}_{0.6}\text{Ni}_2\text{As}_2$, coupled with our x-ray observations in pressurized BaNi_2As_2 , and in previously reported ambient pressure $\text{Ba}_{1-x}\text{Sr}_x\text{Ni}_2\text{As}_2$, point to there being a discontinuous phase boundary between triclinic + C-CDW2 and the enhanced superconducting state induced by a shrinking lattice caused by Sr isovalent substitution, pressure, or a combination of both.

Lattice parameter studies for many systems with the ThCr_2Si_2 -type 122 crystal structure have found a sensitive evolution of structure with pressure as a major driver of the interesting physics seen in their systems. In particular, a small subset of this family exists very near a structural instability that leads to an isostructural collapse of the tetragonal unit cell. Called the collapsed tetragonal (CT) phase, this phase exhibits a severely reduced c -axis lattice parameter that can be driven by applied or chemical pressure, as shown in CaFe_2As_2 [31–35], BaFe_2As_2 [36,37], SrFe_2As_2 [38], $\text{CaRbFe}_4\text{As}_4$ [39], LaRu_2P_2 [40], and SrCo_2As_2 [40]. In Fig. 6, we compare lattice parameters of BaNi_2As_2 up to 17 GPa pressures, measured at 300 K using powder x-ray diffraction, to those of $\text{Ba}_{1-x}\text{Sr}_x\text{Ni}_2\text{As}_2$ measured at ambient pressure at 250 K [16]. We first note the difference in temperatures between the two data sets of pressurized BaNi_2As_2 at 300 K and ambient-pressure $\text{Ba}_{1-x}\text{Sr}_x\text{Ni}_2\text{As}_2$ at 250 K, but argue it is not significant enough to alter any meaningful comparisons. At 300 K, BaNi_2As_2 has reported c - and a -axis values of 11.6190 Å and of 4.1474 Å, respectively [41], while SrNi_2As_2 has reported values of 10.290 Å and 4.154 Å, respectively [42]. The 250 K $\text{Ba}_{1-x}\text{Sr}_x\text{Ni}_2\text{As}_2$ lattice parameter

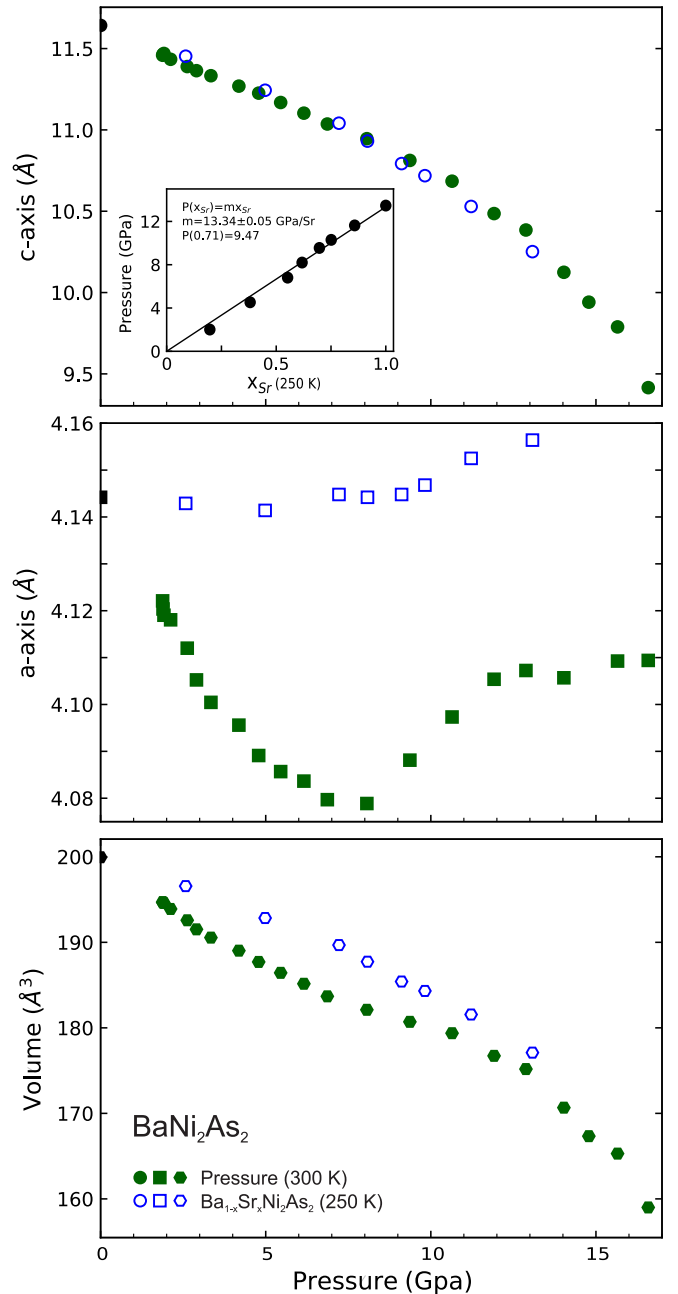


FIG. 6. Lattice constant and unit cell volume data of 250 K $\text{Ba}_{1-x}\text{Sr}_x\text{Ni}_2\text{As}_2$ (blue, open points) and 300 K pressurized BaNi_2As_2 (green, closed points) taken from powder x-ray data. The 250 K $\text{Ba}_{1-x}\text{Sr}_x\text{Ni}_2\text{As}_2$ data were taken from the Supplemental Material of Ref. [16]. The 300 K BaNi_2As_2 data were taken from pressurized powder x-ray diffraction data using the [110] peak for the a axis and the [112] peak for the c axis. The $\text{Ba}_{1-x}\text{Sr}_x\text{Ni}_2\text{As}_2$ scale was chosen such that the c axis of both systems align, visually showing the correlation between the two systems. Inset: Points in pressure plotted against equivalent points in Sr substitution for alike c -axis values. A line, $P(x_{\text{Sr}}) = mx_{\text{Sr}}$, is fit to the correlation, yielding $m = 13.34 \pm 0.05$ GPa/Sr as the correlation constant relating the c axis of pressure to the c axis of $\text{Ba}_{1-x}\text{Sr}_x\text{Ni}_2\text{As}_2$.

data set has values of 11.6423 Å and 4.1442 Å for $x_{\text{Sr}} = 0$, as well as 10.2515 Å and 4.1564 Å for $x_{\text{Sr}} = 1$. The differences between 300 K and 250 K lattice parameters for BaNi_2As_2 and

SrNi_2As_2 are fractions of a percent and therefore appropriate for our comparisons and discussions.

As shown in Fig. 6(a), we find a correlation between the change in c axis driven by Sr substitution and that driven by applied pressure in BaNi_2As_2 , with both systems showing a monotonic decrease at a proportional rate. To directly compare, c -axis values of the pressurized BaNi_2As_2 data set were linearly interpolated and matched with those of the x_{Sr} series, fitting a linear relation $P(x_{\text{Sr}}) = mx_{\text{Sr}}$ (Fig. 6 insert) with $m = 13.34 \pm 0.05$ GPa/Sr, between chemical pressure and physical pressure for BaNi_2As_2 along the c axis. We test this correlation model with noteworthy points in x_{Sr} : the discontinuous phase boundary and maximum T_c , $x_C = 0.71$, as well as the approximate ending point for the IC-CDW and nematic order, $x_{\text{IC-CDW}} = 0.55$. Using this linear relationship, we find $P(x_C) = 9.47$ GPa and $P(x_{\text{IC-CDW}}) = 7.34$ GPa, closely predicting the corresponding events in the pressure.

In contrast, the evolution of the a axis with pressure and Sr substitution [Fig. 6(b)] is not proportional. This is likely due to the difference between unconstrained chemical pressure, where Sr substitution has a dominant effect in shrinking the c axis but nearly no effect on the in-plane bonding, while the quasihydrostatic pressure conditions in the DAC force both lattice constants to decrease in unison. Interestingly, the nearly flat evolution of the a axis in $\text{Ba}_{1-x}\text{Sr}_x\text{Ni}_2\text{As}_2$ shows a sudden increase near $x_{\text{Sr}} = 0.7$, and likewise a more dramatic inflection occurs in pressurized BaNi_2As_2 near ~ 8 GPa, which are nearly equivalent effective pressure points according to the c -axis scaling above. These both occur when the c axis of both systems also shows a kink in near-linear evolution close to ~ 10.8 Å.

This peculiar evolution of a - and c -axis lattice constants is very similar to what is observed at the CT phase transition of many Fe pnictides [31–39], where a bonding rearrangement occurs when the As-As interlayer distance crosses about 3 Å. Generally, when either physical or chemical pressure is applied to these systems, there is a rise and fall in the a axis with a valley to peak size ranging from 0.05 Å to 0.15 Å, a discontinuous jump in the As-As interlayer distance, a flattening of the FeAs layer, and the most prominent change occurring in the c -axis lattice constant. This collapse is known to quench the Fe moment, suppressing its magnetism and having an effect on superconductivity [43]. In pressurized BaNi_2As_2 and $\text{Ba}_{1-x}\text{Sr}_x\text{Ni}_2\text{As}_2$, we find a similar CT transition developing via an a -axis expansion. Eckberg also noted that the rise in the a axis coincides with $d_{\text{As-As}}$ crossing 3 Å [16], the same threshold noted for the Fe-pnictide CT phases. The onset of this CT transition in x_{Sr} and pressure coincides with the charge order and triclinic order vanishing discontinuously. During this CT transition, we speculate that the Ni-As layers begin to flatten along the ab plane for the duration of this a -axis expansion, similarly to the flattening Fe-As layers in the CT phase of Fe pnictides. We thus infer that the CT transition in BaNi_2As_2 plays a key role in abruptly extinguishing both charge order and the triclinic structural phase. Open questions

remain as to why the CT transition in $\text{Ba}_{1-x}\text{Sr}_x\text{Ni}_2\text{As}_2$ is much subtler than that found in iron-based materials and even that observed here in BaNi_2As_2 under applied pressure. Further study into crystallographic parameters, Fermi surface and transport response and spectroscopies may help elucidate these questions.

IV. CONCLUSION

In conclusion, we have tracked the pressure and temperature dependence of the charge orders, the triclinic distortion, and the lattice parameters of BaNi_2As_2 and have compared them to previously reported results in $\text{Ba}_{1-x}\text{Sr}_x\text{Ni}_2\text{As}_2$. We find that the four phases, IC-CDW, C-CDW1, C-CDW2, and triclinic order slowly decline in onset temperature as a function of pressure until they eventually vanish at higher temperature. We also find that C-CDW2 and triclinic order, the final phases to survive, vanish discontinuously between 8.4 GPa and 9.5 GPa. At this point in pressure, we find a CT transition in BaNi_2As_2 via an expanding a axis as measured through powder x-ray diffraction. We speculate that this CT phase plays a role in extinguishing charge order and enhancing superconductivity plus nematic susceptibility immediately following it. These data continue to present BaNi_2As_2 as a rich, nonmagnetic superconducting system worthy of study.

Note added. Recently, the authors became aware of a similar study of BaNi_2As_2 under applied pressure that provides additional structural information [44].

ACKNOWLEDGMENTS

This work is supported by the U.S. National Science Foundation Grant No. DMR1905891 and the Gordon and Betty Moore Foundation's EPIQS Initiative through Grant No. GBMF9071. Work at LLNL was supported by the U.S. Department of Energy, Office of Science, Office of Workforce Development for Teachers and Scientists, Office of Science Graduate Student Research (SCGSR) program, which is administered by the Oak Ridge Institute for Science and Education (ORISE) for the DOE. ORISE is managed by ORAU under Contract No. DE-SC0014664. All opinions expressed in this paper are of the authors and do not necessarily reflect the policies and views of DOE, ORAU, or ORISE. Experiments were also funded in part by a QuantEmX grant from the Institute for Complex Adaptive Matter and the Gordon and Betty Moore Foundation through Grant No. GBMF9616. Portions of this work were performed at HPCAT (Sector 16), Advanced Photon Source (APS), Argonne National Laboratory. HPCAT operations are supported by DOE-NNSA's Office of Experimental Sciences. The Advanced Photon Source is a U.S. Department of Energy (DOE) Office of Science User Facility operated for the DOE Office of Science by Argonne National Laboratory under Contract No. DE-AC02-06CH11357. This work was performed under the auspices of the U.S. Department of Energy by Lawrence Livermore National Laboratory under Contract No. DE-AC52-07NA27344.

[1] J. M. Tranquada, B. J. Sternlieb, J. D. Axe, Y. Nakamura, and S. Uchida, *Nature (London)* **375**, 561 (1995).

[2] M. v. Zimmermann, A. Vigliante, T. Niemöller, N. Ichikawa, T. Frello, J. Madsen, P. Wochner, S. Uchida, N. H. Andersen, J. M.

- Tranquada, D. Gibbs, and J. R. Schneider, *Europhys. Lett.* **41**, 629 (1998).
- [3] P. Abbamonte, A. Ruydy, S. Smadici, G. D. Gu, G. A. Sawatzky, and D. L. Feng, *Nat. Phys.* **1**, 155 (2005).
- [4] J. Fink, E. Schierle, E. Weschke, J. Geck, D. Hawthorn, V. Soltwisch, H. Wadati, H.-H. Wu, H. A. Dürr, N. Wizen, B. Büchner, and G. A. Sawatzky, *Phys. Rev. B* **79**, 100502(R) (2009).
- [5] B. Keimer, S. A. Kivelson, M. R. Norman, S. Uchida, and J. Zaanen, *Nature (London)* **518**, 179 (2015).
- [6] N. Auvray, B. Loret, S. Benhabib, M. Cazayous, R. D. Zhong, J. Schneeloch, A. F. G. D. Gu, D. Colson, I. Paul, A. Sacuto, and Y. Gallais, *Nat. Commun.* **10**, 5209 (2019).
- [7] S. Kivelson, E. Fradkin, and V. Emery, *Nature (London)* **393**, 550 (1998).
- [8] G.-Z. Liu, J.-R. Wang, and J. Wang, *Phys. Rev. B* **85**, 174525 (2012).
- [9] J. Orenstein and A. J. Miller, *Science* **288**, 468 (2000).
- [10] D. C. Johnston, *Adv. Phys.* **59**, 803 (2010).
- [11] J. Paglione and R. Greene, *Nat. Phys.* **6**, 645 (2010).
- [12] G. R. Stewart, *Rev. Mod. Phys.* **83**, 1589 (2011).
- [13] R. M. Fernandes, A. V. Chubukov, and J. Schmalian, *Nat. Phys.* **10**, 97 (2014).
- [14] H.-H. Kuo, J.-H. Chu, J. C. Palmstrom, S. A. Kivelson, and I. R. Fisher, *Science* **352**, 958 (2016).
- [15] J. Collini, S. Lee, Stella X.-L. Sun, C. Eckberg, D. J. Campbell, P. Abbamonte, and J. Paglione, *Phys. Rev. B* **106**, 054107 (2022).
- [16] C. Eckberg, D. J. Campbell, T. Metz, J. Collini, H. Hodovanets, T. Drye, P. Zavalij, M. H. Christensen, R. M. Fernandes, S. Lee, P. Abbamonte, J. Lynn, and J. Paglione, *Nat. Phys.* **16**, 346 (2020).
- [17] S. Lee, G. de la Peña, S. X.-L. Sun, M. Mitrano, Y. Fang, H. Jang, J.-S. Lee, C. Eckberg, D. Campbell, J. Collini, J. Paglione, F. M. F. de Groot, and P. Abbamonte, *Phys. Rev. Lett.* **122**, 147601 (2019).
- [18] S. Lee, J. Collini, Stella X.-L. Sun, M. Mitrano, X. Guo, C. Eckberg, J. Paglione, E. Fradkin, and P. Abbamonte, *Phys. Rev. Lett.* **127**, 027602 (2021).
- [19] N. S. Pavlov, N. S. Pavlov, T. K. Kim, A. Yaresko, K.-Y. Choi, I. A. Nekrasov, and D. V. Evtushinsky, *J. Phys. Chem.* **125**, 28075 (2021).
- [20] A. R. Pokharel, V. Grigorev, A. Mejas, T. Dong, A. A. Haghighirad, R. Heid, Y. Yao, M. Merz, M. L. Tacon, and J. Demsar, *Commun. Phys.* **5**, 141 (2022).
- [21] Y. Yao, R. Willa, T. Lacmann, S.-M. Souliou, M. Frachet, K. Willa, M. Merz, F. Weber, C. Meingast, R. Heid, A.-A. Haghighirad, J. Schmalian, and M. L. Tacon, *Nat. Commun.* **13**, 4535 (2022).
- [22] T. Park, H. Lee, E. Bauer, J. Thompson, and F. Ronning, *J. Phys.: Conf. Ser.* **200**, 012155 (2010).
- [23] N. Kurita, F. Ronning, Y. Tokiwa, E. D. Bauer, A. Subedi, D. J. Singh, J. D. Thompson, and R. Movshovich, *Phys. Rev. Lett.* **102**, 147004 (2009).
- [24] M. Rotter, M. Tegel, D. Johrendt, I. Schellenberg, W. Hermes, and R. Pöttgen, *Phys. Rev. B* **78**, 020503(R) (2008).
- [25] K. Kothapalli, F. Ronning, E. D. Bauer, A. J. Schultz, and H. Nakotte, *J. Phys.: Conf. Ser.* **251**, 012010 (2010).
- [26] Y. Song, S. Wu, X. Chen, Y. He, H. Uchiyama, B. Li, S. Cao, J. Guo, G. Cao, and R. Birgeneau, *Phys. Rev. B* **107**, L041113 (2023).
- [27] S. M. Souliou, T. Lacmann, R. Heid, C. Meingast, M. Frachet, L. Paolasini, A.-A. Haghighirad, M. Merz, A. Bosak, and M. Le Tacon, *Phys. Rev. Lett.* **129**, 247602 (2022).
- [28] A. Dewaele, M. Torrent, P. Loubeyre, and M. Mezouar, *Phys. Rev. B* **78**, 104102 (2008).
- [29] H. Gretarsson, S. R. Saha, T. Drye, J. Paglione, J. Kim, D. Casa, T. Gog, W. Wu, S. R. Julian, and Y.-J. Kim, *Phys. Rev. Lett.* **110**, 047003 (2013).
- [30] A. Dewaele, P. Loubeyre, and M. Mezouar, *Phys. Rev. B* **70**, 094112 (2004).
- [31] S. R. Saha, N. P. Butch, T. Drye, J. Magill, S. Ziemak, K. Kirshenbaum, P. Y. Zavalij, J. W. Lynn, and J. Paglione, *Phys. Rev. B* **85**, 024525 (2012).
- [32] M. S. Torikachvili, S. L. Bud'ko, N. Ni, and P. C. Canfield, *Phys. Rev. Lett.* **101**, 057006 (2008).
- [33] T. Park, E. Park, H. Lee, T. Klimczuk, E. D. Bauer, F. Ronning, and J. D. Thompson, *J. Phys.: Condens. Matter* **20**, 322204 (2008).
- [34] K. Prokeš, A. Kreyssig, B. Ouladdiaf, D. K. Pratt, N. Ni, S. L. Bud'ko, P. C. Canfield, R. J. McQueeney, D. N. Argyriou, and A. I. Goldman, *Phys. Rev. B* **81**, 180506(R) (2010).
- [35] J. R. Jeffries, N. P. Butch, K. Kirshenbaum, S. R. Saha, G. Samudrala, S. T. Weir, Y. K. Vohra, and J. Paglione, *Phys. Rev. B* **85**, 184501 (2012).
- [36] W. Uhoya, A. Stemshorn, G. Tsoi, Y. K. Vohra, A. S. Sefat, B. C. Sales, K. M. Hope, S. T. Weir, *Phys. Rev. B* **82**, 144118 (2010).
- [37] R. Mittal, S. K. Mishra, S. L. Chaplot, S. V. Ovsyannikov, E. Greenberg, D. M. Trots, L. Dubrovinsky, Y. Su, T. Brueckel, S. Matsuishi, H. Hosono, and G. Garbarino, *Phys. Rev. B* **83**, 054503 (2011).
- [38] W. O. Uhoya, J. M. Montgomery, G. M. Tsoi, Y. K. Vohra, M. A. McGuire, A. S. Sefat, B. C. Sales, and S. T. Weir, *J. Phys.: Condens. Matter* **23**, 122201 (2011).
- [39] R. L. Stillwell, X. Wang, L. Wang, D. J. Campbell, J. Paglione, S. T. Weir, Y. K. Vohra, and J. R. Jeffries, *Phys. Rev. B* **100**, 045152 (2019).
- [40] G. Drachuck, A. Sapkota, W. T. Jayasekara, K. Kothapalli, S. L. Bud'ko, A. I. Goldman, A. Kreyssig, and P. C. Canfield, *Phys. Rev. B* **96**, 184509 (2017).
- [41] A. S. Sefat, M. A. McGuire, R. Jin, B. C. Sales, D. Mandrus, F. Ronning, E. D. Bauer, and Y. Mozharivskiy, *Phys. Rev. B* **79**, 094508 (2009).
- [42] M. Pfisterer and G. Nagorsen, *Z. Naturforsch. B* **35**, 703 (1980).
- [43] L. Ma, G. F. Ji, J. Dai, S. R. Saha, J. Paglione, and W. Yu, *Chin. Phys. B* **22**, 057401 (2013).
- [44] T. Lacmann, A.-A. Haghighirad, S.-M. Souliou, M. Merz, G. Garbarino, K. Glazyrin, R. Heid, and M. L. Tacon, *arXiv:2307.04660*.