

Constraints on a split superconducting transition under uniaxial strain in Sr_2RuO_4 from scanning SQUID microscopy

Eli Mueller^{1,2}, Yusuke Iguchi^{1,3}, Christopher Watson¹, Clifford W. Hicks^{4,5},
Yoshiteru Maeno^{6,7} and Kathryn A. Moler^{1,2,3}

¹Stanford Institute for Materials and Energy Sciences, SLAC National Accelerator Laboratory,
2575 Sand Hill Road, Menlo Park, California 94025, USA

²Department of Physics, Stanford University, Stanford, California 94305, USA

³Geballe Laboratory for Advanced Materials, Stanford University, Stanford, California 94305, USA

⁴Max Planck Institute for the Chemical Physics of Solids, Nöthnitzer Straße 40, Dresden 01187, Germany

⁵School of Physics and Astronomy, University of Birmingham, Birmingham B15 2TT, United Kingdom

⁶Department of Physics, Graduate School of Science, Kyoto University, Kyoto 606-8502, Japan

⁷Toyota Riken - Kyoto University Research Center (TRiKUC), Kyoto University, Kyoto 606-8501, Japan



(Received 27 June 2023; accepted 19 September 2023; published 4 October 2023)

More than two decades after the discovery of superconductivity in Sr_2RuO_4 , it is still unclear whether the order parameter has a single component or two degenerate components. For any two-component scenario, application of uniaxial strain is expected to lift the degeneracy, generating two distinct phase transitions. The presence of a second (lower-temperature) transition may be observable by probes that are sensitive to changes in the London penetration depth, λ , as a function of temperature, T . Here, we use scanning SQUID microscopy combined with a uniaxial strain device to test for a second transition under strain. We only observe a single transition. Within the temperature range where a second transition has been suggested by μSR measurements [Grinenko *et al.*, *Nat. Phys.* **17**, 748 (2021)], we further place a tight upper bound of less than 1% on the change in the zero temperature superfluid density $n_s \propto \lambda^{-2}(0)$ due to a second transition, suggesting that such a transition does not occur. These results constrain theories of the order parameter in Sr_2RuO_4 .

DOI: [10.1103/PhysRevB.108.144501](https://doi.org/10.1103/PhysRevB.108.144501)

I. INTRODUCTION

Strontium ruthenate (Sr_2RuO_4) has attracted considerable scientific interest as an unconventional superconductor [2–6]. After more than a quarter century since its discovery [7], the symmetry of the superconducting order parameter in Sr_2RuO_4 continues to be debated [8,9]. Measurements probing the spin part of the order parameter have ruled out spin-triplet pairing [10–12]. What remains unclear is the symmetry of the orbital part of the order parameter. Evidence for time-reversal symmetry breaking (TRSB) superconductivity comes from muon spin relaxation (μSR) measurements [1,13–15], nonzero Kerr rotation below the superconducting critical temperature T_c [16], and signatures in junction experiments that suggest chiral domain formation in the superconducting state [17,18]. In addition, ultrasound measurements have provided evidence of a two-component order parameter, consistent with chiral superconductivity [19,20]. Table I summarizes the even-parity order parameters allowed under the point group D_{4h} for the tetragonal symmetry of Sr_2RuO_4 . The only order parameter that can account for TRSB superconductivity with a symmetry protected, two-component degeneracy is chiral $d_{xz} \pm id_{yz}$ pairing [21,22]. However, given the two-dimensional nature of the Fermi surface, an order parameter with horizontal line nodes would be unexpected. In addition, thermal conductivity [23] and scanning tunneling microscopy measurements [24] indicate vertical line nodes. Therefore, alternative two-

component order parameters, $d \pm ig$ and $d \pm is$, have been proposed which assume that the system is tuned so two one-dimensional pairing states are accidentally degenerate [22,25–30].

For a general two-component, TRSB order parameter, $\Delta = \Delta_A + i\Delta_B$, application of a uniaxial stress is expected to lift the degeneracy of the Δ_A and Δ_B components and create two distinct phase transitions at $T_{c,1}$ and $T_{c,2}$ with a cusp in the $T_{c,1}$ versus strain curve as shown in Fig. 1(a). For the case of chiral $d_{xz} + id_{yz}$ pairing, the degeneracy is protected by the tetragonal symmetry of the lattice and the splitting arises as the applied strain breaks this symmetry. However, for the $d + ig$ and $d + is$ states, the degeneracy is not symmetry protected and requires fine tuning to achieve $T_{c,1} \approx T_{c,2}$ in the unstressed system. Applying an external strain would, in general, alter this fine-tuning, resulting in transition splitting.

Experimental evidence for a transition splitting in uniaxially strained Sr_2RuO_4 is ambiguous. Bulk and local susceptibility measurements under strain show a smooth quadratic dependence of T_c near zero strain [32–34], whereas a cusp would be expected with transition splitting. Furthermore, heat capacity and elastocaloric effect measurements show no evidence of a second transition under strain [35,36]. However, μSR measurements show an apparent splitting between T_c and the onset temperature of TRSB, T_{TRSB} [Fig. 1(b)] [1]. The discrepancy between the nonobservations and the μSR results call into question whether the TRSB observed

TABLE I. Even-parity (spin-singlet) irreducible representations of the tetragonal point group D_{4h} [31].

Irreducible representation	Order parameter	Dimensionality	Nodal structure
A_{1g}	s	1	None
A_{2g}	$g_{xy}(x^2-y^2)$	1	Vertical line
B_{1g}	$d_{x^2-y^2}$	1	Vertical line
B_{2g}	d_{xy}	1	Vertical line
E_g	$\{d_{xz}, d_{yz}\}$	2	Vertical and horizontal lines

in μ SR and Kerr measurements is associated with a bulk transition of the superconducting state.

If the anomaly at T_{TRSB} corresponds to a transition in the superconducting order parameter, then this transition should, in general, be accompanied by an anomaly in the superfluid density and may be observable by probes that are sensitive to the London penetration depth. Bulk mutual inductance measurements on the multicomponent superconductor UPt_3 have indeed shown two transitions that coincide with the double jump seen in heat capacity [37–39]; however, the magnitude of $\Delta\lambda$ associated with the second transition was not reported in these studies. Multiple superconducting phases are theoretically expected in the hexagonal lattice symmetry of UPt_3 at ambient pressure. However, bulk measurements are, in general, not very sensitive to changes in penetration depth and, furthermore, for bulk measurements, inhomogeneity is a potential problem. Bulk measurements on Sr_2RuO_4 under strain show substantial broadening of the superconducting transition [32,33,35], likely due to internal strain inhomogeneity, which may obscure any signature of a second transition [40].

To test for the presence of a second transition, $T_{c,2}$, we perform scanning superconducting quantum interference device (SQUID) microscopy on a single crystal of Sr_2RuO_4 under uniaxial compression along the $\langle 100 \rangle$ crystal axis. In our microscope, the local diamagnetic response of a superconductor is probed with micron-scale spatial resolution. By measuring the local magnetic susceptibility versus temperature under fixed compression, we place an upper limit of less than 1% on the change in the $T \rightarrow 0$ superfluid density, $\lambda^{-2}(0)$, from a second-order parameter with a transition in the temperature range suggested by μ SR data [1].

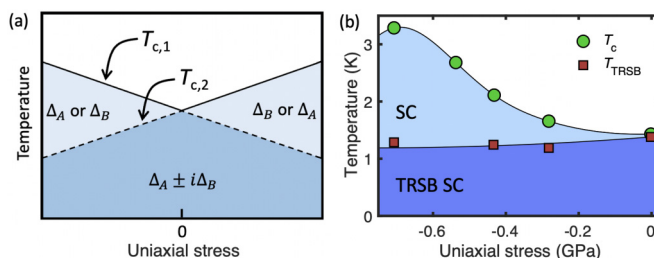


FIG. 1. Phase diagram for a two-component TRSB superconductor under uniaxial stress. (a) Schematic of the stress-temperature phase diagram for a general two-component ($\Delta = \Delta_A \pm i\Delta_B$) TRSB superconductor with a transition splitting under uniaxial stress. (b) Experimentally observed T_c and T_{TRSB} versus uniaxial compression along the $\langle 100 \rangle$ crystal axis (data adapted from Ref. [1]). The onset of TRSB below T_c has been interpreted as evidence of a $\{d_{xz}, d_{yz}\}$ to $d_{xz} + id_{yz}$ transition of the order parameter.

II. METHODS

The main components of our SQUID susceptometers [41] consist of a magnetic flux sensing pickup loop with $0.25 \mu\text{m}$ inner radius and a concentric field coil with $0.5 \mu\text{m}$ inner radius as shown in Fig. 2(a). We apply an ac current with amplitude I_{fc} through the field coil, generating an ac magnetic flux through the pickup loop. Near a superconducting sample, the Meissner effect screens the field generated by the field coil and reduces the mutual inductance of the pickup loop-field coil pair. By recording this mutual inductance, we obtain a measure of the local magnetic susceptibility of the sample, χ . We report the mutual inductance in units of Φ_0/A , where $\Phi_0 = h/2e$ is the flux quantum. To measure the temperature dependence of the local susceptibility at a point on the sample, we bring the SQUID sensor chip in light mechanical contact

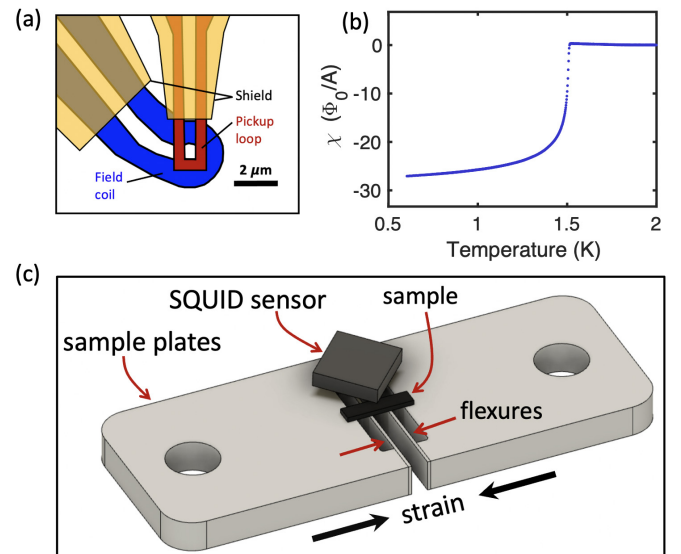


FIG. 2. Experimental setup for scanning SQUID microscopy under uniaxial strain. (a) Schematic of the SQUID susceptometer pickup loop (red) and field coil (blue). Superconducting shields (yellow) minimize magnetic flux coupling into the SQUID circuit. (b) Local susceptibility as a function of temperature measured under zero applied strain, showing a sharp onset of diamagnetism at the critical temperature. (c) Schematic of the movable sample plates with a sample mounted for uniaxial stress and a SQUID sensor chip aligned to the sample. The sample length is approximately 2 mm. The holes shown are used to anchor the sample plates to the main body (not shown) of the strain device. Deformation of the main body via piezoelectric actuators induces a displacement of the sample plates. The flexures are incorporated to reduce sample bending under strain and are made of titanium plates with a thickness of $100 \mu\text{m}$.

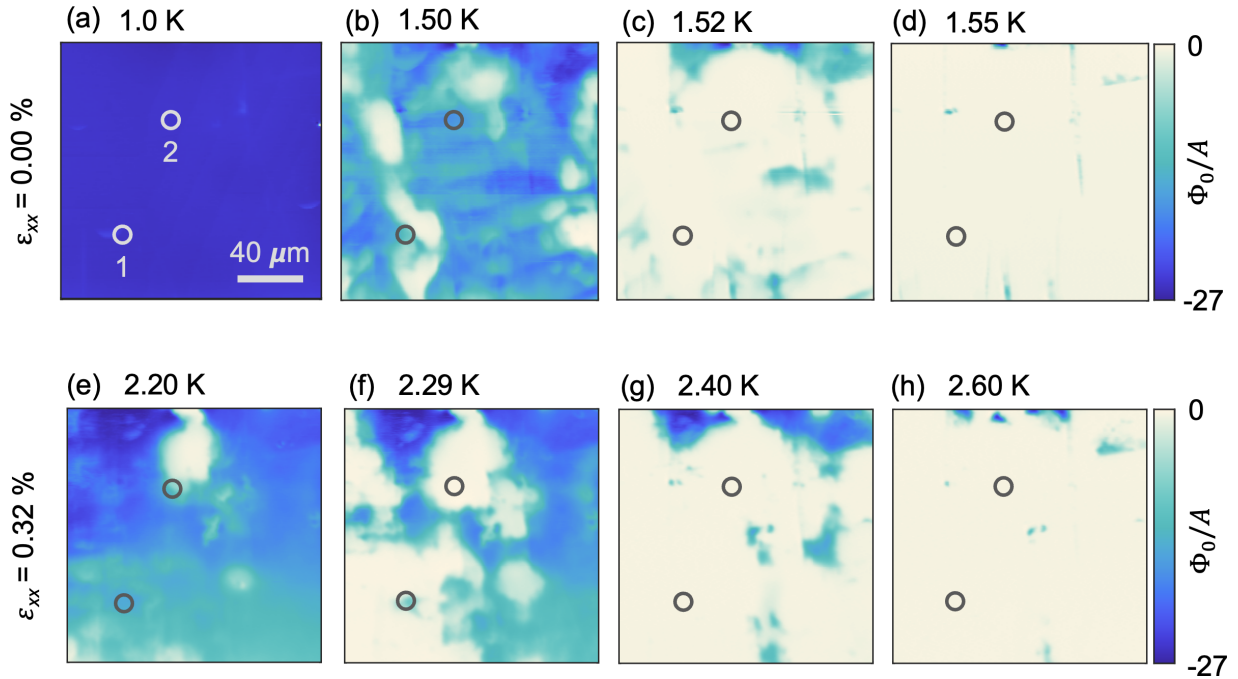


FIG. 3. Spatial inhomogeneity of diamagnetism through the bulk T_c . (a)–(d) Temperature series scans of susceptibility under zero applied strain. At $T = 1.0$ K, the sample is superconducting indicated by a nearly uniform diamagnetic susceptibility. The markers indicate the points that local susceptibility versus temperature was measured under a series of compressive strains. At temperatures near the bulk $T_c = 1.5$ K, spatial variations in susceptibility indicate small inhomogeneity in local T_c . At $T = 1.55$ K, the majority of the sample is in the normal state. Several small spots of weak diamagnetism are likely due to impurities and defects causing strain enhanced T_c locally. (e)–(h) Susceptibility scans over the same region with an applied strain of $\epsilon_{xx} = -0.32\%$. Under this compression, the bulk T_c over this region increases to ~ 2.3 K and the spatial inhomogeneity in the overall T_c increases to over 300 mK, although local (micron scale) T_c remains sharp. All scans were taken with a field coil ac current amplitude of $I_{fc} = 0.5$ mA.

with the sample and cycle the temperature while recording the susceptibility. An example of such a measurement at zero applied strain is shown in Fig. 2(b), where a sharp onset of diamagnetism ($\chi < 0$) is observed near the $T_c \approx 1.5$ K. We combine scanning SQUID microscopy with a piezoelectric-based strain apparatus similar to that described previously [34,42]. A schematic of the measurement setup is shown in Fig. 2(c). The sample is mounted with an open-face configuration where only one face of the sample (opposite of the scan surface) is anchored at each end to the movable titanium sample plates. In contrast, previous strain measurements employed a clamping configuration [34,42]. This open-face design allows for uninhibited access to the top face of the sample, which simplifies the process of aligning the SQUID to the sample. This asymmetric mounting configuration between the top and bottom surfaces of the sample causes the sample to bend when the sample plates are displaced, reducing strain transfer to the upper surface of the sample. To reduce this bending, our setup incorporates titanium flexures that resist sample bending. We also note that because our SQUID susceptometer is a local probe, the sharpness of our observed transitions is determined by the local strain gradient within our measurement volume. Finite element simulations (see Appendix B) of the sample and strain device suggest that the magnitude of the bending-induced strain variation over the measurement volume is $\sim 0.1\%$ of the applied strain, which is likely to be small in comparison with internal strain in the sample due to extended defects. Thus, our susceptome-

ters do not lose strain resolution because of long-length-scale strain gradients caused by bending. The sample is anchored to the titanium sample plates and flexures using Masterbond EP29LPSP epoxy and is oriented to apply uniaxial strain along the $\langle 100 \rangle$ crystal axis with a nominal strained sample length of 1.6 mm. Displacement of the sample plates is measured *in situ* using a parallel plate capacitor incorporated in the strain apparatus. We note that as the sample plates are displaced, the load applied to the sample through the epoxy is transferred over a nonzero length scale which depends on the thickness and Young's modulus of the epoxy [42]. This effect introduces uncertainty in determining the true strain in the sample. Therefore, we use the T_c versus strain curve reported in Ref. [43] to calibrate our strain values from our measured changes in T_c under pressure.

III. RESULTS AND DISCUSSION

Temperature series scans of susceptibility with the sample held under zero strain are shown in Figs. 3(a)–3(d). At the lowest temperature $T = 1.0$ K, the sample shows almost uniform diamagnetism. Spots labeled 1 and 2 indicate where susceptibility versus temperature traces are recorded under a series of applied strains. At temperatures near the bulk $T_c = 1.5$ K [Figs. 3(b) and 3(c)], the diamagnetism becomes inhomogeneous due to spatial variation of local T_c . At the highest temperature [Fig. 3(d)], small spots remain weakly diamagnetic, likely due to inclusions and defects inducing

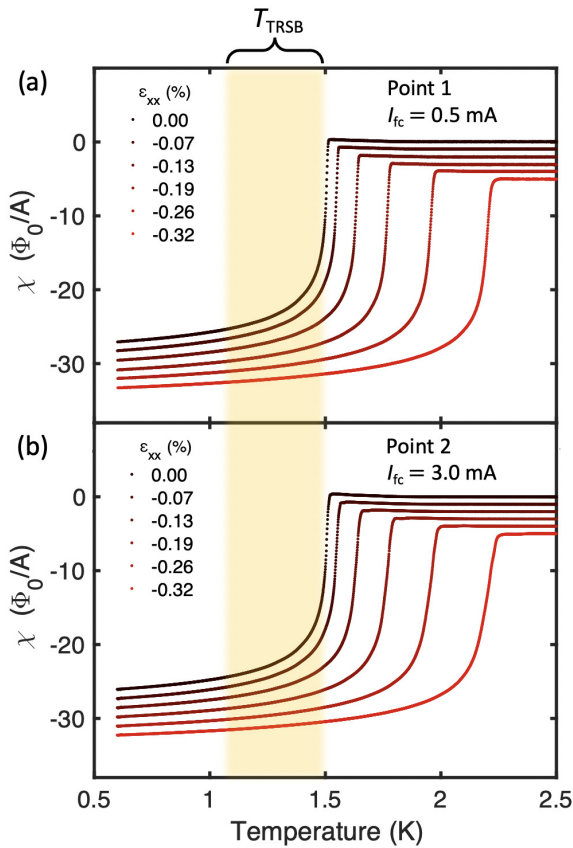


FIG. 4. Local susceptibility as a function of temperature recorded under different values of compressive strain. (a), (b) Data taken at points 1 and 2, respectively, as indicated in Fig. 3(a). The yellow bands indicate the temperature range where an onset of TRSB has been observed in μ SR measurements on uniaxially strained samples [1]. All curves are offset vertically for clarity.

a local strain enhancement of T_c [44,45]. From these scans taken under zero applied strain, the spatial variation of the T_c over this region of the sample is ~ 50 mK. Figures 3(e)–3(h) show susceptibility scans over the same region while applying a compressive strain of $\epsilon_{xx} = -0.32\%$. The bulk T_c of this region increases to approximately 2.3 K and the scale of the spatial inhomogeneity in T_c increases to over 300 mK. Similar transition broadening under strain has been observed in previous bulk measurements [32,33,35] and is expected because the quadratic dependence of T_c on strain implies that strain disorder increases variations in T_c at values of ϵ_{xx} for which $dT_c/d\epsilon_{xx}$ is large.

Figures 4(a) and 4(b) show susceptibility versus temperature traces under a series of fixed strains at point 1 ($I_{fc} = 0.5$ mA) and point 2 ($I_{fc} = 3.0$ mA) [46]. In this measurement, the height of the field coil from the sample is 0.4–0.6 μ m and the field at the sample per unit of current through the field coil is 4–6 G/mA. The yellow shaded bands indicate the range of T_{TRSB} that has been observed in μ SR measurements under uniaxial strain [1]. A notable feature of these temperature traces is the sharpness of the transitions at the highest applied strain which highlights the advantage of our local probe technique: While the large-scale spatial inhomogeneity in T_c under strain is broadened to ~ 300 mK

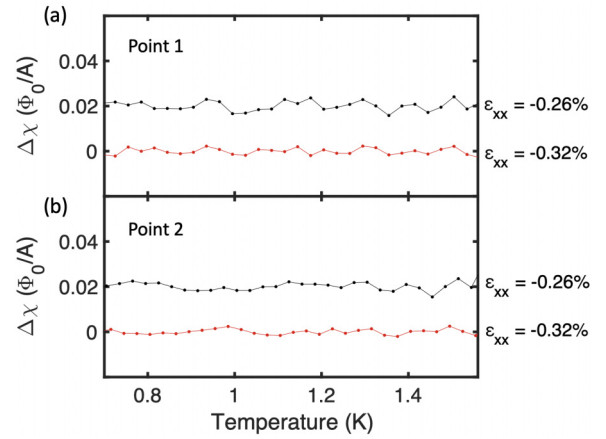


FIG. 5. Residuals of a fourth-order polynomial fit of the local susceptibility versus temperature data for applied strains of -0.26% (black) and -0.32% (red) over the temperature range 0.75–1.55 K. (a), (b) Results from data measured at points 1 and 2, respectively, as indicated in Fig. 3(a). For clarity, a vertical offset of 0.02 Φ_0/A was added to the -0.26% strain data.

[Figs. 3(e)–3(h)], the onset of diamagnetic screening over the local measurement volume ($\sim 10 \mu\text{m}^3$) is rounded by less than 50 mK [Figs. 4(a)–4(b)]. Therefore, our experimental detection limit of a second transition is less constrained by transition broadening under compression as compared to bulk measurements.

None of the curves under compression show an obvious anomaly in the susceptibility below the initial onset of Meissner screening. To analyze the data with greater sensitivity, we average the data into bins of width $\Delta T = 30$ mK and subtract a fourth-order polynomial fit over the temperature range $T = 0.75$ –1.55 K. Figure 5 shows the residuals, $\Delta\chi$, after subtracting the polynomial fit for the data sets measured at the two highest applied strains of -0.26% and -0.32% . These curves show no evidence of a second transition. The rapidly increasing slope of $\chi(T)$ approaching T_c (Fig. 4), which reflects the fact that $\lambda(T)$ diverges near T_c , makes it difficult to extend this analysis to $T > 1.55$ K. Analysis of our experimental resolution (see Appendix A) suggests that if there is a second transition over this temperature range, the change it induces in the $T \rightarrow 0$ superfluid density is at most $\approx 1\%$.

Our results, together with the nonobservation of a second transition in heat capacity [35], strongly suggest that there is no second transition under strain of the superconducting order parameter over the temperature range indicated by μ SR measurements. The mechanism of the TRSB observed in Sr_2RuO_4 is still unclear. We note that previous scanning SQUID magnetometry measurements on Sr_2RuO_4 [47,48] as well as the candidate chiral d -wave superconductor URu_2Si_2 [49] did not observe the spontaneous magnetization that would be expected for chiral superconductivity. Although Meissner screening and surface effects may suppress this spontaneous magnetization [49], the present results lend additional support to a hypothesis that the TRSB observed in Sr_2RuO_4 represents a separate transition that is not related to superconductivity or a transition that is essentially confined to defected areas of the sample [50].

Another possibility is that the TRSB is related to the bulk superconductivity but causes a negligibly small or even zero anomaly in the superfluid density. Intuitively, if the two components share a similar momentum structure over the Fermi surface, then the anomaly in superfluid density at the second transition may be suppressed. The possibility of a vanishingly small anomaly at the second transition is further discussed in Ref. [40].

A nonobservation of a second transition in the superfluid density, taken by itself, is most easily explained by a single-component order parameter. The elastocaloric measurements have recently been interpreted as ruling out any order parameter with vertical line nodes at the Van Hove lines [51]. Among the one-dimensional representations (see Table I), this result allows only for s -wave or $d_{x^2-y^2}$ -wave pairing. Evidence for vertical line nodes from scanning tunneling microscopy support the hypothesis of single-component $d_{x^2-y^2}$ -wave pairing [24]. However, a single-component order parameter would require reinterpretation of the experimental evidence for TRSB and both ultrasound measurements that suggested a two-component order parameter. A possible explanation put forward in Ref. [50] is a $d_{x^2-y^2}$ -wave order parameter, in which an inhomogeneous second order parameter is induced locally around sample dislocations.

IV. CONCLUSION

In summary, we measured the temperature dependence of the magnetic susceptibility of Sr_2RuO_4 under uniaxial strain using scanning SQUID microscopy. By using a local probe with a measurement volume of $\sim 10 \mu\text{m}^3$, we resolve sharp superconducting transitions that remain sharp ($\Delta T_c < 50 \text{ mK}$) up to our highest applied strain. As a result, our experimental detection limit of a second transition is less constrained by transition broadening due to strain inhomogeneity than bulk measurements. Our results show no evidence of a strain-induced splitting of a two-component order parameter. We place an upper limit of less than 1% on the change in the $T \rightarrow 0$ superfluid density due to a second-order parameter with a transition in the temperature range suggested by μSR data, suggesting that such a transition does not occur. This result provides further constraints on theories of a two-component order parameter in Sr_2RuO_4 .

ACKNOWLEDGMENTS

This work is supported by the Department of Energy, Office of Basic Energy Sciences, Division of Materials Sciences and Engineering, under Contract No. DE-AC02-76SF00515. Y.M. was supported by JSPS KAKENHI (Grant No. JP22H01168).

APPENDIX A: EXPERIMENTAL LIMIT ON THE DETECTION OF A SECOND TRANSITION IN SUSCEPTIBILITY

Our SQUID susceptometers are sensitive to changes in the London penetration depth, λ . Therefore, our experiment will not resolve a second transition, $T_{c,2}$, if the signature in λ associated with $T_{c,2}$ is smaller than our experimental resolution.

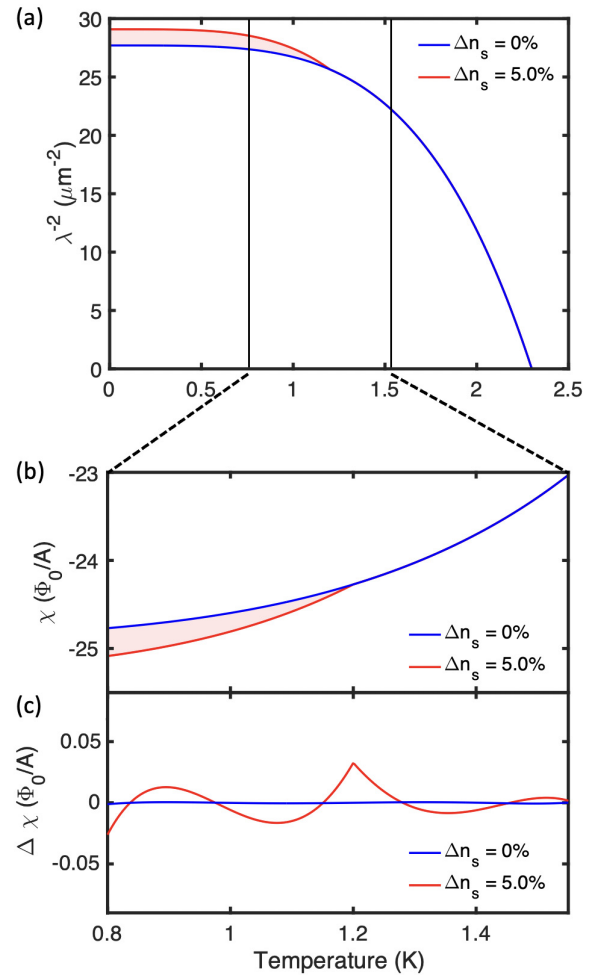


FIG. 6. Model of second transition in susceptibility. (a) Superfluid density versus temperature for a single superconducting transition (blue curve) and a double transition (red dashed curve). (b) Modeled susceptibility for a single transition (blue curve) and for a double transition over the temperature range near $T_{c,2}$. (c) Residuals of fourth-order polynomial fit for single transition (blue curve) and double transition (red curve).

Here, we estimate our experimental resolution and thereby place an upper limit on an anomaly in the superfluid density.

We start with a phenomenological two-fluid model in which the superfluid density is given by [52]

$$\frac{\lambda(0)^2}{\lambda^2(T)} = \left(1 - \frac{T^4}{T_{c,1}^4}\right) + \Delta n_s \left(1 - \frac{T^4}{T_{c,2}^4}\right), \quad (\text{A1})$$

where $T_{c,1}$ and $T_{c,2}$ correspond to the upper and lower superconducting transitions, respectively, and Δn_s corresponds to the change in the $T \rightarrow 0$ superfluid density due to the presence of the second component as a fraction of that from the first component alone.

Figure 6(a) shows the temperature dependence of the superfluid density, $\lambda^{-2}(T)$, for the model scenario of a single superconducting transition (blue curve) at $T_{c,1} = 2.3 \text{ K}$. The red curve shows the scenario with a second transition at $T_{c,2} = 1.2 \text{ K}$, which adds $\Delta n_s = 5\%$ to the $T = 0 \text{ K}$ superfluid density. In this model, we set $\lambda(0) = 190 \text{ nm}$ [53]. The second

transition at $T_{c,2}$ produces a kink in the superfluid density as a function of temperature which is highlighted by the pink shaded area of Fig. 6(a).

We next approximate the response of our SQUID susceptibility measurement resulting from this kink in the superfluid density at $T_{c,2}$. The dependence of χ on the local London penetration depth has been modeled for our SQUID susceptometers, which approximates the pickup loop-field coil as thin circular wires [54]. In the limit in which $\lambda \ll r, z$, where r is the radius of the field coil and z is the separation between the sample and field coil, the relation between λ and χ can be modeled by

$$\lambda = \frac{r}{2} \left(\frac{1}{\bar{\chi}^{2/3}} - 1 \right)^{1/2} - z. \quad (\text{A2})$$

Here, $\bar{\chi} = \chi/\chi_0$, where χ_0 is the mutual inductance of the field coil-pickup loop pair in the absence of a magnetically responsive sample and is experimentally determined to be $\chi_0 \approx 170 \Phi_0/A$. In this model, we use the temperature dependence of λ given by Eq. (A1) and we set the following parameters: $r = 800$ nm and $z = 450$ nm. Figure 6(b) shows the modeled susceptibility versus temperature curves over the temperature range $T = 0.8$ – 1.55 K for the single transition (blue curve) and double transition (red curve) scenarios from Fig. 6(a). The pink shaded area represents the extra signal in χ resulting from the increase in superfluid density at the second transition $T_{c,2} = 1.2$ K. We note this model is approximate as the field coil has a noncircular shape. Nevertheless, our experimentally observed magnitude of χ over this temperature range is well approximated by this model for a reasonable choice of the parameters $\lambda(0)$, r , and z . Figure 6(c) shows the residuals, $\Delta\chi$, after subtracting a fourth-order polynomial fit to the curves in Fig. 6(b). For the case of a single transition (blue curve), $\Delta\chi$ remains nearly zero over the temperature range shown while a double transition (red curve) causes a sharp cusp at $T_{c,2}$.

We add the extra susceptibility signal modeled for a second transition [pink shaded region in Fig. 6(b)] to our raw data and determine at which value of Δn_s the cusp at $T_{c,2}$ is no longer visible in a plot of the residuals, $\Delta\chi$, versus temperature (Fig. 7). For comparison, the open circles in Fig. 7 show $\Delta\chi$ with no second transition added and are identical to the data shown in Fig. 5(b). For $\Delta n_s = 2.0\%$ [Fig. 7(a)], a cusp at $T_{c,2} = 1.2$ K is clearly visible. In our judgment, a cusp is still visible with $\Delta n_s = 1.0\%$ [Fig. 7(b)], but is no longer visible for $\Delta n_s = 0.5\%$ or lower [Figs. 7(c) and 7(d)]. Therefore, our results rule out any second transition below T_c that contributes more than 1% of the zero temperature superfluid density.

APPENDIX B: FINITE ELEMENT STRAIN SIMULATION

Achieving high strain homogeneity is a significant challenge in uniaxial pressure experiments. The asymmetric mounting geometry in which one face of the sample is bonded at each end to titanium sample plates offers uninhibited access to the top face of the sample, but has been shown to cause sample bending and result in a high strain gradient in the sample when stress is applied [42]. To reduce this bending, our sample plates include titanium flexures that resist bending with minimal attenuation of the applied stress. Here, we present results of finite element simulations and compare the

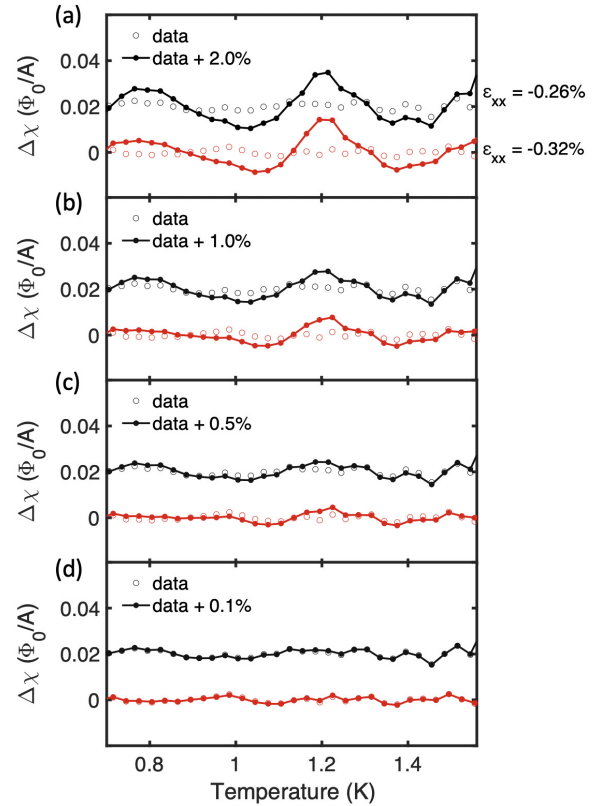


FIG. 7. Modeled signature of a second transition in susceptibility for varying amplitudes of Δn_s . (a)–(d) Plot of residuals, $\Delta\chi$, versus temperature after a model of a second transition was added to the raw data measured at point 2 with $T_{c,2} = 1.2$ K and magnitude (a) $\Delta n_s = 2.0\%$, (b) $\Delta n_s = 1.0\%$, (c) $\Delta n_s = 0.5\%$, and (d) $\Delta n_s = 0.1\%$. Residuals with no second transition added (open circles) are shown for comparison. Results from data set taken at applied strain of -0.26% (-0.32%) are shown in black (red). Curves at different strain values are offset vertically for clarity.

strain inhomogeneity induced in the sample when bonded to sample plates with and without the titanium flexures.

Figure 8(a) shows a schematic of the model used in the analysis and Fig. 8(b) shows a zoomed-in view of the setup around the sample and flexures. The bottom face of the sample is bonded to the titanium sample plates and flexures with a thin layer of epoxy. For simplicity, we assume both the sample and epoxy to be isotropic with a Poisson's ratio of 0.3. For Sr_2RuO_4 , we used a Young's modulus of 176 GPa [55]. The elastic properties of Masterbond EP29LPSP have not been measured in the temperature range of our experiment. We therefore choose to set the Young's modulus of the epoxy to be 15 GPa, which is consistent with previous studies using the low elastic epoxy Stycast 2850 [32,42]. The sample thickness was taken to be $t = 70$ μm . The strained length of the sample was $L = 1.6$ mm. The stress is transferred to the sample via shear stresses in the epoxy layer. Typically, an epoxy thickness of a few tens of μm is desired to avoid failure of the epoxy due to buildup of shear stresses in the epoxy layer [42]. While preparing the sample on the strain cell for the experiment, 19- μm -diameter nylon wires were placed between the sample and the titanium sample plate to ensure sufficient epoxy thickness.

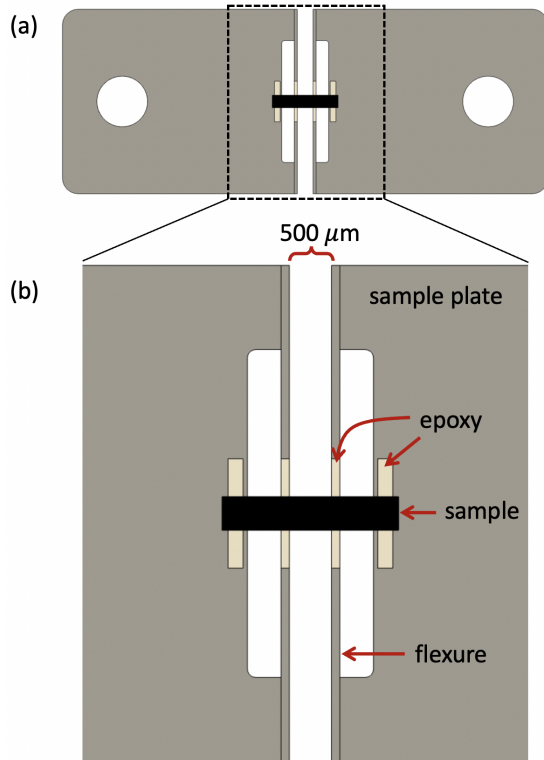


FIG. 8. Sample mounting setup. (a) Top view of the model used in the finite element stress analysis. (b) Zoomed-in view around the sample and titanium flexures.

Therefore, we set the epoxy thickness to be $20\ \mu\text{m}$ in our model.

Figure 9(a) shows the simulated ϵ_{xx} strain in the system for a displacement of the movable sample plates from the zero strain position of 0.6% of L . Deformation of the titanium flexures occurs as the sample is compressed. Figure 9(b) shows the ϵ_{xx} strain for a cross section along the length of the sample. We note that as the sample plates are displaced, the load applied to the sample through the epoxy is transferred over a nonzero length scale which depends on parameters such as the thickness or Young's modulus of the epoxy. This load transfer length increases the effective strained length of the sample and, as a result, the actual strain in the sample is lower than 0.6% . Slight buckling of the sample can be seen in the region near where the sample is epoxied to the sample plates. For comparison, Fig. 9(c) shows the simulation results for the scenario with the titanium flexures removed. For the same displacement of the sample plates, the setup without the flexures increases the sample bending. With the flexures, the strain at the top surface of the sample is 20% higher than it would be without, due to the reduced bending.

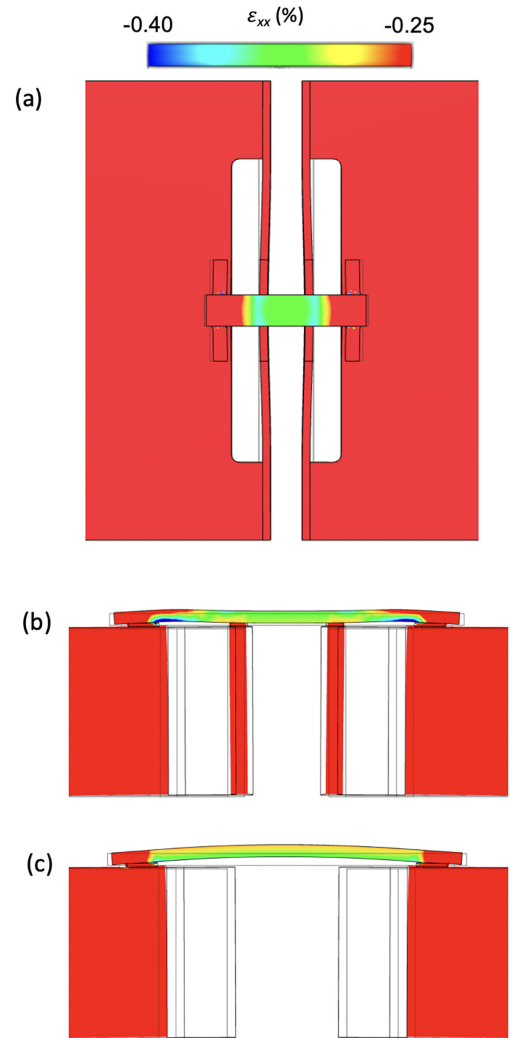


FIG. 9. Finite element strain simulations of the sample under compression. (a) Simulated ϵ_{xx} for the model with flexures viewed from above the sample. (b) Side view cross section of the simulation shown in (a), cut along the length of the sample. (c) Simulated ϵ_{xx} for the model without flexures. Deformation in all figures is exaggerated by a factor of 10. Finite element simulations were performed using Autodesk Fusion 360.

From these strain simulations, we can also estimate the magnitude of the bending-induced strain variation over the volume probed by our SQUID susceptometer. The difference in strain between the upper and lower surfaces in Fig. 9(b) is $\Delta\epsilon_{xx} = 2 \times 10^{-4}$. Our measurement is sensitive to length scales of order the diameter of the field coil, $D \sim 1\ \mu\text{m}$, or $\sim 1\%$ of the sample thickness. We estimate a strain gradient over our measurement volume of $(D/t)\Delta\epsilon_{xx} \approx 2 \times 10^{-6}$, which highlights the advantage of our local probe technique.

[1] V. Grinenko, S. Ghosh, R. Sarkar, J. C. Orain, A. Nikitin, M. Elender, D. Das, Z. Guguchia, F. Brückner, M. E. Barber, J. Park, N. Kikugawa, D. A. Sokolov, J. S. Bobowski, T. Miyoshi, Y. Maeno, A. P. Mackenzie, H. Luetkens, C. W. Hicks, and H. H. Klauss, Split superconducting and time-reversal

symmetry-breaking transitions in Sr_2RuO_4 under stress, *Nat. Phys.* **17**, 748 (2021).

[2] Y. Maeno, T. M. Rice, and M. Sigrist, The intriguing superconductivity of strontium ruthenate, *Phys. Today* **54**, 42 (2001).

- [3] A. P. Mackenzie, R. K. W. Haselwimmer, A. W. Tyler, G. G. Lonzarich, Y. Mori, S. Nishizaki, and Y. Maeno, Extremely Strong Dependence of Superconductivity on Disorder in Sr_2RuO_4 , *Phys. Rev. Lett.* **80**, 161 (1998).
- [4] A. Mackenzie, A personal perspective on the unconventional superconductivity of Sr_2RuO_4 , *J. Supercond. Novel Mag.* **33**, 177 (2020).
- [5] A. P. Mackenzie and Y. Maeno, The superconductivity of Sr_2RuO_4 and the physics of spin-triplet pairing, *Rev. Mod. Phys.* **75**, 657 (2003).
- [6] Y. Liu and Z.-Q. Mao, Unconventional superconductivity in Sr_2RuO_4 , *Physica C* **514**, 339 (2015).
- [7] Y. Maeno, H. Hashimoto, K. Yoshida, S. Nishizaki, T. Fujita, J. Bednorz, and F. Lichtenberg, Superconductivity in a layered perovskite without copper, *Nature (London)* **372**, 532 (1994).
- [8] A. J. Leggett and Y. Liu, Symmetry properties of superconducting order parameter in Sr_2RuO_4 , *J. Supercond. Novel Mag.* **34**, 1647 (2021).
- [9] A. P. Mackenzie, T. Scaffidi, C. W. Hicks, and Y. Maeno, Even odder after twenty-three years: The superconducting order parameter puzzle of Sr_2RuO_4 , *npj Quantum Mater.* **2**, 1 (2017).
- [10] A. Chronister, A. Pustogow, N. Kikugawa, D. A. Sokolov, F. Jerzembeck, C. W. Hicks, A. P. Mackenzie, E. D. Bauer, and S. E. Brown, Evidence for even parity unconventional superconductivity in Sr_2RuO_4 , *Proc. Natl. Acad. Sci. USA* **118**, e2025313118 (2021).
- [11] A. Pustogow, Y. Luo, A. Chronister, Y. S. Su, D. A. Sokolov, F. Jerzembeck, A. P. Mackenzie, C. W. Hicks, N. Kikugawa, S. Raghu, E. D. Bauer, and S. E. Brown, Constraints on the superconducting order parameter in Sr_2RuO_4 from oxygen-17 nuclear magnetic resonance, *Nature (London)* **574**, 72 (2019).
- [12] K. Ishida, M. Manago, K. Kinjo, and Y. Maeno, Reduction of the ^{17}O knight shift in the superconducting state and the heat-up effect by NMR pulses on Sr_2RuO_4 , *J. Phys. Soc. Jpn.* **89**, 034712 (2020).
- [13] G. M. Luke, Y. Fudamoto, K. M. Kojima, M. I. Larkin, J. Merrin, B. Nachumi, Y. J. Uemura, Y. Maeno, Z. Q. Mao, Y. Mori, H. Nakamura, and M. Sigrist, Time-reversal symmetry-breaking superconductivity in Sr_2RuO_4 , *Nature (London)* **394**, 558 (1998).
- [14] V. Grinenko, D. Das, R. Gupta, B. Zinkl, N. Kikugawa, Y. Maeno, C. W. Hicks, H.-H. Klauss, M. Sigrist, and R. Khasanov, Unsplit superconducting and time reversal symmetry breaking transitions in Sr_2RuO_4 under hydrostatic pressure and disorder, *Nat. Commun.* **12**, 3920 (2021).
- [15] V. Grinenko, R. Sarkar, S. Ghosh, D. Das, Z. Guguchia, H. Luetkens, I. Shipulin, A. Ramires, N. Kikugawa, Y. Maeno, K. Ishida, C. W. Hicks, and H.-H. Klauss, μSR measurements on Sr_2RuO_4 under (110) uniaxial stress, *Phys. Rev. B* **107**, 024508 (2023).
- [16] J. Xia, Y. Maeno, P. T. Beyersdorf, M. M. Fejer, and A. Kapitulnik, High Resolution Polar Kerr Effect Measurements of Sr_2RuO_4 : Evidence for Broken Time-Reversal Symmetry in the Superconducting State, *Phys. Rev. Lett.* **97**, 167002 (2006).
- [17] M. Anwar, T. Nakamura, S. Yonezawa, M. Yakabe, R. Ishiguro, H. Takayanagi, and Y. Maeno, Anomalous switching in Nb/Ru/ Sr_2RuO_4 topological junctions by chiral domain wall motion, *Sci. Rep.* **3**, 2480 (2013).
- [18] T. Nakamura, T. Sumi, S. Yonezawa, T. Terashima, M. Sigrist, H. Kaneyasu, and Y. Maeno, Essential configuration of Pb/Ru/ Sr_2RuO_4 junctions exhibiting anomalous superconducting interference, *J. Phys. Soc. Jpn.* **81**, 064708 (2012).
- [19] S. Ghosh, A. Shekhter, F. Jerzembeck, N. Kikugawa, D. A. Sokolov, M. Brando, A. Mackenzie, C. W. Hicks, and B. Ramshaw, Thermodynamic evidence for a two-component superconducting order parameter in Sr_2RuO_4 , *Nat. Phys.* **17**, 199 (2021).
- [20] S. Benhabib, C. Lupien, I. Paul, L. Berges, M. Dion, M. Nardone, A. Zitouni, Z. Q. Mao, Y. Maeno, A. Georges, L. Taillefer, and C. Proust, Ultrasound evidence for a two-component superconducting order parameter in Sr_2RuO_4 , *Nat. Phys.* **17**, 194 (2021).
- [21] H. G. Suh, H. Menke, P. M. R. Brydon, C. Timm, A. Ramires, and D. F. Agterberg, Stabilizing even-parity chiral superconductivity in Sr_2RuO_4 , *Phys. Rev. Res.* **2**, 032023(R) (2020).
- [22] J. Clepkens, A. W. Lindquist, X. Liu, and H.-Y. Kee, Higher angular momentum pairings in interorbital shadowed-triplet superconductors: Application to Sr_2RuO_4 , *Phys. Rev. B* **104**, 104512 (2021).
- [23] E. Hassinger, P. Bourgeois-Hope, H. Taniguchi, S. R. de Cotret, G. Grissonnanche, M. S. Anwar, Y. Maeno, N. Doiron-Leyraud, and L. Taillefer, Vertical Line Nodes in the Superconducting Gap Structure of Sr_2RuO_4 , *Phys. Rev. X* **7**, 011032 (2017).
- [24] R. Sharma, S. D. Edkins, Z. Wang, A. Kostin, C. Sow, Y. Maeno, A. P. Mackenzie, J. S. Davis, and V. Madhavan, Momentum-resolved superconducting energy gaps of Sr_2RuO_4 from quasiparticle interference imaging, *Proc. Natl. Acad. Sci. USA* **117**, 5222 (2020).
- [25] S. A. Kivelson, A. C. Yuan, B. Ramshaw, and R. Thomale, A proposal for reconciling diverse experiments on the superconducting state in Sr_2RuO_4 , *npj Quantum Mater.* **5**, 1 (2020).
- [26] X. Wang, Z. Wang, and C. Kallin, Higher angular momentum pairing states in Sr_2RuO_4 in the presence of longer-range interactions, *Phys. Rev. B* **106**, 134512 (2022).
- [27] Y. Sheng, Y. Li, and Y.-F. Yang, Multipole-fluctuation pairing mechanism of $d_{x^2-y^2} + ig$ superconductivity in Sr_2RuO_4 , *Phys. Rev. B* **106**, 054516 (2022).
- [28] A. T. Rømer, P. J. Hirschfeld, and B. M. Andersen, Superconducting state of Sr_2RuO_4 in the presence of longer-range coulomb interactions, *Phys. Rev. B* **104**, 064507 (2021).
- [29] J. Clepkens, A. W. Lindquist, and H.-Y. Kee, Shadowed triplet pairings in Hund's metals with spin-orbit coupling, *Phys. Rev. Res.* **3**, 013001 (2021).
- [30] A. T. Rømer, D. D. Scherer, I. M. Eremin, P. J. Hirschfeld, and B. M. Andersen, Knight Shift and Leading Superconducting Instability from Spin Fluctuations in Sr_2RuO_4 , *Phys. Rev. Lett.* **123**, 247001 (2019).
- [31] M. Sigrist and K. Ueda, Phenomenological theory of unconventional superconductivity, *Rev. Mod. Phys.* **63**, 239 (1991).
- [32] C. W. Hicks, D. O. Brodsky, E. A. Yelland, A. S. Gibbs, J. A. N. Bruin, M. E. Barber, S. D. Edkins, K. Nishimura, S. Yonezawa, Y. Maeno, A. P. Mackenzie, B. Baghi, C. W. Hicks, D. Brodsky, and A. Edward, Strong increase of T_c of Sr_2RuO_4 under both tensile and compressive strain, *Science* **344**, 283 (2014).
- [33] A. Steppke, L. Zhao, M. E. Barber, T. Scaffidi, F. Jerzembeck, H. Rosner, A. S. Gibbs, Y. Maeno, S. H. Simon, A. P. Mackenzie, and C. W. Hicks, Strong peak in T_c of Sr_2RuO_4 under uniaxial pressure, *Science* **355**, eaaf9398 (2017).
- [34] C. A. Watson, A. S. Gibbs, A. P. Mackenzie, C. W. Hicks, and K. A. Moler, Micron-scale measurements of low anisotropic

- strain response of local T_c in Sr_2RuO_4 , *Phys. Rev. B* **98**, 094521 (2018).
- [35] Y.-S. Li, N. Kikugawa, D. A. Sokolov, F. Jerzembeck, A. S. Gibbs, Y. Maeno, C. W. Hicks, J. Schmalian, M. Nicklas, and A. P. Mackenzie, High-sensitivity heat-capacity measurements on Sr_2RuO_4 under uniaxial pressure, *Proc. Natl. Acad. Sci. USA* **118**, e2020492118 (2021).
- [36] Y.-S. Li, M. Garst, J. Schmalian, S. Ghosh, N. Kikugawa, D. A. Sokolov, C. W. Hicks, F. Jerzembeck, M. S. Ikeda, Z. Hu *et al.*, Elastocaloric determination of the phase diagram of Sr_2RuO_4 , *Nature (London)* **607**, 276 (2022).
- [37] P. J. C. Signore, B. Andraka, M. W. Meisel, S. E. Brown, Z. Fisk, A. L. Giorgi, J. L. Smith, F. Gross-Alltag, E. A. Schuberth, and A. A. Menovsky, Inductive measurements of UPt_3 in the superconducting state, *Phys. Rev. B* **52**, 4446 (1995).
- [38] S. Schöttl, E. A. Schuberth, J. B. Kycia, and W. P. Halperin, Magnetic study of the UPt_3 superconducting phases, *Phys. B: Condens. Matter* **280**, 174 (2000).
- [39] G. Bruls, D. Weber, B. Wolf, P. Thalmeier, B. Lüthi, A. de Visser, and A. Menovsky, Strain–order–Parameter Coupling and Phase Diagrams in Superconducting UPt_3 , *Phys. Rev. Lett.* **65**, 2294 (1990).
- [40] H. S. Røising, G. Wagner, M. Roig, A. T. Rømer, and B. M. Andersen, Heat capacity double transitions in time-reversal symmetry broken superconductors, *Phys. Rev. B* **106**, 174518 (2022).
- [41] J. R. Kirtley, L. Paulius, A. J. Rosenberg, J. C. Palmstrom, C. M. Holland, E. M. Spanton, D. Schiessl, C. L. Jermain, J. Gibbons, Y. K. Fung, M. E. Huber, D. C. Ralph, M. B. Ketchen, G. W. Gibson, and K. A. Moler, Scanning SQUID susceptometers with sub-micron spatial resolution, *Rev. Sci. Instrum.* **87**, 093702 (2016).
- [42] C. W. Hicks, M. E. Barber, S. D. Edkins, D. O. Brodsky, and A. P. Mackenzie, Piezoelectric-based apparatus for strain tuning, *Rev. Sci. Instrum.* **85**, 065003 (2014).
- [43] M. E. Barber, A. S. Gibbs, Y. Maeno, A. P. Mackenzie, and C. W. Hicks, Resistivity in the Vicinity of a Van Hove Singularity: Sr_2RuO_4 Under Uniaxial Pressure, *Phys. Rev. Lett.* **120**, 076602 (2018).
- [44] Y. Maeno, T. Ando, Y. Mori, E. Ohmichi, S. Ikeda, S. NishiZaki, and S. Nakatsuji, Enhancement of Superconductivity of Sr_2RuO_4 to 3 K by Embedded Metallic Microdomains, *Phys. Rev. Lett.* **81**, 3765 (1998).
- [45] S. Kittaka, T. Nakamura, H. Yaguchi, S. Yonezawa, and Y. Maeno, Spatial development of superconductivity in the Sr_2RuO_4 –Ru eutectic system, *J. Phys. Soc. Jpn.* **78**, 064703 (2009).
- [46] In our measurement, there is a trade-off when choosing I_{fc} . A large I_{fc} provides a greater signal-to-noise ratio and hence greater sensitivity. However, a large I_{fc} may also make any second transition difficult to resolve in our measurement because the local field from the field coil can influence the stability of a second-order parameter, causing the second transition to be smeared out in temperature around $T_{c,2}$ or suppressed altogether. For this reason, at both points 1 and 2, we performed measurements with a large I_{fc} (for high sensitivity) and small I_{fc} (for low field at the sample).
- [47] C. W. Hicks, J. R. Kirtley, T. M. Lippman, N. C. Koshnick, M. E. Huber, Y. Maeno, W. M. Yuhasz, M. B. Maple, and K. A. Moler, Limits on superconductivity-related magnetization in Sr_2RuO_4 and $\text{PrOs}_4\text{Sb}_{12}$ from scanning SQUID microscopy, *Phys. Rev. B* **81**, 214501 (2010).
- [48] J. R. Kirtley, C. Kallin, C. W. Hicks, E.-A. Kim, Y. Liu, K. A. Moler, Y. Maeno, and K. D. Nelson, Upper limit on spontaneous supercurrents in Sr_2RuO_4 , *Phys. Rev. B* **76**, 014526 (2007).
- [49] Y. Iguchi, I. P. Zhang, E. D. Bauer, F. Ronning, J. R. Kirtley, and K. A. Moler, Local observation of linear- T superfluid density and anomalous vortex dynamics in URu_2Si_2 , *Phys. Rev. B* **103**, L220503 (2021).
- [50] R. Willa, M. Hecker, R. M. Fernandes, and J. Schmalian, Inhomogeneous time-reversal symmetry breaking in Sr_2RuO_4 , *Phys. Rev. B* **104**, 024511 (2021).
- [51] G. Palle, C. Hicks, R. Valentí, Z. Hu, Y.-S. Li, A. Rost, M. Nicklas, A. P. Mackenzie, and J. Schmalian, Constraints on the superconducting state of Sr_2RuO_4 from elastocaloric measurements, *Phys. Rev. B* **108**, 094516 (2023).
- [52] The two-fluid model can alternatively be expressed with a prefactor of $(1 - \Delta n_s)$ on the $T_{c,1}$ term such that the superfluid density is independent of Δn_s at $T = 0$ K. For clarity, we chose a modified form for the two-fluid model to explicitly indicate the extra zero temperature superfluid density added by the second transition. The choice of the two-fluid model does not significantly impact the results of the analysis.
- [53] I. Bonalde, B. D. Yanoff, M. B. Salamon, D. J. Van Harlingen, E. M. E. Chia, Z. Q. Mao, and Y. Maeno, Temperature Dependence of the Penetration Depth in Sr_2RuO_4 : Evidence for Nodes in the Gap Function, *Phys. Rev. Lett.* **85**, 4775 (2000).
- [54] J. R. Kirtley, B. Kalisky, J. A. Bert, C. Bell, M. Kim, Y. Hikita, H. Y. Hwang, J. H. Ngai, Y. Segal, F. J. Walker, C. H. Ahn, and K. A. Moler, Scanning SQUID susceptometry of a paramagnetic superconductor, *Phys. Rev. B* **85**, 224518 (2012).
- [55] J. Paglione, C. Lupien, W. A. MacFarlane, J. M. Perz, L. Taillefer, Z. Q. Mao, and Y. Maeno, Elastic tensor of Sr_2RuO_4 , *Phys. Rev. B* **65**, 220506 (2002).