


Electronic structure and magnetism in infinite-layer nickelates $R\text{NiO}_2$ ($R = \text{La-Lu}$)

Jesse Kapeghian and Antia S. Botana*

Department of Physics, Arizona State University, Tempe, Arizona 85287, USA (Received 15 July 2020; revised 2 October 2020; accepted 28 October 2020; published 24 November 2020)

Using first-principles calculations, we analyze the evolution of the electronic structure and magnetic properties of infinite-layer nickelates $R\text{NiO}_2$ ($R = \text{rare earth}$) as R changes across the lanthanide series from La to Lu. By correlating these changes with in-plane and out-of-plane lattice parameter reductions, we conclude that the in-plane Ni-O distance is the relevant control parameter in infinite-layer nickelates. An antiferromagnetic ground state is obtained for all $R\text{NiO}_2$ ($R = \text{La-Lu}$). This antiferromagnetic state remains metallic across the lanthanide series and is defined by a multi-orbital picture with low-energy relevance of a flat Ni- d_{z^2} band pinned at the Fermi level, in contrast with cuprates. Other non-cuprate-like properties such as the involvement of R - d bands at the Fermi level and a large charge-transfer energy are robust for all $R\text{NiO}_2$ materials.

DOI: [10.1103/PhysRevB.102.205130](https://doi.org/10.1103/PhysRevB.102.205130)**I. INTRODUCTION**

The collection of characteristics sought when looking for cuprate analogs includes a layered structure, proximity to a d^9 ($S = 1/2$) configuration analog to Cu^{2+} , $d_{x^2-y^2}$ states as the active orbitals, antiferromagnetic correlations, and strong p - d hybridization [1]. Perovskite $R\text{NiO}_3$ -based heterostructures ($R = \text{rare earth}$) have been intensively studied over the last decade, motivated by predictions of superconductivity based on their analogies to cuprates [2–6]. A plethora of new phenomena have been discovered in these systems, due to the interplay of epitaxial strain, quantum confinement, and interfacial effects. However, the promise of $R\text{NiO}_3$ -based heterostructures for superconductivity is yet to be realized [4,6].

In this regard, one alternative to heterostructures based on perovskite phases are low-valence layered nickelates $R_{n+1}\text{Ni}_n\text{O}_{2n+2}$ ($n = 2, 3, \dots, \infty$), closer to cuprates in terms of their structure (with infinite NiO_2 planes) as well as in terms of electron count (close to d^9) [7–10]. The realization of this promise came with the recent report of the first superconducting nickelate: hole-doped NdNiO_2 [11–13]. $R\text{NiO}_2$ (112) materials are the infinite-layer members of the series and realize the hard to stabilize Ni^{1+} oxidation state, isoelectronic with Cu^{2+} [14]. These materials are derived via oxygen reduction from the corresponding perovskite phase $R\text{NiO}_3$ (113) [15–19]. To date, only the Nd and La variants of 112 materials have been realized in bulk form [15–19]. However, parent perovskite 113 phases exist for $R = \text{Lu-La}$, and their phase diagram is well established [5]. Except for $R = \text{La}$, all rare-earth perovskite 113 nickelates exhibit a metal-insulator phase transition (MIT), accompanied by a symmetry-lowering from orthorhombic to monoclinic [4,5]. At a temperature lower than T_{MIT} , they undergo an antiferromagnetic (AFM) phase transition. The evolution of these transitions can be correlated with structural changes upon a change in rare earth. In particular, the Goldschmidt tolerance factor (which serves

as a measurement of the tendency of the structure to distort) is often advocated in this regard— a decrease in tolerance factor with R tends to reduce the Ni-O-Ni angle with a subsequent reduction of the overlap between the Ni- d and O- p orbitals [5,6].

Exploiting the prospect that other perovskite nickelate 113 phases could be reduced to their respective 112 counterpart, we analyze here the electronic structure and magnetism of $R\text{NiO}_2$ materials ($R = \text{La-Lu}$). We correlate changes in R with modifications of the in-plane and out-of-plane lattice parameters in LaNiO_2 (the extreme member of the lanthanide series) and analyze the effects of these changes in their electronic and magnetic properties. We conclude that the Ni-O in-plane distance is the control parameter in $R\text{NiO}_2$ nickelates because modifications of the out-of-plane lattice parameter do not give rise to appreciable changes in the electronic structure. We find that all infinite-layer nickelates have an antiferromagnetic ground state from first principles, but this state is fundamentally different from that of cuprates because it is metallic and has Ni- d_{z^2} states as active orbitals (in addition to the naively expected $d_{x^2-y^2}$ ones).

II. COMPUTATIONAL DETAILS

We performed two separate sets of density-functional theory (DFT)-based calculations for $R\text{NiO}_2$ nickelates: (1) *Calculations with a different rare-earth ion.* We performed calculations for 112 compounds across the lanthanide series ($R = \text{La-Lu}$) using PAW pseudopotentials [20] as implemented in the VASP code [21,22] placing the R - $4f$ electrons in the core. We note that the role of $4f$ states in NdNiO_2 has been analyzed in the literature in connection to its normal and superconducting state properties [23]. It would be worth analyzing what aspects of the electronic structure and magnetic properties of $R\text{NiO}_2$ materials may be affected from the open $4f$ shell for other R ions, but we leave that for future work. (2) *Calculations for LaNiO_2 at different in-plane and out-of-plane lattice constants.* These calculations were performed by using the all-electron, full potential code WIEN2K [24,25] based on the augmented plane wave plus local orbitals (APW

*antia.botana@asu.edu

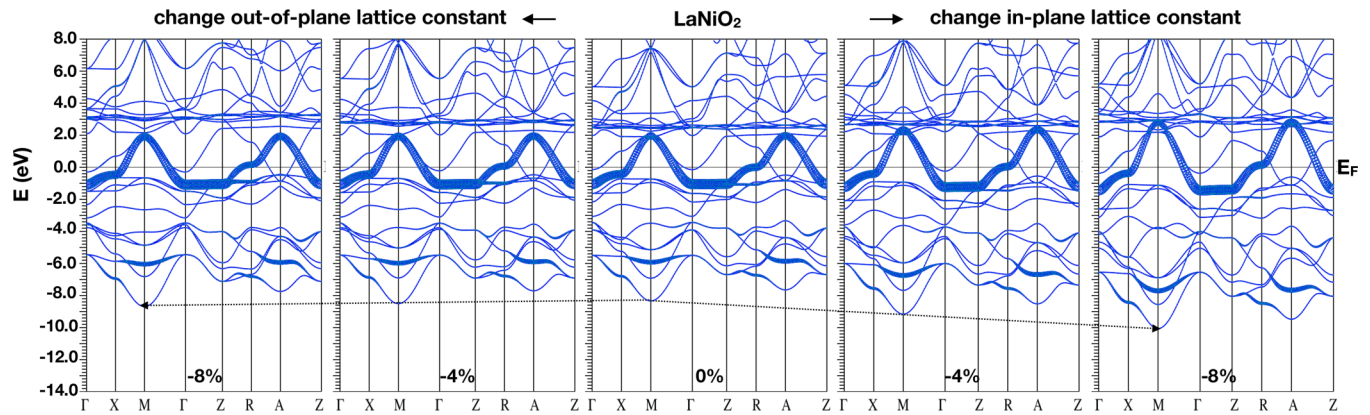


FIG. 1. GGA nonmagnetic LaNiO_2 band structure with band character plot ($\text{Ni-}d_{x^2-y^2}$ highlighted) at the experimental lattice constants (0%, central panel), upon reduction of in-plane (right panels) and out-of-plane (left panels) lattice parameters. The arrows are a guide to show the drastic changes in the band structure upon reducing the in-plane lattice constant in contrast with the negligible changes upon reducing the out-of-plane lattice constant. Figure 7 in the Appendix shows a zoomed-in version of the band structures around the Fermi level.

+ l_o) basis set keeping the La- $4f$ states present. As a starting point, the experimental LaNiO_2 lattice constants were used [16] ($a = 3.96 \text{ \AA}$, $c = 3.37 \text{ \AA}$). Using reduced lattice parameters in LaNiO_2 allows us to mimic the effect of a smaller R ion (the size of R decreases with increasing atomic number) and determine if the changes in electronic structure and magnetic properties upon R variation are linked mostly to the explicit R change, or to changes in in-plane (a) and/or out-of-plane (c) lattice constants.

The Perdew-Burke-Ernzerhof version of the generalized gradient approximation (GGA) [26] was used for both WIEN2K and VASP structural relaxations, and for nonmagnetic calculations. To properly account for correlation effects in the Ni- d electrons, an on-site Coulomb repulsion U was included in spin-polarized calculations, using the GGA + U method within the fully localized limit (FLL) [27]. For both VASP and WIEN2K GGA + U calculations, we used U values ranging from 1.4 to 6.4 eV. A nonzero value of Hund's coupling, $J = 0.7 \text{ eV}$, has been considered to account for the anisotropy of the interaction [28]. Different magnetic configurations were checked: (a) a ferromagnetic (FM) order, (b) a C-type AFM order for which a $\sqrt{2} \times \sqrt{2}$ cell was used, and (c) a G-type AFM order for which a $\sqrt{2} \times \sqrt{2} \times 2$ cell was constructed. Given that a C-type AFM order is more stable for LaNiO_2 at a reasonable U value for this metallic nickelate $\approx 4\text{--}5 \text{ eV}$ [29,30] (see Appendix Fig. 6), a C-type AFM order was adopted for the other $R112$ materials for a systematic comparison. We note that a C-type AFM order is also found to be the ground state in Ref. [31] using GGA + U with FLL as the double-counting correction.

In VASP, the wave functions were expanded in the plane-wave basis with a kinetic-energy cutoff of 500 eV. The reciprocal space integration was carried out with a $16 \times 16 \times 16$ Γ -centered k mesh for nonmagnetic calculations, and a $12 \times 12 \times 16$ Γ -centered k mesh for antiferromagnetic calculations. For all WIEN2K calculations, an RK_{max} of seven was used, as well as a k mesh of $20 \times 20 \times 23$ for nonmagnetic calculations and $18 \times 18 \times 30$ for antiferromagnetic calculations. The muffin-tin radii used in WIEN2K for LaNiO_2 are 2.50 \AA for La, 1.99 \AA for Ni, and 1.72 \AA for O.

III. RESULTS

A. Structural properties of $R\text{NiO}_2$

Experimentally reported $R\text{NiO}_2$ ($R = \text{La, Nd}$) nickelates have a tetragonal structure with $P4/mmm$ space group with $a = b \neq c$ [15,16]. The R, Ni, and O positions are (0.5, 0.5, 0.5), (0, 0, 0), and (0.5, 0, 0), respectively. Using

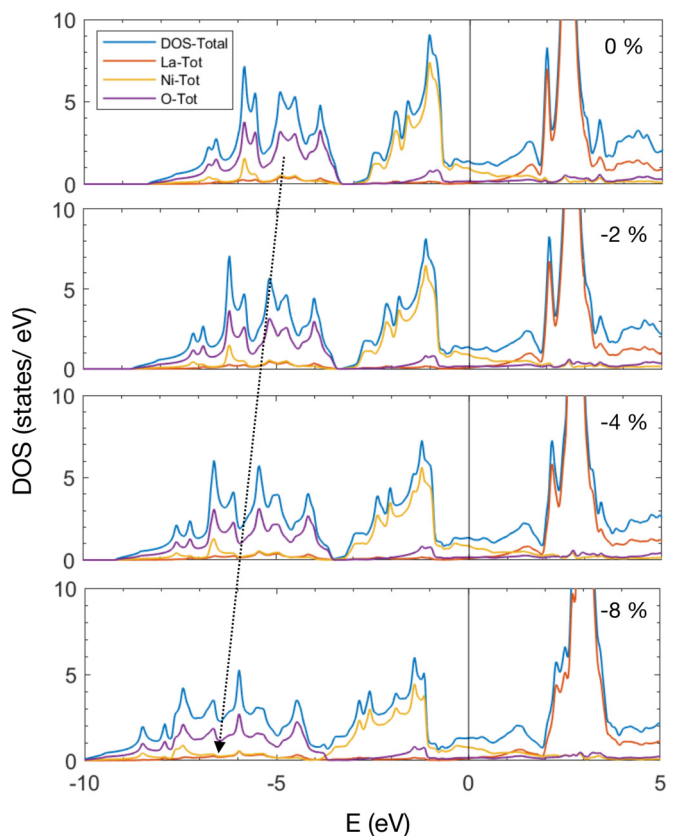


FIG. 2. Total, La, Ni, and O atom-resolved density of states for GGA nonmagnetic calculations in LaNiO_2 for decreasing in-plane lattice parameter with respect to the experimentally reported a value. For each plot, the out-of-plane lattice parameter c is held constant.

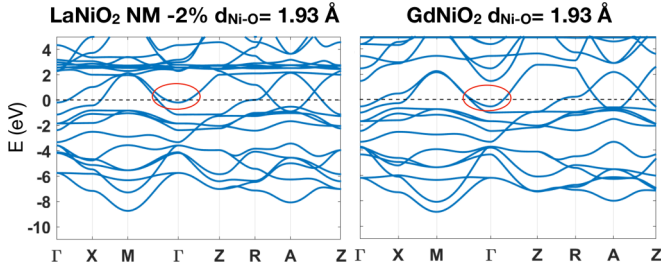


FIG. 3. GGA nonmagnetic band structure for LaNiO_2 with a 2.4% reduction of the in-plane lattice constant with respect to the experimental value (left), and GdNiO_2 (right). Both systems are compared because they have the same Ni-O in-plane distance. The red oval encloses the R - d electron pocket at Γ .

these data, we construct the structures for the hypothetical $R\text{NiO}_2$ materials whose lattice parameters were subsequently optimized for different R ions within the GGA in a $\sqrt{2} \times \sqrt{2}$ cell with C-type AFM order. The corresponding lattice constants are shown in Table I and are in agreement with those reported in Ref. [32]. Cerium was skipped due to its stable $4+$ oxidation state. As expected, the lattice parameters decrease as the size of the rare-earth atom decreases with increasing atomic number. The out-of-plane lattice constant c gets reduced by 10% across the lanthanide series from La to Lu, the in-plane lattice constant a by $\approx 4\%$. We note that the Ni-O in-plane distance corresponds to $a/2$. The R -O distances are in agreement with the sum of ionic radii for the corresponding R^{3+} ion and O^{2-} in eightfold coordination [33].

B. Nonmagnetic electronic structure

We first investigate the evolution of the nonmagnetic (NM) electronic structure of LaNiO_2 for independent in-plane and out-of-plane lattice-constant reductions and then correlate these with the change in R across the lanthanide series. Figure 1 shows the nonmagnetic band structure for LaNiO_2 at the experimental lattice parameters compared with that at 4% and 8% reduction of in-plane (right) and out-of-plane (left)

TABLE I. In-plane (a) and out-of-plane (c) *ab initio* optimized lattice parameters for $R\text{NiO}_2$ (R = rare earth) within the GGA.

Rare earth	a (Å)	c (Å)
La	3.960	3.370
Pr	3.940	3.341
Nd	3.926	3.302
Pm	3.912	3.263
Sm	3.902	3.237
Eu	3.890	3.206
Gd	3.879	3.177
Tb	3.869	3.155
Dy	3.861	3.133
Ho	3.856	3.110
Er	3.849	3.090
Tm	3.841	3.070
Yb	3.834	3.053
Lu	3.828	3.034

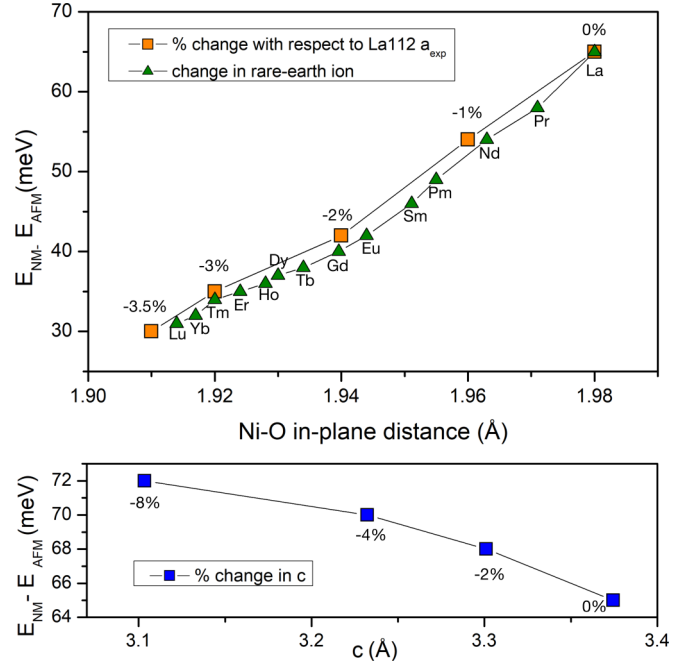


FIG. 4. Energy difference within GGA between a C-type AFM state and a NM state for 112 nickelates as a function of Ni-O in-plane distance corresponding to changes in R and to a lattice parameter reduction with respect to the experimentally reported a value for LaNiO_2 (top panel) and out-of-plane lattice parameter reduction with respect to the experimentally reported c value for LaNiO_2 (bottom panel).

lattice constants (a zoomed-in version of the band structures around the Fermi level is shown in Fig. 7). In all cases, a single $\text{Ni-}d_{x^2-y^2}$ band crosses the Fermi level. In addition, there are $\text{La-}5d$ bands that give rise to two electron pockets that self-dope the $\text{Ni-}d_{x^2-y^2}$ band, as determined in previous work on LaNiO_2 and NdNiO_2 [30,32,34–37]. The pockets at Γ and A have predominant $\text{La-}d_{z^2}$ and $\text{La-}d_{xy}$ character, respectively.

Even though, upon reducing the lattice parameters, there are still bands of $\text{Ni-}d_{x^2-y^2}$ and $\text{La-}d_{xy} + d_{z^2}$ character crossing the Fermi level (E_F), important differences arise upon changing the in-plane lattice parameter. In contrast, altering the out-of-plane lattice constant does not give rise to appreciable differences in the band structure (see Fig. 1). Specifically, upon reducing the in-plane lattice constant (or Ni-O in-plane distance) the most important modifications in the band structure are (1) The increase in size of the $\text{La-}d$ pockets both at A and at Γ . An increase in the size of the R - d pocket at A has been linked to the increase of the hopping between the interstitial and R - d_{xy} orbitals in Ref. [38] when studying trends on different hypothetical d^9 -layered nickelates. (2) The increase in the bonding-antibonding splitting of the $\text{Ni-}d_{x^2-y^2}$ and $\text{O-}p\sigma$ states, noticeable at the M point (2 eV increase upon an 8% in-plane lattice parameter reduction with respect to the experimental value). (3) The increase in bandwidth of the $d_{x^2-y^2}$ band crossing the Fermi level (from 3 eV for the experimental lattice constants to 4.6 eV for an 8% reduction of a). These trends are the expected ones: as the in-plane Ni-O distance decreases, the effective $d_{x^2-y^2}$ nearest-neighbor

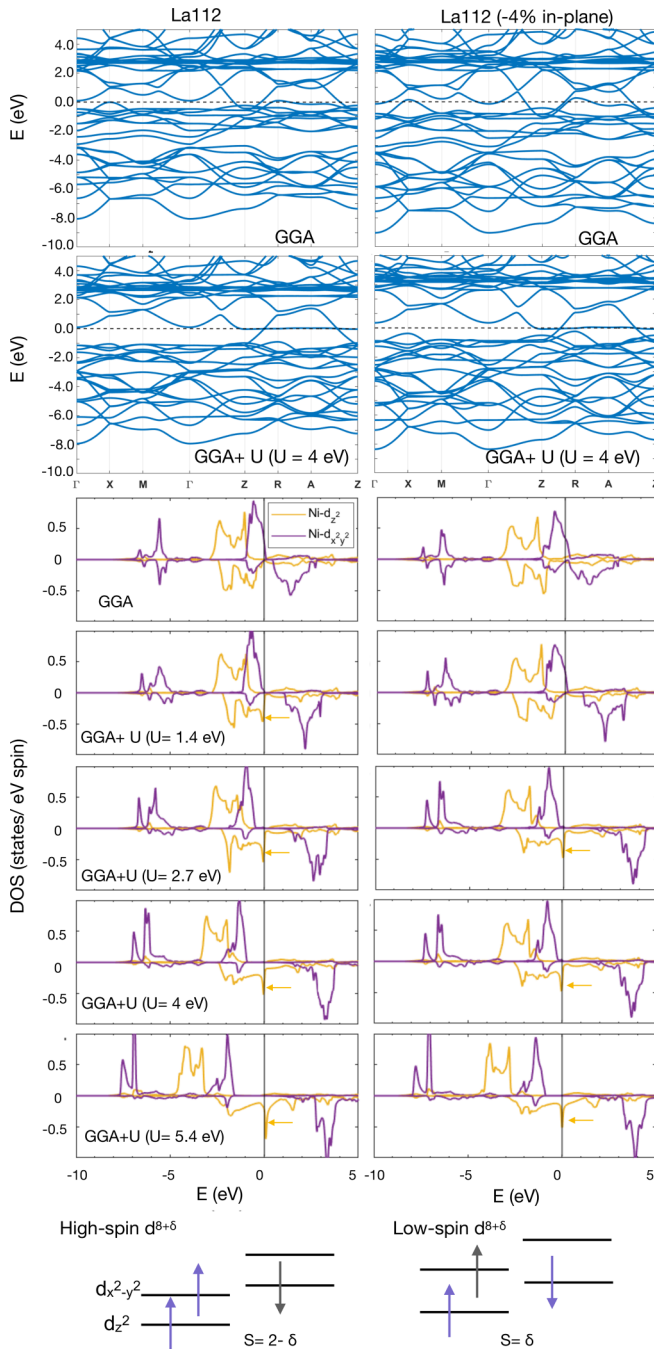


FIG. 5. (top panels) C-type AFM band structure of LaNiO_2 for the experimental lattice parameters (left) and for a 4% a reduction (right) within GGA, and GGA + U (4 eV). (middle panels) Evolution of the $\text{Ni-}d_{x^2-y^2}$ and $\text{Ni-}d_{z^2}$ DOS for LaNiO_2 in the AFM state within the GGA and GGA + U upon increasing U ($U = 1.4\text{--}5.4$ eV). Note the one-dimensional Van Hove singularity pinned at the Fermi level, with pure d_{z^2} character, for $U \geq 1.4$ eV marked by the yellow arrows. (bottom panels) Schematic representation of the energy-level diagrams for high-spin $\text{Ni}^{2+\delta}$ ($d^{8+\delta}$) ion (left) and low-spin (right) in a square-planar environment. The t_{2g} -like levels are fully occupied so we do not show them here. The gray arrow reflects the partial occupation of that particular orbital.

hopping t increases, and so does the bandwidth. The $\text{La-}d$ pockets increase to compensate for the overall upward shift of the $\text{Ni-}d_{x^2-y^2}$ band as the lattice parameters are reduced.

An important difference between 112 nickelates and cuprates, which has been highlighted before [34,35], is the larger charge-transfer energy ($\Delta = E_d - E_p$) in the former. The Δ value derived from on-site energies of the Wannier functions for LaNiO_2 is ≈ 4.4 eV [35], whereas typical cuprate values are ≈ 2 eV [39]. This would put 112 nickelates within the Mott-Hubbard regime in the Zaanen-Sawatzky-Allen classification [40], in contrast with cuprates, a prototypical example of charge-transfer insulator due to the high degree of p - d hybridization [41]. Figure 2 shows the orbital-resolved density of states for different in-plane lattice-parameter reductions within LaNiO_2 with respect to the experimental value. The most important change in Fig. 2 upon a Ni-O in-plane distance reduction (adding up to effects 1–3 mentioned above) is (4) the shift of the O- p centroid to lower energies (≈ 2 eV shift for an 8% a reduction, 1 eV for a 4% a reduction), while the Ni- d centroid does not significantly move. This last point is very important since it gives rise to a decrease in the degree of p - d hybridization (or an increase in charge-transfer energy) as the Ni-O in-plane distance is reduced. This is consistent with Ref. [32], which reports a reduction in p - d hybridization as R changes from La to Lu (i.e., as the lattice parameter is reduced), as inferred from the degree of oxygen admixture in the lower Hubbard band.

Effects 1–4 in the electronic structure derived from a simple in-plane lattice parameter reduction in LaNiO_2 , can be correlated directly to R changes across the lanthanide series by comparing electronic structures that correspond to the same Ni-O in-plane distance. For example, a $\approx 2.4\%$ in-plane lattice constant reduction in LaNiO_2 can be compared directly with the band structure of GdNiO_2 because they correspond to the same Ni-O distance of 1.93 Å. Figure 3 shows the band structures for these two systems. The bandwidth of the $d_{x^2-y^2}$ bands is identical in the two cases (extending from ≈ 2 to -1 eV), as is the energy range of the O- p (from ≈ -4 to -9 eV) and Ni- d (from ≈ 2 to -3.7 eV) states. Also identical is the position of the O- p centroid. The explicit change in R only gives rise to a slightly different size of the R - d pocket at Γ (marked in red). The same reasoning can be extended to the other R ions (see Appendix Figs. 8–10 for more details).

In essence, all the changes in the electronic structure of RNiO_2 nickelates linked to a change in R (namely the bandwidth, size of the R - d pockets and charge-transfer energy), can be mimicked by a simple change of in-plane lattice constant corresponding to the same Ni-O distance. In contrast, a large change in out-of-plane lattice constant has negligible effects in the electronic structure. Hence, we conclude that the relevant control parameter for the electronic structure of 112 nickelates is the Ni-O in-plane distance. A change in R has, per se, negligible effects in the electronic structure, an expected outcome given their chemical similarity. It is simply the Ni-O in-plane distance reduction a change in R gives rise to (as the size of R gets reduced from La to Lu) that has profound effects in the electronic structure. This result contrasts with Ref. [32] in that we find no significant effects that we can ascribe to a specific rare earth or to the change in out-of-plane lattice constants.

C. Spin-polarized calculations

Strong antiferromagnetic correlations are considered a key ingredient in cuprates. In contrast, there is no experimental evidence for antiferromagnetic order in 112 nickelates to date [16,18,19]. Recent dynamical mean-field theory (DMFT) calculations in 112 nickelates point to the importance of a multi-orbital picture with low-energy relevance of a flat Ni- d_{z^2} band, and the existence of high-spin Ni- d^8 [42–45]. DFT calculations using C-type AFM order in NdNiO₂ are consistent with this picture in that they also show a flat Ni- d_{z^2} band arising at the Fermi level [46]. This work concludes that this flat band may be related to instabilities that could limit AFM order at low temperature and preclude the AFM phase with the formation of an AFM spin-liquid state that forms the platform for superconductivity [46]. To determine the importance and robustness of this flat-band feature in the AFM state for other R ions we analyze, using spin-polarized calculations, different magnetic configurations for RNiO₂ ($R = \text{La-Lu}$) and correlate these trends with in-plane and out-of-plane lattice parameter changes in LaNiO₂ (as done in the previous section for NM calculations).

Both a C-type and a G-type AFM state are more stable than a NM state for LaNiO₂ from first principles. A G-type AFM state is the ground state within GGA (with a small energy difference of 5 meV/Ni with respect to the C-type AFM state, and 70 meV/Ni with respect to the NM state). However, the C-type AFM state becomes more stable than a G-type one within GGA + U for $U \geq 1.4$ eV. This is consistent with the results in Ref. [31] (see Fig. 6 for more details). Attempts to stabilize a FM state give rise to a reduced magnetic moment of $\approx 0.2 \mu_B$ at the GGA level, less stable than any of the AFM states by ≈ 0.72 meV/Ni. Note that all these energy differences are small.

As the C-type AFM state is the ground state for a reasonable U value for these metallic nickelates ($U \approx 4\text{--}5$ eV) [29,30], this is the AFM order we employ to show magnetic trends in all other RNiO₂ materials to make a systematic comparison. We note that Ref. [32] describes the evolution of the electronic structure with U in the G-type AFM state instead. G-type AFM order is also the focus of Ref. [47] for NdNiO₂.

The GGA-energy difference between the C-type AFM state and the NM one for RNiO₂ ($R = \text{La-Lu}$) is shown in Fig. 4 as a function of R and in-plane lattice parameter change. For every R ion and for every lattice parameter used, the ground state of the 112 materials keeps on being AFM. However, as the in-plane lattice parameter or size of R decreases, the energy difference between the AFM and NM state decreases as well (see Fig. 4). Based on these considerations, we anticipate that the tendency towards AFM should be suppressed in R112 as the size of R or Ni-O in-plane distance is reduced, consistent with the concomitant increase in bandwidth described above. Importantly, the energy difference linked to the in-plane lattice parameter change can be matched almost exactly to that related to a change in R , in agreement with the main conclusion drawn from the NM calculations in the previous section: the change in Ni-O in-plane distance controls the electronic structure of these systems and the R change is not relevant other than for the Ni-O distance change it carries. To

further reinforce that the Ni-O in-plane distance is the control parameter in 112 materials, the energy difference between a NM and an AFM state is also shown for an out-of-plane lattice constant reduction. A large 8% reduction of the out-of-plane lattice constant gives rise to a very small energy difference across the series (≈ 7 meV) and does not produce significant changes in the electronic structure.

We now turn to the nature of the AFM state. A simple ionic count for 112 nickelates gives a Ni valence of Ni¹⁺: d^9 , as mentioned above. However, the self-doping effect effectively gives rise to a $d^{8+\delta}$ ion (with a large δ). In a square planar environment (with a large crystal-field splitting between the $d_{x^2-y^2}$ and d_{z^2} bands) two possible spin states can occur (see Fig. 5). If the crystal-field splitting within the e_g states is larger than Hund's rule coupling, a low spin (LS) state develops [with $S = \delta/2$ and a moment (δ) μ_B per nickel]. If the Hund's rule coupling is larger, a high spin (HS) state would be more stable [with $S = (2 - \delta)/2$ and a moment $(2 - \delta) \mu_B$ per nickel]. The HS and LS states lead to different properties not only in terms of the moments but also in terms of the electronic structure. In particular, for a HS state, Ni- d_{z^2} states are relevant in the vicinity of the Fermi level, in contrast with the more cuprate-like scenario of a LS state, with only a Ni- $d_{x^2-y^2}$ being relevant. Hence, the careful analysis of HS vs LS states in R112 nickelates is very important. In this context, it has recently been reported that layered oxychalcogenides A₂NiO₂Ag₂Se₂ ($A = \text{Sr, Ba}$), with a NiO₂ square lattice and Ni- d^8 , may exhibit HS $S = 1$ Ni²⁺ [48], or a Ni on-site "off-diagonal singlet" in which both e_g orbitals are singly occupied but with Kondo-like oppositely spin-directed singlets [49].

Figure 5 shows the AFM-GGA band structure for LaNiO₂ at the experimental lattice parameters and for a 4% in-plane lattice parameter reduction. Both band structures look similar: the derived state is metallic with a Ni- $d_{x^2-y^2}$ band crossing the Fermi level and a La- d pocket around Z . The derived Ni magnetic moments are consistent with LS Ni- $d^{8+\delta}$ ($\approx 0.7 \mu_B$ for the experimental lattice constants, $\approx 0.6 \mu_B$ for a 4% in-plane lattice parameter reduction). The only differences upon reducing the in-plane lattice parameter are (1) a slight reduction of the Ni-magnetic moment and (2) an increase in bandwidth, as expected. The same trends are observed for AFM calculations upon a change in R across the lanthanide series (see Figs. 11, 12 and 13).

Within GGA + U , the magnetic moments and electronic structure of LaNiO₂ at small U value (≤ 1 eV) are very similar to those obtained within GGA, with a Ni- $d_{x^2-y^2}$ and La- d band crossing the Fermi level. At a U value of 1.4 eV, a flat d_{z^2} band emerges at E_F , as shown in Fig. 5 that depicts the Ni- d_{z^2} and Ni- $d_{x^2-y^2}$ DOS upon increasing U and shows the corresponding band structure at $U = 4$ eV. In this band structure the flat band can be clearly observed along the Z-R-A-Z direction (for the band structures at other U values see Appendix, Fig. 14). We find that this feature is robust in DFT for LaNiO₂ (and other R s, see below), in agreement with what Ref. [46] reports for NdNiO₂ within DFT, and also in agreement with recent DMFT work [42–45]. We note that the La- d states appear well below the Fermi level (see Appendix Fig. 15). As U increases, so does the value of the Ni magnetic moment from the $0.7 \mu_B$ obtained within GGA for the experimental lattice constants, up to $\approx 1.3 \mu_B$ within GGA + U for the highest U

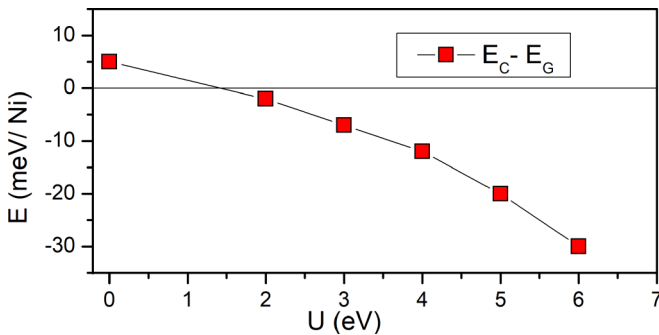


FIG. 6. Energy difference between the two lowest-energy magnetic states (G-type AFM and C-type AFM) for LaNiO_2 within the GGA and GGA + U as a function of U ($U = 2-6$ eV). Negative indicates C-type is stable, positive indicates G-type is stable.

value shown of 5.4 eV. This change in the electronic structure is consistent with a LS-to-HS transition with increasing U (even though this behavior had been observed before in DFT calculations [35,46], it had never been ascribed to a LS-to-HS $\text{Ni-}d^{8+\delta}$ transition).

The metallic character of the AFM state obtained for La112 , the LS-to-HS transition upon increasing U , and the flat d_{z^2} band feature are robust upon reduction of the in-plane lattice parameter (as shown in Fig. 5) and, more importantly, upon a change in R (see Figs. 11-14). All in all, this peculiar AFM state with a flat d_{z^2} band pinned at the Fermi level is stable from first-principles calculations for every R and every lattice parameter. Hence, we anticipate the instabilities limiting AFM order at low temperature described in Ref. [46] might be in action in all other parent $R\text{NiO}_2$ materials if they can be synthesized.

IV. CONCLUSIONS

Using DFT calculations, we have analyzed the evolution of the electronic structure and magnetic properties of $R\text{NiO}_2$ nickelates as R changes across the lanthanide series. By correlating these changes with in-plane and out-of-plane lattice-parameter reductions in LaNiO_2 (the extreme member

of the series), we determine that the electronic and magnetic responses of infinite-layer nickelates are governed by the in-plane Ni-O distance. In contrast, changes in out-of-plane lattice constant have negligible effects. The non-cuprate-like properties reported for LaNiO_2 and NdNiO_2 persist for other rare-earth ions, i.e., involvement of R bands at the Fermi level and large charge-transfer energy. The ground state for $R\text{NiO}_2$ materials from first-principles calculations for every R and lattice parameter studied is AFM and metallic, even though the tendency towards AFM is suppressed as the size of R gets reduced from La to Lu. In contrast with cuprates, this AFM state is characterized by multi-orbital character with a flat $\text{Ni-}d_{z^2}$ band pinned at the Fermi level (in addition to the naively expected $d_{x^2-y^2}$ states), which enables the formation of high-spin Ni states. It was recently suggested [46] that, for NdNiO_2 , this flat band can make the system unstable with respect to charge, spin, and lattice orders, limiting AFM order at low temperature. The robustness of this flat d_{z^2} band for every R (and lattice parameter) in $R\text{NiO}_2$ nickelates suggests that the same instabilities may arise across the lanthanide series if other members can be synthesized.

ACKNOWLEDGMENTS

We acknowledge fruitful discussions with V. Pardo. A.S.B. acknowledges NSF-DMR Grant 1904716. We acknowledge the ASU Research Computing Center for HPC resources.

APPENDIX: GGA AND GGA + U ELECTRONIC STRUCTURE $R\text{NiO}_2$

Figure 6 shows the energy difference between C-type and G-type AFM ordering ($E_C - E_G$) for LaNiO_2 within GGA and GGA + U at different values of U . Within GGA, $E_C - E_G > 0$, so G-type ordering is more stable. However, for $U \geq 2$, the energy difference is negative, thus the C-type AFM order is more stable. In addition, both C- and G-type AFM states are more stable than a NM state for GGA and for GGA + U at all U values.

Figure 7 depicts the nonmagnetic band structures for LaNiO_2 shown in Fig. 1 in a zoomed-in energy range so that

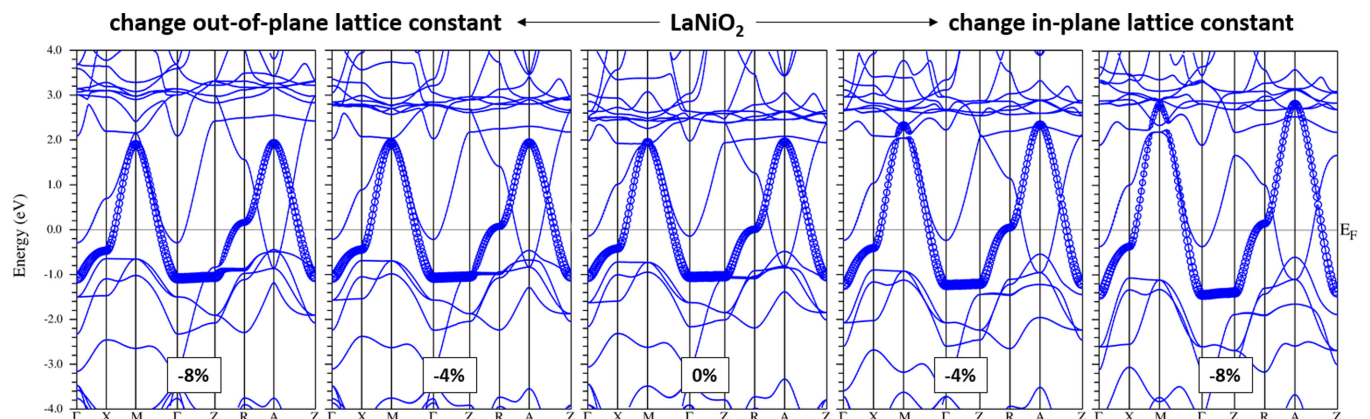


FIG. 7. The GGA nonmagnetic LaNiO_2 band structure with band character plot ($\text{Ni-}d_{x^2-y^2}$ highlighted) at the experimental lattice constants (0%, central panel), upon reduction of in-plane (right panels) and out-of-plane (left panels) lattice parameters. This is a reproduction of the band structures in Fig. 1 zoomed-in around the Fermi energy.

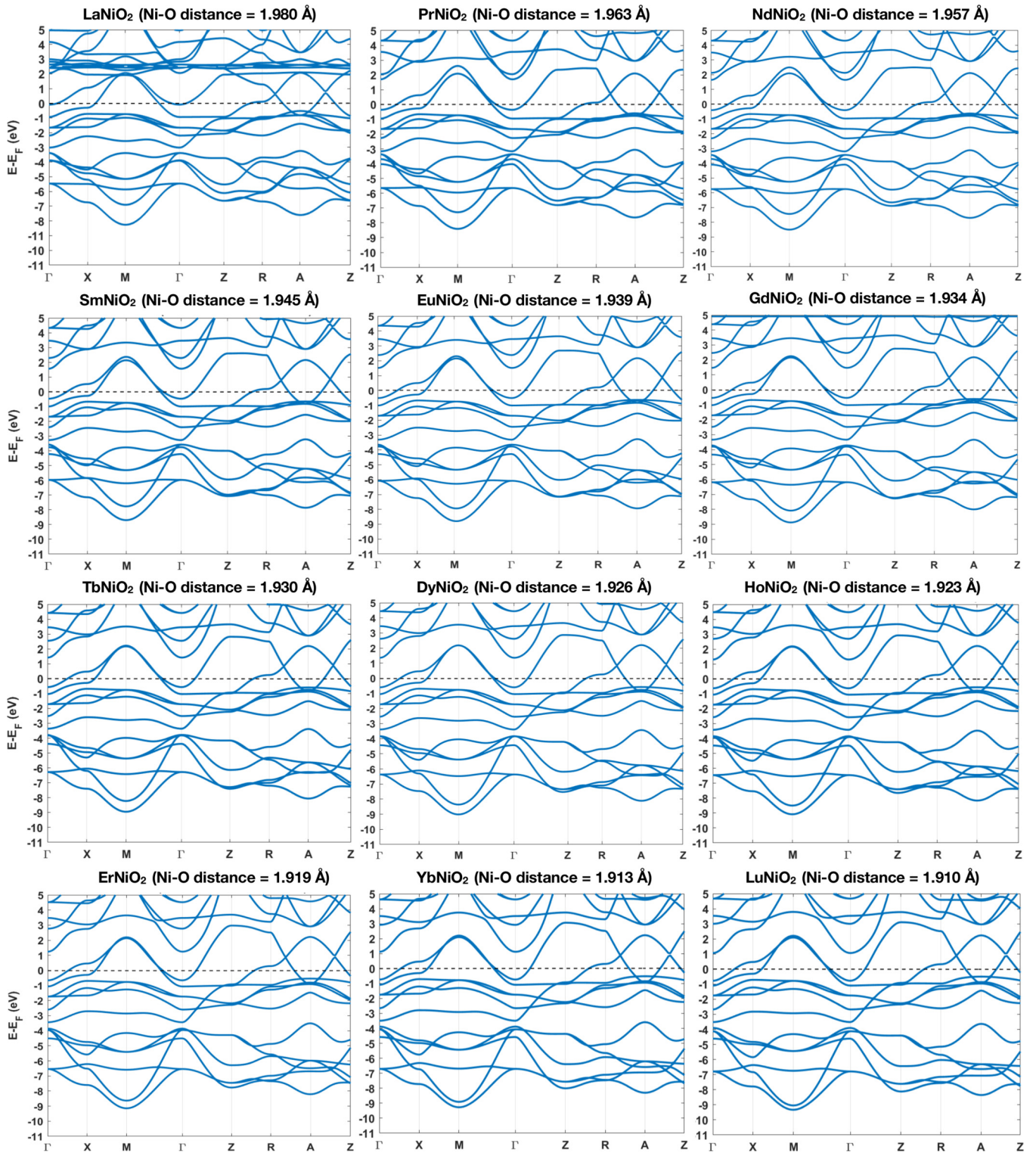


FIG. 8. Nonmagnetic GGA band-structure plots for $RNiO_2$ ($R = \text{La-Lu}$).

the behavior around the Fermi level can be ascertained more easily. The changes to the band structure are readily apparent for a reduction in the in-plane lattice parameter (increase in $Ni-d_{x^2-y^2}$ bandwidth and size of $La-d$ pockets), whereas a reduction in the out-of-plane lattice parameter produces negligible changes.

Figure 8 shows the nonmagnetic GGA band structure plots of $RNiO_2$ for twelve different R ions with associated Ni-O distances. Comparatively, Fig. 9 shows the nonmagnetic GGA band structure plots of $LaNiO_2$ for different in-plane lattice parameters, ranging from the experimental one to an 8% reduction, along with associated Ni-O distances. One can see

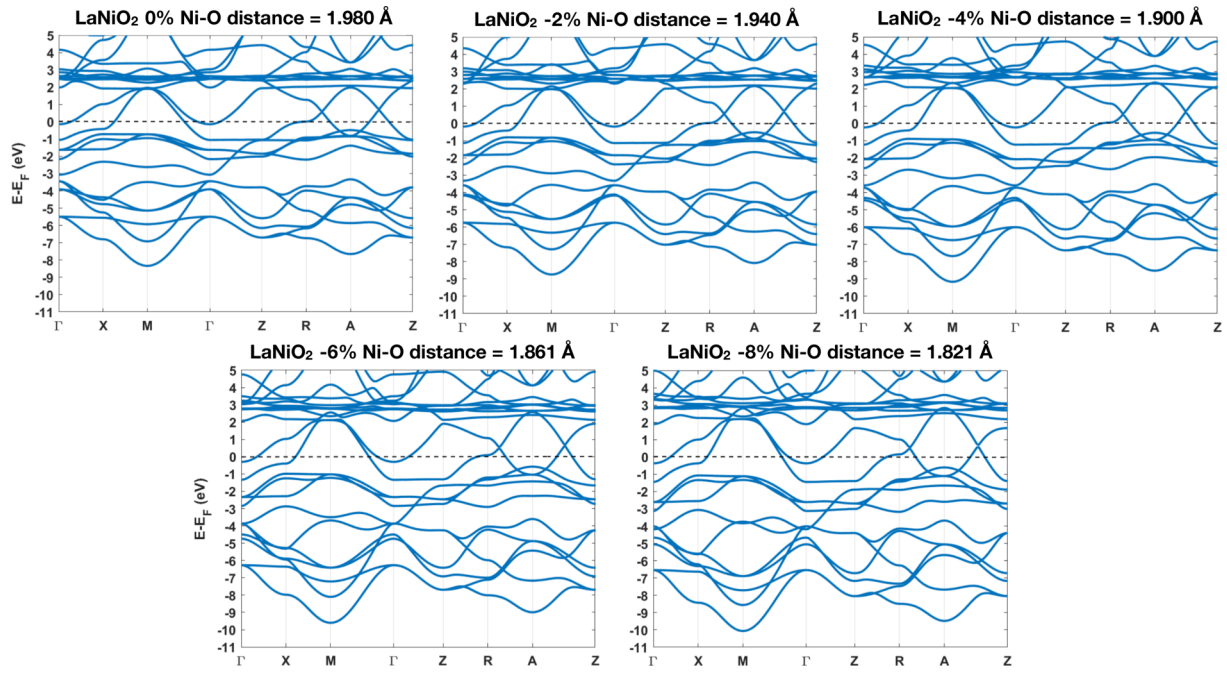


FIG. 9. Nonmagnetic GGA band structure plots for LaNiO_2 at different in-plane lattice parameter reductions with respect to the experimental one.

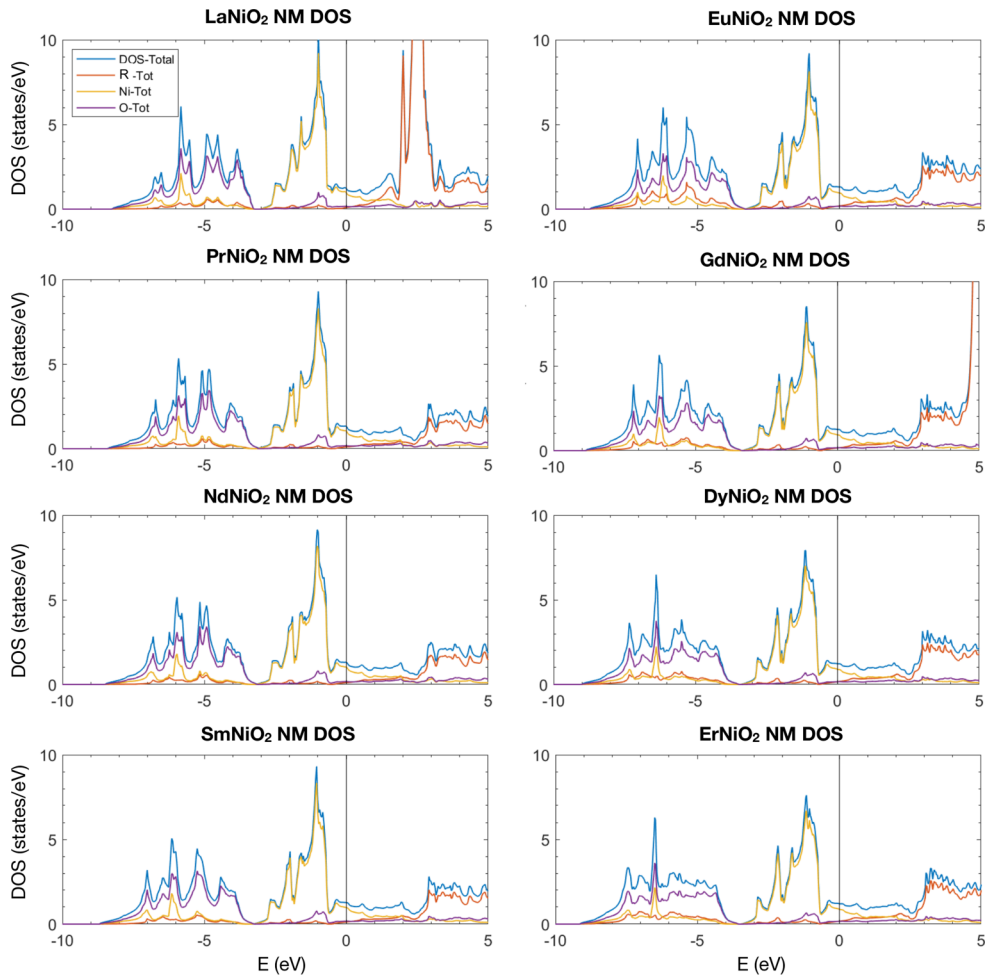


FIG. 10. Total, R, Ni, and O atom-resolved density of states for different $R112$.

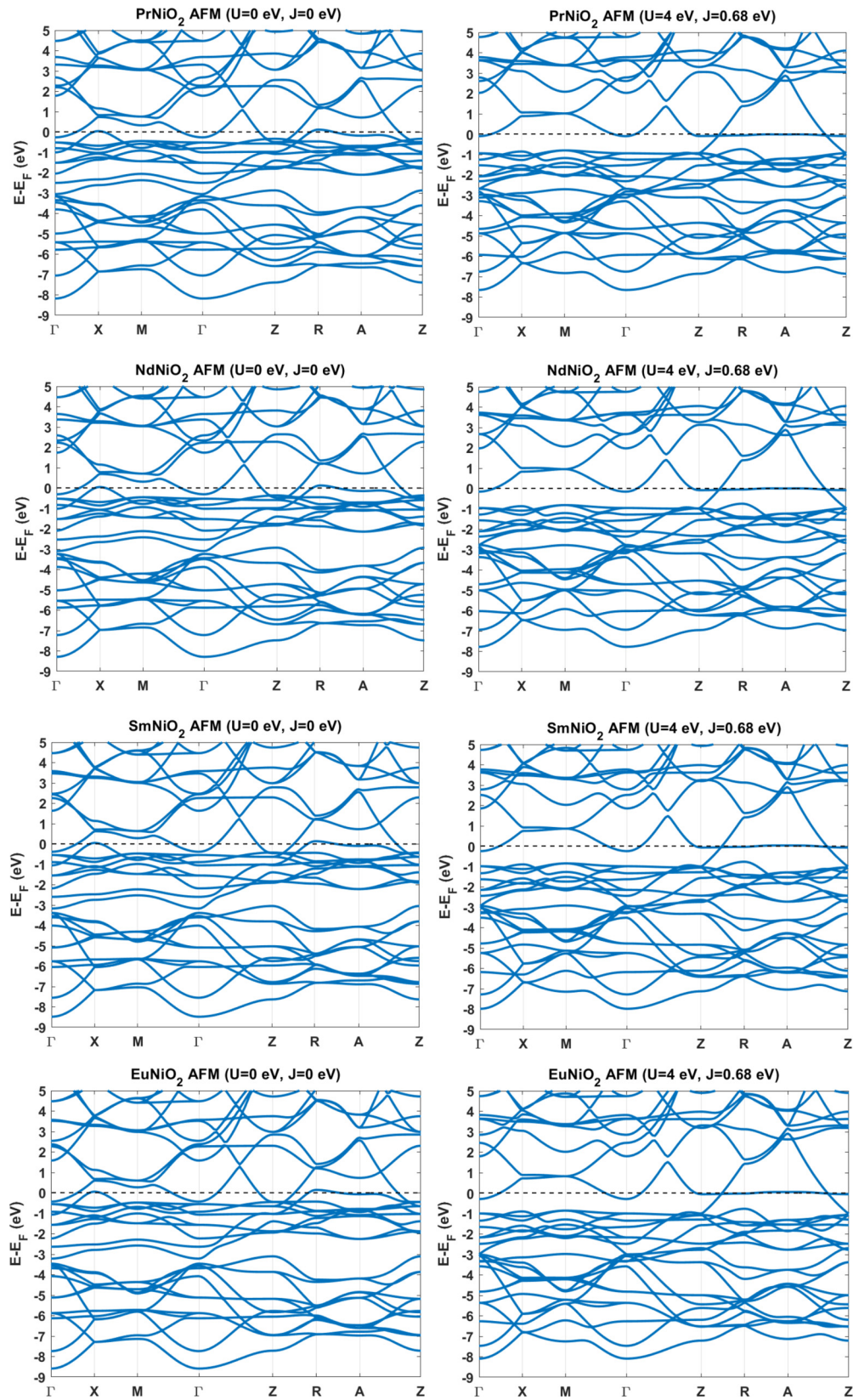


FIG. 11. AFM GGA (left) and GGA + U ($U = 4$ eV, right) band structure for $RNiO_2$. Notice the flat band of Ni- d_{2_2} character pinned at E_F along Z-R-A-Z.

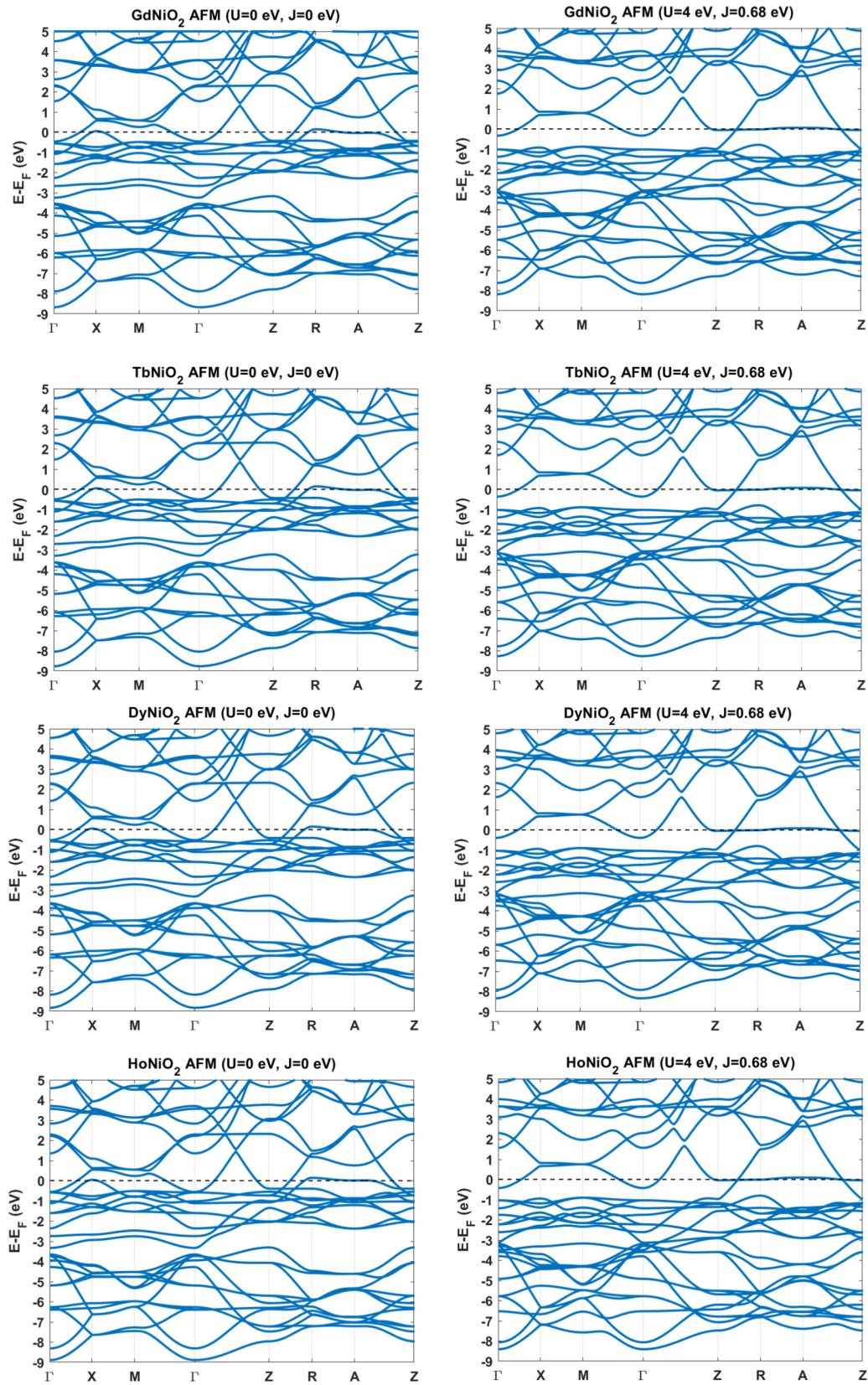


FIG. 12. (continued) AFM GGA (left) and GGA + U ($U = 4$ eV, right) band structure for $RNiO_2$. Notice the flat band of Ni- d_{22} character pinned at E_F along Z-R-A-Z.

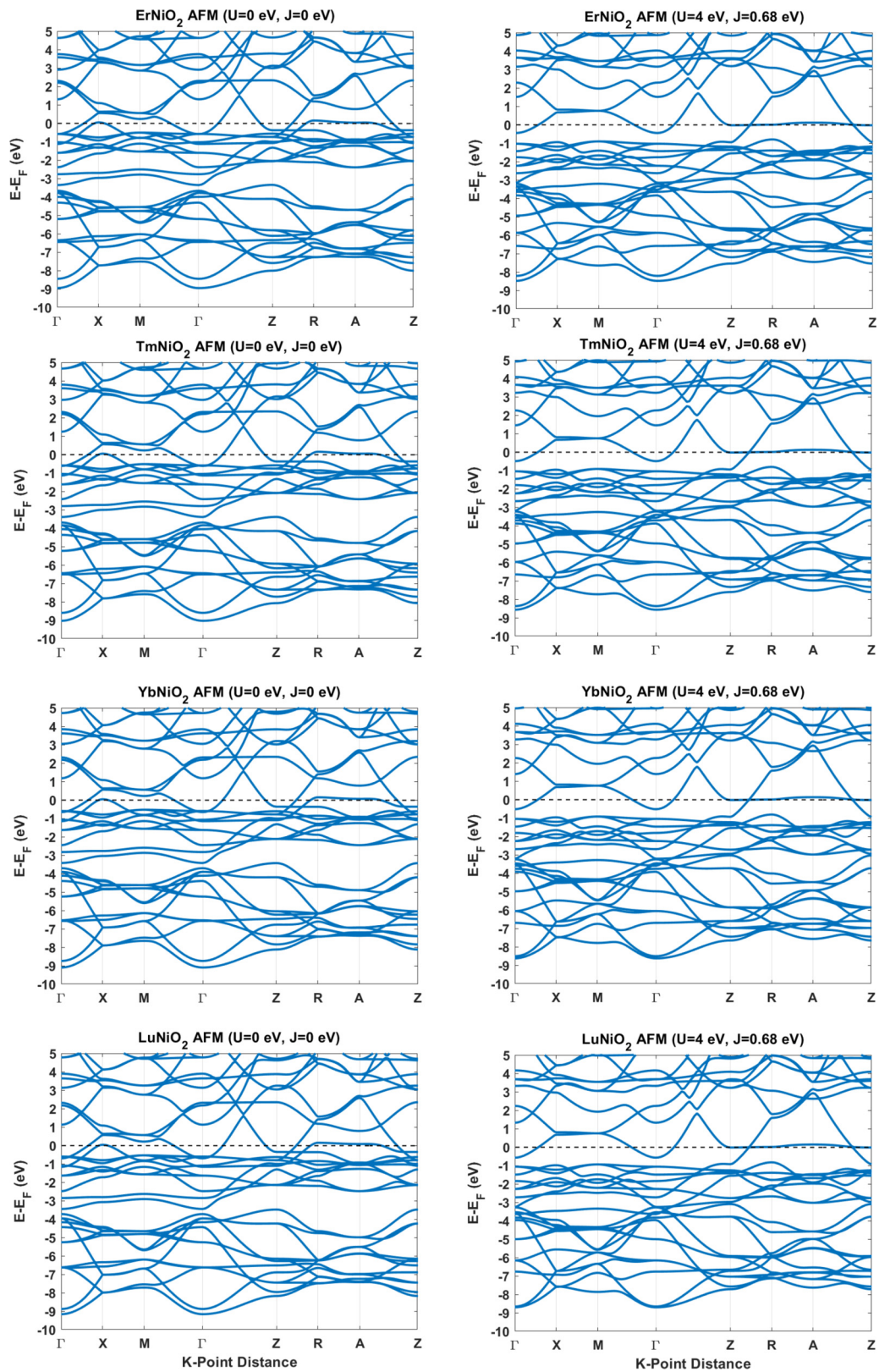


FIG. 13. (continued) AFM GGA (left) and GGA + U ($U = 4$ eV, right) band structure for $R\text{NiO}_2$. Notice the flat band of Ni- d_{z^2} character pinned at E_F along Z-R-A-Z.

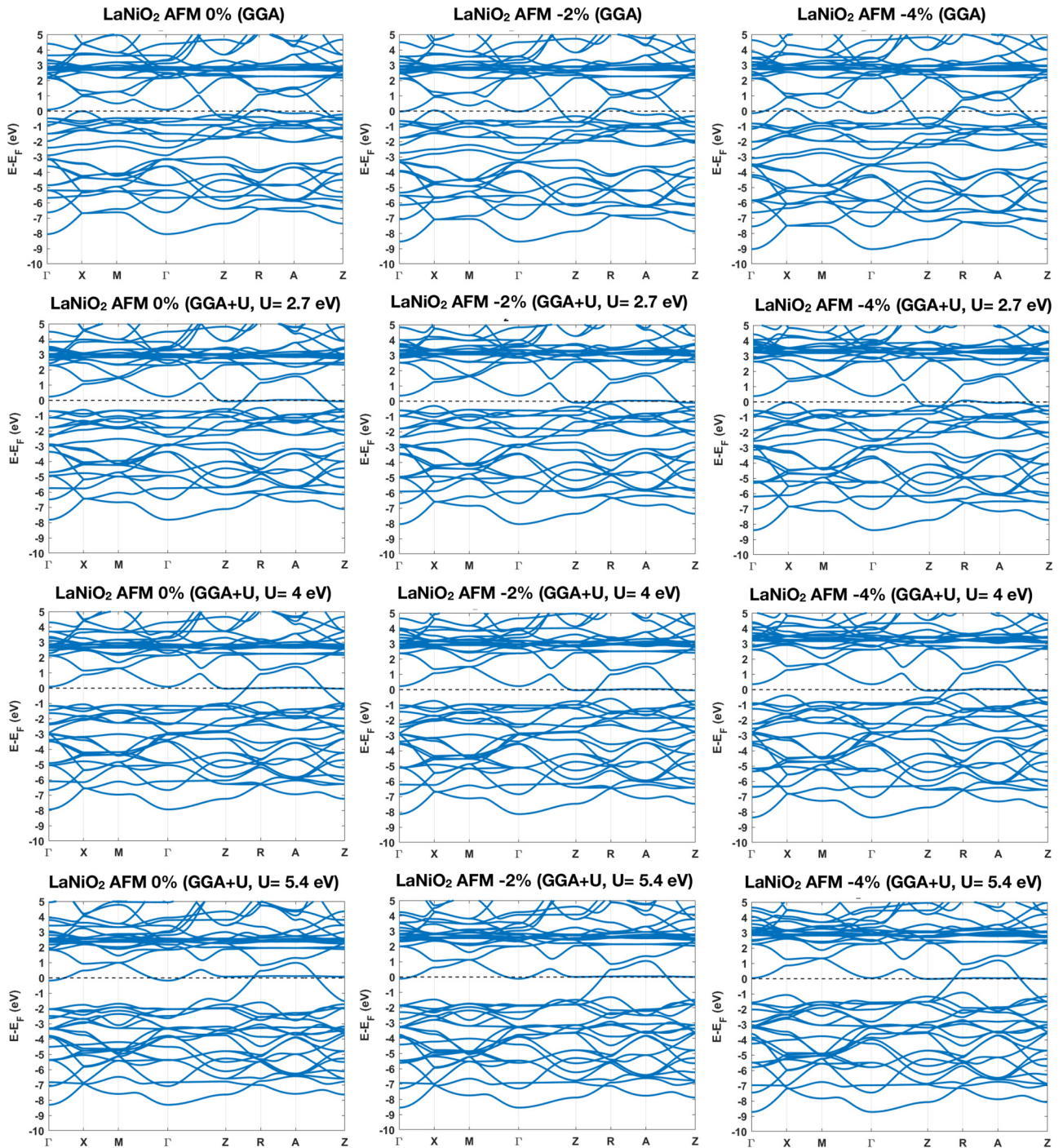


FIG. 14. AFM GGA and GGA + U ($U = 2.7, 4,$ and 5.4 eV) band-structure plots LaNiO_2 at different in-plane lattice parameters. Notice the flat band of $\text{Ni-}d_2$ character pinned at E_F along Z-R-A-Z.

the similarities between band structures of comparable Ni-O distance and also the same trend of increasing bandwidth as the Ni-O distance is decreased for different R ions (as in Fig. 8) and for decreasing in-plane lattice parameter (as in Fig. 9).

Figure 10 depicts the nonmagnetic R , Ni, and O atom-resolved density of states plots for eight different R ions in $R112$. One can notice the increase in charge-transfer energy as the size of R decreases with increasing atomic number across the lanthanide series. The same trends are observed in LaNiO_2

for decreasing in-plane lattice parameter, as shown in Fig. 3 in the main text.

Figures 11, 12, and 13 depict the AFM band-structure plots for RNiO_2 for twelve R ions within the GGA and GGA + U ($U = 4$ eV, $J = 0.68$ eV). The bandwidth can be seen to increase for decreasing lattice parameter, and a flat $\text{Ni-}d_2$ band appears pinned at the Fermi energy along Z-R-A-Z within GGA + U . For each value of U , the Ni magnetic moment decreases as the size of R decreases with increasing atomic number across the lanthanide series.

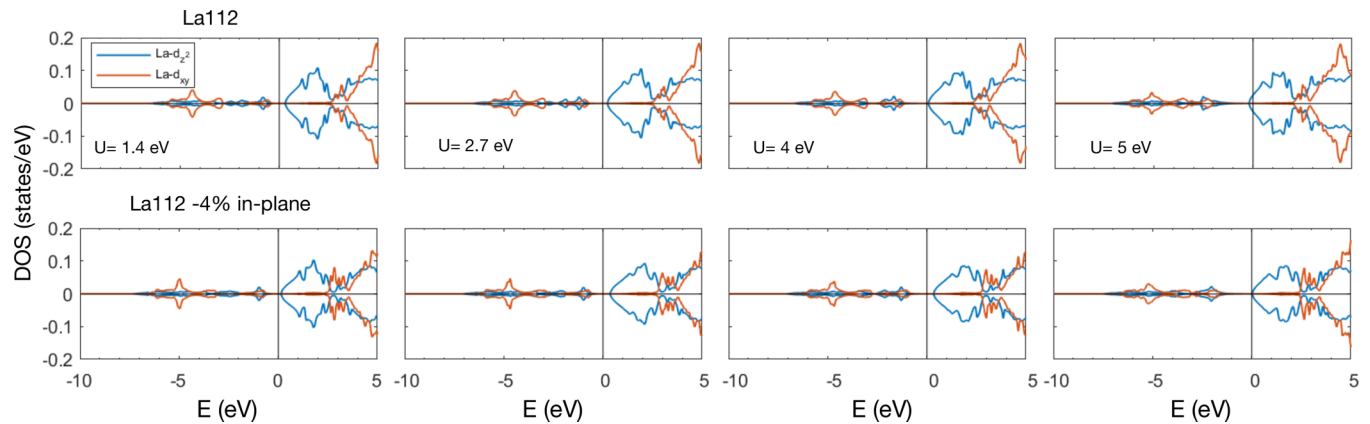


FIG. 15. AFM GGA + U ($U = 1.4$ to 5.4 eV) La d -orbital-resolved DOS for LaNiO_2 at different in-plane lattice parameters.

Figure 14 shows the AFM band-structure plots of LaNiO_2 for different in-plane lattice parameters [experimental (0%), 2%, and 4% reduction] within the GGA and GGA + U ($U = 2.7, 4,$ and 5.4 eV, $J = 0.68$ eV). The same flat $\text{Ni-}d_{z^2}$ band appears pinned at the Fermi energy along Z-R-A-Z for nonzero values of U . For each value of U , the Ni

magnetic moment decreases with decreasing in-plane lattice parameter.

Figure 15 shows the La- d orbital-resolved density of states for LaNiO_2 for a C-type AFM order at different in-plane lattice parameters (0% and -4% reduction) within GGA and GGA + U ($U = 1.4, 2.7, 4,$ and 5.4 eV).

- [1] M. R. Norman, *Rep. Prog. Phys.* **79**, 074502 (2016).
- [2] P. Hansmann, X. Yang, A. Toschi, G. Khaliullin, O. K. Andersen, and K. Held, *Phys. Rev. Lett.* **103**, 016401 (2009).
- [3] J. Chaloupka and G. Khaliullin, *Phys. Rev. Lett.* **100**, 016404 (2008).
- [4] S. Catalano, M. Gibert, J. Fowlie, J. Íñiguez, J.-M. Triscone, and J. Kreisel, *Rep. Prog. Phys.* **81**, 046501 (2018).
- [5] J. Varignon, M. N. Grisolia, J. Íñiguez, A. Barthélémy, and M. Bibes, *npj Quantum Mater.* **2**, 21 (2017).
- [6] S. Middey, J. Chakhalian, P. Mahadevan, J. Freeland, A. Millis, and D. Sarma, *Annu. Rev. Mater. Res.* **46**, 305 (2016).
- [7] V. V. Poltavets, K. A. Lokshin, M. Croft, T. K. Mandal, T. Egami, and M. Greenblatt, *Inorg. Chem. (Washington, DC, U. S.)* **46**, 10887 (2007).
- [8] V. V. Poltavets, K. A. Lokshin, S. Dikmen, M. Croft, T. Egami, and M. Greenblatt, *J. Am. Chem. Soc.* **128**, 9050 (2006).
- [9] J. Zhang, A. S. Botana, J. W. Freeland, D. Phelan, H. Zheng, V. Pardo, M. R. Norman, and J. F. Mitchell, *Nat. Phys.* **13**, 864 (2017).
- [10] A. S. Botana, V. Pardo, and M. R. Norman, *Phys. Rev. Mater.* **1**, 021801 (2017).
- [11] D. Li, K. Lee, B. Y. Wang, M. Osada, S. Crossley, H. R. Lee, Y. Cui, Y. Hikita, and H. Y. Hwang, *Nature (London)* **572**, 624 (2019).
- [12] D. Li, B. Y. Wang, K. Lee, S. P. Harvey, M. Osada, B. H. Goodge, L. F. Kourkoutis, and H. Y. Hwang, *Phys. Rev. Lett.* **125**, 027001 (2020).
- [13] S. Zeng, C. S. Tang, X. Yin, C. Li, Z. Huang, W. L. Junxiang Hu, G. J. Omar, H. Jani, Z. S. Lim, K. Han, D. Wan, P. Yang, A. T. S. Wee, and A. Ariando, *Phys. Rev. Lett.* **125**, 147003 (2020).
- [14] V. I. Anisimov, D. Bukhalov, and T. M. Rice, *Phys. Rev. B* **59**, 7901 (1999).
- [15] M. Hayward and M. Rosseinsky, *Solid State Sci.* **5**, 839 (2003), International Conference on Inorganic Materials 2002.
- [16] M. A. Hayward, M. A. Green, M. J. Rosseinsky, and J. Sloan, *J. Am. Chem. Soc.* **121**, 8843 (1999).
- [17] M. Crespin, P. Levitz, and L. Gataineau, *J. Chem. Soc., Faraday Trans. 2* **79**, 1181 (1983).
- [18] A. Ikeda, T. Manabe, and M. Naito, *Phys. C (Amsterdam, Neth.)* **495**, 134 (2013).
- [19] A. Ikeda, Y. Krockenberger, H. Irie, M. Naito, and H. Yamamoto, *Appl. Phys. Express* **9**, 061101 (2016).
- [20] G. Kresse and D. Joubert, *Phys. Rev. B* **59**, 1758 (1999).
- [21] G. Kresse and J. Furthmüller, *Phys. Rev. B* **54**, 11169 (1996).
- [22] G. Kresse and J. Furthmüller, *Comput. Mater. Sci.* **6**, 15 (1996).
- [23] M.-Y. Choi, K.-W. Lee, and W. E. Pickett, *Phys. Rev. B* **101**, 020503(R) (2020).
- [24] P. Blaha, K. Schwarz, G. K. H. Madsen, D. Kvasnicka, and J. Luitz, *WIEN2k, An Augmented Plane Wave Plus Local Orbitals Program for Calculating Crystal Properties*, Vienna University of Technology, Austria (2001).
- [25] K. Schwarz and P. Blaha, *Comput. Mater. Sci.* **28**, 259 (2003).
- [26] J. P. Perdew, K. Burke, and M. Ernzerhof, *Phys. Rev. Lett.* **77**, 3865 (1996).
- [27] A. I. Liechtenstein, V. I. Anisimov, and J. Zaanen, *Phys. Rev. B* **52**, R5467 (1995).
- [28] E. R. Ylvisaker, W. E. Pickett, and K. Koepf, *Phys. Rev. B* **79**, 035103 (2009).
- [29] H. Sakakibara, H. Usui, K. Suzuki, T. Kotani, H. Aoki, and K. Kuroki, *Phys. Rev. Lett.* **125**, 077003 (2020).
- [30] Y. Nomura, M. Hirayama, T. Tadano, Y. Yoshimoto, K. Nakamura, and R. Arita, *Phys. Rev. B* **100**, 205138 (2019).
- [31] T. Liu, H. Wu, T. Jia, X. Zhang, Z. Zeng, H. Q. Lin, and X. G. Li, *AIP Adv.* **4**, 047132 (2014).

- [32] E. Been, W. Lee, H. Y. Hwang, Y. Cui, J. Zaanen, T. P. Devereaux, B. Moritz, and C. Jia, [arXiv:2002.12300](#).
- [33] R. D. Shannon, *Acta Crystallogr., Sect. A: Cryst. Phys., Diffr., Theor. Gen. Crystallogr.* **32**, 751 (1976).
- [34] K.-W. Lee and W. E. Pickett, *Phys. Rev. B* **70**, 165109 (2004).
- [35] A. S. Botana and M. R. Norman, *Phys. Rev. X* **10**, 011024 (2020).
- [36] G.-M. Zhang, Y.-f. Yang, and F.-C. Zhang, *Phys. Rev. B* **101**, 020501(R) (2020).
- [37] P. Jiang, L. Si, Z. Liao, and Z. Zhong, *Phys. Rev. B* **100**, 201106(R) (2019).
- [38] M. Hirayama, T. Tadano, Y. Nomura, and R. Arita, *Phys. Rev. B* **101**, 075107 (2020).
- [39] C. Weber, C. Yee, K. Haule, and G. Kotliar, *Europhys. Lett.* **100**, 37001 (2012).
- [40] J. Zaanen, G. A. Sawatzky, and J. W. Allen, *Phys. Rev. Lett.* **55**, 418 (1985).
- [41] M. Jiang, M. Berciu, and G. A. Sawatzky, *Phys. Rev. Lett.* **124**, 207004 (2020).
- [42] F. Lechermann, *Phys. Rev. B* **101**, 081110(R) (2020).
- [43] F. Lechermann, *Phys. Rev. X* **10**, 041002 (2020).
- [44] F. Petocchi, V. Christiansson, F. Nilsson, F. Aryasetiawan, and P. Werner, [arXiv:2006.00394](#).
- [45] P. Werner and S. Hoshino, *Phys. Rev. B* **101**, 041104(R) (2020).
- [46] M.-Y. Choi, W. E. Pickett, and K.-W. Lee, *Phys. Rev. Research* **2**, 033445 (2020).
- [47] Z. Liu, Z. Ren, W. Zhu, Z. Wang, and J. Yang, *npj Quantum Mater.* **5**, 31 (2020).
- [48] Y. Matsumoto, T. Yamamoto, K. Nakano, H. Takatsu, T. Murakami, K. Hongo, R. Maezono, H. Ogino, D. Song, C. M. Brown, C. Tassel, and H. Kageyama, *Angew. Chem., Int. Ed.* **58**, 756 (2020).
- [49] H.-S. Jin, W. E. Pickett, and K.-W. Lee, *Phys. Rev. Research* **2**, 033197 (2020).