

Landau-Zener-Stückelberg-Majorana interferometry of a superconducting qubit in front of a mirror

P. Y. Wen,¹ O. V. Ivakhnenko,^{2,3} M. A. Nakonechnyi,² B. Suri,⁴ J.-J. Lin,¹ W.-J. Lin,⁵ J. C. Chen,¹ S. N. Shevchenko^{6,2,3,6,*}, Franco Nori^{6,3,7} and I.-C. Hoi^{1,8,†}

¹*Department of Physics, National Tsing Hua University, Hsinchu 30013, Taiwan*

²*B. Verkin Institute for Low Temperature Physics and Engineering, Kharkov 61103, Ukraine*

³*Theoretical Quantum Physics Laboratory, Cluster for Pioneering Research, RIKEN, Wako-shi, Saitama 351-0198, Japan*

⁴*Department of Instrumentation and Applied Physics, Indian Institute of Science, Bengaluru 560012, India*

⁵*Department of Physics, National Taiwan University, Taipei 10617, Taiwan*

⁶*V. N. Karazin Kharkiv National University, Kharkov 61022, Ukraine*

⁷*Department of Physics, University of Michigan, Ann Arbor, Michigan 48109-1040, USA*

⁸*Center for Quantum Technology, National Tsing Hua University, Hsinchu 30013, Taiwan*



(Received 1 March 2020; revised 19 July 2020; accepted 16 August 2020; published 31 August 2020)

We investigate the Landau-Zener-Stückelberg-Majorana interferometry of a superconducting qubit in a semi-infinite transmission line terminated by a mirror. The transmon-type qubit is at the node of the resonant electromagnetic (EM) field, “hiding” from the EM field. We modulate the resonant frequency of the qubit by applying a sinusoidal flux pump. We perform spectroscopy by measuring the reflection coefficient of a weak probe in the system. Remarkable interference patterns emerge in the spectrum, which can be interpreted as multiphoton resonances in the dressed qubit. Our calculations agree well with the experiments.

DOI: [10.1103/PhysRevB.102.075448](https://doi.org/10.1103/PhysRevB.102.075448)

I. INTRODUCTION

In recent years, superconducting artificial atoms [1] coupled to an open transmission-line waveguide have been a fast growing field, called waveguide quantum electrodynamics (w-QED), which provides a unique platform to investigate atom-light interactions. The uniqueness of w-QED, as compared to conventional cavity QED, is that atoms are coupled to continuum modes of the electromagnetic (EM) field in the waveguide. Exciting problems in w-QED include resonance fluorescence of an artificial atom [2], photon-mediated interactions between distant artificial atoms [3], an atom in front of a mirror [4], time dynamics in atom-like mirrors [5], photon routing [6], generation of nonclassical microwaves [7], the cross-Kerr effect [8], amplification without population inversion [9], the collective Lamb shift between two distant artificial atoms [10], ultrastrong coupling [11], quantum rifling [12], probabilistic motional averaging [13], and the dynamical Casimir effect [14–17].

When a two-level system is driven back and forth around its resonance frequency, it will produce Landau-Zener-Stückelberg-Majorana (LZSM) interference. LZSM interferometry [18–20] has been studied in atomic systems [21], quantum dots [22,23], charge and spin qubits [24,25], and a superconducting qubit in a cavity [26–29], among other areas. However, the effect of LZSM has not been explored with a single artificial atom in front of a mirror, where the artificial

atom is coupled to a continuum of modes of the EM field in the transmission-line waveguide, and the atom interferes with its mirror image, as in Refs. [4,30].

LZSM interferometry is important for both system description and control [31,32]. However, for this to be realized, one needs to have the avoided energy-level crossing in the spectrum as a function of a controlling parameter. One example of systems without this are transmon-type superconducting qubits, where the energy levels are almost independent of the gate voltage. The way to fix this was studied in Ref. [33], which studied the qubit by chirping the microwave frequency, which results in dressed states with avoided-level crossing. In this work, we study a transmon qubit driven by two fields (see also Ref. [34]). One of these dresses the qubit and creates the spectrum with the avoided-level crossing, while the other one makes the system periodically pass around the avoided-level point. This allows us to study LZSM interferometry in a qubit placed in front of a mirror. We could refer to our system as “mirror, mirror”, because the qubit acts as another mirror.

II. SUPERCONDUCTING QUBIT IN FRONT OF A MIRROR

In this work, we investigate the LZSM interferometry of a superconducting qubit in a semi-infinite transmission line, at a distance terminated by a mirror. In particular, the qubit is located at the node of the resonant EM field, where it is hiding from the EM field. We then modulate the resonant frequency of the qubit by applying a sinusoidal wave through an on-chip flux pump. In addition, the qubit is also coupled to the microwave probe signal applied to the transmission line. We then perform the spectroscopy of the system by applying a

*sshevchenko@ilt.kharkov.ua

†ichoi@phys.nthu.edu.tw

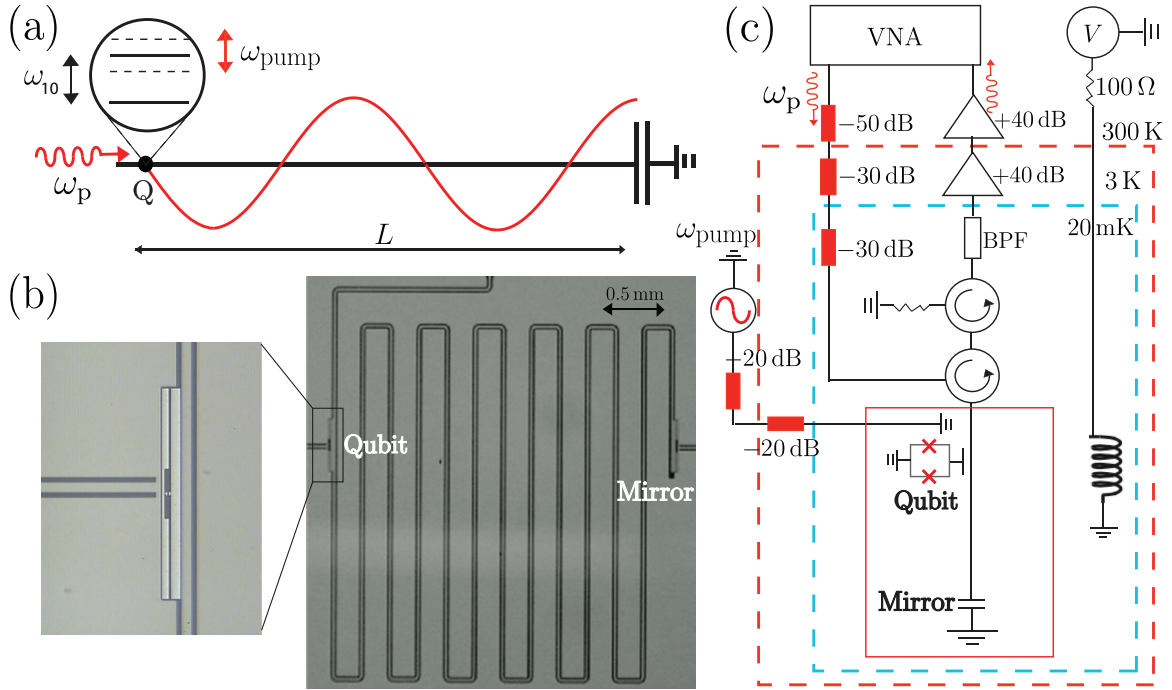


FIG. 1. The experimental setup and device. (a) A conceptual sketch of the device showing the electromagnetic mode (red curve) in the transmission line. The qubit is located at the node of the resonant mode of the EM field, hiding from the EM field. The qubit is subjected to a sinusoidal drive along the transmission line with frequency ω_p and a flux pump ω_{pump} . (b) A photo of the device. The qubit (shown in the zoom-in on the left; the two long bright parts form the qubit capacitance, and the gap in the middle between them is bridged by two Josephson junctions forming a SQUID loop) is placed $L \simeq 33$ mm from another qubit, which sits at the end of the transmission line (i.e., at the mirror). Note that the qubit at the end of the transmission line is not in use in this work because it is far detuned. The characteristic impedance of the transmission line is $Z_0 \simeq 50 \Omega$. By tuning the qubit transition frequency $\omega_{10}(\Phi)$, we tune the qubit to the node of the EM field. (c) A sketch of the setup for the experiment. The qubit frequency ω_{10} can be tuned by a global magnetic field from a superconducting coil controlled by a dc voltage V . For measurements, a coherent signal at frequency ω_p is generated by a vector network analyzer (VNA) at room temperature and fed through attenuators (red squares) to the sample, which sits in a cryostat cooled at 20 mK to avoid thermal fluctuations affecting the experiment. The reflected signal passes a bandpass filter (BPF) and amplifiers and is then measured with the VNA. Here ω_{pump} relates to the flux pump to modulate the transition frequency of the qubit.

weak probe field along the transmission line and measure the reflection coefficient. Interesting interference patterns emerge in the spectrum, which can be explained by multiphoton resonances in the dressed qubit. New features appear, as compared to conventional LZSM interference; for example, now the zero-order Rabi sideband vanishes (see also Ref. [35]).

Figure 1 shows (a) a sketch of the device, (b) the image of the device, and (c) the measurement setup. A transmon qubit [36–38] is embedded in a semi-1D transmission line with characteristic impedance $Z_0 \simeq 50 \Omega$, with the ground state $|0\rangle$ and the excited state $|1\rangle$. The $|0\rangle \leftrightarrow |1\rangle$ transition energy is

$$\hbar\omega_{10}(\Phi) \approx \sqrt{8E_J(\Phi)E_C} - E_C, \quad (1)$$

which is determined by the single-electron charging energy $E_C = e^2/2C_\Sigma$, where C_Σ is the total capacitance of the qubit, and the flux-dependent Josephson energy $E_J(\Phi) = E_{J,\text{max}}|\cos(\pi\Phi/\Phi_0)|$; $\Phi_0 = h/2e$ is the magnetic flux quantum. The ratio E_C/E_J determines the anharmonicity of the qubit.

In Fig. 1(c) a probe field of frequency ω_p is fed into the transmission line. The pump field of frequency ω_{pump} is applied to the on-chip flux line, sinusoidally modulating

the transition frequency of the qubit. The key parameters are summarized in Table I.

III. THEORETICAL DESCRIPTION

Let us now consider the qubit Hamiltonian, with details presented in Appendix A. Due to the mirror, the transmission-line voltage at the point of coupling the qubit, $x = L$, is proportional to $\cos(\omega_p L/v)$. When this factor is zero, this gives the node frequency ω_{node} , with $\cos(\omega_{\text{node}} L/v) = 0$. For small frequency offset,

$$\Delta\omega = \omega_p - \omega_{\text{node}} \ll \omega_p, \quad (2)$$

TABLE I. Table of controllable parameters. $\omega_{\text{node}} = 4.75 \text{ GHz } 2\pi$.

Value	Description	Range
ω_{10}	Qubit frequency, $\omega_{10} = \omega_{10}(V)$	$\simeq \omega_{\text{node}}$
δ	Pump amplitude; $\delta = \delta(P_{\text{pump}})$	$\sim 0.1 \text{ GHz } 2\pi$
ω_{pump}	Pump frequency	$< 0.1 \text{ GHz } 2\pi$
ω_p	Probe frequency	$\simeq \omega_{\text{node}}$

we can expand the cosine into series; then instead of $\cos(\omega_p L/v)$, we have $\Delta\omega/\omega_{\text{node}}$. This means that at $\Delta\omega = 0$ the qubit is “hidden” or “decoupled” from the transmission line. So we have the Hamiltonian

$$H = -\frac{B_z}{2}\sigma_z - \frac{B_x}{2}\sigma_x, \quad (3)$$

of which the diagonal part is the energy-level modulation

$$B_z/\hbar = \omega_{10} + \delta \sin \omega_{\text{pump}}t, \quad (4)$$

and the off-diagonal part describes the coupling to the probe signal

$$B_x/\hbar = G \sin \omega_p t. \quad (5)$$

Importantly, here the coupling constant G is proportional to the frequency offset $\Delta\omega$,

$$G = G_0 \frac{\Delta\omega}{\omega_{\text{node}}}, \quad (6)$$

and G_0 is proportional to the probe signal amplitude.

The observable value is the reflection coefficient r , namely, its deviation from 1. The impact of the qubit is in suppressing r . Thus, following Refs. [26,27,32], we associate the reflection coefficient to the qubit upper-level occupation probability P_1 . This will be analyzed in the following section.

IV. LZSM INTERFERENCE MEETS MULTIPHOTON EXCITATIONS

To remove the fast driving from the Hamiltonian, we perform the unitary transformation $U = \exp(-i\omega_p \sigma_z t/2)$ and the rotating-wave approximation [27,39]. The new Hamiltonian takes the form

$$H_1 = -\frac{\hbar\widetilde{\Delta\omega}}{2}\sigma_z + \frac{\hbar G}{2}\sigma_x, \quad (7)$$

where

$$\widetilde{\Delta\omega} = \Delta\omega + f(t), \quad (8)$$

$$\Delta\omega = \omega_p - \omega_{10}, \quad (9)$$

$$f(t) = \delta \sin \omega_{\text{pump}}t. \quad (10)$$

The eigenstates of the Hamiltonian H_1 can be called dressed states, since they incorporate the microwave driving into the qubit-like Hamiltonian (7). These dressed states have energy levels derived from Eq. (7):

$$\widetilde{E}_{\pm} = \pm \frac{\hbar}{2} \sqrt{G^2 + \widetilde{\Delta\omega}^2}. \quad (11)$$

These are illustrated in Fig. 2.

The dynamics of the system, implied in Fig. 2, can be conveniently described in terms of LZSM interference [20]. Being driven by the slow signal $f(t)$, the system periodically evolves around $\widetilde{\Delta\omega} = \Delta\omega$. When the system comes around the avoided-level crossing, where the energy difference $\Delta\widetilde{E} = \widetilde{E}_+ - \widetilde{E}_-$ has a minimum equal to $\hbar G$, the system can be partially excited by means of LZSM transitions. Periodically traversing the avoided-level crossing produces interference.

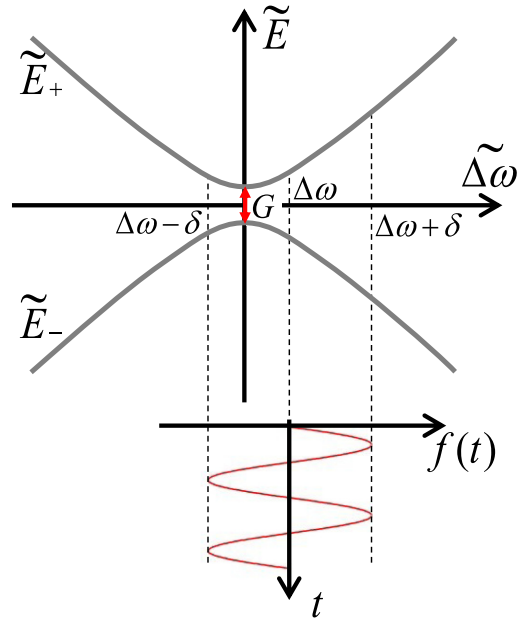


FIG. 2. Dressed-state energy levels \widetilde{E}_{\pm} as a function of the bias $\widetilde{\Delta\omega}$. Sinusoidal driving $f(t)$, shown at the bottom, makes the system evolve periodically between $\Delta\omega - \delta$ and $\Delta\omega + \delta$. For small energy-level splitting G and strong driving (with large amplitude δ), the resonant excitation of the system can equivalently be described either in terms of sequential LZSM transitions or in terms of multiphoton excitations, at $\Delta\omega = k\omega_{\text{pump}}$.

This is described by the phase, accumulated by the vector-state during one period,

$$\zeta = \int_0^{2\pi/\omega_{\text{pump}}} dt \Delta\widetilde{E}/\hbar \approx \Delta\omega \frac{2\pi}{\omega_{\text{pump}}}. \quad (12)$$

Here the approximation means the assumption of small splitting and strong driving: $G \ll \delta$. When the phase ζ equals to $2\pi k$, with an integer k , the system is resonantly excited. Then from $\zeta = 2\pi k$ the resonance condition becomes

$$\Delta\omega = k\omega_{\text{pump}}. \quad (13)$$

This can be interpreted as a multiphoton excitation, meaning that the system is resonantly excited when the dressed energy gap $\hbar\Delta\omega$ equals the energy of k photons, $k\hbar\omega_{\text{pump}}$.

Quantitatively, from the stationary solution of the Bloch equations with the Hamiltonian H_1 , in the rotating-wave approximation, for the upper-level occupation probability we have (see, e.g., Refs. [40,41]):

$$P_1 = \frac{1}{2} \sum_{k=-\infty}^{\infty} \frac{G_k^2}{G_k^2 + [\Delta\omega - k\omega_{\text{pump}}]^2 \frac{\Gamma_1}{\Gamma_2} + \Gamma_1 \Gamma_2}, \quad (14)$$

where the renormalized driving amplitude

$$G_k = G J_k(\delta/\omega_{\text{pump}}), \quad (15)$$

follows the oscillating Bessel function J_k of the first kind; Γ_1 and $\Gamma_2 = \Gamma_1/2 + \Gamma_{\phi}$ are the relaxation and decoherence rates,

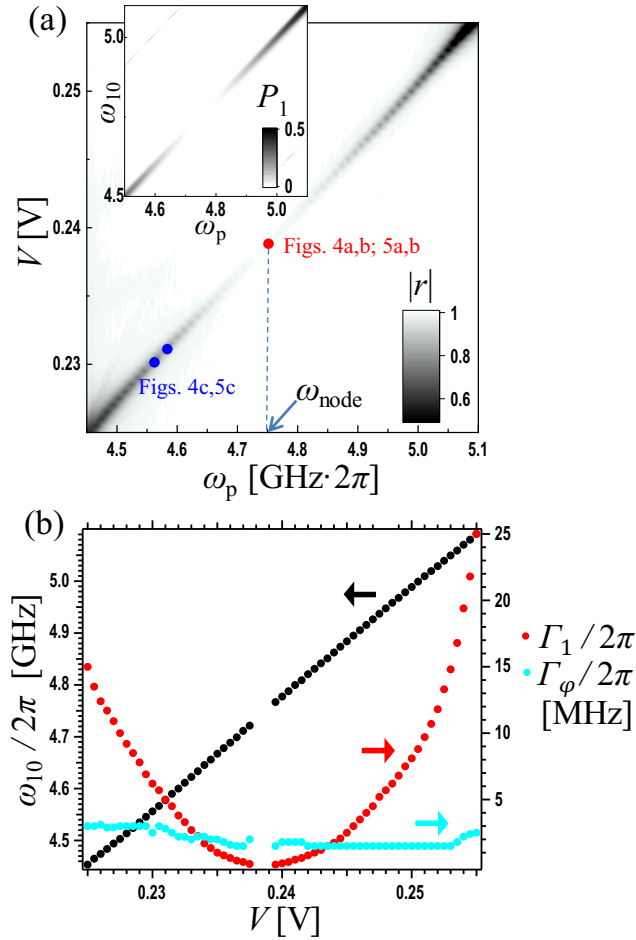


FIG. 3. Spectroscopy of the system. (a) Amplitude of the reflection coefficient $|r|$ at a coherent probe power of -130 dBm as a function of probe frequency ω_p and qubit frequency ω_{10} (controlled by the voltage V). The spectroscopy shows how the response disappears when the qubit ends up at a node for the EM field around $\omega_p = \omega_{\text{node}} \simeq 4.75 \text{ GHz } 2\pi$, denoted by the dashed line marker. The red dot indicates the qubit bias point in Figs. 4(a) and 4(b) and Figs. 5(a) and 5(b). The blue dots correspond to the qubit bias point in Fig. 4(c) and Fig. 5(c), respectively. The inset shows the calculated qubit upper-level occupation probability P_1 as a function of the probe frequency ω_p and the qubit frequency ω_{10} (both in $\text{GHz } 2\pi$). (b) For a given bias voltage in (a), it is a Lorentzian dip (data not shown) indicating that the qubit reflects the resonant probe field. The qubit acts as a mirror, reflect the resonant field. We extract the resonant frequency ω_{10} , relaxation rate Γ_1 , and pure dephasing rate Γ_ϕ following Ref. [42], taking into account the effect of the Rabi frequency. In particular, we convert the probe power to Rabi frequency at a resonant frequency of 5.05 GHz using calibration data in Ref. [10] (same sample, but in a different cool down). Moreover, the Rabi frequency at each resonant frequency is given by Eq. (4). Finally, we see $\omega_{10} \propto V$; however, in general, for the wide range of voltage bias, this is not the case; see details of the flux dependence in Ref. [10].

with the pure dephasing rate Γ_ϕ being much smaller than Γ_1 . One can see that the maximum of P_1 is indeed defined by the condition (13). With this formula, Eq. (14), we plot theoretical graphs in Figs. 3, 4, and 5. For details see Appendix B.

V. MEASUREMENTS

We first perform single-tone spectroscopy of the qubit-mirror system. In Fig. 3 the resonant frequency of the qubit is tuned by voltage. As the voltage increases, the linewidth of the qubit decreases from a finite linewidth to zero, and then increases back to a finite linewidth. At the frequency where the linewidth vanishes, around $\omega_{10} = \omega_{\text{node}} \simeq 4.75 \text{ GHz } 2\pi$, the qubit is located at the node of the EM field, as indicated by the vertical dashed line, where it is hiding from the EM field.

By using two-tone spectroscopy [10], we know that $E_C/h \simeq 324 \text{ MHz}$. For $\omega_{10}/2\pi = 4.75 \text{ GHz}$, the corresponding Josephson energy is $E_J/h \simeq 9.9 \text{ GHz}$.

After the basic characterization of the system, we want to study the spectrum as a function of the following parameters: qubit frequency ω_{10} , pump amplitude δ , pump frequency ω_{pump} , and probe frequency ω_p . For spectroscopy, we always use the probe power of -130 dBm in experiments.

To start, we set the qubit frequency corresponding to the node as a working point, where $\omega_{10} = \omega_{\text{node}}$. We then apply a sinusoidal flux pump at a fixed power to the qubit and sweep the pump frequency from 1 MHz to 100 MHz . At the same time, we perform the spectroscopy of the system using a weak field, with the frequency ω_p near the qubit frequency.

We show the amplitude reflection coefficient $|r|$ in Figs. 4(a) and 4(b) as a function of ω_{pump} and ω_p in Fig. 4(a) for $P_{\text{pump}} = -45 \text{ dBm}$ and in Fig. 4(b) for $P_{\text{pump}} = -38 \text{ dBm}$. We observed LZSM interference fringes. These interference fringes can be interpreted as multiphoton resonances in the dressed qubit. Multiphoton resonances appear at $\omega_p = \omega_{10} \pm k \omega_{\text{pump}}$, where k is the order, as indicated in the figures. The zero order, where $k = 0$, is missing, which is a key feature here, different from conventional LZSM interference fringes. In Fig. 4(b) we can clearly see the order k up to ± 4 . We increase the pump power in Fig. 4 from -45 dBm in Fig. 4(a) to -38 dBm in Fig. 4(b), and the gap between negative k and positive k fringes becomes wider. Indeed, the stronger the pump power, the wider they separate (data not shown). The power in Figs. 4(a) and 4(b) differs by 7 dB , meaning that their pump amplitude δ differs by a factor of 2.2 . This is also what happens in the theory calculation plots. In this sense, this separation can be used to calibrate the pump power.

In Fig. 4(c) we bias the qubit at around 4.58 GHz , red detuned from the node, and we then see asymmetric interference fringes. At this bias point, when the qubit is pumped in the negative part of the sinusoidal, the qubit is pumped toward the larger linewidth regime; see Fig. 3. However, when the qubit is pumped in the positive part of the sinusoidal, the qubit is pumped towards the zero-linewidth regime; therefore, we can see that the interference fringes vanish near ω_{node} . In addition, in contrast to Fig. 4(a) and 4(b), the $k = 0$ zero Rabi sideband appears in Fig. 4(c) because there the qubit is biased away from the node.

Next, we keep the pump frequency ω_{pump} constant. We change the power of the pump P_{pump} from -70 dBm to -30 dBm and probe the system with a weak field near the resonance frequency of the qubit. In Fig. 5 we show in Fig. 5(a) and Fig. 5(b) $\omega_{\text{pump}}/2\pi = 10 \text{ MHz}$ and 100 MHz for the qubit frequency at the node ω_{node} , and $\omega_{\text{pump}}/2\pi = 10 \text{ MHz}$ for

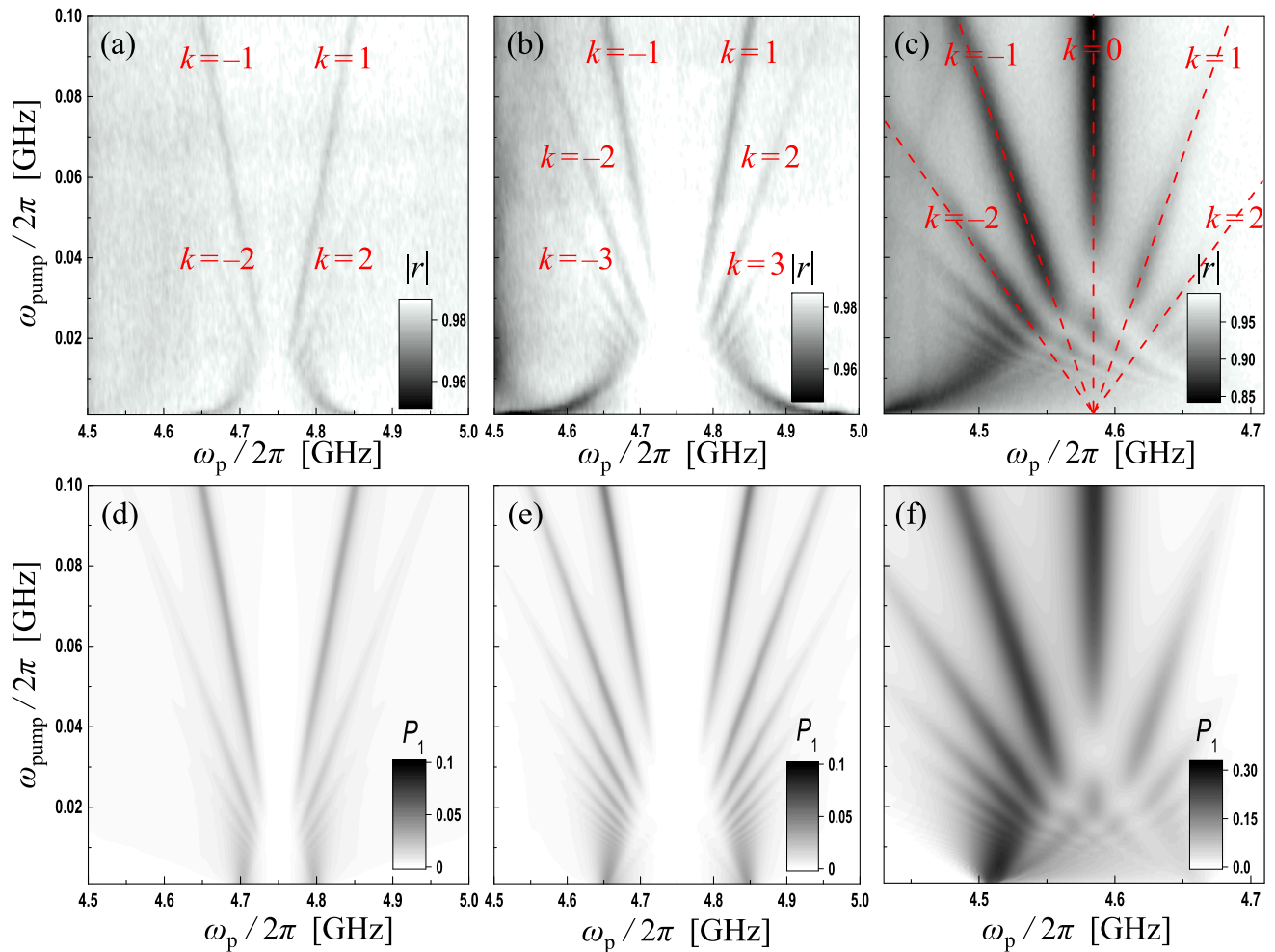


FIG. 4. Sinusoidal modulation of the qubit by flux pumping, with the resonance frequency at a fixed pump power P_{pump} . Amplitude reflection coefficient $|r|$ for a weak coherent probe as a function of the probe frequency ω_p and pump frequency ω_{pump} ; panels (a)–(c) are experimental data, and (d)–(f) are our theoretical calculations. (a) Qubit biased at $\omega_{\text{node}} = 4.75 \text{ GHz} 2\pi$; the flux pump power is fixed at $P_{\text{pump}} = -45 \text{ dBm}$. (b) Qubit biased at the node around 4.75 GHz with $P_{\text{pump}} = -38 \text{ dBm}$. (c) Qubit biased at 4.58 GHz , red detuned from the node, and $P_{\text{pump}} = -38 \text{ dBm}$. Note that the k -dependent multiphoton resonances emerge: $\Delta\omega = k\omega_{\text{pump}}$, which are shown by the inclined red dashed lines. In panel (b) we can see Rabi sidebands for k from -4 to 4 . In panels (a) and (b), the $k = 0$ Rabi sideband disappears, whereas in panel (c) the $k = 0$ Rabi sideband appears. For panels (a) and (b) the positive k and negative k fringes are symmetric, whereas in panel (c) the interference fringes are not symmetric along $k = 0$. As the fringes approach the node regime, near 4.75 GHz , they become weaker. In panels (d)–(f) we show the respective calculated qubit upper-level occupation probabilities P_1 . Experimentally, the pump power reached at the sample is slightly frequency dependent. The low-frequency flux pumping drive (say, 1 MHz) has about 1 dB higher power than the high-frequency flux pumping drive (say, 20 MHz). Therefore, we see that the ω_{pump} at low frequency has more shift δ in the data.

the qubit frequency red detuned from ω_{node} in Fig. 5(c). These plots show the amplitude reflection coefficient $|r|$ as a function of the probe frequency ω_p and the pump power P_{pump} . In Figs. 5(a) and 5(b), when the flux pump is weak (this corresponds to a small change of the qubit resonance frequency) there are no interference fringes in the interference pattern. This can be explained using Fig. 3, where the “node regime” corresponds from 4.7 GHz to 4.8 GHz , and there is no response for a weak flux pump. When the pump power increases, this corresponds to larger changes of the resonance frequency, and we see the Rabi-splitting-like behavior in Fig. 5(a). In Fig. 5(b) Rabi sidebands at $k = -2, -1, +1, +2$ appear. These match the condition $\Delta\omega = k\omega_{\text{pump}}$. The higher

the pump power, the more resolved the sideband k becomes. In Fig. 5(c), when we bias the qubit frequency away from ω_{node} , the interference fringes become weaker as the probe frequency approaches the node frequency at 4.75 GHz .

VI. CONCLUSIONS

In conclusion, we investigate the LZSM interferometry of a superconducting qubit in a semi-infinite transmission line terminated by a mirror. When the qubit frequency is set to the node of the EM field, after flux pumping the qubit frequency, remarkable interference patterns emerge, which can be interpreted as multiphoton resonances in the dressed

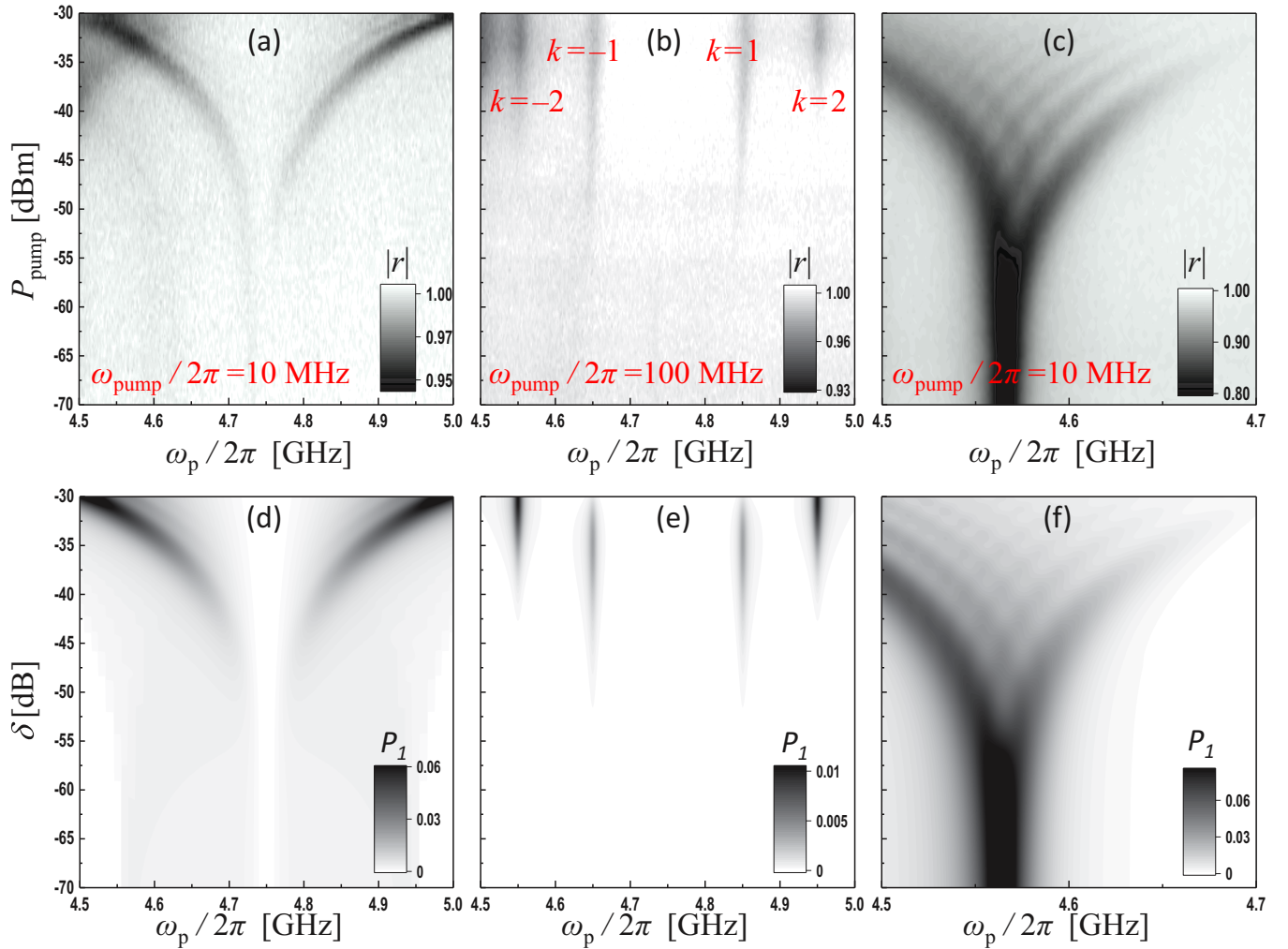


FIG. 5. Sinusoidal modulation of the qubit by flux pumping at the resonance frequency at a fixed pump frequency ω_{pump} . The plots show the amplitude of the reflection coefficient $|r|$ for a weak coherent probe versus the probe frequency ω_p and pump power P_{pump} . Panels (a)–(c) correspond to experiments and (d)–(f) to theory. Panels (a) and (b) are at the node around 4.75 GHz with $\omega_{\text{pump}}/2\pi = 10$ MHz and 100 MHz, respectively. Note the Rabi sidebands at $\Delta\omega = k\omega_{\text{pump}}$, with $k = -2, -1, +1, +2$. The higher the pump power, the more resolved sidebands are visible. Note the onset of the Rabi sidebands for $k = \pm 1$ and $k = \pm 2$, for -45 dBm and -35 dBm, respectively. (c) Red detuned from the node at 4.56 GHz. In panels (a) and (c), we observe Rabi-like splittings as the pump power increases. In panel (a) we see a symmetric splitting, whereas in panel (c) there are several asymmetric splittings. In panel (c), as the fringes approach ω_{node} , they become weaker. In panels (d)–(f) we show the respective calculated qubit upper-level occupation probabilities P_1 .

qubit. We see multiphoton resonances up to the fourth order. Since the qubit interferes with its mirror image, the zero-order photon resonance disappears. Such an effect would not appear in the case of an infinite transmission line. One of the advantages of this atom-mirror arrangement is that we can effectively manipulate the absorption properties of the two-level atom, providing a novel way to manipulate the quantum states.

ACKNOWLEDGMENTS

I.-C.H. and J.C.C. would like to thank I. A. Yu and C.-Y. Mou for fruitful discussions. S.N.S. is grateful to A. I. Krivchikov for useful discussions. This work was financially supported by the Center for Quantum Technology from the Featured Areas Research Center Program within the frame-

work of the Higher Education Sprout Project by the Ministry of Education (MOE) in Taiwan. I.-C.H. acknowledges financial support from the MOST of Taiwan under Project 109-2636-M-007-007. J.C.C. acknowledges financial support from the MOST of Taiwan under Project 107-2112-M-007-003-MY3. O.V.I., M.A.N., and S.N.S. acknowledge partial support by the grant of the President of Ukraine (Grant No. F84/185-2019). O.V.I. and S.N.S. are supported in part by the Army Research Office (ARO) (Grant No. W911NF2010261). F.N. is supported in part by NTT Research, Army Research Office (ARO) (Grant No. W911NF-18-1-0358), Japan Science and Technology Agency (JST) (via Q-LEAP and the CREST Grant No. JPMJCR1676), Japan Society for the Promotion of Science (JSPS) (via the KAKENHI Grant No. JP20H00134, and the grant JSPS-RFBR Grant No. JPJSBP120194828), and the Grant No. FQXi-IAF19-06 from the Foundational

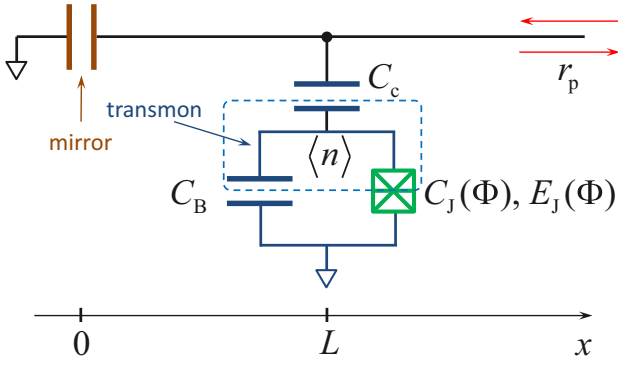


FIG. 6. Schematic diagram of a capacitively shunted charge qubit in front of a mirror. The qubit and the transmission line are coupled through the capacitance C_c . The transmission line is biased by a probe signal, and its reflection coefficient r_p is measured. The line is terminated by a capacitor, playing the role of a mirror. The transmon qubit consists of Josephson junctions, described by the flux-dependent capacitance $C_J(\Phi)$, shunted by a capacitance C_B .

Questions Institute Fund (FQXi), a donor-advised fund of the Silicon Valley Community Foundation.

APPENDIX A: HAMILTONIAN

In this Appendix we describe how we obtain the Hamiltonian (3) for a qubit in front of a mirror, schematically shown in Fig. 6; see also Ref. [43].

The transmission line is described by the voltage $V(x, t)$ and current $I(x, t)$:

$$V(x, t) = V(x)e^{i\omega_p t}, \quad I(x, t) = I(x)e^{i\omega_p t}, \quad (\text{A1})$$

with

$$V(x) = V_+ e^{ikx} + V_- e^{-ikx}, \quad (\text{A2})$$

$$I(x) = -\frac{V_+}{Z_0} e^{ikx} + \frac{V_-}{Z_0} e^{-ikx}, \quad (\text{A3})$$

where $k = \omega_p/v$. Due to the mirror at $x = 0$, we have $I(0) = 0$, $V_- = V_+$, and $V(x) = 2V_+ \cos(kx)$ for $x \in (0, L)$.

The transmon is described by the number $\langle n \rangle$ of Cooper pairs on it, with the number operator n given by the Pauli matrix [44]

$$n = \left(\frac{E_J}{32E_C} \right)^{1/4} \sigma_x. \quad (\text{A4})$$

If we take here $\hbar\omega_{10} \approx \sqrt{8E_C E_J}$, we have

$$n = \sqrt{\frac{\hbar\omega_{10}}{E_C}} \sigma_x. \quad (\text{A5})$$

Then, writing the charges of the respective capacitor plates, we obtain the island voltage [45]

$$V_1 = \frac{2e}{C_\Sigma} n - \frac{C_c}{C_\Sigma} V(L, t), \quad (\text{A6})$$

where $C_\Sigma = C_J + C_B + C_c$. With this we can write the Hamiltonian of the transmon qubit coupled to the transmission line,

which can be rewritten (omitting c-numbers) as follows:

$$\begin{aligned} H_c &= \frac{1}{2} C_c [V(L, t) - V_1]^2 \rightarrow C_c V(L, t) V_1 \\ &\rightarrow eV_+ \frac{C_c}{C_\Sigma} \sqrt{\frac{\hbar\omega_{10}}{E_C}} \cos\left(\frac{\omega_p L}{v}\right) \sin(\omega_p t) \sigma_x. \end{aligned} \quad (\text{A7})$$

For a small frequency offset, $\Delta\omega = \omega_p - \omega_{\text{node}} \ll \omega_p$, we have

$$\cos\left(\frac{\omega_p L}{v}\right) \approx \frac{\pi}{2} \frac{\Delta\omega}{\omega_{\text{node}}}, \quad (\text{A8})$$

with $\cos(\omega_{\text{node}} L/v) = 0$. Then the Hamiltonian (A7) describes the off-diagonal part of the transmon Hamiltonian (3) with

$$G = G_0 \frac{\Delta\omega}{\omega_{\text{node}}},$$

$$G_0(V_+) = \frac{\pi}{\hbar} \frac{C_c}{C_\Sigma} \sqrt{\frac{\hbar\omega_{10}}{E_C}} eV_+. \quad (\text{A9})$$

This is written in the main text as Eq. (5).

Consider next the diagonal part of the transmon Hamiltonian given by the energy-level splitting in Eq. (1).

The flux contains the dc and ac components, $\Phi = \Phi_{\text{dc}} + \Phi_{\text{ac}} \sin(\omega_{\text{pump}} t)$. Assuming the latter being a small value, we obtain

$$\hbar\omega_{10} = \hbar\omega_{10}(\Phi_{\text{dc}}) + \hbar\delta(\Phi_{\text{ac}}) \sin(\omega_{\text{pump}} t), \quad (\text{A10})$$

where $\delta(\Phi_{\text{ac}}) \propto \Phi_{\text{ac}}$ is the driving amplitude. This is written in the main text as Eq. (4).

APPENDIX B: DETAILS OF THE CALCULATIONS AND THE ROLE OF NONLINEARITY

For obtaining theoretical graphs (Figs. 3, 4, and 5), we solve Eq. (14) in each point of the 2D plots. The amplitude δ was defined from the lowest pump frequency ω_{pump} , where the first resonance lines vanish, as shown with the yellow double arrow in Fig. 7(a). We choose this because in the experiment, the sidebands become shifted at low ω_{pump} . We assume that the shift is due to the nonlinearity and take this into account as $\delta = \delta(\omega_{\text{pump}})$ below.

The relaxation rate Γ_1 and the dephasing rate Γ_ϕ are estimated from the experimental data in Fig. 3(b). We find Γ_2 from the expression $\Gamma_2 = \Gamma_1/2 + \Gamma_\phi$. The parameter G_0 is the fitting parameter, and we take this equal to 0.1 GHz h .

In Fig. 7 we show details of how we calculate the interferograms and compare with the experiments. Figure 7(b) is the same as Fig. 4(f), in Fig. 7(c) we take into account the nonlinearity, and in Figs. 7(c)–7(e) we can see a good agreement between the location and relative depth of the resonances in the experiment (denoted as Expt) and theory (denoted as Thry) for the high ω_{pump} frequency, but in the area with low ω_{pump} we can see increasing the space between the sidebands. In the theory, the location of the sidebands with $\omega_{\text{pump}} = 0$ is defined by the amplitude δ , and these are located at $\omega_{10} \pm \delta$. From this difference we suggested that in the area of low pump frequency, $\omega_{\text{pump}} \rightarrow 0$, the amplitude δ is increased. We take such nonlinearity into account and use this dependence

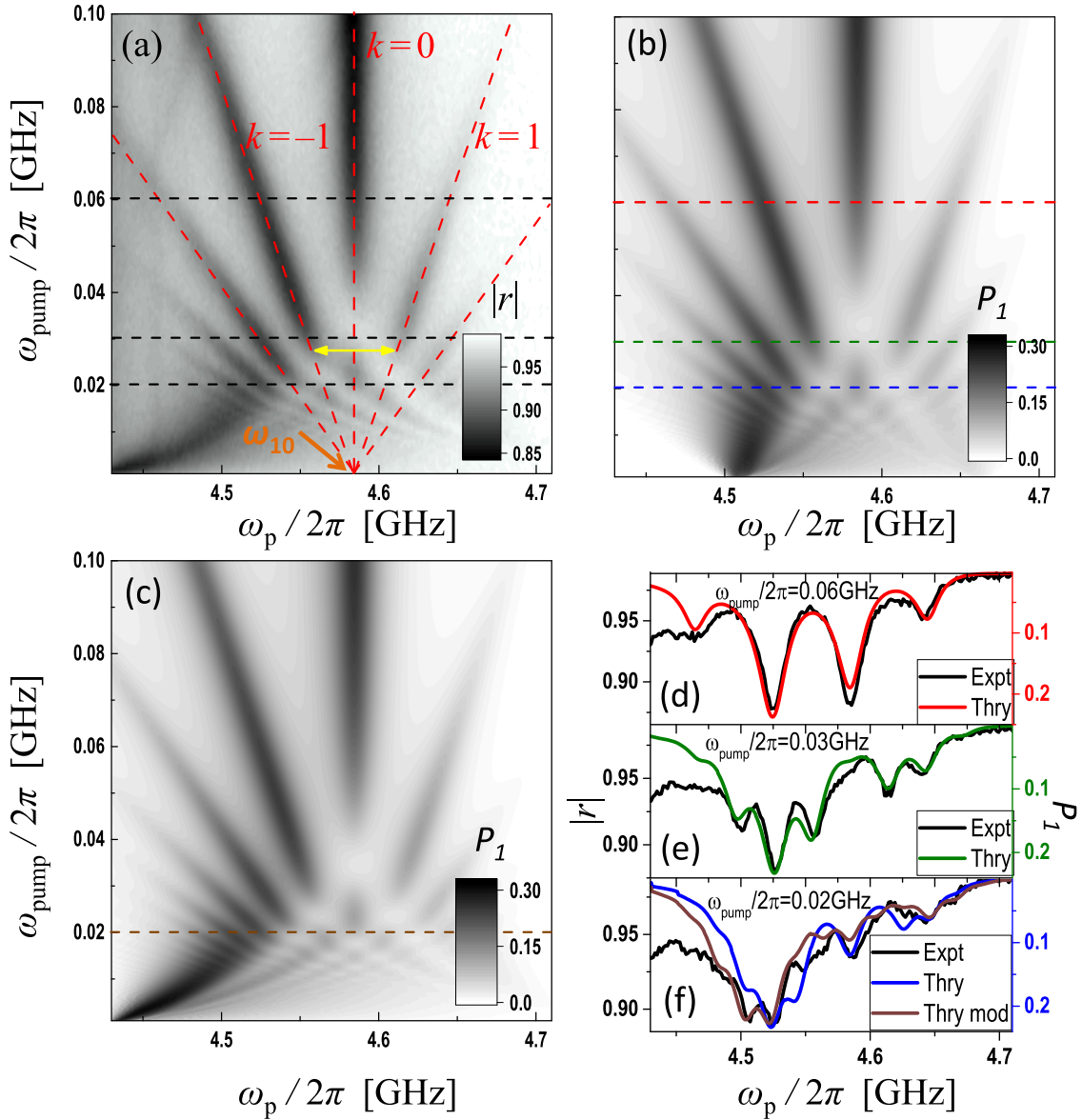


FIG. 7. (a) Reflection coefficient as a function of the probe frequency ω_p and the pump frequency ω_{pump} , as in Fig. 4(c). (b) Upper-level occupation probability P_1 , calculated for the same parameters as Fig. 4(f). (c) Similar interferogram with taking into account the phenomenological nonlinearity, Eq. (B1). (d)–(f) The cross sections taken at different values of the pump frequency, $\omega_{\text{pump}}/2\pi = 60, 30, 20$ MHz, respectively. Panels (d) and (e) demonstrate agreement of the theoretical calculations (red and green curves) with the experimental data from (a) (black curves) for high-pump frequency, while (f) demonstrates the deviation of the theory with constant δ (blue curve) from the experiment. The modified theory, with nonlinear $\delta'(\omega_{\text{pump}})$, the brown curve, is in much better agreement.

for obtaining a better agreement between the theory and the experiments in the low pumping frequency regime. For this, instead of constant δ , we empirically consider

$$\delta'(\omega_{\text{pump}}) = \delta + (1 - \omega_{\text{pump}}/G_0)^8 \delta. \quad (\text{B1})$$

Then the obtained interferogram [Fig. 7(c)] is in agreement with the experimental Fig. 7(a). This agreement can also be seen in Fig. 7(f), where the brown curve is for the modified theory (denoted as Thry mod).

APPENDIX C: MICROWAVE SIMULATION OF END CAPACITOR USING HIGH-FREQUENCY STRUCTURE SIMULATOR

We use the 3D electromagnetic simulation software “High-Frequency Structure Simulator” to simulate the end capacitance in the transmission line and the phase shift caused by it. The value of the capacitance (mirror) is about 1.3 fF [see Fig. 8(b)], and the phase shift caused by the mirror is less than 0.3° ; see Fig. 8(c). As expected, the phase shift is very close to the phase shift produced by an ideal mirror, which is zero.

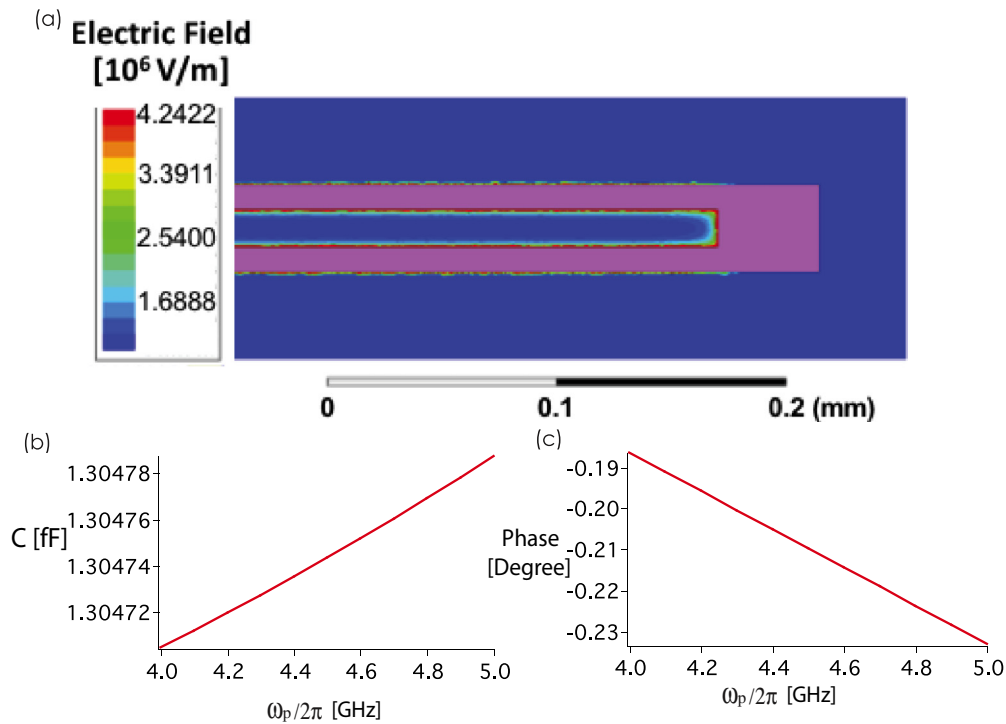


FIG. 8. Simulation using High-Frequency Structure Simulator. (a) Electric field distribution of a transmission line with an end capacitor, acting as a mirror. (b) The capacitance calculated from the simulated input impedance Z , where $Z = 1/(\omega C)$. (c) Phase response of the simulated reflection coefficient caused by the end capacitor.

[1] X. Gu, A. F. Kockum, A. Miranowicz, Y.-X. Liu, and F. Nori, Microwave photonics with superconducting quantum circuits, *Phys. Rep.* **718–719**, 1 (2017).

[2] O. Astafiev, A. M. Zagoskin, A. A. Abdumalikov, Y. A. Pashkin, T. Yamamoto, K. Inomata, Y. Nakamura, and J. S. Tsai, Resonance fluorescence of a single artificial atom, *Science* **327**, 840 (2010).

[3] K. Lalumiere, B. C. Sanders, A. F. van Loo, A. Fedorov, A. Wallraff, and A. Blais, Input-output theory for waveguide QED with an ensemble of inhomogeneous atoms, *Phys. Rev. A* **88**, 043806 (2013).

[4] I.-C. Hoi, A. F. Kockum, L. Tornberg, A. Pourkabirian, G. Johansson, P. Delsing, and C. M. Wilson, Probing the quantum vacuum with an artificial atom in front of a mirror, *Nat. Phys.* **11**, 1045 (2015).

[5] M. Mirhosseini, E. Kim, X. Zhang, A. Sipahigil, P. B. Dieterle, A. J. Keller, A. Asenjo-Garcia, D. E. Chang, and O. Painter, Cavity quantum electrodynamics with atom-like mirrors, *Nature (London)* **569**, 692 (2019).

[6] I.-C. Hoi, C. M. Wilson, G. Johansson, T. Palomaki, B. Peropadre, and P. Delsing, Demonstration of a Single-Photon Router in the Microwave Regime, *Phys. Rev. Lett.* **107**, 073601 (2011).

[7] I.-C. Hoi, T. Palomaki, J. Lindkvist, G. Johansson, P. Delsing, and C. M. Wilson, Generation of Nonclassical Microwave States Using an Artificial Atom in 1D Open Space, *Phys. Rev. Lett.* **108**, 263601 (2012).

[8] I.-C. Hoi, A. F. Kockum, T. Palomaki, T. M. Stace, B. Fan, L. Tornberg, S. R. Sathyamoorthy, G. Johansson, P. Delsing, and C. M. Wilson, Giant Cross-Kerr Effect for Propagating Microwaves Induced by an Artificial Atom, *Phys. Rev. Lett.* **111**, 053601 (2013).

[9] P. Y. Wen, A. F. Kockum, H. Ian, J. C. Chen, F. Nori, and I.-C. Hoi, Reflective Amplification Without Population Inversion from a Strongly Driven Superconducting Qubit, *Phys. Rev. Lett.* **120**, 063603 (2018).

[10] P. Y. Wen, K.-T. Lin, A. F. Kockum, B. Suri, H. Ian, J. C. Chen, S. Y. Mao, C. C. Chiu, P. Delsing, F. Nori, G.-D. Lin, and I.-C. Hoi, Large Collective Lamb Shift of Two Distant Superconducting Artificial Atoms, *Phys. Rev. Lett.* **123**, 233602 (2019).

[11] P. Forn-Diaz, J. J. Garcia-Ripoll, B. Peropadre, J.-L. Orgiazzi, M. A. Yurtalan, R. Belyansky, C. M. Wilson, and A. Lupascu, Ultrastrong coupling of a single artificial atom to an electromagnetic continuum in the nonperturbative regime, *Nat. Phys.* **13**, 39 (2017).

[12] D. Szombati, A. Gomez Friero, C. Müller, T. Jones, M. Jerger, and A. Fedorov, Quantum Riffing: Protecting a Qubit from Measurement Back Action, *Phys. Rev. Lett.* **124**, 070401 (2020).

[13] D. S. Karpov, V. Y. Monarkha, D. Szombati, A. G. Friero, A. N. Omelyanchouk, E. Il'ichev, A. Fedorov, and S. N. Shevchenko, Probabilistic motional averaging, *Eur. Phys. J. B* **93**, 49 (2020).

[14] J. R. Johansson, G. Johansson, C. M. Wilson, and F. Nori, Dynamical Casimir Effect in a Superconducting Coplanar Waveguide, *Phys. Rev. Lett.* **103**, 147003 (2009).

- [15] J. R. Johansson, G. Johansson, C. M. Wilson, and F. Nori, Dynamical Casimir effect in superconducting microwave circuits, *Phys. Rev. A* **82**, 052509 (2010).
- [16] C. M. Wilson, G. Johansson, A. Pourkabirian, M. Simoen, J. R. Johansson, T. Duty, F. Nori, and P. Delsing, Observation of the dynamical Casimir effect in a superconducting circuit, *Nature (London)* **479**, 376 (2011).
- [17] P. Lähteenmäki, G. S. Paraoanu, J. Hassel, and P. J. Hakonen, Dynamical Casimir effect in a Josephson metamaterial, *Proc. Natl. Acad. Sci. USA* **110**, 4234 (2013).
- [18] W. D. Oliver, Y. Yu, J. C. Lee, K. K. Berggren, L. S. Levitov, and T. P. Orlando, Mach-Zehnder interferometry in a strongly driven superconducting qubit, *Science* **310**, 1653 (2005).
- [19] M. Sillanpää, T. Lehtinen, A. Paila, Y. Makhlin, and P. Hakonen, Continuous-Time Monitoring of Landau-Zener Interference in a Cooper-Pair Box, *Phys. Rev. Lett.* **96**, 187002 (2006).
- [20] S. N. Shevchenko, S. Ashhab, and F. Nori, Landau-Zener-Stückelberg interferometry, *Phys. Rep.* **492**, 1 (2010).
- [21] C. S. E. van Ditzhuijzen, A. Tauschinsky, and H. B. van Linden van den Heuvell, Observation of Stückelberg oscillations in dipole-dipole interactions, *Phys. Rev. A* **80**, 063407 (2009).
- [22] A. Bogan, S. Studenikin, M. Korkusinski, L. Gaudreau, P. Zawadzki, A. S. Sachrajda, L. Tracy, J. Reno, and T. Hargett, Landau-Zener-Stückelberg-Majorana Interferometry of a Single Hole, *Phys. Rev. Lett.* **120**, 207701 (2018).
- [23] X. Mi, S. Kohler, and J. R. Petta, Landau-Zener interferometry of valley-orbit states in Si/SiGe double quantum dots, *Phys. Rev. B* **98**, 161404(R) (2018).
- [24] K. Ono, S. N. Shevchenko, T. Mori, S. Moriyama, and F. Nori, Quantum Interferometry with a g -Factor-Tunable Spin Qubit, *Phys. Rev. Lett.* **122**, 207703 (2019).
- [25] R. M. Otxoa, A. Chatterjee, S. N. Shevchenko, S. Barraud, F. Nori, and M. F. Gonzalez-Zalba, Quantum interference capacitor based on double-passage Landau-Zener-Stückelberg-Majorana interferometry, *Phys. Rev. B* **100**, 205425 (2019).
- [26] J. Li, M. P. Silveri, K. S. Kumar, J.-M. Pirkkalainen, A. Vepsäläinen, W. C. Chien, J. Tuorila, M. A. Sillanpää, P. J. Hakonen, E. V. Thuneberg, and G. S. Paraoanu, Motional averaging in a superconducting qubit, *Nat. Commun.* **4**, 1420 (2013).
- [27] M. Silveri, K. Kumar, J. Tuorila, J. Li, A. Vepsäläinen, E. Thuneberg, and G. Paraoanu, Stückelberg interference in a superconducting qubit under periodic latching modulation, *New J. Phys.* **17**, 043058 (2015).
- [28] J. Pan, Y. Fan, Y. Li, X. Dai, X. Wei, Y. Lu, C. Cao, L. Kang, W. Xu, J. Chen, G. Sun, and P. Wu, Dynamically modulated Autler-Townes effect in a transmon qubit, *Phys. Rev. B* **96**, 024502 (2017).
- [29] T. Bera, S. Majumder, S. K. Sahu, and V. Singh, Large flux-mediated coupling in hybrid electromechanical system with a transmon qubit, [arXiv:2001.05700](https://arxiv.org/abs/2001.05700).
- [30] J. Eschner, C. Raab, F. Schmidt-Kaler, and R. Blatt, Light interference from single atoms and their mirror images, *Nature (London)* **413**, 495 (2001).
- [31] L. Y. Gorelik, N. I. Lundin, V. S. Shumeiko, R. I. Shekhter, and M. Jonson, Superconducting Single-Mode Contact as a Microwave-Activated Quantum Interferometer, *Phys. Rev. Lett.* **81**, 2538 (1998).
- [32] T. Wu, Y. Zhou, Y. Xu, S. Liu, and J. Li, Landau-Zener-Stückelberg interference in nonlinear regime, *Chin. Phys. Lett.* **36**, 124204 (2019).
- [33] M. Gong, Y. Zhou, D. Lan, Y. Fan, J. Pan, H. Yu, J. Chen, G. Sun, Y. Yu, S. Han, and P. Wu, Landau-Zener-Stückelberg-Majorana interference in a 3D transmon driven by a chirped microwave, *Appl. Phys. Lett.* **108**, 112602 (2016).
- [34] A. M. Satanin, M. V. Denisenko, A. I. Gelman, and F. Nori, Amplitude and phase effects in Josephson qubits driven by a biharmonic electromagnetic field, *Phys. Rev. B* **90**, 104516 (2014).
- [35] G. Giavaras and Y. Tokura, Spectroscopy of double quantum dot two-spin states by tuning the interdot barrier, *Phys. Rev. B* **99**, 075412 (2019).
- [36] J. Q. You, J. S. Tsai, and F. Nori, Hybridized solid-state qubit in the charge-flux regime, *Phys. Rev. B* **73**, 014510 (2006).
- [37] J. Q. You, X. Hu, S. Ashhab, and F. Nori, Low-decoherence flux qubit, *Phys. Rev. B* **75**, 140515(R) (2007).
- [38] A. F. Kockum and F. Nori, Quantum bits with Josephson junctions, in *Fundamentals and Frontiers of the Josephson Effect*, edited by F. Tafuri (Springer, Cham, 2019), pp. 703–741.
- [39] K. Ono, S. N. Shevchenko, T. Mori, S. Moriyama, and F. Nori, Analog of a quantum heat engine using a single-spin qubit, [arXiv:2008.10181](https://arxiv.org/abs/2008.10181).
- [40] M. P. Silveri, J. A. Tuorila, E. V. Thuneberg, and G. S. Paraoanu, Quantum systems under frequency modulation, *Rep. Prog. Phys.* **80**, 056002 (2017).
- [41] O. V. Ivakhnenko, S. N. Shevchenko, and F. Nori, Simulating quantum dynamical phenomena using classical oscillators: Landau-Zener-Stückelberg-Majorana interferometry, latching modulation, and motional averaging, *Sci. Rep.* **8**, 12218 (2018).
- [42] I.-C. Hoi, Quantum optics with propagating microwaves in superconducting circuits, Ph.D. thesis, Chalmers University of Technology, Sweden, Gothenburg, Sweden, 2013.
- [43] G. Wendin, Quantum information processing with superconducting circuits: A review, *Rep. Progr. Phys.* **80**, 106001 (2017).
- [44] J. Koch, T. M. Yu, J. Gambetta, A. A. Houck, D. I. Schuster, J. Majer, A. Blais, M. H. Devoret, S. M. Girvin, and R. J. Schoelkopf, Charge-insensitive qubit design derived from the Cooper pair box, *Phys. Rev. A* **76**, 042319 (2007).
- [45] S. N. Shevchenko and D. S. Karpov, Thermometry and Memcapacitance with Qubit-Resonator System, *Phys. Rev. Appl.* **10**, 014013 (2018).