








Bulk and surface electronic states in the dosed semimetallic HfTe₂

Zakariae El Youbi ^{1,2} Sung Won Jung,¹ Saumya Mukherjee ^{1,3} Mauro Fanciulli ^{2,4} Jakub Schusser ^{2,5}
Olivier Heckmann,^{2,4} Christine Richter ^{2,4} Ján Minár,⁵ Karol Hricovini ^{2,4} Matthew D. Watson ¹ and Cephise Cacho^{1,*}

¹*Diamond Light Source, Harwell Campus, Didcot, OX11 0DE, United Kingdom*

²*Laboratoire de Physique des Matériaux et des Surfaces, CY Cergy-Paris Université, 5 mail Gay-Lussac, 95031 Cergy-Pontoise, France*

³*Clarendon Laboratory, Department of Physics, University of Oxford, Parks Road, Oxford OX1 3PU, United Kingdom*

⁴*Université Paris-Saclay, CEA, CNRS, LIDYL, 91191, Gif-sur-Yvette, France*

⁵*New Technologies-Research Center, University of West Bohemia, 30614 Pilsen, Czech Republic*



(Received 3 April 2020; revised manuscript received 15 May 2020; accepted 1 June 2020; published 19 June 2020)

The dosing of layered materials with alkali metals has become a commonly used strategy in ARPES experiments. However, precisely what occurs under such conditions, both structurally and electronically, has remained a matter of debate. Here we perform a systematic study of 1T-HfTe₂, a prototypical semimetal of the transition metal dichalcogenide family. By utilizing photon energy-dependent angle-resolved photoemission spectroscopy (ARPES), we have investigated the electronic structure of this material as a function of potassium (K) deposition. From the k_z maps, we observe the appearance of 2D dispersive bands after electron dosing, with an increasing sharpness of the bands, consistent with the wave-function confinement at the topmost layer. In our highest-dosing cases, a monolayerlike electronic structure emerges, presumably as a result of intercalation of the alkali metal. Here, by bringing the topmost valence band below E_F , we can directly measure a band overlap of ~ 0.2 eV. However, 3D bulklike states still contribute to the spectra even after considerable dosing. Our work provides a reference point for the increasingly popular studies of the alkali metal dosing of semimetals using ARPES.

DOI: [10.1103/PhysRevB.101.235431](https://doi.org/10.1103/PhysRevB.101.235431)

I. INTRODUCTION

Alkali metal deposition on layered materials has turned into a commonly used approach in angle-resolved photoemission spectroscopy (ARPES) experiments, due to the possibility to stabilize and tune novel electronic states with properties that can significantly differ from those of the pristine material. It has been shown that dosing can suppress the charge density wave (CDW) phase in TiSe₂, and induce a metal-to-insulator transition alongside with a novel CDW phase in TaS₂ [1]. In the semiconducting black phosphorus, the band gap was tuned via K dosing, prompting the emergence of Dirac fermions due to the surface Stark effect [2–5]. This effect has been announced as a universal mechanism of band-gap engineering in 2D semiconductors [6]. Besides, dimensionality reduction, whether upon alkali metal evaporation, hydrogenation or water vapor exposure has been widely reported [7–12].

It has been suggested that dosing semimetals could be qualitatively different to dosing semiconductors [9]. In semiconductors, the most familiar scenario is “band bending” where a strong variation of the electrostatic potential near the surface

results in the effective spatial confinement and emergence of quantum-well-like states [6,8,12,13]. Whereas in semimetals, the existence of both holelike and electronlike free carriers makes the underlying mechanism complex to predict [9]. On the other hand, in some cases the alkali metals are known to migrate into the van der Waals gaps of the sample, decoupling a top layer with a monolayerlike electronic structure [7].

1T-HfTe₂ is a transition-metal dichalcogenide (TMD) which has a semimetallic electronic structure, with both electronlike and holelike bands crossing the Fermi level [10,14–20]. Early studies of this material were focused on the fundamental properties such as the stoichiometry, lattice constants, transport properties and thermopower [14,15,17,18,21,22]. A recent ARPES study of thin films of HfTe₂ claimed that 1T-HfTe₂ might be classed as a topological Dirac semimetal [19], though the bands observed in measurements of single crystals did not support this [10]. Still, 1T-HfTe₂ shows a notably large and nonsaturating magnetoresistance, resulting from the carrier compensation [20]. Its electronic structure is closely analogous to that of TiSe₂, which exhibits a CDW and can host superconductivity upon electron doping, though no such phase transition have been detected in HfTe₂ to date [15,17,20].

In this paper, we combine high-resolution ARPES measurements and density functional theory (DFT) calculations, which demonstrate the 3D character of the semimetallic ground state of HfTe₂. We then create 2D surface-confined states by sequentially dosing K metal ions on the surface. We observe an increasing sharpness of the bands with dosing

*cephise.cacho@diamond.ac.uk

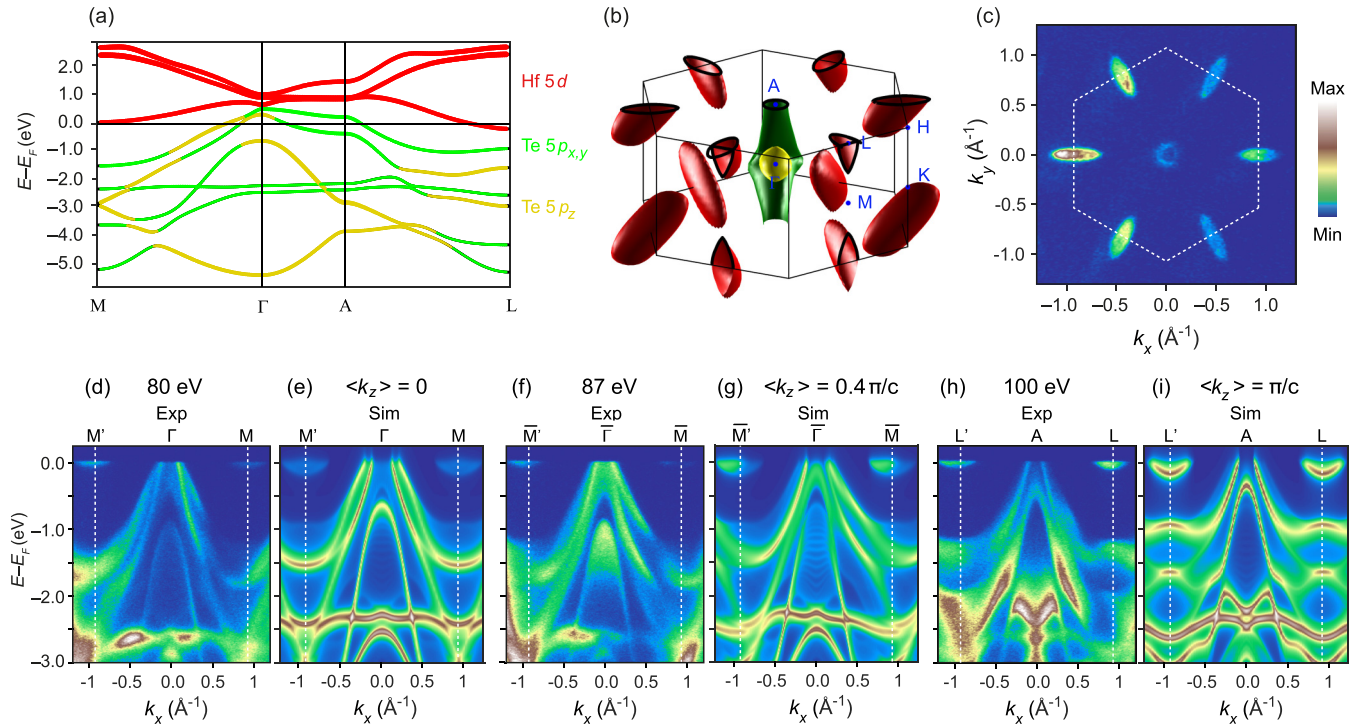


FIG. 1. Electronic structure of 1T-HfTe₂. (a) DFT calculations along M- Γ -A-L direction with orbital character projection of the valence and conduction bands. (b) 3D Fermi surface of HfTe₂ calculated with a DFT code using the mBJ functional. (c) Constant energy map at E_F (Fermi surface), measured at a photon energy $h\nu = 100$ eV to probe the A-H-L plane. The threefold in-plane intensity distribution of the electron pockets located at the L points reflect the trigonal symmetry of the crystal structure. [(d), (f), and (h)] Valence band dispersion along Γ -M ($h\nu = 80$ eV) (d), an arbitrary k_z between Γ and A points ($h\nu = 87$ eV) (f) and A-L direction ($h\nu = 100$ eV) (h). [(e), (g), and (i)] Simulations based on DFT calculations, averaging over a substantial fraction of the Brillouin zone width in the k_z direction, as further described in the main text. (e), (g), and (i) correspond to an average k_z value of $k_z = 0.0\pi/c$, $0.4\pi/c$, and π/c , respectively.

level, since these states are not affected by the k_z broadening effect. Our photon energy-dependent ARPES confirms the 2D nature of the surface-confined states after K evaporation, but we additionally observe a remnant bulklike contribution. Interestingly, this weak k_z -dispersive spectral weight manifests with a slightly different photon-energy dependence to the spectra of pristine sample. Our measurements establish HfTe₂ as a semimetal with a narrow band overlap (negative band gap) of 0.2 eV, and show how the band structure also supports a 3D Dirac point approximately 3 eV below E_F .

II. METHODS

ARPES measurements were performed at the I05 beam line of Diamond Light Source [23]. The photon energy was varied between 80 and 120 eV, and the light was linearly polarized in the horizontal plane (LH, or p polarization). High quality HfTe₂ single crystals were obtained from HQ Graphene. Due to their air sensitivity, the samples were prepared in a dry argon glove box. Samples were cleaved *in situ* and measured at a temperature of $T = 10$ K. Potassium K was deposited on the cleaved surface at a low rate using a well-outgassed SAES K getter source operated at current of 6 A. The energy resolution was typically 10 meV.

DFT calculations were performed within the WIEN2K package [24], accounting for spin-orbit coupling. The modified Becke-Johnson (mBJ) functional [25] was used (see text for discussion). The used lattice parameters are $a = b = 3.911$ Å,

$c = 6.649$ Å, and $z_{\text{Te}} = 0.266$ [20], and the $R_{\text{MT}}K_{\text{max}}$ parameter was equal to 7.0.

III. RESULTS

HfS₂ and HfSe₂ are well-established as layered semiconducting materials [26,27]. In the case of HfTe₂, however, the more extensive Te 5*p* orbitals have a larger overlap with the Hf 5*d* orbitals, and results in a semimetallic ground state. Thus the electronic structure of 1T-HfTe₂ has more in common with isostructural and isovalent 1T-TiTe₂, a well-known semimetal [28–30]. Our DFT calculations with the orbital character projection [Fig. 1(a)] gives an overview of the electronic structure. We have a manifold of 6 bands deriving from Te 5*p* orbitals, which are mostly occupied but reach up to the Fermi level around the Brillouin zone center (Γ and A points), forming hole pockets. Conversely, the bands deriving from Hf 5*d* orbitals are mostly unoccupied, but dip below the Fermi level to form electron pockets around the L points. Thus HfTe₂ is a compensated semimetal, though the hole and electron pockets have very different characters.

Although HfTe₂ is a layered material, the out-of-plane dispersion is crucial to understand the full three-dimensional electronic structure. In the calculation in Fig. 1(a) at the A point, two holelike bands are present near E_F . These derive from Te 5*p*_{*x,y*} orbitals only, but the separation of the bands due to the spin-orbit coupling is so large (~ 0.65 eV) that the lower branch is shifted fully into the occupied states, leaving a

single hole pocket here. At the Γ point, three bands are present as the $5p_z$ orbital is also relevant, but again there is a strong spin-orbit interaction which mixes the orbital character and separates the bands; the result is a pair of hole bands crossing E_F and a lower hole band which remains fully occupied. Thus, as illustrated in the 3D Fermi surface in Fig. 1(b), only one hole band crosses E_F at the A point (green band), but two Fermi pockets exist around Γ (green and yellow bands).

Similar to the widely-known TiSe_2 , the electron pockets are centered at the L points in HfTe_2 . Whether or not the Fermi surface is closed (i.e., a 3D pocket, as in TiSe_2 and TiTe_2 [29,31]) or open along k_z (i.e., forming a warped 2D cylinder) is a subtle question, but important for the understanding of transport data [20,32]. In DFT calculations using the generalized gradient approximation (GGA) functional the pockets are open along k_z , but GGA calculations also give an unrealistically large overlap of the Te $5p$ and Hf $5d$ states. Using the mBJ functional, however, gives a much more accurate low-energy band structure, and yields a closed electron pocket around the L points; or in other words, the lowest Hf $5d$ state at the M point in Fig. 1(a) is slightly above E_F .

How this 3D electron pocket appears in ARPES measurements requires some detailed discussion, because the k_z dispersion of the initial state is clearly as significant as the k_x, k_y directions; however, k_z is not strictly conserved in the photoemission process [33]. In general, the existence of multiple possible final states, and their nonparabolic dispersions, makes the full treatment of photoemission a complex problem. A commonly used approximation is the so-called free-electron final state model, which assumes a simplistic dispersion for the final state that allows a mapping between the photoelectron kinetic energy and the k_z value of the initial state. Empirically, we find this approximation to be largely successful for HfTe_2 , at least for the data here obtained with photon energies on the order of 100 eV. However, our measurements at a given photon energy appear to probe a distribution in k_z , rather than a sharply-defined value. This ‘‘uncertainty’’ in k_z is generically expected due to the damping of the final state in the z direction [34,35], normal to the sample surface. Such k_z broadening is evident from the constant energy map in Fig. 1(c), measured at a photon energy $h\nu = 100$ eV to probe the A - H - L plane. Here, the electron pockets are ‘‘filled-in,’’ with intensity localized within the bounds of the electron pocket, but we do not observe sharp ellipsoidal contours that might be expected from slicing the 3D Fermi surface in the $k_z = \pi/c$ plane. The effect of k_z uncertainty is more pronounced for the electron pockets as they have a slanted 3D shape. Whereas the hole pocket is centered on an axis of rotation which forbids any such slanting, and thus appears relatively sharp at the A point.

The measured high-symmetry dispersions are also influenced by the uncertainty in k_z . Therefore, we do not simply compare the measurements with the calculated dispersions from DFT, which assume a particular k_z value. Rather, we simulate the effect of k_z broadening by averaging over a substantial fraction of the Brillouin zone. We first construct a spectral function for each calculated k_z by adding a finite scattering rate of 50 meV to the calculated in-plane band dispersions, and then perform a summation over k_z in which the weight of each k_z slice is modelled by a Lorentzian

distribution with FWHM of $0.2 \times (\frac{2\pi}{c})$. Since the 80 eV data in Fig. 1(d) corresponds to a Γ point, according to the free-electron final state approximation, the simulation in Fig. 1(e) is centered around $k_z = 0$. Matrix elements are not included in the simulation, and the variation of k_z with in-plane momentum is not accounted for. Moreover, the calculated band energies are typically ~ 100 meV offset compared to the experiments, and correspondingly both the hole and electron pockets are larger in the calculation than in the experiment. However, there is excellent correspondence in understanding where features are sharp in the data (e.g., the inner hole pocket) or rather broader, due to the k_z averaging effect [36]. Some weak spectral weight of the electron pockets appear at the M points, however, this should be understood strictly as a result of smearing of spectral weight along k_z , and not as quasiparticle bands existing at M . At the L points, in Fig. 1(h), the electron pockets are brighter and better defined, though somewhat smaller than in the simulation based on DFT projection in Fig. 1(i), due to the limitations of the accuracy of the functional.

The merit of this approach is seen best for data measured away from any high-symmetry k_z value, such as in Fig. 1(f). Here, the data show a substantial asymmetry, as well as a large degree of broadening. However, these complexities are well-captured by the simulation in Fig. 1(g), where the k_z distribution is centered at $0.4\pi/c$. The asymmetry in the spectrum arises because of the $\bar{3}$ symmetry; away from the high-symmetry $k_z = (0, \pm\pi/c)$ planes, band dispersions towards the \bar{M} and \bar{M}' directions are not equivalent. The simulation also shows that the spectral weight of the electron pocket is centered away from the \bar{M} point, which is due to the slanting of the electron pockets. The spectral weight is shifted inside the Brillouin zone near the \bar{M} point and outside of the first Brillouin zone at the \bar{M}' point. Therefore, in the general case we expect threefold and not sixfold symmetry in measured ‘‘Fermi maps,’’ which is already present to some degree in Fig. 1(c) but is pronounced in measurements at other photon energies [37]. Overall, then, the agreement with our simulation based on DFT calculations confirms that the observed features are projected bulk bands resulting from the k_z uncertainties during the photoemission process.

We now turn to the question of how a 2D electronic structure can emerge upon K dosing of the surface of HfTe_2 . At first glance, the ARPES data in Figs. 2(a)–2(c) might seem like a simple rigid shift of the band structure, where the electron pockets start to become substantially occupied and the hole pockets eventually shift fully into the occupied states, reaching an effective carrier density of $n_e = 0.32$ el/u.c in Fig. 2(c). However, there are a number of important effects beyond the rigid shift model. First, the bands in the heavily dosed spectra [Fig. 2(c)] appear sharper than in the pristine bulk case [Fig. 2(a)]. The increased sharpness is somewhat counterintuitive, since in many cases surface dosing (and doping more generally) goes hand-in-hand with increased disorder, thereby leading to broader, not sharper, linewidths [6]. We must consider, however, that for the pristine surface, the k_z -broadening effect is the dominant source of linewidth broadening for most of the bands. The increasing sharpness is therefore the first experimental signature that the states that

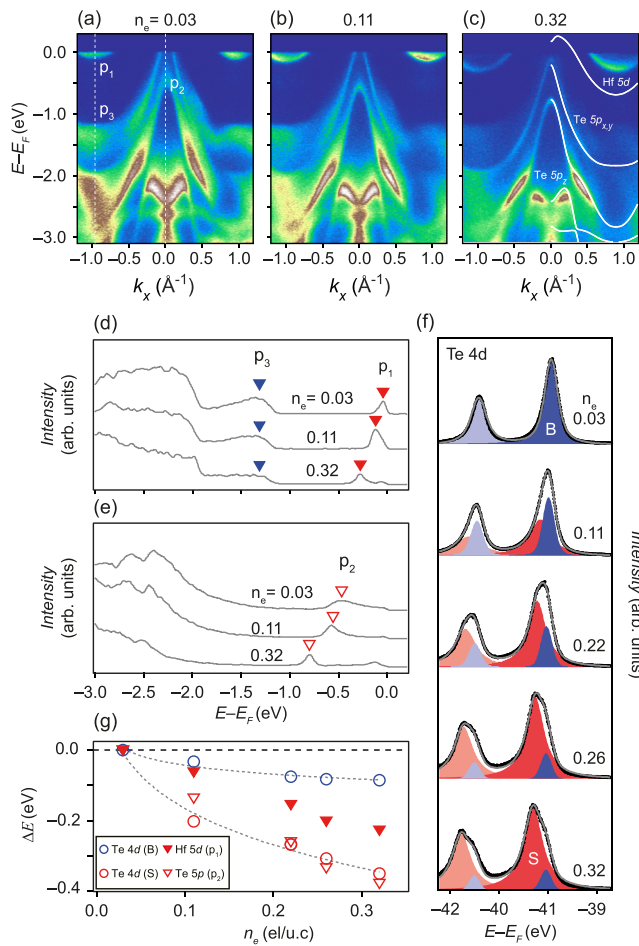


FIG. 2. Dosing sequence of HfTe₂ at $T = 10$ K, measured at a photon energy of $h\nu = 100$ eV. (a) Valence band dispersion along A - L direction of the pristine surface, (b) at a carrier density of $n_e = 0.11$ and (c) at $n_e = 0.32$ el/u.c., together with HfTe₂ monolayer DFT calculations (white solid lines), shifted downwards by 650 meV. Due to the overestimated band overlap in DFT, the energy of the electron pocket is lower in the calculation than the data, however, the agreement on the valence band structure is more important here. (d) Energy distribution curves (EDCs) showing the evolution as a function of the charge carrier density. The labeled features correspond to the electron pockets at the L point (p_1), and the remnant bulklike bands (p_3). (e) Equivalent EDCs at A , highlighting a peak from the inner valence band (p_2). (f) Core level spectroscopy of Te $4d$ as a function of charge carrier density. The spectra were fitted using two pairs of Voigt functions, depicted as blue (bulk) and red (surface) shaded areas. The SOC peak separation and areal ratio of Te $4d_{3/2}$ to Te $4d_{5/2}$, were fixed to the values obtained from the pristine surface ($n_e = 0.03$). (g) Comparison of the energy shift of shallow core levels of Te $4d$ (blue and red circles), the inner Te $5p$ -derived state of the valence band (p_2 , filled red triangles) and the Hf $5d$ -derived electron pockets (p_1 , empty red triangles). The data reveal a similar trend of the p_2 valence band state (Te $5p$) and Te $4d$ shallow core levels.

emerge after dosing have 2D character, with wave functions confined to the topmost layer of HfTe₂, thus suppressing the k_z broadening. Similar phenomenology has been observed in other TMDCs with more 3D characteristics in their bulk electronic structure [9]. The sharpness also confirms that the

K coverage must be homogeneous, at least on the scale of the beam spot size.

A recurrent question in the study of alkali-metal dosed surfaces of 2D materials is whether the dosed atoms remain on the surface and set up a vertical electric field, or intercalate into the sample [1–4,6–13,38–42]. A number of recent studies on TMDCs and similar materials have claimed that the alkali metal atoms remain on the surface [2–6,8,9,42], in the case that the sample remains at low temperatures throughout. In this scenario, the alkali metal ions create a charge accumulation at the surface, causing a band-bending potential that affects primarily the top-most layer of the TMDC. The new bands that emerge thus appear electron-doped compared with the bulk, and their wave functions are localized close to the surface [9,13]. Without detailed calculations, we cannot specifically predict what band dispersions would be expected in our case, however it would be reasonable to imagine that, broadly speaking, the conduction band will become increasingly filled, while the observed valence bands would develop more 2D character.

The alternative scenario is intercalation, in which the K atoms migrate into the van der Waals gap between layers, leading to an increased van der Waals gap that causes decoupling of the topmost layer both structurally and electronically. This scenario is known to occur almost immediately at room temperature [1] but is also often applied to dosing studies of TMDCs even when the sample is held at low temperatures [7,10,40]. This topmost layer also becomes doped due to the donated electrons from the K^+ ions.

The two scenarios lead to somewhat similar effects electronically, since in both cases electron-doped 2D surface-confined states emerge (i.e., wave functions localized in the topmost layer of HfTe₂). The vertical field scenario is a plausible scenario for our low-dosing data in Fig. 2(b). Indeed, the data in Fig. 2(b) largely resembles the bulk band structure, but with an overall energy shift, which could be accounted for by a band-bending potential at the surface. Whereas after further dosing the appearance of the data changes qualitatively (the first point beyond $n_e = 0.11$ el/u.c. in our dosing series), especially in the structure and intensity distribution of the bands around -2.5 eV. Moreover, we find very good agreement overall between the shape of the valence bands in Fig. 2(c) and the DFT calculations for an isolated monolayer [43]. This is evidence in favor of the intercalation scenario, as it implies that the topmost layer is structurally decoupled, suppresses out-of-plane hopping, which particularly affects the p_z orbital, leading to the emergence of monolayerlike dispersions of the valence bands. Thus at least for our highest-dosing samples, we are in agreement with Ref. [10] that the intercalation scenario is most likely.

For a more detailed analysis we extract energy distribution curves (EDCs) from the L and A points and track their evolution with K dosing. The feature p_1 in Fig. 2(d) shows a shift of ~ 0.22 eV to lower energy, reflecting the filling of the Hf $5d$ -derived conduction band at L . The inner Te $5p$ -derived hole pocket in Fig. 2(e), p_2 , shows qualitatively a similar shift but with a slightly larger magnitude of ~ 0.37 eV. The different behavior of these bands as a function of K deposition at the surface may be related to their different orbital character. Assuming that the shift of p_2 is representative for the hole

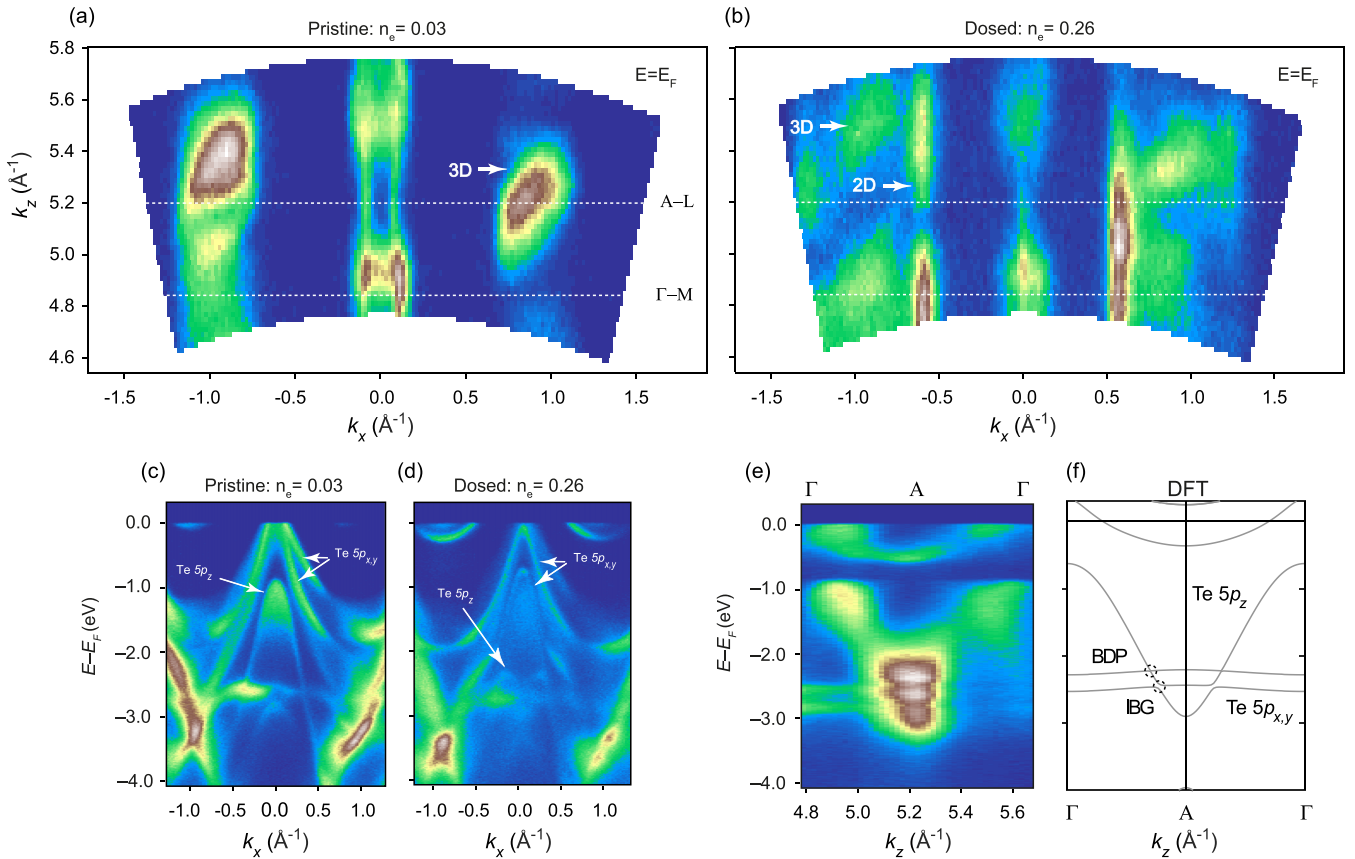


FIG. 3. Photon energy-dependent ARPES. [(a) and (b)] k_z maps, processed from photon energy dependent data at E_F before and after Potassium dosing on HfTe₂ surface along M - Γ - M (L - A - L) direction, providing clear evidence of the emergence of surface-confined states and the remnant bulklike contribution due to the non-negligible chance of the deep photoelectrons to escape. Photon energies into k_z conversion was done by employing the standard free-electron final state approximation: $k_z = \frac{1}{\hbar} \sqrt{2m_e(V_0 + E_k \cos^2 \theta)}$, where θ is the in-plane emission angle, E_k is the photo-electron kinetic energy and V_0 is the inner potential. We use an inner potential of 11 eV. [(c) and (d)] Valence band dispersion at a photon energy $h\nu = 87$ eV of the pristine and dosed surface, showing unambiguously the asymmetry disappearance and sharpness of the bands due to the monolayerlike electronic structure after dosing. The observed features inside the electron pockets and the center are a clear evidence of the remnant bulk states of deeper photoelectrons in the material. [(e) and (f)] Band dispersion along the out-of-plane k_z direction at the Brillouin zone center (Γ - A direction) of the pristine surface, highlighting the expected crossings of the Te p_z orbital and Te $p_{x,y}$ orbital-derived states, giving rise to a bulk Dirac point (BDP) (upper crossing) and an inverted bandgap (IBG) (lower crossing), as labeled in our DFT calculations.

bands overall, the different magnitude of the shift implies that the band overlap decreases somewhat with dosing. This indicates that a rigid shift model is not applicable in this material. The lineshape of p_2 in Fig. 2(e) also becomes noticeably sharper, as the surface confinement takes effect and the state loses any k_z dependence. However, other features such as p_3 simply lose intensity (though still weakly contributing even at high dosing) and show low or negligible energy shifts with increasing dosing in [Fig. 2(d)]. These correspond to remnant intensity from bulk states, which we will focus on later.

In addition to the shifts of the Te $5p$ -derived valence bands, the Te $4d$ shallow core levels also show a significant change with K dosing [Fig. 2(f)]. Consistent with a single environment for the Te atoms, these appear as a sharp doublet in the pristine case. As we dose the surface with K, however, fitting the data using two Voigt function pairs becomes necessary, reflecting the separate chemical shifts in the surface layer and the bulk. The intensity of the surface contribution (red) relative to the bulklike (blue) signal increases with increasing

dosing, concomitant with their energetic separation increasing also. Figure 2(g) shows that the energetic shift of the Te $4d$ state has approximately the same tendency with the shifts of the valence bands. Thus overall, as has been pointed out by [10], this electronic structure may be understood as being close to a doped monolayer of 1T-HfTe₂, with the Te $4d$ levels experiencing a similar shift of the chemical potential to the valence bands, but the Hf states showing a smaller shift.

Figures 3(a) and 3(b) shows photon-energy-dependent ARPES measurements before and after K deposition on HfTe₂, mapped into k_z using the free electron final state approximation. The k_z map of the pristine surface shows a pair of Te $5p_{x,y}$ with the contribution $5p_z$ -orbital derived state at the Γ point, and electron pockets centered at each L point [Fig. 3(a)]. The asymmetry of these pockets reflects, however, the trigonal symmetry of the crystal and the matrix element effects during the photoemission process. Nevertheless, all the states forming the band structure of the pristine surface have a 3D character, as discussed in details above.

Upon alkali metal deposition, we observe the emergence of states without k_z variation, which confirms that the electron pockets in the surface-dosed system are strictly 2D surface-confined states. In addition to these 2D states, there exists a noticeable contribution of 3D bulk states as shown in Fig. 3(b). These resemble the 3D electronic structure of the pristine surface, though with some subtle shifts. We interpret these weaker features as photoelectrons being excited deeper in the material and have a non-negligible chance to escape, analogous to the remnant bulklike contribution to the core level spectra in Fig. 2(e). Interestingly, the spectral weight of these remnant 3D states appears to be shifted along the k_z axis (using the same value of the inner potential for the k_z mapping). In other words, a modified inner potential may be applicable for these photoelectrons. Within the three-step model, the inner potential includes a term from the material work function [33,44,45], and this is known to be strongly dependent on K dosing [46]. We speculate therefore that even though the initial states of this bulklike contribution are essentially unaffected by the dosing, the photoelectrons experience a different surface potential, and thus come out with a different effective k_z .

In addition to the increased sharpness of the electronic structure, due to their 2D character after dosing, the asymmetry present in bulk spectra disappears in the surface-confined states [Figs. 3(c) and 3(d)]. This occurs because in the 2D limit, the band structure is expected to be sixfold symmetric. However, the weaker, asymmetric, and broader, spectral features come from a remnant contribution of the bulk states. In particular, our understanding of the spectral weight inside the electron pockets in Fig. 3(d) comes from such bulklike states, as evidenced from their 3D character in the k_z map after dosing [Fig. 3(b)]. Similar bulklike features are often observed even after a substantial dosing is applied [47].

One of the interesting features of the 3D electronic structure is that it supports the existence of the bulk Dirac fermions as well as an inverted bandgap. These topologically-protected features arise from within the manifold of Te p orbitals [48]. In this layered material, with a trigonal crystal field, p -orbital states form dispersive bands due to bonding, crystal-field splitting and spin-orbit coupling. In the out-of-plane k_z direction, a band with Te p_z orbital character behaves very differently to the in-plane p_{xy} -derived states. This gives a general expectation of a strongly k_z dispersion of the out-of-plane Te p_z orbital and a dispersionless pair of in-plane p_{xy} -derived states, thus naturally causing a set of k_z -dependent crossings [48–52].

Indeed, our valence band dispersion between Γ [$\mathbf{k} = (0,0,0)$] and A [$\mathbf{k} = (0, 0, \pi/c)$] high-symmetry points of the Brillouin zone shows the p -orbital-derived manifold of states along the out-of-plane k_z direction [Figs. 3(e) and 3(f)]. The crossing of the p_z orbital-derived state with the upper p_{xy} derived state forms a symmetry-protected 3D Dirac point, due to their belonging to different irreducible representations. However, p_z and the lower p_{xy} derived state share the same symmetry character and angular momentum but opposite parity, their hybridization thus opens an inverted bandgap which is expected to host topological surface states [48,50]. The location of these crossings at deeper binding energies $E - E_F \sim 3$ eV, and the small size of the inverted bandgap

makes the resolution of such features challenging due to the broadening of the bands.

One of the advantages of dosing this semimetallic system is that, by bringing the uppermost hole band below E_F , the band overlap can be directly measured. From Fig. 2(c), we estimate this to be ~ 0.2 eV. We caution that this is a value for the surface-dosed system, and thus the bulk value may vary slightly, but we estimate it to be in the range 0.2–0.3 eV. A small band overlap is an interesting playground for novel electronic states. For instance, one could imagine substituting Se onto the Te site in order to continuously tune the band gap/overlap through zero, and it would be interesting to see if any electronic instabilities occur, such as in the well-known isovalent compound TiSe_2 [31].

IV. CONCLUSIONS

To conclude, our findings show how the electronic structure of the HfTe_2 has undergone significant changes upon alkali metal deposition at the surface. The measured ARPES spectra revealed a 3D semimetallic ground state in the pristine sample. The broadening of the bands and asymmetries in the spectral weight were ascribed to the k_z uncertainties in the photoemission process and the crystal structure, respectively. This then evolves into 2D surface-confined states, with correspondingly sharper linewidths and more symmetric intensity. After substantial doping, a monolayerlike electronic structure was revealed, indicating intercalation of the alkali metal and decoupling of the topmost layer of HfTe_2 . However, we also found evidence of bulklike features, arising from photoelectrons from deeper in the material, even after substantial K dosing. Furthermore, we show that HfTe_2 hosts topological features such as a BDP and an IBG, a further example of the generic mechanism described for other TMDCs in the same space group [48]. Our methodical study of this prototypical layered semimetal gives evidence of the complexity that can occur upon alkali-metal dosing, showing qualitatively different behavior to recent studies in another semimetal, PtSe_2 [9]. Finally, we suggest that tuning the electronic structure of the narrow-band-overlap material HfTe_2 could lead to the discovery of novel electronic ground states.

ACKNOWLEDGMENTS

We thank Timur K. Kim and Benjamin Parrett for useful discussions. We thank Diamond Light Source for access to Beamline I05 (Proposal No. NT24921-1) that contributed to the results presented here. Z.E.Y. acknowledges Diamond Light Source and CY Cergy-Paris Université for PhD studentship support. S.M. acknowledges financial support from the European Unions Horizon 2020 research and innovation programme under the Marie Skłodowska-Curie Grant Agreement (GA) No. 665593 awarded to the Science and Technology Facilities Council. M.F. acknowledges support by the Swiss National Science Foundation, project No. P2ELP2_181877. J.S. and J.M. would like to thank CEDAMNF project financed by the Ministry of Education, Youth and Sports of Czech Republic, Project No. CZ.02.1.01/0.0/0.0/15.003/0000358.

- [1] K. Rossnagel, *New J. Phys.* **12**, 125018 (2010).
- [2] J. Kim, S. S. Baik, S. H. Ryu, Y. Sohn, S. Park, B.-G. Park, J. Denlinger, Y. Yi, H. J. Choi, and K. S. Kim, *Science* **349**, 723 (2015).
- [3] S. S. Baik, K. S. Kim, Y. Yi, and H. J. Choi, *Nano Lett.* **15**, 7788 (2015).
- [4] J. Kim, S. S. Baik, S. W. Jung, Y. Sohn, S. H. Ryu, H. J. Choi, B.-J. Yang, and K. S. Kim, *Phys. Rev. Lett.* **119**, 226801 (2017).
- [5] S. W. Jung, S. H. Ryu, W. J. Shin, Y. Sohn, M. Huh, R. J. Koch, C. Jozwiak, E. Rotenberg, A. Bostwick, and K. S. Kim, *Nat. Mater.* **19**, 277 (2020).
- [6] M. Kang, B. Kim, S. H. Ryu, S. W. Jung, J. Kim, L. Moreschini, C. Jozwiak, E. Rotenberg, A. Bostwick, and K. S. Kim, *Nano Lett.* **17**, 1610 (2017).
- [7] T. Eknapakul, P. King, M. Asakawa, P. Buaphet, R.-H. He, S.-K. Mo, H. Takagi, K. Shen, F. Baumberger, T. Sasagawa *et al.*, *Nano Lett.* **14**, 1312 (2014).
- [8] J. M. Riley, W. Meevasana, L. Bawden, M. Asakawa, T. Takayama, T. Eknapakul, T. Kim, M. Hoesch, S.-K. Mo, H. Takagi *et al.*, *Nat. Nanotechnol.* **10**, 1043 (2015).
- [9] O. J. Clark, F. Mazzola, J. Feng, V. Sunko, I. Marković, L. Bawden, T. K. Kim, P. D. C. King, and M. S. Bahramy, *Phys. Rev. B* **99**, 045438 (2019).
- [10] Y. Nakata, K. Sugawara, A. Chainani, K. Yamauchi, K. Nakayama, S. Souma, P.-Y. Chuang, C.-M. Cheng, T. Oguchi, K. Ueno, T. Takahashi, and T. Sato, *Phys. Rev. Materials* **3**, 071001 (2019).
- [11] S. Cho, B. S. Kim, B. Kim, W. Kyung, J. Seo, M. Park, J. W. Jeon, K. Tanaka, J. D. Denlinger, C. Kim *et al.*, *Phys. Chem. Chem. Phys.* **20**, 23007 (2018).
- [12] H. M. Benia, C. Lin, K. Kern, and C. R. Ast, *Phys. Rev. Lett.* **107**, 177602 (2011).
- [13] M. Bahramy, P. King, A. De La Torre, J. Chang, M. Shi, L. Patthey, G. Balakrishnan, P. Hofmann, R. Arita, N. Nagaosa *et al.*, *Nat. Commun.* **3**, 1159 (2012).
- [14] D. T. Hodul and A. M. Stacy, *J. Phys. Chem. Solids* **46**, 1447 (1985).
- [15] P. C. Klipstein, D. R. P. Guy, E. A. Marseglia, J. I. Meakin, R. H. Friend, and A. D. Yoffe, *J. Phys. C: Solid State Phys.* **19**, 4953 (1986).
- [16] Y. Aoki, T. Sambongi, H. Takahashi, N. Mori, F. Levy, and H. Berger, *Synthetic Metals* **71**, 1883 (1995).
- [17] Y. Aoki, T. Sambongi, F. Levy, and H. Berger, *J. Phys. Soc. Jpn.* **65**, 2590 (1996).
- [18] A. H. Reshak and S. Auluck, *Physica B: Condensed Matter* **363**, 25 (2005).
- [19] S. Aminalragia-Giamini, J. Marquez-Velasco, P. Tshipas, D. Tsoutsou, G. Renaud, and A. Dimoulas, *2D Materials* **4**, 015001 (2016).
- [20] S. Mangelsen, P. G. Naumov, O. I. Barkalov, S. A. Medvedev, W. Schnelle, M. Bobnar, S. Mankovsky, S. Polesya, C. Näther, H. Ebert, and W. Bensch, *Phys. Rev. B* **96**, 205148 (2017).
- [21] J. Smeggil and S. Bartram, *J. Solid State Chem.* **5**, 391 (1972).
- [22] D. Hodul and M. Sienko, *Physica B+C* **99**, 215 (1980).
- [23] M. Hoesch, T. Kim, P. Dudin, H. Wang, S. Scott, P. Harris, S. Patel, M. Matthews, D. Hawkins, S. Alcock *et al.*, *Rev. Sci. Instrum.* **88**, 013106 (2017).
- [24] P. Blaha, K. Schwarz, F. Tran, R. Laskowski, G. K. H. Madsen, and L. D. Marks, *J. Chem. Phys.* **152**, 074101 (2020).
- [25] D. Koller, F. Tran, and P. Blaha, *Phys. Rev. B* **85**, 155109 (2012).
- [26] T. Kanazawa, T. Amemiya, A. Ishikawa, V. Upadhyaya, K. Tsuruta, T. Tanaka, and Y. Miyamoto, *Sci. Rep.* **6**, 22277 (2016).
- [27] Q. Zhao, Y. Guo, K. Si, Z. Ren, J. Bai, and X. Xu, *Phys. Status Solidi (b)* **254**, 1700033 (2017).
- [28] R. Claessen, R. O. Anderson, G.-H. Gweon, J. W. Allen, W. P. Ellis, C. Janowitz, C. G. Olson, Z. X. Shen, V. Eyert, M. Skibowski, K. Friemelt, E. Bucher, and S. Hüfner, *Phys. Rev. B* **54**, 2453 (1996).
- [29] K. Rossnagel, L. Kipp, M. Skibowski, C. Solterbeck, T. Strasser, W. Schattke, D. Voß, P. Krüger, A. Mazur, and J. Pollmann, *Phys. Rev. B* **63**, 125104 (2001).
- [30] A. H. Reshak and S. Auluck, *Phys. Rev. B* **68**, 245113 (2003).
- [31] M. D. Watson, O. J. Clark, F. Mazzola, I. Marković, V. Sunko, T. K. Kim, K. Rossnagel, and P. D. C. King, *Phys. Rev. Lett.* **122**, 076404 (2019).
- [32] S. Mangelsen and W. Bensch, *Inorganic Chem.* **59**, 1117 (2020).
- [33] A. Damascelli, *Phys. Scripta* **T109**, 61 (2004).
- [34] V. Strocov, *J. Electron Spectrosc. Relat. Phenom.* **130**, 65 (2003).
- [35] V. N. Strocov, E. E. Krasovskii, W. Schattke, N. Barrett, H. Berger, D. Schrupp, and R. Claessen, *Phys. Rev. B* **74**, 195125 (2006).
- [36] T. Mitsuhashi, M. Minohara, R. Yukawa, M. Kitamura, K. Horiba, M. Kobayashi, and H. Kumigashira, *Phys. Rev. B* **94**, 125148 (2016).
- [37] X.-F. Tang, Y.-X. Duan, F.-Y. Wu, S.-Y. Liu, C. Zhang, Y.-Z. Zhao, J.-J. Song, Y. Luo, Q.-Y. Wu, J. He, H. Y. Liu, W. Xu, and J.-Q. Meng, *Phys. Rev. B* **99**, 125112 (2019).
- [38] T. Eknapakul, I. Fongkaew, S. Siriroj, R. Vidyasagar, J. D. Denlinger, L. Bawden, S.-K. Mo, P. D. C. King, H. Takagi, S. Limpijumngong, and W. Meevasana, *Phys. Rev. B* **94**, 201121(R) (2016).
- [39] N. Alidoust, G. Bian, S.-Y. Xu, R. Sankar, M. Neupane, C. Liu, I. Belopolski, D.-X. Qu, J. D. Denlinger, F.-C. Chou *et al.*, *Nat. Commun.* **5**, 4673 (2014).
- [40] T. Eknapakul, I. Fongkaew, S. Siriroj, W. Jindata, S. Chaiyachad, S.-K. Mo, S. Thakur, L. Petaccia, H. Takagi, S. Limpijumngong, and W. Meevasana, *Phys. Rev. B* **97**, 201104(R) (2018).
- [41] U. A. Schröder, M. Petrović, T. Gerber, A. J. Martínez-Galera, E. Grånäs, M. A. Arman, C. Herbig, J. Schnadt, M. Kralj, J. Knudsen, and T. Michely, *2D Mater.* **4**, 015013 (2016).
- [42] N. Ehlen, A. Sanna, B. V. Senkovskiy, L. Petaccia, A. V. Fedorov, G. Profeta, and A. Grüneis, *Phys. Rev. B* **97**, 045143 (2018).
- [43] For the monolayer calculation, we fix the c parameter of the mBJ functional using the bulk value, rather than calculating it during the self-consistent cycle.
- [44] A. Damascelli, Z. Hussain, and Z.-X. Shen, *Rev. Mod. Phys.* **75**, 473 (2003).
- [45] S. Hüfner, *Photoelectron Spectroscopy: Principles and Applications* (Springer Science Business Media, Berlin, 2013).

- [46] T. Jaouen, M. Rumo, B. Hildebrand, M.-L. Mottas, C. Nicholson, G. Kremer, B. Salzmann, F. Vanini, C. Barreateau, E. Giannini *et al.*, [arXiv:1911.06053](https://arxiv.org/abs/1911.06053).
- [47] C. Wen, H. Xu, C. Chen, Z. Huang, X. Lou, Y. Pu, Q. Song, B. Xie, M. Abdel-Hafiez, D. Chareev *et al.*, *Nat. Commun.* **7**, 1 (2016).
- [48] M. Bahramy, O. Clark, B.-J. Yang, J. Feng, L. Bawden, J. Riley, I. Marković, F. Mazzola, V. Sunko, D. Biswas *et al.*, *Nat. Mater.* **17**, 21 (2018).
- [49] O. J. Clark, M. J. Neat, K. Okawa, L. Bawden, I. Marković, F. Mazzola, J. Feng, V. Sunko, J. M. Riley, W. Meevasana, J. Fujii, I. Vobornik, T. K. Kim, M. Hoesch, T. Sasagawa, P. Wahl, M. S. Bahramy, and P. D. C. King, *Phys. Rev. Lett.* **120**, 156401 (2018).
- [50] O. Clark, F. Mazzola, I. Marković, J. Riley, J. Feng, B. Yang, K. Sumida, T. Okuda, J. Fujii, I. Vobornik *et al.*, *Electronic Structure* **1**, 014002 (2019).
- [51] B. Ghosh, D. Mondal, C.-N. Kuo, C. S. Lue, J. Nayak, J. Fujii, I. Vobornik, A. Politano, and A. Agarwal, *Phys. Rev. B* **100**, 195134 (2019).
- [52] S. Mukherjee, S. W. Jung, S. F. Weber, C. Xu, D. Qian, X. Xu, P. K. Biswas, T. K. Kim, L. C. Chapon, M. D. Watson *et al.*, [arXiv:1912.08535](https://arxiv.org/abs/1912.08535).