

Optical theorem for nonlinear media

Wei Li*

Department of Mathematics, University of Michigan, Ann Arbor, Michigan 48109, USA

John C. Schotland†

Department of Mathematics and Department of Physics, University of Michigan, Ann Arbor, Michigan 48109, USA

(Received 5 December 2014; published 16 October 2015)

We derive the optical theorem for scattering of electromagnetic waves in nonlinear media. This result is used to obtain the power extinguished from a field by a nonlinear scatterer. The cases of second-harmonic generation and the Kerr effect are studied in some detail. Applications to nonlinear apertureless scanning near-field optical microscopy are considered.

DOI: [10.1103/PhysRevA.92.043824](https://doi.org/10.1103/PhysRevA.92.043824)

PACS number(s): 42.65.–k

I. INTRODUCTION

The optical theorem is a basic result in scattering theory that is of both fundamental interest and considerable applied importance [1]. It can be formulated in a variety of settings, including quantum mechanics, acoustics, and electromagnetic theory. In its simplest form, the optical theorem relates the power extinguished from a plane-wave incident on a scattering medium to the scattering amplitude in the forward direction of scattering. For the case of electromagnetic scattering, the extinguished power P_e is given by

$$P_e = \frac{c}{2k_0} \text{Im} \mathbf{A} \cdot \mathbf{E}_0^*, \quad (1)$$

where k_0 is the wave number, \mathbf{E}_0 is the incident field, and \mathbf{A} is the scattering amplitude in the forward direction [2–4]. In physical terms, the loss of power from the incident field is due to interference between the incident field and the scattered field within the volume of the scatterer.

The standard derivation of the optical theorem makes use of the ansatz that the scattered field \mathbf{E}_s behaves asymptotically as an outgoing spherical wave of the form

$$\mathbf{E}_s \sim \mathbf{A} \frac{e^{ik_0 r}}{r}, \quad k_0 r \rightarrow \infty. \quad (2)$$

The above ansatz may be justified for the case of material media in which the polarization is related to the electric field by a *linear* constitutive relation. Moreover, in this situation, the optical theorem may be derived without invoking the asymptotic behavior of the scattered field [5,6].

The optical theorem is normally considered within the framework of linear optics [4]. However, the ansatz (2) is very general. That is, all properties of the scatterer are encoded in its scattering amplitude, which can, in principle, be arbitrarily prescribed. Thus, there is no reason to restrict the optical theorem to the linear response regime. Making use of this observation, in this paper we consider the optical theorem in the context of nonlinear media. We derive an expression for the extinguished power that holds when the polarization is an arbitrary function of the electric field. To some extent,

this result may be expected on physical grounds. However, we provide a proper mathematical justification following the approach of Refs. [5,6]. We specialize our result to the cases of quadratic and cubic nonlinearities. We also study in detail the processes of second-harmonic generation and the Kerr effect for small scatterers. Our results on scattering from small nonlinear particles are of independent interest, since exact solutions to nonlinear scattering problems are, to the best of our knowledge, known only in one dimension [7,8].

The remainder of this paper is organized as follows. In Sec. II, we present some basic results in nonlinear optics and scattering theory that will be used later in the paper. Section III presents the derivation of the optical theorem in the form we require, without the use of asymptotics. In Sec. IV, we consider separately the cases of second- and third-order nonlinearities. Numerical results for small scatterers are presented in Sec. V. Finally, in Sec. VI we consider applications to apertureless scanning near-field optical microscopy in which the tip exhibits a nonlinear optical response. We investigate the cases of second- and third-harmonic generation and characterize the achievable resolution for a model system consisting of two scatterers. A discussion of our results is presented in Sec. VII.

II. PRELIMINARIES

In this section we collect several results in nonlinear optics and scattering theory that will be useful in the derivation of the generalized optical theorem. We begin by recalling that the Maxwell equations in a source-free nonmagnetic medium are of the form

$$\nabla \cdot \mathbf{D} = 0, \quad (3)$$

$$\nabla \times \mathbf{E} + \frac{1}{c} \frac{\partial \mathbf{B}}{\partial t} = 0, \quad (4)$$

$$\nabla \cdot \mathbf{B} = 0, \quad (5)$$

$$\nabla \times \mathbf{B} - \frac{1}{c} \frac{\partial \mathbf{D}}{\partial t} = 0. \quad (6)$$

Here, \mathbf{E} is the electric field, \mathbf{B} is the magnetic field, \mathbf{D} is the electric displacement field, and \mathbf{P} is the polarization. In addition, \mathbf{D} and \mathbf{P} satisfy the relation

$$\mathbf{D} = \mathbf{E} + 4\pi \mathbf{P}. \quad (7)$$

*leewei@umich.edu

†schotland@umich.edu

Throughout this paper, we will use the following Fourier transformation convention,

$$f(\mathbf{r}, \omega) = \int f(\mathbf{r}, t) e^{i\omega t} dt, \quad (8)$$

$$f(\mathbf{r}, t) = \frac{1}{2\pi} \int f(\mathbf{r}, \omega) e^{-i\omega t} d\omega, \quad (9)$$

where the time and frequency dependence of all quantities are displayed explicitly. We note that if $f(\mathbf{r}, t)$ is real valued, then $f(\mathbf{r}, -\omega) = f^*(\mathbf{r}, \omega)$. Upon Fourier transforming (3)–(6) we obtain

$$\nabla \cdot \mathbf{D}(\mathbf{r}, \omega) = 0, \quad (10)$$

$$\nabla \times \mathbf{E}(\mathbf{r}, \omega) = -ik(\omega)\mathbf{B}(\mathbf{r}, \omega), \quad (11)$$

$$\nabla \cdot \mathbf{B}(\mathbf{r}, \omega) = 0, \quad (12)$$

$$\nabla \times \mathbf{B}(\mathbf{r}, \omega) = -ik(\omega)\mathbf{D}(\mathbf{r}, \omega), \quad (13)$$

where $k(\omega) = \omega/c$.

If the medium is linear, the polarization is given by

$$P_i(\mathbf{r}, \omega) = \chi_{ij}^{(1)}(\mathbf{r}; \omega) E_j(\mathbf{r}, \omega), \quad (14)$$

where $\chi_{ij}^{(1)}$ is the first-order susceptibility. Here, we have adopted the summation convention, whereby repeated indices are summed. For the case of quadratic nonlinear media,

$$P_i(\mathbf{r}, \omega) = \chi_{ij}^{(1)}(\mathbf{r}; \omega) E_j(\mathbf{r}, \omega) + \sum_{\omega_1 + \omega_2 = \omega} \chi_{ijk}^{(2)}(\mathbf{r}; \omega_1, \omega_2) \times E_j(\mathbf{r}, \omega_1) E_k(\mathbf{r}, \omega_2), \quad (15)$$

where $\chi_{ijk}^{(2)}$ is the second-order susceptibility. The sum implies that the electric field at the frequencies ω_1 and ω_2 contributes to the polarization at the frequency ω if $\omega_1 + \omega_2 = \omega$. For cubic-nonlinear media,

$$P_i(\mathbf{r}, \omega) = \chi_{ij}^{(1)}(\mathbf{r}; \omega) E_j(\mathbf{r}, \omega) + \sum_{\omega_1 + \omega_2 + \omega_3 = \omega} \chi_{ijkl}^{(3)}(\mathbf{r}; \omega_1, \omega_2, \omega_3) \times E_j(\mathbf{r}, \omega_1) E_k(\mathbf{r}, \omega_2) E_l(\mathbf{r}, \omega_3), \quad (16)$$

where $\chi_{ijkl}^{(3)}$ are the third-order susceptibilities.

We will assume that the susceptibilities have over all permutation symmetry. This assumption is quite standard and holds for nonresonance frequencies in the classical anharmonic oscillator model and in quantum optics [7,8]. However, we note that Kleinman symmetry can be broken in a variety of systems [9–14].

The wave equation for the electric field $\mathbf{E}(\mathbf{r}, \omega)$ is obtained by taking the curl of (4) and eliminating the magnetic field $\mathbf{B}(\mathbf{r}, \omega)$ using (6). We then have

$$\nabla \times \nabla \times \mathbf{E}(\mathbf{r}, \omega) - k^2(\omega)\mathbf{E}(\mathbf{r}, \omega) = 4\pi k^2(\omega)\mathbf{P}(\mathbf{r}, \omega). \quad (17)$$

The solution of the wave equation (17) is given by

$$E_i(\mathbf{r}, \omega) = E_{\text{inc},i}(\mathbf{r}, \omega) + k^2(\omega) \int d^3r' G_{ij}(\mathbf{r}, \mathbf{r}'; \omega) P_j(\mathbf{r}', \omega), \quad (18)$$

where $\mathbf{E}_{\text{inc}}(\mathbf{r}, \omega)$ obeys (17) with $P = 0$. The Green's function G_{ij} is of the form [15]

$$G_{ij}(\mathbf{r}, \mathbf{r}'; \omega) = \left(\delta_{ij} + \frac{1}{k^2(\omega)} \partial_i \partial_j \right) G(\mathbf{r}, \mathbf{r}'; \omega), \quad (19)$$

where

$$G(\mathbf{r}, \mathbf{r}'; \omega) = \frac{e^{ik(\omega)|\mathbf{r}-\mathbf{r}'|}}{|\mathbf{r}-\mathbf{r}'|}. \quad (20)$$

Following standard procedures, the conservation of energy follows immediately from (17) and takes the form

$$\nabla \cdot \mathbf{S}(\mathbf{r}, \omega) = \frac{ck(\omega)}{2\pi^2} \text{Im}[\mathbf{E}^*(\mathbf{r}, \omega) \cdot \mathbf{P}(\mathbf{r}, \omega)], \quad (21)$$

where the Poynting vector \mathbf{S} is defined by

$$\mathbf{S}(\mathbf{r}, \omega) = \frac{c}{8\pi^3} \text{Re}[\mathbf{E}(\mathbf{r}, \omega) \times \mathbf{B}^*(\mathbf{r}, \omega)]. \quad (22)$$

We recall that the time-dependent Poynting vector is defined as

$$\mathbf{S}(\mathbf{r}, t) = \frac{c}{4\pi} \mathbf{E}(\mathbf{r}, t) \times \mathbf{B}(\mathbf{r}, t). \quad (23)$$

For time-harmonic fields, the time average of the Poynting vector

$$\bar{\mathbf{S}} = \lim_{T \rightarrow \infty} \frac{1}{T} \int_0^T \mathbf{S}(\mathbf{r}, t) dt \quad (24)$$

is well defined. It follows that

$$\bar{\mathbf{S}} = \int_0^\infty \mathbf{S}(\mathbf{r}, \omega) d\omega. \quad (25)$$

We note that for nondispersive media, the analog of the Manley-Rowe relations can be shown to hold. That is, if the susceptibilities $\chi_{ij}^{(1)}$, $\chi_{ijk}^{(2)}$, and $\chi_{ijkl}^{(3)}$ are purely real, then $\nabla \cdot \bar{\mathbf{S}} = 0$. The proof is given in Appendix A.

III. OPTICAL THEOREM

In this section we derive the optical theorem for nonlinear media following the approach of Refs. [5,6]. We begin by recalling some basic facts from scattering theory [4]. We consider a general nonlinear medium, whose polarization is defined by either a quadratic or cubic nonlinearity. We suppose that a field \mathbf{E}_{inc} is incident upon the medium and write the total electric field as the sum

$$\mathbf{E} = \mathbf{E}_{\text{inc}} + \mathbf{E}_s, \quad (26)$$

where \mathbf{E}_s is the scattered field. It follows from (17) that \mathbf{E}_s obeys

$$\nabla \times \nabla \times \mathbf{E}_s(\mathbf{r}, \omega) - k^2(\omega)\mathbf{E}_s(\mathbf{r}, \omega) = 4\pi k^2(\omega)\mathbf{P}(\mathbf{r}, \omega) \quad (27)$$

and that

$$E_{s,i}(\mathbf{r}, \omega) = k^2(\omega) \int d^3r' G_{ij}(\mathbf{r}, \mathbf{r}'; \omega) P_j(\mathbf{r}', \omega). \quad (28)$$

Straightforward calculation shows that the Green's function has the following asymptotic form,

$$G_{ij}(\mathbf{r}, \mathbf{r}'; \omega) \sim \frac{e^{ik(\omega)r}}{r} (\delta_{ij} - \hat{r}_i \hat{r}_j) e^{-ik(\omega)\hat{\mathbf{r}} \cdot \mathbf{r}'}, \quad (29)$$

when $r \gg r'$. Using this result, we find that the scattered field behaves as an outgoing spherical wave of the form

$$E_{s,i}(\mathbf{r}, \omega) \sim \frac{e^{ik(\omega)r}}{r} A_i(\hat{\mathbf{r}}, \omega), \quad (30)$$

where the scattering amplitude is defined by

$$A_i(\hat{\mathbf{r}}, \omega) = k^2(\omega)(\delta_{ij} - \hat{r}_i \hat{r}_j) \int d^3 r' P_j(\mathbf{r}', \omega) e^{ik(\omega)\hat{\mathbf{r}} \cdot \mathbf{r}'}. \quad (31)$$

The energy carried by the scattered field is associated with the Poynting vector \mathbf{S}_s , which is defined by

$$\mathbf{S}_s = \frac{c}{8\pi^3} \text{Re}[\mathbf{E}_s(\omega) \times \mathbf{B}_s^*(\omega)]. \quad (32)$$

Evidently, \mathbf{S}_s obeys the conservation law

$$\nabla \cdot \mathbf{S}_s(\mathbf{r}, \omega) = \frac{ck(\omega)}{2\pi^2} \text{Im}[\mathbf{E}_s^*(\mathbf{r}, \omega) \cdot \mathbf{P}(\mathbf{r}, \omega)], \quad (33)$$

which is a consequence of (27).

Suppose that the scattering medium is contained in a volume V . Then the power absorbed by the medium is given by

$$P_a(\omega) = - \int_{\partial V} \mathbf{S}(\mathbf{r}, \omega) \cdot \hat{\mathbf{n}} d^2 r, \quad (34)$$

where $\hat{\mathbf{n}}$ is the outward unit normal to ∂V and the presence of the overall minus sign signifies that this is the flux of the Poynting vector of the wave traveling into the medium. Converting the above surface integral to a volume integral by means of the divergence theorem and making use of (21), we have

$$P_a(\omega) = \frac{ck(\omega)}{2\pi^2} \int_V \text{Im}[\mathbf{E}^*(\mathbf{r}', \omega) \cdot \mathbf{P}(\mathbf{r}', \omega)] d^3 r'. \quad (35)$$

In a strictly similar manner, we define the scattered power as

$$P_s(\omega) = \int_{\partial V} \mathbf{S}_s(\mathbf{r}', \omega) \cdot \hat{\mathbf{n}} d^2 r'. \quad (36)$$

We then obtain from (33) that

$$P_s(\omega) = - \frac{ck(\omega)}{2\pi^2} \int_V \text{Im}[\mathbf{E}_s^*(\mathbf{r}', \omega) \cdot \mathbf{P}(\mathbf{r}', \omega)] d^3 r'. \quad (37)$$

We define the extinguished power P_e to be the total power lost from the incident field due to absorption and scattering:

$$P_e(\omega) = P_a(\omega) + P_s(\omega). \quad (38)$$

It follows from (35) and (37) that the extinguished power is given by

$$P_e(\omega) = \frac{ck(\omega)}{2\pi^2} \int_V \text{Im}[\mathbf{E}_{\text{inc}}^*(\mathbf{r}', \omega) \cdot \mathbf{P}(\mathbf{r}', \omega)] d^3 r'. \quad (39)$$

We note that if either Eqs. (15) or (16) for the polarization is inserted into the above expression, we see that the power extinguished from the incident field is due to interference between the incident field and the total field within the volume of the scatterer.

We can now rewrite (39) in terms of the scattering amplitude, provided that the incident field is a plane wave of the form

$$\mathbf{E}_{\text{inc}}(\mathbf{r}, \omega) = \mathbf{E}_0(\omega) e^{ik(\omega)\hat{\mathbf{s}} \cdot \mathbf{r}}, \quad (40)$$

where $\hat{\mathbf{s}}$ is the direction of propagation. Upon comparing (39) and (31), we obtain the optical theorem

$$P_e(\omega) = \frac{c}{2\pi^2 k(\omega)} \text{Im} \mathbf{A}(\hat{\mathbf{s}}, \omega) \cdot \mathbf{E}_0^*(\omega). \quad (41)$$

Using this result, we see that the time-averaged extinguished power is given by

$$\begin{aligned} \bar{P}_e &= \int_0^\infty P_e(\omega) d\omega \\ &= \frac{c}{2\pi^2} \int_0^\infty \frac{1}{k(\omega)} \text{Im} \mathbf{A}(\hat{\mathbf{s}}, \omega) \cdot \mathbf{E}_0^*(\omega) d\omega. \end{aligned} \quad (42)$$

We note that the optical theorem (41) applies to both linear and nonlinear media. In Sec. IV, we specialize this result to the cases of quadratic and cubic nonlinearities. Here, we remark that in the case of a linear medium with an incident monochromatic field of the form

$$\mathbf{E}_{\text{inc}}(\mathbf{r}, \omega) = e^{ik(\omega)\hat{\mathbf{s}} \cdot \mathbf{r}} [\mathbf{E}_0 \delta(\omega - \Omega) + \mathbf{E}_0^* \delta(\omega + \Omega)], \quad (43)$$

(42) becomes

$$\bar{P}_e = \frac{c}{2\pi^2 k(\Omega)} \text{Im} \mathbf{A}(\hat{\mathbf{s}}, \Omega) \cdot \mathbf{E}_0^*. \quad (44)$$

We have thus recovered the familiar form of the optical theorem (1). Finally, we note that (41) is an *exact* result. That is, it has not been derived by making use of the asymptotic behavior of the electric field.

IV. SECOND- AND THIRD-ORDER NONLINEARITIES

Evidently, in order to apply the optical theorem (42) it is necessary to first obtain the scattering amplitude. In this section we calculate the scattering amplitude for second- and third-order nonlinearities. We begin with the case of second-order nonlinearity and, for simplicity, discuss only the problem of second-harmonic generation (SHG). In this setting, we analyze the scattering of an incident monochromatic wave from a spherical particle whose size is small compared to the wavelength. Next, we turn our attention to the case of third-order nonlinearity, where we restrict our attention to the Kerr effect. Once again, we calculate the extinguished power for a small particle and study the associated resonant scattering.

We note that the method we develop for calculating the scattering of light from a small nonlinear inhomogeneity may be of independent interest. In particular, it is readily extended to collections of small inhomogeneities, which is a physical setting that arises in applications to biomedical imaging and nonlinear microscopy [16–22]. We plan to report the results of such calculations elsewhere.

A. Second-order nonlinearity

We consider SHG excited by a monochromatic incident field of frequency Ω . We assume that the second-order susceptibility is sufficiently weak so that the condition

$$\sum_{\omega_1 + \omega_2 = \omega} \chi_{ijk}^{(2)}(\mathbf{r}; \omega_1, \omega_2) E_j(\mathbf{r}, \omega_1) E_k(\mathbf{r}, \omega_2) \ll \chi_{ij}^{(1)}(\mathbf{r}; \omega) E_j(\omega) \quad (45)$$

is obeyed. We then find that the wave equation (17), together with (15) and the permutation symmetry of $\chi_{ijk}^{(2)}$, gives rise to the pair of coupled-wave equations

$$\begin{aligned} \nabla \times \nabla \times \mathbf{E}(\mathbf{r}, \Omega) - k^2(\Omega)\mathbf{E}(\mathbf{r}, \Omega) \\ = 4\pi k^2(\Omega) [\chi_{ij}^{(1)}(\mathbf{r}, \Omega)E_j(\mathbf{r}, \Omega) \\ + 2\chi_{ijk}^{(2)}(\mathbf{r}, 2\Omega, -\Omega)E_j(\mathbf{r}, 2\Omega)E_k^*(\mathbf{r}, \Omega)], \end{aligned} \quad (46)$$

$$\begin{aligned} \nabla \times \nabla \times \mathbf{E}(\mathbf{r}, 2\Omega) - k^2(2\Omega)\mathbf{E}(\mathbf{r}, 2\Omega) \\ = 4\pi k^2(2\Omega) [\chi_{ij}^{(1)}(\mathbf{r}, 2\Omega)E_j(\mathbf{r}, 2\Omega) \\ + \chi_{ijk}^{(2)}(\mathbf{r}, \Omega, \Omega)E_j(\mathbf{r}, \Omega)E_k(\mathbf{r}, \Omega)], \end{aligned} \quad (47)$$

for the electric fields at the frequencies Ω and 2Ω . Note that we have not accounted for the formation of higher harmonics, consistent with the condition (45).

It follows immediately from (28) that the solutions to (46) and (47) are given by

$$\begin{aligned} E_i(\mathbf{r}, \Omega) = E_{\text{inc},i}(\mathbf{r}, \Omega) + k^2(\Omega) \int d^3r' \chi_{jk}^{(1)}(\mathbf{r}', \Omega) G_{ij}(\mathbf{r}, \mathbf{r}'; \Omega) \\ \times E_k(\mathbf{r}', \Omega) + 2k^2(\Omega) \int d^3r' \chi_{jkl}^{(2)}(\mathbf{r}', 2\Omega, -\Omega) \\ \times G_{ij}(\mathbf{r}, \mathbf{r}'; \Omega) E_k(\mathbf{r}', 2\Omega) E_l^*(\mathbf{r}', \Omega), \end{aligned} \quad (48)$$

$$\begin{aligned} E_i(\mathbf{r}, 2\Omega) = k^2(2\Omega) \int d^3r' \chi_{jk}^{(1)}(\mathbf{r}', 2\Omega) G_{ij}(\mathbf{r}, \mathbf{r}'; 2\Omega) \\ \times E_k(\mathbf{r}', 2\Omega) + k^2(2\Omega) \int d^3r' \chi_{jkl}^{(2)}(\mathbf{r}', \Omega, \Omega) \\ \times G_{ij}(\mathbf{r}, \mathbf{r}'; 2\Omega) E_k(\mathbf{r}', \Omega) E_l(\mathbf{r}', \Omega). \end{aligned} \quad (49)$$

Suppose that the scattering medium is a small ball of radius a with $k(\Omega)a \ll 1$ and $k(2\Omega)a \ll 1$. The susceptibilities are taken to be $\chi_{ij}^{(1)}(\mathbf{r}; \omega) = \eta_{ij}^{(1)}$ and $\chi_{ijk}^{(2)}(\mathbf{r}; \omega) = \eta_{ijk}^{(2)}$ for $|\mathbf{r}| \leq a$ and to vanish for $|\mathbf{r}| > a$. Equations (48) and (49) thus become

$$\begin{aligned} E_i(\mathbf{r}, \Omega) = E_{\text{inc},i}(\mathbf{r}, \Omega) + k^2(\Omega) \eta_{jk}^{(1)} \int_{|\mathbf{r}'| \leq a} d^3r' G_{ij}(\mathbf{r}, \mathbf{r}'; \Omega) \\ \times E_k(\mathbf{r}', \Omega) + 2k^2(\Omega) \eta_{jkl}^{(2)} \int_{|\mathbf{r}'| \leq a} d^3r' G_{ij}(\mathbf{r}, \mathbf{r}'; \Omega) \\ \times E_k(\mathbf{r}', 2\Omega) E_l^*(\mathbf{r}', \Omega), \end{aligned} \quad (50)$$

$$\begin{aligned} E_i(\mathbf{r}, 2\Omega) = k^2(2\Omega) \eta_{jk}^{(1)} \int_{|\mathbf{r}'| \leq a} d^3r' G_{ij}(\mathbf{r}, \mathbf{r}'; 2\Omega) E_k(\mathbf{r}', 2\Omega) \\ + k^2(2\Omega) \eta_{jkl}^{(2)} \int_{|\mathbf{r}'| \leq a} d^3r' G_{ij}(\mathbf{r}, \mathbf{r}'; 2\Omega) \\ \times E_k(\mathbf{r}', \Omega) E_l(\mathbf{r}', \Omega). \end{aligned} \quad (51)$$

Using the asymptotic form of the Green's function given in Eq. (29), we find that the scattered fields are of the form

$$E_i^s(\mathbf{r}, \Omega) = A_i(\mathbf{r}, \Omega) \frac{e^{ik(\Omega)r}}{r}, \quad (52)$$

$$E_i(\mathbf{r}, 2\Omega) = A_i(\mathbf{r}, 2\Omega) \frac{e^{ik(2\Omega)r}}{r}, \quad (53)$$

where the scattering amplitudes are defined by

$$\begin{aligned} A_i(\mathbf{r}, \Omega) = \frac{4\pi}{3} a^3 (\delta_{ij} - \hat{r}_i \hat{r}_j) k^2(\Omega) [\eta_{jk}^{(1)} E_k(\mathbf{0}, \Omega) \\ + 2\eta_{jkl}^{(2)} E_k(\mathbf{0}, 2\Omega) E_l^*(\mathbf{0}, \Omega)], \end{aligned} \quad (54)$$

$$\begin{aligned} A_i(\mathbf{r}, 2\Omega) = \frac{4\pi}{3} a^3 (\delta_{ij} - \hat{r}_i \hat{r}_j) k^2(2\Omega) [\eta_{jk}^{(1)} E_j(\mathbf{0}, 2\Omega) \\ + \eta_{jkl}^{(2)} E_k(\mathbf{0}, \Omega) E_l(\mathbf{0}, \Omega)]. \end{aligned} \quad (55)$$

Here, we have used the fact that the radius of the scatterer is small, which leads to the identity

$$\int_{|\mathbf{r}'| \leq a} d^3r' e^{-ik(\omega)\mathbf{r}\cdot\mathbf{r}'} g(k(\omega)\mathbf{r}') = \frac{4\pi}{3} a^3 g(\mathbf{0}) (1 + O(k(\omega)a)), \quad (56)$$

for some function g . The local fields $E_i(\mathbf{0}, \Omega)$ and $E_i(\mathbf{0}, 2\Omega)$ can be calculated perturbatively, as shown in Appendix B 1.

B. Third-order nonlinearity

The treatment of the Kerr effect parallels that of SHG. We consider the Kerr effect excited by a monochromatic incident field of frequency Ω . We assume that the third-order susceptibility is sufficiently weak so that the condition

$$\begin{aligned} \sum_{\omega_1 + \omega_2 + \omega_3 = \omega} \chi_{ijkl}^{(3)}(\mathbf{r}; \omega_1, \omega_2) E_j(\mathbf{r}, \omega_1) E_k(\mathbf{r}, \omega_2) E_l(\mathbf{r}, \omega_3) \\ \ll \chi_{ij}^{(1)}(\mathbf{r}; \omega) E_j(\omega) \end{aligned} \quad (57)$$

is obeyed. We then find that (17), together with (16) and the permutation symmetry of $\chi_{ijkl}^{(3)}$, gives rise to the wave equation

$$\begin{aligned} \nabla \times \nabla \times \mathbf{E}(\mathbf{r}, \Omega) - k^2(\Omega)\mathbf{E}(\mathbf{r}, \Omega) \\ = 4\pi k^2(\Omega) [\chi_{ij}^{(1)}(\mathbf{r}, \Omega) E_j(\mathbf{r}, \Omega) + 3\chi_{ijkl}^{(3)}(\mathbf{r}, \Omega, \Omega, -\Omega) \\ \times E_j(\mathbf{r}, \Omega) E_k(\mathbf{r}, \Omega) E_l^*(\mathbf{r}, \Omega)]. \end{aligned} \quad (58)$$

Note that we have not accounted for the formation of higher harmonics, consistent with the condition (57). It follows immediately from (28) that the solution to (58) is given by

$$\begin{aligned} E_i(\mathbf{r}, \Omega) = E_{\text{inc},i}(\mathbf{r}, \Omega) + k^2(\Omega) \int d^3r' \chi_{jk}^{(1)}(\mathbf{r}', \Omega) G_{ij}(\mathbf{r}, \mathbf{r}'; \Omega) \\ \times E_k(\mathbf{r}', \Omega) + 3k^2(\Omega) \int d^3r' \chi_{jklm}^{(3)}(\mathbf{r}', \Omega, \Omega, -\Omega) \\ \times G_{ij}(\mathbf{r}, \mathbf{r}'; \Omega) E_k(\mathbf{r}', \Omega) E_l(\mathbf{r}', \Omega) E_m^*(\mathbf{r}', \Omega). \end{aligned} \quad (59)$$

Suppose that the scattering medium is a small ball of radius a with $k(\Omega)a \ll 1$. The susceptibilities are taken to be $\chi_{ij}^{(1)}(\mathbf{r}; \omega) = \eta_{ij}^{(1)}$ and $\chi_{ijkl}^{(3)}(\mathbf{r}; \omega) = \eta_{ijkl}^{(3)}$ for $|\mathbf{r}| \leq a$ and to vanish for $|\mathbf{r}| > a$. Equation (59) thus becomes

$$\begin{aligned} E_i(\mathbf{r}, \Omega) = E_{\text{inc},i}(\mathbf{r}, \Omega) + k^2(\Omega) \eta_{jk}^{(1)} \int_{|\mathbf{r}'| \leq a} d^3r' G_{ij}(\mathbf{r}, \mathbf{r}'; \Omega) \\ \times E_k(\mathbf{r}', \Omega) + 3k^2(\Omega) \eta_{jklm}^{(3)} \int_{|\mathbf{r}'| \leq a} d^3r' G_{ij}(\mathbf{r}, \mathbf{r}'; \Omega) \\ \times E_k(\mathbf{r}', \Omega) E_l(\mathbf{r}', \Omega) E_m^*(\mathbf{r}', \Omega). \end{aligned} \quad (60)$$

Using the asymptotic form of the Green's function given in Eq. (29), we find that the scattered field is of the form

$$E_i^s(\mathbf{r}, \Omega) = A_i(\mathbf{r}, \Omega) \frac{e^{ik(\Omega)r}}{r}. \quad (61)$$

where the scattering amplitude is defined by

$$A_i(\mathbf{r}, \Omega) = \frac{4\pi}{3} a^3 (\delta_{ij} - \hat{r}_i \hat{r}_j) k^2(\Omega) [\eta_{jk}^{(1)} E_k(\mathbf{0}, \Omega) + 3\eta_{jklm}^{(3)} E_k(\mathbf{0}, \Omega) E_l(\mathbf{0}, \Omega) E_m^*(\mathbf{0}, \Omega)]. \quad (62)$$

Once again, we calculate the local fields $E_i(\mathbf{0}, \Omega)$ perturbatively, as shown in Appendix B 2.

V. NUMERICAL RESULTS

In this section we apply the optical theorem (42) to linear, second-, and third-order nonlinear media. We present numerical results for several cases of interest, including second-harmonic generation and the Kerr effect. We will see that the effect of the nonlinearities is to modify the linear scattering resonance of small scatterers.

A. Linear response

We consider an isotropic medium with $\eta_{ij}^{(1)} = \eta^{(1)} \delta_{ij}$ and assume that all the higher-order susceptibilities vanish. The incident field is taken to be a unit-amplitude plane wave of the form $\mathbf{E}_{\text{inc}} = \mathbf{E}_0 \exp(ik_0 \hat{\mathbf{s}} \cdot \mathbf{r})$ with $\mathbf{E}_0 = E_0 \hat{\mathbf{x}}$ and $\hat{\mathbf{s}} = \hat{\mathbf{z}}$. Using (98) and (91), the extinguished power becomes

$$P_e = \frac{8\Omega}{3} E_0^2 a^3 \text{Im} \left(\frac{\eta^{(1)}}{1 - \frac{4\pi}{3} k^2 a^3 \eta^{(1)} G_R} \right). \quad (63)$$

We can write the above formula in a more familiar form in terms of the renormalized polarizability α , which is defined as

$$\alpha = \frac{\alpha_0}{1 - k^2 \alpha_0 [1/a + i \frac{2}{3} k]}, \quad (64)$$

where α_0 is the zero-frequency polarizability, which is defined in terms of the linear dielectric permittivity $\epsilon^{(1)}$. Here,

$$\alpha_0 = \frac{\epsilon^{(1)} - 1}{\epsilon^{(1)} + 2} a^3, \quad (65)$$

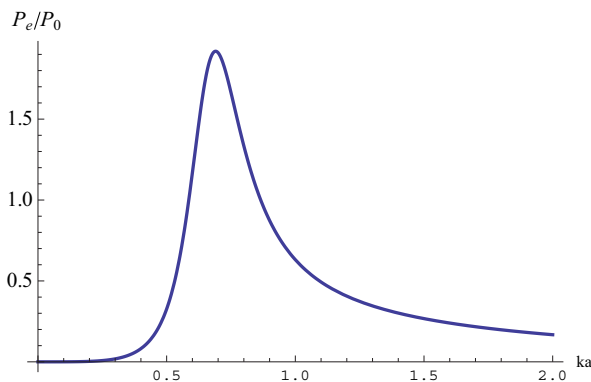


FIG. 1. (Color online) Frequency dependence of extinguished power for a single linear scatterer. Here, $P_0 = a^2 c E_0^2$.

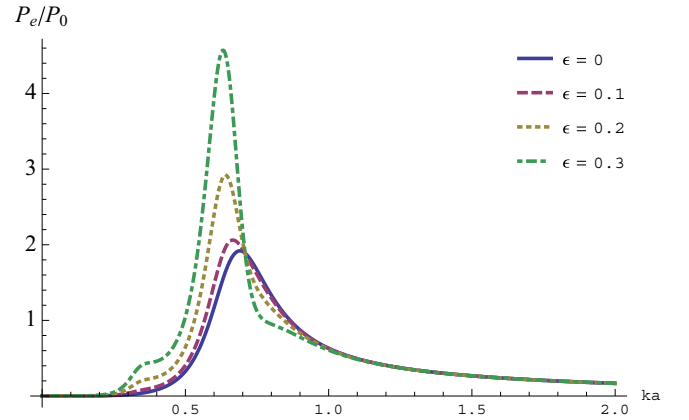


FIG. 2. (Color online) Frequency dependence of extinguished power for a single nonlinear scatterer with SHG. Here, $P_0 = a^2 c E_0^2$.

where $\epsilon^{(1)} = 1 + 4\pi \eta^{(1)}$. We find that (63) becomes

$$P_e = \frac{2\Omega}{\pi} E_0^2 \text{Im} \alpha. \quad (66)$$

In Fig. 1 we illustrate the frequency dependence of the extinguished power for a dielectric scatterer of size $a = 100$ nm with $\epsilon^{(1)} = -5.28$. We see that there is a scattering resonance at $ka \approx 0.7$.

B. Second-harmonic generation

We consider the case of a medium with isotropic $\eta^{(1)}$ and $\eta^{(2)}$ obeying permutation symmetry. That is, $\eta_{ij}^{(1)} = \eta^{(1)} \delta_{ij}$ and $\eta_{111}^{(2)} = \eta^{(2)}$, with the other $\eta_{ijk}^{(2)}$ vanishing. We also assume that the incident field \mathbf{E}_{inc} points in the x direction and the direction of observation $\hat{\mathbf{s}}$ is taken to be in the z direction. It follows from (B20) that the extinguished power P_e is given by

$$P_e = \frac{8\Omega}{3} a^3 \text{Im} \{ [\eta^{(1)} E_1^{(0)}(\mathbf{0}, \Omega) + \eta^{(1)} E_1^{(2)}(\mathbf{0}, \Omega) + 2\eta_{111}^{(2)} [E_1^{(0)}(\mathbf{0}, \Omega)]^* E_1^{(1)}(\mathbf{0}, 2\Omega)] E_{\text{inc},1}^*(\mathbf{0}, \Omega) \}. \quad (67)$$

In Fig. 2 we illustrate the frequency dependence of the extinguished power for SHG. The scatterer size is $a = 100$ nm and E_0 is taken to have unit amplitude. Plots are shown for $\epsilon = \eta^{(2)} E_0 / \eta^{(1)} = 0, 0.1, 0.2, 0.3$. We see that the resonance shifts

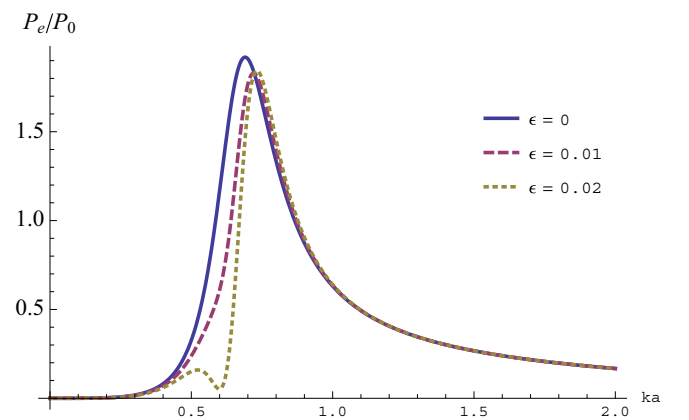


FIG. 3. (Color online) Frequency dependence of extinguished power for a single scatterer with Kerr nonlinearity. Here, $P_0 = a^2 c E_0^2$.

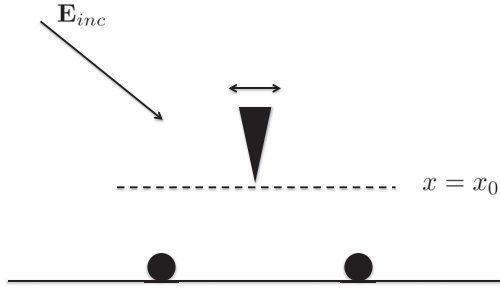


FIG. 4. Illustrating the apertureless NSOM experiment.

to lower frequencies and its amplitude increases by more than a factor of 2 relative to the linear case. The physical situation considered corresponds to the material β -BaB₂O₄ [8]. We note that there does not appear to be a simple physical argument to predict the extent or direction of the reported frequency shifts.

C. Kerr effect

We consider the case of a medium with isotropic $\eta^{(1)}$ and $\eta^{(3)}$ obeying the permutation symmetry. That is, $\eta_{ij}^{(1)} = \eta^{(1)}\delta_{ij}$ and $\eta_{1111}^{(3)} = \eta^{(3)}$, with all other $\eta_{ijkl}^{(3)}$ vanishing. We also assume that the incident field \mathbf{E}_{inc} points in the x direction and the direction of observation $\hat{\mathbf{s}}$ is taken to be in the z direction. It follows from (B32) that the extinguished power P_e is given by

$$P_e = \frac{8\Omega}{3}a^3\text{Im}\left\{\left[\eta^{(1)}E_1^{(0)}(\mathbf{0},\Omega) + \eta^{(1)}E_1^{(1)}(\mathbf{0},\Omega) + 3\eta_{1111}^{(3)}[E_1^{(0)}(\mathbf{0},\Omega)]^*E_1^{(0)}(\mathbf{0},\Omega)E_1^{(0)}(\mathbf{0},\Omega) \times E_{inc,1}^*(\mathbf{0},\Omega)\right]\right\}, \quad (68)$$

In Fig. 3 we illustrate the frequency dependence of the extinguished power for the Kerr effect. The scatterer size is $a = 100$ nm and E_0 is taken to have unit amplitude. Plots are shown for $\epsilon = \eta^{(3)}E_0^2/\eta^{(1)} = 0, 0.01, 0.02$. We see that the resonance shifts to higher frequencies relative to the linear case. As may be expected, the effect is less pronounced than in the case of SHG. As above, we do not know of a simple physical argument to predict the extent or direction of the reported frequency shifts.

VI. APPLICATION TO NEAR-FIELD MICROSCOPY

Near-field scanning optical microscopy (NSOM) is a widely used experimental tool to overcome the diffraction

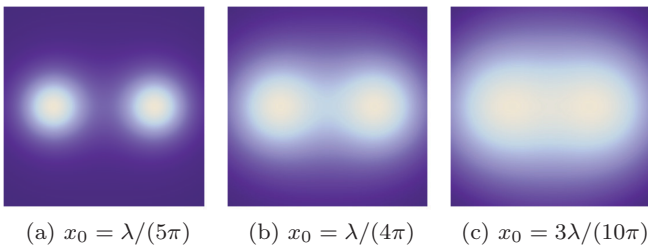


FIG. 5. (Color online) Apertureless NSOM images of the extinguished power P_e for SHG. The susceptibility of the tip is $\eta_{111}^{(2)}E_0/\hat{\eta}^{(1)} = 0.2$. Images are shown in the planes $x = x_0$ as indicated. The field of view of each image is $3\lambda/(5\pi) \times 3\lambda/(5\pi)$.

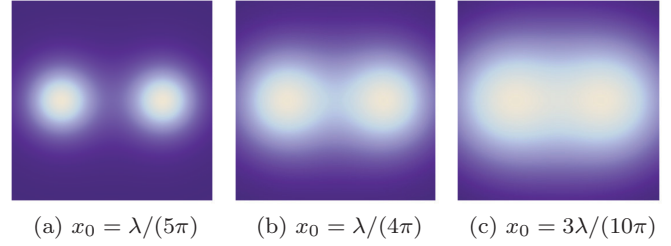


FIG. 6. (Color online) Apertureless NSOM images of the far-field intensity at frequency 2Ω in SHG. The susceptibility of the tip is $\eta_{111}^{(2)}E_0/\hat{\eta}^{(1)} = 0.2$. Images are shown in the planes $x = x_0$ as indicated. The field of view of each image is $3\lambda/(5\pi) \times 3\lambda/(5\pi)$.

limit of optical microscopy [23]. In a typical experiment, an apertured probe (often a metallic-coated optical fiber) is brought into the near field of a sample and employed as an optical source. The image is formed by scanning the probe and recording the intensity of light scattered into the far field. In a reciprocal arrangement, the probe may be used as a detector with the illumination incident from the far field. In either case, the resolution of the resulting image is controlled by the size of the probe rather than the wavelength of light.

Apertureless NSOM is an alternative to the above approach in which the illumination and detection both take place in the far field [23,24]. The experimental setup is illustrated in Fig. 4, in which an incident field illuminates a metallic tip that is placed in the near field of the sample. The image is obtained by scanning the tip and measuring the scattered field with a detector that is placed in the far field of the sample and the tip.

A refinement of apertureless NSOM is to introduce a fluorescent tip, which allows for the spectral isolation of the detected light and improvement in signal-to-noise ratio (SNR) by background suppression [25]. Spectral isolation may also be achieved by utilizing a tip that has a nonlinear optical response [16–22]. This approach has the advantage that it is not affected by fluorescent photobleaching. Experiments in which SHG, third-harmonic generation (THG), and four-wave mixing have been utilized for apertureless NSOM in a dark-field configuration have recently been reported [20].

In this section we develop a model for SHG and THG apertureless NSOM. We consider a system in which a nonlinear metallic tip is placed in the near field of a pair of small dielectric particles, which are taken to have only a linear optical response. The setup is shown in Fig. 4 and

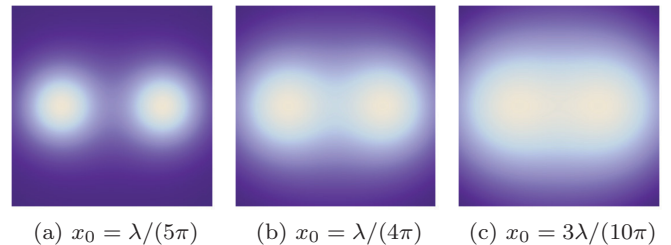


FIG. 7. (Color online) Apertureless NSOM images of the extinguished power P_e for THG. The susceptibility of the tip is $\eta_{111}^{(3)}E_0/\hat{\eta}^{(1)} = 0.2$. Images are shown in the planes $x = x_0$ as indicated. The field of view of each image is $3\lambda/(5\pi) \times 3\lambda/(5\pi)$.

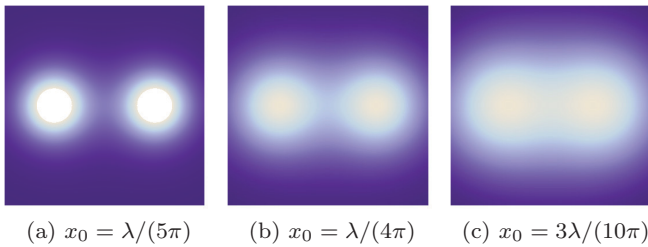


FIG. 8. (Color online) Apertureless NSOM images of the far-field intensity at frequency 3Ω in THG. The susceptibility of the tip is $\eta_{1111}^{(3)} E_0 / \hat{\eta}^{(1)} = 0.2$. Images are shown in the planes $x = x_0$ as indicated. The field of view of each image is $3\lambda/(5\pi) \times 3\lambda/(5\pi)$.

the mathematical details are presented in Appendix C. We begin with the case of SHG. The sample consists of a pair of dielectric spheres of radius $\lambda/(10\pi)$ and susceptibility $\hat{\eta}_{ij}^{(1)} = 0.4\delta_{ij}$, located at the positions $\mathbf{r}_1 = (0, \frac{3\lambda}{20\pi}, 0)$ and $\mathbf{r}_2 = (0, -\frac{3\lambda}{20\pi}, 0)$, which corresponds to a separation of $\approx \lambda/10$. The tip has radius $a = \lambda/(10\pi)$, linear susceptibility $\eta^{(1)} = -0.4$, second-order susceptibility $\eta_{111}^{(2)}$, with $\eta_{111}^{(2)} E_0 / \hat{\eta}^{(1)} = 0.2$ and all other $\eta_{ijkl}^{(2)}$ vanishing, and is scanned in the planes $x = x_0$. In all numerical experiments, the incident electric field is a plane-wave polarized in the x direction with wave vector $k(\Omega)\hat{\mathbf{z}}$. In Fig. 5 images of the extinguished power are shown in three different scan planes corresponding to $x_0 = 2a, 2.5a$, and $3a$. We see that the scatterers are well resolved with subwavelength separation in the closest scan plane and that the resolution degrades rapidly with distance from the plane $x = 0$. Qualitatively similar results are found for the intensity of scattered second-harmonic light, as illustrated in Fig. 6.

Next, we consider the case of THG. The setup is the same as in the case of SHG, except that the third-order susceptibility of the tip is $\eta_{1111}^{(3)}$, with $\eta_{1111}^{(3)} E_0^2 / \hat{\eta}^{(1)} = 0.2$ and all other $\eta_{ijkl}^{(3)}$ vanishing. Once again, we find that the scatterers are better resolved in the closest scan plane. We also note that the relative extinguished power is smaller than in the case of SHG and that the intensity of the scattered third harmonic is correspondingly greater. See Figs. 7 and 8. In Fig. 9 the extinguished power along a line in the closest scan plan is compared for SHG and THG. It is found that the the extinguished power for the case

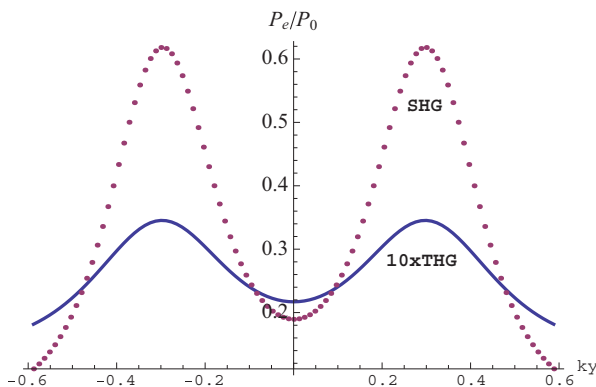


FIG. 9. (Color online) Extinguished power P_e/P_0 along the line defined by $x = \lambda/(5\pi)$ and $z = 0$, which corresponds to the closest scanning plane. Graphs are shown for SHG and THG. Here, $P_0 = a^2 c E_0^2$.

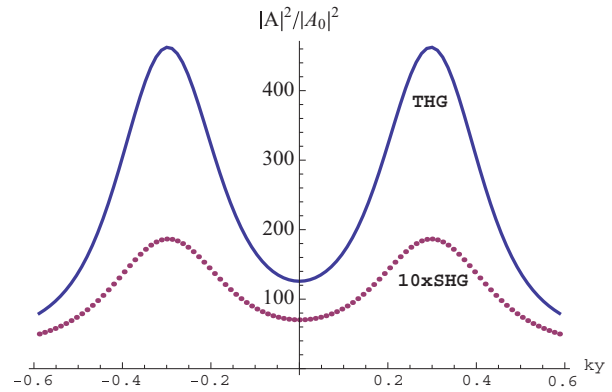


FIG. 10. (Color online) Far-field intensity along the line defined by $x = \lambda/(5\pi)$ and $z = 0$, which corresponds to the closest scanning plane. Graphs are shown for SHG and THG. Here, $A_0 = a E_0$.

of a SHG tip is an order of magnitude larger than for a tip exhibiting THG. The corresponding result for the scattering amplitude is shown in Fig. 10.

VII. DISCUSSION

In this paper we have presented a generalization of the optical theorem for the scattering of nonlinear electromagnetic waves. We consider in some detail the most important examples of quadratic and cubic nonlinearities. The theory is illustrated for the case of small inhomogeneities in the settings of second-harmonic generation and the Kerr effect. In particular, we describe the manner in which scattering resonances are modified by the presence of nonlinearity. As a second application, we consider the problem of computing the signal in a nonlinear near-field microscopy experiment. We note that the use of a tip with a nonlinear optical response affords the possibility of background suppression and spectral isolation of the detected signal. In future work, we plan to study the inverse problem for nonlinear near-field microscopy, whose goal is to reconstruct the linear optical properties of a sample illuminated by a nonlinear tip. This will necessitate the development of a scattering theory that incorporates contributions from the tip and the sample and their respective interactions, as was done for the corresponding linear problem [26].

ACKNOWLEDGMENTS

We thank the referee for helpful suggestions. This work was supported in part by the NSF Grants No. DMR-1120923, No. DMS-1115574, and No. DMS-1108969.

APPENDIX A: CONSERVATION OF ENERGY

Here, we show that for nondispersive media, the analog of the Manly-Rowe relations, hold [8]. That is, if the susceptibilities $\chi_{ij}^{(1)}$, $\chi_{ijk}^{(2)}$, and $\chi_{ijkl}^{(3)}$ are purely real, then $\nabla \cdot \tilde{\mathbf{S}} = 0$. We treat the cases of quadratic and cubic nonlinearity separately. Note that for an incident field consisting of a sum of a finite number of frequencies, the integral in Eq. (25) becomes a sum.

1. Quadratic nonlinearity

We begin by inserting the quadratic polarization (15) into the statement of energy conservation (21). We then have

$$\nabla \cdot \mathbf{S}(\mathbf{r}, \omega) = \frac{\omega}{8\pi^3} \text{Im} [E_i^*(\mathbf{r}, \omega) \chi_{ij}^{(1)}(\mathbf{r}; \omega) E_j(\omega)] + \frac{\omega}{8\pi^3} \text{Im} \left(\sum_{\omega_1 + \omega_2 = \omega} \chi_{ijk}^{(2)}(\mathbf{r}; \omega_1, \omega_2) E_i^*(\mathbf{r}, \omega) E_j(\mathbf{r}, \omega_1) E_k(\mathbf{r}, \omega_2) \right). \quad (\text{A1})$$

Making use of (25), the time-averaged divergence of energy current is

$$\nabla \cdot \bar{\mathbf{S}}(\mathbf{r}) = \sum_{\omega} \frac{\omega}{8\pi^3} \text{Im} [\chi_{ij}^{(1)}(\mathbf{r}; \omega) E_i^*(\mathbf{r}, \omega) E_j(\mathbf{r}, \omega)] + \sum_{\omega_1 + \omega_2 = \omega} \frac{\omega}{8\pi^3} \text{Im} [\chi_{ijk}^{(2)}(\mathbf{r}; \omega_1, \omega_2) E_i^*(\mathbf{r}, \omega) E_j(\mathbf{r}, \omega_1) E_k(\mathbf{r}, \omega_2)]. \quad (\text{A2})$$

The first sum is zero since $\chi_{ij}^{(1)}(\mathbf{r}; \omega) E_i^*(\mathbf{r}, \omega) E_j(\mathbf{r}, \omega)$ is real for each ω , due to the permutation symmetry of $\chi_{ij}^{(1)}$. The second sum vanishes as a consequence of the overall permutation symmetry of $\chi_{ijk}^{(2)}$ and the constraint $\omega_1 + \omega_2 = \omega$.

2. Cubic nonlinearity

For cubic nonlinearity we have

$$\nabla \cdot \bar{\mathbf{S}}(\mathbf{r}) = \sum_{\omega} \frac{\omega}{8\pi^3} \text{Im} [\chi_{ij}^{(1)}(\mathbf{r}; \omega) \mathbf{E}_i^*(\mathbf{r}, \omega) \mathbf{E}_j(\mathbf{r}, \omega)] + \sum_{\omega_1 + \omega_2 + \omega_3 = \omega} \frac{\omega}{8\pi^3} \text{Im} [\chi_{ijkl}^{(3)}(\mathbf{r}; \omega_1, \omega_2, \omega_3) \mathbf{E}_i^*(\mathbf{r}, \omega) \mathbf{E}_j(\mathbf{r}, \omega_1) \mathbf{E}_k(\mathbf{r}, \omega_2) \mathbf{E}_l(\mathbf{r}, \omega_3)]. \quad (\text{A3})$$

The first sum is zero by the same argument as above. The second sum can be shown to be zero using the overall permutation symmetry of $\chi_{ijkl}^{(3)}$ and the constraint $\omega_1 + \omega_2 + \omega_3 = \omega$.

APPENDIX B: CALCULATION OF LOCAL FIELDS

Here, we calculate the local fields of small scatterers for both second-harmonic generation and the Kerr effect.

1. Second-harmonic generation

We now calculate the local fields $E_i(\mathbf{0}, \Omega)$ and $E_i(\mathbf{0}, 2\Omega)$. To proceed, we set $\mathbf{r} = \mathbf{0}$ in Eqs. (50) and (51) and thus obtain

$$E_i(\mathbf{0}, \Omega) = E_{\text{inc},i}(\mathbf{0}, \Omega) + k^2(\Omega) \eta_{jk}^{(1)} \int_{|\mathbf{r}'| \leq a} d^3 r' G_{ij}(\mathbf{0}, \mathbf{r}'; \Omega) E_k(\mathbf{r}', \Omega) + 2k^2(\Omega) \eta_{jkl}^{(2)} \int_{|\mathbf{r}'| \leq a} d^3 r' G_{ij}(\mathbf{0}, \mathbf{r}'; \Omega) E_k(\mathbf{r}', \Omega) E_l^*(\mathbf{r}', 2\Omega), \quad (\text{B1})$$

$$E_i(\mathbf{0}, 2\Omega) = k^2(2\Omega) \eta_{jk}^{(1)} \int_{|\mathbf{r}'| \leq a} d^3 r' G_{ij}(\mathbf{0}, \mathbf{r}'; 2\Omega) E_k(\mathbf{r}', 2\Omega) + k^2(\Omega) \eta_{jkl}^{(2)} \int_{|\mathbf{r}'| \leq a} d^3 r' G_{ij}(\mathbf{0}, \mathbf{r}'; 2\Omega) E_k(\mathbf{r}', \Omega) E_l(\mathbf{r}', \Omega). \quad (\text{B2})$$

Next, we use the fact that for a function g_j ,

$$\int_{|\mathbf{r}'| \leq a} d^3 r' G_{ij}(\mathbf{0}, \mathbf{r}'; \omega) g_j(\mathbf{r}', \omega) = \frac{4\pi a^3}{3} \left(\frac{1}{a} + i \frac{2}{3} k(\omega) - \frac{1}{a^3 k^2(\omega)} + O(k^2(\omega)a) \right) g_i(\mathbf{0}, \omega) [1 + O(k(\omega)a)], \quad (\text{B3})$$

which is derived in Appendix B 3. We then find that (B1) and (B2) lead to a system of equations for the local fields which are of the form

$$E_i(\mathbf{0}, \Omega) = E_{\text{inc},i}(\mathbf{0}, \Omega) + \frac{4\pi}{3} k^2(\Omega) a^3 G_R(\Omega) [\eta_{ij}^{(1)} E_j(\mathbf{0}, \Omega) + 2\eta_{ijk}^{(2)} E_j(\mathbf{0}, 2\Omega) E_k^*(\mathbf{0}, \Omega)], \quad (\text{B4})$$

$$E_i(\mathbf{0}, 2\Omega) = \frac{4\pi}{3} k^2(2\Omega) a^3 G_R(2\Omega) [\eta_{ij}^{(1)} E_j(\mathbf{0}, 2\Omega) + \eta_{ijk}^{(2)} E_j(\mathbf{0}, \Omega) E_k(\mathbf{0}, \Omega)], \quad (\text{B5})$$

where

$$G_R(\omega) = \frac{1}{a} + i \frac{2}{3} k(\omega) - \frac{1}{a^3 k^2(\omega)}. \quad (\text{B6})$$

The above is a set of nonlinear algebraic equations which we solve perturbatively. To proceed, we introduce a parameter ϵ to scale the nonlinear terms in Eqs. (B4) and (B5):

$$E_i(\mathbf{0}, \Omega) = E_{\text{inc},i}(\mathbf{0}, \Omega) + \frac{4\pi}{3}k^2(\Omega)a^3 G_R(\Omega) [\eta_{ij}^{(1)} E_j(\mathbf{0}, \Omega) + 2\epsilon \eta_{ijk}^{(2)} E_j(\mathbf{0}, 2\Omega) E_k^*(\mathbf{0}, \Omega)], \quad (\text{B7})$$

$$E_i(\mathbf{0}, 2\Omega) = \frac{4\pi}{3}k^2(2\Omega)a^3 G_R(2\Omega) [\eta_{ij}^{(1)} E_j(\mathbf{0}, 2\Omega) + \epsilon \eta_{ijk}^{(2)} E_j(\mathbf{0}, \Omega) E_k(\mathbf{0}, \Omega)]. \quad (\text{B8})$$

We then introduce asymptotic expansions for the fields of the form

$$E_i(0, \Omega) = E_i^{(0)}(0, \Omega) + \epsilon E_i^{(1)}(0, \Omega) + \epsilon^2 E_i^{(2)}(0, \Omega) + \dots, \quad (\text{B9})$$

$$E_i(0, 2\Omega) = E_i^{(0)}(0, 2\Omega) + \epsilon E_i^{(1)}(0, 2\Omega) + \epsilon^2 E_i^{(2)}(0, 2\Omega) + \dots. \quad (\text{B10})$$

For simplicity, we consider the case of isotropic $\eta^{(1)}$ and $\eta^{(2)}$ obeying permutation symmetry. That is, $\eta_{ij}^{(1)} = \eta^{(1)} \delta_{ij}$ and $\eta_{111}^{(2)} = \eta^{(2)}$, with the other $\eta_{ijk}^{(2)}$ vanishing. We also assume that the incident field \mathbf{E}_{inc} points in the x direction and the direction of observation $\hat{\mathbf{s}}$ is taken to be in the z direction. To simplify the notation, we set $\Omega_1 = \Omega$, $\Omega_2 = 2\Omega$, and write $(E_i)_j = E_j(\mathbf{0}, \Omega_i)$, $k_i = \Omega_i/c$, $(E_{\text{inc}})_i = E_{\text{inc},i}(\mathbf{0}, \Omega)$, and $G_{Ri} = G_R(\Omega_i)$. Then, (B7) and (B8) become

$$(E_1)_i = (E_{\text{inc}})_i + \frac{4\pi}{3}k_1^2 a^3 G_{R1} [\eta^{(1)}(E_1)_i + 2\epsilon \eta_{ijk}^{(2)} (E_1^*)_j (E_2)_k],$$

$$(E_2)_i = \frac{4\pi}{3}k_2^2 a^3 G_{R2} [\eta^{(1)}(E_2)_i + \epsilon \eta_{ijk}^{(2)} (E_1)_j (E_1)_k]. \quad (\text{B11})$$

Next, we expand the fields $(E_i)_j$ according to (B4) and (B5) and collect like powers of ϵ . At $O(1)$ we have that

$$(E_1)_i^{(0)} = (E_{\text{inc}})_i + \frac{4\pi}{3}k_1^2 a^3 G_{R1} \eta^{(1)} (E_1)_i^{(0)},$$

$$(E_2)_i^{(0)} = 0. \quad (\text{B12})$$

Thus,

$$(E_1)_1^{(0)} = \frac{(E_{\text{inc}})_1}{1 - \frac{4\pi}{3}k_1^2 a^3 G_{R1} \eta^{(1)}}. \quad (\text{B13})$$

At $O(\epsilon)$ we have

$$(E_1)_i^{(1)} = \frac{4\pi}{3}k_1^2 a^3 G_{R1} \eta^{(1)} (E_1)_i^{(1)},$$

$$(E_2)_i^{(1)} = \frac{4\pi}{3}k_2^2 a^3 G_{R2} [\eta^{(1)}(E_2)_i^{(1)} + \eta_{ijk}^{(2)} (E_1)_j^{(0)} (E_1)_k^{(0)}], \quad (\text{B14})$$

which gives

$$(E_2)_1^{(1)} = \frac{4\pi}{3}k_2^2 a^3 G_{R2} [\eta^{(1)}(E_2)_1^{(1)} + \eta_{111}^{(2)} (E_1)_1^{(0)} (E_1)_1^{(0)}]. \quad (\text{B15})$$

Thus,

$$(E_2)_1^{(1)} = \frac{\frac{4\pi}{3}k_2^2 a^3 G_{R2} \eta_{111}^{(2)} (E_1)_1^{(0)} (E_1)_1^{(0)}}{1 - \frac{4\pi}{3}k_2^2 a^3 G_{R2} \eta^{(1)}}. \quad (\text{B16})$$

At $O(\epsilon^2)$ we obtain

$$(E_1)_i^{(2)} = \frac{4\pi}{3}k_1^2 a^3 G_{R1} [\eta^{(1)}(E_1)_i^{(2)} + 2\eta_{ijk}^{(2)} (E_1^*)_j^{(0)} (E_2)_k^{(1)}], \quad (\text{B17})$$

which gives

$$(E_1)_1^{(2)} = \frac{4\pi}{3}k_1^2 a^3 G_{R1} [\eta^{(1)}(E_1)_1^{(2)} + 2\eta_{111}^{(2)} (E_2)_1^{(1)} (E_1^*)_1^{(0)}]. \quad (\text{B18})$$

Thus,

$$(E_1)_1^{(2)} = \frac{\frac{4\pi}{3}k_1^2 a^3 G_{R1} 2\eta_{111}^{(2)} (E_1^*)_1^{(0)} (E_2)_1^{(1)}}{1 - \frac{4\pi}{3}k_1^2 a^3 G_{R1} \eta^{(1)}}. \quad (\text{B19})$$

We can now calculate the extinguished power P_e from (41). We find that up to the order $O(\epsilon^2)$

$$P_e = \frac{8\Omega_1}{3} a^3 \text{Im} \{ [\eta^{(1)}(E_1)_1^{(0)} + \eta^{(1)}(E_1)_1^{(2)} + 2\eta_{111}^{(2)} (E_1^*)_1^{(0)} (E_2)_1^{(1)}] (E_{\text{inc}})_1^* \}. \quad (\text{B20})$$

2. Kerr effect

Here, we calculate the local field $E_i(\mathbf{0}, \Omega)$. To proceed, we set $\mathbf{r} = 0$ in Eq. (60) and thus obtain

$$E_i(\mathbf{0}, \Omega) = E_{\text{inc},i}(\mathbf{0}, \Omega) + k^2(\Omega) \eta_{jk}^{(1)} \int_{|\mathbf{r}'| \leq a} d^3 r' G_{ij}(\mathbf{0}, \mathbf{r}'; \Omega) \times E_k(\mathbf{r}', \Omega) + 3k^2(\Omega) \eta_{jklm}^{(3)} \int_{|\mathbf{r}'| \leq a} d^3 r' G_{ij}(\mathbf{0}, \mathbf{r}'; \Omega) \times E_k(\mathbf{r}', \Omega) E_l(\mathbf{r}', \Omega) E_m^*(\mathbf{r}', \Omega). \quad (\text{B21})$$

We then find that (B21) leads to an equation for the local field which is of the form

$$E_i(\mathbf{0}, \Omega) = E_{\text{inc},i}(\mathbf{0}, \Omega) + \frac{4\pi}{3}k^2 a^3(\Omega) G_R(\Omega) [\eta^{(1)} E_i(\mathbf{0}, \Omega) + 3\eta_{ijkl}^{(3)} E_j^*(\mathbf{0}, \Omega) E_k(\mathbf{0}, \Omega) E_l(\mathbf{0}, \Omega)]. \quad (\text{B22})$$

The above is a nonlinear algebraic equation which we solve perturbatively. To proceed, we introduce a parameter ϵ to scale the nonlinear terms in Eq. (B22):

$$E_i(\mathbf{0}, \Omega) = E_{\text{inc},i}(\mathbf{0}, \Omega) + \frac{4\pi}{3}k^2 a^3(\Omega) G_R(\Omega) [\eta^{(1)} E_i(\mathbf{0}, \Omega) + 3\epsilon \eta_{ijkl}^{(3)} E_j^*(\mathbf{0}, \Omega) E_k(\mathbf{0}, \Omega) E_l(\mathbf{0}, \Omega)]. \quad (\text{B23})$$

We then introduce asymptotic expansions for the field of the form

$$E_i(0, \Omega) = E_i^{(0)}(0, \Omega) + \epsilon E_i^{(1)}(0, \Omega) + \epsilon^2 E_i^{(2)}(0, \Omega) + \dots. \quad (\text{B24})$$

For simplicity, we consider the case of isotropic $\eta^{(1)}$ and $\eta^{(3)}$ obeying the permutation symmetry. That is, $\eta_{ij}^{(1)} = \eta^{(1)}\delta_{ij}$ and $\eta_{1111}^{(3)} = \eta^{(3)}$, with all other $\eta_{ijkl}^{(3)}$ vanishing. We also assume that the incident field \mathbf{E}_{inc} points in the x direction and the direction of observation $\hat{\mathbf{s}}$ is taken to be in the z direction. To simplify the notation, we write $(E)_j = E_j(\mathbf{0}, \Omega)$, $k = \Omega/c$, and $G_R = G_R(\Omega)$. Then, (B23) becomes

$$(E)_i = (E_{\text{inc}})_i + \frac{4\pi}{3}k^2a^3G_R[\eta^{(1)}(E)_i + 3\epsilon\eta_{ijkl}^{(3)}(E^*)_j(E)_k(E)_l]. \quad (\text{B25})$$

Next, we expand the fields $(E)_i$ according to (B24) and collect like powers of ϵ . At $O(1)$ we have that

$$(E)_i^{(0)} = (E_{\text{inc}})_i + \frac{4\pi}{3}k^2a^3G_R\eta^{(1)}(E)_i^{(0)}. \quad (\text{B26})$$

Thus,

$$(E)_1^{(0)} = \frac{E_{\text{inc},i}}{1 - \frac{4\pi}{3}k^2a^3G_R\eta^{(1)}}. \quad (\text{B27})$$

At $O(\epsilon)$ we have

$$(E)_i^{(1)} = \frac{4\pi}{3}k^2a^3G_R[\eta^{(1)}(E)_i^{(1)} + 3\eta_{ijkl}^{(3)}(E^*)_j^{(0)}(E)_k^{(0)}(E)_l^{(0)}], \quad (\text{B28})$$

which gives

$$(E)_i^{(1)} = \frac{4\pi}{3}k^2a^3G_R[\eta^{(1)}(E)_i^{(1)} + 3\eta_{i111}^{(3)}(E^*)_1^{(0)}(E)_1^{(0)}(E)_1^{(0)}]. \quad (\text{B29})$$

Thus,

$$(E)_i^{(1)}(\mathbf{0}) = \frac{\frac{4\pi}{3}k^2a^3G_R3\eta_{i111}^{(3)}(E^*)_1^{(0)}(0)(E)_1^{(0)}(0)(E)_1^{(0)}(0)}{1 - \frac{4\pi}{3}k^2a^3G_R\eta^{(1)}} \quad (\text{B30})$$

and

$$(E)_1^{(1)}(\mathbf{0}) = \frac{\frac{4\pi}{3}k^2a^3G_R3\eta_{1111}^{(3)}(E^*)_1^{(0)}(0)(E)_1^{(0)}(0)(E)_1^{(0)}(0)}{1 - \frac{4\pi}{3}k^2a^3G_R\eta^{(1)}}. \quad (\text{B31})$$

We can now calculate the extinguished power P_e from (41). We find that up to the order $O(\epsilon)$,

$$P_e = \frac{8\Omega_1}{3}a^3 \text{Im}\{[\eta^{(1)}(E)_1^{(0)} + \eta^{(1)}(E)_1^{(1)} + 3\eta_{1111}^{(3)}(E^*)_1^{(0)}(E)_1^{(0)}(E)_1^{(0)}](E_{\text{inc}})_1^*\}. \quad (\text{B32})$$

3. Evaluation of the integral (B3)

Here, we show

$$\int_{|\mathbf{r}'| \leq a} d^3r' G_{ij}(\mathbf{0}, \mathbf{r}'; \omega) = \frac{4\pi a^3}{3} \left(\frac{1}{a} + i\frac{2}{3}k(\omega) - \frac{1}{a^3k^2(\omega)} + O(k^2(\omega)a) \right). \quad (\text{B33})$$

For notational convenience, we put $k = k(\Omega)$. Then,

$$\int_{|\mathbf{r}'| \leq a} d^3r' G_{ij}(\mathbf{0}, \mathbf{r}'; \omega) = \int_{|\mathbf{r}'| \leq a} d^3r \left(\delta_{ij} + \frac{1}{k^2} \partial_i \partial_j \right) \frac{e^{ikr}}{r}. \quad (\text{B34})$$

The second term vanishes when $i \neq j$. Using the fact that

$$(\nabla^2 + k^2) \frac{e^{ikr}}{r} = -4\pi \delta(\mathbf{r}), \quad (\text{B35})$$

we have

$$\begin{aligned} \int_{|\mathbf{r}'| \leq a} d^3r \frac{1}{k^2} \partial_i \partial_j \frac{e^{ikr}}{r} &= \int_{|\mathbf{r}'| \leq a} d^3r \delta_{ij} \frac{1}{k^2} \frac{1}{3} \left(-k^2 \frac{e^{ikr}}{r} - 4\pi \delta(\mathbf{r}) \right) \\ &= -\delta_{ij} \left(\int_{|\mathbf{r}'| \leq a} d^3r \frac{e^{ikr}}{3r} + \frac{4\pi}{3k^2} \right). \end{aligned} \quad (\text{B36})$$

So

$$\int_{|\mathbf{r}'| \leq a} d^3r' G_{ij}(\mathbf{0}, \mathbf{r}'; \omega) = \delta_{ij} \left(\int_{|\mathbf{r}'| \leq a} d^3r \frac{2}{3} \frac{e^{ikr}}{r} - \frac{4\pi}{3k^2} \right). \quad (\text{B37})$$

Since

$$\int_{|\mathbf{r}'| \leq a} d^3r \frac{e^{ikr}}{r} = \frac{4\pi a^3}{3} \left(\frac{3}{2a} + ik + O(k^2a) \right), \quad (\text{B38})$$

we obtain the required result.

APPENDIX C: NSOM

Here, we derive the basic equations governing the NSOM experiments described in Sec. VI.

1. Second-harmonic generation

The sample and the tip are taken to be small balls of radius a centered at \mathbf{r}_0 , \mathbf{r}_1 , and \mathbf{r}_2 . The corresponding susceptibilities are $\chi_{ij}^{(1)}(\mathbf{r}; \omega) = \hat{\eta}_{ij}^{(1)}$ for $|\mathbf{r} - \mathbf{r}_0| \leq a$, $\chi_{ij}^{(1)}(\mathbf{r}; \omega) = \eta_{ij}^{(1)}$ for $|\mathbf{r} - \mathbf{r}_1| \leq a$ and $|\mathbf{r} - \mathbf{r}_2| \leq a$, and $\chi_{ijk}^{(2)}(\mathbf{r}; \omega) = \eta_{ijk}^{(2)}$ for $|\mathbf{r}| \leq a$. In this setting, the solutions to the wave equations of SHG (46) and (47) are

$$\begin{aligned} E_i(\mathbf{r}, \Omega) &= E_{\text{inc},i}(\mathbf{r}, \Omega) + k^2(\Omega) \hat{\eta}_{jk}^{(1)} \int_{|\mathbf{r}' - \mathbf{r}_0| \leq a} d^3r' G_{ij}(\mathbf{r}, \mathbf{r}'; \Omega) E_k(\mathbf{r}', \Omega) + k^2(\Omega) \eta_{jk}^{(1)} \int_{|\mathbf{r}' - \mathbf{r}_1| \leq a} d^3r' G_{ij}(\mathbf{r}, \mathbf{r}'; \Omega) E_k(\mathbf{r}', \Omega) \\ &\quad + k^2(\Omega) \eta_{jk}^{(1)} \int_{|\mathbf{r}' - \mathbf{r}_2| \leq a} d^3r' G_{ij}(\mathbf{r}, \mathbf{r}'; \Omega) E_k(\mathbf{r}', \Omega) + 2k^2(\Omega) \eta_{jkl}^{(2)} \int_{|\mathbf{r}' - \mathbf{r}_0| \leq a} d^3r' G_{ij}(\mathbf{r}, \mathbf{r}'; \Omega) E_k(\mathbf{r}', 2\Omega) E_l^*(\mathbf{r}', \Omega), \end{aligned} \quad (\text{C1})$$

$$\begin{aligned}
E_i(\mathbf{r}, 2\Omega) = & k^2(2\Omega)\hat{\eta}_{jk}^{(1)} \int_{|\mathbf{r}'-\mathbf{r}_0|\leq a} d^3r' G_{ij}(\mathbf{r}, \mathbf{r}'; \Omega) E_k(\mathbf{r}', 2\Omega) + k^2(2\Omega)\eta_{jk}^{(1)} \int_{|\mathbf{r}'-\mathbf{r}_1|\leq a} d^3r' G_{ij}(\mathbf{r}, \mathbf{r}'; \Omega) E_k(\mathbf{r}', 2\Omega) \\
& + k^2(2\Omega)\eta_{jk}^{(1)} \int_{|\mathbf{r}'-\mathbf{r}_2|\leq a} d^3r' G_{ij}(\mathbf{r}, \mathbf{r}'; \Omega) E_k(\mathbf{r}', 2\Omega) + k^2(2\Omega)\eta_{jkl}^{(2)} \int_{|\mathbf{r}'-\mathbf{r}_0|\leq a} d^3r' G_{ij}(\mathbf{r}, \mathbf{r}'; \Omega) E_k(\mathbf{r}', \Omega) E_l(\mathbf{r}', \Omega). \quad (\text{C2})
\end{aligned}$$

Using the asymptotic form of the Green's function given in Eq. (29), we find that the scattered fields are of the form

$$E_i^s(\mathbf{r}, \Omega) = A_i(\mathbf{r}, \Omega) \frac{e^{ik(\Omega)r}}{r}, \quad (\text{C3})$$

$$E_i^s(\mathbf{r}, 2\Omega) = A_i(\mathbf{r}, 2\Omega) \frac{e^{ik(2\Omega)r}}{r}, \quad (\text{C4})$$

where the scattering amplitudes are defined by

$$\begin{aligned}
A_i(\mathbf{r}, \Omega) = & \frac{4\pi}{3} a^3 (\delta_{ij} - \hat{r}_i \hat{r}_j) k^2(\Omega) [\hat{\eta}_{jk}^{(1)} E_k(\mathbf{r}_0, \Omega) + 2\eta_{jkl}^{(2)} E_k(\mathbf{r}_0, 2\Omega) E_l^*(\mathbf{r}_0, \Omega)] e^{ik(\Omega)\hat{\mathbf{r}}\cdot\mathbf{r}_0} \\
& + \frac{4\pi}{3} a^3 (\delta_{ij} - \hat{r}_i \hat{r}_j) k^2(\Omega) \eta_{jk}^{(1)} E_k(\mathbf{r}_1, \Omega) e^{ik(\Omega)\hat{\mathbf{r}}\cdot\mathbf{r}_1} + \frac{4\pi}{3} a^3 (\delta_{ij} - \hat{r}_i \hat{r}_j) k^2(\Omega) \eta_{jk}^{(1)} E_k(\mathbf{r}_2, \Omega) e^{ik(\Omega)\hat{\mathbf{r}}\cdot\mathbf{r}_2}, \quad (\text{C5})
\end{aligned}$$

$$\begin{aligned}
A_i(\mathbf{r}, 2\Omega) = & \frac{4\pi}{3} a^3 (\delta_{ij} - \hat{r}_i \hat{r}_j) k^2(2\Omega) [\hat{\eta}_{jk}^{(1)} E_j(\mathbf{r}_0, 2\Omega) + \eta_{jkl}^{(2)} E_k(\mathbf{r}_0, \Omega) E_l(\mathbf{r}_0, \Omega)] e^{ik(2\Omega)\hat{\mathbf{r}}\cdot\mathbf{r}_0} \\
& + \frac{4\pi}{3} a^3 (\delta_{ij} - \hat{r}_i \hat{r}_j) k^2(2\Omega) \eta_{jk}^{(1)} E_k(\mathbf{r}_1, 2\Omega) e^{ik(2\Omega)\hat{\mathbf{r}}\cdot\mathbf{r}_1} + \frac{4\pi}{3} a^3 (\delta_{ij} - \hat{r}_i \hat{r}_j) k^2(2\Omega) \eta_{jk}^{(1)} E_k(\mathbf{r}_2, 2\Omega) e^{ik(2\Omega)\hat{\mathbf{r}}\cdot\mathbf{r}_2}. \quad (\text{C6})
\end{aligned}$$

Setting $\mathbf{r} = \mathbf{r}_0$, $\mathbf{r} = \mathbf{r}_1$, and $\mathbf{r} = \mathbf{r}_2$ in Eqs. (C1) and (C2), and carrying out the indicated integrations, we obtain

$$\begin{aligned}
E_i(\mathbf{r}_0, \Omega) = & E_{\text{inc},i}(\mathbf{r}_0, \Omega) + \frac{4\pi}{3} k^2(\Omega) a^3 G_R(\Omega) [\hat{\eta}_{ij}^{(1)} E_j(\mathbf{r}_0, \Omega) + 2\eta_{ijk}^{(2)} E_j(\mathbf{r}_0, 2\Omega) E_k^*(\mathbf{r}_0, \Omega)] \\
& + \frac{4\pi}{3} k^2(\Omega) a^3 G_{ij}(\mathbf{r}_1, \mathbf{r}_0; \Omega) \eta_{jk}^{(1)} E_k(\mathbf{r}_1, \Omega) + \frac{4\pi}{3} k^2(\Omega) a^3 G_{ij}(\mathbf{r}_2, \mathbf{r}_0; \Omega) \eta_{jk}^{(1)} E_k(\mathbf{r}_2, \Omega), \quad (\text{C7})
\end{aligned}$$

$$\begin{aligned}
E_i(\mathbf{r}_0, 2\Omega) = & \frac{4\pi}{3} k^2(2\Omega) a^3 G_R(2\Omega) [\hat{\eta}_{ij}^{(1)} E_j(\mathbf{r}_0, 2\Omega) + \eta_{ijk}^{(2)} E_j(\mathbf{r}_0, \Omega) E_k(\mathbf{r}_0, \Omega)] + \frac{4\pi}{3} k^2(2\Omega) a^3 G_{ij}(\mathbf{r}_1, \mathbf{r}_0; 2\Omega) \eta_{jk}^{(1)} E_k(\mathbf{r}_1, 2\Omega) \\
& + \frac{4\pi}{3} k^2(2\Omega) a^3 G_{ij}(\mathbf{r}_2, \mathbf{r}_0; 2\Omega) \eta_{jk}^{(1)} E_k(\mathbf{r}_2, 2\Omega), \quad (\text{C8})
\end{aligned}$$

$$\begin{aligned}
E_i(\mathbf{r}_1, \Omega) = & E_{\text{inc},i}(\mathbf{r}_1, \Omega) + \frac{4\pi}{3} k^2(\Omega) a^3 G_R(\Omega) \eta_{ij}^{(1)} E_j(\mathbf{r}_1, \Omega) + \frac{4\pi}{3} k^2(\Omega) a^3 G_{ij}(\mathbf{r}_1, \mathbf{r}_0; \Omega) [\hat{\eta}_{jk}^{(1)} E_k(\mathbf{r}_0, \Omega) \\
& + 2\eta_{jkl}^{(2)} E_k(\mathbf{r}_0, 2\Omega) E_l^*(\mathbf{r}_0, \Omega)] + \frac{4\pi}{3} k^2(\Omega) a^3 G_{ij}(\mathbf{r}_1, \mathbf{r}_2; \Omega) \eta_{jk}^{(1)} E_k(\mathbf{r}_2, \Omega), \quad (\text{C9})
\end{aligned}$$

$$\begin{aligned}
E_i(\mathbf{r}_1, 2\Omega) = & \frac{4\pi}{3} k^2(2\Omega) a^3 G_R(2\Omega) \eta_{ij}^{(1)} E_j(\mathbf{r}_1, 2\Omega) + \frac{4\pi}{3} k^2(2\Omega) a^3 G_{ij}(\mathbf{r}_1, \mathbf{r}_0; 2\Omega) [\hat{\eta}_{jk}^{(1)} E_k(\mathbf{r}_0, 2\Omega) + \eta_{jkl}^{(2)} E_k(\mathbf{r}_0, \Omega) E_l(\mathbf{r}_0, \Omega)] \\
& + \frac{4\pi}{3} k^2(2\Omega) a^3 G_{ij}(\mathbf{r}_1, \mathbf{r}_2; 2\Omega) \eta_{jk}^{(1)} E_k(\mathbf{r}_2, 2\Omega), \quad (\text{C10})
\end{aligned}$$

$$\begin{aligned}
E_i(\mathbf{r}_2, \Omega) = & E_{\text{inc},i}(\mathbf{r}_2, \Omega) + \frac{4\pi}{3} k^2(\Omega) a^3 G_R(\Omega) \eta_{ij}^{(1)} E_j(\mathbf{r}_2, \Omega) + \frac{4\pi}{3} k^2(\Omega) a^3 G_{ij}(\mathbf{r}_2, \mathbf{r}_0; \Omega) [\hat{\eta}_{jk}^{(1)} E_k(\mathbf{r}_0, \Omega) \\
& + 2\eta_{jkl}^{(2)} E_k(\mathbf{r}_0, 2\Omega) E_l^*(\mathbf{r}_0, \Omega)] + \frac{4\pi}{3} k^2(\Omega) a^3 G_{ij}(\mathbf{r}_2, \mathbf{r}_1; \Omega) \eta_{jk}^{(1)} E_k(\mathbf{r}_1, \Omega), \quad (\text{C11})
\end{aligned}$$

$$\begin{aligned}
E_i(\mathbf{r}_2, 2\Omega) = & \frac{4\pi}{3} k^2(2\Omega) a^3 G_R(2\Omega) \eta_{ij}^{(1)} E_j(\mathbf{r}_2, 2\Omega) + \frac{4\pi}{3} k^2(2\Omega) a^3 G_{ij}(\mathbf{r}_2, \mathbf{r}_0; 2\Omega) [\hat{\eta}_{jk}^{(1)} E_k(\mathbf{r}_0, 2\Omega) + \eta_{jkl}^{(2)} E_k(\mathbf{r}_0, \Omega) E_l(\mathbf{r}_0, \Omega)] \\
& + \frac{4\pi}{3} k^2(2\Omega) a^3 G_{ij}(\mathbf{r}_2, \mathbf{r}_1; 2\Omega) \eta_{jk}^{(1)} E_k(\mathbf{r}_1, 2\Omega). \quad (\text{C12})
\end{aligned}$$

Following the procedure indicated in Appendix B, the above equations can be solved perturbatively for the local fields.

2. Third-harmonic generation

As above, the sample and the tip are small balls of radius a centered at \mathbf{r}_0 , \mathbf{r}_1 , and \mathbf{r}_2 . The susceptibilities are $\chi_{ij}^{(1)}(\mathbf{r}; \omega) = \hat{\eta}_{ij}^{(1)}$ for $|\mathbf{r} - \mathbf{r}_0| \leq a$, $\chi_{ij}^{(1)}(\mathbf{r}; \omega) = \eta_{ij}^{(1)}$ for $|\mathbf{r} - \mathbf{r}_1| \leq a$ and $|\mathbf{r} - \mathbf{r}_2| \leq a$, and $\chi_{ijkl}^{(3)}(\mathbf{r}; \omega) = \eta_{ijkl}^{(3)}$ for $|\mathbf{r}| \leq a$. We begin with the general

cubic-nonlinear wave equations which are correct to order ϵ :

$$\nabla \times \nabla \times \mathbf{E}(\mathbf{r}, \Omega) - k^2(\Omega)\mathbf{E}(\mathbf{r}, \Omega) = 4\pi k^2(\Omega)[\chi_{ij}^{(1)}(\mathbf{r}, \Omega)E_j(\mathbf{r}, \Omega) + 3\chi_{ijkl}^{(3)}(\mathbf{r}, \Omega, \Omega, -\Omega)E_j(\mathbf{r}, \Omega)E_k(\mathbf{r}, \Omega)E_l^*(\mathbf{r}, \Omega)], \quad (\text{C13})$$

$$\nabla \times \nabla \times \mathbf{E}(\mathbf{r}, 3\Omega) - k^2(3\Omega)\mathbf{E}(\mathbf{r}, 3\Omega) = 4\pi k^2(3\Omega)[\chi_{ij}^{(1)}(\mathbf{r}, 3\Omega)E_j(\mathbf{r}, 3\Omega) + \chi_{ijkl}^{(3)}(\mathbf{r}, \Omega, \Omega, \Omega)E_j(\mathbf{r}, \Omega)E_k(\mathbf{r}, \Omega)E_l(\mathbf{r}, \Omega)]. \quad (\text{C14})$$

It follows immediately from (28) that the solution to (C13) and (C14) is given by

$$\begin{aligned} E_i(\mathbf{r}, \Omega) &= E_{\text{inc},i}(\mathbf{r}, \Omega) + k^2(\Omega) \int d^3 r' \chi_{jk}^{(1)}(\mathbf{r}', \Omega) G_{ij}(\mathbf{r}, \mathbf{r}'; \Omega) E_k(\mathbf{r}', \Omega) \\ &\quad + 3k^2(\Omega) \int d^3 r' \chi_{jklm}^{(3)}(\mathbf{r}', \Omega, \Omega, -\Omega) G_{ij}(\mathbf{r}, \mathbf{r}'; \Omega) E_k(\mathbf{r}', \Omega) E_l(\mathbf{r}', \Omega) E_m^*(\mathbf{r}', \Omega), \end{aligned} \quad (\text{C15})$$

$$\begin{aligned} E_i(\mathbf{r}, 3\Omega) &= k^2(3\Omega) \int d^3 r' \chi_{jk}^{(1)}(\mathbf{r}', 3\Omega) G_{ij}(\mathbf{r}, \mathbf{r}'; 3\Omega) E_k(\mathbf{r}', 3\Omega) \\ &\quad + 3k^2(3\Omega) \int d^3 r' \chi_{jklm}^{(3)}(\mathbf{r}', \Omega, \Omega, \Omega) G_{ij}(\mathbf{r}, \mathbf{r}'; 3\Omega) E_k(\mathbf{r}', \Omega) E_l(\mathbf{r}', \Omega) E_m(\mathbf{r}', \Omega). \end{aligned} \quad (\text{C16})$$

For the specific setup described at the beginning of this section, (C15) and (C16) become

$$\begin{aligned} E_i(\mathbf{r}, \Omega) &= E_{\text{inc},i}(\mathbf{r}, \Omega) + k^2(\Omega) \hat{\eta}_{jk}^{(1)} \int_{|\mathbf{r}'| \leq a} d^3 r' G_{ij}(\mathbf{r}, \mathbf{r}'; \Omega) E_k(\mathbf{r}', \Omega) + k^2(\Omega) \eta_{jk}^{(1)} \int_{|\mathbf{r}' - \mathbf{r}_1| \leq a} d^3 r' G_{ij}(\mathbf{r}, \mathbf{r}'; \Omega) E_k(\mathbf{r}', \Omega) \\ &\quad + k^2(\Omega) \eta_{jk}^{(1)} \int_{|\mathbf{r}' - \mathbf{r}_2| \leq a} d^3 r' G_{ij}(\mathbf{r}, \mathbf{r}'; \Omega) E_k(\mathbf{r}', \Omega) + 3k^2(\Omega) \eta_{jklm}^{(3)} \int_{|\mathbf{r}'| \leq a} d^3 r' G_{ij}(\mathbf{r}, \mathbf{r}'; \Omega) E_k(\mathbf{r}', \Omega) E_l(\mathbf{r}', \Omega) E_m^*(\mathbf{r}', \Omega), \end{aligned} \quad (\text{C17})$$

$$\begin{aligned} E_i(\mathbf{r}, 3\Omega) &= k^2(3\Omega) \hat{\eta}_{jk}^{(1)} \int_{|\mathbf{r}'| \leq a} d^3 r' G_{ij}(\mathbf{r}, \mathbf{r}'; 3\Omega) E_k(\mathbf{r}', 3\Omega) + k^2(3\Omega) \eta_{jk}^{(1)} \int_{|\mathbf{r}' - \mathbf{r}_1| \leq a} d^3 r' G_{ij}(\mathbf{r}, \mathbf{r}'; 3\Omega) E_k(\mathbf{r}', 3\Omega) \\ &\quad + k^2(3\Omega) \eta_{jk}^{(1)} \int_{|\mathbf{r}' - \mathbf{r}_2| \leq a} d^3 r' G_{ij}(\mathbf{r}, \mathbf{r}'; 3\Omega) E_k(\mathbf{r}', 3\Omega) \\ &\quad + k^2(3\Omega) \eta_{jklm}^{(3)} \int_{|\mathbf{r}'| \leq a} d^3 r' G_{ij}(\mathbf{r}, \mathbf{r}'; 3\Omega) E_k(\mathbf{r}', \Omega) E_l(\mathbf{r}', \Omega) E_m(\mathbf{r}', \Omega). \end{aligned} \quad (\text{C18})$$

Using the asymptotic form of the Green's function given in Eq. (29), we find that the scattered field is of the form

$$E_i^s(\mathbf{r}, \Omega) = A_i(\mathbf{r}, \Omega) \frac{e^{ik(\Omega)r}}{r}, \quad (\text{C19})$$

$$E_i^s(\mathbf{r}, 3\Omega) = A_i(\mathbf{r}, 3\Omega) \frac{e^{ik(3\Omega)r}}{r}, \quad (\text{C20})$$

where the scattering amplitude is defined by

$$\begin{aligned} A_i(\mathbf{r}, \Omega) &= \frac{4\pi}{3} a^3 (\delta_{ij} - \hat{r}_i \hat{r}_j) k^2(\Omega) [\hat{\eta}_{jk}^{(1)} E_k(\mathbf{r}_0, \Omega) + 3\eta_{jklm}^{(3)} E_k(\mathbf{r}_0, \Omega) E_l(\mathbf{r}_0, \Omega) E_m^*(\mathbf{r}_0, \Omega)] \\ &\quad + \frac{4\pi}{3} a^3 (\delta_{ij} - \hat{r}_i \hat{r}_j) k^2(\Omega) \eta_{jk}^{(1)} E_k(\mathbf{r}_1, \Omega) e^{ik(\Omega)\hat{\mathbf{r}} \cdot \mathbf{r}_1} + \frac{4\pi}{3} a^3 (\delta_{ij} - \hat{r}_i \hat{r}_j) k^2(\Omega) \eta_{jk}^{(1)} E_k(\mathbf{r}_2, \Omega) e^{ik(\Omega)\hat{\mathbf{r}} \cdot \mathbf{r}_2}, \end{aligned} \quad (\text{C21})$$

$$\begin{aligned} A_i(\mathbf{r}, 3\Omega) &= \frac{4\pi}{3} a^3 (\delta_{ij} - \hat{r}_i \hat{r}_j) k^2(3\Omega) [\hat{\eta}_{jk}^{(1)} E_k(\mathbf{r}_0, 3\Omega) + \eta_{jklm}^{(3)} E_k(\mathbf{r}_0, \Omega) E_l(\mathbf{r}_0, \Omega) E_m(\mathbf{r}_0, \Omega)] \\ &\quad + \frac{4\pi}{3} a^3 (\delta_{ij} - \hat{r}_i \hat{r}_j) k^2(3\Omega) \eta_{jk}^{(1)} E_k(\mathbf{r}_1, 3\Omega) e^{ik(3\Omega)\hat{\mathbf{r}} \cdot \mathbf{r}_1} + \frac{4\pi}{3} a^3 (\delta_{ij} - \hat{r}_i \hat{r}_j) k^2(3\Omega) \eta_{jk}^{(1)} E_k(\mathbf{r}_2, 3\Omega) e^{ik(3\Omega)\hat{\mathbf{r}} \cdot \mathbf{r}_2}. \end{aligned} \quad (\text{C22})$$

Setting $\mathbf{r} = \mathbf{r}_0$, $\mathbf{r} = \mathbf{r}_1$, and $\mathbf{r} = \mathbf{r}_2$ in Eqs. (C18) and (C18), and carrying out the indicated integrations we find that

$$\begin{aligned} E_i(\mathbf{r}_0, \Omega) &= E_{\text{inc},i}(\mathbf{r}_0, \Omega) + \frac{4\pi}{3} a^3 k^2(\Omega) \hat{\eta}_{ij}^{(1)} G_R(\Omega) E_j(\mathbf{r}_0, \Omega) + \frac{4\pi}{3} a^3 k^2(\Omega) \eta_{jk}^{(1)} G_{ij}(\mathbf{r}_0, \mathbf{r}_1; \Omega) E_k(\mathbf{r}_1, \Omega) \\ &\quad + \frac{4\pi}{3} a^3 k^2(\Omega) \eta_{jk}^{(1)} G_{ij}(\mathbf{r}_0, \mathbf{r}_2; \Omega) E_k(\mathbf{r}_2, \Omega) + \frac{4\pi}{3} a^3 k^2(\Omega) 3\eta_{ijkl}^{(3)} G_R(\Omega) E_j(\mathbf{r}_0, \Omega) E_k(\mathbf{r}_0, \Omega) E_l^*(\mathbf{r}_0, \Omega), \end{aligned} \quad (\text{C23})$$

$$\begin{aligned} E_i(\mathbf{r}_1, \Omega) &= E_{\text{inc},i}(\mathbf{r}_1, \Omega) + \frac{4\pi}{3} a^3 k^2(\Omega) \hat{\eta}_{ij}^{(1)} G_{ij}(\mathbf{r}_1, \mathbf{r}_0; \Omega) E_k(\mathbf{r}_0, \Omega) + \frac{4\pi}{3} a^3 k^2(\Omega) \eta_{ij}^{(1)} G_R(\mathbf{r}, \mathbf{r}_1; \Omega) E_j(\mathbf{r}', \Omega) \\ &\quad + \frac{4\pi}{3} a^3 k^2(\Omega) \eta_{jk}^{(1)} G_{ij}(\mathbf{r}_1, \mathbf{r}_2; \Omega) E_k(\mathbf{r}_2, \Omega) + \frac{4\pi}{3} a^3 k^2(\Omega) 3\eta_{jklm}^{(3)} G_{ij}(\mathbf{r}_1, \mathbf{r}_0; \Omega) E_k(\mathbf{r}_0, \Omega) E_l(\mathbf{r}_0, \Omega) E_m^*(\mathbf{r}_0, \Omega), \end{aligned} \quad (\text{C24})$$

$$E_i(\mathbf{r}_2, \Omega) = E_{\text{inc},i}(\mathbf{r}_2, \Omega) + \frac{4\pi}{3} a^3 k^2(\Omega) \hat{\eta}_{jk}^{(1)} G_{ij}(\mathbf{r}_2, \mathbf{r}_0; \Omega) E_k(\mathbf{r}_0, \Omega) + \frac{4\pi}{3} a^3 k^2(\Omega) \eta_{jk}^{(1)} G_{ij}(\mathbf{r}_2, \mathbf{r}_1; \Omega) E_k(\mathbf{r}_1, \Omega) \\ + \frac{4\pi}{3} a^3 k^2(\Omega) \eta_{ij}^{(1)} G_R(\Omega) E_j(\mathbf{r}_2, \Omega) + \frac{4\pi}{3} a^3 k^2(\Omega) 3\eta_{jklm}^{(3)} G_{ij}(\mathbf{r}_2, \mathbf{r}_0; \Omega) E_k(\mathbf{r}_0, \Omega) E_l(\mathbf{r}_0, \Omega) E_m^*(\mathbf{r}_0, \Omega), \quad (\text{C25})$$

$$E_i(\mathbf{r}_0, 3\Omega) = \frac{4\pi}{3} a^3 k^2(3\Omega) \hat{\eta}_{ij}^{(1)} G_R(3\Omega) E_j(\mathbf{r}_0, 3\Omega) + \frac{4\pi}{3} a^3 k^2(3\Omega) \eta_{jk}^{(1)} G_{ij}(\mathbf{r}_0, \mathbf{r}_1; 3\Omega) E_k(\mathbf{r}_1, 3\Omega) \\ + \frac{4\pi}{3} a^3 k^2(3\Omega) \eta_{jk}^{(1)} G_{ij}(\mathbf{r}_0, \mathbf{r}_2; 3\Omega) E_k(\mathbf{r}_2, 3\Omega) + \frac{4\pi}{3} a^3 k^2(3\Omega) \eta_{jklm}^{(3)} G_R(3\Omega) E_k(\mathbf{r}_0, \Omega) E_l(\mathbf{r}_0, \Omega) E_m(\mathbf{r}_0, \Omega), \quad (\text{C26})$$

$$E_i(\mathbf{r}_1, 3\Omega) = \frac{4\pi}{3} a^3 k^2(3\Omega) \hat{\eta}_{jk}^{(1)} G_{ij}(\mathbf{r}_1, \mathbf{r}_0; 3\Omega) E_k(\mathbf{r}_0, 3\Omega) + \frac{4\pi}{3} a^3 k^2(3\Omega) \eta_{ij}^{(1)} G_R(3\Omega) E_j(\mathbf{r}_1, 3\Omega) \\ + \frac{4\pi}{3} a^3 k^2(3\Omega) \eta_{jk}^{(1)} G_{ij}(\mathbf{r}_1, \mathbf{r}_2; 3\Omega) E_k(\mathbf{r}_2, 3\Omega) + \frac{4\pi}{3} a^3 k^2(3\Omega) \eta_{jklm}^{(3)} G_{ij}(\mathbf{r}_1, \mathbf{r}_0; 3\Omega) E_k(\mathbf{r}_0, \Omega) E_l(\mathbf{r}_0, \Omega) E_m(\mathbf{r}_0, \Omega), \quad (\text{C27})$$

$$E_i(\mathbf{r}_2, 3\Omega) = \frac{4\pi}{3} a^3 k^2(3\Omega) \hat{\eta}_{jk}^{(1)} G_{ij}(\mathbf{r}_2, \mathbf{r}_0; 3\Omega) E_k(\mathbf{r}_0, 3\Omega) + \frac{4\pi}{3} a^3 k^2(3\Omega) \eta_{jk}^{(1)} G_{ij}(\mathbf{r}_2, \mathbf{r}_1; 3\Omega) E_k(\mathbf{r}_1, 3\Omega) \\ + \frac{4\pi}{3} a^3 k^2(3\Omega) \eta_{ij}^{(1)} G_R(3\Omega) E_k(\mathbf{r}_2, 3\Omega) + \frac{4\pi}{3} a^3 k^2(3\Omega) \eta_{jklm}^{(3)} G_{ij}(\mathbf{r}_2, \mathbf{r}_0; 3\Omega) E_k(\mathbf{r}_0, \Omega) E_l(\mathbf{r}_0, \Omega) E_m(\mathbf{r}_0, \Omega). \quad (\text{C28})$$

Following the procedure indicated in Appendix B, the above equations can be solved perturbatively for the local fields.

-
- [1] R. G. Newton, *Scattering Theory of Waves and Particles*, 2nd ed. (Springer, New York, 1982).
- [2] H. C. van de Hulst, *Physica (Amsterdam)* **15**, 740 (1949).
- [3] D. S. Jones, *Philos. Mag.* **46**, 957 (1955).
- [4] M. Born and E. Wolf, *Principles of Optics*, 7th ed. (Cambridge University Press, Cambridge, UK, 1999).
- [5] P. S. Carney, J. C. Schotland, and E. Wolf, *Phys. Rev. E* **70**, 036611 (2004).
- [6] D. R. Lytle, P. S. Carney, J. C. Schotland, and E. Wolf, *Phys. Rev. E* **71**, 056610 (2005).
- [7] Y. R. Shen, *Principles of Nonlinear Optics* (Wiley-Interscience, New York, 1984).
- [8] R. W. Boyd, *Nonlinear Optics*, 3rd ed. (Academic, New York 2008).
- [9] C. A. Dailey, B. J. Burke, and G. J. Simpson, *Chem. Phys. Lett.* **390**, 8 (2004).
- [10] M. Xu and S. Jiang, *J. Phys.: Condensed Matter* **18**, 8987 (2006).
- [11] N. Tsutsumi, T. Mizutani, W. Sakai, T. Watanabe, and S. Miyata, *J. Chem. Phys.* **108**, 9839 (1998).
- [12] D. P. Shelton and Z. Lu, *Phys. Rev. A* **37**, 2231 (1988).
- [13] S. Singh, W. A. Bonner, and L. G. van Uitert, *Phys. Lett. A* **38**, 407 (1972).
- [14] D. S. Chemla and J. Jerphagnon, *Appl. Phys. Lett.* **20**, 222 (1972).
- [15] C. Tai, *Dyadic Green's Functions in Electromagnetic Theory* (IEEE, New York, 1994).
- [16] J. M. Vigoureux, C. Girard, and F. Depasse, *J. Mod. Opt.* **41**, 49 (1994).
- [17] S. Takahashi and A. V. Zayats, *Appl. Phys. Lett.* **80**, 3479 (2002).
- [18] A. V. Zayats and V. Sandoghdar, *Opt. Commun.* **178**, 245 (2000).
- [19] A. V. Zayats and V. Sandoghdar, *J. Microsc.* **202**, 94 (2001).
- [20] H. Harutyunyan, S. Palomba, J. Renger, R. Quidant, and L. Novotny, *Nano Lett.* **10**, 5076 (2010).
- [21] S. Palomba, M. Danckwerts, and L. Novotny, *J. Opt. A: Pure Appl. Opt.* **11**, 114030 (2009).
- [22] S. Palomba and L. Novotny, *Nano Lett.* **9**, 3801 (2009).
- [23] L. Novotny and B. Hecht, *Principles of Nano-Optics* (Cambridge University Press, Cambridge, UK, 2012).
- [24] F. Keilmann and R. Hillenbrand, *Philos. Trans. R. Soc., A* **362**, 787 (2004).
- [25] A. Lewis and K. Lieberman, *Nature (London)* **354**, 214 (1991).
- [26] J. Sun, P. S. Carney, and J. C. Schotland, *J. Appl. Phys.* **102**, 103103 (2007).