

Errata

Erratum: Experimental evidence of beam-foil convoy electrons being produced by an electron transfer to the continuum mechanism [Phys. Rev. A 28, 706 (1983)]

P. Focke, W. Meckbach, C. R. Garibotti, and I. B. Nemirovsky

Equation (9) instead of being

$$\frac{d}{dv} = \frac{1}{v} [\dots],$$

should read

$$\frac{d}{dv} = \frac{1}{v'} [\dots].$$

Erratum: Landau theory of cholesteric blue phases [Phys. Rev. A 28, 1114 (1983)]

H. Grebel, R. M. Hornreich, and S. Shtrikman

Equation (15b) should read

$$\eta_C = 1 - 4 \tan \theta / (\sqrt{3} + \tan \theta)$$

Erratum: Theory of light scattering in cholesteric blue phases [Phys. Rev. A 28, 1791 (1983)]

R. M. Hornreich and S. Shtrikman

Following Eq. (14b) the text should read as follows: with the equality holding only for the 100% polarized case.

In Eq. (25) the lower right-hand matrix element should be $-\frac{4}{3}\epsilon_0^2 + 4(\epsilon_2^2 + \epsilon_{-2}^2)$ rather than $-\frac{4}{3}\epsilon_0^2$.

Before Eq. (26c) the text should read as follows: . . . reversing the algebraic signs of elements $\tilde{\mu}_{ij}$ having either i or $j = 2$ or 3 ($\tilde{\mu}_{12}, \tilde{\mu}_{13}, \tilde{\mu}_{21}, \tilde{\mu}_{24}, \tilde{\mu}_{31}, \tilde{\mu}_{34}, \tilde{\mu}_{42}, \tilde{\mu}_{43}$).

In Eq. (26c) change all signs \pm to \mp and, following this equation, change ϵ_2 to ϵ_{-2} .

In the line preceding Eq. (40) and also in this equation, change ϵ_2 to ϵ_{-2} .

In the last line of Eq. (44c), change S_{21} to S_{20} .

Figure 1 in this paper was drawn incorrectly. The corrected version is shown here.

We are grateful to Professor P. P. Crooker for calling several of these errors to our attention.

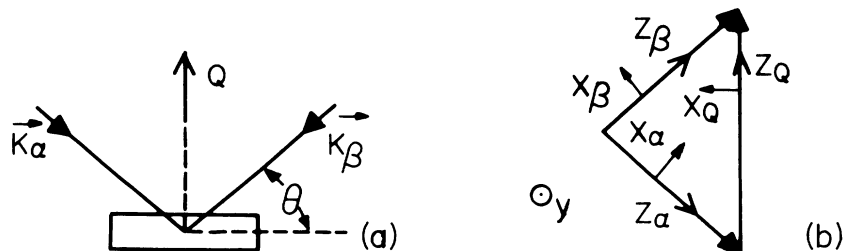


FIG. 1. (a) Schematic view of the scattering plane, showing the wave vectors characterizing the incident (\vec{k}_α) and scattered (\vec{k}_β) light beams and the scattering wave vector \vec{Q} . (b) The local coordinate systems associated, respectively, with each of the three wave vectors.