

Generating target graph couplings for the quantum approximate optimization algorithm from native quantum hardware couplings

Joel Rajakumar^{1,*}, Jai Moondra,² Bryan Gard,¹ Swati Gupta^{1,2} and Creston D. Herold^{1,†}

¹Georgia Tech Research Institute, Atlanta, Georgia 30332, USA

²Georgia Institute of Technology, Atlanta, Georgia 30332, USA



(Received 13 May 2022; accepted 21 July 2022; published 5 August 2022)

We present methods for constructing any target coupling graph using limited global controls in an Ising-like quantum spin system. Our approach is motivated by implementing the quantum approximate optimization algorithm (QAOA) on trapped-ion quantum hardware to find approximate solutions to MaxCut. We present a mathematical description of the problem and provide approximately optimal algorithmic constructions that generate arbitrary unweighted coupling graphs with n nodes in $O(n)$ global entangling operations and weighted graphs with m edges in $O(m)$ operations. These upper bounds are not tight in general, and we formulate a mixed-integer program to solve the graph coupling problem to optimality. We perform numeric experiments on small graphs with $n \leq 8$ and show that optimal sequences, which use fewer operations, can be found using mixed-integer programs. Noisy simulations of MaxCut QAOA show that our implementation is less susceptible to noise than the standard gate-based compilation.

DOI: [10.1103/PhysRevA.106.022606](https://doi.org/10.1103/PhysRevA.106.022606)

I. INTRODUCTION

While the capabilities of quantum computing hardware continue to increase both in qubit number and quality of operations, the field is still a long way from quantum error correction. Numerous near-term applications for the so-called NISQ hardware have been proposed including quantum chemistry, the variational quantum eigensolver, and optimization [1]. Important experimental demonstrations of these applications have been performed, but to date the hardware has been too small to be computationally useful compared to classical methods [2–4]. Quantum hardware naturally performs better on problems which match the native qubit connectivity, while general problems tend to require significant compilation, resulting in increased gate count and worse performance [5].

A prominent example of an optimization problem is MaxCut, which asks to partition the vertices of a given weighted graph $G = (V, E, z)$, with edge weights z , into two sets $S, V \setminus S$ so that the total weight of the edges in the cut $(S, V - S)$ is maximized. To solve MaxCut with the quantum approximate optimization algorithm (QAOA) [6–8], each vertex is represented by a qubit, and the Z eigenstates label the two sets. The cut size is encoded as the energy of a cost Hamiltonian, consisting of a sum over two-qubit operators for each edge in E , where the MaxCut corresponds to the lowest energy eigenvector. MaxCut QAOA was recently demonstrated on tens of ions [9]; however, the problem graph matched the native hardware coupling graph. To implement MaxCut for an any

graph, an arbitrary qubit coupling graph (cost Hamiltonian) must be produced.

In this paper we show how arbitrary coupling operations can be constructed on a quantum spin system using a limited set of operations. While we specialize to a trapped-ion system, our method is general and is applicable to other quantum systems with natural long-range interactions, such as NMR manipulation of multispin molecules [10], arrays of Rydberg atoms [11–13], or certain superconducting qubits coupled to a common bus resonator [14,15]. While our results have immediate application to efficient implementation of MaxCut QAOA on crystals of trapped ions, they may also enable new classes of quantum simulations.

In Sec. II we provide a physical definition of a coupling graph as well as implementation details for trapped ion systems. In Sec. III we physically motivate the problem and then give a problem statement in purely mathematical terms. In Sec. IV we discuss various solution methods, including (i) a lower bound of $\Omega(\log n)$ [16] on the graph coupling number, i.e., smallest possible number of Ising operations required to construct a general graph with n nodes, (ii) an $O(n)$ operation sequence for the construction of unweighted graphs which we refer to as *union of stars*, and (iii) an $O(m)$ operation for constructing arbitrary weighted graphs with m edges.

Preliminary numerical experiments using a mixed-integer program (MIP) are presented in Sec. V A which validate the performance of our constructions and show that optimal sequences can be found which use fewer Ising operations than the upper bounds from the constructions. This MIP can be used to find optimal sequences for small instances (up to the scale of the NISQ hardware in the near future), but for large graphs this approach quickly becomes intractable, and instead, the union-of-stars construction can be used to find a provable near-optimal solution. Numerical simulations of

*Present address: University of Maryland, College Park, MD 20742, USA.

†Creston.Herold@gtri.gatech.edu

MaxCut QAOA including noise follow in Sec. VB. Finally, an estimate of hardware execution time is given in Sec. VC.

II. COUPLING OPERATORS AND PHYSICAL CONTROLS

Many quantum systems exhibit intrinsic couplings between qubits. Physically, these spin-spin couplings comprise the zero-field Ising model with a coupling Hamiltonian,

$$H_{\text{Ising}} = \sum_{i=1}^{n-1} \sum_{j=i+1}^n J_{i,j} \sigma_i^z \sigma_j^z, \quad (1)$$

where σ_j^z denotes the Pauli-Z matrix acting on the j th ion [17]. The term $\sigma_i^z \sigma_j^z$ is a “ZZ coupling” between qubits i and j , and the values of the interaction energies $J_{i,j}$ depend on the details of the underlying quantum hardware.

Definition 1 (Coupling graph). We define a coupling graph $G(V, E)$, $|V| = n$ as a mathematical abstraction of a coupling operation on an n -qubit system, where each vertex $v \in V$ represents a qubit and each edge $e \in E$ represents the strength of the ZZ coupling between two qubits.

With this definition, an arbitrary coupling operator

$$C = \sum_{i=1}^{n-1} \sum_{j=i+1}^n a_{i,j} \sigma_i^z \sigma_j^z \quad (2)$$

has a coupling graph with adjacency matrix A of entries $a_{i,j} = a_{j,i}$, where $a_{i,j} \in \mathbb{R}$. H_{Ising} is a particular physical coupling operator [compare to Eq. (2)], and the adjacency matrix of the corresponding coupling graph has elements $a_{i,j} = J_{i,j}$.

In Sec. III we show that a coupling operator C with any arbitrary adjacency matrix can be constructed from two simple operations: (A) a global coupling operation, H_{Ising} , native to the quantum hardware, and (B) individual qubit bit flips. Here, we specialize to collections of ions trapped in a common potential and describe how each of these operations is realized.

A. H_{Ising} Implementation

For trapped ion crystals, a wide variety of coupling graphs, facilitated by the collective normal modes of motion of the ions, are possible. One method for generating H_{Ising} is the Mølmer-Sørensen (MS) interaction [18]. With one-dimensional ion crystals, the MS interaction has been used extensively for quantum simulations of interacting spins [19,20] as well as lattice gauge models [21]. For experiments to date with two-dimensional ion crystals, an optical dipole force (ODF) was used to produce H_{Ising} [22,23]. While the exact dependence of the interaction strength on the optical fields is different, the dependence of $J_{i,j}$ on the motional mode structure is identical.

The MS interaction is created by illuminating the ions with a pair of lasers tuned near red and blue motional sidebands, and the $J_{i,j}$ in Eq. (1) are

$$J_{i,j} = \Omega_i \Omega_j \frac{\hbar^2 (\Delta k)^2}{2M} \sum_m \frac{b_{i,m} b_{j,m}}{\mu^2 - \omega_m^2}, \quad (3)$$

where M is the single-ion mass, Δk is the momentum imparted by the laser interaction, \hbar is the reduced Planck

constant, and Ω_j is the Rabi rate for the j th ion, which depends on atomic matrix elements and the optical intensity at the ion [24]. Within the sum over motional modes m , the normal mode frequencies have angular frequency ω_m , and the $b_{i,m}$ are the displacement amplitudes for ion i in mode m (see, e.g., [25]); μ is the angular frequency of the laser with respect to the qubit frequency. The natural basis for the MS interaction can be taken to be $\sigma_i^x \sigma_j^x$; however, it can be transformed to $\sigma_i^z \sigma_j^z$ through global rotations with the same pair of laser beams [26,27].

We define the MS detuning as the difference between the laser detuning and the m th normal mode, i.e.,

$$\delta_m = \mu - \omega_m. \quad (4)$$

While a wide variety of $J_{i,j}$ are possible through variation of the laser intensities, the MS detuning, and the motional modes [28], here we focus on two specific cases. The $m = 0$ mode is the center-of-mass mode for which all the $b_{j,0}$ are equal. If the MS interaction is detuned very close to this mode such that $|\delta_0| \ll \delta_m \forall m \neq 0$, the $m = 0$ term in the sum in Eq. (3) dominates, and we have

$$J_{i,j} = \text{sgn}(\delta_0) J_0, \quad (5)$$

for positive constant J_0 . In the language of spin models of magnetism, this produces an infinite range ferromagnetic or antiferromagnetic interaction depending on the sign of the detuning [24]. In particular, we show in Sec. IV A that this equal, all-to-all interaction permits efficient generation of dense, unweighted coupling graphs.

B. Bit-flip implementation

One-qubit operations can be envisioned as rotations of a qubit vector on the Bloch sphere. The unitary $R_j^x(\theta) = \exp\{-i(\theta/2)\sigma_j^x\}$ is a rotation through an angle θ about the x axis. We define a bit flip on the j th qubit as

$$X_j = R_j^x(\pi) = -i\sigma_j^x. \quad (6)$$

X_j will flip the state of a qubit in the z or y basis. We assume that these bit flips can be applied to an individual ion within the ion crystal, which is accomplished through tightly focused control beams. Such rotations can be performed sequentially or in parallel on many ions since they do not change the motional state of the crystal.

III. PROBLEM STATEMENT

Arbitrary coupling graphs can be composed from the hardware-native H_{Ising} global interaction and single-qubit bit flips introduced in Sec. II. Following a physical motivation, we give a precise mathematical description of this construction problem which does not require any background physical knowledge.

A. Physical description

Motivated by solving MaxCut with QAOA [6], we want to find a set of physical operations which efficiently implements the cost Hamiltonian for a particular target graph. The cost Hamiltonian is exactly the coupling operation defined in Eq. (2) apart from overall constants. This is similar to any

quantum operation compilation problem, where a desired unitary is constructed from a limited set of physical operations. We can succinctly describe the physical problem:

Problem Statement 1 (Physical). Find an “operation sequence,” composed by interleaving H_{Ising} interactions and single-qubit bit flips X_j , that produces a desired coupling operation. To mitigate operation error, a short sequence is desired; we will optimize for a minimum number of H_{Ising} applications or the minimum total strength of H_{Ising} operations.

The intuition behind this limited set of controls is as follows. By surrounding a ZZ term with bit flips, the sign of that term in H_{Ising} can be reversed:

$$X_j^\dagger \sigma_i^z \sigma_j^z X_j = -\sigma_i^z \sigma_j^z. \quad (7)$$

However, $X_j^\dagger H_{\text{Ising}} X_j$ will change the sign of all ZZ terms acting on ion j . Repeated applications of H_{Ising} surrounded by carefully chosen sequences of bit flips were previously used to isolate individual two-qubit interactions within molecules in NMR quantum computing [29]. Similar controls were also proposed to generate four-body spin interactions [30].

We represent these bit-flip operations with a $\{\pm 1\}^{k \times n}$ matrix P , where k is the number of H_{Ising} applications, and there is a column for each qubit. The sign of each entry in a row encodes the bit flips surrounding that application of H_{Ising} , i.e., $P_{p,i} = -1$ if the i th qubit is flipped in the p th application of H_{Ising} and is equal to 1 otherwise. The coupling for the p th application of H_{Ising} with strength w_p can then be written as

$$C^{(p)} = \sum_{i=1}^{n-1} \sum_{j=i+1}^n c_{p,i,j} \sigma_i^z \sigma_j^z, \quad (8)$$

$$\text{where } c_{p,i,j} = w_p J_{i,j} P_{p,i} P_{p,j}.$$

This can be verified by considering the four possible bit flips for the i, j term:

$$w_p J_{i,j} \sigma_i^z \sigma_j^z, \quad P_{p,i} = P_{p,j} = 1, \quad (9a)$$

$$X_j^\dagger (w_p J_{i,j} \sigma_i^z \sigma_j^z) X_j = -w_p J_{i,j} \sigma_i^z \sigma_j^z, \\ P_{p,i} = 1, P_{p,j} = -1, \quad (9b)$$

$$X_i^\dagger (w_p J_{i,j} \sigma_i^z \sigma_j^z) X_i = -w_p J_{i,j} \sigma_i^z \sigma_j^z, \\ P_{p,i} = -1, P_{p,j} = 1, \quad (9c)$$

$$X_j^\dagger X_i^\dagger (w_p J_{i,j} \sigma_i^z \sigma_j^z) X_i X_j = w_p J_{i,j} \sigma_i^z \sigma_j^z, \\ P_{p,i} = P_{p,j} = -1. \quad (9d)$$

The net coupling of a series of k applications of H_{Ising} is given by the sum of their couplings:

$$C = \sum_{p=1}^k C^{(p)} = \sum_{i=1}^{n-1} \sum_{j=i+1}^n \left(\sum_{p=1}^k c_{p,i,j} \right) \sigma_i^z \sigma_j^z. \quad (10)$$

By comparison with Eq. (2), we identify that the term in parenthesis is an element of the total coupling adjacency matrix, which can therefore be expressed as

$$A = P^T W P \odot J, \quad (11)$$

where W is a diagonal $k \times k$ matrix of Ising interaction strengths with $W_{p,p} = w_p$, \odot represents element wise matrix multiplication, and $P \in \{1, -1\}^{k \times n}$.

Both positive and negative strengths w_p are possible. For $J_{i,j} = +|J_0|$, we can choose the strength of H_{Ising} by changing the intensity of the lasers creating the MS interaction; however, this only permits $w_p > 0$. To achieve an effective $w_p < 0$, the MS interaction detuning can be negated for $J_{i,j} = -|J_0|$ through Eq. (5). In Appendix A we give an example of an operation sequence which creates a particular three-qubit coupling graph.

An optimal operation sequence is one which produces the desired coupling graph for the target problem with the least total error. It is expected that the infidelity of H_{Ising} will be much larger than for the X_j bit flips. We propose two optimization criteria: (i) minimizing the total number of H_{Ising} applications, and (ii) minimizing the total absolute strength of the H_{Ising} operations. The first accounts for errors which are fixed for every entangling operation, while the second criterion will account for strength-dependent effects like residual spin-motion entanglement. In the mathematical description that follows, these two criteria are expressed as the L_0 and L_1 norms of W , respectively.

B. Mathematical description

We present in this section a mathematical statement of the target coupling graph construction problem, as motivated by the preceding physical description:

Problem Statement 2 (Mathematical). Given the target adjacency matrix $A \in \mathbb{R}^{n \times n}$ of graph G and an intrinsic (hardware-dependent) adjacency matrix $J \in \mathbb{R}^{n \times n}$ for $n \in \mathbb{Z}_+$, find $P \in \{1, -1\}^{k \times n}$ and a diagonal strength matrix $W \in \mathbb{R}^{k \times k}$ such that

$$A = P^T W P \odot J, \quad (12)$$

where \odot is the element-wise multiplication operation. We are interested in minimizing two objectives, $\|W\|_0$ and $\|W\|_1$, which denote the L_0 and L_1 norms of the diagonal of W , respectively. In other words, $\|W\|_0$ is the number of nonzero entries along the diagonal, and $\|W\|_1$ is the sum of the absolute values of the diagonal entries.

Motivated by the discussion leading to Eq. (5), for the rest of the paper we restrict ourselves to J corresponding to the unweighted complete graph K_n . Let the strength matrix W take arbitrary values, and fix J to be $J_{i,j} = 1$ for $i \neq j$, and $J_{i,i} = 0$ for all $i \in \{1, \dots, n\}$.

We will first consider minimizing the number of Ising operations, i.e., the L_0 norm of the strength matrix W , and define a new combinatorial quantity called the *coupling number* of a graph:

Definition 2 (Graph coupling number). We denote the minimum number of Ising operations needed to construct a graph, i.e., the L_0 norm $\|W\|_0$, as the graph coupling number, denoted by $\text{gc}(G)$.

This problem has not been studied in combinatorial optimization (to the best of our knowledge). We first observe that any $\{\pm 1\}$ operation sequence creates a sign pattern over a complete graph: -1 edges corresponding to a complete bipartite graph, and $+1$ edges correspond to complete graphs within each bipartition. Therefore the notion of a graph coupling number has an interesting connection to the following *biclique partition number*:

Definition 3. Given an undirected graph G , the *biclique partition number* of graph G is defined as the minimum number of edge-disjoint bicliques (i.e., complete bipartite graphs) of G whose union includes all of the edges of G . We denote this number by $\text{bp}(G)$.

The problem of determining the biclique partition number of a graph was introduced by Graham and Pollak in 1971 [31] and is known to be NP hard [32]. We will show that one can construct any biclique using a constant number of Ising operations (irrespective of the size of the graph), which can be used to show $\text{gc}(G) \leq 3\text{bp}(G) + 1$ for any unweighted graph G . However, this does not immediately imply NP hardness for the graph coupling problem—indeed, $\text{bp}(K_n) = n - 1$ [31], whereas $\text{gc}(K_n) = 1$. We next lay down some initial observations and approximation bounds for the graph coupling number (using a partitioning of the graph edges into bicliques, in Sec. IV). We verify experimentally that our worst-case approximation bounds are order optimal for small graphs (modulo the choice of a parameter M , defined in Appendix B), and therefore these methods can be of immediate use to quantum physicists.

IV. SOLUTION METHODS

In this section we give combinatorial methods for constructing operation sequences with small L_0 norm. Our proposed construction of unweighted graphs has a linear upper bound on the L_0 norm, i.e., $\|W\|_0 = O(n)$, and our construction for weighted graphs requires $\|W\|_0 = O(m)$ number of Ising operations. We also show that any graph with distinct edge weights needs at least $\Omega(\log n)$ Ising operations, i.e., the maximum graph coupling number on all graphs with n vertices is $\text{gc}(G) = \Omega(\log n)$. Finally, we describe a simple mixed-integer program to find optimal solutions on small graphs.

Prior work by Leung *et al.* [29] outlined a deterministic method to couple any desired pair of qubits within the molecules used for NMR quantum computing. NMR qubits are subject to a global, pairwise ZZ coupling, like H_{Ising} , which is always on. They proposed a construction to decouple all qubits and selectively recouple any single pair of qubits in $O(n)$ Ising operations interleaved with single-qubit bit flips, which can be mapped to the problem formulation in Eq. (12) with strictly non-negative W . Therefore, using this construction for all $m = |E|$ edges in E , a target coupling graph can be produced in $O(nm)$ Ising operations. In our trapped ion system, however, H_{Ising} strengths can also be negative, and therefore we are able to simplify the construction as well as reduce the upper bound on the number of operations to $O(m)$ for weighted graphs and $O(n)$ for unweighted graphs.

A. Union-of-stars construction

In this section we give general constructions for weighted and unweighted graphs. We will construct a weighted graph in $O(m) = O(n^2)$ Ising operations by constructing each edge in a constant number of steps and composing those constructions. For unweighted graphs we will construct a star subgraph (wherein a single node is adjacent to a set of nonadjacent nodes) in a constant number of steps and compose these

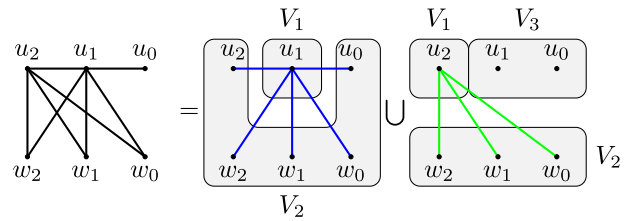


FIG. 1. An example construction for the union-of-stars algorithm for an unweighted graph (Theorem 6). The original graph (left) can be decomposed into two star graphs, represented in blue and green, respectively. Since each star is a complete bipartite graph, it can be constructed using Lemma 4, with the sets V_1, V_2, V_3 specified for each of the stars. The construction of each star takes four Ising operations, but since one operation is common across the stars, we end up with a total of seven operations for this construction by combining the common one using Lemma 3.

constructions to build the graph. Since the edge set of an unweighted graph is the union of at most $n - 1$ edge-disjoint stars, this results in an $O(n)$ construction for unweighted graphs. Two example union-of-stars constructions for the same graph are given in Figs. 1 and 2.

We denote a graph G as $G = (V, E, z)$, where $z \in \mathbb{R}^{|E|}$ is the weight function on edges E . We first claim that operation sequences for constructing two different edge weights on the same graph can be combined. In particular, this will imply that we can simply augment the sequences for disjoint subgraphs (with weight 0 on nonedges) to construct the target coupling graph.

Lemma 1. For weighted graphs $G_1 = (V, E, z_1)$ and $G_2 = (V, E, z_2)$ with vertex set V and edge set E with weights $z_1, z_2 \in \mathbb{R}^{|E|}$, respectively, if $G = (V, E, z_1 + z_2)$, then $\text{gc}(G) \leq \text{gc}(G_1) + \text{gc}(G_2)$.

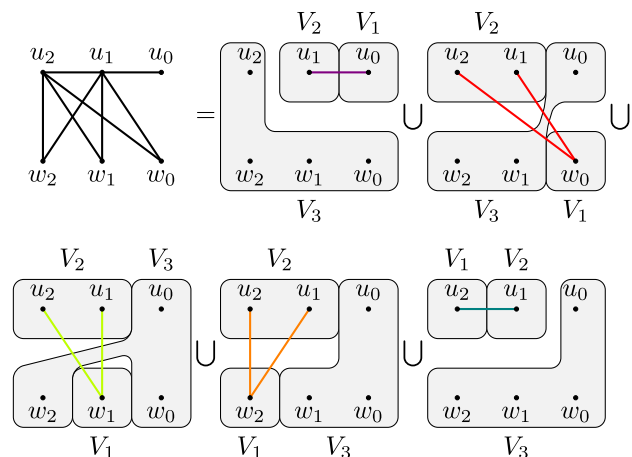


FIG. 2. A different star decomposition for the example in Fig. 1. In Theorem 6, choosing a different ordering for the vertices can result in a decomposition into a larger number of stars and therefore in a larger number of Ising operations. The ordering for vertices in this case is u_0, w_0, w_1, w_2, u_2 , while the ordering for Fig. 1 is u_1, u_2 . Notice that the maximum degree for any star is 2 in this decomposition, which could possibly be useful under different error assumptions.

Proof. Let A_1, A_2 be the adjacency matrices of G_1, G_2 , respectively (i.e., $A_{i,j} = z_{(i,j)}$ if $(i, j) \in E$ and 0 otherwise). Then the adjacency matrix of G is $A_1 + A_2$.

Let $A_1 = (P_1^T W_1 P_1) \odot J$ and $A_2 = (P_2^T W_2 P_2) \odot J$, where P_1 is a $k_1 \times n$ matrix and P_2 is a $k_2 \times n$ matrix for some k_1, k_2 . We construct the matrix $P \in \{-1, 1\}^{(k_1+k_2) \times n}$ by augmenting P_1 and P_2 as follows: for all $j \in [1, n]$,

$$P_{i,j} = \begin{cases} (P_1)_{i,j} & \text{if } i \leq k_1 \\ (P_2)_{i-k_1,j} & \text{if } k_1 < i \leq k_1 + k_2. \end{cases}$$

That is, the first k_1 rows are the matrix P_1 , and the next k_2 rows are the matrix P_2 . We define a diagonal square matrix W of size $k_1 + k_2$ as follows:

$$W_{i,i} = \begin{cases} (W_1)_{i,i} & \text{if } i \leq k_1, \\ (W_2)_{i-k_1,i-k_1} & \text{if } k_1 < i \leq k_1 + k_2. \end{cases}$$

That is, the diagonal entries in the first k_1 rows in W are the diagonal entries in W_1 , and those in the next k_2 rows are the diagonal entries in W_2 . From a simple calculation,

$$P^T W P \odot J = P_1^T W_1 P_1 \odot J + P_2^T W_2 P_2 \odot J = A_1 + A_2.$$

Choose $k_1 = \text{gc}(G_1)$ and $k_2 = \text{gc}(G_2)$, so that $\text{gc}(G) \leq k = \text{gc}(G_1) + \text{gc}(G_2)$. This proves our claim. ■

Corollary 2. For unweighted graphs $G_1 = (V, E_1)$ and $G_2 = (V, E_2)$ where $E_1 \cap E_2 = \emptyset$, if $G = (V, E_1 \cup E_2)$, then $\text{gc}(G) \leq \text{gc}(G_1) + \text{gc}(G_2)$.

In many cases, one can do better than adding graph coupling numbers together by removing duplicate rows in P . For a matrix P and a row vector r of P , let $P \setminus r$ denote the matrix P with row r removed.

Lemma 3. Suppose matrices P, W satisfy $(P^T W P) \odot J = A$, where A is the adjacency matrix of some graph G . If there are rows r, s in P such that $r = \pm s$, then there exists matrix W_1 such that $[(P \setminus s)^T W_1 (P \setminus s)] \odot J = A$.

Proof. Let $r = \eta s$, where $\eta \in \{-1, 1\}$. Let w_r, w_s be the diagonal entries in W corresponding to rows r, s , respectively, in P . To obtain matrix W_1 from W , delete the row and column containing w_s and replace w_r by $w_r + \eta w_s$. Then it is easily seen that $[(P \setminus s)^T W_1 (P \setminus s)] \odot J = (P^T W P) \odot J = A$. ■

We next show that any biclique (i.e., complete bipartite graph) and a union of isolated vertices can be constructed using four Ising operations, which will give us an upper bound on the graph coupling number for arbitrary graphs.

Lemma 4. Given a weighted graph $G = (V, E, z)$, where V is the disjoint union of V_1, V_2, V_3 , (i.e., $V = V_1 \cup V_2 \cup V_3$ and $V_i \cap V_j = \emptyset$ for $(i \neq j)$), $E = \{(u, v) : u \in V_1, v \in V_2\}$, and $z_e = \mu$ for all $e \in E$ (that is, G is a complete bipartite graph except some isolated vertices, with all edge weights equal), $\text{gc}(G) \leq 4$.

Proof. We give matrices P, W with $k = 4$ such that $P^T W P \odot J = A$. We let column j of P correspond to vertex $v_j \in V$. To define entry $P_{a,j}$ of the matrix P for each $a \in \{1, 2, 3, 4\}$ and $j \in \{1, \dots, n\}$, we define numbers

$P_{a,v_1}, P_{a,v_2}, P_{a,v_3}$ and let

$$P_{a,j} = \begin{cases} P_{a,v_1} & \text{if } v_j \in V_1, \\ P_{a,v_2} & \text{if } v_j \in V_2, \\ P_{a,v_3} & \text{if } v_j \in V_3. \end{cases}$$

We now give matrix W and specify entries P_{a,v_l} for $l \in \{1, 2, 3\}, a \in \{1, 2, 3, 4\}$:

$$P = \begin{pmatrix} 1 & 1 & -1 \\ 1 & -1 & -1 \\ 1 & 1 & 1 \\ 1 & -1 & 1 \end{pmatrix}, \quad W = \begin{pmatrix} \frac{\mu}{4} & 0 & 0 & 0 \\ 0 & -\frac{\mu}{4} & 0 & 0 \\ 0 & 0 & \frac{\mu}{4} & 0 \\ 0 & 0 & 0 & -\frac{\mu}{4} \end{pmatrix}.$$

Note that $(P^T W P)_{i,j} = \sum_{a=1}^k P_{a,i} P_{a,j} W_{a,a}$. Suppose $v_i \in V_1, v_j \in V_2$. We show that the edge weight of (v_i, v_j) in our construction is μ , as expected: since $i \neq j$,

$$(P^T W P \odot J)_{i,j} = \left[(1)(1)\frac{\mu}{4} + (1)(-1)\frac{-\mu}{4} + (1)(1)\frac{\mu}{4} + (1)(-1)\frac{-\mu}{4} \right] \times 1 = \mu = A_{i,j}.$$

A similar calculation shows that when $v_i \in V_1, v_j \in V_3$, $(P^T W P \odot J)_{i,j} = 0$ since there is no edge between V_1, V_3 and therefore $A_{i,j} = 0$. One can check this for every possibility of v_i, v_j , so that $P^T W P \odot J = A$. Therefore, $\text{gc}(G) \leq 4$. ■

The above decomposition is crucial in constructing graphs edge-by-edge while incorporating arbitrary edge weights, i.e., decomposing the graph into a union of edges (wherein each edge is a trivial biclique), which gets us the following theorem.

Theorem 5. For any weighted graph $G = (V, E, z)$, $\text{gc}(G) \leq 3m + 1 = O(m)$, where m is the number of edges in G .

Proof. Suppose we are given a weighted graph G on n vertices. Then every edge can be constructed in at most four steps by the above lemma: Given an edge $e = (u, v) \in E$, choose $A = \{u\}, B = \{v\}, C = V - \{u, v\}$, so that $E = \{e\}$, and $\mu = z_e$. Lemma 1 then implies that $\text{gc}(G) \leq 4m$. Further note that the third row in the matrix P is all 1's, and this is common across the constructions for each edge. Therefore, from Lemma 3 we can combine these rows into a single row by summing their strengths, thus giving us an upper bound of $3m + 1$ on the total number of Ising operations. ■

Although for general weights, we give a bound of $3m + 1$ total Ising operations, we can do much better for unweighted graphs. We show that there exists a decomposition of any graph's (unweighted) edge set into at most $n - 1$ star graphs (i.e., bicliques where one side of the partition has only one vertex), which can be used to give a linear bound on the graph coupling number. We refer to this construction as the *union of stars*.

Theorem 6. For any unweighted graph $G = (V, E)$, E can be partitioned into $n - 1$ star graphs (i.e., $K_{1,s}$ for $s < n$), which in turn implies that the graph coupling number $\text{gc}(G) \leq 3n - 2 = O(n)$.

Proof. We first show that we can write the edge set of $G = (V, E)$ as the disjoint union of at most $n - 1$ stars. Consider an arbitrary ordering of vertices v_1, \dots, v_n . For $1 \leq i \leq n - 1$, define the star $S_i = \{(v_i, v_j) \in E : i < j\}$, that is, it consists of all edges (v_i, v_j) where i is the lower index. Each S_i is a star, and each edge in E belongs to exactly one S_i . Therefore E is the disjoint union of at most $n - 1$ nonempty stars.

We now show how to construct each S_i in at most four steps: Since G is unweighted, choose $\mu = 1$ in Lemma 4. Then, each S_i (with possibly other isolated vertices) can be constructed in at most four steps, since a star is also a biclique. This, combined with Corollary 2, implies that $\text{gc}(G) \leq 4(n - 1)$, which after combining rows with all 1's in each construction give us the bound in the theorem, by Lemma 3. ■

The bound in Theorem 6 can be improved by finding a smaller-sized partition of the edge set of the graph into bicliques (using Lemma 4), giving a bound of $\text{gc}(G) \leq 3\text{bp}(G) + 1$. However, the biclique partition is NP-hard to compute. Moreover, it is known that for complete graphs on n vertices, the biclique partition number $\text{bp}(K_n) = n - 1$ [31], so that the upper bound on $\text{gc}(G)$ still remains $3n - 2$ (using union-of-stars construction). Note that in any construction, one can further reduce the L_0 norm by removing repeating rows in P , using Lemma 3, although the amount of such a reduction can be instance dependent.

B. A lower bound

We next discuss a lower bound on the graph coupling number of any arbitrary graph with distinct edge weights:

Lemma 7. For each n , there is a weighted graph G with n vertices such that $\text{gc}(G) = \Omega(\log n)$.

Proof. For any k note that $(P^T W P \odot J)_{i,j} = \sum_{a=1}^k P_{a,i} P_{a,j} W_{a,a}$ if $i \neq j$ and it is equal to 0 otherwise. That is, each nondiagonal entry of $P^T W P \odot J$ is a linear combination of Ising operation strengths $W_{a,a}$ with coefficients either 1 or -1 (since $P \in \{-1, 1\}^{k \times n}$). The set of all such linear combinations has cardinality of at most 2^k . Consider any complete graph on n vertices with distinct edge weights. Then there are at least $\frac{n(n-1)}{2}$ distinct entries in A . When $\frac{n(n-1)}{2} > 2^k + 1$, by our previous observation, $A \neq P^T W P \odot J$ for any diagonal matrix $W \in \mathbb{R}^{k \times k}$ and matrix $P \in \{\pm 1\}^{k \times n}$. That is, for $P^T W P \odot J = A$ to hold, we need $k \geq \log_2(\frac{n(n-1)}{2} - 1)$, which implies that $\text{gc}(G) = \Omega(\log n)$. ■

C. Optimal solutions through brute force

We describe a MIP that can be solved to optimality. In the preceding sections we have given polynomial constructions for generating both weighted and unweighted coupling graphs, which gave upper bounds for the graph coupling number. It is important to note that MIPs are not generally solvable in polynomial time; therefore this is not an efficient method for finding operation sequences. Instead, by solving the MIP to optimality, we identify the optimality gap and quantify the potential gains if a more efficient construction can be found.

To convert the graph coupling problem into a MIP, we construct a *complete* operation matrix P by enumerating all possible rows with elements ± 1 . In other words, we must consider all possible choices of bit flips to prove a given sequence is optimal. Since negating a row in P does not change $P^T W P$, there are 2^{n-1} unique rows of P to consider. Thus finding the optimal sequence to produce a coupling graph with adjacency matrix A reduces to finding a strength matrix W such that $P^T W P \odot J = A$. The only variable is the diagonal strength matrix W , and the objective is to minimize its L_0 or L_1 norm. A complete description of the MIP is included in Appendix B.

We note that in practice, we have observed that subsampling the complete P matrix and running the MIP for a fixed amount of time often produces a tractable *good* solution (i.e., better running time and memory requirements); however in this case, we cannot obtain provable bounds to optimality. In the next section we compare optimal solutions to the constructions for small graphs of up to eight vertices (optimal up to the choice of the parameter M , which was set to the sum of the edge weights in the simulations). The brute force search to optimality is time intensive, with some graphs taking hours to complete or even longer than 24 hours [33].

V. NUMERICAL EXPERIMENTS

In order to test the utility of the union-of-stars construction, we conduct two sorts of numerical experiments. In Sec. V A we compare the required resources to the derived upper bounds and the optimal controls obtained by brute force. To demonstrate the utility of running MaxCut QAOA with the union-of-stars construction of the cost Hamiltonian, in Sec. V B we compare the simulated performance of our construction and the standard CNOT construction in the presence of noise.

A. Optimal results

We compare the union-of-stars construction with optimal [34] sequences of uniform H_{Ising} operations, where J is the adjacency matrix of the graph K_n . First we generated 96 Erdős-Rényi random unweighted graphs with seven vertices, where each edge has a probability p to exist, with four random graphs for each $p \in 0.04 \times \{1, 2, \dots, 24\}$. For each graph we determined the optimal solution using the brute force MIP optimizing for either the minimal L_0 or L_1 norm. While the union-of-stars construction has upper bound $3n - 2$ for the number of Ising operations (L_0 norm), in practice many graphs can be constructed with fewer than $n - 1$ stars. We chose to start with the largest star (highest degree vertex), then add the next largest star, and so on until the target graph was realized. In addition, we check each P matrix for identical rows and combine them by summing the corresponding strengths.

Figure 3 compares the union-of-stars solution with the upper bound and the brute force optimal solution. We observe that the union of stars typically performs within a factor of 2 of optimality in the L_0 norm, while the L_1 norm is closer to a factor of 3 worse.

Next, we tested random weighted graphs by randomly assigning edge weights sampled uniformly from $\{1, 2, 3\}$ to Erdős-Rényi graphs with seven vertices and similar edge inclusion probabilities. As shown in Fig. 4, the union-of-stars

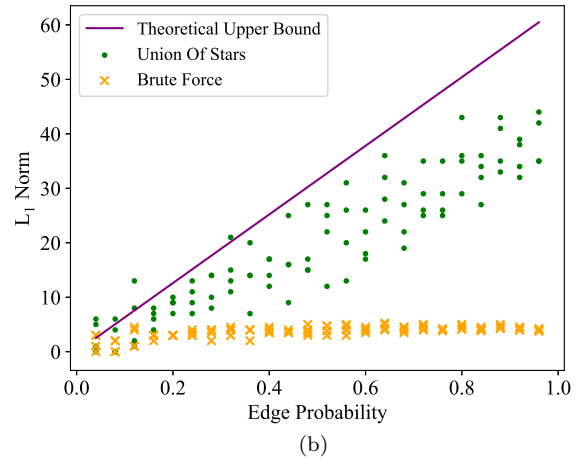
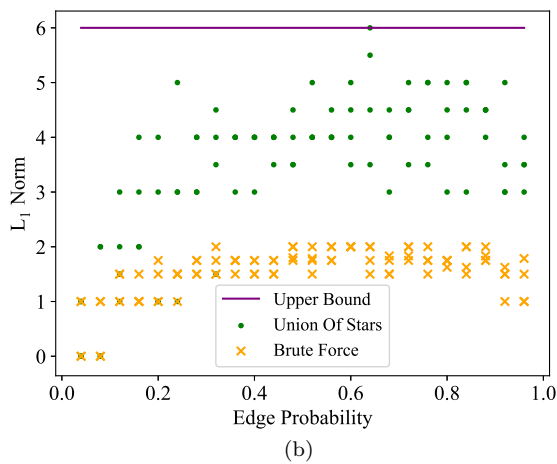
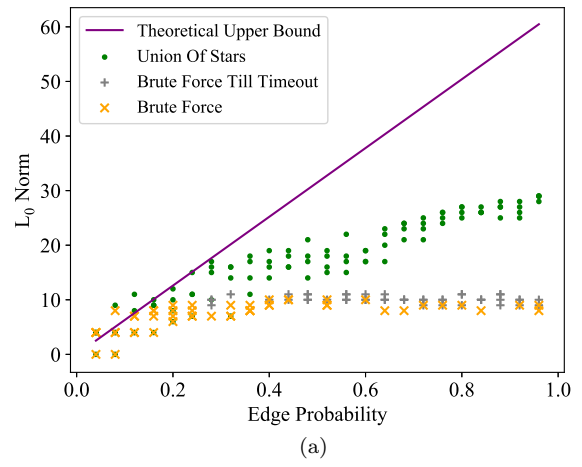
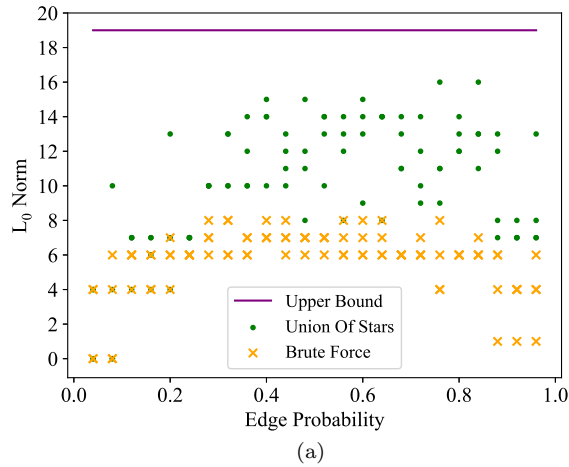


FIG. 3. A comparison of the union-of-stars construction to the optimal sequence found with the brute force MIP for random unweighted graphs with seven vertices and measured by the (a) L_0 norm and (b) L_1 norm defined in Sec. III B. The upper bound proved with the union of stars is $3n - 2$ for the L_0 norm (total number of Ising operations) and $n - 1$ for L_1 (sum of the absolute magnitude of strengths).

FIG. 4. A comparison of union of stars against optimality for random weighted graphs on seven vertices for the (a) L_0 and (b) L_1 norms. The upper bound now depends on the *expected* number of edges as described in the main text. That some constructions exceed this expectation reflects the nonzero probability of having more edges than \bar{m} .

method again performs well. For comparison, the *expected* upper bounds of $3\bar{m} + 1$ for the L_0 norm and $3\bar{m}$ for the L_1 norm are plotted, where $\bar{m} = pn(n - 1)/2$ is the expected number of edges for edge inclusion probability p . Notably, solving the MIP to optimality for the L_0 norm takes significantly longer compared to the unweighted graphs. Some instances in Fig. 4(a) timed out (24 h) before reaching optimality; in this case, the suboptimal values are plotted instead. In Fig. 4(b) we observe that when we optimize instead for the L_1 norm on weighted graphs, the optimal solution is much better than the union-of-stars construction for graphs with many edges.

may be bounded from above by $n + 1$ (i.e., graph coupling number is linear), and, therefore, the union-of-stars method is order-optimal for small graphs.

Finally, we used the MIP to find the worst-case graph coupling number (L_0 norm) for all nonisomorphic unweighted graphs with up to eight vertices using the enumeration of McKay [35]. These results are given in Fig. 5. While the linear pattern we see between the worst-case graph coupling number and the number of vertices does not necessarily hold for larger graphs, it leads us to suppose that the number of Ising operations required to construct any unweighted graph on n vertices with uniform H_{Ising} and single-qubit bit flips

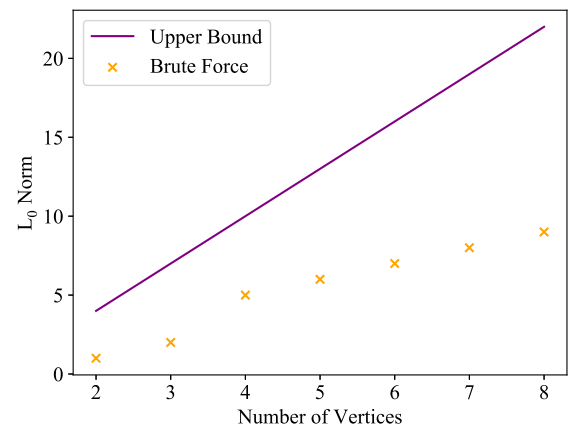


FIG. 5. Largest graph coupling number observed in the optimal generation of unweighted graphs of up to eight vertices compared to the $3n - 2$ upper bound from the union-of-stars construction.

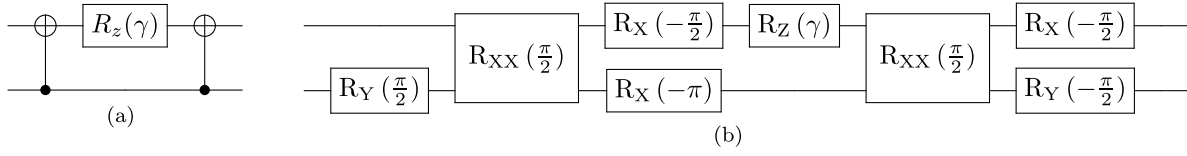


FIG. 6. Decomposition of the $Z_i Z_j$ terms into (a) CNOT gates and (b) ion native XX interactions. One-qubit rotations are analogous to the definition given before Eq. (6) and $R_{XX}(\chi) = \exp\{-i(\chi/2)\sigma_1^x \sigma_2^x\}$.

B. Noisy QAOA

In the standard QAOA [6], a cost and a mixing operator are applied in an alternating fashion in order to drive the solution to an extremal state of the cost operator. The quantum hardware is programmed to prepare the state

$$|\vec{\gamma}, \vec{\beta}\rangle = \prod_{k=1}^p e^{-i\beta_k B} e^{-i\gamma_k C'} |+\rangle^{\otimes n}, \quad (13)$$

where the mixing operator is $B = \sum_{i=1}^n \sigma_i^x$ and the MaxCut cost operator C' is related to the coupling operator C [Eq. (2)]:

$$C' = \sum_{i=1}^{n-1} \sum_{j=i+1}^n a_{i,j} \frac{1 - \sigma_i^z \sigma_j^z}{2} = -\frac{C}{2} + \sum_{i=1}^{n-1} \sum_{j=i+1}^n \frac{a_{i,j}}{2}. \quad (14)$$

After sampling the quantum state, the estimated expectation value of the cost, $\langle C' \rangle = \langle \vec{\gamma}, \vec{\beta} | C' | \vec{\gamma}, \vec{\beta} \rangle$, is computed, and the $2p$ parameters $\vec{\gamma}, \vec{\beta}$ are classically optimized through repeated calls to the quantum hardware, increasing the likelihood of observing a MaxCut solution.

The ZZ -coupling terms found in C' can be implemented in a quantum circuit in various ways, depending on the physical quantum architecture and its natural, native gates. For digital quantum computers, the cost unitary is usually programmed with two CNOT gates and a parameterized Z rotation (Fig. 6) for each edge in the problem graph. For a graph with m edges, this requires at least $2m$ CNOT gates, and more if SWAPS are required to connect distant qubits. In ion-trap hardware, one can relate each CNOT gate to one XX -type Mølmer-Sørensen interaction, up to single-qubit gates [36]. Here we compare and contrast this “standard” compilation to the union-of-stars method presented previously, including quantum error channels on all gates.

Since the two methods scale differently in terms of their gate count, we expect different performance when noise is considered. To test this, we investigate both compilation models with four example graphs when using a composite quantum noise model simulated in QISKIT [37]. Specifically, we consider two-qubit XX Pauli noise channels that act on all CNOT gates and global Mølmer-Sørensen or Ising operations described in the rows of P . This error can be modeled by the following Kraus operator [38]:

$$E_{xx} = \{\sqrt{p_{xx}} XX, \sqrt{1 - p_{xx}} II\},$$

where p_{xx} is the probability of an XX error. For the global MS operations, we assume these two-qubit error channels are independently applied to all pairs with probability $p_{xx} = p/[n(n-1)/2]$, so that an error occurs with probability p [39]. We consider these as “major” sources of noise, as these operations are likely more prone to error than single-qubit operations. For each one-qubit gate, we assume “minor” depolarizing noise and “major” dephasing noise. All minor

errors are fixed to occur 10% as frequently as the major errors. All qubits also experience measurement noise, which is also grouped as a minor source of error [40].

In Fig. 7 we show the results of noisy simulations of MaxCut QAOA for four small graphs at $p = 1$ and find that, due to the reduced required quantum resources in the union-of-stars method, we see reduced error in the resulting approximation ratio, $\langle C' \rangle / C'_{\max}$, for dense graphs. Figures 7(a)–7(c) show similar noise tolerance for both cases due to similar required numbers of entangling gates. However, we see that Fig. 7(d) shows significantly better performance for the “GMS” compilation built from the union-of-stars method due to its fewer quantum operations. This indicates that there are classes of graphs, including dense unweighted graphs, that are more favorable to construct with the union-of-stars method. Compilations for each of these graphs are given in Appendix D.

C. Resource estimates

Having shown an efficient construction of arbitrary coupling graphs through repeated applications of the Ising interaction interleaved with individual bit flips, we now estimate how long such operation sequences will take to perform. We estimate operation times based on our experience with the hyperfine qubit in $^{171}\text{Yb}^+$ [41–43]; however, these gate durations are similar to most trapped-ion quantum computing hardware within an order of magnitude.

We assume a single-qubit bit flip takes time $T_\pi = 5 \mu\text{s}$ and a two-qubit MS gate $T_{\text{MS}} = 100 \mu\text{s}$. For the center-of-mass mode of an n -ion chain in a harmonic trap, $b_{j,0} = 1/\sqrt{n}$, and therefore the native coupling $J_{i,j}$ scales as $1/n$ for fixed intensity and detuning, following Eq. (3). Therefore we estimate the time for an Ising operation is $T_{\text{Ising}} = n(50 \mu\text{s})$ [44]. In the union-of-stars construction, each Ising operation is assigned a strength, and the L_1 norm gives the sum of the absolute magnitude of these strengths. The number of rounds of bit flips is one more than the number of Ising operations (rows of P), or $L_0 + 1$. Assuming the bit flips are performed in parallel, then the total time τ_G to implement a coupling graph is

$$\tau_G = (L_0 + 1)T_\pi + L_1 T_{\text{Ising}}. \quad (15)$$

For unweighted graphs, our upper bounds give $\tau_G < (3n + 1)T_\pi + (n - 1)T_{\text{Ising}}$. Therefore implementing each MaxCut QAOA cost layer of an arbitrary, unweighted 10-node graph will take no more than 5 ms, while a 100-node graph would take at worst 500 ms, which could be further reduced by increasing laser intensity. For comparison, the T_1 time of the hyperfine ground state qubit in $^{171}\text{Yb}^+$ is effectively infinite, and T_2 exceeding 10 min has been demonstrated [45]. Implementation time is proportional to the number of QAOA layers p , and given that our bound is not tight, this is a pessimistic

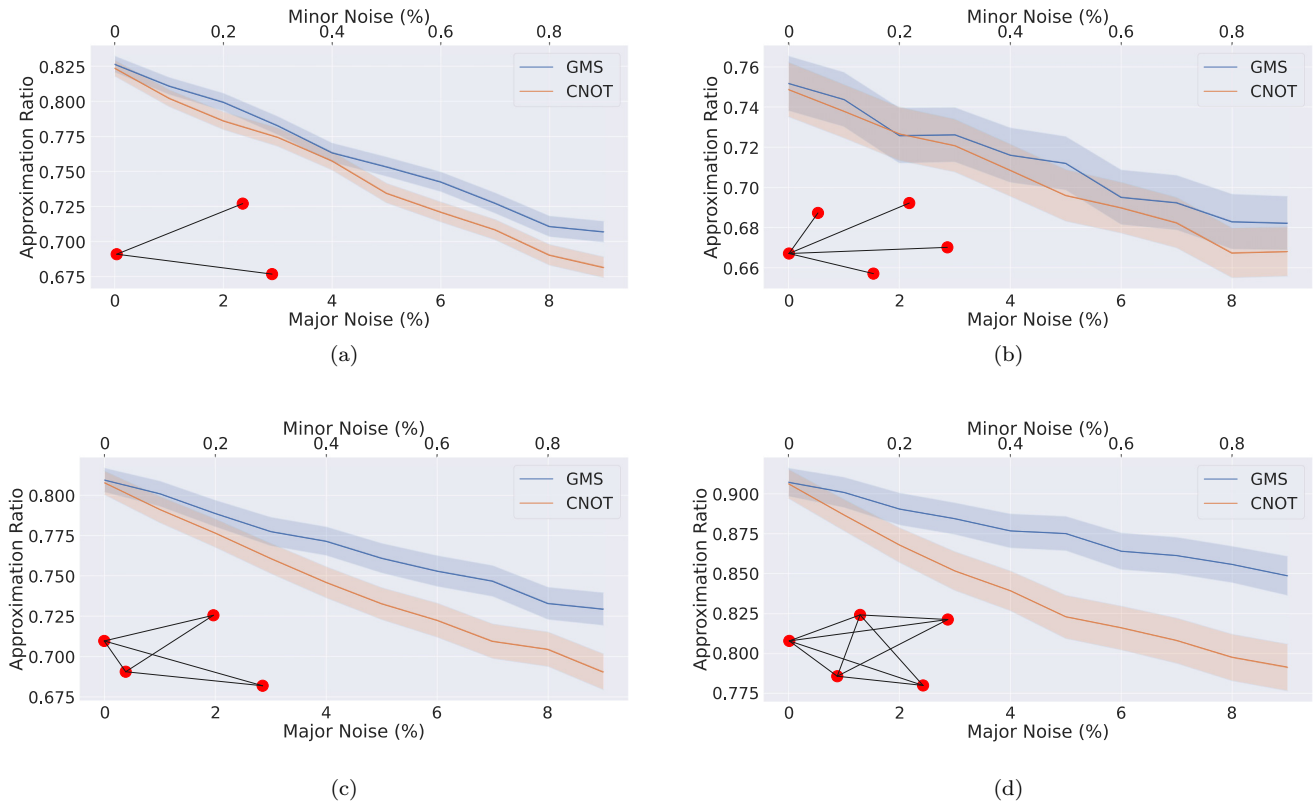


FIG. 7. Approximation ratio when simulating the noisy $p = 1$ QAOA for two different compilation methods. “CNOT” compilation refers to compiling in terms of two-qubit XX (locally equivalent to CNOT gates) gates, while “GMS” refers to compiling following the union-of-stars method and building in terms of global Mølmer-Sørensen interactions. Major and minor noise sources are detailed in the text and have a fixed relationship as indicated on the horizontal axis. Each subfigure shows an inset displaying the example unweighted graph that is considered for both compilation schemes.

estimate. In Fig. 3 we observe that total Ising and bit-flip operation counts are often two to five times lower than this bound. When combined with further reduction of the Ising operation time, MaxCut QAOA with hundreds of ions is feasible.

VI. CONCLUDING REMARKS

We have provided a method to construct arbitrary coupling operations on quantum spin systems using only global H_{Ising} operations and single-qubit bit flips. With this method, the number of Ising operations necessary scales linearly in the number of qubits for unweighted graphs and linearly in the number of edges for weighted graphs. An interesting consequence of this trend is that the use of global, infinite-range entangling operations may be more efficient than the use of individual two-qubit gates when applied to algorithms involving dense, unweighted coupling operations (such as QAOA). This is because the number of two-qubit gates needed to construct a coupling operation scales in the number of edges rather than vertices. Although some two-qubit gates can be performed in parallel on certain hardware, sparse hardware connectivity graphs may also require many SWAP operations. Recent work, which cites a preliminary version of this article, suggests that nonstandard QAOA implementations, like the one presented here, are necessary for scaling to large MaxCut graphs [46].

While our union-of-stars construction performs well, we have not provided an efficient, scalable algorithm to find the

optimal operation sequence for any arbitrary graph. We speculate that this problem is NP-hard, but we have not rigorously proven NP-hardness. Therefore there is scope for further research to answer several important questions. For example, can we solve the problem quickly and optimally for certain types of graphs? Can we establish a tighter upper bound on construction? And is this problem NP-hard in general?

It is interesting to consider whether the complexity of compilation will ever affect what we define as the complexity of a quantum algorithm. For example, if finding an efficient compilation requires an exhaustive search, are we just replacing one NP-hard problem with another? For MaxCut QAOA, our union-of-stars construction provides feasible compilations with polynomial complexity but without the guarantee of optimality. This optimality gap will only ever be a serious concern if we find that our distance to optimality in graph construction is directly correlated to the distance to optimality of our target algorithm (e.g., QAOA) due to a significant increase in noisy operation count. For now, particularly for unweighted graphs, the union-of-stars method we have presented serves as an effective solution to construct arbitrary coupling operations.

ACKNOWLEDGMENTS

This material is based upon work supported by the Defense Advanced Research Projects Agency (DARPA) under Contract No. HR001120C0046. The authors are also grateful to

Hassan Mortagy for his help in running the experiments on the computing cluster at Georgia Tech.

APPENDIX A: EXAMPLE

As a simple example, we will show the construction of a target coupling graph on three qubits using only global H_{Ising} (characterized by J) and single-qubit bit flips. We will assume that our global H_{Ising} is perfectly uniform, so J is the adjacency matrix of K_3 , and we will consider the construction of the simple coupling graph with a unit-weight edge between qubits 1 and 2, and a unit-weight edge between qubits 2 and 3. Therefore we have the following A and J :

$$A = \begin{pmatrix} 0 & 1 & 0 \\ 1 & 0 & 1 \\ 0 & 1 & 0 \end{pmatrix}, \quad J = \begin{pmatrix} 0 & 1 & 1 \\ 1 & 0 & 1 \\ 1 & 1 & 0 \end{pmatrix}. \quad (\text{A1})$$

Now we must find some diagonal $W \in \mathbb{R}^{k \times k}$ and $P \in \mathbb{R}^{k \times 3}$ so that $A = P^T W P \odot J$ is satisfied. A solution P and W that happens to be optimal in graph coupling number (k) can be found via the union-of-stars method and they are

$$P = \begin{pmatrix} 1 & 1 & 1 \\ 1 & -1 & 1 \end{pmatrix}, \quad W = \begin{pmatrix} 0.5 & 0 \\ 0 & -0.5 \end{pmatrix}. \quad (\text{A2})$$

To translate this to an experimental implementation of H_{Ising} and X_j operations, we iterate through each diagonal element of W and each corresponding row of P . So first, because $W_{1,1} = 0.5$ we apply a global H_{Ising} of strength 0.5, and because $P_1 = [1, 1, 1]$, we apply no X_j operations. The coupling operator is given by

$$C_1 = 0.5\sigma_1^z\sigma_2^z + 0.5\sigma_2^z\sigma_3^z + 0.5\sigma_1^z\sigma_3^z. \quad (\text{A3})$$

This corresponds to a complete coupling graph K_3 with edge weights of 0.5. In the second step, we apply a global H_{Ising} of strength -0.5 . We achieve the negation by switching the sign of our detuning from the center-of-mass mode [see Eq. (5)]. Because $P_2 = [1, -1, 1]$, we also apply X_2 before and after the H_{Ising} . These bit-flip operations invert the basis of qubit 2 and negate coupling operation, i.e., $\sigma_x\sigma_z\sigma_x = -\sigma_z$. This coupling operator is

$$\begin{aligned} C_2 &= (i\sigma_2^x)(-0.5\sigma_1^z\sigma_2^z - 0.5\sigma_2^z\sigma_3^z - 0.5\sigma_1^z\sigma_3^z)(-i\sigma_2^x) \\ &= 0.5\sigma_1^z\sigma_2^z + 0.5\sigma_2^z\sigma_3^z - 0.5\sigma_1^z\sigma_3^z. \end{aligned} \quad (\text{A4})$$

The overall coupling operation is

$$C = C_1 + C_2 = \sigma_1^z\sigma_2^z + \sigma_2^z\sigma_3^z. \quad (\text{A5})$$

This corresponds to the desired coupling graph, a unit-weight ZZ-spin coupling between qubits 1 and 2 as well as between qubits 2 and 3.

APPENDIX B: MIP FORMULATION OF BRUTE FORCE L_0 MINIMIZATION

As discussed in Sec. IV C, we can use a mixed-integer program to find the optimal operation sequence for small graphs that minimizes the L_0 norm of the strength matrix W . Recall that our problem is

$$\min \|W\|_0 : \{P^T W P \odot J = A\},$$

where W is the diagonal strength matrix, P is a matrix with $\{\pm 1\}$ entries, A is the weighted adjacency matrix of the graph to be constructed, and J is the coupling matrix given by $J_{i,j} = 1$ for $i \neq j$ and 0 otherwise. One can formulate a mixed-integer program to track the L_0 norm of W , given all possible bit-flip combinations encoded in $P \in \{\pm 1\}^{k \times n}$ ($k = 2^{n-1}$ for an n node graph). Let b_i denote a binary variable that is equal to 1 whenever $W_{i,i}$ is nonzero, and 0 otherwise. Then the MIP formulation is simply

$$\min \sum_i b_i \quad (\text{B1})$$

$$W_{i,i} \leq b_i M, \quad \text{for } i \in [k], \quad (\text{B2})$$

$$W_{i,i} \geq -b_i M, \quad \text{for } i \in [k], \quad (\text{B3})$$

$$(P^T W P)_{i,j} = A_{i,j} \quad \text{for } i \neq j, \quad (\text{B4})$$

$$b_i \in \{0, 1\}, \quad \text{for } i \in [k], \quad (\text{B5})$$

where M is an upper bound on the absolute value of the strength matrix. We show that for large enough and finite M (set equal to the upper bounds on $\|W_\star\|_\infty$ in the following theorem), the above formulation is equivalent to minimizing the L_0 norm of the strength matrix W .

Theorem 8. Given a graph $G = (V, E, z)$, let W_\star be the optimal strength matrix for the graph coupling problem for G , and let $r = \text{gc}(G) = \|W_\star\|_0$. Also let $Z = \sum_{e \in E} |z(e)|$. Then, for $r > 1$,

$$\|W_\star\|_\infty \leq \begin{cases} r(r-1)^{\frac{r+1}{2}} & \text{if } G \text{ is unweighted,} \\ Z(r-1)^{\frac{r+1}{2}} & \text{if } G \text{ is weighted.} \end{cases}$$

Consequently, using Theorems 5 and 6, we get

$$\|W_\star\|_\infty \leq \begin{cases} (3n-2)^{\frac{3n-1}{2}} & \text{if } G \text{ is unweighted,} \\ Z(3m)^{\frac{3m+1}{2}} & \text{if } G \text{ is weighted.} \end{cases}$$

We defer the proof of this theorem to Appendix C. These upper bounds help us show provable optimality of the mixed-integer program using an appropriately large value of M . In practice, though, it may not make sense to use large strength matrices W due to instability of the quantum system and potential introduction of noise at high strengths. In our computations, therefore, we set this constant as the sum of edge weights in the graph, i.e., $M = \sum_e |z(e)|$ for eight node graphs, and obtain solutions with strengths much smaller than M .

We further note that if the objective is to minimize the L_1 norm, then the program becomes linear:

$$\min \sum_i b_i \quad (\text{B6})$$

$$W_{i,i} \leq b_i, \quad \text{for } i \in [k], \quad (\text{B7})$$

$$W_{i,i} \geq -b_i, \quad \text{for } i \in [k], \quad (\text{B8})$$

$$(P^T W P)_{i,j} = A_{i,j} \quad \text{for } i \neq j, \quad (\text{B9})$$

$$b_i \in \mathbb{R}_+, \quad \text{for } i \in [k], \quad (\text{B10})$$

which is typically easier to solve compared to the L_0 norm minimization and can be solved to optimality without using the big- M constraints.

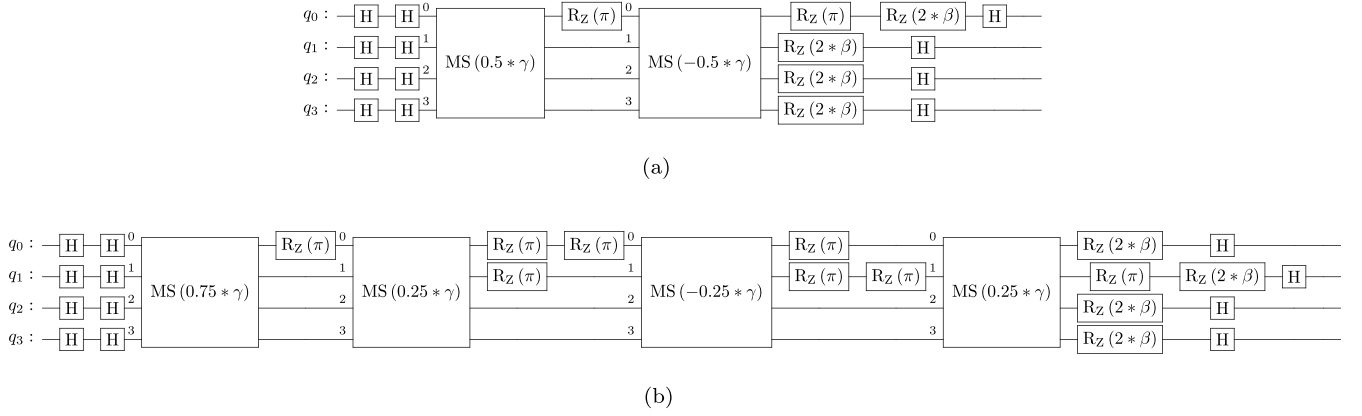


FIG. 8. QAOA circuit for $p = 1$ using global MS interactions which build an (a) four-node star graph and (b) four-node complete graph missing the edge connecting nodes 0 and 1.

APPENDIX C: PROOF FOR THEOREM 8.

For a real matrix B , we define $\|B\|_0 = \sum_{B_{i,j} \neq 0} 1$, $\|B\|_1 = \sum_{i,j} |B_{i,j}|$, and $\|B\|_\infty = \max_{i,j} |B_{i,j}|$, that is, we look at the matrix B as a vector and use the corresponding vector norms. Further, for a square matrix $B \in \{-1, 1\}^{r \times r}$, we use the bound known as Hadamard's inequality [47]:

$$\det(B) \leq r^{\frac{r}{2}}.$$

Suppose B is invertible. For $r = 1$, $\|B^{-1}\|_\infty = 1$. For $r > 1$,

$$\|B^{-1}\|_\infty = \frac{\|\text{adj}(B)\|_\infty}{|\det(B)|} \leq (r-1)^{\frac{r-1}{2}}. \quad (\text{C1})$$

The inequality holds because $\det(B) \geq 1$ (due to invertibility), and the entries of $\text{adj}(B)$ are minors of B , and are therefore bounded by Hadamard's inequality above.

We now proceed to prove the theorem. Recall the graph coupling problem:

$$\min \|W\|_0 : \{P^T W P \odot J = A\},$$

where W is the diagonal strength matrix, P is a matrix with entries in ± 1 , A is the weighted adjacency matrix of the graph to be constructed, and J is the coupling matrix given by $J_{i,j} = 1$ for $i \neq j$ and 0 otherwise.

As in the MIP formulation in Appendix B, we can assume that the rows of P are all possible sequences $\{\pm 1\}^n$ up to sign so that P has $k = 2^{n-1}$ rows, and W is a $k \times k$ diagonal matrix. Then, for $i \neq j$, the constraint $(P^T W P \odot J)_{i,j} = \sum_{a=1}^k P_{a,i} P_{a,j} W_{a,a} = A_{i,j}$ is linear in strengths $W_{a,a}$. Let us say $Q_{(i,j),a} = P_{a,i} P_{a,j}$ for $a \in [k]$ and $i, j \in [n]$, $i \neq j$. For ease of notation, we treat W and A as vectors, and throughout this proof, we use the following reformulation of the problem:

$$\min_{W \in \mathbb{R}^k} \|W\|_0 : QW = A,$$

where Q is an appropriately defined matrix in $\{\pm 1\}^{\frac{n(n-1)}{2} \times k}$ and $A \in \mathbb{R}^{\frac{n(n-1)}{2}}$. As in the statement of the theorem, let W_\star be an optimal strength matrix for this problem and let $r = \|W_\star\|_0$.

Let Q' be the submatrix of Q obtained by removing all columns with indices j for which $(W_\star)_j = 0$, and let W'_\star be the corresponding restriction of W_\star . Then, since $QW_\star = A$, we have $Q'W'_\star = A$, and $Q' \in \{\pm 1\}^{\frac{n(n-1)}{2} \times r}$. We claim that the

columns of Q' are linearly independent, and therefore that $\text{rank}(Q') = r$. To see this, let C_1, \dots, C_r be the columns of Q' . Suppose $C_r = \sum_{i=1}^{r-1} \alpha_i C_i$ for some numbers $\alpha_i \in \mathbb{R}$. Define $v \in \mathbb{R}^r$ as

$$v_j = \begin{cases} (W'_\star)_j + \alpha_j (W'_\star)_r & \text{if } 1 \leq j \leq r-1, \\ 0 & \text{if } j = r. \end{cases}$$

Then, $Q'v = A$ and $\|v\|_0 \leq r-1 < r = \|W'_\star\|_0$, a contradiction. Therefore columns C_1, \dots, C_r are independent.

Since $\text{rank}(Q') = r$, Q' has a set of r linearly independent rows $\{R_1, \dots, R_r\}$ such that the restriction of Q' to these rows is an invertible matrix. Call this matrix Q'' and call the corresponding restriction of A as A' . Then $Q''W'_\star = A'$, where Q'' is an invertible matrix in $\{\pm 1\}^{r \times r}$. Equation (C1) gives us that for $r > 1$,

$$\begin{aligned} \|W_\star\|_\infty &= \|W'_\star\|_\infty = \|(Q'')^{-1} A'\|_\infty \\ &\leq \|(Q'')^{-1}\|_\infty \times \|A'\|_1 \leq \|A'\|_1 (r-1)^{\frac{r-1}{2}}. \end{aligned}$$

For unweighted graphs, $\|A'\|_1 = \|A'\|_0 \leq r$, and therefore $\|W_\star\|_\infty \leq r(r-1)^{\frac{r-1}{2}} \leq r^{\frac{r+1}{2}}$. For weighted graphs, $\|A'\|_1 \leq \|A\|_1 \leq Z$, establishing the bound.

TABLE I. Compilation of graphs from Fig. 7 using global MS operations.

Graph	P	W
(a)	$\begin{pmatrix} 1 & 1 & 1 \\ -1 & 1 & 1 \end{pmatrix}$	$\begin{pmatrix} \gamma/2 & 0 \\ 0 & -\gamma/2 \end{pmatrix}$
(b)	$\begin{pmatrix} 1 & 1 & 1 & 1 & 1 \\ -1 & 1 & 1 & 1 & 1 \end{pmatrix}$	$\begin{pmatrix} \gamma/2 & 0 \\ 0 & -\gamma/2 \end{pmatrix}$
(c)	$\begin{pmatrix} 1 & 1 & 1 & 1 \\ -1 & 1 & 1 & 1 \\ -1 & -1 & 1 & 1 \\ 1 & -1 & 1 & 1 \end{pmatrix}$	$\begin{pmatrix} 3\gamma/4 & 0 & 0 & 0 \\ 0 & \gamma/4 & 0 & 0 \\ 0 & 0 & -\gamma/4 & 0 \\ 0 & 0 & 0 & \gamma/4 \end{pmatrix}$
(d)	$\begin{pmatrix} 1 & 1 & 1 & 1 & 1 \\ -1 & 1 & 1 & 1 & 1 \\ -1 & -1 & 1 & 1 & 1 \\ 1 & -1 & 1 & 1 & 1 \end{pmatrix}$	$\begin{pmatrix} 3\gamma/4 & 0 & 0 & 0 \\ 0 & \gamma/4 & 0 & 0 \\ 0 & 0 & -\gamma/4 & 0 \\ 0 & 0 & 0 & \gamma/4 \end{pmatrix}$

The second set of bounds follows using bounds on r in Theorems 5 and 6: $r = \text{gc}(G) \leq 3n - 2$ for unweighted graphs, and $r \leq 3m + 1$ for weighted graphs.

APPENDIX D: COMPILATIONS FOR NOISE MODELING

The operation matrices P and W for the graphs modeled in Fig. 7 are given in Table I. We note that there are only two

graph types: a star [in (a) and (b)] and a complete graph with a single missing edge [in (c) and (d)]. We show the gate-based compilation for each of these types of graphs, using global interactions, in Fig. 8. We intentionally do not use any gate simplifications for clarity. The compilation of these two graph types is independent of the number of edges and the number of nodes.

-
- [1] J. Preskill, Quantum computing in the NISQ era and beyond, *Quantum* **2**, 79 (2018).
- [2] N. Klco, E. F. Dumitrescu, A. J. McCaskey, T. D. Morris, R. C. Pooser, M. Sanz, E. Solano, P. Lougovski, and M. J. Savage, Quantum-classical computation of Schwinger model dynamics using quantum computers, *Phys. Rev. A* **98**, 032331 (2018).
- [3] Y. Nam, J.-S. Chen, N. C. Pisenti, K. Wright, C. Delaney, D. Maslov, K. R. Brown, S. Allen, J. M. Amini, J. Apisdorf, K. M. Beck, A. Blinov, V. Chaplin, M. Chmielewski, C. Collins, S. Debnath, K. M. Hudek, A. M. Ducore, M. Keesan, S. M. Kreikemeier *et al.*, Ground-state energy estimation of the water molecule on a trapped-ion quantum computer, *npj Quantum Inf.* **6**, 33 (2020).
- [4] F. Arute, K. Arya, R. Babbush, D. Bacon, J. C. Bardin, R. Barends, S. Boixo, M. Broughton, B. B. Buckley, D. A. Buell, B. Burkett, N. Bushnell, Y. Chen, Z. Chen, B. Chiaro, R. Collins, W. Courtney, S. Demura, A. Dunsworth, E. Farhi *et al.*, Hartree-Fock on a superconducting qubit quantum computer, *Science* **369**, 1084 (2020).
- [5] M. P. Harrigan, K. J. Sung, M. Neeley, K. J. Satzinger, F. Arute, K. Arya, J. Atalaya, J. C. Bardin, R. Barends, S. Boixo, M. Broughton, B. B. Buckley, D. A. Buell, B. Burkett, N. Bushnell, Y. Chen, Z. Chen, B. Chiaro, R. Collins, W. Courtney *et al.*, Quantum approximate optimization of non-planar graph problems on a planar superconducting processor, *Nat. Phys.* **17**, 332 (2021).
- [6] E. Farhi, J. Goldstone, and S. Gutmann, A quantum approximate optimization algorithm, [arXiv:1411.4028](https://arxiv.org/abs/1411.4028).
- [7] S. Bravyi, A. Kliensch, R. Koenig, and E. Tang, Obstacles to Variational Quantum Optimization from Symmetry Protection, *Phys. Rev. Lett.* **125**, 260505 (2020).
- [8] E. Farhi, D. Gamarnik, and S. Gutmann, The quantum approximate optimization algorithm needs to see the whole graph: A typical case, [arXiv:2004.09002](https://arxiv.org/abs/2004.09002).
- [9] G. Pagano, A. Bapat, P. Becker, K. S. Collins, A. De, P. W. Hess, H. B. Kaplan, A. Kyprianidis, W. L. Tan, C. Baldwin, L. T. Brady, A. Deshpande, F. Liu, S. Jordan, A. V. Gorshkov, and C. Monroe, Quantum approximate optimization of the long-range Ising model with a trapped-ion quantum simulator, *Proc. Nat. Acad. Sci. USA* **117**, 25396 (2020).
- [10] L. M. Vandersypen, M. Steffen, G. Breyta, C. S. Yannoni, M. H. Sherwood, and I. L. Chuang, Experimental realization of Shor's quantum factoring algorithm using nuclear magnetic resonance, *Nature (London)* **414**, 883 (2001).
- [11] H. Levine, A. Keesling, A. Omran, H. Bernien, S. Schwartz, A. S. Zibrov, M. Endres, M. Greiner, V. Vuletić, and M. D. Lukin, High-Fidelity Control and Entanglement of Rydberg-Atom Qubits, *Phys. Rev. Lett.* **121**, 123603 (2018).
- [12] T. M. Graham, M. Kwon, B. Grinkemeyer, Z. Marra, X. Jiang, M. T. Lichtman, Y. Sun, M. Ebert, and M. Saffman, Rydberg-Mediated Entanglement in a Two-Dimensional Neutral Atom Qubit Array, *Phys. Rev. Lett.* **123**, 230501 (2019).
- [13] L. Henriot, L. Beguin, A. Signoles, T. Lahaye, A. Browaeys, G.-O. Reymond, and C. Jurczak, Quantum computing with neutral atoms, *Quantum* **4**, 327 (2020).
- [14] K. Xu, J.-J. Chen, Y. Zeng, Y.-R. Zhang, C. Song, W. Liu, Q. Guo, P. Zhang, D. Xu, H. Deng, K. Huang, H. Wang, X. Zhu, D. Zheng, and H. Fan, Emulating Many-Body Localization with a Superconducting Quantum Processor, *Phys. Rev. Lett.* **120**, 050507 (2018).
- [15] T. Onodera, E. Ng, and P. L. McMahon, A quantum annealer with fully programmable all-to-all coupling via Floquet engineering, *npj Quantum Inf.* **6**, 48 (2020).
- [16] We use standard notation for limiting behavior of real-valued functions. Given functions $f, g: \mathbb{N} \rightarrow \mathbb{R}$, we say $f(n) = O(g(n))$ if there exists a positive real M and a positive integer n_0 such that $|f(x)| \leq M |g(x)|$ for all $n \geq n_0$, and we say that $g(n) = \Omega(f(n))$ if $f(n) \in O(g(n))$.
- [17] Explicitly, this is defined on an n -qubit system by the tensor product $\sigma_i^z = \mathbb{I}^{\otimes i-1} \otimes \sigma^z \otimes \mathbb{I}^{\otimes n-i}$, i.e., an embedding of the 2×2 Pauli-Z matrix in $2^n \times 2^n$ space.
- [18] A. Sørensen and K. Mølmer, Entanglement and quantum computation with ions in thermal motion, *Phys. Rev. A* **62**, 022311 (2000).
- [19] J. Zhang, G. Pagano, P. W. Hess, A. Kyprianidis, P. Becker, H. Kaplan, A. V. Gorshkov, Z.-X. Gong, and C. Monroe, Observation of a many-body dynamical phase transition with a 53-qubit quantum simulator, *Nature (London)* **551**, 601 (2017).
- [20] H. B. Kaplan, L. Guo, W. L. Tan, A. De, F. Marquardt, G. Pagano, and C. Monroe, Many-Body Dephasing in a Trapped-Ion Quantum Simulator, *Phys. Rev. Lett.* **125**, 120605 (2020).
- [21] C. Kokail, C. Maier, R. v. Bijnen, T. Brydges, M. K. Joshi, P. Jurcevic, C. A. Muschik, P. Silvi, R. Blatt, C. F. Roos, and P. Zoller, Self-verifying variational quantum simulation of lattice models, *Nature (London)* **569**, 355 (2019).
- [22] J. W. Britton, B. C. Sawyer, A. C. Keith, C.-C. J. Wang, J. K. Freericks, H. Uys, M. J. Biercuk, and J. J. Bollinger, Engineered two-dimensional Ising interactions in a trapped-ion quantum simulator with hundreds of spins, *Nature (London)* **484**, 489 (2012).
- [23] J. G. Bohnet, B. C. Sawyer, J. W. Britton, M. L. Wall, A. M. Rey, M. Foss-Feig, and J. J. Bollinger, Quantum spin dynamics and entanglement generation with hundreds of trapped ions, *Science* **352**, 1297 (2016).
- [24] K. Kim, M.-S. Chang, R. Islam, S. Korenblit, L.-M. Duan, and C. Monroe, Entanglement and Tunable Spin-Spin Couplings

- between Trapped Ions using Multiple Transverse Modes, *Phys. Rev. Lett.* **103**, 120502 (2009).
- [25] D. James, Quantum dynamics of cold trapped ions with application to quantum computation, *Appl. Phys. B* **66**, 181 (1998).
- [26] P. J. Lee, K.-A. Brickman, L. Deslauriers, P. C. Haljan, L.-M. Duan, and C. Monroe, Phase control of trapped ion quantum gates, *J. Opt. B* **7**, S371 (2005).
- [27] J. M. Pino, J. M. Dreiling, C. Figgatt, J. P. Gaebler, S. A. Moses, M. S. Allman, C. H. Baldwin, M. Foss-Feig, D. Hayes, K. Mayer, C. Ryan-Anderson, and B. Neyenhuis, Demonstration of the trapped-ion quantum CCD computer architecture, *Nature (London)* **592**, 209 (2021).
- [28] K. R. Islam, Quantum simulation of interacting spin models with trapped ions, Ph.D., University of Maryland, 2012.
- [29] D. W. Leung, I. L. Chuang, F. Yamaguchi, and Y. Yamamoto, Efficient implementation of coupled logic gates for quantum computation, *Phys. Rev. A* **61**, 042310 (2000).
- [30] M. Müller, K. Hammerer, Y. L. Zhou, C. F. Roos, and P. Zoller, Simulating open quantum systems: From many-body interactions to stabilizer pumping, *New J. Phys.* **13**, 085007 (2011).
- [31] R. L. Graham and H. Pollak, On the addressing problem for loop switching, *Bell Syst. Tech. J.* **50**, 2495 (1971).
- [32] J. Orlin, Contentment in graph theory: Covering graphs with cliques, *Indagat. Math. (Proc.)* **80**, 406 (1977).
- [33] The MIP was solved using Python 3.5 and Gurobi 9 on a computing cluster of machines with an Intel Xeon E5-2670 2.3-GHz CPU and 128 GB of main memory.
- [34] Subject to the M -constraint described in the previous section and in Appendix B.
- [35] B. McKay, Combinatorial data, <http://users.cecs.anu.edu.au/~bdm/data/>, accessed March 1, 2020.
- [36] D. Maslov, Basic circuit compilation techniques for an ion-trap quantum machine, *New J. Phys.* **19**, 023035 (2017).
- [37] <https://github.com/qiskit/qiskit>, Qiskit: An open-source framework for quantum computing (2019).
- [38] D. M. Debroy, M. Li, S. Huang, and K. R. Brown, Logical performance of 9 qubit compass codes in ion traps with crosstalk errors, *Quantum Sci. Technol.* **5**, 034002 (2020).
- [39] A. Bermudez, X. Xu, R. Nigmatullin, J. O’Gorman, V. Negnevitsky, P. Schindler, T. Monz, U. G. Poschinger, C. Hempel, J. Home, F. Schmidt-Kaler, M. Biercuk, R. Blatt, S. Benjamin, and M. Müller, Assessing the Progress of Trapped-Ion Processors Towards Fault-Tolerant Quantum Computation, *Phys. Rev. X* **7**, 041061 (2017).
- [40] M. A. Nielsen and I. L. Chuang, *Quantum Computation and Quantum Information: 10th Anniversary Edition* (Cambridge University Press, New York, 2011).
- [41] C. D. Herold, S. D. Fallek, J. T. Merrill, A. M. Meier, K. R. Brown, C. E. Volin, and J. M. Amini, Universal control of ion qubits in a scalable microfabricated planar trap, *New J. Phys.* **18**, 023048 (2016).
- [42] S. Fallek, C. Herold, B. McMahon, K. Maller, K. R. Brown, and J. Amini, Transport implementation of the Bernstein-Vazirani algorithm with ion qubits, *New J. Phys.* **18**, 083030 (2016).
- [43] A. M. Meier, K. A. Burkhardt, B. J. McMahon, and C. D. Herold, Testing the robustness of robust phase estimation, *Phys. Rev. A* **100**, 052106 (2019).
- [44] For very large ion crystals, this time can be reduced by at least an order of magnitude by increasing the gate laser intensity and reducing the mode detuning.
- [45] Y. Wang, M. Um, J. Zhang, S. An, M. Lyu, J.-N. Zhang, L.-M. Duan, D. Yum, and K. Kim, Single-qubit quantum memory exceeding ten-minute coherence time, *Nat. Photon.* **11**, 646 (2017).
- [46] P. C. Lotshaw, T. Nguyen, A. Santana, A. McCaskey, R. Herrman, J. Ostrowski, G. Siopsis, and T. S. Humble, Scaling quantum approximate optimization on near-term hardware, *Sci. Rep.* **12**, 12388 (2022).
- [47] D. J. H. Garling, in *Inequalities: A Journey into Linear Analysis* (Cambridge University Press, Cambridge, England, 2007), p. 233.